

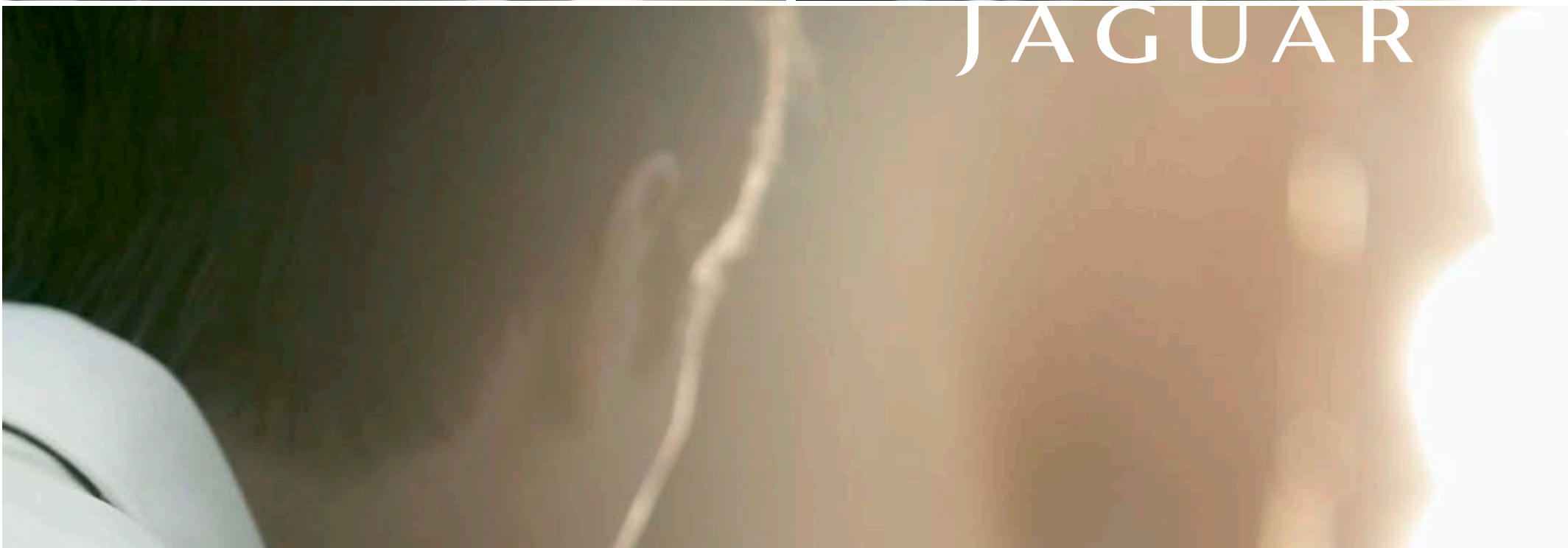
X-TYPE



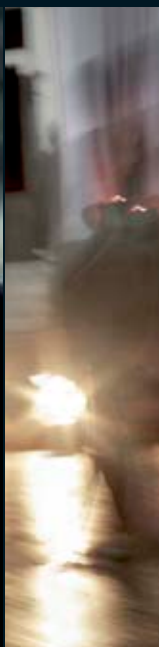
JAGUAR



X-TYPE in Liquid Silver with Barbados alloy wheels



JAGUAR



The X-TYPE 6-9. Engine choice 10-11. Driving experience 12-15.
Craftsmanship 16-19. TECHNOLOGY 20-23. SAFETY 24-25.
Choices and technical specification 26-43.
X-TYPE Accessories 44-47. Owning your X-TYPE 48-49.





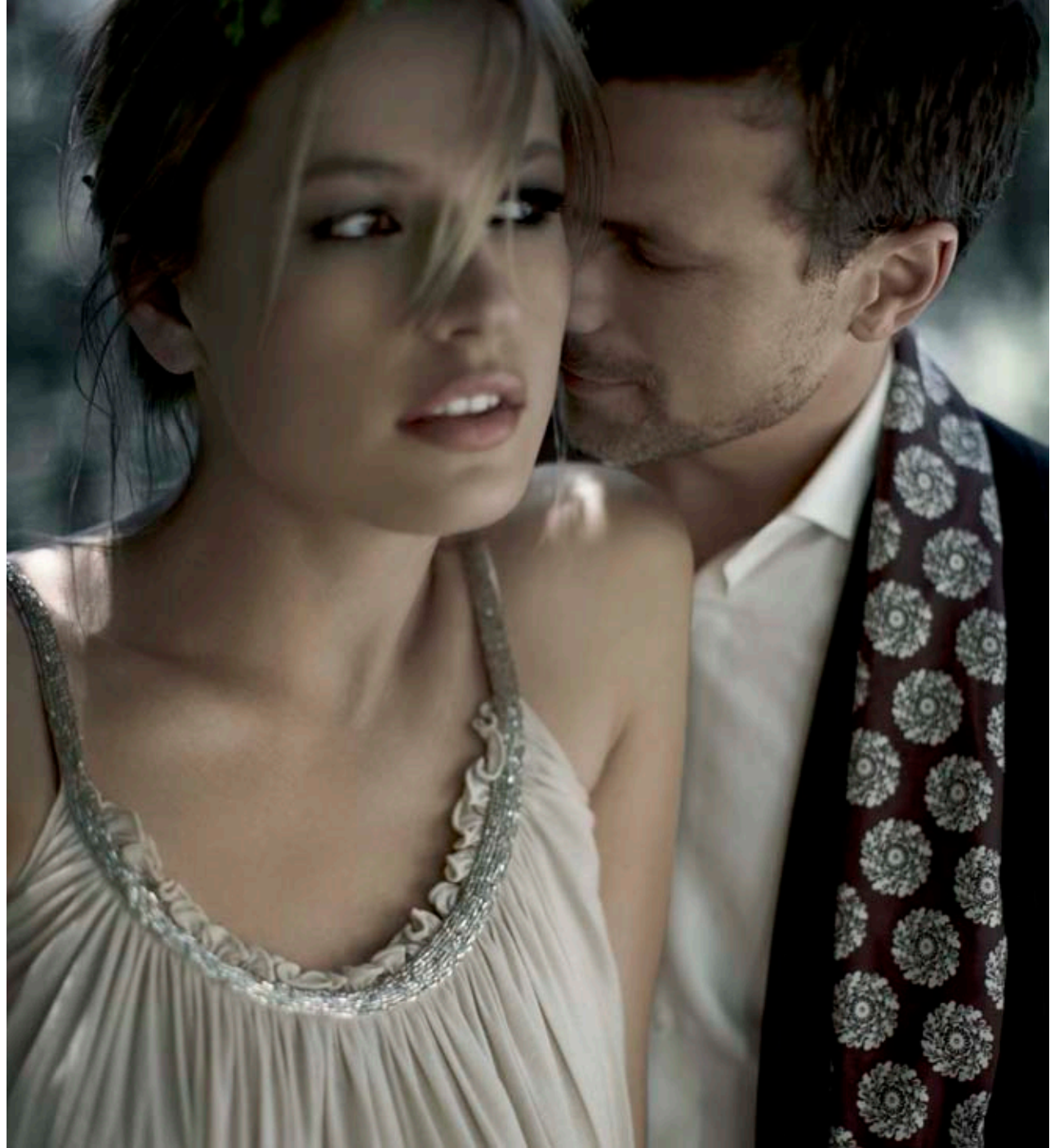
The X-TYPE from JAGUAR.
A distinctive range of premium
saloons newly redesigned to
offer *more style* and *even more choice*.

Every model focused on delivering an outstanding driving experience; quality and refinement as standard; luxury that can be enjoyed, every day. The new face is bold and contemporary, the lines and stance more sporting, the signature detailing unmistakable. X-TYPE perfectly balances performance with versatility, a dynamic character with great looks, luxury and practicality.





X-TYPE in Liquid Silver with Barbados alloy wheels





Power to suit purpose.

PETROL OR DIESEL. *A real choice.*

The new diesel engine means an even broader X-TYPE range. A refined common rail diesel, or powerful 24-VALVE V6 PETROL ENGINES; 5-speed automatic on the petrol engines and a 6-speed automatic with one-touch sequential shift transmissions - there is an X-TYPE to match your needs and to exceed anything you might expect.

The 2.2 LITRE DIESEL is one of the most refined diesel engines in the world and comes with the new 6-speed JAGUAR Sequential Shift™ automatic transmission with Diesel Particulate Filter (DPF). JAGUAR Sequential Shift™ has the dual capability of fully automatic or sequential manual gear selection - a combination that's smooth, flexible, economical and dynamic. It is specifically tuned to deliver sporting performance and relaxed cruising. The 2.2 LITRE DIESEL ENGINE also features transient overboost - a few seconds at a time of increased turbo boost up to 400Nm of torque, for maximum overtaking punch whenever added performance is needed.

X-TYPE also offers JAGUAR'S superb 2.1 LITRE 117kW V6 or 3.0 LITRE 172kW V6 PETROL ENGINES with 5-speed automatic transmission.

It's a range with a huge breadth of abilities - but every choice is designed to combine performance with refinement for maximum driving pleasure.







The X-TYPE, a JAGUAR with a *fine sense of balance.*

Luxury demands refinement, and dynamic excellence means smooth comfort as well as sharp handling. Balance is everything. Balance and personal preference. The X-TYPE can offer Touring or Sport suspension tunes, and two-wheel drive or JAGUAR Traction[®] full-time All Wheel Drive (AWD). Whichever you choose, the X-TYPE's body architecture, its powertrain installations and the

way it covers the road are all tuned to deliver the most satisfying JAGUAR driving experience. Responsive, sporting and driver-focused. And, in the diesel model, the X-TYPE's noise reduction technologies include tuned acoustic insulation and engine settings that fine tune three times every millisecond to preserve tranquility and reduce vibration.





Being ahead is the *natural way* for the X-TYPE. Once again it opens *new horizons*, and all of it is underpinned by INTELLIGENTLY APPLIED TECHNOLOGY.

The X-TYPE has always been a leader – breaking new ground for JAGUAR with multiple first-time JAGUAR technologies. And the latest generation X-TYPES continue to use technology to achieve excellence.

To make their high-torque performance and driver-focused dynamics safer, even when conditions say tread gently, two-wheel drive diesel and 2.1 LITRE PETROL models have a range of sophisticated driver aids. Traction Control, and Dynamic Stability Control (DSC) with Emergency Brake Assist (EBA) can provide better grip, more balanced handling and improved stopping power, even when the road turns slippery.

The new X-TYPE 2.2 LITRE DIESEL with DPF automatic brings the sporting touch of electronically-controlled JAGUAR Sequential Shift™ to the X-TYPE for the first time – to combine refinement with dynamic performance and fine economy.

The JAGUAR Sequential Shift™ transmission offers the choice of two fully automatic modes – Drive mode for seamless response and relaxed cruising, or Sport automatic mode with more aggressive shift points and a more sporting feel.

For maximum driver involvement, Sports manual mode allows one-touch control of six perfectly spread gears – the shift quality specifically tuned to match exceptional response with optimum performance. In Sports manual mode, sequential up- and down-shifts are controlled simply by pushing the shift lever forwards or backwards, and sophisticated electronic logic does the rest.

3.0 LITRE V6 PETROL ENGINE X-TYPES feature DSC and JAGUAR Traction® full-time All Wheel Drive (AWD) as standard. JAGUAR Traction® gives exceptional road-holding and handling, for greater driver control and reassurance. In normal conditions it distributes engine power 40% to the front wheels and 60% to the rear wheels. However, if a wheel starts to slip, such as in wet conditions or under hard acceleration, more power is directed to the front wheels until full traction is regained.



Craftsmanship is a JAGUAR given, *contemporary luxury* is an X-TYPE signature.

Luxury is standard with the X-TYPE - contemporary luxury founded on thoroughly modern craftsmanship, every stitch a JAGUAR but with a new palette to reflect its bolder new look.

New seat designs feature horizontal or diamond twin-needle stitch patterns. There is a choice of sophisticated new trim colours with subtle contrasts or distinctive piping, and the availability of the highest quality materials and detailing, including Softgrain leather and contrast stitching. The powered front seats offer 10-way adjustment, and memory function for the driver's seat with three settings that also include the exterior mirrors.

There's the elegance of the chic new Rosewood or signature Burr Walnut real wood veneers, whilst Piano Black or stylish Carbon Fibre offer sporting alternatives. And the performance feel is enhanced by attention to detail. Within the instrument cluster, for example, the redesigned dials have silver metallic overlays, and green background with white pointer illumination inspired by the JAGUAR XK sports car range.





X-TYPE with Ivory leather, Rosewood veneer and diesel auto shift





The best TECHNOLOGY improves our motoring lives. JAGUAR technology is technology with the simple touch – *literally*.

JAGUAR believes in technology with a purpose, technology that's easy to use. The X-TYPE has features to look after your comfort, entertainment, information and safety, but no complex controls or clutters of switches to distract from the road – just user-friendly logic and elegant simplicity.

Cruise control is fitted as standard along with hands-free Bluetooth® telephone connectivity, which includes the ability to pair up to five separate telephones. Both of these features, along with the audio entertainment system, can be operated using thumb wheels and buttons set into the steering wheel.

On the 3.0 LITRE Luxury model, many of the most frequently used controls can be accessed from the 7-inch full-colour Touch-screen in the centre of the instrument panel. From there you can make your journey easier, more comfortable, better connected. You can find your way, with JAGUAR'S sophisticated Navigation system with DVD mapping. You can also control the audio entertainment, or access Phonebook listings and one-touch dialling functionality for the Bluetooth® telephone connectivity system.

And with optional JaguarVoice™ – many functions can be operated simply by asking. The best technology really doesn't have to be complicated.

Bluetooth® compatibility depends on handset type – for full details go to jaguar.com.au





X-TYPE with Warm Charcoal leather, Carbon Fibre veneer and petrol automatic gearbox

X-TYPE offers an array of models and features, each focused on meeting the differing needs and *requirements* of your *lifestyle*.



A comprehensive range of equipment is fitted as standard or available as individual options or option packs depending on which model you choose.

Cruise control, automatic headlamps, heated exterior mirrors, rain sensing windscreen wipers and automatic climate control are all standard across the range.

Optional high-intensity discharge Xenon headlamps with automatic levelling can help ensure the best possible night vision, whilst front and rear parking aids warn in advance of hidden obstacles like posts or low walls. Rear parking aid is standard on all models with front parking aid also standard on 3.0 Luxury.

The optional JAGUAR Premium Sound System is acoustically tailored to the X-TYPE's interior and the system's power amplifier delivers 320W through ten direct drive speakers. A 6-disc CD changer is standard on all models.

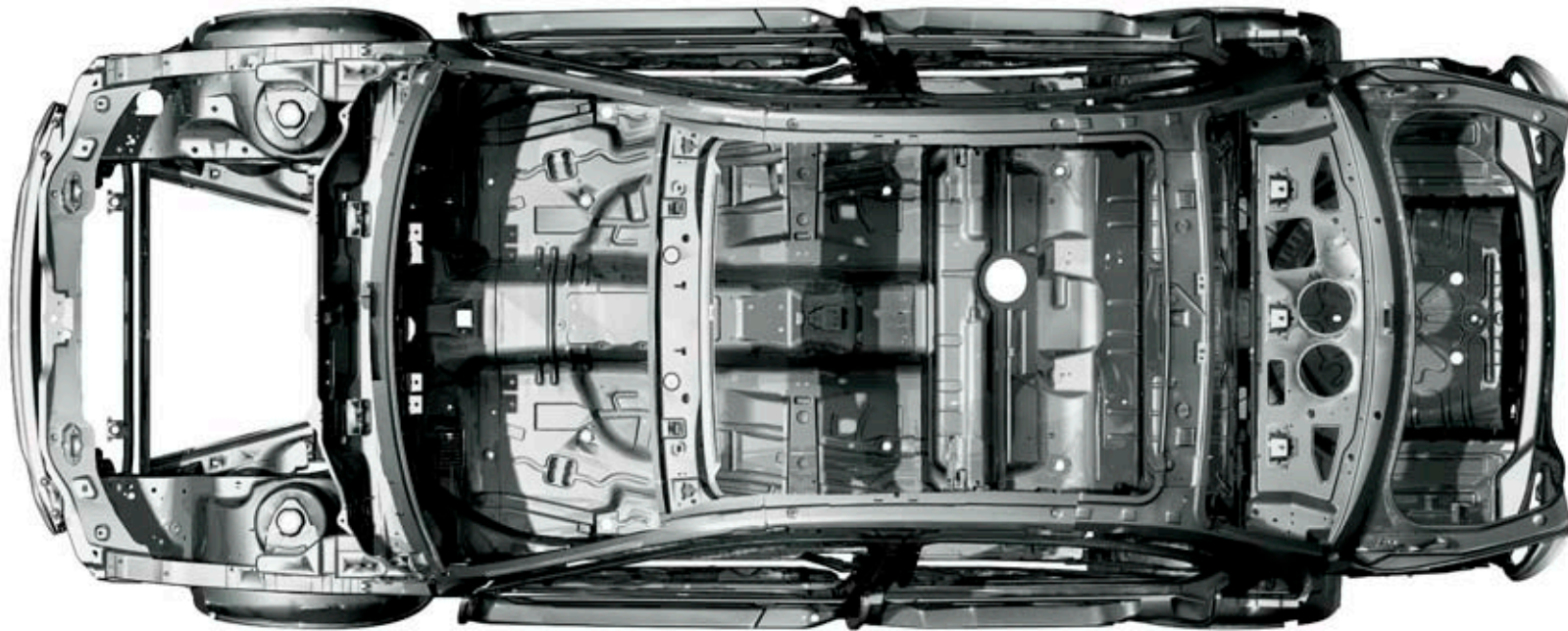




The X-TYPE has SAFETY at *its heart*, and SAFETY in depth and detail.

Safety in the X-TYPE begins with the inherent strength of its body structure. The passenger cell is protected by crumple zones that are designed to absorb energy rather than to feed it into the car, and the doors are reinforced to resist side intrusions. Inside that well-protected cell is the added protection of dual-stage front airbags, plus side bolster and curtain airbags - with the sophistication of occupant sensing systems to help ensure that if front airbags ever do need to deploy, they do it in precisely the best way to look after you. The X-TYPE's seat belts feature pyrotechnic pre-tensioners for front and rear seats, along with three rear head restraints.

But long before any of that, the X-TYPE has the foundation of features that help avoid difficult situations: superbly balanced roadholding and handling, and for when you need maximum support, a powerful four channel Anti-Lock Braking System (ABS), Dynamic Stability Control, (DSC), and Emergency Brake Assist (EBA) across the range. If EBA senses a rapid application of the brake pedal, which may indicate an emergency stop, the system is designed to automatically deliver additional brake pressure to bring the braking force into the area where ABS becomes active. This allows shorter stopping distances with improved steering control some time before the driver alone would have achieved the same effect. It is a very powerful defence system.







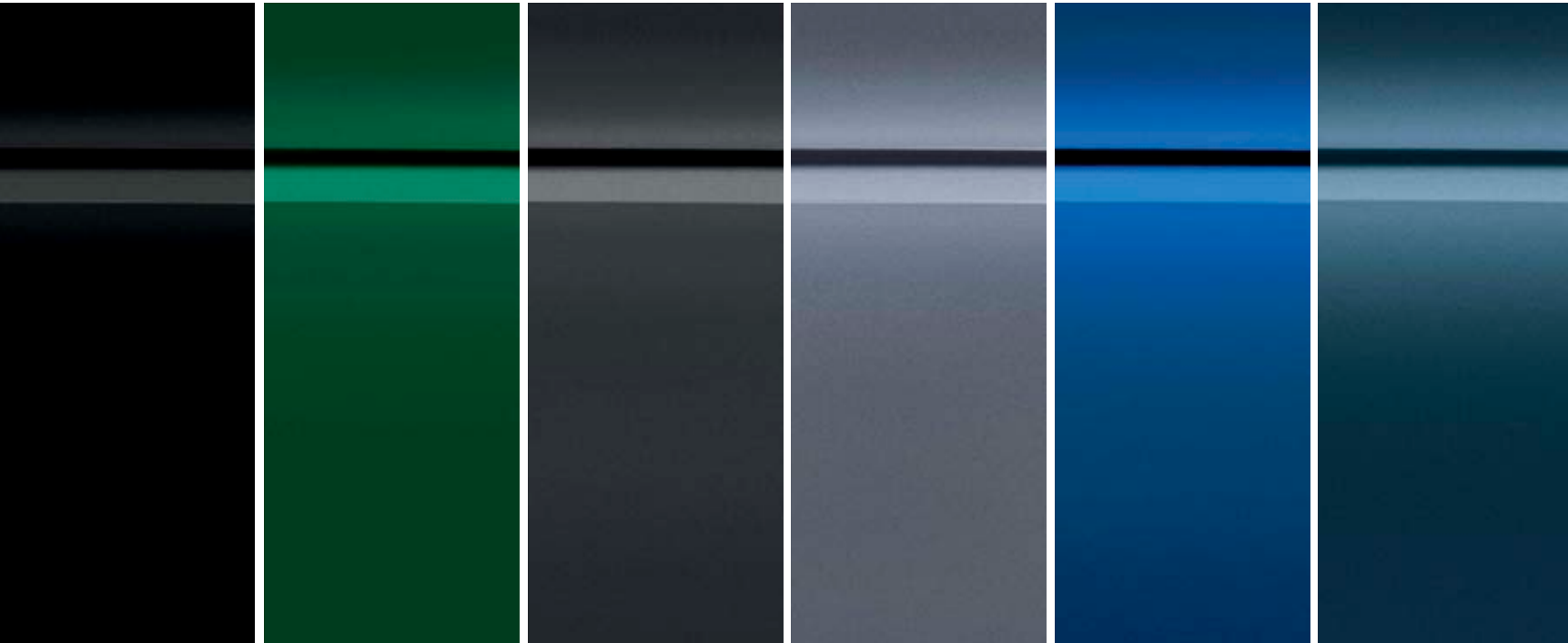
The *art* of making the X-TYPE your own – *a matter of choice.*

Your X-TYPE will be a central part of your life, and your family's life; and because your life has its own style and dynamics, you should choose the details to match.

Every X-TYPE can be an individual in almost anything you see and touch – from the wheels you ride on, to the detail of the seats you sit in and the trim that highlights the cabin around you. There is an extensive choice of exterior paint colours and alloy wheel designs. And with interior specifications that include four seat and trim colours and two seat styles, new horizontal or diamond twin-needle stitching and four very different veneer finishes, it may be some time before you reach a decision.



EXTERIOR COLOURS



Ultimate Black*

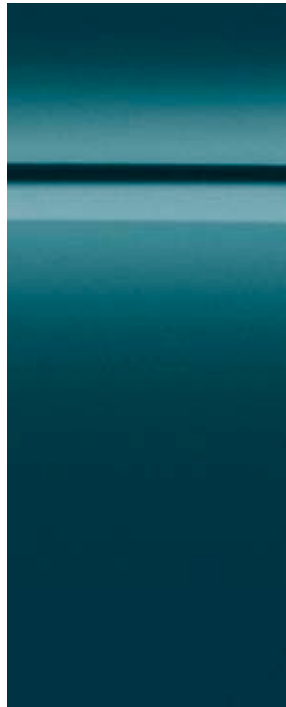
Emerald Fire*

Tektite Grey*†

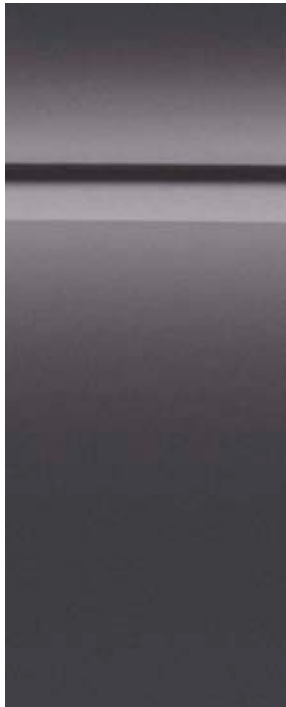
Glacier Blue*

Lazuli Blue*†

Indigo*



Blue Prism*†



Pearl Grey*†



Shadow Grey*



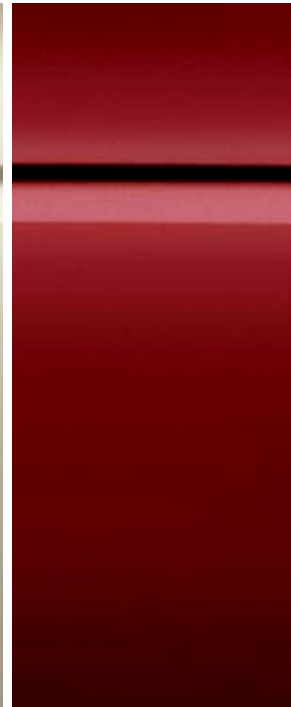
Liquid Silver*



Porcelain



Winter Gold*



Chilli*



BELIZE 17" ALLOY WHEEL



BERMUDA 17" ALLOY WHEEL



BARBADOS 17" ALLOY WHEEL



PROTEUS 18" ALLOY WHEEL

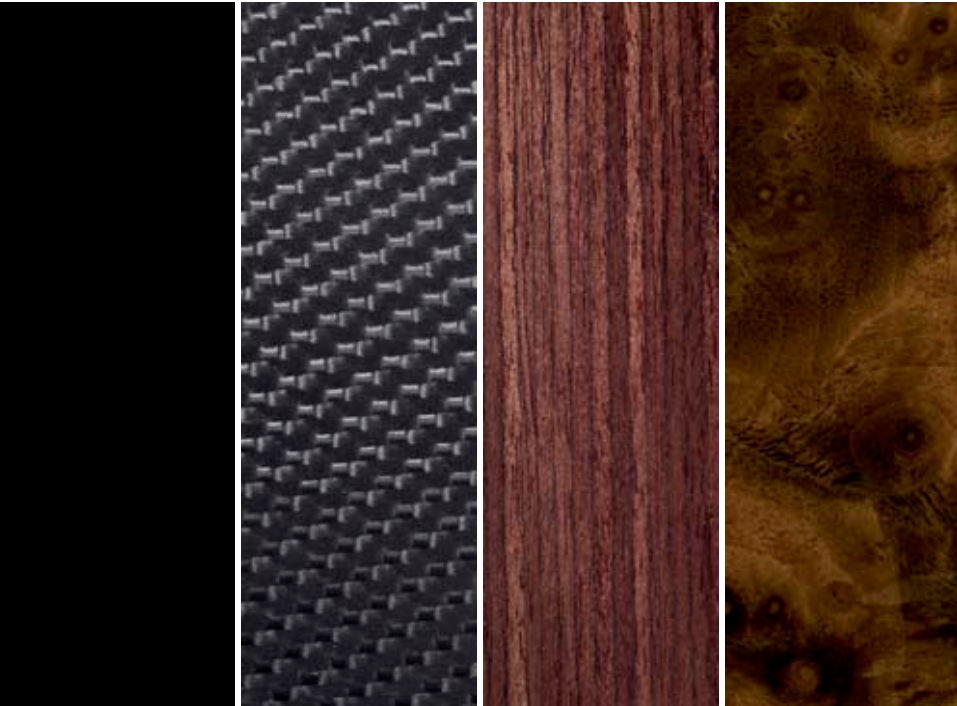


ABACO 18" ALLOY WHEEL



VALENCIA 18" ALLOY WHEEL

INTERIOR VENEERS



Piano Black

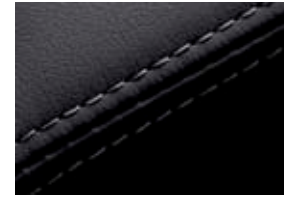
Carbon Fibre

Rosewood

Burr Walnut

CONTRAST STITCHING

CONTRAST PIPING



Warm Charcoal / Stone



Champagne / Warm Charcoal



Ivory / Warm Charcoal



Warm Charcoal / Champagne



Spice / Warm Charcoal



Ivory / Oyster

SEAT COLOURS



Warm Charcoal

Spice

Ivory

Champagne

TRIM COLOURS



Warm Charcoal

Oyster
(upper facia only)

Champagne

Ivory

DESIGNER'S CHOICE

EXTERIOR COLOUR	LEATHER TRIM	UPPER FACIA	DESIGNER'S CHOICE
ULTIMATE BLACK*	Ivory	Oyster	<input type="checkbox"/>
	Ivory	Warm Charcoal	<input checked="" type="checkbox"/>
	Champagne	Warm Charcoal	<input checked="" type="checkbox"/>
	Warm Charcoal	Warm Charcoal	<input checked="" type="checkbox"/>
	Spice**	Warm Charcoal	<input checked="" type="checkbox"/>
EMERALD FIRE*	Ivory	Oyster	<input checked="" type="checkbox"/>
	Ivory	Warm Charcoal	<input type="checkbox"/>
	Champagne	Warm Charcoal	<input type="checkbox"/>
	Warm Charcoal	Warm Charcoal	<input type="checkbox"/>
	Spice**	Warm Charcoal	<input type="checkbox"/>
TEKTITE GREY*‡	Ivory	Oyster	<input type="checkbox"/>
	Ivory	Warm Charcoal	<input type="checkbox"/>
	Champagne	Warm Charcoal	<input checked="" type="checkbox"/>
	Warm Charcoal	Warm Charcoal	<input checked="" type="checkbox"/>
	Spice**	Warm Charcoal	<input checked="" type="checkbox"/>

EXTERIOR COLOUR	LEATHER TRIM	UPPER FACIA	DESIGNER'S CHOICE
GLACIER BLUE*	Ivory	Oyster	<input checked="" type="checkbox"/>
	Ivory	Warm Charcoal	<input checked="" type="checkbox"/>
	Champagne	Warm Charcoal	<input type="checkbox"/>
	Warm Charcoal	Warm Charcoal	<input type="checkbox"/>
	Spice**	Warm Charcoal	<input type="checkbox"/>
LAZULI BLUE*‡	Ivory	Oyster	<input type="checkbox"/>
	Ivory	Warm Charcoal	<input type="checkbox"/>
	Champagne	Warm Charcoal	<input type="checkbox"/>
	Warm Charcoal	Warm Charcoal	<input checked="" type="checkbox"/>
	Spice**	Warm Charcoal	<input type="checkbox"/>
INDIGO*	Ivory	Oyster	<input checked="" type="checkbox"/>
	Ivory	Warm Charcoal	<input type="checkbox"/>
	Champagne	Warm Charcoal	<input type="checkbox"/>
	Warm Charcoal	Warm Charcoal	<input type="checkbox"/>
	Spice**	Warm Charcoal	<input type="checkbox"/>
BLUE PRISM*†	Ivory	Oyster	<input type="checkbox"/>
	Ivory	Warm Charcoal	<input type="checkbox"/>
	Champagne	Warm Charcoal	<input type="checkbox"/>
	Warm Charcoal	Warm Charcoal	<input checked="" type="checkbox"/>
	Spice**	Warm Charcoal	<input type="checkbox"/>

EXTERIOR COLOUR LEATHER TRIM UPPER FACIA DESIGNER'S CHOICE

PEARL GREY*†	Ivory	Oyster	■
	Ivory	Warm Charcoal	□
	Champagne	Warm Charcoal	□
	Warm Charcoal	Warm Charcoal	■
	Spice**	Warm Charcoal	■
SHADOW GREY*	Ivory	Oyster	□
	Ivory	Warm Charcoal	□
	Champagne	Warm Charcoal	□
	Warm Charcoal	Warm Charcoal	■
	Spice**	Warm Charcoal	■
LIQUID SILVER*	Ivory	Oyster	□
	Ivory	Warm Charcoal	■
	Champagne	Warm Charcoal	□
	Warm Charcoal	Warm Charcoal	■
	Spice**	Warm Charcoal	■

EXTERIOR COLOUR LEATHER TRIM UPPER FACIA DESIGNER'S CHOICE

PORCELAIN	Ivory	Oyster	■
	Ivory	Warm Charcoal	□
	Champagne	Warm Charcoal	□
	Warm Charcoal	Warm Charcoal	□
	Spice**	Warm Charcoal	□
WINTER GOLD*	Ivory	Oyster	■
	Ivory	Warm Charcoal	□
	Champagne	Warm Charcoal	□
	Warm Charcoal	Warm Charcoal	□
	Spice**	Warm Charcoal	□
CHILLI*	Ivory	Oyster	□
	Ivory	Warm Charcoal	■
	Champagne	Warm Charcoal	□
	Warm Charcoal	Warm Charcoal	■
	Spice**	Warm Charcoal	□

■ Designers Choice □ Available
 All exterior paint colours are available with all interior colour combinations.
 *Metallic Paint † Available until mid 2008 ‡ Available from mid 2008
 **Only available on Sport derivatives.

INTERIOR THEMES

LE & LUXURY



LEATHER TWIN NEEDLE HORIZONTAL STITCH SEAT

Ivory

Ivory

Champagne*

Warm Charcoal

UPPER FACIA

Oyster

Warm Charcoal

Warm Charcoal*

Warm Charcoal

LOWER FACIA

Ivory

Ivory

Champagne*

Warm Charcoal

STANDARD VENEER (options)

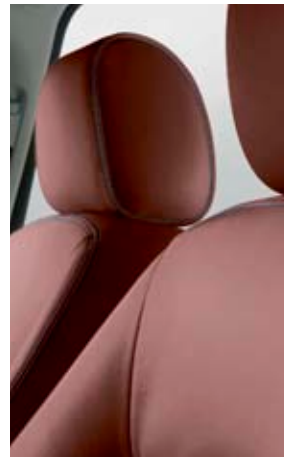
Rosewood
(Piano Black)

Rosewood
(Piano Black)

Rosewood*
(Piano Black)

Rosewood
(Piano Black)

SPORT



SOFTGRAIN LEATHER TWIN NEEDLE DIAMOND STITCH SEAT (with contrast stitching)

Ivory (Warm Charcoal)

Warm Charcoal (Stone)

Spice (Warm Charcoal)*

UPPER FACIA

Warm Charcoal

Warm Charcoal

Warm Charcoal*

LOWER FACIA

Warm Charcoal

Warm Charcoal

Warm Charcoal*

STANDARD VENEER (options)

Carbon Fibre
(Rosewood)

Carbon Fibre
(Rosewood)

Carbon Fibre*
(Rosewood)

HIGH LUXURY PACK



**LEATHER TWIN NEEDLE
HORIZONTAL STITCH SEAT
(with contrast piping)**

Ivory (Oyster)**

Champagne (Warm Charcoal)

Warm Charcoal (Champagne)

UPPER FACIA

Oyster**

Warm Charcoal

Warm Charcoal

LOWER FACIA

Ivory**

Champagne

Warm Charcoal

**STANDARD
VENEER**

Burr Walnut**

Burr Walnut

Burr Walnut

**Combination as shown with petrol auto shift

STANDARD FEATURES

MODEL AND ENGINES	LE 2.1/2.2D/3.0	Sport 2.1/2.2D/3.0 in addition to LE	Luxury 3.0 in addition to LE
TRANSMISSION, SUSPENSION AND BRAKES	<ul style="list-style-type: none"> ◦ 5-speed automatic transmission with J Gate (2.1/3.0) ◦ 6-speed automatic transmission with Jaguar Sequential Shift™ (2.2D only) ◦ Traction control ◦ Jaguar Traction® full time All-Wheel Drive (AWD) (3.0) (in lieu of Traction control) ◦ Touring suspension ◦ Dynamic Stability Control (DSC) with Emergency Brake Assist (EBA) ◦ Diesel Particulate Filter (DPF) (2.2D only) 	<ul style="list-style-type: none"> ◦ Sports suspension 	
EXTERIOR	<ul style="list-style-type: none"> ◦ Chrome side window surrounds ◦ Power-folding exterior mirrors ◦ Rear parking aid ◦ Body colour grille surround with chrome inner surround ◦ Bright mesh grille with centre mounted Jaguar growler ◦ Bright front splitter vane ◦ Body colour door mirrors with integrated side repeaters ◦ Chrome rear signature blade ◦ Automatic headlamps with manual levelling ◦ Front fog lamps ◦ Rain sensing windscreen wipers ◦ Heated exterior mirrors with electric adjustment ◦ Heated rear window with timer ◦ Infotainment roof pod 	<ul style="list-style-type: none"> ◦ Satin black side window surrounds ◦ Rear spoiler 	<ul style="list-style-type: none"> ◦ Front and rear parking aid
WHEELS	<ul style="list-style-type: none"> ◦ Barbados 7J x 17" alloy wheels ◦ Full size spare wheel 	<ul style="list-style-type: none"> ◦ Abaco 7.5J x 18" alloy wheels ◦ Space saver spare wheel 	<ul style="list-style-type: none"> ◦ Abaco 7.5J x 18" alloy wheels ◦ Space saver spare wheel
INTERIOR	<ul style="list-style-type: none"> ◦ Twin needle horizontal stitch seats with leather seat facings (10 way driver/10 way passenger adjustment) ◦ Memory function with 3 settings for drivers' seat and exterior mirrors ◦ Rosewood veneer ◦ Folding 70/30 split rear seats ◦ Leather 4-spoke steering wheel with remote controls for audio, cruise control, Bluetooth® telephone connectivity and optional JaguarVoice™ ◦ Leather gear knob⁽¹⁾ ◦ Cruise control ◦ Automatic climate control with pollen filter ◦ Front and rear electric windows with one-touch open/close and anti-trap ◦ Door inserts to match seat trim colour with diagonal twin needle stitch pattern ◦ Front and rear carpet mat set ◦ Front ashtray with cigar lighter 	<ul style="list-style-type: none"> ◦ Twin needle diamond stitch seats with Softgrain leather seat facings and contrast stitching (10 way driver/10 way passenger adjustment) ◦ Door inserts to match seat trim colour with diamond twin needle stitch patterns ◦ Piano Black veneer 	

MODEL AND ENGINES	LE 2.1/2.2D/3.0	Sport 2.1/2.2D/3.0 in addition to LE	Luxury 3.0 in addition to LE
INTERIOR continued	<ul style="list-style-type: none"> ◦ Front sill tread plates ◦ Front centre console storage compartment with sliding armrest ◦ Steering column with manual adjustment for height and reach ◦ Interior rear view mirror with auto-dimming ◦ Sun visors with illuminated vanity mirrors for driver and front passenger ◦ Twin front cup holders ◦ Three rear head restraints ◦ Rear centre armrest with twin cup holders ◦ Trip computer with message centre 		
AUDIO AND COMMUNICATIONS	<ul style="list-style-type: none"> ◦ Jaguar Sound System ◦ Single slot CD player ◦ Bluetooth® telephone connectivity ◦ 6-disc luggage compartment CD changer 		◦ Navigation system with DVD mapping and 7 inch Touch-screen

Please refer to the glossary below for a more detailed description of features.

SAFETY AS STANDARD

Airbags, front and side (driver and front passenger)
Side curtain airbags (front and rear)
Occupancy sensing
Anti-lock Braking System (ABS)
Front and rear seat belts pre-tensioners
Front and rear crumple zones

SECURITY AS STANDARD

2-stage unlock
Remote control central locking with drive away locking intrusion and perimeter alarm with engine immobiliser

GLOSSARY

Jaguar Traction® full time All-Wheel Drive (AWD) – Standard on 3.0 V6 litre petrol models. Normally distributes power in a 40/60 front/rear split, redirecting power to achieve optimum traction the moment it senses a difference in grip between the front and rear wheels.

DSC (Dynamic Stability Control) with EBA – intervenes in demanding driving situations by applying braking to individual wheels and reducing engine torque. If it detects that the car is not

turning in accordance with the steering input, it reduces engine power and gently applies the brakes so that stability and full control are restored. The EBA system measures the rate at which the brake pedal is activated. If the system detects an emergency braking situation, EBA automatically initiates the full braking effect. This can reduce stopping distances in critical situations.

Twin needle Horizontal stitch seat with leather seat facings (10/10 way) – Driver and passenger's electric adjustment including fore/aft, recline, height, cushion tilt and lumbar support. Also includes 3 position memory function for driver's seat and exterior mirrors.

Twin needle Diamond stitch seat with Softgrain leather seat facings and contrast stitching (10/10 way) – Driver and passenger's electric adjustment including fore/aft, recline, height, cushion tilt and lumbar support. Also includes 3 position memory function for driver's seat and exterior mirrors.

High Luxury Pack – Twin needle horizontal stitch seat with leather seat facings with contrast piping (10/10 way), Burr Walnut veneer, Burr Walnut/leather 4-spoke steering wheel, rear sill tread plates and chrome door mirror caps.

Navigation system – with DVD mapping, postcode entry, destination on the move entry and voice guidance, including 7" Touch-screen controls for audio and automatic climate control, Bluetooth® telephone connectivity and (where fitted) JaguarVoice™

Jaguar Sound System – with radio featuring EON, RDS, PTY, TA and single slot CD Player with automatic volume control and 6 speakers

Jaguar Premium Sound System – With radio featuring EON, RDS, PTY, TA and single slot CD player with automatic volume control. This delivers 320W of total sound output, channelled through 10 unique Dual Direct Drive speakers that through DSP (Digital Signal Processing) are acoustically tailored to the X-TYPE's interior

Bluetooth® telephone connectivity⁽²⁾ – A Bluetooth® equipped Jaguar, enables hands-free use of your mobile phone at any time when the phone is in the car and up to 5 separate mobiles to be paired to the car. Bluetooth® is compatible with a selected range of mobile phones from a number of different manufacturers.

JaguarVoice™ – Voice control of audio, automatic climate control, Bluetooth® telephone connectivity and Navigation system.

Jaguar Sequential Shift™ – 6-speed automatic transmission (2.2D) with fully automatic Drive and Sport modes and one-touch Sport manual mode.

Diesel Particulate Filter (DPF) – Catalysed Diesel Particulate Filter is a filter system that catches the very fine diesel soot particles that arise in combustion engines. The filter system reduces soot particle emissions to near zero, not only exceeding European emissions standards (EURO STAGE IV) but also helping to reduce the level of pollutants in the environment.

⁽¹⁾Leather gearknob with Piano Black inserts for all 2.2D models
Piano Black gearknob for all 3.0 V6 with Carbon Fibre Veneer
Wooden gearknob for all 3.0 V6 with Rosewood or Burr Walnut Veneers

⁽²⁾The Bluetooth® word mark and logos are owned by the Bluetooth SIG, Inc. and any use of such marks by Jaguar Cars Limited is under license.

OPTIONAL FEATURES

MODEL AND ENGINES	LE 2.1/2.2D/3.0	Sport 2.1/2.2D/3.0	Luxury 3.0
TRANSMISSION, SUSPENSION AND BRAKES			
EXTERIOR	<ul style="list-style-type: none"> ◦ Metallic paint ◦ Xenon headlamps with automatic levelling ◦ Electric glass sunroof with sunblind and tilt/slide one touch operation 	<ul style="list-style-type: none"> ◦ Metallic paint ◦ Xenon headlamps with automatic levelling ◦ Electric glass sunroof with sunblind and tilt/slide one touch operation 	<ul style="list-style-type: none"> ◦ Metallic paint ◦ Xenon headlamps with automatic levelling ◦ Electric glass sunroof with sunblind and tilt/slide one touch operation
WHEELS	<ul style="list-style-type: none"> ◦ Belize 7J x 17" alloy wheels ◦ Bermuda 7J x 17" alloy wheels ◦ Proteus 7.5J x 18" alloy wheels ◦ Valencia R 7.5J x 18" alloy wheels ◦ Abaco 7.5J x 18" alloy wheels 	<ul style="list-style-type: none"> ◦ Proteus 7.5J x 18" alloy wheels ◦ Valencia 7.5J x 18" alloy wheels 	<ul style="list-style-type: none"> ◦ Proteus 7.5J x 18" alloy wheels ◦ Valencia R 7.5J x 18" alloy wheels
INTERIOR	<ul style="list-style-type: none"> ◦ Ivory trim ◦ Piano Black veneer ◦ Front storage tray with auxiliary power socket* ◦ 2-stage heated front seats 	<ul style="list-style-type: none"> ◦ Ivory trim with contrast stitching ◦ Rosewood veneer ◦ Carbon Fibre veneer ◦ Front storage tray with auxiliary power socket* 	<ul style="list-style-type: none"> ◦ Ivory trim ◦ Piano Black veneer ◦ Front storage tray with auxiliary power socket*
AUDIO AND COMMUNICATIONS	<ul style="list-style-type: none"> ◦ Navigation system with DVD mapping and 7 inch Touch-screen ◦ JaguarVoice™ ◦ Jaguar Premium Sound System 	<ul style="list-style-type: none"> ◦ Navigation system with DVD mapping and 7 inch Touch-screen ◦ JaguarVoice™ ◦ Jaguar Premium Sound System 	<ul style="list-style-type: none"> ◦ JaguarVoice™ ◦ Jaguar Premium Sound System
PACKS	<ul style="list-style-type: none"> ◦ High Luxury Pack 		<ul style="list-style-type: none"> ◦ High Luxury Pack

Please refer to the glossary on the previous page for a more detailed description of features.

*Optional at no extra cost



TECHNICAL SPECIFICATIONS

ENGINE	2.1 Litre V6	2.2 Litre Diesel	3.0 Litre V6
Cylinders/valves per cylinder	6/4	4/4	6/4
Bore/Stroke – mm	81.6/66.8	86.0/94.6	89.0/79.5
Capacity – cc	2,099	2,198	2,967
Maximum power – kW	117	107	172
@ rev/min	6,800	3,500	6,800
Maximum torque – Nm	200	366	284
@ rev/min	4,100	1,800	3,000
Compression ratio:1	10.75	17.5	10.5
Transmission	5-speed auto	6-speed auto	5-speed auto
PERFORMANCE (manufacturer's estimates)			
Acceleration 0-100 km/h – sec	10.8	9.9	7.5
Top speed – km/h	205	208	230
FUEL CONSUMPTION ⁽¹⁾			
Urban – l/100km	14.3	9.5	15.1
Extra urban – l/100km	7.4	5.4	7.8
Combined – l/100km	10.0	6.9	10.5
Carbon dioxide emissions – g/km	239	184	249
Tank capacity – Ltr approx. (incl. 5 Ltr reserve)	61.5	61.5	61.5
WEIGHT ⁽²⁾			
Kerb weight – kg	1,485	1,532	1,595
Gross vehicle weight – kg	1,975	2,065	2,075

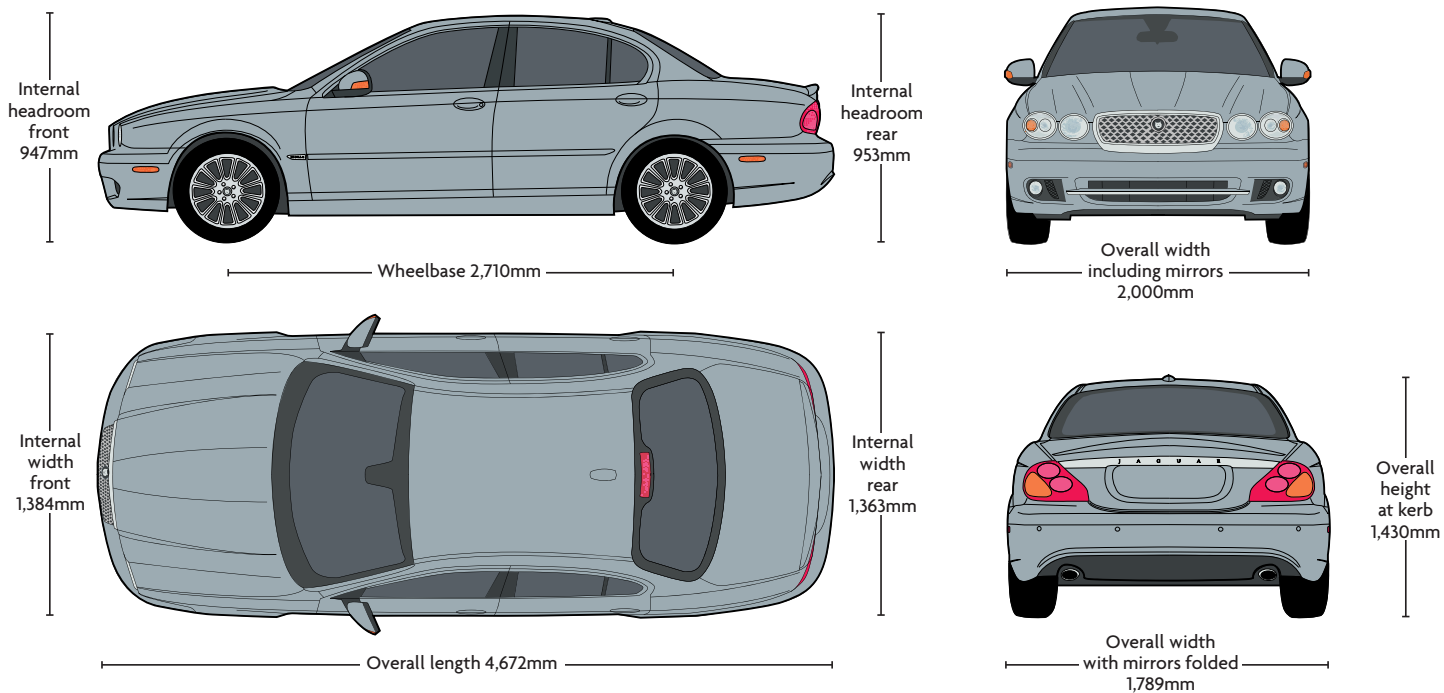
Permitted roof load – 75kg Permitted trailer load, unbraked⁽³⁾ – 750kg Permitted trailer load, braked⁽³⁾ – 1,500kg Permitted towbar download – 75kg Turning circle – kerb to kerb 10.84m Boot volume – 452 litres – VDA

⁽¹⁾ The fuel consumption figures were obtained in tests carried out in line with the Australian ADR 81/01 test procedures. These figures were correct at the time of going to press.

⁽²⁾ Weights reflect vehicles to standard specifications. Optional extras increase weight.

⁽³⁾ Up to maximum 12% gradient.

DIMENSIONS





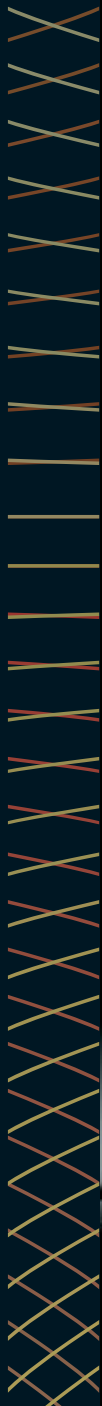
Because you will always
want the *finishing touch*...

Detail is everything, and JAGUAR Accessories are the perfect way to complete the picture. The comprehensive range offers the opportunity to personalise your X-TYPE's appearance and to add even greater functionality and convenience.

X-TYPE's Audio Connectivity Module, for example, enables personal music devices such as iPod® or MP3 players to be played through the car's existing sound system, allowing you to take your whole music library with you on the road. The Rear Screen Connectivity System allows rear seat passengers to connect DVD players, games consoles or camcorders and play them through two independently operating 5.6 inch LCD screens integrated into the front head restraints. The system also includes two sets of dual band, infrared wireless headphones. It can help keep younger passengers happy on even the longest journey - so you might never again hear the old cry, 'are we there yet?'



iPod is a trademark of Apple Inc., registered in the U.S. and other countries.





...and because you like to be **INDIVIDUAL**...



you can also add individuality to your X-TYPE's exterior, with accessories such as the sporting boot-lid spoiler, chrome mirror covers or Proteus 18-inch alloy wheels. And, there are accessories to support an active lifestyle such as the easy to load cycle/mountain bike carrier.



The X-TYPE ownership experience. SERVICE, ASSURANCE, and PEACE OF MIND are all part of the pride of *owning your* X-TYPE.

THE JAGUAR ACCESSORY RANGE

Enabling you to personalise your car, to create a driving experience that is even more individually rewarding. All JAGUAR accessories are tested rigorously for safety and durability in the most arduous of climates and conditions. A comprehensive range of styling options, interior and exterior accessories, enabling you to tailor your X-TYPE to suit your personal style.

BECAUSE ONLY THE BEST WILL DO

An official JAGUAR dealer or Approved Service Centre can ensure that JAGUAR trained, specialist technicians, with access to the full range of JAGUAR approved parts and tools, will always be on hand to guarantee that every fitting, or repair, is carried out exactly the way JAGUAR intended. Your JAGUAR dealer or Approved Service Centre can also supply and fit JAGUAR approved accessories to personalise and add to the practicality and style of your New X-TYPE model.

TOTAL CARE

Providing a seamless support system for you and your X-TYPE with regular servicing, 3 year/100,000 kilometre* warranty together with a 3 year Paint Surface Warranty and 6 year Corrosion (Perforation) Warranty and JAGUAR Roadside Assistance Programme.

JAGUAR ROADSIDE ASSISTANCE

All JAGUAR vehicles purchased in Australia benefit from complimentary JAGUAR Roadside Assistance service for the length of the new car warranty. This covers you Australia-wide 24 hours per day, every day.

WARRANTY

3 year /100,000 kilometre warranty* together with a 3 year unlimited kilometre Paint Surface Warranty and 6 year unlimited kilometre Corrosion (Perforation) Warranty.

JAGUAR MAGAZINE

From travel to fashion, chic to champagne, JAGUAR magazine is an owner's publication like no other. JAGUAR articles touch on everything from exclusive holiday destinations to fine wines, art to architecture. As well as features and interviews bringing all the latest news from the world of X-TYPE and JAGUAR.

JAGUAR.COM.AU

The interactive jaguar.com.au website features helpful tools such as the dealer locator, model specifications - allowing you to see the car tailored to your specification and colour - and price lists; the latest information on all the JAGUAR models and a fascinating look into the passion and legacy that infuse the JAGUAR name.

JAGUAR FINANCIAL SERVICES

Whether your requirements are business or personal, JAGUAR Financial Services offers maximum choice and flexibility with a wide range of financial and insurance plans tailored to your needs.

* Whichever occurs first



JAGUAR



IMPORTANT NOTICE

Jaguar Cars Limited is constantly seeking ways to improve the specification, design and production of its vehicles and alterations take place continually. Whilst every effort is made to produce up-to-date literature, this brochure should not be regarded as an infallible guide to current specifications, nor does it constitute an offer for the sale of any particular vehicle. Distributors and dealers are not agents of Jaguar Cars Limited and have absolutely no authority to bind Jaguar Cars Limited by any express or implied undertaking or representation. Illustrations in this brochure may include optional extras and/or options/specifications not available for the Australian market. Please check availability with your Jaguar dealer or Jaguar Australia.

Comparisons are based on manufacturer's own data and testing.

ENVIRONMENTAL NOTICE

Jaguar Cars Limited has a vision of being amongst the world's leading companies in demonstrating progress towards sustainability. We aim to do this by contributing to a better quality of life, with corporate citizenship at the very heart of our company, and by reducing our environmental footprint through innovative design and manufacturing, minimizing resource and energy use. Environmental responsibility is a core value in Jaguar, and it is our policy to continually improve our environmental standards in all areas of business activity.

This brochure is produced using paper stock, which contains 50% recycled post consumer waste and controlled wood material from well managed forests. Pulps used are Elemental Chlorine Free.



Jaguar Australia, Locked Bag 2213, North Ryde NSW 1670
Phone: 1800 450 683 or 02 9020 1400 Fax: 02 9020 1794
A division of Premier Automotive Group Australia Pty Limited
A.C.N 004 352 238
Printed in England
JLM/37/02/11/09

jaguar.com.au

Victoria 46

Victoria 46






JAGUAR