



MAINBOARD

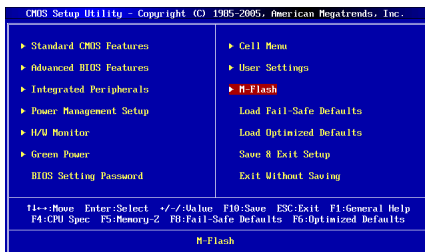
K9N6PGM2-V2

- AM3 Ready
- Support AMD Phenom™II, Phenom™, Athlon™ II, & Athlon series processor
- Support DDR2-1066/800/667 memory

Key Features

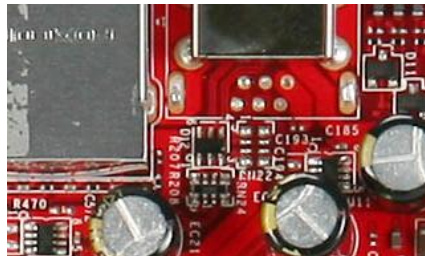
M-Flash

It can then be used to rebuild all BIOS information into original state from pen drive which is a convenient and safe repair.



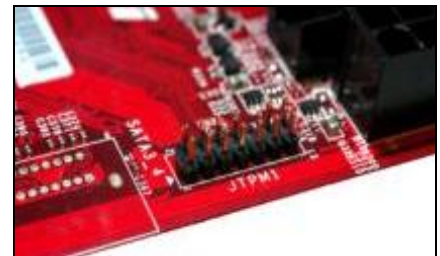
USB Safeguard

Simplifying the complicated BIOS selections, the user can set different settings by switching for different configurations



TPM Support

Just connect the extra device, your confidential data now could be stored in a very safe way through the TPM (Trusted Platform Module)



Specifications



Processor	Support for AMD Phenom™ II / Phenom™ / Athlon™ II / Athlon™ Processors
Chipset	MCP61P
Memory	2 DIMMs support for DDR2-800/667/533 MHz up to 4GB max
Video	<ul style="list-style-type: none"> ● NVIDIA GeForce 6100 GPU Integrated with D-sub port & Direct X 9.0c ● 1 x PCI Express x16 slot
Audio	8-channel (7.1) HD Audio subsystem
LAN	10/100/1000 Mbits / sec LAN subsystem
Peripheral interfaces	<ul style="list-style-type: none"> ● 2 x SATA 3.0 Gbps ports ● 1 x PATA IDE port with ATA-100/133 support ● 8 x USB 2.0 ports (4 x external, 4 x internal)
Expansion capabilities	<ul style="list-style-type: none"> ● 1 x PCI-Express x1 slot ● 2 x PCI slots
Accessories	<ul style="list-style-type: none"> ● SATA & PATA HDD Cable ● Power Convert cord