

# OEM Equipment

Electrical Apparatus  
800-47

## 600 A 35 kV Class Deadbreak Apparatus Bushing

### GENERAL

Cooper Power Systems 600 A 35 kV Class deadbreak apparatus bushing meets the full requirements of **IEEE Standard 386™** separable insulated connector systems. All 600 A separable connectors manufactured according to **IEEE Standard 386™** will operate with this bushing.

The epoxy bushings are designed for sidewall mounting in transformers, switches and other apparatus filled with transformer oil or Envirotemp FR3 Fluid or an approved equivalent. Separable connector systems, such as Cooper Power Systems Bol-T and T-OP II Deadbreak Connectors as well as other similar systems on the market, can be used with these bushings.

### INSTALLATION

No special tools are required. The bushing is mounted through the apparatus sidewall and clamped externally. Refer to Installation Instruction Sheet S800-35-1 (5000050608) for details.

### PRODUCTION TESTS

Tests are conducted in accordance with **IEEE Standard 386™**.

- ac 60 Hz 1 Minute Withstand  
— 50 kV
- Minimum Partial Discharge Level  
— 26 kV

Tests are conducted in accordance with Cooper Power Systems requirements:

- Physical Inspection
- Periodic Dissection
- Periodic Fluoroscopic Analysis (X-ray)



Figure 1.  
36 kV Class Deadbreak Apparatus Bushing.

**TABLE 1**  
Voltage Ratings and Characteristics

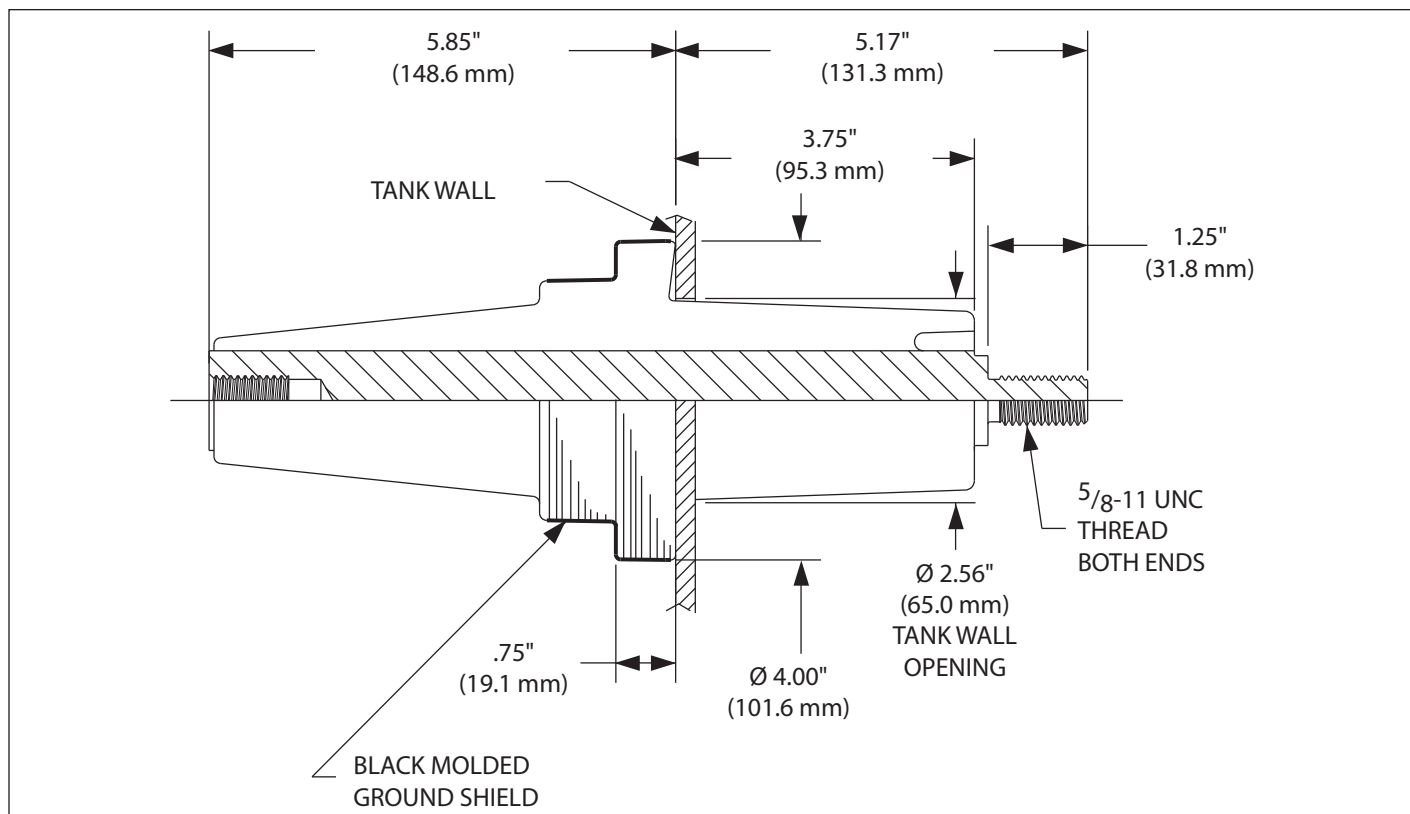
Description	kV
Standard Voltage Class	36
Maximum Rating Phase-to-Ground	21.1
AC 60 Hz 1 Minute Withstand	70
DC 15 Minute Withstand	103
BIL and Full Wave Crest	170
Minimum Corona Voltage Level	26

Voltage ratings and characteristics are in accordance with **IEEE Standard 386™**.

**TABLE 2**  
Current Ratings and Characteristics

Description	Amperes
Continuous	600 A rms (Aluminum) 900 A (Copper)
Short Time	25,000 A rms symmetrical for 0.17 s 10,000 A rms symmetrical for 3.0 s

Current ratings and characteristics are in accordance with **IEEE Standard 386™**.



**Figure 2.**  
600 A 35 kV Class Deadbreak Apparatus Bushing.

NOTE: Dimensions given are for reference only.

**ORDERING INFORMATION**

To order a 600 A 35 kV Class deadbreak bushing, specify bushing, clamp and gasket from Table 3.

**TABLE 3**  
Bushing, Clamp and Gasket

Description	Catalog Number
35 kV Bushing Aluminum Conductor Copper Conductor	2637459C01 2637459C02
Plated Steel Clamp	2637023B01
Stainless Steel Clamp	2637023B02
Gasket	0537980C06

**TABLE 4**  
Accessories

Description	Catalog Number
Shipping Cap (not for energized operation)	2637700B01
If a threaded stud is required, specify: Aluminum Copper	STUD635-A STUD635-C

NOTE: For other thread types, contact your Cooper Power Systems representative..

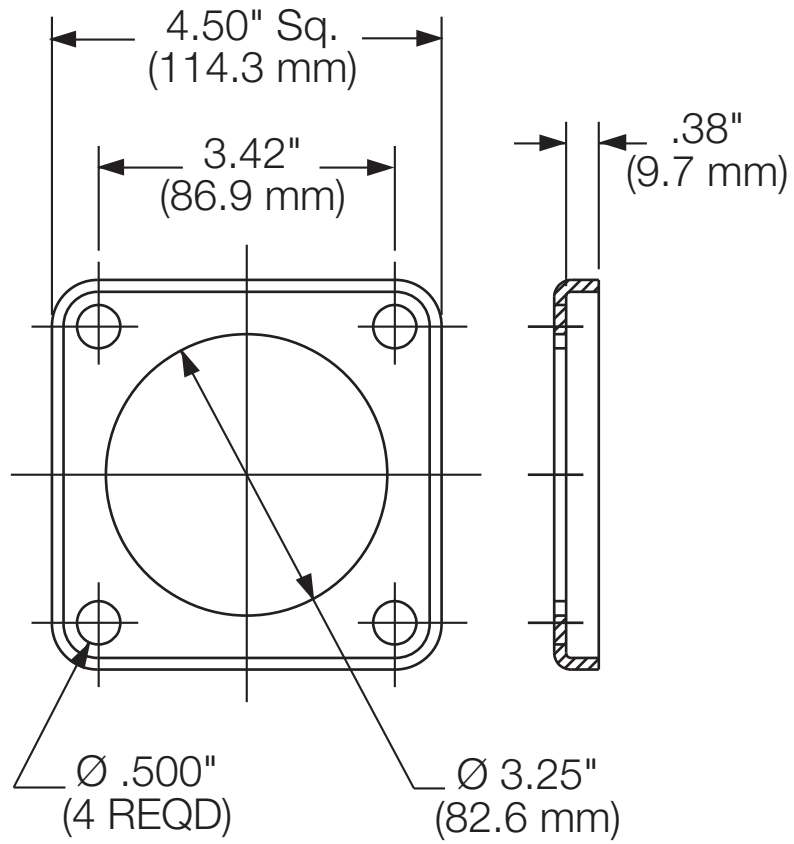


Figure 3.  
Clamp front and side view.

NOTE: Dimensions given are for reference only.

