

This page is also available in [India \(English\)](#)



PHILIPS



LCD monitor, LED backlight

220P4LPYEB/00



Unfortunately this product is no longer available

[Find similar products](#)

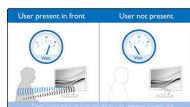
Sustainable eco design display

The Philips PowerSensor LED display using 65% post-consumer recycled plastics and PVC, BFR free housing is ideal for eco-friendly productivity [See all benefits >](#)

Sustainable eco design display

with PowerSensor saves energy bills

- P Line
- 22" (55.9 cm)
- 1680 x 1050



PowerSensor saves up to 80% energy costs

PowerSensor is a built-in 'people sensor' that transmits and receives harmless infrared signals to determine if the user is present and then automatically reduces monitor brightness when the user steps away from the desk, cutting energy costs by up to 80 percent and prolonging monitor life



SmartErgoBase enables user-friendly ergonomic adjustments

The SmartErgoBase is a monitor base that delivers ergonomic display comfort and provides cable management. The user-friendly height, swivel, tilt and rotation angle adjustments of the base allow the monitor to be positioned for maximum comfort to help ease the physical strains of a long workday. In addition, cable management reduces cable clutter and keeps the workspace neat and professional.



Low bezel-to-table height for maximum reading comfort

Thanks to its advanced SmartErgoBase, the Philips monitor can be lowered down almost to desk level for a comfortable viewing angle. Low bezel-to-table height is the perfect solution if you use bifocals, trifocals or progressive lens glasses for your computing work. Additionally, it allows users of different heights to use the monitor at their preferred angle and height settings, helping them to reduce fatigue and strain.

Technical Specifications

Picture/Display	LCD panel type	TFT-LCD
	Backlight type	W-LED system
	Panel Size	22 inch/55.9 cm
	Effective viewing area	473.76 (H) x 296.1 (V)
	Aspect ratio	16:10
	Optimum resolution	1680 x 1050 @ 60 Hz
	Response time (typical)	5 ms
	Brightness	250 cd/m ²
	Contrast ratio (typical)	1000:1
	SmartContrast	20,000,000:1
	Pixel pitch	0.282 x 0.282 mm
	Viewing angle	<ul style="list-style-type: none">• 170° (H)/160° (V)• @ C/R > 10
	Picture enhancement	SmartImage
	Display colours	16.7 M
	Scanning Frequency	30–83 kHz (H)/56–75 Hz (V)
sRGB	Yes	

Connectivity	Signal Input	<ul style="list-style-type: none">• DisplayPort• DVI-D (digital, HDCP)• VGA (Analogue)
--------------	---------------------	--

USB	USB 2.0 x 4
Sync Input	<ul style="list-style-type: none"> • Separate Sync • Sync on Green
Audio (In/Out)	<ul style="list-style-type: none"> • PC audio-in • Headphone out

Convenience

Built-in Speakers	1.5 W x 2
User convenience	<ul style="list-style-type: none"> • SmartImage • Volume • PowerSensor • Menu • Power On/Off
Control software	SmartControl Premium
OSD Languages	<ul style="list-style-type: none"> • English • French • German • Italian • Portuguese • Russian • Simplified Chinese • Spanish
Other convenience	<ul style="list-style-type: none"> • Kensington lock • VESA mount (100 x 100 mm)
Plug and Play Compatibility	<ul style="list-style-type: none"> • DDC/CI • Mac OS X

- sRGB
- Windows 10 / 8.1 / 8 / 7

Stand	Height adjustment	130 mm
	Pivot	90 degree
	Swivel	-65/65 degree
	Tilt	-5/20 degree

Power	ECO mode	12.6 W (typ.)
	On mode	13.58 W (EnergyStar 7.0 test method)
	Standby mode	0.3 W
	Off mode	Zero watts with Zero switch
	Power LED indicator	<ul style="list-style-type: none"> • Operation - White • Standby mode - White (flashing)
	Power supply	<ul style="list-style-type: none"> • 100-240 VAC, 50-60 Hz • Built-in

Dimensions	Product with stand (mm)	504 x 517 x 220 mm
	Product without stand (mm)	504 x 349 x 59 mm
	Packaging in mm (W x H x D)	565 x 395 x 263 mm

Weight

Product with stand (kg) 5.50 kg

Product without stand (kg) 3.38 kg

Product with packaging (kg) 7.50 kg

Operating conditions

Temperature range (operation) 0°C to 40°C °C

Temperature range (storage) -20°C to 60°C °C

Relative humidity 20% to 80% %

Altitude Operation: +12,000 ft (3658 m), Non-operation: +40,000 ft (12,192 m)

MTBF 30,000 hour(s)

Sustainability

Environmental and energy

- PowerSensor
- EnergyStar 7.0
- TCO Certified Edge
- RoHS

Recyclable packaging material 100 %

Post-consumer recycled plastic 65%

Specific Substances

- PVC/BFR free housing
- Mercury free
- Lead free

Compliance and standards**Regulatory Approvals**

- BSMI
- CE Mark
- FCC Class B
- GOST
- SASO
- SEMKO
- TUV Ergo
- TUV/GS
- UL/cUL
- WEEE

Cabinet**Front bezel**

Black

Rear cover

Black

Foot

Black

Finish

Texture

Get support for this product

[Go to consumer care >](#)

