



THE XF COLLECTION

JAGUAR





The Jaguar XF fuses sports car styling and performance with the refinement, features and space of a luxury saloon.

| | |
|-------------------|----|
| DESIGN | 4 |
| PERFORMANCE | 12 |
| CRAFTSMANSHIP | 22 |
| TECHNOLOGY | 26 |
| THE XF COLLECTION | 34 |
| SPECIFICATION | 56 |

DESIGN

Some cars are built. Some are engineered. A Jaguar is created. A rare blend of art and performance, science and beauty. A new Jaguar is one of the most powerful, technologically advanced and luxurious cars ever made.

You see it in the dynamic face of the new XF. A face that, with its powerful chrome mesh grille flanked by technically advanced, swept back headlamps, takes the XF in a thrilling, new design direction. You see it in its profile. Just gaze at the dramatic sweep of the roof and the curve of its side window frames highlighting the XF's stunning coupé lines.

At Jaguar, designers and engineers work side-by-side to develop the perfect balance of seductive design and exhilarating performance. As a result, in the new XF, design integrates seamlessly with advanced engineering, creating inspired solutions to complex, technical challenges. So, when our designers wanted slim, slender roof pillars to provide the driver with exceptional all-round visibility, engineers crafted the pillars from Boron, a metal 900 percent stronger than regular mild steel.

When our engineers required an even lower coefficient of drag and more rear downforce, the design team responded with sculpted metal that improved both high-speed stability and fuel economy. It's the kind of single-minded attention to design detail, the pursuit of engineering excellence, that helps the XF set a benchmark in quality and craftsmanship. With the new XF, Jaguar is redefining the world's perception of a sports saloon. This is the new Jaguar.











THE START BUTTON PULSES.
THE JAGUARDRIVE SELECTOR™
RISES. AIR VENTS ROTATE. THIS IS
THE THEATRE OF FIRING UP THE XF.







C_d
0.29

THE BENEFITS OF ADVANCED
AERODYNAMIC DESIGN
EFFICIENCY: REDUCED WIND
RESISTANCE, ENHANCED
STABILITY AT SPEED,
IMPROVED FUEL ECONOMY,
REDUCED CO₂ EMISSIONS,
WHISPER QUIET WIND NOISE.



PERFORMANCE

Think of it as power and performance redefined. Two versions of a new, highly advanced 3.0 Litre AJ V6D GEN III Diesel and two new 5.0 Litre AJ V8 GEN III Petrol engines to take XF performance to soaring new heights.

The numbers are simply extraordinary. The new XF 3.0 Litre Diesel produces 240PS coupled with a muscular 500Nm of torque. The high performance 3.0 Litre Diesel S delivers 275PS and a massive 600Nm. And while these two new world-class engines provide a major uplift in power, our engineers have delivered the seemingly impossible; significantly improved fuel efficiency with CO₂ emissions performance of just 179g/km.

Then there's the new direct-injection 5.0 Litre V8 Petrol which dramatically strengthens the XF's performance story. Especially in supercharged form where it produces a remarkable 510PS – enough to launch the new XFR from zero to 100km/h in 4.9 seconds. And with its semi-active exhaust, the new XFR produces the kind of pulse-racing growl to match its stellar performance.

The new naturally-aspirated 385PS 5.0 Litre V8 Petrol also sees a striking step-up in performance. Power output soars by over 28 percent over its predecessor, yet without affecting fuel efficiency or exhaust emissions. For refined, muscular V6 power, the XF's compact, all-aluminium 3.0 Litre Petrol with Variable Cam phasing, delivers an impressive 238PS and 293Nm of torque – more than 80 percent of which is available below 1,500rpm for eager athletic performance. All five of these remarkable engines deliver their exhilarating performance through a more refined, more responsive version of the XF's class-leading 6-speed electronic automatic transmission. And to provide true driver involvement, the 6-speed features Jaguar's lightning-quick Sequential Shift system with its steering-wheel-mounted paddle shifters. No matter which powertrain you choose, you're guaranteed a driving experience designed to be exceptional.



RECHARGED

200

220

240

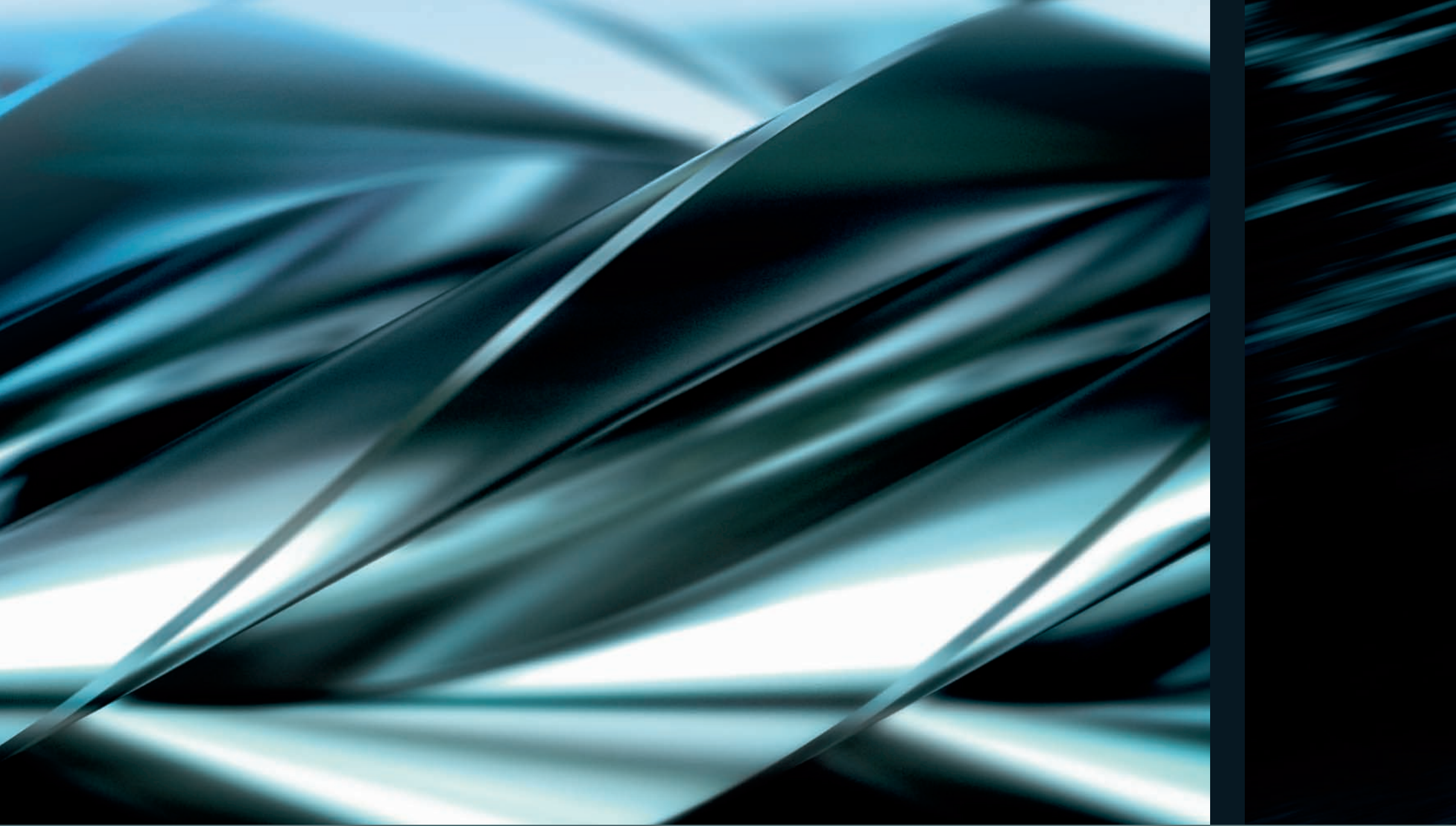
260





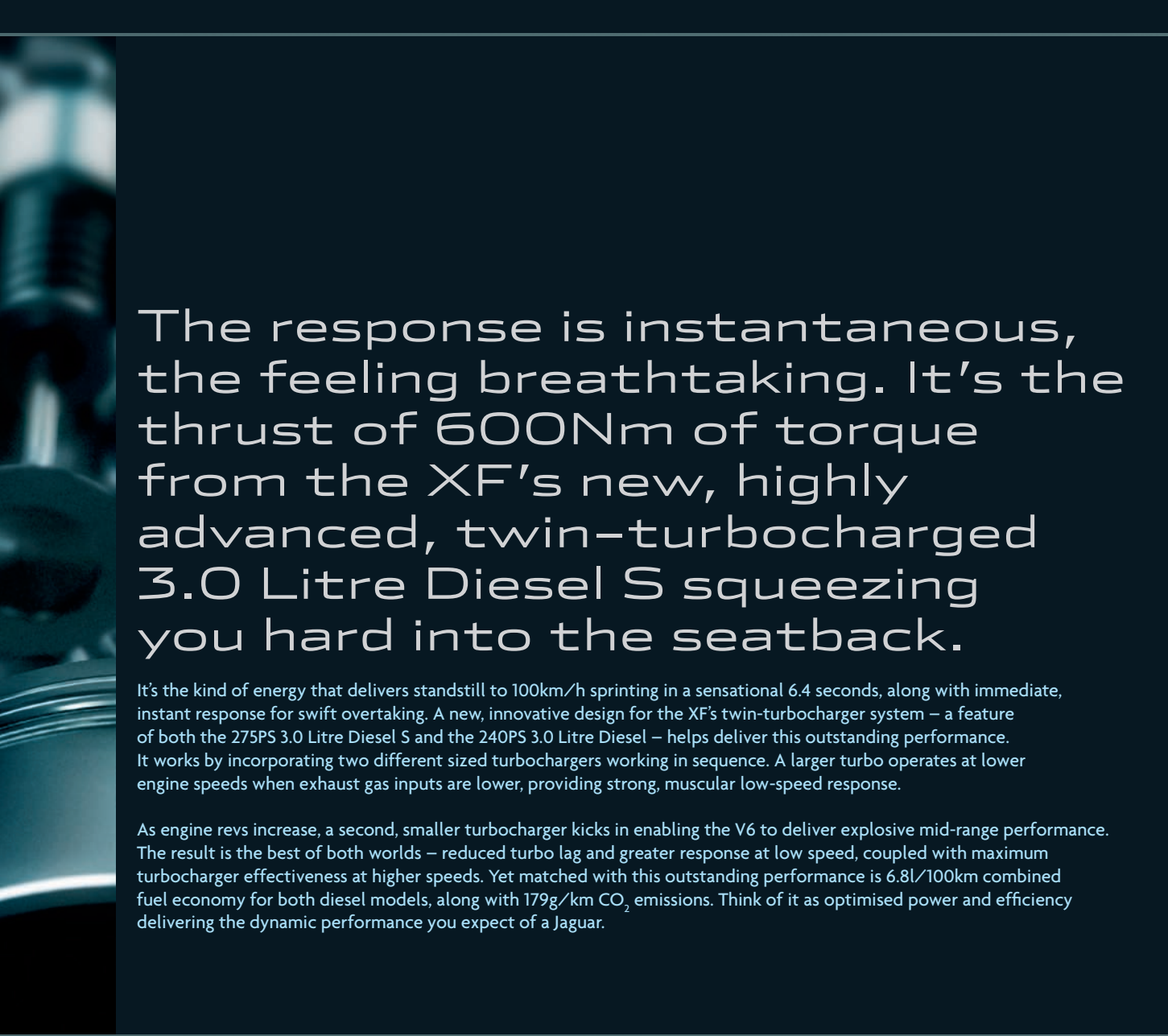
5.0/V8/SC/0-100/4.9

XFR 5.0 LITRE V8 SUPERCHARGED 0-100KM/H 4.9 SECONDS





XFR 5.0 LITRE V8 SUPERCHARGED DIRECT INJECTION 510PS 625NM TORQUE



The response is instantaneous, the feeling breathtaking. It's the thrust of 600Nm of torque from the XF's new, highly advanced, twin-turbocharged 3.0 Litre Diesel S squeezing you hard into the seatback.

It's the kind of energy that delivers standstill to 100km/h sprinting in a sensational 6.4 seconds, along with immediate, instant response for swift overtaking. A new, innovative design for the XF's twin-turbocharger system – a feature of both the 275PS 3.0 Litre Diesel S and the 240PS 3.0 Litre Diesel – helps deliver this outstanding performance. It works by incorporating two different sized turbochargers working in sequence. A larger turbo operates at lower engine speeds when exhaust gas inputs are lower, providing strong, muscular low-speed response.

As engine revs increase, a second, smaller turbocharger kicks in enabling the V6 to deliver explosive mid-range performance. The result is the best of both worlds – reduced turbo lag and greater response at low speed, coupled with maximum turbocharger effectiveness at higher speeds. Yet matched with this outstanding performance is 6.8l/100km combined fuel economy for both diesel models, along with 179g/km CO₂ emissions. Think of it as optimised power and efficiency delivering the dynamic performance you expect of a Jaguar.







3.0 LITRE DIESEL S 0-100/6.4 6.8L/100KM



CO₂ 179g/km



CRAFTSMANSHIP


The XF defines sporting luxury. It's the heady combination of exquisite craftsmanship and luxurious finishes – rich wood veneers with aluminium and supple leather – executed in a thoroughly fresh, contemporary way.

You see craftsmanship in the elegant, hand-crafted twin-needle stitching on the XF's dash top, a feature more normally reserved for the finest tailoring and bespoke trimming. You see it in the wood finishes; the soft matt Satin American Walnut, the modern, straight-grained Rich Oak, the traditional, glossy Burr Walnut. You see it in the gorgeous Figured Ebony for the Portfolio. And the stunning Dark Oak veneer that comes with the new supercharged XFR.

You'll also see Jaguar craftsmanship in features like the XF's dramatic centre console. To give the top of the console the look of being fashioned from a single piece of wood, our designers campaigned for the doors covering the three cupholders to fit pinch-tight, with virtually no visible openings. They challenged the craftsmen at Jaguar's legendary wood shop to create a 'razor-edge' look with surgically-precise, vertical cuts. You'll see the results are astonishing. And craftsmanship meets technology in features like the cylindrical JaguarDrive Selector™. It's made from cast alloy to ensure it feels solid, substantial, refined in the driver's hand.

Bringing all these elements together and creating a new pinnacle of craftsmanship and bespoke luxury, is the new XF Portfolio range. Its long list of luxury features includes the richest Softgrain leather for the seats and doors; twin-stitched, contrast-colour leather for the dash top; warm Suedecloth headlining, and premium carpet mats with contrast edging. The new XF is Sporting Luxury brought to life.





PHOSPHOR BLUE MOOD LIGHTING
FOR THE CENTRE CONSOLE,
INSTRUMENTS AND DOORS
CREATES A COOL, CONTEMPORARY
FEEL TO THE XF'S CABIN.



TECHNOLOGY

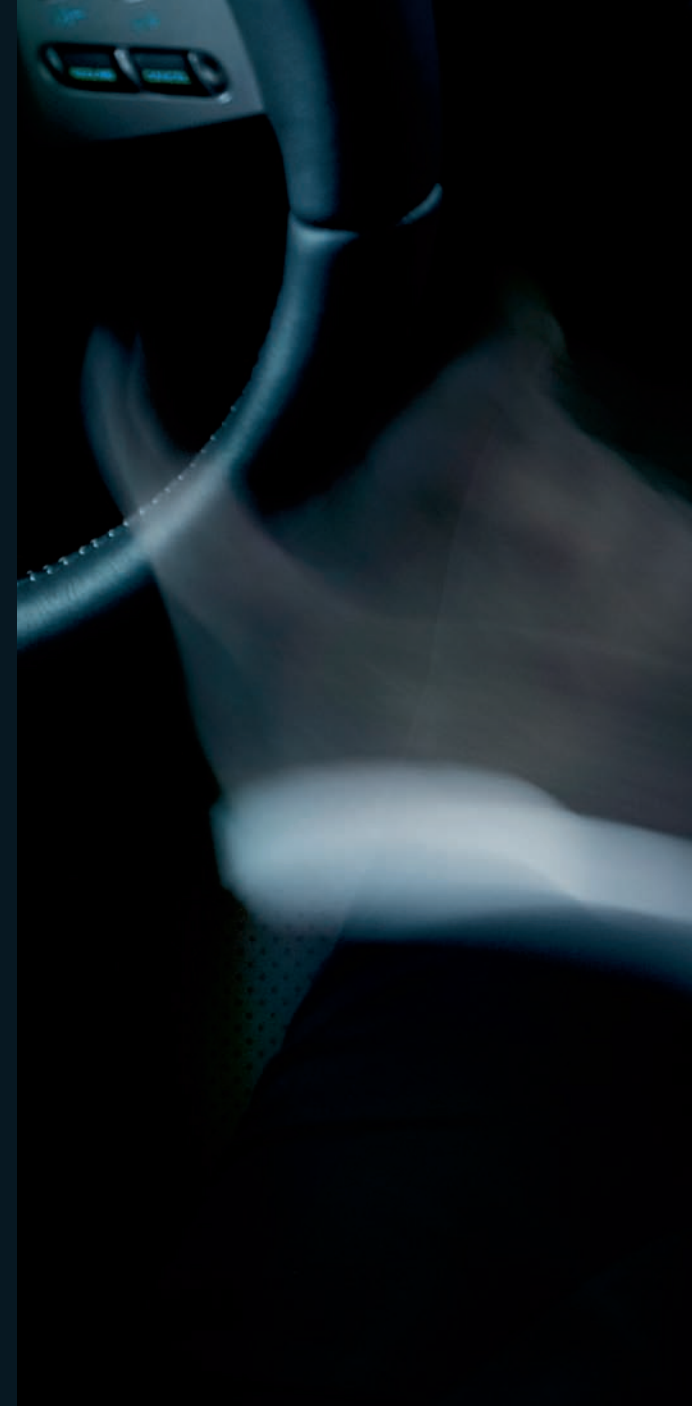
Intuitive design is about using advanced technologies to empower the driver, not to over-power. It's about creating a driving experience that excites and exhilarates.

A touch is all it takes. No buttons. No miniscule keypads. The XF's crystal-clear 7-inch full colour Touch-screen sets the standard for simple, logical, intuitive control. Its menu-based system offers simple operation of many of the car's key interior functions – climate control, entertainment, satellite navigation, Bluetooth® telephone connectivity, even the settings on your iPod. To make a selection, simply touch the screen. If that wasn't easy enough, JaguarVoice™ enables many of the key actions to be voice-activated. Just touch the press-to-talk button on the steering wheel and speak the command.

The lightest touch is all it takes to turn on an interior light. Or open the glove box. The XF's industry-first JaguarSense™ uses sophisticated proximity sensors to sense the touch of an approaching finger and reacts by switching on the light, or popping open the glove box lid. For technology that provides real peace of mind, look no further than Jaguar's remarkable new, radar-based Blind Spot Monitor. If it senses a vehicle hidden in your blind spot, it'll flash a warning. Then there are the innovative, intuitive new technologies designed to enhance and heighten the pure joy of driving the new XF. Like JaguarDrive Control™ that offers the choice of Drive or Sport modes for the XF's 6-speed electronic automatic transmission. Switch to Sport and it will hold the lower gears longer, kick down more readily, send your pulse racing.

To heighten the thrill of driving the new supercharged XFR even further, the remarkable Adaptive Dynamics system monitors body movement 100 times every second to deliver the seemingly impossible – a comfortable, luxury car ride coupled with true, hard-edged sports car handling. And for the ultimate in cornering ability, the XFR's new electronic Active Differential Control provides enhanced traction to sharpen and hone the car's agility through the curves. It's Jaguar Technology delivering a driving experience like no other.

iPod is a trademark of Apple Computer Inc. registered in the US and other countries.







ADAPTIVE DYNAMICS ACTIVE DIFFERENTIAL CONTROL



BI-XENON HEADLAMPS WITH INTEGRATED CORNERING LAMPS



JAGUARDRIVE CONTROL™ DRIVE MODE SPORT MODE DYNAMIC MODE WINTER MODE



DYNAMIC STABILITY CONTROL TracDSC



BOWERS & WILKINS 440W SURROUND SOUND SYSTEM WITH 14 LOUDSPEAKERS



DESIGNED IN ASSOCIATION WITH THE WORLD'S LEADING SPEAKER BRAND



THE XF COLLECTION

XF LUXURY

XF PREMIUM LUXURY

XF PORTFOLIO

XFR

XF ACCESSORIES





XF LUXURY

3.0 V6 PETROL

3.0 V6 DIESEL

3.0 V6 DIESEL S

CONTEMPORARY, INDIVIDUAL AND EXPERTLY CRAFTED,
THE XF SURPASSES THE COMPETITION WITH A CABIN
RICH IN LUXURIOUS FINISHES AND DESIGN BRILLIANCE





EXTERIOR CHOICE

ALLOY WHEELS



17" Libra

18" Venus

18" Cygnus

19" Artura

19" Carelia

20" Senta

Engine

3.0 V6 Petrol ●
 3.0 V6 Diesel -
 3.0 V6 Diesel S -

○
●
●

○
○
○

○
○
○

○
○
○

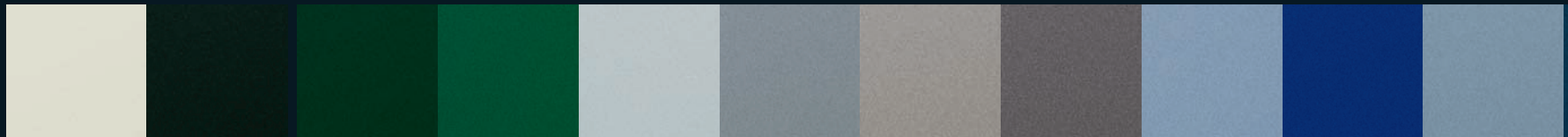
○
○
○

● Standard
 ○ Option
 - Not available

EXTERIOR COLOURS

Standard

Options



Porcelain

Ebony

Botanical Green*

Emerald Fire*

Liquid Silver*

Lunar Grey*

Vapour Grey*

Pearl Grey*

Azure Blue*

Available until mid 2009

Spectrum Blue*

Available from mid 2009

Frost Blue*

*Metallic paint

INTERIOR CHOICE

VENEERS

Standard

Option



Knurled Aluminium with Satin American Walnut

Knurled Aluminium with Burr Walnut

INTERIOR ENVIRONMENT

Standard



Warm Charcoal seats with Warm Charcoal and Dove

Dove seats with Warm Charcoal and Dove

Barley seats with Truffle and Canvas

Headlining
 Upper facia
 Seat Trim

HEADLININGS

Standard



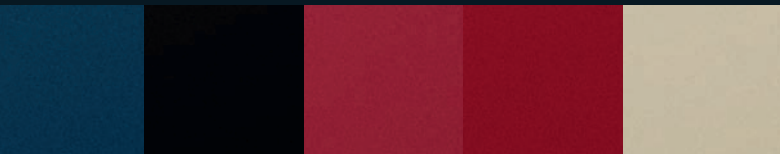
Canvas

Dove



JaguarDrive Selector™

Phosphor blue halo illumination and interior mood lighting



Indigo*

Ultimate Black*

Radiance*

Available until mid 2009

Claret*

Available from mid 2009 Please check availability with your local dealer

Winter Gold*



BOND GRAIN LEATHER SEAT FACINGS
 7-INCH FULL COLOUR TOUCH-SCREEN
 6-SPEED AUTOMATIC TRANSMISSION WITH JAGUAR SEQUENTIAL SHIFT™ AND JAGUARDRIVE SELECTOR™
 PHOSPHOR BLUE HALO ILLUMINATION AND INTERIOR MOOD LIGHTING
 JAGUARSENSE™
 JAGUAR SMART KEY SYSTEM™ WITH KEYLESS START

INTERIOR SHOWN

WARM CHARCOAL BOND GRAIN LEATHER SEAT FACINGS
 KNURLED ALUMINIUM WITH SATIN AMERICAN WALNUT
 WARM CHARCOAL INSTRUMENT PANEL UPPER AND DOOR TOP ROLLS



XF PREMIUM LUXURY

3.0 V6 PETROL

3.0 V6 DIESEL

3.0 V6 DIESEL S

5.0 V8 PETROL

WITH ENHANCEMENTS FROM SOFTGRAIN LEATHER,
AND HAND-FINISHED WOOD VENEERS TO ADDITIONAL
TECHNICAL FEATURES, THE XF PREMIUM LUXURY
DELIVERS MORE REWARD FOR THE LONG DRIVE





EXTERIOR CHOICE

ALLOY WHEELS



18" Cygnus

18" Venus

19" Artura

19" Carelia

20" Senta

20" Selena

Engine

- 3.0 V6 Petrol ●
- 3.0 V6 Diesel ●
- 3.0 V6 Diesel S ●
- 5.0 V8 Petrol ●

-
-
-
-

-
-
-
-

-
-
-
-

-
-
-
-

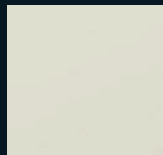
-
-
-
-

- Standard
- Option
- Not available

EXTERIOR COLOURS

Standard

Options



Porcelain



Ebony

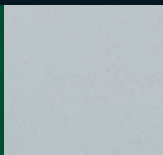


Botanical Green*

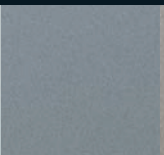
*Metallic paint



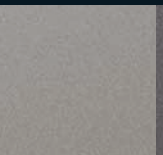
Emerald Fire*



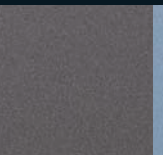
Liquid Silver*



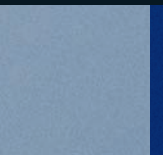
Lunar Grey*



Vapour Grey*

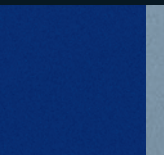


Pearl Grey*



Azure Blue*

Available until mid 2009



Spectrum Blue*

Available from mid 2009



Frost Blue*

INTERIOR CHOICE

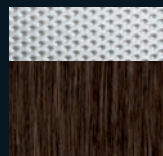
VENEERS

Standard

Option



Knurled Aluminium with Burr Walnut



Knurled Aluminium with Rich Oak

INTERIOR ENVIRONMENT

Standard

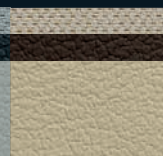
Option



Warm Charcoal seats with Warm Charcoal and Dove



Dove seats with Warm Charcoal and Dove



Barley seats with Truffle and Canvas



Ivory seats with Oyster and Canvas

Headlining
Upper fascia

Seat Trim

HEADLININGS

Standard



Canvas

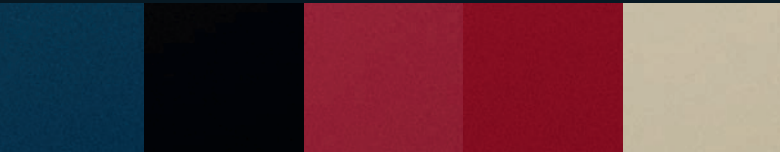


Dove



Jaguar 320W premium sound system

Jaguar Smart Key System™ with Keyless entry



Indigo*

Ultimate Black*

Radiance*
Available until mid 2009

Claret*
Available from mid 2009

Winter Gold*
Please check availability with
your local dealer



SOFTGRAIN LEATHER ON SEATS, INSTRUMENT PANEL
UPPER AND DOOR TOP ROLLS
JAGUAR 320W PREMIUM SOUND SYSTEM
JAGUAR SMART KEY SYSTEM™ WITH KEYLESS ENTRY
HEATED FRONT SEATS
POWER FOLD DOOR MIRRORS
HEATED FRONT WINDSCREEN
AUTO DIMMING REAR VIEW MIRROR
AVAILABLE BOWERS & WILKINS 440W SOUND SYSTEM
WITH PORTABLE AUDIO INTERFACE (MP3 CONNECTION)

INTERIOR SHOWN

BARLEY SOFTGRAIN LEATHER SEATS
KNURLED ALUMINIUM WITH BURR WALNUT
TRUFFLE SOFTGRAIN LEATHER INSTRUMENT
PANEL UPPER AND DOOR TOP ROLLS



XF PORTFOLIO

3.0 V6 PETROL
3.0 V6 DIESEL
3.0 V6 DIESEL S
5.0 V8 PETROL

SPORTING LUXURY COMES TO LIFE IN THE WIDE CHOICE OF EXQUISITE CRAFTSMANSHIP, FINE MATERIALS AND RICH SPECIFICATIONS OF JAGUAR'S NEW PORTFOLIO SERIES





EXTERIOR CHOICE

ALLOY WHEELS



19" Artura

19" Carelia

20" Selena

20" Senta



19" Artura Alloy Wheels

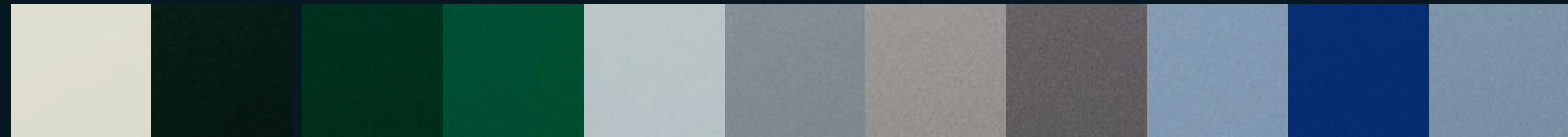
Engine

| | | | | | |
|-----------------|---|---|---|---|-----------------|
| 3.0 V6 Petrol | ● | ○ | ○ | ○ | ● Standard |
| 3.0 V6 Diesel | ● | ○ | ○ | ○ | ○ Option |
| 3.0 V6 Diesel S | ● | ○ | ○ | ○ | - Not available |
| 5.0 V8 Petrol | ● | ○ | ○ | ○ | |

EXTERIOR COLOURS

Standard

Options



Porcelain

Ebony

Botanical Green*

Emerald Fire*

Liquid Silver*

Lunar Grey*

Vapour Grey*

Pearl Grey*

Azure Blue*

Available until mid 2009

Spectrum Blue*

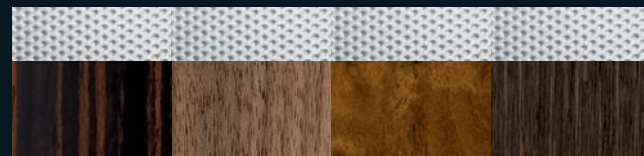
Available from mid 2009

Frost Blue*

INTERIOR CHOICE

VENEERS

Standard



Knurled Aluminium with Figured Ebony

Knurled Aluminium with Satin American Walnut

Knurled Aluminium with Burr Walnut

Knurled Aluminium with Rich Oak

INTERIOR ENVIRONMENT

Standard



Headlining
Upper facia

Seat Trim

Warm Charcoal seats with Warm Charcoal and Ivory contrast stitch and Dove

Barley seats with Truffle and Barley contrast stitch and Canvas

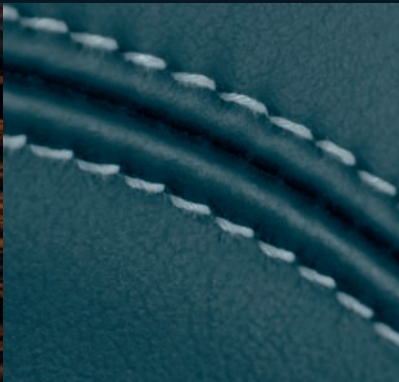
Spice seats with Warm Charcoal and Spice contrast stitch and Canvas

Ivory seats with Truffle and Ivory contrast stitch and Canvas

Ivory seats with Oyster and Ivory contrast stitch and Canvas



Unique Figured Ebony veneer



Softgrain leather with twin needle contrast stitch



Indigo*

Ultimate Black*

Radiance*

Claret*

Winter Gold*

Available until mid 2009

Available from mid 2009

Please check availability with your local dealer

HEADLININGS

Standard



Canvas Jaguar Suedecloth Premium Headlining

Dove Jaguar Suedecloth Premium Headlining

TWIN NEEDLE CONTRAST STITCHING WITH UNIQUE COLOURWAYS

SUEDECLOTH PREMIUM HEADLINING

DEEP PILE CARPET MATS WITH CONTRAST EDGE BINDING

UNIQUE FIGURED EBONY VENEER

ACTIVE VENTILATED FRONTS SEATS - HEATED/COOLED

INTERIOR SHOWN

IVORY SOFTGRAIN LEATHER SEATS

KNURLED ALUMINIUM WITH FIGURED EBONY

OYSTER SOFTGRAIN LEATHER WITH IVORY CONTRAST STITCH ON INSTRUMENT PANEL UPPER AND DOOR TOP ROLLS



XFR

5.0 V8 SUPERCHARGED

JAGUAR'S RACING HEART BEATS FASTEST
IN THE SUPERCHARGED XFR - THE MOST
DYNAMIC, MOST EXHILARATING EXPRESSION
OF JAGUAR SPORTING LUXURY





EXTERIOR CHOICE

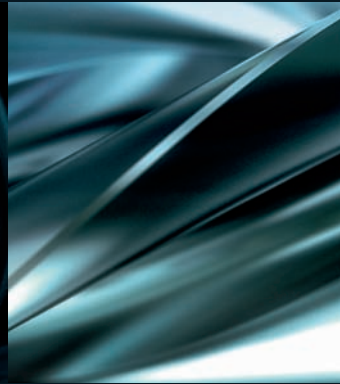
ALLOY WHEELS



20" Nevis



R Performance 20" Nevis Wheels



Supercharger

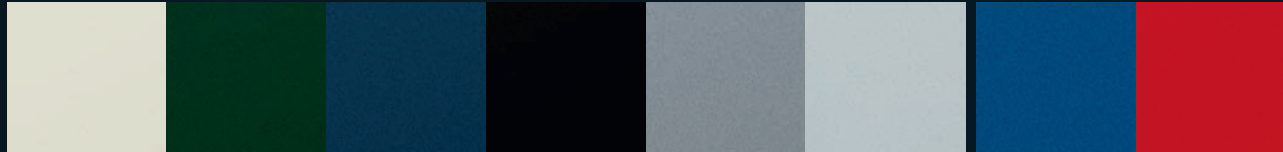


Adaptive Dynamics

EXTERIOR COLOURS

Standard

Unique to XFR



Porcelain

Botanical Green*

*Metallic paint

Indigo*

Ultimate Black*

Lunar Grey*

Liquid Silver*

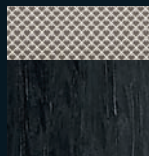
Kyanite Blue*

Salsa

INTERIOR CHOICE

VENEERS

Standard



Dark Mesh Aluminium with Dark Oak

INTERIOR ENVIRONMENT

Standard

Option



Warm Charcoal with Warm Charcoal and Dove

Red Zone and Warm Charcoal seats with Warm Charcoal and Red Zone contrast stitch and Dove

London Tan and Warm Charcoal seats with Warm Charcoal and London Tan contrast stitch and Canvas

Warm Charcoal and Ivory seats with Warm Charcoal and Ivory contrast stitch and Canvas

Headlining

Upper facia

Seat Trim

HEADLININGS

Standard

Option



Canvas Jaguar Suedecloth Premium Headlining

Dove Jaguar Suedecloth Premium Headlining

Jet Jaguar Suedecloth Premium Headlining



Bonnet Louvres



R branded steering wheel



5.0 V8 SUPERCHARGED ENGINE
 ADAPTIVE DYNAMICS
 ACTIVE DIFFERENTIAL CONTROL
 JAGUAR R STYLING

Unique front bumper with larger air intakes
 R Performance 20" Nevis wheels
 Quad exhaust tailpipes
 Sports seats with electrically adjustable side bolsters

R PERFORMANCE BRAKING SYSTEM

INTERIOR SHOWN

LONDON TAN AND WARM CHARCOAL
 SOFTGRAIN LEATHER SEATS WITH
 LONDON TAN CONTRAST STITCH
 DARK MESH ALUMINIUM WITH DARK OAK
 WARM CHARCOAL SOFTGRAIN LEATHER
 WITH LONDON TAN CONTRAST STITCH
 ON INSTRUMENT PANEL UPPER AND DOOR
 TOP ROLLS



XF ACCESSORIES

R PERFORMANCE AERODYNAMIC PACK,
CONSISTING OF FRONT BUMPER, SIDE APPLIQUES,
BOOT LID SPOILER, EXHAUST TAILPIPE FINISHERS
WITH OPTIONAL SCULPTED LED BLADES

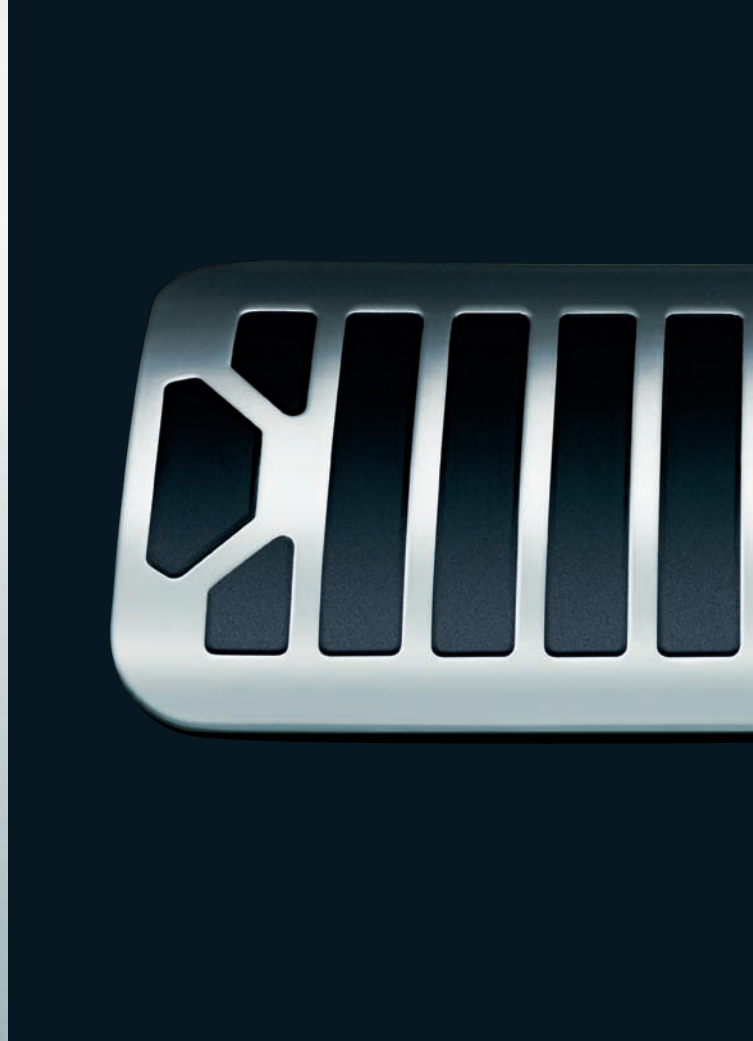


R PERFORMANCE AERODYNAMIC PACK

For more information on Accessories, please contact your Jaguar dealer



CHROME SIDE POWER VENT



BRIGHT FINISH PEDAL KIT

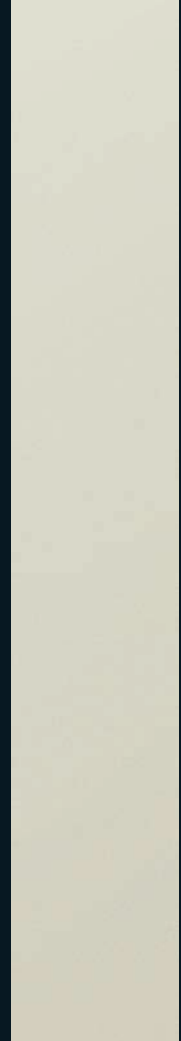




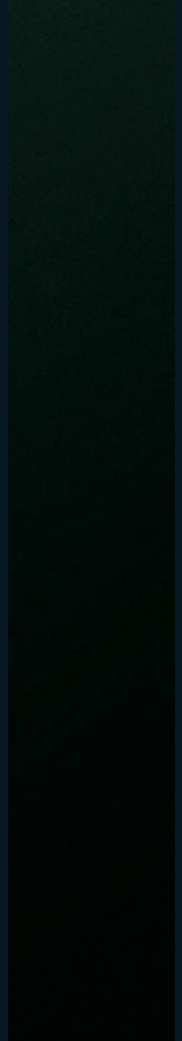
ILLUMINATED SILL TREAD PLATES



EXTERIOR COLOURS



Porcelain



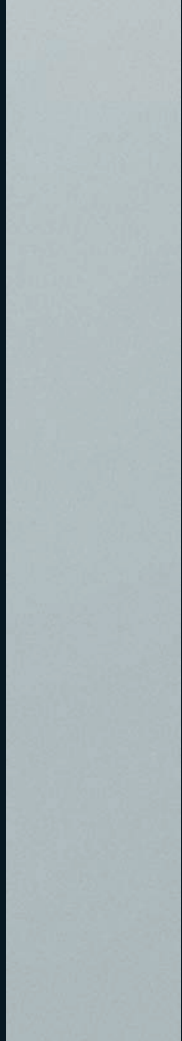
Ebony



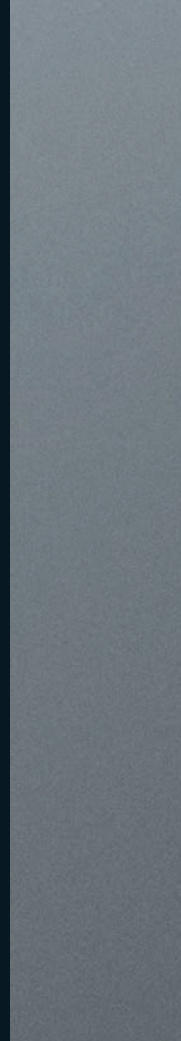
Botanical Green*



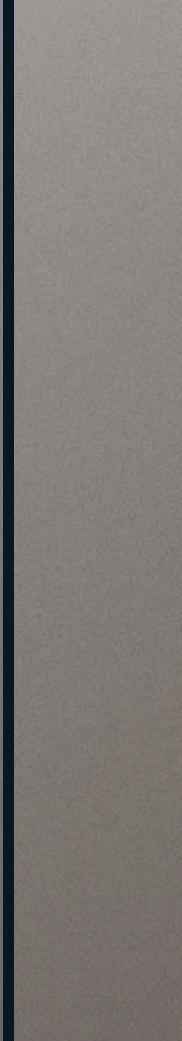
Emerald Fire*



Liquid Silver*



Lunar Grey*



Vapour Grey*



Pearl Grey*

Azure Blue*

Available until mid 2009

Spectrum Blue*

Available from mid 2009

Frost Blue*

Indigo*

Ultimate Black*

Radiance*

Available until mid 2009

Claret*

Available from mid 2009

Winter Gold*

Please check availability
with your local dealer

Kyanite Blue*

Unique to XFR

Salsa

Unique to XFR

*Metallic paint
For details of interior/exterior combinations, please see jaguar.com



LEATHERS AND TRIMS

Warm Charcoal
Bond Grain

Dove Bond Grain

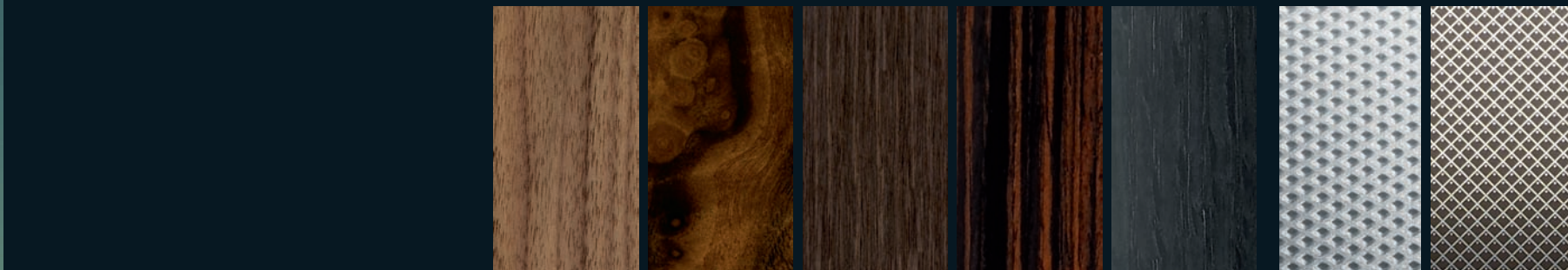
Barley Bond Grain

Truffle Bond Grain*

Warm Charcoal
Softgrain

Dove Softgrain

Barley Softgrain



VENEERS AND FINISHERS

Satin American
Walnut

Burr Walnut

Rich Oak

Figured Ebony
Unique to Portfolio

Dark Oak
Unique to XFR

Knurled Aluminium
Finisher

Dark Mesh
Aluminium Finisher
Unique to XFR





Truffle Softgrain*

Oyster Softgrain

Ivory Softgrain

Spice Softgrain

Red Zone Softgrain
Unique to XFR

London Tan Softgrain
Unique to XFR



CONTRAST STITCH

Warm Charcoal and Ivory contrast stitch

Truffle and Barley contrast stitch

Warm Charcoal and Spice contrast stitch

Oyster and Ivory contrast stitch

Truffle and Ivory contrast stitch

Warm Charcoal and Red Zone contrast stitch

Warm Charcoal and London Tan contrast stitch

*Instrument panel upper and door top rolls only.
For details of interior/exterior combinations, please see jaguar.com

POWERTRAIN AND DRIVING DYNAMICS

6-speed electronic automatic transmission with Jaguar Sequential Shift™
JaguarDrive Selector™
JaguarDrive Control™ with Winter Mode & Dynamic Mode¹
Servotronic Steering
Brake pad wear indicator¹
Cruise Control with Automatic Speed Limiter (ASL)
Electric Parking Brake (EPB)
Vented Disc Brakes, front and rear
DSC (Dynamic Stability Control) with Trac DSC mode
Traction Control

EXTERIOR FEATURES

LED rear lamps
Rain sensing windscreen wipers
Bright side window surrounds
Chrome grille surround with bright mesh grille
Rear Parking aid (includes Touch-screen visual indicator)
Acoustic laminated windscreen

SAFETY AND SECURITY

Airbags, front and side (driver and front passenger)
Side curtain airbags
Anti-lock Braking System (ABS)
Pedestrian Contact Sensing™ - automatically deployable bonnet system
Front seat whiplash reduction system
Front and rear seat belts pre-tensioners
ISOFIX anchor points for rear child seat
High level rear stop light
Cornering Brake Control (CBC)
Emergency Brake Assist (EBA)
Security system with volumetric and perimeter sensing alarm and vehicle immobiliser
Remote control central locking with deadlocking and drive-away locking function
Valet mode

WHEELS

Alloy space saver spare wheel

INTERIOR FEATURES

Automatic climate control
Steering column with electric adjustment for height and reach with entry and exit tilt-away
Front centre console storage compartment with auxiliary power socket
Triple front and twin rear cupholders
Front and rear electric windows with one-touch open/close and anti-trap
Driver information centre with dual function trip computer
JaguarSense™
Phosphor blue halo illumination and interior mood lighting
Jaguar Smart Key System™ with Keyless start

INTERIOR TRIM

Rear centre head restraint
Folding 60/40 split rear seats
Leather 3-spoke steering wheel with Jaguar Sequential Shift™ paddles and remote controls for audio, cruise control, Bluetooth® telephone connectivity and JaguarVoice™ (where fitted)

MULTIMEDIA

3.5mm stereo auxiliary input socket
Bluetooth® telephone connectivity
7-inch full colour Touch-screen

STANDARD FEATURES

| | LUXURY | PREMIUM LUXURY | PORTFOLIO | XFR |
|--|------------------|------------------|-----------------|-----|
| POWERTRAIN AND DRIVING DYNAMICS | | | | |
| 3.0 Litre V6 Petrol | ● | ● | ● | - |
| 3.0 Litre V6 Diesel | ● | ● | ● | - |
| 3.0 Litre V6 Diesel S | ● | ● | ● | - |
| 5.0 Litre V8 Petrol | - | ● | ● | - |
| 5.0 Litre V8 Petrol Supercharged | - | - | - | ● |
| Adaptive Dynamics | - | - | - | ● |
| Active Differential Control | - | - | - | ● |
| Adaptive Cruise Control (ACC) with Emergency Brake Assist | O ⁱⁱⁱ | O ⁱⁱⁱ | - | - |
| Adaptive Cruise Control (ACC) with Advanced Emergency Brake Assist | O ⁱⁱ | O ⁱⁱ | O ⁱⁱ | O |

EXTERIOR FEATURES

| | | | | |
|---|---|---|---|---|
| Heated exterior mirrors with electric adjustment and side repeaters | ● | - | - | - |
| Heated, auto dimming, powerfolding exterior mirrors with electric adjustment, side repeaters and approach lamps | P | ● | ● | ● |
| Blind Spot Monitor | - | O | O | O |
| Heated windscreen with timer | - | - | ● | ● |
| Halogen headlamps with automatic on/off and manual levelling | ● | ● | - | - |
| Headlamp washers | O | O | - | - |
| Bi-Xenon headlamps with integrated cornering lamps, headlamp washers and automatic levelling | - | - | ● | ● |
| Electric glass sunroof with tilt/slide one touch operation | O | O | O | ● |
| Metallic paint | O | O | O | ● |
| Rear spoiler | A | A | A | ● |
| Bonnet louvres with Supercharged script | - | - | - | ● |
| R Exterior Theme | - | - | - | ● |
| Front parking aid with rear camera | P | P | P | P |
| Diesel misfueling protection device | ● | ● | ● | - |

SAFETY AND SECURITY

| | | | | |
|--|---|---|---|---|
| Tyre Pressure Monitoring System (TPMS) | O | O | O | O |
|--|---|---|---|---|

WHEELS

| | | | | |
|----------------|----------------|----------------|----------------|---|
| Run-flat tyres | O [▲] | O [▲] | O [▲] | - |
|----------------|----------------|----------------|----------------|---|

INTERIOR FEATURES

| | | | | |
|---|---|---|---|---|
| Auto recirculation - Climate Control | O | O | O | O |
| Manual dipping interior rear view mirror | ● | - | - | - |
| Auto-dimming interior rear view mirror | - | ● | ● | ● |
| Garage door opener [†] | - | - | - | ● |
| Electric rear window sunblind | O | O | O | O |
| Jaguar Smart Key System [™] with Keyless entry | O | ● | ● | ● |

OPTIONAL FEATURES

Please consult your local dealer for details.

Please refer to the glossary for a more detailed description of features

● Standard O Option P Option as part of Pack NCO No Cost Option A Accessory fit - Not available

* Jaguar Tyre Repair System is not available with 19 inch or 20 inch wheels, or where the Jaguar 320W premium sound system or the Bowers & Wilkins 440W surround sound system is specified. The space saver spare wheel is required and must be specified instead

** Portable Audio Interface with in-dash single CD player in lieu of in-dash 6-disc player available only with Jaguar sound system or Jaguar 320W premium sound system

[†] Garage door opener is only available with auto dimming mirror contained in the Mirror Packs

ⁱ Not available on 3.0L V6 Petrol

ⁱⁱ For availability please consult your local dealer or visit jaguar.com

ⁱⁱⁱ For 3.0L V6 Petrol only

[‡] Contrast stitching not available if Warm Charcoal with Warm Charcoal interior selected.

■ Linked option: JaguarVoice[™] is only available with Navigation.

[▲] Only available with Artura 8.5J x 19 inch alloy wheel

INTERIOR TRIM

| | LUXURY | PREMIUM LUXURY | PORTFOLIO | XFR |
|--|--------|----------------|-----------|-----|
| Bond Grain seats with leather seat facings (8/8 way) in Dove, Barley or Warm Charcoal | ● | - | - | - |
| 2-way lumbar support for front seats (10/10 way) and memory function with 2 settings for driver's seat, exterior mirrors and steering column | O | - | - | - |
| Softgrain leather seats (10/10 way) in Dove, Barley and Warm Charcoal | - | ● | - | - |
| Softgrain leather seats (16/12 way) in Barley, Warm Charcoal and Spice | - | - | ● | - |
| R Softgrain leather seats (18/14 way) in Warm Charcoal, London Tan and Red Zone | - | - | - | ● |
| Memory function with 2 settings for driver's seat, exterior mirrors and steering column | - | ● | ● | ● |
| Front seats – active ventilated, heated and cooled | - | ● | ● | ● |
| Heated front seats | P | P | - | - |
| Bond Grain stitched and tailored instrument panel and door top rolls | ● | - | - | - |
| Softgrain leather stitched and tailored instrument panel and door top rolls | - | ● | - | - |
| Softgrain leather stitched and tailored instrument panel and door top rolls with contrast stitching | - | - | ● | ‡ |
| Heated steering wheel | - | - | O | - |
| Front and rear carpet mat set | O | ● | - | - |
| Front and rear premium carpet mat set | - | - | ● | ● |
| Jaguar Suedecloth Premium Headlining | - | - | ● | ● |
| Jet Jaguar Suedecloth Premium Headlining | - | - | - | O |

INTERIOR THEMES

| | | | | |
|--------------------|---|---|-----|---|
| R Interior theme | - | - | - | ● |
| Ivory leather trim | - | O | NCO | O |

MULTIMEDIA

| | | | | |
|--|-----|-----|---|-----|
| Jaguar sound system with in-dash 6 disc CD player | ● | - | - | - |
| Jaguar 320W premium sound system with in-dash 6 disc CD player | O | ● | - | ● |
| Portable Audio Interface with in-dash single CD player (in lieu of in-dash 6-disc player)** | O** | O** | - | O** |
| Bowers & Wilkins 440W surround sound system with in-dash 6 disc CD player and Portable Audio Interface | - | O | ● | O |
| Navigation system | O | O | O | O |
| JaguarVoice [™] ■ | O | O | O | O |
| Digital/Analogue television | - | O | O | O |

PACKS

| | | | | |
|---|---|---|---|---|
| Parking Aid Pack with Rear Camera | O | O | O | O |
| Mirror Pack | O | - | - | - |
| Mirror Pack with Blind Spot Monitor | O | - | - | - |
| Luxury Winter Comfort Pack | O | - | - | - |
| Premium Luxury Winter Comfort Pack | - | O | - | - |
| Luxury Winter Comfort Memory Pack | O | - | - | - |
| All-Season Comfort Pack | - | O | - | - |
| Visibility Pack | O | O | - | - |
| Visibility Pack with Bi-Xenon Headlamps | O | O | - | - |



Active Differential Control

An electronically controlled, active differential with Handling Functionality that limits the slip between the rear wheels to optimise traction and stability in different driving conditions, working in harmony with the Traction, ABS and DSC systems.

Adaptive Dynamics

Provides the optimum balance between low speed ride comfort and high speed handling precision, analysing body movement, steering and road wheel inputs up to 500 times a second and continuously adjusting the suspension settings through electronically controlled dampers.

DSC (Dynamic Stability Control)

Intervenes in demanding driving situations by applying braking to individual wheels and reducing engine torque.

Trac DSC mode

Provides a higher intervention threshold for the more enthusiastic driver.

Jaguar Sequential Shift™

Provides the choice of Drive, Sport Automatic or Manual gearshift modes, with one touch paddles mounted behind the steering wheel to control gear changes up and down manually.

Bond Grain seats with leather seat facings (8/8 way)

Driver's and passenger's electric adjustment including fore/aft, height, cushion tilt, and recline.

Bond Grain seats with leather seat facings (10/10 way)

As 8/8 way seats but with the addition of 2-way lumbar support on driver's and passenger's seat. Also includes memory function.

Softgrain leather seats (10/10 way)

Driver's and passenger's electric adjustment including fore/aft, height, cushion tilt, recline, 2-way lumbar support. Also includes memory function.

Softgrain leather seats (16/12 way)

Driver's electric adjustment including fore/aft, height, cushion tilt, recline, headrest height, 4-way lumbar support, cushion length and passenger's electric adjustment including fore/aft, height, cushion tilt, recline, headrest height and 2-way lumbar support. Also includes memory function.

Softgrain leather seats (18/14 way)

As 16/12 way seats but with the addition of adjustable side bolsters for the driver's and passenger's seat backs. Also includes memory function.

Navigation system^{(1) (2)}

With DVD mapping, postcode entry, destination entry on the move, voice guidance and Traffic Messaging Channel where available (a real time traffic information system with dynamic route guidance).

Jaguar sound system

140W system with AM/FM radio featuring EON, RDS, PTY, TA and 6-disc in-dash CD player with automatic volume control, WMA, MP3 compatibility and 8 speakers.

Jaguar 320W premium sound system

With AM/FM radio featuring EON, RDS, PTY, TA and 6-disc in-dash CD player with automatic volume control, WMA, MP3 compatibility and 8 speakers plus Sub-Woofers.

Bowers & Wilkins 440W surround sound system

With AM/FM radio featuring EON, RDS, PTY, TA and 6-disc in-dash CD player with automatic volume control, WMA, MP3 compatibility, Portable Audio Interface, a remote amplifier with Dolby® Pro Logic® II surround sound and 13 speakers plus Sub-Woofers.

Windows Media Audio (WMA) and MP3 compatibility

Enables the CD player to play CDs which contain WMA and MP3 files (6-disc in-dash CD player only).

Bluetooth® telephone connectivity⁽³⁾

A Bluetooth® equipped Jaguar, enables hands-free use of your mobile phone at any time when the phone is in the car. Bluetooth® is compatible with a selected range of mobile phones from a number of different manufacturers.

JaguarVoice™

Voice control of telephone, navigation system and Touch-screen displays with note pad facility. Only available with navigation.

Portable Audio Interface⁽⁴⁾

Allows the connection of an iPod, MP3 player or a USB Mass Storage Device to the in-car sound system and control via the 7 inch Touch-screen.

GLOSSARY



7-inch full colour Touch-screen

Display with controls for audio, climate control, Bluetooth® telephone connectivity and (where fitted) navigation.

Mirror Pack

Heated exterior mirrors with electric adjustment, power folding, approach lamps and auto-dimming exterior and interior rear view mirror.

Mirror Pack with Blind Spot Monitor

As Mirror Pack (see above) plus Blind Spot Monitor.

Parking Aid Pack with Rear Camera

Parking aid with front sensors (includes Touch-screen visual indicator) and rear camera parking aid.

Luxury Winter Comfort Pack

Bond Grain seats with leather seat facings (8/8 way), with 3-stage heated front seats and heated steering wheel.

Luxury Winter Comfort Memory Pack

Bond Grain seats with leather seat facings (10/10 way), with 3-stage heated front seats and heated steering wheel plus memory function with 2 settings for driver's seat, exterior mirrors and steering column.

Premium Luxury Winter Comfort Pack

Softgrain leather seats (10/10 way) with 3-stage heated front seats and heated steering wheel.

Visibility Pack

Heated windscreen with timer and headlamp washers.

Visibility Pack with Bi-Xenon headlamps

As Visibility Pack with Bi-Xenon headlamps with integrated cornering lamps, headlamp washers and automatic levelling.

All Season Comfort Pack

Softgrain leather seats (10/10 way), with active ventilated heated and cooled front seats and heated steering wheel.

JaguarSense™

An electronic control system that operates the front overhead console lights and opening of the glove box by light touch.

Auto-recirculation - Climate Control

Automatic cabin air recirculation triggered by external odour sensor with 5 sensitivity settings.

R Exterior Theme

Unique deeper section front bumper with larger lower air intakes, side sill extensions, aerodynamic boot lid spoiler, body colour rear valance and quad exhaust tailpipes. 'Supercharged' embossed bonnet louvres for additional cooling. Silver-grey brake callipers with R logo. R badge on boot lid.

R Interior Theme

Unique sport themed interior incorporating a dark mesh aluminium finish on instrument panel and doors, Dark Oak veneer, Warm Charcoal upper and lower environment with contrast stitching and carpet mat edge binding (colour dependent on seat colour). Sports seats with embossed R logo (front and rear); R badging on steering wheel and instrument panel; instrument cluster dials with red pointers and Supercharged motif.

Wheel Specifications

Libra 7.5J x 17" alloy wheels
Venus 8.5J x 18" alloy wheels
Cygnus 8.5J x 18" alloy wheels
Artura 8.5J x 19" alloy wheels
Carelia 8.5J x 19" alloy wheels
Senta 8.5J x 20" alloy wheels
Selena 8.5J x 20" alloy wheels
Nevis 8.5J x 20" (front) 9.5J x 20" (rear) alloy wheels

¹Different DVDs exist in different regions. Please consult your dealer for details of which countries are covered by the DVD supplied with your vehicle.

²The navigation system must always be used in conditions that will not affect the driver's ability to drive safely or affect the safety of other road users.

³The Bluetooth® word mark and logos are owned by the Bluetooth SIG, Inc. and any use of such marks by Jaguar Cars Limited is under license.

⁴iPod is a trademark of Apple Inc., registered in the U.S. and other countries.



TECHNICAL SPECIFICATIONS

Overall length 4,961mm
Overall height 1,460mm
Wheelbase 2,909mm

Front track 1,559mm
Overall width inc. mirrors 2,053mm
Overall width with mirrors folded in 1,877mm
Internal width: Front 1,444mm
Internal headroom: Front 990mm
(Front 943mm when sunroof is fitted)

Rear track 1,571 - 1,605mm
Internal width: Rear 1,432mm
Internal headroom: Rear 956mm
(Rear 954mm when sunroof is fitted)

| ENGINES | | 3.0 Litre V6 Diesel AJ V6D GEN III | 3.0 Litre V6 Diesel S AJ V6D GEN III S | 3.0 Litre V6 Petrol | 5.0 Litre V8 Petrol AJ V8 GEN III | 5.0 Litre V8 Petrol Supercharged AJ V8 GEN III R |
|---------------------------------------|-------------------|--|--|------------------------|---|--|
| Cylinders/Valves per Cylinder | | 6/4 | 6/4 | 6/4 | 8/4 | 8/4 |
| Bore/Stroke | mm | 84/90 | 84/90 | 89/79.5 | 92.5/93 | 92.5/93 |
| Capacity | cc | 2,993 | 2,993 | 2,967 | 5,000 | 5,000 |
| Maximum power | EEC-PS (kW) | 240 (177) | 275 (202) | 238 (175) | 385 (283) | 510 (375) |
| @rev/min | | 4,000 | 4,000 | 6,800 | 6,500 | 6,000-6,500 |
| Maximum torque | EEC-Nm (lb.ft.) | 500 (369) | 600 (443) | 293 (216) | 515 (380) | 625 (461) |
| @rev/min | | 2,000 | 2,000 | 4,100 | 3,500 | 2,500-5,500 |
| Compression ratio:1 | | 16.0 | 16.0 | 10.5 | 11.5 | 9.5 |
| Transmission | | 6-speed automatic | 6-speed automatic | 6-speed automatic | 6-speed automatic | 6-speed automatic |
| PERFORMANCE | | | | | | |
| Acceleration | 0-100 km/h - sec. | 7.1 | 6.4 | 8.3 | 5.7 | 4.9 |
| Top speed | kph | 240 (limited) | 250 (limited) | 237 | 250 (limited) | 250 (limited) |
| FUEL CONSUMPTION⁽¹⁾ | | | | | | |
| Urban | l/100km | 9.5 | 9.5 | 15.8 | 17.3 | 18.7 |
| Extra Urban | l/100km | 5.5 | 5.5 | 7.5 | 7.8 | 8.7 |
| Combined | l/100km | 6.8 | 6.8 | 10.5 | 11.1 | 12.5 |
| Carbon dioxide emissions | g/km | 179 | 179 | 249 | 264 | 292 |
| Tank capacity | ltr approx. | 69.5 | 69.5 | 69.5 | 69.5 | 69.5 |
| Usable tank capacity | ltr approx. | 64.0 | 64.0 | 64.0 | 64.0 | 64.0 |
| WEIGHT⁽²⁾ | | | | | | |
| Weight | kg | 1,820 | 1,820 | 1,690 | 1,780 | 1,891 |
| Gross vehicle weight | kg | 2,360 | 2,360 | 2,215 | 2,285 | 2,345 |

Permitted trailer load, unbraked – 750kg⁽³⁾ Permitted trailer load, braked – 1850kg⁽³⁾ Permitted towbar download – 75kg⁽³⁾ Turning circle – 11.48m Boot volume with Jaguar Tyre Repair System - 540 litres – VDA Boot volume with space saver – 500 litres - VDA
 Boot volume with rear seats folded and Jaguar Tyre Repair System – 963 litres – VDA Boot volume with rear seats folded and space saver – 923 litres – VDA

⁽¹⁾ These figures are correct at time of going to press.

⁽²⁾ Please consult your dealer for details of charges associated with option fitment. Weights reflect vehicles to standard specifications. Optional extras increase weight.

⁽³⁾ Not applicable on 5.0 Litre V8 Petrol and 5.0 Litre V8 Petrol Supercharged

THE XF OWNERSHIP EXPERIENCE.

Service, assurance, and peace of mind are all part of the pride of owning your XF.

THE JAGUAR ACCESSORY RANGE

Enabling you to personalise your car, to create a driving experience that is even more individually rewarding. All Jaguar accessories are tested rigorously for safety and durability in the most arduous of climates and conditions. A comprehensive range of styling options, interior and exterior accessories, enabling you to tailor your XF to suit your personal style.

BECAUSE ONLY THE BEST WILL DO

An official Jaguar dealer or Approved Service Centre can ensure that Jaguar trained, specialist technicians, with access to the full range of Jaguar approved parts and tools, will always be on hand to guarantee that every fitting, or repair, is carried out exactly the way Jaguar intended. Your Jaguar dealer or Approved Service Centre can also supply and fit Jaguar approved accessories to personalise and add to the practicality and style of your XF model.

SERVICE AND ASSURANCE*

Complete peace of mind including Competitively Priced Servicing, Seasonal Health Checks and Total Tyre Care to ensure that your Jaguar XF retains its premium condition, delivering optimal performance.

WARRANTY*

3 year warranty together with a 3 year Paint Surface Warranty and a 6 year Corrosion (Perforation) Warranty.

JAGUAR MAGAZINE

Bringing to life Jaguar's racing heart, Jaguar Magazine is our owner publication. It combines features on our legendary performance, the inside track on our products and company, along with news and events from the world of Jaguar.

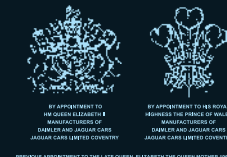
JAGUAR.COM

The interactive jaguar.com website features helpful tools such as the dealer locator, model specifications – allowing you to see the car tailored to your specification and colour – and price lists; the latest information on all the Jaguar models and a fascinating look into the passion and legacy that infuse the Jaguar name.

JAGUAR FINANCIAL SERVICES*

Whether your requirements are business or personal, Jaguar Financial Services offers maximum choice and flexibility with a wide range of financial and insurance plans tailored to your needs.

*Terms and conditions apply. Please contact your Jaguar dealer for more information.



IMPORTANT NOTICE

Jaguar Cars Limited is constantly seeking ways to improve the specification, design and production of its vehicles and alterations take place continually. Whilst every effort is made to produce up-to-date literature, this brochure should not be regarded as an infallible guide to current specifications, nor does it constitute an offer for the sale of any particular vehicle. Distributors and dealers are not agents of Jaguar Cars Limited and have absolutely no authority to bind Jaguar Cars Limited by any express or implied undertaking or representation. Illustrations in this brochure may include optional extras.

Comparisons are based on manufacturer's own data and testing.

ENVIRONMENTAL NOTICE

Jaguar Cars Limited has a vision of being amongst the world's leading companies in demonstrating progress towards sustainability. We aim to do this by contributing to a better quality of life, with corporate citizenship at the very heart of our company, and by reducing our environmental footprint through innovative design and manufacturing, minimizing resource and energy use. Environmental responsibility is a core value in Jaguar, and it is our policy to continually improve our environmental standards in all areas of business activity.

This brochure is produced using paper stock, which contains 50% recycled post consumer waste and controlled wood material from well managed forests. Pulps used are Elemental Chlorine Free.

ILLUSTRATIONS

- Page 5: XFR in Ultimate Black with Nevis alloy wheels
- Page 6: XFR in Ultimate Black with Nevis alloy wheels
- Page 9: XFR with Warm Charcoal Softgrain leather seats, Warm Charcoal Softgrain leather upper and Dark Oak veneer
- Page 11: XF Premium Luxury in Liquid Silver with optional Carelia alloy wheels
- Page 14: XFR in Ultimate Black with Nevis alloy wheels
- Page 17: XFR in Ultimate Black with Nevis alloy wheels
- Page 19: XF Premium Luxury in Liquid Silver with Carelia alloy wheels
- Page 20: XF Portfolio in Liquid Silver with Selena alloy wheels
- Page 25: XFR with Dark Mesh Aluminium and Dark Oak veneer
- Page 28: XFR in Ultimate Black with Nevis alloy wheels
- Page 35: XFR in Ultimate Black with Nevis alloy wheels

Jaguar Cars Limited,
Registered Office: Abbey Road, Whitley,
Coventry, CV3 4LF, United Kingdom
Registered in England Number: 1672070
jaguar.com



Printed in England JLM/21/02/30/0109

