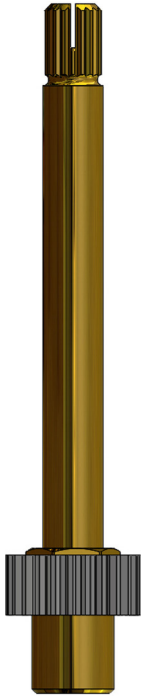


AMERICAN STANDARD*

18
3-30



Drive Shaft for Ceratherm

157210

3.62"

OEM: 953155-0070A

MOEN*

20
3-20



35mm Ceramic Diverter

Cartridge

CC19096

2.85"

OEM: 194149



MOEN*

20
3-20



24

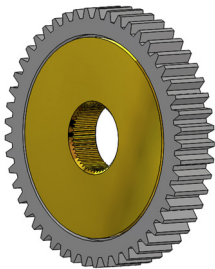
Plastic Broach Adapter

156400

1.74"

24pt Moen Female X 20pt .45"

AMERICAN STANDARD*



Thermostatic Valve Gear

157240

OEM: 953156-0070A

To Order, Email Orderdesk@barrywalter.com or Fax 1-800-886-9831 - BarryWalter.com

*Original Mfg's names are used for identification only and are not a representation that the items offered are genuine items of the original Mfg.

PEGLER*

36
.625"



Thermostatic Cartridge

488250

PRICE PFISTER*



Pressure Balanced Assembly

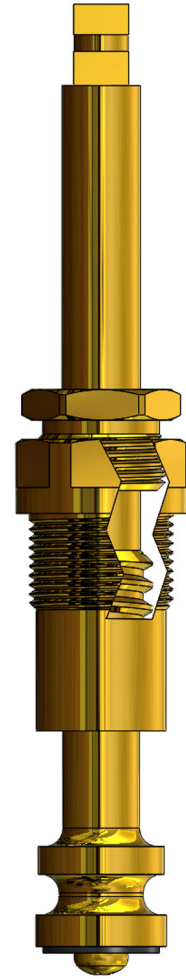
PP11704

4.165"

OEM: 974-321

SPEAKMAN*

.300"



Stem Unit

418321

5.09"

To Order, Email Orderdesk@barrywalter.com or Fax 1-800-886-9831 - BarryWalter.com

*Original Mfg's names are used for identification only and are not a representation that the items offered are genuine items of the original Mfg.

STREAMWAY*



Diverter Unit

432940

5.34"

STREAMWAY*

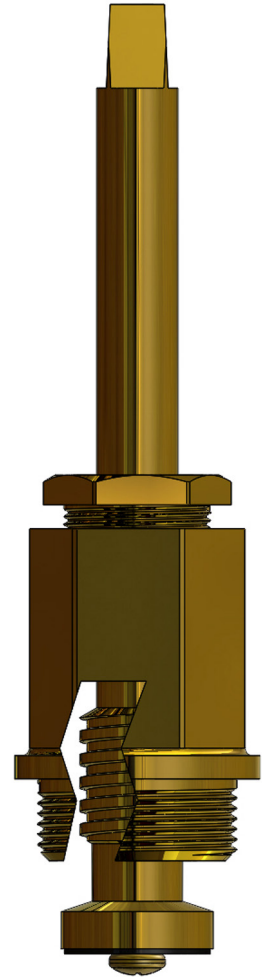


Diverter Unit

431430

3.45"

UNKNOWN



S/V Stem

418461

5.08"

To Order, Email Orderdesk@barrywalter.com or Fax 1-800-886-9831 - BarryWalter.com

**Original Mfg's names are used for identification only and are not a representation that the items offered are genuine items of the original Mfg.*



Pressure Balance Cartridge

VA12253

3.94"

OEM: V4268

To Order, Email Orderdesk@barrywalter.com or Fax 1-800-886-9831 - BarryWalter.com

**Original Mfg's names are used for identification only and are not a representation that the items offered are genuine items of the original Mfg.*