




*Loading, Removing, and Configuring Media
Checking and Cleaning the Print Head
Maintaining the Printer
Control Panel Maps and Menus
Ordering Supplies and Getting Help
Media Configuration Log*

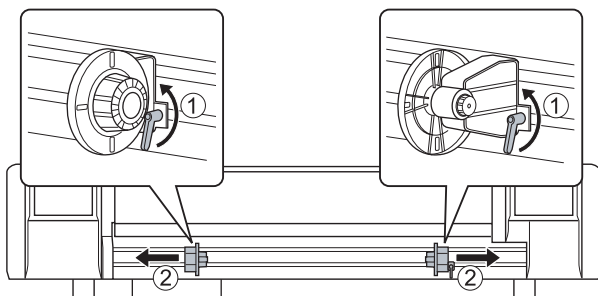
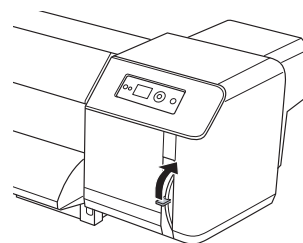
Epson Stylus[®] Pro GS6000

QUICK REFERENCE GUIDE

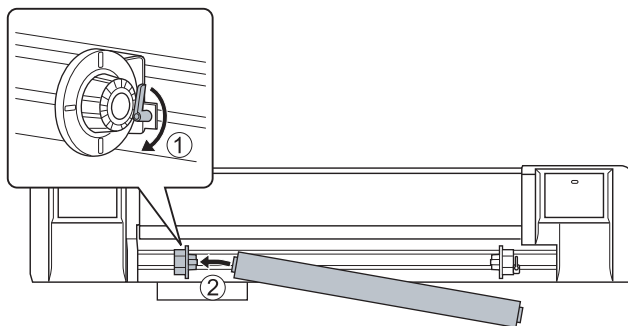
Loading, Configuring, and Removing Media

Loading Media in the Epson Stylus® Pro GS6000

1. Make sure the  Power light is not flashing, then move the paper lever to the Released position.
2. Flip up the levers and slide the roll paper holders apart.

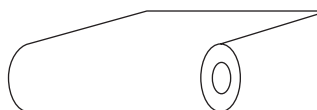


3. Slide the left holder into position, lock the lever, and place the media on the holder. Then slide the right holder onto the roll and lock the lever.

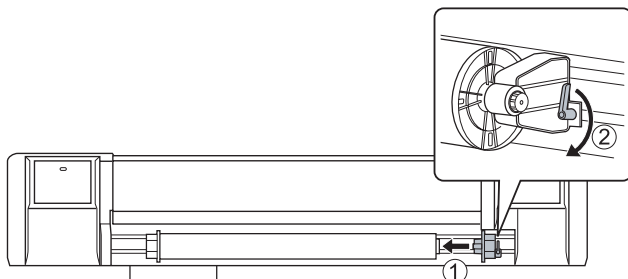
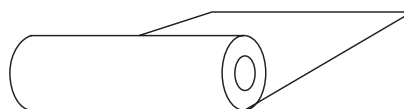


Orient the roll based on the printable side

Printable side out

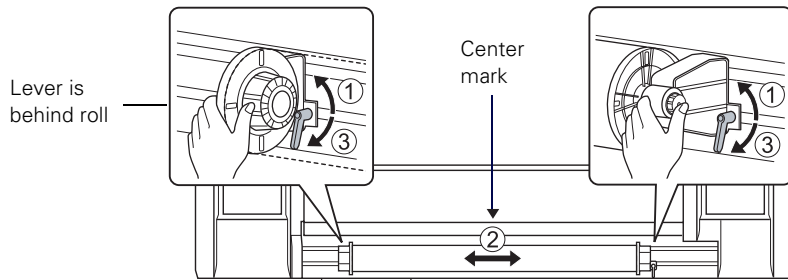


Printable side in

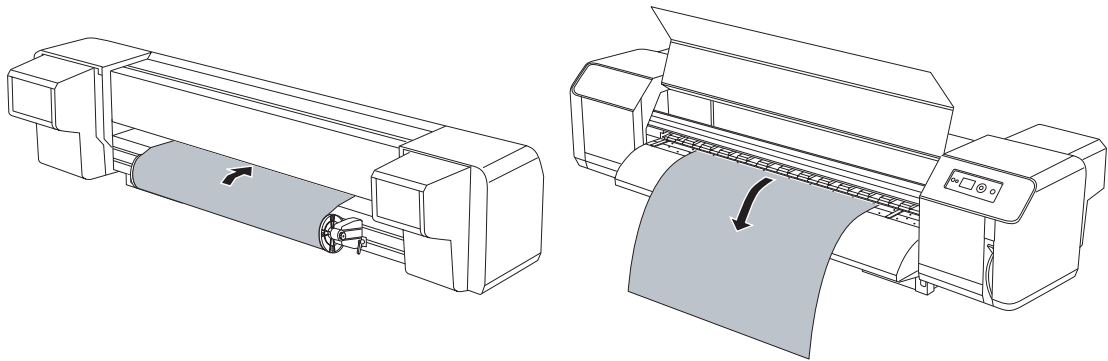


2 | Loading Media in the Epson Stylus® Pro GS6000

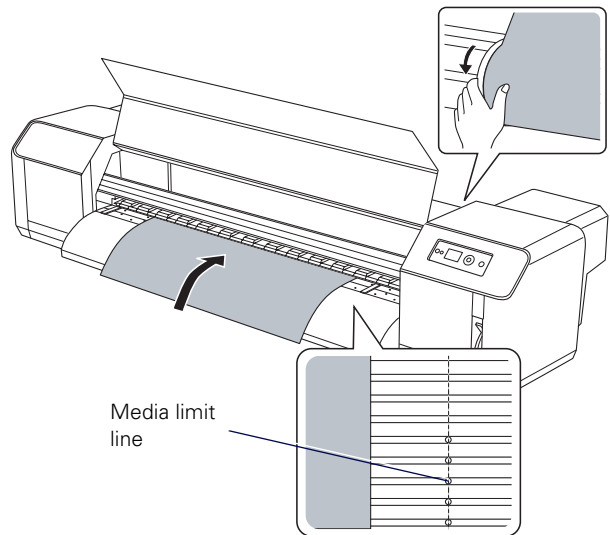
4. Release both levers, move the center of the roll to the ▼ mark, and lock the levers again.



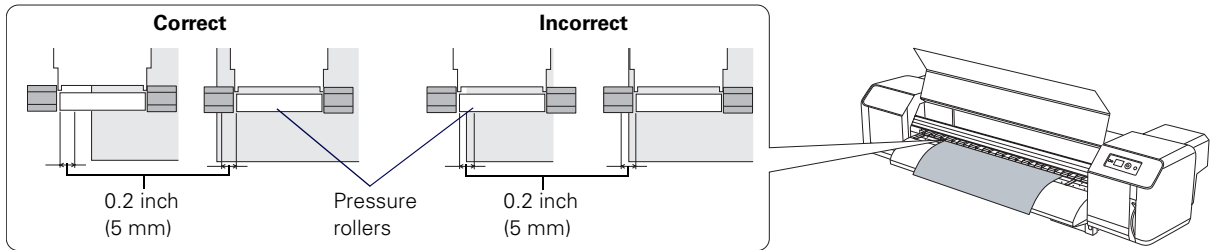
5. Open the front cover, then carefully feed the media into the slot and through to the front and out about 3 ft (1 m).



6. Turn the roll backward to remove any slack and make sure the edge of the media does not extend beyond the media limit line.

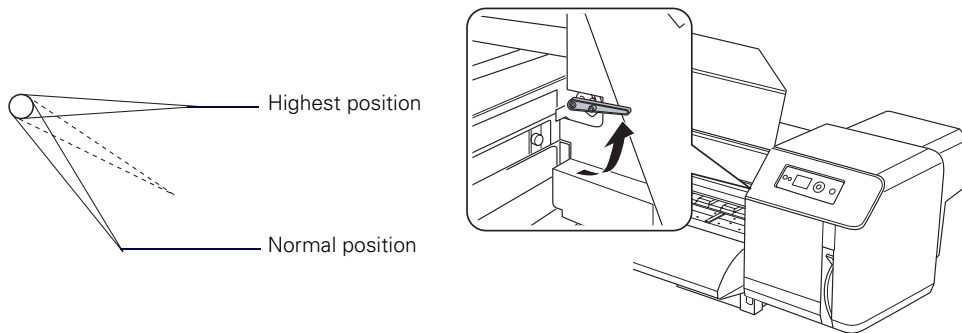


7. Make sure the edges of the media are at least 0.2 inch (5 mm) away from the edges of the nearest clear rubber pressure roller.



To adjust the media's horizontal position, release the roll holder levers, move the media, and lock the levers again.

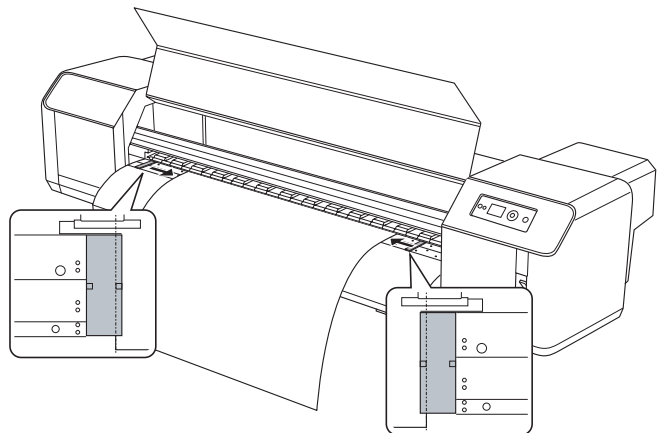
8. If you loaded thick media, you may need to adjust the platen gap (head height) setting. Flip the blue head height adjustment lever up to the position shown. (Do not place the lever in any other position.)



9. Slide the paper holder plates over both edges of the media.

Caution: If the paper holder plates interfere with printing, they may become deformed and cause paper jams or damage to the print head. If the plates become damaged, stop using the printer and contact Epson.

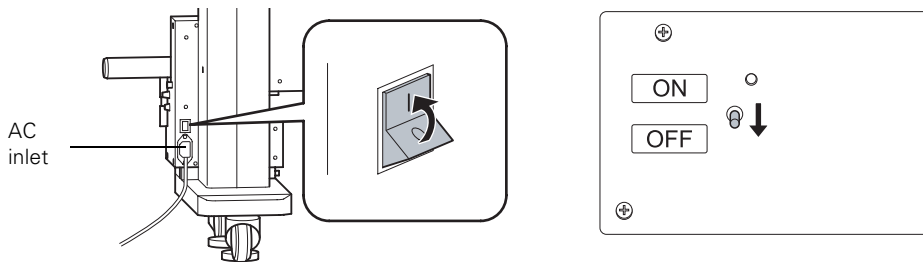
10. Move the paper lever to the **Secured** position.
11. Close the front cover.



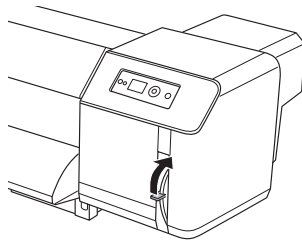
Using the Auto Take-Up Reel

Make sure you have placed an empty media core on the Auto Take-Up Reel scroller bar.

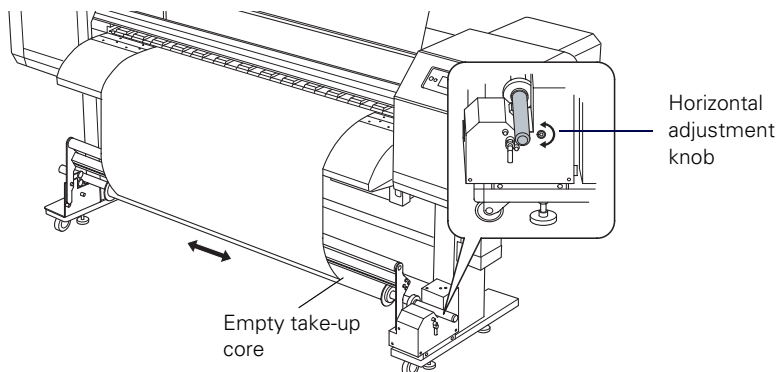
1. Make sure the **AUTO TAKE-UP REEL** setting is set to **ON** in the **PRINTER SETUP** menu. See page 19.
2. Turn on the Auto Take-Up Reel, and set the switch on the top of the reel controller to **OFF**.



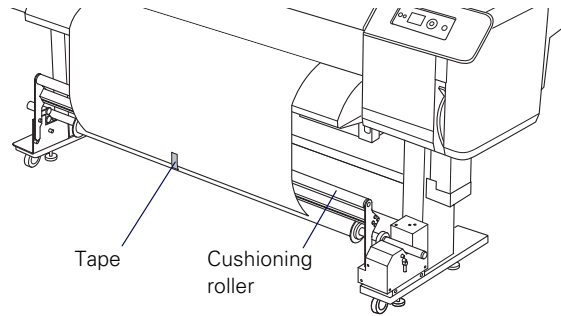
3. Move the paper lever to the **Released** position.



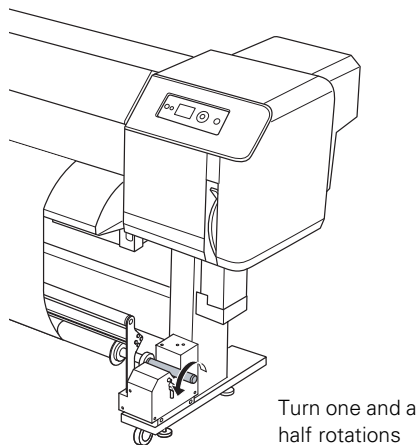
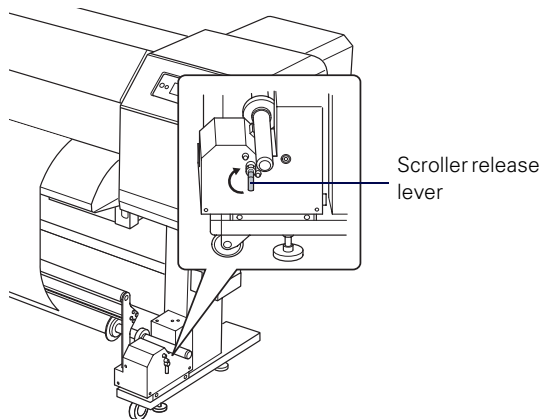
4. If the media is not in the center of the empty take-up core, turn the adjustment knob clockwise to move the core left, or counter-clockwise to move the core right.



5. Guide the media over the cushioning roller and onto the core, then tape the edge to the center of the core.

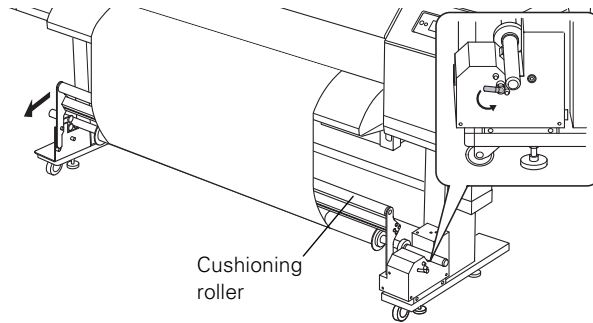


6. Flip the scroller release lever up to the FREE position. Then turn the scroller counter-clockwise one and a half rotations to take up the media.

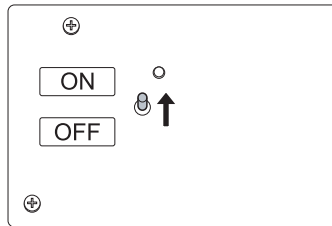


6 | Loading Media in the Epson Stylus® Pro GS6000

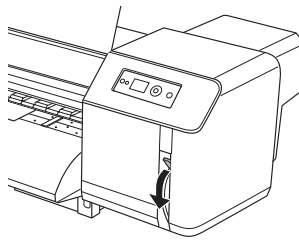
7. Flip down the scroller release lever to the **SET** position and pull the cushioning roller forward.



8. Set the switch on the top of the reel controller to **ON**.

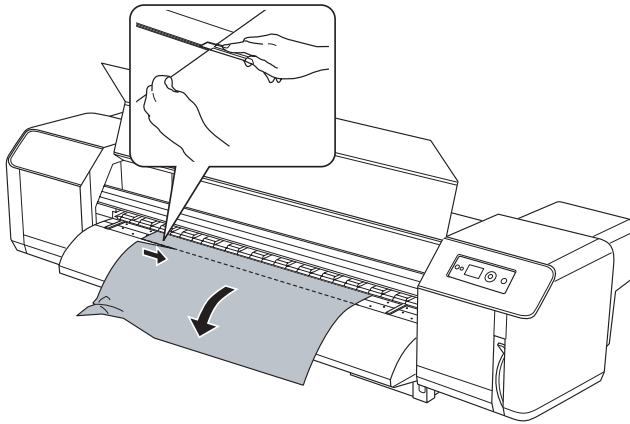


9. Set the paper release lever to the **Secured** position.



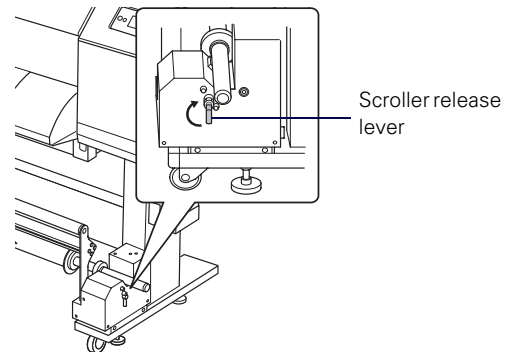
Cutting Off and Removing Prints

1. Make sure **READY** appears on the LCD display.
2. Press ▲ or ▼ to adjust the cutting position, if necessary. (When you are using the Auto Take-Up Reel, you cannot feed the media backward.)
3. Open the front cover.
4. Hold your print and pull slightly to remove any slack.
5. Using a razor blade or other cutting tool, cut off your print along the cutting groove



WARNING: Do not place your fingers in the path of the cutting tool to avoid injuring yourself.

6. If you are using the Auto Take-Up Reel, the scroller rotates to take up your printed media. To stop media take-up, set the switch on the top of the reel controller to **OFF**.
7. Flip the scroller release lever up to the **FREE** position.
8. Lift the entire scroller bar off of the printer, remove the paper holders from one end, then remove the media and core from the scroller bar.
9. Place an empty take-up core onto the scroller bar. Then replace the scroller bar, set the scroller release lever to the **SET** position, and turn the Auto Take-Up Reel back on.



Configuring Media

Pre-Printing Checklist

Whenever you print on a new media type, follow these guidelines to configure the media and print:

- Check the media packaging for print requirements.
- Select a paper configuration number (1 to 30) for the media. See the next section.
- Select these settings for the paper configuration using the information supplied with your media:

PRINT MODE

PAPER SUCTION

PRE HEATER

DRYING TIME

PLATEN HEATER

CARRIAGE MOVEMENT

POST HEATER

PRINT MULTIPLE LAYER

- Print a nozzle check pattern and clean the print heads, if necessary. See page 10.
- Perform a 500 mm Line Feed Adjustment **and** print a sample pattern. See page 9.
- Print a bidirectional alignment pattern and align the print heads. See page 10.
- Select the paper configuration number and print.

Make a note of the media type you set up for this media number on the back of this *Quick Reference Guide*.

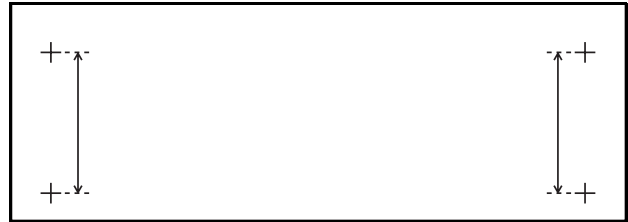
Creating Paper Configurations

1. Press **Menu**, press ▼ to highlight **PAPER SETUP**, and press **Menu**.
2. Press ▼ to highlight **PAPER SETUP** again, then press **Menu** again.
3. Select the paper configuration number (1 to 30) you want to use for this media type and press **Menu**.
4. Select the print settings for your media. See page 21 for details on the settings.
5. When done, press the ■■ Pause button.

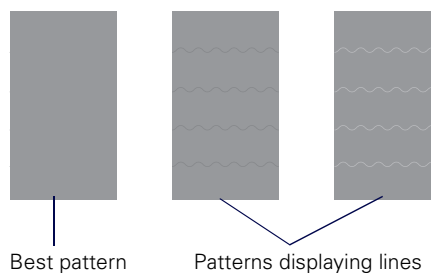
Adjusting the Paper Feeding Position

1. Press **Menu**, press **▼** to highlight **PAPER SETUP**, and press **Menu**.
2. Press **▼** to highlight **PAPER SETUP**, then press **Menu**.
3. Select the paper configuration number (1 to 30) for the loaded media, then press **↵**.
4. Select **PAPER FEED ADJUST**, press **Menu**, select **LINE FEED ADJUST**, and press **Menu** again.

5. Press **▲** or **▼** to set the feed length to 500mm (recommended), press **Menu**, and press **↵** to print an initial adjustment pattern like this:



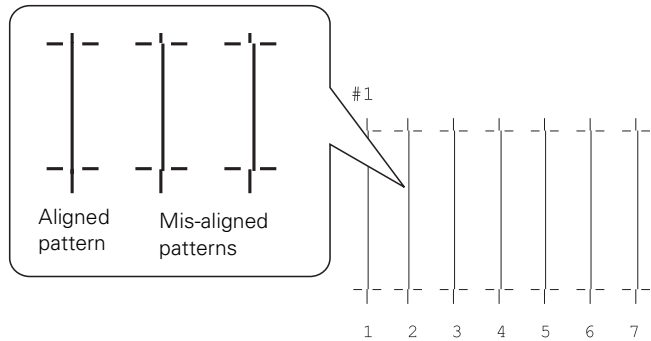
6. Cut off the printed pattern so you can more easily measure it. See page 7 for instructions.
7. Using a ruler with measurements in millimeters, measure the distance between the two + (plus) signs.
8. Press **▲** or **▼** to select the distance you measured, then press the **↵** button.
9. Press **▲** to return to the Paper Feed Adjust menu.
10. Select **PRINT SAMPLE PATTERN**, press **Menu**, and press the **↵** button to print sample patterns.
11. Cut off the printed patterns so you can more easily examine them. See page 7 for instructions.
12. Examine the sets of patterns to identify which one has the most consistent printing pattern, with no black or white lines running through it.



13. Press **▲** or **▼** to select the number of the best pattern, then press the **↵** button to save the setting.
14. When done, press the **⏸** Pause button.

Aligning the Print Head

1. Press **Menu**, press ▼ to highlight **PAPER SETUP**, and press **Menu**.
2. Press ▼ to highlight **PAPER SETUP**, then press **Menu**.
3. Select the paper configuration number for the loaded media, then press ↵.
4. **HEAD ALIGNMENT** is highlighted. Press **Menu**.
5. **BI-D ALL** is highlighted. Press ↵ to print the alignment patterns.
6. Determine which pattern in each set has the smallest gaps in the lines. Press ▲ or ▼ to select the number, then press ↵.
7. Repeat step 6 for the rest of the pattern sets, then press the **Pause** button to exit.

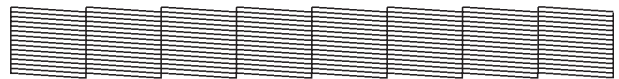


Checking and Cleaning the Print Heads

If your prints show a color shift or horizontal lines, check the print head nozzles for clogs or deflections. If necessary, run a cleaning cycle.

Note: You can set the printer to automatically check the nozzles periodically or before each print job using one of the **PRINT NOZZLE PATTERN** options on the **PRINTER SETUP** menu. You can also run different head cleaning levels and set up automatic cleaning cycles. See page 19 for instructions.

1. Press **Menu**, press ▼ to highlight **TEST PRINT**, and press **Menu** again.
2. Select **NOZZLE CHECK**, press **Menu**, and press ↵ to print a nozzle check pattern.
3. Examine the printed pattern to determine if the print heads need cleaning.
4. If you need to clean the print heads, press and hold the **Menu** button for three seconds.



Cleaning not needed



Clean the print heads

You may also want to align the print heads; see the previous section for instructions.

Maintaining the Printer

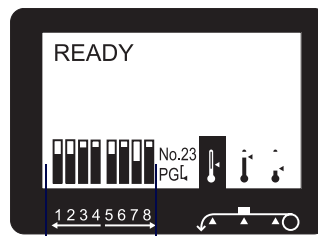
You should regularly check the ink status (see below) and replace cartridges (see page 12) as necessary.

Periodically, you also must perform the following maintenance procedures:

- **Dispose of waste ink**
(as needed); see page 13
- **Clean the cleaning wiper and print head casing**
(once a month or more often, as needed); see page 14
- **Replace the ink flushing pad**
(once a year or more often, as needed); see page 16
- **Wash the ink system**
(as needed); see page 17

Checking Ink Status

The easiest way to check ink levels is from the control panel LCD display. The numbers below the ink icons correspond to the ink cartridge slots on the printer.



Ink gauges for 8 cartridges

The icons indicate the ink remaining as follows:

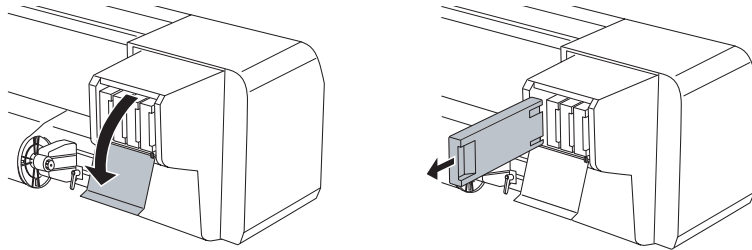
Icon	Description
■ or ■	Plenty of ink is available
■ or ■ or ■	Ink is getting low; make sure you have a new cartridge
Flashing ■	Ink is low (example shows the yellow cartridge)
■	Ink is expended (example shows the yellow cartridge)
■	Cartridge error or no cartridge

Replacing Ink Cartridges

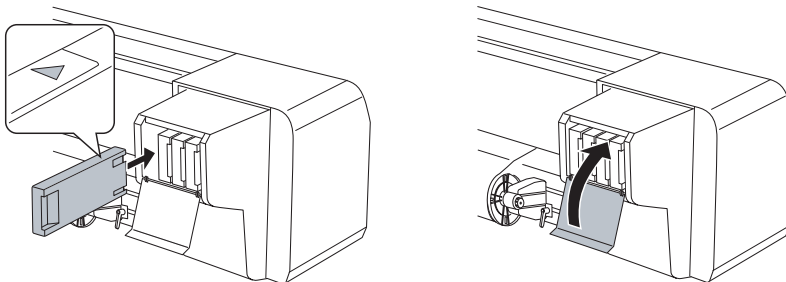
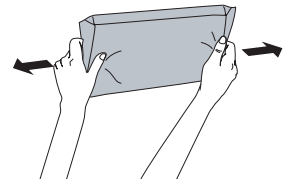
Use the following Epson UltraChrome® GS ink cartridges (see page 23 for ordering information):

Slot no.	Cartridge	Part number
1	Orange	T624800
2	Green	T624700
3	Light Magenta	T624600
4	Light Cyan	T624500
5	Black	T624100
6	Yellow	T624400
7	Magenta	T624300
8	Cyan	T624200

1. Open the ink compartment cover and remove the low or expended ink cartridge.



2. Vigorously shake the new cartridge in its package for five seconds, then unpack it.
3. Hold the cartridge with the arrow pointing toward the printer and insert it into the slot. (Don't force it in.) Then close the ink compartment cover.



Disposing of Waste Ink

You need to dispose of waste ink that collects in the waste ink tank beneath the printer when:

- The waste ink tank is more than half full
- The **DRAIN TANK FULL** message appears on the LCD display

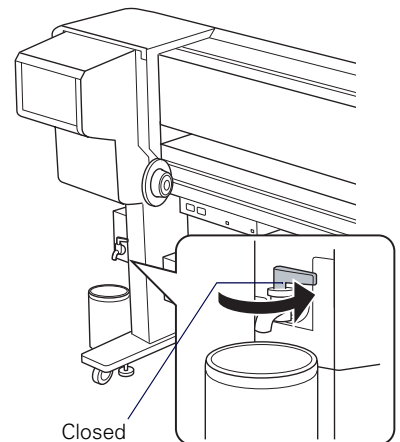
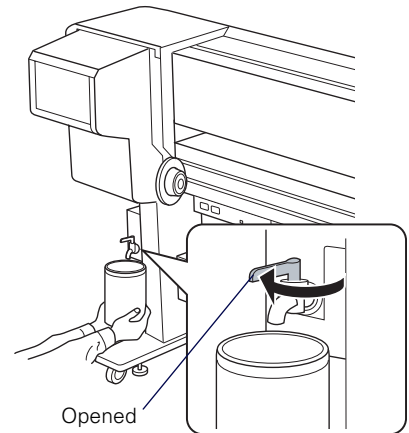
Before you dispose of waste ink, gather the following supplies:

- An empty 2 liter polypropylene or high-density polyethylene bottle with a cap (or optional Epson waste ink bottle, part number CBOTTLE; one was included with your printer)
- A cloth for wiping the waste ink tank spigot

WARNING: Before handling the waste ink, read the Material Safety Data Sheet (MSDS) for your printer. You can download it from Epson's support website at epson.com/support (U.S.) or epson.ca/support (Canada).

The waste ink from the printer is industrial waste. Proper waste ink disposal in compliance with the industrial waste disposal laws and ordinances of your local government is required. Consign disposal of waste inks to an industrial waste disposer. Please provide the Waste Ink Data Sheet to the industrial waste disposer. You can download it from Epson's support website at epson.com/support (U.S.) or epson.ca/support (Canada).

1. Hold the empty container beneath the waste ink tank spigot, then turn the valve to drain the waste ink.
2. When all the waste ink has drained, close the valve on the spigot.
3. Wipe the mouth of the spigot on the waste ink tank with a cloth.
4. Dispose of the waste ink and the cloth in compliance with industrial waste disposal laws and local government ordinances as required in your area.

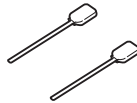


Cleaning the Cleaning Wiper, Capping Assemblies, and Print Head Casings

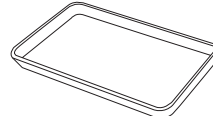
Clean the print head cleaning wiper, capping assemblies, and print head casings at least once a month. You may need to clean them more often if you notice blurred ink or gaps in your prints after cleaning the print head. Use the plastic gloves and cleaning swabs that came in the Maintenance Kit, and the metal tray included with your printer.



Plastic gloves



Cleaning swabs

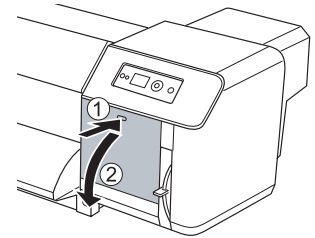


Metal tray

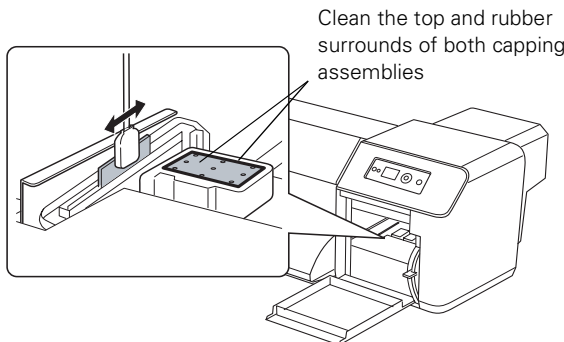
Note: If you need more swabs, purchase an Additional Printer Maintenance Kit (1 year supply). See the page 23 for ordering information.

Caution: You must complete this cleaning process within 15 minutes to prevent the print head from drying out.

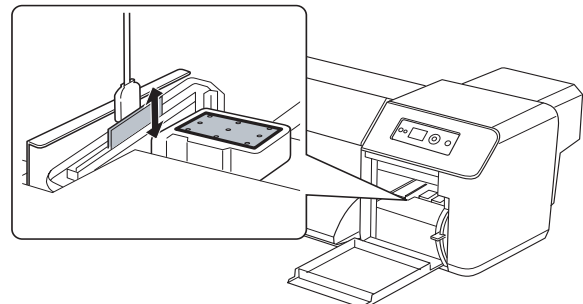
1. Press **Menu**, press ▼ to highlight **MAINTENANCE**, then press **Menu** again.
2. Press ▼ to highlight **CARRIAGE MAINTENANCE**, press **Menu**, then press ↵. **OPEN MAINT COVERS** appears on the LCD display.
3. To clean the cleaning wiper and capping assemblies, open the right maintenance cover.
4. Put on a plastic glove, then use a cleaning swab to clean ink and dust from both sides of the cleaning wiper. Wipe back and forth on the outside surface, and up and down on the inside surface.



Also clean excess ink from the top of the capping assemblies and their surrounds.



Wipe back and forth on the outside surface



Wipe up and down on the inside surface

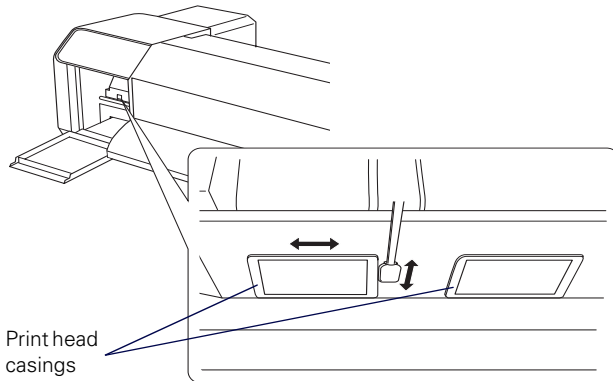
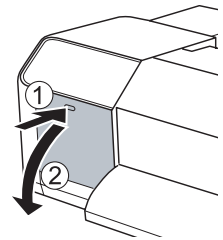
Caution: Do not touch the cleaning wiper or any other internal part with your hands to prevent oil from your skin interfering with head cleaning operations. Do not moisten the cleaning swab with water or it may damage the print head. Do not let the cleaning swab touch any other part of the printer or it may stain it with ink. Do not reuse a cleaning swab; dirt or ink from the swab may damage the print head.

5. If ink has hardened on the cleaning wiper and/or capping assemblies, and cannot be removed, you need to clean it using the optional Print Head Cleaning Kit, which includes special cleaning fluid and a cup. See page 23 for ordering information and the *Setup and Use Guide* for instructions.

6. Close the right maintenance cover.

7. To clean the print head casings, open the left maintenance cover. You may want to place the metal tray in the maintenance bay to help you view the print head casings in its reflection.

8. Use a flashlight to check if there is any dust or ink on the casings surrounding the print heads. Then put on a plastic glove and use a cleaning swab to clean **around** the print head casings as shown.



Caution: Do not touch the print heads or the tip of the swab with your hands to prevent oil on your skin from damaging the print heads. Do not moisten the cleaning swab with water or it may damage the print head. Do not let the cleaning swab touch any other part of the printer or it may stain it with ink. Do not reuse a cleaning swab; dirt or ink from the swab may damage the print head.

9. If ink has hardened on the print head casings and cannot be removed, you need to clean them using the optional Print Head Cleaning Kit. See page 23 for ordering information and the *Setup and Use Guide* for instructions.

10. Close the left maintenance cover. (You can leave the metal tray in the maintenance bay.)

11. Press the **|||** Pause button to return the printer to the **READY** state.

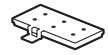
12. Dispose of the used gloves, swabs, and ink cleaner (if used) in compliance with industrial waste disposal laws and local government ordinances as required in your area.

Replacing the Ink Flushing Pad

Once a year, you need to replace the printer's flushing pad. You may need to replace it sooner if you notice ink smears on your media or if the pad becomes damaged or excessively soiled. Use the replacement flushing pad and plastic gloves that came in the Maintenance Kit.



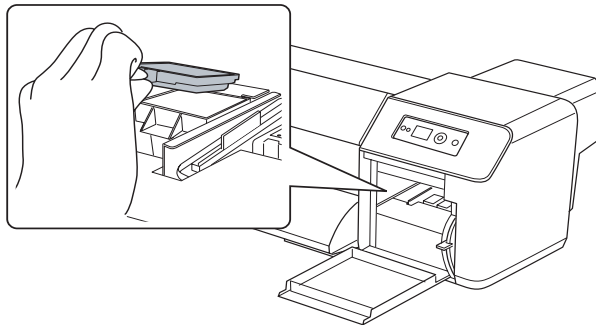
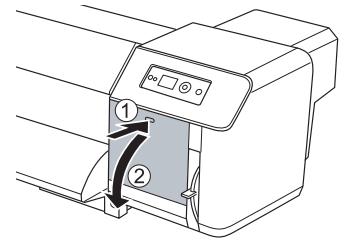
Plastic gloves



Flushing pad

Note: If you need more flushing pads, purchase an Additional Printer Maintenance Kit (1 year supply). See page 23 for ordering information.

1. Press **Menu**, press ▼ to highlight **MAINTENANCE**, then press **Menu** again.
2. Press ▼ to highlight **CARRIAGE MAINTENANCE**, press **Menu**, then press ↵. **OPEN MAINT COVERS** appears on the LCD display.
3. Open the right maintenance cover.
4. Put on a plastic glove and remove the flushing pad by grasping its tab.



Caution: Hold the flushing pad upright and level as you remove it to prevent ink from spilling. Be careful not to let ink spill onto any part of the printer.

5. Install the new flushing pad with the tab facing forward, and press it down until it clicks into place.
6. Close the right maintenance cover.
7. Press the **Pause** button.
8. Dispose of the used flushing pad and gloves in compliance with industrial waste disposal laws and local government ordinances as required in your area.

Washing the Ink System

If you still have print quality problems after cleaning the print head using the heaviest level of cleaning cycle, you can wash the ink system to clear the clogged nozzles.

Washing the ink system involves the following procedures:

- Removing the ink cartridges
- Emptying the waste ink tank
- Inserting the cleaning cartridges
- Emptying the waste ink tank again
- Removing the cleaning cartridges
- Emptying the waste ink tank again
- Installing ink cartridges and charging the ink system

Caution: Washing the ink system takes around 33 minutes.



Before you wash the ink system, gather the following supplies:

- Empty 2 liter polypropylene or high-density polyethylene bottles with caps to hold the drained waste ink (you can use an optional Epson waste ink bottle, part number CBOTTLE; one was included with your printer)
 - A cloth for wiping the waste ink tank spigot
 - A set of Additional Cleaning Cartridges from Epson; see page 23 for ordering information
 - A set of new ink cartridges or used cartridges with plenty of ink left in them
1. Press **Menu**, press ▼ to highlight **MAINTENANCE**, then press **Menu** again.
 2. Press ▼ to highlight **HEAD WASHING**, then press **Menu**.
 3. Carefully follow all the instructions as they appear on the LCD display.

For detailed instructions on the individual procedures, see the instructions for them in this guide.

Caution: Carefully follow all the instructions on the LCD display to avoid errors. If you see a **DRAIN TANK FULL** error, empty the waste ink tank; see page 13. If you see a **COVER OPEN** error, close the indicated cover.

Control Panel Lights

Light	Description
⏻ Power	On: printer is turned on Flashing: printer is processing or printing a print job, performing a cleaning operation, warming up, or shutting down Off: printer is turned off
⏸ Pause	On: printer is paused or in menu mode
Check  paper	On: no media is loaded, media is out, or the paper lever is in the Released position Flashing: media is jammed, almost out, loaded crooked, or there is another error condition
Check  ink	On: an ink cartridge is expended, not installed, or not compatible with the printer Flashing: an ink cartridge is nearly expended
High Heat	See the next two tables for descriptions
Low Heat	
Error alert lamp	Flashing: an error has occurred

Status of High Heat and Low Heat lights when the printer is in a **READY** or **WARMING UP** state:

High Heat light	Low Heat light	Description
On	On	All three heaters have reached their preset temperature
Flashing	Off	At least one of the heaters is warming up to its preset temperature
Flashing	Flashing	A heater error has occurred
Off	Off	All three heaters are turned off

Status of High Heat and Low Heat lights when selecting a preset temperature for a heater (currently selected heater type is indicated on the control panel):

High Heat light	Low Heat light	Description
On	On	You can select a higher or lower temperature than the current setting
On	Off	You can select only a higher temperature than the current setting
Off	On	You can select only a lower temperature than the current setting

Control Panel Menus

Press the **Menu** button to enter menu mode and select the settings summarized here.

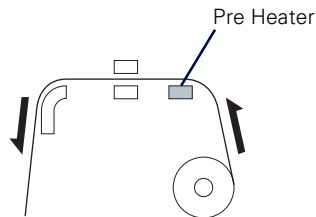
Menu	Item	Settings
PRINTER SETUP	SIDE MARGIN	0.20inch to 1.00inch (5mm to 25mm)
	PAPER SIZE CHECK	ON, OFF
	PAPER SKEW CHECK	ON, OFF
	PRINT NOZZLE PATTERN	OFF, ON: EVERY PAGE, ON: EVERY 10 PAGES
	HEATING TIME	OFF, 10min to 240min
	FLUSH ONTO PAPER	YES, NO
	FLUSHING FREQUENCY	5PASS, 1PASS to 999PASS
	PAPER ORIGIN SETUP	0.00inch to 32.00inch (0mm to 800mm)
	AUTO TAKE-UP REEL	ON, OFF
	HEAD FAN	ON, OFF
	REGULAR CLEANING	OFF, 1h to 6h, 9h, 12h, 18h, 24h
	INITIALIZE SETTINGS	Resets PRINTER SETUP menu settings to their default values
PAPER SETUP (see "Paper Setup Option Summary" on page 21)	PAPER TYPE	Media type loaded in the printer
	PAPER SETUP	STANDARD, 1 to 30
MAINTENANCE	CLEANING (VERY LIGHT)	Starts a very light print head cleaning cycle
	CLEANING (LIGHT)	Starts a standard print head cleaning cycle
	CLEANING (MEDIUM)	Starts a strong print head cleaning cycle
	CLEANING (HEAVY)	Starts the strongest print head cleaning cycle
	HEAD WASHING	Starts the print head washing cycle
	CARRIAGE MAINTENANCE	Moves the print head to the maintenance position
	CLOCK SETTING	Sets the printer date and time settings
	CONTRAST ADJUSTMENT	Adjusts the contrast of the LCD display

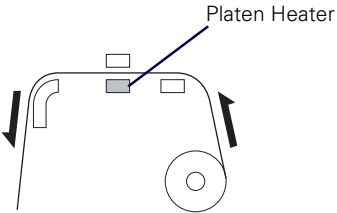
Menu	Item	Settings
TEST PRINT	NOZZLE CHECK	Prints a nozzle check pattern, firmware version and ink usage count
	STATUS SHEET	Prints a sheet showing status of various printer parts and selected settings
	NETWORK STATUS SHEET	Prints a sheet showing the network settings
	JOB INFORMATION	Prints a sheet showing information about the last 10 print jobs
	CUSTOM PAPER	Prints information about paper configurations
PRINTER STATUS	VERSION	Displays the printer's firmware version number
	PRINTABLE PAGES	Displays an estimate of the number of pages that can be printed based on the ink cartridge status
	INK LEVEL	Displays the status of the ink in the cartridges
	USAGE COUNT	Displays the approximate amount of ink and media used
	CLEAR USAGE COUNT	Clears the values displayed in USAGE COUNT
	JOB HISTORY	Displays the approximate amount of ink and media used in the last 10 print jobs
	TOTAL PRINTS	Displays the total number of pages printed
	EDM STATUS	Displays EDM system status, and date and time of last upload; see www.mypersonprinter.com for more information
NETWORK SETUP	NETWORK SETUP	ENABLE, DISABLE
	IP ADDRESS SETTING	AUTO, PANEL
	IP, SM, DG SETTING	IP address, subnet mask, default gateway
	BONJOUR	ON, OFF
	INIT NETWORK SETTING	Resets network settings to their default values

Paper Setup Option Summary

In the PAPER SETUP menu, select your paper configuration number, then select these options for that media type:

Option	Parameters	Description
PRINT MODE	MAX QUALITY	For photo printing with priority on print quality
	QUALITY1	For photo printing balancing print quality and efficiency
	QUALITY2	For photo printing with priority on efficiency
	QUALITY3	For graphic printing with standard print quality
	SPEED1	For faster printing of text or graphics with priority on print quality
	SPEED2	For faster printing of text or graphics balancing print quality and efficiency
	SPEED3	For faster printing of text or graphics with priority on efficiency
PAPER FEED ADJUST	LINE FEED ADJUST	Adjusts the amount of media fed during printing to help eliminate banding; see page 9 for instructions
	PRINT SAMPLE PATTERN	
HEAD ALIGNMENT	BI-D ALL	Aligns the print head; see page 10 for instructions
PRE HEATER	OFF	Sets the temperature of the heater that heats the media before printing; see your media instructions
	30°C to 50°C (86 °F to 122 °F)	



Option	Parameters	Description	
PLATEN HEATER	OFF	Sets the temperature of the heater beneath the print head that warms the ink; see your media instructions	
	30°C to 50°C (86 °F to 122 °F)		
	POST HEATER	OFF	Sets the temperature of the heater that dries the printout; see your media instructions
		30°C to 50°C (86 °F to 122 °F)	
M/W ADJUSTMENT (MicroWeave®)	LOW A to B	Minimizes the affect of the MicroWeave adjustment	
	MEDIUM A to D	Prints areas between print head passes with a wave form pattern	
	HIGH A to D	Prints like MEDIUM, but slower to improve print quality	
	EXTRA HIGH A to B	Prints like HIGH, but only on half of the print head nozzles	
PAPER SUCTION	HIGH	Adjusts the suction pressure used when feeding the media; see your media instructions	
	LOW		
DRYING TIME	0.0sec to 10.0sec	Selects a drying time for ink to avoid smearing	
CARRIAGE MOVEMENT	DATA WIDTH	Moves the print head to the width of the print data	
	PRINTER FULL WIDTH	Moves the print head to the maximum width	
PRINT MULTIPLE LAYER	OFF	Sets printing to overwrite lines a select number of times (also called "multiple hit")	
	2 to 8		

Ordering Supplies

Part	Part number
Ink Cartridges	See page 12 for a complete list
Additional Printer Maintenance Kit (one-year supply)	C12C890611
Additional Cleaning Cartridges (8 cartridges)	T623900
Print Head Cleaning Kit (used for periodic cleaning)	C12C890621
Additional Waste Ink Bottle	CBOTTLE
Additional 64-inch Wide Media Take-up Core	C64CORE

You can purchase optional equipment and genuine Epson ink and media from an Epson Professional Imaging Authorized Reseller. To find the nearest reseller, visit www.proimaging.epson.com (U.S. sales), www.epson.ca (Canadian sales), or call 800-GO-EPSON (800-463-7766). Or you can purchase online at www.proimaging.epson.com (U.S. sales) or www.epson.ca (Canadian sales).

Where to Get Help

Epson provides technical support and information on the installation, configuration, and operation of professional printing products through the Epson PreferredSM Limited Warranty Plan.

Dial (888) 377-6611, 6 AM to 6 PM, Pacific Time, Monday through Friday. Days and hours of support are subject to change without notice.

Before you call, make sure you have your:

- Unit ID number: _____
(included with the Epson Preferred Limited Warranty Plan information that came with your printer)
- Your printer serial number: _____
- Proof of purchase and date: _____

Tip: If you experience difficulty with the toll-free line or your Unit ID number, call (562) 276-1305.

Visit Epson's support website at epson.com/support (U.S.) or epson.ca/support (Canada) and select your product for solutions to common problems. You can download drivers, firmware, and documentation, get FAQs and troubleshooting advice, or e-mail Epson with your questions.



Epson and Epson Stylus are registered trademarks, and Epson Exceed Your Vision is a registered logomark of Seiko Epson Corporation.

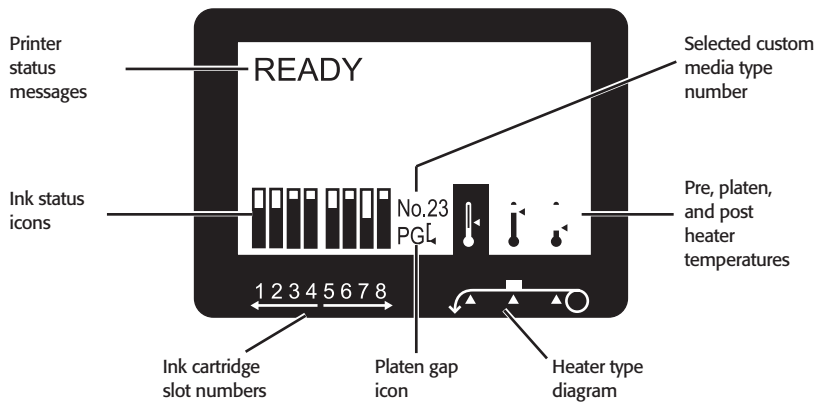
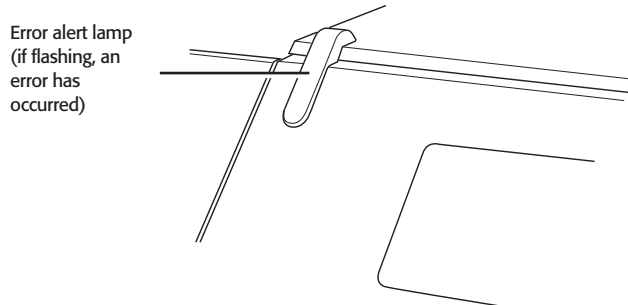
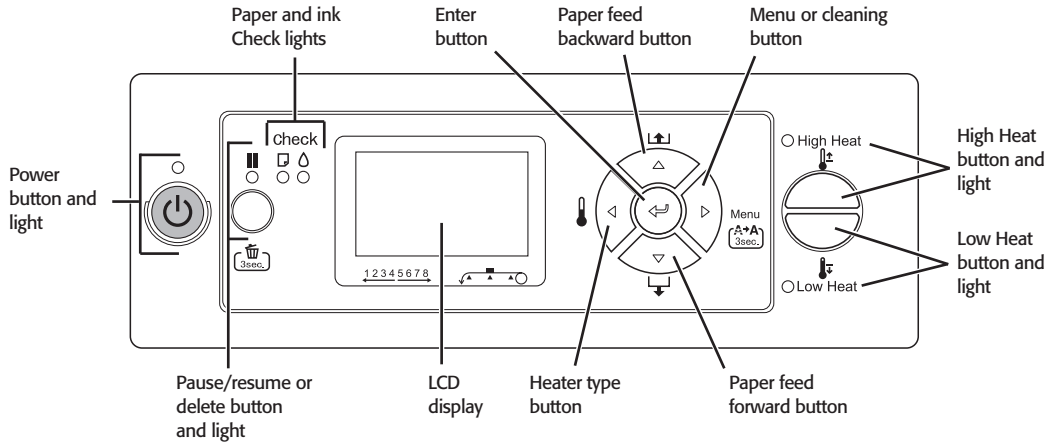
Epson Preferred is a service mark of Epson America, Inc.

Media Configuration Log

Media number	Media type/Name	Notes
1		
2		
3		
4		
5		
6		
7		
8		
9		
10		
11		
12		
13		
14		
15		
16		
17		
18		
19		
20		
21		
22		
23		
24		
25		
26		
27		
28		
29		
30		

Write using ballpoint pen only.

Control Panel and LCD Display



Printer Parts

