



Philips
Headphones with mic

40mm drivers/closed-back

On-ear
Memory foam cushions
Single-sided flat cable



SHL5605BK



Clear, natural sound immersion

with MusicSeal to keep your music yours

Inspired by New York and its smart-casual street style, the CitiScape Downtown SHL5605BK/10 Headphones keep it real with ease. MusicSeal keeps your music to yourself, while light spring-steel with soft foam cushions ensure perfect comfort.

Total immersion

- Finely tuned 40mm drivers deliver clear and natural sound
- MusicSeal keeps your music in and all to yourself
- On-ear isolating cushions block out the city's noise

Supreme comfort

- Soft fabric headband for comfortable listening on the move
- Flat 1.2m anti-tangle cable keeps you kink- and knot-free
- Memory foam cushions keep you comfortably immersed in music

Music and calls

- Switch from music to phone calls with built-in microphone

PHILIPS

Headphones with mic
40mm drivers/closed-back On-ear, Memory foam cushions, Single-sided flat cable

SHL5605BK/10

Highlights

Built-in microphone



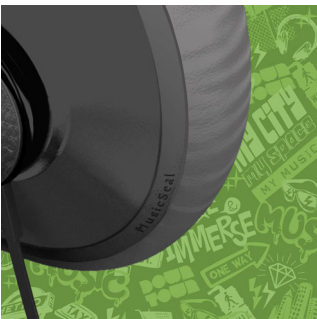
Your CitiScape headphones feature a built-in microphone so you can easily switch from listening to music to taking phone calls. It's a breeze staying connected with your music – and with the people who matter most to you.

Clear and natural sound



Immerse in crystal clear sound infused with natural warmth, thanks to finely tuned 40mm drivers. Backed by Philips' heritage in sound excellence, your CitiScape headphones are carefully engineered to reproduce clean, detailed yet natural sound for truly captivating music enjoyment on the move.

MusicSeal



Whether you're listening to the gnashing guitar riffs of a funk metal band or the lilting soprano

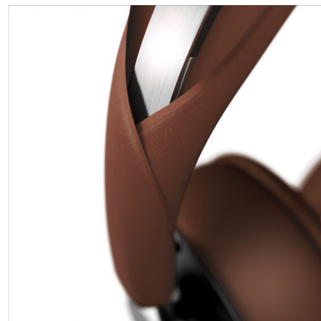
of an opera diva, MusicSeal ensures that your CitiScape headphones lets you keep your favorite music all to yourself. With double layered walls within the earshell and secure edges between the headphone cushions and housing, this innovative feature seals in every beat. At the same time, ambient noise is prevented from seeping through and disrupting your music enjoyment.

On-ear isolating cushions



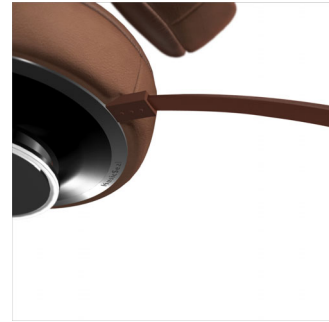
Be part of the city's buzz but not its noise with on-ear sound isolating cushions. The incredibly soft ear cushions enclose the speakers around your ears for long-lasting wearing comfort. You will be able to clearly discern and enjoy all the sound details in your favorite music.

Soft fabric headband



Soft fabric headband for comfortable listening on the move

Flat anti-tangle cable



Say goodbye to wrestling with knotted and messy cables in and out of your bag. Your CitiScape headphones' flat 1.2m anti-tangle cable stays kink- and knot-free – always. Now you can focus on what matters most, like enjoying your music with ease wherever you go.

Soft memory foam cushions



Ultra-soft and supple memory foam cushions of these Philips headphones hug the contours of your ears comfortably and securely to form a perfect seal. Not only is it designed to ensure the best possible fit – whatever your head shape, it also lets you immerse in music enjoyment for extended periods of time. In fact, it is so comfortable, you may even forget that you have them on.

Specifications

Sound

- Acoustic system: Closed
- Magnet type: Neodymium
- Voice coil: CCAW
- Diaphragm: Mylar dome
- Frequency response: 18 - 22 000 Hz
- Impedance: 32 Ohm
- Maximum power input: 30 mW
- Sensitivity: 102 dB
- Speaker diameter: 40 mm
- Type: Dynamic

Connectivity

- Cable Connection: Two-parallel, symmetric
- Cable length: 1.2 m
- Connector: 3.5 mm stereo
- Finishing of connector: 24k Gold plated
- Type of cable: OFC
- Compatible with: iPhone®, BlackBerry®, HTC, LG, MOTOROLA, Nokia, Palm®, SAMSUNG, Sony Ericsson

Packaging dimensions

- Number of products included: 1
- EAN: 69 23410 71327 5
- Packaging dimensions (W x H x D):
17 x 20 x 8 cm
- Gross weight: 0,398 kg
- Nett weight: 0,174 kg
- Tare weight: 0,224 kg
- Packaging type: Dummy
- Type of shelf placement: Dummy

Outer Carton

- Number of consumer packagings: 3
- Gross weight: 1,39 kg
- Outer carton (L x W x H): 26,5 x 21,5 x 24 cm
- Nett weight: 0,522 kg
- Tare weight: 0,868 kg
- GTIN: 1 69 23410 71327 2

Product dimensions

- Product dimensions (W x H x D):
17,5 x 18,5 x 7,5 cm
- Weight: 0,174 kg



Issue date 2015-01-17

Version: 4.6.7

12 NC: 8670 000 85524
EAN: 69 23410 71327 5

© 2015 Koninklijke Philips N.V.
All Rights reserved.

Specifications are subject to change without notice.
Trademarks are the property of Koninklijke Philips N.V.
or their respective owners.

www.philips.com