

## SERVICE INFORMATION BULLETIN

**Subject:**

**SURGE WHILE DRIVING DURING AUTO REGENERATION**

This bulletin provides a procedure to modify the Intake Throttle Valve.

**1. RELEVANT MODELS:**

2008-2010 North American Production Vehicles equipped with the J08E engine.

**2. SYMPTOM / CONDITION:**

Some 2008-2010 North American Production vehicles may exhibit a bucking or a surge condition under heavy engine load or during DPR auto-regeneration. In some cases the condition will be accompanied by a P0400 and or a P2101 DTC. In the past it was necessary to replace the Intake Throttle Valve for this condition. The following service procedure will resolve the condition without replacing the Intake Throttle Valve assembly.

**3. PARTS REQUIRED:**

Part Number	Description	Quantity
S171712310	Gasket	1

**4. PROCEDURE:**

***BEFORE YOU BEGIN***

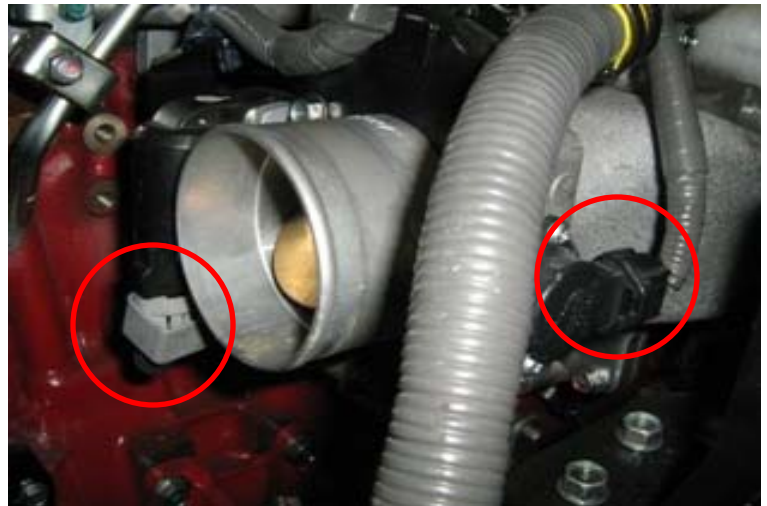
- Read and understand all instructions and procedures before you begin the work
- Read and follow all **WARNINGS** set forth below
- These alerts help to avoid damage to components, serious personal injury, or both
- Park the vehicle on a level and solid surface
- Apply the parking brake and confirm parking brake activation
- Place wheel chocks in front of and behind all wheels
- Use care when working around surfaces which may be hot
- Wear safety glasses to prevent eye injuries
- Properly calibrated torque wrenches must be used to prevent possible ensuing damage
- Refer to any applicable Material Safety Data Sheet (M.S.D.S.) for additional information

## SERVICE INFORMATION BULLETIN

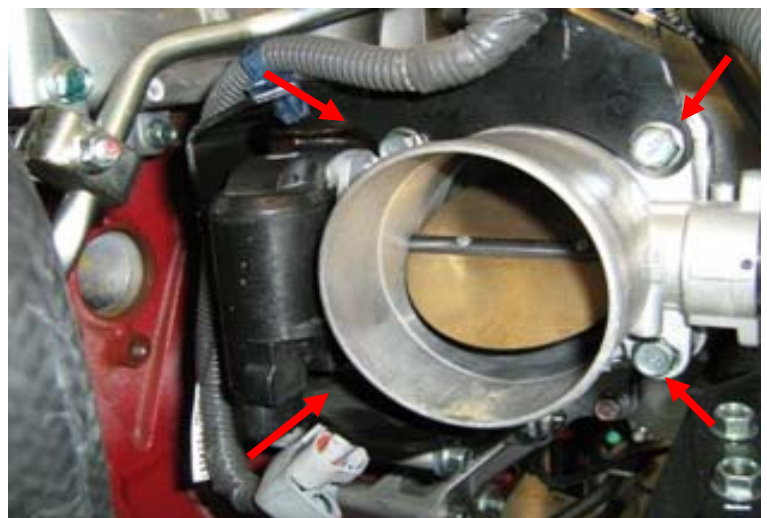
- a) Remove two clamps and remove Charge Air Cooler Outlet Hose. Cover the Charge Air Cooler outlet to prevent dirt from entering.



- b) Disconnect both Intake Throttle Valve electrical connectors.



- c) Remove four Intake Throttle Valve mounting bolts.



## SERVICE INFORMATION BULLETIN

- d) Remove the Intake Throttle Valve from the vehicle. Cover the Intake Manifold opening to prevent dirt from entering Intake Manifold. Check and wiggle the throttle blade. If any movement is detected between the throttle blade and throttle shaft the Throttle Valve assembly must be replaced.



**DO NOT ATTEMPT TO TIGHTEN THE SCREWS**

- e) Refer to diagram # 2 on page 6 to correctly locate hole placement. Insert a shop rag on both sides of the throttle blade stops as shown in diagram # 1 on page 6. Center punch the three holes to locate the correct location.



- f) Drill three 3mm holes in throttle blade at the previously marked locations.



**NOTE: Each Hole Size Must Be 3.0 mm**



## SERVICE INFORMATION BULLETIN

- g) Remove all burrs from the throttle plate surface and clean all metal shavings from Intake Throttle Valve with compressed air before reassembly.



- h) Using the new gasket reinstall the Intake Throttle Valve on the vehicle, hand tighten the four bolts.



- i) Torque the four Intake Throttle Valve bolts to their specified torque.



**NOTE:**  
Specified Torque 21 lb. ft. (28,5 Nm)

## SERVICE INFORMATION BULLETIN

- j) Reconnect both Intake Throttle Valve electrical connectors.



- k) Reinstall Charge Air Cooler hose and tighten the two clamps to the specified torque.

**NOTE:**  
**Specified Torque 4.5 lb. ft. (6 Nm)**



## SERVICE INFORMATION BULLETIN

### DIAGRAMS

Diagram # 1: Intake Throttle Valve

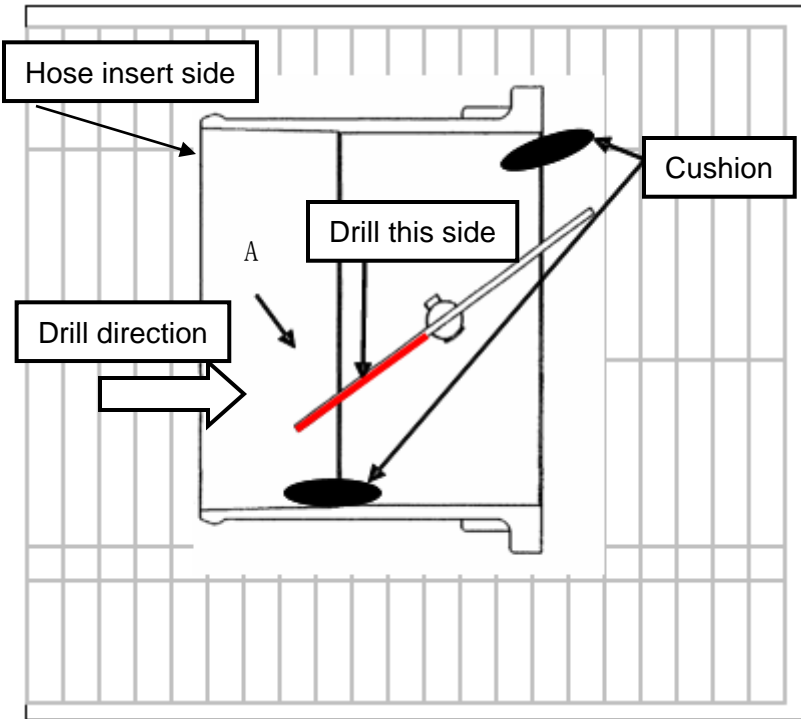
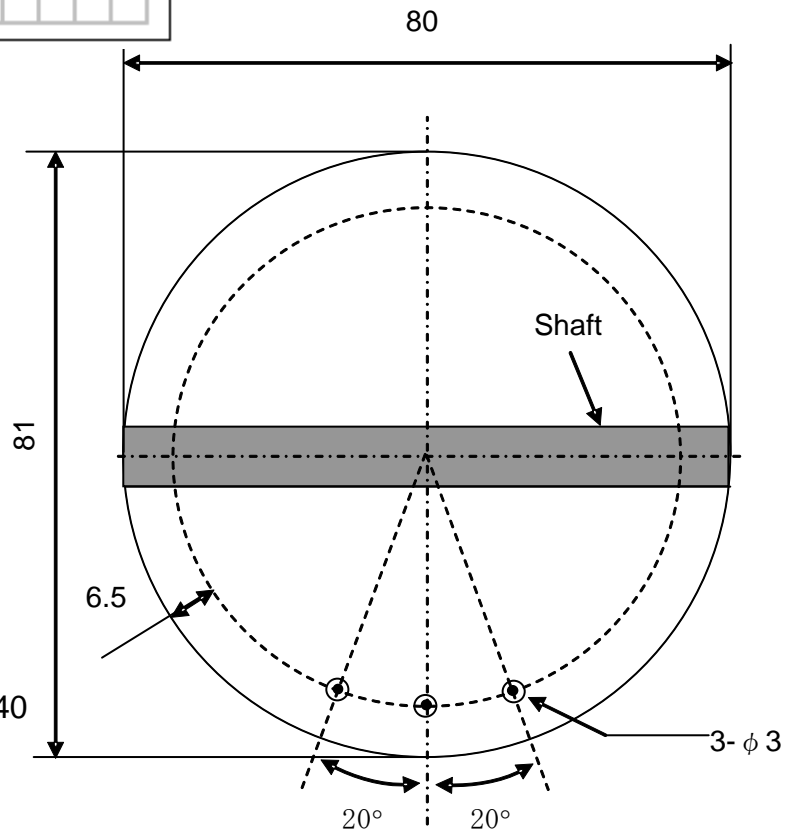


Diagram # 2: A-Section View



**NOTE: If within warranty coverage (2 years unlimited mileage) use the following claim information:**

#### 5. CLAIM INFORMATION:

- a) TSB No. 003-09
- b) Time Allowance: 0.5 hr / Unit
- c) Warranty code: 05171 T Code : 40
- d) Operation code: 05150AOT
- e) Original part No: 26100E0050