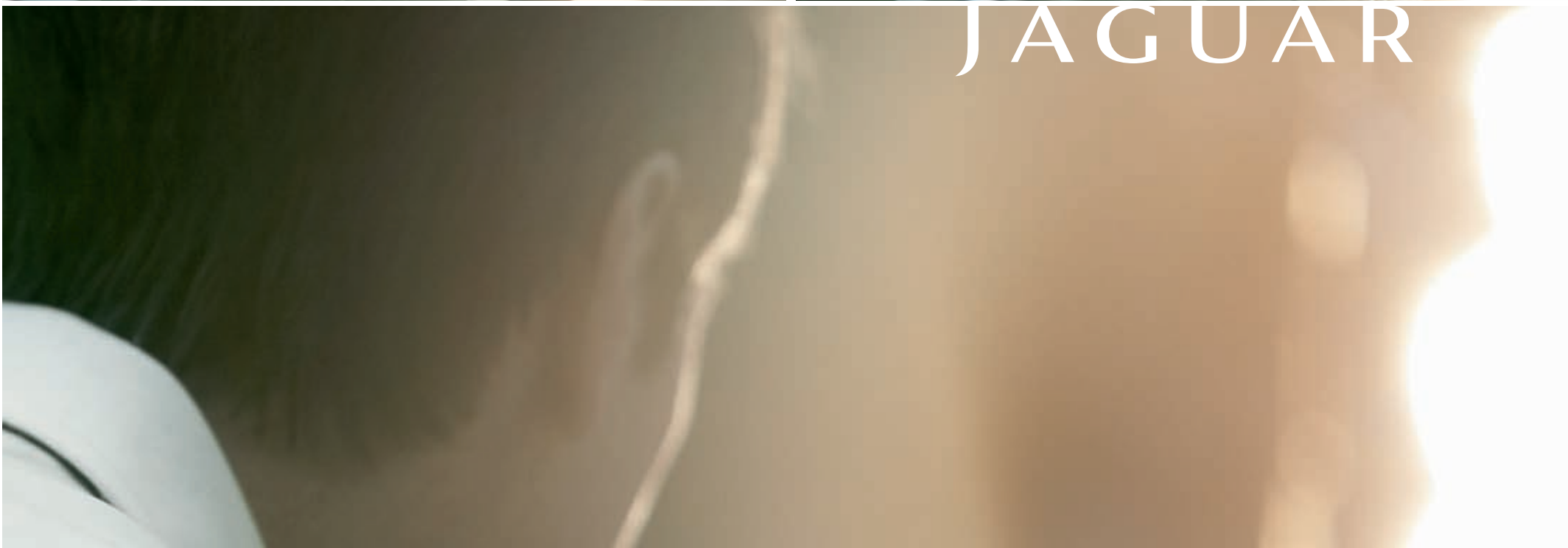


X-TYPE

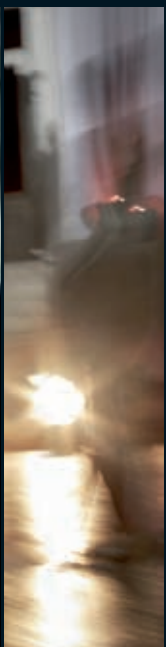
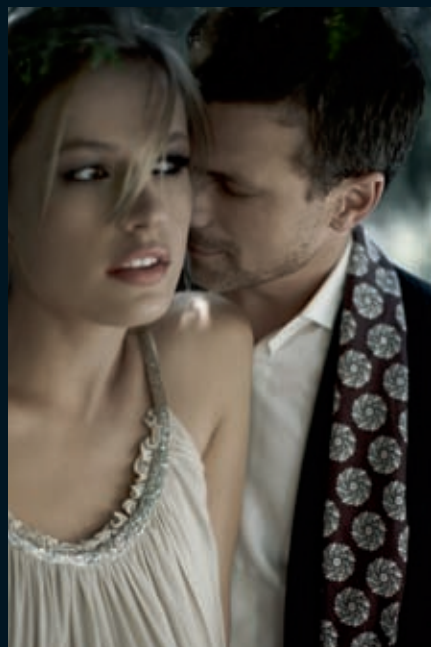


JAGUAR





JAGUAR



The X-TYPE 6-11. Engine choice 12-13. Driving experience 14-17.
Craftsmanship and versatility 18-23. TECHNOLOGY 24-27.
SAFETY 28-29. Choices and technical specification 30-47.
X-TYPE Accessories 48-51. Owning your X-TYPE 52-53.





The X-TYPE from JAGUAR.
A distinctive range of premium
saloons and elegant estates
newly redesigned to offer
more style and even more choice.

Every model focused on delivering an outstanding driving experience; quality and refinement as standard; luxury that can be enjoyed, every day. The new face is bold and contemporary, the lines and stance more sporting, the signature detailing unmistakable. X-TYPE perfectly balances performance with versatility, a dynamic character with great looks, luxury and practicality.













Power to suit purpose. PETROL OR DIESEL, manual or automatic. *A real choice.*

Newly expanded engine and transmission combinations mean an even broader X-TYPE range. Refined common rail diesels, or a powerful 24-VALVE V6 PETROL ENGINE; 5 and 6-speed manual, automatic or one-touch sequential shift transmissions - there is an X-TYPE to match your needs and to exceed anything you might expect.

JAGUAR'S highly efficient turbocharged 2.0 LITRE DIESEL ENGINE is available with 5-speed manual transmission. It is quiet and responsive, delivers excellent fuel economy and, at 149g/km, has one of the lowest figures for CO₂ emissions in its class.

The 2.2 LITRE DIESEL is one of the most refined diesel engines in the world and now offers the choice of either 6-speed manual or the new 6-speed JAGUAR Sequential Shift™ automatic transmission. JAGUAR Sequential Shift™ has the dual capability of fully automatic or sequential manual gear selection - a combination that's smooth, flexible, economical and dynamic. It is specifically tuned to deliver sporting performance and relaxed cruising, and is unique to X-TYPE 2.2 LITRE DIESEL models. The 2.2 LITRE DIESEL ENGINE also features transient overboost - a few seconds at a time of increased turbo boost up to 400Nm of torque, for maximum overtaking punch whenever added performance is needed.

X-TYPE also offers JAGUAR'S high performance 231ps 3.0 LITRE V6 PETROL ENGINE, with standard automatic transmission.

It's a range with a huge breadth of abilities - but every choice is designed to combine performance with refinement for maximum driving pleasure.





The X-TYPE, a JAGUAR *with a fine sense of balance.*

Luxury demands refinement, and dynamic excellence means smooth comfort as well as sharp handling. Balance is everything. Balance and personal preference. The X-TYPE saloon or estate, can offer Touring or Sport suspension tunes, and two-wheel drive or JAGUAR Traction[®] full-time All Wheel Drive (AWD). Whichever you choose, the X-TYPE's body architecture, its powertrain

installations and the way it covers the road are all tuned to deliver the most satisfying JAGUAR driving experience. Responsive, sporting and driver-focussed. And, in diesel models, the X-TYPE's noise reduction technologies include tuned acoustic insulation and engine settings that fine tune three times every millisecond to preserve tranquillity and reduce vibration.







Being ahead is the *natural way* for the X-TYPE. Once again it opens *new horizons*, and all of it is underpinned by INTELLIGENTLY APPLIED TECHNOLOGY.

The X-TYPE has always been a leader - breaking new ground for JAGUAR with multiple first-time JAGUAR technologies. And the latest generation X-TYPES continue to use technology to achieve excellence.

To make their high-torque performance and driver-focussed dynamics safer, even when conditions say tread gently, two-wheel drive diesel models have a range of sophisticated driver aids. Traction Control, and Dynamic Stability Control (DSC) with Emergency Brake Assist (EBA) can provide better grip, more balanced handling and improved stopping power, even when the road turns slippery.

The new X-TYPE 2.2 LITRE DIESEL automatic brings the sporting touch of electronically-controlled JAGUAR Sequential Shift™ to the X-TYPE for the first time - to combine refinement with dynamic performance and fine economy.

The JAGUAR Sequential Shift™ transmission offers the choice of two fully automatic modes - Drive mode for seamless response and relaxed cruising, or Sport automatic mode with more aggressive shift points and a more sporting feel.

For maximum driver involvement, Sports manual mode allows one-touch control of six perfectly spread gears - the shift quality specifically tuned to match exceptional response with optimum performance. In Sports manual mode, sequential up- and down-shifts are controlled simply by pushing the shift lever forwards or backwards, and sophisticated electronic logic does the rest.

3.0 LITRE V6 PETROL ENGINE X-TYPES feature DSC and JAGUAR Traction® full-time All Wheel Drive (AWD) as standard. JAGUAR Traction® gives exceptional road-holding and handling, for greater driver control and reassurance. In normal conditions it distributes engine power 40% to the front wheels and 60% to the rear wheels. However, if a wheel starts to slip, such as in wet conditions or under hard acceleration, more power is directed to the front wheels until full traction is regained.



Craftsmanship is a JAGUAR given, *contemporary luxury* is an X-TYPE signature.

Luxury is standard with the X-TYPE - contemporary luxury founded on thoroughly modern craftsmanship, every stitch a JAGUAR but with a new palette to reflect its bolder new look.

New seat designs feature horizontal or diamond twin-needle stitch patterns. There is a choice of sophisticated new trim colours with subtle contrasts or distinctive piping, and the availability of the highest quality materials and detailing, including Softgrain leather and contrast stitching. Dependant upon model, the powered front seats offer up to 10-way adjustment, two-stage heating for driver and front passenger seats, and memory function for the driver's seat with three settings that also include the exterior mirrors.

There's the elegance of the chic new Rosewood or signature Burr Walnut real wood veneers, whilst Piano Black or stylish Carbon Fibre offer sporting alternatives. And the performance feel is enhanced by attention to detail. Within the instrument cluster, the redesigned dials have new surrounds with white pointer illumination inspired by the JAGUAR XK sports car range.











The X-TYPE isn't one car *but two*, saloon or estate.

A choice to support the way you live. The X-TYPE Estate has style, luxury performance and refinement, plus even more space and versatility. One of the most elegant estate cars in the world, its practicality makes it a natural choice for anyone with an active lifestyle.

Space, accessibility and flexibility are the keys. A massive 1415 litres of usable volume with no need to remove head restraints when lowering the 70/30 split-fold rear seats. The rear load space has secure, concealed storage compartments, including one large enough to hide a laptop and charge it on the move from the Estate's standard 12-volt auxiliary power socket. And to keep everything where it should be, there's a removable luggage cover, and chrome-finished luggage tie-downs.

Usability is everything. The X-TYPE Estate's tailgate glass opens independently, so bags of shopping, a briefcase or a backpack don't mean opening the whole door. For bulkier items, the main tailgate aperture is tall, broad and uncluttered. Full carpeting to the waistline protects both interior and luggage. And the tailgate can be unlocked by its own button on the remote key - which can even be programmed to open the glass only.

Then if you do overspill even that huge capacity, roof rails in black or optional silver, add another level of load-carrying, as well as another neat styling signature.



The best TECHNOLOGY improves our motoring lives. JAGUAR technology is technology with the simple touch – *literally*.

JAGUAR believes in technology with a purpose, technology that's easy to use. The X-TYPE has features to look after your comfort, entertainment, information and safety, but no complex controls or clutters of switches to distract from the road – just user-friendly logic and elegant simplicity.

Cruise control is fitted as standard along with hands-free Bluetooth® telephone connectivity, which includes the ability to pair up to five separate telephones. Both of these features, along with the audio entertainment system, can be operated using thumb wheels and buttons set into the steering wheel.

On SE, Sport Premium and Sovereign models many of the most frequently used controls can be accessed from the 7-inch full-colour Touch-screen in the centre of the instrument panel. From there you can make your journey easier, more comfortable, better connected. You can find your way, search for local services and points of interest, with JAGUAR'S sophisticated Navigation system with DVD mapping. You can also control the audio entertainment, or access Phonebook listings and one-touch dialling functionality for the Bluetooth® telephone connectivity system.

And with JaguarVoice™ - standard on Sovereign models and optional on SE and Sport Premium – many functions can be operated simply by asking. The best technology really doesn't have to be complicated.

Bluetooth® compatibility depends on handset type – for full details go to jaguar.co.uk





AIRBAG



BELLAGIO, COMO

12:48

Nav Menu

Ent Dest.

Store

POI

EXT 23

23 °C

MODE

MIX

AM/FM

CD

CDC

A.MEM

TA

PTY

X-TYPE offers an array of models and features, each focused on meeting the differing needs and *requirements* of your *lifestyle*.



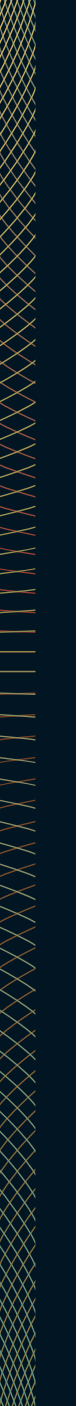
A comprehensive range of equipment is fitted as standard or available as individual options or option packs depending on which model you choose.

Cruise control, automatic headlamps, heated exterior mirrors, rain sensing windscreen wipers and automatic climate control are all standard across the range. Heated front windscreen, headlamp washers and power-folding exterior mirrors add even greater convenience.

High-intensity discharge Xenon headlamps with automatic levelling can help ensure the best possible night vision, whilst front and rear parking aids warn in advance of hidden obstacles like posts or low walls.

The JAGUAR premium sound system – standard on Sovereign models – is acoustically tailored to the X-TYPE's interior, and features a single slot CD player and AM/FM radio with EON, RDS, PTY and TA. The system's power amplifier delivers 320W through ten direct drive speakers in the saloon, and nine in the estate. It can also be specified to include a 6-disc CD changer and where the 7-inch Touch-screen is fitted, there is even the option of a television tuner. Digital Audio Broadcasting (DAB) radio receiver is available as an optional audio system upgrade.

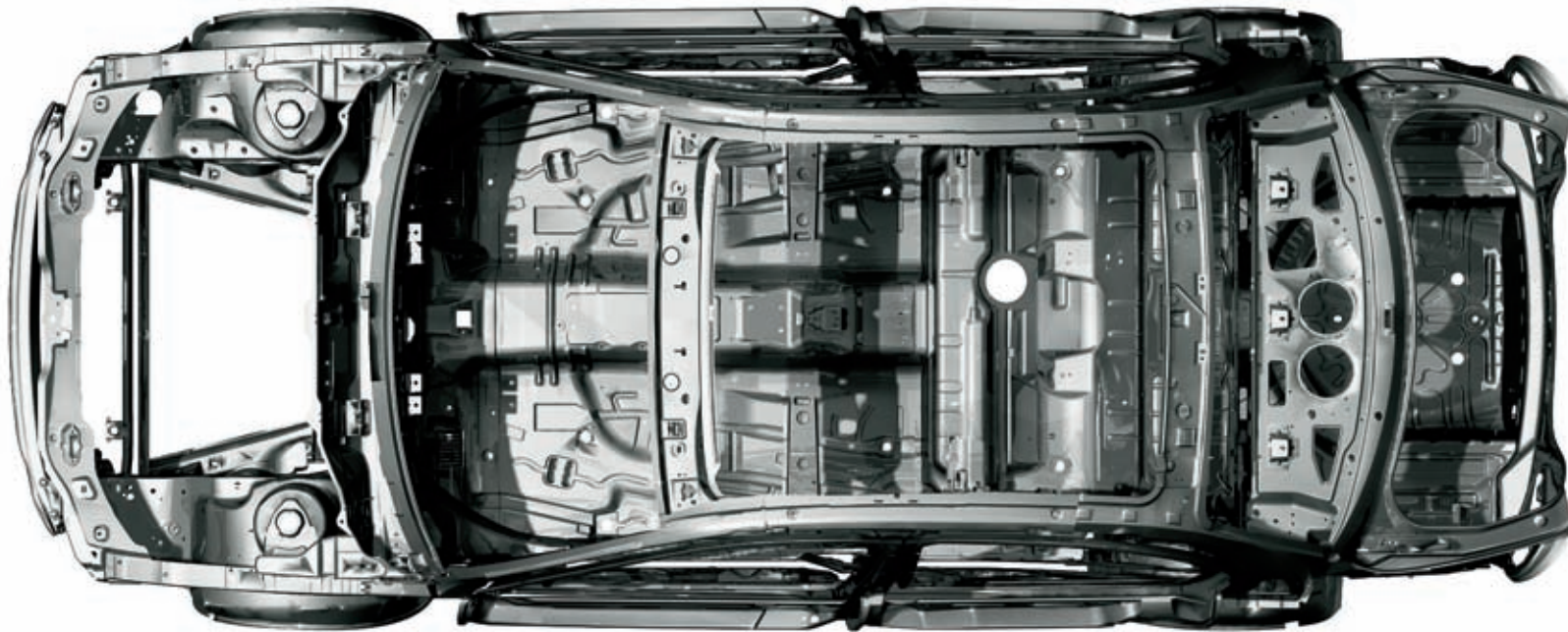




The X-TYPE has SAFETY at *its heart*, and SAFETY in depth and detail.

Safety in the X-TYPE begins with the inherent strength of its body structure. The passenger cell is protected by crumple zones that are designed to absorb energy rather than to feed it into the car, and the doors are reinforced to resist side intrusions. Inside that well-protected cell is the added protection of dual-stage front airbags, plus side bolster and curtain airbags - with the sophistication of occupant sensing systems to help ensure that if front airbags ever do need to deploy, they do it in precisely the best way to look after you. The X-TYPE's seat belts feature pyrotechnic pre-tensioners for front seats, along with three rear head restraints.

But long before any of that, the X-TYPE has the foundation of features that help avoid difficult situations: superbly balanced roadholding and handling, and for when you need maximum support, a powerful four channel Anti-Lock Braking System (ABS), Dynamic Stability Control (DSC), and Emergency Brake Assist (EBA) across the range. If EBA senses a rapid application of the brake pedal, which may indicate an emergency stop, the system is designed to automatically deliver additional brake pressure to bring the braking force into the area where ABS becomes active. This allows shorter stopping distances with improved steering control some time before the driver alone would have achieved the same effect. It is a very powerful defence system.








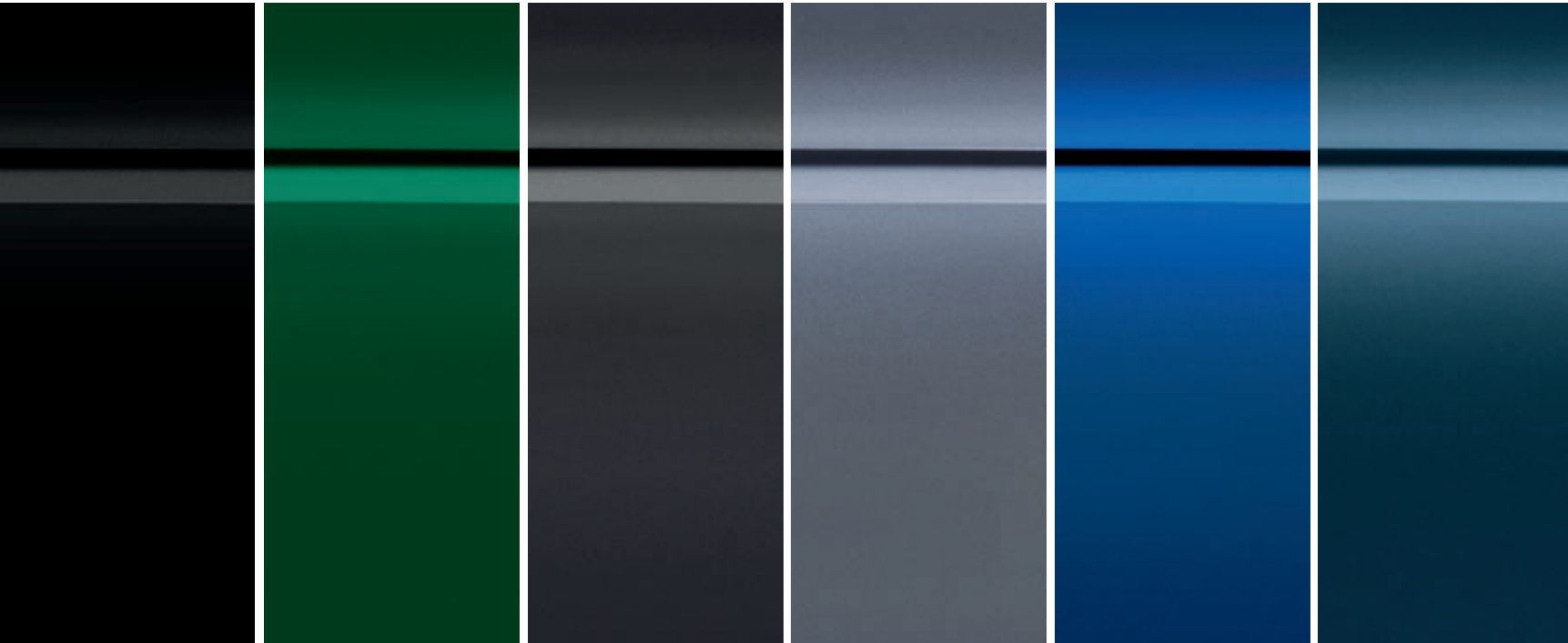
The *art* of making the X-TYPE your own – *a matter of choice.*

Your X-TYPE will be a central part of your life, and your family's life; and because your life has its own style and dynamics, you should choose the details to match.

Every X-TYPE can be an individual in almost anything you see and touch – from the wheels you ride on, to the detail of the seats you sit in and the trim that highlights the cabin around you. There is an extensive choice of exterior paint colours and alloy wheel designs. And with interior specifications that include five seat and trim colours and three seat styles, new horizontal or diamond twin-needle stitching on the leather upholstery, and four very different veneer finishes, it may be some time before you reach a decision.



EXTERIOR COLOURS



Ultimate Black*

Emerald Fire*

Tektite Grey*

Glacier Blue*

Lazuli Blue*

Indigo*†



Ionian*[‡]

Shadow Grey*

Liquid Silver*

Porcelain

Winter Gold*

Chilli*

*Metallic paint
[‡]Available until late 2008. [‡]Available from early 2009.

BERMUDA 17" ALLOY WHEEL



BELIZE 17" ALLOY WHEEL

BARBADOS 17" ALLOY WHEEL





PROTEUS 18" ALLOY WHEEL

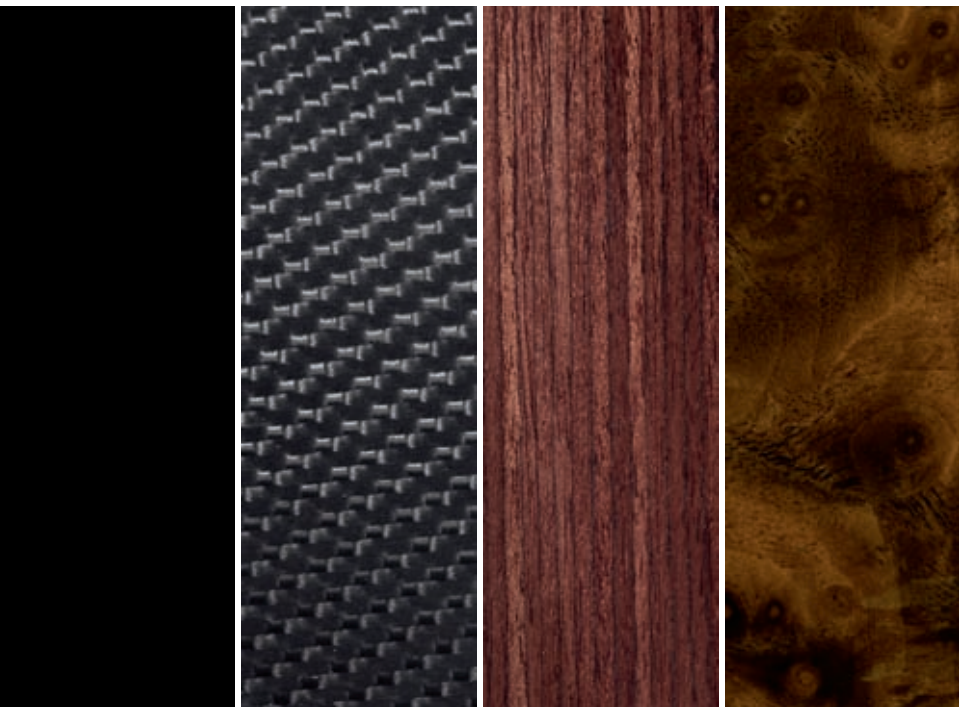


ABACO 18" ALLOY WHEEL



VALENCIA 18" ALLOY WHEEL

INTERIOR VENEERS



Piano Black

Carbon Fibre

Rosewood

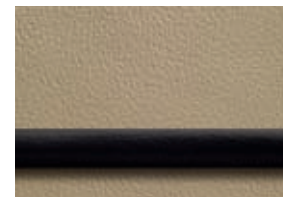
Burr Walnut

CONTRAST STITCHING

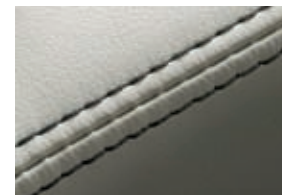
CONTRAST PIPING



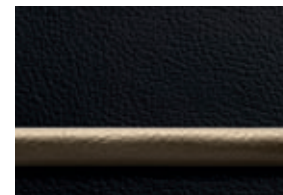
Warm Charcoal / Stone



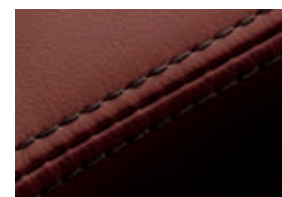
Barley / Warm Charcoal



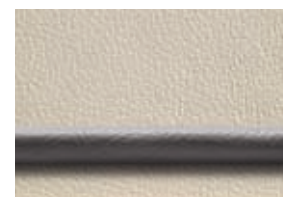
Ivory / Warm Charcoal



Warm Charcoal / Barley



Spice / Warm Charcoal



Ivory / Oyster

SEAT COLOURS



Warm Charcoal

Spice

Ivory

Barley

TRIM COLOURS



Warm Charcoal

Oyster
(upper fascia only)

Barley

Ivory

DESIGNER'S CHOICE

EXTERIOR COLOUR	LEATHER TRIM	UPPER FACIA	DESIGNER'S CHOICE
ULTIMATE BLACK*	Ivory	Oyster	□
	Ivory	Warm Charcoal	■
	Barley	Warm Charcoal	■
	Warm Charcoal	Warm Charcoal	■
	Spice**	Warm Charcoal	■
EMERALD FIRE*	Ivory	Oyster	■
	Ivory	Warm Charcoal	□
	Barley	Warm Charcoal	□
	Warm Charcoal	Warm Charcoal	□
	Spice**	Warm Charcoal	□
TEKTITE GREY*	Ivory	Oyster	□
	Ivory	Warm Charcoal	□
	Barley	Warm Charcoal	■
	Warm Charcoal	Warm Charcoal	■
	Spice**	Warm Charcoal	■

EXTERIOR COLOUR	LEATHER TRIM	UPPER FACIA	DESIGNER'S CHOICE
GLACIER BLUE*	Ivory	Oyster	■
	Ivory	Warm Charcoal	■
	Barley	Warm Charcoal	□
	Warm Charcoal	Warm Charcoal	□
	Spice**	Warm Charcoal	□
LAZULI BLUE*	Ivory	Oyster	□
	Ivory	Warm Charcoal	□
	Barley	Warm Charcoal	□
	Warm Charcoal	Warm Charcoal	■
	Spice**	Warm Charcoal	□
INDIGO*†	Ivory	Oyster	■
	Ivory	Warm Charcoal	□
	Barley	Warm Charcoal	□
	Warm Charcoal	Warm Charcoal	□
	Spice**	Warm Charcoal	□

EXTERIOR COLOUR	LEATHER TRIM	UPPER FACIA	DESIGNER'S CHOICE
-----------------	--------------	-------------	-------------------

IONIAN*‡	Ivory	Oyster	■
	Ivory	Warm Charcoal	□
	Barley	Warm Charcoal	□
	Warm Charcoal	Warm Charcoal	□
	Spice**	Warm Charcoal	□
SHADOW GREY*	Ivory	Oyster	□
	Ivory	Warm Charcoal	□
	Barley	Warm Charcoal	□
	Warm Charcoal	Warm Charcoal	■
	Spice**	Warm Charcoal	■
LIQUID SILVER*	Ivory	Oyster	□
	Ivory	Warm Charcoal	■
	Barley	Warm Charcoal	□
	Warm Charcoal	Warm Charcoal	■
	Spice**	Warm Charcoal	■

EXTERIOR COLOUR	LEATHER TRIM	UPPER FACIA	DESIGNER'S CHOICE
-----------------	--------------	-------------	-------------------

PORCELAIN	Ivory	Oyster	■
	Ivory	Warm Charcoal	□
	Barley	Warm Charcoal	□
	Warm Charcoal	Warm Charcoal	□
	Spice**	Warm Charcoal	□
WINTER GOLD*	Ivory	Oyster	■
	Ivory	Warm Charcoal	□
	Barley	Warm Charcoal	□
	Warm Charcoal	Warm Charcoal	□
	Spice**	Warm Charcoal	□
CHILLI*	Ivory	Oyster	□
	Ivory	Warm Charcoal	■
	Barley	Warm Charcoal	□
	Warm Charcoal	Warm Charcoal	■
	Spice**	Warm Charcoal	□

■ Designers Choice □ Available
 All exterior paint colours are available with all interior colour combinations.
 *Metallic Paint † Available until mid 2008 ‡ Available from early 2009
 **Only available on Sport Premium derivatives.

INTERIOR THEMES

S



LEATHER & CLOTH TWIN NEEDLE HORIZONTAL STITCH SEAT

Barley

Warm Charcoal*

UPPER FACIA

Warm Charcoal

Warm Charcoal*

LOWER FACIA

Barley

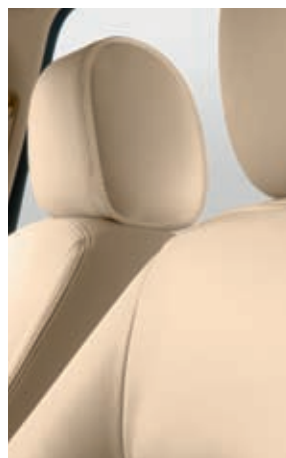
Warm Charcoal*

STANDARD VENEER (options)

Piano Black
(Rosewood)

Piano Black*
(Rosewood)

SE



LEATHER TWIN NEEDLE HORIZONTAL STITCH SEAT

Ivory

Ivory

Barley*

Warm Charcoal

UPPER FACIA

Oyster

Warm Charcoal

Warm Charcoal*

Warm Charcoal

LOWER FACIA

Ivory

Ivory

Barley*

Warm Charcoal

STANDARD VENEER (options)

Rosewood
(Piano Black)

Rosewood
(Piano Black)

Rosewood*
(Piano Black)

Rosewood
(Piano Black)

SPORT PREMIUM



SOFTGRAIN LEATHER TWIN NEEDLE DIAMOND STITCH SEAT (with contrast stitching)

Ivory (Warm Charcoal)

Warm Charcoal (Stone)

Spice (Warm Charcoal)*

UPPER FACIA

Warm Charcoal

Warm Charcoal

Warm Charcoal*

LOWER FACIA

Warm Charcoal

Warm Charcoal

Warm Charcoal*

STANDARD VENEER (options)

Carbon Fibre (Rosewood) (Piano Black)

Carbon Fibre (Rosewood) (Piano Black)

Carbon Fibre* (Rosewood) (Piano Black)

SOVEREIGN



LEATHER TWIN NEEDLE HORIZONTAL STITCH SEAT (with contrast piping)

Ivory (Oyster)*

Barley (Warm Charcoal)

Warm Charcoal (Barley)

UPPER FACIA

Oyster*

Warm Charcoal

Warm Charcoal

LOWER FACIA

Ivory*

Barley

Warm Charcoal

STANDARD VENEER

Burr Walnut*

Burr Walnut

Burr Walnut

*Combination as shown

STANDARD FEATURES

MODEL AND ENGINES	S 2.0L D/2.2L D	SE 2.0L D/2.2L D in addition to S	Sport Premium 2.0L D/2.2L D/3.0L V6* in addition to SE	Sovereign 2.0L D/2.2L D/3.0L V6* in addition to SE
TRANSMISSION, SUSPENSION AND BRAKES	<ul style="list-style-type: none"> ◦ 5-speed manual transmission (2.0L D) ◦ 6-speed manual transmission (2.2L D) ◦ Traction control (2.0L D/2.2L D) ◦ Touring suspension ◦ Dynamic Stability Control (DSC) with Emergency Brake Assist (EBA) ◦ Electric PTC heater (2.0L D/2.2L D) 		<ul style="list-style-type: none"> ◦ 5-speed automatic transmission with J Gate (3.0L V6) ◦ Sports suspension ◦ Jaguar Traction[®] full time All-Wheel Drive (AWD) (3.0L V6) (in lieu of Traction control) 	<ul style="list-style-type: none"> ◦ 5-speed automatic transmission with J Gate (3.0L V6) ◦ Jaguar Traction[®] full time All-Wheel Drive (AWD) (3.0L V6) (in lieu of Traction control)
EXTERIOR	<ul style="list-style-type: none"> ◦ Body colour grille surround with chrome inner surround ◦ Bright mesh grille with centre mounted Jaguar growler ◦ Bright front splitter vane ◦ Body colour door mirrors with integrated side repeaters ◦ Satin black side window surrounds ◦ Chrome rear signature blade ◦ Black roof rails (estate) ◦ Roof spoiler (estate) ◦ Automatic headlamps with manual levelling ◦ Front fog lamps ◦ Rain sensing windscreen wipers ◦ Heated exterior mirrors with electric adjustment ◦ Heated rear window with timer ◦ Infotainment roof pod 	<ul style="list-style-type: none"> ◦ Chrome side window surrounds ◦ Power-folding exterior mirrors ◦ Headlamp washers ◦ Heated windscreen with timer ◦ Front and rear parking aid 	<ul style="list-style-type: none"> ◦ Satin black side window surrounds ◦ Rear spoiler (saloon) 	<ul style="list-style-type: none"> ◦ Metallic paint ◦ Sovereign badging
WHEELS	<ul style="list-style-type: none"> ◦ Belize 7J x 17" alloy wheels ◦ Space saver spare wheel 	<ul style="list-style-type: none"> ◦ Barbados 7J x 17" alloy wheels 	<ul style="list-style-type: none"> ◦ Abaco 7.5J x 18" alloy wheels 	
INTERIOR	<ul style="list-style-type: none"> ◦ Twin needle horizontal stitch seats with leather and cloth seat facings (4 way driver/4 way passenger adjustment) ◦ Folding 70/30 split rear seats ◦ Piano Black veneer ◦ Leather 4-spoke steering wheel with remote controls for audio, cruise control, Bluetooth[®] telephone connectivity and optional JaguarVoice[™] ◦ Leather gear knob⁽³⁾ ◦ Cruise control ◦ Automatic climate control with pollen filter ◦ Front and rear electric windows with one-touch open/close and anti-trap 	<ul style="list-style-type: none"> ◦ Twin needle horizontal stitch seats with leather seat facings (6 way driver/6 way passenger adjustment) ◦ 2-stage heated front seats ◦ Rosewood veneer ◦ Door inserts to match seat trim colour with diagonal twin needle stitch pattern ◦ Front and rear carpet mat set ◦ Front ashtray with cigar lighter ◦ Luggage compartment cargo net (estate) 	<ul style="list-style-type: none"> ◦ Twin needle diamond stitch seats with Softgrain leather seat facings and contrast stitching (10 way driver/10 way passenger adjustment) ◦ Memory function with 3 settings for driver's seat and exterior mirrors ◦ Door inserts to match seat trim colour with diamond twin needle stitch patterns ◦ Carbon Fibre veneer 	<ul style="list-style-type: none"> ◦ Twin needle horizontal stitch seats with leather seat facings and contrast piping (10 way driver/10 way passenger adjustment) ◦ Memory function with 3 settings for driver's seat and exterior mirrors ◦ Burr Walnut veneer ◦ Burr Walnut door inserts ◦ Burr Walnut/leather 4-spoke steering wheel with remote controls for audio, cruise control, JaguarVoice[™] and Bluetooth[®] telephone connectivity ◦ Rear sill tread plates

*3.0 litre available as estate only option with standard 5-speed automatic transmission

MODEL AND ENGINES	S 2.0L D/2.2L D	SE 2.0L D/2.2L D in addition to S	Sport Premium 2.0L D/2.2L D/3.0L V6* in addition to SE	Sovereign 2.0L D/2.2L D/3.0L V6* in addition to SE
INTERIOR continued	<ul style="list-style-type: none"> ◦ Front sill tread plates ◦ Front centre console storage compartment with sliding armrest ◦ Front storage tray with auxiliary power socket ◦ Steering column with manual adjustment for height and reach ◦ Interior rear view mirror with auto-dimming ◦ Sun visors with illuminated vanity mirrors for driver and front passenger ◦ Twin front cup holders ◦ Three rear head restraints ◦ Rear centre armrest with twin cup holders ◦ Trip computer with message centre ◦ Chrome Luggage anchor points (estate) ◦ Luggage cover (estate) ◦ Under floor storage with auxiliary power socket (estate) 			
AUDIO AND COMMUNICATIONS	<ul style="list-style-type: none"> ◦ Jaguar sound system ◦ Single slot CD player ◦ Bluetooth® telephone connectivity 	<ul style="list-style-type: none"> ◦ Navigation system with DVD mapping and 7 inch Touch-screen⁽¹⁾ 		<ul style="list-style-type: none"> ◦ Jaguar premium sound system ◦ 6-disc luggage compartment CD changer ◦ JaguarVoice™

Please refer to the glossary below for a more detailed description of features.

SAFETY AS STANDARD

Airbags, front and side (driver and front passenger)
Side curtain airbags (front and rear)
Occupancy sensing
Anti-lock Braking System (ABS)
Front and rear seat belts pre-tensioners
Front and rear crumple zones

SECURITY AS STANDARD

2-stage unlock
Locking wheel nuts
Remote control central locking with drive away locking intrusion and perimeter alarm with engine immobiliser

GLOSSARY

Jaguar Traction® full time All-Wheel Drive (AWD) – Standard on 3.0 V6 litre petrol models. Normally distributes power in a 40/60 front/rear split, redirecting power to achieve optimum traction the moment it senses a difference in grip between the front and rear wheels.

DSC (Dynamic Stability Control) with EBA – intervenes in demanding driving situations by applying braking to individual wheels and reducing engine torque. If it detects that the car is not turning in accordance with the steering input, it reduces engine power and gently applies the brakes so that stability and full control are restored. The EBA system measures the rate at which the brake pedal is activated. If the system detects an emergency braking situation, EBA automatically initiates the full braking effect. This can reduce stopping distances in critical situations.

Twin needle horizontal stitch seat with leather and cloth seat facings (4/4 way) – Driver and passenger's electric recline and height adjustment.

Twin needle horizontal stitch seat with leather seat facings (6/6 way) – Driver and passenger's electric recline, height and lumbar support adjustment.

Twin needle diamond stitch seat with Softgrain leather seat facings and contrast stitching (10/10 way) – Driver and passenger's electric adjustment including fore/aft, recline, height, cushion tilt and lumbar support. Also includes 3 position memory function for driver's seat and exterior mirrors.

Twin needle horizontal stitch seat with leather seat facings and contrast piping (10/10 way) – Driver and passenger's electric adjustment including fore/aft, recline, height, cushion tilt and lumbar support. Also includes 3 position memory function for driver's seat and exterior mirrors.

Navigation system⁽¹⁾ – with DVD mapping, postcode entry, destination on the move entry and voice guidance, including 7" Touch-screen controls for audio and automatic climate control, Bluetooth® telephone connectivity and (where fitted) JaguarVoice™

Jaguar sound system – with radio featuring EON, RDS, PTY, TA and single slot CD Player with automatic volume control and 6 speakers

Jaguar premium sound system – With radio featuring EON, RDS, PTY, TA and single slot CD player with automatic volume control. This delivers 320W of total sound output, channelled through 10 unique Dual Direct Drive speakers (9 speakers in the Estate with the same 320W output) that through DSP (Digital Signal Processing) are acoustically tailored to the X-TYPE's interior

Bluetooth® telephone connectivity⁽⁴⁾ – A Bluetooth® equipped Jaguar, enables hands-free use of your mobile phone at any time when the phone is in the car and up to 5 separate mobiles to be paired to the car. Bluetooth® is compatible with a selected range of mobile phones from a number of different manufacturers.

JaguarVoice™ – Voice control of audio, automatic climate control, Bluetooth® telephone connectivity and Navigation system.

Cold Climate Pack – Headlamp washers, heated front windscreen and 2-stage heated front seats.

Convenience Pack – Metallic paint, front and rear parking aids and power-folding exterior mirrors.
S Sport Pack – Abaco 7.5J x 18" alloy wheels with space saver spare wheel, sports suspension and rear spoiler (saloon).

DAB radio – Digital Audio Broadcasting (DAB) radio receiver.

Jaguar Sequential Shift™ – 6-speed automatic transmission (2.2L D) with fully automatic Drive and Sport modes and one-touch Sport manual mode.

Diesel Particulate Filter (DPF)# – Catalysed Diesel Particulate Filter is a filter system that catches the very fine diesel soot particles that arise in combustion engines. The filter system reduces soot particle emissions to near zero, not only exceeding European emissions standards (EURO STAGE IV) but also helping to reduce the level of pollutants in the environment.

⁽¹⁾ Country mapping DVD covers: Andorra, Austria, Belgium, Denmark, Finland, France, Germany, Ireland, Italy, Liechtenstein, Luxembourg, Monaco, Norway, Portugal, San Marino, Spain, Sweden, Switzerland, Netherlands, United Kingdom, Vatican City, Czech Republic (will be added in 2007CY update - due in Q3) All can opt for either British, French, Spanish, German or Italian language modules.

⁽²⁾ Full size spare wheel is not available with 18" wheels or estate body style. In these instances, a space saver spare is supplied.

⁽³⁾ Leather gearknob for all 2.0L D / 2.2L D Leather gearknob with Piano Black inserts for all 2.2L D automatic transmissions Piano Black gearknob for all 3.0L V6 automatic transmissions with Carbon Fibre Veneer Wooden gearknob for all 3.0L V6 automatic transmissions with Rosewood or Burr Walnut Veneers

⁽⁴⁾ The Bluetooth® word mark and logos are owned by the Bluetooth SIG, Inc. and any use of such marks by Jaguar Cars Limited is under license.

#Please consult your dealer for availability.

OPTIONAL FEATURES

MODEL AND ENGINE	S 2.0L D/2.2L D	SE 2.0L D/2.2L D	Sport Premium 2.0L D/2.2L D/3.0L V6*	Sovereign 2.0L D/2.2L D/3.0L V6*
TRANSMISSION, SUSPENSION AND BRAKES	<ul style="list-style-type: none"> ◦ 6-speed automatic transmission with Jaguar Sequential Shift™ (2.2L D automatic includes DPF as standard) ◦ Diesel Particulate Filter (DPF) (2.2L D manual) 	<ul style="list-style-type: none"> ◦ 6-speed automatic transmission with Jaguar Sequential Shift™ (2.2L D automatic includes DPF as standard) ◦ Diesel Particulate Filter (DPF) (2.2L D manual) 	<ul style="list-style-type: none"> ◦ 6-speed automatic transmission with Jaguar Sequential Shift™ (2.2L D automatic includes DPF as standard) ◦ Diesel Particulate Filter (DPF) (2.2L D manual) 	<ul style="list-style-type: none"> ◦ 6-speed automatic transmission with Jaguar Sequential Shift™ (2.2L D automatic includes DPF as standard) ◦ Diesel Particulate Filter (DPF) (2.2L D manual)
EXTERIOR	<ul style="list-style-type: none"> ◦ Metallic paint ◦ Power-folding exterior mirrors ◦ Electric glass sunroof with sunblind and tilt/slide one touch operation ◦ Silver roof rails (estate) 	<ul style="list-style-type: none"> ◦ Metallic paint ◦ Xenon headlamps with automatic levelling ◦ Electric glass sunroof with sunblind and tilt/slide one touch operation ◦ Silver roof rails (estate) 	<ul style="list-style-type: none"> ◦ Metallic paint ◦ Xenon headlamps with automatic levelling ◦ Electric glass sunroof with sunblind and tilt/slide one touch operation ◦ Silver roof rails (estate) 	<ul style="list-style-type: none"> ◦ Xenon headlamps with automatic levelling ◦ Electric glass sunroof with sunblind and tilt/slide one touch operation ◦ Silver roof rails (estate)
WHEELS	<ul style="list-style-type: none"> ◦ Proteus 7.5J x 18" alloy wheels ◦ Valencia 7.5J x 18" alloy wheels ◦ Full size 17" spare alloy wheel (saloon only)⁽²⁾ 	<ul style="list-style-type: none"> ◦ Belize 7J x 17" alloy wheels ◦ Bermuda 7J x 17" alloy wheels ◦ Proteus 7.5J x 18" alloy wheels ◦ Valencia R 7.5J x 18" alloy wheels ◦ Full size 17" spare alloy wheel (saloon only)⁽²⁾ 	<ul style="list-style-type: none"> ◦ Proteus 7.5J x 18" alloy wheels ◦ Valencia 7.5J x 18" alloy wheels 	<ul style="list-style-type: none"> ◦ Belize 7J x 17" alloy wheels ◦ Bermuda 7J x 17" alloy wheels ◦ Proteus 7.5J x 18" alloy wheels ◦ Valencia R 7.5J x 18" alloy wheels ◦ Full size 17" spare alloy wheel (saloon only)⁽²⁾
INTERIOR	<ul style="list-style-type: none"> ◦ Twin needle horizontal stitch seats with leather seat facings (6 way driver/6 way passenger adjustment). Only available in Warm Charcoal and Barley ◦ 2-stage heated front seats ◦ Rosewood veneer ◦ Front and rear carpet mat set ◦ Front ashtray with cigar lighter** ◦ Luggage compartment cargo net (estate) 	<ul style="list-style-type: none"> ◦ Ivory trim ◦ Piano Black veneer** ◦ Front storage tray with auxiliary power socket** 	<ul style="list-style-type: none"> ◦ Ivory trim with contrast stitching** ◦ Rosewood veneer** ◦ Piano Black veneer** ◦ Front storage tray with auxiliary power socket** 	<ul style="list-style-type: none"> ◦ Ivory trim with contrast piping ◦ Front storage tray with auxiliary power socket**
AUDIO AND COMMUNICATIONS	<ul style="list-style-type: none"> ◦ Navigation system with DVD mapping and 7 inch Touch-screen⁽¹⁾ ◦ 6-disc luggage compartment CD changer ◦ DAB radio 	<ul style="list-style-type: none"> ◦ JaguarVoice™ ◦ Jaguar premium sound system ◦ 6-disc luggage compartment CD changer ◦ DAB radio ◦ Television Tuner 	<ul style="list-style-type: none"> ◦ JaguarVoice™ ◦ Jaguar premium sound system ◦ 6-disc luggage compartment CD changer ◦ DAB radio ◦ Television Tuner 	<ul style="list-style-type: none"> ◦ DAB radio ◦ Television Tuner
PACKS	<ul style="list-style-type: none"> ◦ Cold Climate Pack ◦ Convenience Pack ◦ S Sport Pack (available only with 18" Abaco alloy wheels) 			

Please refer to the glossary on the previous page for a more detailed description of features.

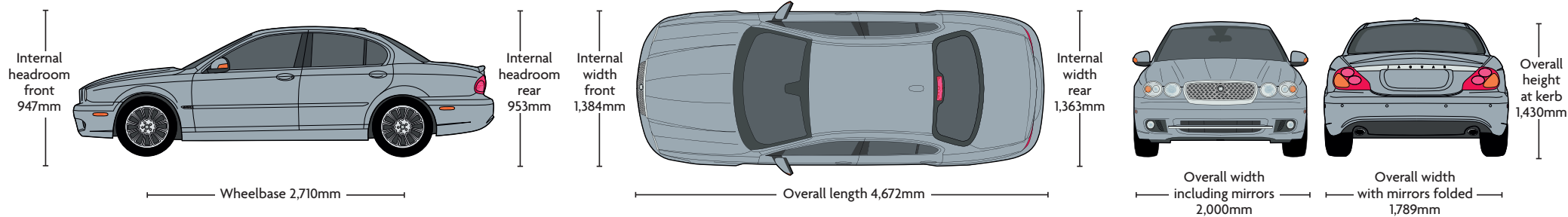
*3.0 litre available as estate only option with standard 5-speed automatic transmission

** Optional at no extra cost

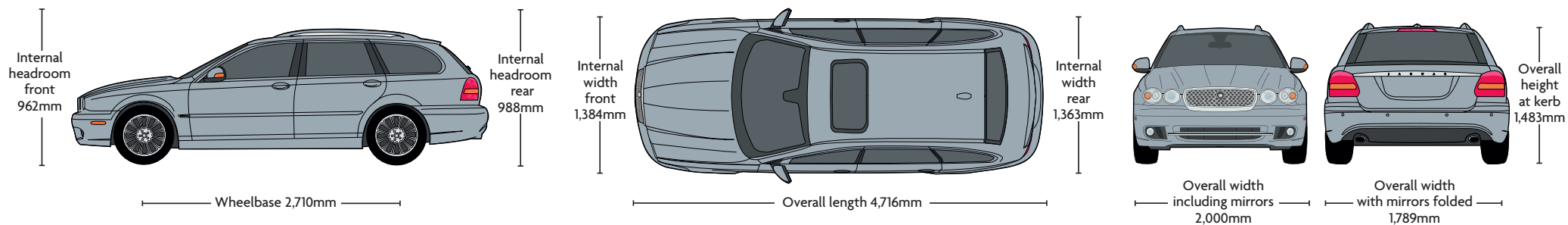
†Please consult your dealer for availability

DIMENSIONS

SALOON



ESTATE



TECHNICAL SPECIFICATIONS

SALOON

ENGINE	2.0 Litre Diesel	2.2 Litre Diesel *With optional DPF	2.2 Litre Diesel With standard DPF
Cylinders/valves per cylinder	4/4	4/4	4/4
Bore/Stroke – mm	86/86	86/94.6	86/94.6
Capacity – cc	1,998	2,198	2,198
Maximum power – EEC - PS (kW)	130 (96)	155 (114)/*145 (107)	145 (107)
@ rev/min	3,500	3,500	3,500
Maximum torque – Nm (lb.ft.)	330 (243)	360 (266)	360 (266)
@ rev/min	1,800	1,800	1,800
Compression ratio:1	18.2	17.5	17.5
Transmission	5-speed manual	6-speed manual	6-speed auto
PERFORMANCE (manufacturer's estimates)			
Acceleration 0-60 mph (0-100 km/h) – sec	9.5 (9.9)	8.5 (8.9)/*8.7 (9.1)	9.5 (9.9)
Top speed – mph (km/h)	125 (201)	137 (220)/*134 (216)	129 (208)
FUEL CONSUMPTION ⁽¹⁾			
Urban – mpg (l/100km)	37.2 (7.6)	34.0 (8.3)/34.5 (8.2)	29.6 (9.5)
Extra urban – mpg (l/100km)	62.8 (4.5)	60.0 (4.7)/58.9 (4.8)	51.9 (5.4)
Combined – mpg (l/100km)	50.0 (5.6)	47.1 (6.0)	41.0 (6.9)
Carbon dioxide emissions – g/km	149	159	184
Tank capacity – gals (Ltr) approx. (incl. 5 Ltr reserve)	13.5 (61.5)	13.5 (61.5)	13.5 (61.5)
WEIGHT ⁽²⁾			
Kerb weight – lb (kg)	3,311 (1,502)	3,311 (1,502)	3,377 (1,532)
Gross vehicle weight – lb (kg)	4,442 (2,015)	4,486 (2,035)	4,552 (2,065)
Gross combination weight – lb (kg)	7,749 (3,515)	7,793 (3,535)	7,859 (3,656)

Permitted roof load – lb (kg) 165lb (75kg) Permitted trailer load, unbraked⁽³⁾ – lb (kg) 2.0 litre 1,645lb (746kg) 2.2 litre 1,654lb (750kg) Permitted trailer load, braked⁽³⁾ – lb (kg) 3,307lb (1,500kg) Permitted towbar download – lb (kg) 165lb (75kg)
Turning circle – ft. in. (kerb to kerb) 35ft 7in (10.84m) Boot volume – cu. ft. (litres – VDA) 16cu.ft. (452 litres – VDA)

⁽¹⁾ The fuel consumption figures were obtained in tests carried out in line with the Passenger Car Fuel Consumption Amendment Order 1996 (Reflecting EU Directive 1999/100/EEC fuel consumption test cycle). These figures were correct at the time of going to press.

⁽²⁾ Weights reflect vehicles to standard specifications. Optional extras increase weight.

⁽³⁾ Up to maximum 12% gradient.

*Catalysed Diesel Particulate Filter is an optional filter system that catches the very fine diesel soot particles that arise in combustion engines. The filter system reduces soot particle emissions to near zero, not only exceeding European emissions standards (EURO STAGE IV) but also helping to reduce the level of pollutants in the environment. Please consult your dealer for availability.

ESTATE

ENGINE	2.0 Litre Diesel	2.2 Litre Diesel *With optional DPF	2.2 Litre Diesel With standard DPF	3.0 Litre V6 Petrol Estate only
Cylinders/valves per cylinder	4/4	4/4	4/4	6/4
Bore/Stroke – mm	86/86	86/94.6	86/94.6	89.0 / 79.5
Capacity – cc	1,998	2,198	2,198	2,967
Maximum power – EEC - PS (kW)	130 (96)	155 (114)/*145 (107)	145 (107)	231 (169.4)
@ rev/min	3,500	3,500	3,500	6,800
Maximum torque – Nm (lb.ft.)	330 (243)	360 (266)	360 (266)	279.3 (206)
@ rev/min	1,800	1,800	1,800	3,000
Compression ratio:1	18.2	17.5	17.5	10.5
Transmission	5-speed manual	6-speed manual	6-speed auto	5-speed auto
PERFORMANCE (manufacturer's estimates)				
Acceleration 0-60 mph (0-100 km/h) - sec	9.8 (10.2)	8.9 (9.3)/*9.1 (9.5)	9.9 (10.3)	7.3 (7.8)
Top speed – mph (km/h)	123 (198)	134 (215)/*131 (211)	125 (201)	141 (227)
FUEL CONSUMPTION ⁽¹⁾				
Urban – mpg (l/100km)	36.4 (7.8)	33.6 (8.4)	29.6 (9.5)	18.5 (15.2)
Extra urban – mpg (l/100km)	60.0 (4.7)	57.7 (4.9)	51.9 (5.4)	35.9 (7.9)
Combined – mpg (l/100km)	48.7 (5.8)	45.6 (6.2)	41 (6.9)	26.6 (10.6)
Carbon dioxide emissions – g/km	154	164	184	254
Tank capacity – gals (Ltr) approx. (incl. 5 Ltr reserve)	13.5 (61.5)	13.5 (61.5)	13.5 (61.5)	13.5 (61.5)
WEIGHT ⁽²⁾				
Kerb weight – lb (kg)	3,473 (1,575)	3,473 (1,575)	3,534 (1,605)	3,605 (1,635)
Gross vehicle weight – lb (kg)	4,575 (2,075)	4,608 (2,090)	4,674 (2,120)	4,729 (2,145)
Gross combination weight – lb (kg)	7,882 (3,575)	7,915 (3,590)	7,981 (3,620)	8,036 (3,645)

Permitted roof load – lb (kg) 165lb (75kg) Permitted trailer load, unbraked⁽³⁾ – lb (kg) 1,654lb (750kg) Permitted trailer load, braked⁽³⁾ – lb (kg) 3,307lb (1,500kg) Permitted towbar download – lb (kg) 165lb (75kg) Turning circle – ft. in. (kerb to kerb) 35ft 7in (10.84m) Luggage capacity – rear seats up to luggage blind – cu. ft. (litres – VDA) 16cu.ft. (445litres – VDA) Maximum luggage capacity – rear seats folded down – cu. ft. (litres - VDA) 50cu.ft. (1,415litres – VDA)

⁽¹⁾ The fuel consumption figures were obtained in tests carried out in line with the Passenger Car Fuel Consumption Amendment Order 1996 (Reflecting EU Directive 1999/100/EEC fuel consumption test cycle). These figures were correct at the time of going to press.

⁽²⁾ Weights reflect vehicles to standard specifications. Optional extras increase weight.

⁽³⁾ Up to maximum 12% gradient.

*Catalysed Diesel Particulate Filter is an optional filter system that catches the very fine diesel soot particles that arise in combustion engines. The filter system reduces soot particle emissions to near zero, not only exceeding European emissions standards (EURO STAGE IV) but also helping to reduce the level of pollutants in the environment. Please consult your dealer for availability.



JAGUAR

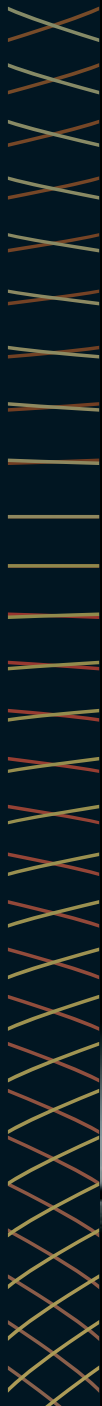
Because you will always want the *finishing touch*...

Detail is everything, and JAGUAR Accessories are the perfect way to complete the picture. The comprehensive range offers the opportunity to personalise your X-TYPE's appearance to add even greater functionality and convenience.

X-TYPE's Rear Screen Connectivity System allows rear seat passengers to connect DVD players, games consoles or camcorders and play them through two independently

operating 5.6 inch LCD screens integrated into the front head restraints. The system also includes two sets of dual band, infrared wireless headphones. It can help keep younger passengers happy on even the longest journey - so you might never again hear the old cry, 'are we there yet?'







...and because you like to be **INDIVIDUAL**...



you can also add individuality to your X-TYPE's exterior, with accessories such as the sporting boot-lid spoiler, chrome mirror covers or Proteus 18-inch alloy wheels. And, there are accessories to support an active lifestyle such as the easy to load cycle/mountain bike carrier.



The X-TYPE ownership experience. SERVICE, ASSURANCE, and PEACE OF MIND are all part of the pride of *owning your* X-TYPE.

THE JAGUAR ACCESSORY RANGE

Enabling you to personalise your car, to create a driving experience that is even more individually rewarding. All JAGUAR accessories are tested rigorously for safety and durability in the most arduous of climates and conditions. A comprehensive range of styling options, interior and exterior accessories, enabling you to tailor your X-TYPE to suit your personal style.

BECAUSE ONLY THE BEST WILL DO

An official JAGUAR dealer or Approved Service Centre can ensure that JAGUAR trained, specialist technicians, with access to the full range of JAGUAR approved parts and tools, will always be on hand to guarantee that every fitting, or repair, is carried out exactly the way JAGUAR intended. Your JAGUAR dealer or Approved Service Centre can also supply and fit JAGUAR approved accessories to personalise and add to the practicality and style of your X-TYPE model.

TOTAL CARE

Providing a seamless support system for you and your X-TYPE with regular servicing, 3 year unlimited mileage warranty, paint and corrosion guarantee and JAGUAR Assistance Programme.

SERVICE AND ASSURANCE

Complete peace of mind, as well as Standard Price Servicing. Total Tyre Care includes everything from checking tread depth to wheel alignment and competitively priced tyre replacement. Seasonal Health Checks guarantee that, 365 days a year, your X-TYPE stays in premium condition.

JAGUAR ASSISTANCE

Your own JAGUAR 24 hour Incident Management Support programme, ensuring that JAGUAR trained assistance technicians are on hand should circumstances arise: from a roadside puncture, to difficulties following an accident.

WARRANTY

3 year unlimited mileage warranty together with a 3 year unlimited mileage Paint Surface Warranty and 6 year unlimited mileage Corrosion (Perforation) Warranty. Extended warranties are also available. The options lengthen the standard 3 year unlimited mileage warranty to cover a further 12, 24 or 36 months, giving unlimited mileage warranty through years 4, 5 and 6 of ownership.

JAGUAR MAGAZINE

From travel to fashion, chic to champagne, JAGUAR magazine is an owner's publication like no other. JAGUAR articles touch on everything from exclusive holiday destinations to fine wines, art to architecture. As well as features and interviews bringing all the latest news from the world of X-TYPE and JAGUAR.

JAGUAR.CO.UK

The interactive jaguar.co.uk website features helpful tools such as the dealer locator, model specifications - allowing you to see the car tailored to your specification and colour - and price lists; the latest information on all the JAGUAR models and a fascinating look into the passion and legacy that infuse the JAGUAR name.

JAGUAR FINANCIAL SERVICES

Whether your requirements are business or personal, JAGUAR Financial Services offers maximum choice and flexibility with a wide range of financial and insurance plans tailored to your needs.

JAGUAR BUSINESS PARTNER

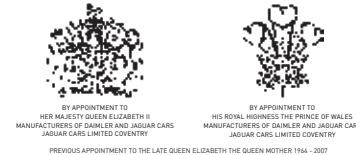
JAGUAR Business Partner makes your business life easier, by giving you access to a comprehensive range of vehicle funding packages. JAGUAR Business Partner is designed to be affordable, convenient, flexible and simple. Each package can be tailored to your individual needs whether you want just one vehicle or are running a fleet. But we offer more than just a financial package. JAGUAR Business Partner also takes on the time-consuming burden of managing and maintaining your fleet, so you are free to get on with running your business.

COMPANY OPT OUT

JAGUAR Financial Services has developed for JAGUAR Cars Limited a wide range of finance and insurance plans for business customers, as well as for private individuals opting out of a company car scheme. Contact your JAGUAR dealer for more information regarding the JAGUAR Privilege PCP programme and JAGUAR Insurance.



JAGUAR



IMPORTANT NOTICE

Jaguar Cars Limited is constantly seeking ways to improve the specification, design and production of its vehicles and alterations take place continually. Whilst every effort is made to produce up-to-date literature, this brochure should not be regarded as an infallible guide to current specifications, nor does it constitute an offer for the sale of any particular vehicle.

Distributors and dealers are not agents of Jaguar Cars Limited and have absolutely no authority to bind Jaguar Cars Limited by any express or implied undertaking or representation. Illustrations in this brochure may include optional extras.

Comparisons are based on manufacturer's own data and testing.

ENVIRONMENTAL NOTICE

Jaguar Cars Limited has a vision of being amongst the world's leading companies in demonstrating progress towards sustainability. We aim to do this by contributing to a better quality of life, with corporate citizenship at the very heart of our company, and by reducing our environmental footprint through innovative design and manufacturing, minimizing resource and energy use. Environmental responsibility is a core value in Jaguar, and it is our policy to continually improve our environmental standards in all areas of business activity.

This brochure is produced using certified FSC mixed sources material from well managed forests and is manufactured under a strict ISO 14001 environmental system. 10% of this material is recovered fibre, diverting waste from landfill.

ILLUSTRATIONS

Page 2: X-TYPE *Sovereign in Liquid Silver with Barbados alloy wheels*

Page 8: X-TYPE *Sovereign in Liquid Silver with Barbados alloy wheels*

Page 10: X-TYPE *Estate Sovereign in Liquid Silver with Barbados alloy wheels and optional silver roof rails*

Page 13: X-TYPE *SE in Liquid Silver with optional Belize alloy wheels*

Page 14: X-TYPE *Estate Sovereign in Liquid Silver with Barbados alloy wheels and optional silver roof rails*

Page 16: X-TYPE *Sport Premium in Liquid Silver with Abaco alloy wheels*

Page 19: X-TYPE *SE with Ivory leather, Rosewood veneer and diesel auto shift*

Page 20: X-TYPE *SE with Ivory leather*

Page 22: X-TYPE *Estate SE with Ivory leather and Rosewood veneer*

Page 25: X-TYPE *Sport Premium with Warm Charcoal leather, Carbon Fibre veneer and Petrol automatic gearbox*

Page 55: X-TYPE *Sovereign in Liquid Silver with Barbados alloy wheels*



Mixed Sources

Product group from well-managed forests and other controlled sources
www.fsc.org Cert no. TT-COC-002370
© 1996 Forest Stewardship Council

Jaguar Cars Limited, Abbey Road, Whitley, Coventry CV3 4LF

Printed in England

JLM/10/02/26/0908

jaguar.co.uk

Victoria 46

Victoria 46






JAGUAR