

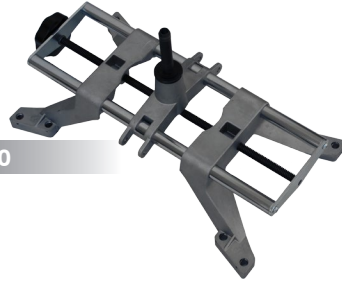
WHEEL ALIGNMENT STANDARD KIT

DWA1000XLB STANDARD KIT

Standard kit for DWA1000XLB Wheel Alignment

STANDARD KIT FOR
DWA1000XLB

WHEEL TYPE
Car and Light Truck



46DW66130
x4



21DW76363
x4



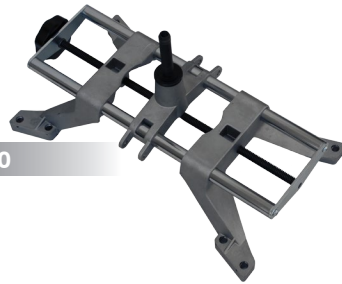
46DWA7503
x4

DWA1000XL STANDARD KIT

Standard kit for DWA1000XL Wheel Alignment

STANDARD KIT FOR
DWA1000XL

WHEEL TYPE
Car and Light Truck



46DW66130
x4



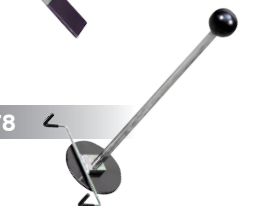
21DW76363
x4



46DWA7503
x4



74A010479



74A010478

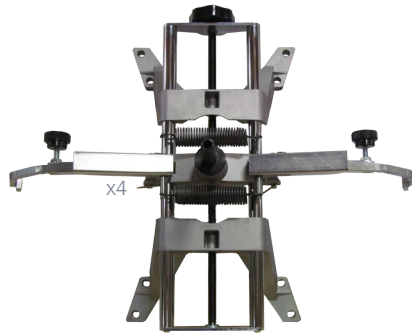
TRUCK WHEEL ALIGNMENT STANDARD KIT

DWA1000XLT STANDARD KIT

Standard kit for DWA1000XLT Wheel Alignment

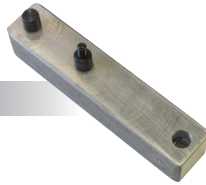
STANDARD KIT FOR
DWA1000XLT

WHEEL TYPE
Heavy-Duty Truck



46DW75803

x16



77F002897

x4



46DW75330

x4



77F000383

x4



77F000381

x4



77F000379

x4



77F002359

x4



21DW76363

x4



74A010479



74A010478



46DW76312

x4



46DW89766

x4



46DWA7510

x4



WHEEL ALIGNMENT STANDARD KIT

DWA3400 STANDARD KIT

Standard kit for DWA3400 Wheel Alignment

STANDARD KIT FOR
DWA3400

WHEEL TYPE
Car and Light Truck

Front Axle

46DW86391

x2



Rear Axle

46DW86380

x2



46DWA7503

x4



21DW76363

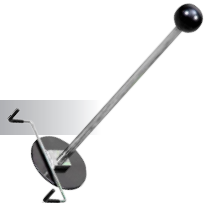
x4



74A010479



74A010478



VIN BARCODE
SCANNER

VIN Barcode Scanner for Wheel Alignment

PART NUMBER
GBT4430

WHEEL TYPE
Car and Light Truck

FITS
DWA1000XLB - DWA1000XL - DWA34000

IT INCLUDES
Software and database upgrade



DUST COVER

Dust cover for Wheel Alignment cabinet

PART NUMBER
397000778

FITS
DWA1000 series - DWA3400



STEERING WHEEL
HOLDER

Steering Wheel Holder to adjust toe-in, toe-out and centering the steering wheel

PART NUMBER
74A010478

FITS
DWA1000 series - DWA3400

STANDARD ON
DWA1000XL - DWA1000XLT - DWA3400



BRAKE PEDAL
DEPRESSOR

Brake Pedal Depressor

PART NUMBER
74A010479

FITS
DWA1000 series - DWA3400

STANDARD ON
DWA1000XL - DWA1000XLT - DWA3400



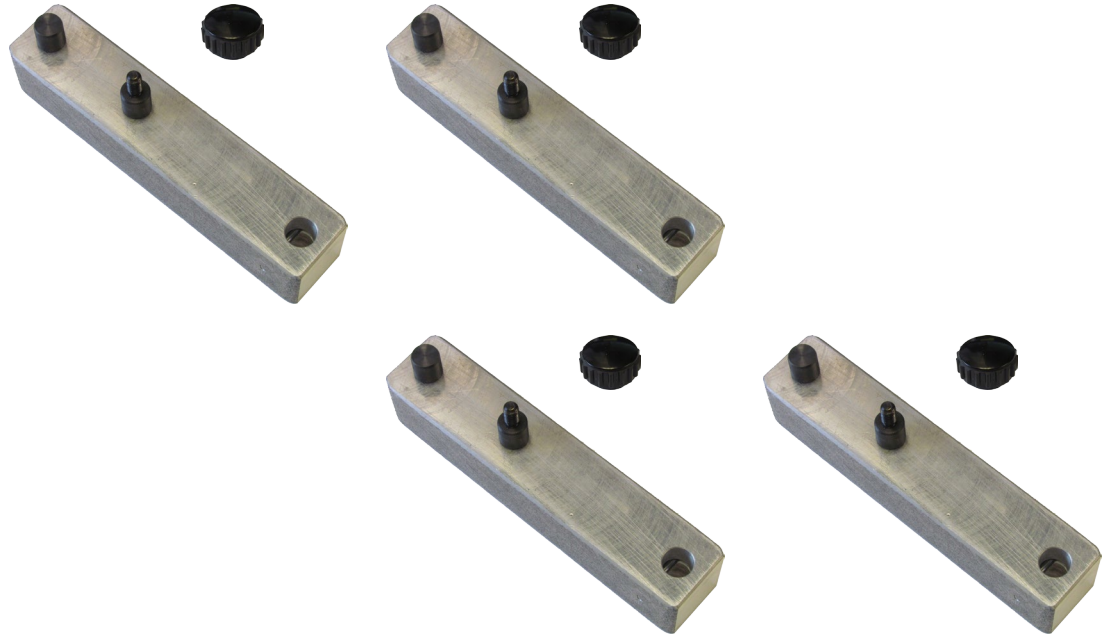
WHEEL CLAMP
EXTENSION

Wheel clamp extension up to 30" (set of 4). This set covers 1 wheel/clamp.

PART NUMBER
46DW75803

FITS
DWA1000 series - DWA3400

STANDARD ON
DWA1000XLT



DROP DOWN KIT

Drop Down Kit. This part number covers 1 wheel/clamp.

PART NUMBER
46DW89395

FITS
DWA1000 series



DUALY WHEEL
PINS

Dually wheel pins (set of 4). This set covers 1 wheel/clamp.

PART NUMBER
46DWA7510

FITS
DWA1000 series - DWA3400

STANDARD ON
DWA1000XLT



BACKUP CABLE
KIT

Backup cable kit to be able to use the heads while charging (set of 4)

PART NUMBER
86SB85932-4

FITS
DWA1000 series



WHEEL GRABBER
KIT

Wheel Grabber Kit* with 30" and 40" arm. This set covers 1 wheel/clamp.

PART NUMBER
46DW75331-40

FITS
DWA1000 series

STANDARD ON
DWA1000XLT

* Wheel clamp not included



IT INCLUDES:

77F002897

x4



77F000381

x4



46DW75330

x4



77F000379

x4



77F000383

x4



77F002359

x4



46DW76312

x4



CAR
TURN PLATES

Car Turn Plates that allows the front suspension of a vehicle to move freely (set of 2)

PART NUMBER
1300025140P

FITS
DWA1000XLB -DWA1000XL - DWA3400

DIMENSIONS
14"x14"x1.5"



CAR REAR
SLIP PLATES

Car Slip Plates that allows the rear suspension of a vehicle to move freely (set of 2)

PART NUMBER
1300020407

FITS
DWA1000XLB -DWA1000XL - DWA3400

DIMENSIONS
14"x14"x1.5"



TRUCK
TURN PLATES

Truck Turn Plates that allows the front suspension of a vehicle to move freely (set of 2)

PART NUMBER
130002524

FITS
DWA1000XLT

DIMENSIONS
18"x18"x2"



TRUCK REAR
GREASE PLATES

Truck Grease Plates that allows the rear suspension of a vehicle to move freely (set of 2)

PART NUMBER
13000DB3030

FITS
DWA1000XLT

DIMENSIONS
18"x18"x2"



24" HIGH
WHEEL STAND KIT

24" high Wheel Stand kit (set of 4) to perform wheel alignment on 2-post lift.

PART NUMBER
13000DB24STANDS

FITS
DWA1000XLB -DWA1000XL



WHEEL STAND
ROLLER KIT

Handle and wheel kit for Wheel Stands (set of 4).

PART NUMBER
13000DB24W

FITS
Wheel Stand Kit 13000DB24STANDS

* Stand not included

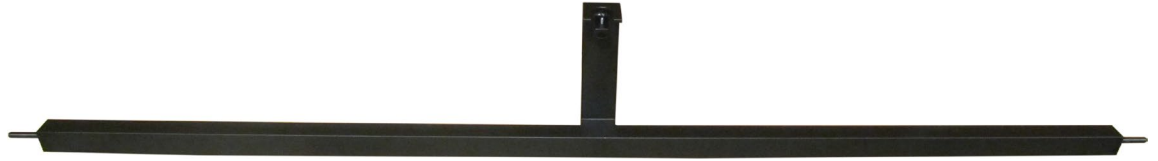


ADAPTOR ROD
FOR SEMITRAILER'S KING PIN

Kingpin adaptor for Wheel Alignment

PART NUMBER
46DW87193

FITS
DWA1000XL



CEMB WHEEL ALIGNMENT
BANNER

CEMB Wheel Alignment Banner

PART NUMBER
BANNER-WA



MEASURING HEADS
CALIBRATION KIT

Calibration kit for DWA1000 Series measuring heads.

PART NUMBER
46DW90924

FITS
DWA1000 Series

