



# COOL-FIT 4.0



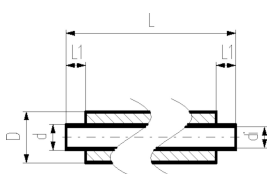
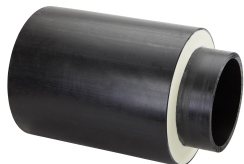
# Table of contents

---

COOL-FIT 4.0 Pipes and Fittings	4
COOL-FIT 4.0 Transition Fittings	19
COOL-FIT 4.0 Weld-in port	38
COOL-FIT 4.0 Flexible Hoses	40
COOL-FIT 4.0 Valves	41
COOL-FIT 4.0 Accessories	49
COOL-FIT 4.0 Heat tracing	60
COOL-FIT 4.0 Tools	62
COOL-FIT 4.0 Spare parts	66

---

# COOL-FIT 4.0 Pipes and Fittings



## COOL-FIT 4.0 Pipe d32-d450

### Model:

- Pre-insulated PE100 SDR11/17 metric
- Insulation made from GF HE foam
- Impact resistant. Color: black
- Length: 5m for d32-d225, 5.9m for d250-d450
- With free ends for electrofusion

d (mm)	d/D (mm)	DN (mm)	SDR	PN (bar)	Code	Weight (kg/m)	di (mm)	L (mm)	L1 (mm)	closest inch (inch)
32	32/90	25	11	16	<b>738 173 108</b>	1.411	26.2	5000	36	1
40	40/110	32	11	16	<b>738 173 109</b>	2.054	32.6	5000	40	1 1/4
50	50/110	40	11	16	<b>738 173 110</b>	2.221	40.8	5000	44	1 1/2
63	63/125	50	11	16	<b>738 173 111</b>	2.987	51.4	5000	48	2
75	75/140	65	11	16	<b>738 173 112</b>	3.757	61.4	5000	55	2 1/2
90	90/160	80	11	16	<b>738 173 113</b>	4.819	73.6	5000	62	3
110	110/180	100	11	16	<b>738 173 114</b>	6.200	90.0	5000	72	4
140	140/225	125	11	16	<b>738 173 116</b>	9.676	123.4	5000	84	5
160	160/250	150	17	10	<b>738 173 117</b>	9.921	141.0	5000	90	6
225	225/315	200	17	10	<b>738 173 120</b>	16.620	198.2	5000	110	8
250	250/355	250	17	10	<b>738 173 021</b>	18.180	220.4	5900	123	10
280	280/400	250	17	10	<b>738 173 022</b>	22.640	246.8	5900	126	10
315	315/450	300	17	10	<b>738 173 023</b>	28.510	277.6	5900	133	12
355	355/500	350	17	10	<b>738 173 024</b>	35.350	312.8	5900	148	14
400	400/560	400	17	10	<b>738 173 125</b>	44.070	352.6	5900	150	16
450	450/630	450	17	10	<b>738 173 126</b>	55.490	396.6	5900	165	18

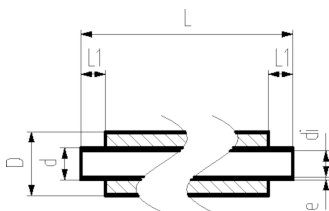
## COOL-FIT 4.0 Pipe d160-d450 SDR11

### Model:

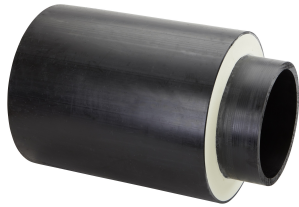
- Pre-insulated PE100 SDR11 metric
- Insulation made from GF HE foam
- Outer jacket impact resistant. Color: black
- Length: 5m for d160+d225, 5.9m for d250-d450
- With free ends for electrofusion

### Note:

Make to order



d (mm)	d/D (mm)	DN (mm)	SDR	PN (bar)	Code	Weight (kg/m)	di (mm)	L (mm)	L1 (mm)	closest inch (inch)
160	160/250	150	11	16	<b>738 173 267</b>	12.213	130.8	5000	90	6
225	225/315	200	11	16	<b>738 173 270</b>	21.169	184.0	5000	110	8
250	250/355	250	11	16	<b>738 173 271</b>	24.681	204.6	5900	123	10
280	280/400	250	11	16	<b>738 173 272</b>	31.731	229.2	5900	126	10
315	315/450	300	11	16	<b>738 173 273</b>	39.333	257.8	5900	133	12
355	355/500	350	11	16	<b>738 173 274</b>	49.614	290.6	5900	148	14
400	400/560	400	11	16	<b>738 173 275</b>	62.811	327.4	5900	150	16
450	450/630	450	11	16	<b>738 173 276</b>	76.431	368.2	5900	165	18



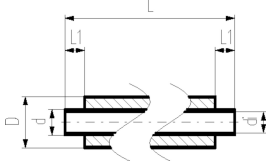
### COOL-FIT 4.0 Pipe d160-d450 SDR11 11.9m length

#### Model:

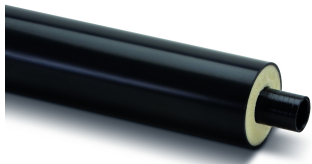
- Pre-insulated PE100 SDR11 metric
- Insulation made from GF HE foam
- Outer jacket impact resistant. Color: black
- Length: 11.9m
- With free ends for electrofusion

#### Note:

Consider transport and handling possibilities  
Make to order



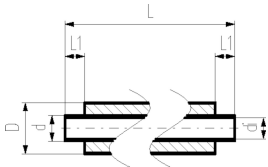
d (mm)	d/D (mm)	DN (mm)	SDR	PN (bar)	Code	Weight (kg/m)	di (mm)	L (mm)	L1 (mm)	closest inch (inch)
160	160/250	150	11	16	<b>738 173 287</b>	12.213	130.8	11900	90	6
225	225/315	200	11	16	<b>738 173 290</b>	21.169	184.0	11900	110	8
250	250/355	250	11	16	<b>738 173 291</b>	24.681	204.6	11900	123	10
280	280/400	250	11	16	<b>738 173 292</b>	31.731	229.2	11900	126	10
315	315/450	300	11	16	<b>738 173 293</b>	39.333	257.8	11900	133	12
355	355/500	350	11	16	<b>738 173 294</b>	49.614	290.6	11900	148	14
400	400/560	400	11	16	<b>738 173 295</b>	62.811	327.4	11900	150	16
450	450/630	450	11	16	<b>738 173 296</b>	76.431	368.2	11900	165	18



### COOL-FIT 4.0F Pipe Fire retardant

#### Model:

- Pre-insulated PE100 SDR 17 metric
- Insulation made from GF HE foam
- Fire retardant jacket. Color: black
- With free ends for electrofusion



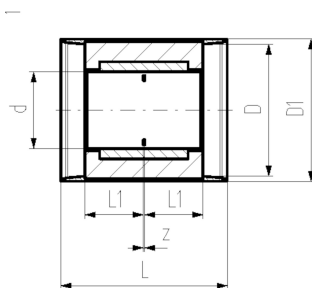
d (mm)	d/D (mm)	DN (mm)	SDR	PN (bar)	Code	di (mm)	L (mm)	L1 (mm)	closest inch (inch)
160	160/250	150	17	10	<b>738 173 317</b>	141.0	5000	90	6
225	225/315	200	17	10	<b>738 173 320</b>	198.2	5000	110	8



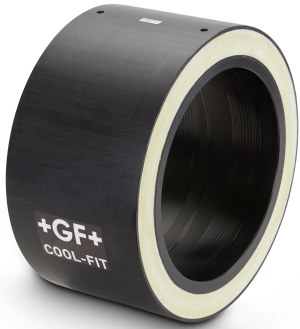
### COOL-FIT 4.0 Coupler d32-d225

#### Model:

- Pre-insulated PE100 SDR 11 metric
- Insulation made from GF HE foam
- Impact resistant. Color: black
- Integrated sealing lip, for a moisture-proof and vapour tight sealing



d (mm)	d/D (mm)	DN (mm)	SDR	PN (bar)	Code	Weight (kg)	D1 (mm)	L (mm)	L1 (mm)	z (mm)	closest inch (inch)
32	32/90	25	11	16	<b>738 913 108</b>	0.179	97	127	36	5	1
40	40/110	32	11	16	<b>738 913 109</b>	0.129	117	133	40	3	1 ¼
50	50/110	40	11	16	<b>738 913 110</b>	0.169	117	141	44	3	1 ½
63	63/125	50	11	16	<b>738 913 111</b>	0.240	132	149	48	3	2
75	75/140	65	11	16	<b>738 913 112</b>	0.520	147	163	55	3	2 ½
90	90/160	80	11	16	<b>738 913 113</b>	0.750	168	178	62	4	3
110	110/180	100	11	16	<b>738 913 114</b>	0.831	188	198	72	4	4
140	140/225	125	11	16	<b>738 913 116</b>	1.565	233	221	84	3	5
160	160/250	150	11	16	<b>738 913 117</b>	1.726	258	233	90	3	6
225	225/315	200	11	16	<b>738 913 120</b>	3.783	324	275	110	5	8

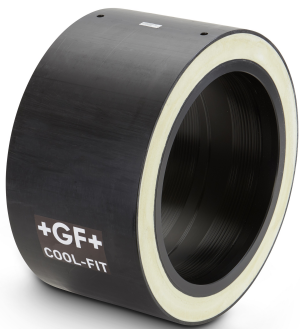
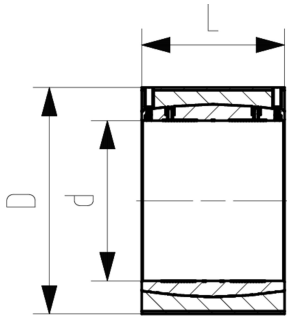


**COOL-FIT 4.0 Coupler  
d250-d450**

**Model:**

- Pre-insulated PE100 SDR 17 metric
- Insulation made from GF HE foam
- Outer jacket impact resistant. Color: black

d (mm)	d/D (mm)	DN (mm)	SDR	PN (bar)	Code	Weight (kg)	L (mm)	closest inch (inch)
250	250/355	250	17	10	<b>738 911 821</b>	6.290	247	10
280	280/400	250	17	10	<b>738 911 822</b>	8.020	252	10
315	315/450	300	17	10	<b>738 911 823</b>	9.110	267	12
355	355/500	350	17	10	<b>738 911 824</b>	13.780	290	14
400	400/560	400	17	10	<b>738 911 875</b>	23.450	294	16
450	450/630	450	17	10	<b>738 911 876</b>	22.590	326	18



**COOL-FIT 4.0 Coupler  
d250-d450, SDR11**

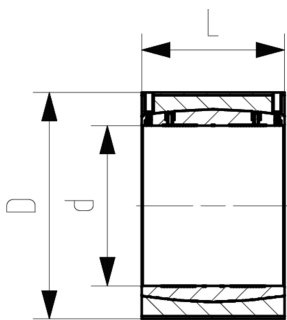
**Model:**

- Pre-insulated PE100 SDR11 metric
- Insulation made from GF HE foam
- Outer jacket impact resistant. Color: black

**Note:**

Make to order

d (mm)	d/D (mm)	DN (mm)	SDR	PN (bar)	Code	Weight (kg)	L (mm)	closest inch (inch)
250	250/355	250	11	16	<b>738 913 271</b>	6.352	247	10
280	280/400	250	11	16	<b>738 913 272</b>	9.910	252	10
315	315/450	300	11	16	<b>738 913 273</b>	11.150	267	12
355	355/500	350	11	16	<b>738 913 274</b>	17.356	290	14
400	400/560	400	11	16	<b>738 913 275</b>	23.770	294	16
450	450/630	450	11	16	<b>738 913 276</b>	31.290	326	18

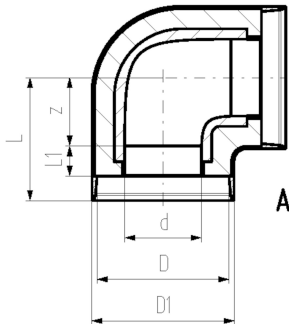




**COOL-FIT 4.0 Elbow 90°  
d32-d225**

**Model:**

- Pre-insulated PE100 SDR11, metric
- Insulation made from GF HE foam
- Outer jacket impact resistant. Color: black
- A: Electrofusion Fitting with integrated sealing lip, for a water and vapour tight sealing



d (mm)	d/D (mm)	DN (mm)	SDR	PN (bar)	Code	Weight (kg)
32	32/90	25	11	16	<b>738 103 108</b>	0.255
40	40/110	32	11	16	<b>738 103 109</b>	0.177
50	50/110	40	11	16	<b>738 103 110</b>	0.250
63	63/125	50	11	16	<b>738 103 111</b>	0.372
75	75/140	65	11	16	<b>738 103 112</b>	0.800
90	90/160	80	11	16	<b>738 103 113</b>	1.500
110	110/180	90	11	16	<b>738 103 114</b>	1.950
140	140/225	125	11	16	<b>738 103 116</b>	3.707
160	160/250	150	11	16	<b>738 103 117</b>	5.200
225	225/315	200	11	16	<b>738 103 120</b>	12.400

d (mm)	d/D (mm)	D1 (mm)	L (mm)	L1 (mm)	z (mm)	closest inch (inch)	Type
32	32/90	97	81	36	20	1	A
40	40/110	117	88	40	23	1 ¼	A
50	50/110	117	99	44	30	1 ½	A
63	63/125	132	107	48	34	2	A
75	75/140	147	120	55	40	2 ½	A
90	90/160	168	150	62	63	3	A
110	110/180	188	174	72	77	4	A
140	140/225	233	196	84	87	5	A
160	160/250	258	220	90	105	6	A
225	225/315	324	345	110	210	8	A



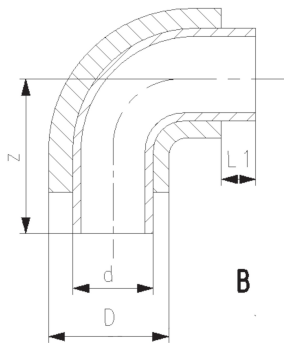
**COOL-FIT 4.0 Bend 90°  
d250-d450, SDR11**

**Model:**

- Pre-insulated PE100 SDR11 metric
- Insulation made from GF HE foam
- Outer jacket impact resistant. Color: black
- B: Spigot Fitting with free end (separate electrofusion fitting needed for joining)

**Note:**

Make to order



d (mm)	d/D (mm)	DN (mm)	SDR	PN (bar)	Code	Weight (kg)	L1 (mm)	z (mm)	closest inch (inch)	Type
250	250/355	250	11	16	<b>738 003 271</b>	11.900	123	375	10	B
280	280/400	250	11	16	<b>738 003 272</b>	18.252	126	430	10	B
315	315/450	300	11	16	<b>738 003 273</b>	28.750	133	470	12	B
355	355/500	350	11	16	<b>738 003 274</b>	65.000	148	900	14	B
400	400/560	400	11	16	<b>738 003 275</b>	81.840	150	980	16	B
450	450/630	450	11	16	<b>738 003 276</b>	109.900	165	1070	18	B

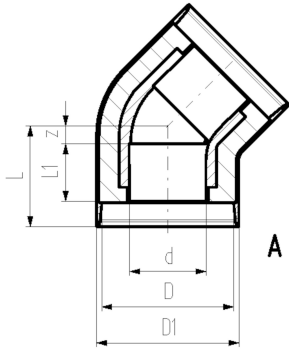




**COOL-FIT 4.0 Elbow 45°  
d32-d225**

**Model:**

- Pre-insulated PE100 SDR11, metric
- Insulation made from GF HE foam
- Outer jacket impact resistant. Color: black
- A: Electrofusion Fitting with integrated sealing lip, for a water and vapour tight sealing



d (mm)	d/D (mm)	DN (mm)	SDR	PN (bar)	Code	Weight (kg)
32	32/90	25	11	16	<b>738 153 108</b>	0.108
40	40/110	32	11	16	<b>738 153 109</b>	0.162
50	50/110	40	11	16	<b>738 153 110</b>	0.218
63	63/125	50	11	16	<b>738 153 111</b>	0.315
75	75/140	65	11	16	<b>738 153 112</b>	0.650
90	90/160	80	11	16	<b>738 153 113</b>	1.030
110	110/180	90	11	16	<b>738 153 114</b>	1.270
140	140/225	125	11	16	<b>738 153 116</b>	2.958
160	160/250	150	11	16	<b>738 153 117</b>	4.100
225	225/315	200	11	16	<b>738 153 120</b>	17.603

d (mm)	d/D (mm)	D1 (mm)	L (mm)	L1 (mm)	z (mm)	closest inch (inch)	Type
32	32/90	97	72	36	11	1	A
40	40/110	117	76	40	11	1 ¼	A
50	50/110	117	82	44	13	1 ½	A
63	63/125	132	89	48	16	2	A
75	75/140	147	98	55	18	2 ½	A
90	90/160	168	117	62	30	3	A
110	110/180	188	138	72	41	4	A
140	140/225	233	157	84	48	5	A
160	160/250	258	161	90	46	6	A
225	225/315	324	278	110	143	8	A

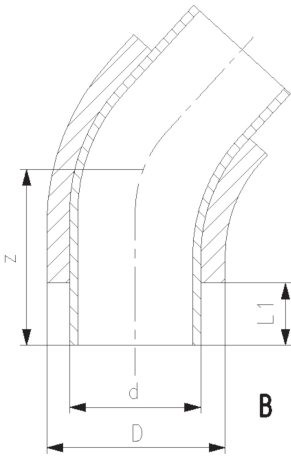
**COOL-FIT 4.0 Bend 45°  
d250-d450**



**Model:**

- Pre-insulated PE100 SDR 17 metric
- Insulation made from GF HE foam
- Outer jacket impact resistant. Color: black
- B: Spigot Fitting with free end (separate electrofusion fitting needed for joining)

d (mm)	d/D (mm)	DN (mm)	SDR	PN (bar)	Code	Weight (kg)	L1 (mm)	z (mm)	closest inch (inch)	Type
250	250/355	250	17	10	<b>738 053 121</b>	12.840	123	440	10	B
280	280/400	250	17	10	<b>738 053 122</b>	18.000	126	460	10	B
315	315/450	300	17	10	<b>738 053 123</b>	21.360	133	535	12	B
355	355/500	350	17	10	<b>738 053 124</b>	18.720	148	620	14	B
400	400/560	400	17	10	<b>738 053 175</b>	43.920	150	650	16	B
450	450/630	450	17	10	<b>738 053 176</b>	54.360	165	680	18	B



**COOL-FIT 4.0 Bend 45°**  
d250-d450, SDR11



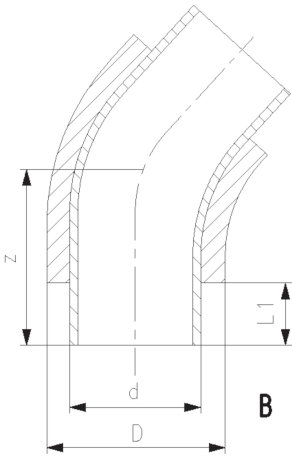
**Model:**

- Pre-insulated PE100 SDR11 metric
- Insulation made from GF HE foam
- Outer jacket impact resistant. Color: black
- B: Spigot Fitting with free end (separate electrofusion fitting needed for joining)

**Note:**

Make to order

d (mm)	d/D (mm)	DN (mm)	SDR	PN (bar)	Code	Weight (kg)	L1 (mm)	z (mm)	closest inch (inch)	Type
250	250/355	250	11	16	<b>738 053 271</b>	15.150	123	440	10	B
280	280/400	250	11	16	<b>738 053 272</b>	25.000	126	460	10	B
315	315/450	300	11	16	<b>738 053 273</b>	28.490	133	535	12	B
355	355/500	350	11	16	<b>738 053 274</b>	46.380	148	620	14	B
400	400/560	400	11	16	<b>738 053 275</b>	55.820	150	650	16	B
450	450/630	450	11	16	<b>738 053 276</b>	78.860	165	680	18	B



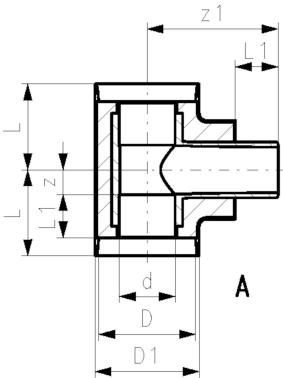
**COOL-FIT 4.0 T90° equal**  
d32-d225



**Model:**

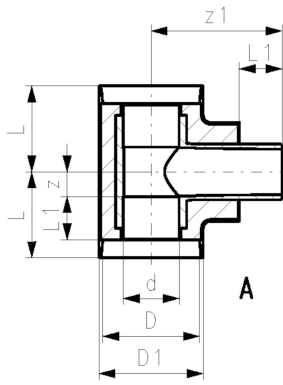
- Pre-insulated PE100 SDR11, metric
- Insulation made from GF HE foam
- Outer jacket impact resistant. Color: black
- A: Electrofusion Fitting with integrated sealing lip, for a water and vapour tight sealing

d (mm)	d/D (mm)	DN (mm)	SDR	PN (bar)	Code	Weight (kg)
32	32/90	25	11	16	<b>738 203 108</b>	0.161
40	40/110	32	11	16	<b>738 203 109</b>	0.257
50	50/110	40	11	16	<b>738 203 110</b>	0.342
63	63/125	50	11	16	<b>738 203 111</b>	0.514
75	75/140	65	11	16	<b>738 203 112</b>	1.000
90	90/160	80	11	16	<b>738 203 113</b>	1.400
110	110/180	100	11	16	<b>738 203 114</b>	2.500
140	140/225	125	11	16	<b>738 203 116</b>	4.627
160	160/250	150	11	16	<b>738 203 117</b>	5.600
225	225/315	200	11	16	<b>738 203 120</b>	16.748



d (mm)	d/D (mm)	D1 (mm)	L (mm)	L1 (mm)	z (mm)	z1 (mm)	closest inch (inch)	Type
32	32/90	97	79	36	18	118.0	1	A
40	40/110	117	87	40	22	132.0	1 ¼	A
50	50/110	117	94	44	25	138.0	1 ½	A
63	63/125	132	103	48	30	154.0	2	A
75	75/140	147	116	55	36	168.0	2 ½	A

table continued on the next page



d (mm)	d/D (mm)	D1 (mm)	L (mm)	L1 (mm)	z (mm)	z1 (mm)	closest inch (inch)	Type
90	90/160	168	130	62	43	187.0	3	A
110	110/180	188	154	72	57	207.0	4	A
140	140/225	233	175	84	66	257.3	5	A
160	160/250	258	192	90	77	263.0	6	A
225	225/315	324	355	110	220	337.0	8	A

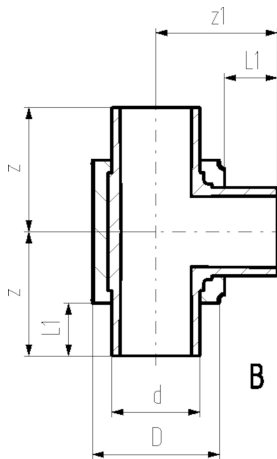


### COOL-FIT 4.0 T90° equal d250-d450

#### Model:

- Pre-insulated PE100 SDR 17 metric
- Insulation made from GF HE foam
- Outer jacket impact resistant. Color: black
- B: Spigot Fitting with free end (separate electrofusion fitting needed for joining)

d (mm)	d/D (mm)	DN (mm)	SDR	PN (bar)	Code	Weight (kg)	L1 (mm)	z (mm)	z1 (mm)	closest inch (inch)	Type
250	250/355	250	17	10	<b>738 203 121</b>	12.000	123	500	500	10	B
280	280/400	250	17	10	<b>738 203 122</b>	22.300	126	500	500	10	B
315	315/450	300	17	10	<b>738 203 123</b>	21.480	133	500	500	12	B
355	355/500	350	17	10	<b>738 203 124</b>	30.600	148	650	700	14	B
400	400/560	400	17	10	<b>738 203 175</b>	42.000	150	650	700	16	B
450	450/630	450	17	10	<b>738 203 176</b>	67.200	165	700	750	18	B



**COOL-FIT 4.0 T90° equal  
d250-d450, SDR11**



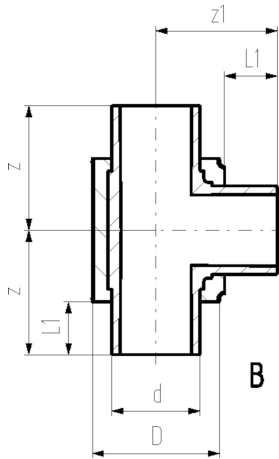
**Model:**

- Pre-insulated PE100 SDR11 metric
- Insulation made from GF HE foam
- Outer jacket impact resistant. Color: black
- B: Spigot Fitting with free end (separate electrofusion fitting needed for joining)

**Note:**

Make to order

d (mm)	d/D (mm)	DN (mm)	SDR	PN (bar)	Code	Weight (kg)	L1 (mm)	z (mm)	z1 (mm)	closest inch (inch)	Type
250	250/355	250	11	16	<b>738 203 271</b>	16.100	123	500	500	10	B
280	280/400	250	11	16	<b>738 203 272</b>	27.620	126	500	500	10	B
315	315/450	300	11	16	<b>738 203 273</b>	29.650	133	500	500	12	B
355	355/500	350	11	16	<b>738 203 274</b>	43.400	148	650	700	14	B
400	400/560	400	11	16	<b>738 203 275</b>	59.700	150	650	700	16	B
450	450/630	450	11	16	<b>738 203 276</b>	91.200	165	700	750	18	B



**COOL-FIT 4.0 T90° reduced  
d32-d225**



**Model:**

- Pre-insulated PE100 SDR11, metric
- Insulation made from GF HE foam
- Outer jacket impact resistant. Color: black
- A: Electrofusion Fitting with integrated sealing lip, for a water and vapour tight sealing
- Availability of 738203251 from May 2023

d (mm)	d/D (mm)	d1/D1 (mm)	DN (mm)	SDR	PN (bar)	Code	Weight (kg)
75	75/140	63/125	65	11	16	<b>738 203 218</b>	0.863
90	90/160	63/125	80	11	16	<b>738 203 222</b>	1.232
90	90/160	75/140	80	11	16	<b>738 203 223</b>	1.293
110	110/180	63/125	100	11	16	<b>738 203 227</b>	1.972
110	110/180	75/140	100	11	16	<b>738 203 228</b>	1.949
110	110/180	90/160	100	11	16	<b>738 203 229</b>	2.037
140	140/225	63/125	125	11	16	<b>738 203 240</b>	4.225
140	140/225	75/140	175	11	16	<b>738 203 241</b>	4.225
140	140/225	90/160	175	11	16	<b>738 203 242</b>	4.047
140	140/225	110/180	125	11	16	<b>738 203 243</b>	4.218
160	160/250	63/125	150	11	16	<b>738 203 447</b>	4.250
160	160/250	90/160	150	11	16	<b>738 203 449</b>	4.420
160	160/250	110/180	150	11	16	<b>738 203 450</b>	4.590
160	160/250	140/225	150	11	16	<b>738 203 251</b>	6.450
160	160/250	140/200	150	11	16	<b>738 204 251</b>	5.540
225	225/315	63/125	200	11	16	<b>738 203 264</b>	16.832
225	225/315	90/160	200	11	16	<b>738 203 266</b>	16.889

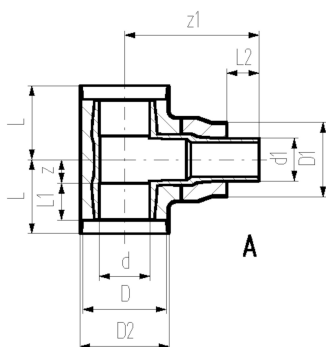
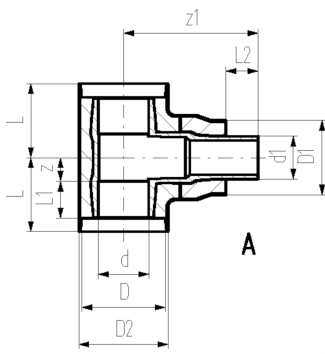


table continued on the next page



d (mm)	d/D (mm)	d1/D1 (mm)	DN (mm)	SDR	PN (bar)	Code	Weight (kg)
225	225/315	110/180	200	11	16	<b>738 203 267</b>	16.805
225	225/315	140/225	200	11	16	<b>738 203 268</b>	18.909
225	225/315	140/200	200	11	16	<b>738 204 268</b>	17.100
225	225/315	160/250	200	11	16	<b>738 203 269</b>	18.500

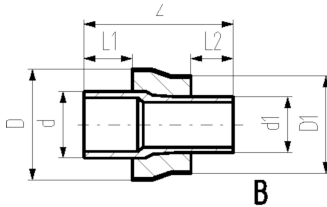
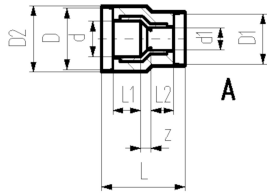
d (mm)	d/D (mm)	d1/D1 (mm)	D2 (mm)	L (mm)	L1 (mm)	L2 (mm)	z (mm)	z1 (mm)	Closest inch (inch)	Type
75	75/140	63/125	147	116	55	48	36	228	2 ½	A
90	90/160	63/125	168	130	62	48	43	253	3 - 2	A
90	90/160	75/140	168	130	62	55	43	252	3 - 2 ½	A
110	110/180	63/125	188	154	72	48	57	267	4 - 2	A
110	110/180	75/140	188	154	72	55	57	268	4 - 2 ½	A
110	110/180	90/160	188	154	72	62	57	268	4 - 3	A
140	140/225	63/125	233	175	84	48	66	221	5 - 2	A
140	140/225	75/140	233	175	84	55	66	231	5 - 2 ½	A
140	140/225	90/160	233	175	84	62	66	234	5 - 3	A
140	140/225	110/180	233	175	84	72	66	243	5 - 4	A
160	160/250	63/125	258	192	90	48	77	221	6 - 2	A
160	160/250	90/160	258	192	90	62	77	235	6 - 3	A
160	160/250	110/180	258	192	90	72	77	245	6 - 4	A
160	160/250	140/225	258	192	90	84	77	340	6 - 5	A
160	160/250	140/200	258	192	90	84	77	340	6 - 5	A
225	225/315	63/125	324	355	110	48	220	412	8 - 2	A
225	225/315	90/160	324	355	110	62	220	412	8 - 3	A
225	225/315	110/180	324	355	110	72	220	412	8 - 4	A
225	225/315	140/225	324	355	110	84	220	413	8 - 5	A
225	225/315	140/200	324	335	110	84	220	412	8 - 5	A
225	225/315	160/250	324	355	110	90	220	396	8 - 6	A



### COOL-FIT 4.0 Reducer d32-d225

#### Model:

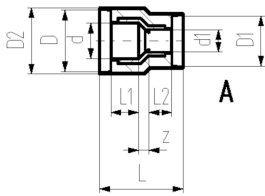
- Pre-insulated PE100 SDR11, metric
- Insulation made from GF HE foam
- Outer jacket impact resistant. Color: black
- A: Electrofusion Fitting with integrated sealing lip, for a water and vapour tight sealing
- B: Spigot Fitting with free end
- 738 904 351 and 738 904 368 for direct transitions from COOL-FIT 4.0 to COOL-FIT 2.0



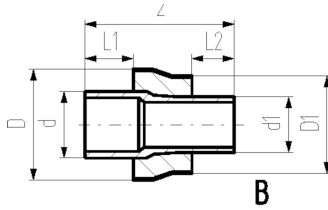
d (mm)	d/D (mm)	d1/D1 (mm)	DN (mm)	SDR	PN (bar)	Code	Weight (kg)
40	40/110	32/90	32	11	16	738 903 206	0.250
50	50/110	32/90	40	11	16	738 903 209	0.280
50	50/110	40/110	40	11	16	738 903 210	0.320
63	63/125	32/90	50	11	16	738 903 212	0.217
63	63/125	40/110	50	11	16	738 903 213	0.232
63	63/125	50/110	50	11	16	738 903 214	0.243
75	75/140	63/125	65	11	16	738 903 318	0.264
90	90/160	63/125	80	11	16	738 903 322	0.387
90	90/160	75/140	80	11	16	738 903 323	0.416
110	110/180	63/125	100	11	16	738 903 327	0.566
110	110/180	75/140	100	11	16	738 903 328	0.577
110	110/180	90/160	100	11	16	738 903 329	0.644
140	140/225	63/125	125	11	16	738 903 340	1.118
140	140/225	75/140	125	11	16	738 903 341	1.202
140	140/225	90/160	125	11	16	738 903 342	1.251
140	140/225	110/180	125	11	16	738 903 343	1.271
160	160/250	63/125	150	11	16	738 903 347	1.298
160	160/250	90/160	150	11	16	738 903 349	1.323
160	160/250	110/180	150	11	16	738 903 350	1.362
160	160/250	140/225	150	11	16	738 903 351	1.845
160	160/250	140/200	150	11	16	738 904 351	1.664
225	225/315	63/125	200	11	16	738 903 364	2.960
225	225/315	90/160	200	11	16	738 903 366	3.018
225	225/315	110/180	200	11	16	738 903 367	3.079
225	225/315	140/225	200	11	16	738 903 368	3.443
225	225/315	140/200	200	11	16	738 904 368	3.172
225	225/315	160/250	200	11	16	738 903 369	3.550

d (mm)	d/D (mm)	d1/D1 (mm)	D2 (mm)	L (mm)	L1 (mm)	L2 (mm)	z (mm)	Closest inch (inch)	Type
40	40/110	32/90	117	143	40	36	17	1 1/4 - 1	A
50	50/110	32/90	117	151	44	36	21	1 1/2 - 1	A
50	50/110	40/110	117	149	44	40	15	1 1/2 - 1 1/4	A
63	63/125	32/90	132	160	48	36	26	2 - 1	A
63	63/125	40/110	132	159	48	40	21	2 - 1 1/4	A
63	63/125	50/110	132	159	48	44	17	2 - 1 1/2	A
75	75/140	63/125			55	48	170	2 1/2 - 2	B
90	90/160	63/125			62	48	190	3 - 2	B
90	90/160	75/140			62	55	189	3 - 2 1/2	B
110	110/180	63/125			72	48	204	4 - 2	B
110	110/180	75/140			72	55	205	4 - 2 1/2	B
110	110/180	90/160			72	62	205	4 - 3	B
140	140/225	63/125			84	48	225	5 - 2	B
140	140/225	75/140			84	55	237	5 - 2 1/2	B
140	140/225	90/160			84	62	238	5 - 3	B
140	140/225	110/180			84	72	233	5 - 4	B
160	160/250	63/125			90	48	244	6 - 2	B
160	160/250	90/160			90	62	244	6 - 3	B
160	160/250	110/180			90	72	242	6 - 4	B
160	160/250	140/225			90	84	257	6 - 5	B
160	160/250	140/200			90	84	257	6 - 5	B
225	225/315	63/125			110	48	295	8 - 2	B

table continued on the next page



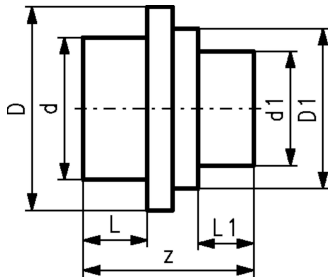
d (mm)	d/D (mm)	d1/D1 (mm)	D2 (mm)	L (mm)	L1 (mm)	L2 (mm)	z (mm)	Closest inch (inch)	Type
225	225/315	90/160			110	62	295	8 - 3	B
225	225/315	110/180			110	72	295	8 - 4	B
225	225/315	140/225			110	84	296	8 - 5	B
225	225/315	140/200			110	84	296	8 - 5	B
225	225/315	160/250			110	90	279	8 - 6	B



### COOL-FIT 4.0 Reducer d250-d450

#### Model:

- Pre-insulated PE100 SDR 17 metric
- Insulation made from GF HE foam
- Outer jacket impact resistant. Color: black
- B: Spigot Fitting with free end (separate electrofusion fitting needed for joining)



d (mm)	d/D (mm)	d1/D1 (mm)	DN	SDR	PN (bar)	Code	Weight (kg)	L (mm)	L1 (mm)	z (mm)	Type
250	250/355	225/315	250	17	10	<b>738 903 825</b>	2.800	123	110	332	B
280	280/400	225/315	250	17	10	<b>738 903 829</b>	4.700	126	110	335	B
280	280/400	250/355	250	17	10	<b>738 903 830</b>	5.100	133	110	365	B
315	315/450	225/315	300	17	10	<b>738 903 836</b>	7.100	126	110	340	B
315	315/450	250/355	300	17	10	<b>738 903 837</b>	7.400	133	123	365	B
315	315/450	280/400	300	17	10	<b>738 903 838</b>	6.800	133	126	365	B
355	355/500	250/355	350	17	10	<b>738 903 844</b>	8.200	148	123	390	B
355	355/500	280/400	350	17	10	<b>738 903 845</b>	7.700	148	126	390	B
355	355/500	315/450	350	17	10	<b>738 903 846</b>	8.300	148	133	390	B
400	400/560	280/400	400	17	10	<b>738 903 853</b>	9.100	150	126	415	B
400	400/560	315/450	400	17	10	<b>738 903 854</b>	11.400	150	133	420	B
400	400/560	355/500	400	17	10	<b>738 903 855</b>	11.000	150	148	405	B
450	450/630	280/400	450	17	10	<b>738 903 862</b>	13.200	165	126	390	B
450	450/630	315/450	450	17	10	<b>738 903 863</b>	13.600	165	133	390	B
450	450/630	355/500	450	17	10	<b>738 903 864</b>	13.700	165	148	393	B
450	450/630	400/560	450	17	10	<b>738 903 865</b>	14.800	165	150	395	B





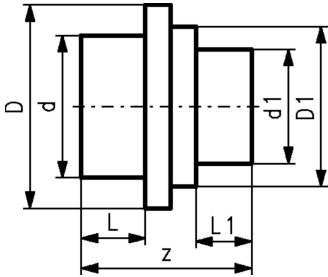
**COOL-FIT 4.0 Reducer**  
**d250-d450, SDR11**

**Model:**

- Pre-insulated PE100 SDR11 metric
- Insulation made from GF HE foam
- Outer jacket impact resistant. Color: black
- B: Spigot Fitting with free end (separate electrofusion fitting needed for joining)

**Note:**

Make to order



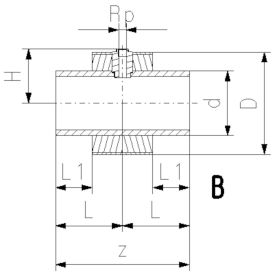
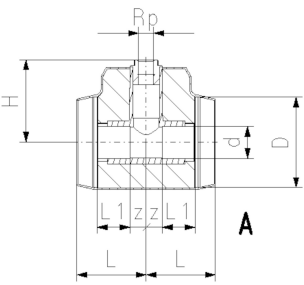
d (mm)	d/D (mm)	d1/D1 (mm)	DN (mm)	SDR	PN (bar)	Code	Weight (kg)	L (mm)	L1 (mm)	z (mm)	Type
250	250/355	225/315	250	11	16	<b>738 903 925</b>	5.365	123	110	332	B
280	280/400	225/315	250	11	16	<b>738 903 929</b>	6.750	126	110	335	B
280	280/400	250/355	250	11	16	<b>738 903 930</b>	7.228	126	123	340	B
315	315/450	225/315	300	11	16	<b>738 903 936</b>	8.690	133	110	365	B
315	315/450	250/355	300	11	16	<b>738 903 937</b>	9.340	133	123	365	B
315	315/450	280/400	300	11	16	<b>738 903 939</b>	9.660	133	126	365	B
355	355/500	250/355	350	11	16	<b>738 903 944</b>	10.218	148	123	390	B
355	355/500	280/400	350	11	16	<b>738 903 945</b>	10.472	148	126	390	B
355	355/500	315/450	350	11	16	<b>738 903 946</b>	10.960	148	133	390	B
400	400/560	280/400	400	11	16	<b>738 903 953</b>	11.590	150	126	415	B
400	400/560	315/450	400	11	16	<b>738 903 954</b>	12.590	150	133	415	B
400	400/560	355/500	400	11	16	<b>738 903 955</b>	12.980	150	148	420	B
450	450/630	280/400	450	11	16	<b>738 903 962</b>	17.900	165	126	405	B
450	450/630	315/450	450	11	16	<b>738 903 963</b>	18.500	165	133	390	B
450	450/630	355/500	450	11	16	<b>738 903 964</b>	19.300	165	148	393	B
450	450/630	400/560	450	11	16	<b>738 903 965</b>	20.336	165	150	395	B



### COOL-FIT 4.0 Installation fitting type 313 Rp d32-d225

#### Model:

- Pre-insulated, PE100, SDR11, metric
- Insulation made from GF HE foam
- Impact resistant. Color: black
- With threaded branch for sensors (i.e temperature, pressure)
- A: Electrofusion Fitting with integrated sealing lip, for a water and vapour tight sealing
- B: Spigot Fitting with free end



d (mm)	d/D (mm)	Thread Type	Size (inch)	DN (mm)	SDR	PN (bar)	Code	Weight (kg)
32	32/90	Rp	½	50	11	16	<b>738 313 608</b>	0.169
40	40/110	Rp	½	32	11	16	<b>738 313 609</b>	0.267
40	40/110	Rp	¾	32	11	16	<b>738 313 659</b>	0.269
50	50/110	Rp	½	40	11	16	<b>738 313 610</b>	0.354
50	50/110	Rp	¾	40	11	16	<b>738 313 660</b>	0.356
63	63/125	Rp	½	50	11	16	<b>738 313 611</b>	0.537
63	63/125	Rp	¾	50	11	16	<b>738 313 661</b>	0.539
75	75/140	Rp	½	65	11	16	<b>738 313 612</b>	0.773
75	75/140	Rp	¾	65	11	16	<b>738 313 662</b>	0.774
90	90/160	Rp	½	80	11	16	<b>738 313 613</b>	1.164
90	90/160	Rp	¾	80	11	16	<b>738 313 663</b>	1.165
110	110/180	Rp	½	100	11	16	<b>738 313 614</b>	1.944
110	110/180	Rp	¾	100	11	16	<b>738 313 664</b>	1.944
140	140/225	Rp	½	125	11	16	<b>738 313 616</b>	3.974
140	140/225	Rp	¾	125	11	16	<b>738 313 666</b>	3.964
160	160/250	Rp	½	150	11	16	<b>738 313 617</b>	2.496
160	160/250	Rp	¾	150	11	16	<b>738 313 667</b>	2.489
225	225/315	Rp	½	200	11	16	<b>738 313 620</b>	5.155
225	225/315	Rp	¾	200	11	16	<b>738 313 670</b>	5.146

d (mm)	d/D (mm)	L (mm)	L1 (mm)	z (mm)	H (mm)	Type
32	32/90	79	36	18	95	A
40	40/110	87	40	22	105	A
40	40/110	87	40	22	108	A
50	50/110	94	44	25	107	A
50	50/110	94	44	25	110	A
63	63/125	103	48	30	120	A
63	63/125	103	48	30	123	A
75	75/140	116	55	36	127	A
75	75/140	116	55	36	130	A
90	90/160	130	62	43	139	A
90	90/160	130	62	43	142	A
110	110/180	154	72	57	151	A
110	110/180	154	72	57	154	A
140	140/225	175	84	66	187	A
140	140/225	175	84	66	190	A
160	160/250	165	90	330	134	B
160	160/250	165	90	330	134	B
225	225/315	185	110	370	166	B
225	225/315	185	110	370	169	B



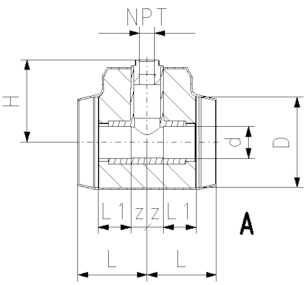
**COOL-FIT 4.0 Installation fitting type 313 NPT  
d32-d225**

**Model:**

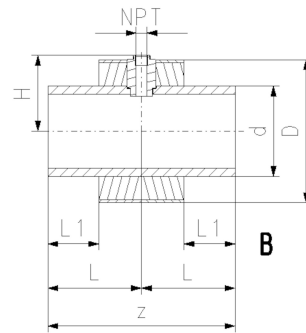
- Pre-insulated PE100 SDR11 ANSI
- Insulation made from GF HE foam
- Impact resistant. Color: black
- With threaded branch for sensors (i.e temperature, pressure)
- A: Electrofusion Fitting with integrated sealing lip, for a water and vapour tight sealing
- B: Spigot Fitting with free end



**B**



**A**



**B**

d (mm)	d/D (mm)	Thread Type	Size (inch)	DN (mm)	SDR	PN (bar)	Code	Weight (kg)
32	32/90	NPT	½	25	11	16	<b>738 313 508</b>	0.169
40	40/110	NPT	½	32	11	16	<b>738 313 509</b>	0.267
40	40/110	NPT	¾	32	11	16	<b>738 313 559</b>	0.269
50	50/110	NPT	½	40	11	16	<b>738 313 510</b>	0.354
50	50/110	NPT	¾	40	11	16	<b>738 313 560</b>	0.356
63	63/125	NPT	½	50	11	16	<b>738 313 511</b>	0.537
63	63/125	NPT	¾	50	11	16	<b>738 313 561</b>	0.539
75	75/140	NPT	½	65	11	16	<b>738 313 512</b>	0.773
75	75/140	NPT	¾	65	11	16	<b>738 313 562</b>	0.774
90	90/160	NPT	½	80	11	16	<b>738 313 513</b>	1.164
90	90/160	NPT	¾	80	11	16	<b>738 313 563</b>	1.165
110	110/180	NPT	½	100	11	16	<b>738 313 514</b>	1.944
110	110/180	NPT	¾	100	11	16	<b>738 313 564</b>	1.944
140	140/225	NPT	½	125	11	16	<b>738 313 516</b>	3.974
140	140/225	NPT	¾	125	11	16	<b>738 313 566</b>	3.964
160	160/250	NPT	½	150	11	16	<b>738 313 517</b>	2.496
160	160/250	NPT	¾	150	11	16	<b>738 313 567</b>	2.489
225	225/315	NPT	½	200	11	16	<b>738 313 520</b>	5.155
225	225/315	NPT	¾	200	11	16	<b>738 313 570</b>	5.146

d (mm)	d/D (mm)	L (mm)	L1 (mm)	z (mm)	H (mm)	Type
32	32/90	79	36	18	95	A
40	40/110	87	40	22	105	A
40	40/110	87	40	22	108	A
50	50/110	94	44	25	107	A
50	50/110	94	44	25	110	A
63	63/125	103	48	30	120	A
63	63/125	103	48	30	123	A
75	75/140	116	55	36	127	A
75	75/140	116	55	36	130	A
90	90/160	130	62	43	139	A
90	90/160	130	62	43	142	A
110	110/180	154	72	57	151	A
110	110/180	154	72	57	154	A
140	140/225	175	84	66	187	A
140	140/225	175	84	66	190	A
160	160/250	165	90	330	134	B
160	160/250	165	90	330	134	B
225	225/315	185	110	370	166	B
225	225/315	185	110	370	169	B

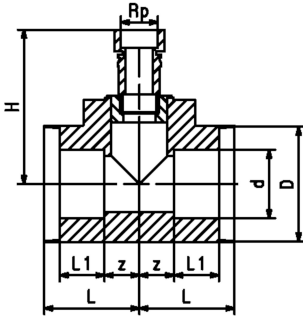
# COOL-FIT 4.0 Transition Fittings



## COOL-FIT 4.0 Transition Tee90° PE/brass With female thread Rp

### Model:

- Pre-insulated PE100 SDR11, metric
- Brass CuZn40Pb2 with female thread Rp
- Insulation made from GF HE foam
- Impact resistant. Color: black
- Electrofusion Fitting with integrated sealing lip, for a water and vapour tight sealing



d (mm)	d/D (mm)	Thread Type	Size (inch)	DN (mm)	SDR	PN (bar)	Code	Weight (kg)
63	63/125	Rp	2	50	11	16	<b>738 953 061</b>	1.700
75	75/140	Rp	2	65	11	16	<b>738 953 062</b>	1.900
90	90/160	Rp	2	80	11	16	<b>738 953 063</b>	2.300
110	110/180	Rp	2	100	11	16	<b>738 953 064</b>	3.100
160	160/250	Rp	2	150	11	16	<b>738 953 067</b>	5.450
225	225/315	Rp	2	200	11	16	<b>738 953 070</b>	18.100
40	40/110	Rp	1	32	11	16	<b>738 953 159</b>	0.500
50	50/110	Rp	1	40	11	16	<b>738 953 160</b>	0.588
63	63/125	Rp	1	50	11	16	<b>738 953 161</b>	0.760
75	75/140	Rp	1	65	11	16	<b>738 953 162</b>	1.246
90	90/160	Rp	1	80	11	16	<b>738 953 163</b>	1.650
110	110/180	Rp	1	100	11	16	<b>738 953 164</b>	2.750
160	160/250	Rp	1	150	11	16	<b>738 953 167</b>	4.450
225	225/315	Rp	1	200	11	16	<b>738 953 170</b>	17.100

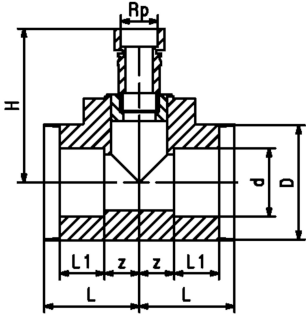
d (mm)	d/D (mm)	L (mm)	L1 (mm)	z (mm)	H (mm)
63	63/125	103	48	30	222
75	75/140	116	55	36	226
90	90/160	130	62	43	241
110	110/180	154	72	57	251
160	160/250	165	90	330	289
225	225/315	185	110	370	446
40	40/110	87	40	22	173
50	50/110	94	44	25	173
63	63/125	103	48	30	186
75	75/140	116	55	36	193
90	90/160	130	62	43	205
110	110/180	154	72	57	215
160	160/250	165	90	330	253
225	225/315	185	110	370	444



**COOL-FIT 4.0 Transition Tee90° PE/stainless steel  
With female thread Rp**

**Model:**

- Pre-insulated PE100 SDR11, metric
- Stainless steel 1.4404 / 316L with female thread Rp
- Insulation made from GF HE foam
- Impact resistant. Color: black
- Electrofusion Fitting with integrated sealing lip, for a water and vapour tight sealing



d (mm)	d/D (mm)	Thread Type	Size (inch)	DN (mm)	SDR	PN (bar)	Code	Weight (kg)
63	63/125	Rp	2	50	11	16	<b>738 943 061</b>	1.700
75	75/140	Rp	2	65	11	16	<b>738 943 062</b>	2.150
90	90/160	Rp	2	80	11	16	<b>738 943 063</b>	2.530
110	110/180	Rp	2	100	11	16	<b>738 943 064</b>	3.650
160	160/250	Rp	2	150	11	16	<b>738 943 067</b>	5.380
225	225/315	Rp	2	200	11	16	<b>738 943 070</b>	18.100
40	40/110	Rp	1	32	11	16	<b>738 943 159</b>	0.490
50	50/110	Rp	1	40	11	16	<b>738 943 160</b>	0.575
63	63/125	Rp	1	50	11	16	<b>738 943 161</b>	0.747
75	75/140	Rp	1	65	11	16	<b>738 943 162</b>	1.233
90	90/160	Rp	1	80	11	16	<b>738 943 163</b>	1.633
110	110/180	Rp	1	100	11	16	<b>738 943 164</b>	2.733
160	160/250	Rp	1	150	11	16	<b>738 943 167</b>	4.483
225	225/315	Rp	1	200	11	16	<b>738 943 170</b>	17.100

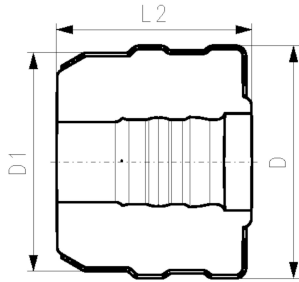
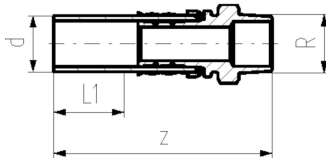
d (mm)	d/D (mm)	L (mm)	L1 (mm)	z (mm)	H (mm)
63	63/125	103	48	30	222
75	75/140	116	55	36	226
90	90/160	130	62	43	241
110	110/180	154	72	57	251
160	160/250	165	90	330	289
225	225/315	185	110	370	446
40	40/110	87	40	22	173
50	50/110	94	44	25	173
63	63/125	103	48	30	186
75	75/140	116	55	36	193
90	90/160	130	62	43	205
110	110/180	154	72	57	215
160	160/250	165	90	330	253
225	225/315	185	110	370	444



**COOL-FIT 4.0 Adaptor fitting PE/stainless steel  
With male thread R**

**Model:**

- Spigot fitting PE100 SDR11, metric with free end
- Stainless steel 1.4404 / 316L with male thread R
- Gasket: O-ring EPDM
- Including Insulation half shells



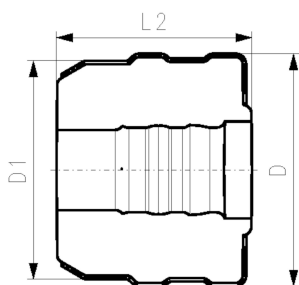
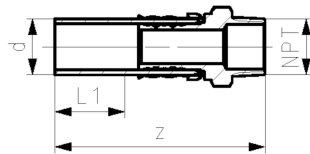
d (mm)	D (mm)	Thread Type	Size (inch)	DN (mm)	SDR	PN (bar)	Code	Weight (kg)	D1 (mm)	L1 (mm)	L2 (mm)	z (mm)
32	103	R	1/2	25	11	16	<b>738 943 508</b>	0.224	90	36	80	130
32	103	R	3/4	25	11	16	<b>738 943 518</b>	0.232	90	36	80	134
32	103	R	1	25	11	16	<b>738 943 528</b>	0.241	90	36	80	134
40	128	R	1 1/4	32	11	16	<b>738 943 509</b>	0.655	110	40	91	156
50	138	R	1 1/2	40	11	16	<b>738 943 510</b>	1.020	110	44	96	168
63	149	R	2	50	11	16	<b>738 943 511</b>	1.458	125	48	103	179



**COOL-FIT 4.0 Adaptor fitting  
PE/stainless steel  
with male thread NPT**

**Model:**

- Spigot fitting PE100 SDR11, ANSI with free end
- Stainless steel 1.4404 / 316L with male thread NPT
- Gasket: O-ring EPDM
- Including insulation half shells



d (mm)	D (mm)	Thread Type	Size (inch)	SDR	PN (bar)	Code	Weight (kg)	D1 (mm)	L1 (mm)	L2 (mm)	z (mm)
32	103	NPT	1/2	11	16	<b>738 943 808</b>	0.224	90	36	80	129
32	103	NPT	3/4	11	16	<b>738 943 818</b>	0.232	90	36	80	133
32	103	NPT	1	11	16	<b>738 943 828</b>	0.241	90	36	80	134
40	128	NPT	1 1/4	11	16	<b>738 943 809</b>	0.655	110	40	91	151
50	138	NPT	1 1/2	11	16	<b>738 943 810</b>	1.021	110	44	96	163
63	149	NPT	2	11	16	<b>738 943 811</b>	1.459	125	48	103	174

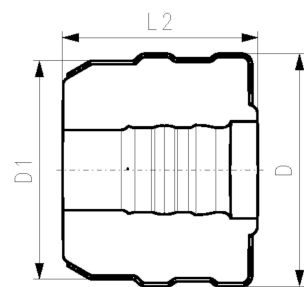
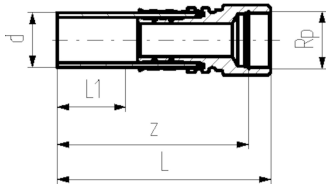


**COOL-FIT 4.0 Adaptor fitting PE/stainless steel  
With female thread Rp**

**Model:**

- Spigot fitting PE100 SDR11, metric with free end
- Stainless steel 1.4404 / 316L with female thread Rp
- Gasket: O-ring EPDM
- Including Insulation half shells

d (mm)	D (mm)	Thread Type	Size (inch)	DN (mm)	SDR	PN (bar)	Code	Weight (kg)
32	104	Rp	½	25	11	16	<b>738 943 008</b>	0.247
32	104	Rp	¾	25	11	16	<b>738 943 018</b>	0.272
32	104	Rp	1	25	11	16	<b>738 943 028</b>	0.297
40	128	Rp	1 ¼	32	11	16	<b>738 943 009</b>	0.683
50	138	Rp	1 ½	40	11	16	<b>738 943 010</b>	0.734
63	149	Rp	2	50	11	16	<b>738 943 011</b>	1.244



D1 (mm)	L (mm)	L1 (mm)	L2 (mm)	z (mm)
90	132	36	101	118
90	132	36	101	116
90	132	36	101	115
110	157	40	91	141
110	157	44	96	128
125	164	48	103	140

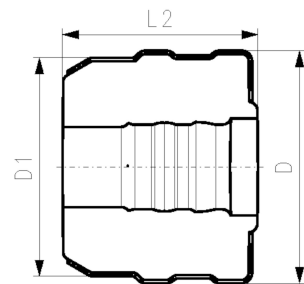
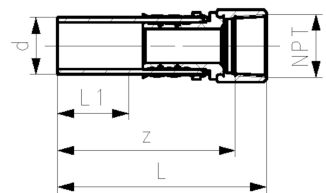


**COOL-FIT 4.0 Adaptor fitting PE/stainless steel  
With female thread NPT**

**Model:**

- Spigot fitting PE100 SDR11, ANSI with free end
- Stainless steel 1.4404 / 316L with female thread NPT
- Gasket: O-ring EPDM
- Including Insulation half shells

d (mm)	D (mm)	Thread Type	Size (inch)	DN (mm)	SDR	PN (bar)	Code	Weight (kg)
32	104	NPT	½	25	11	16	<b>738 943 408</b>	0.247
32	104	NPT	¾	25	11	16	<b>738 943 418</b>	0.272
32	104	NPT	1	25	11	16	<b>738 943 428</b>	0.297
40	128	NPT	1 ¼	32	11	16	<b>738 943 409</b>	0.683
50	138	NPT	1 ½	40	11	16	<b>738 943 410</b>	0.735
63	149	NPT	2	50	11	16	<b>738 943 411</b>	1.245



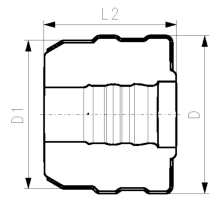
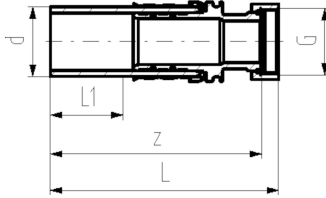
d (mm)	D1 (mm)	L (mm)	L1 (mm)	L2 (mm)	z (mm)
32	90	132	36	101	114
32	90	132	36	101	114
32	90	132	36	101	114
40	110	147	40	91	125
50	110	147	44	96	124
63	125	159	48	103	136



### COOL-FIT 4.0 Adaptor fitting PE/stainless steel With loose union nut G

#### Model:

- Spigot fitting PE100 SDR11, metric with free end
- Stainless steel 1.4404 / 316L with loose union nut G
- Including flat seal EPDM
- Including insulation half shells



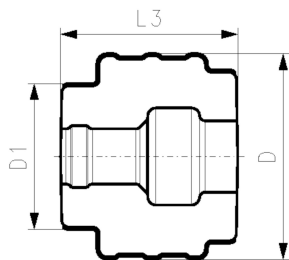
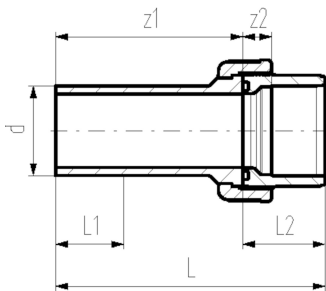
d (mm)	D (mm)	Thread Type	Size (inch)	DN (mm)	SDR	PN (bar)	Code	Weight (kg)
32	104	G	1/2	25	11	16	<b>738 943 308</b>	0.250
32	104	G	3/4	25	11	16	<b>738 943 318</b>	0.264
32	104	G	1	25	11	16	<b>738 943 328</b>	0.296
40	128	G	1 1/4	32	11	16	<b>738 943 309</b>	0.595
40	128	G	1 1/2	32	11	16	<b>738 943 319</b>	0.655
50	138	G	1 1/2	40	11	16	<b>738 943 310</b>	0.820
63	149	G	2	50	11	16	<b>738 943 311</b>	1.307

d (mm)	D (mm)	D1 (mm)	L (mm)	L1 (mm)	L2 (mm)	z (mm)
32	104	90	133	36	101	126
32	104	90	135	36	101	129
32	104	90	135	36	101	129
40	128	110	155	40	91	148
40	128	110	157	40	91	148
50	138	110	164	44	96	154
63	149	125	186	48	103	170

### COOL-FIT 4.0 Adaptor union PE/ABS

#### Model:

- Union bush: ABS Solvent cement socket
- Union End: Spigot fitting PE100 SDR11, metric with free end
- Gasket: O-ring EPDM Nr. 748 410 008-014
- Union Nut: ABS
- Including insulation half shells



d (mm)	D (mm)	DN (mm)	SDR	PN (bar)	Code	Weight (kg)	D1 (mm)	L (mm)	L1 (mm)	L2 (mm)	L3 (mm)	z1 (mm)	z2 (mm)
32	134	25	11	10	<b>738 513 708</b>	0.169	90	137	36	33	109	104	11
40	143	32	11	10	<b>738 513 709</b>	0.256	110	156	40	39	126	117	13
50	154	40	11	10	<b>738 513 710</b>	0.334	110	169	44	46	135	123	15
63	172	50	11	10	<b>738 513 711</b>	0.522	125	190	48	58	152	132	21
75	210	65	11	10	<b>738 513 712</b>	0.996	140	211	55	62	170	149	18
90	233	80	11	10	<b>738 513 713</b>	1.336	160	215	62	69	167	146	18
110	263	100	11	10	<b>738 513 714</b>	1.900	180	235	72	72	177	163	11

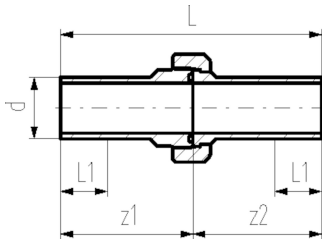




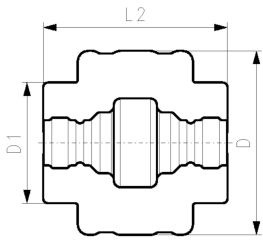
### COOL-FIT 4.0 Union PE/PE

**Model:**

- Union bush: Spigot fitting PE100 SDR11, metric with free end
- Union End: Spigot fitting PE100 SDR11, metric with free end
- Gasket: O-ring EPDM Nr. 748 410 008-014
- Union Nut: PEGF25
- Including insulation half shells



d (mm)	D (mm)	DN (mm)	SDR	PN (bar)	Code	Weight (kg)	D1 (mm)	L (mm)	L1 (mm)	L2 (mm)	z1 (mm)	z2 (mm)
32	139	25	11	16	<b>738 513 608</b>	0.223	90	211	36	139	107	104
40	153	32	11	16	<b>738 513 609</b>	0.363	110	234	40	158	118	116
50	165	40	11	16	<b>738 513 610</b>	0.468	110	247	44	163	124	123
63	185	50	11	16	<b>738 513 611</b>	0.584	125	268	48	176	136	132



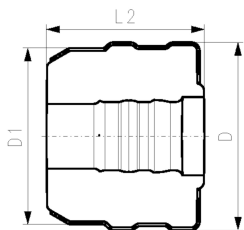
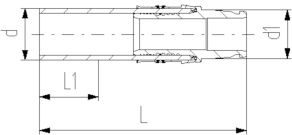
### COOL-FIT 4.0 Adaptor fitting PE/iFIT

**Model:**

- Spigot fitting PE100 SDR11, metric with free end
- iFIT module stainless steel 1.4404 / 316L
- Including insulation half shells



d (mm)	D (mm)	DN (mm)	SDR	PN (bar)	Code	Weight (kg)	d1 (mm)	D1 (mm)	L (mm)	L1 (mm)	L2 (mm)
32	103	25	11	10	<b>738 943 108</b>	0.256	25-32	90	132	36	80

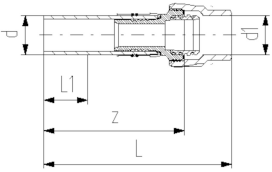




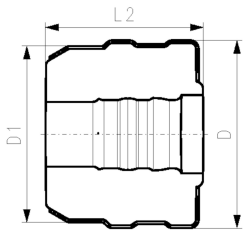
### COOL-FIT 4.0 Adaptor fitting PE/Sanipex MT

**Model:**

- Spigot fitting PE100 SDR11, metric with free end
- Sanipex MT adaptor brass CuZn40Pb2
- Including insulation half shells



d	D	DN	SDR	PN	Code	Weight	d1	D1	L	L1	L2	z
(mm)	(mm)	(mm)		(bar)		(kg)	(mm)	(mm)	(mm)	(mm)	(mm)	(mm)
32	103	25	11	10	<b>738 953 118</b>	0.476	32	90	174	36	101	135

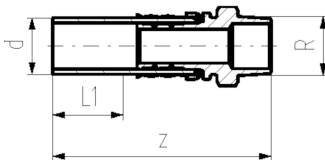


### COOL-FIT 2.0/4.0 Adaptor fitting PE/stainless steel With male thread R



**Model:**

- Spigot fitting PE100 SDR11, metric with free end
- Stainless steel 1.4404 / 316L with male thread R
- Gasket: O-ring EPDM



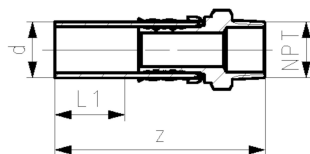
d	Thread Type	Size	DN	SDR	PN	Code	Weight	L1	z
(mm)		(inch)	(mm)		(bar)		(kg)	(mm)	(mm)
32	R	½	25	11	16	<b>738 940 508</b>	0.179	36	130
32	R	¾	25	11	16	<b>738 940 518</b>	0.187	36	134
32	R	1	25	11	16	<b>738 940 528</b>	0.196	36	134
40	R	1 ¼	32	11	16	<b>738 940 509</b>	0.572	40	156
50	R	1 ½	40	11	16	<b>738 940 510</b>	0.927	44	168
63	R	2	50	11	16	<b>738 940 511</b>	1.347	48	179

### COOL-FIT 2.0/4.0 Adaptor fitting PE/stainless steel with male thread NPT



**Model:**

- Spigot fitting PE100 SDR11, ANSI with free end
- Stainless steel 1.4404 / 316L with male thread NPT
- Gasket: O-ring EPDM



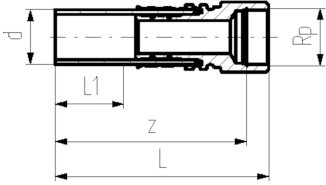
d	Thread Type	Size	SDR	PN	Code	Weight	L	L1	z
(mm)		(inch)		(bar)		(kg)	(mm)	(mm)	(mm)
32	NPT	½	11	16	<b>738 940 808</b>	0.179	132	36	118
32	NPT	¾	11	16	<b>738 940 818</b>	0.187	132	36	116
32	NPT	1	11	16	<b>738 940 828</b>	0.196	132	36	115
40	NPT	1 ¼	11	16	<b>738 940 809</b>	0.572	157	40	141
50	NPT	1 ½	11	16	<b>738 940 810</b>	0.927	150	44	128
63	NPT	2	11	16	<b>738 940 811</b>	1.347	164	48	140

**COOL-FIT 2.0/4.0 Adaptor fitting PE/stainless steel  
With female thread Rp**



**Model:**

- Spigot fitting PE100 SDR11, metric with free end
- Stainless steel 1.4404 / 316L with female thread Rp
- Gasket: O-ring EPDM



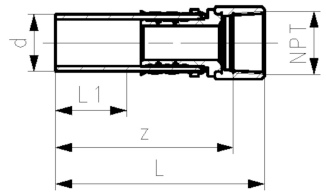
d (mm)	Thread Type	Size (inch)	DN (mm)	SDR	PN (bar)	Code	Weight (kg)	L (mm)	L1 (mm)	z (mm)
32	Rp	½	25	11	16	<b>738 940 008</b>	0.183	132	36	118
32	Rp	¾	25	11	16	<b>738 940 018</b>	0.208	132	36	116
32	Rp	1	25	11	16	<b>738 940 028</b>	0.233	132	36	115
40	Rp	1 ¼	32	11	16	<b>738 940 009</b>	0.600	157	40	141
50	Rp	1 ½	40	11	16	<b>738 940 010</b>	0.641	150	44	128
63	Rp	2	50	11	16	<b>738 940 011</b>	1.133	164	48	140

**COOL-FIT 2.0/4.0 Adaptor fitting PE/stainless steel  
With female thread NPT**



**Model:**

- Spigot fitting PE100 SDR11, ANSI with free end
- Stainless steel 1.4404 / 316L with female thread NPT
- Gasket: O-ring EPDM



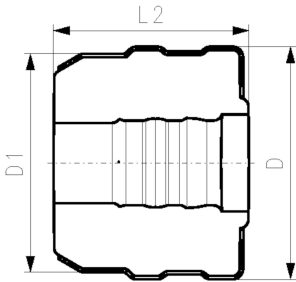
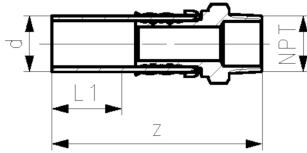
d (mm)	Thread Type	Size (inch)	DN (mm)	SDR	PN (bar)	Code	Weight (kg)	L (mm)	L1 (mm)	z (mm)
32	NPT	½	25	11	16	<b>738 940 408</b>	0.183	132	36	114
32	NPT	¾	25	11	16	<b>738 940 418</b>	0.208	132	36	114
32	NPT	1	25	11	16	<b>738 940 428</b>	0.233	132	36	114
40	NPT	1 ¼	32	11	16	<b>738 940 409</b>	0.600	147	40	125
50	NPT	1 ½	40	11	16	<b>738 940 410</b>	0.641	147	44	124
63	NPT	2	50	11	16	<b>738 940 411</b>	1.133	159	48	136



**COOL-FIT 4.0 Adaptor fitting**  
PE/stainless steel  
with male thread NPT

**Model:**

- Spigot fitting PE100 SDR11, ANSI with free end
- Stainless steel 1.4404 / 316L with male thread NPT
- Gasket: O-ring EPDM
- Including insulation half shells

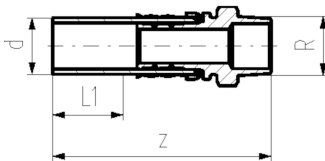


d (mm)	D (mm)	Thread Type	Size (inch)	SDR	PN (bar)	Code	Weight (kg)	D1 (mm)	L1 (mm)	L2 (mm)	z (mm)
32	103	NPT	½	11	16	<b>738 943 808</b>	0.224	90	36	80	129
32	103	NPT	¾	11	16	<b>738 943 818</b>	0.232	90	36	80	133
32	103	NPT	1	11	16	<b>738 943 828</b>	0.241	90	36	80	134
40	128	NPT	1 ¼	11	16	<b>738 943 809</b>	0.655	110	40	91	151
50	138	NPT	1 ½	11	16	<b>738 943 810</b>	1.021	110	44	96	163
63	149	NPT	2	11	16	<b>738 943 811</b>	1.459	125	48	103	174

**COOL-FIT 2.0/4.0 Adaptor fitting PE/brass**  
With male thread R

**Model:**

- Spigot fitting PE100 SDR11, metric with free end
- Brass CuZn40Pb2 with male thread R
- Gasket: O-ring EPDM



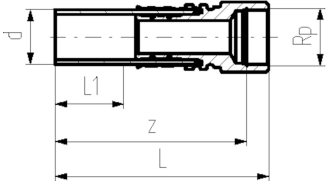
d (mm)	Thread Type	Size (inch)	DN (mm)	SDR	PN (bar)	Code	Weight (kg)	L1 (mm)	z (mm)
32	R	½	25	11	16	<b>738 950 508</b>	0.188	36	130
32	R	¾	25	11	16	<b>738 950 518</b>	0.196	36	134
32	R	1	25	11	16	<b>738 950 528</b>	0.206	36	134
40	R	1 ¼	32	11	16	<b>738 950 519</b>	0.608	40	156
50	R	1 ½	40	11	16	<b>738 950 510</b>	0.986	44	168
63	R	2	50	11	16	<b>738 950 511</b>	1.433	48	179

**COOL-FIT 2.0/4.0 Adaptor fitting PE/brass  
With female thread Rp**



**Model:**

- Spigot fitting PE100 SDR11, metric with free end
- Brass CuZn40Pb2 with female tread Rp
- Gasket: O-ring EPDM



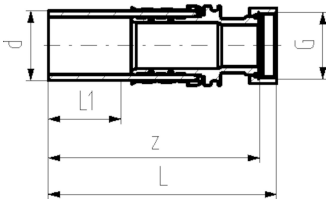
d (mm)	Thread Type	Size (inch)	DN (mm)	SDR	PN (bar)	Code	Weight (kg)	L (mm)	L1 (mm)	z (mm)
32	Rp	½	25	11	16	<b>738 950 008</b>	0.192	132	36	118
32	Rp	¾	25	11	16	<b>738 950 018</b>	0.219	132	36	116
32	Rp	1	25	11	16	<b>738 950 028</b>	0.246	132	36	115
40	Rp	1 ¼	32	11	16	<b>738 950 019</b>	0.641	157	40	141
50	Rp	1 ½	40	11	16	<b>738 950 010</b>	0.684	150	44	128
63	Rp	2	50	11	16	<b>738 950 011</b>	1.209	164	48	140

**COOL-FIT 2.0/4.0 Adaptor fitting PE/brass  
With loose union nut G**



**Model:**

- Spigot fitting PE100 SDR11, metric with free end
- Brass CuZn40Pb2 with loose union nut G
- Including flat seal EPDM



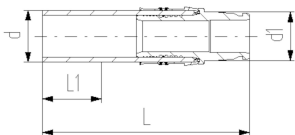
d (mm)	Thread Type	Size (inch)	DN (mm)	SDR	PN (bar)	Code	Weight (kg)	L (mm)	L1 (mm)	z (mm)
32	G	¾	25	11	16	<b>738 950 318</b>	0.206	135	36	129
32	G	1	25	11	16	<b>738 950 328</b>	0.244	135	36	129
32	G	1 ¼	25	11	16	<b>738 950 338</b>	0.301	137	36	131
40	G	1 ¼	32	11	16	<b>738 950 309</b>	0.543	155	40	148
40	G	1 ½	32	11	16	<b>738 950 319</b>	0.607	157	40	148
50	G	1 ½	40	11	16	<b>738 950 310</b>	0.769	164	44	154
63	G	2	50	11	16	<b>738 950 311</b>	1.268	186	48	170

**COOL-FIT 2.0/4.0 Adaptor Fitting PE/iFIT**



**Model:**

- Spigot fitting PE100 SDR11, metric with free end
- iFIT module stainless steel 1.4404 / 316L



d (mm)	DN (mm)	SDR	PN (bar)	Code	Weight (kg)	L (mm)	L1 (mm)	L2 (mm)
32	25	11	10	<b>738 940 108</b>	0.211	132	36	80

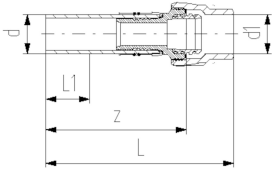
### COOL-FIT 2.0/4.0 Adaptor fitting PE/Sanipex MT



#### Model:

- Spigot fitting PE100 SDR11, metric with free end
- Sanipex MT adaptor brass CuZn40Pb2

d	DN	SDR	PN	Code	Weight	d1	L	L1	L2	z
(mm)	(mm)		(bar)		(kg)	(mm)	(mm)	(mm)	(mm)	(mm)
32	25	11	10	<b>738 950 118</b>	0.412	32	174	36	101	135



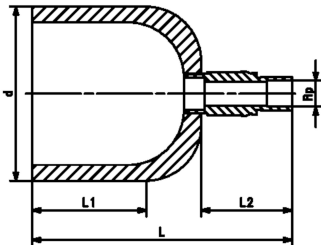
### COOL-FIT 2.0/4.0 Transition cap PE/brass With female thread Rp

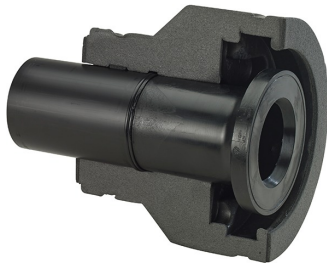


#### Model:

- Spigot fitting PE100 SDR11, metric with free end
- Brass CuZn40Pb2 with female tread Rp
- Gasket: O-ring EPDM

d	DN	SDR	PN	Code	Weight	Thread	Size	L	L1	L2
(mm)	(mm)		(bar)		(kg)		(inch)	(mm)	(mm)	(mm)
32	25	11	16	<b>738 960 008</b>	0.192	Rp	½	107	36	69
40	32	11	16	<b>738 960 009</b>	0.210	Rp	½	113	40	73
50	40	11	16	<b>738 960 010</b>	0.250	Rp	½	117	44	73
63	50	11	16	<b>738 960 011</b>	0.300	Rp	½	121	48	73
75	65	11	16	<b>738 960 012</b>	0.400	Rp	½	128	55	73
90	80	11	16	<b>738 960 013</b>	0.476	Rp	½	135	62	73
110	100	11	16	<b>738 960 014</b>	0.695	Rp	½	145	72	73
140	125	11	16	<b>738 960 016</b>	0.954	Rp	½	209	84	73
160	150	11	16	<b>738 960 017</b>	1.300	Rp	½	193	90	73
225	200	11	16	<b>738 960 020</b>	2.532	Rp	½	221	110	73





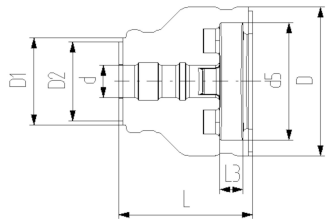
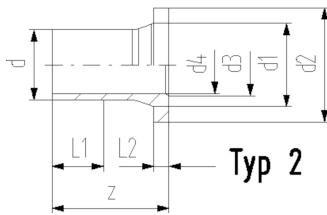
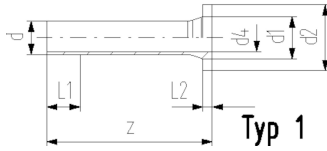
## COOL-FIT 2.0/4.0 Flange adaptor

### Model:

- PE100 SDR11, metric
- Suitable for flange connections to metric and/or ANSI/ASME B16.5
- Gasket: Profile flange gasket NBR No. 45 44 07, EPDM No. 48 44 07
- Type 1 without chamfer, Type 2 with chamfer
- Separate Fittings type A needed for joining

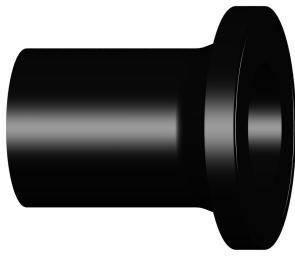
### Note:

Backing ring and gasket not included



d (mm)	D (mm)	d1 (mm)	D1 (mm)	d2 (mm)	D2 (mm)	DN (mm)	SDR	PN	Code	Weight (kg)
32	135	40	90	68		25	11	16	<b>738 710 008</b>	0.051
32	135	40	90	63	63	25	11	16	<b>738 710 108</b>	0.051
40	170	50	110	78	90	32	11	16	<b>738 710 009</b>	0.075
40	170	50	110	73	73	32	11	16	<b>738 710 109</b>	0.075
50	180	61	110	88	90	40	11	16	<b>738 710 010</b>	0.630
50	180	61	110	82	82	40	11	16	<b>738 710 110</b>	0.110
63	200	75	125	102	110	50	11	16	<b>738 710 011</b>	0.173
75	220	89	140	122	125	65	11	16	<b>738 710 012</b>	1.210
90	240	105	160	138	140	80	11	16	<b>738 710 013</b>	1.193
90	240	105	160	133	133	80	11	16	<b>738 710 113</b>	0.439
110	270	125	180	158	160	100	11	16	<b>738 710 014</b>	1.574
140	300	155	225	188	200	125	11	16	<b>738 710 016</b>	2.412
160	358	174	259	213	213	150	11	16	<b>738 710 017</b>	1.748
225	423	233	325	268	268	200	11	16	<b>738 710 020</b>	10.440

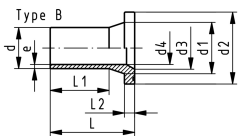
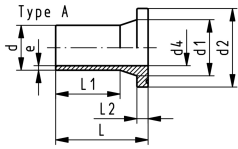
d (mm)	D (mm)	L (mm)	L1 (mm)	L2 (mm)	L3 (mm)	z (mm)	d3 (mm)	d4 (mm)	d5 (mm)	Type	Standard
32	135	162	36	10	26	190		26	121	1	Metric
32	135	162	36	10	26	190		26	121	1	ANSI
40	170	165	40	11	28	197		32	146	1	Metric
40	170	165	40	11	28	197		32	146	1	ANSI
50	180	178	44	12	30	214		40	156	1	Metric
50	180	178	44	12	30	214		40	156	1	ANSI
63	200	230	48	14	32	270		51	171	1	Metric, ANSI
75	220	232	55	16	34	279		61	191	2	Metric, ANSI
90	240	245	62	17	35	299	78	73	206	2	Metric
90	240	245	62	17	35	299	78	73	206	2	ANSI
110	270	254	72	18	36	320	100	90	235	2	Metric, ANSI
140	300	299	84	25	38	383	127	127	256	2	Metric, ANSI
160	358	332	90	25	34	412	151	131	295	2	Metric, ANSI
225	423	383	110	32	37	483	209	184	354	2	Metric, ANSI



**ELGEF Plus Flange adaptor PE100**  
**d50 - 1000mm / SDR17 / long version / Combined jointing face: flat and serrated**

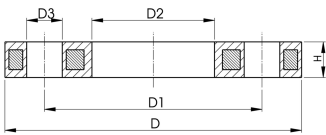
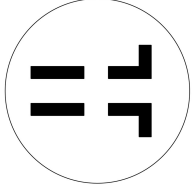
**Model:**

- For IR, butt and electrofusion welding according to DVS 2207
  - Type A: without chamfer
  - Type B: with chamfer
  - Suitable for plastic butterfly valves type **567/578/565** up to DN250. ecoFit Flange adaptor SDR17 required for DN300 and above
  - Suitable for metal butterfly valves type **038/039/044/065** up to DN250. ecoFit Flange adaptor SDR17 is required for DN300 and above
  - Profile seal d50-d1000: NBR, EPDM, FKM
  - Flat gasket d50-d315: EPDM, FKM
  - Pressure rating: 10 bar water / 5 bar gas
  - Please refer to the Online Tool: Perfect Flange Connection - GF Piping Systems (gfps.com)
- \* Machined / extended



d (mm)	DN (mm)	Code	Weight (kg)	d1 (mm)	d2 (mm)	d3 (mm)	d4 (mm)	L (mm)	L1 (mm)	L2 (mm)	e (mm)	Type
50	40	<b>753 800 085</b>	0.107	61	88		44	90	62	12	3.0	A
63	50	<b>753 800 086</b>	0.168	75	102		55	106	70	14	3.8	A
75	65	<b>753 800 087</b>	0.260	89	122		66	130	75	16	4.5	A
90	80	<b>753 800 088</b>	0.367	105	138		79	140	103	17	5.4	A
110	100	<b>753 800 089</b>	0.571	125	158		96	160	117	18	6.6	A
125	100	<b>753 800 090</b>	0.684	132	158	114	110	170	125	25	7.4	B
140	125	<b>753 800 091</b>	1.035	155	188	127	123	200	147	25	8.3	B
160	150	<b>753 800 092</b>	1.342	175	212	151	141	200	147	25	9.5	B
180	150	<b>753 800 093</b>	1.469	180	212		158	200	170	30	10.7	A
200	200	<b>753 800 094</b>	2.212	232	268	203	176	200	128	32	11.9	B
225	200	<b>753 800 095</b>	2.456	235	268	210	198	200	138	32	13.4	B
250	250	<b>753 800 096</b>	3.500	285	320	245	220	220	148	35	14.8	B
280	250	<b>753 800 097</b>	3.780	291	320	265	246	230	154	35	16.6	B
315	300	<b>753 800 098</b>	5.470	335	370	300	277	242	166	36	18.7	B
355	350	<b>753 800 299</b>	7.100	373	430	346	310	260	170	33	21.1	B
400	400	<b>753 800 300</b>	9.600	427	482	395	350	282	185	36	23.7	B
450	500	<b>753 800 301</b>	16.400	514	585		400	316	205	46	26.7	A
500	500	<b>753 800 302</b>	18.500	530	585		400	337	220	46	29.7	A
560	600	<b>753 800 303</b>	26.940	616	685		493	370	250	50	33.2	A
630	600	<b>753 800 304</b>	44.260	644	685		555	390	270	50	37.4	A
*	710	<b>753 800 105</b>	39.376	737	800		626	425	325	50	42.1	A
*	800	<b>753 800 106</b>	50.759	840	905		705	465	360	52	47.4	A
*	900	<b>753 800 107</b>	64.202	944	1005		793	490	360	55	53.3	A
*	1000	<b>753 800 108</b>	79.495	1047	1110		881	530	395	60	59.3	A





## Flanges PP-Steel

### Model:

- Material: PP (30% glass-fibre reinforced) with steel ring
- Metric: ISO 7005, EN 1092, ISO 9624
- ASME: ANSI/ASME B 16.5 class 150, ASTM D2024, BS 1560, BS EN 1759
- Special flange adapter ANSI for d25 - d50 and d90 required

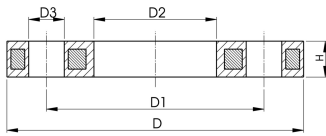
AL: number of holes

<sup>1)</sup> FM 1613 approved – 15 bar

<sup>2)</sup> Profiled loose flange

	d (mm)	DN (mm)	D (mm)	PN (bar)	Standard	Bolt / circle	Design	Code	Weight (kg)
	20	15	95	16	Metric	PN10	Butt/Socket	<b>727 700 206</b>	0.216
	20	15	95	16	ASME	class 150	Butt/Socket	<b>727 701 206</b>	0.213
	25	20	105	16	Metric	PN10	Butt/Socket	<b>727 700 207</b>	0.279
	25	20	105	16	ASME	class 150	Butt/Socket	<b>727 701 207</b>	0.260
	32	25	115	16	Metric	PN10	Butt/Socket	<b>727 700 208</b>	0.429
	32	25	115	16	ASME	class 150	Butt/Socket	<b>727 701 208</b>	0.416
	40	32	140	16	Metric	PN10	Butt/Socket	<b>727 700 209</b>	0.621
	40	32	140	16	ASME	class 150	Butt/Socket	<b>727 701 209</b>	0.730
	50	40	150	16	Metric	PN10	Butt/Socket	<b>727 700 210</b>	0.722
	50	40	150	16	ASME	class 150	Butt/Socket	<b>727 701 210</b>	0.809
	63	50	165	16	Metric	PN10	Butt/Socket	<b>727 700 211</b>	0.900
	63	50	165	16	ASME	class 150	Butt/Socket	<b>727 701 211</b>	0.866
	75	65	185	16	Metric	PN10	Butt/Socket	<b>727 700 212</b>	1.110
	75	65	185	16	ASME	class 150	Butt/Socket	<b>727 701 212</b>	1.117
1	90	80	200	16	Metric	PN10	Butt	<b>724 700 313</b>	1.390
	90	80	200	16	Metric	PN10	Socket	<b>727 700 213</b>	1.369
	90	80	200	16	Metric	PN10	Butt	<b>727 700 313</b>	1.390
	90	80	200	16	ASME	class 150	Socket	<b>727 701 213</b>	1.492
	90	80	200	16	ASME	class 150	Butt	<b>727 701 313</b>	1.499
1	110	100	223	16	Metric	PN10	Butt	<b>724 700 314</b>	1.407
	110	100	220	16	Metric	PN10	Socket	<b>727 700 214</b>	1.522
	110	100	220	16	Metric	PN10	Butt	<b>727 700 314</b>	1.407
	110	100	229	16	ASME	class 150	Socket	<b>727 701 214</b>	1.695
	110	100	229	16	ASME	class 150	Butt	<b>727 701 314</b>	1.739
1	125	100	223	16	Metric	PN10	Butt	<b>724 700 315</b>	1.408
	125	100	220	16	Metric	PN10	Butt	<b>727 700 315</b>	1.408
	125	125	250	16	Metric	PN10	Socket	<b>727 700 815</b>	2.475
1	140	125	250	16	Metric	PN10	Butt	<b>724 700 316</b>	2.300
	140	125	250	16	Metric	PN10	Butt	<b>727 700 716</b>	2.318
	140	125	250	16	Metric	PN10	Socket	<b>727 700 816</b>	2.033
1	160	150	285	16	Metric	PN10	Butt	<b>724 700 317</b>	3.500
	160	150	285	16	Metric/ASME	PN10/ class 150	Butt	<b>727 700 717</b>	3.491
	160	150	285	16	Metric/ASME	PN10/ class 150	Socket	<b>727 700 817</b>	3.167
1	180	150	285	16	Metric	PN10	Butt	<b>724 700 318</b>	3.100
	180	150	285	16	Metric	PN10	Butt	<b>727 700 718</b>	3.108
1, 2	200	200	344	16	Metric	PN16	Butt	<b>724 700 319</b>	3.549
	200	200	340	16	Metric/ASME	PN10/ class 150	Butt	<b>727 700 719</b>	5.600
	200	200	340	16	Metric/ASME	PN10/ class 150	Socket	<b>727 700 819</b>	6.143
1, 2	225	200	344	16	Metric	PN16	Butt	<b>724 700 320</b>	3.380
	225	200	340	16	Metric/ASME	PN10/ class 150	Butt	<b>727 700 720</b>	5.533
	225	200	340	16	Metric/ASME	PN10/ class 150	Socket	<b>727 700 820</b>	4.448
1, 2	250	250	410	16	Metric	PN16	Butt	<b>724 700 321</b>	6.390
	250	225	395	16	Metric	PN10	Socket	<b>727 700 031</b>	8.340
	250	250	395	16	Metric	PN10	Butt	<b>727 700 721</b>	6.632
	250	250	395	16	Metric	PN10	Socket	<b>727 700 821</b>	7.179
1, 2	280	250	410	16	Metric	PN16	Butt	<b>724 700 322</b>	6.310
	280	250	395	16	Metric	PN10	Butt	<b>727 700 722</b>	6.573
	280	250	395	16	Metric	PN10	Socket	<b>727 700 822</b>	5.547
1, 2	315	300	455	16	Metric	PN16	Butt	<b>724 700 323</b>	9.740

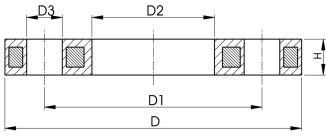
table continued on the next page



	<b>d</b> (mm)	<b>DN</b> (mm)	<b>D</b> (mm)	<b>PN</b> (bar)	<b>Standard</b>	<b>Bolt / circle</b>	<b>Design</b>	<b>Code</b>	<b>Weight</b> (kg)
	315	300	445	16	Metric	PN10	Butt	<b>727 700 723</b>	7.903
	315	300	445	16	Metric	PN10	Socket	<b>727 700 823</b>	6.980
2	315	300	483	10	ASME	class 150	Butt	<b>727 701 322</b>	11.800
1, 2	355	350	521	16	Metric	PN16	Butt	<b>724 700 324</b>	15.203
	355	350	515	16	Metric	PN10	Butt	<b>727 700 724</b>	14.587
	355	350	515	16	Metric	PN10	Socket	<b>727 700 824</b>	12.465
2	355	350	540	10	ASME	class 150	Butt	<b>727 701 323</b>	17.900
1, 2	400	400	582	16	Metric	PN16	Butt	<b>724 700 325</b>	20.600
	400	400	574	16	Metric	PN10	Butt	<b>727 700 725</b>	20.034
	400	400	574	16	Metric	PN10	Socket	<b>727 700 825</b>	17.607
2	400	400	597	10	ASME	class 150	Butt	<b>727 701 324</b>	24.500
1, 2	450	500	685	10	Metric	PN10	Butt	<b>724 700 426</b>	25.600
1, 2	500	500	685	10	Metric	PN10	Butt	<b>724 700 427</b>	21.061
2	560	600	796	10	Metric	PN10	Butt	<b>724 700 428</b>	35.000
2	630	600	800	10	Metric	PN10	Butt	<b>724 700 429</b>	28.500
2	710	700	912	6	Metric	PN10	Butt	<b>724 700 430</b>	25.500
2	800	800	1026	6	Metric	PN10	Butt	<b>724 700 431</b>	39.300
2	900	900	1129	6	Metric	PN10	Butt	<b>724 700 432</b>	48.500
2	250	250	406	10	ASME	class 150	Butt	<b>727 701 321</b>	6.000
2	450	500	712	10	ASME	class 150	Butt	<b>727 701 325</b>	33.600

	<b>d</b> (mm)	<b>DN</b> (mm)	<b>D1</b> (mm)	<b>D2</b> (mm)	<b>D3</b> (mm)	<b>H max.</b> (mm)	<b>AL</b>	<b>SC</b>
	20	15	65	28	14	12	4	M12
	20	15	60	28	16	12	4	M12
	25	20	75	34	14	12	4	M12
	25	20	70	34	16	12	4	M12
	32	25	85	42	14	16	4	M12
	32	25	79	42	16	16	4	M12
	40	32	100	51	18	16	4	M16
	40	32	89	51	16	16	4	M16
	50	40	110	62	18	20	4	M16
	50	40	98	62	16	18	4	M16
	63	50	125	78	18	20	4	M16
	63	50	121	78	19	18	4	M16
	75	65	145	92	18	20	4	M16
	75	65	140	92	19	18	4	M16
1	90	80	160	108	18	20	8	M16
	90	80	160	110	18	20	8	M16
	90	80	160	108	18	20	8	M16
	90	80	152	110	19	20	4	M16
	90	80	152	108	19	20	4	M16
1	110	100	180	128	18	20	8	M16
	110	100	180	133	18	20	8	M16
	110	100	180	128	18	20	8	M16
	110	100	190	133	19	20	8	M16
	110	100	190	128	19	20	8	M16
1	125	100	180	135	18	20	8	M16
	125	100	180	135	18	20	8	M16
	125	125	210	150	18	26	8	M16
1	140	125	210	158	18	24	8	M16
	140	125	210	158	18	24	8	M16
	140	125	210	167	18	26	8	M16
1	160	150	240	178	22	28	8	M20
	160	150	240	178	22	24	8	M20
	160	150	240	190	22	26	8	M20
1	180	150	240	188	22	28	8	M20
	180	150	240	188	22	24	8	M20
1, 2	200	200	295	235	22	31	12	M20
	200	200	295	235	22	27	8	M20
	200	200	295	226	22	29	8	M20
1, 2	225	200	295	238	22	31	12	M20
	225	200	295	238	22	27	8	M20

table continued on the next page



	d (mm)	DN (mm)	D1 (mm)	D2 (mm)	D3 (mm)	H max. (mm)	AL	SC
	225	200	295	250	22	29	8	M20
1, 2	250	250	355	288	26	35	12	M24
	250	225	325	277	22	32	8	M20
	250	250	350	288	22	30	12	M20
	250	250	350	277	22	32	12	M20
1, 2	280	250	355	294	26	36	12	M24
	280	250	350	294	22	30	12	M20
	280	250	350	310	22	32	12	M20
1, 2	315	300	410	338	26	43	12	M24
	315	300	400	338	22	34	12	M20
	315	300	400	348	22	36	12	M20
2	315	300	432	338	25	34	12	M24
1, 2	355	350	470	376	26	55	16	M24
	355	350	460	376	23	40	16	M20
	355	350	460	388	23	42	16	M20
2	355	350	476	376	29	42	12	M27
1, 2	400	400	525	430	30	56	28	M27
	400	400	515	430	26	40	16	M24
	400	400	515	442	26	42	16	M24
2	400	400	539	429	29	44	16	M27
1, 2	450	500	620	517	26	56	20	M24
1, 2	500	500	620	533	26	56	20	M24
2	560	600	725	618	30	68	20	M27
2	630	600	725	645	30	68	20	M27
2	710	700	840	740	30	49	24	M27
2	800	800	950	843	33	58	24	M30
2	900	900	1050	947	33	62	28	M30
2	250	250	362	293	25	30	12	M24
2	450	500	635	540	32	53	20	M30



### Profiled Backing Flanges Metal, Epoxy coated

#### Model:

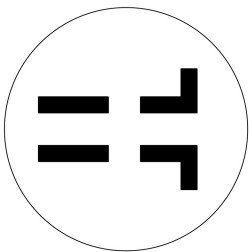
- Ductile iron (GGG 40), stoved epoxy (black, DIN30677)
- Metric: ISO 7005, EN 1092, ISO 9624

#### Note:

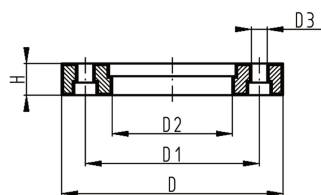
Flat side = bolt / washer side

Profiled side = flange adaptor side (aligned with collar)

AL: number of holes

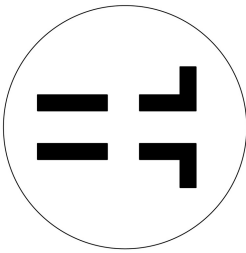


d (mm)	DN (mm)	PN (bar)	Standard	Bolt / circle	Design	Code	Weight (kg)
125	125	16	Metric	PN10	Butt	<b>701 474 386</b>	6.000
450	450	10	Metric	PN10	Butt	<b>724 705 026</b>	38.000
450	500	10	Metric	PN16	Butt	<b>724 705 326</b>	50.500
500	500	10	Metric	PN16	Butt	<b>724 705 327</b>	50.500
560	600	10	Metric	PN16	Butt	<b>724 705 328</b>	50.500
630	600	10	Metric	PN16	Butt	<b>724 705 329</b>	50.500
710	700	6	Metric	PN10	Butt	<b>724 705 130</b>	36.400
800	800	6	Metric	PN10	Butt	<b>724 705 131</b>	50.500
900	900	6	Metric	PN10	Butt	<b>724 705 132</b>	55.800
1000	1000	6	Metric	PN10	Butt	<b>724 705 133</b>	71.100
1200	1200	6	Metric	PN10	Butt	<b>724 705 134</b>	101.000

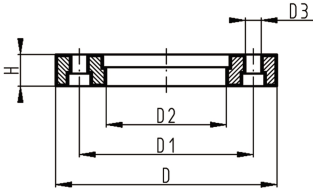


d (mm)	DN (mm)	D (mm)	D1 (mm)	D2 (mm)	D3 (mm)	H (mm)	AL	SC
125	125	250	210	135	18	25	8	M16
450	450	615	565	470	26	36	20	M24
450	500	715	650	517	33	46	20	M30
500	500	715	650	533	33	46	20	M30

table continued on the next page



d	DN	D	D1	D2	D3	H	AL	SC
(mm)	(mm)	(mm)	(mm)	(mm)	(mm)	(mm)		
560	600	840	770	618	36	55	20	M33
630	600	840	770	645	36	55	20	M33
710	700	900	840	740	30	45	24	M27
800	800	1015	950	843	33	53	24	M30
900	900	1115	1050	947	33	56	28	M30
1000	1000	1230	1160	1050	36	62	28	M33
1200	1200	1455	1380	1260	39	68	32	M36



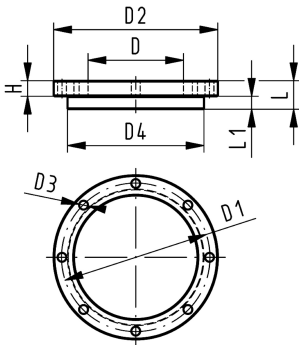
### Blanking flange set PE100 Combined jointing face flat and serrated metric

#### Model:

- d63 - d315: backing flange PP-V with end blank PE
- d355 - d630: backing flange PP/Steel with end blank PE
- Connecting dimensions: ISO 7005, EN 1092, DIN 2501
- **Bolt circle PN 10**

AL: number of holes

L: length of the End Blank



d	DN	PN	Code	Weight	D	D1	D2	D3	D4	L	L1	H	AL	SC
(mm)	(mm)	(bar)		(kg)	(mm)	(mm)	(mm)	(mm)	(mm)	(mm)	(mm)	(mm)		
63	50	16	<b>753 700 611</b>	0.560	75	125	165	18	102	30	14	24	4	M16
75	65	16	<b>753 700 612</b>	0.910	89	145	185	18	122	30	16	26	4	M16
90	80	16	<b>753 700 613</b>	0.921	105	160	200	18	138	30	17	27	8	M16
110	100	16	<b>753 700 614</b>	1.158	125	180	220	18	158	30	18	28	8	M16
125	100	16	<b>753 700 615</b>	1.678	132	180	220	18	158	35	25	28	8	M16
140	125	16	<b>753 700 616</b>	1.913	155	210	250	18	188	40	25	30	8	M16
160	150	16	<b>753 700 617</b>	2.373	175	240	285	22	212	40	25	32	8	M20
180	150	16	<b>753 700 618</b>	2.430	180	240	285	22	212	45	30	32	8	M20
200	200	16	<b>753 700 619</b>	3.495	232	295	340	22	268	50	32	34	8	M20
225	200	16	<b>753 700 620</b>	3.744	235	295	340	22	268	50	32	34	8	M20
250	250	16	<b>753 700 621</b>	6.051	285	350	395	22	320	55	35	38	12	M20
280	250	16	<b>753 700 622</b>	6.305	291	350	395	22	320	60	35	38	12	M20
315	300	16	<b>753 700 623</b>	8.894	335	400	445	22	370	65	35	42	12	M20
355	350	16	<b>753 700 624</b>	23.198	373	460	515	22	430	70	40	40	16	M20
400	400	16	<b>753 700 625</b>	30.766	427	515	574	26	482	75	46	40	16	M24
450	500	10	<b>753 700 626</b>	44.271	510	620	684	26	585	80	60	49	20	M24
500	500	10	<b>753 700 627</b>	47.165	530	620	684	26	585	90	60	49	20	M24
560	600	10	<b>753 700 628</b>	67.147	615	725	796	30	685	100	60	58	20	M27
630	600	10	<b>753 700 629</b>	68.574	642	725	796	30	685	110	60	68	20	M27



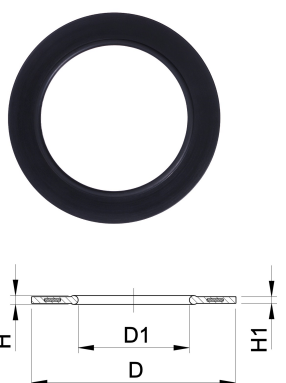
## Profile Flange Gasket EPDM/FKM metric

### Model:

- For all metric GF Flange Adaptors
- Hardness: 70° Shore EPDM, 75° Shore FKM
- EPDM: approved acc. to DVGW Water W 270, KTW recommendation
- Centering on the inner diameter of the screw crown
- material steel insert: carbon steel
- Rubber-steel body combined with rubber profile cord ring up to d630
- Rubber-steel body ideal for big dimensions (d710 - d1000)

di FA are the suitable inner diameters of flanges adaptors

d (mm)	D (mm)	di FA (mm)	D1 (mm)	DN (mm)	PN (bar)	EPDM Code	FKM Code	Weight (kg)	H (mm)	H1 (mm)
16	46	6 - 16	16	10	16	748 440 705	749 440 705	0.012	4	3
20	51	10 - 20	20	15	16	748 440 706	749 440 706	0.013	4	3
25	61	12 - 22	22	20	16	748 440 707	749 440 707	0.014	4	3
32	71	18 - 28	28	25	16	748 440 708	749 440 708	0.019	4	3
40	82	30 - 40	40	32	16	748 440 709	749 440 709	0.026	4	3
50	92	36 - 46	46	40	16	748 440 710	749 440 710	0.039	4	3
63	107	48 - 58	58	50	16	748 440 711	749 440 711	0.050	5	4
75	127	59 - 69	69	65	16	748 440 712	749 440 712	0.082	5	4
90	142	73 - 84	84	80	16	748 440 713	749 440 713	0.083	5	4
110	162	94 - 104	104	100	16	748 440 714	749 440 714	0.127	6	5
125	162	113 - 123	123	100	16	748 440 715	749 440 715	0.105	6	5
140	192	127 - 137	137	125	16	748 440 716	749 440 716	0.173	6	5
160 - 180	218	150 - 160	160	150	16	748 440 717	749 440 717	0.207	8	6
200	273	192 - 203	203	200	16	748 440 719	749 440 719	0.263	8	6
225	273	207 - 220	220	200	16	748 440 720	749 440 720	0.255	8	6
250	328	238 - 252	252	250	16	748 440 721	749 440 721	0.462	8	6
280	328	264 - 274	274	250	16	748 440 722	749 440 722	0.323	8	6
315	378	296 - 306	306	300	16	748 440 723	749 440 723	0.549	8	6
355	438	340 - 355	355	350	16	748 440 724	749 440 724	0.870	10	7
400	489	385 - 400	400	400	16	748 440 725	749 440 725	1.088	10	7
450	594	393 - 403	403	500	10	748 440 726	749 440 726	0.718	10	7
500	594	437 - 447	447	500	10	748 440 727	749 440 727	0.718	10	7
560	695	484 - 494	494	600	10	748 440 728	749 440 728	0.923	10	7
630	695	545 - 555	555	600	10	748 440 729	749 440 729	0.923	10	7
710	810	562 - 712	712	700	6	748 440 730		0.890	6	3
800	917	663 - 813	813	800	6	748 440 731		1.340	6	3
900	1017	765 - 915	915	900	6	748 440 732		1.170	6	3
1000	1124	866 - 1016	1016	1000	6	748 440 733		1.360	6	3



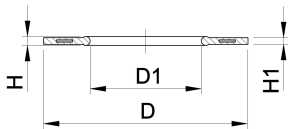
## Profile Flange Gasket EPDM/FKM ANSI/ASME

### Model:

- Suitable for flanges adaptors PP/PE PVDF
- Hardness: 70° Shore EPDM, 75° Shore FKM
- Centered by the flange bolts
- Dimension D is in accordance with the inner diameter of the bolt circle

d (mm)	DN (mm)	EPDM Code	Weight (kg)	FKM Code	Weight (kg)	Inch (inch)	D (mm)	D1 (mm)	H (mm)	H1 (mm)
25	20	748 440 502	0.010	749 440 502	0.011	3/4	54	27	4	3
32	25	748 440 503	0.011	749 440 503	0.023	1	64	33	4	3
40	32	748 440 504	0.017	749 440 504	0.024	1 1/4	73	42	4	3
50	40	748 440 505	0.030	749 440 505	0.030	1 1/2	83	48	4	3
63	50	748 440 506	0.029	749 440 506	0.042	2	102	60	5	4
75	65	748 440 507	0.046	749 440 507	0.068	2 1/2	121	73	5	4
90	80	748 440 508	0.053	749 440 508	0.083	3	133	89	5	4
110	100	748 440 509	0.088	749 440 509	0.139	4	171	115	6	5
160 - 180	150	748 440 512	0.127	749 440 512	0.240	6	222	160	8	6

table continued on the next page



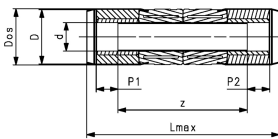
d (mm)	DN (mm)	EPDM Code	Weight (kg)	FKM Code	Weight (kg)	Inch (inch)	D (mm)	D1 (mm)	H (mm)	H1 (mm)
225	200	748 440 515	0.195	749 440 515	0.316	8	279	220	8	6
250	250	748 440 517	0.243	749 440 517	0.373	10	337	273	8	6
315	300	748 440 518	0.398	749 440 518	0.750	12	406	325	8	6
355	350	748 440 519	0.800	749 440 519	0.800	14	448	356	10	7
400	400	748 440 520	0.900	749 440 520	0.900	16	512	406	10	7
450	450	748 440 521	1.000	749 440 521	1.000	18	547	457	10	7
500	500	748 440 522	1.000	749 440 522	1.000	20	604	508	10	7



### COOL-FIT 4.0 Sliding coupler kit

#### Model:

- Pre-insulated PE100 SDR11, metric
- Insulation made from GF HE foam
- Outer jacket impact resistant. Color: black
- Integrated sealing lip, for a moisture-proof and vapour tight sealing
- Including two couplers, pipe section and four insulation half shells



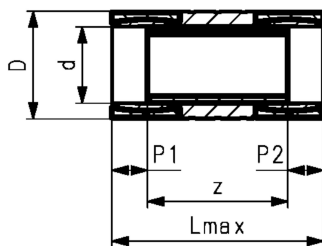
d (mm)	d/D (mm)	DN (mm)	SDR	PN (bar)	Code	Weight (kg)	Lmax (mm)	z (mm)	P1 (mm)	P2 (mm)	Dos (mm)
32	32/90	25	11	16	738 913 508	0.499	390	268	36.0	36	97
40	40/110	32	11	16	738 913 509	0.475	414	284	40.0	40	117
50	50/110	40	11	16	738 913 510	0.630	434	296	44.0	44	117
63	63/125	50	11	16	738 913 511	0.937	464	318	48.0	48	132
75	75/140	65	11	16	738 913 512	1.693	504	344	55.0	55	147
90	90/160	80	11	16	738 913 513	2.527	544	370	62.0	62	168
110	110/180	100	11	16	738 913 514	3.298	614	420	72.0	72	188
140	140/225	125	11	16	738 913 516	5.053	684	466	84.0	84	234
160	160/250	150	11	16	738 913 517	7.225	714	484	90.0	90	258
225	225/315	200	11	16	738 913 520	16.276	853	583	110.0	110	324



### COOL-FIT 4.0 Sliding coupler kit

#### Model:

- Pre-insulated PE100 SDR11, metric
- Insulation made from GF HE foam
- Outer jacket impact resistant. Color: black
- Including two couplers, pipe section and insulation half shells



d (mm)	d/D (mm)	DN (mm)	SDR	PN (bar)	Code	Weight (kg)	Lmax (mm)	z (mm)	P1 (mm)	P2 (mm)
250	250/355	250	11	16	738 913 521	22.948	764	517	123.5	123.5
280	280/400	250	11	16	738 913 522	32.633	773	521	126.0	126.0
315	315/450	300	11	16	738 913 523	39.518	824	557	133.5	133.5

# COOL-FIT 4.0 Weld-in port



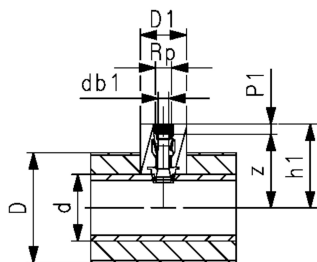
## COOL-FIT 4.0 Weld-in port PE/Stainless steel With female thread Rp

### Model:

- Material: PE100, Stainless steel V4A/ 316L
- With Weld-in port cone (PE100) and female thread Rp (stainless steel) for the installation of sensors, instruments, venting and draining
- Gasket: O-ring EPDM
- Including insulation made from EPDM foam

### Note:

For pipes COOL-FIT 4.0 and COOL-FIT 4.0F



Size (inch)	Thread Type	PN (bar)	Code	Weight (kg)
½	Rp	16	<b>738 113 206</b>	0.139
¾	Rp	16	<b>738 113 207</b>	0.179
1	Rp	16	<b>738 113 208</b>	0.240

z (mm)	h1 (mm)	P1 (mm)	db1 (mm)	D1 (mm)	d COOL-FIT 4.0 (mm)
70 + d/2	85+d/2	15	11.8	78	d63 - d225
68.5 + d/2	85+d/2	16	17.4	78	d63 - d225
67 + d/2	86+d/2	19	23.1	78	d63 - d225



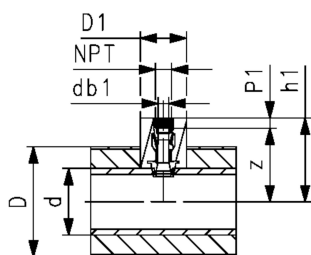
## COOL-FIT 4.0 Weld-in port PE/Stainless steel With female thread NPT

### Model:

- Material: PE100, Stainless steel V4A/ 316L
- With Weld-in port cone (PE100) and female thread Rp (stainless steel) for the installation of sensors, instruments, venting and draining
- Gasket: O-ring EPDM
- Including insulation made from EPDM foam

### Note:

For pipes COOL-FIT 2.0, COOL-FIT 2.0F, COOL-FIT 4.0 and COOL-FIT 4.0F



Size (inch)	Thread Type	PN (bar)	Code	Weight (kg)
½	NPT	16	<b>738 113 306</b>	0.148
¾	NPT	16	<b>738 113 307</b>	0.191
1	NPT	16	<b>738 113 308</b>	0.248

z (mm)	h1 (mm)	P1 (mm)	db1 (mm)	D1 (mm)	d COOL-FIT 4.0 (mm)
70 + d/2	85+d/2	15	11.8	78	d63 - d225
68.5 + d/2	85+d/2	16	17.4	78	d63 - d225
67 + d/2	86+d/2	19	23.1	78	d63 - d225



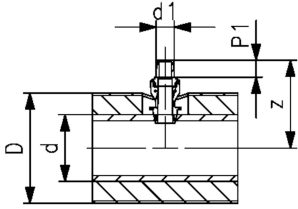
### COOL-FIT 2.0/4.0 Weld-in port PE/iFIT

**Model:**

- Material: PE100, brass
- With Weld-in port cone (PE100) and iFIT module (brass) for the transition to COOL-FIT Push System or iFIT
- Gasket: O-ring EPDM
- Including insulation made from EPDM foam

**Note:**

For pipes COOL-FIT 2.0, COOL-FIT 2.0F, COOL-FIT 4.0 and COOL-FIT 4.0F



d1 (mm)	PN (bar)	Code	Weight (kg)	z (mm)	P1 (mm)	d COOL-FIT 2.0 (mm)	d COOL-FIT 4.0 (mm)
25/32	16	<b>738 110 407</b>	0.228	92 + d/2	28	d63 - d140	d63 - d225



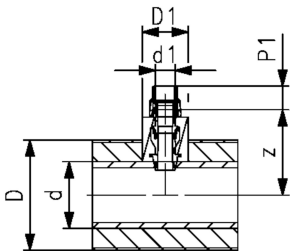
### COOL-FIT 4.0 Weld-in port PE/Sanipex MT

**Model:**

- Material: PE100, brass with low lead content, dezincification resistant
- With Weld-in port cone (PE100) and Sanipex MT adaptor (brass) for the transition to Sanipex MT
- Gasket: O-ring EPDM
- Including insulation made from EPDM foam

**Note:**

For pipes COOL-FIT 2.0, COOL-FIT 2.0F, COOL-FIT 4.0 and COOL-FIT 4.0F



d (mm)	PN (bar)	Code	Weight (kg)	z (mm)	P1 (mm)	db1 (mm)	D1 (mm)	d COOL-FIT 4.0 (mm)
32	16	<b>738 113 508</b>	0.245	49 + d/2	39	11.8	78	d63 - d225



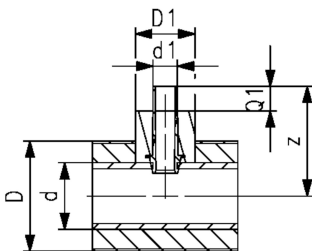
### COOL-FIT 4.0 Weld-in port PE spigot

**Model:**

- Material: PE100
- With Weld-in port cone (PE100) and metric spigot SDR11 for transitions to COOL-FIT 4.0 fittings type A or PE Fittings
- Including insulation made from EPDM foam

**Note:**

For pipes COOL-FIT 2.0, COOL-FIT 2.0F, COOL-FIT 4.0 and COOL-FIT 4.0F



d1 (mm)	SDR	PN (bar)	Code	Weight (kg)	z (mm)	Q1 (mm)	D1 (mm)	d COOL-FIT 4.0 (mm)
32	11	16	<b>738 113 608</b>	0.075	125 + d/2	36	78	d63 - d225
40	11	16	<b>738 113 609</b>	0.107	131 + d/2	40	85	d75 - d225
50	11	16	<b>738 113 610</b>	0.163	140 + d/2	44	110	d90 - d225



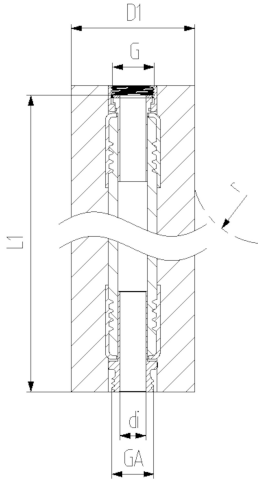
# COOL-FIT 4.0 Flexible Hoses

## COOL-FIT 4.0 Flex hose



### Model:

- EPDM flexible hose with stainless steel protection
- Adaptors stainless steel 1.4404 / 316L
- Pre-Insulation made from EPDM foam with outer jacket impact resistant and tearproof
- With loose union nut G on one end and male thread GA on the other



d (mm)	D1 (mm)	Thread Type	Size (inch)	DN (mm)	PN (bar)	Code	L1 (mm)	di (mm)	r (mm)
20	72	G/GA	½	15	10	<b>738 923 206</b>	1000	15	119
25	82	G/GA	¾	20	10	<b>738 923 207</b>	1000	19	156
32	92	G/GA	1	25	10	<b>738 923 208</b>	1000	25	192
40	95	G/GA	1 ¼	32	8	<b>738 923 209</b>	1500	32	252
50	110	G/GA	1 ½	40	6	<b>738 923 210</b>	2000	38	312
63	123	G/GA	2	50	6	<b>738 923 211</b>	2000	52	372

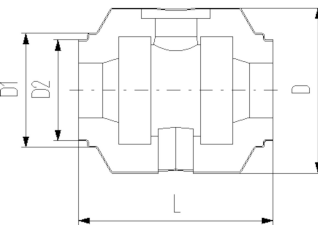
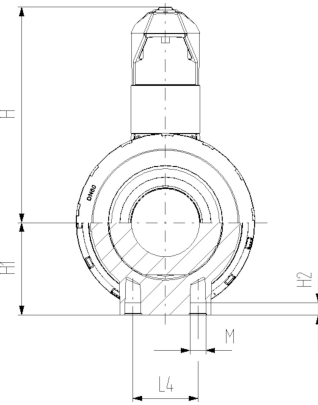
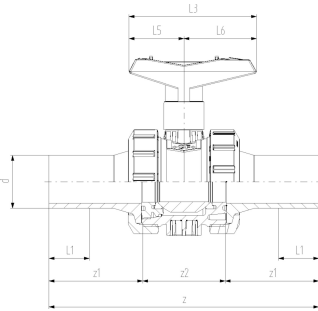
# COOL-FIT 4.0 Valves



## COOL-FIT 4.0 Ball valve type 546 Pro hand-operated

### Model:

- Material: ABS with spigot PE100 SDR11, metric
- Ball seat PTFE
- Integrated stainless steel mounting inserts
- Including insulation half shells
- Separate Fittings type A needed for joining



d (mm)	DN (mm)	PN	kv-value ( $\Delta p=1$ bar) (l/min)	SDR	EPDM Code	Weight (kg)
32	25	10	700	11	<b>138 546 108</b>	0.542
40	32	10	1000	11	<b>138 546 109</b>	0.887
50	40	10	1600	11	<b>138 546 110</b>	1.165
63	50	10	3100	11	<b>138 546 111</b>	2.100
75	65	10	5000	11	<b>138 546 112</b>	5.125
90	80	10	7000	11	<b>138 546 113</b>	7.173

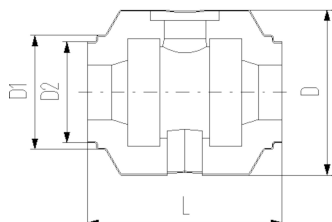
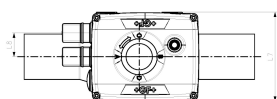
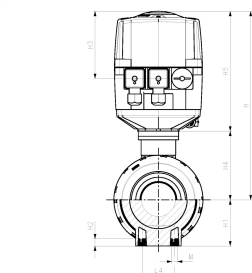
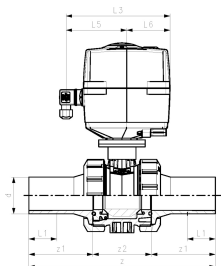
d (mm)	DN (mm)	D (mm)	D1 (mm)	D2 (mm)	L (mm)	L1 (mm)	L3 (mm)	H (mm)	H1 (mm)	H2 (mm)	z (mm)	z1 (mm)	z2 (mm)	closest inch (inch)
32	25	135	97	82	152	36	97	98	36	12	223	76	76	1
40	32	157	117	97	170	40	128	119	44	15	249	82	82	1 ¼
50	40	169	117	97	184	44	128	125	51	15	271	91	91	1 ½
63	50	204	132	117	227	48	152	150	64	15	321	110	110	2
75	65	235	147	132	276	55	270	194	85	15	386	125	125	2 ½
90	80	255	168	147	297	62	270	200	105	15	421	140	140	3

**COOL-FIT 4.0 Ball valve type 179**  
**100-230V**



**Model:**

- Material: ABS with spigot PE100 SDR11, metric
- Ball seat PTFE
- Integrated stainless steel mounting inserts
- Voltage 100-230V, 50-60Hz
- Factory set control range 90°
- Heating element, position feedback (Open/Close/ Middle)
- Including insulation half shells
- Separate Fittings type A needed for joining



d (mm)	DN (mm)	PN (bar)	kv-value (dp=1 bar)	SDR	Code	Weight (kg)
32	25	10	700	11	<b>138 546 208</b>	2.838
40	32	10	1000	11	<b>138 546 209</b>	3.174
50	40	10	1600	11	<b>138 546 210</b>	3.452
63	50	10	3100	11	<b>138 546 211</b>	4.475
75	65	10	5000	11	<b>138 546 212</b>	7.156
90	80	10	7000	11	<b>138 546 213</b>	13.000

d (mm)	DN (mm)	D (mm)	D1 (mm)	D2 (mm)	L (mm)	L1 (mm)	L3 (mm)	L4 (mm)	H (mm)	H1 (mm)	H2 (mm)	z (mm)	z1 (mm)	z2 (mm)	M
32	25	135	97	82	152	36	190	25	228	36	12	223	76	71	M6
40	32	157	117	97	170	40	190	45	240	44	15	249	82	85	M8
50	40	169	117	97	184	44	190	45	246	51	15	271	91	89	M8
63	50	204	132	117	227	48	190	45	263	64	15	321	110	101	M8
75	65	235	147	132	276	55	190	70	322	85	15	386	125	136	M8
90	80	255	168	147	297	62	190	70	357	105	15	421	140	141	M8

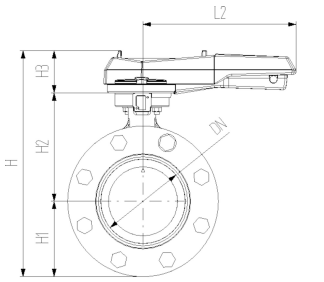
d (mm)	DN (mm)	closest inch (inch)
32	25	1
40	32	1 ¼
50	40	1 ½
63	50	2
75	65	2 ½
90	80	3



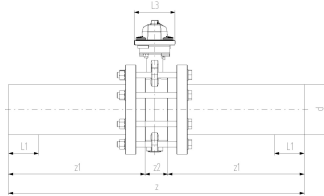
### COOL-FIT 4.0 Wafer-style butterfly valve kit type 567 Hand lever with ratchet settings

#### Model:

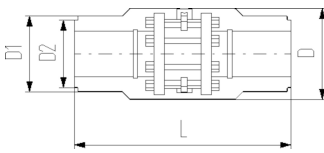
- Material: ABS with spigot PE100 SDR11, metric
- Including flange adaptors, backing flanges PP-Steel, bolts and insulation half shells
- Separate Fittings type A needed for joining



d (mm)	DN (mm)	PN	kv-value ( $\Delta p=1$ bar) (L/min)	EPDM Code	Weight (kg)
110	100	10	6500	<b>138 567 114</b>	8.950
140	125	10	11500	<b>138 567 116</b>	15.751
160	150	10	16600	<b>138 567 117</b>	17.975
225	200	10	39600	<b>138 567 120</b>	28.316



d (mm)	DN (mm)	D (mm)	D1 (mm)	D2 (mm)	L (mm)	L1 (mm)	L2 (mm)	L3 (mm)	H (mm)	H1 (mm)	H2 (mm)	H3 (mm)	z (mm)	z1 (mm)	z2 (mm)
110	100	310	188	168	556	72	255.0	106	325	104	167	55	696	320	56
140	125	280	233	222	670	84	252.5	58	369	119	180	70	830	383	64
160	150	358	259		720	90	255.0	115	401	143	203	55	895	412	72
225	200	409	325		776	110	408.0	149	465	170	210	85	996	462	73



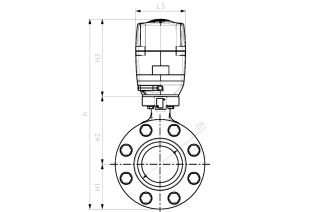
d (mm)	DN (mm)	closest inch
110	100	4
140	125	5
160	150	6
225	200	8



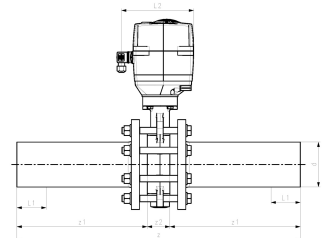
### COOL-FIT 4.0 Wafer-style butterfly valve kit type 145 100-230V

#### Model:

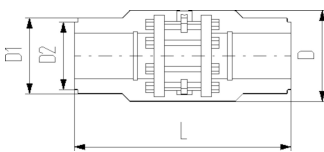
- Material: ABS with spigot PE100 SDR11, metric
- Voltage 100-230V, 50-60Hz
- Factory set control range 90°
- Heating element, position feedback (Open/Close/ Middle)
- Including flange adaptors, backing flanges PP-Steel, bolts and insulation half shells
- Separate Fittings type A needed for joining



d (mm)	DN (mm)	PN	kv-value ( $\Delta p=1$ bar) (L/min)	EPDM Code	Weight (kg)
110	100	10	6500	<b>138 567 214</b>	13.320
140	125	10	11500	<b>138 567 216</b>	18.650
160	150	10	16500	<b>138 567 217</b>	22.346
225	200	10	39600	<b>138 567 220</b>	36.037



d (mm)	DN (mm)	D (mm)	D1 (mm)	D2 (mm)	L (mm)	L1 (mm)	L2 (mm)	L3 (mm)	H (mm)	H1 (mm)	H2 (mm)	H3 (mm)	z (mm)	z1 (mm)	z2 (mm)
110	100	310	188	168	552	72	179	122	460	104	167	190	696	320	56
140	125	280	233	222	670	84	172	179	475	119	173	183	830	383	64
160	150	358	259		720	90	179	122	535	143	203	190	895	412	72
225	200	409	325		776	110	179	122	580	170	210	200	996	462	73



d (mm)	DN (mm)	closest inch
110	100	4
140	125	5
160	150	6
225	200	8



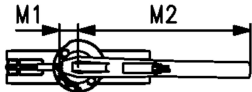
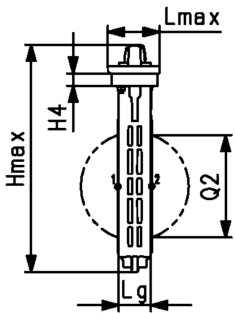
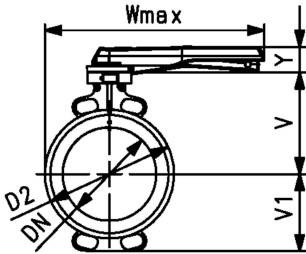
**Wafer-style, intermediate installation butterfly valve type 565 PVDF/PA-GF  
With hand lever**  
**Flange standard metric/ANSI/BS/JIS**  
**Suitable for ABS, PVC-U, PVC-C, ecoFIT, COOL-FIT and PROGEF Systems**

**Model:**

- Installation length: EN558 row 20, ISO 5752 row 20, API 609 table 2
- Flange standards: ISO 7005 PN10/16, EN 1092 PN10/16, DIN 2501 PN10/16, ANSI/ASME B 16.5 Class 150, BS 1560: 1989 Class 125/150; BS 4504 PN10/16, JIS B 2220 10K, JIS B 2239 10K
- For easy installation and removal
- Lockable ergonomic lever
- Suitable for water and water treatment applications (e.g. sea water, drinking water and industrial water)

**Option:**

- Individual configuration of the valve possible
- Pneumatic or electric actuators from GF
- Double sensor for electrical position feedback incl. LED feedback



DN (mm)	PN (bar)	d (mm)	Size (inch)	kv-value ( $\Delta p=1$ bar) (L/min)	EPDM Code	SP	Weight (kg)	FKM Code	SP	Weight (kg)
50	16	63	2	1445	199 565 000	1	1.3	199 565 020	1	1.4
65	16	75	2 ½	2530	199 565 001	1	1.5	199 565 021	1	1.6
80	16	90	3	4020	199 565 002	1	1.7	199 565 022	1	1.8
100	16	110	4	5850	199 565 003	1	2.5	199 565 023	1	2.7
125	16	140	5	11900	199 565 004	1	3.1	199 565 024	1	3.3
150	16	160	6	18050	199 565 005	1	4.0	199 565 025	1	4.3
200	10	225	8	43667	199 565 006	1	5.3	199 565 026	1	5.7

DN (mm)	D2 (mm)	Wmax (mm)	Hmax (mm)	Lmax (mm)	H4 (mm)	V (mm)	V1 (mm)	Lg (mm)	M1 (mm)	M2 (mm)	Y (mm)	Q2 (mm)
50	100.0	264.0	249.5	96.0	23.0	133.5	63.0	43.0	35.5	204.5	53.0	28.5
65	121.0	271.0	275.5	96.0	23.0	140.0	82.0	46.0	35.5	204.5	53.0	44.0
80	138.0	273.5	288.0	96.0	23.0	146.0	89.0	46.0	35.5	204.5	53.0	63.5
100	158.5	334.0	324.0	96.0	23.0	166.5	104.0	52.0	35.5	254.5	53.0	84.0
125	187.0	348.0	351.0	96.0	23.0	180.0	118.0	56.0	35.5	254.5	53.0	110.5
150	213.0	426.0	372.5	96.0	23.0	189.0	130.5	56.0	35.5	319.5	53.0	137.5
200	267.0	453.0	422.0	96.0	23.0	209.5	159.0	60.0	35.5	319.5	53.0	190.5



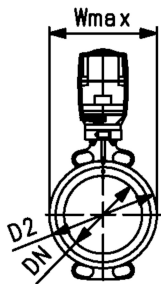
**Wafer-style, intermediate installation butterfly valve type 565 PVDF/PA-GF**  
**With electric actuator 230V**  
**Without manual override**  
**Flange standard metric/ANSI/BS/JIS**  
**Suitable for ABS, PVC-U, PVC-C, ecoFIT, COOL-FIT and PROGEF Systems**

**Model:**

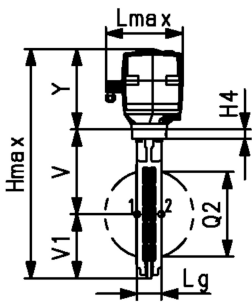
- Installation length: EN558 row 20, ISO 5752 row 20, API 609 table 2
- Flange standards: ISO 7005 PN10/16, EN 1092 PN10/16, DIN 2501 PN10/16, ANSI/ASME B 16.5 Class 150, BS 1560: 1989 Class 125/150; BS 4504 PN10/16, JIS B 2220 10K, JIS B 2239 10K
- For easy installation and removal
- Voltage 100-230V, 50-60Hz
- Factory set control range 0-90°
- Heating element, position feedback (Open/Close/ Middle)
- Manual override integrated in electric actuator
- Suitable for water and water treatment applications (e.g. sea water, drinking water and industrial water)
- Switching Ring for the double sensor for electrical position feedback is pre-assembled. Double sensor can be ordered as accessory

**Option:**

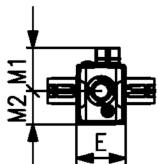
- Individual configuration of the valve possible
- Hand or pneumatic actuators from GF
- Double sensor for electrical position feedback incl. LED feedback
- Optional accessories: Fail-safe return unit, Monitoring board, Position controller, Profibus DP board
- Additional manual override between valve and actuator



DN (mm)	PN (bar)	d (mm)	Size (inch)	kv-value ( $\Delta p=1$ bar) (L/min)	Actuator	EPDM Code	SP	Weight (kg)
50	10	63	2	1445	EA45	<b>199 565 300</b>	1	3.3
65	10	75	2 ½	2530	EA120	<b>199 565 301</b>	1	4.6
80	10	90	3	4020	EA120	<b>199 565 302</b>	1	4.7
100	10	110	4	5850	EA120	<b>199 565 303</b>	1	5.6
125	10	140	5	11900	EA120	<b>199 565 304</b>	1	6.1
150	10	160	6	18050	EA250	<b>199 565 305</b>	1	8.7
200	10	225	8	43667	EA250	<b>199 565 306</b>	1	10.0
250	6	280	10	62333	EA250	<b>199 565 307</b>	1	14.5
300	4	315	12	94500	EA250	<b>199 565 308</b>	1	18.2



DN (mm)	FKM Code	SP	Weight (kg)
50	<b>199 565 320</b>	1	3.4
65	<b>199 565 321</b>	1	4.7
80	<b>199 565 322</b>	1	4.8
100	<b>199 565 323</b>	1	5.8
125	<b>199 565 324</b>	1	6.4
150	<b>199 565 325</b>	1	9.0
200	<b>199 565 326</b>	1	10.5
250	<b>199 565 327</b>	1	15.2
300	<b>199 565 328</b>	1	19.4



DN (mm)	D2 (mm)	Wmax (mm)	Hmax (mm)	Lmax (mm)	H4 (mm)	V (mm)	V1 (mm)	Lg (mm)	E (mm)	M1 (mm)	M2 (mm)	Y (mm)	Q2 (mm)
50	100.0	122.5	377.5	190.0	23.0	133.5	63.0	43.0	122.5	107.5	83.0	166.5	28.5
65	121.0	132.5	411.5	190.0	23.0	140.0	82.0	46.0	122.5	107.5	83.0	189.5	44.0
80	138.0	137.5	424.0	190.0	23.0	146.0	89.0	46.0	122.5	107.5	83.0	189.5	63.5
100	158.5	158.5	459.5	190.0	23.0	166.5	104.0	52.0	122.5	107.5	83.0	189.5	84.0
125	187.0	187.0	487.5	190.0	23.0	180.0	118.0	56.0	122.5	107.5	83.0	189.5	110.5
150	213.0	213.0	518.5	190.0	23.0	189.0	130.5	56.0	122.5	107.5	83.0	199.5	137.5
200	267.0	267.0	568.0	190.0	23.0	209.5	159.0	60.0	122.5	107.5	83.0	199.5	190.5
250	325.5	325.5	674.5	190.0	23.0	262.5	195.5	68.0	122.5	107.5	83.0	216.5	239.0
300	380.0	380.0	731.0	190.0	23.0	284.5	230.5	78.0	122.5	107.5	83.0	216.5	285.5



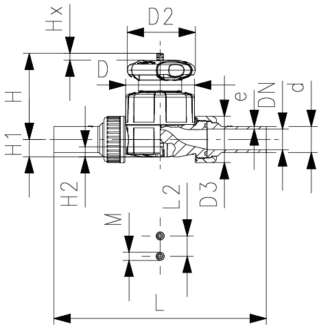
**ABS Diaphragm valve type 514**  
**With butt fusion spigots long**

**Model:**

- Double flow rate compared to predecessor
- One housing nut replaces four screws
- Handwheel with built-in locking mechanism
- For easy installation and removal
- Short overall length

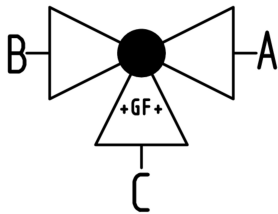
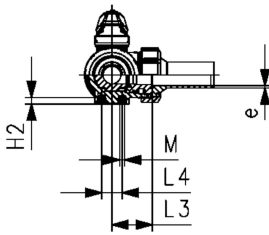
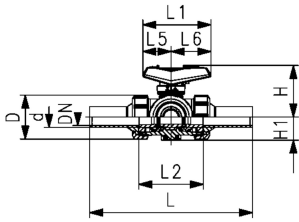
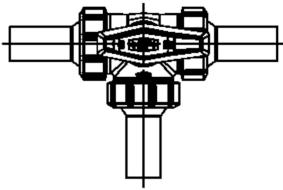
**Option:**

- Individual configuration of the valve
- Self adjusting multifunctional module with integrated limit switches



d (mm)	DN (mm)	Size (inch)	PN (bar)	kv-value ( $\Delta p=1$ bar) (l/min)	EPDM Code
20	15	½	10	125	<b>169 514 312</b>
25	20	¾	10	271	<b>169 514 313</b>
32	25	1	10	481	<b>169 514 314</b>
40	32	1 ¼	10	759	<b>169 514 315</b>
50	40	1 ½	10	1263	<b>169 514 316</b>
63	50	2	10	1728	<b>169 514 317</b>

d (mm)	DN (mm)	D (mm)	D2 (mm)	D3 (mm)	H (mm)	H1 (mm)	H2 (mm)	L (mm)	L2 (mm)	M	z (mm)	Lift = Hx (mm)	closest inch (inch)
20	15	65	65	43	73	14	12	230	25	M6	96	7	½
25	20	80	65	51	81	18	12	256	25	M6	114	10	¾
32	25	88	87	58	107	22	12	268	25	M6	122	13	1
40	32	101	87	72	115	26	15	302	45	M8	140	15	1 ¼
50	40	117	135	83	148	32	15	334	45	M8	160	19	1 ½
63	50	144	135	100	166	39	15	376	45	M8	190	25	2



**ecoFIT 3-Way ball valve type 543 Pro ABS**  
**Horizontal/L-port**  
**With butt fusion spigots long PE100 SDR11 metric**

**Model:**

- Lockable lever as standard (DN10-DN50)
- Material: ABS/PE
- For easy installation and removal (valve end and union nut are compatible with type 546)
- Ball seat PTFE
- Angle of operation 360° without turn limiter
- Turn limiter 90° enclosed, in different positions usable as a clip-on ring
- Integrated stainless steel mounting inserts
- Delivery status A-C opened, see flow scheme
- Z-dimension, valve end and union nut are compatible with type 543 (1stGeneration)

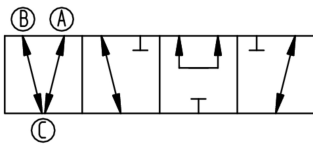
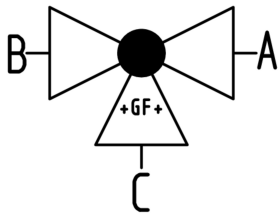
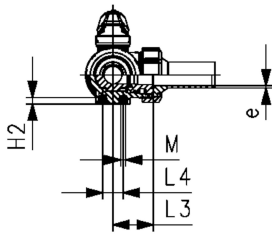
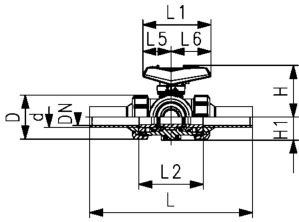
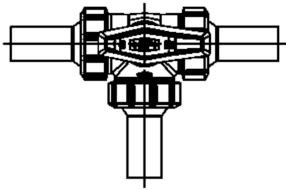
**Option:**

- Interface-module with position feedback sensor, incl. LED feedback (DN10-50)
- Manual spring return lever ("Dead man") (DN10-25)
- Pneumatic or electric actuators from GF
- Individual configuration of the valve possible

d	DN	Size	PN	kv-value	EPDM	Weight
(mm)	(mm)	(inch)	(bar)	( $\Delta p=1$ bar)	Code	(kg)
				(l/min)		
20	15	½	10	75	<b>169 543 302</b>	0.203
25	20	¾	10	150	<b>169 543 303</b>	0.296
32	25	1	10	280	<b>169 543 304</b>	0.450
40	32	1 ¼	10	480	<b>169 543 305</b>	0.762
50	40	1 ½	10	620	<b>169 543 306</b>	1.161
63	50	2	10	1230	<b>169 543 307</b>	2.509

d	DN	D	L	L1	L2	L3	L4	L5	L6	H	H1	H2	M	e	closest
(mm)	(mm)	(mm)	(mm)	(mm)	(mm)	(mm)	(mm)	(mm)	(mm)	(mm)	(mm)	(mm)	(mm)	(mm)	inch
															(inch)
20	15	50	210	82	73	36	25	35	47	61	28	8	6	1.9	½
25	20	58	237	106	86	43	25	44	62	74	32	8	6	2.3	¾
32	25	68	251	106	99	50	25	44	62	80	36	8	6	2.9	1
40	32	84	283	131	120	60	45	57	74	95	45	9	8	3.7	1 ¼
50	40	97	319	131	137	69	45	57	74	102	51	9	8	4.6	1 ½
63	50	124	399	152	179	89	45	66	86	117	65	9	8	5.8	2





**ecoFIT 3-Way ball valve type 543 Pro ABS**  
**Horizontal/T-port**  
**With butt fusion spigots long PE100 SDR11 metric**

**Model:**

- Material: ABS/PE
- Lockable lever as standard (DN10-DN50)
- For easy installation and removal (valve end and union nut are compatible with type 546)
- Ball seat PTFE
- Angle of operation 360° without turn limiter
- Turn limiter 90° enclosed, in different positions usable as a clip-on ring
- Integrated stainless steel mounting inserts
- Delivery status A-B-C opened, see flow scheme
- Z-dimension, valve end and union nut are compatible with type 543 (1stGeneration)

**Option:**

- Interface-module with position feedback sensor, incl. LED feedback (DN10-50)
- Manual spring return lever ("Dead man") (DN10-25)
- Pneumatic or electric actuators from GF
- Individual configuration of the valve possible

d	DN	Size	PN	kv-value	EPDM	Weight
(mm)	(mm)	(inch)	(bar)	( $\Delta p=1$ bar)	Code	(kg)
				(l/min)		
20	15	½	10	200	<b>169 543 322</b>	0.203
25	20	¾	10	470	<b>169 543 323</b>	0.296
32	25	1	10	793	<b>169 543 324</b>	0.450
40	32	1 ¼	10	1290	<b>169 543 325</b>	0.762
50	40	1 ½	10	1910	<b>169 543 326</b>	1.161
63	50	2	10	3100	<b>169 543 327</b>	2.509

d	DN	D	L	L1	L2	L3	L4	L5	L6	H	H1	H2	M	e	closest
(mm)	(mm)	(mm)	(mm)	(mm)	(mm)	(mm)	(mm)	(mm)	(mm)	(mm)	(mm)	(mm)	(mm)	(mm)	inch
															(inch)
20	15	50	210	82	73	36	25	35	47	61	28	8	6	1.9	½
25	20	58	237	106	86	43	25	44	62	74	32	8	6	2.3	¾
32	25	68	251	106	99	50	25	44	62	80	36	8	6	2.9	1
40	32	84	283	131	120	60	45	57	74	95	45	9	8	3.7	1 ¼
50	40	97	319	131	137	69	45	57	74	102	51	9	8	4.6	1 ½
63	50	124	399	152	179	89	45	66	86	117	65	9	8	5.8	2

# COOL-FIT 4.0 Accessories

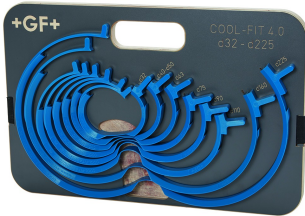


## COOL-FIT 4.0 Assembly Aid-Kit Type B

### Model:

- For simplified mounting of COOL-FIT 4.0 Fitting on COOL-FIT 4.0 Pipe

d (mm)	D (mm)	Code	Weight (kg)	pieces/kit
32	90	<b>799 738 511</b>	0.384	6
40 - 50	110	<b>799 738 512</b>	0.456	6
63	125	<b>799 738 513</b>	0.504	6
75	140	<b>799 738 514</b>	0.564	6
90	160	<b>799 738 515</b>	0.636	6
110	180	<b>799 738 516</b>	0.708	6
140	225	<b>799 738 518</b>	0.131	4
160	250	<b>799 738 519</b>	0.620	4
225	315	<b>799 738 522</b>	0.760	4



## COOL-FIT 4.0 Assembly Aid-Kit Type A

### Model:

- For simplified mounting of COOL-FIT 4.0 Fitting on COOL-FIT 4.0 Pipe

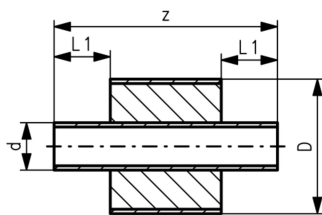
d (mm)	D (mm)	Code	Weight (kg)	pieces/kit
32 - 225	90 - 315	<b>799 738 502</b>	6.100	2 / Dimension



## COOL-FIT 4.0 Barrel nipple with insulation, d32-d225

### Model:

- Pre-insulated PE100 SDR11/17 metric
- Insulation made from GF HE foam
- Impact resistant. Color: black
- For short connections between COOL-FIT 4.0 Fittings Typ A



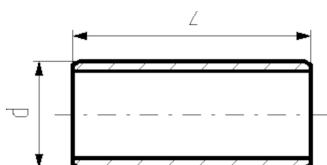
d (mm)	d/D (mm)	DN (mm)	SDR	PN (bar)	Code	Weight (kg)	L1 (mm)	z (mm)	closest inch (inch)
32	32/90	25	11	16	<b>738 913 408</b>	0.126	36	151	1
40	40/110	32	11	16	<b>738 913 409</b>	0.188	40	155	1 ¼
50	50/110	40	11	16	<b>738 913 410</b>	0.226	44	163	1 ½
63	63/125	50	11	16	<b>738 913 411</b>	0.328	48	171	2
75	75/140	65	11	16	<b>738 913 412</b>	0.447	55	185	2 ½
90	90/160	80	11	16	<b>738 913 413</b>	0.631	62	199	3
110	110/180	100	11	16	<b>738 913 414</b>	0.929	72	219	4
140	140/225	125	11	16	<b>738 913 416</b>	1.101	84	243	5
160	160/250	150	17	10	<b>738 913 417</b>	1.576	90	255	6
225	225/315	200	17	10	<b>738 913 420</b>	3.254	110	295	8



### COOL-FIT 2.0/4.0 Barrel nipple

#### Model:

- PE100, SDR11/17, metric
- For the shortest possible connection between fittings
- For media temperatures between 0°C up to 60°C
- COOL-FIT 4.0 Adhesive ring needed for joining



d (mm)	SDR	PN	Code	Weight (kg)	z (mm)	closest inch (inch)
32	11	16	<b>738 910 408</b>	0.020	72	1
40	11	16	<b>738 910 409</b>	0.034	80	1 ¼
50	11	16	<b>738 910 410</b>	0.059	88	1 ½
63	11	16	<b>738 910 411</b>	0.101	96	2
75	11	16	<b>738 910 412</b>	0.162	110	2 ½
90	11	16	<b>738 910 413</b>	0.264	124	3
110	11	16	<b>738 910 414</b>	0.454	144	4
140	11	16	<b>738 910 416</b>	0.855	168	5
160	17	10	<b>738 910 417</b>	0.798	180	6
225	17	10	<b>738 910 420</b>	1.885	220	8



### COOL-FIT 2.0/4.0 adhesive ring

#### Model:

- Double sided, for sealing connections of fittings with barrel nipple

D (mm)	d (mm)	d COOL-FIT 4.0 (mm)	d COOL-FIT 2.0 (mm)	Code	Weight (kg)
75	32		32	<b>738 010 012</b>	0.002
90	32 - 50	32	40 - 50	<b>738 010 013</b>	0.002
110	40 - 63	40 - 50	63	<b>738 010 014</b>	0.003
125	63 - 75	63	75	<b>738 010 015</b>	0.003
140	75 - 90	75	90	<b>738 010 016</b>	0.003
160	90 - 110	90	110	<b>738 010 017</b>	0.005
180	110	110		<b>738 010 018</b>	0.005
200	140		140	<b>738 010 019</b>	0.006
225	140	140		<b>738 010 020</b>	0.009
250	160	160		<b>738 010 021</b>	0.009
315	225	225		<b>738 010 023</b>	0.027

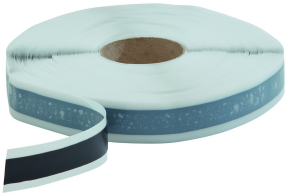


### COOL-FIT 4.0 Sealing clamp-kit

#### Model:

- Supports the function of the top sealing lip of COOL-FIT 4.0 Fittings for vertical installations outdoor
- Material: stainless steel 304/V2A
- Color: black

d (mm)	D (mm)	Code	Weight (kg)	pieces/kit
32	90	<b>738 013 013</b>	0.250	6
40 - 50	110	<b>738 013 014</b>	0.300	6
63	125	<b>738 013 015</b>	0.300	6
75	140	<b>738 013 016</b>	0.300	6
90	160	<b>738 013 017</b>	0.300	6
110	180	<b>738 013 018</b>	0.300	6
140	225	<b>738 013 020</b>	0.300	6
160	250	<b>738 013 021</b>	0.390	6
225	315	<b>738 013 023</b>	0.450	6

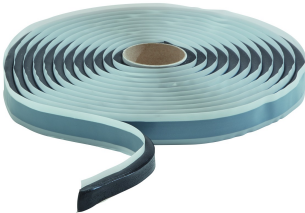


### COOL-FIT 4.0 Sealing tape 25mm

**Model:**

- Supports the function of the top sealing lip of COOL-FIT 4.0 Fittings for vertical installations outdoor
- 30m on a roll, 25mm width, buthylene rubber-based

d (mm)	D (mm)	Code	Weight (kg)
32 - 225	90 - 315	<b>738 013 031</b>	1.400



### COOL-FIT 4.0 Transition of Insulation

**Model:**

- For a moistur-proof and vapour tight transition of insulations from COOL-FIT 4.0 to COOL-FIT 2.0
- 4.5m on a roll, buthylene rubber-based

d (mm)	D (mm)	Code	Weight (kg)
32-140	90-225	<b>738 013 041</b>	1.400



### COOL-FIT 4.0 Sealing tape 40mm

**Model:**

- For a water- and steam-tight sealing of inspection gaps in combination with shrink sleeves/ - sockets
- Sealing tape: 40mm width, buthylene rubber-based
- 30 m on a roll

d-d (mm)	D (mm)	Code	Weight (kg)	Closest inch (inch)
25 - 450	250 - 630	<b>738 011 152</b>	2.134	¾ - 18



### COOL-FIT 4.0 insulation for welding indicator, coupler d250-d450

- Suitable for COOL-FIT 4.0 couplers d250-d450
- Insulation for welding pin and welding indicator opening
- 2.5m on a roll, 20mm diameter, closed-cell PE foam

d (mm)	Code	Weight (kg)
250 - 450	<b>738 010 055</b>	0.500



### COOL-FIT 4.0 Shrink socket PE

**Model:**

- For a water- and steam-tight sealing in combination with buthylene rubber-based sealing tape
- Length: 100 mm
- "Heavy duty" version for high end applications
- For connections of the same pipe outer diameter

D (mm)	d (mm)	Code	SP	Weight (kg)	L (mm)
355	250	<b>738 011 024</b>	1	0.900	100
400	280	<b>738 011 025</b>	1	1.100	100
450	315	<b>738 011 026</b>	1	1.900	100
500	355	<b>738 011 027</b>	1	1.000	100
560	400	<b>738 011 028</b>	1	1.000	100
630	450	<b>738 011 029</b>	1	1.000	100



### Cold shrink tape PE black

**Model:**

- For indoor use only
- Width (L) available in 100mm
- 15 m on a roll
- Shrinks without heat application

d-d (mm)	D (mm)	Code	Weight (kg)	Closest inch (inch)
25 - 450	90 - 630	<b>738 011 107</b>	1.400	3/4 - 18



### Hot shrink tape PE black

**Model:**

- For watertight sealing of outer pipe in underground installations
- Mastic backed
- 30 m on a roll
- Shrink with a burner or hot air gun
- Order sealing patches separately (738 011 109)

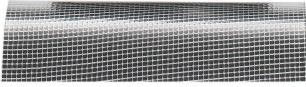
d-d (mm)	D (mm)	Code	Weight (kg)	L (mm)	Closest inch (inch)
250 - 455	355 - 630	<b>738 011 108</b>	3.000	150	3/4 - 18

Aussenrohr D/ jacket pipe D (mm)	Länge Schrumpfband/ shrink tape length (mm)
355	1210
400	1350
450	1500
500	1660
560	1850
630	2070

## Sealing patch

### Model:

- For sealing of hot-shrink-tape in underground installations
- Mastic backed
- 1 patch needed per seal

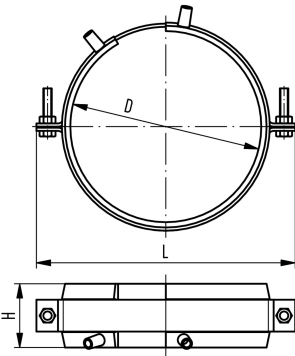


d-d (mm)	D (mm)	Code	Weight (kg)	L (mm)	Closest inch (inch)
25 - 450	90 - 630	<b>738 011 109</b>	0.100	150	¾ - 18

## COOL-FIT 2.0/4.0 Fixed point

### Model:

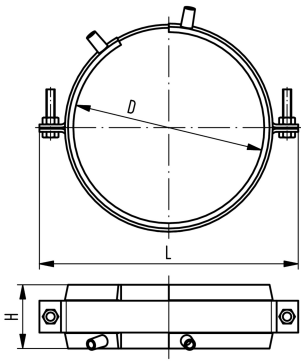
- The product consists of two components namely electrofusion tapes and pipe brackets.
- Electrofusion welded tape as permanent connection to transmit the forces that occur in the pipe to the fixed point.
- The delivered pipe brackets are needed to deliver welding pressure during installation and give stability during operation.
- For welding, use an MSA2.x, MSA4.x, MSA 250, 300, 350, 400 or commercially available 220 V fusion machines.
- If you use an MSA fusion machine from GF Piping Systems, use the 799 350 339 adapter or the 790 156 032 y-cable set.
- Please take note of the maximum allowed forces for this version in the table below.
- **Fixed point brackets and cross braces have to be calculated and obtained by the installer. They are not included in the fixed point set from GF.**



D (mm)	d (mm)	d COOL-FIT 4.0 (mm)	d COOL-FIT 2.0 (mm)	Code	Weight (kg)
75	32		32	<b>738 912 012</b>	0.750
90	32 - 50	32	40 - 50	<b>738 912 013</b>	0.895
110	40 - 63	40 - 50	63	<b>738 912 014</b>	0.904
125	63 - 75	63	75	<b>738 912 015</b>	1.103
140	75 - 90	75	90	<b>738 912 016</b>	1.188
160	90 - 110	90	110	<b>738 912 017</b>	1.177
180	110	110		<b>738 912 018</b>	1.530
200	140		140	<b>738 912 019</b>	1.600
225	140	140		<b>738 912 020</b>	1.813
250	160	160		<b>738 912 021</b>	1.957
315	225	225		<b>738 912 023</b>	2.388
355	250	250		<b>738 912 024</b>	2.388

D (mm)	d (mm)	L (mm)	H (mm)	max Force COOL-FIT 4.0 (kN)	max Force COOL-FIT 2.0 (kN)
75	32	150	60		2.0
90	32 - 50	170	60	2.0	3.0 / 5.0
110	40 - 63	180	60	3.0 / 5.0	8.0
125	63 - 75	215	60	8.0	10.0
140	75 - 90	220	60	10.0	10.0
160	90 - 110	255	60	10.0	10.0
180	110	255	60	10.0	
200	140	310	60		10.0

table continued on the next page



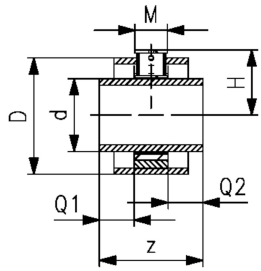
D (mm)	d (mm)	L (mm)	H (mm)	max Force COOL-FIT 4.0 (kN)	max Force COOL-FIT 2.0 (kN)
225	140	310	60	10.0	
250	160	335	60	10.0	
315	225	400	60	10.0	
355	250	420	60	10.0	



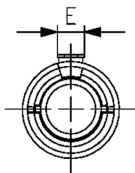
### COOL-FIT 4.0 Fixpoint kit for high forces

#### Model:

- The product consists of fixpoint, pipe section and insulation kit
- Fixed point for installation between two electrofusion fittings, transmits the forces emanating from the pipe to the fixed point
- Pipe section PE100 SDR11, metric
- Fixpoint with welding plate made from S235JR (1.0038). With corrosion protection coating
- Insulation made from EPDM soft foam. For outdoor application use additional protection
- Please take note of the maximum allowed forces for this version in the table below.
- A force calculation of the fixpoint clamp and the attachment point is required
- For the bonding, adhesive 738010060 is recommended
- Availability: d160-d315 January 2023. d355 to d450 on request with delivery time of 3 month.



d (mm)	D (mm)	DN (mm)	SDR	PN (bar)	Code	Weight (kg)
140	225	125	11	16	<b>738 913 816</b>	6.382
160	250	150	11	16	<b>738 913 817</b>	6.386
225	315	200	11	16	<b>738 913 820</b>	7.479
250	355	250	11	16	<b>738 913 821</b>	10.856
280	400	250	11	16	<b>738 913 822</b>	14.172
315	450	300	11	16	<b>738 913 823</b>	16.272



d (mm)	z (mm)	Q1 (mm)	Q2 (mm)	Dos (mm)	H (mm)	M (mm)	E (mm)	Wrench size (mm)	max. Force (kN)
140	268	84	84	251	136.5	100	100	24	35
160	280	90	90	283	165.5	100	100	24	35
225	320	110	110	360	205.0	100	100	24	35
250	346	123	123	391	213.5	100	100	24	35
280	352	126	126	436	231.0	100	100	24	35
315	366	133	133	486	279.0	100	180	24	35



### COOL-FIT Y cables kit

- The COOL-FIT Y cables are used to speed up the installation of the fixed points electrofusion tapes. The Y cables allow the welding in parallel of 2 E-Tapes, halving the total duration of the fusion process.
- Compatible with all MSA Units

Type	Code	Weight (kg)
4 leads cable with 2mm plugs in output	<b>790 156 032</b>	0.385

## Hand scraper



- The Hand Scraper can be used to prepare the fusion zone on PE80 pipes.

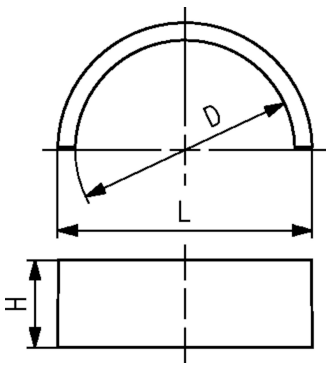
Description	Code	Weight (kg)
Hand scraper with long handle	<b>799 198 094</b>	0.143



## COOL-FIT 4.0F fixed point set

### Model:

- Four PVC-U half shells as permanent connection to transmit the forces that occur in the pipe to the fixed point.
- For cementing use Tangit RAPID, Tangit RAPID static mixer and Tangit RAPID dispenser
- Please take note of the maximum allowed forces for this version in the table below.
- Fixed point brackets and cross braces have to be calculated and obtained by the installer. They are not included in the fixed point set from GF.**



d (mm)	D (mm)	Code	SP	Weight (kg)	L (mm)	H (mm)	max Force (kN)	Closest inch (inch)
160	250	<b>738 912 321</b>	1	1.957	284	35	10.0	10
225	315	<b>738 912 323</b>	1	2.388	356	35	10.0	12



## Tangit Rapid cartridges kit

- 2-Component-Adhesive
- For PVC-U and PVC-C
- Tangit Rapid Kit consists of 6 cartridges, 12 mixers and 2 plastic brushes
- Tool needed: Tangit Rapid dispenser and mixers
- Check chemical resistance list ([www.gfps.com](http://www.gfps.com))

Language	description	Code	Weight (kg)
DE, FR	50 ml	<b>799 302 005</b>	0.566
FR, NL	50 ml	<b>799 302 041</b>	0.566
DK, SE	50 ml	<b>799 302 042</b>	0.566
GB, IT	50 ml	<b>799 302 043</b>	0.566
FI, NO	50 ml	<b>799 302 044</b>	0.566
DE, ES, FR, GB, IT, NL, PT	400 ml	<b>799 302 007</b>	3.700
DK, FI, NO, SE	400 ml	<b>799 302 047</b>	3.700



## Tangit Rapid mixer set

- For Tangit Rapid cartridges
- Bag with 30 pieces for 50ml and 15 pieces for 400ml

description	Code	SP	Weight (kg)
50ml	<b>799 302 032</b>	1	0.160
400ml	<b>799 302 033</b>	1	0.190





### Tangit Rapid dispenser

- For Tangit Rapid cartridges

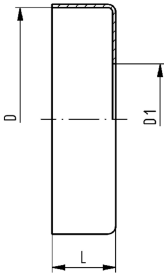
d-d (mm)	description	Code	SP	Weight (kg)
16 - 140	50ml	799 302 011	1	0.185
110 - 400	400ml	799 302 013	1	1.100



### COOL-FIT 4.0 Endcap

**Model:**

- To protect the insulation at the end of a COOL-FIT 4.0 piping system



d (mm)	D (mm)	D1 (mm)	Code	Weight (kg)	L (mm)	closest inch (inch)
250	355	265	733 960 185	0.155	35	10
280	400	300	733 960 186	0.185	35	10
315	450	335	733 960 187	0.225	35	12
355	500	370	733 963 188	0.269	35	14
400	560	420	733 963 189	0.269	35	16
450	630	470	733 963 190	0.269	35	18



### Sealant

**Model:**

- For sealing and gluing of insulation of Weld-in ports and caps
- Cartridge à 290 ml

	Code	SP	Weight (kg)
290 ml	738 011 103	1	0.473



### COOL-FIT 2.0/4.0 Adhesive cement

**Model:**

- For the jointing of NBR foam insulations of flexible hoses and transition fittings

	Code	SP	Weight (kg)
	738 010 060	1	0.240



### COOL-FIT 2.0/4.0 Adhesive tape

**Model:**

- For the jointing of NBR foam insulations of flexible hoses and transition fittings
- 30m on a roll

	Code	SP	Weight (kg)
	738 010 065	1	0.400



### Tangit KS Cleaner

- Special cleaner for plastic fusion connections in the material of PE, PP, PB, PVDF, ECTFE and PVC-U
- Suitable for Tangit Rapid. Must not be used for solvent cementing
- DVGW approved
- DW 5290 BR 0464

Size	Code	SP	Weight (kg)
1 liter	<b>799 298 023</b>	8	0.872

### Marker



Type	Code	Weight (kg)
silver	<b>799 350 364</b>	0.010

### Deburring tool

- Replacable blade



Code	SP	Weight (kg)
<b>790 205 082</b>	1	0.058

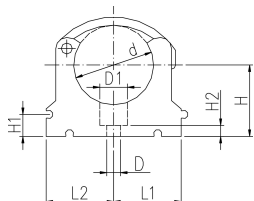
### Measuring tape (circumference and diameter)

- Circumference: 2 m / 79 inch
- Diameter: 630 mm / 25 inch



Code	SP	Weight (kg)
<b>790 205 087</b>	1	0.045

## KLIP-IT pipe clip type 061 PP metric

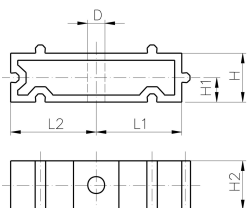


### Model:

- Material: clip and safety clip PP black, UV resistant
- d16 - d63: height designed for ball valve type 546 and 543
- **Minimum order quantity: standard packagings SP**

	d	D	d	D1	Code	SP	Weight
	(mm)	(mm)	(inch)	(mm)			(kg)
*	10	5		8	<b>167 061 003</b>	10	0.003
*	12	5		8	<b>167 061 004</b>	10	0.003
*	16	6		11	<b>167 061 035</b>	10	0.007
*	20	6		11	<b>167 061 036</b>	10	0.007
*	25	6		11	<b>167 061 037</b>	10	0.009
*	32	6		11	<b>167 061 038</b>	10	0.012
	40	7		14	<b>167 061 039</b>	10	0.027
	50	7		14	<b>167 061 040</b>	10	0.031
	63	9		17	<b>167 061 041</b>	10	0.052
	75	9	2 ½	17	<b>167 061 012</b>	10	0.057
	90	9	3	17	<b>167 061 013</b>	10	0.092
	110	9	4	17	<b>167 061 014</b>	10	0.117
	125	9		17	<b>167 061 015</b>	10	0.180
	140	9	5	17	<b>167 061 016</b>	10	0.224
	160	9		17	<b>167 061 017</b>	10	0.242

	d	H	H1	H2	H3	L1	L2	SC	closest
	(mm)	(mm)	(mm)	(mm)	(mm)	(mm)	(mm)		inch
									(inch)
*	10	20	10	6	12	11	14	M4	⅛
*	12	21	10	6	12	11	14	M5	¼
*	16	27	10	6	16	14	17	M5	⅜
*	20	27	10	6	16	17	19	M5	½
*	25	30	10	6	16	19	22	M5	¾
*	32	36	10	6	16	24	27	M5	1
	40	44	10	7	22	34	34	M6	1 ¼
	50	51	10	7	22	37	37	M6	1 ½
	63	64	10	10	25	45	45	M8	2
	75	58	10	10	25	52	52	M8	2 ½
	90	65	10	10	28	65	65	M8	3
	110	75	10	10	28	79	79	M8	4
	125	90	10	10	32	88	88	M8	
	140	110	10	10	32	98	98	M8	5
	160	108	10	10	32	109	109	M8	6



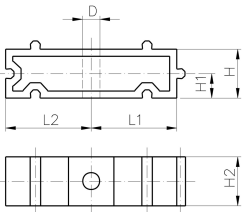
## KLIP-IT spacer type 061 PP

### Model:

- For pipe clips type 061/061H, PP black, UV resistant
- **Minimum order quantity: standard packaging SP**

d	Inch	Code	SP	Weight	D	L1	L2	H	H1	H2	SC
(mm)	(inch)			(kg)	(mm)	(mm)	(mm)	(mm)	(mm)	(mm)	
10 - 12	⅛ - ¼	<b>167 061 153</b>	10	0.003	5	11	14	20	10	12	M4
16	⅜	<b>167 061 155</b>	10	0.005	6	14	17	20	10	16	M5
20	½	<b>167 061 156</b>	10	0.005	6	17	19	20	10	16	M5
25	¾	<b>167 061 157</b>	10	0.007	6	19	22	20	10	16	M5
32	1	<b>167 061 158</b>	10	0.006	6	24	27	20	10	16	M5
40	1 ¼	<b>167 061 159</b>	10	0.015	7	34	34	20	10	22	M6
50	1 ½	<b>167 061 160</b>	10	0.017	7	37	37	20	10	22	M6
63	2	<b>167 061 161</b>	10	0.020	9	45	45	20	10	25	M8
75	2 ½	<b>167 061 162</b>	10	0.027	9	52	52	20	10	25	M8
90	3	<b>167 061 163</b>	10	0.039	9	65	65	20	10	28	M8

table continued on the next page



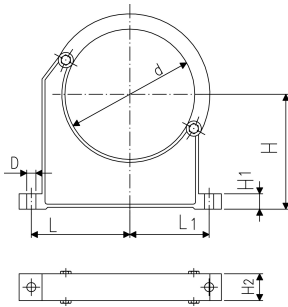
d (mm)	Inch (inch)	Code	SP	Weight (kg)	D (mm)	L1 (mm)	L2 (mm)	H (mm)	H1 (mm)	H2 (mm)	SC
110	4	167 061 164	10	0.048	9	79	79	20	10	28	M8
125	4 ½	167 061 165	10	0.059	9	88	88	20	10	32	M8
140	5	167 061 166	10	0.065	9	98	98	20	10	32	M8
160	6	167 061 167	10	0.071	9	109	109	20	10	32	M8



### Pipe clip type 060 PP metric

#### Model:

- Material: clip and safety clip PP black, UV resistant
- **Minimum order quantity: standard packaging SP or gross packaging GP**
- Accidental opening of the safety clip is not possible
- Clip and safety clip are not assembled in the packaging.
- Pipes with flanges can be installed directly



d (mm)	D (mm)	Code	SP	Weight (kg)	L (mm)	L1 (mm)	H (mm)	H1 (mm)	H2 (mm)	SC	closest inch (inch)
90	9	167 060 038	10	0.144	89	71	105	15	33	M 8	3
110	9	167 060 039	10	0.158	94	80	115	15	33	M 8	4
125	11	167 060 040	10	0.249	116	91	130	20	35	M10	
140	11	167 060 041	10	0.260	121	99	130	20	35	M10	5
160	11	167 060 042	10	0.296	131	107	148	20	35	M10	6
180	11	167 060 043	10	0.327	143	115	163	20	35	M10	7
200	13	167 060 019	5	0.539	151	120	175	25	39	M12	8
225	13	167 060 020	5	0.612	164	132	175	25	39	M12	8
250	13	167 060 021	5	0.657	183	143	200	25	39	M12	9
280	13	167 060 022	5	0.722	197	156	200	25	39	M12	10
315	13	167 060 023	5	0.805	219	171	225	25	39	M12	12
355	17	167 060 024	5	1.251	275	209	258	30	50	M16	14
400	17	167 060 025	4	1.031	300	228	288	30	50	M16	16

# COOL-FIT 4.0 Heat tracing



## Self regulating heating cable

### Model:

- for pipe freeze protection
- cut to length on site
- suitable for in-pipe applications (inside the medium)
- zero maintenance after installation and commissioning
- no risk of overheating due to self-regulating technology
- Cables featuring self-regulating technology. The heat output automatically adjusts depending on the local temperature at every point along its length. It never overheats even when overlapping

L (m)	Code	Weight (kg)
200	<b>790 738 001</b>	14.400
62	<b>790 738 003</b>	4.460
40	<b>790 738 005</b>	2.280
20	<b>790 738 007</b>	1.440



## Electronic Controller for pipe freeze protection

The controller is designed to provide userfriendly measurement and control for the self regulating heating cable for COOL-FIT. The Controller has a 25 A control relay and an SPDT alarm relay. Parameter and eventual alarm conditions are shown on the digital display and settings can be programmed easily even without power supply. The controller is supplied with an NTC temperature sensor for efficient media temperature sensing, and mountable DIN rail 35mm for easy mounting on walls.

### Model:

- Easy set-up and programming of the unit
- Flexible temperature control of pipe freeze protection
- Media temperature sensing and/or ambient temperature sensing
- Proportional Ambient Sensing Control (PASC) algorithm for enhanced energy savings in ambient sensing mode
- Alarm relay with change over contact to signal power, temperature or communication problems
- Pipe temperature monitoring with high and low temperature alarm
- On wall mountable for outdoor location

Code
<b>790 738 031</b>



## Cable gland

- For the leading the heating inside and outside the COOL-FIT 4.0 piping via threaded fitting

### Model:

- Material: brass
- threaded connection: 3/4 " male thread R

R (inch)	Code	Weight (kg)
3/4	<b>790 738 020</b>	0.146



### Cold lead connection and end seal kit

- For heating cables for COOL-FIT

**Model:**

- Heat-shrink technique

**Inclusive:**

- Crimps
- Cold lead shrinkable sleeves
- End seal shrinkable sleeves
- Mastic

**Code Weight**  
(kg)

**790 738 010** 0.045

---

# COOL-FIT 4.0 Tools



## COOL-FIT 2.0/4.0 Foam removal and peeling tool

**Model:**

- Tool for foam removal and peeling of COOL-FIT 2.0 and 4.0 pipes

d (mm)	Code	Weight (kg)	SDR
32-90	<b>799 738 001</b>	10.500	SDR11
110-225	<b>799 738 003</b>	16.500	d110+d140 SDR11; d160+d225 SDR17
250-450	<b>799 738 004</b>	71.000	SDR17



## COOL-FIT 2.0/4.0 Upgrade kit foam removal and peeling tool d140-d225

**Model:**

- Upgrade for COOL-FIT 2.0/4.0 foam removal and peeling tool d110-d225 (799738003)
- For easier foam removal and peeling of COOL-FIT 2.0 and 4.0 pipes in the dimensions d140-d225

**Note:**

Spindle and clamping shoes are to be used of COOL-FIT 2.0/4.0 foam removal and peeling tool 799738003

d (mm)	Code	Weight (kg)
140-225	<b>799 738 013</b>	50.000



## COOL-FIT 2.0/4.0 Foam removal and peeling tool SDR11

**Model:**

- Tool for foam removal and peeling of COOL-FIT 2.0 and 4.0 pipes

d (mm)	Code	Weight (kg)	SDR
110-225	<b>799 738 015</b>	16.500	SDR11
250-450	<b>799 738 016</b>	71.000	SDR11



## COOL-FIT 4.0 Clamping shoe set d250-d450, SDR11

- Suitable for COOL-FIT 2.0/4.0 foam removal and peeling tool (799 738 004)
- Case incl. lid containing clamping shoes, blade holder and accessories

d (mm)	Code	Weight (kg)	SDR
250 - 450	<b>799 738 161</b>	60.000	SDR11

## MSA 2.1 Automatic Electrofusion Unit with protocols retrieval



The MSA 2.1 automatic electro fusion unit combines light weight and high efficiency, thanks to its inverter technology and furthermore provides fusion documentation in PDF. The unit is extremely fast and simple, with three basic operations required to operator: connect, scan, start the fusion. It is robust, safe and ergonomic.

All is meant to simplify the job: the barcode scanner, for long distance reading, the cooling system to joint in series, the icon system, to keep the interaction between user and machine intuitive. The entire welding process is controlled and regulated with energy output compensation depending on ambient temperature and the indication of cooling time.

The internal Bluetooth Low Energy device offers the possibility to enter data, monitor the fusion from remote and collect the data recorded via wireless with consumer smartphones, to send them to the headquarter even in real time.

The unit has 1000 protocols permanently stored in the internal memory. The user can copy the fusion reports in an USB stick to print them out in PDF format.

Scope of delivery includes: transport box, angle adapters (4.0 mm and 4.7 mm), operating instructions, START/STOP badge and USB memory stick with PC applications.

### Technical Data:

- Operating temperature: -20°C to +50°C
- Mains voltage and frequency: 230V (190V - 265V), 50-60Hz
- Fusion voltage: 8-42 V (48 V)
- Fusion data input mode: bar code, manual
- Fusion current: 90 A (max)
- Suggested power generators: 3.5 kVA
- USB Port: Type A
- Protection factor: Class 1 / IP 65
- Mains cable: 4 m / Fusion cable: 4 m
- Weight: ca. 11.9 kg
- Display: Graphical LCD, adjustable contrast
- Independent from languages
- Bluetooth radio interface

	Type	Code	Weight (kg)
Barcode scanner, transport case, mini Welding Book		<b>790 156 003</b>	11.900
Barcode scanner, transport case, mini Welding Book, Swiss plug		<b>790 156 006</b>	11.900
Barcode scanner, transport case, mini Welding Book, 8m fusion cable		<b>790 156 010</b>	12.900
Barcode scanner, transport case, mini Welding Book, German version		<b>790 156 009</b>	19.500



### Long adapters

- Adapters for Electrofusion units with 4 mm connectors.
- Longer version, suitable for all COOL-FIT 4.0 dimensions.

Type	Code	Weight (kg)	Description
4,0 mm	<b>790 128 035</b>	0.058	Angle adapters pair, black





### COOL-FIT 2.0/4.0 Installation tool weld-in port

#### Model:

- Tool for the installation of weld-in ports to COOL-FIT pipes
- Complete: toolcase equipped with all necessary tool components to install weld-in ports 1/2"-1" and d16-d50
- Basic: toolcase equipped with all necessary tool components to install weld-in ports 1/2"-1" and d16-d32 and the possibility to upgrade with d40+d50
- Upgrade kit: kit to upgrade basic tool to complete tool
- Version 230V with AC power plug CEE 7/4 (Schuko)
- Version 110V with AC power plug NEMA 5-15 grounded (Type B)

#### Note:

For pipes COOL-FIT 2.0, COOL-FIT 2.0F, COOL-FIT 4.0 and COOL-FIT 4.0F of the dimension d63-d225

Description	Voltage	Code	Weight (kg)
Komplett	230 V	<b>799 738 300</b>	20.000
Basis	230 V	<b>799 738 301</b>	14.100
Komplett	110 V	<b>799 738 302</b>	20.000
Basis	110 V	<b>799 738 303</b>	14.100
upgrade kit		<b>799 738 310</b>	6.600



#### Clamping tool

##### Double, multi size with universal link

- Recommended for the installation of fittings ELGEF Plus and ecoFIT d40 - 200 and d160 - 630mm
- Recommended for the installation of fittings COOL-FIT d32/D75 - d140/D200 and d160/D250 - d450/D630
- The clamping allows installation without tension and avoids movement during fusion and cooling time
- The centrally located adjustable universal link allows installation of electrofusion couplers, elbows and reducers
- Works above, below and alongside the joint
- Adaptor for use with Tee-pieces available (see accessories)

d (mm)	d1 (mm)	Code	Weight (kg)
40	200	<b>799 301 490</b>	4.200
160	630	<b>799 301 496</b>	14.100

d (mm)	Description	Length (mm)	Width (mm)	Height (mm)
40	Scope of delivery: 2 x V-block, 2 x Straight bar, 1 x Universal link, Transport bag (600x380x250)	900	290	230
160	Scope of delivery: 2 x V-block, 2 x Straight bar, 1 x Universal link, Transport bag (780x780x580)	1300	670	550



### Clamping tool Quadruple, multi size with universal link

- Recommended for the installation of fittings ELGEF Plus and ecoFIT d40 - 200 and d160 - 630mm
- Recommended for the installation of fittings COOL-FIT d32/D75 - d140/D200 and d160/D250 - d450/D630
- The clamping allows installation without tension and avoids movement during fusion and cooling time
- The centrally located adjustable universal link allows installation of electrofusion couplers, elbows and reducers
- Universal use; works above, below and alongside the joint
- Adaptor for use with Tee-pieces available (see accessories)

d (mm)	d1 (mm)	Code	Weight (kg)
40	200	<b>799 301 489</b>	8.300
160	630	<b>799 301 495</b>	23.300

d (mm)	Description	Length (mm)	Width (mm)	Height (mm)
40	Scope of delivery: 4 x V-block, 2 x Straight bar, 1 x Universal link	900	290	230
160	Scope of delivery: 4 x V-block, 2 x Straight bar, 1 x Universal link	1300	670	550



### Tee adaptor

- Suitable for clamping tool (799301495)

d (mm)	d1 (mm)	Code	Weight (kg)	Description	Length (mm)	Width (mm)	Height (mm)
40	200	<b>799 301 491</b>	0.610	Tee adaptor	600	50	40
160	630	<b>799 301 497</b>	3.500	Tee adaptor	1070	75	60



### V-block

- Suitable for clamping tool (799301495)

d (mm)	d1 (mm)	Code	Weight (kg)	Description	Length (mm)	Width (mm)	Height (mm)
40	200	<b>799 301 492</b>	1.000	V-block complete	290	230	65
160	630	<b>799 301 498</b>	3.200	V-block complete	660	430	90



### Bar extension

- Suitable for clamping tool (799301495)

d (mm)	d1 (mm)	Code	Weight (kg)	Description	Length (mm)	Width (mm)	Height (mm)
160	630	<b>799 301 499</b>	1.000	Bar extension	1000	40	40

# COOL-FIT 4.0 Spare parts



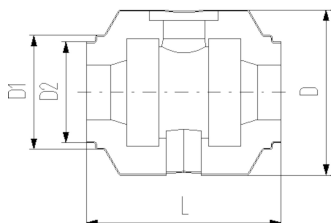
## COOL-FIT 2.0/4.0 Insulation for ball valve type 546 / 542

**Model:**

- Set consisting of half shells and clamps

**Note:**

Suitable for COOL-FIT ball valve only



d (mm)	D (mm)	DN (mm)	Code	Weight (kg)	D1 (mm)	D2 (mm)	L (mm)
32	135	25	<b>738 990 308</b>	0.160	97	82	152
40	157	32	<b>738 990 309</b>	0.228	117	97	170
50	169	40	<b>738 990 310</b>	0.282	117	97	184
63	204	50	<b>738 990 311</b>	0.498	132	117	227
75	235	65	<b>738 990 312</b>	0.935	147	132	276
90	255	80	<b>738 990 313</b>	1.033	168	147	297



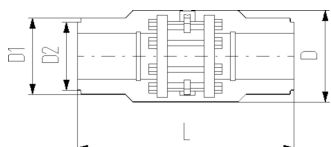
## COOL-FIT 2.0/4.0 Insulation for Butterfly Valve Type 567

**Model:**

- Set consisting of half shells and clamps

**Note:**

Suitable for COOL-FIT butterfly valve only



d (mm)	D (mm)	DN (mm)	Code	Weight (kg)	D1 (mm)	D2 (mm)	L (mm)
110	310	100	<b>738 990 324</b>	2.054	188	168	556
140	287	125	<b>738 990 326</b>	2.947	233	208	662
160	358	150	<b>738 990 327</b>	3.675	259		720
225	409	200	<b>738 990 330</b>	4.811	325		776



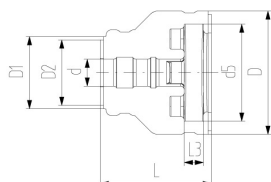
## COOL-FIT 2.0/4.0 Insulation for flange adaptor

**Model:**

- Set consisting of half shells and clamps

**Note:**

Suitable for COOL-FIT flange adaptor only



d (mm)	D (mm)	DN (mm)	Code	Weight (kg)	D1 (mm)	D2 (mm)	L (mm)	L3 (mm)	d5 (mm)
32	135	25	<b>738 990 458</b>	0.226	90	75	162	26	121
40	170	32	<b>738 990 459</b>	0.331	110	90	165	28	146
50	180	40	<b>738 990 460</b>	0.386	110	90	178	30	156
63	200	50	<b>738 990 461</b>	0.533	125	110	230	32	171
75	220	65	<b>738 990 462</b>	0.674	140	125	232	34	191
90	240	80	<b>738 990 463</b>	0.754	160	140	245	35	206
110	270	100	<b>738 990 464</b>	0.889	180	160	254	36	235
140	300	125	<b>738 990 466</b>	1.138	225	200	299	38	256
160	358	150	<b>738 990 467</b>	2.820	259		332	34	295
225	423	200	<b>738 990 470</b>	3.710	325		383	37	354



### COOL-FIT 4.0 Insulation for adaptor fittings PE-metal thread

**Model:**

- Set consisting of half shells and clamps
- Type A: Female thread RP, NPT, loose nut G
- Type B: Male thread R, NPT
- Type C: Both female and male thread

d (mm)	Code	Weight (kg)	Type
32	<b>738 990 408</b>	0.064	A
32	<b>738 990 418</b>	0.045	B
40	<b>738 990 409</b>	0.083	C
50	<b>738 990 410</b>	0.093	C
63	<b>738 990 411</b>	0.111	C



### COOL-FIT 4.0 Insulation for adaptor union PE-PE

**Model:**

- Set consisting of half shells and clamps

d (mm)	Code	Weight (kg)
32	<b>738 990 428</b>	0.106
40	<b>738 990 429</b>	0.166
50	<b>738 990 430</b>	0.188
63	<b>738 990 431</b>	0.109



### COOL-FIT 4.0 Insulation for adaptor union PE-ABS

**Model:**

- Set consisting of half shells and clamps

d (mm)	Code	Weight (kg)
32	<b>738 990 438</b>	0.088
40	<b>738 990 439</b>	0.107
50	<b>738 990 440</b>	0.126
63	<b>738 990 441</b>	0.178
75	<b>738 990 442</b>	0.374
90	<b>738 990 443</b>	0.493
110	<b>738 990 444</b>	0.597



### COOL-FIT 4.0 Insulation for welding indicator-kit

**Model:**

- Type A suitable for COOL-FIT 4.0 Fittings d32-d110
- Type B suitable for COOL-FIT 4.0 Fittings d160 and coupler d225
- Type C suitable for COOL-FIT 4.0 Fittings d225 except coupler

d (mm)	Code	Weight (kg)	Type	pieces/kit
32 - 110	<b>738 010 052</b>	0.090	A	20
140 - 225	<b>738 010 053</b>	0.200	B	10
225	<b>738 010 054</b>	0.033	C	10



### Peeling blade d32-d90

- Suitable for COOL-FIT 2.0/4.0 foam removal and peeling tool (799 738 001)

d (mm)	Code	Weight (kg)
32	<b>799 738 101</b>	0.015
40	<b>799 738 102</b>	0.020
50	<b>799 738 103</b>	0.019
63	<b>799 738 104</b>	0.020
75	<b>799 738 105</b>	0.020
90	<b>799 738 106</b>	0.030



### Peeling blade d110-d225

- Suitable for COOL-FIT 2.0/4.0 foam removal and peeling tool (799 738 003)

d (mm)	Code	Weight (kg)
110	<b>799 738 107</b>	0.100
140	<b>799 738 108</b>	0.100
160	<b>799 738 109</b>	0.100
225	<b>799 738 110</b>	0.100



### Replacement blade foam separator

- Suitable for COOL-FIT 2.0/4.0 foam removal and peeling tool (799 738 004) and upgrade kit d140-d225 (799 738 013)

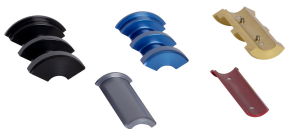
Code	Weight (kg)	Suitable for
<b>799 738 115</b>	0.100	799 738 004
<b>799 738 117</b>	0.080	799 738 013



### O-Ring for clamping shoe

- Suitable for COOL-FIT 2.0/4.0 foam removal and peeling tool (799 738 001 and 799 738 003)

d (mm)	Code	Weight (kg)
32	<b>799 738 050</b>	0.003
110	<b>799 738 051</b>	0.010



### Clamping shoe d32-d90

- Suitable for COOL-FIT 2.0/4.0 foam removal and peeling tool (799 738 001)

d (mm)	Code	Weight (kg)	Colour
32	<b>799 738 020</b>	0.240	silver
40	<b>799 738 021</b>	0.090	red
50	<b>799 738 022</b>	0.210	anthracite
63	<b>799 738 023</b>	0.120	gold
75	<b>799 738 024</b>	0.270	blue
90	<b>799 738 025</b>	0.480	black



### Clamping shoe d110-d225

- Suitable for COOL-FIT 2.0/4.0 foam removal and peeling tool (799 738 003)
- Type A: Spindle start
- Type B: With pipe stop

d (mm)	Code	Weight (kg)	Colour	Type
110	<b>799 738 026</b>	0.680	silver	
140	<b>799 738 027</b>	0.480	red	A
140	<b>799 738 037</b>	0.480	red	B
160	<b>799 738 028</b>	0.580	anthracite	A
160	<b>799 738 038</b>	0.580	anthracite	B
225	<b>799 738 029</b>	0.600	gold	A
225	<b>799 738 039</b>	0.600	gold	B



### Clamping shoe d250-d450, SDR17

- Suitable for COOL-FIT 2.0/4.0 foam removal and peeling tool (799 738 004)
- Type A: Spindle start
- Type B: With pipe stop

d (mm)	Code	Weight (kg)	Colour	Type
250	<b>799 738 042</b>	0.240	silver	A
250	<b>799 738 052</b>	0.240	silver	B
280	<b>799 738 043</b>	0.265	red	A
280	<b>799 738 053</b>	0.315	red	B
315	<b>799 738 044</b>	0.300	anthracite	A
315	<b>799 738 054</b>	0.350	anthracite	B
355	<b>799 738 045</b>	0.370	gold	A
355	<b>799 738 055</b>	0.430	gold	B
400	<b>799 738 046</b>	0.450	blue	A
400	<b>799 738 056</b>	0.520	blue	B
450	<b>799 738 047</b>	0.550	black	A
450	<b>799 738 057</b>	0.600	black	B



### Clamping shoe d110-d225

- <sup>1)</sup>Suitable for COOL-FIT 2.0/4.0 foam removal and peeling tool (799 738 003)
- <sup>2)</sup>Suitable for COOL-FIT 2.0/4.0 foam removal and peeling tool (799 738 015)
- Type A: Spindle start
- Type B: With pipe stop

Remarks	d (mm)	Type	Code	Weight (kg)	Colour	SDR
	1,2	110	<b>799 738 026</b>	0.680	silver	SDR11
	1,2	140	<b>799 738 027</b>	0.480	red	SDR11
	1,2	140	<b>799 738 037</b>	0.480	red	SDR11
	1	160	<b>799 738 028</b>	0.580	anthracite	SDR17
	1	160	<b>799 738 038</b>	0.580	anthracite	SDR17
	2	160	<b>799 738 121</b>	0.580	anthracite	SDR11
	2	160	<b>799 738 122</b>	0.580	anthracite	SDR11
	1	225	<b>799 738 029</b>	0.600	gold	SDR17
	1	225	<b>799 738 039</b>	0.600	gold	SDR17
	2	225	<b>799 738 123</b>	0.600	gold	SDR11
	2	225	<b>799 738 124</b>	0.600	gold	SDR11



### Clamping shoe d110-d225

- <sup>1)</sup>Suitable for COOL-FIT 2.0/4.0 foam removal and peeling tool (799 738 003)
- <sup>2)</sup>Suitable for COOL-FIT 2.0/4.0 foam removal and peeling tool (799 738 015)
- Type A: Spindle start
- Type B: With pipe stop

Remarks	d (mm)	Type	Code	Weight (kg)	Colour	SDR
	1,2	110	<b>799 738 026</b>	0.680	silver	SDR11
	1,2	140	<b>A 799 738 027</b>	0.480	red	SDR11
	1,2	140	<b>B 799 738 037</b>	0.480	red	SDR11
	1	160	<b>A 799 738 028</b>	0.580	anthracite	SDR17
	1	160	<b>B 799 738 038</b>	0.580	anthracite	SDR17
	2	160	<b>A 799 738 121</b>	0.580	anthracite	SDR11
	2	160	<b>B 799 738 122</b>	0.580	anthracite	SDR11
	1	225	<b>A 799 738 029</b>	0.600	gold	SDR17
	1	225	<b>B 799 738 039</b>	0.600	gold	SDR17
	2	225	<b>A 799 738 123</b>	0.600	gold	SDR11
	2	225	<b>B 799 738 124</b>	0.600	gold	SDR11

### Circular blade



- Suitable for COOL-FIT 2.0/4.0 foam removal and peeling tool (799 738 001 and 799 738 003)

Code	Weight (kg)
<b>799 738 040</b>	0.008

### Circular blade-Set



- Suitable for COOL-FIT 2.0/4.0 foam removal and peeling tool (799738001 and 799738003)
- Consists of: Circular blade, holder and screw

d (mm)	Code	Weight (kg)
32 - 90	<b>799 738 048</b>	0.025
110 - 225	<b>799 738 049</b>	0.025

### Saw blade rotary saw



- Suitable for COOL-FIT 2.0/4.0 foam removal and peeling tool (799 738 004)

Code	Weight (kg)
<b>799 738 114</b>	0.010

### Saw



- Suitable for COOL-FIT 2.0/4.0 foam removal and peeling tool (799 738 003)

d (mm)	Code	Weight (kg)
140 - 225	<b>799 738 060</b>	1.000



### Saw blade

- Suitable for COOL-FIT 2.0/4.0 foam removal and peeling tool (799 738 003)

d (mm)	Code	Weight (kg)
140 - 225	<b>799 738 061</b>	0.029



### Locking pin

- Suitable for COOL-FIT 2.0/4.0 foam removal and peeling tool (799 738 004)

Code	Weight (kg)
<b>799 738 116</b>	0.250



### Spare blades for deburring tool

- 10 pieces

Code	SP	Weight (kg)
<b>790 205 083</b>	1	0.031



## Local support around the world

Visit our webpage to get in touch with your local specialist:

[www.gfps.com/our-locations](http://www.gfps.com/our-locations)



The information and technical data (altogether "Data") herein are not binding, unless explicitly confirmed in writing.  
The Data neither constitutes any expressed, implied or warranted characteristics, nor guaranteed properties or a guaranteed durability. All Data is subject to modification. The General Terms and Conditions of Sale of Georg Fischer Piping Systems apply.