

MP

**McWANE
POLES**

A GROUNDBREAKING ALTERNATIVE

TO CONVENTIONAL UTILITY POLES

► WHY McWANE DUCTILE IRON POLES?

LOW MAINTENANCE — McWane ductile iron poles are completely resistant to rot, insects, and woodpeckers, so they require less maintenance than other poles.

LOWER LIFE CYCLE COST — With a 75 year plus expected service life and low maintenance requirement, McWane Poles have a lower life cycle cost than other poles.

ENGINEERED CONSISTENCY — McWane Poles are engineered and manufactured for consistent strength and appearance, and, unlike wood, they will not shrink or warp over time.

SIMPLE INSTALLATION — McWane Poles weigh less than wood and much less than concrete poles and are much easier to drill than steel, concrete, and fiberglass.

LOW ENVIRONMENTAL IMPACT — McWane Poles are made of over 96 percent recycled material and are 100 percent recyclable, and they do not leach harmful chemicals.



McWANE POLES

IDEAL FOR THESE APPLICATIONS AND MANY MORE



▶ 69 kV



▶ Line Hardening



▶ Un-Guyed Angles



▶ Equipment Poles



▶ 161 kV H-Frame



▶ 115 kV



▶ Switch Poles



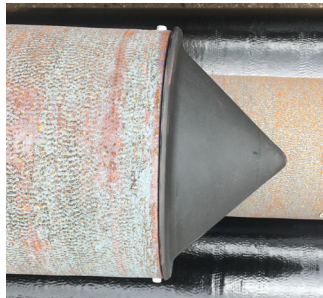
▶ Coastal Environments



▶ Un-Guyed Tap Poles

POLE FINISHES AND FEATURES

1 Pole Cap Options



▶ **Raptor Cap**
(Class H5 and Lower)



▶ **Flat Cap**
(Class H5 and Lower)



▶ **Ductile Iron Flat Cap**

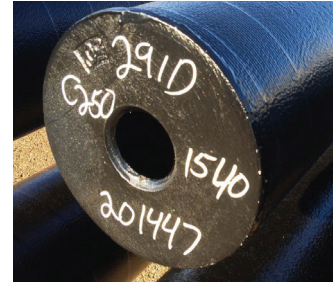
2 Ground Connection



3 Ground Plates



4 Base Plate



5 Pole Finish Options

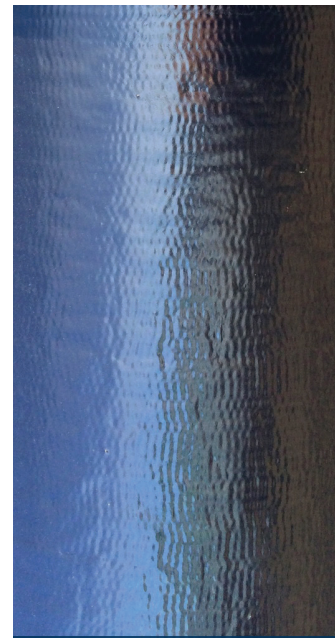


▶ **Weathered Finish**
Self-protecting finish

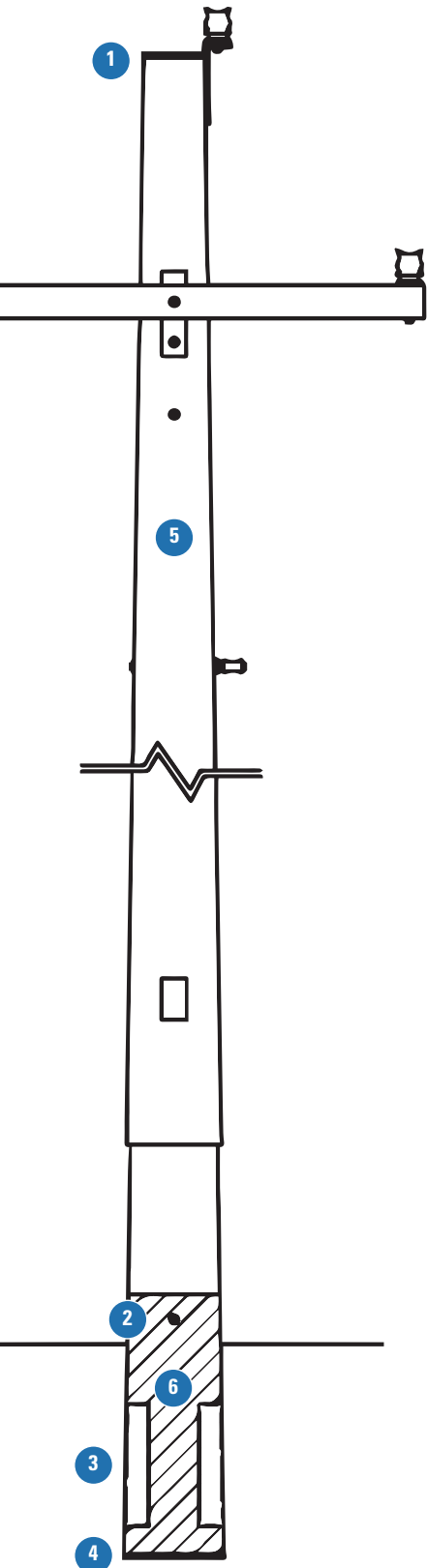


▶ **Coated Finish**
Arc-applied zinc base coat with gray acrylic top coat (brown and black also available).

6 Embed Coating



▶ **Ceramic Epoxy**
Applied internally and externally from base to 1' above ground standard



POLE SIZES AND INFORMATION

Class 3								
Feet	Part No.	Full Truck Qty. [2 Pcs.]	Stand. Weight (Lbs.)	Tip Dia. (In.)	Base Dia. (In.)	Allow. Tip Load (Kips)	Ground Line Capacity (Kip-Ft.)	Stand. Embed Depth (Ft.)
30	C3030	42	650	6.0	11.3	1.95	43.9	5.5
35	C3035	42	786	6.0	11.9	1.95	52.7	6.0
40	C3040	41	980	6.0	12.8	1.95	62.4	6.0
45	C3045	35	1139	6.0	13.8	1.95	71.2	6.5
50	C3050	31	1310	6.0	14.4	1.95	80.0	7.0
55	C3055	26	1549	6.0	15.3	1.95	88.7	7.5
60	C3060	23 [15]	1737	6.0	16.3	1.95	97.5	8.0
65	C3065	19 [12]	1937	6.0	17.2	1.95	106.3	8.5
70	C3070	16 [12]	2232	6.0	17.8	1.95	115.1	9.0
75	C3075	15 [12]	2529	6.0	18.4	1.95	123.8	9.5
80	C3080	13 [12]	2810	6.0	19.4	1.95	132.6	10.0
*	*	*	*	*	*	*	*	*
*	*	*	*	*	*	*	*	*
*	*	*	*	*	*	*	*	*

Class 2								
Feet	Part No.	Full Truck Qty. [2 Pcs.]	Stand. Weight (Lbs.)	Tip Dia. (In.)	Base Dia. (In.)	Allow. Tip Load (Kips)	Ground Line Capacity (Kip-Ft.)	Stand. Embed Depth (Ft.)
30	C2030	42	749	6.0	11.2	2.41	54.1	5.5
35	C2035	42	906	6.0	11.7	2.41	64.9	6.0
40	C2040	35	1137	6.0	12.7	2.41	77.0	6.0
45	C2045	30	1326	6.0	13.6	2.41	87.8	6.5
50	C2050	26	1530	6.0	14.6	2.41	98.6	7.0
55	C2055	22	1824	6.0	15.1	2.41	109.4	7.5
60	C2060	19 [15]	2055	6.0	16.0	2.41	120.3	8.0
65	C2065	16 [15]	2302	6.0	17.0	2.41	131.1	8.5
70	C2070	13 [12]	2665	6.0	17.5	2.41	141.9	9.0
75	C2075	12 [12]	2934	6.0	18.4	2.41	152.7	9.5
80	C2080	11 [12]	3218	6.0	19.4	2.41	163.5	10.0
85	C2085	[8]	3644	6.0	19.8	2.41	174.4	10.5
90	C2090	[8]	3939	6.0	20.8	2.41	185.2	11.0
95	C2095	[8]	4250	6.0	21.8	2.41	196.0	11.5

Class 1								
Feet	Part No.	Full Truck Qty. [2 Pcs.]	Stand. Weight (Lbs.)	Tip Dia. (In.)	Base Dia. (In.)	Allow. Tip Load (Kips)	Ground Line Capacity (Kip-Ft.)	Stand. Embed Depth (Ft.)
30	C1030	42	873	8.7	14.1	2.93	65.8	5.5
35	C1035	37	1048	8.7	14.5	2.93	79.0	6.0
40	C1040	30	1291	8.7	15.5	2.93	93.6	6.0
45	C1045	25	1481	8.7	16.5	2.93	106.8	6.5
50	C1050	22	1683	8.7	17.5	2.93	119.9	7.0
55	C1055	19	2039	8.7	17.9	2.93	133.1	7.5
60	C1060	16 [8]	2311	8.7	18.9	2.93	146.3	8.0
65	C1065	13 [8]	2597	8.7	19.9	2.93	159.4	8.5
70	C1070	11 [8]	3034	8.7	20.3	2.93	172.6	9.0
75	C1075	10 [8]	3332	8.7	21.3	2.93	185.7	9.5
80	C1080	9 [6]	3641	8.7	22.3	2.93	198.9	10.0
85	C1085	[6]	4149	8.7	22.7	2.93	212.1	10.5
90	C1090	[6]	4482	8.7	23.7	2.93	225.2	11.0
95	C1095	[6]	4826	8.7	24.7	2.93	238.4	11.5
*	*	*	*	*	*	*	*	*

Class H 1								
Feet	Part No.	Full Truck Qty. [2 Pcs.]	Stand. Weight (Lbs.)	Tip Dia. (In.)	Base Dia. (In.)	Allow. Tip Load (Kips)	Ground Line Capacity (Kip-Ft.)	Stand. Embed Depth (Ft.)
30	H1030	36	1018	8.7	14.1	3.51	79.0	5.5
35	H1035	30	1231	8.7	14.5	3.51	94.8	6.0
40	H1040	25	1526	8.7	15.5	3.51	112.3	6.0
45	H1045	23	1763	8.7	16.5	3.51	128.1	6.5
50	H1050	20	2016	8.7	17.5	3.51	143.9	7.0
55	H1055	17	2380	8.7	17.9	3.51	159.7	7.5
60	H1060	15 [8]	2654	8.7	18.9	3.51	175.5	8.0
65	H1065	12 [8]	2943	8.7	19.9	3.51	191.3	8.5
70	H1070	10 [8]	3369	8.7	20.3	3.51	207.1	9.0
75	H1075	10 [8]	3672	8.7	21.3	3.51	222.9	9.5
80	H1080	9 [6]	3988	8.7	22.3	3.51	238.7	10.0
85	H1085	[6]	4487	8.7	22.7	3.51	254.5	10.5
90	H1090	[6]	4825	8.7	23.7	3.51	270.3	11.0
95	H1095	[6]	5177	8.7	24.7	3.51	286.1	11.5
100	H1100	[6]	5808	8.7	25.3	3.51	301.9	12.0

▶ **BEST SOLUTION** “ Ductile Iron poles offer a unique combination of high value, incredible strength, light weight, durability, and flexibility, and they will not deteriorate like wood and concrete. They are more cost effective and do a better job than anything else the utility has come across. FKEC expects them to last a long, long time. ”

- Keith Kropf, PE - Director of Engineering at Florida Keys Electric Co-Op Association

▶ **EASY TO INSTALL** “ McWane Poles are much easier to work with. Only my two biggest line trucks can install concrete poles. This causes a backlog of work for pole installations. With McWane Poles, every line truck can perform an installation. ”

- Zane Howard, PE - Engineering Systems at Knoxville Utilities Board

*

Class poles are designed to wood pole equivalency, NESC Grade B construction.

Class H 2								
Feet	Part No.	Full Truck Qty. [2 Pcs.]	Stand. Weight (Lbs.)	Tip Dia. (In.)	Base Dia. (In.)	Allow. Tip Load (Kips)	Ground Line Capacity (Kip-Ft.)	Stand. Embed Depth (Ft.)
30	H2030	33	1151	8.7	14.2	4.16	93.6	5.5
35	H2035	28	1416	8.7	14.5	4.16	112.3	6.0
40	H2040	22	1730	8.7	15.5	4.16	133.1	6.0
45	H2045	19	1995	8.7	16.5	4.16	151.8	6.5
50	H2050	17	2280	8.7	17.5	4.16	170.6	7.0
55	H2055	14	2738	8.7	17.9	4.16	189.3	7.5
60	H2060	13 [8]	3047	8.7	18.9	4.16	208.0	8.0
65	H2065	10 [8]	3372	8.7	19.9	4.16	226.7	8.5
70	H2070	9 [8]	3864	8.7	20.3	4.16	245.4	9.0
75	H2075	8 [8]	4216	8.7	21.3	4.16	264.2	9.5
80	H2080	8 [6]	4583	8.7	22.3	4.16	282.9	10.0
85	H2085	[6]	5176	8.7	22.7	4.16	301.6	10.5
90	H2090	[6]	5579	8.7	23.7	4.16	320.3	11.0
95	H2095	[6]	6000	8.7	24.8	4.16	339.0	11.5
100	H2100	[6]	6626	8.7	25.3	4.16	357.8	12.0

Class H 3								
Feet	Part No.	Full Truck Qty. [2 Pcs.]	Stand. Weight (Lbs.)	Tip Dia. (In.)	Base Dia. (In.)	Allow. Tip Load (Kips)	Ground Line Capacity (Kip-Ft.)	Stand. Embed Depth (Ft.)
30	H3030	30	1330	8.7	14.2	4.88	109.7	5.5
35	H3035	25	1605	8.7	14.5	4.88	131.6	6.0
40	H3040	20	1971	8.7	15.5	4.88	156.0	6.0
45	H3045	17	2267	8.7	16.5	4.88	177.9	6.5
50	H3050	15	2584	8.7	17.5	4.88	199.9	7.0
55	H3055	13	3039	8.7	17.9	4.88	221.8	7.5
60	H3060	12 [8]	3384	8.7	18.9	4.88	243.8	8.0
65	H3065	9 [8]	3743	8.7	19.9	4.88	265.7	8.5
70	H3070	8 [8]	4290	8.7	20.3	4.88	287.6	9.0
75	H3075	7 [8]	4680	8.7	21.3	4.88	309.6	9.5
80	H3080	7 [6]	5088	8.7	22.3	4.88	331.5	10.0
85	H3085	[6]	5734	8.7	22.7	4.88	353.4	10.5
90	H3090	[6]	6169	8.7	23.7	4.88	375.4	11.0
95	H3095	[6]	6624	8.7	24.8	4.88	397.3	11.5
100	H3100	[6]	7391	8.7	25.3	4.88	419.7	12.0

Class H 4								
Feet	Part No.	Full Truck Qty. [2 Pcs.]	Stand. Weight (Lbs.)	Tip Dia. (In.)	Base Dia. (In.)	Allow. Tip Load (Kips)	Ground Line Capacity (Kip-Ft.)	Stand. Embed Depth (Ft.)
30	H4030	20	1506	11.4	16.9	5.66	127.2	5.5
35	H4035	20	1787	11.4	17.2	5.66	152.7	6.0
40	H4040	18	2210	11.4	18.2	5.66	181.0	6.0
45	H4045	16	2523	11.4	19.2	5.66	206.4	6.5
50	H4050	14	2855	11.4	20.3	5.66	231.9	7.0
55	H4055	12	3349	11.4	20.6	5.66	257.3	7.5
60	H4060	11 [8]	3704	11.4	21.7	5.66	282.8	8.0
65	H4065	9 [6]	4077	11.4	22.7	5.66	308.2	8.5
70	H4070	7 [6]	4674	11.4	23.1	5.66	333.6	9.0
75	H4075	7 [6]	5081	11.4	24.1	5.66	359.1	9.5
80	H4080	6 [6]	5506	11.4	25.1	5.66	384.5	10.0
85	H4085	[6]	6214	11.4	25.5	5.66	410.0	10.5
90	H4090	[6]	6676	11.4	26.5	5.66	435.4	11.0
95	H4095	[6]	7158	11.4	27.5	5.66	460.9	11.5

Class H 5								
Feet	Part No.	Full Truck Qty. [2 Pcs.]	Stand. Weight (Lbs.)	Tip Dia. (In.)	Base Dia. (In.)	Allow. Tip Load (Kips)	Ground Line Capacity (Kip-Ft.)	Stand. Embed Depth (Ft.)
30	H5030	20	1506	11.4	16.9	6.50	146.3	5.5
35	H5035	20	1787	11.4	17.2	6.50	175.5	6.0
40	H5040	18	2262	11.4	18.2	6.50	208.0	6.0
45	H5045	15	2609	11.4	19.2	6.50	237.3	6.5
50	H5050	13	2978	11.4	20.3	6.50	266.5	7.0
55	H5055	11	3527	11.4	20.6	6.50	295.8	7.5
60	H5060	10 [8]	3921	11.4	21.7	6.50	325.0	8.0
65	H5065	8 [6]	4430	11.4	22.7	6.50	354.3	8.5
70	H5070	7 [6]	5029	11.4	23.1	6.50	383.5	9.0
75	H5075	6 [6]	5501	11.4	24.1	6.50	412.8	9.5
80	H5080	6 [6]	5996	11.4	25.1	6.50	442.0	10.0
85	H5085	[6]	6817	11.4	25.5	6.50	471.3	10.5
90	H5090	[6]	7351	11.4	26.5	6.50	500.5	11.0
95	H5095	[6]	7909	11.4	27.5	6.50	529.8	11.5

▶ **MORE RELIABLE** “ Our guys are singing praises of this pole. All the insulators were stripped off the pole. I don’t believe any other pole we use in this application would have survived undamaged like this one. ”
 [After a large hickory tree fell on power lines, breaking wood poles on either side of a McWane pole.]

- Bart Borden - VP of Operations at Cleveland Utilities

▶ **THEY JUST WORK** “ They just work. They did exactly what they were designed to do - stop the domino effect. ” [After a winter storm took down 1,400 wood poles. No ductile iron or wood poles failed in the sections of line hardened with McWane Poles.]

- Reed Emerson, Cimarron Electric Cooperative’s Senior Vice President of Engineering and Operations

* Class poles are designed to wood pole equivalency, NESC Grade B construction.

Class H 6								
Feet	Part No.	Full Truck Qty. [2 Pcs.]	Stand. Weight (Lbs.)	Tip Dia. (In.)	Base Dia. (In.)	Allow. Tip Load (Kips)	Ground Line Capacity (Kip-Ft.)	Stand. Embed Depth (Ft.)
30	H6030	16	1616	14.0	19.5	7.41	166.7	5.5
35	H6035	16	1885	14.0	19.9	7.41	200.1	6.0
40	H6040	16	2419	14.0	20.9	7.41	237.1	6.0
45	H6045	14	2778	14.0	21.9	7.41	270.5	6.5
50	H6050	13	3097	14.0	22.3	7.41	303.8	7.0
55	H6055	10	3810	14.0	23.3	7.41	337.2	7.5
60	H6060	9 [6]	4254	14.0	24.3	7.41	370.5	8.0
65	H6065	7 [6]	4662	14.0	24.7	7.41	403.8	8.5
70	H6070	6 [6]	5426	14.0	25.7	7.41	437.2	9.0
75	H6075	6 [6]	5893	14.0	26.7	7.41	470.5	9.5
80	H6080	5 [6]	6700	14.0	27.1	7.41	503.9	10.0

Class H 7								
Feet	Part No.	Full Truck Qty. [2 Pcs.]	Stand. Weight (Lbs.)	Tip Dia. (In.)	Base Dia. (In.)	Allow. Tip Load (Kips)	Ground Line Capacity (Kip-Ft.)	Stand. Embed Depth (Ft.)
30	H7030	16	1616	14.0	19.5	8.39	188.7	5.5
35	H7035	16	1885	14.0	19.9	8.39	226.4	6.0
40	H7040	16	2484	14.0	20.9	8.39	268.3	6.0
45	H7045	14	2883	14.0	21.9	8.39	306.1	6.5
50	H7050	12	3236	14.0	22.3	8.39	343.8	7.0
55	H7055	10	3949	14.0	23.3	8.39	381.5	7.5
60	H7060	9 [6]	4394	14.0	24.3	8.39	419.3	8.0
65	H7065	7 [6]	4802	14.0	24.7	8.39	457.0	8.5
70	H7070	6 [6]	5687	14.0	25.7	8.39	494.7	9.0
75	H7075	5 [6]	6227	14.0	26.7	8.39	532.4	9.5
80	H7080	5 [6]	7148	14.0	27.1	8.39	570.2	10.0

Class H 8								
Feet	Part No.	Full Truck Qty. [2 Pcs.]	Stand. Weight (Lbs.)	Tip Dia. (In.)	Base Dia. (In.)	Allow. Tip Load (Kips)	Ground Line Capacity (Kip-Ft.)	Stand. Embed Depth (Ft.)
30	H8030	16	1711	14.0	19.5	9.43	212.1	5.5
35	H8035	16	2010	14.0	19.9	9.43	254.5	6.0
40	H8040	15	2655	14.0	20.9	9.43	301.6	6.0
45	H8045	13	3083	14.0	21.9	9.43	344.0	6.5
50	H8050	11	3464	14.0	22.3	9.43	386.4	7.0
55	H8055	9	4230	14.0	23.3	9.43	428.8	7.5
60	H8060	8 [6]	4708	14.0	24.3	9.43	471.3	8.0
65	H8065	7 [6]	5146	14.0	24.7	9.43	513.7	8.5
70	H8070	6 [6]	6181	14.0	25.7	9.43	556.1	9.0
75	H8075	5 [6]	6826	14.0	26.7	9.43	598.5	9.5
80	H8080	5 [6]	7956	14.0	27.1	9.43	640.9	10.0

Class H 9								
Feet	Part No.	Full Truck Qty. [2 Pcs.]	Stand. Weight (Lbs.)	Tip Dia. (In.)	Base Dia. (In.)	Allow. Tip Load (Kips)	Ground Line Capacity (Kip-Ft.)	Stand. Embed Depth (Ft.)
30	H9030	16	2004	16.5	22.1	10.53	236.9	5.5
35	H9035	16	2321	16.5	22.4	10.53	284.3	6.0
40	H9040	13	3046	16.5	23.5	10.53	337.0	6.0
45	H9045	11	3493	16.5	24.5	10.53	384.3	6.5
50	H9050	9	4281	16.5	24.9	10.53	431.7	7.0
55	H9055	9	4793	16.5	25.9	10.53	479.1	7.5
60	H9060	8 [6]	5335	16.5	26.9	10.53	526.5	8.0
65	H9065	6 [6]	6273	16.5	27.6	10.53	573.9	8.5
*	*	*	*	*	*	*	*	*
*	*	*	*	*	*	*	*	*
*	*	*	*	*	*	*	*	*

11.7 Kip								
Feet	Part No.	Full Truck Qty. [2 Pcs.]	Stand. Weight (Lbs.)	Tip Dia. (In.)	Base Dia. (In.)	Allow. Tip Load (Kips)	Ground Line Capacity (Kip-Ft.)	Stand. Embed Depth (Ft.)
30	11030	25	2011	16.5	22	11.7	263.3	5.5
35	11035	15	2447	16.5	22.3	11.7	315.9	6.0
40	11040	12	3041	16.5	23.4	11.7	374.4	6.0
45	11045	11	3535	16.5	24.4	11.7	427.1	6.5
50	11050	8	4381	16.5	24.7	11.7	479.7	7.0
55	11055	7	4931	16.5	25.7	11.7	532.4	7.5
60	11060	6	5505	16.5	26.7	11.7	585.0	8.0
65	11065	5	6456	16.5	26.9	11.7	637.7	8.5

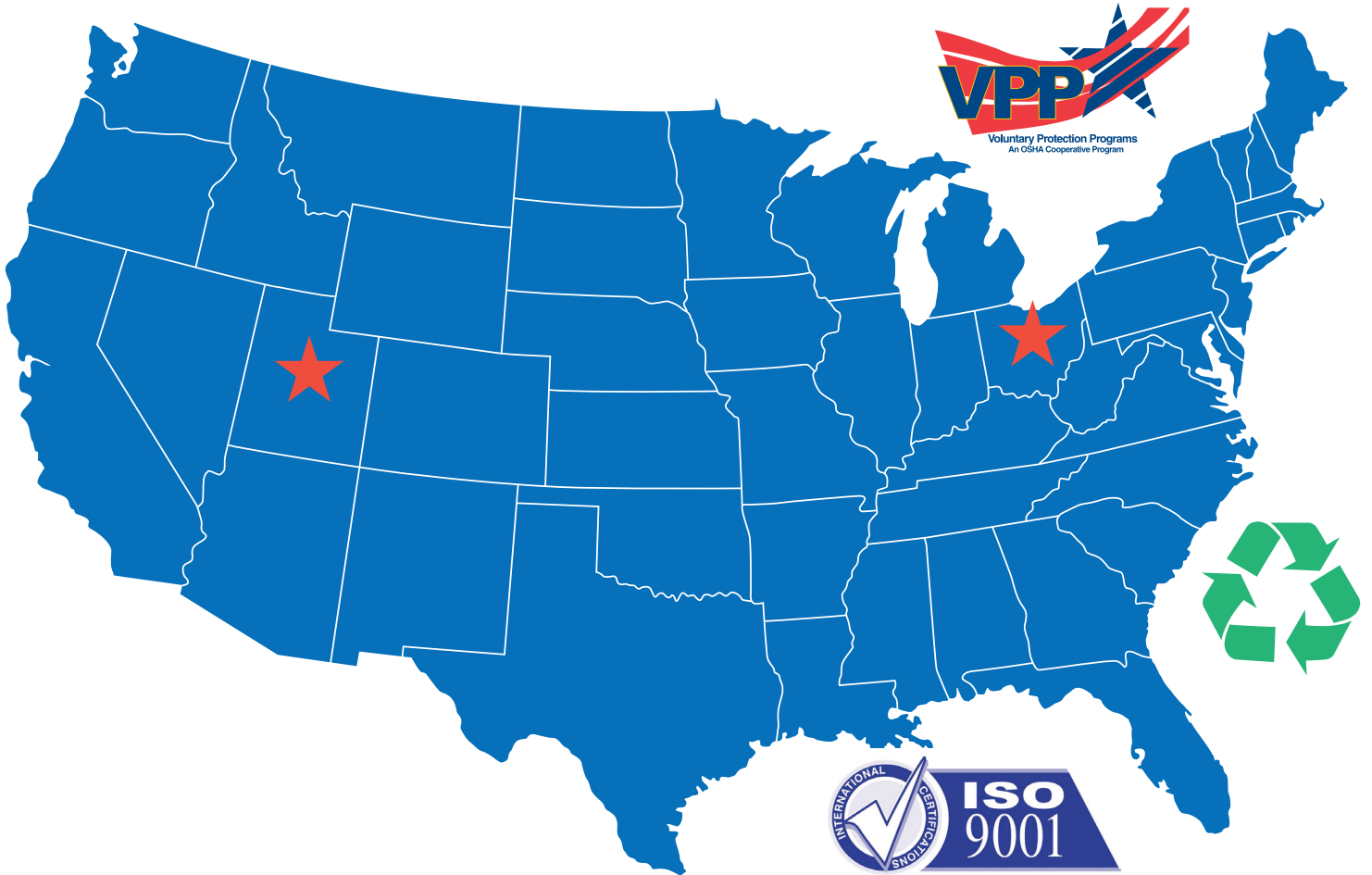
12.8 Kip								
Feet	Part No.	Full Truck Qty. [2 Pcs.]	Stand. Weight (Lbs.)	Tip Dia. (In.)	Base Dia. (In.)	Allow. Tip Load (Kips)	Ground Line Capacity (Kip-Ft.)	Stand. Embed Depth (Ft.)
30	12030	21	1927	16.5	22	12.8	288	5.5
35	12035	15	2590	16.5	22.3	12.8	345.6	6.0
40	12040	13	3251	16.5	23.4	12.8	409.6	6.0
45	12045	11	3493	16.5	24.4	12.8	467.2	6.5
50	12050	9	4547	16.5	24.7	12.8	524.8	7.0
55	12055	6	5191	16.5	25.7	12.8	582.4	7.5
60	12060	6	5811	16.5	26.7	12.8	640.0	8.0
65	12065	5	7016	16.5	26.9	12.8	697.6	8.5

16 Kip								
Feet	Part No.	Full Truck Qty. [2 Pcs.]	Stand. Weight (Lbs.)	Tip Dia. (In.)	Base Dia. (In.)	Allow. Tip Load (Kips)	Ground Line Capacity (Kip-Ft.)	ANSI Embed Depth (Ft.)
30	10630	16	2484	16.5	22	16	360.0	5.5
35	16035	14	2809	16.5	22.3	16	432.0	6.0
40	16040	12	3767	19	25.9	16	512.0	6.0
45	16045	10	4311	19	27	16	584.0	6.5
50	16050	8	5245	19	27.1	16	736.0	7.0

20 Kip								
Feet	Part No.	Full Truck Qty. [2 Pcs.]	Stand. Weight (Lbs.)	Tip Dia. (In.)	Base Dia. (In.)	Allow. Tip Load (Kips)	Ground Line Capacity (Kip-Ft.)	Stand. Embed Depth (Ft.)
30	20030	16	2671	19	24.6	20	450.0	5.5
35	20035	12	3049	19	24.9	20	540.0	6.0
40	20040	10	4203	19	25.9	20	640.0	6.0
45	20045	8	4856	19	27	20	730.0	6.5
50	20050	7	5983	19	27.1	20	820.0	7.0

MADE IN THE USA

★ IN PROVO, UTAH AND COSHOCTON, OHIO.



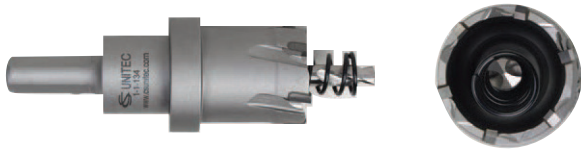
ACCESSORIES AND TOOLS

1 Drill Bits



Milwaukee Tool Part Nos.

- ▶ 3/8" Quick Change Arbor49-57-0035
- ▶ 11/16" Hole Saw Cutter49-57-8201
- ▶ 13/16" Hole Saw Cutter49-57-8205
- ▶ Pilot Bit (replacement)49-57-0038
(Other sizes available.)



- ▶ Unitec 13/16" Hole Saw Cutter 1-1-126
(Used for double-walled holes. Other sizes available.)

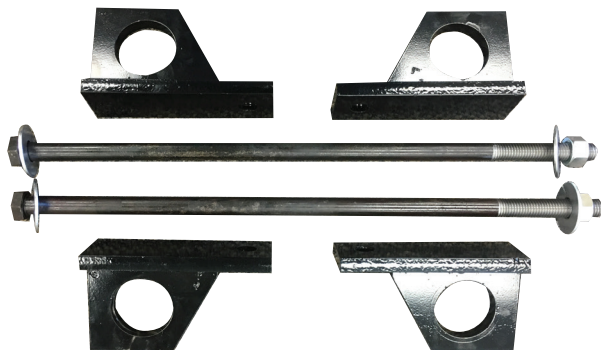


- ▶ 15/16" x 5" HSS Straight Shank Spiral Flute Reamer - Fastenal Part No. 3370520
(Used to increased hole size. Other sizes available.)



- ▶ Dormer E651 High-Speed Steel Combined Drill and Tap - Dormer Part No. E6511/2

4 Jacking Kit



2 Hole Plugs



- ▶ Hole Plugs PLP-0750B (Black)
PLP-0750G (Gray)

3 Pole Steps



- ▶ Pole Step with Fall Arrest Loop VAF 1002



- ▶ Pole Step - MacLean Senior Ind.....SI-0040S



- ▶ Jacking Kits Available for Purchase from McWane Poles

POLES TESTING INFORMATION



▶ McWane Poles experienced no damage or loss of strength when tested by the Western Fire Center Inc. to a proposed Standard for fire resistance of wood poles.

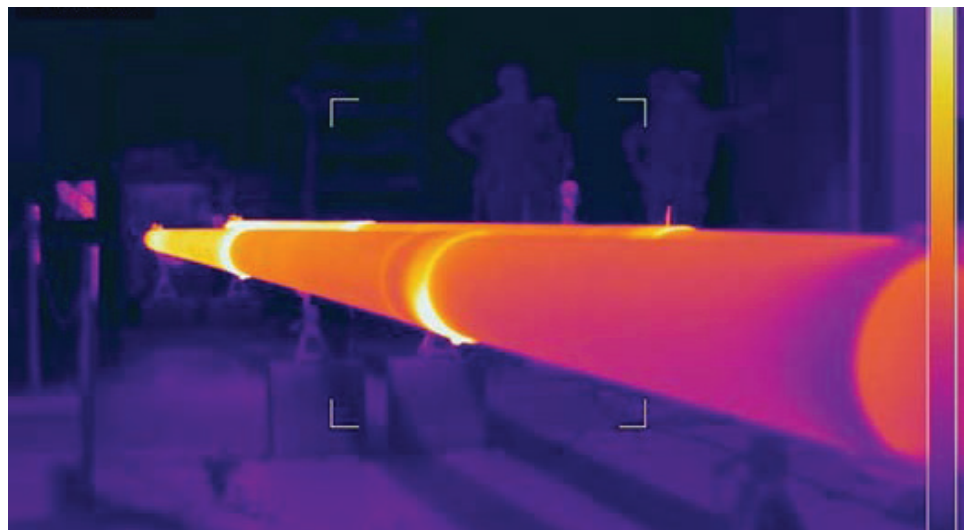


▶ **Properties of Ductile Iron**

Yield Strength	42,000 psi
Ultimate Strength	60,000 psi
Modulus of Elasticity	24,000 ksi
Minimum Elongation	10 %

▶ Ductile iron poles are designed to withstand 142% of class load before ultimate failure.

▶ AEP Dolan Lab's conductivity testing on a 45' pole resulted in approximately 2,000 micro-ohms impedance - equivalent to the resistance of a 4/0 copper ground.



Tip Load, Minimum Capacity, Kips Applied 2 Feet below Pole Tip

LENGTH	CLASS 3	CLASS 2	CLASS 1	H1	H2	H3	H4	H5	H6	H7	H8	H9
ALL	1.95	2.41	2.93	3.51	4.16	4.88	5.66	6.50	7.41	8.39	9.43	10.53

Bending Moment, Minimum Capacity, Kip-Feet at Ground Line

LENGTH	CLASS 3	CLASS 2	CLASS 1	H1	H2	H3	H4	H5	H6	H7	H8	H9
30	43.9	54.1	65.8	79.0	93.6	109.7	127.2	146.3	166.7	188.7	212.1	236.9
35	52.7	64.9	79.0	94.8	112.3	131.6	152.7	175.5	200.1	226.4	254.5	284.3
40	62.4	77.0	93.6	112.3	133.1	156.0	181.0	208.0	237.1	268.3	301.6	337.0
45	71.2	87.8	106.8	128.1	151.8	177.9	206.4	237.3	270.5	306.1	344.0	384.3
50	80.0	98.6	119.9	143.9	170.6	199.9	231.9	266.5	303.8	343.8	386.4	431.7
55	88.7	109.4	133.1	159.7	189.3	221.8	257.3	295.8	337.2	381.5	428.8	479.1
60	97.5	120.3	146.3	175.5	208.0	243.8	282.8	325.0	370.5	419.3	471.3	526.5
65	106.3	131.1	159.4	191.3	226.7	265.7	308.2	354.3	403.8	457.0	513.7	573.9
70	115.1	141.9	172.6	207.1	245.4	287.6	333.6	383.5	437.2	494.7	556.1	*
75	123.8	152.7	185.7	222.9	264.2	309.6	359.1	412.8	470.5	532.4	598.5	*
80	132.6	163.5	198.9	238.7	282.9	331.5	384.5	442.0	503.9	570.2	640.9	*
85	*	174.4	212.1	254.5	301.6	353.4	410.0	471.3	*	*	*	*
90	*	185.2	225.2	270.3	320.3	375.4	435.4	500.5	*	*	*	*
95	*	196.0	238.4	286.1	339.0	397.3	460.9	529.8	*	*	*	*
100	*	*	*	301.9	357.8	419.7	*	*	*	*	*	*

