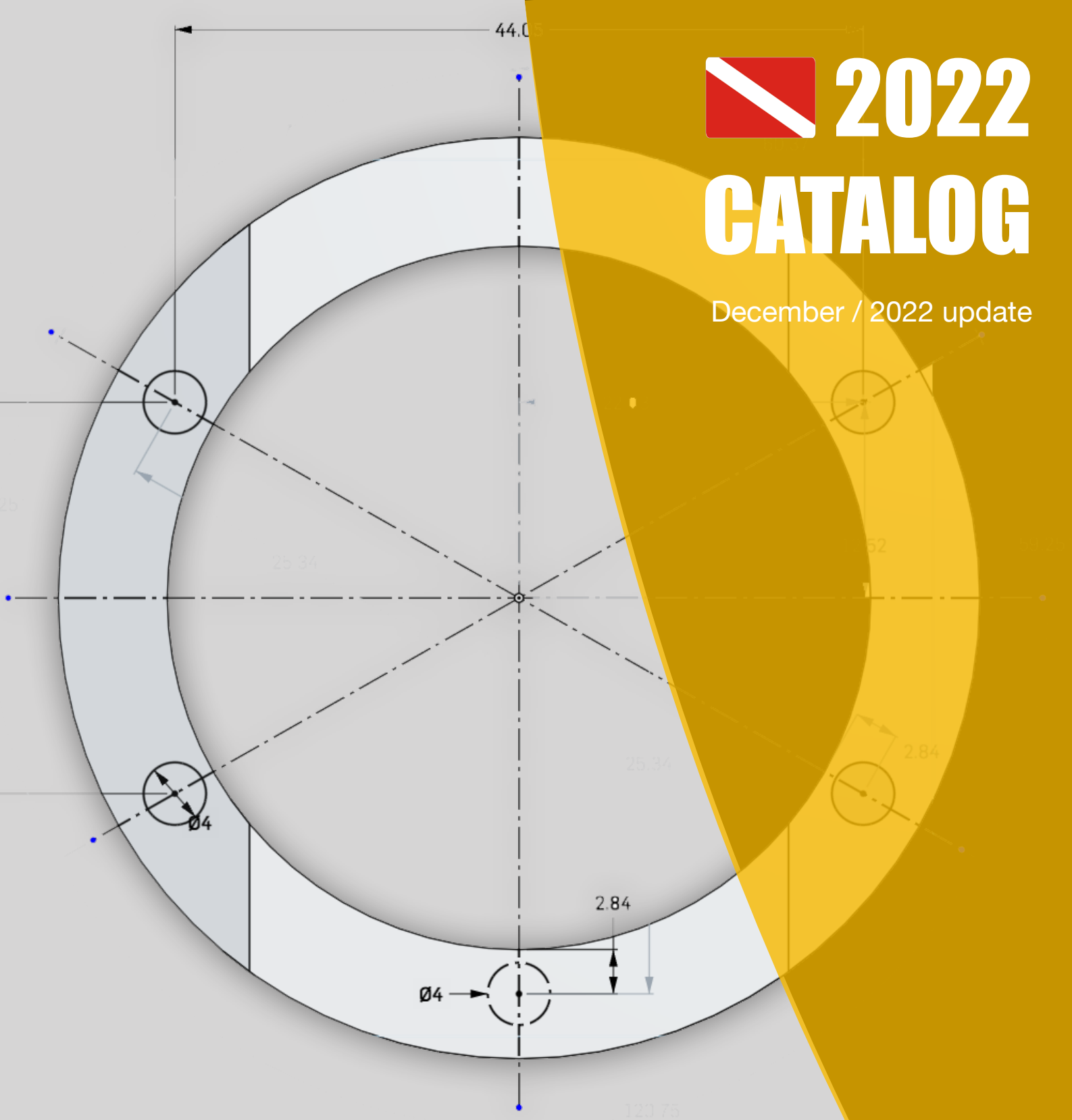


2022 CATALOG

December / 2022 update



SCUBA SERVICE
TOOLS



INTRODUCTION

Online store for specialised scuba equipment service tools. Producing hi quality regulator repair tools and testing equipment. Making sure the scuba technician can trust his tools and concentrate on the actual service of the equipment.

All specialised scuba service tools are manufactured and tested in house and do not leave our shop after undergoing severe testing during actual service.

We deliver our [specialised scuba tools](#) and [tool kits](#) world wide to a wide range of customers from dive shops to liveaboards to individual scuba repair technicians.

Visit our [online store](#) and pick your tools out of a wide range of products, ranging from specialised scuba tools to standard tools that should be present in every dive technicians shop. We also offer [scuba test equipment](#) from a basic to a professional level, these panels are used at a daily basis in dive shops all round the world.

At Scuba Service Tools, we produce the highest quality [specialised scuba tools](#) so your service time gets more efficient and less frustrating.

We are always more than happy to provide technical advice and accommodate for special service needs or requests. For more details please visit our website scubaservicetools.com or send us an email at info@divingondemand.com

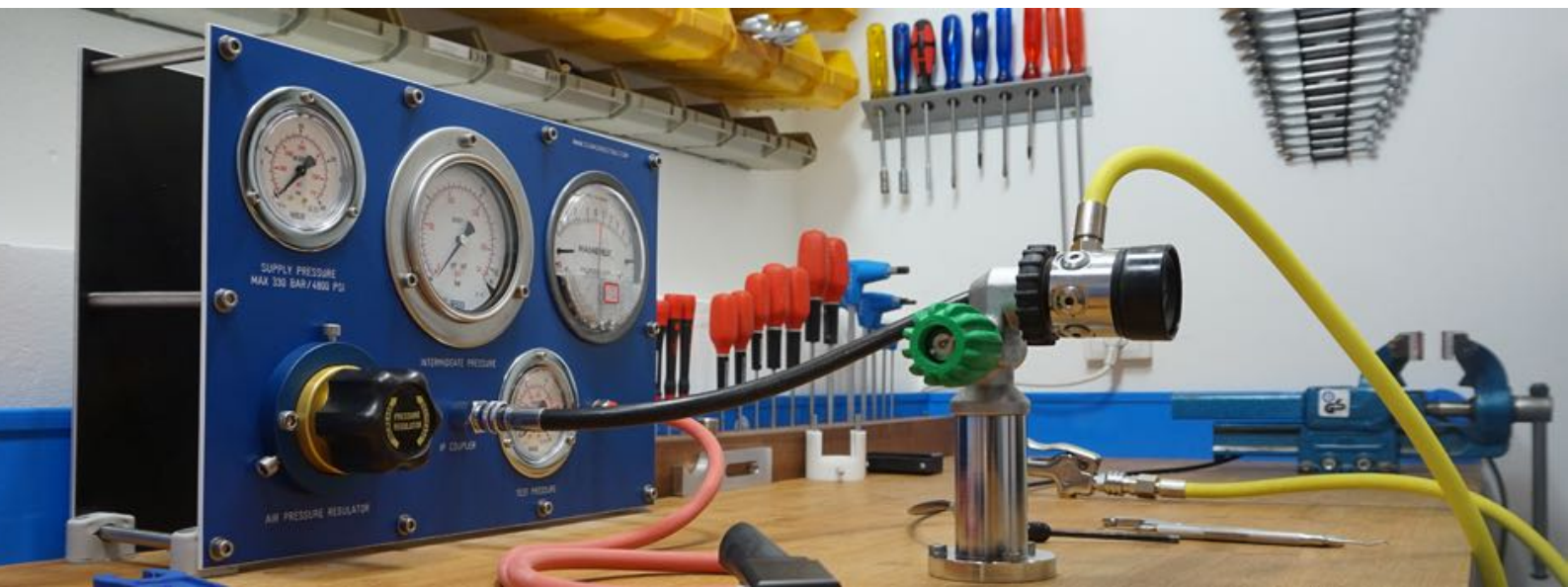
We can also be reached by phone [+31651997943](tel:+31651997943) during normal business hours (CET 09:00 till 17:00) or by using our [contact form](#).

Looking for a tool that is not in our webshop, no problem just send us a detailed drawing of your tool together with an explanation on how you would like to use the tool. If after our consideration your design finally ends up in our webshop you will be send a free sample of this tool.

CONTENT

Page 3.	Aqualung tools
Page 7.	Mares tools
Page 11.	Poseidon tools
Page 13.	Scubapro / Tusa tools
Page 22.	Oceanic tools
Page 22.	Seac tools
Page 23.	Sherwood tools
Page 25.	Suunto tools
Page 26.	Apeks tools
Page 30.	Cressi tools

Page 31.	Universal tools
Page 37.	Tool kits
Page 41.	General workshop tools
Page 48.	Filling panels
Page 51.	Instruments
Page 56.	Shipping conditions





GUIDE BUSHING TOOL FOR CONSHelf SERIES

Installing all the small parts on top of the spring in the first stage body of the Aqualung Conshelf series is not an easy thing to do but this tool will help the parts slide into place and therefore giving the technician room to put the cir-clip in its place.

€ 8,00 | Material: Acetal | SKU: 1000-SST-006



AQUALUNG 2ND STAGE DIAPHRAGM RETAINER TOOL

Properly installing and removing the threaded diaphragm retainer ring becomes a piece of cake for the technician when using this tool. It fits the diaphragm retainer ring of several Aqualung 2nd stages including the Titan LX (2009 later models), Core and Legend.

€ 13,00 | Material: Acetal | SKU: 1000-SST-001



AQUALUNG 2ND STAGE DIAPHRAGM RETAINER TOOL (old model)

Properly installing and removing the threaded Aqualung diaphragm retainer ring of older Aqualung second stage models.

It fits the diaphragm retainer ring of several (older model) Aqualung 2nd stages.

€ 13,00 | Material: Acetal | SKU: 1000-SST-011



AQUALUNG 2ND STAGE SETTING TOOL

The central section, flat on one side and recessed on the other side allows the technician to set the optimal lever height for the Aqualung Calypso and Core.

The slotted ends allow the technician to accurately install and position the orifice for both the Calypso Quick Disconnect.

€ 8,00 | Material: Acetal | SKU: 1000-SST-049



AQUALUNG TITAN DRY CHAMBER CAP TOOL

This tool opens en closes the dry chamber ring on top of the following Aqualung/US Divers models: Titan, Conshelf, Cousteau, Sea, Supra.

It is not recommended to exceed the torque value of 20 Nm.

€ 14,00 | Material: Aluminium / Stainless steel | SKU: 3000-SST-006



AQUALUNG T-HANDLE SOCKET

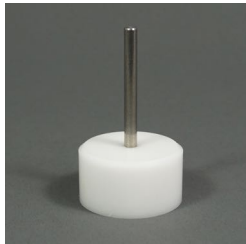
To open and close the diaphragm retainer / environmental cap of Aqualung T-Handle socket for Titan LX, Kronos and Core Supreme first stages this tool can be used. it does the job without scratching the surface of the first stage.

The tool is made from Acetal (so the first stage does not get scratched) with hardened steel pins and a stainless steel handle.

€ 18,00

| Material: Acetal / Stainless steel

| SKU: 1200-SST-008



AQUALUNG HP VALVE SEAT INSTALLATION AND REMOVAL TOOL

Remove and instal the HP seat from the housing of the Titan LX supreme first stage body.

Put the tool on the workbench and gently push down the first stage body till it stops at the acetal bace, now the high pressure seat is lose in the first stage body.

€ 14,00

| Material: Acetal / Stainless steel

| SKU: 1200-SST-060



AQUALUNG POWERLINE INFLATOR BEZEL TOOL

Used to install and remove the bezel of the Aqualung powerline inflator.

Place the tool with the hardened steel pins over the bezel of the inflator and turn counter clockwise to open the inflator button bezel.

When closing do not use too much force otherwise the threats of the bezel ring will be damaged.

€ 12,00

| Material: Acetal / Stainless steel

| SKU: 1200-SST-009



AQUALUNG / APEKS O-RING ASSIST TOOL FOR BAL. 2ND STAGE BARREL

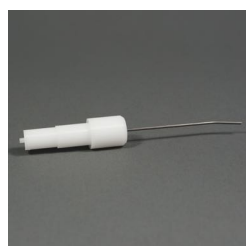
Stretching an O-ring to much can cause damage. this tool will assist the technician when placing the O-ring over the thick edge of the balanced 2nd stage barel.

Place the tool over the thick end of the 2nd stage barrel and slide the O-ring in place .

€ 7,00

| Material: Acetal

| SKU: 1000-SST-014



AQUALUNG LEGEND HP SEAT INSTALLATION AND REMOVAL TOOL

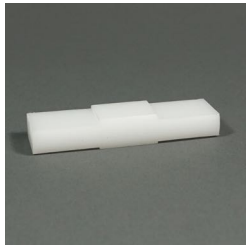
Installing and removing of the HP seat of the Aqualung Legend first stage.

To remove the high pressure seat put the stainless steel end of the tool inside one of the middle pressure ports and push out the seat. The other acetal side of the tool is used to press the serviced seat back in place without damaging the service of the high pressure seat.

€ 13,00

| Material: Acetal / Stainless steel

| SKU: 1200-SST-007

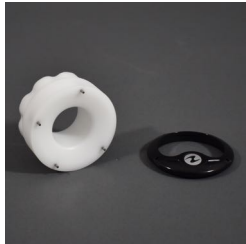


AQUALUNG LEVER HEIGHT SETTING TOOL FOR BALANCED SECOND STAGE

This tool can be used to adjust the lever height of several Aqualung second stage. Used on the following models:

- Legend
- Titan LX
- Mikron

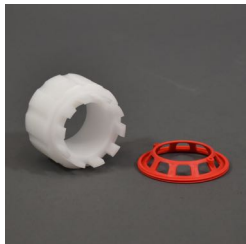
€ 7,00 | Material: Acetal | SKU: 1000-SST-021



AQUALUNG MIKRON COVER TOOL

This cover tool opens the cover of the Aqualung Mikron second stage.

€ 19,00 | Material: Acetal | SKU: 1000-SST-030



AQUALUNG MIKRON DIAPHRAGM RETAINER TOOL

Properly installing and removing the threaded Aqualung diaphragm retainer ring of the Aqualung Mikron second stage models.

€ 15,00 | Material: Acetal | SKU: 1000-SST-029



AQUALUNG 26MM YOKE NUT SOCKET

This socket with extra-thin walls fits on all Aqualung yoke (INT) first stage regulators and the Apeks flight yoke (INT) first stage regulator.

Located at the top of the socket is an 8mm hex connection which is easily accessible with an 8mm long hex key.

€ 19,99 | Material: Stainless steel | SKU: 2000-SST-013



AQUALUNG ABS OCTOPUS COVER TOOL

This cover tool opens the cover of the Aqualung ABS octopus second stage.

Place the tool with the pins down on the cover of the ABS octopus second stage and locate the pins of the tool inside the small holes of the second stage cover.

€ 16,00 | Material: Acetal | SKU: 1000-SST-038



AQUALUNG LEGEND I SERIES AND TITAN LX COVER TOOL

This cover tool opens the cover of the Aqualung Legend I series and Titan LX second stage.

Place the tool with the pins down on the cover and locate the pins of the tool inside the small holes of the second stage cover.

€ 16,00

| Material: Acetal

| SKU: 1200-SST-015



AQUALUNG CORE COVER TOOL

this cover tool opens the cover of the Aqualung Core second stage.

Place the tool with the pins down on the cover of the Aqualung Core second stage and locate the pins of the tool inside the small holes of the second stage cover.

€ 14,00

| Material: Acetal

| SKU: 1000-SST-064



MARES SECOND STAGE CASE RECOVERY TOOL

Used to save the plastic housings of several Mares 2nd stage regulator bodies when the valve body and the valve housing are badly corroded. By inserting it in the slit opening of the valve the technician can use a 14mm or a 9/16" key to open the assembly without damaging the regulator case.

€ 10,00

Material: Stainless steel

SKU: 2000-SST-005



MARES DEMAND LEVER VALVE AND POPPET ASSEMBLY TOOL

Putting in the small steel rod and the HP seat in its place is a special jog but by using this tool it slides into place the right way. Also the tool can be used to instal the demand lever of the second stage.

€ 15,00

Material: Acetal

SKU: 1000-SST-054



MARES INFLATOR DEFLATION BUTTON TOOL

Removing and inserting of the small plastic ring together with its O-ring located in the bottom part of the inflator can be done without any problems by using this tool.

€ 10,00

Material: Acetal

SKU: 1000-SST-050



MARES HP VALVE SEAT INSTALLATION AND REMOVAL TOOL

Remove and instal the HP seat from the Mares first stage body.

When removing put the seat use compressed air by pumping it in and decrease the pressure on the tool so that the seat can come loose from the housing of the first stage body.

€ 11,00

Material: Acetal

SKU: 1000-SST-058



MARES GUIDE BUSHING FOR MR12 SERIES

Installing all the small parts on top of the spring in the first stage body of the Mares MR12 is not an easy thing to do but this tool will help the parts slide into place. After this the rod can be used to slide the cir-clip in its place.

€ 13,00

Material: Acetal

SKU: 1000-SST-047



MARES 2ND STAGE VALVE ASSEMBLY TOOL

Installing poppet assemblies is something of an acrobatic stunt but when using this tool it makes your job an easy one.

Place the tool in the poppet opening and put pressure on it this way the spring inside is pressed in and the nylon nut can be screwed on.

€ 9,00 | Material: Acetal | SKU: 1000-SST-052



MARES HP SEAT REMOVAL TOOL

Removing of HP seats of diaphragm first stages such as the MR22 and MR12.

Stick the stainless steel part inside an open low pressure opening and push it slowly against the high pressure seat till it pops out.

€ 7,00 | Material: Acetal / Stainless steel | SKU: 1200-SST-050

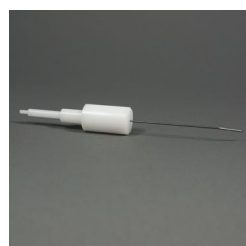


MARES HP SEAT INSTALLATION TOOL

Installation of the HP seat. in several mares first stages.

Place the high pressure seat on top of the tool and gently push it in place in the first stage body

€ 10,00 | Material: Acetal | SKU: 1000-SST-057



MARES COMBINED HP SEAT REMOVAL AND INSTALLATION TOOL TOOL

Two tools for the price of one. With this tool you can remove or assemble the HP seat in Mares diaphragm first stage body's (MR22 and MR12) because of the soft material you will not scratch or damage the metal parts of the first stage.

With the other end of the tool you can easily remove the HP seat.

€ 14,00 | Material: Acetal / Stainless steel | SKU: 1200-SST-049



MARES 1/2" HOSE CONNECTOR FOR UNIVERSAL HOSE PROTECTOR TOOL

Add-on that can be used for Mares 1/2inch hoses together with the universal hose protector tool.

To use this add-on remove the low pressure connector from the hose protector tool and screw this one on, now you can put hose protectors on the 1/2 inch Mares hoses.

€ 10,00 | Material: Brass | SKU: 1240-SST-002



MARES FUSION COVER TOOL

This tool is used to open the cover of the Fusion second stage by sliding it over and locking the four tips into the reseses of the second stage cover.

€ 29,00

Material: Acetal

SKU: 1000-SST-040



MARES 25MM YOKE NUT SOCKET

This socket with extra-thin walls fits on all Mares yoke (INT) first stage regulators. Located at the top of the socket is an 8mm hex connection which is easily accessible with an 8mm long hex key.

€ 19,99

Material: Stainless steel

SKU: 2000-SST-015



MARES AIR CONTROL PLUG

This tool is used to open and close the Mares AIR control inflator plug and exhaust valve cap

€ 12,00

Material: Acetal / Stainless steel

SKU: 1200-SST-017



MARES DIN REGULATOR AST TOOL

This tool opens and closes the Mares AST anti-infiltration technology for DIN first-stage connections.

The tool has a stainless steel handle for opening and closing by hand.

€ 15,00

Material: Stainless steel

SKU: 2000-SST-011



MARES INT OR YOKE REGULATOR AST TOOL

This tool opens and closes the Mares AST anti-infiltration technology for INT (yoke) first-stage connections.

The tool has a stainless steel handle for opening and closing by hand.

€ 15,00

Material: Stainless steel

SKU: 2000-SST-010



MARES ROVER COVER TOOL

Opening and closing the mares Rover second stage cover can be done with ease using the cover tool for Mares Rover second stage.

Place the three recesses in the openings of the Mares second stage cover, then open or close the cover using the ribbed handle.

€ 17,00

| Material: Acetal

| SKU: 1000-SST-055



POSEIDON JETSTREAM FIRST STAGE TOOL SET

This tool is used to correctly assemble the internal parts of your Poseidon Jetstream first stage (model; 3720 and 3790).

The part is used as a fixture for the following parts:
Valve center with O-rings, Valve seat with O-ring, Valve piston and the Spring.

€ 21,00

Material: Acetal / Stainless steel

SKU: 1000-SST-004



POSEIDON JETSTREAM AND XSTREAM VALVE HOUSING TOOL

Disassembly and assembling off the valve housing of the Poseidon Jetstream and Xstream second stages.

Place the valve housing on the aluminium base of the tool set after wich the t-handle part can be used to unscrew the top part of the valve housing.

€ 29,00

Material: Aluminium / Stainless steel

SKU: 3000-SST-009



POSEIDON JETSTREAM / XSTREAM VALVE HOUSING O-RING INST. TOOL

Installation of the O-ring back into the valve housing of the Poseidon Jetstream and Xstream second stages.

This tool is best to combine with the Poseidon jetstream Stream valve housing tool.

€ 17,00

Material: Acetal

SKU: 1000-SST-002



POSEIDON VALVE SEAT TOOL FOR CYKLON FIRST STAGE

Removal and installation of the teflon valve seat of the Poseidon Cyklon first stage.

Use the brass end to remove the high pressure seat from the Cyklon first stage body and the acetal part to gently put it back in place after service.

€ 18,00

Material: Acetal / Brass

SKU: 1210-SST-001



POSEIDON CYKLON 300 LOCKING NUT SCREW TOOL

Opening and closing off the small locking nut screw on top of the filter of the Poseidon Cyklon 300.

Use the small slotted end of the tool to unscrew the locking nut on top of the filter of the poseidon Cyklon 300, after service do not screw it in to tight to prevent the screw from being opened due to use and corrosion build-up.

€ 14,00

Material: Acetal / Stainless steel

SKU: 1200-SST-005



POSEIDON FIRST STAGE SOCKET

Use this tool for the installation and removal of the top covers from the Jetstream and the Cyklon first stages. Slide the tool over the cover of the first stage and open or close it with a 3/8 inch torque or normal wrench. When closing the cover do not over tight it, (Torque should not exceed 30Nm).

€ 39,00

| Material: Aluminium

| SKU: 3000-SST-002



POSEIDON DRIFT TOOL FOR CYKLON SECOND STAGE

This tool makes the assembly of the valve housing of the Poseidon Cyklon second stages much easier.

€ 9,00

| Material: Acetal

| SKU: 1000-SST-024



SCUBAPRO BALANCE CHAMBER TOOL

The top of the balance chamber screw is most of the time too deep to be able to open it with a normal wrench therefore we have made this tool, it is used to open and close the Scubapro Mk16, MK18 and the Tusa R400 first stage Balance chamber and can be used as a hand tool or with a 14mm / 9/16" wrench

€ 15,00

Material: Stainless steel

SKU: 2000-SST-002



SCUBAPRO AIR-2 / TUSA DUO-AIR TOOL SET

Multi toolset for the service of the Scubapro AIR-2 and Tusa Duo-AIR regulators.

€ 55,00

Material: Aluminium / Acetal / Brass

SKU: 3000-SST-013



SCUBAPRO / TUSA FLOW VANE REMOVAL TOOL

Ever tried putting your fingers in the mouthpiece opening of a 2nd stage regulator, with this tool removing the flow vane becomes easy. It is suitable for several Scubapro and Tusa 2nd stages.

€ 9,00

Material: Stainless steel

SKU: 2000-SST-007



SCUBAPRO / TUSA COMBINED HP SEAT TOOL

This tool is used to remove and install the HP seat of the Scubapro MK16, MK17, MK11 and Tusa RS460 and RS790 first stage.

€ 9,00

Material: Acetal / Stainless steel

SKU: 1200-SST-002



SCUBAPRO / TUSA COVER TOOL

When removing the cover of several Scubapro second stages including the R095 R380, R390, S550, G500 / Tusa S60 this tool is the perfect solution.

Place the tool on top of the cover of the second stage so that the teeth of the tool fit into the small slits inside the cover of the second stage.

€ 14,00

Material: Acetal

SKU: 1000-SST-059

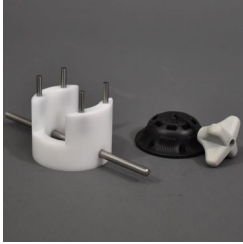


SCUBAPRO / TUSA DRIFT TOOL FOR DIAPHRAGM FIRST STAGES

To make the removal and installation of the high pressure seats as well as the small backup O-ring and washer in the body's of the Scubapro MK11, MK16, MK17, MK18 / Tusa R400 a piece of cake.

When removing the high pressure seat use the air gun from the top side of the first stage and the tool from the bottom side to remove the HP seat.

€ 9,00 | Material: Acetal | SKU: 1000-SST-027



SCUBAPRO BCD TOOL

This BCD tool is used to open and close all valves attached to Scubapro bcd's. Because of the big square opening in the middle it can also be used to open the valve connected to the inflator assembly on top of the jacket.

€ 20,00 | Material: Stainless steel / Acetal | SKU: 1200-SST-035



SCUBAPRO MK5 INTERNAL O-RING TOOL SET

Ever tried to put a new O-ring into the main body of a Scubapro MK5 first stage? With this tools the job is done in a matter of seconds.

€ 13,00 | Material: Acetal | SKU: 1000-SST-007



SCUBAPRO MK10 INTERNAL O-RING TOOL SET

Ever tried to put a new O-ring into the main body of a Scubapro MK10 first stage? With this tools the job is done in a matter of seconds.

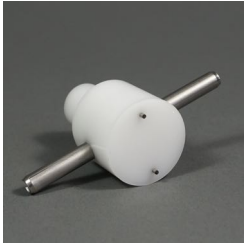
€ 13,00 | Material: Acetal | SKU: 1000-SST-026



SCUBAPRO SECOND STAGE PLUG TOOL

Scubapro housing plugs always need a 1/4 of a turn to put them into place or take them out of the housing during service, the use of this tool will make this job a piece of cake.

€ 7,00 | Material: Stainless steel / Acetal | SKU: 1200-SST-033



SCUBAPRO D300, D350 AND D400 2 IN 1 TOOL

This tool will open the big black and small silver nut located on the outside of the second stage regulator body of the Scubapro D300, D350 and D400. The tool has two sides with hardened steel pins and is made from acetal with a stainless steel handle.

€ 15,00

Material: Stainless steel / Acetal

SKU: 1200-SST-059



SCUBAPRO SEAT RETAINER SOCKET

For the easy removal and installation of the seat retainer found on the Scubapro models MK5, MK6, MK7, MK10 and MK20 first stage. The tool has hardened steel pins and a stainless steel handle

€ 14,00

Material: Stainless steel / Acetal

SKU: 1200-SST-001



SCUBAPRO / TUSA DIN RETAINING KNOB O-RING INSTALLATION BULLET

DIN retaining knobs have big and sharp threats and putting an O-ring over these threats most of the time damages the O-ring.

By using this small bullet the job is done quick and the O-ring is still in perfect condition. Place the bullet over the threats of the DIN retainer knob and slide the O-ring on it's place.

€ 5,00

Material: Acetal

SKU: 1000-SST-028



SCUBAPRO R290 COVER TOOL

Lots of time the cover of the 2nd stage is screwed on too tight or the technician is unable to remove it because of dirty threads.

This tool will assist in Removing the cover of the Scubapro R290 2nd stages.

€ 16,00

Material: Acetal

SKU: 3000-SST-030



SCUBAPRO MK20, MK21, MK25 BUSHING TOOL

Some of the Scubapro first stages use a bushing arrangement to help with the movement of the piston during diving. Installing these bushing rings and the small O-ring in-between them is made easy when you use this bushing tool.

€ 12,00

Material: Acetal

SKU: 1000-SST-034



SCUBAPRO COVER TOOL FOR R190, G250, G200, M5

This tool will assist in Removing the cover of the Scubapro R190, G250, G200 and the M5 2nd stages.

Lots of time the cover of the 2nd stage is screwed on to tight or the technician is unable to remove it because of dirty threads.

€ 10,00

Material: Aluminium / Acetal / Stainless steel

SKU: 1300-SST-032



SCUBAPRO 2ND STAGE CASE RECOVERY TOOL

This tool can be used to save the plastic housings of the Scubapro R-series 2nd stage regulators when the valve body and the valve housing are badly corroded. By sticking the tool thru the right side plug opening and inserting it in the slit opening of the valve housing the technician can use a 14mm or a 9/16" key on the valve body to open the assembly without damaging the regulator case.

€ 10,00

Material: Stainless steel

SKU: 2000-SST-008



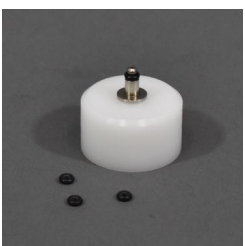
SCUBAPRO MK25 PISTON BULLET

Fits on the Scubapro MK5, MK10, MK25 first stages for technicians that still wish to apply the previously recommended insertion method of the piston. This piston bullet will fit most of the balanced flow through pistons of Scubapro with the exception of some very old models.

€ 7,00

Material: Brass

SKU: 4000-SST-002



SCUBAPRO HP SWIVEL O-RING INSTALLATION ASSIST TOOL

With this scuba tool putting the tiny O-rings on the high pressure swivel is done in a matter of seconds without shooting the O-rings in all directions or loosing the small metal swivel.

Place the tool on your desk, put in an empty high pressure swivel now place the o-ring on top of the swivel en push it sideways on the swivel top with your finger.

€ 4,00

Material: Acetal

SKU: 1000-SST-048



SCUBAPRO HIGH PRESSURE SEAT TOOL FOR MK2 EVO

Removing and installing the high pressure seat from the body of the Scubapro MK2 Evo.

€ 12,00

Material: Acetal/Stainless steel

SKU: 1200-SST-013



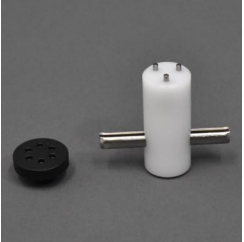
SCUBAPRO AIR2 COVER RING TOOL

This tool is used to open and close the Scubapro AIR2 cover ring and can be used for generations 4th and 5th.

€ 15,00

Material: Acetal / Stainless steel

SKU: 3000-SST-021



SCUBAPRO AIR2 (5TH GEN) INFLATOR PLUG TOOL

This tool is used to open and close the Scubapro AIR2 5th generation inflator plug.

€ 9,50

Material: Acetal

SKU: 3000-SST-027



SCUBAPRO AIR2 (5TH GEN) EXHAUST SPIDER TOOL

This tool is used to open and close the Scubapro AIR2 5th generation exhaust spider together with the on-way valve.

€ 14,50

Material: Acetal

SKU: 3000-SST-025



SCUBAPRO AIR2 (5TH GEN) INFLATOR STEM O-RING INSTALLATION TOOL

This tool is used to slide the o-rings from the Scubapro AIR2 5th generation inflator stem easily in place without damaging them.

€ 5,00

Material: Acetal

SKU: 3000-SST-029



SCUBAPRO AIR2 (5TH GEN) INFLATOR STEM TOOL

This tool is used to hold the round recessed part under the Scubapro AIR2 5th generation inflator button.

Hold the recessed part with the tool and at the same time loosen or fasten the screw on the other end.

€ 12,00

Material: Acetal

SKU: 3000-SST-028



SCUBAPRO AIR2 INLET TUBE O-RING INSTALLATION TOOL

This tool is used to slide the thick o-rings from the Scubapro AIR2 easily in place without damaging them.

The tool fits all AIR2 generations.

€ 7,00 | Material: Acetal | SKU: 3000-SST-020



SCUBAPRO AIR2 POPPET ASSEMBLY ASSIST TOOL

This tool is used to tension the spring in the Scubapro AIR2 poppet assembly so it is easier to install the lever, washer, and nut on top of the poppet assembly.

This tool can be used on all AIR2 generations.

€ 11,00 | Material: Acetal | SKU: 3000-SST-026



SCUBAPRO R295 AND R395 COVER TOOL

This tool is very useful for opening the Scubapro R295 and R395 second stage cover. By inserting the formed part on the top of the tool into the purge button, the cover of the second stage can be easily opened after removing the locking pin.

€ 19,00 | Material: Acetal | SKU: 1000-SST-017



SCUBAPRO C370 COVER TOOL

This tool is very useful for opening the Scubapro C370 second stage cover. By placing the tool over the second stage cover the recesses will grab the sides of the cover ring. The second stage can now be easily opened after removing the locking pin.

€ 21,00 | Material: Acetal | SKU: 1000-SST-036



SCUBAPRO S560 COVER TOOL

This tool is used to open the Scubapro S560 second stage cover. By placing the tool over the second stage cover the 3 recesses will lock into the cover ring. The second stage can now be easily opened after removing the locking pin.

€ 16,00 | Material: Acetal | SKU: 1000-SST-035



SCUBAPRO G260 COVER TOOL

this tool will assist in opening the second stage cover of the Scubapro G260. The many recesses grip into the second stage cover ring and ensure a smooth opening of the entire cover.

€ 16,00

Material: Acetal

SKU: 1000-SST-033



SCUBAPRO S600 AND S600Ti COVER TOOL

This tool will assist in opening the second stage cover of the Scubapro S600 (3rd and 4th generation) as well as the S600 Ti and Black tech.

€ 16,00

Material: Acetal

SKU: 1000-SST-032



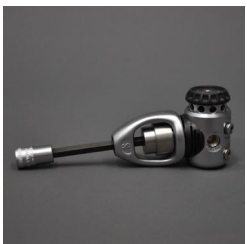
SCUBAPRO S600 (OLD MODEL) COVER TOOL

This tool will assist in opening the second stage cover of the Scubapro S600 old model (1st and 2nd generation).

€ 19,00

Material: Acetal

SKU: 1000-SST-018



SCUBAPRO 25MM YOKE NUT SOCKET

This socket with extra-thin walls fits on all Scubapro yoke (INT) first stage regulators.

Located at the top of the socket is an 8mm hex connection which is easily accessible with an 8mm long hex key.

€ 19,99

Material: Stainless steel

SKU: 2000-SST-014



SCUBAPRO HYDROS BCD COLOUR-KIT TOOL

This tool is used to attach the frangible grommet and nut (Scubapro part number: 21.782.005) of the Scubapro Hydros color kits.

€ 13,00

Material: Acetal and Stainless steel

SKU: 1200-SST-016



SCUBAPRO AIR2 INFLATOR PLUG TOOL FOR 2ND, 3RD AND 4RD GENERATION

This tool is used to open and close the Scubapro AIR2 (2nd, 3rd, and, 4th generation) inflator plug.

€ 7,00 | Material: Acetal / Stainless steel | SKU: 1000-SST-051



SCUBAPRO AIR2 INFLATOR STEM O-RING INSTALLATION TOOL

This tool is used to slide the o-rings from the Scubapro AIR2 (2nd, 3rd, and, 4th generation) inflator stem easily in place without damaging them.

€ 6,00 | Material: Acetal | SKU: 1000-SST-045



SCUBAPRO AIR2 EXHAUST SPIDER TOOL FOR 3RD AND 4TH GENERATION

This tool is used to open and close the Scubapro AIR2 (3rd and 4th generation) exhaust spider together with the one-way valve.

€ 9,00 | Material: Acetal / Stainless steel | SKU: 1000-SST-053



SCUBAPRO R195 COVER TOOL

this tool will assist in opening the second stage cover of the Scubapro R195. The many recesses grip into the second stage cover ring and ensure a smooth opening of the entire cover.

Scubapro: 43.300.020

€ 16,00 | Material: Acetal | SKU: 1000-SST-063



SCUBAPRO AIR2 EXHAUST SPIDER TOOL FOR 3RD AND 4TH GENERATION

This socket is used to open and close the 28mm diaphragm retainer ring on the Scubapro MK17 Evo and the MK19 Evo first stage.

It can be used in combination with an 8mm long hex key with a connection to 3/8".

€ 22,00 | Material: Stainless steel | SKU: 2000-SST-012

**SCUBAPRO 095 NEW MODEL COVER TOOL**

This tool will assist in opening the second stage cover of the Scubapro R095 (new model).

The two recesses grip into the second stage cover ring and ensure a smooth opening of the entire cover.

€ 16,00

| Material: Acetal

| SKU: 1000-SST-044

**SCUBAPRO C200 AND C300 COVER TOOL**

This tool will assist in opening the second stage cover of the Scubapro C200 and C300.

The three recesses grip into the second stage cover ring and ensure a smooth opening of the entire cover.

€ 15,00

| Material: Acetal

| SKU: 1000-SST-057

**SCUBAPRO D420 FLOW VANE RING TOOL**

Installing the flow vane ring from the Scubapro D420 second-stage regulator is a piece of cake using this tool.

€ 15,00

| Material: Acetal / Stainless steel

| SKU: 1200-SST-019

**SCUBAPRO D420 FLOW VANE PLUG TOOL**

Installing the flow vane plug from the Scubapro D420 second-stage regulator is a piece of cake using this tool.

€ 14,00

| Material: Acetal / Stainless steel

| SKU: 1200-SST-020



OCEANIC HIGH PRESSURE SEAT EXTRACTION AND INSTALLATION TOOL

This tool will assist the technician with removing and installing the high pressure seat of Oceanic first stages.

€ 11,00

Material: Acetal / Stainless steel

SKU: 1200-SST-006



OCEANIC QUICK RELEASE TOOL

Used to disassemble and assemble the Oceanic quick release coupler (Different size than the Suunto quick release coupler).

€ 25,00

Material: Stainless steel

SKU: 2000-SST-004



OCEANIC FDXi 1ST STAGE DIAPHRAGM RETAINER END CAP TOOL

Designed to aid the service technician in the disassembly and assembly of the Oceanic FDXi first stage diaphragm retainer end cap (part number (8373).

Tool can be used in combination with a 19mm wrench to apply more force if needed to open the diaphragm retainer end cap.

€ 19,00

Material: Acetal

SKU: 1200-SST-012



SEAC SORIOUS SPRING RETAINER RING TOOL

Removal of the teflon spring retainer screw that is located in the sorius and the Sorius ADJ second stage valve barrel.

After taking out the second stage valve barrel there is a small spring retainer ring made of teflon that has to be removed before disassembling of the second stage barrel.

€ 19,00

Material: Brass

SKU: 4000-SST-001



SHERWOOD MAGNUM CW ENVIRONMENTAL CAP TOOL

The three-pin socket for Sherwood first stage is used to open and close the environmental end cap of the Sherwood Magnum, Sherwood Brut, and the Sherwood SR1 first stage.

The tool features a 3/8" drive, allowing torque to be applied.

€ 17,00 | Material: Aluminium | SKU: 3000-SST-001



SHERWOOD SR SERIES FIRST STAGE DIAPHRAGM CAP RETAINER TOOL

This specialized Sherwood scuba tool is used to open and close the diaphragm retainer cap from the Sherwood SR series first stage.

€ 20,00 | Material: Acetal | SKU: 1200-SST-014



SHERWOOD SR SERIES PISTON FLANGE AND SEAT RETAINER TOOL

This specialized tool is used to open and close the piston stem and flange of the Sherwood SR series first stage.

The tool can be used in two different ways.

- Removing and Installing the SR1 First Stage Seat Retainer
- It can also be used to install the piston stem and flange off the SR 1 first stage.

€ 20,00 | Material: Stainless steel | SKU: 2000-SST-006



SHERWOOD SR SERIES PISTON STEM O-RING INSTALLATION TOOL

Specialized tool to safely slide the o-rings over the threaded part of the Sherwood first-stage piston stem.

Specialized tool to safely slide the o-rings over the threaded part of the Sherwood first-stage piston stem. Place the tool over the sharp threads of the Sherwood SR piston stem, after which the o-rings are easy to install.

€ 6,00 | Material: Acetal | SKU: 1000-SST-016



SHERWOOD SR SERIES SECOND STAGE COVER RETAINER TOOL

Opening the Sherwood SR series second stage cover retainer tool is easiest by placing the tool with its tapers in the openings of the cover retainer ring.

€ 16,00 | Material: Acetal | SKU: 1000-SST-013



SHERWOOD SR SERIES SECOND STAGE POPPET INSTALLATION TOOL

This tool is used to easily install the Sherwood SR second stage poppet.

By placing the poppet with the thick side inside the tool the fins will slide in the recesses this way the tool makes sure the position of the poppet after placement in the second stage is always in the right direction.

€ 12,00

| Material: Acetal

| SKU: 1000-SST-019



SUUNTO VISE BLOCK FOR QUICK RELEASE COUPLER

This block can be put in your vise to make the disassembly and assembly of the Suunto quick-release coupler a piece of cake.

€ 19,00

| Material: Blue acetal

| SKU: 1000-SST-068



SUUNTO QUICK RELEASE TOOL

Disassembly and assembly of the Suunto quick release coupler.

The tool can be used to open the coupler by hand or if it is heavily corroded you can use a 14 mm or 9/16 inch wrench.

€ 29,00

| Material: Stainless steel

| SKU: 2000-SST-009



SUUNTO GUIDING PIN FOR QUICK DISCONNECT

Reinstalling the O-rings on the Suunto quick release coupler.

Use this tool to push the small O-ring back in the bottom of a serviced quick release coupler

€ 9,00

| Material: Aluminium

| SKU: 2000-SST-055



APEKS C-SPANNER

Custom made C-spanner fits all models of Apeks first stages. It is used to remove and install environmental end caps and diaphragm clamps.

The C-spanner is fitted with a 3mm hardened steel tip and the size is 1,7 inch (43,18mm)

€ 19,00

| Material: Aluminium

| SKU: 3000-SST-004



APEKS DRY SUIT VALVE BACKPLATE TOOL

Remove and install the low profile automatic dump valve and low profile swivel inflator from and onto the drysuit.

The tool can be used together with a 32mm wrench in case more torque is needed.

€ 23,00

| Material: Acetal

| SKU: 1200-SST-021



APEKS DRY SUIT INFLATOR TOOL SET

Used to separate the valve body of the Apeks low pressure swivel inflator valve.

Place the valve in the black base of the toolset and gently push out the inner part of the low pressure swivel with the white part of the tool.

€ 26,00

| Material: Acetal

| SKU: 1000-SST-008



APEKS HP BALANCE CHAMBER PLUG O-RING INSTALLATION BULLET

This tool will assist the technician when placing the O-ring on the Apeks balance chamber, cap the tool over the chamber plug and slide the O-ring in place.

Not using this plug risks damaging the O-ring on the sharp threads of the balance chamber plug.

€ 6,00

| Material: Acetal

| SKU: 1000-SST-005



APEKS / AQUALUNG O-RING ASSIST TOOL FOR BAL. 2ND STAGE BARREL

Stretching an O-ring to much can cause damage. this tool will assist the technician when placing the O-ring over the thick edge of the balanced 2nd stage barrel.

Place the tool over the thick end of the 2nd stage barrel and slide the O-ring in place

€ 7,00

| Material: Acetal

| SKU: 1000-SST-014



APEKS COVER TOOL FOR APEKS AT, T, TX AND ATX

This tool will assist in the removal and installation of the second stages covers on the AT, T, TX and ATX.

Place the tool with the round part inside the cover and turn it to open or close the cover.

€ 19,00

Material: Aluminium

SKU: 1300-SST-001



APEKS 2 IN 1 FLIGHT FIRST AND SECOND STAGE TOOL

Heavy-duty Apeks Flight tool that can be used in 2 different ways on the first and the second stage of the Apeks flight regulators.

- Removal and installation of the first stage composite diaphragm retainer (Max. Torque 20Nm).
- Remove and install the inner locking ring into the second stage case.

€ 22,00

Material: Acetal / Stainless steel

SKU: 1200-SST-010



APEKS LEVER HEIGHT SETTING TOOL FOR TX100

Used to verify the lever height during the final set-up of Apeks TX100 second stage.

€ 14,99

Material: Acetal

SKU: 1000-SST-023



APEKS LEVER HEIGHT SETTING TOOL FOR TX20, TX40 AND TX50

Used to verify the lever height during the final set-up of Apeks TX 20, 40 and 50 second stages.

€ 14,99

Material: Acetal

SKU: 1000-SST-022



APEKS LEVER HEIGHT SETTING TOOL FOR XL4 SECOND STAGE

Used to verify the lever height during the final set-up of Apeks XL4 second stage.

€ 21,00

Material: Acetal

SKU: 1000-SST-031



APEKS XTX COVER TOOL

This tool will assist in the removal and installation of the second-stage cover on the new model Apeks XTX.
Place the tool with the formed part inside the cover and turn it to open or close the cover.

This tool is for the new XTX model

€ 16,00

Material: Acetal

SKU: 1000-SST-037



APEKS XTX (old model) COVER TOOL

Technical specifications This tool will assist in the removal and installation of the second-stage cover on the old model Apeks XTX.
Place the tool with the formed part inside the cover and turn it to open or close the cover.

€ 16,00

Material: Acetal

SKU: 1000-SST-039



APEKS XTX LEVER HIGHT SETTING TOOL

This tool is used to verify the lever height during the final set-up of Apek XTX second stage.
The tool has two sides a flow side and a no-flow side.

This tool is for the new XTX model

€ 14,99

Material: Acetal

SKU: 1000-SST-042



APEKS XTX (OLD MODEL) LEVER HIGHT SETTING TOOL

This tool is used to verify the lever height during the final set-up of Apek XTX (old model) second stage.
The tool has two sides a flow side and a no-flow side.

This tool is for the old XTX model

€ 15,00

Material: Acetal

SKU: 1000-SST-039



APEKS MTX-R AND MTX COVER TOOL

This cover tool opens the cover of the Apeks MTX-R and MTX second stage.

Place the tabs of the tool inside the holes on the front cover of the Apeks MTX-R or MTX second stage.

€ 15,00

Material: Acetal

SKU: 1000-SST-066



APEKS ENVIRONMENTAL SEAL CAP SOCKET FOR MTX-R AND DB-4

This tool is used to remove the environmental seal cap on top of the Apeks MTX-R and the Apeks DB-4 first stage.

The tool incorporates a 1/2" drive so it can be removed and closed with a torque or a socket wrench.

€ 14,00

| Material: Acetal

| SKU: 1000-SST-065



APEKS XTX LEVER HIGHT SETTING TOOL

This socket fits on all Apeks yoke (INT) first stage regulators (except the flight).

Located at the top of the socket is an 8mm hex connection which is easily accessible with an 8mm long hex key with a connection to 3/8".

€ 19,99

| Material: Stainless steel

| SKU: 2000-SST-016

**CRESSI MC7 SEAL CAP SOCKET (old model)**

Assemble and disassemble the older model seal cap socket on the Cressi MC7 model's first stage. The tool features a 1/2" drive, allowing torque to be applied.

The Cressi seal cap socket for MC7 is precision machined from acetal and has hardened stainless steel pins.

€ 15,00

| Material: Acetal

| SKU: 1000-SST-010

**CRESSI ENVIRONMENTAL SEAL CAP TOOL**

Assemble and disassemble the environmental cap on several Cressi first stages (MC7, MC9).

The stainless steel handle enables the part to be tightened or loosened, do not over tighten the environmental cap.

€ 17,50

| Material: Acetal / Stainless steel

| SKU: 1200-SST-004

**CRESSI XS COVER TOOL**

This tool is used to open and close the cover off the Cressi XS second stage.

€ 15,00

| Material: Acetal

| SKU: 1000-SST-067

Most universal tools should be present in every shop these tools are a welcome addition to the brand specific tools.



UNIVERSAL SLOTTED 2 IN 1 CAP DRIVER TOOL

Removing and installing the slotted cap found on many first stages. because both ends have different sizes it fits on a wide variety of slotted caps.

The tool can be used as a hand tool or with a 14mm or 9/16" wrench.

€ 16,00

| Material: Stainless steel

| SKU: 2000-SST-003



UNIVERSAL CILINDER VALVE TOOL

This tool is for the removal and installation of valve handwheel nuts. It fits most manufacturer's valves.

€ 16,00

| Material: Acetal / Stainless steel

| SKU: 1200-SST-003



UNIVERSAL POWER INFLATOR TOOL

When installing or removing the internal assembly as well as the inflator button from several brands like Sherwood, Hollis and Apeks this tool comes in handy.

€ 19,00

| Material: Stainless steel

| SKU: 2000-SST-057



UNIVERSAL FIRST STAGE O-RING PISTON TOOL

This bullet will fit most common models of piston first stages. Below some examples: Scubapro MK2, Aqualung Calypso, Mares R2S, Sherwood Brut, Cressi AC2 and more.....

€ 7,00

| Material: Brass

| SKU: 4000-SST-044



UNIVERSAL CYLINDER VALVE INSTALLATION AND REMOVAL TOOL

To remove or install the cylinder valve from a scuba cylinder.

Tool is made from brass with G5/8 Threads

€ 39,00

| Material: Brass

| SKU: 4000-SST-003



UNIVERSAL SLOTTED ORIFICE DRIVER

When removing and installing the slotted orifice that is used in most second stage regulators, this tool comes in handy. The handle on the tool is knurled for a better grip.

€ 14,00

Material: Stainless steel

SKU: 2000-SST-037



UNIVERSAL DIN RETAINER TOOL

Having problems getting a broken (rounded hex key) DIN connector of a first stage. This tool supported in your vise will get the connector to come loose.

€ 11,00

Material: Aluminium

SKU: 3000-SST-043



UNIVERSAL FILTER RETAINER MOUNTING TOOL

Installing the star washer in a straight way is made easy with this tool. Just push it on top of the star washer and the filter and the combination will be installed in its right place.

€ 7,00

Material: Aluminium

SKU: 3000-SST-022



UNIVERSAL ORIFICE SEAT EXTRACTOR TOOL

Taking the orifice out of the second stage barrel or 2nd stage inlet fittings can be a difficult job.

Using this tool it does not matter if you have a Hex or slotted orifice, just push it in slowly and pop the small orifice out.

€ 3,00

Material: Acetal

SKU: 1000-SST-061



UNIVERSAL HP AND LP O-RING INSTALLATION BULLIT SET

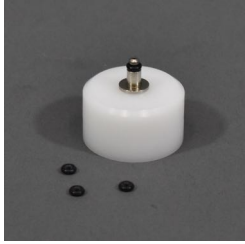
Regulator hoses also need new O-rings during service but because of the sharp threats many of these O-rings get damaged in the process of putting them on.

Whit this tool your O-rings stay in perfect shape, just put the tool over your hose and slide the O-ring in place.

€ 12,00

Material: Brass

SKU: 4000-SST-045



UNIVERSAL HP SWIVEL O-RING INSTALLATION ASSIST TOOL

The HP swivel is a tiny part and most of the time it is difficult to put O-rings on the small HP swivel.
By using this tools the work gets done in a matter of seconds.

€ 4,00 | Material: Acetal | SKU: 1000-SST-046



UNIVERSAL HEAVY DUTY FIRST STAGE HOLDER

This heavy-duty first stage holder has two different sides one is a LP with 3/8 UNF threads and the other one is a HP with 7/16 UNF threads.
The best way to use this tool is by clamping it in your vise so you have your hands free to work on your equipment.

€ 17,00 | Material: Stainless steel | SKU: 2000-SST-001



UNIVERSAL FIRST STAGE HOLDER

This first stage holder has two different sides one is a LP with 3/8 UNF threads and the other one is a HP with 7/16 UNF threads.
The best way to use this tool is by clamping it in your vise so you have your hands free to work on your equipment.

€13,00 | Material: Stainless steel | SKU: 2000-SST-056



UNIVERSAL HP SEAT EXTRACTOR TOOL

Getting the HP seat out of many piston first stages is proved to be a problem.
When using this tool the HP seat will come out of the piston when it is placed over the tool and a little pressure is applied on the piston.

€ 14,00 | Material: Acetal | SKU: 1200-SST-039



UNIVERSAL / 2ND STAGE POPPET HOLDER (4 SLOTS)

Holding the poppet in position can be done with this tool while the technician is screwing down the nylon nut. This tool fits poppets which have 4 tabs.

€ 7,95 | Material: Aluminium | SKU: 3000-SST-011



UNIVERSAL 2ND STAGE POPPET HOLDER (3 SLOTS)

Holding the poppet in position can be done with this tool while the technician is screwing down the nylon nut. This tool fits poppets which have 3 tabs.

€ 7,95 | Material: Aluminium | SKU: 3000-SST-003



UNIVERSAL C-SPANNER (1,4" - 35,55mm)

Our C spanners come in a range of 4 spanners with different sizes.

35,55mm / 1,4" (SKU: 3000-SST-008)
 38,09mm / 1,5" (SKU: 3000-SST-015)
 40,64mm / 1,6" (SKU: 3000-SST-010)
 43,18mm / 1,7" (SKU: 3000-SST-014)

€ 19,00 | Material: Aluminium | SKU: 3000-SST-008



UNIVERSAL C-SPANNER (1,5" - 38,09mm)

Our C spanners come in a range of 4 spanners with different sizes.

35,55mm / 1,4" (SKU: 3000-SST-008)
 38,09mm / 1,5" (SKU: 3000-SST-015)
 40,64mm / 1,6" (SKU: 3000-SST-010)
 43,18mm / 1,7" (SKU: 3000-SST-014)

€ 19,00 | Material: Aluminium | SKU: 3000-SST-015



UNIVERSAL C-SPANNER (1,6" - 40,64mm)

Our C spanners come in a range of 4 spanners with different sizes.

35,55mm / 1,4" (SKU: 3000-SST-008)
 38,09mm / 1,5" (SKU: 3000-SST-015)
 40,64mm / 1,6" (SKU: 3000-SST-010)
 43,18mm / 1,7" (SKU: 3000-SST-014)

€ 19,00 | Material: Aluminium | SKU: 3000-SST-010



UNIVERSAL C-SPANNER (1,7" - 43,18mm)

Our C spanners come in a range of 4 spanners with different sizes.

35,55mm / 1,4" (SKU: 3000-SST-008)
 38,09mm / 1,5" (SKU: 3000-SST-015)
 40,64mm / 1,6" (SKU: 3000-SST-010)
 43,18mm / 1,7" (SKU: 3000-SST-014)

€ 19,00 | Material: Aluminium | SKU: 3000-SST-014



UNIVERSAL POPPET TOOL FOR BALANCED SECOND STAGES

To install the poppet correctly into the barrel of the second stage (make sure the feet from the poppet are facing down before installation).

€ 15,00

Material: Acetal

SKU: 1000-SST-012



UNIVERSAL INFLATOR O-RING REPLACEMENT TOOL SET

Installation of the O-ring in the LP inflator connector.

€ 16,50

Material: Acetal

SKU: 1000-SST-015



UNIVERSAL HOSE PROTECTOR INSTALLATION TOOL

The universal hose protector tool can be used to put hose protectors on LP or HP hoses. The tool can also be used to slide a console over the HP hose.

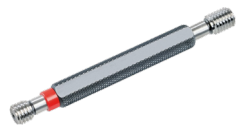
€ 32,00

Material: Acetal/stainless steel/brass

SKU: 1240-SST-001

SCUBA CYLINDER THREAD GAUGE FOR M25X2 INTERNAL THREADS

This tool is used to check if the internal threads of an M25 thread size scuba cylinder are still ok. The tool has a go side and a no-go side.



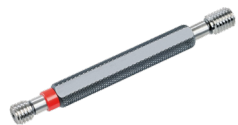
€ 119,00

Material: Stainless steel

SKU: 1800-SST-062

SCUBA CYLINDER THREAD GAUGE FOR G3/4X14 INTERNAL THREADS

This tool is used to check if the internal threads of a G3/4x14 thread size scuba cylinder are still ok. The tool has a go side and a no-go side.



€ 139,00

Material: Stainless steel

SKU: 1800-SST-063

**GO SCUBA VALVE THREAD GAUGE FOR M25X2 EXTERNAL THREADS**

This tool is used to check if the external threads of an M25X2 thread size scuba valve are still ok.

This is the GO version which means if it does fit on the threads that they are still ok.

€ 119,00

| Material: Stainless steel

| SKU: 1800-SST-065

**GO SCUBA VALVE THREAD GAUGE FOR G3/4X14 EXTERNAL THREADS**

This tool is used to check if the external threads of a G3/4x14 thread size scuba valve are still ok.

This is the GO version which means if it does fit on the threads that they are still ok.

€ 139,00

| Material: Stainless steel

| SKU: 1800-SST-064

**ULTRASONIC CLEANER 2 LITER (PARTS BASKET INCLUDED)**

135x150x100mm 2 liter, Digital time and temperature
Temperature-Regulated Heating between 0-80 degrees Celcius
Time-Regulated between 0-99 minutes
220 volt, 60 watt, 40 Khz, 1 ultrasonic element
The frequency can be set between hi and low for more delicate parts.

€ 169,00

| Material: Stainless steel

| SKU: 1800-SST-060



SCUBAPRO TOOLS STARTER KIT

This starter kit consists of 13 tools and is the ideal kit to start servicing Scubapro scuba gear.

In addition to this set we advise to have a look at our [universal scuba tools](#).

€ 126,65

SKU: 1800-SST-039



APEKS TOOLS STARTER KIT

This starter kit consists of 9 tools and is the ideal kit to start servicing Apeks scuba gear.

In addition to this set we advise to have a look at our [universal scuba tools](#).

€ 104,96

SKU: 5000-SST-070



MARES TOOLS STARTER KIT

This starter kit consists of 9 tools and is the ideal kit to start servicing Mares scuba gear.

In addition to this set we advise to have a look at our [universal scuba tools](#).

€ 89,00

SKU: 1800-SST-040



AQUALUNG TOOLS STARTER KIT

This starter kit consists of 10 tools and is the ideal kit to start servicing Aqualung scuba gear.

In addition to this set we advise to have a look at our [universal scuba tools](#).

€ 105,80

SKU: 1800-SST-049



UNIVERSAL TOOLS STARTER KIT

This starter kit consists of 11 tools and is the ideal kit In addition to the [brand specific tool kits](#).

€ 153,00

SKU: 1800-SST-044



SCUBAPRO AIR2 (5TH GENERATION) TOOLS KIT

This tool-set is a collection of all the tools needed to service a Scubapro AIR2 5th generation regulator.

Note: For the service of the 5th generation AIR2, the service technician uses a number of tools that differ from the other generation AIR2 regulators.

€ 60,00

SKU: 1800-SST-066



SCUBAPRO COVER RINGS TOOL KIT

A nice collection of 7 Scubapro second stage cover tools that open more than 17 different Scubapro second stage regulators.

€ 179,10

SKU: 1000-SST-041



SUUNTO QUICK RELEASE COUPLER TOOL KIT

This tool-set is a collection of all the tools needed to service a Suunto quick-release coupler

€ 49,00

SKU: 7000-SST-040



APEKS COVER RING TOOL SET

A nice collection of 3 Apeks second stage cover tools precision machined from acetal and stainless steel.

Apeks XTX cover tool - old model, Apeks XTX cover tool - new model, Apeks MTX-R and MTX cover tool.

€ 42,00

SKU: 1800-SST-067



AQUALUNG COVER RING TOOL SET

A nice collection of 3 Aqualung second stage cover tools precision machined from acetal and stainless steel.

Aqualung Core cover tool, Aqualung ABS octopus cover tool, Aqualung Mikron cover tool, Aqualung Legend I series and Titan LX cover tool.

€ 58,50

SKU: 1800-SST-068



UNIVERSAL TOOLS KIT BASIC EDITION

This Basic kit consists of 11 tools and is the ideal basic kit In addition to the brand specific tools kit.

Precision machined from white acetal, Brass, Aluminum, and Stainless steel.

€ 95,00

SKU: 1800-SST-069



SCUBAPRO DELUXE TOOLS KIT

This starter kit consists of 14 tools and is the ideal kit to start service on Scubapro scuba gear.

In addition to this set we advise to have a look at our [universal scuba tools](#).

€ 237,00

SKU: 7000-SST-038



APEKS DELUXE TOOLS KIT

This deluxe kit consists of 9 tools and is the ideal kit to start service on Apeks scuba gear.

In addition to this set we advise to have a look at our [universal scuba tools](#).

€ 194,00

SKU: 7000-SST-035



MARES DELUXE TOOLS KIT

This deluxe kit consists of 11 tools and is the ideal kit to start service on Mares scuba gear.

In addition to this set we advise to have a look at our [universal scuba tools](#).

€ 199,00

SKU: 7000-SST-036



AQUALUNG DELUXE TOOLS KIT

This deluxe kit consists of 13 tools and is the ideal kit to start service on Aqualung scuba gear.

In addition to this set we advise to have a look at our [universal scuba tools](#).

€ 226,90

SKU: 7000-SST-037

GENERAL WORKSHOP TOOLS.



3/8" TO HEX 5MM (LONG)

Hex 5mm long key with connection to 3/8" Socket Wrench
1st class quality tool from the German brand Stahlwille

Fits on some of the Mares first stage regulators.

€ 19,00

SKU: 1800-SST-005



3/8" TO HEX 6MM (LONG)

Hex 5mm long key with connection to 3/8" Socket Wrench
1st class quality tool from the German brand Stahlwille

This is one of the most used hex keys in a divers workshop it fits on the DIN inlet fittings of most brands: Scubapro, Apeks, Aqualung, Dive Rite, Mares and many more.

€ 19,00

SKU: 1800-SST-006



3/8" TO HEX 8MM (LONG)

Hex 5mm long key with connection to 3/8" Socket Wrench
1st class quality tool from the German brand Stahlwille

To install or remove the environmental cap of the Aqualung Legend. Also to be used on the the spring adjuster of the Titan, Titan LX, Core, Legend and Mikron..

€ 19,00

SKU: 1800-SST-007



BCD BLADDER FLANGE TOOL

Use the Bladder Flange Tool to remove and install bladder flanges on older BCs not incorporating the newer welded flange technology.

€ 14,00

SKU: 1000-SST-009



STAHLWILLE 1/4" MALE INSIDE TO 3/8" OUTSIDE ADAPTER

1/4" male inside to 3/8" outside adapter to be used with our torque wrench

€ 15,00

SKU: 1800-SST-012

GENERAL WORKSHOP TOOLS.



CONNECTION 3/8" TO TORX 30

Torx 30 key with connection to 3/8" Socket Wrench
1st class quality tool from the German brand Stahlwille.

To remove the torx screws out of the cap from the Scubapro MK21 first stage.

€ 19,00

SKU: 1800-SST-008



CONNECTION 3/8" TO 7/32"

Hex 7/32" key with connection to 3/8" Socket Wrench
1st class quality tool from the German brand Stahlwille.

Ideal to remove the swivel retainer of the Scubapro MK25 & MK10 first stages.

€ 25,00

SKU: 1800-SST-003



CONNECTION 3/8" TO 5/32"

Hex 5/32" key with connection to 3/8" Socket Wrench
1st class quality tool from the German brand Stahlwille

€ 25,00

SKU: 1800-SST-004



CONNECTION 3/8" TO 1/4"

Hex 3/8" key with connection to 3/8" Socket Wrench
1st class quality tool from the German brand Stahlwille.

€ 25,00

SKU: 1800-SST-001



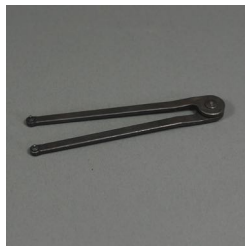
35 TO 60MM ADJUSTABLE HOOK SPANNER

35 to 60mm Adjustable hook spanner to be used for almost all brands to install or remove 1st stage regulators caps.

€ 35,00

SKU: 1800-SST-035

GENERAL WORKSHOP TOOLS.



1,5MM ADJUSTABLE FACE SPANNER

This tool is something a technician can't do without, it can be used for several different brands and parts of diving gear.
Pin size is 1,5mm.

€ 16,00

SKU: 1800-SST-034



2MM ADJUSTABLE FACE SPANNER

This tool is something a technician can't do without, it can be used for several different brands and parts of diving gear.
Pin size is 2mm.

€ 16,00

SKU: 1800-SST-009



3/16" EXTRA LONG HEX KEY

3/16" extra long hex key used for adjusting the orifice of the Scubapro AIR-2 and the Tusa Duo-AIR regulators

€ 14,00

SKU: 1800-SST-050



UNIVERSAL HOSE WRENCH 9/16" TO 5/8"

Wrench imperial sizes of 9/16" to 5/8"
This wrench fits on about 85% of all scuba hoses and therefore it's the ideal wrench to have in your scuba gear bag.

€ 17,50

SKU: 1800-SST-055



WRENCH 5/8" TO 11/16"

Wrench imperial sizes of 5/8" to 11/16"
This wrench fits ideal on Apeks and Aqualung second stages.

€ 19,00

SKU: 1800-SST-030

GENERAL WORKSHOP TOOLS.



WRENCH 3/4" TO 13/16"

Wrench 3/4" to 13/16"
Fits on most older Aqualung second stages.

€ 23,00

SKU: 1800-SST-029



TORQUE WRENCH 5-25Nm

This high-quality torque wrench has a working range of 5-25 Nm. The connection is a 1/4" drive.

This torque wrench is a tool that can not be missed in any technicians workshop.

€ 89,00

SKU: 1800-SST-011



COMBINATION WRENCH 1/4"

Combination wrench 1/4"
Ideal when taking of or putting on second stage poppet nuts.

€ 14,00

SKU: 1800-SST-026



WRENCH 32MM

Single Open End Wrench 32mm.
Material: Vanadium steel, manganese phosphated

€ 13,00

SKU: 1800-SST-027



WRENCH 34MM

Single Open End Wrench 34mm.
Material: Vanadium steel, manganese phosphated

€ 13,00

SKU: 1800-SST-028

GENERAL WORKSHOP TOOLS.



SCHRADER VALVE TOOL

When removing the Schrader valve that is used in some BCD inflators as well as inflator hoses this tool comes in handy.

€ 9,00

SKU: 1800-SST-042



AIR GUN

Air gun with a connection for an air compressor.

€ 15,00

SKU: 1800-SST-043



MAGNETIC VISE JAWS

Side cutters, Stainless steel.

€ 19,00

SKU: 1800-SST-041



SCREWDRIVER SLOTTED

Screwdriver slotted.

€ 13,00

SKU: 1800-SST-019



SCREWDRIVER PH-1 PHILIPS

Screwdriver PH-1 Philips.

€ 13,00

SKU: 1800-SST-018

GENERAL WORKSHOP TOOLS.



SCREWDRIVER PH-0 PHILIPS

Screwdriver Philips size PH-0.

€ 13,00

SKU: 1800-SST-017



NUTDRIVER 1/4"

Nutdriver 1/4"

€ 16,00

SKU: 1800-SST-014



NUTDRIVER 5,5MM

Nutdriver 5,5mm

€ 16,00

SKU: 1800-SST-013



KNIPEX PLIERS WRENCH

- Replaces the need for sets of metric and imperial spanners
- Smooth jaws for damage free installation of plated fittings
- Working directly on chrome!

€ 65,00

SKU: 1800-SST-033



INTERNAL CIR-CLIP PLIERS

Internal Cir-clip pliers.

€ 17,00

SKU: 1800-SST-023

GENERAL WORKSHOP TOOLS.



SIDE CUTTERS

Side cutters, Stainless steel.

€ 14,99

SKU: 1800-SST-020



BEND NOSE PLIERS

Bend nose pliers

€ 17,00

SKU: 1800-SST-022



FLAT NOSE PLIERS

Flat nose pliers

€ 17,00

SKU: 1800-SST-021



ALLEN KEY SET METRIC

The kit contains 9 pieces of ball ended hex keys: 1.5, 2, 2.5, 3, 4, 5, 6, 8, 10 mm. A must for every serious technician.

€ 14,00

SKU: 1800-SST-002



ALLEN KEY SET IMPERIAL

The kit contains 9 pieces of hex keys: 3/8", 5/16", 1/4", 3/16", 5/32", 1/8", 3/32", 5/64", 1/16". A must for every serious technician.

€ 14,00

SKU: 1800-SST-051

CHARGING PANELS

2 PORT AIR CHARGING PANEL (200 BAR/3000PSI)



The 2 port air charging panel (200 bar / 3000Psi) is ideal for small dive shops or private use, as well as paintball clubs.

The unit has 2 charging points (max 232Bar / 3000Psi) and a manometer.

€ 1299,00

SKU: 7000-SST-022

4 PORT AIR CHARGING PANEL (300BAR/4500PSI)



The 4 port charging panel is ideal for dive shops, dive clubs, and dive schools, as well as medium-sized breathing air filling stations.

The unit can fill 200 Bar / 3000 Psi as well as 300 Bar / 4500 Psi scuba cylinders.

€ 2599,00

SKU: 7000-SST-021

3 BANK STORAGE PANEL (300BAR/4500PSI)



The 3 bank storage (cascade) panel is ideal for dive shops, dive clubs, and dive schools, as well as medium-sized breathing air filling stations.

The unit can be connected between storage tanks (max 300Bar / 4500Psi) and a charging panel.

€ 1599,00

SKU: 7000-SST-023

CYLINDER CHARGING CONNECTOR (200BAR/3000PSI)



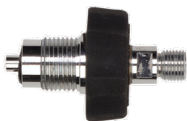
200 Bar / 3000 Psi cylinder charging connector

Connects between the filling hose and a 200 Bar / 3000 Psi scuba cylinder.

€ 36,00

SKU: 7000-SST-029

CYLINDER CHARGING CONNECTOR (300BAR/4500PSI)



Connects between the filling hose and a 300 Bar / 4500 Psi scuba cylinder.

Please note: this connector can only be used on 300 Bar / 4500 Psi scuba cylinders.

€ 44,00

SKU: 7000-SST-028

CHARGING PANELS



1 METER CYLINDER CHARGING HOSE (FOR CHARGING PANEL)

Thermoplastic fabric braided non kinking charging hose

2x Stainless steel 1/4 BSPP (G1/4) female ends with o-ring seal

Hose colour is black (for air use only)

Length 1 meter / 39.37 inch (Max working pressure 345 Bar / 5000 Psi)

€ 149,00

SKU: 7000-SST-030



1,5 METER CYLINDER CHARGING HOSE (FOR CHARGING PANEL)

Thermoplastic fabric braided non kinking charging hose

2x Stainless steel 1/4 BSPP (G1/4) female ends with o-ring seal

Hose colour is black (for air use only)

Length 1 meter / 39.37 inch (Max working pressure 345 Bar / 5000 Psi)

€ 159,00

SKU: 7000-SST-031



2 METER CYLINDER CHARGING HOSE (FOR CHARGING PANEL)

Thermoplastic fabric braided non kinking charging hose

2x Stainless steel 1/4 BSPP (G1/4) female ends with o-ring seal

Hose colour is black (for air use only)

Length 1 meter / 39.37 inch (Max working pressure 345 Bar / 5000 Psi)

€ 169,00

SKU: 7000-SST-032

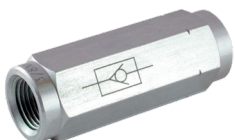


G1/2 MALE WITH O-RING TO 6MM PIPE CONNECTOR

G1/4 male with O-ring to 6mm pipe connector

€ 9,00

SKU: 7000-SST-034



ONE WAY VALVE

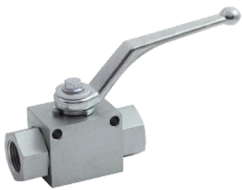
One way valve G1/4 female to G1/4 female

This valve blocks the air from going in the reverse direction because the pressure is lower on that end.

€ 29,00

SKU: 7000-SST-027

CHARGING PANELS



WALL MOUNTED BALL VALVE

Wall-mounted ball valve G1/4 female to G1/4 female

€ 69,00

|

|

SKU: 7000-SST-033

INSTRUMENTS



DIGITAL MAGNEHELIC METER

For measuring differential pressure it is used to set up the inhalation effort for 2nd stages.

€ 84,99

SKU: 1800-SST-053



MOUTHPIECE ADAPTER FOR DIGITAL MAGNEHELIC METER

This adapter is used to connect the second stage regulator (when mouthpiece removed) to a [digital magnehelic meter](#) used for setting up or checking the cracking effort.

€ 19,00

SKU: 1000-SST-003



INTERMEDIATE PRESSURE GAUGE FOR INFLATOR HOSE

The compact {1.5 in | 3.8 cm } diameter ultra-lightweight dual-scale (PSI and BAR) intermediate pressure gauge is ready to go with you anywhere. Perfect for helping diagnose problems in the field, it plugs into any standard BC low pressure inflator hose.

€ 25,00

SKU: 1800-SST-054



SLOTTED SECOND STAGE ADJUSTMENT TOOL

This specialized tool connects in-line between the 2nd stage regulator and the LP hose, allowing adjustments while the hose is pressurized.

€ 39,00

SKU: 1800-SST-077



M25 BENCH MOUNT

M25 bench mount with 3x Stainless steel connection bolts. can be used together with all of our test benches.

- Bottom connection 1/4" gas (straight)
- Side connection 1/4" gas (straight).

€ 128,00

SKU: 7000-SST-010

INSTRUMENTS



SLOTTED INLINE SECOND STAGE ADJUSTMENT TOOL WITH IP GAUGE

This specialized tool connects in-line between the 2nd stage regulator and the LP hose, allowing adjustments while the hose is pressurized.

Using the included pressure gauge the intermediate pressure (IP) of the first stage is adjusted if necessary.

€ 59,00

SKU: 1800-SST-052



SLOTTED INLINE SECOND STAGE ADJUSTMENT TOOL

This specialized tool connects in-line between the 2nd stage regulator and the LP hose, allowing adjustments while the hose is pressurized.

€ 45,00

SKU: 1800-SST-075



HEX INLINE SECOND STAGE ADJUSTMENT TOOL WITH IP GAUGE

This specialized tool connects in-line between the 2nd stage regulator and the LP hose, allowing adjustments while the hose is pressurized.

Using the included pressure gauge the intermediate pressure (IP) of the first stage is adjusted if necessary.

€ 59,00

SKU: 1800-SST-074



HEX INLINE SECOND STAGE ADJUSTMENT TOOL

This specialized tool connects in-line between the 2nd stage regulator and the LP hose, allowing adjustments while the hose is pressurized.

€ 45,00

SKU: 1800-SST-076

INSTRUMENTS



DIN CYLINDER CONNECTION VALVE 300 BAR

This DIN valve can be connected to a DIN cylinder valve.
Often used to connect our Standard or starter test bench to an air source.

- Front connection DIN
- Back connection G1/4" with 60 cone inside
- Bleeder valve

€ 128,00

SKU: 7000-SST-017



DIN CYLINDER CONNECTION VALVE 232 BAR

This DIN valve can be connected to a DIN cylinder valve.
Often used to connect our Standard or starter test bench to an air source.

- Front connection DIN
- Back connection G1/4" with 60 cone inside
- Bleeder valve

€ 99,00

SKU: 7000-SST-018



BENCH MOUNT WITH M25 VALVE

M25 bench mount with 3x Stainless steel connection bolts and M25 valve.

Can be used together with all of our test benches.

- Bottom connection 1/4" gas (straight)
- Side connection 1/4" gas (straight).

€ 179,00

SKU: 7000-SST-012



MICRO BORE HOSE

1 meter long test bench micro bore hose.

- 1 connection is female 1/8 BSP
- 1 connection is female 1/4 BSP

€ 35,00

SKU: 7000-SST-011



TEST BENCH ANALOQUE MAGNEHELIC ADAPTER

This magnehelic adapter can only be used together with our test benches. It comes with a special connector that fits on the magnehelic meter connection on all of our test benches equipped with this device.

€ 22,50

SKU: 7000-SST-009

INSTRUMENTS



PROFESSIONAL TEST BENCH

When servicing dive gear is your profession this test bench is your buddy, it is equipped with an inhalation /exhalation magnehelic meter, a big intermediate pressure gauge with inflator hose connection. This test bench can be connected to a supply pressure of 330BAR/4800PSI witch can be reduced by a pressure regulator to your working pressure.

€ 1286,00

SKU: 7000-SST-004



STANDARD TEST BENCH

A must have for the small operator that wants to service their own gear, it is equipped with a supply pressure gauge, a middle pressure gauge with inflator hose connection and a magnehelic meter to measure the cracking or inhalation effort.

€ 499,00

SKU: 7000-SST-003



STARTER TEST BENCH

This unique device can be used to test SCUBA regulators at a basic level, it is equipped with a supply pressure gauge and a big middle pressure gauge with inflator hose connection both as well in BAR as PSI.

€ 299,25

SKU: 7000-SST-002



RESORT TEST BENCH

The resort test bench is an ideal option for dive resorts and small service shops it is equipped with a small middle pressure gauge and a magnehelic meter to measure the cracking or inhalation effort and does not have to be connected to an air-supply.

€ 325,00

SKU: 7000-SST-013



PROFESSIONAL TEST BENCH 6MM PIPE CONNECTION KIT

This connection kit can be used to connect the Professional test bench to an air source (max 300 bar) and to the bench mount.

(With M25 valve) € 271,00 | SKU: 7000-SST-019

(Without M25 valve) € 235,00. | SKU: 7000-SST-007

INSTRUMENTS



G1/4 MALE TO G1/8 MALE CONNECTOR

G1/4 male to G1/8 male both sides are 60 degrees conical.

€ 14,00

SKU: 7000-SST-006



G1/4 MALE TO G1/4 MALE CONNECTOR

G1/4 male to G1/4 male both sides are 60 degrees conical.

€ 14,00

SKU: 7000-SST-008

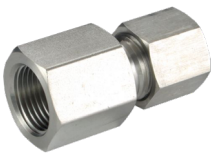


G1/4 FEMALE TO PIPE CONNECTOR

Connection female G-1/4 to 6mm pipe.

€ 15,00

SKU: 7000-SST-026



G1/4 FEMALE TO PIPE CONNECTION

G1/4 female to 6mm pipe connection, mostly used to connect our test benches to 6mm stainless steel pipe.

€ 12,00

SKU: 7000-SST-039



BLIND STOP

Blind stop for side or bottom of bench mount.

€ 12,00

SKU: 7000-SST-005

INSTRUMENTS



PROFESSIONAL TEST BENCH CYLINDER CONNECTION KIT

This connection kit can be used to connect the Professional test bench to an air cylinder (232 Bar or max 300 bar) and to the bench mount.

(232 BAR) € 399,00 | SKU: 7000-SST-014

(300 BAR) € 428,00. | SKU: 7000-SST-016



STARTER AND STANDARD TEST BENCH CYLINDER CONNECTION KIT

This connection kit can be used to connect the [Starter](#) or the [Standard](#) test benches to an air cylinder (max 232 bar) and to the bench mount.

(With M25 valve) € 384,00 | SKU: 7000-SST-020

(Without M25 valve) € 345,00. | SKU: 7000-SST-001

SHIPPING

Fast and reliable delivery to any destination worldwide

Webshop (**retail only**):

After filling your basket in our webshop the total of your shipping expenses is automatically calculated at check-out, based on the shipping destination.

===== Orders above €250 are free of shipping costs. =====

Our goods are packed in boxes or padded envelopes to make sure your goods are reaching their destination without damaging.

Dealer conditions:

By Email:

This option is for dealers only, use our SKU codes for your order and send it by E-mail to info@divingondemand.com

Companies inside the EU but outside The Netherlands can receive an invoice without VAT if provided full company details and a registered EU VAT number. To make sure your invoice is without VAT, please contact us by E-mail.

Also dealers outside the EU can only order by email using our SKU codes or product description (orders for dealers accidentally made in our webshop can not be changed into dealer prices and/or VAT FREE orders).

Please note; we **do not** give dealer prices on General Workshop Tools.

===== Orders above €250 are free of shipping costs. =====