



2011 QUEST





# INNOVATION FOR FAMILY.

Today will be different. You've got Quest® on your side. When life comes calling, rely on the all-new modern 7-seater with style. Daily routine or family road trip, celebrate it all – with accommodations that are nothing but first-class. Say yes to a roof made of sky, sliding doors that open with one touch, and seats so incredibly easy to configure, you'll look for excuses to pack up and go. Quest. Innovation for family. Innovation for all.



Nissan Quest LE shown in Carbon Silver.



**Nissan Quest LE** shown in Carbon Silver.



A THOUSAND THINGS TO DO.  
**SO MUCH TO APPRECIATE.**

NEW WORLD.  
**YOUR QUEST.**



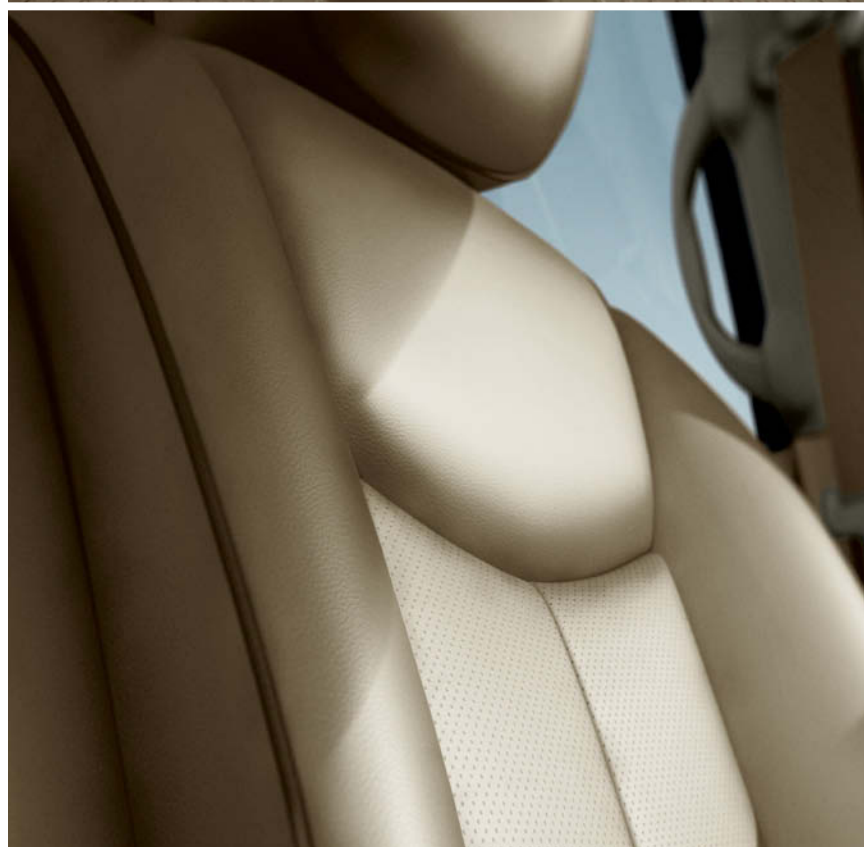
Nissan Quest LE shown in Airstream.





Nissan Quest LE shown in Café Latte Leather. U.S. instrumentation shown.





The image shows the interior of a minivan, specifically the second and third rows of seats. The seats are upholstered in a light beige or cream color with a textured fabric on the seat cushions and backrests. The interior is well-lit, and through the large side windows, a bright green lawn is visible. Outside, a young child in a light-colored shirt is crouching on the grass, and a small dog is running nearby. The overall atmosphere is bright and cheerful, suggesting a family-friendly environment.

# WE LOOK AT THINGS DIFFERENTLY.

**NOW YOU CAN TOO.**

On the next few pages, you'll see what it's like to have a Quest in your life. This minivan could be the most helpful member of your family. Imagine putting air in your tires and hearing a friendly beep of the horn when they're full. Freezing outside? Available Quick Comfort heated front seats get you warm fast. Look up to see not one, but two available glass moonroofs. Multi-tasking? Quest makes you a hero. From seating for 7 to filled with gardening supplies, you've never flipped and folded seats so easily. With a unique third row that folds forward instead of stowing in the rear, you can load up on spring blooms without stopping to drop off the groceries. It's your life Quest has in mind.



Nissan Quest LE shown in Café Latte Leather. U.S. instrumentation shown.

## SIT BACK AND RELAX.

Sometimes the simplest innovations are the most helpful. In Quest, not only does the second row fold flat, forward, and out of the way, so does the third. So instead of stowing seats, the cargo well behind the third row is a place to put whatever you like, whenever you like.

**Permanent rear storage well** – The cargo space behind the rear seats is always open for business, thanks to third-row seats that fold forward.

**Easy up, easy down** – Pull the release and the third-row seats fold right down. An available power-up feature brings them back into place at the push of a button.

**A second row you never have to remove** – The second row folds flat, which means no more wrestling with seats.

**Easy entry** – Move the second row out of the way, for third-row passengers to hop in or out.

**Where to put the long legs?** – Anywhere. With Quest's sliding second row, you can create more leg room where you need it, in the second or third row.



**Nissan Quest LE** shown in Café Latte Leather.



Anyway you look at it, Quest flips and folds like no other minivan.

**Quick Comfort heated front seats** – Get to cozy quicker. These available front-seat heaters warm you up super-fast.

**Comfort seating design** – Shaped and padded especially for improved posture support and comfort. Designed with your next road trip in mind.



**60/40 seats and permanent rear storage well** – The rear cargo area has two separate lids. Keep a flat cargo floor on one side, and leave the other lid open to carry taller things.



**Third-row seat down** – 4 of you, plus up to 2124 litres (75 cu. ft.) of cargo room.<sup>2</sup> And thanks to the clever no-stow, forward-folding third row, you can pack some gear in the permanent rear storage well in the rear.



**Second- and third-row seats down** – Just the pair of you off to the flea market. What will you bring home? With up to 3392 litres (119.8 cu. ft.) to fill, no telling.<sup>1</sup> And you won't even have to remove the second row.

### Power rear side windows

Fresh air for all. Quest's rear passengers now have a power window.

### Power rear liftgate

This available feature is the next best thing to your own doorman. Just push a button on your keyless entry, the liftgate or on the dash.



### One-touch sliding door

Hands full? No problem. Quest's available one-touch power sliding doors open easily.

### Low step-in height

It's easy for anyone to get in a Quest.

Conversation mirror  
Don't miss a thing with this available feature. See who's behaving, or not, in the rows behind.

## BIG LIFE. NEVER SIMPLER.

Go ahead and embrace the chaos. Quest makes it seem effortless, even fun. From an easier way to get inside to a better way to wave goodbye, you'll see innovative design at work for you – everywhere you look.



Nissan Intelligent Key® and Push Button Ignition – A system so smart, you can unlock the doors and start the engine, all without taking the key out of your pocket or purse.

Removable 2nd-row console – Your choice. Cup holders for the rear and a place to stash small items. Or remove this handy console to create some walk-around space.





<sup>1</sup>Factory-installed option. Never program while driving. GPS mapping may not be detailed in all areas or reflect current road regulations. <sup>2</sup>Driving is serious business and requires your full attention. Do not operate any devices connected to the USB or auxiliary audio input jack while driving. <sup>3</sup>Always give your full attention to driving. Avoid operating your iPod<sup>®</sup> in such a way that you can be distracted during vehicle operation. See dealer for details. iPod is a registered trademark of Apple, Inc. All rights reserved. iPod not included. <sup>4</sup>Availability of specific features is dependent upon the phone's Bluetooth<sup>®</sup> support. Please refer to your phone Owner's Manual for details. Cell phone not included. The Bluetooth word mark and logos are owned by Bluetooth SIG, Inc., and any use of such marks by Nissan is under licence.





## TECHNOLOGY CHANGES EVERYTHING.

Hungry? Lost? Bored back there? With high tech and instant entertainment, Quest has you covered. Let the road trip begin.

**DVD monitor** – Our best-in-class 279 mm (11") 16:9 viewing area available DVD monitor keeps them happy for hours and the nearby centre console even has inputs for gaming.

**Available Advanced Climate Control System** – First in its class. Control your inside climate and clean the air quickly, when you need to. Filter the cabin air or help reduce outside intrusion, and even help reduce bothersome allergens.

**Nissan Navigation System** – Quest's advanced navigation system gives you the tools to make every trip a snap. Try out a new restaurant or see some new sights. Relax, turn-by-turn voice guidance helps make sure you arrive on time.<sup>1</sup>

**iPod® connectivity** – Your music comes along. An available USB input is ideal for your iPod® or playing MP3s off a thumb drive, so you can easily control your playlist on the navigation display. On non-navigation-equipped Quests, you can plug your player into a standard auxiliary audio input.<sup>2,3</sup>

**Available Bluetooth® Hands-Free Phone System** – A safer way to stay in touch. Now you can make calls using the buttons on the steering wheel and listen via the speakers. You can also store your address books and use voice-activation to make calls by name.<sup>4</sup>

**Available 120-volt outlet** – Almost like your wall outlet at home. You can even plug in a laptop.



## YOU CAN HANDLE THIS.

You're in a Quest after all. Changing lanes – we've got your back. Manoeuvring in tight spaces – no problem. Powerful? Yes. Easy? Of course.

**Powerful V6** – Need to execute a quick lane change? Done. How about getting up to highway speed on the on-ramp? Piece of cake. Quest's powerful V6 gives you the confidence and the power to get around the way you need to.

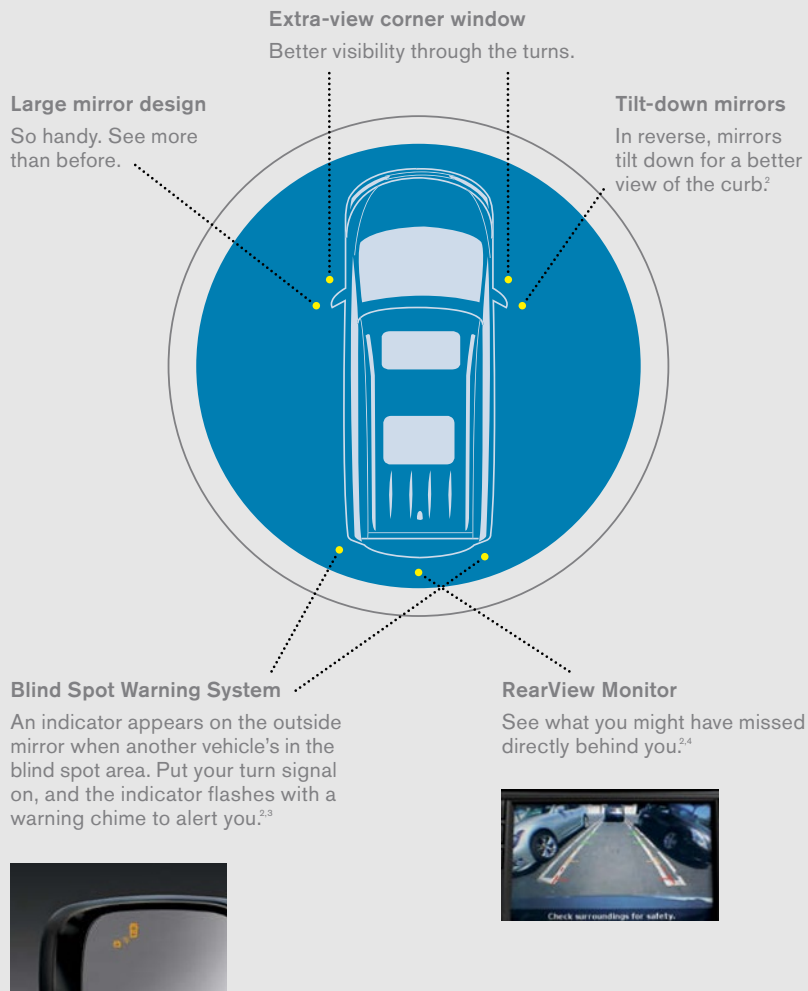
**CVT** – The smarter way to shift. Quest's virtually "gearless" and smooth Continuously Variable Transmission keeps you in the sweet spot. When accelerating, the CVT maintains engine rpm – instead of shifting – for a seamless wave of power.

**Speed-sensitive steering** – So responsive, it gives you the assist you need at different speeds. Steering is easier at low speeds (for parking), then firms up at higher cruising speeds.

**Easy Fill Tire Alert** – You're out of excuses for stopping for air when the tire monitor says you're low. Just fill until a friendly beep signals that you've reached the correct PSI. No more taking your chances with the sketchy gauge at the gas station!<sup>1</sup>



## IT'S CLEAR TO SEE HOW QUEST ASSISTS.



<sup>1</sup>Vehicle must be on for Easy Fill Tire Alert to operate. <sup>2</sup>See Specifications for availability. <sup>3</sup>The Blind Spot Warning System is not a substitute for proper lane change procedures. The system will not prevent contact with other vehicles or accidents due to careless or dangerous driving techniques or detect every vehicle or object around you. <sup>4</sup>Parking aid/convenience feature. Cannot completely eliminate blind spots or warn of moving objects. May not detect every object. Always check surroundings before moving vehicle. Not a substitute for proper backing procedures. Always turn to check what is behind you before backing up. <sup>5</sup>Airbags are only a supplemental restraint

## SAFETY ALL AROUND.

**It's protecting you and your most precious cargo that drives our comprehensive approach to safety.**

**Six standard airbags – The Nissan Advanced Airbag System** incorporates seat belt sensors and an occupant-classification sensor to inflate the dual-stage supplemental front airbags according to crash severity and seat belt usage. Quest also has front side-impact supplemental airbags built into each front seat so they move with you as you adjust your seat. And two roof-mounted curtain side-impact supplemental airbags help provide head protection for all rows of outboard occupants.<sup>5</sup>


**Front-seat Active Head Restraints** – These help reduce the chance of whiplash injuries to you and your front passenger by moving up and forward during certain rear-end collisions.

**Vehicle Dynamic Control/TCS** – Stay on course with Vehicle Dynamic Control (VDC) that senses understeer or oversteer and compensates accordingly.<sup>6</sup> Get a grip with Traction Control System (TCS). It senses drive-wheel spin and reduces engine power or applies front brakes to help maintain traction.

**Anti-lock Braking System** – ABS pumps the brakes faster than you could in panic-braking situations, to help prevent wheel lockup.

**Electronic Brake force Distribution (EBD)** – Monitors weight distribution and adjusts rear brake force for more balanced braking.

**Brake Assist** – Quick! In an emergency, Brake Assist helps boost braking by applying additional braking pressure.

**Snug Kids** – Nissan safety engineers have dedicated thousands of hours to evaluating hundreds of child restraints in Nissans. The result: An industry first, The Snug Kids Child Safety Seat Fit Guide. This guide lists child seats that fit the rear seats of Nissan vehicles, as well as  offers invaluable tips on correct installation. Look for the latest Fit Guide at [nissan.ca/owners/en](http://nissan.ca/owners/en).

**LATCH** – The Quest LATCH System (Lower Anchors and Tethers for CHildren) lets you easily secure LATCH-compatible child restraints in the second or third row without using a seat belt or a locking clip.



system; always wear your seat belt. Even with the occupant-classification sensor, rear-facing child restraints should not be placed in the front-passenger's seat. Also, in addition to any other requirement of applicable law, all children 12 and under should ride in the rear seat properly secured in child restraints, booster seats, or seat belts according to their size. Airbags will only inflate in certain accidents; see your Owner's Manual for more details. Inflated airbags shown for illustration purposes only. Actual airbags deflate after deployment. <sup>6</sup>VDC, which should remain on when driving except when freeing the vehicle from mud or snow, cannot prevent accidents due to abrupt steering, carelessness, or dangerous driving techniques. Always drive safely.

## Features & Specifications

Engine	S	SV	SL	LE
VQ35DE – 3.5-litre DOHC 24-valve V6 engine <sup>1</sup>				
Horsepower – 260 HP @ 6000 rpm				
Torque – 240 lb-ft @ 4400 rpm				
Emissions – Tier 2, Bin 5				
Continuously Variable Valve Timing Control System (CVTCS)				
Nissan Direct Ignition System with double-tipped iridium spark plugs				
Electronic drive-by-wire throttle				
Engine block heater				

Drivetrain	S	SV	SL	LE
Front engine/Front-Wheel Drive				
Xtronic CVT <sup>®</sup> (Continuously Variable Transmission)				

Wheel/Tires	S	SV	SL	LE
16" x 6.5" steel wheels with bolt-on wheel covers				
16" x 7" aluminum-alloy wheels				
18" x 7" aluminum-alloy wheels				
P225/65TR16 all-season tires				
P235/55TR18 all-season tires				

Brakes	S	SV	SL	LE
4-wheel vented disc brakes				
Anti-lock Braking System (ABS)				
Electronic Brake force Distribution (EBD)				
Brake Assist				

Suspension/Steering	S	SV	SL	LE
Front: Independent strut suspension				
Rear: Multi-link independent suspension				
Front stabilizer bar				
Vehicle-speed-sensitive electric power-assisted rack-and-pinion steering				

Exterior	S	SV	SL	LE
Automatic on/off headlights				
High Intensity Discharge (HID) xenon headlights				
Fog lights				
Daytime Running Lights				
Automatic tilt-in-reverse outside mirrors				
Dual sliding rear doors				
One-touch power sliding doors				
One-touch power liftgate				
Roof rack side rails				
Roof rack crossbars	AC	AC	AC	AC
Dual opening glass moonroof with sliding sunshade			MB	M
Power outside mirrors				
Power outside mirrors with turn signal indicators				
Heated outside mirrors				
Front UV-reducing solar glass and rear privacy glass				
Chrome door handles				
Side sill spoilers with chrome accents				

Entertainment	S	SV	SL	LE
AM/FM/in-dash 6-CD audio system				
4 Speakers				
Premium AM/FM/CD audio system with 109 mm (4.3") colour display 6 Speakers				

Entertainment (continued)	S	SV	SL	LE
Digital Bose <sup>®</sup> audio system with AM/FM/CD and 13 speakers			MB	
13 Speakers			MB	
XM <sup>®</sup> Satellite Radio <sup>2</sup>			MB	
9.3 GB Music Box <sup>®</sup> hard drive for digital music storage and playback				
DVD Entertainment System with 178 mm (7.0") colour in-dash monitor – 203 mm (8.0") on LE			D	
Second-row 279 mm (11.0") WVGA DVD monitor with auto-dimming function			D	
Dual Media Playback capability			D	
Two wireless headsets and remote control			D	
Auxiliary audio/video input jacks			D	
MP3/WMA CD playback capability				
Radio Data System (RDS)				
Speed-sensitive volume control				
Auxiliary audio input jack				
USB connection port for iPod <sup>®</sup> interface and other compatible devices				
Illuminated steering-wheel-mounted audio controls				

Interior	S	SV	SL	LE
Blind Spot Warning System				
RearView Monitor				
Nissan Hard Drive Navigation System with 203 mm (8.0") colour touch-screen monitor and voice recognition				
Bluetooth <sup>®</sup> Hands-Free Phone System				
HomeLink <sup>®</sup> Universal Transceiver				
Auto-dimming inside rearview mirror (SL with digital compass)				
Air conditioning				
Tri-zone Automatic Climate Control (ACC)				
Advanced Climate Control System				
In-cabin charcoal microfilter				
Polyphenol microfilter				
Second- and third-row air conditioning/heater vents with second-row controls				
Nissan Intelligent Key <sup>®</sup> with Push Button Ignition				
Nissan Intelligent Key <sup>®</sup> with remote front windows down				
Power door locks with auto-locking feature				
Power front windows with front one-touch up/down				
Power second-row side windows				
Second- and third-row sunshades				
Tilt and telescoping steering column				
Cruise control with illuminated steering-wheel-mounted switches				
Variable intermittent speed-sensitive windshield wipers and rear wiper				
Dual front map lights, dual second- and dual third-row reading lights				
Dual illuminated visor vanity mirrors with extenders				
Conversation mirror				
First- and second-row height-adjustable seat belts				
Two 12-volt DC power outlets				
120-volt AC power outlet				
Retained accessory power and battery saver				
First-row centre console with cup holders				
Removable second-row centre console				
Front seatback grocery bag hooks				
Passenger seatback pocket				
Driver's seatback pocket				
Permanent rear under-floor storage well				

Seating/Appointments	S	SV	SL	LE
6-way manual driver's seat with centre armrest	■	■		
8-way power driver's seat with centre armrest			■	■
4-way power front-passenger's seat				■
Driver's seat power adjustable lumbar support		■	■	■
Driver's memory seat system (two presets, remote-activated)				■
Quick Comfort heated front seats		■	■	
Second-row captain's chairs (sliding and reclining) with third-row easy-entry feature	■	■	■	■
Fold-flat second-row captain's chairs	■	■	■	
60/40 Split fold-flat third-row bench seat	■	■	■	
Quick-release third-row folding seatbacks	■	■	■	
Power-return third-row seat				■
Cloth seat trim	■	■		
Leather-appointed seating			■	■
Leather-wrapped steering wheel			■	■
Leather-wrapped shift knob			■	■
Wood-tone trim	■	■	■	■

### Safety/Security

Safety/Security	S	SV	SL	LE
Nissan Advanced Airbag System with dual-stage supplemental front airbags, seat belt sensors and occupant-classification sensor	■	■	■	■
Driver and front-passenger seat-mounted side-impact supplemental airbags	■	■	■	■
Roof-mounted curtain side-impact supplemental airbags for first-, second- and third-row outboard occupant head protection	■	■	■	■
3-point ALR/ELR passenger seat belt system (ELR for driver)	■	■	■	■
Front seat belts with pre-tensioners and load limiters	■	■	■	■
Front-seat Active Head Restraints and height-adjustable head restraints for all positions	■	■	■	■
LATCH System (Lower Anchors and Tethers for CHildren)	■	■	■	■
Child-safety sliding rear door locks	■	■	■	■
Zone Body construction with front and rear crumple zones and hood-buckling creases	■	■	■	■
Energy-absorbing steering column	■	■	■	■
High-strength steel side-door guard beams	■	■	■	■
Traction Control System (TCS)	■	■	■	■
Vehicle Dynamic Control (VDC)	■	■	■	■
Tire Pressure Monitoring System (TPMS) with Easy Fill Tire Alert	■	■	■	■
Nissan Vehicle Immobilizer System	■	■	■	■
Vehicle Security System	■	■	■	■

## Packages

### **D** DVD Entertainment System Package (SL)

DVD Entertainment System with 178 mm (7.0") colour in-dash monitor • Second-row 279 mm (11.0") WVGA DVD monitor with auto-dimming function • Auxiliary audio/video input jacks • Dual Media Playback capability • Two wireless headsets and remote control

- 120-volt AC power outlet

This package replaces standard auxiliary audio input jack.

### **M** Dual Opening Glass Moonroof Package (LE)

Dual opening glass moonroof with sliding sunshade

### **MB** Dual Moonroof and Bose® Audio System Package (SL)

Dual opening glass moonroof with sliding sunshade • Digital Bose® audio system with AM/FM/CD and 13 speakers • XM® Satellite Radio<sup>2</sup>

This package requires the DVD Entertainment System Package.

## Dimensions/Capacities

### Exterior Dimensions – mm (inches)

Wheelbase	3000 (118.1)
Overall length	5100 (200.8)
Overall width	1970 (77.6)
Overall height	1855 (73.0) with roof rack
Track width (front/rear)	
16" Wheels	1730/1730 (68.1/68.1)
18" Wheels	1720/1720 (67.7/67.7)
Step-in height	
16" Wheels	399 (15.7)
18" Wheels	409 (16.1)

### Interior Dimensions – mm (inches)

#### Front/second row/third row

Head room	
Without moonroof	1069/1056/1015 (42.1/41.6/40.0)
With moonroof	1038/1013/965 (40.9/39.9/38.0)
Leg room	1113/932/1029 (43.8/36.7/40.5)
Hip room	1456/1677/1259 (57.3/66.0/49.6)
Shoulder room	1638/1605/1554 (64.5/63.2/61.2)

### Capacities

Interior passenger volume – L (cu. ft.)	5035 (177.8) without moonroof
Interior passenger volume – L (cu. ft.)	4839 (170.9) with moonroof
Interior volume index – L (cu. ft.)	6082 (214.8) without moonroof
Cargo volume – L (cu. ft.)	
Rear under-floor storage well (S, SV, SL)	323 (11.4)
Rear under-floor storage well with Bose® audio system (SL, LE)	190 (6.7)
Second row upright, third row folded flat	1801 (63.6)
Second row folded, third row folded flat	3070 (108.4)
Fuel tank – L (Imp gal)	75.6 (16.6)

### Base Curb Weights – kg (lbs)

	S	SV	SL	LE
Xtronic CVT*	1987 (4381)	1997 (4403)	2032 (4480)	2063 (4548)

### 2011 Fuel Consumption Estimates – L/100 km (mpg)

City/Hwy	S	SV	SL	LE
Xtronic CVT*	11.1 (25)/8.1 (35)	11.1 (25)/8.1 (35)	11.1 (25)/8.1 (35)	11.1 (25)/8.1 (35)

\*Actual mileage may vary with driving conditions – use for comparison only.

■ Standard

AC Accessory

D Part of DVD Entertainment System Package

MB Part of Dual Moonroof and Bose® Audio System Package

M Part of Dual Opening Glass Moonroof Package

<sup>1</sup> Use regular unleaded fuel with 87 octane. For maximum power, use premium fuel.

<sup>2</sup> XM® Satellite Radio is available in the 10 Canadian provinces and the 48 contiguous United States. Basic monthly subscription required and sold separately after trial period. Subscription subject to terms and conditions at xmradio.ca. All fees and programming subject to change. © 2010 XM Satellite Radio Inc. The XM name and related logos are registered trademarks of XM Satellite Radio Inc. All other trademarks are the property of their respective owners.

<sup>3</sup> One-touch auto-up/down on driver's side only.

®Bose is a registered trademark of The Bose Corporation

®The Bluetooth word mark and logos are owned by Bluetooth SIG, Inc., and any use of such marks by Nissan is under licence.

®HomeLink is a registered trademark of Johnson Controls Technology Company.

## THERE'S A QUEST® FOR YOU

### S

- 3.5-litre V6 engine with Xtronic CVT® (Continuously Variable Transmission)
- Anti-lock Braking System (ABS)
- Vehicle Dynamic Control (VDC) and Traction Control System (TCS)
- Tire Pressure Monitoring System (TPMS) with Easy Fill Tire Alert
- Roof rack side rails
- Nissan Intelligent Key® with Push Button Ignition
- AM/FM/in-dash 6-CD audio system
- Power second-row side windows
- 7-passenger seating capacity and permanent rear under-floor storage well
- Fold-flat second-row captain's chairs and fold-flat third-row bench seat
- Nissan Advanced Airbag System and 6 standard airbags

### SV

Includes S equipment, plus:

- 16" Aluminum-alloy wheels and fog lights
- One-touch power sliding doors
- Conversation mirror
- Tri-zone Automatic Climate Control
- Driver's seat power adjustable lumbar support
- Quick Comfort heated front seats

### SL

Includes SV equipment, plus:

- 18" Aluminum-alloy wheels and side sill spoilers
- One-touch power liftgate
- RearView Monitor
- Bluetooth® Hands-Free Phone System
- Premium AM/FM/CD audio system with 109 mm (4.3") colour display
- USB connection port for iPod® interface and other compatible devices
- Leather-wrapped steering wheel with illuminated audio controls
- Leather-appointed seats and leather shift knob
- 8-way power driver's seat with power lumbar support

### LE

Includes SL equipment, plus:

- High Intensity Discharge (HID) xenon headlights
- Blind Spot Warning System and automatic tilt-in-reverse outside mirrors
- Nissan Hard Drive Navigation System with 203 mm (8.0") colour touch-screen monitor and voice recognition
- DVD Entertainment System with second-row 279 mm (11.0") DVD monitor
- Bose® audio system with XM® Satellite Radio
- Advanced Climate Control System with polyphenol microfilter
- Driver's memory seat system and 4-way power front-passenger's seat
- Power-return third-row seat

## PAINT AND FABRIC SELECTIONS



Hakone White <sup>1</sup> QAB	S	SV	SL	LE
Grey Cloth	■	■		
Grey Leather			■	■
Café Latte Leather			■	■



Phantom Black GAE	S	SV	SL	LE
Grey Leather			■	■
Café Latte Leather			■	■



Cool Water FAA	S	SV	SL	LE
Grey Leather			■	■
Café Latte Cloth	■	■		
Café Latte Leather			■	■

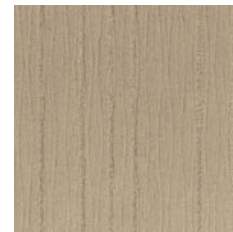


Spiced Currant LAE	S	SV	SL	LE
Grey Leather			■	■
Café Latte Leather			■	■

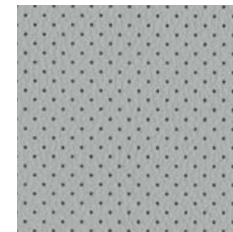
Grey Cloth



Café Latte Cloth



Grey Leather



Café Latte Leather



Airstream K23	S	SV	SL	LE
Grey Cloth	■	■		
Grey Leather			■	■



Titanium Beige KAY	S	SV	SL	LE
Café Latte Cloth	■	■		
Café Latte Leather			■	■



Carbon Silver K51	S	SV	SL	LE
Grey Cloth	■	■		
Grey Leather			■	■

Please see the actual colours at your local Nissan dealer.

■ Standard

<sup>1</sup>Extra cost option

## GENUINE NISSAN ACCESSORIES

Every Genuine Nissan Accessory is custom-fit, custom-designed and durability-tested. Each one is backed by Nissan's 3 year/60,000 km Accessories limited warranty.<sup>2</sup> Plus, they're just a few dollars a month when financed with vehicle purchase. See your Nissan dealer for more information on Quest accessories or log on to [accessories.nissan.ca](http://accessories.nissan.ca)



Cargo Organizer



Cargo Area Protector



Illuminated Kick Plates



Rear Bumper Protector



Roof Rack Crossbars

## COMMITMENT

**From the moment you first think about a Nissan to the time you actually drive off the lot and long beyond, we want every experience to be special. Passionate. Exhilarating. Like the vehicles we design and build. After all, what's excitement without commitment?**

**Continue your excitement at [nissan.ca](http://nissan.ca)** You'll find virtual product demonstrations, a way to "build your own Nissan," a dealer locator, and more information about key Nissan support and services.



Choose your model

Select colours

Request a quote

**Finance Options** Through Nissan Canada Finance, we offer many attractive purchase and lease programs, all with competitive rates and terms. With our flexible finance options, driving home a new Nissan has never been easier. Consult your local Nissan Dealership for complete details.

**No-Nonsense Warranty** Every 2011 Nissan is covered by a 3 year/60,000 km<sup>3</sup> Comprehensive New Vehicle Warranty, a 5 year/100,000 km<sup>3</sup> Powertrain Warranty, an 8 year/130,000 km<sup>3</sup> Emission Control Warranty on selected components, and a 5 year/unlimited km Corrosion Perforation Warranty. As a Nissan owner, you'll also receive a 3 year Roadside Assistance program available to you 24 hours a day.

**Added Security Plan (ASP)** For ultimate peace of mind, consider the Nissan Added Security Plan. It's our commitment to be there for you, and to help you leave your worries behind. Different plans, available for both purchased and leased vehicles, let you tailor the coverage to your driving habits.

Nissan's philosophy toward the environment, "Seeking a symbiosis of people, vehicles and nature," describes our ideal for a sustainable mobile society, now and in the future. We launched the Nissan Green Program with specific objectives to realize this goal, and we are pursuing it energetically.



<sup>2</sup>See your Nissan Dealership and read the actual limited warranty. <sup>3</sup>Whichever comes first. <sup>4</sup>The Bluetooth word mark and logos are owned by Bluetooth SIG, Inc., and any use of such marks by Nissan is under licence. <sup>5</sup>Bose is a registered trademark of The Bose Corporation. <sup>6</sup>iPod is a registered trademark of Apple, Inc. All rights reserved. iPod not included. <sup>7</sup>XM and all related marks and logos are trademarks of XM Radio Inc. and its subsidiaries.



## 10 REASONS TO MAKE A QUEST® YOUR OWN.

A wraparound rear window for extra-sleek styling

Available one-touch power sliding doors help you out when your hands are full

Goes from carpool to cargo easier than any other minivan

Permanent rear under-floor storage, thanks to a unique, no-stow third row

Second row seats you never have to remove

Nissan Navigation System with turn-by-turn voice guidance<sup>1</sup>

Easier lane changes, with a heads up from the available Blind Spot Warning System<sup>2</sup>

Big-screen fun with an available best-in-class 279 mm (11" ) 16:9 DVD monitor

The Nissan Advanced Airbag System, with six standard airbags<sup>3</sup>

An Easy Fill Tire Alert that beeps the horn when you've reached the right pressure<sup>4</sup>

visit [www.nissan.ca](http://www.nissan.ca)

<sup>1</sup>Factory-installed option. Never program while driving. GPS mapping may not be detailed in all areas or reflect current road regulations. See Specifications section for availability. <sup>2</sup>The Blind Spot Warning System is not a substitute for proper lane change procedures. The system will not prevent contact with other vehicles or accidents due to careless or dangerous driving techniques or detect every vehicle or object around you. <sup>3</sup>Airbags are only a supplemental restraint system; always wear your seat belt. Even with the occupant-classification sensor, rear-facing child restraints should not be placed in the front-passenger's seat. Also, in addition to any other requirement of applicable law, all children 12 and under should ride in the rear seat properly secured in child restraints, booster seats, or seat belts according to their size. Airbags will only inflate in certain accidents. See your Owner's Manual for more details. <sup>4</sup>Vehicle must be on for Easy Fill Tire Alert to operate.

All illustrations, photographs and specifications in this brochure are based on the latest product information. See actual vehicle for complete accuracy. Nissan Canada Inc. reserves the right to make changes at any time, without notice, in prices, colours, materials, equipment, specifications and models, and to discontinue models or equipment. For information on additional options and accessories, contact your Nissan Dealership. Registered trademarks are property of their respective owners. At [www.nissan.ca](http://www.nissan.ca), you'll find virtual product demonstrations, a way to "build your own Nissan," a dealer locator, and more information about key Nissan support services. The Nissan names, logos, product names, feature names, and slogans are trademarks owned by or licenced to Nissan Motor Co. Ltd. and/or its North American subsidiaries. **Always wear your seat belt, and please don't drink and drive.** Printed in January 2011. Catalogue number: 99999-QST11EN. © 2011 Nissan Canada Inc. All rights reserved.



SHIFT    the way you move