

Supporting Arizona's mining industry . . .



ASSOCIATED EQUIPMENT DISTRIBUTORS OF ARIZONA

Action Rentals

7315 N. 67th Ave.
Glendale, AZ 85301

All Quip of Arizona

3750 Grand Ave.
Phoenix, AZ 85019

Apache Rentals

1717 E. Curry
Tempe, AZ 85281

Arizona Industrial Machinery

2649 N. 29th Ave.
Phoenix, AZ 85009

AZ Mite E Lift

3831 E. Broadway
Phoenix, AZ 85040

Associates Commercial Corp.

P.O. Box 2340
Newport Beach, CA 92658

Border Machinery Company

2990 N. Arizona Ave.
Chandler, AZ 85224

Cactus Equipment Corp.

3840 So. 32nd St.
Phoenix, AZ 85040

Case Power Equipment

1411 N. 27th Ave.
Phoenix, AZ 85009

Century Machinery Company

3600 So. 7th Ave.
Phoenix, AZ 85040

C I T Corp.

3800 N. Central, Ste. 717
Phoenix, AZ 85012

Copper State Equipment, Inc.

2323 W. University
Tempe, AZ 85281

Crist Machinery Company

2020 N. Black Canyon Hwy.
Phoenix, AZ 85005

Cummins Southwest Diesel, Inc.

2239 N. Black Canyon
Phoenix, AZ 85005

D-W Equipment

4028 S. 36th St.
Phoenix, AZ 85040

Earhart Ford Tractor, Inc.

4224 W. Clarendon
Phoenix, AZ 85019

Empire Machinery Co.

1725 So. Country Club Drive
Mesa, AZ 85202

First Interstate Credit & Leasing

4415 E. Kathleen
Phoenix, AZ 85032-4248

Ingersoll-Rand Equipment Sales

820 N. 17th Ave.
Phoenix, AZ 85007

Jaquays Equipment Company

1219 So. 19th Ave.
Phoenix, AZ 85009

Lake Shore Equipment, Inc.

1646 E. University
Phoenix, AZ 85034

Mardian Equipment Company

2430 So. 35th Ave.
Phoenix, AZ 85009

Neils Detroit Diesel

2602 So. 19th Ave.
Phoenix, AZ 85009

Reuter Equipment Company

3816 W. Lower Buckeye Rd.
Phoenix, AZ 85009

Road Machinery Company

716 So. 7th St.
Phoenix, AZ 85034

Rock 'N Road Equipment

3789 Grand Ave.
Phoenix, AZ 85019

Southwest Rental Corp.

1025 So. 48th St.
Tempe, AZ 85281

Sunstate Equipment

5425 E. Washington
Phoenix, AZ 85034

Tolby Equipment Company

7909 W. Glendale Ave.
Glendale, AZ 85303

Touche Ross & Company

4041 N. Central, #1600
Phoenix, AZ 85012

Valley Equipment & Supply

19 E. Broadway
Mesa, AZ 85202

Western Machinery Company

1415 W. Baseline Rd.
Tempe, AZ 85283

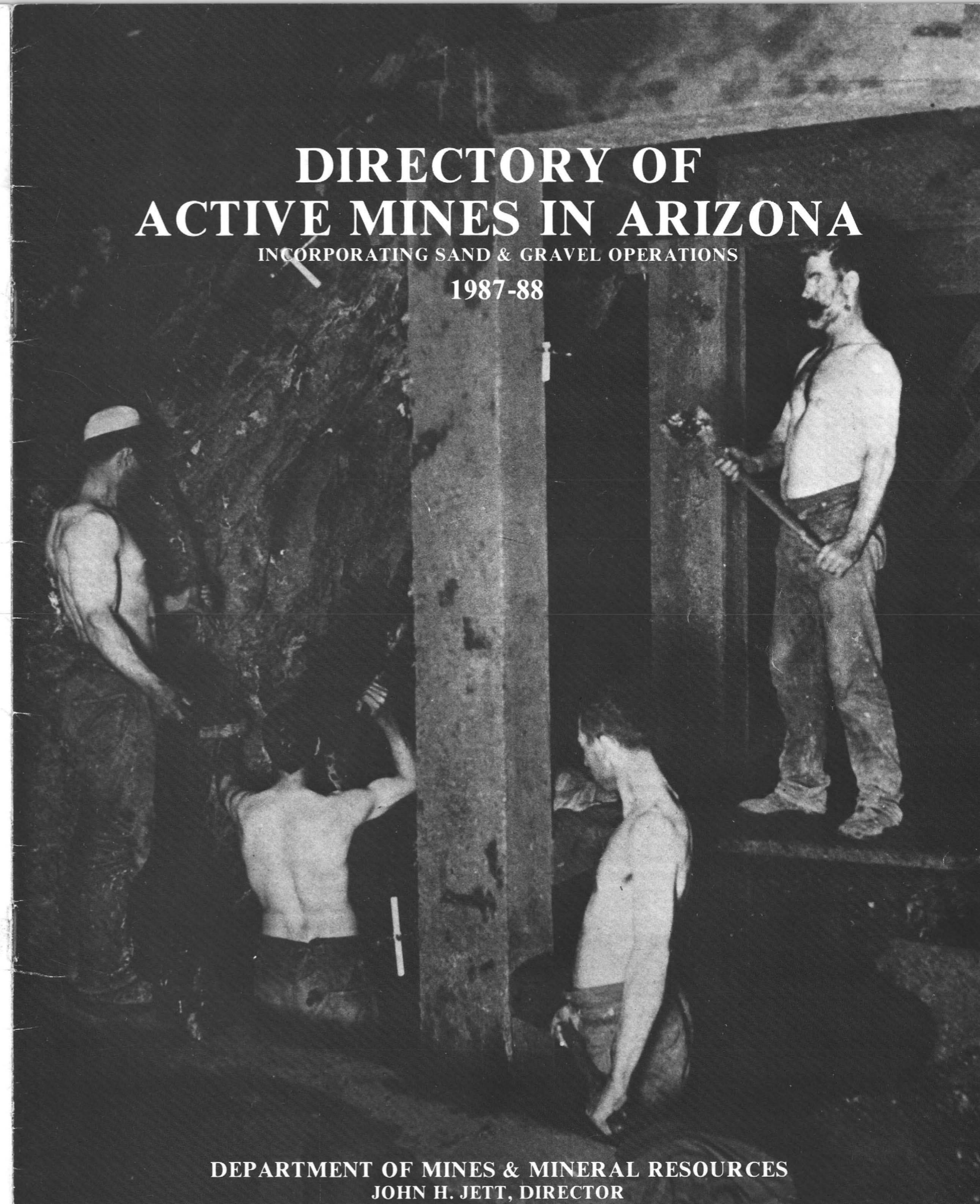
Williams Southwest

1220 W. Geneva St.
Tempe, AZ 85282

DIRECTORY OF ACTIVE MINES IN ARIZONA

INCORPORATING SAND & GRAVEL OPERATIONS

1987-88



AN ASSOCIATION OF ARIZONA'S LEADING CONSTRUCTION EQUIPMENT DISTRIBUTORS

300 West Clarendon, #350 • Phoenix, Arizona • 230-0590

DEPARTMENT OF MINES & MINERAL RESOURCES
JOHN H. JETT, DIRECTOR

GOOD FRIENDS FOR YOUR COMPANY, OR MINE

A & R METALS
A-1 Wiping Materials
Able Steel Fabricators, Inc.
Adams Machinery
AIM-SAFE
Aldrich Industrial Control
Allied Industrial Dist.
Almas International
AMERON PIPE DIVISION
APACHE POWDER CO.
ARGO INDUSTRIAL
Arizona Bank
Arizona Lift Trucks
ARIZONA PORTLAND CEMENT CO.
Arizona Rubber Co.
Arizona Wire Rope & Rigging
ARMCO GRINDING SYSTEMS
Ashton Co.
Astro-Lite Battery
Automotive Sales Co.
Az Building Systems
B & K FLEET SUPPLY
B.J. CECL TRUCKING
Ball, Ball, and Brosamer
Bearing Belt & Chain
Betz Industrial
Bilby and Shoenhair
Bonita Steel Builders
Border Steel Mills
Boyle Engineering Corp.
BRIDGESTONE USA
Brown & Root
BRUCE GREER CONSTRUCTION
Bucyrus-Erie
CALMAT OF ARIZONA
Canyon State Oil
CAPITAL CASTINGS, INC.
Chemstar
Chevron USA
Christensen & Associates
Cimetta Engineering & Construction
COBRE TIRE COMPANY
Copper State Bolt & Nut
Copperstate Metals
Crusher Service Co.
CTI
CUMMINS SOUTHWEST
Cupps Industrial Supply
Dames and Moore
Dealer's Tire Supply
Donaldson Co.
DRESSER - WABCO
Dresser Industries
Eastern Electric
Ed Holderness Supplies
El Paso Natural Gas Co.
El Paso Pipe and Supply
EMPIRE MACHINERY CO.
Engineered Sales
Equipment Maintenance Service
ESCO Corp.
EVANS, KITCHEL & JENCKES
FENNEMORE, CRAIG, VON AMMON
FILTER PRODUCTS CO.
FIRST INTERSTATE BANK
Frog, Switch & Manufacturing Co.
G.N.K. Kwikform
Gilbert Pump of Tucson
Globechem
Goodyear Tire and Rubber

AMIGOS — SUPPORT FOR BUSINESS

Friends of mining and industry interests, working together for a healthy business climate in our state and nation. An influential Political Action Committee supporting pro-business candidates and issues. Fresh, insightful newsletters and publications. Business and social meetings with mining and industry leaders. Employee programs with big benefits to the small company.

This is AMIGOS, suppliers to the mines and industry. Good friends for your company, or mine.

Granberry Supply Corp.
GRANITE CONSTRUCTION COMPANY
Grohall Inc.
H & L TOOTH CO.
Haltec Corp
HARNISCHFECGER CORP.
Heflin Steel
HEFLIN-HARRINGTON INC.
Henkel Corporation
High Strength Steel West
I-10 International Trucks
Independent Mining Consultants
Industrial Mining Supply
INDUSTRIAL MOTOR & CONTROL
Industrial Parts Depot
Industrial Tool & Supply
INGERSOLL-RAND EQUIPMENT
J.R. Kennedy Co., Inc.
Jenney Freight Line, Inc.
John Carollo Engineers
Kactus Supply
Kaman Bearing
Karlsan Machine Works
KELLER EQUIPMENT CO.
Kemp Rubber Co.
KERLEY CHEMICAL COMPANY
KIEWIT WESTERN
KING BEARING
KNIGHT FOUNDRY
L & M Radiator
LARRY CHRISTENSEN & ASSOCIATES
Lewis & Roca
Liggett Industries Inc.
Lincoln
Liquid Air Corporation
M-3 Engineering & Tech
M.C. LaBarr
Mallin Iron & Metal Company
Mar-Bro
Marco Equipment Co.
Martensen Enterprises
Maskell-Robbins Inc.
Mel Clack Tire Service
Merle's Automotive & Industrial
Merrill Lynch
MICHELIN TIRE CORPORATION
Mining & Construction Supplies
Mission Uniform Service

Modular Mining Systems
Molecular Concepts
Motor Rim and Wheel Service
Mountain Bell
MOUNTAIN STATES MINERAL ENT.
NATIONAL METALS CO.
NAUMANN MATERIAL HANDLING
NEILS DETROIT DIESEL
Nucor Grinding Balls
Park Corp-Mine Equipment
PAYDIRT MAGAZINE
PEABODY COAL CO.
Phoenix Fuel Company
Phoenix Generator Exchange
Pioneer Distributing Company
Pioneer Equipment
Precast Manufacturing
Price Waterhouse & Co.
Process Equipment
Proler International
R.J. Ruff & Company
REDBURN TIRE CO.
Rimex Supply Ltd.
ROAD MACHINERY CO.
Saguaro Conveyor Equipment
Saguaro Machinery Co.
Sii Smith Gruner
Smith Pipe & Steel
SOUTHWEST CONTRACTOR MAGAZINE
SOUTHWEST ENERGY, INC.
Spaulding Equipment Co.
Sunbelt Battery
Sunbelt Marketing Inc.
SUNDT CORPORATION-INDUS. DIV.
Sundt Products
T.A. Caid & Sons, Inc.
Tanner Companies
Ted Levine Drum Co.
Thunderbird Fire & Safety
Tire Mileage
Todd Uniform Company
Tractor Parts & Service
Tucson Blueprint
U.S. Electrical Motors
Union 76 Distributing of Tucson
UNION ROCK & MATERIAL
UNOCAL 76
VALLEY NATIONAL BANK
Valley National Insurance
Van Waters & Rogers
Vroom Engineering & Manufacturing
W.R. RYAN CO.
W.W. Williams Southwest
WATERTON INDUSTRIAL PRODUCTS
Wells Oil Company
WESTERN MACHINERY COMPANY
WESTERN STATES TIRES
Western Truck Equipment
WESTINGHOUSE ELECTRIC
Willing Pump and Supply
WISCO SUPPLY
Wood Brothers & Halstead
Xtek/Goldman



Arizona's Mining & Industry

Get Our Support

The suppliers to the mines and industry

P.O. Box 25191
Phoenix, Arizona 85002 (602) 279-3199

NORTHERN MATERIALS CORP. — 5200 E. Railroad, P.O. Box 1116, Flagstaff, AZ 86002, 526-0665

REPUBLIC CONCRETE — 2150 E. Huntington Dr., Flagstaff, AZ 86001, 779-4151

***THE TANNER COMPANIES** — 5400 E. Empire Ave., Flagstaff, AZ 86001, 526-5250

FOUNTAIN HILLS

FOUNTAIN HILLS REDE E MIX, INC. — Grand Blvd. & E. Pueblo Blvd., Fountain Hills, AZ 85268, 837-1555

GILA BEND

GILA READY MIX — P.O. Box 740, Stout Road, Gila Bend, AZ 85337, 683-2251

GLOBE

GUZMAN CONSTRUCTION — P.O. Box 7, Superior-Globe, Globe, AZ 85501, 425-5775

GOLDEN VALEY (Shores)

MOHAVE CONCRETE — Oatman Rd., Golden Shores, Golden Valley, AZ 86440, 768-7161

HEBER

GIBSON ENTERPRISES — Heber, AZ 85928, 535-4509

HOLBROOK

BLACKROCK CONSTRUCTION — Perkins Valley, Holbrook, AZ 86025, 524-6159

NAVAJO CONCRETE REDI-MIX CO. — Hwy. 77 S., Holbrook, AZ 86025, 524-3794

HUACHUCA CITY

HUACHUCA MATERIALS & CONCRETE INC. — Mustang Road, Huachuca City, AZ 85616, 456-1600

HUMBOLDT

BRADSHAW MOUNTAIN READY MIX — Hwy. 69, Humboldt, AZ 86329, 632-7936

KEARNY

SAGUARO CONCRETE CO. — P.O. Box 156, Industrial Road, Kearny, AZ 85237, 363-7256

KINGMAN

DESERT CONSTRUCTION INC. — 4490 N. Hwy. 66, Kingman, AZ 86401, 757-2213

KINGMAN REDI-MIX — Airport, Kingman, AZ 86401, 757-7446

W.M.K. TRANSIT MIX CO. — P.O. Box 208, Kingman, AZ 86401, W. Hwy. 66, 753-5266

LAKE HAVASU CITY

CAMPBELL REDI-MIX — 1510 Copper Drive, Lake Havasu City, AZ 86403, 855-6535

EARTH PRODUCTS UNLIMITED — 1685 Kiowa Blvd., Lake Havasu City, AZ 86403, 855-5520

MOHAVE CONCRETE & MATERIALS INC. — Hwy. 95 North, Lake Havasu City, AZ 86403, 764-2226

MAMMOTH

FRED CLARK TRUCKING CO., INC. — P.O. Box 116, Mammoth, AZ 85618, 520 Main, 487-2232

NOGALES

MULTI-METALS INC. — Mariposa Ranch, Nogales, AZ 85621, 287-3939

WILLIAMS J.D. — 602 W. Mariposa, Nogales, AZ 85621, 281-9449

PAGE

GENERAL ROCK & SAND — P.O. Box 237, Industrial Park, Page, AZ 86040, 645-3289

KOCJAN ENTERPRISES, INC. — P.O. Box 478, Industrial Park, Page, AZ 86040, 1129 Ave., 645-2297

PAULDEN

PAULDEN SAND & ROCK REDI-MIX — Div. Dunbar Stone Co., Inc., P.O. Box 403, Paulden, AZ 86334, 636-2500

PAYSON

PARKER CONCRETE & EXCAVATION — Oxbow Estates, Payson, AZ 85541, 474-4294

PAYSON CONCRETE & MATERIALS, INC. — P.O. Box 448, Aero Drive & McLane, Payson, AZ 85541, 474-2231

STAR VALLEY GRANITE & MATERIALS — Star Valley, Payson, AZ 85541, 474-9396

PRESCOTT

EZ TRANSMIX COMPANY — N 6, Prescott, AZ 86301, 445-3571

MARKLEY ENTERPRISES, INC. — 419 N. Washington Ave., Prescott, AZ 86301, 445-6600

YAVAPAI MATERIALS, INC. — P.O. Box 814, Near Airport - Hwy. 89, Prescott, AZ 86301, 445-7305

QUEEN CREEK

EAST VALLEY MATERIALS — Queen Creek Rd., Queen Creek, AZ 85242, 987-3777

RIVIERA

THOMPSON REDI-MIX — 1595 Hwy 95, Riviera, AZ 86442, 758-2065

SAFFORD

BLACKJACK CONSTRUCTION & SUPPLY — 2671 S. 1st Ave., Safford, AZ 85546, 428-1237

C K C MATERIALS DIVISION — 1502 N. 9th Ave., Airport Road, Safford, AZ 85546, 428-3423

W.A. MORRIS SAND & GRAVEL & CON., INC. — Bowie Hwy., Safford, AZ 85546, 428-1371

ST. JOHNS

FRANCIS DAY & SONS — P.O. Box 157, St. Johns, AZ 85936, 337-2121

SEDONA

OAK CREEK BUILDERS SUPPLY — Contractors Rd., Sedona, AZ 86336, 282-4802

***THE TANNER COMPANIES (U.M. DIV.)** — W. Hwy. 89-A, Sedona, AZ 86336, 282-4200

SHOW LOW

A&A READY MIX, INC. — E. Deuce of Clubs, Show Low, AZ 85901, 537-5757

H&S CONSTRUCTION — Pineview Summer Homes, Show Low, AZ 85901, 537-2719

JOY T. PEARCE CONSTRUCTION INC. — Show Low, AZ 85901, 537-3794

SHOW LOW READY MIX — Drawer 179, 507 S. White Mtn. Rd., Show Low, AZ 85901, 537-5716

SIERRA VISTA

BUENA VISTA LANDSCAPING & MATERIALS — 217 N. Canyon Dr., Sierra Vista, AZ 85635, 458-7147

CASHWAY CONCRETE & MATERIALS — Hwy. 92, Sierra Vista, AZ 85635, 458-1973

DESERT CONCRETE CO. — Hwy. 92, Sierra Vista, AZ 85635, 378-6072

DRESZEN GRAVEL CO. — Hwy. 92, Sierra Vista, AZ, 85635, 378-9443

SIERRA READY MIX & CONTRACTING CO. — P.O. Box 1506, North Ave., Sierra Vista, AZ 85635, 458-4343

SNOWFLAKE

BRIMHALL SAND & ROCK & BLDG. MATERIAL — P.O. Box 750, North Snowflake, AZ 85937, 536-4226

SPRINGERVILLE

HALE RUE PIPELINE SERVICE — 611 S. Voight Street, Springerville, AZ 85938, 333-4483

TAYLOR

HATCH CONSTRUCTION & PAVING — Hwy. 77, Taylor, AZ 85939, 536-7213

REIDHEAD SAND & ROCK, INC. — P.O. Box 7 Paper Mill Rd., Taylor, AZ 85939, 536-4519

TUBA CITY

MITCHELL'S SAND & GRAVEL — Tuba City, AZ 86045, 283-4103

SWC TRANSIT MIX, INC. — Tuba City, AZ 86045, 283-6878

VERNON

NORTHERN ARIZONA PRE-CAST — Vernon, AZ 85940, 537-4666

WICKENBURG

RED-E-MIX CONCRETE CO. — 286 1/2 N. Frontier, Box 12, Wickenburg, AZ 85358, 684-7248

WICKENBURG CONCRETE & MATERIALS — Wick-enburg Municipal Airport, Phoenix Hwy., Wickenburg, AZ 85358, 684-3335, 684-3402

WILLCOX

WILLCOX ROCK & SAND — 770 S. Cochise Ave., P.O. Box 156, Willcox, AZ 85643, 384-2181

WILLIAMS

OLD TRAIL INC. — 301 W. Grand Canyon Ave., Williams, AZ 86046, 635-2591

WINSLOW

***K.H. PHILLIPS & COMPANY** — 702 West Oak, Winslow, AZ 86047, 289-2456

YUMA

ARIZONA SAND & GRAVEL — 1785 S. 5th Ave., Yuma, AZ 85364, 782-7074

GRATE SAND & GRAVEL CO. — 12326 E. 8, Yuma, AZ 85364, 344-1145

***THE TANNER COMPANIES (U.M. DIV.)** — 2088 E. 20th Street, Yuma, AZ 85364, 782-9267

VALLEY SAND & GRAVEL — 1213 S. 2nd Ave., Yuma, AZ 85364, 783-5191

* Member of Arizona Rock Products Association.

Location of mine plants *continued*

Magma Copper Company Gila
Portland Mine Mohave
Western States Minerals Corp. Mohave
Pumice #2 Graham
Gila Valley Block Inc. Graham
Ray Unit Gila
ASARCO Incorporated Gila
Reymert Mine Pinal
Triple Nichol Inc. Pinal
Rillito Plant & Quarry Pima
Arizona Portland Cement Co. Pima
Rim Quarry Navajo
Building Products Company Navajo
San Manuel Division Pinal
Magma Copper Company Pinal
Silver Bell Unit Pima
ASARCO Incorporated Pima
Southwest Salt Mine Maricopa
Morton Thiokol Inc. Maricopa
Stutenroth Mill Pinal
Stutenroth Milling Pinal
St. Johns Limestone Apache
Superior Companies Apache
Superior Perlite Pinal
Harborlite Inc. Pinal
Tiger Mine Pinal
McFarland & Hullinger Pinal
Tolleson Mine Maricopa
Clinton-Campbell Contracting Inc. . Maricopa
U.S. Mine Maricopa
Roddy Resources Arizona, Inc. Maricopa
Vay Dyke Mine Gila
Kocide Chemical Gila
Weary Mine Gila
McKusick Mosaic Gila
Western States Quarries Mohave
Western States Stone Company Mohave
Western States Quarries Maricopa
Western States Stone Company Maricopa
Western States Quarries La Paz
Western States Stone Company La Paz
White Cross Mine Pinal
Pinal Gypsum Corp. Pinal
White Vulcan Coconino
Arizona Tuffite Inc. Coconino
Whitecliffs Diatomite Pinal
Whitecliffs Industries Pinal
Wildcat Hill Pit Coconino
Flagstaff Cinder Sales Inc. Coconino
Winkelman Gypsum Pinal
Superior Companies Pinal

Sand and gravel operations

Maricopa County

A&A MATERIALS INC. — 10333 E. McDowell Rd., Scottsdale, AZ 85257, 273-1126

A&B SILICA — 3015 S. 19th Ave., Phoenix, AZ 85041, 254-5863

ABC ENTERPRISES, INC. — 1804 N. 27th Ave., Phoenix, AZ 85009, 272-1792

A.C.I. ARIZONA CRUSHERS, INC. — 21001 N. 7th St., Phoenix, AZ 85024, 242-5143

***ACTION REDI-MIX** — 1943 W. Williams Drive, Phoenix, AZ 85027, 254-1921

***ALLIED CONCRETE & MATERIALS** (Division of CalMat Company) — P.O. Box 4166, 2405 N. Center, Mesa, AZ 85201. Sand & Rock Office 833-4559

***ALLIED CONCRETE, INC.** (Division of CalMat Company) — P.O. Box 14737, 11923 W. Indian School Rd., Phoenix, AZ 85031, 247-0730

***ARIZONA CRUSHERS INC.** — 700 W. McKellips Rd., Mesa, AZ 85201, 242-5143

***AZTEC MATERIALS** — 3250 E. Lehi Road, Mesa, AZ 85201, 892-0501

***BLUE CIRCLE WEST, INC.** — 2625 S. 19th Avenue, Phoenix, AZ 85009, 253-2505, 274-6977

***CALMAT COMPANY OF ARIZONA** — 1801 E. University Drive, Phoenix, AZ 85031, 254-8465

CAMELBACK SAND & STONE, INC. — 8528 E. Avalon Drive, Scottsdale, AZ 85251, 941-8830

***CENTURY MATERIALS** — 2156 E. 1st Street, P.O. Box 3175, Tempe, AZ 85281, 966-4188

***CHANDLER READY MIX** — 131 East Baseline, P.O. Box 928, Mesa, AZ 85201, 892-0501

JOE CONWAY SAND & GRAVEL — 6509 W. Orange-wood Ave., P.O. Box 1377, Glendale, AZ 85301, 937-1684

***CORNERSTONE MATERIALS INC.** — 3617 N. Gilbert, P.O. Box 1402, Mesa, AZ 85202, 969-2921

ELIAS J. REDI-MIX — 2425 W. Broadway, Phoenix, AZ 85041, 243-7066

***FOUNTAIN HILLS CONCRETE CO.** — P.O. Box 17959, Fountain Hills, AZ 85268, 837-1555, 258-3910

GRAND MEXICAN ADOBE CONCRETE & MINI-MIX — 7050 Grand Ave., Glendale, AZ 85301, 931-3726

***IDEAL ROCK PRODUCTS** — P.O. Box 27368, Tempe, AZ 85282, 894-0613

***INDUSTRIAL ASPHALT INC.** — P.O. Box 20852, 1705 E. University Dr., Phoenix, AZ 85036, 258-3729

JOHNSON-STEWART-JOHNSON MINING CO., INC. — 1635 N. Alma School Rd., Mesa, AZ 85201, 978-4141

KACHINA REDI-MIX — 1976 E. Pima St., Tempe, AZ 85281, 894-0511

KELTON EDWARDS CONTRACTING CO. — 1544 E. Mesal St., Phoenix, AZ 85022, 870-3177

MARVEL BUILDING & MASONRY SUPPLY, INC. — 16602 N. 32nd St., Phoenix, AZ 85022, 971-2710

***MESA MATERIALS INC.** — 3410 N. Higley Road, Mesa, AZ 85205, 830-1521

***MESA SAND & ROCK INC.** — 2246 N. Country Club Drive, Mesa, AZ 85201, 964-1773

MINI MIX CONCRETE — 2425 S. 40th St., Phoenix, AZ 85034, 257-0041

***PHOENIX REDI-MIX COMPANY** — Route 5, Box 650A, Phoenix, AZ 85009. 3635 S. 43rd Ave., 272-2637

***SALT RIVER SAND & ROCK** — P.O. Box 728, Mesa, AZ 85201, 990-1987

***SANNER CONTRACTING COMPANY** — 415 E. Mineral Rd., Phoenix, AZ 85072, 276-7334

SMITH SAND & GRAVEL — Tirra Springs, 374-5448, Black Canyon City, AZ 85324

***SUPERIOR COMPANIES** — 2402 S. 19th Ave., P.O. Box 6497, Phoenix, AZ 85005, 253-2116

STANDARD CONCRETE, INC. — 35th Ave. & W. Pinnacle Peak Rd., Phoenix, AZ 85034, 869-9484

***THE TANNER COMPANIES (U.M. DIV.)** — P.O. Box 52124, Phoenix, AZ 85072, 220-5000, 3640 S. 19th Ave., Baseline & Oglesby Road, Buckeye, AZ 85326, 386-4229

***TRI-CITY REDI MIX** — P.O. Box 148, 2128 E. 1st Street, 967-7597, Tempe, AZ 85281, 968-2180

***UNION ROCK & MATERIALS CORP.** — P.O. Box 8007, 2800 S. Central Ave., Phoenix, AZ 85066, 276-4211. Beeline Highway, 990-0844. 8507 N. El Mirage Rd., 935-2653

WESTERN SAND & ROCK — P.O. Box 65, Avondale, AZ 85323, 130 Ave. & W. Van Buren, 932-1391

Pima County

A.J. GILBERT CONST. CO. — 6741 N. Thornydale #21, Tucson, AZ 85741, 622-8522

ACTION SAND & GRAVEL — 2530 W. Curtis Road, Tucson, AZ 85743, 887-2986

ARROYO ROCK & MATERIALS — 3700 W. Sunset, Tucson, AZ 85743, 888-4007

B&B REDI-MIX CONCRETE — 3200 E. Camino Del Cerro, Tucson, AZ 85745, 887-6416

BLUE CIRCLE WEST INC. — P.O. Box 12217, 7301 E. Speedway Blvd., Tucson, AZ 85732, 298-2371, 5400 W. Massingale Rd., 744-2847

DOWNEY LA & SONS SAND & ROCK — 11600 E. Valencia Rd., Tucson, AZ 85708, 886-2315

***G & A SAND AND GRAVEL INC.** — P.O. Box 5925, Tucson, AZ 85703, 293-9283

***GRANITE CONSTRUCTION CO.** — 4115 E. Illinois, P.O. Box 27566, Tucson, AZ 85726, 748-8000

***MILLER R.E. PAVING AND CONST., INC.** — 4102 E. Illinois, Tucson, AZ 85707, 748-0336

***SAN XAVIER ROCK & MATERIALS** — 1011 W. Valencia Rd., Tucson, AZ 85726. 2451 N. Old Nogales Hwy., Green Valley, 889-6341

***THE TANNER COMPANIES** — At Orange Grove, 6601 N. Casa Grande Hwy., Tucson, AZ 85704, 744-3222

TANQUE VERDE MINING & CONSTRUCTION — 1717 N. Tanque Verde Loop Rd., Tucson, AZ 85710, 749-3779

TANQUE VERDE SAND & SOIL, INC. — 210 W. Ventura, Tucson, AZ 85705, 628-7477

TUCSON MINI-MIX CONCRETE — 2225 S. Mission Rd., Tucson, AZ 85743, 624-9757

***TUCSON SAND AND ROCK CO.** — 6601 N. Casa Grande Hwy., Tucson, AZ 85743, 774-3222

VALLEY ROCK & SAND CO. — 10700 E. Irvington Rd., Tucson, AZ 85730, 296-1733

Statewide

AJO

JIM BUSH READY MIX — 671 N. 2nd Ave., Ajo, AZ 85321, 387-6250

APACHE JUNCTION

***CASHWAY CONCRETE & MATERIALS** — 3695 S. Meridan Rd., 830-5600, Apache Junction, AZ 85220

ASH FORK

DUNBAR STONE COMPANY, INC. — 901 Lewis Ave., P.O. Box 246, Ash Fork, AZ 86320, 637-3592

AVONDALE

WESTERN SAND & ROCK INC. — P.O. Box 65, Avondale, AZ 85323, 932-1391. 130 Ave. & W. Van Buren

BENSON

COCHISE MATERIALS, INC. — County Road, P.O. Box 910, Benson, AZ 85602, 586-3421

BISBEE

A.J. GILBERT CONSTRUCTION CO. — P.O. Box 5288, Bisbee, AZ 85602, 586-3421

EADS CONSTRUCTION & REDI-MIX — Don Luis, Bisbee, AZ 85603, 432-4121

BUCKEYE

MATERIAL SUPPLY CORP. — 803 Irwin Ave., Buckeye, AZ 85326, 386-5702

***THE TANNER COMPANIES** — Baseline & Oglesby Rd., Buckeye, AZ 85326, 935-3571

WESTERN SAND & ROCK — 815 N. 1st Ave., Buckeye, AZ 85326, 932-1391

BULLHEAD CITY

***W.M.K. TRANSIT MIX CO.** — P.O. Box 31, Bullhead City, AZ 86430, 754-3887

CAMP VERDE

DON SUMMIT CONCRETE — P.O. Box 503, Camp Verde, AZ 86322, 567-3211

SUPERIOR READY MIX — Hwy. 279, P.O. Box 786, Camp Verde, AZ 86322, 567-3368

CASA GRANDE

PINAL MATERIALS — P.O. Box 1101, Casa Grande, AZ 85222, 836-1200

COOLIDGE

***THE TANNER COMPANIES** — Florence Hwy., Coolidge, AZ 85228, 723-5851

CATALINA

CATALINA MARBLE, INC. — 16302 N. Oracle Rd., Catalina, AZ 85738, 825-9398

COTTONWOOD

***D & M MATERIALS** — P.O. Box 733, Cottonwood, AZ 86326, 634-7740

DEWEY

CONSOLIDATED ROCK & MATERIALS — Dewey, AZ 86327, P.O. Box 424, 632-5115

DOUGLAS

MADDUX & SONS, INC. READY MIX — 1927 Pan American, P.O. Box 1077, Douglas, AZ 85607, 364-7564

SALCIDO READY MIX & MATERIALS CO. — 101 W. 9, Douglas, AZ 85607, 364-8448

DUNCAN

OAKCREEK CONTRACTING INC. — South 4, Duncan, AZ 85534, 359-2722

EAGER

SLADE DOUG EXCAVATING — 115 W. 3rd Ave., Eager, AZ 85925, 333-4785

FLAGSTAFF

BONNER B B JR ENTERPRISES INC. — Dodge & Empire, Flagstaff, AZ 86001, 526-3228

FLAGSTAFF READY MIX CO. — 633 E. Brannen Ave., P.O. Box 816, Flagstaff, AZ 86002, 779-2196

LITTLE B MINING CO., INC. — Dodge & Empire, Flagstaff, AZ 86001, 526-5571

Preface

This directory was compiled in November, 1987 from field visits and information received by the department engineers. For the purpose of this directory, an active mine is arbitrarily defined as a mine that is in continuous operation, either in production or under full-time development for production. Also included in the directory are custom milling operations which are active or available on a full-time basis.

It is acknowledged that there are additional mines not listed which are in an exploration, evaluation, or part-time development phase. There are others where production is on an intermittent basis which are not listed. The Department publishes a companion publication entitled *Arizona Mineral Development*. Its purpose is to briefly highlight specific properties receiving exploration and/or development activity. Also included are mines which have recently had production but which are not included in this directory of active mines. It is not the intent of the Department to neglect or ignore an operation. Not being a regulatory or taxing authority, our data is obtained by the Department field engineers and/or by voluntary submission of information for our records.

The directory is arranged alphabetically by company name. Each listing includes corporate addresses, mine name and location, operation description, and key personnel and titles. At the end of the directory is an alphabetic listing that provides county and cross reference to the operating company.

Arizona Active Mines Index

COMPANY

Andrada Marble Quarry..... Pima
 Andrada Marble Company, Inc. Pima
 ARMCO Custom Mill Cochise
 Alanco Ltd. Cochise
 Ashfork Plant & Quarries. Coconino
 Western States Stone Company. Coconino
 Bagdad Pumice Mine Yavapai
 Ramhead Mining Company Yavapai
 Black Mesa Mine Navajo
 Peabody Coal Company Navajo
 Bowie Chabazite Operations Cochise
 Union Carbide Company Cochise
 Camp Verde Gypsum Yavapai
 Superior Companies Yavapai
 Canyon. Coconino
 Energy Fuels Nuclear Inc. Coconino
 Cheto No. 1. Apache
 United Catalyst, Inc. Apache
 Cheto No. 2. Apache
 Harshaw-Filtrol Corp. Apache
 Chicago Pit Pinal
 Nord Sil-Flo Corp. Pinal
 Clarkdale Quarry & Plant Yavapai
 Phoenix Cement Company. Yavapai
 COD Mine Mohave
 Alanco Ltd. Mohave
 Congress Mine Yavapai
 Echo Bay Mines Inc. Yavapai
 Contention Mine Cochise
 PBR Minerals Inc. Cochise
 Copper Hill Mine. Gila
 Triple Nichol Inc. Gila
 Copper Queen Branch Cochise
 Phelps Dodge Corporation. Cochise
 Copperstone La Paz
 Cyprus Copperstone Gold Corp. La Paz
 Crown Claims Coconino
 Arizona Tufflite Inc. Coconino
 Cyprus Bagdad Yavapai
 Cyprus Copperstone Gold Corp. Yavapai

Cyprus Casa Grande Pinal
 Cyprus Copperstone Gold Corp. Pinal
 Cyprus Mineral Park Mohave
 Cyprus Copperstone Gold Corp. Mohave
 Cyprus Sierrita Pima
 Cyprus Metals Company Pima
 Darling Cinder Pit Coconino
 Superlite Builders Supply Coconino
 Devils Wash Pima
 Arizona Placer Pima
 Dewey Ranch #2 Yavapai
 Building Products Company Yavapai
 Dunbar Quarries Yavapai
 Dunbar Stone Company Yavapai
 Dunbar Quarries Coconino
 Dunbar Stone Company Coconino
 Dunbar Quarries Maricopa
 Dunbar Stone Company Maricopa
 Dunbar Quarries Mohave
 Dunbar Stone Company Mohave
 Dunbar Stone Plant. Yavapai
 Dunbar Stone Company Yavapai
 Feldman Quarry Gila
 National Gypsum Company. Gila
 Flagstone Quarries Coconino
 Harley Gray Stone Company. Coconino
 Gladiator Yavapai
 Nor-Quest Arizona Inc. Yavapai
 Gold Bond Building Products Plant ... Maricopa
 National Gypsum Company. Maricopa
 Gold Hill Mine. Pinal
 Little Hill Mines Inc. Pinal
 Grace Chabazite Mine. Cochise
 GSA Resources. Cochise
 Hayden Unit Gila
 ASARCO Incorporated Gila
 Hermit Mohave
 Energy Fuels Nuclear Inc. Mohave
 Houck Silica Sand Apache
 Ariz. Silica Sand Company Apache
 Inspiration Pits & Dumps. Gila

DIRECTORY OF ACTIVE MINES IN ARIZONA 1987-88

Department of Mines and Mineral Resources

John H. Jett, Director

Phoenix Office: Tucson Office:
 Mineral Building, Fairgrounds 416 W. Congress, Rm 190
 Phoenix, Arizona 85007 Tucson, Arizona
 (602) 255-3791 (602) 628-5399

BOARD OF GOVERNORS

Donald W. Hart - Phoenix
 Chairman

Harvey W. Smith - Scottsdale Vice Chairman
 Clifford B. Altfeld - Tucson Secretary

Edna Vinck - Globe Member
 Roy Miller - Phoenix Member

This Directory of Active Mines for 1987-88 is published for Arizona Department of Mines and Mineral Resources by:

SOUTHWEST CONTRACTOR
 300 West Clarendon, Suite 350
 Phoenix, AZ 85013

Material for the sand and gravel operations list was gathered and furnished by Arizona Rock Products Association, 420 W. Roosevelt, Phoenix, Arizona 85003, 271-0346. Additional copies are available from the Department of Mines and Mineral Resources' Phoenix or Tucson offices for \$2.00 plus \$1.00 postage and handling if mailed. A map which shows the locations of each active mine (but not sand and gravel operations) is available from the Department for \$2.00 plus \$1.00 postage and handling.

Inspiration Consolidated Copper. Gila
 Inspiration Plant & Smelter. Gila
 Inspiration Consolidated Copper. Gila
 Kanab North. Mohave
 Energy Fuels Nuclear Inc. Mohave
 Kayenta Mine Navajo
 Peabody Coal Company Navajo
 Lyles Mine Yavapai
 GSA Resources Inc. Yavapai
 M C Canyon Quarries. Coconino
 Hudman Stone Coconino
 Mayer Onyx Quarry Yavapai
 Halquist Stone Co., Inc. Yavapai
 Mayer Schist Quarries Yavapai
 Halquist Stone Co., Inc. Yavapai
 McCabe Yavapai
 Stan West Mining Corp. Yavapai
 Mission Unit Pima
 ASARCO Incorporated Pima
 More Sand, Moon Sand Coconino
 Arizona Tufflite Inc. Coconino
 Morenci Branch Greenlee
 Phelps Dodge Corporation. Greenlee
 Nelson Quarries & Plant. Mohave
 Chemstar Inc. Mohave
 New Cornelia Branch Pima
 Phelps Dodge Corporation. Pima
 New River Slate Quarry Maricopa
 Building Products Company Maricopa
 Pantano Clay Pits Pima
 Clinton-Campbell Contracting Inc. Pima
 Paul Lime Quarry & Plant Cochise
 Can-Am Corporation Cochise
 Phoenix Plant Maricopa
 Building Products Company Maricopa
 Pigeon Coconino
 Energy Fuels Nuclear Inc. Coconino
 Pine Nut Mohave
 Energy Fuels Nuclear Inc. Mohave
 Pinto Valley Division Gila

Continued

ALANCO LTD.

Office

7345 E. Acoma Drive, Scottsdale 85260 - Phone 991-8540.

Chairman of the Board Richard Jones
President Kevin Jones
Vice President Larry Kersey

ARMCO Custom Mill T20S R22E Sec. 21
Located 4 miles east of Tombstone on Charleston Road - Custom milling facility including metallurgical laboratory - Mill has flotation, gravity, and cyanide circuits.

COD T23N R17W Sec. 33
Located 15 miles northwest of Kingman - Employees 5 - Underground base/precious metal mine - 60 TPD gravity mill - Under development.

Manager Chuck Porter

AMERICAN GIRL MINING CORP.

American Girl, California
2450 South 4th Avenue, Yuma 85364 - Phone 344-8924 - Employees 30 - Located 25 miles northwest of Yuma in California - Open pit gold mine - Developing underground gold mine - Cyanide heap leach recovery.

Mine Manager Robert Renaud

ANDRADA MARBLE COMPANY, INC.

Andrada Marble Quarry T17S R16E Sec. 21
4901 E. Drexel Road, Tucson 85706 - Phone 574-1414 - Employees 9 - Mine site located 17 miles southeast of Tucson - Open pit marble mine - Used for calcium feed additive, plastering material, decorative stone, roofing material - 3,000 TPM.

President and General Manager David Hartley
Vice President Barbara Hartley
Secretary Willis Dees

**APACHE STONE DIVISION,
Halquist Stone Co. Inc.**

Mayer Onyx Quarry T12N R1E Sec. 22
Mayer Schist Quarries T12N R1E Sec. 26
22040 N. 21st Ave., Phoenix 85027 - Phone 267-8658 - Employees 4 - Quarries located near Mayer - Onyx marble quarry - Schist quarries - Building and dimension stone - Marketed throughout the United States.

President Perry Halquist
Manager Harvey Bosch
Clerk JoAnne Bosch

ARIZONA PLACER

Devils Wash T15S R2E Sec. 2
HCR Box 840, Sells 85634 - Phone 383-2391 - Employees 2 - Located approximately 1 1/2 miles southwest of Quijotoa - Gold placer operation using wet gravity

separation equipment - Production capacity 500 yards/week.

Operator Don Kilgore

**ARIZONA PORTLAND CEMENT DIVISION
CalMat Inc.**

State Sales Office
2400 N. Central, Suite 308, Phoenix 85004 - Phone 271-0069.

Senior Vice President Vaughn S. Corley

Rillito Plant & Quarry T12S R11E Sec. 26
P.O. Box 338, Rillito 85654 - Phone (Tucson) 622-3503 - Employees 240 - Limestone quarry 5 miles from plant - Cement - Annual capacity 1,100,000 tons cement - Longest conveyor transport system in state.

Plant Manager Tom Brosnan
Plant Superintendent Michael Robertson
Plant Chemist J. Boyett
Plant Engineer John Frye
Chief Electrician Jack Meeler
Personnel Manager Fran Young
Quarry Supervisor Chuck Hansen
Purchasing Agent Tom Follett

ARIZONA SILICA SAND COMPANY

Houck Silica Sand T22N R29E Sec. 29
P.O. Box 108, Houck 86506 - Phone 688-2602 - Employees 15 - Open pit mine - Plant south of Houck - Hydrafrac sand for oil well treatment - Markets include New Mexico and California.

President Robert D. Fisher
General Manager Elmer J. Gilstrap
Foreman Ralph Nelson

ARIZONA TUFFLITE INC.

Crown Claims T23N R7E
More Sand, Moon Sand T23N R7E
White Vulcan T23N R7E
2432 W. Peoria, Phoenix 85029 - Phone 931-3682 - Located 12 miles north of Flagstaff - Pozzolanitic pumice quarries - 6000 yard/month - Used in making lightweight redimix and block - Large size material used in the preparation of "stone washed blue jeans" - Marketed in and out of Arizona.

President C.T. Morgan
Vice President Ed Morgan
Vice President, Sales Wes Morgan
Secretary/Treasurer Clay Morgan

ASARCO INCORPORATED

Tucson Office
1150 N. 7th Avenue, P.O. Box 5747, Tucson 85703 - Phone 792-3010.

General Manager - Verde Valley
Operations William Carter
Maintenance Supervisor Alvin Hazelwood
Production Manager Danny Parker

St. Johns Limestone T12N R29E Sec. 4
P.O. Box 2777, St. Johns 85936 - Phone 367-5126 Ext. 173 - Limestone quarry 5 miles southeast of St. Johns - Provides limestone for coal plant gas scrubbing.

Superintendent Ed Bishop

Winkelman Gypsum T6S R16E Sec. 27
P.O. Box 327, Winkelman 85292 - Phone 357-7002 - Gypsum Quarry gypsum for Phoenix Cement Plant.

Superintendent John Nevitt

SUPERLITE BUILDERS SUPPLY

P.O. Box 23163, Phoenix 85063 - 4150 W. Turney - Phone 269-3561.

President Fred Bengston

Darling Cinder Pit T21N R9E Sec. 2
P.O. Box 40159, Flagstaff 86004 - Phone 526-5499 - Employees 5 - Open pit mine east of Flagstaff - Cinder used for building blocks.

Mine Superintendent Terry Mitchell

TRIPLE NICHOL, INC.

R.R. 1, Box N123, Globe - Phone 425-7006 - Employees 75.

President Monty Nichols

Copper Hill Mine T1N R15E Sec. 15
Silica flux for copper smelters - Northwest of Globe.

Reymert Mine T2S R11E Sec. 22
Silver bearing silica flux for copper smelters - West of Superior.

UNION CARBIDE CORP.

P.O. Box 1029, Grand Junction, Colorado 81502 - Phone (303) 245-3700.

Senior Mining Engineer Jim Kirchner

Bowie Chabazite Operations T11S R28E & T11S R29E
Open pit mines operated by independent contract mining company - Crude chabazite used for specialty adsorbants - Shipped out of state for further processing.

UNITED DESSICANTS DIVISION

United Catalyst, Inc.

Corporate Headquarters - P.O. Box 32370, Louisville, KY 40232 - Phone (502) 634-7200 - Processing plant c/o United Dessicants, P.O. Box 105, Belen, NM 87002 - Phone (505) 864-6691.

Cheto No. 1 T21N R29E Sec. 23
Located approximately six miles southeast of Sanders in NE AZ - Surface strip bentonite mine - Seasonal operation - Used in catalysts and in production of dessicants.



Photo: courtesy Arizona Department of Mineral Resources

Vice President (Louisville) Bill Monin
Operations Manager (Belen) Dennis Strain

WESTERN STATES MINERALS CORP.

Portland Mine T23N R21W Sec. 15
P.O. Box 6367, Kingman 86402 - Phone 753-1224 - Employees 10 - Located 45 miles northwest of Kingman in the Black Mountains - Open pit gold mine - Cyanide heap leach - Recovery by carbon adsorption.

Mine Superintendent Rick Fiddler
Process Superintendent Michael Campbell

WESTERN STATES STONE COMPANY

2830 Grand Ave., Phoenix 85017 - Phone 253-2018.

President C.E. Webster

Ashfork Plant Quarries T21N R2W Sec. 3
P.O. Box 316 - Ash Fork 86220 - Phone 637-2542 - Employees 25 - Quarries located in Coconino, La Paz, Maricopa, Mohave, and Yavapai Counties - Stone processing facility in Ashfork - Commercial and decorative building stone marketed locally and out of state.

Superintendent Ismah Albright

WHITECLIFFS INDUSTRIES

Whitecliffs Diatomite T9S R17E Sec. 24
460 W. Roger Road, Suite 101, Tucson 85705 - Phone 887-0220 - Employees 20 - 10 miles southeast of Mammoth - Surface mining diatomaceous earth - Dry air cyclone plant - 75 TPD - Diatomite for industrial filler products - Marketed throughout the United States.

President Gilbert Mott
Marketing/Sales Director Graham Mott
Mine Engineer Mark O'Connor
Research Director Otto Kohl

7879 - Employees 3 - Mine located 2 miles east of Bagdad - Open pit pumice mine produces absorbents and cat litter.

President Victor S. Randolph
 Mine Manager Reginald Tenney

RODDY RESOURCES ARIZONA, INC.

U.S. Mine T4N R8W Sec. 1
 P.O. Box 2406, Wickenburg 85358 - Phone 684-2865 - Employees 26 - Located 25 miles southwest of Wickenburg - Open pit gold mine - Heap leach carbon absorption operation - 30,000 tons per month.

Mine Manager Ron Johnson
 Mine Engineer Dave Skidmore
 Plant Metallurgist Jacque Lateny

STAN WEST MINING CORPORATION

McCabe T13N R1E Sec. 30
 P.O. Box 236, Humboldt 86329 - Phone 632-5165 - Employees 75 - Located 20 miles east of Prescott - Underground precious and base metal mine - Gravity, copper flotation and CIP cyanide mill - Capacity 500 TPD - Mine and mill under development - Production anticipated 3rd Quarter 1988.

Mine Manager Derrick May
 Mine Superintendent Howard Last
 Mill Superintendent Russell Hoar
 Mine Geologist Richard Pape

STUTENROTH MILLING

T7S R7E Sec. 8
 Rt. 4, Box 71D, Casa Grande 85222 - Phone 836-5568 - Employees 2 - Custom gravity mill - 50 TPD all types of ore - Located eight miles southeast of Casa Grande.

SUPERIOR COMPANIES

1700 N. 7th Street #5, Phoenix 85006 - Phone 253-2116 - Employees 70.

President Archer V. Shelton
 Vice President & Manager
 Mine Division Lester Hall
 Corporate Secretary Mary Kessler
 Controller Don Fischer

Camp Verde Gypsum T13N R5E Sec. 11
 P.O. Box 308, Cottonwood 86326 - Phone 567-3854 (direct Phoenix line 253-5590) - Gypsum quarry four miles southeast of Camp Verde - Supplies gypsum to Phoenix Cement Plant.

Southwestern Mining Department

General Manager T.E. Scartaccini
 Assistant to General Manager D.F. Skidmore
 Accounting Manager G.H. Myers
 Chief Environmental Engineer V. C. Martz

Mining Department/Corporate Office

Assistant to Vice President A.D. Coumides
 Chief Geologist S.A. Anzalone

Mineral Beneficiation Department

Director D.E. Crowell
 Chief Metallurgist T.D. Henderson

Exploration Department

Manager, Western U.S.A. W.L. Kurtz
 Manager, Southwestern US Division J.D. Sell

Acid Sales Department

National Sales Manager G.P. Gillen

Department of Safety and Technical Employment

General Safety Engineer A.L. Schaefer

Hayden Unit T5S R15E Sec. 14
 Box 98, Hayden 85235 - Phone 356-7804 - Employees 450 - Copper smelter capacity 940,000 TPY - Acid plant capacity 2,800 TPD.

Manager L.W. Lindquist
 Operations Manager D.J. Parker
 Technical Services Manager W.D. Marczeski

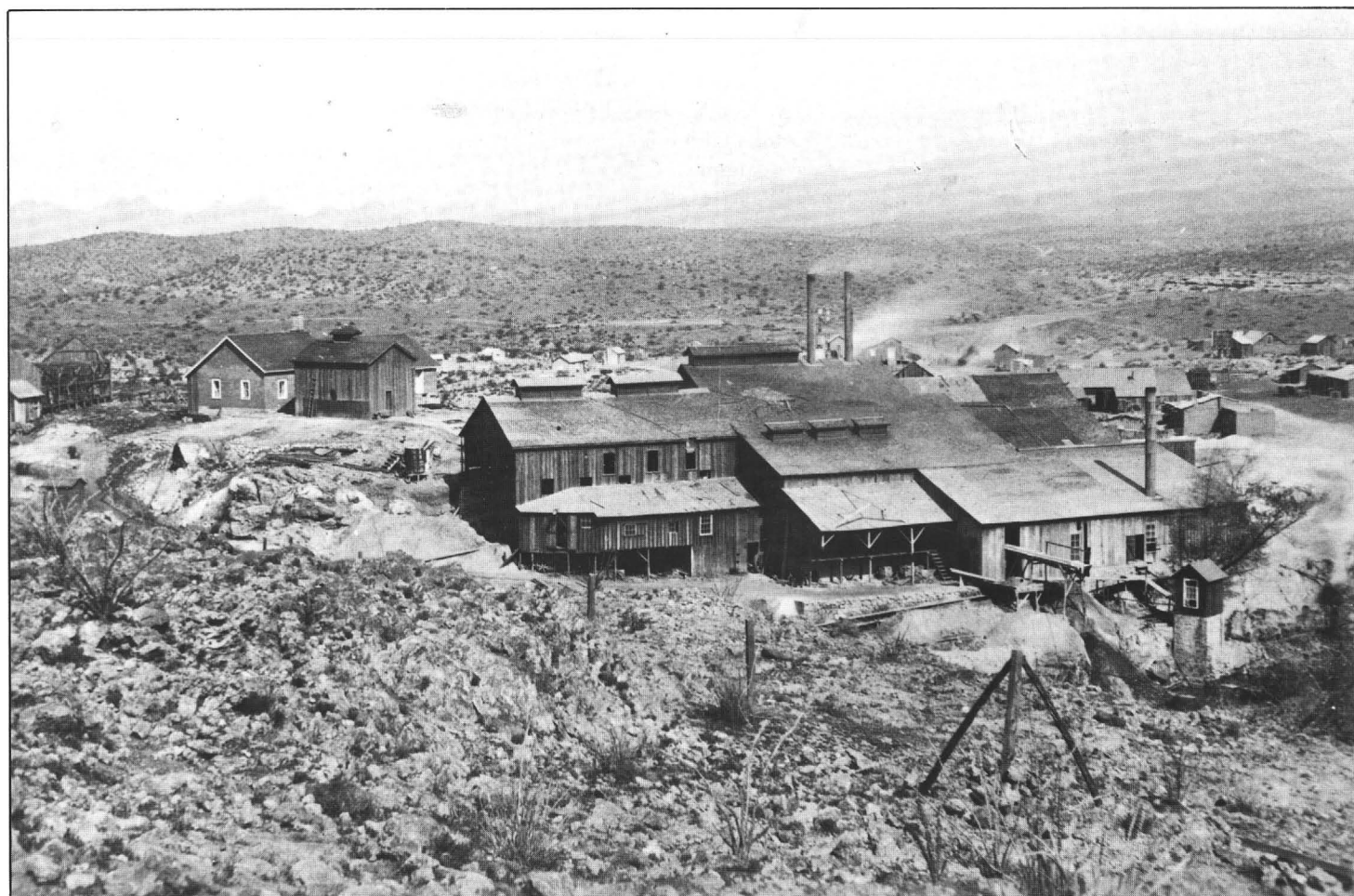
Plant Engineer R.L. Christiansen
 Accounting Manager Jim O'Neal
 Purchasing Agent K.C. Newnam
 Industrial Relations Manager M.A. Burnam

Mission Unit T16S R13E Sec. 31

Open Pit Copper Mine Concentrator T16S R12E Sec. 36
 Box 111, Sahuarita 85629 - West Pima Mine Road - Phone 791-2920 - Employees 357 - Open pit copper mine - Concentrator 29,000 TPD.

Manager B.K. Malone
 Superintendent - Service J.B. Lichtenhan
 Mine Superintendent S.L. Lakosky
 Chief Engineer M.A. Melcher
 Geologist R.B. Cummings
 Chief Chemist C.D. Lobley
 Chief Metallurgist C.A. Carroll
 Mechanical Superintendent H.E. Hughes
 Mill Superintendent H.W. Walker
 Purchasing Agent W.B. Manakee
 Chief Accountant D.J. Hoffman
 Personnel Administrator J.F. Coxon
 Safety Administrator P.J. Maley

Ray Unit
Open Pit Copper Mine Concentrator, Smelter, Acid Plant T3S R13E Sec. 10, 11, 14 & 15
 T5S R15E Sec. 11
 P.O. Box 9, Hayden 85235 - Phone 356-7811 -



Silver King Mine, Pinal City, Arizona.

Photo: courtesy Arizona Department of Mineral Resources

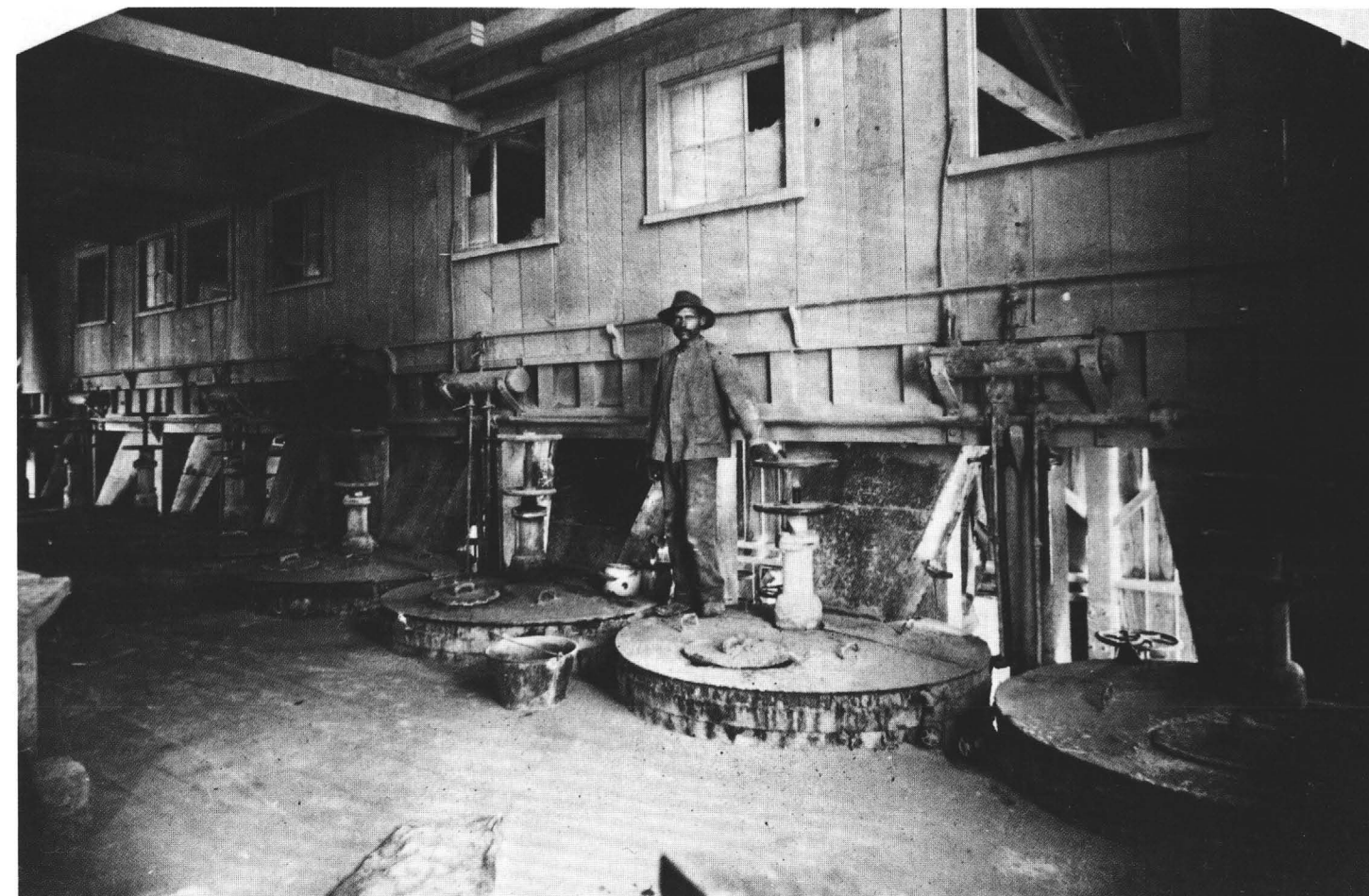


Photo: courtesy Arizona Department of Mineral Resources

Employees 685 - Open pit copper mine - Dump leach-precipitation plant - Heap leach-solvent extraction - electrowinning plant - Concentrator rated at 41,000 TPD - 400,000 TPY smelter (On Standby) - 900 TPD acid plant (On Standby).

General Manager..... R.W. Banghart
Dir. of Safety & Environmental Cont. Bryon Brumbaugh
Industrial Relations Director..... Rulon Ellett
Personnel Administrator Joyce L. Morris
Purchasing Agent Bob Henry
Technical Services Superintendent N.A. Gambell
Concentrator Superintendent S.A. McGee
Mining Superintendent..... R.E. Thompson
Mining Engineer S.F. Johnson
Maintenance Superintendent..... Bill Pyle
Division Geologist..... Edward John

Silver Bell Unit T12S R8E Sec. 11
Marana 85653 - Phone 622-6751 - Employees 30 - Open pit copper mine - 11,000 TPD concentrator (On Standby) - Dump leach and precipitation plant operating.

Mill Superintendent D.J. Duncan
Maintenance Superintendent..... D.J. Shea
Chief Accountant A.J. Robles

BUILDING PRODUCTS COMPANY

Phoenix Plant
4850 W. Buckeye Road, Phoenix 85043 - Phone 272-5576 - Employees 1 (mining) - Plant consumes clay to produce extruded sewer pipe and roofing tile.

Plant Manager..... Vern Hamner
Mine Manager..... Don Morris

Rim Quarry T11N R19E Sec. 30
Clay mine located 10 miles southwest of Clay Springs.

New River Slate Quarry T7N R3E Sec. 5, 6
Slate quarry located approximately 6 miles northeast of New River.

Dewey Ranch #2 T14N R1E Sec. 15
Clay mine located approximately 6 miles north of Dewey.

CHEMGOLD INC.

Picacho Mine, California
1891 Rail Avenue, P.O. Box 2015, Yuma 85364 - Phone 783-1891 and 783-7882 - Employees 30 - Open pit gold mine located 24 miles north of Yuma in California - Open pit mine - Heap leaching - Carbon adsorption - Desorption - Electrowinning - Annual production 24,000 oz. gold.

President..... Chester F. Miller
Sr. Vice President Tom Wood
Chief Financial Officer..... Robert Wilhelm
Mine Manager..... Mike Fitzgerald
Mine Engineer..... Pat Dougherty

Metallurgist Art Harter

CHEMSTAR INC.

3116 E. Shea Blvd., Suite 232, Phoenix 85028 - Phone 263-9562.

Sales Manager Clare Benson

Nelson Quarries & Plant T25N R10W Sec. 25
P.O. Box 197, Peach Springs 86434 - Phone 422-3216 & 422-3217 - Employees 58 - Limestone quarry - Lime plant rated at 1800 tons of lime per day - Lime is used for processing and building industry - Marketed in Arizona and other states - Most goes to power plants for stack scrubbing and water purification.

Quarry Superintendent..... James Osborne
Production Superintendent Jerry Young
Maintenance Superintendent..... Pat Perbilcox
Plant Buyer Perry Curley
Plant Manager..... Ed Barry

CLINTON-CAMBELL CONTRACTING INC. Phoenix Brick Yard

1814 S. 7th Ave., Phoenix 85007 - Phone 258-7158 - Employees 100.

President..... Frederic Campbell
Plant Superintendent Don Campbell

Tolleson Mine T1N R3E Sec. 18
Clay pit located on 83rd Avenue north of Van Buren - Used in manufacture of clay products.

Pantano Clay Pits T16S R17E Sec. 21, 26, 27, 28 & 35
Clay pits located 25 miles southeast of Tucson (North of Interstate 10, 2 miles northwest of the Pantano Interchange) - Clay used in the manufacture of structural clay products.

CYPRUS COPPERSTONE GOLD CORPORATION

Copperstone T6N R20W Sec. 12
P.O. Box AI, Parker 85344 - Phone (619) 665-9261 - Employees 100 (Includes 60 Morrison-Knudsen contract miners) - Located 12 miles north of Quartzsite - Open pit gold mine - Agitation leach - Rated capacity 2,700 TPD.

Resident Manager..... M.M. McGee
Plant Superintendent K.G. Markkola
Administrative Supervisor M.A. Browning
Mine Superintendent C.D. Iles
Chief Assayer..... W.D. Amby

CYPRUS METALS COMPANY

7200 S. Alton Way, P.O. Box 3299, Englewood, CO 80155 - Phone (303) 740-5000.

Vice President & Controller Daniel Zang

Cyprus Bagdad T14N R5W Sec. C
P.O. Box 245, Bagdad 86321 - Phone 633-2241 -

Manager Quality Control..... Charles J. Stenftenagel
Manager Reclamation Wayne E. Hilgedick
Safety Supervisor Jack R. Gibbs
Safety Supervisor Delbert J. Mariano, Sr.
Safety Supervisor Ruth Williams

Kayenta Mine T36W R18E Sec. 9
P.O. Box 606, Kayenta 86033 - Phone 677-5208 - Employees 525 - Surface coal mine - Located 30 miles southwest of Kayenta.

Mine Superintendent Joe Johnson
Assistant Superintendent Robert D. Boone
Manager Quality Control..... Charles Stenftenagel
Manager Reclamation Wayne E. Hilgedick
Safety Supervisor Daniel Ashike, Jr.
Safety Supervisor Martha Descheenie
Safety Supervisor Joe Holgate

PHELPS DODGE CORPORATION

Corporate Headquarters
2600 N. Central Ave., Phoenix 85004-3015 - Phone 234-8100.

Chairman of the Board G.R. Durham
Executive Vice President,
Primary Metals L.R. Judd

Western Operations
2600 N. Central Ave., Phoenix 85004-3015 - Phone 234-8100

Vice President & General Manager .. A.E. Himebaugh
Vice President M.P. Scanlon
Manager of Engineering Services R.W. Rice
Controller Primary Metals Group R.G. Peru
Director of Employee Relations J.H. Ladd
Assistant Director of
Employee Relations T.D. McWilliams
Director, Materials Management R.G. Mock
Purchasing Agent C.R. Jennings
Western Traffic Manager..... S.S. Balich
Manager, Western Exploration Office.... D.R. Ranta
(P.O. Box 50427, Tucson 85703-1427)

Exploration and Development Group
2600 N. Central Ave., Phoenix 85004-3015 - Phone 234-8100

Sr. Vice President P.J. Ryan
Legal and Administrative Manager . J. Steven Whisler

United Verde Mine T16N R2E Sec. 22
Located at Jerome - Phone 634-2622

Agent..... Andrew Peterson

Copper Queen Branch T23S R24E Sec. 9
Highway 92, Bisbee 85603 - Phone 432-3621 - Employees 34 - Mine dump leaching - Copper precipitation plant.

General Superintendent J.H. Ladd

Morenci Branch T4S R29E

Sec. 3, 4, 5, 8, 9, 10, 15, 16, 17, 21, 22 & 23
Morenci 85540 - Phone 865-4521 - Employees 1560 - Open pit copper mine - Two concentrators (one with molybdenum circuit) - Total capacity 100,000 TPD - 650,000 TPY smelter with 2,400 TPD acid plant (inactive) - Dump leaching - Precipitation plant - Solvent extraction-electrowinning plant.

Manager J.L. Madson
Assistant Manager..... H.E. Dunham
Superintendent of Mines Michael Allen
Assistant Superintendent
of Concentrators Randy Schneider
Superintendent SX-EW T.R. Snider
Mechanical and Electrical Supt. J.B. McBiles
Director of Engineering and Geological
Services E.M. Schern

New Cornelia Branch T12S R6W Sec. 23 & 27
Ajo 85321 - Phone 387-7451 - Employees 24 - Open pit copper mine - 30,000 TPD concentrator with molybdenum circuit - 190,000 TPD smelter with acid plant - All inactive.

PHOENIX CEMENT COMPANY

Phoenix Office
2505 W. Beryl, P.O. Box 35395, Phoenix 85069 - Phone 264-0511 - Employees 11.

President & CEO..... John N. Stoss
VP & Chief Financial Officer ... James E. Carmichael

Clarkdale Quarry & Plant T16N R2E Sec. 11
P.O. Box 428, Clarkdale 86324 - Phone 634-2261 - Employees 142 - Quarry and plant two miles northwest of Clarkdale - 630,000 TPY - Cement used for building industry - Marketed in Arizona, New Mexico and Utah.

Plant Manager..... Ralph Frank
Quarry Manager John G. Leibert
Maintenance Manager Joe D'Avignon
Controller Richard Huffman
Chief Chemist Lee Gorby
Production Manager..... Cliff Ayres
Process Engineer Tom Gibbons

PINAL GYPSUM CORP.

White Cross Mine T7S R17E Sec. 31
P.O. Box 99, Coolidge 85228 - Phone 723-3131 - Employees 12 - Quarry four miles north of Mammoth - Used for agricultural gypsum.

President..... Orin Benton
Vice President James Lewis

RAMHED MINING CO.

Bagdad Pumice Mine T14.5N R8W Sec. 30
101 E. Country Club Drive, Phoenix 85014 - Phone 277-

P.O. Box M, San Manuel 85631 - Phone 385-3100 - Employees 3800 - Underground copper-molybdenum mine - In situ leaching solvent extraction-electrowinning plant - 62,000 TPD concentrator - 800,000 TPD smelter with 2,000 TPD acid plant - Electrolytic refinery and rod plant.

Manager, Mining..... H.W. Seaney
General Plant Superintendent..... Kay D. Parks
Director, Metallurgical Labs..... S.K. Young
Manager, Engineering &
Technical Services..... J.R. Tinnin
Manager, Purchasing..... Fred Hays
Director Employee Relations..... R. Skiba

Pinto Valley Division T1N R16E Sec. 19, 20 & 29
P.O. Box 100, Miami 85539 - Phone 425-7611 - Employees 595 - Open pit copper-molybdenum mine - 60,000 TPD concentrator - Dump leach solvent extraction-electrowinning plant.

Vice President Mining Operations .. W. Glenn Martin
General Superintendent..... W.G. Slack
Mine Superintendent..... D.L. Goar
Concentrator Superintendent..... Loren Hallin
Leaching Superintendent..... J.R. Sosh
Manager, Employment..... D.D. Rickabaugh
Manager, Purchasing..... B.L. Beydler

MORTON SALT DIVISION
Morton Thiokol Inc.

Southwest Salt Mine T2N R1W Sec. 2
13000 W. Glendale Ave., Glendale 85307-2408 - Phone 247-3000 - Employees 25 - Solution mining via wells - Solar evaporation of brines - Produces salt for water softeners, domestic, agricultural and industrial use - Underground solution cavities are used for propane and butane storage.

Facility Manager..... Dan Border

NATIONAL GYPSUM COMPANY

Gold Bond Building Products Division
P.O. Box 20863, Phoenix 85036 - Phone 258-9321
Employees 100 - Wallboard plant.

Plant Manager..... Jim Phillips
Office Manager..... Mary James

Feldman Quarry T6S R16E Sec. 27
Star Route, Box 3990, Winkelman 85292 - Phone 357-7180 - Employees 13 - Open pit gypsum mine located 12 miles south of Winkelman - Gypsum used in plaster board.

Quarry Superintendent..... Jeff McChesney

NORD SIL-FLO CORP.

Chicago Pit T2S R12E Sec. 16
Box 127, Superior 85273 - Phone 689-5631 - Employees 5 - Plant at Superior on Silver King Mine Road - Open pit

perlite mine located two miles southwest of Superior - Major markets are in Louisiana, Illinois, Wyoming, Texas and Indiana - Filter aid used in filtering pharmaceuticals, chemicals, sugar, and beverages.

Plant Manager..... Louis R. Lucero

NOR-QUEST ARIZONA, INC.

Gladiator T10N R1W Sec. 2
P.O. Box 416, Crown King 86343 - Phone 776-3485 - Employees 53 - Located 25 miles south of Prescott - Underground gold mine - Operating 100 TPD gravity and flotation mill.

Mine Manager..... George E. Holmes

PBR MINERALS, INC.

Contention Mine T20S R22E Sec. 11
905 Skyline Drive, Tombstone 85638 - Phone 457-2282 - Employees 40 - Wash and cleanup of old silver and gold tailings (no additional cyanide).

Executive Vice President &
Manager of Operations..... John H. Schissler

PAUL LIME DIVISION
Can-Am Corporation

Tucson Office
2818 Weymouth Circle, Tucson 85716 - Phone 325-1501
District Supervisor..... John Reaney

Paul Lime Quarry and Plant T24S R26E Sec. 7
Drawer T, Douglas 85608 - Phone 364-2429 - Employees 60 - Quarry and plant located at Paul Spur - 3 lime kilns - 1000 tons per day capacity - Lime used in copper processing plant, electric utilities, waste water treatment, and highway repairs.

Corporate Controller..... Keith R. Keime
Operations Manager..... Glenn House
Purchasing Agent..... Jim Olander

PEABODY COAL COMPANY

Flagstaff Office
1300 S. Yale, Flagstaff 86001 - Phone 774-5253

President..... K.R. Moore
Director of Operations..... Sil Perla
Director of Human Resources..... L.W. Bennett
Director of Engineering..... Frank Farnsworth
Division Materials Manager..... Merle Hendricks
Controller..... Rich Armstrong

Black Mesa Mine T35N R18E Sec. 5
P.O. Box 605, Kayenta 86033 - Phone 677-5240 - Employees 366 - Surface coal mine - Located approximately 30 miles southwest of Kayenta.

Mine Superintendent..... Lewis Allan Gough
Assistant Superintendent..... Lee Quarcelino

Employees 510 - Open pit copper-molybdenum mine - 54,000 TPD concentrator - Dump leach-solvent extraction-electrowinning plant.

Vice President & Gen. Manager..... W.J. Lampard
Manager, Administration..... R.J. Cunningham
Manager, Mining..... Harry Cosner
Manager, Plant Operations..... B.K. Mortensen
Manager, Community Services..... D.L. Mead
Manager, Human Resources..... C.G. Rising

Cyprus Casa Grande T10S R4E Sec. 25
P.O. Box C-9, Casa Grande 85222 - Phone 836-2994 - 2141
Employees 39 - In situ leach copper mine - Solvent-extraction-electrowinning plant - Located 32 miles south of Casa Grande.

Manager..... Ron Kellner
Plant Superintendent..... John Kline
Mine Superintendent..... Kermit Behnke
Chief Metallurgist..... Troy Pool
Administrative Supervisor..... Joe Smith

Cyprus Mineral Park T23N R17W Sec. 19
P.O. Box 6249, Kingman 86401 - Phone 565-2226 - Employees 9 - Open pit copper-molybdenum mine & 15,000 TPD concentrator on standby - Dump leach precipitation plant operating - Located 16 miles north of Kingman.

Resident Manager..... P.K. Med

Cyprus Sierrita T18S R12E Sec. 7, 8, 9, 16 & 17
P.O. Box 527, Green Valley 85622 - Phone 791-2950 and 625-4800 - Employees 800 - Sierrita open pit copper-molybdenum mine - 1,000 TPD concentrator - The inactive Esperanza open pit - 17,500 TPD concentrator - Ferromolybdenum plant - Rhenium plant - Dump leach cementation plant - Solvent extraction-electrowinning plant - Located 32 miles south of Tucson.

Vice President & Gen. Manager..... C.W. Reno
Manager, Administration..... L.A. Shonk
Manager, Mining..... W.A. Gibson
Manager, Copper Milling..... S.R. Stine
Manager, Molybdenum Milling..... Michael Fraser
Manager of Human Resources..... A.J. Murray

DUNBAR STONE COMPANY

Dunbar Stone Plant Quarries T21N R2W Sec. 3
P.O. Box 246, Ash Fork 86320 - 901 Lewis - Phone 637-2592 - Employees 31 - Quarries in Coconino, Maricopa, Mohave, and Yavapai Counties - Flagstone, marble and schist - Stone processing plant in Ashfork - Marketed in and out of state.

President..... G.E. Dunbar
Vice President..... W.B. Dunbar
Maintenance Superintendent..... Ron Dunbar

ECHO BAY MINES, INC.

Congress Mine T10N R6W Sec. 23
P.O. Box 361, Congress 85332 - Phone 427-3633 - Employees 50 - Located 16 miles northwest of Wickenburg - Underground gold mine - Flotation mill - Under development - Production anticipated Fall 1988.

Project Superintendent..... Bob Purcell
Project Supervisor..... Vanner Heggblom
Project Engineer..... Nigel Bain
Project Geologist..... Ralph Rupp

ENERGY FUELS NUCLEAR INC.

P.O. Box 36, Fredonia 86022 - Phone 643-7321

Manager Mining Operations..... Roger Smith

Pigeon T38N R2W Sec. 5
Employees 40 - Located 20 miles south of Fredonia - Underground uranium mine - Direct shipping ore - Mill in Blanding, Utah.

Mine Superintendent..... Dave Lipkowitz

Kanab North T38N R3W Sec. 17
Employees 35 - Located 25 miles southwest of Fredonia - Underground uranium mine - Direct shipping ore - Mill in Blanding, Utah.

Mine Superintendent..... Dan Thebeau

Pine Nut T36N R4W Sec. 21
Employees 30 - Located 45 miles SW of Fredonia - Underground uranium mine - Under full time development - Production anticipated 1989.

Mine Superintendent..... John Stubblefield

Hermit T38N R4W Sec. 17
Employees 10 - Located 30 miles southwest of Fredonia - Underground uranium mine - Under full time development - Production anticipated 1990.

Mine Superintendent..... Glen Sykes

Canyon T29N R3E Sec. 20
Located 45 miles north of Williams - Underground uranium mine - Under full time development.

Mine Superintendent..... Mark Chalmers

FLAGSTAFF CINDER SALES, INC.

Wildcat Hill Pit T21N R8E Sec. 9
P.O. Box 2796, E. Old Highway 66, Flagstaff 86003 - Phone 526-0801 - Employees 12 - Located 5 miles northeast of Flagstaff - Cinder quarry - Aggregate, landscaping.

President..... Bob Olivier
Manager..... Ron Olivier



Photo: courtesy Arizona Department of Mineral Resources

GSA RESOURCES, INC.

P.O. Box 16509, Cortaro 85652 - Phone 297-4330.

President Ted H. Eyde
 Vice President Daniel T. Eyde

Lyles Mine T13N R6W Sec. 11, 12
 Open pit clay mine located west of Kirkland - Crude clay used as feedstock for out of state plants.

Grace Chabazite Mine T12S R29E Sec. 1, 2 & 12
 Open pit mine located 13 miles north of Bowie - Crude chabazite used for cation exchange media and specialty adsorbants - Shipped out-of-state for further processing.

GILA VALLEY BLOCK, INC.

Pumice #2 T6S R29E Sec. 28
 P.O. Box 465, Safford 85546 - Phone 428-2360 - Employees 2 - Located 25 miles east of Safford - Pumice and cinder quarry - Used for lightweight masonry.

President Richard Solomon
 General Manager Randy Blendu
 Quarry Foreman Joe Cueto

HARBORLITE INC.

Superior Perlite T2S R12E Sec. 9
 P.O. Box 960, Superior 85273 - Phone 689-5723 - Employees 7 - Plant located 2 miles west of Superior on

Silver King Mine Road - Perlite from open pit mines - Markets in California, Michigan and Wyoming - Used in filtering for pharmaceuticals, chemicals, sugar and beverages - Also used as agricultural fertilizer carrier.

Plant Manager Bill Smith

HARLEY GRAY STONE COMPANY

Flagstone Quarries

P.O. Box 323, Paulden 86334 - Phone 636-2436 (Prescott 445-8253) - Employees 7 - Quarries located 8 miles northeast of Drake - Flagstone, cut stone - Marketed locally, in California and Hawaii.

Owner Harley Gray
 Owner Carl Gray

HARSHAW-FILTROL CORP.
 Subsidiary of Kaiser Chemical

Cheto No. 2 T21N R29E Sec. 23
 Box 155, Sanders 86512 - Phone 688-2785 - Employees 7 - Located 6 miles southeast of Sanders - Surface strip bentonite mine - Main use is in filter industry, also used in agriculture - Shipped overseas and to Mississippi.

General Superintendent Gary McDonald

HUDMAN STONE

M C Canyon Quarries T19N R1E Sec. 23

9640 W. Picture Rocks Road, Tucson 85743 - Phone 622-6008 - Employees 10 - Quarries located 8 miles northeast of Drake - Flagstone for decorative use - River run and surface flagstone for building use.

General Manager Roger Hudman

INSPIRATION CONSOLIDATED COPPER COMPANY

Inspiration Operations

Plants and Smelters TIN R15E Sec. 19 & 20

Pits and Dumps TIN R14E Sec. 24, 25, 26 & 35

P.O. Box 1559, Claypool 85532 - Phone 473-7150 - Employees 900 - Three open pit copper mines and 24,000 TPD concentrator which are inactive - Ferric-cure dump leach - Solvent extraction-electrowinning plant - 120,000 TPY smelter - Acid plant - Electrolytic refinery - 100,000 TPY continuous rod plant.

Chairman of the Board John Ellis
 President Jake Timmers
 Vice President & General Manager Robert A. Prescott
 Vice President, Finance Robert F. Morison
 Manager, Metallurgical Services Al Tittes
 Manager, Mining Operations Don Prahl
 Manager, Smelter Operations Kenneth Larson
 Controller Joe Bost
 Manager, Engineering Services Noel Gillespie
 Manager, Metallurgical Operations . Howard Bardwell
 Supt. Leaching Operations Gerald F. Fountain
 Supt. Tankhouse James Garvey Sr.
 Project Manager Charles Orsen
 Maintenance Superintendent John C. Lorenzen
 Rod Plant Superintendent Luis Constandse
 Supt. Mine Engr. & Geology Tom Couzens
 Chief Mine Planning Engineer Gary LaChapelle
 Group Environmental Manager Tom Larsen
 Director, Personnel Services Dick Horton
 Chief of Security George Snyder
 Director, Purchasing Hugo Schriewer

KOCIDE CHEMICAL

Van Dyke Mine TIN R15E Sec. 30
 P.O. Drawer D, Miami 85502 - Phone 473-2421 - Employees 16 - In situ leach and cement copper plant under construction - Production 600,000 pounds of contained copper per month in cement copper to be further refined at Casa Grande plant to produce CuSO₄ - Production expected to start in June 1988.

General Manager James "Mack" Johnson
 Assistant Manager Clyde Caviness
 Office Manager Ruth Joplin

LITTLE HILL MINES, INC.

Gold Hill Mine T10S R15E Sec. 5
 P.O. Box 332, Oracle 85623 - Phone 896-2245 - Employees 9 - Open pit mine - Located 6 miles southwest of Oracle - Copper bearing silica flux for copper smelter.

President Dave McGee

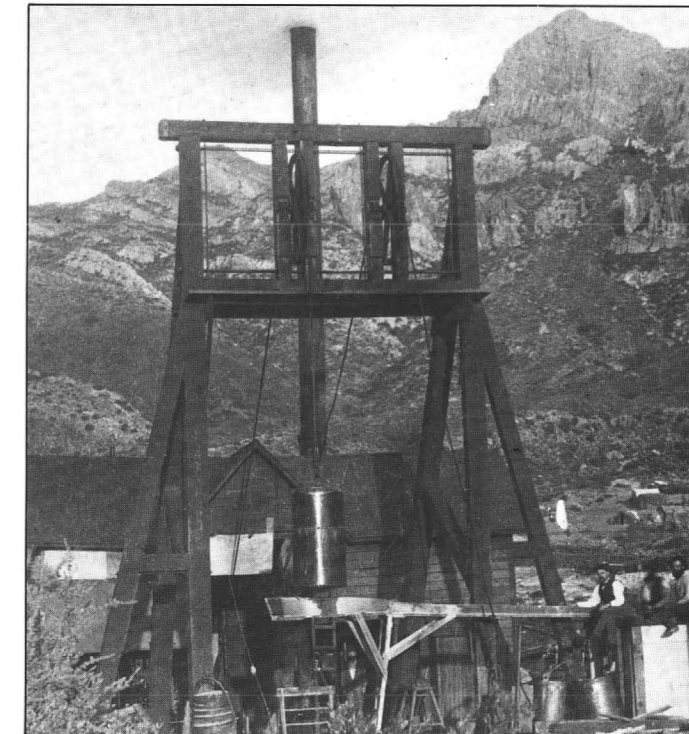


Photo: courtesy Arizona Department of Mineral Resources

General Superintendent Art Coughanour

McFARLAND & HULLINGER

Tiger Mine T8S R16E Sec. 26
 P.O. Box 811, Tucson 85702 - Phone 790-2408 - Employees 3 - Silica tailings for ASARCO smelter at Hayden.

General Manager Gary McFarland

McKUSICK MOSAIC

Weary Mine T1S R15E Sec. 22
 Route 1, Box 35-D, Globe 85501 - Phone 425-5051 or 425-8428 - Employees 4 - Surface clay mine located 5 miles south of Globe - Tile and wind chime clay, cosmetic additives, sealant, and slip glazing material.

Owners Robert & Charmion McKusick

MAGMA COPPER COMPANY

Corporate Responsibilities
 P.O. Box M, San Manuel 85631 - Phone 385-3100

Chairman of the Board (New York) Donald J. Donahue
 President Brian R. Woolfe
 Vice President Mining Operations .. W. Glenn Martin
 Vice President Projects & Plant Tom E. Hearon
 Vice President Corporate Planning John W. Goss
 Controller Bob Lemons
 Treasurer Bill Diggin
 Corporate Director Personnel Marsh Campbell
 Corporate Dir. Environmental Affairs.. Eldon Helmer

San Manuel Division Mine Concentrator, Smelter etc. T8S R16E Sec. 34, 35
 T9S R17E Sec. 32