

GREAT NEWS[®]

GREAT PLANES MODEL DISTRIBUTORS

RADIO CONTROL • DECEMBER 2011

EVADER[™] BRUSHLESS



PLUS:

Nine Eagles[™]

Pages 4–5

**Last Month for
Futaba[®] Free Receiver**

Page 70

Great R/C Gifts

Page 73

 **Duratrax[®].com**
Pages 2–3

Look for the
Best of 2011

Pages 27–68

 **GREAT PLANES[®]**
MODEL DISTRIBUTORS

GREAT NEWS[®]

GREAT PLANES MODEL DISTRIBUTORS

GENERAL HOBBY • DECEMBER 2011



Santa's Flyer Christmas Set
Page 16



PLUS:

Lionel[®] Train Sets

Pages 15-16

Revell[®] New Rack System

Page 17

Inexpensive Gift Ideas

Page 33

Look for the
Best of 2011

Pages 18-32



GREAT PLANES[®]
MODEL DISTRIBUTORS

EVADER™ BRUSHLESS

Ready-to-Run 1/10 Scale EP 2WD

Brushless powered, for non-stop, high-speed action.

The radio is a 2.4GHz system made by Futaba®, and the receiver is compatible with Futaba FHSS surface systems. The power system boasts a brushless ESC and 3930kV motor, for blistering speeds and hotter action than ever before.

And those are just a few of the highlights, because this Evader also includes waterproof electronics, full ball bearings and a factory-installed wheelie bar. It's ready for action right out of the box, but it's also compatible with virtually all Evader upgrades!



Battery not included.



2.4GHz
radio system

- Duratrax 2.4GHz FHSS radio system by Futaba®
- 3930kV sensorless brushless motor
- 100A waterproof brushless ESC
- Painted, finished polycarbonate body
- Factory-installed wheelie bar
- Metal transmission gears
- Dual-pad slipper clutch
- Full set of ball bearings
- Compatible with 2S LiPo packs
- MagnaFlex™ plastic components

DTXD37** Evader Brushless 1/10 2WD EP 2.4GHz RTR
 DTXD37BB Evader Brushless 1/10 2WD EP 2.4GHz RTR-Blue
 DTXD37LL Evader Brushless 1/10 2WD EP 2.4GHz RTR-Black
 DTXD37RR Evader Brushless 1/10 2WD EP 2.4GHz RTR-Red
 DTXD37YY Evader Brushless 1/10 2WD EP 2.4GHz RTR-Yellow

Length: 18.5 in (470 mm)
 Width: 12.8 in (325 mm)
 Height: 6.1 in (155 mm)
 Weight: 3.6 lb (1633 g)





HELIS READY FOR FLYING FUN

Any heli pilot will tell you: "in the air" is where the fun is — and Nine Eagles designs all its Ready-To-Fly helis to get you there FAST!

All Nine Eagles models come factory-assembled with everything you need to fly. And you'll discover quality extras too, such as a feature-packed 2.4GHz radio, a beginner-friendly flybar design and an included LiPo battery. And all Nine Eagles helis are priced to be as affordable as they are enjoyable!



- Counter-rotating twin blades and two main motors for stable flight and confident hovering
- Ideal for indoors — any room can become a flying site!

NEAE0001 Draco CX 2.4GHz EP Nano Heli RTF

Rotor Diameter: 7-3/8 in (188 mm)

Overall Length: 8-3/8 in (213 mm)

RTFWeight: 0.95 oz (27 g)



You'll find these advantages on all Nine Eagles helis!

- Compact nano size
- Pre-assembled, flight-tested and ready to fly right out of the box
- 45° offset flybar setup that allows modelers of all skill levels to enjoy successful flights
- 4-channel 2.4GHz radio system for carefree control
- Flight times of 10 minutes or more
- Nothing else to buy — you get an assembled heli, 2.4GHz radio w/built-in charger, 1S LiPo battery pack, 4 "AA" batteries and screwdriver



The Nine Eagles transmitter has features not usually found on controllers for nano-size helis, including:

WHENEVER YOU ARE!



Nine Eagles™

Ready to Fly...FAST!



- A fixed-pitch head and motor-driven tail deliver exceptional response
- Designed for flying fun both indoors and out!

NEAE0020 Solo Pro V FP 2.4GHz EP Nano Heli RTF
 Rotor Diameter: 7-1/2 in (190 mm)
 Overall Length: 8-1/8 in (207 mm)
 RTF Weight: 0.95 oz (27 g)



- 2.4GHz technology
- Dual rates
- Built-in battery charger
- Digital trims
- LCD screen

From the Experts:

Nine Eagles has done its homework, so you can have more fun flying your compact, lightweight heli! Because Nine Eagles machines share many features, you know exactly what you're getting: durable models with quality electronics that deliver excellent flying performance. The lineup of Nine Eagles designs continues to expand, and they're all economically priced!

Long story short...

Nine Eagles proves that nano-sized helis don't have to be expensive to be well-made and easy to fly.

FLY IN HIGH STYLE — WITH LITTLE

www.gpdealer.com



- **100% complete and Ready To Fly — even the batteries and charger are included**
- **A 2.4GHz radio and brushless power system are already installed**
- **The tricycle landing gear features a shock-absorbing, steerable nosewheel**
- **Authentic trim and a detailed interior are among the many scale touches found on this model**
- **Bright LED navigation and landing lights top off the Cessna design, adding realism by day and visibility at dusk**



Enjoy scale-like flight performance and the ability to slow for landings using the included flaps.

Cessna 350, Corvalis, emblems, logos and body designs are trademarks of Textron Innovations Inc. and are used under license by Hobbico®, Inc.

EFFORT



CESSNA

CORVALIS

fly in high style



SLTTM
SECURE LINK TECHNOLOGY

The Tactic 2.4GHz radio offers all these advantages:

- Dual rates to match servo throws to your comfort level
- Digital* trims and servo reversing
- Wireless trainer feature
- Six channels allow this system to "grow" with you, and this radio can be used with future models

*on elevator, ailerons and rudder

HCAA2533 Select Scale Cessna 350 Corvalis RTF
Wingspan: 57 in (1450 mm)
Length: 38 in (965 mm)
RTF Weight: 2.25 lb (1020 g)

FlyzoneTM

From the Experts:

A plane this good-looking would lead you to believe that a lot of time and effort is required to have it flight-ready. But assembly of this Corvalis is so fast and simple, it practically falls together; all that's needed are a Phillips screwdriver and pliers. Everything else is included, and the components are top-notch...that's part of the beauty of Select Scale!

Long story short...

The Cessna 350 Corvalis' blend of speed, comfort, good looks and advanced technology give this RTF phenomenal pilot appeal.



BASHIN' AT ITS BEST —

ARRMA's aggressive approach to R&D really shows up in the Vortex and Granite!

All ARRMA models feature the finest quality materials, a streamlined, "modular" chassis and extensive parts compatibility...and nowhere is that more evident than these off-road brutes! Both the Vortex stadium truck and Granite monster truck are built to take whatever you can throw at them — and to prove it, they're backed by ARRMA's iron-clad 2-year warranty, along with superior customer support and a total commitment to keeping costs down. With more metal, more durability and a value price, ARRMA trucks are the most fun for the money!



GRANITE

ARAC2301 Granite 1/10 2WD EP Monster Truck 2.4GHz RTR-Blue
 ARAC2311 Granite 1/10 2WD EP Monster Truck 2.4GHz RTR-Green
 ARAC2321 Granite 1/10 2WD EP Monster Truck 2.4GHz RTR-Red
Length: 16.5 in (420 mm)
Front Track: 13.4 in (340 mm)
Rear Track: 13.1 in (334 mm)
Height: 7.9 in (200 mm)
Wheelbase: 11 in (280 mm)
Tires: dBoots Copperhead off-road tires

Standard on all ARRMA vehicles



ARRMA

CONTROL

— QUALITY, VALUE, FUN!

www.gpdealer.com



ARAC2201 Vortex 1/10 2WD EP Stadium Truck 2.4GHz RTR-Orange
 ARAC2211 Vortex 1/10 2WD EP Stadium Truck 2.4GHz RTR-Blue
 ARAC2221 Vortex 1/10 2WD EP Stadium Truck 2.4GHz RTR-Red
Length: 16.7 in (425 mm)
Front Track: 12.8 in (324 mm)
Rear Track: 12.5 in (318 mm)
Height: 6.3 in (160 mm)
Wheelbase: 11 in (280 mm)
Tires: dBoots Dirrunner off-road tires

VORTEX

All ARRMA vehicles share these quality features:

- Aluminum TVP chassis rails and chassis components
- Oil-filled gear diff and performance springs
- All metal gears
- Brushless-ready metal transmission
- Adjustable, precision slipper clutch
- Oil-filled metal gear diff
- Tough steel driveline and turnbuckles
- Splashproof, dustproof receiver box
- Easy-access underside battery bay
- Waterproof Mega ESC and 15T brushed motor
- ATX300 2.4GHz radio transmitter and receiver
- Hex hardware throughout
- Strong, stylish polycarbonate body

www.arrma-rc.com



No one else has the ATX300 adaptable radio!

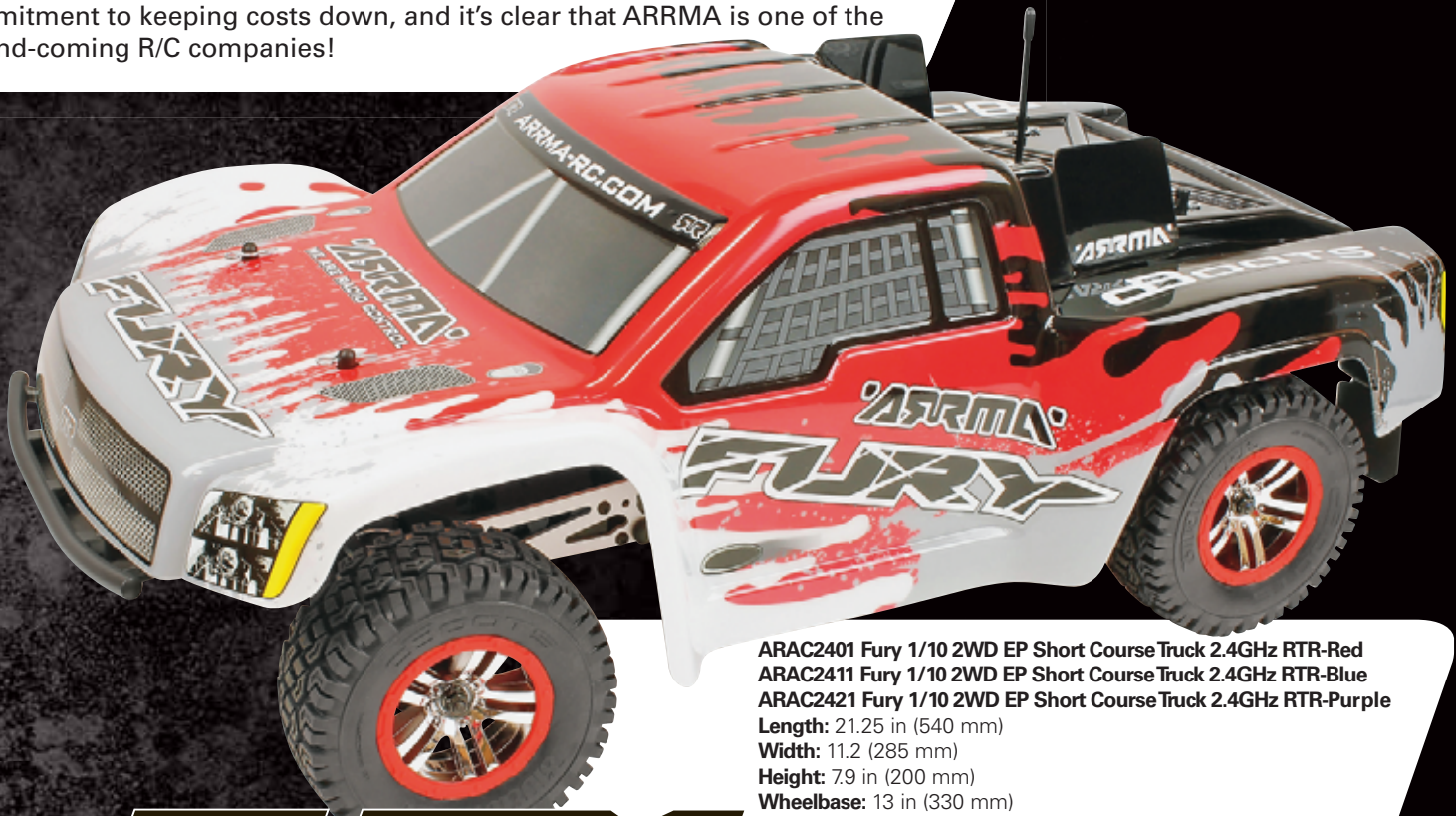
Just press a button, and you can switch the transmitter from left-handed to right-handed and back again. Anyone can hold the radio in the way that feels most comfortable — and only ARRMA has it!
 Design Patent No. 29/384,679



ARRMA'S PASSION FOR PERFECTION — YOUR BLUEPRINT FOR FUN!

The Fury illustrates ARRMA's commitment to quality and value.

ARRMA believes in keeping it simple. Like with the streamlined, "modular" chassis where every vehicle — including the Fury — shares many key features. ARRMA also believes in using only the finest materials, backing all products with an iron-clad 2-year warranty and offering 47% parts compatibility to keep aftermarket support simple. Combine all this with strong customer support and a total commitment to keeping costs down, and it's clear that ARRMA is one of the up-and-coming R/C companies!



ARAC2401 Fury 1/10 2WD EP Short Course Truck 2.4GHz RTR-Red
 ARAC2411 Fury 1/10 2WD EP Short Course Truck 2.4GHz RTR-Blue
 ARAC2421 Fury 1/10 2WD EP Short Course Truck 2.4GHz RTR-Purple
Length: 21.25 in (540 mm)
Width: 11.2 (285 mm)
Height: 7.9 in (200 mm)
Wheelbase: 13 in (330 mm)
Tires: dBoots Sidewinder off-road tires



All ARRMA vehicles share the same quality features — see pages 8-9 for a list!

Standard on all ARRMA vehicles

MY ARRMA ONLINE SUPPORT	RTR READY TO RUN	FACTORY ASSEMBLED	2 YEAR ARRMA WARRANTY
30+ mph	2.4 GHz	WATER PROOF	LIPO POWER READY!
		BRUSHLESS READY!	



ASSOCIATED RC8.2e FACTORY TEAM 1/8 ELECTRIC 4WD BUGGY KIT

It's the RC8.2 reborn — as a super-quick electric!

- The RC8.2e starts with the Factory Team +3 mm 7075 hard anodized chassis that sheds overall weight by more than half an ounce
- Lengthening the chassis by 3 mm optimizes weight distribution and overall handling
- Newly designed suspension arms feature centerline shock mounts and improved anti-roll bar position
- 16 mm Big Bore hard-anodized threaded shocks increase traction and help keep the rubber on the ground
- Topped off by a JConcepts Punisher body with Illuzion wing



ASCC0604 RC8.2e Factory Team 1/8 Electric 4WD Buggy Kit

Length: 18.5 in (470 mm)

Width: 12 in (305 mm)

Weight: 7.87 lb (3570 g)

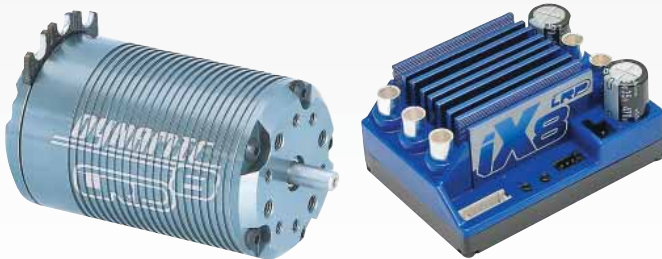
Wheelbase: 12.7 in (323 mm)

TQ

TQ'd and won the 2011 Sidewinder Explosion with Ryan Cavalieri!



Power up your RC8.2e with hot hop-ups from LRP and Reedy!



LRP iX8/Dynamic 8 1800kV Brushless Combo

- Developed to handle the higher voltage demands of 1/8 vehicles
- The versatile iX8 ESC offers a wide input voltage range, with a powerful 6A switching BEC
- The Dynamic 8's XTEC B8 housing is machined from solid aluminum; the Cool Temp motor design keeps running temperatures lower

ASCC8787



Reedy 14.8V 60C 5500mAh Competition LiPo Battery

- Combines maximum power with high capacity, in a protective molded hard case

ASCC1626



Long story short...

With its winning Factory Team pedigree, the RC8.2e is the Next Big Thing in a 1/8 scale 4WD competition electric buggy!

ASSOCIATED SC10 &

www.gpdealer.com

It's the original short course racing champ, with battery and charger included!

- The SC10 RTR is built on the race-proven RC10T4 platform, with bodies that make them ringers for full-size Lucas Oil Racing Series competitors
- Value-adding equipment includes a 17T Reedy motor, ESC with optional LiPo low-voltage cutoff and an XP2 radio
- Aggressive tread multi-terrain tires and short course-style wheels combine form and function
- Adding the NiMH battery and charger means all-in-one convenience!

Official R/C Car



SC10
SHORT COURSE



Reedy Wolfpack 3000mAh NiMH Battery



AC Overnight Wall Charger



ASCD30** SC10 RTR-KMC Wheels

The SC10 RTR Combo is also available with bodies sporting these trim schemes:



ASCD7029 SC10 RTR Combo-Team Associated



ASCD7032 SC10 RTR Combo-ReadyLift

SC10RS RTR COMBOS

NEW PRODUCT

www.gpdealer.com

Top-notch trucks, complete with Reedy LiPo battery and charger!

- These combos feature Associated's SC10RS (Race-Spec) RTR replicas of full-size Short Course trucks driven in the Lucas Oil Off Road Racing Series
- Comes with quality electronics such as a water-resistant XP SC700 brushless ESC and XP3-SS 3-channel 2.4GHz radio system
- Performance perks include blue anodized aluminum V2 coil-over shocks, sealed gear diff and KMC replica hex-drive wheels mounted on high-traction JConcepts racing rear tires
- The powerful Reedy Wolfpack LiPo battery delivers plenty of torque and speed, and the 526-S Balance charger keeps power and capacity levels high



SC10RS

SHORT COURSE-RACE SPEC



Reedy Wolfpack 3000mAh LiPo Battery



Reedy 526-S AC/DC 2S-6S Cell LiPo/LiFe Balance Charger



ASCC7050 SC10RS RTR-Lucas Oil

The SC10RS RTR Combo is also available with these licensed bodies:



ASCD7047 SC10RS RTR Combo-Monster Energy



ASCD7048 SC10RS RTR Combo-Pro Comp



ASCD7049 SC10RS RTR Combo-Rockstar/Makita



Long story short...

Adding quality components to best-selling SC trucks makes these combos unbeatable for performance and convenience!

AXIAL[®] EXO[™] TERRA BUGGY

It's the "super machine" of all-terrain vehicles!

- The durable 4 mm center chassis is made of 6061 aluminum, and features pockets that lower the center of gravity
- Threaded shock bodies, multiple shock positions and adjustable toe, kickup, camber, roll center and Ackerman offer the ultimate in fine tuning
- The patent pending adjustable motor mount is a two-piece design that lets you easily set your gear mesh with an adjustment screw
- Three oil-filled gear diffs transfer power to all four wheels, and are designed to use compact bulkheads that reduce overall weight
- The stub axles are held in place by two bearings, and the steering pins are coated in titanium nitride for increased durability



The tub chassis is tapered to provide an extra 1/2" of ground clearance. Realistic, officially licensed Hankook Dynapro MT tires perform as well as they look, and they are reinforced with internal ribbing. Officially licensed 2.2/3.0 Raceline Renegade wheels give the EXO authentic racing looks.



The front and rear bumpers are hinged, so as to flex upon impact; aluminum skid plate inserts add an extra level of crash protection. The molded roll cage resembles what you would find on 1:1 vehicles, and an integrated light bar on top holds up to five LED lights* for nighttime driving!

*LED lights not included.



The built-in rear diffuser/wing has embedded rear marker light buckets* for up to four LED tail lights.

*LED lights not included.



The patent pending Quick Release Battery Mount adjusts easily to fit any size pack. Rubber straps are connected to a hinge on one end, while a pin on the other end keys into a latch to keep the battery securely in place. A "lift assist" mechanism puts the battery in the best position for removal.



AXIC9015 1/10 EXO Terra Buggy 4WD Kit

- Length:** 19.3 in (490 mm)
- Width:** 11.2 in (285 mm)
- Height:** 6.75 in (171.5 mm)
- Wheelbase:** 13.2 in (334 mm)
- Max. Ground Clearance:** 2 in (50 mm)
- Weight:** 4.5 lb (2.03 kg)

Long story short...

The EXO Terra Buggy comes equipped with everything an off-road enthusiast could ask for!



HPI WHEELY KING 4X4 EP 2.4GHZ RTR

This 4WD fun machine will have you saying "It's good to be the King!"



- Custom-tuned weight distribution and a rear wheelie bar make easy, controlled wheelies part of the action any time you want
- The Twin Vertical Plate (TVP) chassis features a super-cool tube design just like you'd find on full-size monster trucks
- 6" of suspension travel soak up the most treacherous terrain
- A 2.4GHz radio offers care-free control; waterproof electronics let you go through rain, snow and mud
- Shows as well as it goes, with a painted, detailed body and gleaming chrome wheels that set off the 5.4" MudThrasher all-terrain tires

HPID0973 Wheely King 4x4 EP 2.4GHz RTR

Length: 17 in (432 mm)

Width: 11.7 in (297 mm)

Height: 10 in (254 mm)

Wheelbase: 9.4 in (239 mm)



Long story short...

Street cruiser, off-roader, rock-crawler, wheelie puller...the Wheely King 4x4 does it all!

HPI 1/8 SCALE D8S 4WD NITRO BUGGY RTR

A World Champion pedigree in a Ready-To-Run package!

www.gpdealer.com



- A powerful, pull-start F3.5 racing engine — just like the one found in Savage monster trucks and Trophy buggy kits — delivers plenty of big torque and top speeds
- Enjoy pure driving feel and total adjustability with the advanced suspension
- “Point-and-shoot” steering guides you confidently through the pack during the race
- At 16 mm across, the HB D8 Big Bore shocks are massive — and designed to offer the performance you’d expect from a top-level competition kit
- Three oil-filled gear diffs, full-time shaft 4WD and steel driveshafts and axles comprise the highly efficient drivetrain

HPID0916 1/8 Scale D8S 4WD Nitro Buggy RTR

Length: 19.7 in (500 mm)

Width: 12 in (305 mm)

Height: 7 in (179 mm)

Adjustable Wheelbase: 12.6 in (320 mm)



Long story short...

Race-winning HB D8 engineering gives this buggy its bite — and it's ready to get you into nitro racing right out of the box!

NEW PRODUCT

RULE THE SKIES WITH THE BENT-WING WARRIOR!

www.gpdealer.com



F4U CORSAIR

Almost-Ready-to-Fly .60 size Warbird



Pilot figure shown is not included.

- Assembles quickly using painted fiberglass parts and built-up balsa/ply sections covered in flat-finish MonoKote®
- The gull wing arrives with ailerons and functional, multi-section flaps built-in and pre-hinged
- Scale realism is enhanced by recessed gauges on the instrument panel, hidden rudder and elevator linkages and a replica radial engine with pushrod detail
- Fixed landing gear is included; Robart® pneumatic landing gear (ROBQ1815) is available separately that retracts flush inside the wing for scale-like looks and flight performance

TOPA0951 Gold Edition F4U Corsair .60 ARF

Wingspan: 62.5 in (1590 mm)

Length: 50.5 in (1285 mm)

Weight: 8.5-9.5 lb (3.85-4.3 kg)



From the Experts:

During WWII, the F4U Corsair's aerial combat record was a very impressive 11-to-1 ratio of enemy planes shot down for every Corsair lost — and you'll enjoy that same kind of winning performance with Top Flite's .60-size F4U Corsair ARF Gold Edition quality is evident throughout, especially in the gull wing, which was painstakingly engineered to achieve the proper look and function.

Long story short...

No other ARF model captures the distinctive look and scale performance of the F4U Corsair as well as Top Flite has with this .60-sized warbird!



TWO MORE RACE-WINNING TIRE CHOICES FROM



Equalizer & Persuader 1/8 Scale Buggy Tires

- A small knob/pin design gives the Equalizer gripping power on looser tracks
- The Persuader's shallower tread makes it ideal for indoor racing or smooth, hard-packed tracks outside
- Available in soft C2 or super-soft C3 compound, both unmounted and mounted on white or yellow wheels
- Performance Tire perks are still here, including exceptional durability, foam inserts and color-coded sidewall markings

- DTXC3644 Equalizer Buggy Tire C2 Mounted White (2)
- DTXC3645 Equalizer Buggy Tire C3 Mounted White (2)
- DTXC3647 Equalizer Buggy Tire C2 Mounted Yellow (2)
- DTXC3648 Equalizer Buggy Tire C3 Mounted Yellow (2)
- DTXC3650 Persuader Buggy Tire C2 Mounted White (2)
- DTXC3651 Persuader Buggy Tire C3 Mounted White (2)
- DTXC3653 Persuader Buggy Tire C2 Mounted Yellow (2)
- DTXC3654 Persuader Buggy Tire C3 Mounted Yellow (2)
- DTXC3744 Equalizer Buggy Tire C2 (2)
- DTXC3745 Equalizer Buggy Tire C3 (2)
- DTXC3750 Persuader Buggy Tire C2 (2)
- DTXC3751 Persuader Buggy Tire C3 (2)

See the complete line of Duratrax Performance Tires at duratrax.com!

Long story short...

Equalizer and Persuader tires continue the Duratrax legacy as the brand that delivers superior performance at a value-packed price

WHEEL NUTS — EVERY BIT AS GOOD AS DURATRAX TIRES!



1/8 Scale Wheel Nuts

- Knurling on the inside flange helps hold the nut tight to the wheel
- Closed to keep out dust, dirt and mud
- 12 mm inside diameter, in anodized black or blue with 1.0 or 1.25 mm pitch
- For quality and price, no other wheel nuts come close!

- DTXC3590 1/8 Wheel Nut M12 x 1.0 Black (4)
- DTXC3591 1/8 Wheel Nut M12 x 1.0 Blue (4)
- DTXC3594 1/8 Wheel Nut M12 x 1.25 Black (4)
- DTXC3595 1/8 Wheel Nut M12 x 1.25 Blue (4)

THE "NEW WAVE" KNOCKOUT!



- Ready to hit the water for high-speed thrills!
- An 1800kV outrunner brushless motor comes factory-installed, and is water-cooled for extra-efficient, high-speed operation
- The brushless 50A ESC is waterproof, LiPo-compatible, and features a stutter bump, low-voltage cutoff and a Deans® Ultra Plug® connector
- Features a unique "break-away" rudder system, which swings back upon impact to prevent hull damage
- The Tactic 2.4GHz radio with Secure Link Technology™ delivers reliable, interference-free control



Deans® and Ultra Plug® are registered trademarks of W.S. Deans Co. U.S. Patent No. 5,533,915

AQUB1810 Wildcat Brushless 2.4GHz RTR

Length: 26.5 in (673 mm)

Beam: 9 in (229 mm)

Weight: 32 oz (907 g)



From the Experts:

Unleash the brushless power of the Wildcat EP, and watch it pounce! The 1800kV outrunner motor delivers top speeds with a single 3-cell LiPo battery, and the included Tactic 2.4GHz radio provides precise, interference-free control. The decaled ABS hull will look sharp as it flies across the water, and if the rudder should hit something, it's designed to swing back upon impact to prevent damage!

Long story short...

Let the Wildcat EP loose on the water and you'll agree: this isn't some tame little cat!

FIXED-PITCH DESIGN... FIRST-CLASS CONTROL.



NOVUS™ FP N200

- Super-stable hovering and extra-agile, thanks to fixed-pitch design with 45° offset flybar system
- Value-added extras include a CNC-machined aluminum rotor head and swash plate, a colorful printed canopy, ball bearing-supported tail drive shaft, boom supports and pivoting main blades
- A shaft-driven, tail rotor is powered by a motor mounted on the main frame
- Just add "AA" cells to the transmitter, charge the included LiPo pack and fly!

HMXE0809 Novus 200 FP 2.4GHz RTF

Rotor Diameter: 15.3 in (390 mm)

Length: 16.5 in (420 mm)

RTFWeight: 5.8 oz (165 g)

Heli-Max®



**Complete and ready to fly —
includes everything you see here!**

- Assembled Novus 200 FP fixed-pitch heli
- 4-channel 2.4GHz radio system with dual rates
- 7.4V 1000mAh LiPo battery and balancing charger

From the Experts:

The Novus 200 FP is the largest Novus heli yet, with a unique fixed-pitch design. Control is far more responsive and stable than coaxial helis — even beginners can fly the Novus 200 FP with confidence. Plus, a 2.4GHz 4-channel radio with dual rates allows pilots to start out slow and "step up" to their full flight potential!

Long story short...

A 45° offset flybar set-up and fixed-pitch design combine to make the Novus 200 FP easy for all skill levels to enjoy!



THE ULTIMATE POWER PLANT FOR BIG MACHINES

105HZ & 105HZ-R Heli Engines

- Featuring the displacement of a 1.05 in the mounting space of a .90
- More displacement means more power, and these engines boost displacement by 15%!
- O.S. velocity stacks increase airflow and enhance engine performance
- Both engines run as strong, or stronger, on 15% fuel as .91-sized engines using 30% fuel — a significant savings in fuel costs
- An extra feature on the 105HZ-R is the pressurized DRS (Demand Regulator System), which ensures consistent fuel flow regardless of the heli's attitude



OSMG1960 105HZ Heli Engine



OSMG1961 105HZ-R Heli Engine w/DRS



Boost power and efficiency with the PowerBoost Pipe for 105HZ engines!
See page 26 for more info
OSMG2884 PowerBoost Pipe 105HZ



Displacement: 1.048 cu in (17.17 cc)
Bore: 1.142 in (29 mm)
Stroke: 1.024 in (26 mm)
Suggested RPM range: 2,000-16,500
Output: 3.7 ps @ 15,000 rpm
105HZ Weight: 21.03 oz (596 g)
105HZ-R Weight: 21.46 oz (608 g)

From the Experts:

These are the engines that precision aerobatic heli pilots have been waiting for! For 90-sized machines to nail pattern and unlimited maneuvers it's all about power. Both the 105HZ and 105HZ-R have it in spades. Displacement has been increased by 15%, while retaining famous O.S. quality, and they fit in a .90-sized mounting pattern.

Long story short...

Enjoy huge power and performance with the compact 105HZ and 105HZ-R!

SHOWCASE BUILDING MATERIALS WITH THIS FLEXIBLE RACK SYSTEM

Get building — with **ElectriFly®** Foam and Carbon Fiber

- Available merchandise assortments with an assortment of best-selling building materials
- The rack's steel exterior will last for years, and the adjustable slats are made of durable long lasting plastic
- Signs are included with the package deals for the front of the display, identifies product by SKU, description and bar code
- The versatile rack's shelves and dividers can be reconfigured to display other products as well



The Flexible Rack System is available with an assortment of Foam or Carbon Fiber building materials.

● Popular sizes of rods, tubes and strips
 ● Variety of diameters
 ● Use as reinforcement on R/C models, kit building and architectural projects
ElectriFly

See page 17 in GH Edition for Flexible Rack Systems with wood building materials, including Plywood/Birch, Balsa and Basswood!



Flexible Rack System w/Foam Building Materials Assortment
Flexible Rack System w/Carbon Fiber Building Materials Assortment

Long story short...

To get professional-looking results for your project, look for this rack with **ElectriFly Pro-Formance Foam and Carbon Fiber materials** at your local hobby shop.



GET OPTIMUM PERFORMANCE FROM YOUR ELECTRIC AIRCRAFT!

PowerMatch™ Power Meter w/Balancing

- Use the Power Checker mode to determine the power a flight system might need while in use and optimize the setup's efficiency
- A handy gauge in Battery Checker mode shows the power and voltage remaining for any battery
- Data can be stored for future reference
- A built-in balancer checks to see if all cells in a lithium pack are balanced and will balance if needed
- Includes genuine Deans® Ultra Plug® connectors on input and output

Deans® and Ultra Plug® are registered trademarks of W.S. Deans Co. U.S. Patent No. 5,533,915

GPMM3220 PowerMatch Power Meter w/Balancing



Long story short...

Whether on your workbench or at the flight line, the PowerMatch is the ideal accessory for getting the most out of your electric model.



FUTABA'S NEWEST TOP-OF-THE-LINE BRUSHLESS SERVOS

BLS171HV & BLS174HV Brushless S.Bus Programmable High-Torque Servos



FUTM0731 BLS171HV
Brushless S.Bus Programmable High-Torque Servo
Torque @ 7.4V: 164 oz-in
Speed @ 7.4V: .10 sec @ 60°
Dimensions: 1.57 x .79 x 1.37 in (40 x 20 x 35 mm)
Weight: 1.66 oz (47 g)

FUTM0734 BLS174HV Brushless S.Bus Programmable High-Torque Servo
Torque @ 7.4V: 133 oz-in
Speed @ 7.4V: .09 sec @ 60°
Dimensions: 1.87 x 1.06 x 1.0 in (48 x 27 x 26 mm)
Weight: 1.66 oz (47 g)

- High torque ratings make both of these servos ideal for airplane applications; the BLS174HV works particularly well with ailerons
- Both are water resistant, and feature dual ball bearings
- Brushless benefits include 30% faster response times, smoother operation, greater resistance to jolts and vibrations and exceptionally durable gear trains
- High Voltage engineering allows these servos to handle up to 7.4V, for more holding power and precision

Long story short...

The BLS171HV and BLS174HV are the best of ALL worlds: brushless, High Voltage, High-Torque AND S.Bus programmable!



WHEN ONLY THE BEST HARDWARE WILL DO...

Premium Screw Sets

- The super-durable screws in these assortments are made of highest-quality steel that is rust resistant
- All are metric sizes, with a hex head design
- The durable, clear plastic boxes feature removable dividers that let you customize the interior spaces
- Available in 130-piece assortments of Flat Head and Button Head screws, as well as a 70-piece Set Screw assortment — there's sure to be just the right size and style of screw you need!



TKPQ2000



TKPQ2005

TKPQ2000 Premium Flat Head Screw Set-130 pc.
 TKPQ2001 Premium Button Head Screw Set-130 pc.
 TKPQ2005 Premium Set Screw Set-70 pc.



Long story short...

The name "Premium" says it all with these screws — they're designed with the serious racer in mind!

A CONVENIENT WAY TO KEEP TABS ON YOUR BATTERY PACKS

BR-3000

Battery Checker

- Displays the voltage levels of battery packs
- Total voltage and remaining capacity are shown on a bar graph and as a percentage
- Can check 2-7 cell LiFe, LiPo and Li-Ion packs, as well as 4-7 cell NiCd and NiMH packs
- Voltage of each cell of a lithium battery pack can also be displayed



FUTM4166 BR-3000 Battery Checker



Long story short...

With its ability to accurately show battery voltage levels, the BR-3000 Battery Checker is a great "peace of mind" accessory.

Futaba® PS-01RS 1 Amp Voltage Regulator

Ideal for heli tail rotor servos using LiFe or LiPo batteries!

- Use standard voltage with LiPo receiver batteries
- Simply install between the receiver and servo — the PS-01RS does the rest
- Regulates battery voltage to 5V
- Compact in size: 0.95 x 0.31 x 0.33 in (24.2 x 7.8 x 8.3 mm) and light in weight: 0.18 oz (5.2 g)



FUTM0960
PS-01RS 1 Amp
Voltage Regulator

O.S.® Engine PowerBoost Pipes for 50/55 & 105HZ

Designed to subtract noise AND add power!

- Meets the demands of expert heli pilots needing a high-performance exhaust system for precision aerobatic machines
- Delivers peak exhaust efficiency while improving engine power
- These PowerBoost Pipes are engineered to be perfect partners for the O.S. 55 or 105HZ engines



OSMG2879
PowerBoost Pipe II 50/55



OSMG2884
PowerBoost Pipe 105HZ

Thunder Tiger® Flybarless Conversion Kits

Retrofit your Raptor or Titan X50 for flybarless flight!

- Get the ultimate performance from your Raptor or Titan X50
- Features precisely machined and molded metal parts for maximum rigidity and strength
- Kits include metal main rotor grips, longer metal control arms, 1-piece main rotor hub and enlarged titanium rod and ball linkage



TTRE7270
Flybarless Conversion
Kit-Titan X50

Also Available: **TTRE7271** Flybarless Conversion Kit-Raptor 30/50

Novak Eiger & Eiger Pro 2S/3S Crawler Brushed ESCs

No climb is too steep with Eiger ESCs!

- The compact Eiger is easier to use and more adjustable than any other ESC in its class
- Compatible with 2S LiPo packs, with a heavy-duty 2-amp BEC that will power high-torque single servos with ease
- The Eiger Pro ESC features a 3-amp BEC module and can handle a 20-turn motor or 3S with no problem
- Both come ready to crawl, but can be set for "basher" mode by simply turning off the Drag/Hill brakes

Also Available: **NOVM1836** Eiger Pro 2S/3S Crawler Brushed ESC/BEC



NOVM1835
Eiger 2S/3S Crawler
Brushed ESC

Novak Eiger Brushed Crawler ESC Combos with Terra Claw & Rock Star Motors

Affordable, unstoppable crawling combos!

- Featuring the compact, adjustable Eiger brushed ESC with powerful Novak motors
- The Eiger ESC/Terra Claw 55T motor combo is Novak's most affordable system for crawling and bashing fun
- Pairing the Eiger ESC with a 35T Rock Star motor offers faster speeds; the combo with the 55T Rock Star motor lets you enjoy longer crawling times
- A combo featuring the 45T Rock Star motor offers a great balance of speed and run times

Also Available:

NOVM3233 Eiger Brushed Crawler ESC & Rock Star Motor 35T

NOVM3234 Eiger Brushed Crawler ESC & Rock Star Motor 45T

NOVM3235 Eiger Brushed Crawler ESC & Rock Star Motor 55T



NOVM3230
Eiger Brushed Crawler ESC &
Terra Claw Motor 55T

READY TO WIN — RIGHT OUT OF THE BOX!

Phoenix STII 2.4GHz EP Stadium Truck RTR



www.gpdealer.com

- Completely assembled and available in six eye-catching color schemes
- Powered by a pre-installed 17T Super Sports motor and Ace Veloci-R ESC
- An Ace R/C Cougar PS3 3-channel 2.4GHz radio system delivers secure, precise control
- The front-end geometry has been optimized with re-designed steering blocks for improved Ackerman

TTRD76** Phoenix STII 2.4GHz EP Stadium Truck RTR

Length: 14.7 in (373 mm)

Width: 9.4 in (238 mm)

Wheelbase: 10.5 in (267 mm)

RTR Weight: 3.3 lb (1510 g)



THUNDER TIGER®

From the Experts:

With its high-tech, molded composite chassis, the Phoenix STII is durable, rigid and best of all, lighter in weight than similar trucks. ThunderTiger has developed new suspension technology to help this off-roader handle rough track conditions, and the race-proven transmission boasts a beefy 2.40:1 ratio for effortless power transfer.

Long story short...

The Phoenix STII is Ready-To-Run, and designed to dominate the 1/10 scale 2WD stadium truck competition!

THE FIRST RELEASE FROM ARRMA

ARRMA
WE ARE RADIO CONTROL



RAIDER



www.arrma-rc.com

Looks, durability, performance, value...it's all here with ARRMA!

- Fully independent suspension
- Oil-filled gear diff and shocks
- Aluminum TVP (Twin Vertical Plates) chassis and alloy front chassis plate
- Pre-glued all-terrain dBots 'Dunerunner' tires with foam inserts and chrome spoked wheels
- Tough steel turnbuckles, driveshafts and axles
- Brushless-ready all-metal transmission components
- Factory-printed polycarbonate body with a WOW! factor trim scheme
- Molded rear wing
- Powered by a MEGA 15T brushed motor with waterproof ESC
- ATX300 2.4GHz radio with
 - 6-model memory
 - AS-1 steering servo
 - Steering Dual Rate
 - End Point Adjustments
 - Fail Safe
 - Steering and Throttle trim and servo reversing
 - 3rd channel button

ARAC2011 Raider 1/10 Scale 2WD Baja Buggy RTR 2.4GHz-Yellow
 ARAC2021 Raider 1/10 Scale 2WD Baja Buggy RTR 2.4GHz-Green
 ARAC2031 Raider 1/10 Scale 2WD Baja Buggy RTR 2.4GHz-Red
Length: 15.75 in (400 mm)
Width: 9.9 in (252 mm)
Height: 5.5 in (140 mm)
Weight: 3 lb (1360 g)
Requires: 7.2V NiMH battery, charger, 4 "AA" batteries for the transmitter



Best of 2011

www.gpdealer.com

ARRMA

WE ARE RADIO CONTROL

ARRMA'S PASSION FOR PERFECTION — YOUR BLUEPRINT FOR FUN!



FURY

ARAC2401 Fury 1/10 2WD EP Short Course Truck 2.4GHz RTR-Red
 ARAC2411 Fury 1/10 2WD EP Short Course Truck 2.4GHz RTR-Blue
 ARAC2421 Fury 1/10 2WD EP Short Course Truck 2.4GHz RTR-Purple
 Length: 21.25 in (540 mm)
 Width: 11.2 (285 mm)
 Height: 7.9 in (200 mm)
 Wheelbase: 13 in (330 mm)
 Tires: dBoots Sidewinder off-road tires

All ARRMA vehicles share the same quality features — see page 5 for a list!

www.arrma-rc.com



No one else has the ATX300 adaptable radio!

Just press a button, and you can switch the transmitter from left-handed to right-handed and back again. Anyone can hold the radio in the way that feels most comfortable — and only ARRMA has it!
Design Patent No. 29/384,679



BASH WITH THE BEST OF 'EM!

EVADER EXT2™



Even MORE great features added to the proven Evader platform!

One-of-a-kind all-terrain tires
– *mounted on stylish 5-spoke wheels*

Oil-filled shocks
– *with durable, leak-resistant metal caps*

Complete set of ball bearings
– *to reduce friction and increase durability*

Battery hold-down
– *compatible with a wide range of batteries*

All of the most popular Evader advantages
– *including Photon Speed™ 2 motor, Sprint™ ESC, 2-channel Tactic™ radio and MagnaFlex™ parts*

Four hot colors to choose from!



DTXD32** Evader EXT2 RTR
Length: 16.1 in (410 mm)
Weight: 3.6 lb (1.63 kg)



From the Experts:

Looking for a model to stand up to rigorous backyard bashing? Look no further than the Evader EXT2! It incorporates the upgrades most requested — and the result is a fully assembled, Ready-To-Run stadium truck that's even bigger on looks, durability and performance, while still small in price.

Long story short...

The EXT2 is the most tricked-out Evader yet — and still upholds the Evader legacy for toughness and value in an electric off-roader!

VW BAJA BUG

1/10 Scale EP 2WD RTR

The Blast from the Past!

The VW Bug is no toy; it's the genuine off-road article, with a licensed VW Baja body to prove it. It has more than the looks of champions of the past; it has the same survival skills, too. It takes harsh terrain in stride, takes sand dunes as easily as dirt roads — and can run in any weather condition. MagnaFlex™ components in critical areas provide the durability and strength to go the distance — and the Stress-Tech™ FREE Replacement Guarantee backs up the performance promise with a full year of real protection.

It's ready-to-run — and ready to go beyond where the sidewalk ends.



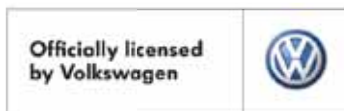
2.4GHz radio system

- Duratrax 2.4GHz FHSS radio system by Futaba®
- Sprint™ 2 Plus ESC with LiPo cutoff
- Photon Speed™ 2 19T modified motor
- Painted, finished polycarbonate body
- Assembled, oil-filled shocks
- MagnaFlex™ plastic components



DTXD36** VW Baja Bug 1/10 2WD EP 2.4GHz RTR
 DTXD36BW VW Baja Bug 1/10 2WD EP 2.4GHz RTR-Blue/White
 DTXD36RR VW Baja Bug 1/10 2WD EP 2.4GHz RTR-Red
 DTXD36WL VW Baja Bug 1/10 2WD EP 2.4GHz RTR-White/Black
 DTXD36YY VW Baja Bug 1/10 2WD EP 2.4GHz RTR-Yellow

Length: 18.2 in (465 mm)
 Width: 9.5 in (240 mm)
 Height: 8.7 in (220 mm)
 Weight: 3 lb (1.36 kg)



R/C REPLICAS OF POPULAR SHORT COURSE COMPETITORS TRUCKS! SC10 4X4 EP SHORT COURSE TRUCK KIT

www.gpdealer.com



Lucas Oil



Pro Comp



Rockstar/Makita



- Water resistant, high-power, LiPo-ready XP SC700 brushless speed control with heat sink fan and Deans® Ultra Plug® battery connector
- With its unique hybrid belt/gear drive system, the SC10 4x4 is unlike any other short course truck on the planet
- The dual gearbox drive train is coupled together with a 5 mm heavy duty belt system with external tension adjustment
- Modular tub chassis design features a low CG with a sealed receiver box and removable ESC tray
- 32-pitch front and rear gearboxes with sealed fluid-filled differentials
- Decoupled center slipper clutch allows for front and rear wheel drive to slip independently, resulting in more traction and stability on bumpy track conditions
- 12 mm hex drive KMC® replica wheels front and rear with aggressive short course racing tires
- Officially licensed replica championship short-course racing bodies
- XP3-SS 2.4GHz 3-channel radio system with S2008MG high-torque, metal gear steering servo

Deans® and Ultra Plug® are registered trademarks of W.S. Deans Co. U.S. Patent No. 5,533,915

ASCC9005 SC10 4x4 EP Short Course Truck Kit-Lucas Oil
 ASCC9006 SC10 4x4 EP Short Course Truck Kit-Pro Comp
 ASCC9007 SC10 4x4 EP Short Course Truck Kit-Rockstar/Makita
Length: 21.6 in (550 mm)
Width: 11.5 in (293 mm)
Weight: 6.1 lb* (2775 g)
Wheelbase: 12.9 in (327 mm)
 *Weight will vary depending on electronics used.



Long story short...
The SC10 4x4 is as close as it gets to full-throttle, short course truck racing excitement!

ASSOCIATED SC10RS 2WD EP SHORT COURSE RACE TRUCK RTR

Check out the major upgrades to this National Short Course Champion!



- Now equipped with a powerful, water-resistant XP SC700 brushless speed control
- The 2.6:1 ratio gearbox includes a sealed gear diff with heavy-duty internal gears and externally adjustable V2 slipper clutch
- KMC® replica hex-drive wheels are mounted on high-traction JConcepts racing compound rear tires for better grip
- The suspension boasts adjustable blue-anodized aluminum V2 coil-over shocks
- An XP3-SS 2.4GHz 3-channel radio with metal gear steering servo offers dependable control



ASCC7047 SC10RS 2WD EP Short Course Race Truck RTR-Monster Energy
 ASCC7048 SC10RS 2WD EP Short Course Race Truck RTR-Pro Comp
 ASCC7049 SC10RS 2WD EP Short Course Race Truck RTR-Rockstar/Makita
 ASCC7050 SC10RS 2WD EP Short Course Race Truck RTR-Lucas Oil



Long story short...

Team Associated engineers took the 2010 R.O.A.R. National Champion and made the SC10RS even more formidable!

THE LATEST AND GREATEST FROM TEAM ASSOCIATED

SC10 4X4 EP SHORT COURSE TRUCK KIT



- With its unique hybrid belt/gear drive system, the SC10 4x4 is unlike any other short course truck on the planet
- The dual gearbox drive train is coupled together with a 5 mm heavy duty belt system with external tension adjustment
- Modular tub chassis design features a low CG with a sealed receiver box and removable ESC tray
- 32-pitch front and rear gearboxes with sealed fluid-filled differentials
- De-coupled center slipper clutch, which allows the front and rear wheel drive to slip independently for better traction and stability on bumpy tracks
- 12 mm hex drive KMC® replica wheels front and rear with aggressive short course racing tires

ASCC9004 SC10 4x4 EP Short Course Truck Kit



Long story short...

Once you build and drive the SC10 4x4 you'll agree: this is the 4WD short course race truck you've been waiting for!

REAL SHORT COURSE RACING — IN 1/18 SCALE!

Associated SC18 Brushless 1/18 Scale 4WD Electric Race Truck RTR



- Less than a foot long... but LOADED with big time performance features!
- Control courtesy of a 3-channel XP3-SS 2.4GHz radio system
- The Reedy brushless power system featuring a 5000kV motor produces massive torque
- Fully enclosed 2-belt drive train with adjustable slipper clutch — capable of handling the extreme power that today's brushless motors and LiPo batteries dish out
- AMT™ Forged-style wheels set off the aggressive tread, multi-terrain tires
- Fully assembled and Ready-To-Run, with a painted and decaled short course race truck body

ASCD0121

SC18 Brushless 1/18 Scale 4WD Electric Race Truck RTR

Length: 10.4 in (265 mm)

Width: 5.6 in (143 mm)



Long story short...

From the first glance it's easy to see that the SC18 is another Team Associated champion by design!

READY TO ROCK — AND ROLL!

Axial® Wraith™ 1/10 Electric 4WD Rock Racer RTR



- OCP (Off-Center Pumpkin Design) Axle™ — offers more ground clearance and a better driveshaft angle
- 4-Link Suspension — reduces axle steer, allows for the proper amount of anti-squat and roll, and fights suspension wrap-up in high power applications
- AE-2 ESC with Rock Crawler Drag Brake — developed in partnership with Castle™ Creations, with LiPo cutoff and drag brake for extreme crawling
- Full Composite Tube Frame Chassis — based on the Night Stalker II chassis, and designed for exceptional strength
- Optimized Steering Geometry — featuring maximum pivot angle, minimal scrub, adjustable castor and Ackerman set as close to 0° as possible
- Protective Transmission Spur Gear Cover — helps keep dirt and debris out of the pinion and spur gear for quiet, efficient operation

AXID9018 Wraith 1/10 Electric 4WD Rock Racer RTR

Wheelbase: 13.5 in (343 mm)

Width: 11.6 in (295.3 mm)

Height: 9 in (228.6 mm)

Ground Clearance: 3 in (76.2 mm)

Weight: 5.5 lb (249 kg)

Replacement and Option Parts Galore!

For a complete list visit gpdealer.com



Long story short...

Sand tamer. Mountain trail runner. Rock racer. Mud bogger. Any kind of backyard bashing you can dream up, the versatile 4WD Wraith can take it on!

AXIAL 1/10 WRAITH™ 4WD ROCK RACER KIT

The "go fast, go everywhere" Wraith™ Rock Racer — in kit form!

www.gpdealer.com



- Universal joint axles
- Threaded aluminum lower links
- AR60 OCP-Axle™ (Off-Center Pumpkin design)
- Corbeau® LG1 Racing Seats
- Easy-access differential



- Constant Velocity Joint Design (CVJ)
- Full Metal-To-Metal Construction for the CVJ-Housing
- Friction Free Movement / Smooth Articulation
- Metal Ring Protection & Capture for the CVJ-Pin
- "Tough-as-Tusk" Durability
- Easy Assembly & Maintenance

AXID9020 1/10 Wraith™ 4WD Rock Racer Kit
Length: 19 in (483 mm)
Width: 11.6 in (295 mm)
Height: 9 in (229 mm)
Wheelbase: 13.5 in (343 mm)
Ground Clearance: 3 in (76 mm)
Weight (w/o electronics): 4.9 lb (2.22 kg)

The 2.2 Ripsaw™ tires offer realistic looks for the image-conscious scaler, while the aggressive tread design and R35 compound offer superior gripping performance. Officially licensed 2.2 Raceline Renegade wheels add even more authenticity, and will stand up to rugged off-road action.



A full-tube composite injection molded frame chassis keeps everything protected. Tuned shock springs provide the right balance for reaching high speeds and handling harsh terrain.

Long story short...

From off-road bashing to treacherous rock crawling to serious sport racing, the 1/10 scale Wraith™ 4WD Kit does it all!



HPI RACING® SAVAGE™ XS FLUX BRUSHLESS 2.4GHZ RTR

Scaled down, souped up and ready to rip!



65+ mph!

- Authentic Savage looks and legendary Savage durability — scaled down for fun on smaller tracks
- Enjoy blazing speeds with 2S and 3S LiPo batteries!
- Powered by Castle, the brushless Flux VAPOR Pro speed control and Flux VECTOR 4000 motor offer easy operation, low maintenance and tremendous torque
- Waterproof electronics let you keep going even in adverse conditions
- 4WD with all metal gear drivetrain and full ball bearings
- The twin Vertical Plate chassis carries on the Savage tradition

Original Savage
21"



Savage XS Flux
14"

HPID7671 Savage XS Flux Brushless 2.4GHz RTR
Length: 14 in (356 mm)

Long story short...

The Savage XS Flux RTR packs power, performance and toughness in a complete, compact package with all the asked-for extras!



HPI RACING® NITRO RS4 3 EVO+ RTR

Greater performance...and three great new body styles!



'67 Chevy Corvette



Plymouth AAR 'Cuda

50+mph



BMW 3 GT2

- 2.4GHz radio system for glitch-free operation
- 3-channel receiver with failsafe
- Powerful, rechargeable 7.2V Plazma 2000mAh battery
- Waterproof SF-10W steering servo
- AA transmitter batteries
- AC wall charger
- Gunmetal anodized aluminum chassis
- Stealth black engine heatsink head
- Glow igniter, fuel bottle, multi-purpose wrench, extra glow plug
- Choose from 3 pre-painted, trimmed bodies: the contemporary BMW M3 GTR, or classic American muscle cars such as the Plymouth 'Cuda and '67 Corvette

HPID0936 Nitro RS4 3 EVO+ RTR BMW 3 GT2

HPID0938 Nitro RS4 3 EVO+ RTR 'Cuda

HPID0940 Nitro RS4 3 EVO+ RTR '67 Corvette

Length: 17 in (432 mm)



Long story short...

New high-performance upgrades make the legendary line of Nitro RS4 3 touring cars even better!

HPI 1/8 VORZA FLUX HP BRUSHLESS 2.4GHZ RTR

The record-setting Vorza Flux HP gets a make-over!



Insane speeds
of up to **73** mph!*

*with optional gearing, tires and (2) 6S 11.1V LiPo packs.

Catch big air with hair-raising BMX jumps, or capture the checkered flag in top-level racing action! The 1/8 Vorza Flux HP is fully capable of both, thanks to overall upgrades from the crack team of HPI engineers. Using the World Champion HB D8 buggy as its foundation, the Vorza Flux HP utilizes the best in brushless technology to take on the competition and come out on top!

- All the top-of-the-line features you could want, AND it's Ready to Run!
- Equal-length 16 mm HB Big Bore shocks smooth out the ride and provide plenty of adjustability
- The drivetrain is rock-solid reliable, with D8 spiral-cut worm gear diffs that transfer the most power from the driveshafts to the wheels
- Comfortable, interference-free control is yours with the included 2.4GHz radio system — and no crystals to contend with!

HPID1850 1/8 Vorza Flux HP Brushless
2.4GHz RTR
Length: 20 in (508 mm)
Width: 12 in (205 mm)
Height: 7 in (178 mm)
Wheelbase: 12.8 in (325 mm)

Long story short...

Just when you thought a World Championship-level buggy couldn't get better...along comes the Vorza Flux HP with even more cutting-edge upgrades!



BADDER AND BETTER THAN EVER!

HPI® Savage X 4.6 Big Block 2.4GHz RTR

www.gpdealer.com



- Huge horsepower and tremendous torque generated by the F4.6 Big Block engine with easy-starting Roto Start™ 2 system
- The HPI 2.4GHz radio system prevents frequency conflicts for worry-free control
- Legendary Savage toughness with nothing spared. New sintered bulletproof ring and pinion gears and Big Bore shocks are now standard equipment. Coupled with a two-speed transmission complete with all metal gears, beefy metal drive shafts throughout, and the toughest suspension arms on the market, the Savage X 4.6 begs to go where others can't.
- The Savage X 4.6 is the most user-friendly Savage ever, allowing you to access all of the key areas with minimal disassembly. From the differentials, to the transmission, shocks and spur gear. No matter what part of the truck you are trying to access, it can all be done in record breaking time!
- Over \$65 of included accessories, including a rechargeable 7.2V Plazma battery pack, charger, full set of Plazma AA batteries, glow igniter, 4-way wrench, and even an extra glow plug- just add HPI Power Fuel and start driving!

45+ mph



HPID44** 1/8 Scale Savage X 4.6 Big Block 2.4GHz RTR

Length: 21 in (534 mm)

Width: 17 in (427 mm)

Height: 10 in (254 mm)

Wheelbase: 14.3 in (363.5 mm)



Long story short...

The faster, more powerful, better equipped Savage X 4.6 Big Block 2.4GHz monster truck is the ultimate backyard basher!

BRING BAJA 1000 THRILLS TO YOUR BACKYARD!

HPI 1/5 Scale Baja 5SC 2.4GHz RTR



- A skid-plate front bumper and large rear bumper with rubber mud flaps add durability and realistic looks
- Power comes from a massive 26cc Fuelie engine that propels the Baja 5SC to speeds of over 40 mph
- More than 45 minutes run time on a single tank of regular unleaded gasoline
- Extra traction is provided by HB Rodeo tires, mounted on TR-10 beadlock truck wheels
- A 2.4GHz radio delivers interference-free control without crystals
- Preassembled by the expert HPI crew to be ready to hit the dirt right out of the box!



HPID61** 1/5 Scale Baja 5SC 2.4GHz RTR



Long story short...

For those who like their racing big and bold, the Baja 5SC fills the bill perfectly!

KEN BLOCK GYMKHANA FIESTA

TRAXXAS

1/16 4WD BRUSHLESS 2.4GHZ RTR

Brushless speed, 2.4GHz control & authentic graphics!



TQ 2.4GHZ HIGH OUTPUT
TRAXXAS LINK

TRAD7309
1/16 Ken Block Gymkhana Fiesta 4WD Brushless 2.4GHz RTR



- Exclusive, licensed special edition tricked out with the same paint-drip graphics found on Ken Block's full-size Gymkhana racer
- The extreme power of the Velineon® 380 brushless motor is controlled by a waterproof VXL-3m ESC
- Features a high-output TQ 2.4GHz radio system
- The included Power Cell battery delivers 30+ mph speeds right out of the box; adding a second optional pack and Speed Connector (#3063) boosts speeds to over 50 mph!

Long story short...

Traxxas technology yields hours of challenging, addictive fun perfecting the ultimate Gymkhana slide



DRIVE THE RACING TRUCK INSPIRED BY KYLE BUSCH!

Slash™ Pro 2WD 2.4GHz RTR-Black/Red #18 Kyle Busch

www.gpdealer.com

SLASH KYLE BUSCH EDITION



30+ mph

- Bold graphics inspired by the no. 18 Traxxas-sponsored truck that Kyle Busch drove in the 2010 NASCAR Camping World Truck Series!
- Race worry-free with the security of a TQ 2.4GHz radio system
- Waterproof electronics keep you in the action, even in mud and snow!
- Powered by a Titan 12T 550 modified motor and XL-5 electronic speed control
- Reach blazing speeds of over 30 mph!*

*with included Power Cell battery and included optional 23-tooth pinion gear



TRAXXAS Goes NASCAR With Kyle Busch!

During the 2010 NASCAR Camping World Truck Series, Kyle raced Chicagoland, Talladega, and Homestead with Traxxas sponsorship and took the checkered flag every time he flew Traxxas colors. Traxxas is returning to NASCAR with Kyle Busch in 2011, and bringing the excitement of **The Fastest Name In Radio Control** to tens of thousands of fans at each event Kyle races with Traxxas. On the midway before each race, crowds gather to experience R/C fun on the Traxxas Try-Me Track, learn about "Ready-To-Race®" radio control, and thrill to action-packed demonstrations of Traxxas power, speed, and fun! Traxxas encourages race fans to make their next stop the local hobby store, where they can get their own high-performance Traxxas car, truck, or boat. Watch for Kyle Busch racing with Traxxas in the NASCAR Camping World Truck Series—and watch for new customers in your store!

Kyle Busch name, signature and likeness used under rights granted by Kyle Busch Motorsports.

Long story short...

Traxxas commemorates Kyle Busch's winning season on the 2010 NASCAR Camping World Truck Racing Series with a Slash 2WD Ready-To-Race® replica!

TRAD19LL 1/10 Slash Pro 2WD 2.4GHz RTR-Black/Red #18 Kyle Busch

Length: 22.4 in (568 mm)
 Front/Rear Track: 11.65 in (296 mm)
 Height: 8.4 in (214 mm)
 Wheelbase: 13.2 in (335 mm)



TRAXXAS

STAMPEDE® 4X4 VXL 2.4GHZ RTR



60+
mph

STAMPEDE

VXL

BRUSHLESS

- Engineered for extreme speeds, brute power and eye-popping wheelies!
- Equipped with an ultra-powerful Velineon® 3500 brushless motor and LiPo-compatible VXL-3s ESC
- Waterproof electronics let you run in wet and muddy conditions
- Soft compound Talon™ multi-terrain tires are mounted on black-chrome All-Star™ 2.8 wheels
- Uses popular Slash 4X4 parts and accessories
- Comes with a 8.4V 3000mAh Traxxas Power Cell battery pack and charger
- Fully assembled and Ready-To-Race®

TRAD29** Stampede 4x4 VXL 2.4GHz RTR



To 2.4GHz HIGH OUTPUT

TRAXXAS LINK



Long story short...

Velineon brushless power and full-time 4WD takes this segment of monster truck to a whole new level of performance and fun!

TRAXXAS

TRAXXAS

SLASH

2WD EP SHORT COURSE RACING TRUCKS



SLASH RTR

- The original short course racing truck — and still an exceptional value!
- Updated with officially licensed Kumho Road Venture MT tires and a Slash 4x4-style body
- Equipped with a reliable TQ 2-channel AM radio; battery and charger not included

TRAD27** 5802 Slash RTR

\$ _____



SLASH RTR w/BATTERY & CHARGER

- Adds a Power Cell 7-cell battery and charger for more convenience!
- Comes with BFGoodrich® or Kumho tires, both officially licensed
- Several officially licensed race replica body styles to choose from

TRAC43** 5805 Slash RTR w/Battery & Charger

\$ _____

TRAXXAS

Slash represents the cutting edge in 1/10 scale electric short course racing trucks, and for good reason! They're Ready-To-Race®, with waterproof electronics to keep you in the action — and no other short course truck has won more top honors. Whether you opt for the original Slash, go right to the top with the VXL, or start somewhere in between, there's a Slash that's ready to become your winning ride!



SLASH 2.4GHz RTR w/BATTERY & CHARGER

- Adds the worry-free control and security of a TQ 2.4GHz radio system!
- Includes BFGoodrich or Kumho tires and a choice of race replica body styles
- A Power Cell 7-cell battery and charger are also included

TRAD19** 5803 Slash 2.4GHz RTR w/Battery & Charger



SLASH VXL 2.4GHz RTR w/BATTERY & CHARGER

- It's Slash performance and technology taken to the next level!
- Boasts a Velineon® Extreme brushless power system along with a TQ 2.4GHz Traxxas Link™ radio
- Other new upgrades include a 4x4-spec steering bellcranks, heavy-duty driveshafts and brushless-optimized suspension settings

TRAD28** 5807 Slash VXL 2.4GHz RTR w/Battery & Charger



Long story short...

The top-selling Slash lineup has a model and price point that matches any budget!

1/16 SUMMIT VXL 4WD 2.4GHZ RTR

40+ mph

SUMMIT



- Rock any terrain with brushless VXL horsepower!
- The Velineon® 380 brushless motor is the largest in its class; the VXL 3m ESC produces ultra-efficient power flow
- Extreme-duty driveshafts transfer horsepower to the wheels for virtually go-anywhere fun
- Right-out-of-the-box speeds of over 25 mph with the included Power Cell battery; experience 40+ mph speeds when you add an optional second battery*!
- Fully waterproof electronics keep you going in mud, snow and other wet conditions that send other trucks back to the bench
- The ExoCage™ body adds to the Summit's rugged looks

*Traxxas Speed Connector required

To 2.4GHz HIGH OUTPUT
TRAXXAS LINK

TRAD30** 1/16 Summit VXL 4WD 2.4GHz RTR

\$ _____



Long story short...

This 1/16 Summit delivers all the fun and unstoppable versatility of its big brother in a powerful, compact package!

TWO MORE OFFICIALLY LICENSED MONSTER JAM® MEGA-MODELS!



Grave Digger® EP Monster Truck RTR
TRAD35**

Grinder™ EP Monster Truck RTR
TRAD34**



30+ mph



Maximum Destruction® EP Monster Truck RTR
TRAD37**

Monster Mutt® EP Monster Truck RTR
TRAD36**

- Monster truck fan favorites, exclusively from Traxxas--the Official Hobby Class Radio Control Truck of Monster Jam®!
- Officially licensed graphics accurately duplicate both of these full-size fan favorites — right down to the Monster Mutt's tongue and ears
- A Titan® 12-turn 550 modified motor delivers wheelie-popping performance, with Ultra Shocks and a long-travel independent suspension engineered to cushion the most extreme bumps and jump landings
- Watertight, sealed electronics give you the freedom to drive where other off-roaders can't
- Specially designed tires capture the "hand carved" look of the full-size treads, set off by new deep-dish wheels with bead-lock

*with included 7-cell battery and 23-tooth pinion gear.

TRAD36** 1/10 Monster Jam Monster Mutt EP Monster Truck RTR

TRAD34** 1/10 Monster Jam Grinder EP Monster Truck RTR

TRAD37** 1/10 Monster Jam Maximum Destruction EP Monster Truck RTR

TRAD35** 1/10 Monster Jam Grave Digger EP Monster Truck RTR



Long story short...

Traxxas' new Monster Jam vehicles, make crushing cars, catching air and popping wheelies more fun than ever!

Best of 2011

THE ROCK STAR OF RACING BOATS!

Motley Crew



Durable fiberglass is the only material worthy of the Motley Crew's aggressively-styled catamaran hull.

Ready to rock with top shelf components!

- Water-cooled 6-pole 1800kV brushless motor
- 60A brushless ESC with 4 mm bullet connectors and Deans® Ultra Plugs®
- Tactic™ 2.4GHz radio system with interference-free control, no-crystal convenience and Secure Link™ technology
- A complete package of high-performance GrimRacer™ parts

Deans® and Ultra Plug® are registered trademarks of W.S. Deans Co. U.S. Patent No. 5,533,915

**AQUB2100 Motley Crew Brushless
FE Catamaran RTR**
Hull Length: 29.5 in. (750 mm)
Overall Length: 31.75 in. (808 mm)
Beam: 10.4 in. (264 mm)

AQUACRAFT®
 Models

From the Experts:

Right down to the licensed trim scheme, AquaCraft's Motley Crew Fast Electric Catamaran captures the exciting style of Ron & Scott Roman's world champion offshore racer. All the latest performance perks are here for dominating the competition at the highest levels — but it's also easy enough for sport modelers to enjoy!

Long story short...

The Motley Crew starts with sleek catamaran styling — and backs it up with a powerful brushless electric system that will leave all the other FE competitors in its wake!

The Motley Crew name and trim scheme are trademarks of Motley Crew Offshore Racing and used under license by Hobbico®, Inc.

MINI SIZE...MAX PERFORMANCE! ONLY 18" LONG!

MINIMONO



- Powered by a water-cooled 28-30-2200kV brushless outrunner motor
- The 20A ESC is designed for a 3S LiPo batteries, and comes equipped with a Deans® Ultra Plug® connector
- A Tactic™ 2.4GHz radio is included that features interference-free control, no-crystal convenience and Secure Link Technology™
- If the Minimono strikes an object in the water, a breakaway feature allows the rudder to swing back and avoid damage, and snap quickly back into place

Deans® and Ultra Plug® are registered trademarks of W.S. Deans Co. U.S. Patent No. 5,533,915

AQUB1805 Minimono Brushless 2.4GHz RTR

Hull Length: 16 in (406 mm)
Overall Length: 18 in (458 mm)
Width: 5.5 in (140 mm)
Weight (less battery): 10 oz (283.5 g)

AQUACRAFT
Models

From the Experts:

The Minimono represents a new breed of boat: a mini-sized model equipped with a brushless motor and an ESC that uses a single 3S LiPo battery! This advanced power system makes the Minimono one fast boat that's lots of fun to drive. Its smaller size and responsive handling let you race on smaller bodies of water — and it's very affordable to operate too!

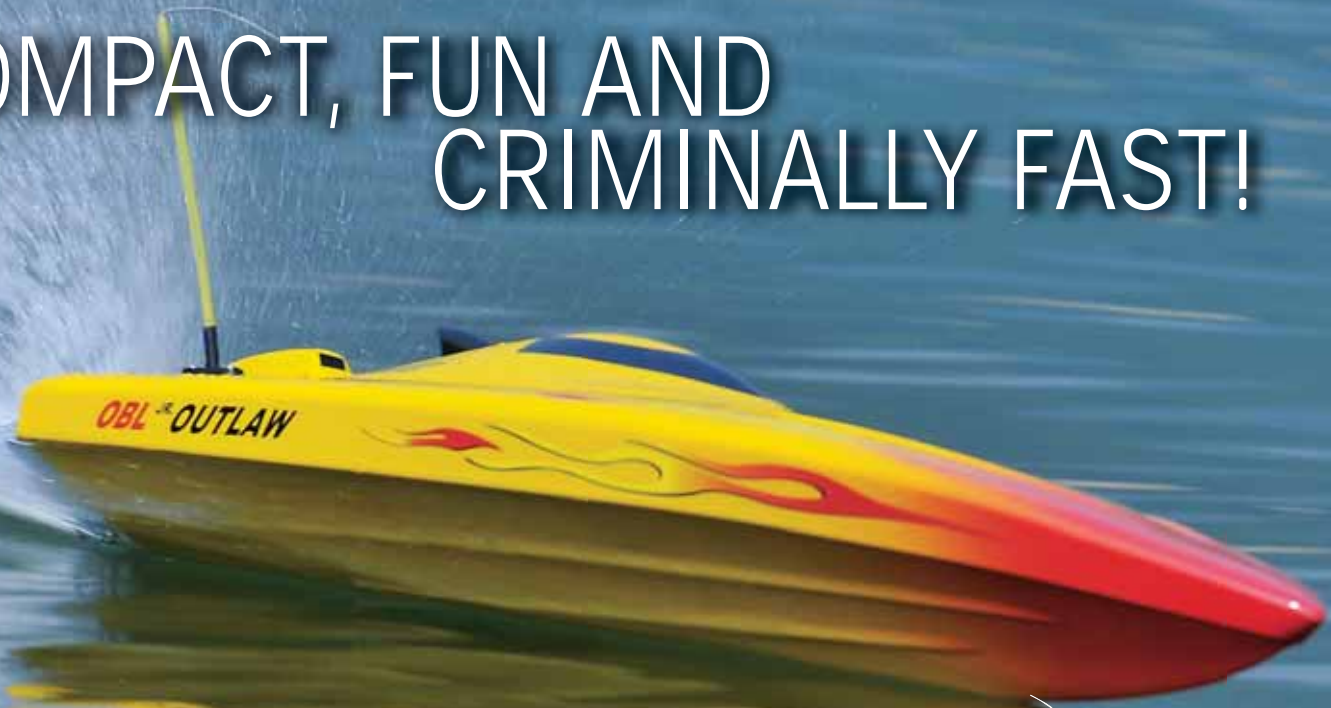
Long story short...

No one had ever thought of making a mini boat that used brushless motor power and a LiPo battery... until the Minimono!

Best of 2011

COMPACT, FUN AND CRIMINALLY FAST!

www.gpdealer.com



OUTLAW JR. OBL



- Powered by a water-cooled OBL29/20-15M brushless motor and BLC-40M ESC
- Controlled by a Cougar PS2 2.4GHz 2-channel radio with mini receiver
- ABS blow-molded deep vee hull that's preassembled and pre-painted
- On-board gear is easily accessed under a quick-release hatch.
- Comes with a wooden display stand

TTRB5123 Outlaw Jr. Brushless 2.4GHz RTR-Yellow
TTRB5124 Outlaw Jr. Brushless 2.4GHz RTR-Green
Length: 29 in (740 mm)
Beam: 8.3 in (210 mm)
Weight: 2.3 lb (1050 g)



THUNDER TIGER®

From the Experts:

You'll break all the speed limits when you take the Outlaw Jr. out for a spin! The sleek deep vee hull knives through the water, and the water-cooled brushless motor provides plenty of power. At less than 2-1/2 feet long, the Outlaw Jr. doesn't need a large body of water to show what it can do, and everything is already installed — including a 2.4GHz radio!

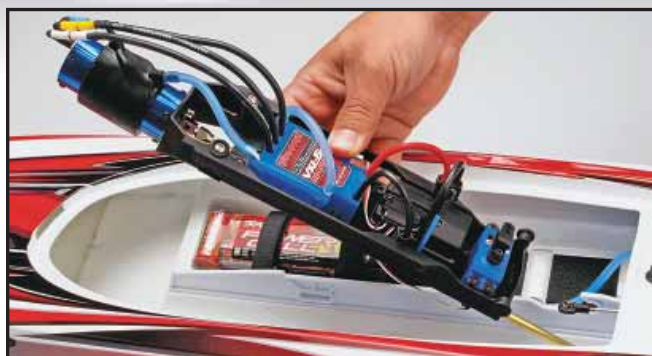
Long story short...

The Outlaw Jr. RTR boasts quality components — and with lots of preassembly that will have you skimming across the water in no time!



TRAXXAS® SPARTAN™ VXL-6S BRUSHLESS 2.4GHZ RTR

This boat means business!



Extreme brushless power, with a 540XL motor and a VXL-6s ESC engineered by Castle, the leader in high-powered brushless performance.

TRAB59** Spartan VXL-6s Brushless 2.4GHz RTR
Hull Length: 36.5 in (927 mm)
Beam: 9.5 in (243 mm)
Weight: 72 oz (2041 g)



50+ mph*

*when equipped with a 6S LiPo pack.

- 100% Ready-To-Race®!
- Capable of 30+ mph right out of the box with the two included 7-cell battery packs; reach speeds of over 50 mph with an optional 6S LiPo!
- Precise control with a TQ™-2 2.4GHz radio with Traxxas Link™ and a waterproof high-torque steering servo
- Equipped with a blue-anodized aluminum rudder and stainless steel turn fins and trim tabs
- The hull is multi-layered for maximum rigidity where it matters most

Long story short...

Combine a super-sleek deep vee hull with a rooster tail-throwing brushless motor and you've got the Spartan VXL-6s: the ultimate R/C boating power trip!

Best of 2011

TAKE A FULL-THROTTLE, "WHITE KNUCKLE" THRILL RIDE!

RIFLE™



90 mph!*

*Average speed at sea level with recommended electronics.

- Made of lightweight, composite parts factory-finished in a trim scheme that helps you stay oriented in flight
- Live hinge control surfaces maximize control while minimizing deflection drag
- Assembles in just 1-2 hours — both the wing and stabilizer bolt into place and align automatically
- High-quality hardware and accessories — including a machined aluminum spinner — add to the sleek looks and superior performance

From the Experts:

If you have advanced flying skills, the Rifle will reward those skills with speeds that'll get your heart pumping and predictable, "goes where you point it" handling and tracking. With its compact size and light weight, this easy-building ARF is ideal for sport flying as well as Speed 400 pylon racing. Rip holes in the sky...then chill out, charge up and fly again!

Long story short...

Everything about the Rifle promises exhilarating performance...and it delivers!

ElectriFly®
by Great Planes®

GPMA1805 Rifle EP Sport ARF

Wingspan: 31 in (785 mm)

Length: 24.5 in (620 mm)

Weight: 17-18 oz (480-510 g)



READY RIGHT NOW FOR SPORT AEROBATICS



Super Sportster **Rx-R** RECEIVER-READY

- A powerful brushless motor, ESC and micro servos are all factory-installed
- Features durable AeroCell™ foam construction
- Fast, easy assembly with no gluing
- Simply add your transmitter, receiver and LiPo battery

GPMA6006 Super Sportster Rx-R
Wingspan: 40 in (1015 mm)
Wing Area: 267 in² (17.2 dm²)
Weight: 20-22 oz (565-605 g)
Length: 32.5 in (825 mm)

ElectriFly®

From the Experts:

For years the Super Sportster has been a classic “second” airplane — the ideal model for initiating pilots to low-wing flight and sport aerobatics. This Receiver-Ready version makes getting a Super Sportster to the flight line even easier, with foam construction, a brushless electric power system and 4 micro servos already in place. And you get to install your choice of radio system and LiPo battery!

Long story short...

It's an easier way to enjoy the low-wing flight characteristics that the Super Sportster is famous for!

A PLANE FOR ALL OCCASIONS

ESCAPADE .61



- Flies equally well with a glow engine or brushless electric motor
- Tail surfaces bolt on and align automatically, and control horns are pre-installed and pre-aligned
- A two-piece wing simplifies assembly as well as transportation
- Control surfaces are pre-hinged
- Other convenience/detail touches include a fiberglass cowl and wheel pants, plus a painted and installed pilot figure



GPMA1201 Escapade .61-1.20/EP ARF
Wingspan: 68 in (1725 mm)
Weight: 8.25-9.0 lb (3.74-4.08 kg)
Length: 58.5 in (1485 mm)



From the Experts:

"We've taken the Escapade — a favorite among flyers since 2008 — and enlarged it to create the Escapade .61 ARF. It's still just as easy to assemble, with a variety of options for powering it and a price that makes it a real value. Plus, the larger dimensions add stability and visibility to your sport aerobatics!"

Don Anderson, Founder
Great Planes Model Manufacturing

Long story short...

With bolt-together assembly, the Escapade .61 ARF is a breeze to build — and so enjoyable and affordable, you'll want to fly it every chance you get.

FAST EASY FLYING!TM *SKYCRUISER*TM



- Everything you need is included and installed, so final assembly requires less than 5 minutes, with no tools
- "Rolled up" wingtips look sharp and create built-in dihedral
- FlightFlexTM material bends upon impact instead of breaking
- In the event of a nose-in crash, the Sky Cruiser's pod-mounted pusher design offers more protection for the prop
- You can set the controls on the 4-channel 2.4GHz radio for "New Pilot" or "Experienced Pilot" by just pushing down on the stick
- The 2S LiPo battery and brushed motor provide plenty of power for this super-lightweight glider

COXA6503 Sky Cruiser RTF
Wingspan: 27.6 in (702 mm)
Weight: 3.3 oz (94 g)
Length: 20.2 in (515 mm)



From the Experts:

With the stable, easy-to-fly Sky Cruiser you can be enjoying strong climbs and long glides in less than 5 minutes! Virtually all building is done for you, and there's nothing extra for you to buy. The 2.4GHz radio eliminates any concerns about interference, and the FlightFlex material and exclusive SafePropTM protection means you can fly with confidence.

Long story short...

Starting out in R/C flying doesn't get any easier than the Sky Cruiser!

EXCITING NEW AIRPLANE MODELS INNOVATION AND VALUE

They're simple to assemble, all-in-one complete...and all about affordable fun! In just 5 minutes you can be flight-ready, and Cox planes come with these advantages:



SafeProp protection — a Cox exclusive!

A nose-in crash usually means damage, even if it's only to the prop. But the SafeProp literally pops off on impact, protecting itself and the rest of the plane. Simply pop it back on, and you're back in the air!



Fly alone...or with friends!

The included 4-channel 2.4GHz radio is cutting-edge; you can fly with friends and never worry about interference. And here's a big plus: you can set the controls for "New Pilot" or "Experienced Pilot" by just pushing down on the stick!



FlightFlex construction that's practically indestructible!

Most planes break after a hard landing...but Cox models won't because they bend instead. They flex on impact to absorb crash energy and protect the electronics inside. Straighten it out in just seconds, and you're good to go again!



Ready to FLY!

Start flying almost immediately!

The motor, radio gear and servos are already installed, and everything else (even the "AA" batteries!) is in the box. Charge up the lightweight LiPo battery pack, and you're set for up to 10 minutes of flight time!



WITH LEGENDARY COX®

Sky RANGER

Ready-to-Fly Electric R/C Trainer



Stable handling and gentle response make the Sky Ranger the ideal first plane!

COXA6501 Sky Ranger EP Park Flyer RTF
Wingspan: 20 in (508 mm)
Length: 15.5 in (394 mm)
Weight: 2.2 oz (62 g)



EXTRA 300

Ready-to-Fly Electric R/C Aerobat



For aspiring aerobat pilots ready to try their hand at loops and rolls, the Extra 300 is an excellent choice!

COXA6502 Extra 300 EP Park Flyer RTF
Wingspan: 20 in (508 mm)
Length: 18 in (457 mm)
Weight: 3.35 oz (95 g)



From the Experts:

The Sky Ranger and Extra 300 continue the Cox tradition of well-made R/C products that deliver on the promise of fun and enjoyment without a high price tag.

Long story short...

It's everything you love and remember about Cox models...only better!

FastEasyFlying!™

Best of 2011

TWO WAYS TO FLY ANYWHERE Überlites™ — IN A SNAP!

www.gpdealer.com



Truly "fly anywhere" models that anyone can afford and enjoy!

- At just over a half an ounce, Überlites are among the lightest R/C planes ever engineered
- The innovative "Snap & Fly™" system utilizes an interchangeable flight module that powers and controls all Überlite aircraft
- Each Überlite set comes with 2 airframes (a biplane and monoplane), one flight module, a 2.4GHz radio with charger, a LiPo flight battery and 4 "AA" radio batteries

It's as easy as 1-2+3!

- 1 SNAP on the flight module — until it magnetically clips into place!
- 2 CHARGE the battery — right from the transmitter's USB style port!
- 3 FLY indoors or out — virtually any room can become a flying field!

HCAA2560 Überlites 2-in-1 Monoplane/Biplane RTF Set
Monoplane
 Wingspan: 16.1 in (410 mm)
Biplane
 Wingspan: 14 in (355 mm)

Also available: a separate Wing airframe that can be flown using equipment included with the 2-in-1 set!



HCAA6395 Überlite Wing Airframe
 Wingspan: 9.5 in (240 mm)
 Weight: 0.6 oz (17 g)
 Flight module and radio not included

ItCanFly®
 Modular Aircraft

Flyzone™

From the Experts:

There's nothing else in R/C quite like Überlites! These feather-light flyers come fully assembled, and are powered by a module that holds all the electronics for flying anywhere indoors (or outside on a very calm day). Each set includes two airframes, one flight module, a 2.4GHz radio and all batteries. Überlites are easy enough for any modeler to start piloting right out of the box.

Long story short...

Enjoy real, affordable R/C flight virtually anywhere with the complete, ready-to-fly Überlite 2-in-1 Set!

Überlites Modular RC Airplanes (Patent Pending)

FLY A CONTEMPORARY CLASSIC

www.gpdealer.com

CESSNA[®] CORVALIS[®]

Select Scale™ **Rx-R**
RECEIVER-READY



- Accurately replicates the sleek styling of the Corvalis, right down to the trim scheme, detailed interior and bright LED navigation and landing lights
- With just 2 tools and about 30 minutes you'll be ready to hit the flight line — a quality brushless power system and servos are already installed
- Exhibits excellent scale flight for intermediate and advanced pilots, with working flaps that let you slow for landing
- In addition to looking scale, the tricycle landing gear features a shock-absorbing steerable nosewheel.



Bright LED navigation and landing lights top off the design, adding realism by day and visibility at dusk.

HCAA2534 Select Scale Cessna 350 Corvalis EP Rx-R
Wingspan: 57 in (1450 mm)
Weight: 2-2.25 lb (910-1020 g)
Length: 38 in (965 mm)

Flyzone™

Cessna 350, Corvalis, emblems, logos, and body designs are trademarks of Textron Innovations Inc. and are used under license by Hobbico®, Inc.

From the Experts:

This Select Scale Cessna 350 Corvalis is Flyzone's most advanced model yet! Final assembly hardly qualifies as "assembly" and when finished you'll have a beautiful scale version of an aviation classic. Busy modelers will appreciate the Corvalis' Receiver-Ready convenience, and its flight characteristics are every bit as scale as its looks!

Long story short...

Select Scale technology precisely captures the elegance and performance of Cessna's extraordinary Corvalis!



Best of 2011

EVERYTHING YOU COULD WANT IN AN EP TRAINER

sensei[™]
master the art of flying



www.gpdealer.com

- Made of durable AeroCell™ foam that assembles with household tools — no glue required!
- A stable, high-wing design and long flight times combine to make learning to fly easier
- Comes with a powerful brushless motor, 30A ESC and 5 micro servos preinstalled
- The RTR includes a Tactic™ 6-channel 2.4GHz radio with dual rates, along with an 11.1V 2100mAh LiPo battery and charger, for the ultimate in convenience
- The Rx-R™ offers you the flexibility to install your preferred radio system and LiPo battery

HCAA2535 Sensei EPTrainer RTF
HCAA2536 Sensei EPTrainer Rx-R
Wingspan: 58 in (1475 mm)
Wing Area: 566 in² (36.5 dm²)
RTF Weight: 3.2 lb (1450 g)
Rx-R Weight: 3.25-3.5 lb (1470-1590 g)
Length: 48 in (1220 mm)

Flyzone[™]

From the Experts:

The Sensei brings together all of the elements you look for in a trainer aircraft. You can have your model flight-ready in minutes with just pliers and a screwdriver. The high wing produces gentle performance that inspires confidence, and the foam airframe is easy to repair. Plus, you can choose between the Receiver-Ready Sensei that you can equip with your choice of radio and battery, and the Ready-To-Fly version that's all-inclusive!

Long story short...

With its smooth, predictable flight and classic design, the Sensei is an EP trainer you'll be proud to take to the field.

COMBAT ON COMMAND FOCKE-WULF FW 190

Select Scale™ **RTF**
READY-TO-FLY

or

Select Scale™ **Rx-R**
RECEIVER-READY



- Built-in "extras" include retractable, shock-absorbing landing gear and scale operational flaps
- Equipped with a powerful brushless outrunner motor and ESC, plus 5 micro servos
- AeroCell™ foam construction makes for a strong, lightweight airframe
- A hatch in the top of the plane allows for easy battery access
- The Ready-To-Fly (RTF) version comes complete with a Tactic™ 6-channel 2.4GHz, 11.1V 1800mAh LiPo battery, charger and 4 "AA" batteries
- Going with the Receiver-Ready (Rx-R™) model allows you to install your choice of receiver and battery



The Focke-Wulf FW190 RTF comes with a 6-channel Tactic 2.4GHz radio system.

HCAA2538 Select Scale Focke-Wulf 190 Fw Brushless 2.4GHz RTF
 HCAA2539 Select Scale Focke-Wulf 190 Fw Brushless Rx-R
 Wingspan: 44.5 in (1130 mm)
 Length: 39 in (990 mm)
 RTF Weight: 2.5 lb (1134 g)
 Rx-R Weight: 2.25-2.5 lb (1020-1134 g)



From the Experts:

The Focke-Wulf Fw 190 was a favorite of the Luftwaffe during WWII, and Flyzone's Select Scale replica of this famous fighter is sure to become a favorite at your local flying field. AeroCell™ foam construction and a powerful brushless motor system are complemented by many Select Scale components, and you can choose between the convenience of the RTF or the versatility of the Rx-R version that lets you equip your Focke-Wulf with your favorite receiver and battery.

Long story short...

R/C pilots will enjoy the Focke-Wulf Fw 190's ease of assembly and numerous scale details!



Best of 2011

THE CAREFREE WAY TO PILOT A CLASSIC!

super cub

www.gpdealer.com



- Nothing left to buy — even “AA” radio batteries are included!
- Factory-finished and complete with wing struts, fairings and tailwheel
- All onboard gear is pre-installed and flight-ready
- A 3.7V 130mAh LiPo pack delivers up to 10 minutes of flight time, and recharges on the radio
- The included Tactic™ 2.4GHz radio is designed for great “feel” and smooth 3-channel control in the air

HCAA2552 Super Cub RTF
Wingspan: 17.7 in (450 mm)
Length: 13.2 in (335 mm)
RTF Weight: 1.0 oz (20 g)

Flyzone
how high will you soar

From the Experts:

It's more than a ready-to-fly micro — it's one of today's easiest ways to enjoy an aviation classic. With a wingspan under 18", the Super Cub can use almost any open area as a flying field: parks, playgrounds, backyards — even a gymnasium. And since the Super Cub arrives with everything you need, you can be out the door and on your way to the airfield closest to you in next to no time!

Long story short...

Everybody loves a Cub — and you'll love how easy and fun it is to fly this micro-sized model of the Super Cub almost anywhere!



**STRIKING
IN 90-CLASS
COMPETITORS**

RAPTOR[®]

90-Class Glow Heli

G4

- The head is all metal, with the main rotor shaft made of hardened steel
- Setup is a snap with the Quick-Calibration System
- A helical main gear provides more surface area for more strength, while also transferring torque more efficiently
- Collective pitch range is a very impressive +/- 15°
- Available in two versions: traditional flybar design and one with cutting-edge flybarless technology



TTRE0096 Raptor G4 90-Class Nitro Heli
 TTRE0098 Raptor G4 90-Class Nitro Heli-Flybarless
 Main Rotor Diameter: 62.4 in (1584 mm)
 Tail Rotor Diameter: 11 in (280 mm)
 Fuselage Length: 53.3 in (1354 mm)
 Flying Weight: 9.7 lb (4400 g)



THUNDER TIGER

TTRE0096
Raptor G4 90-Class
Nitro Heli



TTRE0098
Raptor G4 90-Class
Nitro Heli-Flybarless



From the Experts:

From the ground up the Raptor G4 Glow heli was designed to dominate all other 90-Class machines. The rotor head is a technical marvel, delivering exceptional stability for 3D or precision aerobatics. Many components have been strengthened to withstand extreme aerobatic maneuvers, and setting it up is a breeze. Plus, the Raptor G4 is surprisingly lightweight, which enhances its agility and performance even more!

Long story short...

Both the flybar and flybarless versions of the Raptor G4 90-Class heli are gaining more admirers with every competition they enter!

A TORQUE TUBE TAIL TAKES THE TITAN X50 TO THE EXTREME!

Titan X50 Kit w/Torque Tube Tail



- The highly efficient torque tube-driven tail rotor delivers the crisp rudder response and 100% power transfer that 3D heli pilots demand
- In addition to high-tech looks, the carbon/aluminum compound tail boom adds stiffness and reduces vibration
- Each tail rotor grip has two radial and thrust bearings, for precision and reliability
- The under-slung flybar head is machined aluminum, including the blade grips
- All shafts are made of heat-treated, hardened stainless steel
- Choose the Titan X50 Kit, or go all-out with the kit version that includes a Redline 53H engine with 3D pipe and carbon-fiber blades
- A separate Conversion Kit is available for upgrading the belt-driven Titan X50B to the all-out performance levels of the torque tube Titan X50

TTRE0073 Titan X50 Kit w/Torque Tube Tail
 TTRE0074 Titan X50 Torque Tube Kit w/53H/Muffler/CF Blades
 TTRE4579 Titan X50B Torque Tube Conversion Kit
Main Rotor Diameter: 53 in (1345 mm)
Tail Rotor Diameter: 10.25 in (260 mm)
Fuselage Length: 47.25 in (1200 mm)
Weight (Fully Equipped): 7.16 lb (3250 g)

From the Experts:

Take full advantage of the efficient power transfer provided by the torque tube tail on the Titan X50! Everything about this amazing machine is designed to deliver ultra-smooth handling and adrenalin-pumping 3D performance with no limits. Step up to the Titan X50 equipped with the torque tube-driven tail and experience the difference for yourself!

Long story short...

With its proven torque tube-driven tail rotor and many other upgrades, the Titan X50 is the ultimate 50-class machine!



THUNDER TIGER



UNLEASH YOUR INNER AEROBAT!

RAPTOR

E720 EP Heli

G4



- Mounting the motor higher and positioning the battery tray between the frames allows for easier interior access and improved balance and CG
- A helical main gear transfers torque more efficiently, and provides more surface area for added strength
- The Quick-Calibration System makes setup a snap
- Available in two versions: traditional flybar design and one with cutting-edge flybarless technology

TTRE0093 Raptor G4 E720 Electric Heli
 TTRE0094 Raptor G4 E720 Electric Heli-Flybarless
 Main Rotor Diameter: 63 in (1604 mm)
 Tail Rotor Diameter: 11 in (280 mm)
 Fuselage Length: 53.3 in (1354 mm)
 Flying Weight: 8.27 lb (3750 g)



THUNDER TIGER

TTRE0093
 Raptor G4 E720
 Electric Heli



TTRE0094
 Raptor G4 E720
 Electric Heli-Flybarless



From the Experts:

Precision aerobatics and 3D competition can be intense. It demands a heli that's superbly engineered — and the Raptor G4 E720 takes full advantage of Thunder Tiger expertise and innovation to meet the challenge of performing precise aerobatic maneuvers. And even with advancements such as the Quick-Calibration System, strategic motor and battery positioning and helical main gear, the Raptor G4 E720's flying weight is up to one pound less than comparable helis!

Long story short...

The Raptor G4 E720 raises the bar for competition machines — in versions both with and without a flybar!

THIS AXE IS CUTTING-EDGE!



AXETM 2.4GHz CP



The Hiller mixing head offers smooth, precise control, and its lower parts count makes it easy to repair.



The direct drive-equipped tail rotor delivers quick response, and is powered by a durable N60 motor.

HMXE0810 Axe CP 2.4GHz EP Heli RTF
Rotor Diameter: 21.5 in (546 mm)
RTF Weight w/battery: 16.8 oz (476 g)
Length: 22 in (559 mm)

Heli-Max[®]

- Comes with a 5-channel 2.4GHz radio that features dual rates
- The 11.1V 1050mAh LiPo battery is equipped with Deans[®] Ultra Plug[®] and balancing connectors
- An AC wall charger with balancing function is included
- Included training gear helps build confidence during the learning process

Deans[®] and Ultra Plug[®] are registered trademarks of W.S. Deans Co. U.S. Patent No. 5,533,915

From the Experts:

With features such as a 2.4GHz radio, simplified rotor head design, LiPo battery and anodized aluminum parts, it's easy to see why the Axe CP 2.4GHz stands out. It comes completely assembled, with virtually everything included — right down to the training gear. With just a little coaxial or fixed pitch experience you'll be confidently flying the Axe CP 2.4GHz and enjoying its fully aerobatic capabilities in no time.

Long story short...

The Axe CP 2.4GHz comes with everything today's heli pilot wants for sure-fire success and flying fun!



GREAT O.S. REBATE

4-STROKE/GAS ENGINES

Extraordinary engines...and up to \$100 in FREE merchandise!

Through the end of this month when you buy any of the O.S. 4-stroke or gas engines listed here, you'll receive a certificate for **up to \$100** that you can redeem for quality merchandise from nearly 30 top brands!

\$100 Merchandise Certificate



FR7-420 Sirius-7

OSMG1160 FT160Twin
OSMG1250 FT300Twin
OSMG1307 FR7-420 Sirius-7
OSMG1320 FF320

**Virtually every
O.S. 4-stroke and
gasoline power
plant is included –
imagine what you
could get with a
certificate worth
up to \$100!**

\$50 Merchandise Certificate



GT55 Gas

OSMG0979 FS200S w/Pump
OSMG0980 FS200S
OSMG0991 FS110-a w/Pump
OSMG0998 FS155-a w/Pump
OSMG1555 GT55 Gas

\$30 Merchandise Certificate



FS81-a

OSMG0877 FS72-a
OSMG0898 FS62V
OSMG0900 FS95V
OSMG0930 FS120SE
OSMG0935 FS120III w/Pump

OSMG0956 FS56-a
OSMG0981 FS91-a
OSMG0982 FS81-a w/Pump
OSMG0990 FS110-a

**Hurry...this offer ends
Dec. 31, 2011!**

\$20 Merchandise Certificate



FS30S

OSMG0830 FS30S
OSMG0845 FS40S

O.S. ENGINE
UNEQUALLED QUALITY PRECISION & PERFORMANCE

Available only at participating hobby dealers in the U.S. and Canada. Rebates apply to purchases made between October 1 and December 31, 2011. Rebates are not distributed in stores. Rebate request forms and official rules are available at osengines.com. All required materials to receive the merchandise certificate must be submitted by January 31, 2012.

GET A 2ND FASST RECEIVER ABSOLUTELY FREE!

...BUT YOU HAVE TO ACT NOW!

This promotion now ends December 31, 2011!



A \$119.99
retail value!

A \$124.99
retail value!

Futaba®



The response has been so overwhelming for this offer that we have decided to continue it through the end of 2011! When you purchase select Futaba FASST radios from now through December 31, 2011 you'll receive a 2nd 2.4GHz receiver ABSOLUTELY FREE!

It's easy: simply buy a FASST 7C, 8FG Super, 10CG, 12FG, 12Z or 14MZ aircraft radio or 4PKS surface system by December 31, 2011, and you'll get a 2nd receiver AT NO EXTRA CHARGE — on the spot! You'll receive a 2nd R617FS receiver with an aircraft system, or a 2nd R603FS receiver when you buy a 4PKS radio.

There's no form to fill out, and nothing to send in. These receivers retail for as much as \$124.99 — making this an opportunity you can't afford to pass up!

Get a FREE FASST receiver with any of these FASST systems!

- | | |
|----------|-------------------|
| FUTK7000 | 7CA (4)3152 |
| FUTK7001 | 7CH (4)3152 |
| FUTK7002 | 7CA (4)3004 |
| FUTK7004 | 7CA Tx/Rx |
| FUTK7005 | 7CH Tx/Rx |
| FUTK8010 | 8FGA Super |
| FUTK8011 | 8FGH Super |
| FUTK9255 | 10CAG Air Mode 2 |
| FUTK9256 | 10CHG Heli Mode 2 |
| FUTK9257 | 10CAG Air Mode 1 |
| FUTK9258 | 10CHG Heli Mode 1 |
| FUTK9275 | 12FGA |
| FUTK9276 | 12FGH |
| FUTK9300 | 12ZAP |
| FUTK9301 | 12ZHP |
| FUTK9400 | 14ZAP |
| FUTK9401 | 14ZHP |
| FUTK4901 | 4PKS |

Available only at participating hobby shops in the U.S. and Canada through December 31, 2011, or while supplies last. This is not a rebate offer and is not retroactive. You will receive your Free receiver at the point of sale. There are no substitutions.

PURCHASE A DURATRAX MOTORCYCLE — & POWER IT UP FOR FREE!

THIS MONTH ONLY – purchase a 1/5 scale Duratrax DX450 or DXR500 motorcycle by December 31, 2011, and get a FREE Onyx Battery!



Lean in to the turns and blaze down the straightaways with the DXR500...



DTXD04**



...or abandon the asphalt and take the DX450 across dirt, grass and gravel!



DTXD02**

A \$32.99 retail value!



DTXC2054

FREE!

Onyx™ 6C 7.2V 3000mAh NiMH Battery

It's the perfect power source for your big, bold bike!

Offers end December 31, 2011!

GET MORE MERCHANDISE WHEN YOU BUY A GREAT CHARGER!

Triton EQ Series chargers are the chargers of choice for modelers, and for good reason! They're easy to use, can handle any type of battery, offer AC/DC convenience and come with built-in balancing to maximize battery power and capacity.

And now through December 31, 2011 when you purchase a TritonEQ or Triton2 EQ, you can receive a certificate worth up to \$30 on quality merchandise from nearly 30 top R/C brands!



These chargers have all the features you want!

TritonEQ™ AC/DC Charger w/Balancer

\$20
Merchandise Certificate



GPMM3155

Triton2™ EQ AC/DC Charger w/Balancer

\$30
Merchandise Certificate



GPMM3156

Available only at participating local hobby shops in the U.S. and Canada. Rebates apply to purchases made between October 1 and December 31, 2011. Rebates are not distributed in stores. Rebate request forms and official rules are available at electrifly.com. All required materials to receive the merchandise certificate must be submitted by January 31, 2012.

LAST MONTH TO GET FREE STUFF!

Purchase an ElectriFly plane
and get FREE glue!



Citabria EP ARF
GPMA1127

Purchase any of these fun-to-fly ElectriFly park/slow flyers and get a FREE bottle of Great Planes® Foam-Safe CA glue!

A \$7.99 retail value!

- GPMA1107 FlyLite™ EP ARF
- GPMA1127 Citabria EP ARF
- GPMA1128 Edge 540 3D EP ARF
- GPMA1129 Extra 330SC 3D EP ARF
- GPMA1130 Pluma™ 3D EP ARF
- GPMA1131 Yak 54 3D EP ARF
- GPMA1133 Sopwith Pup EP ARF
- GPMA1134 deHavilland Tiger Moth EP ARF
- GPMA1135 VFO Sport/3D EP ARF
- GPMA6004 FlyLite EP Rx-R™



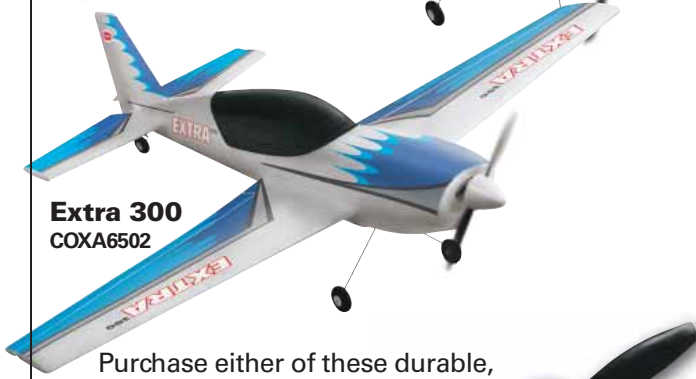
GPMR6069

ElectriFly®

Purchase a Cox Sky Ranger or Extra 300
and get a FREE prop!



Sky Ranger®
COXA6501



Extra 300
COXA6502

Purchase either of these durable, affordable favorites and get an extra prop absolutely FREE!

A \$5.99 retail value!



COXQ5808



Don't miss out on these super offers — after December 31, 2011 they're gone!

Purchase a TrakPower Soldering Station
and get FREE Silver Solder!



TK-950 Soldering Station

TKPR0950

TKPR0975

Get a FREE package of Rosin Core Silver Solder when you buy the industry's best soldering iron!

An \$11.99 retail value!

TrakPower™
SPEED EQUIPMENT

Purchase an Onyx charger
and get a FREE Onyx NiMH battery!



Onyx 235
DTXP4235

DTXC2035

Get a versatile Onyx NiMH battery when you buy any of these "value-packed" Onyx sport chargers!

A \$19.99 retail value!

- DTXP4230 Onyx 230 AC/DC Advanced Charger w/LCD
- DTXP4235 Onyx 235 AC/DC Advanced Charger w/Balancing
- DTXP4245 Onyx 245 AC/DC Dual Charger w/Balancing

Duratrax®

THIS CHRISTMAS, GIVE GREAT R/C GIFTS FOR THE FUN OF IT!

Great RC Gifts
For the FUN of it!



TURN HERE FOR GENERAL HOBBY PRODUCTS

Lots of fun...for not a lot of money!

With a radio-controlled model you can put yourself in the cockpit of your own airplane or helicopter, behind the wheel of your own car or truck, or at the helm of your own boat. And almost all of the models shown here are under \$100!

No experience? No problem!

These models are all designed with the beginner in mind. There's little or no assembly, and they're easy to operate. And unlike toy-like models, they're durable enough to withstand first-timer mishaps.

This is "almost anywhere" R/C!

All you need is a park, playground, backyard, cul-de-sac or small pond to have fun with any of these models, either by yourself or with friends. Some can even be enjoyed indoors!

Look for these fun-filled R/C products on display at your local hobby shop!

- AQUB1805 AquaCraft® Minimono Brushless 2.4GHz Boat RTR
- TTRD76** Thunder Tiger® Phoenix STII 2.4GHz Buggy RTR
- DTXD32** Duratrax® Evader™ EXT2 Stadium Truck RTR
- GPMZ4220 Great Planes® RealFlight® Basic R/C Flight Simulator
- HCAA2560 Flyzone™ Überlite™ Micro Flyer RTF
- DTXP4615 Duratrax Battery/Charger Combo
- COXA6503 Cox® Sky Cruiser™ EP Glider RTF
- HCAA2552 Flyzone Micro Super Cub Plane RTF
- HMXE13** Heli-Max® Axe™ CX Nano 2.4GHz Heli RTR
- RMXE3961 Revell® Proto™ CX Heli RTF

They make great gifts for a friend, family member...or yourself!

PINEWOOD DERBY

RACING ACCESSORIES

Gear up for racing season.
New accessories are here!



RMXY8636



RMXY8637

RMXY8638



RMXY8647



RMXY8643



RMXY8641



RMXY8640

- **Car Parts Accessory Pack C** lets you soup up your racer's looks, affordably! Includes two fenders, two exhausts and one machine gun.
- **New EZ Body™** stock car bodies are factory-finished, for ultimate time savings.
- Handy **Tech Station™** checks your vehicle's width, length and ground clearance, ensuring the best possible performance on race day.
- **Racer Series™** and **Trophy Series™** Kits include a car and official wheels.
- **Stock Car Trophy Series Kit** also comes packaged with paints and brushes!

RMXY8636
RMXY8637
RMXY8638
RMXY8647
RMXY8640
RMXY8641
RMXY8643

Car Parts Accessory Pack C
EZ Body Stock Car A
EZ Body Stock Car B
Tech Station
Sports Car Racer Series Kit
Hot Rod Racer Series Kit
Stock Car Trophy Series Kit



Long story short...

Dominate the derby circuit with the latest round of Revell Pinewood Derby® products!



1/24 SCALE TOM "MONGOOSE" MCEWEN RAIL DRAGSTER

The "Mongoose's" rip-roarin' record-setter.

Nearly 20 years after his retirement, Tom McEwen remains one of racing's most popular drivers. On their own, the sheer number of wins throughout his 45-year career is impressive – but his list of records is even more extraordinary. McEwen set many elapsed time records at the helm of this 1974 "digger" dragster, which you can recreate with this detailed Revell kit! **Kit features** a full one-piece chassis frame, removable body panels, a detailed starter's "Christmas tree," a seated Tom McEwen figure, a standing crewman figure, soft tires and ignition wires.

RMXS4908 Total parts: 101 Skill level 2 Length: 10.2 in (259 mm)



1/25 SCALE CORVETTE® C5-R™ "COMPUWARE®" V-8-powered victory.

2003 marked the 50th anniversary of the Chevy® Corvette, one of the world's most beloved sports cars. That same year, the Corvette Racing team fought to win American Le Mans Series for the third season in a row. The Prodrive® Ferrari® team proved to be serious competition for Corvette Racing. By the end of the season, however, it was Corvette who emerged victorious. **Kit features** full engine, chassis and roll cage detail; a one-piece, lift-off body; soft black tires and decals for the 2003 Le Mans version (including interior details).

RMXS4941 Total parts: 97 Skill level 3 Length: 7.4 in (187 mm)



1/48 SCALE APOLLO LUNAR SPACECRAFT SET

Making mankind's "giant leap" possible.

Man's dream of walking on the moon came true on July 20, 1969, when Neil Armstrong and Edwin "Buzz" Aldrin set foot on the lunar surface. While the Command and Service modules brought them to their destination, the Lunar module made mankind's "giant leap" a reality. Set contains three kits representing the Command, Service and Lunar modules. The Lunar module comes with interior details and the top section of the Saturn Launch Vehicle. **Includes** seated, standing and fully equipped astronaut figures; an Eagle lunar display base and authentic Apollo decals.

RMXS5090 Total parts: 171 Skill level 3



1/48 SCALE F-100 SUPER SABRE

The rugged, dependable "Hun."

Introduced in September 1954, the F-100 Super Sabre was the United States Air Force's first supersonic fighter. The F-100 could sustain speeds exceeding Mach 1 in level flight for extended periods of time. The fighter's high-speed performance made it ideal for air support early in the Vietnam conflict. **Kit features** Bull Pup missiles, bombs, drop tanks and decals for two versions: 1. F-100D-30-NA, 55-3712, Pahoee Tiger, 308th TFS, 31st TFW Beinh Hoa, Vietnam, December 1955 and 2. F-100D-90-NA, 56-3221, 494th FBS, 48th TFW, Weapons Team, Chaumont Air Base, France, 1958.

RMXS5318 Total parts: 91 Skill level 2 Length: 13.7 in (348 mm)
Wingspan: 9.8 in (248 mm)



1/48 SCALE LOCKHEED® PV-1 VENTURA™ WWII's patrol-bombing beauty.

Built especially for the U.S. Navy, the PV-1 Ventura featured special equipment for patrol-bombing, including ASD-1 search radar and increased fuel capacity. **Kit features** recessed panel line detail, an optional "chin gun", a movable bomb bay compartment with full load, separate wing tanks and decals for three versions: 1. U.S. Navy PV-1, BuNo. 48895, Patrol Bombing Squadron VP-133, Iwo Jima, 1945; 2. U.S. Navy PV-1, BuNo. 48891, Pilot Lt. "Butch" Mason, Patrol Bombing Squadron VP-135, Attu, Alaska, 1943 and R.C.A.F. Ventura of No. 149 Squadron, Prince Rupert, British Columbia, 1943.

RMXS5531 Total parts: 143 Skill level 3 Length: 12.8 in (325 mm)
Wingspan: 16.3 in (413 mm)



NEW RELEASES

MONOGRAM® 1/25 SCALE '64 PONTIAC® GTO® 2 'N 1 Conceived in secrecy, with surprising results.

Designed by engineers Russell Gee, Bill Collins and John DeLorean, the Pontiac GTO combined a mainstream muscle car with race-caliber performance. The project was shrouded in so much secrecy, not even the top brass at GM® knew about it! Sales were first limited to 5,000 units. However, the GTO was such a success that, by the end of the year, 32,450 cars had been sold. This 2 'n 1 **kit features** multiple engine component options, multiple hood options, multiple wheel options, soft black tires, chrome-plated parts and "street machine" decals.

MONS0890 Total parts: 132 Skill level 2 Length: 8.4 in (214 mm)



MONOGRAM® 1/48 SCALE B-24J LIBERATOR Bomb targets with strategic superiority.

The 8th Air Force took advantage of the B-24's bigger bomb loads while fighting against Germany. The 15th Air Force employed them to hit hard-to-reach targets near the Mediterranean. **Kit features** full interior detail with a bomb bay and bomb rack, a ground transport tractor, crew figures and decals for two versions: 1. "Kentucky Belle," B-24J, 44-40268, 706th Bombardment Squadron, 446th Bombardment Group, 8th Air Force, based at Bungay, Suffolk, England and 2. "Patches," B-24J, 42-51978, 756th Bombardment Squadron, 459th Bombardment Group, 15th Air Force, Giulia Field, Cerignola, Italy, 1944.

MONS5629 Total parts: 165 Skill level 2 Length: 17.8 in (450 mm)
Wingspan: 27.4 in (695 mm)



SLOT CAR

MONOGRAM® 1/32 SCALE '66 DODGE® CHARGER® #6 PEARSON Racing's very own "Silver Fox."

For his first-full time season, David Pearson drove a '66 Dodge Charger that was prepared by popular driver and owner Cotton Owens. During this season, Pearson won 15 of the 49 NASCAR® events held that year, which was the second-highest total in the sport's history. By the season's end, Pearson was celebrating his first NASCAR championship win. He went on to earn two more championship wins in 1968 and 1969. This highly collectible slot car features super-fine details, and is compatible with virtually all commercial track systems.

MONW4842 Length: 6.4 in (162 mm)





1/76 SCALE BRITISH INFANTRY, WWII

Destined for D-Day derring-do.

On June 6, 1944, Allied troops took part in the most ambitious military invasion ever devised. Operation Overlord included British infantry regiments that forced the defenders out of landing zones and beaches Juno, Sword and Gold. **Kit features** 54 unpainted, unassembled soldier figures, featuring 16 action poses and assorted combat accessories (including a mortar and bipod).

RVLS2597 Total parts: 56 Number of figures: 54



1/76 SCALE AMERICAN INFANTRY, WWII

Paying tribute to the "Greatest Generation."

When the U.S. entered World War II on December 8, 1941, Allies superiority in man power and equipment over the Axis power. Endless columns of well-equipped and trained GI's supported by guns, tanks and aircraft, were a major factor in the defeat of Germany and Japan. **Kit features** 49 unpainted, unassembled soldier figures in 17 action poses. Combat accessories include a mortar and a bipod.

RVLS2599 Total parts: 51 Number of figures: 49



1/35 SCALE GTK BOXER (GTFZ)

Built for stealthy surveillance.

The 2011 Boxer is a motorized armored transport vehicle that outshines all others in its class. The modular Boxer can carry up to eight fully equipped troops. Armament is provided by the FLW 200 weapons platform. Kit is modeled in the "driving" position. **Features** include detailed and finely engraved surface areas, a detailed chassis, realistic module construction, a movable FLW 200 weapons platform with optional 12.7 mm machine guns and a 40 mm machine grenade launcher, a smoke discharge unit, a movable driver's hatch, rubber tires and four decal options.

RVLS3093 Total parts: 223 Skill level 5 Length: 8.9 in (227 mm)



1/72 SCALE ARADO AR 196 A-3

Flying high on ship-shape recon.

Many aircraft experts consider the Arado Ar 196 to be one of the best floatplanes to emerge from the Second World War. The Luftwaffe used the Ar 196 primarily for reconnaissance missions, but it was often used to hunt enemy submarines as well. However, the Luftwaffe wasn't the only air force to benefit; Bulgaria, Finland and Norway also took advantage of the Ar 196's superior flight characteristics. **Kit features** structured surfaces, a detailed cockpit with instrument panel, twin machine guns, floats, a rotating propeller and decals for two Luftwaffe aircraft.

RVLS3994 Total parts: 43 Skill level 3 Length: 6 in (153 mm)
Wingspan: 6.9 in (174 mm)



1/144 SCALE F-15E STRIKE EAGLE

America's ferocious all-weather fighter.

The F-15E Strike Eagle has been the U.S. Air Force's "go-to" all-weather fighter for over 20 years. It has participated in some of the most important military campaigns in recent history, including Operation Desert Storm, Operation Iraqi Freedom and Operation Odyssey Dawn. **Kit features** new molding, detailed surfaces with engraved panel joints, a cockpit with instrument panel and ejector seats, a detailed undercarriage, two underwing tanks, four Sidewinder guided missiles and a Super Decal set featuring United States Air Force markings.

RVLS3996 Total parts: 62 Skill level 3 Length: 5.2 in (132 mm)
Wingspan: 3.5 in (89 mm)



1/100 SCALE HAWKER® HARRIER® GR.9 "EASY-KIT®"

Fully equipped and ready for battle.

The Harrier GR.9 comes equipped for action with the Integrated Weapons Program. It's an extensive avionics and weapons upgrade package that allows the GR.9 to carry the latest smart weapons, inertial navigation systems, Sniper targeting pods and INS/GPS navigation systems. The RAF retired the Harrier GR.9 in March 2011, replacing it with the Eurofighter Typhoon and the F-35C. This easy-to-assemble **kit features** snap-together construction, painted plastic parts and peel-and-stick decals featuring specially selected livery.

RVLS6645 Total parts: 35 Skill level 2 Length: 5.5 in (140 mm)
Wingspan: 3.7 in (93 mm)



1/24 SCALE MERCEDES-BENZ® 540K CABRIOLET A

First-class, lightning-fast.

Produced from 1935-1940, the Mercedes-Benz 540K was powered by a 180 hp, 5.4L 8-cylinder engine. Boasting a top speed of 105 mph (170 km/h), it was one of the fastest cars of its time. The 540K's sleek, impeccable design made it a hit with royalty and movie stars alike. **Kit features** a one-piece chassis, a detailed 8-cylinder compressor engine with chrome inlet pipes, a chrome radiator, a detailed interior and dashboard panel, the option of having the top in the "up" or "down" positions, white-band tires, chrome spoked rims and authentic decals.

RVLS7001 Total parts: 111 Skill level 3 Length: 8.4 in (213 mm)



1/25 SCALE PORSCHE® CARRERA® RS

Speedy. Sporty. Spiffy.

Introduced in 1972, the Porsche Carrera RS was built for one reason: speed. Its 200 hp, 6-cylinder engine could exceed 150 mph (240 km/h). Today, the Carrera RS remains as popular as ever with collectors. **Kit features** a one-piece body, a detailed chassis, a multi-part six-cylinder engine with separate air filter, filigree shock absorbers and wheel suspensions, a multi-part "Spartan" interior with authentic dashboard, a separate hood, separate bumpers, a realistically reproduced rear spoiler, extensive chrome parts and decals with international markings (D, GB, F, NL, I, CH and B).

RVLS7004 Total parts: 84 Skill level 3 Length: 6.9 in (174 mm)





1/24 SCALE VW® GOLF GTI

A tuned-up, head-turning fan favorite.

The VW Golf GTI combined sizzling sports car performance with the sensible design of an everyday hatchback. Available options included a 16V intake bridge and a grille with decorative red frames. This 1980s **kit reissue features** a one-piece body with fine surface details, a multi-part four-cylinder engine, a detailed chassis with wheel suspension, an opening hood, an optional sunroof, an interior with dashboard detail, a front grille with twin headlights and international marking decals (D, NL, F, CH, I, GB, S, A, DK and B).

RVLS7005

Total parts: 67

Skill level 3

Length: 6.6 in (167 mm)



1/24 SCALE IVECO® STRALIS®

Iveco Magirus' flagship hauler.

Introduced in 2002, the Iveco Stralis is the company's flagship heavy-duty hauler. It was preceded by the popular EuroTech and EuroStar models, which have since been discontinued. All Stralis semis are powered by four-valve straight-six engines with pump-nozzle fuel injection. The Iveco Stralis is also notable for being the first heavy-duty semi to offer the automated EuroTronic gearbox as standard equipment. **Kit features** the normal roof version with the active space cab.

RVLS7405

Length: 10 in (254 mm)



1/16 SCALE '34 PHANTOM II CONTINENTAL

Live in the lap of luxury.

The 1934 Rolls-Royce® Phantom II Continental combined sophistication and luxury like no other car that came before it. Only 280 were ever produced, making them highly popular with today's car collectors. **Kit features** multi-part bodywork with finely structured surfaces, a multi-part six-cylinder engine with separate cables, a detailed interior with an authentic dashboard, textured seats and a separate rear bench; an opening hood, opening doors, front/rear leaf springs, turning wheels, countless chrome parts (including the "Spirit of Ecstasy" grille), realistic rims and authentic decals.

RVLS7459

Total parts: 179

Skill level 5

Length: 13.6 in (345 mm)



1/16 SCALE 1912 FORD® MODEL T

Efficiency to a "T."

Deliberately designed for simple operation and easy repair, the first Fords were efficient to a "T." To keep production costs down, Ford only made the Model T available in black from 1914 until 1925. By the time the final Model T's rolled off the assembly line in 1927, 15 million had been released. **Kit features** a large-sized chassis, multi-part bodywork, a three-part radiator, a textured multi-part roof, movable doors, textured seats, transverse leaf springs, steerable front wheels, rotating spoke wheels, six lamp sockets, extensive gilded chrome parts and authentic decals.

RVLS7462

Total parts: 126

Skill level 3

Length: 8.9 in (226 mm)



1/24 SCALE LONDON BUS

England's dynamic double-decker.

Mention London, and most people will think of the Queen, Big Ben and double-decker buses. The most iconic double-decker bus of them all is the AEC Routemaster. Introduced in 1956, this British staple was developed in conjunction with London Transport, the bus' primary customer. Nearly 3,000 Routemasters were built before their official 2005 retirement, but a select few Routemasters remain in use on two London heritage routes. An updated version is anticipated to hit the streets in 2012.

RVLS7651 Total parts: 150 Skill level 4 Length: 11.3 in (286 mm)



NEW RELEASES

Hobby kits

1/12 SCALE 2001 HONDA® NSR250 "TEAM TELEFÓNICA® MOVISTAR® HONDA" (2001 WGP250 CHAMPION DAIJIRO KATO)

Grand Prix-winning greatness.

The Honda NSR250 debuted in 1985, and went on to capture eight 250 cc class world championship titles with six different riders. In 2001, Japan's Daijiro Kato became the last of these NSR250 riders to earn the prestigious title. Kato was at the top of his game, winning eleven of the circuit's sixteen races. He set a record for the most points in a single season (322), and became a legend in the process. **Kit features** new tooling and markings for the 2001 WGP250 Champion Machine #74, rider Daijiro Kato.

21502 HSGS1502 Total parts: 167 Skill level 3



1/72 SCALE EA-18G GROWLER

Carrier-based electronic warfare.

The EA-18G Growler is the latest evolution of the popular F/A-18F Super Hornet, designed especially for electronic warfare. The U.S. Navy's VAQ-129 electronic attack squadron was the first to receive the Growler in 2008. The following year, VAQ-129 and VAQ-132 executed the Growler's first carrier-assisted landing at sea aboard the U.S.S. Harry S. Truman (CVN-75). **Kit features** new weapons and equipment, "Block II" modification parts and two marking options: 1. U.S. Navy COMVAQWINGPAC (VAQ-132) "Scorpions" CO, Code: NL540, 2010 and 2. U.S. Navy COMVAQWINGPAC (VAQ-129) "Vikings" CVWP, Code: NJ550, 2008.

01568 HSGS1568 Total parts: 177 Skill level 3



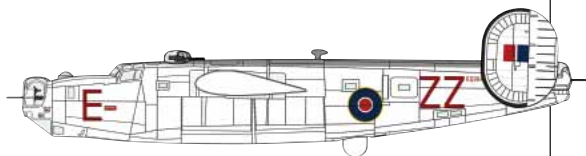
1/72 SCALE P-51B/C MUSTANG "TUSKEGEE AIRMEN"

WWII's most celebrated fighter pilots.

The Tuskegee Airmen were first equipped with P-40 Warhawks, P-47 Thunderbolts and P-39 Airacobras. However, the P-51 Mustang became the group's signature aircraft. Operating with the Fifteenth Air Force in Italy, the Tuskegee Airmen used their skills to protect bombers from enemy fighters. This limited edition **kit features** two marking options: 1. P-51B/C: U.S.A.A.F. 332nd F.G./15th A.F., 99th F.S. Capt. Edward Toppins, Code: A0-0, Italy, August 1944 and 2. P-51C: U.S.A.A.F. 332nd F.G./15th A.F., 302nd F.S. Lt. Lee Archer, Code: 72, Italy, July 1944. **Includes** a bonus P-51D decal sheet.

01957 HSGS1957 (Limited Edition) Total parts: 51 Skill level 3





1/72 SCALE B-24J LIBERATOR "COASTAL COMMAND" Hunt U-boats with the R.A.F.

The R.A.F. Coastal Command was established in 1936 as the Royal Air Force's naval aviation arm. Once WWII broke out, the unit's primary role was to protect convoys from attacks by German U-boats. Pilots would often equip their B-24 Liberators with ASV radar and Leigh lights to hunt U-boats in all weather conditions. This limited edition **kit features** new ASV radar parts and two marking options: 1. Royal A.F. Coastal Command No. 220 Sq., Code: ZZ-E, April 1945 and 2. Royal A.F. Coastal Command, Code: TF.

01960 HSGS1960 (Limited Edition) Total parts: 211 Skill level 3



1/72 SCALE F-4F & F6F "PACIFIC ACES COMBO" Two Grumman greats, one astonishing set.

The F-4F Wildcat and the F-6F Hellcat were favorites of Pacific flying aces. The most celebrated of them all was Capt. Joe Foss, who tied Eddie Rickenbacker's 26 kills to become America's first WWII ace. This limited edition **kit combo features** one F4F-5 Wildcat kit with one marking option: 1. U.S. Marine "VMF-121," Capt. Joseph Jacob Foss, Code: 50/84/53, 1942 and one F6F-5 Hellcat kit with two marking options: 1. U.S. Navy U.S.S. Essex "VF-83," Code: 115, May 1945 and 2. U.S. Navy U.S.S. Cabot, "VF-31," Code: 12, Sept. 1944.

01964 HSGS1964 (Limited Edition) Total parts (F4F-4): 34; (F6F-5): 38 Skill level 3



1/72 SCALE MANNED RESEARCH SUBMERSIBLE SHINKAI 6500

Dive for record-setting research.

The Shinkai 6500 deep-submergence vehicle was completed in 1990. It's notable for having a depth range of 21,300 feet (6,500 m), far surpassing manned research vehicles from all over the world. Launched from the Yokosuka, the Shinkai 6500 is owned and operated by JAMSTEC (Japanese Agency for Marine Earth Science and Technology). The Shinkai 6500 has been used on over 1,250 operations in just over 20 years. **Kit features** new tooling and clear parts for creating a display stand.

54001 HSGS5401 Total parts: 55 Skill level 3



1/32 SCALE FOCKE-WULF FW 190A-7 "JG1 STRIPE NOSE"

Jagdgeschwader 1's most distinctive fighter.

The Luftwaffe's Jagdgeschwader 1 fighter wing was formed in eastern Prussia in May of 1939. From 1940-1942, JG 1 took on Allied aircraft across the Western front and northern Europe. For WWII's remaining years, JG1 provided air support for the Wehrmacht, protecting German industries from Allied attacks. Experts estimate that JG1 shot down 700 enemy aircraft before WWII's end. This limited edition **kit features** new fuselage rack and pitot tube parts, plus two marking options: 1. Luftwaffe 2./JG1 Black-3, Germany, January 1944 and 2. Luftwaffe 3./JG1 Yellow-6, Germany, January 1944.

08217 HSGS8217 (Limited Edition) Total parts: 103 Skill level 3

1/32 SCALE MESSERSCHMITT BF 109G-2 TROP "MARSEILLE"

A high-flying ace returns, in rare 1/32 scale form.

Hans Joachim Marseille ranks among the most-decorated Luftwaffe aces of the WWII era. His flying skills were so highly regarded that Germans nicknamed him the "Star of Africa." While flying with Jagdgeschwader 27 (JG 27) in North Africa, Marseille scored 151 "kills" – over 95 percent of his total combat victories. This limited edition **kit features** trop-filter parts, machine gun panel parts, detailed landing gear and one marking option: 1. Luftwaffe 3./JG 27 Staffelkapitän Hauptmann Hans-Joachim Marseille, Code: 14, North Africa, September 1942

08219

HSGS8219 (Limited Edition)

Total parts: 113 Skill level 3



1/48 SCALE NAKAJIMA KI-44-II SHOKI (TOJO) "SHINTEN SEIKU TAI"

Japan's "Sky Shadow" air regiment.

Powered by the Ha-41 14-cylinder double-row radial engine, the Nakajima Ki-44 was designed with high speeds and fast climbing in mind. It's no wonder this aircraft was a favorite of the 47th Sentai. Nicknamed "Shinten Seiku Tai" ("Sky Shadow), the 47th Sentai was based out of the Narimasu airfield. This limited edition **kit features** a detailed canopy and two marking options: 1. Type II Otsu: I.J.A.A.F. 47th F.R. Shinten Seikutai, Code: 32, Narimasu A.B. and 2. Type II Otsu or Hei: I.J.A.A.F. 47th F.R. Shinten Seikutai, Code: 36, Narimasu A.B.

09958

HSGS9958 (Limited Edition)

Total parts: 83 Skill level 3



1/48 SCALE S-61A SEA KING "J.M.S.D.F."

The "king" of Search-and-Rescue helis.

Since 1961, the Sikorsky® Sea King has served a variety of roles with air forces all over the world. The S-61A is a special version built under license by Mitsubishi®, for use by the Japan Maritime Self-Defense Force (J.M.S.D.F.). The J.M.S.D.F. currently employs 18 S-61As to serve as a utility heli and for Search-and-Rescue missions. This limited edition **kit features** a new searchlight, outer resin intake fuselage parts and two marking options: 1. J.M.S.D.F. Atsugi Rescue Squadron, Code: 44 and 2. J.M.S.D.F. Ozuki Rescue Squadron, Code: 51.

09959

HSGS9959 (Limited Edition)

Total parts: 195 Skill level 3



1/48 SCALE F/A-18E SUPER HORNET "CHIPPY HO"

Enlist with Strike Fighter Squadron 195.

The "Dambusters" transitioned to the F/A-18E Super Hornet in the fall of 2010. As part of Carrier Air Wing 5, VFA-195 is currently the only U.S. Navy fighter wing to have its fleet consist solely of Super Hornets. A Boeing® contract signed by the U.S. Department of Defense stipulates that American fleets will receive 66 more Super Hornets over the next four years, totaling 515 in all. This limited edition **kit features** modified "Block II" parts and one decal marking option: 1. U.S. Navy VFA-195 "Dambusters" CAG, Code: NF400, 2011.

09960

HSGS9960 (Limited Edition)

Total parts: 240 Skill level 3





1/48 SCALE F-104G STARFIGHTER "CCV" The Control-Configured, fly-by-wire fighter.

Maneuverability is everything. That's why MBB (Messerschmitt-Bölkow-Blohm) developed the F-104G CCV (Control-Configured-Vehicle). This fly-by-wire variant mounted an extra tail wing behind the cockpit and offered computer-controlled avionics. The F-104G/CCV can be seen at Germany's Wehrtechnische Studiensammlung Koblenz. This limited edition **kit features** a canard with a resin vertical wing, fairings, sensors, metal pitot tube parts and three marking options: 1. West German A.F. CCV, Code: 98 & 36; 2. West German A.F. CCV, Code: 98 & 36 (without rear fairing) and 3. West German A.F. CCV, Code: 23 & 91.

09961 HSGS9961 (Limited Edition) Total parts: 152 Skill level 3



1/48 SCALE F-16A® FIGHTING FALCON® "ISRAELI AIR FORCE" Scored the first F-16 "kills."

The Israeli Air Force is the world's second-largest operator of F-16s, just behind the U.S. Air Force. Israel was among the first countries to receive the F-16A in 1981, courtesy of the American Foreign Military Sales arrangement Peace Marble I. By April of that year, the F-16 scored its first air-to-air "kills:" a Syrian Mi-8 and a MiG-21 "Fishbed." This limited edition **kit features** a new resin chaff/flare dispenser and antenna parts, plus one decal marking option: 1. Israeli A.F. 116th Sq. "Flying Wing," Code: 107.

09962 HSGS9962 (Limited Edition) Total parts: 103 Skill level 3

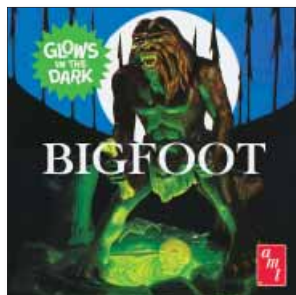
Plastic Models



AMT® 1/25 Scale Meyers "Manx" One dynamic dune buggy!

First produced in 1964, the Meyers "Manx" was designed by the famed engineer Bruce Meyers. The Manx is most famous for winning the first Mexican 1000 race and for appearing in the original The Thomas Crown Affair and a few Elvis Presley musicals. The final Manx rolled off the assembly line in 1971, but its influence can still be seen on today's dune buggies. This exciting reissue can be built four different ways. It **includes** the original box art, a cardboard display stand, black vinyl tires, chrome accessories and decals.

AMT651 AMTS0651 Skill level 2



AMT® 1/7 Scale Bigfoot Available for the first time in 30 years.

Bigfoot. Sasquatch. Wildman. Call him what you like, this ape-like humanoid has baffled and eluded scientists for centuries. Bigfoot is believed to measure 6-10 feet (2-3 m) in height and weigh at least 500 pounds (230 kg). He was last spotted posing for supermarket tabloid photos in 2007. No one knows where he will show up next! **Kit features** easy snap-together assembly. No paint or glue is required. Parts are molded in highly detailed brown and glow-in-the-dark plastic (many of the glow-in-the-dark parts are optional).

AMT692 AMTS0692 Skill level 1 Height: 10 in (254 mm)



AMT® 1/25 Scale NASCAR® 2010 Dale Earnhardt Jr.® #88 (Amp) Featuring easy snap assembly.

Founded by Bill France, Sr. in 1947, the National Association for Stock Car Auto Racing is the largest sanctioning body for stock car racing in the U.S. NASCAR events are among the most-watched pro sports events on television, with races broadcasted internationally in 150 countries. This easy-to-assemble Snap-It **kit features** a fully painted plastic body, a detailed interior, vinyl tires, rolling wheels and Amp Energy® sponsor graphics, available in your choice of easy-to-apply stickers and waterslide decals.

AMT709 AMTS0709 Skill level 1

Plastic Models

AMT® 1/25 Scale NASCAR® 2010 Jeff Gordon® #24 (Pepsi Max®)

Ready for the winner's circle, right out of the box.

With 85 Sprint Cup wins, 391 "top ten" places, 70 poles and millions of fans, there's no doubt that Jeff Gordon is one of NASCAR's most popular drivers of all time. His equally impressive Nationwide Series stats total at 5 wins, 32 top ten places and 12 poles in all. This easy-to-assemble Snap-It **kit features** a fully painted plastic body, a detailed chassis, a detailed interior, vinyl tires, rolling wheels and Pepsi Max sponsor graphics, available in your choice of easy-to-apply stickers and waterslide decals.

AMT710

AMTS0710

Skill level 1



AMT® 1/25 Scale Fruehauf® Forty-Foot Exterior Post Van

Revamped as a Retro Deluxe™ reissue.

The Fruehauf Trailer Company was founded in Detroit by August Charles Fruehauf in 1918. It all started after Fruehauf was asked to design a special trailer to haul lumber. Who knew that this humble "semi-trailer" would evolve into one of America's most-respected manufacturers? **Kit features** an operating "select-a-point" sliding suspension, opening rear doors, a fully detailed floor and body panels, four "spyder"-spoke wheel assemblies, two support options, eight vinyl tires, chrome parts, original packaging artwork and an expanded version of the original decal sheet. Truck tractor not included.

AMT711

AMTS0711

Skill level 3

Length (approx.): 18 in (457 mm)



AMT® 1/25 Scale 2012 Chevy® Corvette® Coupe

The Corvette craze lives on.

The Chevy Corvette is as popular as ever, nearly 60 years after the first models rolled off the assembly line. The Corvette was first unveiled at the 1953 GM® Motorama in New York City. The show's opening day attracted 45,000 visitors. Once the show completed its tour around the country, nearly 1.5 million car lovers had their first glimpse of the Corvette. Who knew that the Corvette would become such an iconic American classic? This "Showroom Replicas" **kit features** modern tooling, a "curbside" format, black vinyl tires and chrome accessories.

AMT756

AMTS0756

Skill level 2



MPC® 1/16 Scale Street Charger

Big. Bold. Beautiful.

The early '70s spawned a slew of muscle cars. Few were as fun to drive as the Dodge® Charger®. Third-generation models were distinguished by a rounded body and a split grille. Available options included a rear spoiler, a "Ramcharger" hood with air scoop and hidden headlights. This limited-production **kit features** a fully blown and injected engine with ignition, fuel lines and oil lines; a racing-inspired suspension; a removable hood; posable front steering; a detailed interior; hollow vinyl tires; chrome slotted mag wheels and custom stripe decals.

MPC768

MPCS0768 (Limited Edition)

Skill level 3



Polar Lights® Batman® 1/25 Scale Batmobile® Deluxe Edition

Build your favorite version from the classic TV show.

Fans familiar with the 1960s series "Batman" will, no doubt, recognize the iconic 1966 Batmobile. Designer George Barris had only three weeks to transform the rare 1959 Lincoln Futura concept car into a crime-fighting hot rod! **Kit features** a newly tooled body, exquisite interior and engine detail, parts to build the car as seen in all three seasons of the TV show, optional parts for big block and jet-turbine engines, a detailed trunk, optional stainless steel photo-etched parts, Batman and Robin® figures and a full decal sheet with striping.

POL881

PLLS0881

Skill level 3

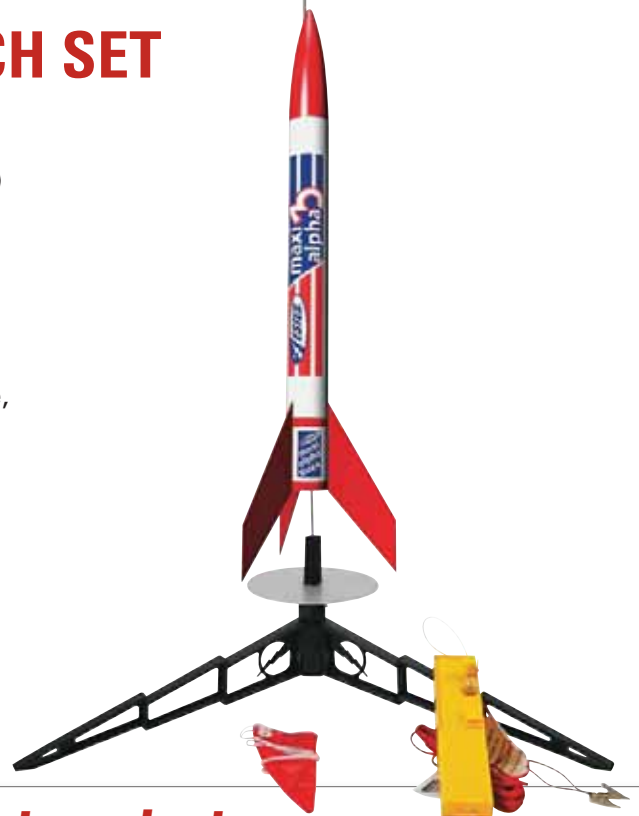


ESTES® MAXI ALPHA® 3 LAUNCH SET

Ready to launch in just a few hours.

- Rocket features a plastic nose cone, plastic fins, a 24" (61 cm) recovery parachute and self-adhesive decals. A 3/16" (5 mm) Maxi™ launch rod and a 1/8" (3 mm) standard launch rod are also included.
- Launch system includes an Electron Beam launch controller and a Porta-Pad II launch pad.
- Requires assembly, engines, igniters, recovery wadding, glue, plastic cement and red paint.
- Height: 33" (84 cm). Max. altitude: 700' (213 m). Skill level 2.

1466
EST1466



www.gpdealer.com

Long story short...

Factory-equipped with a complete launch system, the striking Maxi Alpha 3 can be flight-ready in an afternoon's time.

AUTO WORLD® 4GEAR™ SCOOBY DOO® RACE SET – HO SCALE

Souped up on Scooby Snacks®.

- Over 28' (8.5 m) of track for multiple layout possibilities, including an over-and-under layout! Track features three 15" (38 cm) straights, four 9" (23 cm) straights, two 9" (23 cm) squeeze-tracks and sixteen 9" (23 cm) radius curves.
- Race as the Mystery Machine®, or as the villain's fast '59 Cadillac®. Both feature an extended "pancake" 4Gear chassis, dragster-inspired wheels and dual Neodymium traction magnets.
- Set includes 2 variable-range speed controllers, 1 cardboard backdrop, 1 power pack, 1 sticker sheet and 2 track cleaning pads.
- Also included are 18 guard rails, 13 track supports, 154 track support pillars and 32 flagpoles.

SRS240
RDZW0240



Long story short...

Join Scooby and the gang as they outfox spooky specters to first-place victories!



AUTO WORLD® 4GEAR™ BATMAN® THE RIDDLER REVENGE RACE SET – HO SCALE

Fight crime with the Caped Crusaders.

- Over 28' (8.5 m) of track. Many layout possibilities, including an over-and-under setup! Features three 15" (38 cm) straights, four 9" (23 cm) straights, two 9" (23 cm) squeeze-tracks and sixteen 9" (23 cm) radius curves.
- Drive the Batmobile®, or take the Riddler's Villainous Van for a spin. Both feature an extended "pancake" 4Gear chassis, dragster-inspired wheels and dual Neodymium traction magnets. The Batmobile also comes with Batman and Robin® figures.
- Set includes 2 variable-range speed controllers, 1 cardboard backdrop, 1 power pack, 2 sticker sheets and 2 track cleaning pads.
- Also included are 18 guard rails, 13 track supports, 154 track support pillars and 32 flagpoles.



SRS243
RDZW0243



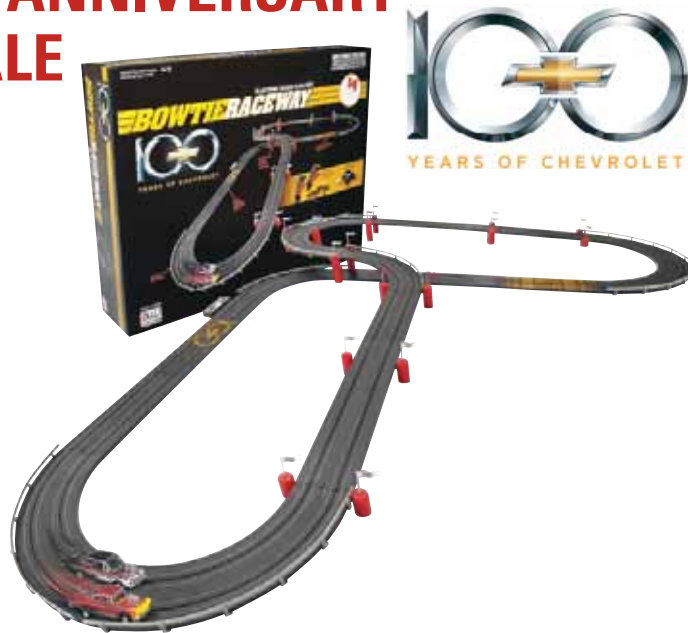
Long story short...

Comic crime-fighters come to life in a ready-to-run slot car set that's fast-paced fun for all ages!

AUTO WORLD® CHEVY® 100TH ANNIVERSARY BOWTIE RACEWAY – HO SCALE

Celebrating a century of Chevy.

- 14' (430 cm) of track is included, to create a challenging over-and-under layout! Features three 15" (38 cm) straights, two 9" (23 cm) straights, eight 9" (23 cm) radius curves, two 9" (23 cm) crossovers and one 15" (38 cm) terminal track.
- Includes two chrome edition ThunderJet® Ultra-G™ racers: one 1957 Chevy Bel Air® and one 1962 Chevy Bel Air. Both feature a classic "pancake" design and a special Neodymium traction magnet.
- Set includes 2 variable-range speed controllers, custom track graphics, 1 power pack and 1 track cleaning pad.
- Also included are 8 guardrails, 65 pillars and 9 pillar supports.



SRS244
RDZW0244



Long story short...

The Chevrolet® tradition lives on in a special edition 100th anniversary set that's sure to excite rookie and pro racers alike!

LIONEL® COCA-COLA® 125TH ANNIVERSARY VINTAGE STEAM SET – 0 SCALE

A refreshing choice for cola collectors.



- Steam locomotive features transformer-controlled forward/reverse/neutral operation, a TrainSounds® sound effects system, a maintenance-free motor, an operating headlight, an operating coupler (on rear of tender), a puffing smoke unit and two traction tires.
- FasTrack® layout includes three straight sections, eight curved sections and one terminal section.
- Rolling stock offers exquisite details! The early-era flatcar features side fencing and vats. The wood-sided reefer includes opening doors and simulated box load inserts. All feature diecast arch bar-style trucks with operating couplers.
- Ready-to-run set also comes with a CW-80 transformer and smoke fluid.
- Set length (approx.): 44" (1,118 mm). Layout dimensions: 40" x 60" (1,016 mm x 1,524 mm)

LNLU0166
6-30166



Long story short...

19th century looks and a 20th century classic combine to create a must-have set for 21st century collectors.



LIONEL® RIO GRANDE GENERAL SET – 0 SCALE

A real railroad legend.



- 4-4-0 steam locomotive and tender features transformer-controlled forward/reverse/neutral operation, a maintenance-free motor, a TrainSounds® sound effects system, an operating headlight, a puffing smoke unit, an operating coupler on the rear of tender, two traction tires and a front-mounted snowplow with chains.
- FasTrack® layout includes three straight sections, eight curved sections and one terminal section.
- The operating horse car features two horses that move back and forth through the side windows. The gondola with vat load has simulated wooden sides and ends. Two passenger coaches (Royal Gorge and Leadville) round out the rolling stock.
- Set also includes a Power-Max CW-80 transformer and smoke fluid.
- Set length (approx.): 56" (1422 mm). Layout dimensions: 40" x 60" (1016 mm x 1524 mm).

6-30168
LNLU1168



Long story short...

Travel through untamed territory with the Rio Grande General – the ready-to-run train set with Wild West authenticity!



LIONEL® SANTA'S FLYER TRAIN SET – 0 SCALE

Sock it to me, Santa!

- Diecast metal 0-8-0 steam locomotive with tender features transformer-controlled forward/reverse/neutral operation, a maintenance-free motor, a puffing smoke unit, an operating headlight, an air whistle, traction tires, engineer/fireman figures, a metal frame and metal trucks.
- FasTrack® layout features three straight sections, eight curved sections and a terminal section.
- Rolling stock includes a Christmas music boxcar with on/off switch, a three-dome tank car and a caboose with interior illumination.
- Set also features a PowerMax® transformer and smoke fluid.
- Set length (approx.): 46.8" (1187 mm). Layout dimensions: 40" x 60" (1016 x 1524 mm).



LNLU0164
6-30164



Long story short...

Christmas only comes but once a year, but with Santa's Flyer, every day's merry and bright!

Just Released

Lionel® Santa's Operating Boxcar – 0 Scale

Chock full of Christmas cheer.

- Trigger a remote control track section (sold separately) to make Santa appear!
- Features opening doors, diecast metal sprung trucks and diecast metal operating couplers.



6-29312
LNLU9312
Santa's Operating Boxcar – 0 Scale

Lionel® 2011 Holiday Boxcar – 0 Scale

Season's greetings from Lionel.

- Features opening doors, a metal frame, diecast metal sprung trucks and diecast metal operating couplers.
- Must-have for collectors
- Length: 10.5" (267 mm).



6-29975
LNLU9975
2011 Holiday Boxcar – 0 Scale

SHOWCASE BUILDING MATERIALS WITH THIS FLEXIBLE RACK SYSTEM

Get building — with assorted Revell® woods

- Available merchandise assortments of best-selling building materials
- The rack's steel exterior will last for years, and the adjustable dividers are made of durable long lasting plastic
- Signs are included with the package deals for the front and back of the display that identifies product by SKU, including description and bar code plus another with a product diagram
- The versatile rack's shelves and dividers can be reconfigured to display other products as well



The Flexible Rack System is available with an assortment of Balsa, Basswood sticks and sheets and model Plywood building materials.



- Flexible Rack System w/Model Plywood Building Materials Assortment
- Flexible Rack System w/Balsa Sticks & Sheet Building Materials Assortment
- Flexible Rack System w/Hobby Balsa/Basswood Building Materials Assortment
- Flexible Rack System w/Craft Balsa/Basswood Building Materials Assortment

See page 23 in R/C Edition for Flexible Rack Systems with Foam and Carbon Fiber building materials!



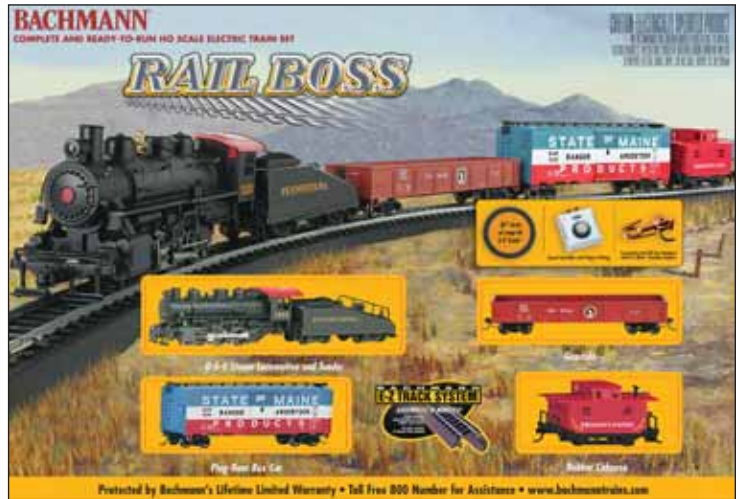
Long story short...

To get professional-looking results for your project, look for this rack with assorted Revell wood materials at your local hobby shop.

BACHMANN® RAIL BOSS 0-6-0 STEAM SET – HO SCALE

A Great Planes® exclusive!

- Features an 0-6-0 steam locomotive and tender with realistic Pennsylvania Railroad markings.
- 36" (914 mm) circle snap-fit E-ZTrack® layout assembles in minutes.
- Rolling stock includes a gondola, a plug-door box car and a bobber caboose.
- All are equipped with E-Z Mate® knuckle couplers. Speed controller also included.



00687
BACU0687

BACHMANN



Long story short...

This entry-level steam train will be the best-selling set of the season – and only Great Planes has it!

BACHMANN® RAIL CHIEF TRAIN SET – HO SCALE

A ready-to-run railroad empire.

- 130-piece set features an EMD GP40 diesel locomotive with operating headlights.
- An oval, 47" x 38" (1194 mm x 965 mm) snap-fit E-ZTrack® layout with 12 pieces of curved track, 1 piece of straight track and 1 plug-in terminal reailer is also included.
- Rolling stock consists of an open quad hopper, a gondola, a plug-door box and an off-center caboose. All feature body-mounted E-Z Mate® couplers.
- Set also includes a signal bridge, 36 miniature people figurines, 24 telephone poles, 48 railroad and street signs, plus a power pack and speed controller.



00706
BACU0706

BACHMANN



Long story short...

The Bachmann Rail Chief has everything a conductor could ask for, in an affordable, easy-to-assemble package!

BACHMANN® CIVIL WAR 150TH ANNIVERSARY TRAIN SETS – HO SCALE

Bridging the gap within a divided nation.

- 4-4-0 American locomotive comes with an operating headlight and tender.
- Both feature an historically accurate water car, boxcar, gondola, flat car and combine or bobber caboose.
- 56" x 38" (1422 mm x 965 mm) oval E-ZTrack® layout includes 12 curved pieces, 3 straight pieces and 1 plug-in terminal rerailer.
- Also included are 100 military figures, 3 cannons and 4 horses.
- Both sets also feature a power pack, speed controller and instructions.



BACU0708
00708 Union



BACU0709
00709 Confederate

BACHMANN®

BACU0708
00708 Union



BACU0709
00709 Confederate



Long story short...

Our nation's most tumultuous time is recreated with these superbly detailed Civil War train sets, 150 years after the first shots were fired at Fort Sumter.

BACHMANN® SANTA SPECIAL SET – HO SCALE

Fully stocked with presents, for a very merry Christmas.

- The USRA 0-6-0 steam locomotive features tender and an operating headlight.
- Rolling stock consists of a gondola with presents, a reindeer transport stock car, a hot chocolate tank car and a North Pole & Southern bobber caboose. All feature body-mounted E-Z Mate® couplers.
- Complete, 47" x 38" (1194 mm x 965 mm) oval E-ZTrack® layout comes with 12 curved pieces, 1 straight piece and 1 plug-in terminal railer.
- Set also includes a speed controller, a power pack and an illustrated instruction manual.



00707

BACU0707 Santa Special Set – HO Scale

BACHMANN® \$ _____

Long story short...

The Santa Special is chock-full of Christmas cheer and holiday spirit. Even Scrooges will be satisfied!

BACHMANN® DURANGO & SILVERTON SET – HO SCALE

Still chugging, 130 years later.

- Realistic 2-8-0 steam locomotive comes with tender and an operating headlight.
- Rolling stock consists of an open excursion car, an old-fashioned combine and an old-fashioned coach.
- 47" x 38" (1194 mm x 965 mm) oval E-ZTrack® layout features 12 curved pieces, 1 straight piece and 1 curved plug-in terminal railer.
- Also includes a power pack, speed controller and an illustrated instruction manual.



00710

BACU0710 Durango & Silverton Set – HO Scale

BACHMANN® \$ _____

Long story short...

Bachmann has recreated one of history's most celebrated railroads, in an HO-scale set that's sure to satisfy.

LIONEL® SANTA FE FLYER FREIGHT TRAIN SET – 0 SCALE

Blazing its way westward, one city at a time.

- 0-8-0 locomotive features a maintenance-free motor, forward/reverse/neutral operation, traction tires, operating couplers, a puffing smoke unit, an operating steam whistle, an operating headlight, engineer/fireman figures and more.
- Complete 40" x 60" (1,016 mm x 1,524 mm) FasTrack® layout includes eight curved pieces, three straight pieces and one terminal section.
- Includes a wood-sided reefer with operating doors and a searchlight car with an adjustable light. The barrel ramp car comes with barrels and a canister, while the caboose features interior illumination.
- All rolling stock cars are equipped with operating couplers.
- A PowerMax® transformer, smoke fluid, a two-sided billboard and ten telephone poles round out the set.

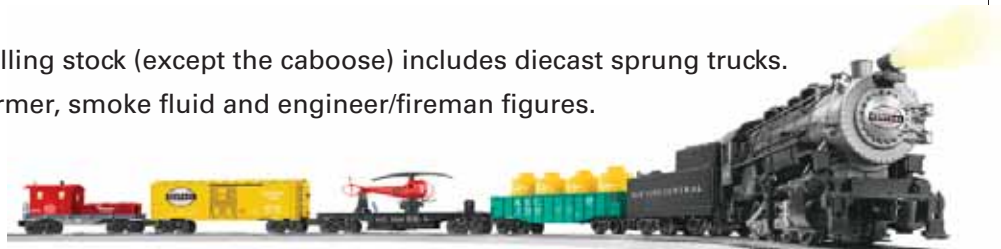
LNLU0173
Mfg# 6-30173



LIONEL® NEW YORK CENTRAL FLYER SET – 0 SCALE

Ready to charge down the mainline.

- 0-8-0 steam locomotive and tender features: diecast body and frame, maintenance-free motor, transformer-controlled forward/neutral/reverse operation, TrainSounds® sound system, operating headlight, puffing smoke unit, traction tires, upgraded drive rod assembly and wheels with silver metal rims.
- 40" x 60" (1016 mm x 1524 mm) FasTrack® layout includes 3 straight sections, 8 curved sections, 1 terminal section and 1 uncoupling section.
- Rolling stock includes a boxcar with opening doors, a helicopter launch car with operating helicopter, a gondola with four "Pacemaker" canisters and a work caboose with interior illumination.
- All feature operating couplers. Rolling stock (except the caboose) includes diecast sprung trucks.
- Set also features a CW-80 transformer, smoke fluid and engineer/fireman figures.



6-30156
LNLU0156 New York Central Flyer Set – 0 Scale



Long story short...

The Northeast's most celebrated railroad returns, as a spectacular, ready-to-run set from Lionel!

SCX® 1/32 SCALE DS GT PIT BOX SET

Decide the winning strategy with digital precision.

- Digital technology lets you race multiple cars, switch lanes and more!
- Set includes three cars: the Chevrolet® Corvette® C6R™, the BMW® M3 GT2 and the Porsche® 911 GT3 Cup.
- Complete track layout consists of 1 Pit Box start terminal track, 1 standard straight, 1 each of left/right access tracks, 2 single-lane pit box straights, 2 single-lane straights, 5 standard straights, 3 changeover tracks and 8 standard curves.
- Also features 3 electronic hand throttles, 1 pit box control unit, 4 pit box barriers, 8 tapered borders with barriers, 8 standard curve borders with barriers and an electronic transformer.
- Length: 19'7" (6 m). Dimensions: 9'6" x 3'7" (294 cm x 113 cm).



D10009X510
SCXW1009



Long story short...

Grab your chance to cross the finish line first with the Grand Touring greatness of the GT Pit Box set!

SCX® 1/32 SCALE C2 GT LE MANS SET

High-speed, high-performance GT racing



A10004X500
SCXW5104



- Featuring wider, digital-compatible track!
- Includes two GT vehicles: the Audi® R10 "Albers" and the Peugeot® 908 HDI FAP.
- Complete track layout consists of 2 half-straights, 6 standard straights, 1 terminal track, 10 standard curves, 2 bridge supports and 8 barriers.
- Set also features 2 hand throttles and 1 electronic transformer.
- Length: 16'7" (5 m). Dimensions: 7'8" x 2'7" (238 mm x 82 cm).

Long story short...

Enjoy authentic 24 Hours Le Mans action any time with this fully-featured slot car racing set from SCX!

SCX® COMPACT 1/43 SCALE RACING CLASSICS SET

Timeless enjoyment, in a kid-friendly size.

- An ideal first set that's easy for children to enjoy!
- Cars are equipped with strong magnets to prevent derailments and rollovers.
- Includes two Plymouth AAR Cudas, two turbo controllers and an easy-to-assemble track layout.
- Track length (approx.): 13 ft. (396 cm). Ages 4 and up.



SCXW0103
SCX® Compact 1/43 Scale Racing Classics Set



Long story short...

Kids will go crazy for this action-packed racing set that's easy to control and all-in-one complete!

AFX® SUPER INTERNATIONAL RACE SET – HO SCALE

Four lanes of fun for all skill levels!

- Now equipped with the exclusive Tri-Power Pack. Multiple skill levels can race simultaneously with just a flick of the switch!
- Set includes four Formula One Mega-G racers, 25' of 4-lane track, four ProClass controllers, twenty guard rails and six bridges.
- There are 18 possible International Raceway configurations, all with tight, challenging corners for added realism.
- A Directional Power Pack lets you change track direction with the flip of a plug.
- Also includes a tune-up kit and a standard power pack. Ages 8 and up.



AFXW0292
Super International Race Set – HO Scale



Long story short...

The Super International is back and better than ever, featuring a Tri-Power Pack so all skill levels can get in on the action!

SPIN DRIVE PUTS THE FUN OF SL



Retailers purchasing the new Revell SPIN DRIVE slot car sets will be featured on the revell.com web site Dealer Locator!

- Innovative slot car racing that uses no batteries or electricity — race almost anywhere
- Turning the crank either clockwise or counter-clockwise generates the power
- Complete SPIN DRIVE racing sets include cool cars with light-up wheels, snap-together track, controllers, control box, guard rails and more
- Assemble the track in just minutes to create the layout on the box, or one of your own
- Box doubles as a sturdy carrying case
- SPIN DRIVE cars stay on the track better than electric-powered slot cars
- LEDs on the chassis light up the car's wheels



YOU are the
POWER!
Spin Fast – Go Fast!



**No Batteries,
No Electricity Required!**

LOT CAR RACING IN YOUR HANDS!

Choose from 4 exciting layouts!



Apex Master™ Set
Track Length: 16.7 ft (5.1 m)
RMXW6141



TrackStar Challenge™ Set
Track Length: 39 ft (11.9 m)
RMXW6145



Turbo Loop™ Set
Track Length: 19.3 ft (5.9 m)
RMXW6142



Twistin' Turnpike™ Set
Track Length: 31.8 ft (9.7 m)
RMXW6144

From the Experts:

With SPIN DRIVE slot cars you're not tethered to an electrical outlet, or at the mercy of battery power. A dynamo in each controller generates power when you turn the crank — the faster you crank, the faster your car moves. And each set comes complete with cool cars, snap-together track, controllers, control box, guard rails and lots more!

Long story short...

Enjoy endless excitement racing SPIN DRIVE slot cars with your friends





MINI HELI EP RTFS



ESTE4601
4601 SF161™

ESTE4601 4601 SF161™
Length: 8.6 in (21.9 cm)
Requires: 6 AA Batteries
Ages: 14 and up

- Fully assembled and full-featured.
- Ideal for entry-level pilots!
- Counter-rotating rotor blades create confidence-boosting stability.
- Both come with a 3.5-channel infrared radio system and a 3.7V (1S) LiPo flight battery.
- The **R73-OPS** has LED searchlights and rugged, factory-applied military decals.



Easy indoor flight, from the finest in model rocketry.



- Fully assembled and full-featured.
- Ideal for entry-level pilots!
- Counter-rotating rotor blades create confidence-boosting stability.
- Both come with a 3.5-channel infrared radio system and a 3.7V (1S) LiPo flight battery.
- The **R73-OPS** has LED searchlights and rugged, factory-applied military decals.

ESTE4602 4602 R73-OPS™
Length: 8.6 in (21.9 cm)
Requires: 6 AA Batteries
Ages: 14 and up



Long story short...

Estes joins the world of mini RTF helis with feature-filled, ready-to-fly choppers that take ease and affordability to new heights!



SNAPTITE® 1/32 SCALE PETERBILT® CABOVER 352

An easy-to-build replica of the classic cabover.

Introduced in 1959, the Peterbilt Cabover 352 with tilting cab was designed as a replacement for the non-tilting 351 cabover. The 352's "Panoramic Saf-T-Cab" was constructed from hand-tooled UniLite. Available cab sizes ranged from 54 in. (1,372 mm) to 110 in. (2,794 mm) from the bumper to the back of the cab (BBC). **Kit features** easy snap assembly, a detailed body, interior and chassis; dual exhausts, air horns, mirrors, chrome-plated wheels and colorful Peel 'n Stick decals with stock and custom graphics.

851964 RMXS1964 Total parts: 59 Skill level 1 Length: 8.3 in (210 mm)



1/25 SCALE '48 FORD® CUSTOM COUPE 3 'N 1

Get creative with this custom-built classic.

The 1948 Ford was the company's last model to be produced using a pre-WWII design. Distinctive "fat" fenders helped make it an instant favorite with custom builders, who tended to chop the top and add fade-away fenders and tunneled headlights. **Kit features** optional custom parts, four grilles with separate surrounds, two bumpers, two hubcaps, three taillights, two hoods, fade-away side panels, spotlights, fender skirts, plated metal exhaust tips, Tampo®-printed whitewall tires, chrome-plated parts and decals with colorful custom graphics.

RMXS4253 Total parts: 136 Skill level 3 Length: 7.8 in (197 mm)



1/25 SCALE '67 CHEVELLE™ SS™ 396

Remarkably rare, compulsively drivable.

The 1967 Chevelle SS 396 may have looked like a standard sports car from the outside, but inside, it was one of the most compulsively drivable muscle cars of its era. Only 612 SS 396s were ever produced, making them a rare collector's item today. **Kit features** an opening hood with a detailed 396 cu. in. V-8 engine, a choice of a stock or lowered suspension, optional stock rally wheels or large-diameter custom wheels with disc brake detail, soft black tires, chrome-plated parts and decals with stock and custom graphics.

RMXS4285 Total parts: 113 Skill level 2 Length: 7.9 in (200 mm)



1/25 SCALE '59 CHEVY® IMPALA™ CONVERTIBLE 2 'N 1

The ultimate classic cruiser.

The Chevrolet® Impala Convertible was completely redesigned for the 1959 model year. The end result became as much of a 1950s icon as Elvis Presley! Today, the '59 Impala's protruded tailfins and extended wheelbase remain popular with collectors. **Kit features** a detailed 348 cu. in. V-8 engine with three 2-barrel carburetors, a choice of "top up" or "top down" versions, whitewall tires, a spare tire kit, optional custom taillights, a tubular grille, spinner hubcaps, fender skirts, lake pipes, dual headlights and decals with colorful stock and custom graphics.

RMXS4944 Total parts: 157 Skill level 3 Length: 8.8 in (222 mm)



1/48 SCALE OS2U KINGFISHER

The "king" of WWII floatplanes.

Originally designed in the late 1930s as an observation aircraft, the OS2U Kingfisher had a remarkable career aiding the Allies in rescue and reconnaissance missions during WWII. **Kit features** a choice of open or closed canopies, optional parts for wheeled and float versions, an optional dolly to model the "floatplane" version on land, pilot and gunner figures and decals for two versions: 1. OS2U-3 Kingfisher of Cruising Scouting Squadron One (VCS-1), catapults U.S.S. Detroit (CL-8), Aleutian Islands and 2. Kingfisher OS2U-3 Naval Air Station, Corpus Christi, Texas, 1942.

RMXS5260 Total parts: 62 Skill level 2 Length: 8.4 in (214 mm) Wingspan: 8.9 in (225 mm)



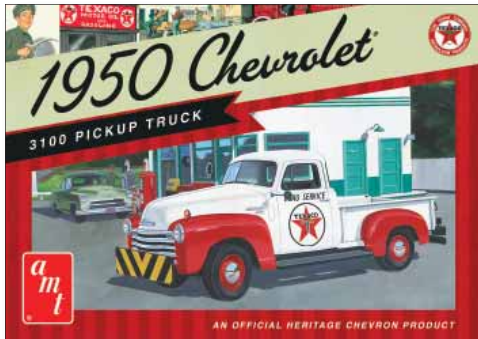


AMT® 1/25 Scale 1925 Ford® “Tall T” Double Kit

Available for the first time since 1975.

The Model “T” wasn’t a car. It was mass-produced perfection. The Model “T” transformed a fledgling company into a successful corporation...and made Henry Ford a household name. With the Model “T”, Ford produced an affordable car that was still high-quality, and his design continues to influence cars to this day. This **kit combo features** two complete “Tall T” car kits, with a choice of stock, street or strip building options. Also includes a stock height “Tall T” hardtop body, pad-printed vinyl tires and slicks, chrome parts and vintage 1960s packaging.

AMT670 AMTS0670 Skill level 2



AMT® 1/25 Scale 1950 Chevrolet® 3100 Pickup Truck

Vintage looks, “Advance Design” authenticity.

61 years after its original release, the 1950 Chevrolet 3100 is still a hit with collectors – and it’s easy to see why. Like all trucks in the “Advance Design” series, the half-ton 3100 was big, strong and sleek-looking. 1950 marked the final year for the rear bumper, while telescopic shock absorbers were added, replacing the lever-action kind. **Kit features** new parts for the optional roof, fender flasher lights and the front “push bumper.” Also included are black vinyl tires, chrome parts genuine Texaco® waterslide decals and collectible vintage Texaco packaging.

AMT679 AMTS0679 Skill level 2



Moebius® Models 1/32 Scale Battlestar Galactica® Colonial Viper Mk. VII

The Colonial Fleet’s latest, greatest fighter.

Featured in the recent Battlestar Galactica reboot, the Colonial Viper Mk. VII is the galaxy’s most advanced fighter. Mk. VII’s are far more agile than earlier Viper variants. Their navigational systems are fully networked, with user-intuitive, software-based controls. Weapons include three kinetic energy weapons and two missile launchers. **Kit features** a choice of “in-flight” or “landed” modes, a display stand, a choice of a male or female pilot figure, five name plate options and a full decal sheet with Galactica and Pegasus regalia options.

MOES0916 Skill level 3



Moebius® Models 1/25 Scale 1953 Hudson Hornet

Sleekly designed, with streamlined styling.

Detroit’s Hudson Motor Car Company produced the streamlined and low-CG Hornet from 1951-1954. Because of its unique design, the Hornet became a star on the NASCAR® stock car circuit, winning 27 out of 34 Grand National races in 1952. Today, countless car collectors consider the Hornet to be among the most collectible cars of the twentieth century. This kit represents the first time the ‘53 Hornet has appeared as an injection-molded model! Includes decals.

MOES1200 Total parts: 106



Polar Lights® 1/25 Scale 1966 Batmobile™ Snap Kit

Just like in the classic 1960s series!

Fans familiar with the 1960s series “Batman” will, no doubt, recognize the iconic 1966 Batmobile. However, not all fans know the following factoid. Designer George Barris had only three weeks to transform the rare 1959 Lincoln Futura concept car into a crime-fighting hot rod. The end result became an instant pop culture phenomenon that continues to attract large car show crowds to this very day. **Kit features** easy snap assembly, a detailed black plastic body with chrome and clear accents, metal axles and figures of Batman® and Robin®.

P01824 PLLS0824 Skill level 2



NANX0001
Mfg# 216OR
Original



Nano Magnetics Nanodots™ Magnetic Constructors

The toy anyone can enjoy that's educational, too!

- Mini-sized Neodymium beads are engineered for durability and strength.
- Create cool geometric models, sculptures, wacky designs and more – the possibilities are endless!
- Each set includes 216 Nanodots, a plush carrying pouch and assembly instructions.
- Flexible **Nanopad™ Nano Game Pad** features a full-size chess board on one side. IronWeave™ technology provides impact resistance and durability.

Also Available:

NANX0002	216BLK	Black
NANX0003	216SLV	Silver
NANX0005	NANOPAD	Nano Game Pad



OWIX0536
3-in-1 All-Terrain Robot Kit

OWI 3-in-1 All-Terrain Robot Kit

Multi-function and on the move!

- Transform it into a mini forklift, a rover or a gripper.
- A wired controller performs forward and backward movement, plus turning, gripping and lifting functions.
- Interchangeable track modules provide flexibility, simplifying building.



OWIX0750
Salt Water Fuel Cell Car

OWI Salt Water Fuel Cell Car

Kid-friendly, eco-friendly fun.

- Runs for 5-7 continuous hours per fill. Just add salt water and go!
- Includes 3 magnesium metal sheets and a removable fuel cell module.



NSIX2249
Mfg# 22249

NSI® Smithsonian® 300x 600x & 900x Microscope Kit

Study specimens at 900x their normal size.

- Great fun for future scientists.
- A built-in light provides direct illumination, while a reflecting mirror provides natural illumination.
- Includes 3 prepared slides, 8 blank slides and assorted laboratory accessories. Requires 1 "AAA" battery.



Cruise the Cosmos, for under \$30!

ESTT1903
Maxi Alpha 3™
Rocket Kit



Estes® Maxi Alpha 3™ Rocket Kit

Powered by Estes' D & E engines!

- Includes a recovery parachute, plastic fins and self-adhesive decals.
- 33.3 in. (84.5 cm) tall. Max. Altitude: 700 ft. (213 m).
- Skill level 2

ESTT2446
Mini Honest John
Rocket Kit



Estes® Mini Honest John Rocket Kit

Flies on mini engines!

- Includes a recovery parachute, laser-cut balsa fins and waterslide decals.
- 11.8 in. (29.8 cm) tall. Max. Altitude: 325 ft. (99 m).
- Skill level 1

ESTT2447
Astron Elliptic II™
Rocket Kit



Estes® Astron Elliptic II™ Rocket Kit

Straightforward construction – graceful styling.

- Features tumble recovery, a streamer, laser-cut balsa fins and waterslide decals.
- 23.3 in. (59.2 cm) tall. Max. Altitude: 925 ft. (282 m).
- Skill level 2

ESTT3217
Vagabond™
Rocket Kit

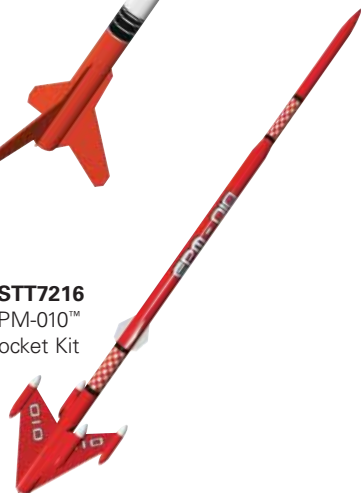


Estes® Vagabond™ Rocket Kit

An impressive crowd-pleaser!

- Includes a recovery parachute, laser-cut balsa fins and waterslide decals.
- 35.3 in. (89.5 cm) tall. Max. Altitude: 1,275 ft. (389 m).
- Skill level 2

ESTT7216
EPM-010™
Rocket Kit



Estes® EPM-010™ Rocket Kit

Outta sight, interplanetary travel!

- Features a recovery parachute, laser-cut balsa fins and waterslide decals.
- 35.3 in. (89.5 cm) tall. Max. Altitude: 925 ft. (282 m).
- Skill level 2



ROCKETS

- Starter Sets include: rocket, recovery system, reusable launch pad, Q2 launch controller, reusable range box three rocket engines with Q2G2 igniters and recovery wadding.
- Launch Sets include all items in the starter sets except: engines, igniters or recovery wadding.
- All Starter Sets and Launch Sets require a 9V battery. QUST1406 and QUST5738 also require glue.



Astra III Starter Set

- A perfect starting point.
- 15" tall
- Flies up to 1,200 feet

Skill Level: 1
1406/QUST1406



Vortex Starter Set

- No experience necessary. Over 18" tall
- Flies over 1,200 feet

Skill Level: 1
5738/QUST5738



T-Minus Five Two-Rocket Starter Set

- Includes two RTF rockets.
- Kit 1 is 11" tall; Kit 2 is 13" tall
- Kit 1 flies up to 900 feet; Kit 2 flies up to 800 feet

Skill Level: 1
5736/QUST5736



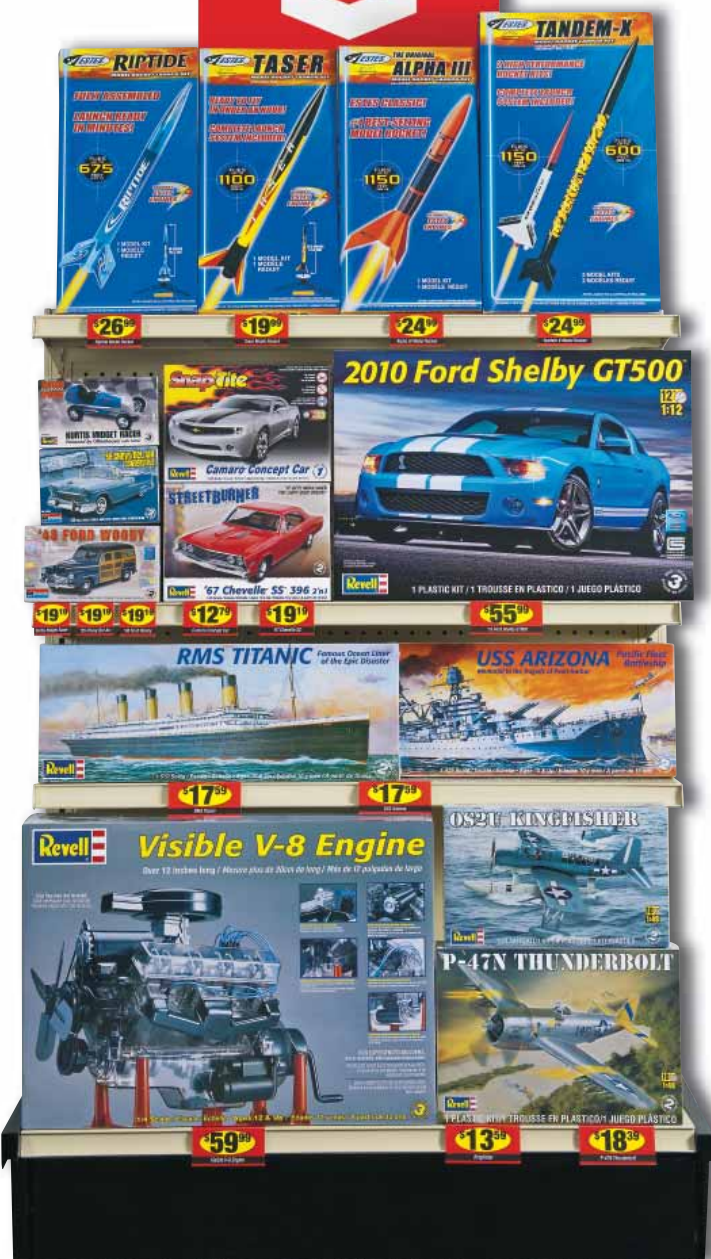
T-Minus Five Launch Set

- Instant airtime – just add engines.
- 13" tall
- Flies up to 1,200 feet

Skill Level: 1
1409/QUST1409

GREAT HOLIDAY GIFTS FOR HOBBYISTS OF ALL AGES!

Great Gifts
For the FUN of it!



Gifts that don't break the bank!

Rockets and plastic models are two of the most popular pastimes enjoyed by hobbyists today. The products shown here represent the best that Estes® and Revell®/Monogram® have to offer, while proving that you don't have to spend a lot to get a lot!

Models for every skill level and interest!

Whether you're a rookie or a pro, there are plenty of available options below to satisfy your skill level. The choices are as extensive as they are enjoyable, ranging from the P-47N Thunderbolt to the R.M.S. Titanic – even a see-through Visible V-8 engine!

Rockets that'll knock your socks off!

Model rocketry is as popular as ever, and with the choices listed below being so easy-to-enjoy, it's no wonder why. Assembly takes only a few minutes. Grab your family and friends and blast off!

Check out these fun-packed products at your favorite hobby shop!

- | | |
|----------|---|
| ESTT1403 | Estes Riptide™ RTF (Ready-to-Fly) Launch Set |
| ESTT1491 | Estes Taser™ E2X (Easy-to-Assemble) Launch Set |
| ESTT1427 | Estes Alpha III™ E2X (Easy-to-Assemble) Launch Set |
| ESTT1469 | Estes Tandem-X™ E2X (Easy-to-Assemble)/Skill Level 1 Launch Set |
| MONS4269 | Monogram® 1/25 Scale '55 Chevy® Bel Air® Convertible |
| RMXS4267 | Revell 1/25 Scale Kurtis Kraft Offenhauser Midget Racer & Trailer |
| MONS4282 | Monogram 1/25 Scale '48 Ford® Woody |
| RMXS1944 | Revell 1/25 Scale SnapTite® Camaro® Concept Car |
| RMXS4285 | Revell 1/25 Scale Chevelle™ SS™ 396 |
| RMXS2623 | Revell 1/12 Scale Ford® Shelby® GT500™ |
| RMXS0445 | Revell 1/570 Scale R.M.S. Titanic |
| RMXS0302 | Revell 1/426 Scale U.S.S. Arizona Battleship |
| RMXS8883 | Revell 1/4 Scale Visible V-8 Engine |
| RMXS5260 | Revell 1/48 Scale OS2U Kingfisher |
| RMXS5314 | Revell 1/48 Scale P-47N Thunderbolt |

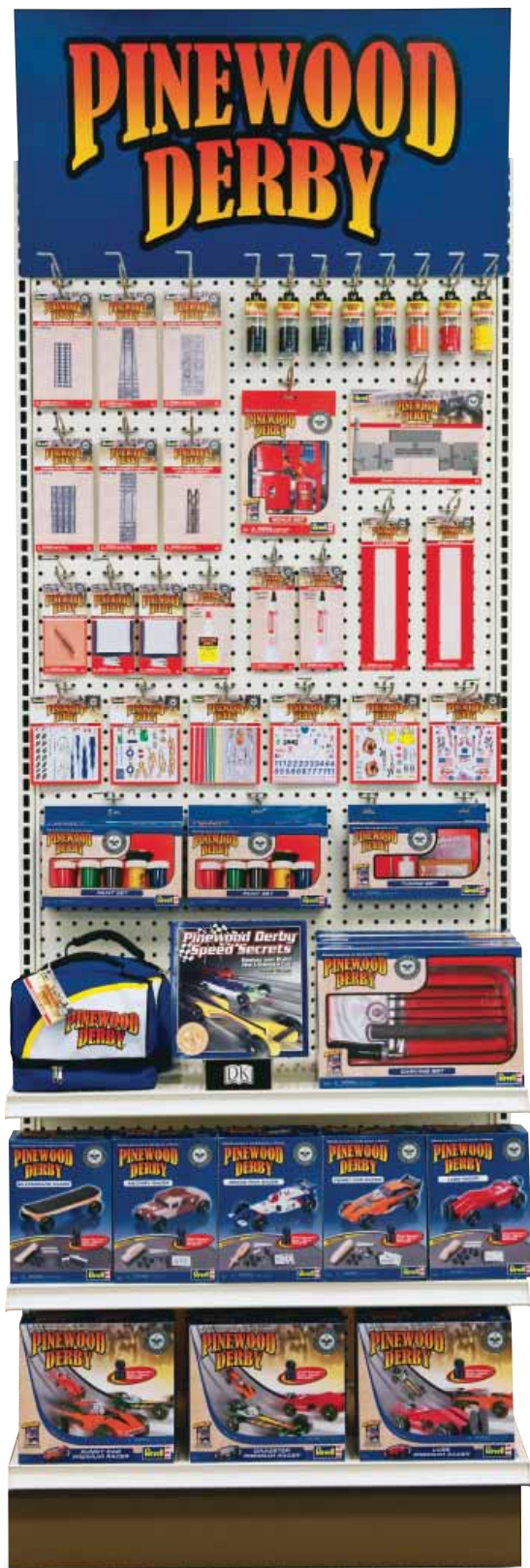
Grab one for a friend or family member, and grab one for yourself, too!



PINEWOOD DERBY



Officially licensed by the Boy Scouts of America.



Look for the Revell Pinewood Derby® display at your local hobby shop. It's fully stocked with everything you need for the 2012 season!

- All the fun of Pinewood Derby® at your fingertips.
- Racing is an exciting, educational way to earn merit badges.
- A great choice for Boy Scouts, Awana® clubs and other youth groups!

Hot Rod Racer Series Kit

Pre-carved wooden blocks and illustrated, step-by-step instructions simplify assembly.



*products subject to change

RMXY8641

STOCK UP FOR 2012!

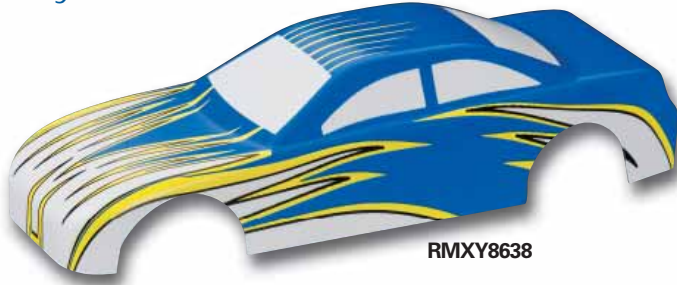
Complement your Pinewood Derby® racers with these accessories:

Car Parts Accessory Packs



RMXY8662

EZ Body™ Stock Car Bodies



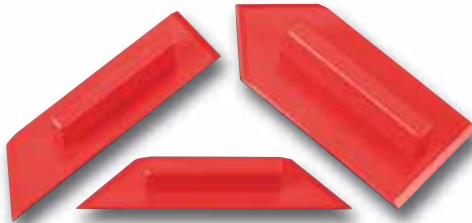
RMXY8638

Axle Straightener



RMXY8667

Sandpaper Grip Set



RMXY8669

Graphite Powder



RMXY9614

Glue & Gap Filler



RMXY9617

Decal Sheets



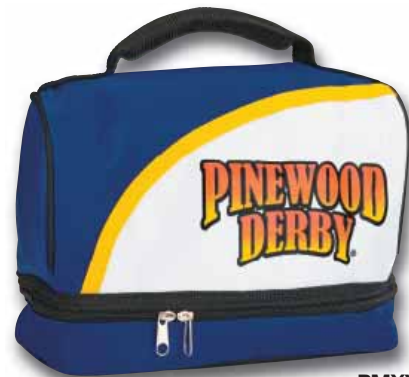
RMXY8682

Paint & Brush Set



RMXY9630

Car Carrying Case



RMXY9631

See the complete line of Pinewood Derby® products at revell.com!

Boy Scouts of America, the Universal Emblem, Pinewood Derby are registered trademarks of the Boy Scouts of America. Manufactured under license. All rights reserved.

GREAT



NEWS[®]

T PLANES[®]

D I S T R I B U T O R S