



AND



STATEMENT OF QUALIFICATIONS

SERVING THE WEST SINCE 1975

Gilbert Development Corporation and Crusher Rental & Sales Inc. are pleased to provide you with the following statement of qualifications. We thank you for the opportunity and look forward to doing business with you.



6249 W. GILBERT INDUSTRIAL COURT
HURRICANE, UTAH 84737

**GILBERT DEVELOPMENT
CORPORATION
AND
CRUSHER RENTAL &
SALES INC.**

Phone: 435.627.1907
Fax: 435.627.2938
E-mail: office@gilbertdevelopment.com

SERVING THE
WEST SINCE
1975



AND



L I C E N S E S / R E F E R E N C E S

LICENSE INFORMATION

MSHA IDENTIFICATION:

MSHA Contractor ID: S3D

EMR:

Gilbert Development Corp. on 01/01/14: 0.70

CONTRACTORS LICENSES:

State of Nevada

License Number: 0020044
Classification: AB General Engineering and Building
Limit: **UNLIMITED**

State of Utah

License Number: 83-242001-5501
Classification: Contractor (E100-B100)
Work in progress limit: **UNLIMITED**

REFERENCES

CORPORATIONS/INDIVIDUALS WORK PERFORMED FOR:

<u>Corporation/Individual</u>	<u>Year</u>	<u>Reference Name</u>
Swinerton Renewable Energy	2014-2016	Chris Loo
Lhoist North America	2014-2015	Carla Lopez
CML Metals Corporation	2010-2014	Michael Conboy
Palladon Ventures Ltd	2004-2014	Robert Getz
Elim Valley Planning & Development	2007-2008	Roland Walker
Suncor Development Company	2003-2007	Mike Gardner
Layton Construction	2001-2004	Chris Smith
Okland Construction Company	2001-2002	Steve Harmon
AGEC	2000-2002	Wayne Rogers
J.E. Merit	2000-2001	Donna Cueroni
Cedar City Corporation	2000	Paul Klein
Hansen-Rice, Inc.	1995-2001	Dan Richards
Longview Fibre	1995-2001	Paul Christian
Classic Building Company	1999	Ken Miller
First Housing Corporation	1998-1999	George Chami
G.S. Valley Grading	1997-1998	Gil Salinas
Tom Martin Construction	1994-1995	Charlie Martin
Geneva Steel	1987-1995	Dale Paulson
Ball Ball and Brosemar	1987	Jim Keown
U.S. Steel Corporation	1984-1986	Bud Patton
Lincoln Property Corporation	1977	Rick Fore
L.B. Nelson Corporation	1977-1983	L.B. Nelson
Sutterhill, LTD	1980	Dave McKee
Emerson Development	1977	Frank Countner

6249 W. GILBERT INDUSTRIAL COURT
HURRICANE, UTAH 84737

GILBERT DEVELOPMENT
CORPORATION
AND
CRUSHER RENTAL &
SALES INC

Phone: 435.627.1907
Fax: 435.627.2938
E-mail: office@gilbertdevelopment.com

SERVING THE
WEST SINCE
1975



AND



LETTERS OF RECOMMENDATION



Date: November 30, 2014

Subject: Letter of Recommendation - Gilbert Development Corporation- Hurricane UT.

To Whom It May Concern:

Lhoist North America, of Arizona contracted Gilbert Development Corporation in April 2014, to develop and open a new quarry at our mine site in Las Vegas, Nevada. The process included moving over 1.4 M tons of overburden material to expose ore for production use by the close of the year. This contract included drilling, excavation, hauling, dust control, and maintenance of haul roads and waste dumps. Gilbert Development Corporation provided the labor, equipment, maintenance, and supervision to complete this project. Not only did they achieve the contract goals, but exceeded the earth movement target by 25%. Their ability to manage and adjust the equipment/ labor to maximize the capital budget saved the company approximately \$600k.

During this process, Gilbert Development Corporation's staff was extremely professional and respectful of our organization as it pertained to the mining activities at the site. Their attention to safety and understanding of our environmental restraints and policy provided us with the trust that is needed for this type of contracted services. In addition, they assisted us when we needed equipment and labor to run our operations more effectively, along with providing solutions to better achieve our production goals. We developed a business relationship that truly benefited both parties to achieve better than expected results.

We highly recommend Gilbert Development Corporation for any earth moving type contracted services. They have a proven record with Lhoist North America of Arizona; they are on our Preferred Contractors list and will be asked to return to our sites as future services become available.

Carla Lopez

Regional Purchasing Manger

Ran Tamir

Quarry Manger

Rex Simpson

Plant Manager

P.O. Box 985004, Fort Worth, Texas 76185-5004
3700 Hulen Street, Fort Worth, Texas 76107
Phone: (800) 365-6724 (817) 732-8164 Fax: (817) 377-8615

6249 W. GILBERT INDUSTRIAL COURT
HURRICANE, UTAH 84737

GILBERT DEVELOPMENT
CORPORATION
AND
CRUSHER RENTAL &
SALES INC

Phone: 435.627.1907
Fax: 435.627.2938
E-mail: office@gilbertdevelopment.com

SERVING THE
WEST SINCE
1975



AND



LETTERS OF RECOMMENDATION



April 15, 2008

Gilbert Development
2303 N Coral Canyon Drive
Washington, Ut 84780

To Whom It May Concern:

Rosenberg Associates has worked with Gilbert Development on two projects over the last year. First was the extension of two water lines from existing city streets cross country and along an existing road. The total length of the two water lines was approximately 8,000 feet. The second project was a 46 acre, 117 lot subdivision that was developed in an emerging style called New Urbanism. Gilbert Development was the general contractor doing all the dirt work, under ground, and finishing work with in house staff. Our involvement in both projects was as the design engineer, construction surveying, construction management and contract administration.

Throughout these projects Gilbert Development has worked with precision under a tight time line while keeping open communication with our staff. Invoicing has been easy to follow, organized and timely. Change orders have been limited, well documented and have been in line with the unit prices set in the contract. Questions on the plans and specifications were directed to the correct parties and the appropriate time to limit unnecessary cost to the owner of the projects. The superintendents assigned to these projects were able to move the construction along aggressively without conflict with the city or support staff.

Gilbert Development has been a pleasure to work with on these projects and Rosenberg Associates is looking forward to working with them again on projects in the future.

Sincerely,

A handwritten signature in black ink, appearing to read "Travis B. Walbeck".

Travis B. Walbeck, P.E.
Project Managing Engineer
Rosenberg Associates

6249 W. GILBERT INDUSTRIAL COURT
HURRICANE, UTAH 84737

GILBERT DEVELOPMENT
CORPORATION
AND
CRUSHER RENTAL &
SALES INC

Phone: 435.627.1907
Fax: 435.627.2938
E-mail: office@gilbertdevelopment.com

SERVING THE
WEST SINCE
1975



AND



LETTERS OF RECOMMENDATION

July 13, 2013

Re: Gilbert Development Corporation

To: Whom ever it may concern

My name is Tim Martin and I am the president of Martin Consulting, LLC. Martin Consulting is one of the leading mine safety consulting companies in the U.S. I have over 38 years experience as a mine safety professional and have worked as a corporate safety director for large mining organizations and have been directly involved in several of the most recent mining disasters in the U.S. helping manage the mine rescue and recovery at the Sago Mine disaster and the UBB Mine Disaster. I serve on the health and safety committee of the (NMA) National Mining Association in Washington, DC as well as other mining associations across the nation. Martin Consulting maintains offices in Ohio and West Virginia and perform work in numerous states.



Tim A. Martin - President

P.O. Box 217
Point Pleasant, WV 25550
800-883-3581 toll free
304-521-2908 voice
815-346-5198 fax
606-923-3442 cell
tmartin@martinconsulting.net
www.martinconsulting.net

I understand there may be some confusion on the safety performance of Gilbert Development Corp. vs. CML Metals due to Gilbert Development Corp. recently attempting to change their MSHA contractor ID. I hope this letter can clear up any miss-understandings and I am more than glade to answer any additional questions that may help anyone involved. I can be reached at my office at 304-521-2908 or by cell at 606-923-3442 and/or by e-mail at tmartin@martinconsulting.net.

Martin Consulting recently performed a risk analysis of CML Metals, CML Rail and Gilbert Development Corp./Crusher # 1 surface mine for insurance purposes and made the following assessment.

Gilbert Development Corp. was evaluated to be one of the best mining contractors that we have observed in many years. They had all the necessary safety systems in place and exhibited the highest professional conduct that we have seen in a long time. Every employee that we interviewed indicated that their vice president and director demanded safety in every aspect of their jobs as well as demanding that all equipment be maintained in excellent condition. I personally interviewed their vice president during our inspection and was very impressed with his management style and the excellent conditions I found during my inspection supported everything that the employees told me.

I have included the safety performance data below that compared Gilbert Development to the CML Metals and as you can see Gilbert Develop has an excellent record.

Safety and Compliance Performance Data:

In reviewing the enclosed MSHA safety performance data it was determined that the operations had the following records:

Gilbert Development Corp/ GDC Crusher # 1 Mine

(0) Reportable Accidents 2012 (94,131) Employee Hours 2012 (1) 104a Citations
(0) Reportable Accidents 2013 (24,986) Employee Hours 2013 (4) 104a Citations

CML Metals Corp/Concentrator Plant

(1) Reportable Accidents 2012 (159,802) Employee Hours 2012 (10) Citations 2012
(1) Reportable Accident, (3) Medical Accidents 2013 (47,753) Employee Hours 2013 (11) 104a Citations 2013 (1) B Order 2013
(3) 104 D--1 Orders 2013 (3) 104D--2 Orders 2013

To-date, CML Metals has a total of \$34,515.00 in MSHA assessment fines for 2013. **Operator:** Gilbert Development Corp.

6249 W. GILBERT INDUSTRIAL COURT
HURRICANE, UTAH 84737

GILBERT DEVELOPMENT
CORPORATION
AND
CRUSHER RENTAL &
SALES INC

Phone: 435.627.1907
Fax: 435.627.2938
E-mail: office@gilbertdevelopment.com

**SERVING THE
WEST SINCE
1975**



AND



E X P E R I E N C E

RENEWABLE ENERGY

THREE CEDAR SOLAR PROJECTS-CEDAR CITY, UT

The Three Cedar Projects consisted of 2,200 acres of solar finish grading. Gilbert Developments fleet of equipment maintained a aggressive schedule based on 20,000 cubic yards of material moved per day. Approximately 1.5 million cubic yards were moved. Also consisted of 350,000 tons of road aggregate crushed and transported to the locations. Over a million gallons of water used per day.

RED HILLS SWINERTON-PAROWAN, UT

600 Acre, 80 mega watt solar field consist of all solar field grading, road access, off site improvements, electrical trenching, installation, backfill, finish grading pile driving. Due to the remote site we crushed all aggregates and placed aggregate for roads, buildings, substations, pads, etc.

MILFORD FLAT-MILFORD, UT

The project included but was not limited to construction, dust control, earthwork, and on/off site road maintenance.

LAHO SOLAR-MILFORD, UT

The project included but was not limited to construction, dust control, earthwork, and on/off site road maintenance.

GREENVILLE SOLAR-GREENVILLE, UT

The project included but was not limited to construction, dust control, earthwork, and on/off site road maintenance.

GRANITE PEAK SOLAR-MILFORD, UT

The project included but was not limited to construction, dust control, earthwork, and on/off site road maintenance.

CEDAR VALLEY SOLAR-CEDAR CITY,UT

The project included but was not limited to construction, dust control, earthwork, and on/off site road maintenance.

BUCKHORN SOLAR-IRON CO, UT

The project included but was not limited to construction, dust control, earthwork, and on/off site road maintenance.

BERYL SOLAR-BERYL, UT

The project included but was not limited to construction, dust control, earthwork, and on/off site road maintenance.

6249 W. GILBERT INDUSTRIAL COURT
HURRICANE, UTAH 84737

GILBERT DEVELOPMENT
CORPORATION
AND
CRUSHER RENTAL &
SALES INC

Phone: 435.627.1907
Fax: 435.627.2938
E-mail: office@gilbertdevelopment.com

**SERVING THE
WEST SINCE
1975**



AND



E X P E R I E N C E

DEWATERING

TWENTY-NINE PALMS: 100 YEAR FLOOD CONTROL PROJECT

For: Army Corps of Engineers Contact: Gil Salinas, Valley Grading San Diego, CA
Contract: \$4.5 million CO: Channel Redesign

Required the dewatering of existing ponds and wetlands to expand capacity of retention ponds to utilize the area for dual purposes: 80 acres of parks/retention ponds along with five (5) miles of trapezoid drainage channels. Diverted channels and excavated bottoms with excavators and six-wheel drive articulated trucks. Excavated approximately 500,000 cy

ALAMO DAM WEIR

For: Army Corps of Engineers Contact: Gil Salinas, Valley Grading San Diego, CA
Contract: \$1 million CO: None

While building a weir dam across the Bill Williams River, the entire river was diverted around the building-site, coffer dams were put into place to help keep water out, while 24 hours of continual pumping was maintained using (3) 8" Godwyn diesel pumps and miles of culvert

MT. LION ORE PIT

Dewatering of Iron Ore Pit was maintained 24 hours to keep pit dry for the purpose of extracting Iron Ore from the pit. Water was pumped through 5 miles of HDPE pipe to a retention pond outside of the extracting zone.

LINCOLN LIFT STATION

For: Clark County Sewer District Contact: Blanchard Construction
Contract: \$2 million CO: None

Dewatering system was set up around the perimeter of the project to remove the ground water in order for the lift station to be constructed. De-watering extended 40 ft deep and utilized over (30) 3" pumps

BUILDINGS

CR&S / KOMATSU EQUIPMENT SHOP AND OFFICE

Erected 50,000 SF Steel Building and 10,000 SF Office, complete with earthwork, utilities, concrete and ancillary buildings.

DESERT CORRECTIONAL FACILITY (PRISON)

General Engineering and General Contractor for a complete Prison compound with excavation, paving, utilities, buildings, guard towers. (\$36 Million)

MANUFACTURING & SHOP FACILITY WITH MAINTENANCE & STORAGE BUILDINGS

Complete Manufacturing and support facility spread over 10 acres, with Steel Fab buildings, pavement.

BAPTIST CHURCH (\$1 Million)

MERVYN'S DEPARTMENT STORE (\$6 Million)

SUTTER HILL SHOPPING CENTER General Contractor (\$40 Million)

6249 W. GILBERT INDUSTRIAL COURT
HURRICANE, UTAH 84737

GILBERT DEVELOPMENT
CORPORATION
AND
CRUSHER RENTAL &
SALES INC

Phone: 435.627.1907
Fax: 435.627.2938
E-mail: office@gilbertdevelopment.com

SERVING THE
WEST SINCE
1975



AND



EXPERIENCE

MINING

I-70 INTERSTATE

UDOT Project under Ball Ball Brosamer

Crushed, washed and produced one million (1,000,000) tons of concrete rock products for Ball Ball Brosamer to maintain a rate of twelve thousand (12,000) cubic yards of concrete a day on the interstate.

Contract: \$32 Million

Screening and washing process required use of:

2 – 600 ton/hour crushing/screening plants

8 x 20 Three (3) Deck with Twin 48” screws

3 x 16 Three (3) Deck with a 36” screw

COMSTOCK IRON MINES

For: Geneva Steel, US Steel, Palladon Ventures, CML Metals Corporation

Contract: \$20 million per year, long term contract

Extracted iron ore from pit, transported it to crusher and crushed iron ore from 3’ minus down to 3/8” minus, at a rate of 8,000 to 9,000 tons a day. Designed pilot plants and took lead in engineering oversight for design of concentrate plant for Geneva Steel. Maintained this rate for approximately 10 years while under contract with USX Corporation and Geneva Steel, and then for CML Metals Corporation.

Screening and washing process required use of:

1200 ton/hour crushing plant

2 – 6 x 16 Three (3) Deck screen

Magnet Separators

6 x 16 Two (2) Deck with 36” screw

THE LEDGES

Private Sub-Division Project RA McKell Construction

An on-site crushing project to produce UDOT specifications road base material from oversized natural material on the project. Oversized material crushed to 3/4” UDOT spec road base at a rate of 450 tons per hour.

Screening process consisted in the use of:

6356 Crush Boss Primary Plant

6249 W. GILBERT INDUSTRIAL COURT
HURRICANE, UTAH 84737

GILBERT DEVELOPMENT
CORPORATION
AND
CRUSHER RENTAL &
SALES INC

Phone: 435.627.1907
Fax: 435.627.2938
E-mail: office@gilbertdevelopment.com

**SERVING THE
WEST SINCE
1975**



AND



E X P E R I E N C E

MATERIAL PROCESSING

ENTRADA

For: Split Rock St. George, UT
Private Sub-Division Project

An onsite crushing project to produce 6" minus material from oversized HARD lava rock, at the rate of 400 tons per hour for the use of structural fill on the project.

Screening process consisted in the use of:
4142 Closed Circuit Crush Boss™ Plant

BELLA VISTA

For: Ence Construction St. George, UT (150,000 tons)
Private Sub-Division Project

An on-site crushing project to produce 6" minus material from oversized HARD Basalt lava rock, at the rate of 400 tons per hour for the use of structural fill on the project.

Screening process consisted in the use of:
6356 Crush Boss Primary Plant (200,000 tons)

CORAL CANYON—AREA 3

Private Sub-Division Project
\$28 Million General Engineering Contract

An on-site crushing project to produce 6" minus material from oversized HARD lava rock, at the rate of 400 tons per hour for the use of structural fill on the project (over 700,000 tons).

Screening process consisted in the use of:
6356 Crush Boss Primary Plant

AGGREGATE PIT / WASH PLANTS

Operated several commercial gravel pits in the following cities:

Cedar City, Utah	Bulldog Road Pit
Hurricane, Utah	SR9 Gravel Pit
Las Vegas, Nevada	Lone Mountain Pit & Sunrise Mountain Pit

Each gravel pit produced spec materials of different sizes. Production rates were determined on supply and demand of our clients, which ranged from 250,000 tons per year to 750,000 tons per year.

6249 W. GILBERT INDUSTRIAL COURT
HURRICANE, UTAH 84737

GILBERT DEVELOPMENT
CORPORATION
AND
CRUSHER RENTAL &
SALES INC

Phone: 435.627.1907
Fax: 435.627.2938
E-mail: office@gilbertdevelopment.com

SERVING THE
WEST SINCE
1975



AND



EXPERIENCE

MATERIAL PROCESSING

MANUFACTURING OF CRUSHING / PROCESSING EQUIPMENT

Crusher Rental & Sales (sister company of Gilbert Development Corporation) was formed to provide quality, reliable and dependable crushing equipment for the construction/mining industry. With products from semi-portable all-in-one plants to custom permanent installations of any size.



Crusher Rental & Sales provides the most reliable crushers, impactors, screens, feeders and conveyors in the market. Our line of top quality equipment is matched only by our top quality service and delivery. Crusher Rental & Sales is the only place to find the incredible **Crush Boss™** Impactor - the most effective impactor in the world.



"Built by Crushing Contractors for Crushing Contractors"

6249 W. GILBERT INDUSTRIAL COURT
HURRICANE, UTAH 84737

GILBERT DEVELOPMENT
CORPORATION
AND
CRUSHER RENTAL &
SALES INC

Phone: 435.627.1907
Fax: 435.627.2938
E-mail: office@gilbertdevelopment.com

**SERVING THE
WEST SINCE
1975**



AND



E X P E R I E N C E

EARTH EMBANKMENTS

TWENTY-NINE PALMS:

100 Year Flood Control Project

For: Army Corps of Engineers Contact: Gil Salinas, Valley Grading San Diego, CA

Contract: \$4.5 million CO: Channel Redesign

ALAMO DAM WEIR

For: Army Corps of Engineers Contact: Gil Salinas, Valley Grading San Diego, CA

Contract: \$1 million CO: None

The weir dam consisted of building a dam with excavation to revile bedrock, placing zone specific aggregates, and placement of concrete.

DETENTION PONDS – STORM WATER STORAGE

Many of our projects required the construction of storm water detention ponds to hold storm water collection on-site with the ability to control release the water when needed.

Valley View Medical Center, Dixie Regional Medical Center, Coral Canyon Area 3, Elim Valley, O’Sullivan’s and Orgill have all had similar structures to accommodate 100 year floods in a desert landscape.

LINCOLN LIFT STATION

For: Clark County Sewer District Contact: Blanchard Construction

Contract: \$2 million CO: None

Excavate with 5 cy dragline on Einsley crane, stabilize floor with cobble and install floating concrete slab.

HDPE PIPELINES

COMSTOCK IRON MINES

For: Geneva Steel, US Steel, Palladon Ventures Contact: John Cutler, CEO 801-521-5252, CML Metals Corporation

Contract: \$20 million per year, long term contract CO: None

Five miles of 6” diameter HDPE pipeline was installed to transfer water from the excavation site of pit to a storage pond located out of the construction zone.

ELIM VALLEY

Private Sub-Division

Hurricane, UT

Miles of HDPE pipe of all sizes along with valves and fittings were installed for the whole sub-division located in the Hurricane City limits. Sizes ranged from 6” to 24”.

We currently have 5 certified HDPE installers and a number of trained installers.

6249 W. GILBERT INDUSTRIAL COURT
HURRICANE, UTAH 84737

GILBERT DEVELOPMENT
CORPORATION
AND
CRUSHER RENTAL &
SALES INC

Phone: 435.627.1907
Fax: 435.627.2938
E-mail: office@gilbertdevelopment.com

SERVING THE
WEST SINCE
1975



AND



EXPERIENCE

CONCRETE WORK

CERRO COPPER

Private Manufacturing Facility
Cedar City, UT

Extensive footings and finish slab for furnaces and complete 300,000 sq ft copper finishing plant.

I-70

Provided spec materials to on-site batch plant, 12-13,000 cy per shift for freeway expansion. (2000 million tons in six months)

CEDAR CITY MANUFACTURING FACILITY

Structural Concrete, building slabs, footings for manufacturing facility

CR&S / KOMATSU EQUIPMENT SHOP FACILITY

Structural Concrete, building slabs, footings for 50,000 sf manufacturing facility

DESERT CORRECTIONAL CENTER

Complete Concrete Lining for all sewer detention reservoirs

ALAMO DAM

Concrete for Corp of Engineers for weir across Bill Williams River

WETLANDS MITIGATION

TWENTY-NINE PALMS

100 Year Flood Control Project

For: Army Corps of Engineers Contact: Gil Salinas, Valley Grading San Diego, CA

Contract: \$4.5 million CO: Channel Redesign

Existing wetlands on this project were extended to provide water retention area to be used as park.

CORAL CANYON—Area 2, 3, 4, 6 and 14

Private Sub-division (Approximately \$35 Million)

Parks were developed with contouring property with rolling hills, placement of topsoil and planted for grass. Mitigation of “Do Not Disturb” protected areas with reclamation of areas that had to be disturbed and put back to original conditions.

ENGINEERING

GDC has contracted and overseen engineering for a number of projects. With in house design and surveying services available. GDC has also worked under the direction of Owners Engineers to assist them in completing projects on time and in budget.

6249 W. GILBERT INDUSTRIAL COURT
HURRICANE, UTAH 84737

GILBERT DEVELOPMENT
CORPORATION
AND
CRUSHER RENTAL &
SALES INC

Phone: 435.627.1907
Fax: 435.627.2938
E-mail: office@gilbertdevelopment.com

**SERVING THE
WEST SINCE
1975**



AND



S E L E C T P R O J E C T S

THREE CEDAR SOLAR PROJECTS

2015-2016

The Three Cedar Projects consisted of 2,200 acres of solar finish grading . Gilbert Developments fleet of equipment maintained a aggressive schedule based on 20,000 cubic yards of material moved per day. Approximately 1.5 million cubic yards where moved.

Also consisted of 350,000 tons of road aggregate crushed and transported to the locations.

Over a million gallons of water used per day.



6249 W. GILBERT INDUSTRIAL COURT
HURRICANE, UTAH 84737

**GILBERT DEVELOPMENT
CORPORATION
AND
CRUSHER RENTAL &
SALES INC**

Phone: 435.627.1907
Fax: 435.627.2938
E-mail: office@gilbertdevelopment.com

SERVING THE
WEST SINCE
1975



AND



SELECT PROJECTS

THREE CEDAR SOLAR PROJECTS

2015-2016



6249 W. GILBERT INDUSTRIAL COURT
HURRICANE, UTAH 84737

GILBERT DEVELOPMENT
CORPORATION
AND
CRUSHER RENTAL &
SALES INC

Phone: 435.627.1907
Fax: 435.627.2938
E-mail: office@gilbertdevelopment.com

SERVING THE
WEST SINCE
1975



AND



SELECT PROJECTS

SWINTERTON RENEWABLE ENERGY

2014-2016

Owner-Scatec-Sun Edison
Contact: Chris Loo
Senior Superintendent
Phone (858) 964-8269



6249 W. GILBERT INDUSTRIAL COURT
HURRICANE, UTAH 84737

GILBERT DEVELOPMENT
CORPORATION
AND
CRUSHER RENTAL &
SALES INC

Phone: 435.627.1907
Fax: 435.627.2938
E-mail: office@gilbertdevelopment.com

SERVING THE
WEST SINCE
1975



AND



SELECT PROJECTS

SWINTERTON RENEWABLE ENERGY

2014-2016

Owner-Scatec-Sun Edison
Contact: Chris Loo
Senior Superintendent
Phone: (858) 964-8269



6249 W. GILBERT INDUSTRIAL COURT
HURRICANE, UTAH 84737

GILBERT DEVELOPMENT
CORPORATION
AND
CRUSHER RENTAL &
SALES INC

Phone: 435.627.1907
Fax: 435.627.2938
E-mail: office@gilbertdevelopment.com

**SERVING THE
WEST SINCE
1975**



AND



S E L E C T P R O J E C T S

LHOIST NORTH AMERICA

2014-2015

**Owner: Lhoist North America
Contact: Carla Lopez
Purchasing Agent
Phone: (928) 848-8564**

Project consists of extensive haul road pioneering on vertical face cliff to allow productive mining on Vegas Hill. Project also consists of two million ton of drilled, blasted and hauled over burden removal.



6249 W. GILBERT INDUSTRIAL COURT
HURRICANE, UTAH 84737

**GILBERT DEVELOPMENT
CORPORATION
AND
CRUSHER RENTAL &
SALES INC**

Phone: 435.627.1907
Fax: 435.627.2938
E-mail: office@gilbertdevelopment.com

**SERVING THE
WEST SINCE
1975**



AND



S E L E C T P R O J E C T S

COMSTOCK IRON MINE

**1985-1995
2007-2014**

Gilbert Development Corporation has been the contract miner for the three previous owners, USX (1985-1987) and Geneva Steel (1987-1995), and CML Metals Corporation (2007-2014). Productions of 2 million metric tons of ore and 2 million metric tons of waste per year. Responsibilities have included: mining of open pit existing mines, opening of new pits (including 'tip-top' sitting on the highest point on Iron Mountain that many said could never be mined), blasting, hauling, crushing, processing of iron ore, waste haulage, pit dewatering, reclaiming of low grade waste dumps, magnetic separation, wet concentrate processing, loading/scheduling with Union Pacific Railroad, and railroad expansion. Gilbert Development in association with Crusher Rental & Sales have designed/built/maintained and operated all processing facilities including a train load-out rated at 6000 shtph, tunnel reclamation system, and crushing facilities capable of producing more than 2000 shtph.



6249 W. GILBERT INDUSTRIAL COURT
HURRICANE, UTAH 84737

**GILBERT DEVELOPMENT
CORPORATION
AND
CRUSHER RENTAL &
SALES INC**

Phone: 435.627.1907
Fax: 435.627.2938
E-mail: office@gilbertdevelopment.com

**SERVING THE
WEST SINCE
1975**



AND



S E L E C T P R O J E C T S

CML EMERGENCY WATER LINE

2013

Gilbert Development was the general contractor for the 13 mile emergency high pressure water line, which consisted of ductile iron, DR12 and DR14 PVC pipe. This project also included a 50' x 20' block booster station building which houses up to four horizontal 300 hp 350 psi pumps all VFD controlled with remote scada capabilities. Gilbert Development worked a 24/7 schedule to complete the 13 mile pipe line in 13 days.



6249 W. GILBERT INDUSTRIAL COURT
HURRICANE, UTAH 84737

**GILBERT DEVELOPMENT
CORPORATION
AND
CRUSHER RENTAL &
SALES INC**

Phone: 435.627.1907
Fax: 435.627.2938
E-mail: office@gilbertdevelopment.com

**SERVING THE
WEST SINCE
1975**



AND



S E L E C T P R O J E C T S

COMSTOCK IRON MINE

**1985-1995
2007-2014**

General contractor on the mill site. Completed in one year with over 8,000 cubic yards of structural concrete poured in place.



6249 W. GILBERT INDUSTRIAL COURT
HURRICANE, UTAH 84737

**GILBERT DEVELOPMENT
CORPORATION
AND
CRUSHER RENTAL &
SALES INC**

Phone: 435.627.1907
Fax: 435.627.2938
E-mail: office@gilbertdevelopment.com

**SERVING THE
WEST SINCE
1975**



AND



S E L E C T P R O J E C T S

CML HYPERBARIC BUILDING

2014

Gilbert Development was the general contractor of the hyperbaric dewatering system installed at the CML Metals Mill, located at the Comstock Mine site. This is a 15 million dollar project which allowed CML Metals to lower their final product moisture content by up to 6%. This project also made it possible to discontinue use of the diesel ran dryers which was a large financial advantage. During this project Gilbert Development was the acting general contractor, which in turn has lead to us doing the full fabrication of the hyperbaric structure followed by the full erection of the structure.



6249 W. GILBERT INDUSTRIAL COURT
HURRICANE, UTAH 84737

**GILBERT DEVELOPMENT
CORPORATION
AND
CRUSHER RENTAL &
SALES INC**

Phone: 435.627.1907
Fax: 435.627.2938
E-mail: office@gilbertdevelopment.com

**SERVING THE
WEST SINCE
1975**



AND



S E L E C T P R O J E C T S

SR-9 HARRISBURG CONSTRUCTION AGGREGATE PIT **CORAL CANYON DEVELOPMENT**

2003-2008

Owner: Suncor Development Corp.
Contact: Mike Gardner
Project Manager
Phone: 435.634.9455

Contract miner for aggregate operation. Annual production in excess of 500,000 tons. Products included Type II DOT spec road base, 3/8 minus sand (gas line bedding spec), washed landscape rock (various sizes), washed concrete aggregates, landscape boulders, and rip-rap.

Multi-phase general contractor for earthwork, utilities, structural walls, concrete, asphalt, electrical at the master planned Coral Canyon Development for Suncor Development Corporation.



6249 W. GILBERT INDUSTRIAL COURT
HURRICANE, UTAH 84737

**GILBERT DEVELOPMENT
CORPORATION
AND
CRUSHER RENTAL &
SALES INC**

Phone: 435.627.1907
Fax: 435.627.2938
E-mail: office@gilbertdevelopment.com

SERVING THE
WEST SINCE
1975



AND



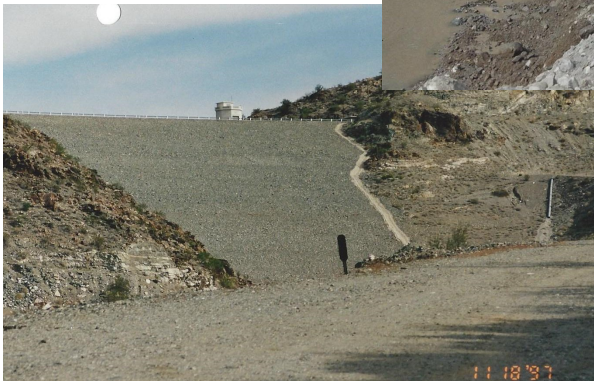
SELECT PROJECTS

ALAMO DAM WEIR

1997

Owner: Army Corps. Of Engineers

Complete water diversion to construct weir, built two coffer dams including complete dewatering and river diversion.



6249 W. GILBERT INDUSTRIAL COURT
HURRICANE, UTAH 84737

GILBERT DEVELOPMENT
CORPORATION
AND
CRUSHER RENTAL &
SALES INC

Phone: 435.627.1907
Fax: 435.627.2938
E-mail: office@gilbertdevelopment.com

SERVING THE
WEST SINCE
1975



AND



SELECT PROJECTS

TWENTY-NINE PALMS

Owner: Army Corps. Of Engineers

100-200 year flood prevention. Dewater two detention basins and deepen them.



6249 W. GILBERT INDUSTRIAL COURT
HURRICANE, UTAH 84737

GILBERT DEVELOPMENT
CORPORATION
AND
CRUSHER RENTAL &
SALES INC

Phone: 435.627.1907
Fax: 435.627.2938
E-mail: office@gilbertdevelopment.com

**SERVING THE
WEST SINCE
1975**



AND



C A P A B I L I T I E S

RECLAMATION

Gilbert Development Corporation has the trained personnel and specialized machinery to promote reclamation success in a variety of conditions. GDC has effectively worked large and small scale projects. Our fleet of equipment and trained personnel are more than capable to accomplish several levels of reclamation.

Reclamation for: exploration drill sites, gravel quarries, highway corridors, landfills, mined lands, mountain developments, open space area, pipelines, drainage canals.



6249 W. GILBERT INDUSTRIAL COURT
HURRICANE, UTAH 84737

**GILBERT DEVELOPMENT
CORPORATION
AND
CRUSHER RENTAL &
SALES INC**

Phone: 435.627.1907
Fax: 435.627.2938
E-mail: office@gilbertdevelopment.com

SERVING THE
WEST SINCE
1975



AND



CAPABILITIES

RECLAMATION



Development of 100 year
flood prevention canal for the
Army Corp of Engineers.

Removed old shovel from Iron Mountain mine during reclamation. Shovel donated to the Iron Mission State Park.



Continuous mine reclamation during active mining operations.



Top soil removal and stockpile
during reclamation.



6249 W. GILBERT INDUSTRIAL COURT
HURRICANE, UTAH 84737

GILBERT DEVELOPMENT
CORPORATION
AND
CRUSHER RENTAL &
SALES INC

Phone: 435.627.1907
Fax: 435.627.2938
E-mail: office@gilbertdevelopment.com

**SERVING THE
WEST SINCE
1975**



AND



C A P A B I L I T I E S

CONTRACT MINING

We have extensive mining experience in precious metals, iron ore, and construction aggregate. Specializing in open pit high volume and reclamation. Projects have included: milling, leech processing, magnetic separation, blasting, surface mining, de-watering, crushing, mine planning, construction, train loading, highway truck loading, engineering and surveying. By running a fleet of the best equipment possible we are productive, economical and safe. We work closely with MSHA, Division of Air Quality, Department of Gas Oil and Mining, other governmental agencies and have received numerous safety awards on our projects. We have also played major roles in mine development including mill/process/plant design, pit design, permitting, public/investor relations, and contract negotiations.



EARTHWORK



Gilbert Development has over 37 years of earthwork experience, in Utah, Nevada, and California. High-grade business philosophies-such as maintaining a top of the line fleet, providing excellent customer relations, maintaining exceptional quality of work while being productive and safe, have allowed us to excel at earthwork. Completing a variety of projects: cells, haul roads, overburden removal, topsoil stripping, reclamation, railroad expansions, dams, subdivisions, drainage channels, commercial/industrial sites, hospitals, state roads and freeway jobs, military work, and airports, gives us an impressive roster and proves we are always up for a challenge. We offer complete turnkey services from conceptual design to finished site. We also have a full fleet of support equipment: dust control, service, and maintenance, as well as top of the line GPS equipment and an in-house engineering department. We have the capabilities to take on any size project and leave the customer with the highest quality product possible.

6249 W. GILBERT INDUSTRIAL COURT
HURRICANE, UTAH 84737

**GILBERT DEVELOPMENT
CORPORATION
AND
CRUSHER RENTAL &
SALES INC**

Phone: 435.627.1907
Fax: 435.627.2938
E-mail: office@gilbertdevelopment.com

SERVING THE
WEST SINCE
1975



AND



CAPABILITIES

CRUSHING - AGGREGATE/ORE/RECYCLING

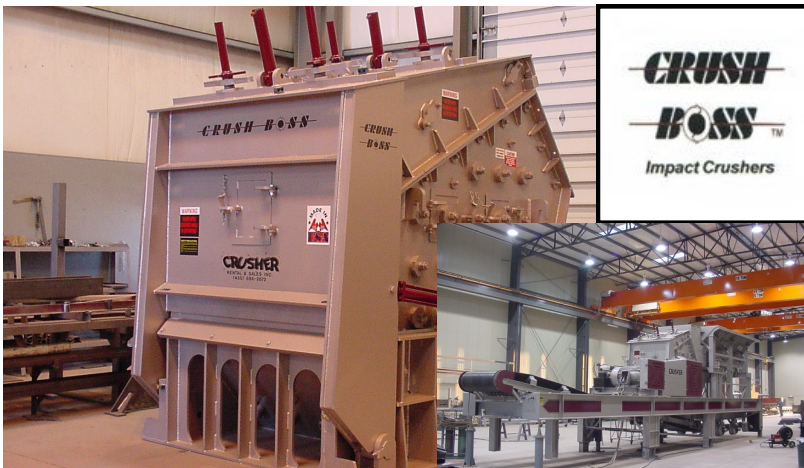
We not only provide on-site portable crushing, installing and operating permanent installations, we also manufacture our own equipment through our manufacturing division **Crusher Rental & Sales**. We have completed all types of crushing and screening: construction aggregates, landscape materials, building demolition and recycling, precious metals, metal/nonmetal ores, washed products, milling, magnetic separation and leech processing. We always use the right equipment for the job and can provide any service including haulage, dust control, permitting, and maintenance. With highly trained MSHA certified employees and experienced supervision we possess the know-how to tackle any crushing application.



MANUFACTURING / MATERIAL HANDLING

*“Built for Crushing Contractors By
Crushing Contractors”*

Our motto says it all. We manufacture a full line of products for bulk material handling, from crushing plants and washing plants, to screening plants and conveyor systems. Models available configured as portable or stationary. We field test our own products before they ever go into production so your sure to get the highest quality, most productive equipment available. Our proprietary Horizontal Shaft Impactor, the **Crush Boss™**, comes in a variety of capacities from 200 shtph to over 2000 shtph with a 84” throat and is featured in our plants. We offer full design/build and in-house manufacturing as well as part runs and shop/manufacturing/machine services for any project of any size.



6249 W. GILBERT INDUSTRIAL COURT
HURRICANE, UTAH 84737

GILBERT DEVELOPMENT
CORPORATION
AND
CRUSHER RENTAL &
SALES INC

Phone: 435.627.1907
Fax: 435.627.2938
E-mail: office@gilbertdevelopment.com

**SERVING THE
WEST SINCE
1975**



AND



C A P A B I L I T I E S

UTILITIES

We install a wide variety of pipe for various utility services: ductile, PVC, fused HDPE, ADS, RCP and metal corrugated. As well as structures and assemblies: manholes, vaults, valves, PRV, pump stations, tanks, dewatering systems, and ponds. We have worked in residential, commercial, industrial, government, and mining applications. With on-site crushing or off-site import we have the ability to meet any specifications. All work is completed with quality, efficiency, cost, and safety in mind. Whether the job requires trenching, excavation, or both, we provide full dig/lay/backfill/testing services all the way through 72" diameter pipe at any depth, and extensive de-watering projects.



DESIGN/BUILD, TURNKEY AND PROJECT MANAGEMENT



We have completed subdivisions, mines, aggregate pits, loadout facilities, crushing/processing facilities, roads, and commercial/industrial sites with services from conceptual to turnkey finish product for our customers. We are capable of handling design/engineering, feasibility, pre-construction, bidding, manufacturing, construction management, general contracting, testing, quality control/quality assurance and anything in-between.

6249 W. GILBERT INDUSTRIAL COURT
HURRICANE, UTAH 84737

**GILBERT DEVELOPMENT
CORPORATION
AND
CRUSHER RENTAL &
SALES INC**

Phone: 435.627.1907
Fax: 435.627.2938
E-mail: office@gilbertdevelopment.com

SERVING THE
WEST SINCE
1975



AND



CAPABILITIES

BUILDING

From the early 1970's GDC has built and designed office complexes, manufacturing, maintenance facilities, office complexes, prisons, and commercial department stores in the western United States. Offering full GC services for all types of buildings from design to commissioning.



6249 W. GILBERT INDUSTRIAL COURT
HURRICANE, UTAH 84737

GILBERT DEVELOPMENT
CORPORATION
AND
CRUSHER RENTAL &
SALES INC

Phone: 435.627.1907
Fax: 435.627.2938
E-mail: office@gilbertdevelopment.com

**SERVING THE
WEST SINCE
1975**



AND



EQUIPMENT

OVERVIEW

Gilbert Development Corporation retains a fleet of well maintained, top of the line equipment. The fleet consists of a number of dozers, scrapers, compactors, water trucks, motor-graders, excavators, rock trucks, loaders, fuel/lube service trucks, mechanic service trucks, on highway transportation and miscellaneous support equipment. Some highlights have been: Komatsu D475 Dozer (the second largest they make), Komatsu WA900 Loader, Komatsu PC800 excavators, Komatsu PC2000, Komatsu 785 (100 ton) rock trucks, CAT 777 (100 ton) rock trucks, CAT 785 (150 ton) rock trucks, CAT 992 Loaders, CAT 14M blade and a recently purchased state-of-the-art Kenworth Fuel/Lube service truck.



6249 W. GILBERT INDUSTRIAL COURT
HURRICANE, UTAH 84737

**GILBERT DEVELOPMENT
CORPORATION
AND
CRUSHER RENTAL &
SALES INC**

Phone: 435.627.1907
Fax: 435.627.2938
E-mail: office@gilbertdevelopment.com

**SERVING THE
WEST SINCE
1975**



AND



KEY MANAGEMENT

STEVE L. GILBERT

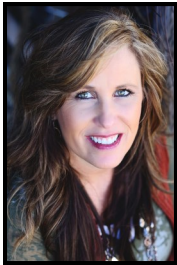


President/Director/CEO

After working in construction for 15 years, Steve Gilbert founded Gilbert Development Corporation in 1975. Over 50 years designing processes and managing projects in highway construction, building construction, commercial/industrial developments, airport development, subdivision development, crushing operations, crushing manufacturing and mining operations, along with several patents issued and/or pending in manufacturing applications and new equipment innovations.

Responsibilities : Oversight

ANDREA H. JOLLEY



Secretary/Treasurer/Director

Andrea has been with the company since 1985 as the Administrative Assistant to the President and CEO of Gilbert Development Corporation.

Responsibilities : Oversight

ADAM URQUIDEZ



Vice President/Director

Over 10 years experience in construction, turnkey projects, including: heavy highway projects, design build projects.

Responsibilities : Oversight

6249 W. GILBERT INDUSTRIAL COURT
HURRICANE, UTAH 84737

GILBERT DEVELOPMENT
CORPORATION
AND
CRUSHER RENTAL &
SALES INC

Phone: 435.627.1907
Fax: 435.627.2938
E-mail: office@gilbertdevelopment.com

**SERVING THE
WEST SINCE
1975**



AND



KEY MANAGEMENT

CORY MOULDEN



General Field Manager

Over 15 years experience in construction: residential subdivision turnkey projects. Extended experience in specialty projects such as golf courses (The Ledges, St George, UT), diversion of the Provo River, on the Deer Creek metering station.

Responsibilities : On-site Manager

SCOTT RHODES



Chief Operating Officer,

Scott has combined experience in engineering and design with both Gilbert Development Corporation and Crusher Rental & Sales, Inc. since 1990.

Responsibilities : QC and Oversight

LAURIE DAVIS



Officer/Director

Laurie has been with the company since 1995 as the Administrative Assistant to the President and CEO of Crusher Rental & Sales, Inc.

Responsibilities : Oversight

MIKEN LARSON



Chief Financial Officer

Corporate Controller for Gilbert Development Corporation since 2011, bringing over 36 years of accounting experience to the team; specializing in construction, mining and manufacturing operations.

Responsibilities : CFO

6249 W. GILBERT INDUSTRIAL COURT
HURRICANE, UTAH 84737

GILBERT DEVELOPMENT
CORPORATION
AND
CRUSHER RENTAL &
SALES INC

Phone: 435.627.1907
Fax: 435.627.2938
E-mail: office@gilbertdevelopment.com

**SERVING THE
WEST SINCE
1975**



AND



O R G A N I Z A T I O N

HISTORY

Gilbert Development (GDC) a Nevada Corporation based out of Las Vegas, Nevada, at its inception in 1975 has been developing projects large and small throughout the Western United States. We take pride in providing turn-key projects from start to finish which includes management and coordination throughout the project. Our scope of work includes massive earthwork, rock excavation, blasting, crushing; infrastructures for water, sewer, storm-drain, and flood detentions; finishing off with the site improvements of trail systems, parks, concrete and paving.

Projects we have completed range from design built, to engineered projects from airport developments, road ways to commercial and industrial developments, housing, hospitals, prisons, sub-divisions, dams and mining operations.

Our mining experience includes gold, iron ore, gypsum and aggregate operations. GDC's mining projects have expanded into manufacturing of material handling systems including, crushing plants, conveyors and other processing equipment. Our products have been designed and used in our operations and are presently sold worldwide through Crusher Rental & Sales (CR&S) www.crushboss.com.

In 1986, GDC and CR&S moved its Corporate Office to Southern Utah and just completed a 50,000 sq ft equipment maintenance and manufacturing facility and 15,000 sq ft office in Hurricane, Utah, doubling the size of our previous facility in Cedar City, Utah.

GDC has worked with many private and government agencies from Cal Trans, NDOT, UDOT, Army Corps of Engineers, and city entities from California, Nevada, Arizona, and Utah. GDC works closely with both OSHA and MSHA and has received many safety awards throughout the years.

CLAIMS

Gilbert Development Corporation takes pride in the fact that we have no claims to report though our average job exceeds \$5 million in contract value.

PROJECT SCHEDULING

Gilbert Development Corporation has always completed all projects on or before completion dates. We have never paid liquidated damages. By attending pre-construction meetings, progress meetings and communicating with project managers, owners and engineers.

6249 W. GILBERT INDUSTRIAL COURT
HURRICANE, UTAH 84737

**GILBERT DEVELOPMENT
CORPORATION
AND
CRUSHER RENTAL &
SALES INC**

Phone: 435.627.1907
Fax: 435.627.2938
E-mail: office@gilbertdevelopment.com

SERVING THE
WEST SINCE
1975



AND



FACILITIES

OVERVIEW

In 2007 Gilbert Development and Crusher Rental & Sales relocated all facilities and offices to Hurricane, Utah. The new complex, Gilbert Industrial Court, sits on 40 acres of prime industrial/commercial land overlooking Coral Canyon and the scenic Desert Hills Reserve with beautiful Pine Valley Mountain as the backdrop. Our facilities include a 15,000 sq ft corporate office and an over 40,000 sq ft shop with over 30 acres of yard for showing off our products. Gilbert Industrial Court is being developed to accommodate other businesses facilities as well.



6249 W. GILBERT INDUSTRIAL COURT
HURRICANE, UTAH 84737

GILBERT DEVELOPMENT
CORPORATION
AND
CRUSHER RENTAL &
SALES INC

Phone: 435.627.1907
Fax: 435.627.2938
E-mail: office@gilbertdevelopment.com