

Vol. 17 No. 14
April 5, 2019

f **FREE** Every Friday
www.hawkeyetrader.com

YOUR HAWKEYE TRADER

Phone: 641-675-3971 • Fax: 888-203-9720 • E-Mail: ads@hawkeyetrader.com

THOMAS
BUS SALES, INC. TRAILERS TOO!



5636 NE 14th Street • Des Moines, IA • 515-265-6056 • 800-362-2092
www.thomasamerican.com • info@thomasamerican.com
8:00-5:00 M-F • Saturday by Appointment Only

Over 400 Trailers In Stock! • Iowa's Largest Trailer Dealer!

Ask Us About Our DOT Inspection Service
Call For Information & The **BEST** Price In The Nation!

Big Tex 14LX/GX Dump Trailers



Starting @
\$6495

83" Wide x 12', 14' or 16' Lengths
Available In Bumper Pull or
Gooseneck Setup With
Dual Jacks

7K Dexter Axle • Scissor Hoist • Tarp Kit
Skid Loader Ramps • Under Body Storage
On Board 110V Charger • Combo Doors
24" Sides W/Upright Reinforcements



Starting @
\$6,995

Call For Information & the **BEST** Price In The Nation!

14GN - 7K Axle Trailer w/15,900# GVWR
22GN - 10K Axle Tandem Dual W/23,900# GVWR
Several Sizes & Configurations Available!

Pierced Frame • Low Profile Setup
Dual Jacks W/Toolbox In Between Jacks
Side Steps W/Grab Handles • Dexter Axles-7K or 10K
Bulldog 30K Adjustable Coupler On 22GN
Dexter Adjustable Suspension On 22GN



**Midkota Tilt
Bed Equipment
Trailers**
Pallet Fork Holders
A-Frame ToolBox
Spare Tire Mount

Starting at \$6,595



SURE-TRAC 10K DUMP TRAILERS

Skid Loader Ramps
10' & 12' Lengths
10' - \$5,294
12' - \$5,595



NOW SELLING & INSTALLING CM TRUCK BEDS!

CALL FOR MORE
INFORMATION!!!



BIG TEX 30ES-10 UTILITY TRAILER

5' x 10'
Rear Rampgate, 4 Tie Loops,
3500# Axle, 3 Yr. Structural
Warranty
SPRING SPECIAL!!!
\$1,195

KARS, INC

www.karsincdsm.com

ONE EUCLID

Come See Wes

2000 E. Euclid
Des Moines, IA
515-265-0215



2007 Toyota Tundra SR5
4x4, 5.7 V8, Auto, Crew Cab, Full Power,
Keyless Entry, CD, 143K
\$14,995



2014 Ford Fusion Titanium
AWD, 2.0 4 Cyl, Loaded, Heated Leather,
Full Power, CD, HD Radio, W/ET Hot Spot,
Turbo Charged, 92K, **\$13,995**



2014 Toyota Sienna XLE
V6, Auto, 8 Passenger, Loaded,
Heated Leather, Sunroof, MP3/CD, 104K
\$16,995



2008 Chevy Avalanche LTZ
Crew, 4x4, 5.3 V8, Auto, Heated Leather
Seats, Loaded, Full Power, Sunroof,
CD Changer, 131K, **\$14,995**



2004 Chevy Silverado K2500HD LS
Ext Cab, 4 Dr, 4x4, 6.0 Duramax Diesel,
Auto, Full Power, Cloth Seats, 147K,
\$15,995



2009 Ford Mustang
4.0 V6, Well Equipped, CD,
Keyless Entry, 104K
\$6,995



2001 Chevy Silverado K1500 LS
Ext Cab, 4x4, 5.3 V8, 271, Loaded,
Leather, Only 89K Miles
\$11,995



2002 Chevy Silverado K1500HD LT
Crew Cab, 4x4, 6.0 V8, Auto, Loaded,
Leather, Full Power, 225K
\$7,995



2015 Ford F250 XLT
4x4, Crew Cab, 6.2 V8, Flex Fuel, Loaded,
Cloth, Full Power, Bed Cover, 65K
\$29,995



2004 Chevy Silverado K2500 LT
Crew Cab, 4x4, 6.0 V8, Auto, Loaded,
Leather, Full Power, Only 74K Miles!
One Owner! **\$14,995**



2008 Ram 2500 SLT
Quad Cab, 4x4, Auto, 6.7 Cummins Diesel,
Full Power, Loaded, Cloth, Only 106K Miles
\$22,995



2009 GMC Sierra SLT K1500
Crew Cab, 271, 4x4, 5.3 V8, Auto,
Loaded, Leather, Full Power, 150K, Clean!
\$14,695



2014 Chevy Camaro SS
6.2 V8, Auto, Loaded, Full Power,
Leather, MP3, SHAK! Only 14K
\$24,995



2011 Chevy Silverado K2500HD LTZ
4x4, 271, Crew Cab, 6.0 V8, Auto,
Loaded, Leather, Full Power, 148K
\$28,995



2009 GMC Yukon SLT w/WSB
4x4, 5.3 V8, Auto, Loaded, Leather,
Sunroof, 3rd Row Seating, One Owner!
151K, **\$14,995**

Selling Land & the Equipment to Farm it

Since 1960

STEFFES

319.385.2000 • SteffesGroup.com

20' & 40' Storage Containers
Starting at \$1,895
For Sale or Rent

Dry & Mouse Proof

ABC Portable Storage

Delivery Available
563-299-2901

★★★★★

5-STAR SPRAY FOAM INC.

BROOKLYN MONTEZUMA

We Now Offer CONCRETE RAISING & LEVELING

Open Cell & Closed Cell Foam
Call or Email Craig

641-328-4163

fivestarsprayfoam@gmail.com

NEW CONSTRUCTION, REMODELS, POLE BARNS
CRAWL SPACES, ATTICS & MORE

Free Estimates • Fully Insured
WWW.5STARSPRAYFOAM.COM

DES MOINES DIESEL INC

Servicing All Your Diesel Fuel Injection Needs

Pumps, Nozzles & Turbos

Ag & Truck Performance Parts

1-800-475-6086 • 515-265-7318
3211 Delaware Ave Des Moines, IA 50313
1 Blk E. of the ADM Soybean Plant

Dream It. Build It. Live It.

Midwest Realty Group

Creating Real Value in Real Estate

Custom Modular Home Builder

319.759.2862 • midwestrealtygroupinc.com

LANCASTER LUMBER, INC

WINTER SALE

\$9,995

30x36-10' Post Frame Building Includes:

- 1-16'x8' Overhead Door
- 1-36" Steel Walk Door
- 2 - 3/0x3/0 Windows
- Regular Price \$11,995

Price is for erected building located within 50 miles of Lancaster, MO.
Many other sizes and options are available.
Pictured Building differs in Size and Options
Sales Tax Not Included

Lancaster, MO

www.lancasterlumber.com **800-424-5071**

AG RELATED

FOR SALE: JD 7200 Max Emerge Planter 6R 30 Inch, Non-Vacuum, \$5,500; JD 820 MoCo, \$1,800. 319-470-9644 or 319-878-3766 4-12

FOR SALE: TW-20 Ford, 7800 Hrs, New Clutch, 2 New Firestone Radials, 9 Bolt Duals w/Good Tires, New Interior, New Paint, Nice Good Running Tractor, \$15,000. Loren Martin. 660-341-1854 4-12

FOR SALE: 116 Square Bales of 3rd Cutting Alfalfa Hay, Has a Little Fox Tail in it, \$6.50/Bale. Delivered in the Ottumwa-Bloomfield, IA Area. 641-799-0360 4-5

FOR SALE: 1-28 Ft Drive Over Implement Trailer; IH 6 Row Flail Shredder; 2 Hiniker NH3 Coolers w/ Monitor. 319-759-6696 4-19

FOR SALE: Wilrich 3400 Field Cultivator, About 38 Ft Double Wings on Each Side, \$4,500 or Best Offer. 641-799-0200 4-12

FOR SALE: Krause Soil Finisher, 27 Ft, Model 6300 w/Rolling Baskets. 641-777-1931 4-12

30 Trikes In Stock Ready To Go and Building More

We Install Trike Kits on Hondas, Yamahas, Harleys, Triumphs, Victories, Suzukis & Kawasakis! Get Your Trike Kits Ordered Today!

4 Weeks For Delivery! We Do California Side Car, FBI, Champion, Lehman, Frankenstein, Mystery Design, Motor Trike Kits!

641-774-7494 • Chariton, IA

www.cc-cycle.com - Click on Trike Gallery!

Prices Starting @ \$9,995 For Complete Units!

Kit Prices Starting @ \$5,295

We Can Finance Kits!

Zero Down Financing With Interest As Low As 2.49% WAC

TJ's Auto

24345 Dewey Road
Centerville, Iowa
641-437-1064
641-895-0319

TJ'S PRICE \$13,900

2016 Chevy Malibu LT Turbo, 1.5 4 Cyl, Loaded, Heated Leather, Sunroof, Bose Stereo, 23K

TJ'S PRICE \$8,995

2016 Chevy Impala LTZ 3.6 V6, Loaded, Heated Leather, Sunroof, 78K Miles

TJ'S PRICE \$8,995

2015 Dodge Dart GT 2.4, 4 Cyl, Auto, Heated Leather, Loaded, Sunroof, Factory Remote Start, 45K Miles

TJ'S PRICE \$9,995

2013 Chevy Equinox LTZ 3.6 6 Cyl, Auto, AWD, Leather, 113K Miles

TJ'S PRICE \$9,995

2007 Ram 2500 SLT Quad Cab, 5.7 Hemi, Auto, 4x4, Loaded, Cloth, Hwy Miles, Clean Title, 160K

COMING SOON!

2016 Jeep Patriot 75K

www.tjsautoia.com

\$\$\$ MOBILE HOME SAVINGS

That Is What We Are About For The Last 36 Years - New, Used, All Sizes

573-657-2176

www.amegamobilehomes.com

Woodworth Trailer Sales

660-646-5070

5898 Hwy 190, Chillicothe, MO 64601
Come See Us For All Your Trailer Needs

Grain & Cornhead Movers
2, 4, & 6 Wheel Style

Hydraulic Dump

Hydraulic Brake Lock

Hay Boss Hay Trailers
Big Or Small - We Have Them All
Hydraulic Self Dumping, Also Hydraulic Pickup Bed Spikes, 3 Pt Hitch Hay Unroller
All Kinds of Hay Equipment

No one in SE Iowa has a better selection of quality used mowers!! We are whole selling last years trades! over 75 mowers in stock, financing available

\$25500.
Just 2796hrs!
New Holland
TS100 Bush
Hog QT loader

\$5495.
DIESEL, AWS
Tag 0390

\$3700.
Dif lock, hyd lift

\$7200.
Just 220 Hrs

\$8995. Must Go!

X495 Diesel
Diesel, dif lock,
PS, All wheel steer

JD X485
fuel injected,
62" deck, AWS!

JD X729 4WD,
4wheel steer!
super clean!

72" deck
Just 550hrs
Hydraulic lift

60months 0% APR
\$39995.

\$11995.

2014 **\$22995.**

\$24500.
3900 hrs

NEW 2018 5065E,
Power reverser
w/loader

IH 1979 1486D
6300hrs, 146 HP,
540/1000

Bobcat T450
Cab heat and air
NEW tracks sprockets!

Lull 644B-37
JD diesel
New Front tires

\$8995

74hrs
\$11995.
\$9999. 2018!

just in
\$24995.

\$7495. **\$6995.**
DIESEL

JD 825I fuel
injected mags,
roof hyd dump

JD825E, 2018
just 54HRS!
deluxe cargo box

2014 4520
Just 454hrs
Hydro 4wd

2013 HPX
gator Diesel,
Hydraulic dump

568hrs **\$13500**
JD 450 tiller

NEW Loader!
\$13500.

\$13900. **\$14500.**

\$14995.

JD 2520, 62
drive over
deck, jd tiller

JD 2320 Hydro
331hrs 60" drive over
deck, extras

JD 1025R Hydro
220 hrs 60" drive
over deck,

JD 2025R Hydro
115 hrs NEW 62"
drive over deck,

\$10995.

\$9999.

low hours!
\$5500.

\$8995.

2006 Toyota
FGU25
triple, side shift
low hours

Toyota 6FGU30
6k, 189"triple
new paint, tires

Master Craft
405-5 side shaft
Ford diesel
4000lb.

Nicest around
low acres
Land Pride 14'
AFM4214
CV pto

T.H.E. COMPANY
TOM HASSENFRITZ EQUIPMENT

Just 6777 hrs
\$19500.

JD 4430
like new tires
Good paint &
interior

1300 W WASHINGTON
MT PLEASANT, IOWA
WWW.THE-CO.COM

(800) 634-4885



- Specializing In Pole Shed Packages
- New Houses & Garages
- Re-roofing w/ Metal Or Shingles

Quality Comes First & Very Competitive!



641-898-2226

SCHWARTZ CONSTRUCTION

HAWKEYE TRADER
Delivery Driver Wanted

- * Muscatine - Washington Area
- * Waterloo - Cedar Falls Area

Earn Good Pay For A Few Hours of Delivery Weekly!
Must Have A Reliable Vehicle!
Must Be Very Dependable!
Good Driving Record Required!

Call: 641-675-3971
For More Information



WANTED
Standing Timber
Buying Walnut, Oak and Maple
20 Years In The Business
I Pay Before I Cut
RJ Lumber LLC • Raymond Yutzky
VM: 641-722-3348

Post & Pole Frame Buildings

Horizon BUILDINGS

Specializing in:
Post Frame Buildings
(Up to 100' Wide Clear Span)
Agricultural • Commercial
Residential • Equine
Heat Formed Metal Roofing & Siding
With 50 Year Warranty

Quality Workmanship
Best Quality Material

Everlast Roofing, Inc.
2 Miles N. of Drakesville on pavement
888-371-4710 • 641-722-3505
17549 Husky Trail Drakesville, IA 52552

CONLEY
SPRAY FOAM
INSULATION

Open/Closed Cell Spray Foam
Fully Insured
Check Us Out On Facebook
Been In Business Since 2008
641-777-0449 • 641-799-0398
www.ConleySprayFoam.com

JAMESPORT BUILDERS
660-684-6931
POST FRAME BUILDINGS

Free Estimates

Machine Sheds • Horse Barns • Garages
WE ALSO DO METAL ROOFS, SPRAY FOAM INSULATION
(OPEN & CLOSED CELL) & CELLULOSE INSULATION
We Have: House Plans, Dirt Work & Concrete Available
Hours: Mon-Fri 8 AM - 5 PM • Sat By Appointment Only
32137 State Hwy 6 • Jamesport, MO 64648
"Serving Southern Iowa"

SULLIVAN AUCTIONEERS, LLC

THE INDUSTRY'S LEADING AG AUCTION FIRM!



DAN SULLIVAN



JOE SULLIVAN



JIM SULLIVAN

Specializing in Land and Equipment!

TOLL FREE: 844-847-2161
www.sullivanauctioneers.com

FOR SALE: 60 Inch Kubota BX Belly Mower, 3 Blades, \$750 OBO. Ask for Mike.
 319-679-2420 4-5

FOR SALE: JD 455 Diesel Garden Tractor w/54 Inch Deck, All Wheel Steer, Hydro, Hydraulic, Recent Service at JD, \$3,950.
 641-572-0061 4-5

FOR SALE: 175 Bushel Seed Tender Gravity Wagon w/Hydraulic 6 Inch Brush Auger, 16 Ft Long.
 319-330-3694 4-12

FOR SALE: Case IH 215 Tractor, 2865 Hrs With or Without Loader; Case IH 4800 32 Ft Field Cultivator.
 660-748-5997 4-5

FOR SALE: 1st Cutting of 2018 Grass/Hay Mix, \$100 a Bale.
 641-682-2518 4-12

FOR SALE: JD 4850, MFD, Farmer Owned, A1 Condition, Field Ready.
 641-208-0424 4-12

HUFF'S POLLED HERFORD BULLS FOR SALE



These bulls represent the best genetics of the breed!

Raising Hereford Cattle Since 1915
 • Sires are selected for calving ease, maternal traits, calm dispositions, & rapid growth. Superior EPD's!!
 • Raised on a diet that encourages growth not fat, they are ready to work!
 • Docile & easy to handle - the disposition you always wanted.

HUFF'S POLLED HERFORDS

26574 STATE RT. M • RUTLEDGE, MO 63563

LeRoy Huff, Home: 660-883-5684 or Cell: 660-341-6392

Sean Huff, Home: 660-883-5383 or Cell: 417-499-3639 or 660-988-2937

GIVE US A CALL & VISIT OUR FARM TO SEE FOR YOURSELF THE QUALITY DESCRIBED!

Where Quality Comes First
 Are You Thinking About A Building? Bring Your Size And We'll Give You A FREE Price Quote!
WE WILL ENGINEER YOUR TRUSSES TO YOUR SPECS

BUILDING PACKAGES (TAXES INCLUDED) SERVING THE TRI-STATE AREA SINCE 1992

Call For Pricing On Building Packages!

- WE WILL DELIVER - FREE ESTIMATES ON ALL BUILDINGS WE MANUFACTURE STEEL ROOFING, SIDING AND TRIM, CUT TO THE INCH.



BUY DIRECT AND SAVE!

4 MILES SE OF REVERE, MO OR 6 MILES NW OF WAYLAND ON C. 26758 HWY C., ALEXANDRIA, MO 63430

VOICE MAIL: 641-664-0209

WAGLER METALS

Missouri Warehouse

MON-FRI 7AM-5PM SAT 7AM-2PM

Darnell's Bee Farm

Honey Bees • Bees Wax Queen Bees • Beehives Bee Keeping Supplies • NUCS And Much More!
 Glenwood, MO • 573-231-2380

Border Collies
 Ready to Go, Born in November, Up to Date on Shots & Worming, Parents Are Working Dogs on the Farm
Asking \$250 319-288-0975

FOR SALE: LP Tank on Wheels, \$650; Wobble Box-Gear Box for John Deere 1209 MoCo, \$250; 2-6 Bolt Vermeer Axles w/Brakes, \$200 Pair.
 641-799-0200 4-5

FOR SALE: IH 16 Inch 4 Botton Plow, Semi Mount, Steerable, Ripple Coulters; Saddle Tanks, 2-250 Gal Tanks, 1 Brackets - Mounts Side of Tractor.
 641-675-3409 4-12

FOR SALE: JD 980 25 Ft Field Cultivator, Good Shape, \$7,500 OBO.
 641-208-0156 4-5

FOR SALE: JD 4650, MFD, Farmer Owned, Sharp Tractor, Field Ready.
 641-208-0424 4-12

CATTLEMEN: New Heavy Iron Corral Panels, \$60, Free Replacement If Panel Gets Damaged.
 816-507-3116 Or 816-898-0234 4-19

FOR SALE: JD 6R 7000 Planter, Liquid Fertilizer, No-Till, Coulters, Field Ready.
 641-208-0424 4-12

Metal Roofing

Buy Direct

AW Metal LLC
 Metal Roofing Headquarters

641-664-3990
www.awmetal.net

MAST VINYL WINDOWS

Thermo-Pro Windows
Custom Size Is Our Specialty
 Professional Installation Available
FREE ESTIMATES
 22172 Hwy. 63
 Bloomfield, IA 52537
800-206-9949

HAY FOR SALE

Big Square Bales Of Alfalfa Hay

660-216-0938

OVER 24 17 Used Side By Sides & UTV's From Kawasaki, Polaris, Can Am, Yamaha, John Deere & Honda

NO DOC FEES! Starting As Low As **\$2,895**

C&C Cycle
 Chariton, IA • 888-475-2243
www.cc-cycle.com

ATTENTION LAND OWNERS

Buying Standing Timber Owner/Operator Of Sawmill Buy/Cut Logs

Certified • Bonded • Insured
Memphis, MO

660-341-4921
Or 660-465-2925

NOTICE!
THE HAWKEYE TRADER
 reserves the right to refuse any ad or to edit any portion of an ad at any time. **The Hawkeye Trader** will give credit for only one week of incorrect ad copy. If there is an error in the first week's publication, call our office and an adjustment will be made. In case of error your ad may be run in the following week's edition at no charge or you may request a refund or credit on your bill. **The Hawkeye Trader** does not accept liability for any loss or damage caused by an error or inaccuracy in the printing of an ad beyond the amount paid for the space occupied by the advertisement in which the error occurred. **The Hawkeye Trader** cannot guarantee specific page or location placement of any ad. There will be a \$10 check return fee for any NSF check. We are not responsible for illegible copy received in mail. If your item in the paper is sold before your ad runs out or after we receive it we will issue you credit for further advertising. Any pictures for display ads received become the property of **The HawkeyeTrader** unless accompanied with a self addressed stamped envelope.

USED AMERICAN FAMILY DOUBLE-WIDE

These Do Not Last!
 Excellent Condition, Call Quick!
573-499-9993
 www.columbiadiscountshomes.net

Cut-to-Length Metal for Roofing Siding & Trim

Buy Direct
Snap Lock Standing Seam Roofing Rolled On Site
Interior Liner Steel



AFFORDABLE METAL MANUFACTURING
563-264-8212

303 Cleveland St Muscatine, IA 52761
 Email: amminfo7@gmail.com
 www.affordablemetalmfg.com

Where Quality and Affordability Meet

Harbison Brush Mowing
 Brush Mowing • CRP Fields • Timber • Trails
 Pasture Cleanup • Tree Shear • Fence Rows

Jeremy Harbison
 Cell: 319-461-0376
 Home: 319-694-2300

HARBISON FENCING
 "For All Your Fencing Needs"
 Barbwire • Woven Wire
 Silt Fence • Vinyl Fencing
 Hi Tensile
 319-694-2300 - Home
 319-461-0376 - Cell

CLASSIFIED COUPON
 Use the Power of Your Traders for Regional Classified Results!
 Clip this coupon to run a Classified Ad for **\$8.75** for one week.
 1 Classified Ad for two weeks or 2 Classified Ads for one week for **\$17.00**.
 Picture ads are not included with coupon, call for pricing.
 Each ad must be 20 words or less. additional 20¢ per word over 20 words

AD NO. 1: (20 Words Or Less)

2009 Gold Wing GL 1800
 California Side Car
 Trike Kit, Tourpac
 Rack, Running
 Boards, 39K Miles

NO DOC FEES! **\$22,995**

C&C Cycle
 Chariton, IA • 888-475-2243
 www.cc-cycle.com

WANT TO BUY:
\$2 1/2 \$5, \$10 & \$20 Gold Coins
Dimes, Quarters & Half Dollars
Dated Before 1964
Sterling Silverware • \$500 & \$1000 Bills
10 Oz. Silver Bars • Large Coin Collections
 Pay Top Cash Since 1971! Will Travel To Your Home Or Bank To Buy!
Max Hagen - Wallis Company
Cedar Rapids, IA • 319-396-7760
 I Am Easy To Talk To! Call NOW!

AD NO. 2: (20 Words Or Less)

FOR SALE: IH 1250 Grinder Mixer w/Digital Scales, Good Condition, \$4,500; Indoor & Outdoor Hog Feeders, \$40-\$200. 641-722-3300 4-5

WINCO GENERATORS: New & Used. Wes Sebetka. 641-990-1094 TFN

AUTOMOTIVE

FOR SALE: New 3 Pt Tillers, Heavy Duty, Gear Driven, 7 Ft to 12 Ft, Starting at \$2,150. 660-874-4455 1-3

FOR SALE: Great 4x4 Farm Truck, 2003 Dodge 4 Dr 24V Cummins Motor, Near New Tires, New Turbo, Rollover Ball, No Rust, Great Interior, Asking \$9,250. 641-452-6656 4-12

FOR SALE: Kuhn 7 Ft Disk Mower in Good Condition, \$1,950 or 3 Pt Sickle Mower on Trade. 641-572-0061 4-5

FOR SALE: GM 6.2 Diesel Motor, Only 60K Miles, Runs Good. 641-208-0424 4-12

FOR SALE
5' x 6' ALFALFA/GRASS
ROUND BALES
\$100 EACH
STORED INSIDE
641-675-3423

Triple Your Classified Ad's Power By Running It In The Traders
The HAWKEYE TRADER, SHOW ME TRADER & MID-MO TRADER!
 WHEN YOU SELECT ALL THREE TRADERS, YOUR AD WILL BE READ IN OVER 170 COUNTIES IN 5 STATES & ONLINE!

HAWKEYE TRADER ONLY: 1 Ad For One Week **\$8.75** (84 Counties)

HAWKEYE TRADER ONLY: 1 Ad For Two Weeks **\$17.00** Or 2 Ads For One Week **\$17.00** (84 Counties)

BOTH HAWKEYE & SHOW ME TRADER: 1 Ad For One Week **\$17.00** or 2 Ads For One Week **\$32.00** (150 Counties)

BOTH HAWKEYE & MID MO TRADER: 1 Ad For One Week **\$17.00** or 2 Ads For One Week **\$32.00** (106 Counties)

BEST VALUE: HAWKEYE, SHOW ME & MID MO TRADER: 1 Ad For One Week **\$25.00** (170 Counties)

BEST VALUE: HAWKEYE, SHOW ME & MID MO TRADER: 2 Ads For One Week **\$47.00** (170 Counties)

To Receive This Rate, Coupon Must Be Mailed In With your Payment
 Or Use Our Website @ www.hawkeyetrader.com For More Savings Options
HAWKEYE TRADER, P.O. Box 96
Pulaski, IA 52584

TL RANCH
Montecello, MO
 Home of Elite Angus Genetics
SINCE 1963
ANGUS BULLS FOR SALE

Yearlings - \$2500
 Sept., Oct., Nov., 2017 - \$3500
 Full 2 Year Olds - \$4500

Most Are A.I., 75% Are Heifer Bulls

All Will Be Semen Checked, Full
 Vaccinations Including Wart Vaccine,
 Wormed, And Gentle.
 These Are Big Framed. Latest Genetics.

Birth Weight, Weaning Weight,
 Yearling Weight Available.
 Not Picked Over.

Terry **Marilyn**
573-470-0846 **573-470-0847**

Twisted X ARIAT
 Danner RED WING SHOES

**COWBOY BOOTS,
 WORK BOOTS,
 AND ACCESSORIES!
 MENS & WOMENS STYLES!**

Graber's
 COUNTRY STORE
 2 miles south & 1 mile east of Drakeville
 (641) 664-3163

FOR SALE: 2010 Chrysler Town & Country Touring, Excellent Shape, Drives Nice, Elderly Driven, Loaded w/Good Tires, Braun Handicap Rear Lift. 319-850-2384 4-12

FOR SALE: 2003 Dodge Cummins Diesel, Never Wrecked, Little Rust Over Rear Wheels, 6 Spd, \$5,000 of Extras Added When New, \$10,500 OBO. 507-625-7788 4-19

FOR SALE: 2004 Dodge 3500, Dual Rear Wheel, Reg Cab, Steel Flatbed, 6 Spd Manual, 4WD, \$9,500 OBO. 319-470-3255 4-5

FOR SALE: 1995 Peterbilt & 1995 Wilson Grain Trailer, Will Sell Separate. 641-895-8174 4-5

FOR SALE: Topper, Fits F250 Shortbox 1999-Present, Fiberglass, Black, 2 Sliding Windows, in Good Condition, \$950 OBO. 319-470-3255 4-5

FOR SALE: 2002 Ford Sport Trac, 4x4, 4.0 6 Cyl, 181,000 Miles, Good Condition, \$3,000 OBO. 641-777-8521 4-5

Golden Grain Bins
Spring Discount

Stiffened Grain Bins Floors W/12" Supp. & Flashing

30'x24'	15,855 Bu.	\$10,703	18'	\$1,110	36'	\$4,423
36'x21'	20,675 Bu.	\$11,862	27'	\$2,535	42'	\$6,026
45'x24'	37,350 Bu.	\$19,302	30'	\$3,103	45'	\$6,809

GMLS Industries, Inc.
PH: 660-699-2179
Or 888-983-2136
www.gmlsindustries.com

WD 63 PIPE & STEEL
QUEEN CITY, MO
POND PIPES • CULVERTS
PIPE FROM 3/4" to 120" • POST & CONTINUOUS PANELS
INSTALLATION
FLAT BAR • ANGLE • CHANNEL • I-BEAMS
SQUARE & RECTANGLE TUBING
660-216-9061 • 660-341-4753

LAN-DOW BUILDINGS
 "We Build to Suit Your Needs"
 "Custom Built"
 Pole Barns
 Garages
 Utility Buildings

LAN * DOW

"H" Don or Dick Middleton
Memphis Lumber Co.
1-800-337-5858
Phone: 660-465-8595
Fax: 660-465-8596

CLEARY BUILDING CORP. Custom Designed & Built to Last
Commercial • Suburban • Farm • Home • Horse

Cleary prides itself on high-quality service and customer satisfaction... **SIMPLY THE RIGHT CHOICE!**

FEATURING: **FABRAL**

Contact us TODAY and ask about current BUILDING SPECIALS in your area!

DE SOTO, IA • 515-834-2372
FAIRFIELD, IA • 641-472-1525
TIPTON, IA • 563-886-2903

800-373-5550 • ClearyBuilding.com

2012 F350 XL

\$21,500 OBO

4x4, Ext Cab, Auto, Gas, 64K Miles, Routine Maintenance, Had an 8' Utility Bed on It. Cleanest 2012 Around, Tires Are 20%.

To View, Contact Trent Gregory Weekdays 8-5 at **641-664-2074**

citizens mutual

16 USED STREET GLIDES
\$0 Down Financing W/Qualified Credit Get Your Dream Bike "NOW"

NO DOC FEES! Prices Starting @ **\$10,000**

C&C Cycle
Chariton, IA • 888-475-2243
www.cc-cycle.com



FOR SALE: 2006 Dodge Caravan, Driven Regularly, Runs Good, Good Tires & Brakes, 160,838 Miles, Some Rust, \$2,500; 2007 Dodge Caravan, Good Tires & Brakes, Very Little Rust, 110,010 Miles, Everything Works, \$5,000 Or Offer.
515-669-2449 ETFN



Keep your critters warm this winter with a NEW BARN!

- Metal Roofing
- Crews available
- FREE estimates!
- Call today!

Stocking framing nails by the box or pallet. Call for pricing!

WAGLER METALS LLC

19049 Ice Ave., Bloomfield, IA • 641-722-3692

FOOD PLOT SEED & SEEDING

IOWA'S LONGEST RUNNING GROWER & SUPPLIER OF CRP SEED

11009 542ND ST. LUCAS, IA 50151
800-582-2788 Or 641-766-6790
Fax: 641-766-6795
john@prairieseedsfarms.com
www.prairieseedsfarms.com

OSENBAUGH'S PRAIRIE SEED FARMS

the cover crop, CRP, and prairie experts

ATTN TRUCK OWNERS: Rhino Linings Offers You The Worlds Number One Sprayed In Truck Bedliner. Also Works On Livestock Tanks, Creep Feeders, Horse Trailers, Etc. Call For An Appointment & More Info.
641-799-5672 TFN

Save Some Trees!
Read The Paper Online!
www.hawkeyetrader.com

\$74,500

2005 Monaco Diplomat Model 40PDQ 40 Ft Coach

It Has a Cummins Diesel, Allison Automatic Transmission, 32,600 Miles, 4 Slides, 2 Roof Air Units, Rear Master Bedroom, Washer/Dryer, 8000 Onan Quiet Diesel Generator, 4 New Rear Tires, 6 Brand New Batteries & Has Always Been Stored Inside. This is a Great Coach.
Please Call Mike Wagler on My Cell at **319-430-1592**

Carroll Construction Supply

1111 Wildwood Drive OTTUMWA, IA 52501
641-683-1888
carrollsupply.com

- Rental Equipment & Wall Forms
- Concrete Equipment New & Used
- Insulated Concrete Forms
- Rebar & Fabrication
- Foundation Water Proofing Products
- Culverts
- Stabilization Fabric
- Decorative Concrete Supplies

By Butterfield Color

We Are A DeWalt Dealer **Call For A Location Near You!**

Find us on: facebook.
@ Carroll Distributing & Construction Supply, Inc.

Fast • Dependable • Reasonable - From Minor Maintenance to Major Repairs

Yoder's KOUNTRY KORNER Quilts & Gifts

Cambridge Collection
in your choice of wood, stain color and hardware. This collection offers: bed, dresser, nightstand, lingerie chest, armoire, blanket chest, tv night chest and mirror.

21050 ICE AVENUE • BLOOMFIELD, IA
641-664-2545 V.M. • MON.-SAT. 9-5

KOUNTRY KORNER Bakery

Bakery Hours: **Fri. & Sat. 9 AM-5 PM**
21050 Ice Avenue ~ Bloomfield, Iowa 52537
641-664-1747 v.m.

YODER Lumber

Imagine A Lifetime Of Beauty With The Strength Of Steel.

As The Original Stone Coated Steel Roofing System, The DECRA Product Line Represents A Perfect Blending of Over 50 Years of Research & Practical Experience. Offering The Ultimate In Performance & Engineering Design Is What DECRA Roofing Systems Are All About.

SHINGLE XD DECRA SHAKER XD
Stone Coated Steel Roofing Systems

Full Line Of Building Materials

Paslode Guns & Nails

Bring Your Plans In For A FREE ESTIMATE

Andersen WINDOWS • DOORS

17893 212th Street • Bloomfield, IA 52537
641-722-3605 • Mon. - Fri. 7 AM - 5 PM

CENTRAL IOWA FEATHERLITE TRAILER SALES



Safe. Secure. Smart.

P.O. Box 100, Hwy 65 • Bondurant, Iowa 50035



Model 8127 Livestock Trailer
Over 30 New And Used Livestock Trailers In Stock



Featherlite Model 3110
17'-20' Lengths.
New And Used In Stock



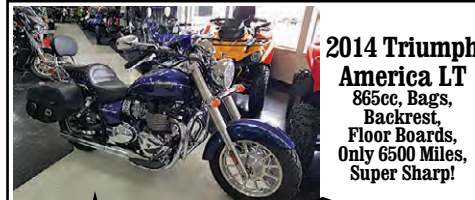
Bravo Trailers
Steel Frame Aluminum Skin Enclosed Trailer.
5'x8' to 8'6"x24' In Stock



2018 CM Trailers Are Starting To Arrive!
This 6'x16' Livestock Trailer
Starting At - \$5,495

1-800-240-8110

Check Out Our Website for Current Used Inventory
CLICK HERE: www.centraliowafeatherlite.com
PHONE: 515-967-8735 • FAX: 515-967-8736



2014 Triumph America LT
86cc, Bags, Backrest, Floor Boards, Only 6500 Miles, Super Sharp!

NO DOC FEES! **\$6,695**

C&C Cycle
Chariton, IA • 888-475-2243

www.cc-cycle.com

**NEW NEW NEW
DISPLAY HOUSE!!!**

Call Marla to Hear What is New Inside
573-657-7040
www.chateauhomes.net

WE FILL SEMEN TANKS!!:
All Beef Semen Sales, Nitrogen Sales, AI Supplies. Unlimited Genetics, Inc, Est 2001. Call Ryan.
641-226-1884 3-20

ANGUS BULLS FOR SALE: Good Selection of Yearlings & 18 Month Olds, Performance Data & EPD's. Coon Angus, Bethel, MO.
660-342-2705
or 660-284-6473 4-26

FOR SALE: Hereford Bulls, Yearling & 2 Yr Old Bulls, Pictures & Videos Available, Call or Text Brent Petersen.
563-357-9849 4-19

RED ANGUS YEARLING BULLS FOR SALE: A.I. Sired From the Breeds Top Bulls, \$1,500.
641-895-4526 4-12

FOR SALE: Purebred Polled Shorthorn Bulls. AAA Shorthorns, Hwy 81 Between Kahoka, MO & Farmington, IA.
319-572-2322 4-19

FOR SALE: 4 Yr Old Black Bull, Good on Heifers, Good Disposition, \$2,000.
641-777-8420 4-12

MASTER BUILDERS

Post Frame Buildings



24 x 30 x 10 2 Overhead Doors 1 Walk Door Concrete Floors **\$14,600**
30 x 40 x 10 2 10x8 Overhead Doors 1 Walk Door Concrete Floors **\$17,200**

All Sizes On Sale
Price Includes All Tax and Labor
Call (641)295-4970 • (641)295-4467
Customers are responsible for all permits.



Order Your Fish Today

NOW TAKING ORDERS FOR ALL COOL WATER SPECIES:
• WALLEYE
• YELLOW PERCH
• SMALL MOUTH BASS
• MUSKIE
• NORTHERN PIKE

HARRISON FISHERY
POND & LAKE STOCKING

Channel Catfish	Grass Carp
Bluegill • Hybrid	Redear
Fathead Minnow	Largemouth Bass
Black Crappie	Koi
Walleye	Yellow Perch

www.harrisonfishery.com

Contact Us For Price & Delivery

660-423-5482 • info@harrisonfishery.com

HOT DEALS for cold weather



10% OFF* GALVANIZED GATES

True heavy-duty gates with added vertical beams for support and wire mesh to keep livestock in

*Deal good through January 31



FIGHT STRONG FOR CATTLE

Helps overcome:
• Production stress
• Transportation and handling
• Poor appetite
• Suppressed immune system



TANK DE-ICERS

Designed for multiple uses around the home and farm
• Constructed of cast aluminum for durability and safety
• Thermostatically-controlled to automatically keep water from freezing

Hometown
ANIMAL HEALTH

660.465.2967 • hometownanimalhealth.com

18743 US Hwy 136 • Memphis, MO 63555
On Highway 136 west of Memphis

NUTRITION • MEDICAL • PET • FARM • APPAREL

NEMO FEED
AUTHORIZED DEALER OF NEMO FEED.





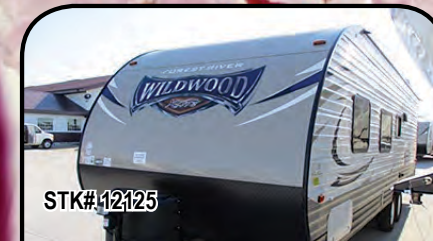
STK# 12697
'18 FOREST RIVER WILDWOOD 28DBUD
LIST \$26,451
AD PRICE \$18,995



STK# 12697
'19 FOREST RIVER WILDWOOD 28DBLE
LIST \$25,409
AD PRICE \$18,995



STK# 12594
'19 FOREST RIVER WILDWOOD 27RKSS
LIST \$29,409
AD PRICE \$22,529



STK# 12125
'18 FOREST RIVER WILDWOOD XLITE 261BHL
LIST \$20,452
AD PRICE \$13,995



STK# 12692
'14 OPEN RANGE LIGHT LF319RLS
Triple Slide
\$24,995



STK# 12731
'13 HEARTLAND GREYSTONE 32RES
Triple Slide
\$25,995



STK# 12667
'08 KEYSTONE SPRINTER COOPER CANYON 339FWTSL
Triple Slide
\$15,900



STK# 12752
'07 FLEETWOOD WILDERNESS SCOUT 245RLS
Clean!
\$8,995



STK# 12442
'18 FOREST RIVER WILDWOOD XLITE 241QBXL
LIST \$20,803
AD PRICE \$14,995



STK# 12470
'19 FOREST RIVER WILDWOOD XLITE 233RBXL
LIST \$24,267
AD PRICE \$15,995



STK# 12608
'19 FOREST RIVER WILDWOOD XLITE 171RBXL
LIST \$20,566
AD PRICE \$16,995



STK# 12473
'19 KEYSTONE HIDEOUT 192LHS
LIST \$20,388
AD PRICE \$14,995



STK# 12815
'06 CROSSROADS PARADISE POINTE PF34BH
Bunks!
\$13,900



STK# 12693
'06 KEYSTONE SPRINTER COOPER CANYON 252FWRLS
SUPER CLEAN!
\$9,995



STK# 12828
'05 JAYCO DESIGNER 31RLS
Rear Living
\$12,900



STK# 12764
'15 FOREST RIVER PATRIOT 26RR
Toy Hauler
\$16,900



STK# 12590
'19 KEYSTONE HIDEOUT 242LHS
LIST \$24,512
AD PRICE \$18,995



STK# 12534
'19 KEYSTONE HIDEOUT 28BHS
LIST \$29,748
AD PRICE \$21,995



STK# 12414
'18 KEYSTONE HIDEOUT 28RBS
LIST \$29,380
AD PRICE \$21,410



STK# 12028
'19 KEYSTONE PREMIER ULTRA LITE 19FBPR
LIST \$28,104
AD PRICE \$20,780



STK# 12786
'12 KEYSTONE FUZION 300
Toy Hauler With Generator
\$26,900



STK# 12743
'18 KEYSTONE PREMIER ULTRA LITE 24RKPR
Opposing Slides!
\$25,900



STK# 12417
'17 DUTCHMAN ASPEN
Bunks!
\$13,900



STK# 12615
'17 KEYSTONE SUMMERLAND 2890BH
Quad Bunks!
\$18,900



STK# 12481
'19 KEYSTONE RV BULLET CROSSFIRE 1650EX
LIST \$20,820
AD PRICE \$15,995



STK# 12320
'18 KEYSTONE COUGAR 27RLS
LIST \$44,916
AD PRICE \$35,392



STK# 12313
'18 FOREST RIVER XLR NITRO 36T15
LIST \$98,478
AD PRICE \$59,995



STK# 12328
'18 FOREST RIVER XLR NITRO 36VL5
LIST \$96,326
AD PRICE \$59,995



STK# 12836
'16 STARCRAFT LAUNCH ULTRA LITE 26BHS
Light Weight Bunkhouse!
\$16,900



STK# 12834
'13 FOREST RIVER R POD RP177
Only 2400 Lbs!
\$12,900



STK# 12822
'12 FOREST RIVER SALEM 30QBSS
Quad Bunks!
\$13,900



STK# 12491
'19 KEYSTONE RAPTOR 425T5
LIST \$108,148
AD PRICE \$75,940

800-246-5497



14270 SYCAMORE RD. OTTUMWA, IA 52501

WWW.BOWLINGRVs.COM

BOWLING RVs

YOUR SOURCE FOR ADVENTURE



SPECIALIZING IN SELLING HUNTING PROPERTIES AND FARM LAND

WHITETAILPROPERTIES.COM

WHITETAIL PROPERTIES REAL ESTATE

HUNTING | RANCH | FARM | TIMBER

GABE ADAIR
515-971-8182

gabe.adair@whitetailproperties.com
Licensed in IA



RICH BAUGH
319-750-9273

rich.baugh@whitetailproperties.com
Licensed in IA, IL, MO

APPANOOSE CO, IA - 127 Acres, Big timber tract with high-quality bottom ground tillable and giant whitetails, established food plots, \$450,000

APPANOOSE CO, IA - 104 Acres, Trail access throughout the farm, Great building site off the paved highway, Big timber tract, 2 ponds, \$350,000

CLARKE CO, IA - 360 Acres, Great investment, 260 FSA Tillable acres, 2 Ponds, Small creek, Loaded with pheasant and quail - \$1,350,000

CLARKE CO, IA - 170 Acres, Recreational farm, Tillable acres, Mature oaks, 2 rock quarry ponds loaded with fish, Brush and cedars - \$678,300

DECATUR CO, IA - 30 Acres, Great soils, Heavily managed area, River frontage, Highway frontage, Large tillable fields - \$120,000

DECATUR CO, IA - 183 Acres, 60 acres tillable, Huge cedar thicket, Prime habitat, Low pressure managed area, \$786,900

DECATUR CO, IA - 500 Acres, Turnkey managed property, Great building site, Tillable, CRP, Food plots - **SOLD**

DECATUR CO, IA - 520 Acres, Tillable, 2 1/5 bath and 4 bedroom home, Managed for top end whitetail - **SOLD**

DECATUR CO, IA - 80 Acres, Great building sites, 63.75 CRP, Investment farm with great hunting, Pheasant and quail - **PENDING**

DECATUR CO, IA - 71 Acres, Great building site, Big oaks throughout, Tillable acres, Multi-use property - **PENDING**

DECATUR CO, IA - Acres, Tower blind on the property, Deer and turkey sign throughout the farm, Solid timber tract with River Frontage, \$95,000.

DECATUR CO, IA - 400 Acres, Nice oak timber, established food plots, great access, CRP, 7 ponds - **SOLD**

DECATUR CO, IA - 40 Acres, Hardwood, CRP, Tillable, Great Access, 2 Creeks Run - **PENDING**

LUCAS CO, IA - 360 Acres, Prime Pasture Or Hunting Farm, Three Ponds, One Fully Stocked, Three Metal Outbuilding, Great Deer and Turkey sign - **SOLD**

LUCAS CO, IA - 80 Acres, 65 acres tillable, Power & water at the road, 2 small ponds, - **PENDING**

MADISON CO, IA - 270, 13.84 CRP, Gorgeous views, 30 mins from West Des Moines, Great building sites, 200 acres of pasture, \$1,053,000

MADISON CO, IA - 161 Acres, 66 acres CRP, House, Shop and Garage, 1.75 acres pond - **SOLD**

MADISON CO, IA - 6 Acres, Great building potential, Hardwood timber, 15 minutes from Winterset, Great hunting opportunities - \$45,000

MONROE CO, IA - 218 Acres - Multiple building sites, 5 ponds, 2 are stocked, Great genetics - **SOLD**

TAYLOR CO, IA - 200 Acres, Log sided home, Steel shop, Secluded food plots, Trail system, - **PENDING**

WAYNE CO, IA - 80 Acres, Combo farm with great hunting, 45.27 acres CRP, Great cover, Multiple pond, and building sites, \$280,000

APPANOOSE CO, IA - 514 acres m/l with metal building, 200 acres alfalfa, 92.5 acres tree program/buffer strip CRP, food plots, trail system, 5 ponds and creeks, REDUCED \$1,362,100

APPANOOSE CO, IA - 160 acres m/l, 122 acres tillable, balance in timber and brush, springs, excellent hunting, CSR2 of 48.9 - **SOLD**

APPANOOSE CO, IA - 33 acres m/l with metal building living area, 12 acres open, balance in timber and brush, creek, near Centerville - **SOLD**

APPANOOSE CO, IA - 325 acres m/l with home, timber, pasture, tillable, hay, ponds and excellent hunting, near Blacksburg - **SOLD**

APPANOOSE CO, IA - 25 acres m/l with 3 bdrm/2 bath home and outbuilding, pond and food plots, located SW of Moulton - **SOLD**

DAVIS CO, IA - 132 acres m/l, 38 acres tillable, 12.7 acres CRP, balance in timber and brush, great mix of habitat, near Ottumwa - **SOLD**

HENRY CO, IA - 93 acres m/l, 4 acres hay, balance in timber and brush, 2 creeks, enrolled in Forest Reserve, near Mt. Pleasant - **SOLD**

HENRY CO, IA - 221 acres m/l, 160 acres CRP, balance in timber and brush, Skunk River frontage, good income, good access, near Mt. Pleasant, \$2850/acre

LEE CO, IA - 92 acres m/l, 34 acres tillable, balance in timber, brush and creek, pond, located near Donnellson - **SOLD**

VAN BUREN CO, IA - 160 acres m/l, 69.4 acres CRP, established food plots, excellent trail system, managed neighborhood, near Birmingham - **SOLD**

VAN BUREN CO, IA - 80 acres m/l, all timber and brush, great hunting, creek - **SOLD**

VAN BUREN CO, IA - 80 acres m/l with 3 bdrm/2 bath home, near Hillsboro, great hunting with timber, brush and ponds - **SOLD**

VAN BUREN CO, IA - 260 acres m/l with 2BR/1BA home, 58 acres tillable, balance in timber, brush, 1.5 acre pond, 4 smaller ponds, food plots, blinds, near Milton - **SOLD**

VAN BUREN CO, IA - 59 acres m/l, 29 acres tillable, balance in timber and brush, near Stockport, \$226,000

VAN BUREN CO, IA - 78 acres m/l, 29 acres tillable, balance in timber and brush, near Stockport, \$299,000

VAN BUREN CO, IA - 137 acres m/l, 43 acres tillable, balance in timber, brush and creek, near Birmingham, \$195,000

VAN BUREN CO, IA - 50 acres m/l, 25 acres tillable, balance in timber, brush and creek, near Birmingham, \$195,000

WAPELLO CO, IA - 280 acres m/l with cabin, 50 acres tillable, 2 creeks and 2 ponds, diverse property, blinds and food plots, near Ottumwa - **SOLD**

Whitetail Properties Real Estate, LLC | dba Whitetail Properties | Nebraska & North Dakota DBA Whitetail Trophy Properties Real Estate LLC, | Lic. in IL, MO, IA, KS, KY, NE & OK - Dan Perse, Broker | Lic. in AR, CO, GA, MN, ND, TN, SD & WI - Jeff Evans, Broker | Lic. in FL, OH & PA - Kirk Gilbert, Broker | Lic. in NM & TX - Joey Bellington, Broker | Lic. in IN - John Boyken, Broker | Lic. in LA, MS, GA & AL - Sybil Stewart, Broker | Lic. in TN - Chris Wakefield, Broker | Lic. in TN - Bobby Powers, Broker | Lic. in AR - Johnny Ball, Broker | Lic. in SC - Rick Elliot, Broker | Lic. in NC - Rich Baugh, Broker | Lic. in MI - Edmund Joel Nogaški, Broker



Signature
Overhead Doors and Remodeling



660-785-0248

www.signatureremodelingkv.com

Residential and Commercial Installation and Service

USED DOUBLE-WIDE

Amish Built Fortune,
Call For Info
573-249-3333
www.marktwaimobilehomes.com



Good Times Auto Swap Meet

Lathrop Antique Grounds • Lathrop, MO

April 12th & 13th, 2019

Spaces 20'x20'

Advance: \$30 At Gate \$35

Buyers \$5 Gate Fee

Open To Vendors @ 6AM • Buyers @ 7AM

Contact Rick Wilson

660-868-0759 OR Leave Message

Tycene Wilson 660-868-1861

BURKHOLDER

Full line of accessories Outfit your truck here!

Financing Options Available

2014 Ford F-350 XLT Premium Crew, 4x4, Dually, 6.7 Diesel, Auto, Only 32k Miles, Trade-in, Near New, Maroon



\$38,900

Edina 660-397-2551 51001 State Hwy 15 BurkholderTruckSales.com



\$21,900

2017 Toyota Sienna LE, 8 Pass, 3.5V6, Auto, 49k Miles, One Owner, Well Kept, Nice-Clean, Perfect Family Van, Gray



\$24,900

2017 Ford Transit 350 XLT, 15 Pass Low Roof, 3.7V6, Auto, 41k One Owner Miles, Side Entry Swing Doors, Dark Blue



\$21,900

2014 Honda Odyssey EXL, 8 Pass 3.5V6, Auto, 89k One Owner Miles, Leather, DVD, Sunroof, Nice, Gray



\$32,900

2012 Ford F-250 Lariat, 4x4, Crew 6.7 Diesel, Auto, 102k Miles, Spray-In Liner, Extra Clean, A Must See, Black



\$32,500

2011 Chevy Silverado 2500HD LTZ Z71, 4x4, Crew Cab, 6.6 Duramax, Allison, 99k Miles, Extra Well Kept Truck, Silver



\$11,500

2009 GMC Acadia SLT, AWD, 3.6V6 Auto, 125k Miles, Leather, Sunroof, DVD, Super Clean-Nice Ride, Black



\$41,900

2018 Ram 3500 Tradesman, 4x4 Reg Cab, 6.7 Cummins, Auto, 16k Miles, 9' Steel Flatbed, Factory Warranty, Gray



\$49,900

2016 Ram 5500 SLT, 4x4, Crew Cab Reading Utility Bed, 6.7 Cummins, Auto, 46k Miles, Nice, Ready for Work, White



\$34,900

2015 Ford E-350, Knapheide KUV Body, 5.4V8, Auto, 59k Miles, Alum Wheels, Near New, A Must See, White



\$33,900

2011 Ford F-350 XL, 4x4, Ext Cab 4dr, 6.7 Diesel, Auto, 81k Miles, Deluxe Service Body, Ready for Work, White

Columbia, Iowa - Your Complete Farm Store Since 1919

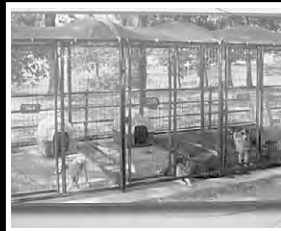
McCorkle Hardware

Where We Always Have The Best Priefert Prices!



"Built by Ranchers, Priefert for Ranchers"

S01 Squeeze Chute
One Man Operation
Easy Adjustable Floor Width
Infinite Locks
w/Lifetime Guarantee & Much More!



Professional Grade Kennels
Powder Coated Galvanized Tubing!



Round Pen
40' To 70'
Round Pen
10' To 12'



12' Premier Panels
PP12GY

Priefert
Ranch Equipment

www.mccorklehardware.com

Phone: 641-943-2315 • Mon-Fri: 7:30-5:00 • Sat: 7:30-1:00

FOR SALE: Registered Purebred Gelbvieh & Balancer Bulls, Black & Red Bulls Available, Born Dec 2017, Stout Bulls w/ Excellent Dispositions. Rolling Hills Livestock, Bloomfield, IA. 641-777-7060 TFN

HOMANN FARMS: Offering Registered Red Angus Bulls For Sale. 2 Yr Old & 14 Month Old Yearlings by AI Sires 5L Independence & PaceSetter. Come See Us in Allerton, IA. 660-748-6188 4-12

MISC
FOR SALE: Lebeda Twin Mattress, First Quality, New in Plastic, Plush Quilted Top, Several Available, 80 Inches x 37 Inches x 8 Inches, \$125. Free Delivery to Surrounding Area. Credit Cards Accepted. 319-288-1112 4-12

FOR SALE: New Derksen 12x16 Ft Metal Shed, 2 Windows, Double Door, \$3,325 ro Rent to Own \$123.15/Month. 22 Trading Place, Hwy 22E., Centralia, MO. 573-682-7003 4-5

FOR SALE: Fisher & Paykel Washer (WA 3937G1) & Dryer (DE7027G1), 3 Yrs Old, 2 Yr Manufacturer Warranty. 660-341-3740 4-5

FOR SALE: Used Rear Tine Garden Tillers, All Sizes, Many Choices, Lots of Troy-Bilts & BCS's; Also DR & Billy Goat Walk Behind Brush Mowers. 660-216-1809 5-31

BULLS FOR LEASE: Over 70 Registered Angus & Hereford To Choose From. 90 Day Lease \$900. Trucking Available At Extra Charge. Kingdom City, MO. 573-999-3197 TFN

FISH: For Pond Stocking, Delivered Free, Guaranteed. 855-374-5661 4-19

"One Man's Junk Is Another Man's Treasure!"
Sell It in the Hawkeye!

75¢
per pound
Frozen Half Bone-In Hams

89¢
per pound
Frozen Seasoned Boneless Skinless Chicken Breast

Truckload SALE!
2/\$5
36 oz.
Miracle Whip

69¢
1 pound
Fresh Baby Carrots

\$1.69
Bulk
per pound
Voortman Cookies

\$1.49
per lb.
Breaded Cod & Pollock Fish

\$1.29
16 oz.
Jimmy Dean® Ground Pork Sausage

88¢
per pound
30" box \$19.95
Bob Evans Pork Back Ribs

now is the time to buy
Seed Potatoes

88¢
10-11oz.
Breakfast Cereal

\$1.29
14 oz.
Hillshire Farms Lit'l Smokies

PELI SPECIALS!
\$2.99
per lb.
Troyer Hard Salami

PELI FRESH!
\$2.49
per pound
Troyer Virginia Ham

Spring Fabric SALE
15% OFF
per yard
60" Dress Fabrics

NEW COLORS!
\$7.99
• Infant • Kids • Adult Sizes
Crocs Type Clogs

79¢
Southeastern Mills Gravy Mixes

16 oz. \$1.75
Woebers Sandwich Pal Mustards

SALE
\$2.49
14-16 oz.
Amish Wedding Foods Amish Made Noodles

\$10.50
15 Pack
Powerade

DUTCHMAN'S STORE Division Street CANTRIL, IA (319) 397 2322
STORE HOURS • Weekdays, 8a.m. - 6 p.m. • Saturday 8a.m. - 5 p.m. • Sunday Closed

SALE PRICES April 3-9, 2019
While Supply Lasts

View our specials online - www.DutchmansStore.com

Single & Dual Wheel Beds In Stock

Authorized Dealer

3100 & 3200 In Stock

NEW! Besler Flatbeds

Ertel Custom Welding & Sales
Greentop, MO
660-949-2594
660-341-1997



D & C CUSTOM FENCING

We Sell Only the Best Products
And Can Meet All Your
Fencing & Livestock Equipment Needs

*Pipe Fencing & Pipe Corrals
Woven • Barb • Pipe Lot Fences
Installation & Delivery Available*

We Can Custom Make
Anything.....Any Size!

Donald Gordon • 641-799-4859

Safe & Durable!
Built With All New SCH 40 Prime Pipe



Fence Line Life Time Pipe Bunk
24" Tall x 20' Long
1200lbs
Cattle Don't Knock Them
Over Or Shove Them Around



Free Standing Cattle Panel
5 1/2' Tall x 20' Long
Made From New 2 7/8" Sch 40
Pipe And 1 1/4" New Pipe.
Panels Stand Up alone And
Work Well For Corrals In
Pasture. Extra Cattle Pens And
Sorting Yards. Also Have Cattle
Gate To Go On One End.



Heavy Duty Bale Feeder With Gate
Over 800 lbs.
Saves Money, Feed Up To
30% Less Hay Per year



Double Bale Feeder Heavy Duty With Basket

- Continuous Fence Panels
- Corral Panels
- Heavy Duty Easy Locking & Unlocking Gate Latches
- In Line Fence Crossing For ATV's & UTV's

Ottumwa, Iowa



\$14,900
2004 Wilson Grain Trailer
 Air Ride, 8x40 Ag Hoppers, Total Rebuild, Fall 2018, New Tarp, New Under Carriage, Good Solid Ready To Go



\$6,950
2004 Jayco Jay Feather Model 29Y, Bunk Beds, One Slide, Solar Charging System



\$2,500
18 Month Black Purebred Gelbvieh Bulls
 Low Birth Weights w/Great Growth, very Calm, Cover More Cows for the Money
641-414-1679

ART STUDIO CLEARANCE/GARAGE SALE: April 5-7, Friday 9-4, Saturday, 9-4, Sunday, 1-4. Easels, Art Supplies, Art Books, Matboard, Drawing Table, Frames, Craft Stuff, Many Original Paintings, Prints, Cards-Very Low Prices. Clothing, Women's Size 10, Men XXL. Boots, Shoes-Womens, Size 7, Men's 13. Dishes, Milk Glass Dishes, Books, Bath Vanity, Chairs, Schwinn Airdyne. Baughman-Lammert.
 307 S. 2nd St. Pulaski, IA 52584 4-5

HERVEY CONSTRUCTION: Contact Us Today Concerning Any of Your Construction Needs! We Do Remodeling, Roofing, Drywalling, Siding, Decks & More! Email us at herv.consr@gmail.com or led_ap@hotmail.com. Call or Text Today!
 641-451-5006 or 641-208-6513 4-19

LOOKING TO LIQUIDATE OR DID YOU JUST INHERIT STUFF: Let Me Help. On-Site Tag Sale Services. Personal Property And Collectible Consultation. Also Seeking Baseball Cards, Furniture, Comic Books, The Unusual, And Anything Of Value. Before Throwing Out Your Potentially Valuable Items, Contact Me. CAGA Certified. Nathan Lilley. 573-253-4159 TFN

FOR SALE: Reel Caddy, New, Mobile Unit That Can Hold 4 Rows of Spools of Automotive Wire, Electricians Wire, Rope, Cable or Anything on a Spool, Has Storage Tray for Tools, 46 Inches Tall x 24 Inches Wide x 22 Inches Deep on 8 Inch Rubber Wheels, \$235. Manson, IA. 515-570-3617 4-5

SPRAY FOAM INSULATION: We Spray Open & Closed Cell; Blow In Insulation Also Available. 660-988-6350 4-26

SCOTT HUSKEY'S HOME SERVICE!!: Insulated Skirting for Manufactured or Older Site Built Homes. Eliminates Frozen Water Lines & Cold Floors. Save 20 to 25% on Utility Costs. I Also Have an Uninsulated Heavy Duty Vinyl Skirting-Looks Great! Since 1972 573-696-3468 TFN

GENE'S SURPLUS Mon. - Fri. 8:00 - 5:30 • Sat. 8:00 - 4:00
 620 W Grand Ave Memphis, MO
660-465-7445
BIKES, TRIKES & RIDE ON TOYS ARE HERE!
 COME ON OVER! WE HAVE A DEAL FOR YOU!
 ALSO GARDEN STONES, WALLETS, PURSES & WOOD SIGNS



2010 FLHTCU Ultra Classic
 Flame Blue Pearl, ABS, Slip On Mufflers, Hwy Pegs, Custom Grips, Plus Lots Of Chrome, 46K Miles
NO DOC FEES! **\$12,995**
C&C Cycle
 Chariton, IA • 888-475-2243
www.cc-cycle.com

WANTED: Hot Shot Drivers
 Lease On With A 1-Ton Pickup And A 30'-32' Flatbed Gooseneck Trailer, Serious & Reliable Applicants Only, Home Weekends
Call 319-986-5156
 Or Email Shilohexpress@windstream.net

RED BARN AUTOMOTIVE LLC
 Rutledge, MO
660-216-2259
 No SUNDAY CALLS

www.hawkeyetrader.com

SCAG POWER EQUIPMENT Get the mower of your dreams.
0% for 48 months!

A variety of great financing plans are available to help you get the mower of your dreams, with payments that won't give you nightmares.

Program not available in all areas, and is subject to change or end at any time without obligation. New equipment only. All loans subject to approval. Fees may apply. Available to qualified buyers with rates dependent on credit records and credit score. Not all customers will qualify for the above listed program. Higher rates may apply for buyers with marginal credit.

Stop by today to learn more! **www.Scag.com**

USED SCAG ZERO TURNS	PRICE		PRICE
'18 STTII-61V-31DFI 350 HRS	\$11,500	'08 STWC61V-26KA-LC 513 HRS	\$5,000
'18 STTII-61V-26DFI 325 HRS	\$10,750	'11 STC61V-27CV 754 HRS	\$5,000
'18 STTII-61V-26CH-EFI 229 HRS	\$9,750	'10 STC61V-27CV 680 HRS	\$5,500
'18 STTII-61V-26CH-EFI 400 HRS	\$9,250	'02 STT52A-25CH 1500 HRS	\$3,500
'16 SCZ72V-35CV-EFI 130 HRS	\$8,500	'16 SPZ52-22FX 400 HRS	\$4,000
'17 STTII-52V-26CH-EFI 350 HRS	\$8,750	'01 STT61A-27KA 1911 HRS	\$3,500
'15 STT61V-26DFI-L/C 430 HRS	\$8,500		
'15 STT52V-26CH-EFI 487 HRS	\$7,500	USED COMMERCIAL WALK BEHINDS	PRICE
'12 SCZ61V-921FX 703 HRS	\$7,000	'99 SWZU48-17KA 1300 HRS	\$2,500
'15 SCZ48V-23CV-EFI 446 HRS	\$7,000	'07 SWZ48V-17KAE 1200 HRS	\$2,500
'16 STC52V-22FX 209 HRS	\$7,000	'04 SWZ48A-17KAE 1265 HRS	\$2,500
'13 SCZ61RD-31FX 681 HRS	\$6,000		
'16 SCZ48V-22FX 789 HRS	\$5,000		

Other Used Brands Of Zero Turns Available!

12372 Hwy 163 West • Prairie City, IA 50228
515-994-3200 • 800-994-3202
www.prairieeagsupply.com



JUDD MOTORS Hwy 63 North, Lancaster, MO
 Curly Or Kevin @ **660-457-3700**
www.juddmotors.com

www.juddmotors.com

- 2015 Chevy Impala Limited LTZ, Leather, Sunroof, White, 91K..... **\$9,495**
- 2013 Chevy Tahoe LT, 4x4, 5.3L, Heated Leather, Only 84K, Silver..... **\$23,495**
- 2012 Buick LaCrosse Premium, Silver, Heated Leather, Only 82K..... **\$12,900**
- 2012 Buick LaCrosse Premium, Leather, One Owner, 130K, Bronze..... **\$8,995**
- 2012 Ford Expedition XLT, 4x4, 5.4L, 8 Pass, 190K, White **\$6,495**
- 2011 Chevy Equinox LT2, AWD, V6, Leather, Gold Mist, 119K, Very Nice **\$9,995**
- 2011 Traverse LS, Only 93K Miles, White..... **\$8,995**
- 2010 Ford Escape Limited, V6, Leather, Sunroof, White, 129K **ONLY \$6,250**
- 2009 Saturn Outlook XE, 135K, Blue/Green, 8 Pass, Nice SUV **\$7,495**
- 2006 Chevy 1500, Crew Cab, 4x4, 5.3L, Green, 162K, 1-Owner, Very Nice **\$9,995**
- 2006 Buick LaCrosse CXL, Leather, Sunroof, 3.8L, 114K, Silver..... **\$6,250**
- 2006 Chevy HHR LT, Only 98K, Gray, Remote Start, Power Seat..... **\$4,495**
- 2004 GMC 2500HD, Ext. Cab, Short Bed, 4x4, 6.0L, 138K, Green, New Tires & Wheels, Very Nice **\$11,500**
- 2004 Ford F150, Super Crew, 4x4, V8, 140K Miles, Silver..... **\$7,995**
- 2003 Chevy 2500, Ext Cab, Shortbed, 4x4, 6.0L, 187K, Blue, Very Nice **\$8,495**
- 2002 Chevy 3500, Crew Cab, Dually, 4x4, 6.0L, Only 64K, White, Very Nice **\$17,900**
- Knapheide Steel Bed, 12 1/2 x 8 Ft., Good Condition..... **\$1,500**

ZIMMERMAN'S STORE

Main Street • Rutledge, MO • 660-883-5766

NEW LOAD YOGURT

Organic Gala Apples 64 Ct.....	\$23/Bu.
Golden Delicious Apples, 3 Lb. Bag.....	\$3.29
Special - Baby Carrots 1#.....	85¢
No. 1 Sweet Potatoes.....	95¢/Lb.

SPECIAL - 10 Lb. Dark Raisins.....	\$13.59
Squeeze Mayo, 22 Fl. Oz.....	\$1.09
Fruit In Jello Cups 4-4.3 Oz. Cups.....	85¢
Wesson Vegetable Oil, 16 Oz.....	\$1.49

Sunsweet Prune Juice W/Pulp, 32 Fl. Oz.....	\$3.29
240-260 Count Olives/Gallon Jar.....	\$16.65
Del Monte Fancy Cut Green Beans, Gallon.....	\$5.39

Organic Beet Root Juice, 32 Fl. Oz.....	\$13.39
Organic Tart Cherry Concentrate Unsweetened, 16 Fl. Oz.....	\$11.98
Liquid Vitamin C, 1000 Mg, 16 Fl. Oz.....	\$8.85

Easy On Spray Starch 20 Oz.....	\$1.98
Fels-Naptha Laundry Bars, 32 Fl. Oz.....	\$2.85
15 Large Rolls Plenty Paper Towels.....	\$13.98
H.E.B. Twice As Soft 2 Or 3 Ply Bath Tissue, 4 Rolls.....	\$2.19
H.E.B. Ultra Strong Bath Tissue, 16 Rolls.....	\$4.95

FABRIC SALE : APRIL 5 - 6 • FREE ICE CREAM CONE

YODER'S INDIAN CREEK FURNITURE: Think Spring...Think Purple Martin...Poly Martin Houses, 16 & 24 Unit Gourd Racks, All Available w/ Pole & Winch; Also Great Selection of Outdoor Poly Furniture & Fire Pits. 4 Miles North Of Cantril, IA, or 3/4 Miles South of Lebanon, IA on Rt V64. 22769 Route V64, Milton, IA. VM 319-538-7332 4-12

WE CAN FOAM IT! Spray Foam Insulation, Wall To Wall Savings, Free Estimates. Fox Valley Roofing. 319-677-6021 11-1

BAILEY FARMS: Bobcat Services, Trucking, Driveway Installs, Digging, Grading, Grading, Property Clean Up. New Virginia, IA. 515-720-0039 TFN

BULK: Hardwood Mulch, Red or Black, \$36/Cu Yard, Natural \$30/Cu Yard; Top Soil, Compost, River Rock, Red Crushed Brick, Sand, Driveway Rock. Pick Up or Delivery. Bailey Farms, New Virginia, IA. 515-720-0039 TFN

FOR SALE: Delta Electric Motor, 1 1/2HP, 12 Amp, 3450 RPM, \$40. 319-397-2166 4-5

Spring Is Coming & So Is The

DUST CONTROL REDUCES: DUST!!!

- Allergies From Dust
- Asthma Irritation
- Eye Irritations
- Endotoxins Exposure
- Dust Entering Your Home/Vehicles
- Coughing & Wheezing Caused By Breathing Dust

DUST CONTROL MAKES COUNTRY LIVING CLEANER & HEALTHIER!



660-202-7123 OR 660-958-3890
arcdustcontrol.com

SAM'S RIVERSIDE REPAIRABLES

805 SE 30th St • Des Moines, IA • Phone 515-265-1212 • Toll Free 800-308-4096 • www.samsriverside.com
 REPAIRABLES 515-265-1212 PARTS 515-265-8792 HEAVY TRUCKS 515-265-1656



2016 Ford Explorer XLT
61,924 Miles
\$16,900

SKU:G17783



2018 Ford F150 Lariat
Crew Cab, 4x4, Theft, 15,714 Miles
\$29,900

SKU:J36534



2017 Toyota Camry SE
Theft, Reg. Title, 39,823 Miles
\$13,900

SKU:H43226



2016 Chevrolet Silverado 2500HD LTZ
Crew Cab, 18,889 Miles
\$37,900

SKU:G44382



2016 Toyota Rav4 XLE
AWD, 28,691 Miles
\$17,900

SKU:G59383



2011 Buick Regal CXL
64,458 Miles
\$7,950

SKU:B12778



2007 Toyota Tacoma
Ext. Cab, 4x4, 70,345 Miles
\$15,900

SKU:770101



2012 Cadillac SRX Luxury Collection
58,609 Miles
\$12,900

SKU:C01316



2013 Chevrolet Tahoe LTZ
4x4, 65,133 Miles
\$23,900

SKU:D-8609



2014 Cadillac ATS
AWD, Performance, 57,870 Miles
\$14,900

SKU:E11011



2014 Honda CRV EXL
AWD, 48,622 Miles
\$15,900

SKU:E87380



2018 Volkswagen Jetta S
216 Miles
\$13,900

SKU:J62002



2019 Chevrolet Colorado LT
Crew Cab, 4x4, 6,089 Miles
\$27,900

SKU:K19574



2016 Ford Expedition Limited
4x4, Theft, Reg. Title, 51,271 Miles
\$27,900

SKU:G55008



2017 GMC Terrain Denali
AWD, 17,972 Miles
\$23,900

SKU:H25755

Our Hours Are 8:00 AM - 5:00 PM M-F - Sat 8:00 AM - 2:00 PM - Sun 1:00 PM - 5:00 PM

JIM CORDES MOTOR CO



Toll Free 877-918-7663 • 319-367-2271 • Detailing 319-367-2272

East Main St & Elm • Downtown New London, IA



#6346

2008 Chevrolet Silverado C1500
PW/PL, Tilt, Cruise, AM/FM CD Player, Aftermarket Wheels,
Dual Exhaust, Tonneau Cover, Running Boards, Tow Package,
Only 53,766 Miles, This Week Only \$11,990



#6345

2013 Volkswagen Jetta SE PZEV, PW/PL, Tilt, Cruise,
Leather Interior, Pwr Seat, Pwr Sunroof, Premium Wheels,
Excellent Tires, Only 62,270 Miles, This Week Only \$8,990



#6340

2011 Lincoln MKZ, AWD, PW/PL, Tilt, Cruise, Navigation,
AM/FM CD Player, Leather Interior, Heated & Cooled Seats,
Premium Wheels, Good Tires, Only 90,086 Miles,
This Week Only \$9,990



#6341

2010 Chevrolet Equinox LTZ, AWD, PW & PL, Tilt, Cruise,
AM/FM CD Player, Navigation, Dual Rear DVD Players,
Pwr Heated Leather Seats, Pwr Sunroof, Premium Wheels,
Like New Tires, Only 91,642 Miles. This Week Only \$11,990



#6294

2001 Chevrolet Corvette
PW & PL, Tilt, Cruise, AM/FM CD Player, Pwr Seat,
Leather Interior, Memory Seat, Removable Hard Top,
6 Speed Manual, Only 47,128 Miles. This Week Only \$15,990



#6309

2013 Chrysler Town & Country Limited, PW & PL, Tilt, Cruise, AM/FM CD
Player, Inconnect System, Blind Spot Monitor, Power Sunroof, Factory Tow Package
& Much More, Only 73,107 Miles. This Week Only \$17,990



#6289

2017 Chevrolet Cruze LT Hatchback
PW & PL, Tilt, Cruise, Only 22,192 Miles. NADA \$16,425.
Save \$1,425. This Week Only \$15,000



#6275

2015 Chevrolet Silverado LT, 4x4, Crew Cab, PW &
PL, Tilt, Cruise, One Owner w/Only 51,335 Miles. NADA
\$30,000. Save \$2,010. This Week Only \$27,990



#6300

2008 Chevrolet Equinox Sport, PW & PL, Tilt, Cruise, AM/FM CD
Player, Heated Leather Interior, Pwr Seat, Power Sunroof, Premium
Wheels, Excellent Tires, 83,177 Miles. This Week Only \$8,500



#6271

2014 Buick Regal AWD Premium I, PW & PL, Tilt, Cruise,
AM/FM CD Player, Heated Leather Interior, Pwr Seats, Power Sun-
roof, Heated Steering Wheel, XM Satellite Radio, Factory Warranty,
18,861 Miles. NADA \$20,425. Save \$2,425. This Week Only \$18,000



#6151

2010 Chrysler Sebring Limited, PW & PL, Tilt, Cruise,
AM/FM CD Player, Sirius Radio, Navigation, Pwr Driver Seat,
Leather Interior, Heated Seats, Pwr Sunroof, 22,267 Miles,
NADA \$11,675. Save \$2,500. This Week Only \$9,000



#6344

2011 Chevrolet Traverse, AWD, AM/FM CD Player, Pwr
Seat, 3rd Row Seating, Middle Bench, Premium Wheels,
Good Tires, Only 116,622 Miles. This Week Only \$9,990



#6277

2009 Buick Lucerne CXL, PW & PL, Tilt, Cruise, AM/FM
CD Player, XM Radio, Leather Interior, Heated Seats, New
Tires, Local Trade In, 110,023 Miles. This Week Only \$8,000



#6322

2009 Chevrolet Impala LTZ
PW & PL, Tilt, Cruise, AM/FM CD Player, New Tires, New Brakes,
Leather Interior, Power Sunroof, Pwr Seat, Heated Seats,
Only 66,270 Miles. This Week Only \$9,990



#6291

2016 Chrysler 300c, AWD, PW & PL, Tilt, Cruise, AM/FM CD
Player, XM Radio, Pwr Seats, Leather Interior, Heated & Cooled
Front Seats, Heated Rear Seats & Steering Wheel Sunroof,
Navigation, One Owner, 41,034 Miles. This Week Only \$21,500

Detailing Services

Superior Interior & Exterior Detailing
Starting at \$99 Plus Tax

Call to make an appointment
(319) 367-2272

SAM'S RIVERSIDE

Trucks & Parts

4100 Vandalia Rd
Des Moines, IA 50317
515-265-1656
OR 800-599-9551

We Have Many Parts & Accessories,
Wheels, Engines, Transmissions, Rear Ends, Cabs,
Hoods and Many More Parts



\$18,900

2018 Chevrolet Express G2500 Series
Extended Cargo Van, 4.3L Gas, Automatic,
8600 GVW, 245/75R16 Tires 75%,
31,019 Miles, Has Prior Salvage Title



\$21,900

2013 CAT 242B3 Skidsteer
Open ROPS, Engine: 75HP Tier 4 Interim
Compliant, 12-16.5 New Tires,
3102 Hrs, Ser# SRS02841,
Nice Clean Well Maintained Machine



\$15,900

2009 Ford F350 SD XL, 2WD, 5.4L V8 Gas,
Automatic, 9'x96" Flatbed, 245/75R17 Tires
65%, 142" WB, 13,000 GVW, Only 49,667 Miles,
Nice Clean Truck, Was a Theft Recovery,
Had No Damage, Has Salvage Title



\$39,500

2008 Peterbilt 340, Cummins 8.3 300HP,
Auto, 228" WB, 156" C/T, 16K Frt,
40K Rears, 56K GVW, Pete Air Trac,
Double Frame, 351,505 Miles,
Nice Clean Truck From the South



\$12,750

2012 Ford E-250 SD Cargo Van, 5.4L V-8
Gas Flex Fuel, Automatic, 245/75R16
Tires, Shelves, Frt Divider, Ladder Rack,
9000 GVW, 120,029, Nice Clean Cargo Van



\$12,900

2012 Chevy Express G2500 Cargo Van
4.8L V8 Gas, Auto, Bins & Shelves,
Curb Side Door, 136,380 Miles,
Nice Clean Cargo Van!



\$42,900

2010 Ledwell 25 Ton Sliding Axle Trailer
48'x102'W, 9'6" Top Deck, 36" Main Deck,
30" Slope, 38" Deck Height, Air Ride
Suspension, 20K Winch, Wireless Remote,
Nice Clean Trailer From The South



\$56,900

2006 CAT D5K XL Dozer, CAT C4 Engine,
Hydro Transmission, System One Under-
carriage 20" Tracks, 6 Way Blade, Multi
Shank Ripper, 5387 Hrs, Nice Clean Unit
From the South 60% Undercarriage



\$28,900

2007 GMC C-5500 Service Truck, Duramax
6.6L Engine, Allison, Knapheide 13 Ft Enclosed
Service Body 10 Compartments w/Awning, Oil
Tank, Hose Reels, 178" WB, 225/70R19.5 Tires
65%, 19,500 GVW, 231,836 Miles



\$38,900

2007 FLT M2 106, Ledwell Hydra-Tail
28 Ft x 102" Wide, 42" Deck Height,
20K Winch, Wireless Remote Control,
MBE 900 300HP, RT 8709B, 14K Frt,
40K Rear, Air Ride, 153,829 Miles



\$29,900

2007 Sterling IT9513, C-13 410HP,
RTO 16908LL, 18K Frt Axle, Tuff Trac,
196" WB, 15 1/2 Ft Stainless Steel Box,
192,889 Miles, Has Frt Damage,
Runs & Yard Drives, Salvage Title



\$18,900

2005 GMC C7500 S/A Dump Truck
Cat C-7 300 HP, Auto, 10 Ft. Steel
Dump Box, 36K GVW, 22.5 Tires 80%,
179,913 Miles, Well Maintained Truck



\$13,900

2010 Chevy G3500 Express One Ton
Cargo Van, 4.8L V8 Gas, Auto,
245/75R16 Tires 65%, Shelves & Ladder
Rack, Front Divider Wall, 105,590 Miles,
Nice Well Maintained Van



\$10,900

1978 Mack DM 685S, Mack 237HP,
Mack Transmission, Camel Back Susp,
16 Ft Aluminum Brady Dump Box,
217" WB, 54,200 GVW, 131,134 Miles,
Nice Clean Well Maintained Truck



\$56,900

2006 CAT D5K XL Track Dozer, CAT C-4 Turbo
Engine, Hydro Transmission, 20" Tracks,
6 Way Blade, Multi Shank Ripper, 5387
Hrs, Nice Clean Unit From the South, 60%
Undercarriage, Like New Cutting Edge



\$12,900

2000 IH 4900, DT-466 230HP,
7 Spd Spicer, 9 Ft Steel Box w/Tarp,
12 Ft Snowblade, Air Brakes, 172" WB,
100" C/A, 22.5 Tires, 156,221 Miles,
Nice Truck, State Maintained



\$12,900

2000 GMC Topkick C-6500 Service Truck,
CAT 3126E 230HP, Allison Auto, Hyd Brakes,
245/70R19.5 Tires 65%, 25,900 GVW, 158"
WB, 11 Feet - 8 Compartment Service Body,
Liftmore 5000 Lbs Crane, 178,372 Miles



\$28,900

2005 IH 4400
IH DT 570 310HP, FRO 11210C, Air Ride
5.29 Ratio, Has PTO, 235" WB,
168 C/T, 12K Frt, 40K Rears, 196,873 Miles



Sioux Calving Pens



**B&W Corral Panels
Feed Bunks
Bale Feeders**



**For-Most
Chutes
&
Headgates**



M&W Hay Forks

Hamilton Produce Co. 105 W. Franklin
Bloomfield, IA
641-664-2459 or 1-800-469-7749



**2015 Kubota
RTV X1120D
VHT-X Hydraulic
Dump Bed, Diesel,
Power Steering,
Windshield, Top**

NO DOC FEES! **\$9,995**

C&C Cycle
Chariton, IA • 888-475-2243
www.cc-cycle.com

**WANTED!
JD or Vermeer Round Baler**



913-231-7015

TRUCKS & TENDER TRUCKS & ALL TYPES OF APPLICATION EQUIPMENT

Worthington
AG SERVICE INC.

YOUR SALFORD BBI DEALER
(800)353-6380
OR (660)355-4440
www.worthingtonagequip.com
Email: AGSERV@NEMR.NET
WORTHINGTON, MO 63567

BALDWIN FILTERS

CHAMPION
HI-TECH LUBRICANTS

**Worthington Ag Has Teamed Up With
Champion Oils & Baldwin Filters!**

**Come Check Out Our
Everyday Prices!**

**They Beat Our Competitors
Sale Prices & We'll Deliver
Larger Quantities!!**

TREE PULLING: and
Fence Cleaning Jobs,
100HP Skidloader, \$85.00
Per Hour.
641-777-9134

**SCOTT HUSKEY'S HOME
SERVICE!:** R-10 2 Inch
Thick Insulated Skirting
Systems. Check Out Our
Lower Rates for 2018. Since
1972!
573-696-3468
or 573-296-0089

PETS

FOR SALE: Great
Prynees Puppies, 11 Wks
Old, Great Guard Dogs,
Working Parents w/Sheep.
Bloomfield, IA.
641-799-2137

FREE HEAT & WATER:
Eliminate Monthly Heating
Bills With Classic Wood
Furnace. No Sunday Calls.
660-707-3866

ETFN
TFN

FOR SALE: AKC Welsh
Corgi Puppies, Born Feb
4th, Had Shots, Have 4
Males, \$1,200.
660-988-1806



FOR SALE: Red & Blue
Heeler Pups, Males, 4
Months Old, All Shots and
Wormed, Starting to Work,
\$125 Each.
641-328-4106

RECREATIONAL

FOR SALE: Kit Fox & Avid
Airplanes Kits, Both New.
641-452-6656

FOR SALE: 4-Wheeler,
Kawasaki 220 Bayou, Red
w/Camo Seat, Very Nice.
Loren Martin.
660-341-1854

**Check Us Out!
New Edition Online
Every Thursday Morning!**

www.hawkeyetrader.com

CARTER'S
FOOTWEAR * WORK & CASUAL APPAREL
TRAILERS * CABINS * SHEDS * CARPORTS * STORAGE
KIRKSVILLE, MO 660.665.2817
LOCATED 5 MILES SOUTH OF KIRKSVILLE, MO ON HWY 63
Your One Stop carhartt & Boot Shop! www.CARTERSTRAILERS.com
HOURS: MONDAY-SATURDAY 9AM-6PM

DOOLITTLE TRAILER MFG. EQUIPMENT

**NEW 2019
102" X 18' + 2' DOVE
EXTREME EQUIPMENT TRAILER**

**OUR BEST PRICE:
\$5450**

(MSRP: \$6,400)

FEATURES: 14,000 GVWR, LED LIGHTS, NEW 10-PLY RADIAL TIRES,
WRAPPED TONGUE, 5' HEAVY DUTY SELF-STORE RAMPS, DRIVE-OVER FENDERS,
EZ LUBE HUBS, 2 ELECTRIC BRAKE AXLES, SPARE TIRE CARRIER,

DOOLITTLE TRAILER MFG. EQUIPMENT

**NEW 2019
77" X 16' SOLID SIDES
UTILITY TRAILER**

**TANDEM AXLE
7,000 GVWR**

SOLID STEEL SIDES, LOCKABLE TOOLBOX,
LED LIGHTS, NEW 6-PLY RADIAL TIRES,
5' SPRING ASSISTED RAMP GATE

**OUR BEST
PRICE:
\$2,700**

(MSRP: \$3,100)

DOOLITTLE TRAILER MFG. EQUIPMENT

**NEW 2018 77" X 12'
SOLID SIDED
UTILITY TRAILER**

SOLID STEEL SIDES,
NEW 6-PLY RADIAL TIRES,
LOCKABLE TOOLBOX,
3,500 LB. AXLE, LED LIGHTS,
5' SPRING ASSISTED RAMP GATE

SALE: \$1,800

FOR SALE: One Tri-Color
Mini Aussie, Male, Born, 12-
1-18, \$250 OBO.
641-208-5308

FOR SALE: Silver &
Charcoal Lab Puppies,
Full AKC Registration, Vet
Checked & Certified w/All
Shots at 8 Weeks, Both
Parents Are Family Pets/
Hunters & On Site, DOB
2/07/19. Call or Text.
319-759-1025

PUPPIES PUPPIES: We
Want to Buy Your Puppies!
Registered or Mixed
Breeds. We Have Homes
Waiting for Them!
573-784-9866

REAL ESTATE

FOR SALE: 12 Acre
Acreage w/3 Bedroom
Ranch Home w/3 Car
Garage & Shop, Also
Numerous Buildings & a
Pond, Close to Ottumwa,
IA. Call Evenings.
641-661-2993

**LINCOLN HOMES SPRING
SALE!** Quality Built
Modular & Manufactured
Home On Display. Factory
Direct Prices With Free Set
Up & Installation Within 100
Miles.
Lincoln Homes
Hwy 30
Ogden, IA 50212
lincolnhomesia.com
515-275-2717

KOLLISION
504 S. Drake Street • Bloomfield, IA 52537
641-664-2648

RRZZOR



\$16,225

**2018 Equinox
4 Cyl, 24K Miles**

CHECK US OUT ON
FACEBOOK



**FOR RENT:
2008 Skytrak Telehandler 6036**
\$500 Weekly Rate • \$1,500 Monthly Rate w/One Year Contract

660-988-7609
For More Info Call

SLAYTON POLARIS
8 Miles South & West of Pulaski, IA Or 6 Miles West Of Memphis, MO & 13 Miles North On Hwy B
660-328-6627



\$10,000

2015 Polaris Ranger 570XP
Power Steering, Cab,
3100 Miles, Very Good
Condition



\$8,295

2015 Polaris Ranger 570
Mid Size, Cab & Heat,
Power Steering, 3900 Miles,
Very Good Condition



\$16,795

**2017 Polaris General 1000
Deluxe, Full Cab Heater, Radio,
Front & Rear Bumper, Very Nice
Condition, 3300 Miles, Hard Doors!**

www.rsautosalesinc.com • 319-696-2981 • Lockridge, IA • www.rsautosalesinc.com • 319-696-2981 • Lockridge, IA • www.rsautosalesinc.com



\$16,900 86K Miles
2004 SunCruiser Motorhome by Winnebago V8 Engine, Auto, 2 Slideouts w/Awning, Generator, Needs a windshield & minor work, Runs & Drives, Fully Equip. Retail \$32,000.



\$14,900 134,563 Miles
2009 Chrysler Town & Country Brauns Conversion Handicap, Kneel System, Wheelchair Ramp, Swivel Seat, Cloth Interior, Auto, Rear Air, Rust Free



\$27,900 38,930 Miles
'16 GMC Sierra 2500HD, 6.0L V8 Gas, Auto, Knapheide Utility Bed w/Storage Compartments, LED Lights, Wide-Load Heated Mirrors, OnStar, Extra Clean



\$26,900 137,977 Miles
2011 GMC Sierra K2500 HD Denali 6.6L, 4x4, Duramax Diesel, Allison Transmission, Navigation, Sunroof, AC/Heated Leather, Rear Camera, Crew Cab



\$25,900 REDUCED \$23,900 60K Miles
'14 Ram 1500 SLT, 3.0L, V6 Turbo Charged, EcoDiesel, 4x4, 6 Spd Auto, Crew Cab, Knob Shifter, Black Cloth



\$5,450 Local Trade
'00 Silverado 2500HD LS, 6.0L, 4x4, Auto, 2 Dr, Long Bed, New Transmission, New Transfercase, Hand Control For Snow Plow Without Snow Plow

R.S. AUTO INC.
www.rsautosalesinc.com
Office (319) 696-2981
214 S. Center St
Lockridge, IA 52635
rsautoinc@yahoo.com
SPRING SALE SPECIAL! Check Our website for our wide variety on 4x4 Trucks - Cars - Mini Vans - Handicap Vans - SUV Motorhome & Much More



\$10,900 96,568 Miles
'08 Ford F150 XLT 5.4L, V8 Triton, 4x4, Super Cab, Auto, Black Cloth, Rust Free, Sharp!



\$10,450 139,917 Miles
'06 GMC Sierra K1500 SLE 4.8L, V8, 4x4, Auto, Gas, Crew Cab, New Tires, Cloth Interior, Rust Free, Sharp!



\$24,900 REDUCED \$23,900 61,025 Miles
'09 Ram 2500 SLT 6.7L, 4x4, Diesel, 6 Spd Manual, 2 Dr Reg Cab, Longbed, Cloth Interior, Sharp



REDUCED \$23,900 95,249 Miles
'08 Ram 2500 SLT 6.7L, 4x4, Diesel, 6 Spd Manual, Over \$6,000 of Aftermarket Parts, Aftermarket Wheels, Stock Pipe, Lift Kit, Sharp!



\$16,900 Local Trade
'06 Ram 2500 SLT 5.9L, 4x4, Cummins Turbo Diesel, Auto, Quad, Longbed, Heated Leather, Rust Free, Excellent Shape



\$9,900 143K Miles
'07 Ford F150 FX4 5.4L, V8, 4x4, FX4 Offroad, Automatic, Super Cab, Black Cloth, Extra Clean Interior, Rust Free, SHARP!



\$8,900 90,944 Miles
'07 Ford Ranger XLT 4.0L, V6, 4x4, Auto, 4 Dr Ext Cab, Bedliner, Cloth Interior, Power Mirrors & Windows



\$11,900 99,239 Miles
'07 Ram 1500 SLT V8 Engine, Automatic, 4x4, Quad Cab, New Tires, Black Cloth Interior, Rust Free, Super Clean



REDUCED \$39,900 3,774 Miles
'16 Chrysler Town & Country 3.6L VMI Conversion Handicap, Kneep System, Pwr Ramp, DVD, Heated Leather, Loaded



\$28,900 64,747 Miles
'14 Dodge Grand Caravan 3.6L, FWD, Auto, VMI Northstar Handicap Van, Power Slide Wheelchair Ramp, Cloth Interior, Rear Climate Control



\$3,450 Local Trade
'96 Dodge Grand Caravan 3.3L, FWD, Auto, EnterVan Conversion Handicap, Kneel System, Power Fold Ramp, Runs & Drives



\$10,450 11,292 Miles
'12 Dodge Grand Caravan SE 3.6L, FWD, Auto, Stow-N-Go, 3rd Row Seating, Leather Seats, Pwr Sliding Doors



\$5,900 90,544 Miles
'99 Ford F350 Service Truck 5.4L, V8, Auto, Utility Bed w/Generator, Air Compressor, Blower, Breaker Box, Good Title, Normal Wear



\$2,900 LOCAL TRADE
'01 Ram 1500 Laramie SLT 5.9L V8 Engine, 4x4, Automatic, Quad Cab, Like New Tires, Rebuilt Motor & Transmission



\$13,900 60,887 Miles
'15 Ford Escape SE 2.0L, 4 Cyl, AWD, EcoBoost, Auto, Backup Camera, Bluetooth, Sync by Microsoft, Loaded



\$12,450 REDUCED \$11,900 72,974 Miles
'11 Ford Edge SEL 3.5L, AWD, Auto, Park Assist Sensors, Rear Camera, Sunroof, Heated Leather, Hands Free Calls, Loaded



\$11,900 145,039 Miles
'07 Chevy Tahoe K1500 LT 5.3L, V8, 4x4, Auto, 3rd Row, 7 Pass, Black Cloth, Sunroof, Sirius XM



\$6,900 144,647 Miles
'08 Kia Sorento 3.8L, V6, 4x4, Auto, Sport, Park Assist, Sunroof, Gray Leather, Trade In, Clean Title



\$7,900 61,261 Miles
'08 Pontiac Torrent GXP 3.6L, 6 Cyl, FWD, Auto, Sunroof, Chrome Wheels, Black Heated Leather, Sirius XM, Remote Start



\$5,450 126,813 Miles
'08 Saturn Vue XR 3.6L, V6, FWD, Auto, Local Trade, Heated Leather, Extra Clean, Sharp!



\$6,900 131,321 Miles
'07 Ford Explorer XLT 4.0L, 6 Cyl, 4x4, Auto, 3rd Row Seating, Gray Heated Leather, 7 Pass, Local Trade, Super Clean



\$5,450 138,688 Miles
'07 Jeep Liberty Sport 3.7L, V6 Engine, 4x4, Automatic, Cloth Interior, Rust Free, Local Trade, Excellent Condition



\$3,900 LOCAL TRADE
'07 Mercury Mariner Luxury 3.0L, V6, AWD, Auto, Gas, SUV, Sunroof, Black Heated Leather, Normal Wear, Nice



\$3,450 135,446 Miles
'03 Chevy Trailblazer LT 4.2L, V6, 4x4, Auto, 3rd Row Seating, Black Heated Leather, OnStar, Rear Air, Great Shape



\$3,900 139K Miles
'03 Buick Rendezvous CX 3.4L, V6, Auto, Gas, 3rd Row Seating, Gray Cloth, 7 Pass, Park Assist, Excellent Shape



\$4,900 85,668 Miles
'09 Dodge Caliber SXT 2.0L 4 Cyl, FWD, Auto, Cloth Interior, Voice Command, Sirius XM, Good Title



\$16,900 31,927 Miles
'11 Cadillac CTS4 Premium 3.6L, AWD, Auto, Rear Camera, Leather, Navigation, Remote Start, Loaded



\$17,900 102K Miles
'10 Dodge Challenger SRT-8 6.1L Hemi, V8, RWD, Coupe, 6 Spd Manual, Gas, Black Leather, Fully Loaded



\$7,900 100,395 Miles
'12 Buick Regal 2.4L, 4 Cyl, Auto, Sedan, Leather, Heated Steering Wheel, Sirius XM, Rust Free, Nice



SPECIAL PRICE \$5,900 101,178 Miles
'08 Buick Lucerne CXL 3.8L, V6, Park Assist, Heated Mirrors, Heated Steering Wheel, Heated Leather, OnStar, Super Nice



\$5,900 89,474 Miles
'08 Pontiac G6 3.6L, V6, FWD, Auto, Sedan, Spoiler, Cloth Interior, Rust Free, Sharp!



\$9,900 80K Miles
'11 Toyota Prius 1.8L, 4 Cyl, Auto, Hybrid Engine, Push Button Start, Leather, Anti-Theft System, Extra Clean



\$2,900 171,763 Miles
'08 Kia Sedona LX 3.8L, V6, Auto, Gas, 3rd Row Seating, Gray Cloth, 7 Passenger, Local Trade, Normal Wear



\$2,900 Local Trade
'98 GMC Suburban K1500 5.7L, V8, 4x4, Auto, Leather, DVD, Rear Climate Control, Normal Wear



\$3,450 94,921 Miles
'03 Pontiac Grand Am GT 3.4L, V6, FWD, Auto, 2 Dr, Sunroof, Spoiler, Heated Leather, Good Tires, Sharp Clean Unit



\$2,950 163,703 Miles
'02 Buick LeSabre Limited 3.8L, FWD, Auto, Heated Leather, Sirius XM, Heated Mirrors



\$2,650 128K Miles
'97 Chevy Cavalier 2.2L, 4 Cyl, Auto, Sedan, Charcoal Cloth, Runs & Drives Great



\$1,995 LOCAL TRADE
'96 Ford E250 Cargo Van 4.9L, V6, Automatic, Gas, Cargo Van, Vinyl Seats, Runs & Drives, Normal Wear



\$2,450 97,493 Miles
'96 Mercury Cougar XR7 4.6L, V8, Automatic, Gas, 2 Dr Coupe, Leather Interior, Extra Clean, Runs & Drives, Local Trade



PRICE REDUCED \$1,995 169K Miles
'01 Ford Taurus SES 3.0, V6, FWD, Auto, Sedan, Gray Cloth, Good Tires, Runs & Drives Great



\$2,900 161K Miles
'88 Chevy Silverado 1500 5.7L, V8, 4WD, 2 Dr Std Cab, Long Bed, Normal Wear, 3 Pass, Runs & Drives Great



\$995 119,188 Miles
'03 Dodge Grand Caravan Sport 3.3L, 6 Cyl Engine, FWD, Auto, 3rd Row Seating, 7 Pass, Rear Air, Gray Cloth, Normal Wear



\$1,495 Local Trade
'01 Oldsmobile Intrigue GE 3.5L, V6, Auto, Sunroof, Leather, Normal Wear, Runs & Drives



\$995 Local Trade
'06 Chevy Cobalt LT 2.2L, 4 Cyl, FWD, Auto, Gray Cloth, Pwr Windows & Mirrors, Runs & Drives Great, Normal Wear

www.rsautosalesinc.com • 319-696-2981 • Lockridge, IA • www.rsautosalesinc.com • 319-696-2981 • Lockridge, IA • www.rsautosalesinc.com



RV & Trailer Sales

Monday-Thursday 9:00 am - 5:30 pm
Friday 9 am - 5:00 pm • Saturday 9:00 am - 2:00 pm

20 Miles East Of
Des Moines On I-80
To Exit 159 • Colfax, Ia
877-674-3573
www.csrvsales.com

Over 120 New & Pre-Owned Available!

Here Are Just a Few of Our Great Deals!



#3665

Shadow Cruiser 193MBS
One slide, rear bath, Murphy bed queen, booth dinette, glass door shower, easy tow!
MSRP \$27,229
SALE PRICE \$19,469



#8842

Wildwood X-Lite 201BHXL
2 rear bunks, a front Queen E-Z bed, booth dinette, jackknife sofa, perfect family camper to get out & explore! When the E-Z bed is up you have extra room for rainy days! Includes larger double door refrigerator!
MSRP \$20,185
SALE PRICE \$14,750



#0498

'07 Zinger 27BH
Rear bunks, pass-through storage, easy tow!
MSRP \$9,999
SALE PRICE \$8,995



#3666

Shadow Cruiser 225RBS
Rear bath, U-dinette slide-out, extra long kitchen counter top, front queen bed, curved glass door shower!
MSRP \$29,899
SALE PRICE \$21,900



#4017

Wildwood X-Lite 171RB
Easy tow rear bath w/front queen Murphy bed, jackknife sofa, booth dinette, 10.7 cu ft refrigerator!
MSRP \$22,795
SALE PRICE \$15,979



#9669

'10 Zinger 25RK
Rear kitchen w/1 slide, jackknife sofa & booth dinette, full bath, private queen bedroom!
MSRP \$13,750
SALE PRICE \$11,999



#7685

'16 Palomini 180FB
Front queen bed, booth dinette, full kitchen, large rear bathroom!
MSRP \$12,999
SALE PRICE \$11,999



#6802

Shadow Cruiser 251RKS
Rear kitchen w/long sofa slide, booth dinette, great storage, full bath, front queen bedroom, w/lots of great features!
MSRP \$31,977
SALE PRICE \$23,999



#8721

Wildwood X-Lite 230BHXL
1 slide, 2 bunks, U-dinette in the slide out, Queen E-Z bed, easy half-ton tow! Check out the HUGE pantry!
MSRP \$23,750
SALE PRICE \$17,500



#0159

Shadow Cruiser 263RLS
Rear living w/large slide, jackknife sofa, booth dinette, full bath, front King bed, dual entry, Extended Season package & more!
MSRP \$33,519
SALE PRICE \$25,599



#8001

'06 Tropical 351
2 slide diesel class A motor home with only 54K miles!
MSRP \$69,999
SALE PRICE \$65,399



#7947

Cougar 27RLS
3 Slide Rear Living, 1/2 Ton Towable, Tri-fold Sleeper Sofa, Table & Chair Dinette, TV Retracts Behind Fireplace, Center Kitchen Island!
MSRP \$47,092
SALE PRICE \$33,999



#7766

Shadow Cruiser 289RBS
2 slide bunk model w/TWO bathrooms, extended season package, upgraded A/C! Great family camper!
MSRP \$35,829
SALE PRICE \$25,999



#2548

Cougar Half Ton 30RLS
3 slide rear living w/theater seating recliners, tri-fold sleeper sofa, center kitchen island, table & chair dinette, and private bathroom w/large shower!
MSRP \$51,069
SALE PRICE \$38,799



#0055

Triton 3451
One slide Triton series toyhauler w/full 60x80 queen bed, generator, dual A/C, tank heaters, and more!
LIST \$63,719
SALE PRICE \$41,399



#7116

'05 Lexington 255DS
2 slide class C gas motor home, generator, jackknife sofa, very clean, only 49K miles!
MSRP \$34,750
SALE PRICE \$31,999



#2729

Heritage Glen 356QB
4 slide rear bunk house w/dual opposing slides in bunk room, plus 2 full bathrooms & outside kitchen!
MSRP \$60,465
SALE PRICE \$45,999



#2046

'07 Cardinal 33TSLE
3 slide rear living w/2 recliners, hide-a-bed sofa, table & chair dinette, 8 cu ft fridge, washer/dryer hookup, ceiling fan, central vac & more!
LIST \$20,999
SALE PRICE \$25,900



#0549

Voltage 2655
3 slide toyhauler w/12'6" garage, generator, ramp patio, electric beds/dinette in garage, reclining sofa w/heat & massage, 6 pt auto-level, dual A/C, central vac, much more!
LIST \$90,498
SALE PRICE \$59,999



#0399

Raptor 426TS
Triple axle toyhauler w/13' garage! 3 slides, table & chair dinette, theater seating recliners, king bed, patio deck, rear patio screen doors, 6 pt auto level, triple A/C, central vac, backup camera, generator, loaded!
LIST \$105,477
SALE PRICE \$69,999



#5989

Pursuit 27KB
29' gas motorhome has large slide, full walk-around King bed, drop down overhead bunk in cockpit, generator, loaded!
LIST \$122,067
SALE PRICE \$75,325



#3074

'11 Hurricane 31D
2 slide class A gas motorhome, slides oppose each other in living room, rear queen bedroom, only 4K miles!
LIST \$54,990
SALE PRICE \$49,999



#9207

Pursuit 27DS
Pursuit Precision gas class A w/2 slides, King bed, 3 TV's, 72" booth dinette, electric bunk over cab, generator, only 28'9"!
LIST \$119,269
SALE PRICE \$77,999



#8022

Chateau 22B
LIKE NEW, one owner, only 1,800 miles! Class C w/bed slide, cabover bunk, booth dinette, good storage, generator! Go anywhere!
MSRP \$67,935
SALE PRICE \$57,950



#6219

'08 Endeavor 40SKQ
Class A diesel pusher w/4 slides, washer/dryer, generator, auto level, spacious, only 31K miles! Cummins 400HP diesel, Roadmaster chassis, Allison transmission
LIST \$132,500
SALE PRICE \$115,599

ESTATE AUCTION

WILLIAM TAYLOR ESTATE

ACREAGE & FARM EQUIPMENT AND MUCH MORE!

SATURDAY, APRIL 13TH • 12:00PM

1785 S. SHADYVIEW BLVD., PLEASANT HILL, IA 50327

Acreege & farm equipment, garage, tools & shop galore, household treasures including vintage & antique finds.

Online bidding for the large equipment will be available.

ACREAGE & FARM EQUIPMENT: 2011 Massey Ferguson 1660 Tractor w/loader, Arctic Cat 250 ATV, Heavy Equipment Trailers, Drott "skid shovel" Crawler w/bucket, 1997 Dodge Ram 3500 Dump Truck, AMMCO portable lift, misc. implements & attachments.

GARAGE, TOOLS & SHOP EQUIPMENT: Tool Chest & Workbench, Drill Press, Air Compressors, Lathe, Welder, many tools both hand & power.

VINTAGE, HOUSEHOLD & MISC: Oil Can Collection, models, die-cast & tin-litho toys, furniture, appliances, Dulcimer, military patches, insignia, buttons, etc., small collection of coins, Antique & Vintage Treasures! Many more items to yet be uncovered!



ANDREAS & ASSOCIATES

Auctioneering & Appraisal Services

515-681-7735

SEE WEBSITE FOR PHOTOS, TERMS & DETAILS.
www.andreasauctions.com

Estate

Incoming Producing Property!



Sunday, April 28, 2019
12:00 Noon

1623 E. County Line Road • Des Moines, Iowa
From the Intersection of E. Army Post Rd. and SE 14th St.
south on SE 14th to SE 80th (E. County Line Rd.)



"We Sell it the Day You Need it Sold!"

50 YEARS



General Description:

Offering at Public Auction 12 acres m/l income producing property w/frontage to E. County Line Road. Improvements include:

4 Bedroom two family duplex with large shop/garage!

Dwelling #1: 1200 sq. ft. • Dwelling #2: 2599 sq. ft.
There is a 35' x 105' garage with overhead doors located in the center of the duplex!
Improvements include new roof & new furnace!

2 Unit Apartment Building!

Unit #1: 784 sq. ft. w/patio • Unit #2: 784 sq. ft. w/patio
Improvements include new furnace in 1 unit. Septic w/access to city sewer! Stocked Pond!

Income: Duplex: \$1,300.00 per month (\$650 per side)
Apart. #1 \$1,000.00 per month • Apart. #2 \$ 875.00 per month
Total monthly income \$3,175 Excellent Rental History!

Lot size: (2 Parcels) 7.23 acres & 4.04 acres **Net Taxes:** \$8,698.00 **Zoning:** M-Multi Residential

Terms: Cash, 10% down payment day of auction w/balance due at closing, on or about May 28,2019. Property is sold in AS-IS condition w/NO contingencies. Clear title guaranteed. Septic system is Exempt from inspection.

Estate of Donald G. Speck

Daugherty Auction & Real Estate Services, LLC.

Chad Daugherty ~ Owner/Auctioneer • Kelly Daugherty ~ Auctioneer

North River Realty, Mike Bobst-Broker 515-468-7674

Matthew D. Gardner, Gardner Law Firm, P.C. -Closing Attorney

416 Greene St. Adel, IA (515) 993-4159 ~ d_auction@hotmail.com

See Us on the Web at www.daughertyauction.com

The information in this brochure is from sources deemed to be reliable but it cannot be guaranteed by Daugherty Auction and Real Estate Services, LLC.

Huge Harrison County Missouri Land AUCTION

Bethany, Missouri

THUR., APRIL 18, 2019 AT 10AM



552 acres +/-

BETHANY, MISSOURI - From exit 93, Interstate 35, the Land is located 2 1/2 miles east on E 300th St. **Auction at the First Call Storm Removal Office, 3903 Bulldog Ave, Bethany, MO. From exit 93, Interstate 35, 1/4 mile west on Bulldog Ave.**

- 4 tracts (Subject to Survey)
- 10 ponds & Large Creek
- 7 elevated hunt blinds
- 20'x30' cabin w/ 20'x20' loft

EIVINS FARMS, LLC
JEREMY & RACHEL EIVINS

Attorney for Seller: David B. Parman
108 W. Wood Street, Albany, MO 64402
Closing/Title Work: Missouri Land Title Co.
1516 Main Street, Bethany, MO 64424
Contact Adrian Wolfe of Steffes Group,
319.385.2000 or by cell 641.414.2256



SteffesGroup.com

Steffes Group, Inc. | 2245 E Bluegrass Rd, Mt. Pleasant, IA | 319.385.2000



DECATUR COUNTY, IA

60 Acres - 1 Tract

Thursday, April 18th, 2019 • 3 PM • Lamoni, IA

LAND AUCTION

- 60 +/- Acres
- 48.36 Cropland Acres
- 56.3 CSR2 Value
- Farm Drains well
- Building Site
- Farm is located 2 miles Southwest of Lamoni, IA



Auction Location:

The Lamoni Community Center, Lamoni, IA

Land Broker - Cody Skinner 515-443-6343

Land Broker - Matt Skinner 515-443-5004

VIEW DETAILS AND LAND FOR SALE AT IOWALANDCOMPANY.COM



Nick Skinner
515-650-0974



Luke Skinner
515-468-3610



Matt Skinner
515-443-5004



Cody Skinner
515-443-6343

METAL ROOFING



Installing Metal Roofing On All types of Buildings

Houses & Barns
Commercial &
Residential

Customer Satisfaction
Is Our Goal!

WAGLER BUILDERS

CALL TODAY FOR A FREE ESTIMATE: 641-777-5000
EMAIL: waglerbuilders@hotmail.com
www.waglerbuilders.com



2007 FLHT Electra Glide Security, Kenwood Sound System, SE Mufflers, Sissy Bar, ISO Grips, 46K

NO DOC FEES!

\$10,995

C&C Cycle
Chariton, IA • 888-475-2243
www.cc-cycle.com

FOR SALE: 1996 Fisher 17 Ft Deep V Fishing Boat w/115HP Mercury Motor & Trolling Motor. 319-931-1312 4-5

FOR SALE: 4 Grain Bins w/ Drying Floor; 1-8,000 Bushel, \$8,000; 2-6,000 Bushel, 1-\$5,500, 1-\$6,000; 1-3,600 Bushel, \$3,500; 5,000 Bushel Harvest Stor Grain Bin w/ Drying Floor, Great Condition, Buyer Responsible for Take Down & Moving Bins. 641-722-3300 4-5

AG RELATED

FOR SALE: Krause Soil Finisher, 27 Ft, Model 6300 w/ Rolling Baskets. 641-777-1931 4-12

ESTATE AUCTION

SUNDAY, APRIL 14TH • 12:00 PM

Located at: 108 Second St. • Eddyville, IA
(Inside Building next to Public Library)

Pickups & Four-wheeler: 2009 Toyota Tacoma 5 spd 4-cyl 4x4 single cab 6.5' bed, 1997 F150 5 spd 4x4 V6 short-bed single cab, 2004 Honda Rancher 4-wheeler.

Furniture: wing-back easy chair w/footstool, 3-pc bedroom set - King bed- Vanity w/ mirror & chest of drawers, oak drop-front desk, gun cabinet, cedar chest, LG flat-screen TV, Sony flat-screen TV, Flexsteel sofa, wooden bookshelves, Wooden office chair, wooden tea cart, wooden wall desk, 7' 4-door cabinet, corner shelf, kitchen table, old desk, record cabinet, easels, Singer sewing machine in cabinet, kitchen cart, Schwinn air dyne exercise bike, drafting table & stool, magazine rack, Cane-seat rocker, wooden toy box.

Primitives & Collectibles: old treadle jigsaw, wooden highchairs, hall table, ice tongs, old saws, chalkboard, child's rocker, wooden ice cream bucket, mantel clock, wooden radio box, kerosine lamp bracket, old brown crock, copper buckets, old violin & clarinet, 45 & 33 records, old tube-type radio, wooden baby cradle, 3-gal Western crock butter churn, crock bowls, old iron, old wooden bassinet, kerosine lanterns, campaign pins, presidential buttons, printer's tray, primitive wooden table, husking pegs, skis & poles.

Glassware & Household: several pcs of Westmoreland milk glass, crystal pcs, asst China, amber glass, Isabell Blume pcs., pots & pans, dishes, small elec appliances, Longaberger baskets, P.Buckley Moss prints & plates, Insta-Pot, Patriot vacuum, Christmas plates, board games, Christmas decorations, paper cutter, tablecloths, oval & room rugs, pitcher & bowl, baskets, new woodstove - in crate, multiple totes, bacon press, Weber grill, cookbooks, wall clock.

Crafts & Tools: hand-painted & framed artwork, painted pictures, art supplies, craft items, books, art books, storage containers, garden tools, Dremmel, saber saw, and many more unlisted items.

Estate of Aileen Hedge

*HEATED BUILDING - MAY BRING OWN SEATING *TERMS: CASH OR CHECK ONLY
*FOOD BY EDDYVILLE HIST. SOC.
*ALL ANNOUNCEMENTS MADE DAY OF SALE TAKE PRECEDENCE OVER ADS.
*NOT RESPONSIBLE IN CASE OF ACCIDENT OR THEFT.

SINNIF AUCTION SERVICE LLC

J.D. Sinnif & T.J. Sinnif - Auctioneers
Cell 641-799-3615 web - www.sinnifauction.com
Or check out Sinnif Auction LLC on Facebook



TAMA LIVESTOCK AUCTION

641-484-3465

Fed Cattle, Slaughter Cows & Bulls
Every Wednesday at 9:00 am



SPECIAL SALE

Monday, Apr 8 - 11:00 AM
Monday, Apr 29 - 11:00 AM
Monday, May 20 - 11:00 AM

BREEDING BULLS C/C PAIRS

Monday, May 6 - 11:00 AM

For Markets & Listings go to
www.tamalivestock.com

4th Annual Spring Machinery Consignment Auction

Friday, April 19th, 2019 at 10:00 AM Sharp

2122 470th Ave • Deep River, IA 52222
****Consignments Wanted****
Farm & Livestock Equipment, Tractors, Trucks, Trailers, ATV's,
Lawn Equipment, Boats, Shop Tools & Fencing Supplies.

All Items Will be Advertised Online at WIDMER AUCTIONEERING on Facebook & at widmerauctioneering.com Daily As The Arrive at the Auction Yard. Items May Start Arriving NOW. Call Ahead of Arrival PLEASE 641-660-9264.

TERMS: CASH OR *GOOD* CHECK W/POSITIVE ID. ID IS REQUIRED TO RECEIVE A BID NUMBER. NOT RESPONSIBLE FOR ACCIDENTS/THEFT. ALL ANNOUNCEMENTS DAY OF SALE TAKE PRECEDENCE OVER ADS. Lunch on Grounds by Smoking J's BBQ
Auctioneers: Blake Kuesel, Donovan Yoder

Auctioneer's Note: We Are Expecting a Great Line Up of Equipment to Arrive As We Have a Line Started.

Widmer Auctioneering
Andy & Diana Widmer Phone: 641-660-9264
FACEBOOK: Widmer Auctioneering
WEB: www.widmerauctioneering.com
"LET OUR FAMILY HELP YOUR FAMILY WITH ALL YOUR AUCTION NEEDS"

Weekly Auctions

Thursdays • 5:45 PM

Wilson Auction Center - Main Street, Colo, IA
Early Bird Boxes Approx 5:15 PM.

Selling
Household • Estates • Antiques • Collectibles
Real Estate • Farm Machinery • Etc
"Service Minded w/Your Interest at Heart"
Check Website for Sale Dates, Updates & Many Pictures.
www.wilsonauctionservice.com
Doors Open Thurs 4:00 PM

Auction Conducted By:
Wilson Auction Service - Colo, IA
Auctioneer - Bob Wilson
Home Office 641-377-2755
Auction Center 641-377-2200 By Chance
Terms: Cash or Check-We Do Not Accept Credit Cards

OSBORN LIVESTOCK AUCTION

Located 7 miles West of Cameron on
HWY. 36, OSBORN, MO

Barn Phone: (816) 649-8485 (816) 695-0504

Transportation and Order Buying Available • Bonded • Insured

**FRI., APRIL 5TH AT NOON
REGULAR CATTLE SALE**

SALE EVERY FRIDAY

Top Cow-Rayville \$67. Top Bull - Maryville \$80.
Buying Butcher Cows and Horses Daily
We currently have 5 butcher cow buyers.
1423 Head of Butcher cows in last 5 weeks!

STEERS	ALL HEIFERS \$5-\$7 Higher than Previous Week
#433 \$1.86	Bred Heifers \$850-\$1175
#512 \$1.78	Young Pairs \$1350
#639 \$1.54	8 yr old bred-\$900-\$1000
#744 \$1.46	Older Bred \$550-\$770
#853 \$1.37	
#921 \$1.28	Longhorn & Dairy X \$.80-\$1.10

RECEIVING HOURS: Daily until sale time
Owner, Jayme Walker 816-665-4277
Randy Vanderkooi, Fieldman 816-632-0694
Ivan Kanak, Fieldman 816-724-1043
Frank Peterson, Fieldman 660-247-2306

PUBLIC AUCTION

APRIL 13TH, 2019 at 10:00 am

ALTISER AUCTION AND APPRAISAL
2705 MAIN ST. • UNIONVILLE, MO

Mowers/Shop: 2007 Huskee 54" riding mower with 23 HP Kohler, John Deere 325 48", very large sockets, several small storage bins, tool boxes, pliers, wrenches, new Dewalt drill, hand tools.

Antiques: Old toys, clocks and parts, trains, books, brief cases, apothecary jars, coffee grinder, Union Trust Bank erector set, plastic toy tractors, very large stamp collection with many from the 1800s, glassware to include opalescent, carnival, ruby red, milk, fountain pens, bullet pencils, antique cupboard, several 1960 Unionville Plat books, records, lamps, child's microscope, many antiques unadvertised.

Household: 2 window AC units, 2 sets newer large stereo speakers, new igloo dog house, nice drum set, step ladders, storage bins, books, brief cases, tool boxes full, magnifier work lamp, various pieces of 1960s and 70s furniture, file cabinets, lamps, dishes, houseware, knickknacks.

*Sale was taken on short notice. There will be a lot more items that are not advertised as we have not yet seen all items that will be selling.
Building will be full as usual.*

Preview on April 12th from 3 to 5. Sit down style auction in heated auction building. Can see photos at Altiser Auction Facebook page.

Terms on Personal Items ~ Registration w/proper ID prior to bidding. Cash, check w/ pictured ID. Nothing removed until settled for. Not responsible for theft, accident or inadvertent errors in advertising. Statements made day of sale take precedence over printed material. Food and restrooms available.

ALTISER AUCTION & APPRAISAL

KRIS ALTISER ~ 660-626-4960

MACHINERY / FARM EQUIPMENT AUCTION

SATURDAY, APRIL 13, 2019 • 9:00 AM

Location: Highway 5 South & Green St. Centerville, Iowa

Skidloader, Tractors: Like new Case 2016 TV380 Trac Skidloader (88 hours), Bucket & Cutting Edge Bar: 2000 271X Massey Ferguson Tractor, 2712000383, WE,D, with Buhler 595 Allied Loader; 55 Farmall Special 300 Tractor, WF, Rockford Clutch, TA, 20957 S; IH 1086 Tractor 2610181, WE,D, Cab, New Fuel Pump; JD 955 Tractor, Cab, 4x4, WF, #70 Loader; Case 2090 Tractor, D, WF, Power Shift, Weights, Duals, Field Ready; IH 756 Tractor, D, Fresh Overhaul, TA, Clutch= less than 100 hours; IH 756 Tractor, Gas, 6500 hours; 2016 Simplicity Legacy XL Mower Tractor, 25 HP Kohler, Diff. Lock, 61" Steel Deck, Under 225 Hours, Good Cond; 77 IH 1086 Tractor, D, WF, 138hp, 9300 hrs, #2610177U19881 dyno tested, Fall of 18—all new tires, rebuilt fuel pump, air serviced, fluids/filters, rear wheel seals replaced, new cab kit, ready to go.

Combine, Trailers, Farm Equipment: Gleaner F2 Combine w/ 4 Row 38" Corn Head, 13' Grain Head; IH 5500 3 pt 13' Chisel Plow; 1000 Gal Field Sprayer/60' Hyd Boom; JD 7000 4 Row Corn Planter (liquid fert., no till coulters, bean cups, monitor); N Idea 4 R Corn Planter, liq. Fert. & bean plates; JD 7000 Corn Planter 4 R fert. Boxes & beans; Hardi 60' Field Sprayer; Bradford Gravity Wagon /Corn; Shuler Silage Wagon; White 14' Disk; 3 Small Disks; JD 5 B Plow; 2=6 B. JD Plows; IH 550 Semi mt 5 B Plow; IH 45 Vibra Shank Field Cultivator/ Spring Tooth Harrow; 16' Gooseneck Flatbed Farm Trailer, new floor; 2015 5' x 10' Single Axle Utility Trailer; 6' x 12' bumper hitch Trailer, new treated floor; Triggs 16' Gooseneck Livestock Trailer; Bulk Bin; 13' NH 499 Hydra Swing Conditioner; JD 510 Rd Baler; 3 pt NH 457 Sickle Mower/extra sickles; 7' Buhler Farm King 750 Finish Mower; IH 8340 Mower Conditioner; Noble Harrow; Bush Hog Model 3210 Brush Cutter; JD 5' Brush Cutter, Trail type; NH Rake; 6 Bale Trailer; NH 352 Grinder/Mixer; Bale Forks; King Kutter 3 pt 6' Blade; Danuser Post Hole Digger; 9" & 12" Augers; NH 514 Manure Spreader; For-most 30 Cattle Chute; 2 Calif Grep Feeders; New Hayrack on Westendorf Gears; 3 pt Carry All; JD 14T Square Baler; 6' Western Snow Plow; 3pt JD 1500 Inner Seeder; Anderson 5th Wheel Receiver Hitch/Tri Pod; Bale Rings; Concrete Feeders; 9 Heavy Duty Corral Panels & Entrance Gate; Hedge Line & Corner Posts;

Golf Carts, Bucket Truck, Lawn & Garden, Tools & Misc: Yamaha G2 Golf Cart; Orange Elec Car; Elec Club Car Golf Cart; Yamaha Gas 4 Stroke Golf Cart, ready to go; 99 Club Car Golf Cart; 93 Chev 454 Bucket Truck (A28DTelsta Lift, Needs pump, truck runs good, G, loads of storage); Dixon 60" Commercial Mower; 42" Dixon Zeeter Mower; Kubota T380 23 hp Kohler Motor, 48" Steel Deck Mower; 42" Dixon Hydro Mower; Yard Machine 746SRL Mower, 48" Deck; Sears self Prop. Mower; Exmark 4417 zero turn Commercial Mower, 400 hrs, 44" deck, Kohler Engine; Worx Weedeater (extra Spools, Batteries, Charger; CI Dinner Bell; Buck Board Wagon Seat; M5 290 & M5 361 Stihl Chain Saws; 6 new Air Tools; Pittsburgh Hyd Cart; Lawn Mower or 4 Wheeler Lift; Delta Scroll Saw; Craftsman Radial Arm Saw; Chicago Power Tools Table Saw; Nice Campbell Hausfield 3 Piece Air Nailers Set; Craftsman all in 1 Cutting Tool; Hitachi Chop Saw; Karcher Power Washer; Drill Press; many more Tools and Garage Items.

THIS AD WRITTEN 2 WEEKS PRIOR TO AUCTION, MORE EQUIPMENT BY AUC. DATE.

Terms: Cash, Good Check, Credit Card (3% convenience fee) day of sale. No items removed until settled for.

All items sold As Is/Where Is Without Warranty Expressed or Implied.
Announcements Day of Sale take precedence over printed material.

DEMRY AUCTIONS, LLC

JANET DEMRY TOM DEMRY
641-895-4310 641-856-6408 641-895-2508
641-891-7258 Peggy/Kenny VandenBerg 641-891-1472
Junior Lawson 641-895-0037

**USED
DOUBLE-WIDE**
Amish Built Fortune,
Call For Info
573-249-3333
www.marktwainmobilehomes.com



DON'T FORGET!
Our Deadline for Display ads is Tuesdays at 5:00 PM
& Our Deadline for Classified Ads is Wednesdays at 12:00 PM

**2007 FLTRI
Road Glide**
DFT Trike Kit,
SE Air &
Mufflers,
Hwy Pegs,
40K Miles

**NO DOC
FEES!** **\$18,995**

G&C Cycle
Chariton, IA • 888-475-2243
www.cc-cycle.com

Virgil & Susanne Walden Moving Auction

80 SE 8th Avenue, Trenton, MO 64683

**10:00 a.m.
Saturday,
April 13, 2019**

As we have sold our farm and are moving to southern Missouri, we will sell the following at public auction at the farm located at 80 SE 8th Avenue, Trenton, MO 64683. **Directions:** From the Old Lake View Restaurant, go south on Iowa Blvd. to 80 SE 8th Avenue, directly south and east of Wright Memorial Hospital. **Follow auction signs posted on sale day.**



Tractor & Truck and Trailer & Farm Machinery

1995 GMC SLE 4x4 showing 112,400 actual mi 5.7 engine single cab long bed. Really nice, sharp, hard to find truck. **1980 Blair 16' bumper hitch stock trailer.** **Ford model 4000** showing 1650 hours wide front & front weights. All rubber is real good. Factory 3 pt tire size 16-9-30 & power steering, a real good tractor. Don't miss this one. **Massey Ferguson 3 bottom 3 pt plow** in excellent condition. **3 pt Cyclone tractor seeder, Huskee 3 pt 7' brush cutter,** real good.

Lawn & Garden & Shop Tools

Suzuki model 125 four-wheeler, runs good. J.D. model LA105 riding lawn mower 42" cut w/19-5 horse motor, real good. Pull type leaf rake, Poulan 42" riding lawn mower, Precise Fit yard pull type dump bed trailer, very large lot of lawn and garden hand tools, 16' & 32' working alum. ext. ladder, comealong, 2 wheel bench top 2 wheel grinder, 5" bench vice, log chain, one roll tie wire, pipe wrenches, monkey wrench, Wagoner 10.8 volt cordless drill w/box, Black & Decker cordless weed eater and chain saw w/charger/18 volt, Buffalo 25 pc. 1/2" socket set, Duracraft 40 pc. socket set, 9 pc. Craftsman open end wrench set, sm. bin organizer, red air bubble, Handiman jack, lawn mower ramps, 10 amp. battery charger, elec. cords, Hav-A-Hart live trap (nib), Magna Force portable air compressor, real good, push yard seeder & several hand sprayers, several push lawn mowers, Poulan Pro 295 chainsaw w/case, earthquake front tine garden tiller, real good, approx. 5 commercial metal racks, several yard ornaments & bird bath, 4' Aluminum ladder, Toro Electric leaf blower, moving dolly, Sunbeam gas grill, yard swing green shop built, 4" angle Dewalt grinder, QS-Pro wet & dry vac.

Household & Misc. & Patio Furniture

Several bookcases, 2 pillow sofa, chifferobe 8 drawer & 1 door, must see, very nice, Broyhill harvest table w/2 leaves & 6 chairs, seats 12, chairs sell separately from table, very nice, Bassett china hutch, kneehole 4 drawer w/flip top desk, very nice, walnut table & 4 chairs, washstand walnut w/double towel bar, really nice, stereo cabinet, 2 occasional chairs & 2 end tables, large lot of wooden shelves & hat rack, several wall mirrors, 3 pillow couch, glass inlaid coffee table, 2 swivel rocking chairs, 2 twin beds w/mattress, 2 full size beds & headboard, lots more kitchen cookware too numerous to list, 7 drawer kneehole desk, 4 drawer chest of drawers, walnut coffee table, dresser w/9 wooden drawers, sm. end table w/drawer, large lot bedding, over commode towel rack, Bro copier, several metal file cabinets, oak leather captains office chair, 2 oak magazine racks, sewing machine cabinet, 3 & 4 drawer chest of drawer, 2 card tables & chairs, 4 gun rack, woods sm. chest type deep freezer, Singer serger machine, redwood picnic table, nice table, wrought iron patio set, several patio chairs, large lot of greenery & holiday décor and Christmas village set, Whirlpool microwave, kitchen aid mixer, same as new, Rival crock pot, several cooking & baking dishes, set Corning ware cookware, several glass platters, Irg. assort of spices & pantry products, Irg. lot pic frames, canned food.

Antique - Primitives & Collectibles

Knife block, set Hull cookware, crystal & glass stemware, Irg. lot wooden baskets, red white and blue star bowl, 8 pc. stemware set, Roseville bowl #364-144, very nice, several quilts, winter scene painting in frame, very nice, several china bells, sm. cast iron pot, fireplace tools, wooden slat chair, wooden frame mirror oak & gold, very nice, 4 Carnival Fenton bicentennial plate collection, wooden mirror w/fancy engraving 24" x 36", adv. yard sticks, hall tree, child's wooden rocker, Irg. lot of green & clear fruit jars, canning and jelly jars, graniteware canner, McCoy pink pitcher, several Hull pottery pcs., old buttons, baseball bats, Dietze barn lantern, croquet set, blue enamel bucket, alum. & galvanized buckets, George Washington frame 1732-1932 centennial, fishing rods, and reels and tackle, pitching horseshoes, cast iron 3 legged kettle, old glass canister fire extinguisher, 8' wooden ladder, adult and child's wooden sled, owl coin bank. This is only a partial listing of what all sells. **Buildings are full.**

Auctioneer Note: The Waldens have sold the farm and are moving everything must sell to highest bidder. Bring a friend. Lots more too numerous to list. **Held rain or shine.**



Owners: Virgil & Susanne Walden

See our website for more pictures at RoppAuctions.com

Lunch by Power House

conducted by

Ropp Auctions

We bring high \$\$\$
bidders to our sellers.



Auctioneers: Norman Ropp and Terry Caldwell 660-247-1914

Porta pots on ground

FOR SALE: LP Tank on Wheels, \$650; Wobble Box-Gear Box for John Deere 1209 MoCo, \$250; 2-6 Bolt Vermeer Axles w/Brakes, \$200 Pair. 641-799-0200 4-5

FOR SALE: 9190 Deutz-Allis, MFWD, 10 Bolt Duals, All Firestone Radials at 75%, 3600 Actual One-Owner Hours, All Original, Excellent Condition, Fuel Efficient, No Smoke, 204HP, Good Quiet Cab w/ Air Ride Seat, \$25,000. Loren Martin. 660-341-1854 4-12

FOR SALE: 2009 Agco Gleaner 8R 30 Inch Cornhead. 641-777-1931 4-12

FOR SALE: JD 4650, MFD, Farmer Owned, Sharp Tractor, Field Ready. 641-208-0424 4-12

FOR SALE: Case IH 215 Tractor, 2865 Hrs With or Without Loader; Case IH 4800 32 Ft Field Cultivator. 660-748-5997 4-5

FOR SALE: New 3 Pt Tillers, Heavy Duty, Gear Driven, 7 Ft to 12 Ft, Starting at \$2,150. 660-874-4455 1-3

FOR SALE: Kuhn 7 Ft Disk Mower in Good Condition, \$1,950 or 3 Pt Sickle Mower on Trade. 641-572-0061 4-5

FOR SALE: 24 Ft x 5 Ft Free-Standing Cattle Panels, Weighing 600 Lbs Each, Fastener Chains Included. Located in Troy, IA. 641-680-0892 TFN

FOR SALE: New Heavy Iron Corral Panels, \$60, Free Replacement If Panel Gets Damaged. 816-507-3116 Or 816-898-0234 4-19

FOR SALE: JD 6R 7000 Planter, Liquid Fertilizer, No-Till, Coulters, Field Ready. 641-208-0424 4-12

FOR SALE: 2 Newer Style John Deere Cabs Off of a Self Propelled Windrower, Comparable to a Combine, \$750 Each; 3 Sets of Replacement Pallet Forks, \$250 Set; Gravity Box, No Gear, \$200. 641-799-0200 4-5

FOR SALE: Great 4x4 Farm Truck, 2003 Dodge 4 Dr 24V Cummins Motor, Near New Tires, New Turbo, Rollover Ball, No Rust, Great Interior, Asking \$9,250. 641-452-6656 4-12

FOR SALE: 2010 Chrysler Town & Country Touring, Excellent Shape, Drives Nice, Elderly Driven, Loaded w/Good Tires, Braun Handicap Rear Lift. 319-850-2384 4-12

Waterbeck Spray Foam LLC
General Contractor
Insulate: Houses, Foundations,
Roofs, Machine Sheds
Assorted Buildings

FREE ESTIMATES

1353 280th Street
Garwin, IA 50632
Office 641-499-2569
Cell 641-751-0626
Email: garwinacres2012@hotmail.com



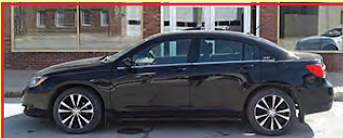
2018 Ford Expedition
4WD, White Platinum Tri-Coat, Heated & Cooled Seats, Navigation, Remote Start, Power Liftgate, Lots Of Options, 13K Miles
\$49,900



2014 Ford Explorer XLT
4WD, Heated Leather, 3rd Row Seat, Pwr Rear Hatch, T. Tow, 1-Owner Trade, 68K Miles
\$19,500



2014 Ford F250 Lariat
Crew Cab, 4x4, 6.7 Diesel, Spray In Liner, Remote Start, 5th Wheel Camper Hitch, New Tires, SHARP LOCAL TRADE! 63K Miles
\$39,900



2012 Chrysler 200
3.6 V6, Fully Equipped, Remote Start, 67K Miles
\$6,900



2007 Nissan Maxima
Heated Leather, Power Sunroof, Nicely Equipped, CLEAN LOCAL TRADE! Only 75K Miles
\$7,900



2007 Ford Fusion SE
Fully Equipped, Pwr Moonroof, New Tires, Only 84K Miles
\$5,995



Big Twins Starting at \$5,995
C&C Cycle
Chariton, IA • 888-475-2243
www.cc-cycle.com

FOR SALE: 2003 Dodge Cummins Diesel, Never Wrecked, Little Rust Over Rear Wheels, 6 Spd, \$5,000 of Extras Added When New, \$10,500 OBO.
507-625-7788 4-19

FOR SALE: 2004 Dodge 3500, Dual Rear Wheel, Reg Cab, Steel Flatbed, 6 Spd Manual, 4WD, \$9,500 OBO.
319-470-3255 4-5

FOR SALE: GM 6.2 Dielel Motor, Only 60K Miles, Runs Good.
641-208-0424 4-12

FOR SALE: 2002 Ford Sport Trac, 4x4, 4.0 6 Cyl, 181,000 Miles, Good Condition, \$3,000 OBO.
641-777-8521 4-5

FOR SALE: 1995 Peterbilt & 1995 Wilson Grain Trailer, Will Sell Separate.
641-895-8174 4-5

FOR SALE: Topper, Fits F250 Shortbox 1999-Present, Fiberglass, Black, 2 Sliding Windows, in Good Condition, \$950 OBO.
319-470-3255 4-5

FOR SALE: 2006 Dodge Caravan, Driven Regularly, Runs Good, Good Tires & Brakes, 160,838 Miles, Some Rust, \$2,500; 2007 Dodge Caravan, Good Tires & Brakes, Very Little Rust, 110,010 Miles, Everything Works, \$5,000 Or Offer.
515-669-2449 ETFN

ATTN TRUCK OWNERS: Rhino Linings Offers You The Worlds Number One Sprayed In Truck Bedliner. Also Works On Livestock Tanks, Creep Feeders, Horse Trailers, Etc. Call For An Appointment & More Info.
641-799-5672 TFN

Henry County, Iowa
LAND AUCTION
Sale to be held at the New London Community Center, 103 W. Washington St., New London, Iowa
223.39± TAKABLE ACRES 1 TRACT

THURSDAY, APRIL 11TH @ 10:00 A.M.

The Chapman Farm is located in Sections 21, 22 & 27, Baltimore Township, Henry County, Iowa. (6 miles south of New London, Iowa.)

Make plans now to attend this upcoming Henry County, Iowa land auction. This property features productive tillable farmland and attractive hardwood timber offering excellent hunting and recreational activities. This farm is improved with a 4-bedroom, 1,710 sq. ft. home, a newer 40' x 70' metal machine shed and several other usable outbuildings. If you are looking for a larger parcel of real estate with a home that is highly secluded, we urge you to take a look at this one.

DETAILS, MAPS & PHOTOS AVAILABLE ONLINE @:
www.SullivanAuctioneers.com

Russell P. & Terrie L. Chapman – Sellers
REPRESENTING ATTORNEY: R.L. (Dick) Fehseke, Jr. • Fehseke & Gray
1023 Ave G, Fort Madison, IA 52627 • Phone: (319) 372-7181

FOR INFO: Jeff Hoyer (319) 759-4320 or Jim Huff (319) 931-9292

SULLIVAN AUCTIONEERS, LLC • TOLL FREE (844) 847-2161
www.SullivanAuctioneers.com • IL Lic. #444000107

CHARITON FORD

Call Karl Stone • Mike Scieszinski
Toll Free: 1-866-283-8731 • CELL: 641-774-6735
Chariton, Iowa • www.charitonford.com

FOR SALE: Limousin & Limousin Flex Bulls, Black & Polled, Top A.I. Sires w/ Performance & Carcass APDs. Potters Limousins
Cell 641-436-7153
Home 641-658-2786 5-3

WE FILL SEMEN TANKS!!: All Beef Semen Sales, Nitrogen Sales, AI Supplies. Unlimited Genetics, Inc, Est 2001. Call Ryan.
641-226-1884 3-20

FOR SALE: 4 Yr Old Black Bull, Good on Heifers, Good Disposition, \$2,000.
641-777-8420 4-12

HOMANN FARMS: Offering Registered Red Angus Bulls For Sale. 2 Yr Old & 14 Month Old Yearlings by AI Sires 5L Independence & PaceSetter. Come See Us in Allerton, IA.
660-748-6188 4-12

ANGUS BULLS FOR SALE: Good Selection of Yearlings & 18 Month Olds, Nitrogen Data & EPD's. Coon Angus, Bethel, MO.
660-342-2705
or 660-284-6473 4-26

BULLS FOR LEASE: Over 70 Registered Angus & Hereford To Choose From. 90 Day Lease \$900. Trucking Available At Extra Charge. Kingdom City, MO.
573-999-3197 TFN

FOR SALE: Hereford Bulls, Yearling & 2 Yr Old Bulls, Pictures & Videos Available, Call or Text Brent Petersen.
563-357-9849 4-19

RED ANGUS YEARLING BULLS FOR SALE: A.I. Sired From the Breeds Top Bulls, \$1,500.
641-895-4526 4-12

FOR SALE: Purebred Polled Shorthorn Bulls. AAA Shorthorns, Hwy 81 Between Kahoka, MO & Farmington, IA.
319-572-2322 4-19

LIVESTOCK

FOR SALE: Registered Purebred Gelbvieh & Balancer Bulls, Black & Red Bulls Available, Born Dec 2017, Stout Bulls w/Excellent Dispositions. Rolling Hills Livestock, Bloomfield, IA.
641-777-7060 TFN

VEHICLES & EQUIPMENT AUCTION

200+ ITEMS SELL REGARDLESS OF PRICE!
WEDNESDAY, APRIL 10

G1639 '13 Kenworth T370
box truck

DG3907 '06 GMC C5500
flatbed truck

EZ9803 '94 Peterbilt 379
semi truck

EZ9823 '13 Dodge Ram 5500
Crew Cab utility truck

INVENTORY INCLUDES: SUVs, semi trucks, pickup trucks, tractors, equipment trailers, cable plows, campers, school buses, shuttle buses, flatbed trucks, utility trucks, utility vehicles and more. All items are sold "AS IS." 10% buyers premium applies. Aaron McKee TX License #16401. 866.608.9283

purple wave AUCTION

BID NOW! purplewave.com

Public Incoming Producing Property!
Friday Eve. April 19, 2019
6:00 p.m.
Sale to be held at:
119 N 11th St • Adel, Iowa

Daugherty Auction and Real Estate Services, Inc.
"We Sell it the Day You Need it Sold!"
50 YEARS
Find us on Facebook

General Description:
Offering at Public Auction this historic "Victorian" 2 story home conversion consisting of 5 apartments! With 2,322 sq. ft. total living area, this majestic home was built in 1895 and the original home of S.M. Leach, President of the Adel Bank at the time!

(2) 1 bedroom apartments are located on the first floor with (2) 1 bedroom apartments on second floor. An additional efficiency apartment with private entrance is located on the west side. Property is on a large corner lot just 1 block from downtown Adel and offers off-street parking! This income producing apartment house boasts 100% occupancy historically!

Lot size: 74.25 Frontage x 164' **Net Taxes:** \$3,056.00

Brief Legal Description: N74.25' E164' OL 8, Sect. 29 Twp 79 Range 27 **Zoning:** Residential

Auctioneer's Note: This Five family conversion is a great investment opportunity with a 100% occupancy historically! Call for current monthly income and expense info.

Daugherty Auction & Real Estate Services, LLC.
Chad Daugherty ~ Owner/Auctioneer • Kelly Daugherty ~ Auctioneer
North River Realty, Mike Bobst-Broker
Jamie Bergkamp-Closing Attorney
416 Greene St. Adel, IA (515) 993-4159 ~ d_auction@hotmail.com
See Us on the Web at **www.daughertyauction.com**

The information in this brochure is from sources deemed to be reliable but it cannot be guaranteed by Daugherty Auction and Real Estate Services, LLC.

Western Memorabilia Auction

Saturday April 13th, 2019 - 10:00 a.m.

Preview Fri. 4 - 6 p.m.

601 E. Shepherd Rd. Liberty, MO 64068

I-35 to Exit 20/North on 69 to Lightburne St./ South to Shepard Rd then East

Saddles and Saddle Bags

Collins and Morrison Omaha Nebraska Saddle #102
Antique Saddle in Perfect Condition
Stamped Keystone Honest Goods #14
Early Spanish 15in Seat, Monkey Nose Taps, Heavy Carved
Old Spanish 13in Loop Seat, Built in Saddle Bags, Monkey Nose Taps
N. Chas Castillo Long Beach California
Alfred Cornish Omaha Nebraska
Thomas Saddlery Co. Preston Idaho Hand Crafted Louis W. Main
Hand Crafted Saddle with Sterling Silver and Turquoise Stones
G.J. Jedlicka Santa Barbara California
RT Frasier Hair Saddle Bags
D.R.Rowland Camp Verde AZ Saddle Bags
Civilian Saddle Bags with a Hidden Interior Pouch

Bits (some over 2000 yrs. old)

Several Les Vogt Bits
Boone Silver Mounted Bit
Les Vogt Silver Mounted Bits
US Calvary Bit Mostly Original Finish
Old Calvary Bit
A Tietjen Silver Mounted Bit
E Garcia Sterling Inlayed
Garcia Made Elko NV #14598 Sterling Mounted
Les Garcia Sterling Mounted Ported Roller Bit
Stamped A. T. Early Made Bit
Bohlin Made Hollywood California Sterling
Les Garcia Sterling Inlayed
Gary Wiggins 2008 Sterling Overlay
Cheek Piece for a bit from Iran or Iraqi 4000 Yrs. Old
Lristan Bronze Bit from 800-200 BC Iran
Chinese Bronze Warring States War Bit over 2000 Yrs. old
Nose Band over 2000 Yrs. old
Chinese Han Dynasty Era Bit 1800+ Yrs. old
Chinese Bronze Bit from 400-220 BC over 2000 Yrs. old

Bridals-Headstalls-Breast Collars

Several Wide Cheek Headstalls
Rolled Leather Headstall with Ricardo Bit
Old Pocolena Headstall and Reins with Silver Bit
Parad Headstall Buermann Roller Bit
2 Bazells with Horse Hair Macate
Grecian Horse Bit and Headstall Approx. 200 A.D.
Kennedy Saddles Omaha Nebraska Headstall
Vogt Silver Mounted Headstall
Hamley and Co. Pendleton OR with Martin Gale

Guns

35 cal. Black Powder
44 cal. Black Powder
1857 60 cal. Frontiers Gun with Beaded Stock
Old Black Powder Rifle in Good Condition
Hubley Remington 36 Pistols and Holsters
Daisy 30-30 buffalo Bill Scout
Daisy Model 1894 Carbine Works Good
Schuetzen Civil War 1850 to 1860
Spencer Gun Co.
Iver Johnson Champion Gun
British War Henery Gun
Double Barrel 10 gauge Under Leaver Wells Fargo
Double Barrel Lower & Sons
1861 Colt 58 Percussion
1873 3220 Winchester Round Barrel Rifle

Spurs

Les Vogt Nickel Plated Spurs
Les Vogt Silver Mounted
C. Guerra Handmade Carson City NV
Burman Star Steel Silver
1974 Ken D Double Mounted Silver
2000 Ken Dunning Double Mounted Very Ornate
Jack Furgson Canon City Spur Company
Powder River Single Mounted
Silver Single Mounted Ornate Les Garcia
North and Judd Horse Head Ladies Spurs
Garcia Elko NV #14294 Sterling Mounted
E Garcia Single Mounted with Rams Heads on Shanks
Hall Galleg
North and Judd Very Ornate

Posters-Signs-Photos

Old Pendleton Photos
OC Seizer Picture
Railway Express Agency Sign
Metal San Pedro Railroad Sign
Very Old Southwest Print
1937 Spade Brand Ranch Smyer Tx
State Fair Rodeo Poster with Woman
Montana Frank Show Poster
F. Burkhard Saddle and Harness Man. Picture
Frederic Remington (1861-1909) Dismounted: The 4th Troopers Moving 1890
Two CM Russell Picture
Cattle of the World Tandy Leather Poster
JB Biebar & Sons Hereford Ranch Sign

Collectibles

Old Wool Blankets and Rugs
Lots of old Rosettes
Old Raw Hide Whips
N Porter Chaps
Several Old Catalogs
Bits and Spur Books
Old Vet Books
Large Set of Steer Horns
Old Wooden Horse Head
Brass Steer Head
Branding Iron
US Calvary Buttons
Three US Bit Medallions
Circus Trunk
Water Bag

Jewelry-Clothing-Accessories

14 Collectors Belt Buckles
Native American Moccasins
Early 1900s Native American Beaded Pouch
Early Beaded Moccasins/Kid size
Turquoise Jewelry
Sterling and Turquoise Rings
Turquoise buckles
Vintage Boots
Vintage Tony Lama Boots
Cowboy Cuffs

* This is a Partial Listing

For More Information & Pictures Visit Auctionzip.com

Statements Made Day of Sale Take Precedence Over All Written Matter.

Terms and Condition of Auction:

Cash or Check Out of State Buyer Must Have Letter of Credit

Norris Auction Service

417-296-3950

Reservations: Super 8 Motel 816-781-9400 or Sleep Inn 816-335-4402



2005
**Kawasaki 650
Brute Force
4x4, Agressive
Mudzilla Tires,
Plastic & Seat
Good, Clean!**

NO DOC FEES! **\$3,695**
C&C Cycle
Chariton, IA • 888-475-2243
www.cc-cycle.com

MISC

Lebeda Twin Mattress, First Quality, New in Plastic, Plush Quilted Top, Several Available, 80 Inches x 37 Inches x 8 Inches, \$125. Free Delivery to Surrounding Area. Credit Cards Accepted. 319-288-1112 4-12

FOR SALE: New Derksen 12x16 Ft Metal Shed, 2 Windows, Double Door, \$3,325 ro Rent to Own \$123.15/Month. 22 Trading Place, Hwy 22E., Centralia, MO. 573-682-7003 4-5

YODER'S INDIAN CREEK FURNITURE: Think Spring... Think Purple Martin...Poly Martin Houses, 16 & 24 Unit Gourd Racks, All Available w/Pole & Winch; Also Great Selection of Outdoor Poly Furniture & Fire Pits. 4 Miles North Of Cantril, IA, or 3/4 Miles South of Lebanon, IA on Rt V64. 22769 Route V64, Milton, IA. VM 319-538-7332 4-12

ART STUDIO CLEARANCE/GARAGE SALE: April 5-7, Friday 9-4, Saturday, 9-4, Sunday, 1-4. Easels, Art Supplies, Art Books, Matboard, Drawing Table, Frames, Craft Stuff, Many Original Paintings, Prints, Cards-Very Low Prices. Clothing, Women's Size 10, Men XXL. Boots, Shoes-Womens, Size 7, Men's 13. Dishes, Milk Glass Dishes, Books, Bath Vanity, Chairs, Schwinn Airdyne. Baughman-Lammert. 307 S. 2nd St. Pulaski, IA 52584 4-5

USED AMERICAN FAMILY DOUBLE-WIDE

These Do Not Last!
Excellent Condition, Call Quick!
573-499-9993
www.columbiadiscountshomes.net

Need Rebar?

Wholesale
AW Metal LLC
Metal Roofing Headquarters
641-664-3990
www.awmetal.net

HERVEY CONSTRUCTION:
Contact Us Today Concerning Any of Your Construction Needs! We Do Remodeling, Roofing, Drywalling, Siding, Decks & More! Email us at herv.consr@gmail.com or led_ap@hotmail.com. Call or Text Today!
641-451-5006 4-19
or 641-208-6513

FOR SALE: Jet 1HP Dust Collector; 30 Ft 3 Inch Galvanized Pipe; 7 Elbows; 3 T's; 4 Blast Gates; 10 Ft Flexible Hose; All for \$235. 319-397-2166 4-5

FOR SALE: Used Rear Tine Garden Tillers, All Sizes, Many Choices, Lots of Troy-Bilts & BCS's; Also DR & Billy Goat Walk Behind Brush Mowers. 660-216-1809 5-31

FOR SALE: Reel Caddy, New, Mobile Unit That Can Hold 4 Rows of Spools of Automotive Wire, Electricians Wire, Rope, Cable or Anything on a Spool, Has Storage Tray for Tools, 46 Inches Tall x 24 Inches Wide x 22 Inches Deep on 8 Inch Rubber Wheels, \$235. Manson, IA. 515-570-3617 4-5

FISH: For Pond Stocking, Delivered Free, Guaranteed. 855-374-5661 4-19



Edina, Missouri

Weekly Sales Start @ 12:30pm

April 5th-Special Feeder Calf Sale

April 12th-Special Feeder Calf Sale

April 19th - Special Cow Sale

- Miller
38 Hfr Pairs
- Jason Bischel
50 Hfr Pairs
- 25 Red/Red Angus
- 25 Blk Angus
37 5&6 yr Old Angus Pair
- w/Blk Calves by Side
- Caleb Shubert
Complete Dispersal
- 30 Bred Angus Cows

WATCH OUR SALES LIVE AT DVAUCTION.COM

To Consign For Any or All Sales or For All Information:

Owner - Kevin Strange • Cell: 660-341-9974

Ryan Strange • Cell: 660-341-9721

Sale Barn: 660-397-9999

Field Reps:

Bill Tom Hall 660-342-5420
Randy James 660-341-3066
Miike Bronestine 660-341-9965
Kenny Mayes 660-341-0121

SCOTT HUSKEY'S HOME SERVICE!: R-10 2 Inch Thick Insulated Skirting Systems. Check Out Our Lower Rates for 2018. Since 1972!
573-696-3468

or 573-296-0089 TFN

BAILEY FARMS: Bobcat Services, Trucking, Driveway Installs, Digging, Grading, Grading, Property Clean Up. New Virginia, IA.
515-720-0039 TFN

LEWIS COUNTY, MISSOURI LAND AUCTION

TUES., APRIL 30TH AT 5:00 P.M.

SALE TO BE HELD AT THE OAK HILL INN & SUITES | 1701 OAK ST. | CANTON, MO



136± ACRES • 2 TRACTS

Land is located approximately 4 miles northwest of Canton, MO in Sections 12 & 13, T62N-R7W, Lyon Township. Land represents productive tillable cropland, mature hardwood timber and offers outstanding northern Missouri whitetail deer & wild turkey hunting acreage.

DETAILS, MAPS & PHOTOS ONLINE @:

www.SullivanAuctioneers.com

Successors in Interest of James and Delora DeWitt, husband and wife

REPRESENTING ATTORNEYS:

Jules V. Decoster
DeCoster Law Office
105 E. Lafayette St.
Monticello, MO 63457

Tara L. Walker
TL Walker Law, LLC
1210 Oklahoma Ave.
Trenton, MO 64683

CLOSING & TITLE WORK:

Oak Hills Title Co.
307 Lewis St.
Canton, MO 63435
(573) 288-4461

AUCTION MANAGER: BILL FRETWELL (660) 341-7735

SULLIVAN AUCTIONEERS, LLC • TOLL FREE (844) 847-2161
www.SullivanAuctioneers.com • IL Lic. #444000107

Farm Retirement AUCTION

OPENS: MON., APRIL 8, 2019 / CLOSES: WED., APRIL 17 | 10AM
LOCATION: Steffes Group Facility, 24400 MN Hwy 22 South, Litchfield, MN 55355



2WD TRACTORS
 1979 John Deere 4440 2WD, 5,482 hrs.
 1980 Ford TW10 2WD, 8,079 hrs.
 1980 Ford 5600 2WD, 8,250 hrs.

HAY EQUIPMENT
 2000 New Holland 1431 mower conditioner, 13'
 1996 New Holland 644 round baler, 22,850 bales
 1977 John Deere 336 small square baler
 H&S inline rake, 9-wheel
 Inline rake, 5-wheel, 3 pt.
 Kuhn hay tedder
 King Kutter bale mover
 Flatbed hay rack, 18'x8'
 (2) Flatbed hay rack, 16'x8'

PICKUP
 2001 Chevrolet Silverado 3500 LS 1 ton dually, 129,807 miles

TRAILER
 2006 Felling FT-20 gooseneck flatbed trailer

SKID STEER LOADER & ATTACHMENT
 1997 New Holland 885 Turbo skid steer loader, 4,823 hrs. Maxilator AccumagrapplMAG-100WS" small square bale grapple
 Jenkins snow bucket, 96"
 (2) Notch bale mover
 Bale spear
 Shop-Built bale spear
 Pallet forks

OTHER EQUIPMENT
 Ryan Jr. UJR1 walk-behind sod cutter
 (7) Professional landscape rakes
 John Deere cultivator
 Shop-Built wood splitter

PREVIEW: Monday-Friday 8AM - 5PM
LOADOUT: Monday-Friday 8AM - 5PM

SHOP EQUIPMENT
 C-Aire II air compressor
 Shop press
 (2) Totes of 3" straps & ratchets
 (6) Load binders
 (5) Log chains, light duty
 (2) Log chains, heavy duty
 Tow rope

TIRES
 (4) Allied 12-16.5 skid steer loader tires, New
 (2) Goodyear 9.5-15 Load Range D tires
 (2) Goodyear 16.9-28 tires

PARTS
 (5) Top links
 3 pt. drawbar

SteffesGroup.com 

Steffes Group, Inc., 24400 MN Hwy 22 South, Litchfield, MN 55355 | 320.693.9371
DALE & BARB SCHEIBER | For information contact Dale 320.250.2990 or Randy Kath at Steffes Group, 320.693.9371 or 701.429.8894
 Complete terms, lot listings and photos at SteffesGroup.com / Randy Kath MN47-007

RED HOT DEALS

www.hawkeyetrader.com **APRIL**

NEW NEW NEW DISPLAY HOUSE!!!
 Call Marla to Hear What is New Inside
573-657-7040
www.chateauhomes.net

HUGE ESTATE AUCTION

Saturday, April 13, 2019 • 10 AM

Our New Location - Todd Crill Auctions

1447 Cromwell Rd., Creston, IA (west edge of town near the water tower)



AUCTIONEER COMMENTS: TCA is honored to have the estate auction for the late Marvin Hardisty. Marvin was a Senior IT Manager for Pioneer Hi-bred for over 30 years! Come help us celebrate Marv through his auction! This is also Grand Opening Weekend here at our new auction house. Bring your family and friends and come spend the day with us! Online bidding will be available at Proxibid/toddcrillauctions on select items. Hope to see you at the auction! - Todd

TRACTORS / SIDE BY SIDE / MOWERS / ACREAGE & POWER EQUIPMENT
 2012 John Deere 2720 4WD compact utility tractor, only 50 hrs, selling with John Deere 200CX loader, 3 cy diesel engine, hydrostat transmission. Marv bought new at JD in Indiana; Frontier BB2060 Standard Duty 5' box blade; 2016 Gravelly Atlas JSV 3000 4x4 utility vehicle, roll cage, roof, windshield, power steering, spray on bed-liner, 200 miles, model #99620. Marv bought new at CNM Outdoor in Indiana; 2018 PJ Trailer Mfg. Co. 13' single axle HD trailer GVWR 7,000#, bought new 9/17, very little use; 2009 Honda Foreman 4x4 4 wheeler model TRX500FE9, 404 miles, 265 hrs., w/warm 2500 lb capacity winch, Marv bought new; AlumalTD single axle aluminum cargo trailer; Gravelly ZT 60 HD zero-turn mower, 26 hp Kawasaki engine FR730V, 451 hrs, heavy deck, bought new; Prince 2600 psi trailer type log splitter w/5 hp Briggs Engine; Troybilt Pony Rear tire tiller w/5 hp Briggs; Troybilt CS4210 3" Chipper/shredder w/10 hp OHV engine; TracVac model 880 lawn sweeper 1350 Intek Series 305cc Briggs engine; small Mantis tiller; Toro SP 4 21" self propelled push mower w/159 cc engine; Honda Quadra Cut Harmony II HRR216 push mower; Billy Goat Industries KD510 chipper vac w/5.5hp quantum Briggs engine; Estate self propelled vacuum chipper; Husqvarna 145 BF backpack leaf blower; SMV Industries pull behind lawn sprayer w/booms; North Star 3000 psi pressure washer with Honda GX160 gas engine; Poulan ES 350 elec chain saw; Craftsman 16" gas chain saw; Stihl HT 131 pole saw; Stihl MS180C chainsaw 14" bar with case; Stihl MS193T 14" chainsaw; Stihl FS40C weed eater; Stihl BG56C gas powered leaf blower; Stihl FS85 gas weed eater; Stihl BT120C gas powered post auger w/8" auger; 5" Moose plow ATV blade; 3.5 hp Briggs transfer pump; Black & Decker large leaf vac; misc. sprayers; 2" rec basket hitch; new JD extra seat.

GUNS / SAFE / FISHING / SPORTING GOODS / BOATS
 Winchester model 9160 24 gun safe, digital lock, door organizer; Stevens M94 SS 410; 870 Remington Express 12 ga; Sport King High Standard .22 rifle; ECC 12 ga semi auto model #SX4053-12; Daisy 2002 air rifle; Gamo PT 80 airgun w/ laser; several Browning digital HD Pro Trail Cams; Hornak gun safe; Abu Garcia, Shakespeare, Zebco and other fishing rod & reels; many fillet knives; many tackle boxes (some full); fish finders; depth finders; 8" ice augers; Cabela's Stealth 3.0 hp Tecumseh engine power ice auger, near new; Minkota Eclura 34 lb thrust trolling motor; 5 animal live traps; dock float; turkey fryer; Mecco charcoal grill; Ranch 80,000 BTU heater; Purple Martin box with telescoping pole, NIB; Lacross Technology professional weather center NIB; Sears 12' flat bottom boat; Playmate 5 person paddle boat (2000).

SPECIAL MENTION: 24" cast iron bell from the Carl #10 Schoolhouse, Adams County, Iowa. Complete with no cracks or damage.

TOOLS
 Dewalt 18v cordless drill, drill bits and accessories; Milwaukee cordless screwdriver; Craftsman 16 gal wet/dry vac; Craftsman 5 hp 22 gal upright portable air compressor; Devibiss GB5000 gen power Briggs 10hp portable generator M-19F412; Performance CM 500L 1 hp 125 psi air compressor; Craftsman 16 gal 2 hp wet/dry vac; Craftsman 6" bench grinder on stand; Klutch 7" elec polisher NIB; Milwaukee 7 1/4" tilt-lok circular saw; Craftsman all-in-one cutting tool, NIB; Dewalt Saw-zall; Black & Decker 7amp power drill; Schumacher 10/40 starter/charger; 6 additional near new battery chargers; dual halogen work lights on stand; Waterloo top/bottom tool chest; Black & Decker 10" compound miter saw; Harper Appliance mower; comealongs; chain binders; slow moving sign; 12-15 fuel cans; Golden Road fence stretcher; log roller; creeper; manual steel post puller; post driver; log chairs; weed burner; Handiman jack; alum ramps; 20 ton hydraulic jack; drop cords; 9+ part organizers; sledges; axes; mauls; ratchet straps; socket sets; all varieties and selections of misc hand tools; hammers; saws; screwdrivers; wrench sets; pip wrenches; crescent wrenches; new rolls of hardware cloth; new roll of 6'x100 welded wire; Little Giant ladder system; 20' alum ext ladder; 28' Werner fiberglass ladder; Werner 6' fiberglass ladder.

NO-RESERVE RETIREMENT AUCTION

THURSDAY, APRIL 18TH @ 9:30 A.M.

AUCTION TO BE HELD ON-SITE:
 2346 E St. Hwy. 9/94, La Harpe, IL 61450



www.SullivanAuctioneers.com

NO-RESERVE RETIREMENT AUCTION

THURSDAY, APRIL 18TH @ 9:30 A.M.

AUCTION TO BE HELD ON-SITE:
 2346 E St. Hwy. 9/94, La Harpe, IL 61450

www.SullivanAuctioneers.com

HIGHLIGHTS INCLUDE: Challenger MT765C track tractor, 1,952 hours; JD8330 MFWD tractor, 3,168 hours; Challenger 55 track tractor, 5,804 hours; JD 6320 MFWD tractor, open station, loader, 5,000 hours; JD 4430 2wd tractor, 6,679 hours; Case-IH 2388 2wd combine, 3,504/2,499 hours; Case-IH 2208 corn head; Case-IH 1020 30' platform; Spra-Coupe 7650 self-propelled sprayer, 2,177 hours; Great Plains YP-1625A 32 row Twin-Row planter; Great Plains YP-625 12 row Twin-Row planter; Case-IH 1200 16 row 30' planter; Kuhn Krause 8000 30' Excelerator; M&W Earthmaster 1700 7-shank disk ripper; Blu-Jet AT3000 15-knife liquid applicator; Dalton Ag. M1370 1,700 gal. nurse trailer; FDS 6,000 gal. nurse trailer; HyGrade 1400 hyd. blade; Schulte XH1500 15' batwing mower; Richiger R1050 grain bagger; Richiger R950 grain bagger; Brent 1082 grain cart; J&M 875 grain cart; Ficklin CA13000 grain cart; '11 Peterbilt 384 day cab semi; '12 Timpte 40' hopper bottom trailer; '05 Cargo Mate 28' enclosed snow mobile trailer; JD1600 lawn mower; JD F725 lawn mower; Hustler 928614B lawn mower; '03 Porsche Boxster S convertible; '11 Polaris Ranger 800 XP UTV; '08 Honda Rebel motorcycle; '93 Honda Gold Wing SE motorcycle; (2) Yamaha FX Cruiser High Output wave runners; (2) Ski-Doo 550 snow mobiles; Shop tools and more!

TERRY & PATTI FERGUSON
 Terry Ferguson (319) 520-7128
AUCTION MANAGER: MATT SULLIVAN (309) 221-7001

SULLIVAN AUCTIONEERS, LLC • TOLL FREE (844) 847-2161
WWW.SULLIVANAUCTIONEERS.COM • LIC. #444000107

BID LIVE ONLINE!

ANTIQUE / PRIMITIVE
 Kellogg oak wall crank telephone; large Superior Drill Co. cider press; perfection heater; small hog oiler; Hog Joy hog oiler; barn pulleys; horse harness; Pepsi Vendorlator Mfg. Co. 10¢ pop machine; hand corn popper; oak clawfoot piano stool; Hillards Undertaking yardstick; pressed back youth highchair; oval cupid asleep picture; elec carriage clock; sanitary cheese preserver; misc Adams County towns books and memorabilia; Goebel Hummel music box; old sheet music 30-40's; Monarch upright piano with bench; Sears model 6450 doctors scale; brass washboard; misc cardboard advertising boxes; hand corn planter; husking pegs; chicken catcher; milk stool; chalk mark holder; wooden hall tree; dollies & pillowcases; baby clothes and blankets; several hand sewn old quilts (incredible condition old & clean); Serpentine oak commode; garden gate; wood barn doors; wood clothes rack; wood crates; copper boiler; treadle sewing machine; apple basket; egg basket; cast iron skillet; coal bucket; Corning cream can; granite wear; Delaval cream separator; small crocks; beater jar; pocket knives; tins; tobacco cans; Gold Elgin pocket watch; Waltham pocket watch; corn dryer; Jartop Dandy Butter churn; cow bell and kickers; 20+ misc belt buckles; over 30 Hesston belt buckles; Case centennial plow watch fob; advertising thermometer; 2 cast iron 26" pots; 2 whisky barrel planters.

P. BUCKLEY MOSS / MISC. PRINTS / WORLD ITEMS
 Living History Farms, Pioneer Girls, John Deere Girls, Our Carnegie Library (Osceola), Seeds of Life, Farmers Four, Pioneer Trio (also one unframed), John Deere Boy, John Deere Girl, John Deere Kids - All P. Buckley's framed except one; 1988-89 PF Zoellick - Winter ReFuge; Geo-Hyde Graphique Flat Globe Picture; J. Myers Walker signed watercolor; rural farm print; Terry Redlin "Evening with Friends"; Figurines; carved animals; shoes; table clothes; jewelry and other misc. treasures from work trips to Thailand, India, Africa and other countries!

APPLIANCES
 Sears Kenmore Elite refrigerator/freezer; Magic Chef 3.5 cu ft stainless apt. refrigerator; Sears Kenmore upright deep freeze; Black and Decker toaster oven; Sunbeam microwave.


ELECTRONICS
 Sony VCR; Pioneer 5 disc DVD; Pioneer DVD recorder; Sony 7.2 channel rec; Toshiba DVD recorder/VCR; Universal RF remote control items; Monster home theatre power regulator; Monster cables; slide scanner component web cam; misc. routers; coax; computer equipment; 5.1 Klipsch 4+ speaker tower surround sound system; Asus laptop computer

GLASSWARE
 Pyrex nest of bowls; Slovakian portrait vase; pattern glass; 20+ cup and saucer collection; pink depression bowl, open handled, plate; Shirley Temple bowl, 2 pitchers, cup and signed picture; England water pitcher and bowl

TRUCKS / SIDE BY SIDE / MOWERS / ACREAGE & POWER EQUIPMENT
 2012 John Deere 2720 4WD compact utility tractor, only 50 hrs, selling with John Deere 200CX loader, 3 cy diesel engine, hydrostat transmission. Marv bought new at JD in Indiana; Frontier BB2060 Standard Duty 5' box blade; 2016 Gravelly Atlas JSV 3000 4x4 utility vehicle, roll cage, roof, windshield, power steering, spray on bed-liner, 200 miles, model #99620. Marv bought new at CNM Outdoor in Indiana; 2018 PJ Trailer Mfg. Co. 13' single axle HD trailer GVWR 7,000#, bought new 9/17, very little use; 2009 Honda Foreman 4x4 4 wheeler model TRX500FE9, 404 miles, 265 hrs., w/warm 2500 lb capacity winch, Marv bought new; AlumalTD single axle aluminum cargo trailer; Gravelly ZT 60 HD zero-turn mower, 26 hp Kawasaki engine FR730V, 451 hrs, heavy deck, bought new; Prince 2600 psi trailer type log splitter w/5 hp Briggs Engine; Troybilt Pony Rear tire tiller w/5 hp Briggs; Troybilt CS4210 3" Chipper/shredder w/10 hp OHV engine; TracVac model 880 lawn sweeper 1350 Intek Series 305cc Briggs engine; small Mantis tiller; Toro SP 4 21" self propelled push mower w/159 cc engine; Honda Quadra Cut Harmony II HRR216 push mower; Billy Goat Industries KD510 chipper vac w/5.5hp quantum Briggs engine; Estate self propelled vacuum chipper; Husqvarna 145 BF backpack leaf blower; SMV Industries pull behind lawn sprayer w/booms; North Star 3000 psi pressure washer with Honda GX160 gas engine; Poulan ES 350 elec chain saw; Craftsman 16" gas chain saw; Stihl HT 131 pole saw; Stihl MS180C chainsaw 14" bar with case; Stihl MS193T 14" chainsaw; Stihl FS40C weed eater; Stihl BG56C gas powered leaf blower; Stihl FS85 gas weed eater; Stihl BT120C gas powered post auger w/8" auger; 5" Moose plow ATV blade; 3.5 hp Briggs transfer pump; Black & Decker large leaf vac; misc. sprayers; 2" rec basket hitch; new JD extra seat.

MARVIN HARDISTY ESTATE

Auction conducted by Todd Crill Auctions, Creston, Iowa
Todd Crill, Auctioneer - 712-621-1453
 Auctioneers: Matt Johnston • Nathan Ramsey
 Michelle Crill, Auction Coordinator - 641-745-9223
www.toddcrillauctions.com or follow us on facebook
 RESTROOM • LUNCH ON GROUNDS
 Terms: Cash or good check. Mastercard and Visa credit cards welcome.
 Live and Online Bidding at proxibid www.proxibid.com/toddcrillauctions

AUCTION

Sunday, April 14, 2019 @ 11:00 A.M.

Skate Pit - Marion County Fairgrounds • Knoxville, Iowa 50138

COLLECTIBLES: Fiesta Ware-Homer Laughlin, Kitchen Craft; Pyrex Bowls, Misc; Peggy Karr Dishes; Egg Shell Novelist; Westward Ho Kneeling Indian; Sleepy Eye Picture; Crocks; Antique Lamps; Stitching Pony; Bread Box; Cast Iron Statue; School Desk; Knoxville Panther Water Tower; 2 Seat Metal Bench; 30 gal Grease Barrels (Amoco/Standard); Cookie Jar; Old Miter Saw; Toy Tractor; Tooth Pick Holders Collection; Cast Iron Skillet; Wooden Box; Silver Ware w/Case; **Precious Moments Collections** Complete Sets/Groups/Misc (1978-2002) Over 1200 Pieces, Still in Boxes; Music Boxes; Sugar Town; Heavenly Daze; Sammy Circus; Birthday Train; Noah's Ark; Country Lane; Nativity Sets; Girl w/Puppies; Eskimos; 3 Monkeys; Buyer Exclusives; Disney VHS Tapes; Metal Kitchen Stools; 1:24 Mark Kinser Sprint Car; Coca Cola Trays; McDonald's Toys; **HOUSEHOLD:** Backslash Ceramic Tile; Floor Tile; Wooden Medicine Cabinet; TV Stand; Wicker Ware Casserole; Stoneware; Wooden Rolling Pins; Scale; Pyrex; Wooden Stool; China Hutch; Table w/4 Chairs, Leaf, Pads; Amana Glider Rocker; Walnut End Table; Lamp Table w/Magazine Rack; Chest of Drawers; Night Stands; 2 Cedar Chests; Sm Rocker/Chairs; **TOOLS:** 3M Polishing Pads; Wire Connectors; Air Compressor; Sm Elec Grinder; 6' Wooden Ladder; Metal Cabinets; Rotary Table; Rag Bins; Misc Hand & Elec Tools; Carts; **MISC:** Small Ironing Board; Christmas Tree; Yarn; Embroidery Thread, Embroidery Hoops; Cross Stitch misc; Child's Lunchbox; Art Pencil Set; Alarm Clock Radio; DVD Player; Picture Frames; Craft Items; Kid's Educational Items; Books; Cookbooks; Magnavox DVD Player; Oreck a Vacuum Bags; Pocket Knives; Cigar Boxes; Jewelry Box; Lock Box; Foot Bath; Purses; Computer Bag; Pictures; Big Foot Goose; Stereo w/Speakers; Cigarette Lighters; CD's; CD Players; Salt/Pepper Shakers; Paper Shredder; Green Dish Set; 36" Steel Door; Windows; 4 Wooden Folding Chairs; Kenmore Toaster; Doggy Step w/Cover; Sirius Pro Remote Training Collar.
See Website for Pictures & Full Salebill www.prestonsauctions.com.

Auctioneer: Bill Preston 641-891-3085
Clerk: Joan Preston

Terms: Cash, ID Required - Not responsible for accidents, theft or inadvertent errors in advertising.

Classifieds

Place Your Item At
www.hawkeyetrader.com

MACHINERY AUCTION

Saturday April 13 • 10:00 A.M.

LOCATION: 1698 224th Place, Tracy, Iowa
DIRECTIONS: 1-1/2 miles south of Harvey on 216th Place, go east 1/2 mile to 224th

FARM EQUIPMENT & VEHICLES: 1997 7740 Ford New Holland FWA 16 Spd Powershift, Westendorf Loader w/7' Bucket, Bale Spears & Loader Boom. 1978 Ford 5600 Diesel, 1945 JD B, JD Gator, 2013 16 Ft Bumper Hitch Trailer w/Beavertail, Ramps & Wench, 2007 Malibu, 2000 Buick Park Avenue, 2005 Chevy Silverado Ext Cab, Winpower PTO Generator 25K, Hustler Zero Turn Mower, Snapper LT 200, Big Ox 8 Ft 3 Pt Blade, Herd 3 Pt Seeder, 10' Bush Hog Mower, 7' Bush Hog Mower, Old 14 Ft Krause Disc, Old New Idea Spreader, Harrow, Antique Wooden Flair Wagon on Wooden Gear, 3 Pt Bale Mover, Misc Running Gears, 1,000 Gal Plastic Tank on a Cart, Plastic Water Tanks, Cattle Gates & Corral Panels, 8 Round Bales of Hay, Pile of Small Square Bales of Hay & Straw, 20 SS 70" Dry Hog Feeders, SS Nipple Waters, 8 Hog Slat Sections, Adjustable Heavy Duty Loading Chute.
TOOLS: A Frame w/Chain Hoist, Stihl 310 Chainsaw, Acetylene Torch, 12x16 Portable Cabin w/Wood Stove, Plus Buildings Full of Lumber, Old Windows, Plywood, Older Wooden Furniture, Iron Wheels, Chalkboard, Saddle & Misc Horse Tack, 4 Ft Post Windmill & Partial Head, Older 10'x20' Single Car Garage on Running Gear, Double Wall Culverts, Six 18-20 Ft Steel I Beams, 4 Portable Cement Lot Sections, Steel Posts, Barbed Wire, Forney Stick Welder, 30 Gal Air Compressor, Hand Crank Brunswick Record Player & Records, Plus More.

CONSIGNED BY NEIGHBORS: 1995 Ford 250 4c4 Camper Special 7.3 Dsl Motor, 2017 Jayco Jay Flite 19' Self Contained Camper e/Heat & Air Sleeps 4-5, Mulch Manager 1125 5 Shank Ripper, Clark Grain Drill, Cadwell Grain Cart.

NOTE: The Buildings Are Full, I Am Sure We Will Have Many Surprises When We Get Started.

Lunch on grounds.

Owners: **Carroll and Kathy Hoksbergen**
For information call: 641-780-2987

Sale Conducted by Tri County Auction
Terms of the sale are cash or a good check. Not responsible for any accidents.
Brad Veenstra, 641-780-4077 • Ray Veenstra, 641-793-2779
www.tricountyauction.com

Scotland County LIVESTOCK AUCTION

P.O. Box 111 • Hwy 15 North • Memphis, MO
660-465-7213 • Jerry & Barb Blomme
Grant Blomme • 660-341-0069 • Rodney Garman 660-216-4674

DAIRY SALE

Tuesday • April 9th • 10:30 AM

Starting @ 10:30 AM with springers, fresh cows, & open heifers. Followed by veal calves and steers.

3 Herd Dispersals

- 26 Hol fresh cows with 17 in first lactation and 6 hfr calves
- 90 Hol cows with 45 in 1st and 2nd lactation, 55 yrs of breeding
- 70 Hol herd with 35 fresh cows and 35 shortbred hfrs, 8 hol/jersey X

Also Selling

- 50 Hol open hfrs 200 to 500#
- 115 Hol open hfrs 500 to 750#
- 10 Hol Springers 1200#
- 12 Hol Springers 1300#
- 5 Hol Springers 1250#
- 15 Hol open hfrs 300 to 500#
- 80 Hol str 550#
- 25 Hol str 550#
- 15 Hol str 500#
- 35 Hol str 750#
- 25 Hol str 400#
- 20 Hol str 325#
- 15 Hol str 500#
- 30 Hol str 450#
- 18 Hol str 750#

www.scotlandcountylivestock.com

SCOTT HUSKEY'S HOME SERVICE!!: Insulated Skirting for Manufactured or Older Site Built Homes. Eliminates Frozen Water Lines & Cold Floors. Save 20 to 25% on Utility Costs. I Also Have an Uninsulated Heavy Duty Vinyl Skirting-Looks Great! Since 1972

BULK: Hardwood Mulch, Red or Black, \$36/Cu Yard, Natural \$30/Cu Yard; Top Soil, Compost, River Rock, Red Crushed Brick, Sand, Driveway Rock. Pick Up or Delivery. Bailey Farms, New Virginia, IA. 515-720-0039 TFN

573-696-3468 TFN



CHARLES & MARY FORD AUCTION

10:00 AM SATURDAY, MAY 4TH, 2019

Location: 4931 NE State Rte U, Hamilton, MO
North of Kingston or South of Hamilton on Hwy 13
Route U, then East Approximately 4 Miles to Site.

Truck - Backhoe - Trailers - Saddles/Tack - Farm Equipment - Livestock Equipment - Shop Equipment

The Following Personal Property Will be Offered At Auction.

Truck & Backhoe: 1995 Dodge, 2500 series, diesel, standard cab, 4x4, My-D Han-D 1000# auto feed box, and hydraulic bale spike; John Deere, Series 210 backhoe with 12" & 24" bucket working condition.

Trailers: 25' gooseneck flat bed with ramps; 24' gooseneck stock trailer (Blair, KS); Bumper hitch, dual wheel, 6 hay bale trailer; Fuel trailer, 2 wheel, 150 gallon tank with electric pump.

Saddles & Misc Tack: Saddles include: Billy Royal; (2) Veach; Lloyd Conners (Saddles are of high quality, one is custom made.); Large collection of antique bits; Horse blankets; Large selection of tack.

Farm Equipment: New Holland 9' #617 disc mower: Bairds HD, 3 pt, transport trailer; John Deere, 15' bat wing rotary mower Kewanee, 24' wing fold disc; 12' trail type chisel plow; Bush Hog post hole digger with 12" auger; 3pt, HD 6' roto tiller.

Livestock Equipment & Misc: 25 +/- corral panels; 200 +/- used steel post; Round bale feeder; Creep feeder; Poly 100 gal, pickup water tank.

Shop Equipment: Miller portable welder mounted on trailer with gas engine; Clark 130 EM wire welder; 6000w Industrial Plus generator; Welding accessories; Acetylene torch set with 2 wheeler; Several extra bottles; Quantum pressure washer; Floor jacks; Bottle jacks; Battery chargers; Sickle grinder; Bench grinder; 5" Vice & work bench; Table top drill press; 24" pipe wrench; Electric power tools; Space heater; Aluminum extension ladder; Large collection wrenches; sockets, standard and impact; bolt bin.

Many other items not listed.

TERMS: Cash or check with proper ID. Not responsible for accidents; thefts or errors in advertising. Any errors in this ad corrected at auction by announcement.

Bruce Cleveenger Real Estate & Auction Service
Braymer, MO — 816-718-9549
Contact: our office
cell: 816-718-9549
email: smhwatson@centurylink.net

NOW TAKING CONSIGNMENTS FOR OUR 10TH ANNUAL FARM EQUIPMENT AUCTION.

Saturday, April 27th, 2019

TRACTORS, COMBINES, FIELD EQUIPMENT, HAY EQUIPMENT, HARVEST EQUIPMENT, LIVESTOCK EQUIPMENT, LAWN & GARDEN, CARS, TRUCKS

Call early to get items on our sale bills and website
Sale Conducted by Pendroy Auctions LLC.

Location Junction of G6 & F70, 7 Miles West of Monroe

Contact Perry Pendroy @ 641-891-4276
or Mark Ayers @ 515-681-2335



Machinery Consignment Auction

Sat - April 13, 2019 • 8:30 a.m.

Located at Five Star Auction Site - 3 miles west of Riverside on Hwy 22.
Note: Select online bidding offered with Proxibid.com.


Tractors: '59 JD 730/3 pt, Gas; '57 JD 520 Gas; '78 JD 4240 cab/air, 8,089 Hrs; '79 JD 4840 cab/air, 20.8/42 tires, 11,000 Hrs; JD 2955 8,880 Hrs; Farmall H w/factory steel; '91 Case IH 5120 w/Quick loader, 6,888 Hrs; MF 492 3 pt, cab/air, 18.4/34 tires; Ford 9N w/belly sickle mower; **Skidloaders - Attachments:** '08 Case 450 2,900 Hrs, good rubber; '03 Gehl 4835 2,900 Hrs, w/tires/steel tracks; 6 1/2' material; 5 1/2' utility bucket; **Hay Equipment:** JD 567 Round Baler/twine only; Kuhn VB2160 Round Baler 4x5, 540 PTO; '07 9' Kuhn FC313 disc mower/flail conditioner, one owner; JD 260A 3 pt disc mower; M&W 3 pt disc mower; 8' Reese 3 pt drum mower/teeder; 9' Kuhn 700 disc mower; '06 Kuhn SR10, 10 wheel spd rake; 8' JD hay rake; Gehl 7 wheel rake; Donahue hyd-big round bale mover; Vermeer BP7000 bale processor, LH discharge, 1000 PTO; Degelman 3100 bale processor, RH discharge, 1000 PTO; Vermeer BP5000 Rebel, LH discharge, 1000 PTO; Kemco 252 pro bale inline wrapper; NH silo blower, 1000 PTO; Gehl 970 silage wagon; 8'x18' hayrack-10T gear; 8'x20' hayrack-8T gear; (2) 7 1/2'x16' hayrack-JD gear; (2) 7 1/2'x16' hayrack-Westendorf Gear; **Farm Equipment:** 18' Kewanee 1010 disc; 12' Krause disc; 11' IH disc; 14' Kewanee 750 disc w/narrow; 15' Kent 5315 soil finisher; 15' harrowqator; IH 540 16" 4R, semi mid plow; Ford 2-btm plow; JD 400 rotary hoe; JD 85 12R, 30" rear mt cult; JD 6R, FM cult; Orthman 6R, RM cult; Allis Chalmers 4R cult; JD 7000 6R, 30" planter; 10' Case drill w/grass seed attach; 60 bu metal flare box w/end gate seeder; '98 Geringhoff 6R, 30" corn head w/roto disc, JD mounts; Owatanna 95 grinder mixer; Knight TMR mixer; Knight 7712 slinger manure spreader; Brady 144 flail shredder; 110 bu grainovator w/2 compartments; 12" posthole digger; Steel fence posts; 3 pt fast hitch; 60' Fast 3 pt sprayer w/foam; 1,000 gal poly tank w/transfer pump; 1,000 RPM centrifugal pump; **Gravity Wagons:** (2) J&M 350 bu w/brakes; (2) J&M 350 bu w/o brakes; Kilbros 200 bu; (2) Parker 200 bu; **Augers:** Westfield 8'x60" auger; 6'x32" PTO auger; **Livestock Equipment:** 28 bu & 25 bu calf creep feeders; (4) 2T Schmidt hog feeders; 2 wheeled bale ring; 4'x10' bale feeder; 12' gates; Cattle wire panels; Hog wire panels; Hog gates; **Construction:** 33'-28'-24' trusses; (24) 45' high rib galv metal; Lots of New Lumber; **Pickups:** '97 Ford F350; '97 Chevy 1500 4WD, 193K; **Trailers:** '14 Diamond T 25' GN Flatbed w/ramps, 24,000 GVWR, good brakes & lights; Lamar 25' GN Flatbed w/ramps & pop up dovetail, 14,000 GVWR, winch, new brakes, good lights; NEW Alumina 6812H Bumper Hitch w/ramp, 2990 GVWR; NEW Force 80'x12' Bumper Hitch Dump Trailer, 12,000 GVWR; NEW Delco 7'x16' GN Livestock Trailer, 14,000 GVWR; 2 New Ford Receiver Hitches; **Lawn & Garden:** Exmark walk-behind w/60" deck; Ferris walk-behind w/60" deck, 550 hrs; Scag walk-behind w/61" deck, 150 hrs; Scag walk-behind w/52" deck; Simplicity zero-turn w/52" deck; White MTD Lawn-tractor w/36" deck; '17 Bradley walk-behind w/52" deck; JD Lawn-tractor spin-steer; JD 300 rider w/42" deck; Lawn Boy Z320 H zero-turn w/38" deck; Encore walk-behind, low hrs, 18HP w/48" deck; '95 Grasshopper 720K zero-turn w/61" deck; Grasshopper 321D zero-turn w/72" deck; **ATV:** '03 Kawasaki 250cc 4-wheeler; **Generators:** Tahoe 10,000w gas generator; Tahoe 7,000w dsl generator; NEW Powermate 5000w generator; **Shop Tools:** Bosch Double Bevel Glide Miter Saw w/ox Air Motor; Sockets, new wrenches, channel locks, drill bits; Misc Hardware; Many other shop tools; **Misc Items:** Air motor for bulk tank; Vanvetter 620 gal bulk tank; lots of doors, walk-through & rollup; (8) glass patio doors.

Order of Sale: 8:30 a.m. Hayrack items; 8:30 a.m. Farm Equipment; 9:00 a.m. Livestock Equipment; 10:00 a.m. Shop tools; 1:00 p.m. Lawn/Garden; 11:00 a.m. Online Items.

Auctioneers Note: Consignments accepted until April 11th, 5:00 p.m. Items must be removed from site by April 30th, 2019 or it becomes Auction Co. property.

Terms: Cash or Check w/proper ID. Not Responsible for accidents or theft. Announcements Day of Sale Take precedence over Advertising. Lunch on Site by Country Cookin.

Auctioneers:
Delmar Yoder 319-430-2711
Lonnie Miller 319-461-0019
Delwyn Hershberger 319-458-9125
Dan Hershberger • Dwight Duwa • Randy High
Company: Five Star Auction Services LLC
5starauction.com



FARM EQUIPMENT AUCTION
ESTATE OF ROBERT AND NATALIE SHIPMAN
1607 220TH • CORWITH, IA
SAT., APRIL 20TH – 9:00 AM
SHORT SELLING TIME! DON'T BE LATE!
OFFERING BOTH LIVE ONSITE AND LIVE WEBCAST BIDDING

TRACTORS: 2009 Case IH Magnum 275; Case IH 1084; Case IH 7130 (tractor only, loader sells separately); Case IH 5288 (needs work); 1968 IH, F656 / **LOADER:** Allied 895 (this loader is pictured on Case IH 7130) it will sell separately / **PLANTER:** Case IH 1200 / **COMBINE:** Case IH 1660, Axial-flow / **WAGONS:** Brett grain 644; Parker grain 605; Kilbros gravity; Auger wagon / **OTHER EQUIP:** Case IH Cultivator 527B; Case IH bean head 1020; Case IH disk; Auger; Case IH corn head; Rotary hoe; Chisel plow; Stalk cutter; Tractor duals wheels; Loftness 3 pt snowblower; Chainsaw; Box blade.

TERMS: Everything sells like is, as is, where is. Cash, Wire Transfer, Credit Card w/additional fee, or Letter of Credit from bank to guarantee check. NO ONSITE buyers' premium for onsite purchases. For webcast purchases a buyers' premium of 3% applies.

SEE OUR WEBSITE - www.hilpipre.com

HILPIPRE AUCTION CO.
 Waterloo, IA
 PH: 319-235-6007 or MERV'S CELL: 319-415-0816



Save Some Trees! Read The Paper Online!
www.hawkeyetrader.com

Large Antique & Collectible Auction
SATURDAY, APRIL 13TH AT 10:00 AM

AUCTION VENUE: 301 Pershing Drive, Brookfield, MO 64628
 Directly off of Hwy 36 Across from the Wright Funeral Home.
 Auction signs will be posted day of sale.

Antiques, Glassware, Collectibles

Beautiful oak sideboard; Oak secretary; Oak regulator clock; Oak wall telephone; Lyman Boomer original oil painting, Turkeys in the Fall, 1977; Walnut 3-piece dining set, hutch, server, table w/ 6 chairs; Eastlake parlor table; Washtub on stand; Milk can; Sewing machine base w/ iron grate top; Stone crocks, 10 gal Blue Ribbon, 2 gal. others, jugs, bowls; Wood bowl; Old games and toys, Tin Litho typewriter, pinball, lunchboxes, more; Books, children and many others; Kerosene lamps; Bracket lamp; Wooden vegetable crates; Kraut board; Quilt tops; Bradford plates; Chalk figures; Hug-Me China doll; Camel back trunk; Cast iron, Wagner, Griswold; Fenton glassware, bowls, bride baskets, more; Carnival glass, Indiana Glass Harvest Grape, Gold Iridescent Floral; Lots of buttons; Doilies; Glass jug; Store jars; Child wagon; Figurines; Picnic basket; Costume jewelry; Blow-molded Santa; Many more items not listed!



Furniture, Household, and Misc.

Tell City oak dining table w/ 6 chairs; Oak knee-hole desk; Beautiful oak China/Curio cabinet; La-Z-Boy recliners (2); Lift chair; Bedroom sets, 4-piece queen, 3-piece queen; Justice sofa and loveseat; Maytag Centennial washer-dryer set; Chest and upright deep freezer; Older refrigerator; 48", 32" Flatscreen TVs; Card table and matching chairs; Glider rocker; Sofa table; Occasional chairs; Coffee and end tables; GWTW lamps; Floor and table lamps; Curio cabinet; Char-broil grill; Kenwood stereo component set; Singer sewing machine and cabinet, material, supplies; Office chairs; Oak shelves; Pictures, frames; File cabinets; Coolers; World globes; Baskets; Very nice, clean household items.

Large run of clean kitchen appliances, pots, utensils, electrical; Silverware set; Cookbooks; Hand and dish towels; Bath towels; Linens; Bedding; Afghans; Pressure canners; Canning jars; Tupperware; Cake stands; Cast aluminum cookware; Panasonic microwave, stand; Bar stools; Many other items packed in boxes.

Tools, Lawnmower, and More

Camping chairs; Fishing equipment; Battery charger; Riding lawnmower; Run of tools including screwdrivers, Crescent wrenches, pliers, shovels, rakes, and many more hand, power tools; Lawn chairs; Garden hose; Shelving; Suitcases; Lots of Christmas and holiday decorations; Exercise equipment.



Auctioneers Note: This will be a very large, clean, one-day auction with many boxes that have been packed away for years. Plan to spend the day and check out this large collection. Lunch will be served by Uprooted Kitchen.

MILDRED BAILEY TRUST

DETAILS, PHOTOS, AND ADDITIONAL INFORMATION VISIT US ONLINE

www.TeterAuction.com AUCTION COMPANY

TETER AUCTION COMPANY • (660) 963-2461 • (660) 734-2111



New Harleys
4.59% For 54 Months
or 4.69% For 66 Months
And \$0 Down With
Qualified Credit!
Call Us Before You Buy!
NO DOC FEES!

G&C Cycle
Chariton, IA • 888-475-2243
www.cc-cycle.com

FOR SALE: Fisher & Paykel Washer (WA 3937G1) & Dryer (DE7027G1), 3 Yrs Old, 2 Yr Manufacturer Warranty. 660-341-3740 4-5

FOR SALE: Great Pryenees Puppies, 11 Wks Old, Great Guard Dogs, Working Parents w/Sheep, Bloomfield, IA. 641-799-2137 4-5

WE CAN FOAM IT! Spray Foam Insulation, Wall To Wall Savings, Free Estimates. Fox Valley Roofing. 319-677-6021 11-1

FOR SALE: AKC Welsh Corgi Puppies, Born Feb 4th, Had Shots, Have 4 Males, \$1,200. 660-988-1806 4-5

SPRAY FOAM INSULATION: We Spray Open & Closed Cell; Blow In Insulation Also Available. 660-988-6350 4-26

FOR SALE: Red & Blue Heeler Pups, Males, 4 Months Old, All Shots and Wormed, Starting to Work, \$125 Each. 641-328-4106 4-12

LOOKING TO LIQUIDATE OR DID YOU JUST INHERIT STUFF: Let Me Help. On-Site Tag Sale Services. Personal Property And Collectible Consultation. Also Seeking Baseball Cards, Furniture, Comic Books, The Unusual, And Anything Of Value. Before Throwing Out Your Potentially Valuable Items, Contact Me. CAGA Certified. Nathan Lilley. 573-253-4159 TFN

FOR SALE: Silver & Charcoal Lab Puppies, Full AKC Registration, Vet Checked & Certified w/All Shots at 8 Weeks, Both Parents Are Family Pets/Hunters & On Site, DOB 2/07/19. Call or Text. 319-759-1025 4-5

PUPPIES PUPPIES: We Want to Buy Your Puppies! Registered or Mixed Breeds. We Have Homes Waiting for Them! 573-784-9866 TFN

FOR SALE: Delta Electric Motor, 1 1/2HP, 12 Amp, 3450 RPM, \$40. 319-397-2166 4-5

FREE HEAT & WATER: Eliminate Monthly Heating Bills With Classic Wood Furnace. No Sunday Calls. 660-707-3866 TFN

REAL ESTATE

LINCOLN HOMES SPRING SALE! Quality Built Modular & Manufactured Home On Display. Factory Direct Prices With Free Set Up & Installation Within 100 Miles.

PETS

FOR SALE: One Tri-Color Mini Aussie, Male, Born, 12-1-18, \$250 OBO. 641-208-5308 4-5

Lincoln Homes
 Hwy 30
 Ogden, IA 50212
lincolnhomesia.com
 515-275-2717 4-5

LakeWood RV Sales & Rentals

EMAIL: lakewoodrv@att.net
www.lakewoodrvsales.com



\$16,500

2013 CRUISER FIFTH WHEEL
 Beautiful With 3 Slide-Outs, Kitchen Island & Fireplace, Comfy Recliners Perfect For The "Home Away From Home!" Come See It Today!

660-379-2763
 Downing, MO • No Sunday Calls!

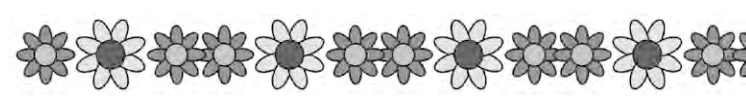
CONCRETE & CONSTRUCTION EQUIPMENT
TWO DAY - AUCTION
MULFORD CONCRETE, INC.
1312 IA HWY 3 • HAMPTON, IOWA
 OFFERING BOTH LIVE BIDDING and LIVE WEBCAST BIDDING
DAY 1: TUESDAY, APRIL 30 – 9:00 AM
SELLING ALL HEAVY EQUIPMENT, VEHICLES & TRAILERS
DAY 2: WEDNESDAY, MAY 1 – 9:00 AM
SELLING SHOP EQUIPMENT, SHOP TOOLS, OTHER LIKE SUPPORT ITEMS

FORMS / ACCESSORIES: (Approx 5000) EFCO Concrete forms; Rebar; Form cleaner; (Approx 200) Concrete blankets / **SKIDLOADERS:** 2002 Case 60XT; (9) Case 1845C: 1999, 2001, 2002 / **WHEEL LOADERS:** 1984 John Deere 644C; 2004 Hyundai HL740-7 / **MINI EXCAVATOR:** 2004 Takeuchi, model TB145 / **FORK-LIFTS:** (2) 2003 Terex long reach, model TH842C; 1996 JCB long reach, model 520 / **TRENCHER:** Vermeer, model T600 / **SCISSOR LIFTS:** (2) Skyjack, model SJ1113226, 24-26', elec, 30-36" wide; JLG, 40 RTS / **(13) TROWELS:** Including (4) Riding; (8) Walk behind; (1) Edger / **VIBRATORS / (6) WALK BEHIND CONCRETE SAWS / GROUND HEATERS / GENERATORS:** (5) Ground heaters: each w/a generator / **(2) GENERATORS:** MultiQuip generator, model DA-7000-SS / **(14) KEROSENE HEATERS:** DeWalt, Raynor, MagPro, ProTemp / **(7) LIGHT TOWERS:** Amida, Speciality Lighting, Ingersol-Rand, Allmand models / **SURVEY EQUIPMENT:** Total Station & tripod; Other like items / **(5) TRASH PUMPS:** Pacer, Wacker, MultiQuip, Koshin / **TRUCK TRACTORS:** Freightliners / **DUMP TRUCK:** Ford L8000 / **PICKUPS / TRAILERS:** Enclosed: Atlas; 2012 Aluma; **Utility:** Atlas Principal Builders; Hillsboro gooseneck, 35'; (2) JetCo, 53' drop deck; H&H; **Hauler:** (2) H&H; American Hauler; **Job Site:** Markline; (2) United enclosed, 24'; American job; Diamond job, model Cargo, 24'; **(4) Tool storage / (4) SHIPPING CONTAINERS / SHOP EQUIPMENT:** Qty of shop equipment and shop tools; Qty Cantilever racking; MUCH, MUCH, MORE!!!!

TERMS: Everything sells like is, as is, where is. Cash, Wire Transfer, Credit Card w/additional fee, or Letter of Credit from bank to guarantee check. Buyers Premium Applies: For onsite purchases 10% for Webcast purchases 13%.

SEE OUR WEBSITE - www.hilpipre.com

HILPIPRE AUCTION CO.
 Waterloo, IA
 PH: 319-235-6007 or MERV'S Cell: 319-415-0816

RETIREMENT MACHINERY AUCTION
SATURDAY, APRIL 13 • 10:00 AM

Located at: 528 Hwy 316 • Swan, IA
 (Hwy 92 & 5 north to Runnels turn)

Tractors: 2000 JD 7710 front-wheel-assist-740 JD loader quick-tach bucket & bale forks; 2000 JD 7210 front-wheel-assist PowerQuad 96HP, (both serviced at 150 hrs); 1978 JD 4640 -duals & new motor w/4000hrs. -extra front fuel tank & weights; 1978 JD 4440 w/cab weights & brackets; 1978 JD 4440 motor runs- needs rear-end work (all 3 serviced every 100hrs).

Loaders & Trucks: Komatsu 1994 WA 380 4x4 end-loader 100 hrs on new motor & new rear tires; Gehl 5640 diesel skidloader 86HP w/hyd quick-tach bucket & bale spear; 1991 Volvo tandem axle 17' dump truck-box-made to haul grain or silage; 1981 Ford 8000 tandem axle dump truck 3208 CAT engine & 17' grain/silage box; Ford 8000 tandem axle dump truck 3208 CAT w/8-spd & 15' grain/silage box; 1973 Ford 600 single axle gas 330 motor 5-spd w/16' grain/silage box.

Trailers: Barrett 1986 7'x20' alum Livestock gooseneck trailer; EZ-Haul Hay Handler - 6-bale gooseneck heavy axle trailer - brakes on one axle; Harvesthand 8-bale gooseneck trailer.

Hay Equipment: JD 566 round baler w/monitor; H&S 14-wheel hi-capacity rake, all new wheels last year; Kuhn 13' hydro-swing mower/conditioner; Case IH 13' hydro-swing mower/conditioner w/pivot hitch; 802 NDE vertical screw bale grinder; Highline bale processor; 3 pt Bale stabbers.

Field Equipment: Great Plain 1000 gal tank sprayer w/90' booms; Black Machine 12-row corn planter w/insecticide boxes; MF 10' chisel plow; Gehl 960 tandem axle silage wagon w/16' box; Kewanee #88 cultipacker 16', good condition, Self-contained 250 gal sprayer w/50' hose & Honda engine; JD 220 21' disk; IH 496 25' disk; White 226 24' field cultivator.

Farm Equipment: 150kw industrial generator powered by Isuzu 6 cyl diesel; Win-power 4535 PTO generator on trailer; New Holland 195 spreader w/hyd drive & gate; Artsway 5165 100 bushel grinder/mixer w/2 screens, hyd Raise & swing; 2 Danuser posthole diggers (18" auger & 12" auger); Truck hoist; 13-spd Eaton transmission; Many truck spare tires & rims; Tractor tire feeders; Powder River automatic head gate; Manual head gate; 8000 & 10000 gal Metal tanks; 2-7T bulk bins w/elec augers.

Auctioneer's note: "All sells to highest bidder, no reserves. Don't be late - no hayrack items. Positive ID or credit letter required to purchase equipment. Richard is retiring after 50 years running this family dairy. Equipment has been used, but serviced & well cared for."

Owner: Richard Taylor

*TERMS: CASH OR CHECK ONLY *LUNCH ON GROUNDS
 *ALL ANNOUNCEMENTS MADE DAY OF SALE TAKE PRECEDENCE OVER ADVERTISING
 *NOT RESPONSIBLE IN CASE OF ACCIDENTS OR THEFT.

SINNIF AUCTION SERVICE LLC
 J.D. Sinnif & TJ Sinnif - Auctioneers
 Call 641-799-3615
 Or check out sinnifauction.com and Sinnif Auction on Facebook

MOVING AUCTION

SATURDAY, APRIL 13TH, 2019 AT 11:00 A.M.

FAIRGROUNDS COMMUNITY BUILDING • WINTERSSET, IOWA

HOUSEHOLD: Lazy Boy couch & recliner; Oak kitchen table w/leaves & chairs; Complete full bed; Dressers; 2 pc pine cupboard; Three tall lighted Curio cabinets; Rocking chair; 2 lounge chairs; End tables; Nightstands; Small Vizio Flat screen TV; Cedar chest; 4 dr bookcase; Fans; Towels & washcloths; Sewing items; Step stool; Bedding; silverware; Small kitchen appliances; Pots & pans; Dried flowers; Floor lamps; Puzzles & games; Clocks; and more.

ANTIQUES & COLLECTIBLES: Several metal storage cabinets; Barber chair & pedestal sink; Square oak table; School desk; Oak commode w/towel bar; Over 50 old hood ornaments to include rare 1942 Oldsmobile, 1953 & 1954 Nash and others; 1927, 1933, 1941 Iowa license plates; Four 1936 Chevy artillery rims; 1 Cent Peanut machine; Complete 1956 De Soto car grill; Pair of spurs; Lionel & other trains; 5 Gal Union Birch leaf crock; 20 Gal Blue Ribbon crock; Several large acid bottles; Lots of shop and car manuals; Budweiser lighted display; Several hand-sewn quilts; Pyrex bowls; Chicken collection; Longaberger baskets; and more.

SPECIAL MENTION: 40+ Coach purses.

COINS: Morgan Silver Dollars...1883, 1889 BU & two 1921. One 1925 Peace Dollar; Seven Silver Mercury Dimes; Three Buffalo Nickels; 1887, 1888, 1883 & 1891 Indian Head Pennies; 1920, 1929, 1934, 1938, 1940, 1944, 1953 Wheat Pennies & one 1955 (Red copper); 1865 Two Cent Piece; Slabbed brilliant Bicentennial Kennedy Half Dollar.

TOOLS & OUTDOOR: Delta 16" bandsaw; Small toolbox w/tools; 10x50 binoculars; Concrete dog; 6 Shepherd hooks; Gazing ball; and more.



TERMS OF SALE: ID is required in order to receive bid numbers. We accept cash or good checks, no cards. We are not responsible in the case of accident or theft. Thank You. Lunch Served

HARTMAN AUCTIONEERING

Steve Hartman 515-468-7857 • 515-462-4584
www.hartmanauktioneer.com

PUTNEY AUCTION SERVICE

On-Line Auction; Tractor, Farm Equipment, Dozers & Construction Equipment

View Now & Bid @ www.putneyauction.com
WEDNESDAY, APRIL 17TH, 2019 AT 10:01 AM LOTS START SELLING
2612 W. 2nd Ave. (Hwy 92 West) • Indianola, IA 50125
www.putneyauction.com



We have moved into our NEW building on the very west side of Indianola!
Stop by & see what we have been working on!

Putney Auction Service

Mark Putney - Auctioneer
907 W 2nd Ave • Indianola, IA 50125
Cell 515-249-3676 • Office 515-961-4124

LIKE US on Facebook:
Putney Auction Service

View Photos online @
www.putneyauction.com
&
www.auctionzip.com

FOR SALE: 12 Acre Acreage w/3 Bedroom Ranch Home w/3 Car Garage & Shop, Also Numerous Buildings & a Pond, Close to Ottumwa, IA. Call Evenings.
641-661-2993

RECREATIONAL
FOR SALE: Kit Fox & Avid Airplanes Kits, Both New.
641-452-6656

FOR SALE: 4-Wheeler, Kawasaki 220 Bayou, Red w/ Camo Seat, Very Nice. Loren Martin.
660-341-1854

FOR SALE: 1996 Fisher 17 Ft Deep V Fishing Boat w/115HP Mercury Motor & Trolling Motor.
319-931-1312

AG RELATED
FOR SALE: 1st Cutting of 2018 Grass/Hay Mix, \$100 a Bale.
641-682-2518

FOR SALE: Krause Soil Finisher, 27 Ft, Model 6300 w/ Rolling Baskets.
641-777-1931

FOR SALE: 4 Grain Bins w/ Drying Floor; 1-8,000 Bushel, \$8,000; 2-6,000 Bushel, 1-\$5,500, 1-\$6,000; 1-3,600 Bushel, \$3,500; 5,000 Bushel Harvest Stor Grain Bin w/ Drying Floor, Great Condition, Buyer Responsible for Take Down & Moving Bins.
641-722-3300

FOR SALE: 1990 Deutz-Allis, MFWD, 10 Bolt Duals, All Firestone Radials at 75%, 3600 Actual One-Owner Hours, All Original, Excellent Condition, Fuel Efficient, No Smoke, 204HP, Good Quiet Cab w/ Air Ride Seat, \$25,000. Loren Martin.
660-341-1854

FOR SALE: JD 4850, MFD, Farmer Owned, A1 Condition, Field Ready.
641-208-0424

FOR SALE: 60 Inch Kubota BX Belly Mower, 3 Blades, \$750 OBO. Ask for Mike.
319-679-2420

SAM'S AUTO SALES

Mt. Pleasant, IA www.samsautosalesia.com 319-204-5214
NOT RESPONSIBLE FOR TYPOGRAPHICAL ERRORS

2018 KIA SPORTAGE LX
AWD, 4 Cyl, Auto, 17,539 Miles
READY TO GO
\$18,000

2010 CHEVY SILVERADO Z71
Crew Cab, 4x4, 5.3 Auto, 180K, Trade In
READY TO GO
\$12,300

2017 CHEVY MALIBU LT
16K Miles, 4 Cyl, Turbo, Auto
READY TO GO
\$13,200

2012 BUICK ENGLAVE PREMIUM
V6, Auto, AWD, 131K Miles
READY TO GO
\$12,800

2005 FREIGHTLINER CHASSIS X-LINE MOTORHOME CROSS COUNTRY
39K Miles, Diesel Pusher, Right Front Damage, Runs & Drives
AS IS \$33,500

2016 FORD F150 XL
4x4, Reg. Cab, V8, Auto, PW, PL, Tow Mirrors, Ladder Rack, Fuel Transfer Tank, Good Title, 1-Owner, High Miles
READY TO GO
\$12,000

2012 BUICK LACROSSE PREMIUM
V6, Auto, 57K Miles, Storm Damage, New Tires
READY TO GO
\$8800

2010 JEEP WRANGLER
V6, Auto, 4x4, Hard Top, 3" Lift, Newer Tires, LED Light Bar, LED Tail lights, 83K Miles
READY TO GO
\$14,950

2004 CHEVY COLORADO Z71
Crew Cab, 5 Cyl, Auto, Trade In
READY TO GO
\$5,500

2013 FORD EDGE SEL
V6, Auto, Loaded, Leather, AWD, 93K Miles, Trade In
READY TO GO
\$13,800

SAM'S BODY SHOP REPAIRABLES • NEW LONDON, IA

2018 GMC ACADIA SLE
AWD, 3rd Row Seat, Bags Good, 22K Miles, Left Side Damage
\$11,500 AS IS

2017 CHEVY MALIBU LT
4 Cyl, Turbo, Auto, 26K Mi, Front Hit Deer, Bags Good
\$8,000 AS IS

2018 GMC YUKON XL DENALI
6.2 Auto, 4x4, 20K Mi, Left Front Damage
AS IS \$31,000

2016 GMC CANYON SLE
Crew Cab, Leather, Loaded, 4x4, 34K Miles, V6, Auto
AS IS \$14,500

2015 CHEVY SILVERADO 2500HD
Crew Cab, Shortbed, V8 Auto, 4x4, Bags Good, 130K
\$13,500 AS IS

2013 CHEVY EQUINOX LT
FWD, 4 Cyl, Auto, 71K, Left Front Damage
\$4,000 AS IS

2010 CHEVY SILVERADO Z71
Half Ton, 4x4, 5.3 Auto, 62K Miles, Left Door & Rocker Damage, Runs & Drives
\$9,500 AS IS

2006 CHEVY SILVERADO K2500
Diesel, Auto, 173K, Bags Good, Front Damage
\$12,500 AS IS

2018 CHEVY SILVERADO K1500 LT
4 Dr, 5.3 Auto, 4x4, 2300 Miles, Front Damage, No Frame Damage
\$19,600 AS IS

2017 CHEVY EQUINOX LT
4 Cyl, FWD, 18K Miles, Light Left Front Damage
\$9,500 AS IS

2016 CHEVY 2500HD
4 Dr, 4x4, 6.0 Auto, 71K Miles, Front Damage, Bags Bad
\$14,500 AS IS

2014 CHEVY IMPALA LT LIMITED
48K Miles, Rear Damage, Lot Runs & Drives
\$5,800 AS IS

2013 BUICK ENGLAVE
V6 Auto, Leather, Loaded, 78K Miles, Bags Good, Rear Damage, Lot Runs & Drives
\$9,500 AS IS

BONNETT TRAILERS

SALES AND SERVICE

Stewartsville, MO
816-669-3794

www.bonnett-trailers.com



Trailer Mechanic on Duty

HAY TRAILER RENTAL \$100 a Day



2019 Hillsboro 24' Endura Livestock
 Vents Under Nose, Spare, Two Center Gates
\$18,600



2019 82"x20' (18+2) Bulldog Trailer ECH, Dove w/Slide In Ramps, 7K GVW
\$2,800



2019 Titan 6'8"x24' Gooseneck
 Vents, 2 Center Gates - One With 1/2 Slide, Spare, **\$11,500**



2019 Hillsboro 82"x18'
 Removable Fenders, 2 5/16, 7K GVW, 7'6"x12" Alum Ramps, 4-6000# Recessed D-Rings, LED, 20" Load Height, 15" Alum Wheels, Front Bump Rail Kit, **\$6,800** (Stock Photo)



2019 PJ T6 Gooseneck 22' (6+16)
 6" Channel Equipment Tilt, 2-7,000# Torsion Brake Axles, **\$7,300**



2019 82"x18' (16+2) Bulldog Trailer ECH, Dove w/Slide In Ramps, 7K GVW
\$2,650



2019 Titan 20' Equipment Trailer
 Stand Up Ramps, Spare **\$4,950**



2019 Doolittle 5x8 Enclosed
 Ramp Gate, Side Door, Single Axle, Dome w/Switch, LED, **\$2,900**



2019 Titan GN Flatbed
 14K, 26' Long, Dual Jacks & Chain Box, Wide Glide Ramps, **\$7,800**



2019 PJ (D3122) 72"x12', Bumper Pull, 2-5,200# Axles, Split Gate, Tarp Kit, 18" Side Extensions, Spare Mount & Tire, **\$6,950**



2019 Hillsboro Aluminum Single Axle Utility
 w/Aluminum Wheels
 78"x12' Bifold Gate **\$3,150**



2015 Maxy 83"x14', High Sides, Electric Brakes, Landscape Gate, Rear Ramp Gate, Aluminum Wheels, **\$2,100**



2019 Doolittle Gooseneck Dump
 Wireless Remote, Self Store Ramps, D Rings, LED Lights, Three Way Gate, Tarp, Dual Jacks, Chain Box & Spare
 82"x14' **\$8,950** • 82"x16' **\$9,400**



New 2019 PJ Dump 83x14
 DL Model, Low Pro, Tarp Kit, Spare Tire & Mount, 14K GVW, **\$7,950**



2019 Maxwell 83"x12', Aluminum Railed, Single Axle Utility Trailer, 15" Tires, 4' Aluminum Gate, **\$2,350**



2019 Doolittle Brute Force 26'
 14K, Mammoth Ramps **\$7,650**



New 2019 PJ (LD) GN Flatbed
 102"x25', Low Pro, Monster Ramps, 6" Spread Axle, 10K Duals, **\$10,900**



2018 Prostar 7x16' Enclosed Trailer
 80" Tall, Windbreaker Nose, 2 5/16 Ball Coupler, 7K GVW, Side Door, Ramp Door, **\$5,500**



2018 Barrett 24' Gooseneck w/Punch Side, 14 Ply Tires, Aluminum Wheels, Two Center Gates **\$19,400**



2019 Maxwell 6'x16' Gooseneck Brush Popper, Center Gate, 7K GVW, **\$5,900**



2019 Maxwell 16'x6', **\$4,850**
12'x6', **\$4,650**



2018 Ironstar 83.5"x16' Tandem Axle Utility, Self Store Ramps, 2" Coupler, **\$2,800**



New Redline Pasture Harrows
 24'-30' w/Hydraulic Fold



2005 Platinum Coach Stock Combo
 w/Nice Weekend Package, Awning & Several Other Options
\$18,900



2019 PJ TF 20' Bumper Pull
 2 5/16 Adj Coupler, Full Power Tilt, 2-7,000# Brake Axles, **\$6,700**



1978 Gooseneck 6'x18' Horse Trailer
 w/Front Tack, **\$1,750**



BESLER FLATBEDS IN STOCK
CARRY OUT Price Starting at \$2,950*
 *Installation Available for Additional Charge



Hillsboro Aluminum Flatbeds
 GN Hitch, LED Lights
 Full Wiring Harness



HydraBed by Triple C Mfg



2019 ProStar Windbreaker Enclosed 6'x12'x80", Single Axle, 15" Tires, Alum Wheels, Ramp Door, Side Door, Double Color, **\$3,750**



HMC Electric Feeder
 Chain Drive, Switch on Feeder & In Cab, Rain Shield on Feed Spout
1000# Feeder \$1,450



Continuous 6 Bar Fence Panels
 1 1/4" 14 Ga, 5/8 Solid Uprights
 Steel Posts
 Connectors



Hayliner Hay Trailers
 2 Brake Axles, 14 Ply Radials, LED



Ranch Hand Replacement Bumper & Grill Guard



10' Steel Bunk
 14 Gauge Steel Sheets
 w/11 Gage Legs, **\$225**

**BUY
 SELL
 TRADE**



ALL Types of Trailer Repair

