



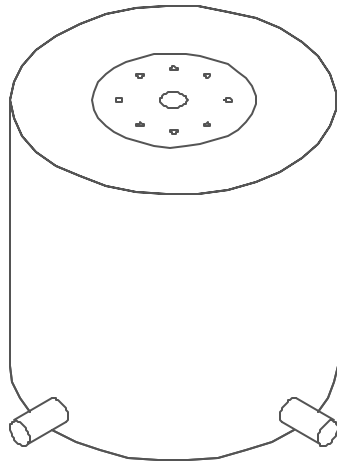
Lakelands Concrete Products, Inc.  
7520 East Main St., Lima, NY 14485  
Phone: 585-624-1990, Fax: 585-624-2102

Web: [www.lakelandsconcrete.com](http://www.lakelandsconcrete.com)  
E-mail: [sales@lakelandsconcrete.com](mailto:sales@lakelandsconcrete.com)

Date: 4/29/02

DWG: SP-ALC

Airport Lightcans  
24"Ø x 20"





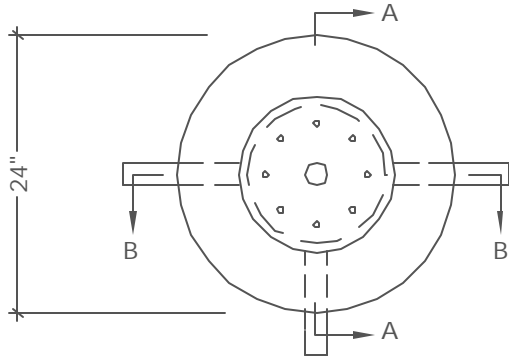
Lakelands Concrete Products, Inc.  
7520 East Main St., Lima, NY 14485  
Phone: 585-624-1990, Fax: 585-624-2102

Web: [www.lakelandsconcrete.com](http://www.lakelandsconcrete.com)  
E-mail: [sales@lakelandsconcrete.com](mailto:sales@lakelandsconcrete.com)

Date: 4/29/02

DWG: SP-ALC

Airport Lightcans  
24" Ø x 20"

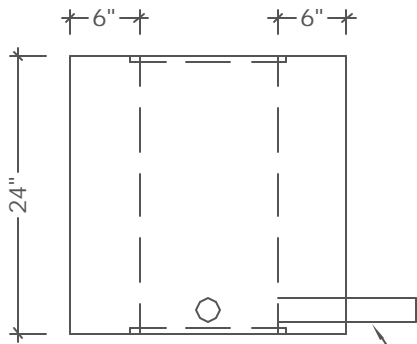


PLAN VIEW

Notes:

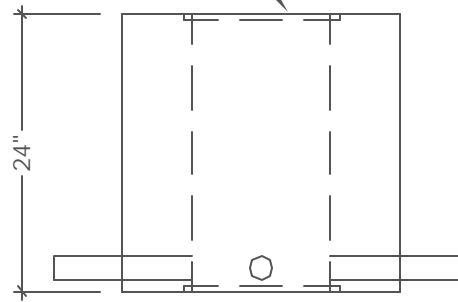
Concrete: 5000 psi @ 28 Days  
Entrained Air: 5% - 9%  
Reinforcing:  $f_y = 60,000$  psi,  
ASTM A615

Transformer Base F.A.A. Spec.  
L-867 12" Dia x 24" Deep



ELEVATION VIEW 'A'

Galvanized Lightcan  
Supplied By Contractor



ELEVATION VIEW 'B'

2" Ø RGS Conduit  
To Extend Past Precast

Weights: 936#