

LAYOUT SAMPLE

NO AMERICAN FLAG



**ID pouch added to right pocket**



**Additional X back reflective tape**

ITEM DETAILS

PRODUCT NAME

Sportex 6 Pocket Solid Vest with ID pouch and Zipper Closure

PART NUMBER

SPTX1192

ITEM COLOR

Orange

DESCRIPTION

100% polyester mesh material with solid polyester pockets.  
Zipper front closure.  
2" wide reflective material.  
Left chest mic tab.  
Two lower outside patch pockets with flaps.  
Right chest 2-division pocket.  
Left chest 4-division pocket.  
Two inside patch pockets.

Visit us online!  
**Click Here**

CONTACT DETAILS

FILE NAME // Balfour Beatty - Joyce Jones - SPTX1192 - JT32507  
ARTIST CONTACT // ArtDepartment@SportexApparel.com - Tyler B.  
SALES / PROCESSOR CONTACT // sales@sportexapparel.com // 1.800.486.8677

IN HOUSE USE

DECORATION METHOD // Screenprint

NOTE //

LAYOUT SHOWS CONCEPTUAL SIZING.  
ACTUAL DIMENSIONS LISTED ON SIZING  
SPEC PAGES



LAYOUT SAMPLE



ITEM DETAILS

**PRODUCT NAME**

**CLASS II 10 POCKET  
SURVEYOR'S VEST**

**PART NUMBER**

SPTXV1000

**ITEM COLOR**

ANSI LIME

**DESCRIPTION**

3M™ # 8906 2" Level II ANSI certified silver reflective with 600 candle power. Lightweight & cool, yet tough. All mesh background body material.

- + Left chest 2 level pen pocket.
- + Right chest pocket with flap.
- + 2 Lower pouch pockets with flaps.
- + Back map pocket on back bottom.
- + 4 Inside pockets.
- + Metal chest grommets
- + Canhold up to 50 Pounds of gear
- + Ergonomic sholder support
- + Dielectric zipper closure
- + All sizes including in tall

Visit us online!  
**Click Here**

CONTACT DETAILS

**FILE NAME //** Balfour Beatty - Jordan Webster - SPTXV1000-C2-C - JT30407  
**ARTIST CONTACT //** ArtDepartment@SportexApparel.com - Joseph T.  
**PHONE NUMBER //** 1.800.486.8677  
**SALES / PROCESSOR CONTACT //** Sales@sportexapparel.com

IN HOUSE USE

**DECORATION METHOD //** SCREENPRINT  
**DESIGN TIME //** .5  
**PROOF DATE //** 12/08/16

**NOTE //**

LAYOUT SHOWS CONCEPTUAL SIZING.  
ACTUAL DIMENSIONS LISTED ON SIZING  
SPEC PAGES





LAYOUT SAMPLE



ITEM DETAILS

**PRODUCT NAME**

**CLASS II 10 POCKET  
SURVEYOR'S VEST**

**PART NUMBER**

SPTXV1000-C2

**ITEM COLOR**

ROYAL

**DESCRIPTION**

3M™ # 8906 2" Level II ANSI certified silver reflective with 600 candle power. Lightweight & cool, yet tough. All mesh background body material.

- + Left chest 2 level pen pocket.
- + Right chest pocket with flap.
- + 2 Lower pouch pockets with flaps.
- + Back map pocket on back bottom.
- + 4 Inside pockets.
- + Metal chest grommets
- + Canhold up to 50 Pounds of gear
- + Ergonomic sholder support
- + Dielectric zipper closure
- + All sizes including in tall

CONTACT DETAILS

**FILE NAME //** Balfour Beatty - Jordan Webster - SPTXV1000-C2 - Royal - JT11987  
**ARTIST CONTACT //** ArtDepartment@SportexApparel.com - Patrick W.  
**PHONE NUMBER //** 1.800.486.8677  
**SALES / PROCESSOR CONTACT //** Sales@sportexapparel.com

IN HOUSE USE

**DECORATION METHOD //** SCREENPRINT  
**DESIGN TIME //** .5  
**PROOF DATE //** 00/00/00

Visit us online!  
**Click Here**

**NOTE //**

LAYOUT SHOWS CONCEPTUAL SIZING.  
ACTUAL DIMENSIONS LISTED ON SIZING  
SPEC PAGES



LAYOUT SAMPLE



ITEM DETAILS

**PRODUCT NAME**

**CLASS II 10 POCKET  
SURVEYOR'S VEST**

**PART NUMBER**

SPTXV1000

**ITEM COLOR**

ANSI RED

**DESCRIPTION**

3M™ # 8906 2" Level II ANSI certified silver reflective with 600 candle power. Lightweight & cool, yet tough. All mesh background body material.

- + Left chest 2 level pen pocket.
- + Right chest pocket with flap.
- + 2 Lower pouch pockets with flaps.
- + Back map pocket on back bottom.
- + 4 Inside pockets.
- + Metal chest grommets
- + Canhold up to 50 Pounds of gear
- + Ergonomic sholder support
- + Dielectric zipper closure
- + All sizes including in talls

Visit us online!  
**Click Here**

CONTACT DETAILS

**FILE NAME //** Balfour Beatty - Jordan Webster - SPTXV1000-C2 - JT12348  
**ARTIST CONTACT //** ArtDepartment@SportexApparel.com - Jack B.  
**PHONE NUMBER //** 1.800.486.8677  
**SALES / PROCESSOR CONTACT //** Sales@sportexapparel.com

IN HOUSE USE

**DECORATION METHOD //** SCREENPRINT  
**DESIGN TIME //** .5  
**PROOF DATE //** 12/05/16

**NOTE //**

LAYOUT SHOWS CONCEPTUAL SIZING.  
ACTUAL DIMENSIONS LISTED ON SIZING  
SPEC PAGES



LAYOUT SAMPLE



ITEM DETAILS

**PRODUCT NAME**

**CLASS II 10 POCKET  
SURVEYOR'S VEST**

**PART NUMBER**

SPTXV1000

**ITEM COLOR**

ANSI ORANGE

**DESCRIPTION**

3M™ # 8906 2" Level II ANSI certified silver reflective with 600 candle power. Lightweight & cool, yet tough. All mesh background body material.

- + Left chest 2 level pen pocket.
- + Right chest pocket with flap.
- + 2 Lower pouch pockets with flaps.
- + Back map pocket on back bottom.
- + 4 Inside pockets.
- + Metal chest grommets
- + Canhold up to 50 Pounds of gear
- + Ergonomic sholder support
- + Dielectric zipper closure
- + All sizes including in talls

CONTACT DETAILS

**FILE NAME //** Balfour Beatty - Jordan Webster - SPTXV1000-C2 - JT12348  
**ARTIST CONTACT //** ArtDepartment@SportexApparel.com - Jack B.  
**PHONE NUMBER //** 1.800.486.8677  
**SALES / PROCESSOR CONTACT //** Sales@sportexapparel.com

IN HOUSE USE

**DECORATION METHOD //** SCREENPRINT  
**DESIGN TIME //** .5  
**PROOF DATE //** 12/05/16

Visit us online!  
**Click Here**

**NOTE //**

LAYOUT SHOWS CONCEPTUAL SIZING.  
ACTUAL DIMENSIONS LISTED ON SIZING  
SPEC PAGES





LAYOUT SAMPLE



ITEM DETAILS

**PRODUCT NAME**

**CLASS II 10 POCKET  
SURVEYOR'S VEST**

**PART NUMBER**

SPTXV1000

**ITEM COLOR**

ANSI LIME

**DESCRIPTION**

3M™ # 8906 2" Level II ANSI certified silver reflective with 600 candle power. Lightweight & cool, yet tough. All mesh background body material.

- + Left chest 2 level pen pocket.
- + Right chest pocket with flap.
- + 2 Lower pouch pockets with flaps.
- + Back map pocket on back bottom.
- + 4 Inside pockets.
- + Metal chest grommets
- + Canhold up to 50 Pounds of gear
- + Ergonomic sholder support
- + Dielectric zipper closure
- + All sizes including in tall

CONTACT DETAILS

**FILE NAME //** Balfour Beatty - Jordan Webster - SPTXV1000-C2 - JT12348  
**ARTIST CONTACT //** ArtDepartment@SportexApparel.com - Jack B.  
**PHONE NUMBER //** 1.800.486.8677  
**SALES / PROCESSOR CONTACT //** Sales@sportexapparel.com

IN HOUSE USE

**DECORATION METHOD //** SCREENPRINT  
**DESIGN TIME //** .5  
**PROOF DATE //** 12/05/16

Visit us online!  
[Click Here](http://www.sportexsafety.com)

**NOTE //**

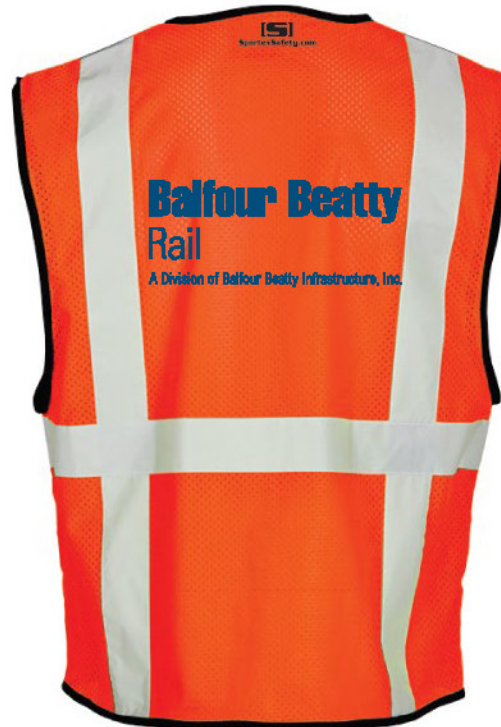
LAYOUT SHOWS CONCEPTUAL SIZING.  
 ACTUAL DIMENSIONS LISTED ON SIZING  
 SPEC PAGES

LAYOUT SAMPLE

ID pouch added to right pocket



Velcro closure



ITEM DETAILS

PRODUCT NAME

Sportex 6 Pocket Solid Vest with ID pouch and Velcro Closure

PART NUMBER

SPTX1192

ITEM COLOR

Orange

DESCRIPTION

100% polyester mesh material with solid polyester pockets.  
Zipper front closure.  
2" wide reflective material.  
Left chest mic tab.  
Two lower outside patch pockets with flaps.  
Right chest 2-division pocket.  
Left chest 4-division pocket.  
Two inside patch pockets.

Visit us online!  
**Click Here**

CONTACT DETAILS

FILE NAME // Balfour Beatty - Gloves and Vests RO 111616 - 12031  
ARTIST CONTACT // ArtDepartment@SportexApparel.com - Jules // 1.800.486.8677  
SALES / PROCESSOR CONTACT // sales@sportexapparel.com // 1.800.486.8677

IN HOUSE USE

DECORATION METHOD // Screenprint

NOTE //

LAYOUT SHOWS CONCEPTUAL SIZING.  
ACTUAL DIMENSIONS LISTED ON SIZING  
SPEC PAGES



LAYOUT SAMPLE

ITEM DETAILS



**PRODUCT NAME**

Class II  
ALL MESH CRAFT VEST

**PART NUMBER**

SPTXV2003-C2

**ITEM COLOR**

ANSI Orange

**DESCRIPTION**

2" Level II ANSI certified silver reflective with 600 candle power. Lightweight & cool, yet tough. All mesh ANSI background body material. All made from ANSI certified fabric.

- + Left chest cell phone pocket.
- + 2 Inside lower pouch pockets.
- + Right chest pen port pocket.
- + Dielectric zipper closure.

CONTACT DETAILS

FILE NAME // Balfour Beatty - Class 2 Orange Vests RO - 2-11-16 - 6369  
 ARTIST CONTACT // artdepartment@SportexApparel.com - Colton  
 PHONE NUMBER // 1.800.486.8677  
 SALES / PROCESSOR CONTACT // Processor@sportexapparel.com

IN HOUSE USE

DECORATION METHOD // SCREENPRINT  
 DESIGN TIME // .5  
 PROOF DATE // 00/00/00

Visit us online!  
**Click Here**

**NOTE //**

LAYOUT SHOWS CONCEPTUAL SIZING.  
 ACTUAL DIMENSIONS LISTED ON SIZING  
 SPEC PAGES





LAYOUT SAMPLE

ITEM DETAILS



**PRODUCT NAME**

Class II 5 Pocket  
Foreman's Vest

**PART NUMBER**

SPTXV500-C2

**ITEM COLOR**

ROYAL

**DESCRIPTION**

3M™ # 8906 2" Level II ANSI certified silver reflective with 600 candle power. Lightweight & cool, yet tough. All mesh ANSI background body material. All made from ANSI certified fabric.

- + Left chest 2 level pen pocket.
- + Right chest 3 section utility pocket.
- + 1 Lower Cargo Pocket with flap.
- + 2 Inside lower pouch pockets.
- + Canhold up to 50 Pounds of gear
- + Dielectric zipper closure
- + All sizes including in tall

Visit us online!  
[Click Here](http://www.sportexsafety.com)

CONTACT DETAILS

FILE NAME // Balfour Beatty - Butch Lollar - SPTXV500-C2 - 050715 - JT1774  
 ARTIST CONTACT // artdepartment@SportexApparel.com - Patrick W.  
 PHONE NUMBER // 1.800.486.8677  
 SALES / PROCESSOR CONTACT // PatrickMilne@sportexapparel.com

IN HOUSE USE

DECORATION METHOD // SCREENPRINT  
 DESIGN TIME // .5  
 PROOF DATE // 00/00/00

**NOTE //**

LAYOUT SHOWS CONCEPTUAL SIZING.  
 ACTUAL DIMENSIONS LISTED ON SIZING  
 SPEC PAGES



LAYOUT SAMPLE



ITEM DETAILS

**PRODUCT NAME**

**CLASS II  
6 POCKET SURVEYOR'S VEST  
with ID BADGE**

**PART NUMBER**

SPTXV600-C2-003

**ITEM COLOR**

ROYAL

**DESCRIPTION**

3M™ # 5510 2" Level II ANSI certified silver reflective with 600 candle power. Lightweight & cool, yet tough. All mesh background body material.

- + Left chest 2 level pen pocket.
- + Right chest pocket with flap.
- + 2 Lower pouch pockets with flaps.
- + Back map pocket on back bottom.
- + 1 Inside lower pocket.
- + Metal chest grommets
- + Canhold up to 50 Pounds of gear
- + Ergonomic sholder support
- + Dielectric zipper closure
- + All sizes including in tall

CONTACT DETAILS

**FILE NAME //** Balfour Beatty - Blue Vests iPad Storage - 7459  
**ARTIST CONTACT //** jessemonfore@SportexApparel.com  
**PHONE NUMBER //** 1.800.486.8677  
**SALES / PROCESSOR CONTACT //** MichelleManson@sportexapparel.com

IN HOUSE USE

**DECORATION METHOD //** SCREENPRINT  
**DESIGN TIME //** .5  
**PROOF DATE //** 00/00/00

Visit us online!  
**Click Here**

**NOTE //**

LAYOUT SHOWS CONCEPTUAL SIZING.  
ACTUAL DIMENSIONS LISTED ON SIZING  
SPEC PAGES



## LAYOUT SAMPLE



## ITEM DETAILS

## PRODUCT NAME

**LONG SLEEVE HYDROWICK  
T-SHIRT WITH CLASS II  
SEGMENTED TAPING**

## PART NUMBER

SPTXS735-C2

## ITEM COLOR

ORANGE

## DESCRIPTION

100% Polyester Circular Knit Fabric.  
3M™ # 5510 2" Scotchlite™ segmented  
reflective taping with 330 candle power.  
Made with moisture wick fabric that will  
keep you cool in the summer and warm  
in the winter by wicking moisture from  
your body to the outside of the fabric  
where it can evaporate.

## CONTACT DETAILS

**FILE NAME** // Balfour Beatty - Joyce Jones - SPTXS735-C2 - JT23978**ARTIST CONTACT** // ArtDepartment@SportexApparel.com - James R.**PHONE NUMBER** // 1.800.486.8677**SALES / PROCESSOR CONTACT** // Sales@sportexapparel.com

## IN HOUSE USE

**DECORATION METHOD** // SCREENPRINT**DESIGN TIME** // 2.5**PROOF DATE** // 00/00/00

Visit us online!

[Click Here](#)**NOTE** //

LAYOUT SHOWS CONCEPTUAL SIZING.  
ACTUAL DIMENSIONS LISTED ON SIZING  
SPEC PAGES





LAYOUT SAMPLE



ITEM DETAILS

**PRODUCT NAME**

**LONGSLEEVE HYDROWICK  
T-SHIRT WITH SEGMENTED  
TAPING**

**PART NUMBER**

SPTXS735-C2

**ITEM COLOR**

ORANGE

**DESCRIPTION**

100% Polyester Circular Knit Fabric.  
3M™ # 5510 2" Scotchlite™ segmented  
reflective taping with 330 candle power.  
Made with moisture wick fabric that will  
keep you cool in the summer and warm  
in the winter by wicking moisture from  
your body to the outside of the fabric  
where it can evaporate.

**CONTACT DETAILS**

**FILE NAME** // Balfour Beatty - Joyce Jones - SPTXS735-C2 - JT17397  
**ARTIST CONTACT** // ArtDepartment@SportexApparel.com - MICHELLE O.  
**PHONE NUMBER** // 1.800.486.8677  
**SALES / PROCESSOR CONTACT** // Sales@sportexapparel.com

**IN HOUSE USE**

**DECORATION METHOD** // SCREENPRINT  
**DESIGN TIME** // 2.5  
**PROOF DATE** // 00/00/00

Visit us online!  
[Click Here](http://www.sportexsafety.com)

**NOTE** //

LAYOUT SHOWS CONCEPTUAL SIZING.  
ACTUAL DIMENSIONS LISTED ON SIZING  
SPEC PAGES



LAYOUT SAMPLE



ITEM DETAILS

PRODUCT NAME

**HYDROWICK T-SHIRT WITH CLASS II SEGMENTED TAPING**

PART NUMBER

SPTXS705-C2

ITEM COLOR

ORANGE

DESCRIPTION

100% Polyester Circular Knit Fabric. 3M™ # 5510 2" Scotchlite™ segmented reflective taping with 330 candle power. Made with moisture wick fabric that will keep you cool in the summer and warm in the winter by wicking moisture from your body to the outside of the fabric where it can evaporate.

CONTACT DETAILS

FILE NAME // Balfour Beatty - Joyce Jones - SPTXS705-C2 - JT27186  
ARTIST CONTACT // ArtDepartment@SportexApparel.com - Weston M.  
PHONE NUMBER // 1.800.486.8677  
SALES / PROCESSOR CONTACT // Sales@sportexapparel.com

IN HOUSE USE

DECORATION METHOD // SCREENPRINT  
DESIGN TIME // 2.5  
PROOF DATE // 00/00/00

Visit us online!  
[Click Here](http://www.sportexsafety.com)

NOTE //

LAYOUT SHOWS CONCEPTUAL SIZING.  
ACTUAL DIMENSIONS LISTED ON SIZING SPEC PAGES



LAYOUT SAMPLE



ITEM DETAILS

**PRODUCT NAME**

**LONGSLEEVE HYDROWICK  
T-SHIRT WITH SEGMENTED  
TAPING**

**PART NUMBER**

SPTXS735-C2

**ITEM COLOR**

LIME

**DESCRIPTION**

100% Polyester Circular Knit Fabric.  
3M™ # 5510 2" Scotchlite™ segmented reflective taping with 330 candle power.  
Made with moisture wick fabric that will keep you cool in the summer and warm in the winter by wicking moisture from your body to the outside of the fabric where it can evaporate.

**CONTACT DETAILS**

**FILE NAME //** Balfour Beatty - Joyce Jones - SPTXS735-C2 - JT19005  
**ARTIST CONTACT //** ArtDepartment@SportexApparel.com - MICHELLE O.  
**PHONE NUMBER //** 1.800.486.8677  
**SALES / PROCESSOR CONTACT //** Sales@sportexapparel.com

**IN HOUSE USE**

**DECORATION METHOD //** SCREENPRINT  
**DESIGN TIME //** 2.5  
**PROOF DATE //** 00/00/00

Visit us online!  
[Click Here](http://www.sportexsafety.com)

**NOTE //**

LAYOUT SHOWS CONCEPTUAL SIZING.  
ACTUAL DIMENSIONS LISTED ON SIZING  
SPEC PAGES





LAYOUT SAMPLE



ITEM DETAILS

**PRODUCT NAME**

HYDROWICK T-SHIRT WITH  
CLASS II SEGMENTED TAPING

**PART NUMBER**

SPTXS705-C2

**ITEM COLOR**

LIME

**DESCRIPTION**

100% Polyester Circular Knit Fabric. 3M™ # 5510 2" Scotchlite™ segmented reflective taping with 330 candle power. Made with moisture wick fabric that will keep you cool in the summer and warm in the winter by wicking moisture from your body to the outside of the fabric where it can evaporate.

CONTACT DETAILS

FILE NAME // Balfour Beatty - Joyce Jones - SPTXS705-C2 - JT19005  
ARTIST CONTACT // ArtDepartment@SportexApparel.com - MICHELLE O.  
PHONE NUMBER // 1.800.486.8677  
SALES / PROCESSOR CONTACT // Sales@sportexapparel.com

IN HOUSE USE

DECORATION METHOD // SCREENPRINT  
DESIGN TIME // 2.5  
PROOF DATE // 00/00/00

Visit us online!  
[Click Here](http://www.sportexsafety.com)

**NOTE //**

LAYOUT SHOWS CONCEPTUAL SIZING.  
ACTUAL DIMENSIONS LISTED ON SIZING  
SPEC PAGES



LAYOUT SAMPLE



ITEM DETAILS

**PRODUCT NAME**

HYDROWICK T-SHIRT WITH CLASS II SEGMENTED TAPING

**PART NUMBER**

SPTXS705-C2

**ITEM COLOR**

LIME

**DESCRIPTION**

100% Polyester Circular Knit Fabric. 3M™ # 5510 2" Scotchlite™ segmented reflective taping with 330 candle power. Made with moisture wick fabric that will keep you cool in the summer and warm in the winter by wicking moisture from your body to the outside of the fabric where it can evaporate.

CONTACT DETAILS

FILE NAME // Balfour Beatty - Angela Davidson - SPTXS705-C2 - JT17471  
 ARTIST CONTACT // ArtDepartment@SportexApparel.com - Steffan  
 PHONE NUMBER // 1.800.486.8677  
 SALES / PROCESSOR CONTACT // Sales@sportexapparel.com

IN HOUSE USE

DECORATION METHOD // SCREENPRINT  
 DESIGN TIME // 2.5  
 PROOF DATE // 00/00/00

Visit us online!  
**Click Here**

**NOTE //**

LAYOUT SHOWS CONCEPTUAL SIZING.  
 ACTUAL DIMENSIONS LISTED ON SIZING SPEC PAGES



LAYOUT SAMPLE



ITEM DETAILS

**PRODUCT NAME**

**CLASS 2 PULL-OVER HOODED SWEATSHIRT**

**PART NUMBER**

SPTXO16002

**ITEM COLOR**

SAFETY ORANGE

**DESCRIPTION**

- 9.5 Oz. High quality heavy weight pre-shrunk fabric
- 80% cotton 20% polyester hooded sweatshirt
- Spandex in cuff and band with front muff pocket and matching drawstrings on double lined hood

CONTACT DETAILS

**FILE NAME //** Balfour Beatty Rail - Joyce Jones - SPTXO710-C2 - JT22028  
**ARTIST CONTACT //** ArtDepartment@SportexApparel.com - Zach B.  
**PHONE NUMBER //** 1.800.486.8677  
**SALES / PROCESSOR CONTACT //** Sales@sportexapparel.com

IN HOUSE USE

**DECORATION METHOD //** SCREENPRINT  
**DESIGN TIME //** .5  
**PROOF DATE //** 00/00/00

**NOTE //**

LAYOUT SHOWS CONCEPTUAL SIZING.  
 ACTUAL DIMENSIONS LISTED ON SIZING  
 SPEC PAGES





LAYOUT SAMPLE



ITEM DETAILS

**PRODUCT NAME**

**CLASS 2 PULL-OVER HOODED SWEATSHIRT**

**PART NUMBER**

SPTXO16002

**ITEM COLOR**

SAFETY YELLOW

**DESCRIPTION**

- 9.5 Oz. High quality heavy weight pre-shrunk fabric
- 80% cotton 20% polyester hooded sweatshirt
- Spandex in cuff and band with front muff pocket and matching drawstrings on double lined hood

CONTACT DETAILS

**FILE NAME //** Balfour Beatty Rail - Joyce Jones - SPTXO710-C2 - JT22028  
**ARTIST CONTACT //** ArtDepartment@SportexApparel.com - Artist  
**PHONE NUMBER //** 1.800.486.8677  
**SALES / PROCESSOR CONTACT //** Sales@sportexapparel.com

IN HOUSE USE

**DECORATION METHOD //** SCREENPRINT  
**DESIGN TIME //** .5  
**PROOF DATE //** 00/00/00

**NOTE //**

LAYOUT SHOWS CONCEPTUAL SIZING.  
 ACTUAL DIMENSIONS LISTED ON SIZING  
 SPEC PAGES

LAYOUT SAMPLE

ITEM DETAILS

PRODUCT NAME

**VEA-431-OB: Hi Vis Safety Jacket - Waterproof Hooded 2-Tone Parka**

PART NUMBER

SPTXVEA431-OB

ITEM COLOR

Orange/Black

DESCRIPTION

This High Visibility Jacket is an ANSI Class 3 compliant 2-Tone Orange Waterproof Parka. It is breathable, with a mesh liner and is made with a high visibility polyester shell and a hidden hi-collar hood. Two large front pockets and a cell phone pocket keep you organized. The parka extends to mid thigh length and the zipper extends up through the collar to keep you dry. Our VEA® brand (Visibility Enhanced Apparel) High Visibility Jacket features 3M™ Scotchlite™ Reflective Material.



**BACK**



**ADDITIONAL REFLECTIVE TAPING X BACK**

Visit us online  
[Click Here](#)

CONTACT DETAILS

FILE NAME // Balfour Beatty - Joyce Jones - SPTXVEA431-OB - 23985  
ARTIST CONTACT // ArtDepartment@SportexApparel.com - James R.  
SALES / PROCESSOR CONTACT // sales@sportexapparel.com // 1.800.486.8677

IN HOUSE USE

DECORATION METHOD // Screen Print/Emb

NOTE#

LAYOUT SHOWS CONCEPTUAL SIZING. ACTUAL DIMENSIONS LISTED ON SIZING SPEC PAGES

LAYOUT SAMPLE



ITEM DETAILS

PRODUCT NAME

**VEA-431-08: Hi Vis Safety Jacket - Waterproof Hooded 2-Tone Parka**

PART NUMBER

SPTXVEA431-08

ITEM COLOR

Orange/Black

DESCRIPTION

This High Visibility Jacket is an ANSI Class 3 compliant 2-Tone Orange Waterproof Parka. It is breathable, with a mesh liner and is made with a high visibility polyester shell and a hidden hi-collar hood. Two large front pockets and a cell phone pocket keep you organized. The parka extends to mid thigh length and the zipper extends up through the collar to keep you dry. Our VEA® brand (Visibility Enhanced Apparel) High Visibility Jacket features 3M™ Scotchlite™ Reflective Material.

Visit us online  
[Click Here](#)

CONTACT DETAILS

FILE NAME // Balfour Beatty - Joyce Jones - 11133  
ARTIST CONTACT // ArtDepartment@SportexApparel.com - Humber // 1.800.486.8677  
SALES / PROCESSOR CONTACT // sales@sportexapparel.com // 1.800.486.8677

IN HOUSE USE

DECORATION METHOD // Screen Print/Emb

NOTE

LAYOUT SHOWS CONCEPTUAL SIZING. ACTUAL DIMENSIONS LISTED ON SIZING SPEC PAGES



LAYOUT SAMPLE



ITEM DETAILS

PRODUCT NAME

**VEA-602-LB: Hi Vis Safety  
Sweatshirt - Hooded 10.5oz  
2-Tone Microfiber**

PART NUMBER

SPTXVEA602-OB

ITEM COLOR

Orange

DESCRIPTION

Our High Visibility ANSI III Compliant Visibility Enhanced Apparel (VEA®) Sweatshirts are 100% spun polyester microfiber fleece 2-tone Safety Lime Fluorescent and Black, weighing in at 10.5oz. The zip-hooded style has metal snaps so the hood can safely detach if snagged. It features a rugged YKK zipper, two pouch pockets for warming hands on chilly mornings, and 3M™ Scotchlite™ Reflective Material. You may wear the sweatshirt alone or zip it into the lining of the VEA-431 parka to form a waterproof systems jacket.

Visit us online!  
**Click Here**

CONTACT DETAILS

FILE NAME // Balfour Beatty - Joyce Jones - 11133

ARTIST CONTACT // ArtDepartment@SportexApparel.com - Hunter // 1.800.486.8677

SALES / PROCESSOR CONTACT // sales@sportexapparel.com // 1.800.486.8677

IN HOUSE USE

DECORATION METHOD // Screen Print / Emb

NOTE //

LAYOUT SHOWS CONCEPTUAL SIZING.  
ACTUAL DIMENSIONS LISTED ON SIZING  
SPEC PAGES

LAYOUT SAMPLE



ITEM DETAILS

PRODUCT NAME

**VEA-431-OB: Hi Vis Safety Jacket - Waterproof Hooded 2-Tone Parka**

PART NUMBER

SPTXVEA431-OB

ITEM COLOR

Orange/Black

DESCRIPTION

This High Visibility Jacket is an ANSI Class 3 compliant 2-Tone Orange Waterproof Parka. It is breathable, with a mesh liner and is made with a high visibility polyester shell and a hidden hi-collar hood. Two large front pockets and a cell phone pocket keep you organized. The parka extends to mid thigh length and the zipper extends up through the collar to keep you dry. Our VEA® brand (Visiblity Enhanced Apparel) High Visibility Jacket features 3M™ Scotchlite™ Reflective Material.

Visit us online  
[Click Here](#)

CONTACT DETAILS

FILE NAME // Balfour Beatty - Joyce Jones - Jacket - JT27 186

ARTIST CONTACT // ArtDepartment@SportexApparel.com - Westbrook, M.

SALES / PROCESSOR CONTACT // sales@sportexapparel.com // 1.800.486.8677

IN HOUSE USE

DECORATION METHOD // Emb

NOTE

LAYOUT SHOWS CONCEPTUAL SIZING. ACTUAL DIMENSIONS LISTED ON SIZING SPEC PAGES

LAYOUT SAMPLE



ITEM DETAILS

PRODUCT NAME

**VEA-602-LB: Hi Vis Safety  
Sweatshirt - Hooded 10.5oz  
2-Tone Microfiber**

PART NUMBER

SPTXVEA602-OB

ITEM COLOR

Orange

DESCRIPTION

Our High Visibility ANSI III Compliant Visibility Enhanced Apparel (VEA®) Sweatshirts are 100% spun polyester microfiber fleece 2-tone Safety Lime Fluorescent and Black, weighing in at 10.5oz. The zip-hooded style has metal snaps so the hood can safely detach if snagged. It features a rugged YKK zipper, two pouch pockets for warming hands on chilly mornings, and 3M™ Scotchlite™ Reflective Material. You may wear the sweatshirt alone or zip it into the lining of the VEA-431 parka to form a waterproof systems jacket.

Visit us online!  
**Click Here**

CONTACT DETAILS

FILE NAME // Balfour Beatty - Joyce Jones - Jackets - JT27186  
ARTIST CONTACT // ArtDepartment@SportexApparel.com - Weston M.  
SALES / PROCESSOR CONTACT // sales@sportexapparel.com // 1.800.486.8677

IN HOUSE USE

DECORATION METHOD // Emb

NOTE //

LAYOUT SHOWS CONCEPTUAL SIZING.  
ACTUAL DIMENSIONS LISTED ON SIZING  
SPEC PAGES



## LAYOUT SAMPLE

**BACK****ADDITIONAL REFLECTIVE  
TAPING X BACK**

## ITEM DETAILS

PRODUCT NAME

**CLASS 3 LONG RAINCOAT**

PART NUMBER

SPTXS163

ITEM COLOR

Orange

DESCRIPTION

ANSI 107 Class 3 100% polyester 150D oxford w/ PU coating. Zipper & snap front closure. 50" length. Mesh lining. Waterproof w/sealed seams. Detachable hood w/storage in collar. 2 exterior slash pocket w/rain guard. Vent holes in under arms.

Visit us online!

**Click Here**

## CONTACT DETAILS

FILE NAME // Balfour Beatty - Joyce Jones - SPTXS163 - JT23985

ARTIST CONTACT // ArtDepartment@SportexApparel.com - P at W.

SALES / PROCESSOR CONTACT // sales@sportexapparel.com // 1.800.486.8677

## IN HOUSE USE

DECORATION METHOD // Blank

## NOTE //

LAYOUT SHOWS CONCEPTUAL SIZING.  
ACTUAL DIMENSIONS LISTED ON SIZING  
SPEC PAGES

LAYOUT SAMPLE



**ITEM DETAILS**

PRODUCT NAME:

**THREE-IN-ONE  
DELUXE HI-VIZ  
BOMBER JACKET**

ITEM #: **SPTXJ3003-C3**

ITEM COLOR: **ANSI Lime**

ITEM DESCRIPTION:

Zip Out Removable Fleece Jacket with Lined Sleeves

2" Silver Reflective Tape

PU Coated Weather Proof Polyester Shell

Concealed Attached Hood

Black Elasticized Waistband

Black Elasticized Cuffs with Hook & Loop Closures

Zippered Fleece Lined Slash Pockets

Cell Phone / Radio Chest Pocket

Fleece Lined Chest Pocket with Zipper

Three Outside Pockets on Fleece Jacket

Clear Chest Badge Holder

Two Left Sleeve Pencil Pockets

Mic Tabs on Both Shoulders

**CONTACT DETAILS**

FILE NAME:

Balfour Beatty - David Acord -  
SPTXJ3003-C3 - JT20350

ARTIST CONTACT:

[ArtDepartment@SportexApparel.com](mailto:ArtDepartment@SportexApparel.com)  
**Eric J.**

SALES / PROCESSOR CONTACT:

[Sales@SportexApparel.com](mailto:Sales@SportexApparel.com)

DECORATION METHOD:

Embroidery

ITEM DETAILS

PRODUCT NAME:

**Classic Series Full Brim  
Hard Hat**

ITEM #: SPTX126-33HWHR1022W1

ITEM COLOR: White

ITEM DESCRIPTION:

Full brim offers increased protection from harmful UV rays, glare, splash and rain  
America's most popular full brim hat  
Your logo can be applied in any of eight different locations

CONTACT DETAILS

FILE NAME:

Balfour Beatty - Joyce Jones -  
SPTXBUL33HOR - JT35905

ARTIST CONTACT:

ArtDepartment@SportexApparel.com  
**Chris B.**

SALES / PROCESSOR CONTACT:

Sales@SportexApparel.com

DECORATION METHOD:

Digital

LAYOUT SAMPLE





LAYOUT SAMPLE



ITEM DETAILS

PRODUCT NAME:

American Custom Safety

ITEM #: SPTXBUL33HOR

ITEM COLOR: Orange

ITEM DESCRIPTION:

Full brim offers increased protection from harmful UV rays, glare, splash and rain  
America's most popular full brim hat  
Your logo can be applied in any of eight different locations

CONTACT DETAILS

FILE NAME:

Balfour Beatty - Joyce Jones -  
SPTXBUL33HOR - JT29120

ARTIST CONTACT:

ArtDepartment@SportexApparel.com  
**Liam R.**

SALES / PROCESSOR CONTACT:

Sales@SportexApparel.com

DECORATION METHOD:

Digital

LAYOUT SAMPLE



ITEM DETAILS

PRODUCT NAME

Sportex Large Premium Goatskin  
Utilized Drivers Gloves With Keystone  
Thumb, Slip-On Cut, Brown Hem And  
Shirred Elastic Back

PART NUMBER

SP TXRAD64D57485

ITEM COLOR

White/Brown

DESCRIPTION

Softness and enhanced dexterity of goatskin  
Shirred elastic back  
Color-Coded Bias Tape Hem For Easy Size  
Identification

Visit us online  
**Click Here**

CONTACT DETAILS

FILE NAME // Barber Beauty - Joyce Jones - GLOVES - JT18443  
ARTIST CONTACT // ArtDepartment@SportexApparel.com - Mark B.  
SALES / PROCESSOR CONTACT // sales@sportexapparel.com // 1.800.486.8677

IN HOUSE USE

DECORATION METHOD // N/A

NOTE #

LAYOUT SHOWS CONCEPTUAL SIZING.  
ACTUAL DIMENSIONS LISTED ON SIZING  
SPEC PAGES

## LAYOUT SAMPLE



## ITEM DETAILS

## PRODUCT NAME

Sportex X-Large Premium Goatskin  
Utility Drivers Gloves With Keystone  
Thumb, Slip-On Cuff, Blue Hem And  
Shirred Elastic Back

## PART NUMBER

SP TXRAD64D57486

## ITEM COLOR

White/Blue

## DESCRIPTION

Softness and enhanced dexterity of goatskin  
Shirred elastic back  
Color-Coded Bias Tape Hem For Easy Size  
Identification

Visit us online  
[Click Here](#)

## CONTACT DETAILS

FILE NAME // Barber Beauty - Joyce Jones - GLOVES - JT18443  
ARTIST CONTACT // ArtDepartment@SportexApparel.com - Mark B.  
SALES / PROCESSOR CONTACT // sales@sportexapparel.com // 1.800.486.8677

## IN HOUSE USE

DECORATION METHOD // N/A

## NOTE #

LAYOUT SHOWS CONCEPTUAL SIZING.  
ACTUAL DIMENSIONS LISTED ON SIZING  
SPEC PAGES



LAYOUT SAMPLE



ITEM DETAILS

PRODUCT NAME

Sportex Medium Premium Goatskin Utility Drivers Gloves With Keystone Thumb, Slip-On Cuff, Green Hem And Shined Elastic Back

PART NUMBER

SP TXRAD64D57484

ITEM COLOR

White/Green

DESCRIPTION

Softness and enhanced dexterity of goatskin  
Shined elastic back  
Color-Coded Bias Tape Hem For Easy Size Identification

Visit us online  
**Click Here**

CONTACT DETAILS

FILE NAME // Bahar Beauty - Gloves and Vests RO 111616 - 12031  
ARTIST CONTACT // ArtDepartment@SportexApparel.com - Jobs // 1.800.486.8677  
SALES / PROCESSOR CONTACT // sales@sportexapparel.com // 1.800.486.8677

IN HOUSE USE

DECORATION METHOD // N/A

NOTE #

LAYOUT SHOWS CONCEPTUAL SIZING.  
ACTUAL DIMENSIONS LISTED ON SIZING  
SPEC PAGES



**LAYOUT SAMPLE**



**ITEM DETAILS**

PRODUCT NAME

Radnor® Large Economy Grade Split Leather Palm  
Gloves With Safety Cuff, Striped Canvas Back And  
Reinforced Knuckle Strap, Pull Tab, Index Finger  
And Fingertips

PART NUMBER

SPTXRAD64057515

ITEM COLOR

Orange

DESCRIPTION

Radnor® economy grade split  
leather palm work gloves have a  
reinforced knuckle strap, pull  
tab, full index finger and finger-  
tips. This style features a striped  
canvas back with matching  
starched safety cuff.

Visit us online!  
**Click Here**

**CONTACT DETAILS**

**FILE NAME** // Balfour Beatty - Safety Gloves RO 1/11/16 - 5765  
**ARTIST CONTACT** // jessemonfore@SportexApparel.com  
**PHONE NUMBER** // 1.800.486.8677  
**SALES / PROCESSOR CONTACT** // sales@sportexapparel.com

**IN HOUSE USE**

**DECORATION METHOD** //

**NOTE** //

LAYOUT SHOWS CONCEPTUAL SIZING.  
ACTUAL DIMENSIONS LISTED ON SIZING  
SPEC PAGES

LAYOUT SAMPLE



DESIGN DETAILS

DES01162-004

LOCATION	LFP
DIMENSIONS	4.5"w
COLORS	● 301C



ITEM DETAILS

PRODUCT NAME	SPORTEX 50/50 HYDROWICK POLY ENHANCED VISIBILITY TEE
PART NUMBER	SPTXS14001
ITEM COLOR	Lime
DESCRIPTION	50% Polyester, 50% Cotton. Taped neck and shoulders, double-needle sleeve and bottom hems. Seamless collar. Quarter-turned to eliminate center crease.

DESIGN DETAILS

DES04362-001

LOCATION	Left Sleeve
DIMENSIONS	3-4.5"w
COLORS	● Black ○ White ● 301C ● 1795C ● 1235C



CONTACT DETAILS

FILE NAME // Balfour Beatty - 50 50 Tshirts - 6926  
 ARTIST CONTACT // ArtDepartment@SportexApparel.com - Steffan // 1.800.486.8677  
 SALES / PROCESSOR CONTACT // sales@sportexapparel.com // 1.800.486.8677

IN HOUSE USE

DECORATION METHOD // Screen Print

NOTE //

LAYOUT SHOWS CONCEPTUAL SIZING. ACTUAL DIMENSIONS LISTED ON SIZING SPEC PAGES

Visit us online!  
**Click Here**



LAYOUT SAMPLE



ITEM DETAILS

PRODUCT NAME

Sportex Essential T-Shirt

PART NUMBER

SPTXPC61

ITEM COLOR

Light Sand

DESCRIPTION

Heavyweight 6.1-ounce, 100% soft spun cotton  
98/2 cotton/poly (Ash)  
90/10 cotton/poly (Athletic Heather)  
50/50 cotton/poly (Dark Heather Grey)

Visit us online!  
**Click Here**

CONTACT DETAILS

FILE NAME // Balfour Beatty - JDRF Dice Run Tee's and Flyers - 8645  
ARTIST CONTACT // ArtDepartment@SportexApparel.com - Steffan // 1.800.486.8677  
SALES / PROCESSOR CONTACT // sales@sportexapparel.com // 1.800.486.8677

IN HOUSE USE

DECORATION METHOD // Screen Print

NOTE //

LAYOUT SHOWS CONCEPTUAL SIZING.  
ACTUAL DIMENSIONS LISTED ON SIZING  
SPEC PAGES



**LAYOUT SAMPLE**



**DESIGN DETAILS**

**LOCATION**

Left Sleeve

**DIMENSIONS**

3.5w"

**COLORS USED**

● Black



DES01692-002



**ITEM DETAILS**

**PRODUCT NAME**

**Ladies Heather Contender™  
Scoop Neck Tee**

**PART NUMBER**

SPTXLST360

**ITEM COLOR**

Graphite, Cobalt, True Navy

**DESCRIPTION**

Ultra breathability meets excellent heathered appearance at an equally great value.  
3.8-ounce, 100% polyester jersey  
Gently contoured silhouette  
Removable tag for comfort and relabeling  
Set-in sleeves

Visit us online!  
**Click Here**

**CONTACT DETAILS**

**FILE NAME //** Balfour Beatty Rail Nice Polos - 3389 - 02  
**ARTIST CONTACT //** ArtDepartment@SportexApparel.com - Andy  
**PHONE NUMBER //** 1.800.486.8677  
**SALES / PROCESSOR CONTACT //** sales@sportexapparel.com

**IN HOUSE USE**

**DECORATION METHOD //** Screen Print

**NOTE //**

LAYOUT SHOWS CONCEPTUAL SIZING.  
ACTUAL DIMENSIONS LISTED ON SIZING  
SPEC PAGES



LAYOUT SAMPLE



DESIGN DETAILS

LOCATION

Left Sleeve

DIMENSIONS

3.5w"

COLORS USED

● Light Grey



DES01692-002

ITEM DETAILS

PRODUCT NAME

Ladies Tri-Blend Lace Tee

PART NUMBER

SPTXDM441

ITEM COLOR

Grey Heather

DESCRIPTION

Lace insets elevate this heathered tee from ordinary to extraordinary.  
4.4-ounce, 50/38/12 poly/ring spun combed cotton/rayon, 30 singles  
80/20 cotton/poly back lace inset

Visit us online!  
**Click Here**

CONTACT DETAILS

FILE NAME // Balfour Beatty Rail Nice Polos - 3389 - 02  
ARTIST CONTACT // [ArtDepartment@SportexApparel.com](mailto:ArtDepartment@SportexApparel.com) - Andy  
PHONE NUMBER // 1.800.486.8677  
SALES / PROCESSOR CONTACT // [sales@sportexapparel.com](mailto:sales@sportexapparel.com)

IN HOUSE USE

DECORATION METHOD // Embroidery

NOTE //

LAYOUT SHOWS CONCEPTUAL SIZING.  
ACTUAL DIMENSIONS LISTED ON SIZING  
SPEC PAGES





**LAYOUT SAMPLE**



**DESIGN DETAILS**

**LOCATION**

LFC

**DIMENSIONS**

3.5w"

**COLORS USED**

● Lt Grey



DES01146-001

**ITEM DETAILS**

**PRODUCT NAME**

**Ladies Tri-Blend Lace Tee**

**PART NUMBER**

**SPTXDM441**

**ITEM COLOR**

Maritime Heather

**DESCRIPTION**

Lace insets elevate this heathered tee from ordinary to extraordinary.  
4.4-ounce, 50/38/12 poly/ring spun combed cotton/rayon, 30 singles  
80/20 cotton/poly back lace inset

Visit us online!  
**Click Here**

**CONTACT DETAILS**

**FILE NAME //** Balfour Beatty Rail Nice Polos - 3389  
**ARTIST CONTACT //** ArtDepartment@SportexApparel.com - Andy  
**PHONE NUMBER //** 1.800.486.8677  
**SALES / PROCESSOR CONTACT //** sales@sportexapparel.com

**IN HOUSE USE**

**DECORATION METHOD //** Embroidery

**NOTE //**

LAYOUT SHOWS CONCEPTUAL SIZING.  
ACTUAL DIMENSIONS LISTED ON SIZING  
SPEC PAGES



LAYOUT SAMPLE



ITEM DETAILS

PRODUCT NAME

Essential T-shirt

PART NUMBER

SPTXPC61

ITEM COLOR

Black

DESCRIPTION

A year-round essential, our best-selling t-shirt has been voted "most popular" by groups, teams, clubs and schools across America.  
Heavyweight 6.1-ounce, 100% soft spun cotton  
1x1 rib knit collar  
Shoulder-to-shoulder taping  
Coverseamed neck  
Double-needle sleeves and hem  
Ash is 98/2 cotton/poly  
Athletic Heather is 90/10 cotton/poly  
Dark Heather Grey is 50/50 cotton/poly

Visit us online!  
[Click Here](http://www.sportexsafety.com)

CONTACT DETAILS

FILE NAME // Balfour Beatty Rail - Cheryl Smith - JDRF - Donation T - 021815  
ARTIST CONTACT // ArtDepartment@SportexApparel.com - Andy  
PHONE NUMBER // 1.800.486.8677  
SALES / PROCESSOR CONTACT // sales@sportexapparel.com

IN HOUSE USE

DECORATION METHOD // Screen Print

NOTE //

LAYOUT SHOWS CONCEPTUAL SIZING.  
ACTUAL DIMENSIONS LISTED ON SIZING  
SPEC PAGES



**LAYOUT SAMPLE**



**DESIGN DETAILS**

**LOCATION**

Left Sleeve

**DIMENSIONS**

3.5w"

**COLORS USED**

● Dk Grey



DES01146-001

**ITEM DETAILS**

**PRODUCT NAME**

**Axle Polo**

**PART NUMBER**

**SPTXOG113**

**ITEM COLOR**

Blacktop

**DESCRIPTION**

Rebelliously cool, this polo has mad style with its two chest pockets and hidden snaps.  
5-ounce, 100% poly tricot with stay-cool wicking technology  
OGIO heat transfer label for tag-free comfort  
Self-fabric collar  
Contrast color placket and collar stand  
3-snap placket with 2 hidden snaps  
Front pockets with contrast color under flaps and O debossed metal snaps  
Set-in, open hem sleeves  
Woven OGIO badge on left sleeve

Visit us online!  
**Click Here**

**CONTACT DETAILS**

**FILE NAME //** Balfour Beatty Rail Nice Polos - 3389 - 02  
**ARTIST CONTACT //** ArtDepartment@SportexApparel.com - Andy  
**PHONE NUMBER //** 1.800.486.8677  
**SALES / PROCESSOR CONTACT //** sales@sportexapparel.com

**IN HOUSE USE**

**DECORATION METHOD //** Embroidery

**NOTE //**

LAYOUT SHOWS CONCEPTUAL SIZING.  
ACTUAL DIMENSIONS LISTED ON SIZING  
SPEC PAGES





LAYOUT SAMPLE



DESIGN DETAILS

LOCATION

Left Sleeve

DIMENSIONS

3.5w"

COLORS USED

● Black



DES01146-001

ITEM DETAILS

PRODUCT NAME

Elixir Polo

PART NUMBER

SPTXOG 116

ITEM COLOR

Petrol Grey

DESCRIPTION

Leave it to OGIO to stir up an intoxicating blend of street-ready style with high performance.  
4.3-ounce, 96/4 poly/spandex jersey with stay-cool wicking technology  
OGIO heat transfer label for tag-free comfort  
Self-fabric collar  
3-button, bias-cut placket with O debossed metal buttons  
Bias-cut shoulder and sleeve panels  
Bias-cut side vents  
Woven OGIO badge at hem

Visit us online!  
**Click Here**

CONTACT DETAILS

FILE NAME // Balfour Beatty Rail Nice Polos - 3389 - 02  
ARTIST CONTACT // ArtDepartment@SportexApparel.com - Andy  
PHONE NUMBER // 1.800.486.8677  
SALES / PROCESSOR CONTACT // sales@sportexapparel.com

IN HOUSE USE

DECORATION METHOD // Embroidery

NOTE //

LAYOUT SHOWS CONCEPTUAL SIZING.  
ACTUAL DIMENSIONS LISTED ON SIZING  
SPEC PAGES



**LAYOUT SAMPLE**



**DESIGN DETAILS**

**LOCATION**

Left Sleeve

**DIMENSIONS**

3.5w"

**COLORS USED**

● Stich Color



DES01146-001

**ITEM DETAILS**

**PRODUCT NAME**

**Linear Polo**

**PART NUMBER**

**SPTXOG1030**

**ITEM COLOR**

Blueprint

**DESCRIPTION**

A subtle, textured stripe gives this polo individual style, while a strong dose of stretch adds easy movement.  
5.2-ounce, 90/10 poly/spandex stripe jersey with stay-cool wicking technology  
OGIO heat transfer label for tag-free comfort  
2-piece self-fabric collar  
3-snap placket with O debossed metal snaps  
Cross-grain shoulder and sleeve panels  
Rubber heat transfer OGIO badge on left sleeve  
Side vents  
Double-needle sleeves and hem

Visit us online!  
**Click Here**

**CONTACT DETAILS**

**FILE NAME //** Balfour Beatty Rail Nice Polos - 3389 - 02  
**ARTIST CONTACT //** ArtDepartment@SportexApparel.com - Andy  
**PHONE NUMBER //** 1.800.486.8677  
**SALES / PROCESSOR CONTACT //** sales@sportexapparel.com

**IN HOUSE USE**

**DECORATION METHOD //** Embroidery

**NOTE //**

LAYOUT SHOWS CONCEPTUAL SIZING.  
ACTUAL DIMENSIONS LISTED ON SIZING  
SPEC PAGES



LAYOUT SAMPLE



DESIGN DETAILS

LOCATION

Cuff

DIMENSIONS

3.5w"

COLORS USED

● White



DES01146-001

ITEM DETAILS

PRODUCT NAME

Linear Polo

PART NUMBER

SPTX466364

ITEM COLOR

Midnight Navy

DESCRIPTION

A subtle, textured stripe gives this polo individual style, while a strong dose of stretch adds easy movement.  
5.2-ounce, 90/10 poly/spandex stripe jersey with stay-cool wicking technology  
OGIO heat transfer label for tag-free comfort  
2-piece self-fabric collar  
3-snap placket with O debossed metal snaps  
Cross-grain shoulder and sleeve panels  
Rubber heat transfer OGIO badge on left sleeve  
Side vents  
Double-needle sleeves and hem

Visit us online!  
**Click Here**

CONTACT DETAILS

FILE NAME // Balfour Beatty Rail Nice Polos - 3389 - 02  
ARTIST CONTACT // ArtDepartment@SportexApparel.com - Andy  
PHONE NUMBER // 1.800.486.8677  
SALES / PROCESSOR CONTACT // sales@sportexapparel.com

IN HOUSE USE

DECORATION METHOD // Embroidery

NOTE //

LAYOUT SHOWS CONCEPTUAL SIZING.  
ACTUAL DIMENSIONS LISTED ON SIZING  
SPEC PAGES





LAYOUT SAMPLE



DESIGN DETAILS

LOCATION

Left Sleeve

DIMENSIONS

3.5w"

COLORS USED

● White



DES01146-001

ITEM DETAILS

PRODUCT NAME

Tech Sport Dri-FIT Polo

PART NUMBER

SPTX266998

ITEM COLOR

Anthracite

DESCRIPTION

Built from Dri-FIT fabric, this polo helps keep you cool and dry. The stitch-trimmed gussets make a distinctive statement and allow for easy movement. The design features a self-fabric collar, three-button placket and open hem sleeves. Pearlized buttons are selected to complement the shirt color. The contrast Swoosh design trademark is embroidered on the left sleeve. Made of 4-ounce, 100% polyester.

Visit us online!  
**Click Here**

CONTACT DETAILS

FILE NAME // Balfour Beatty Rail Nice Polos - 3389 - 02  
ARTIST CONTACT // ArtDepartment@SportexApparel.com - Andy  
PHONE NUMBER // 1.800.486.8677  
SALES / PROCESSOR CONTACT // sales@sportexapparel.com

IN HOUSE USE

DECORATION METHOD // Embroidery

NOTE //

LAYOUT SHOWS CONCEPTUAL SIZING.  
ACTUAL DIMENSIONS LISTED ON SIZING  
SPEC PAGES



**LAYOUT SAMPLE**



**DESIGN DETAILS**

**LOCATION**

Left Sleeve

**DIMENSIONS**

3.5w"

**COLORS USED**

● White



DES01146-001

**ITEM DETAILS**

**PRODUCT NAME**

**Nike Golf Dri-FIT Sport  
Colorblock Polo**

**PART NUMBER**

SPTX527806

**ITEM COLOR**

Game Royal

**DESCRIPTION**

Colorblocking on the chest challenges the traditional polo, while Dri-FIT moisture management technology helps keep things cool. Features a self-fabric collar, three-button placket and open hem sleeves. The contrast heat transfer Swoosh design trademark is on the right chest. Made of 6-ounce, 100% polyester Dri-FIT fabric.

Visit us online!  
**Click Here**

**CONTACT DETAILS**

**FILE NAME //** Balfour Beatty Rail Nice Polos - 3389 - 02  
**ARTIST CONTACT //** ArtDepartment@SportexApparel.com - Andy  
**PHONE NUMBER //** 1.800.486.8677  
**SALES / PROCESSOR CONTACT //** sales@sportexapparel.com

**IN HOUSE USE**

**DECORATION METHOD //** Embroidery

**NOTE //**

LAYOUT SHOWS CONCEPTUAL SIZING.  
ACTUAL DIMENSIONS LISTED ON SIZING  
SPEC PAGES



**LAYOUT SAMPLE**



**DESIGN DETAILS**

**LOCATION**

Left Sleeve

**DIMENSIONS**

3.5w"

**COLORS USED**

● Green



DES01146-001

**ITEM DETAILS**

**PRODUCT NAME**

**Nike Golf Dri-FIT Graphic Polo**

**PART NUMBER**

**SPTX527807**

**ITEM COLOR**

Rush Blue/Mean Green

**DESCRIPTION**

Get noticed. Bold heat transfer graphics on the shoulders and Dri-FIT moisture management technology make this polo a sporty, high performer. Design details include a self-fabric collar, three-button placket, open hem sleeves and side vents. The contrast heat transfer Swoosh design trademark is on the center back. Made of 5.4-ounce, 100% polyester Dri-FIT fabric.

Visit us online!  
**Click Here**

**CONTACT DETAILS**

**FILE NAME //** Balfour Beatty Rail Nice Polos - 3389 - 02  
**ARTIST CONTACT //** ArtDepartment@SportexApparel.com - Andy  
**PHONE NUMBER //** 1.800.486.8677  
**SALES / PROCESSOR CONTACT //** sales@sportexapparel.com

**IN HOUSE USE**

**DECORATION METHOD //** Embroidery

**NOTE //**

LAYOUT SHOWS CONCEPTUAL SIZING.  
ACTUAL DIMENSIONS LISTED ON SIZING  
SPEC PAGES





LAYOUT SAMPLE



DESIGN DETAILS

LOCATION

Left Sleeve

DIMENSIONS

3.5w"

COLORS USED

● Black



DES01146-001

ITEM DETAILS

PRODUCT NAME

Nike Golf Dri-FIT Heather Polo

PART NUMBER

SPTX474231

ITEM COLOR

Monsoon Heather

DESCRIPTION

Stay comfortable before, during and after the round in this sophisticated style. Dri-FIT moisture management technology helps keep you dry and focused. Contrast stitch details on the seams and collar. Other features include a self-fabric collar, three-button placket and open hem sleeves. A contrast heat transfer Swoosh design trademark is on the left sleeve. Made of 4-ounce, 100% polyester heathered jersey Dri-FIT fabric.

Visit us online!  
**Click Here**

CONTACT DETAILS

FILE NAME // Balfour Beatty Rail Nice Polos - 3389 - 02  
ARTIST CONTACT // ArtDepartment@SportexApparel.com - Andy  
PHONE NUMBER // 1.800.486.8677  
SALES / PROCESSOR CONTACT // sales@sportexapparel.com

IN HOUSE USE

DECORATION METHOD // Embroidery

NOTE //

LAYOUT SHOWS CONCEPTUAL SIZING.  
ACTUAL DIMENSIONS LISTED ON SIZING  
SPEC PAGES



**LAYOUT SAMPLE**



**DESIGN DETAILS**

**LOCATION**

Left Sleeve

**DIMENSIONS**

3.5w"

**COLORS USED**

○ White



DES01146-001

**ITEM DETAILS**

**PRODUCT NAME**

**Nike Golf Dri-FIT Embossed Polo**

**PART NUMBER**

SPTX632412

**ITEM COLOR**

Storm Blue

**DESCRIPTION**

Subtly embossed geometric graphics add texture and update this relaxed sports look, while Dri-FIT moisture management technology helps keep you dry and comfortable. Features a self-fabric collar, three-button placket and open hem sleeves. The contrast Swoosh design trademark is embroidered on the left sleeve. Made of 5.8-ounce, 91/9 polyester/spandex Dri-FIT fabric.

Visit us online!  
**Click Here**

**CONTACT DETAILS**

**FILE NAME //** Balfour Beatty Rail Nice Polos - 3389 - 02  
**ARTIST CONTACT //** ArtDepartment@SportexApparel.com - Andy  
**PHONE NUMBER //** 1.800.486.8677  
**SALES / PROCESSOR CONTACT //** sales@sportexapparel.com

**IN HOUSE USE**

**DECORATION METHOD //** Embroidery

**NOTE //**

LAYOUT SHOWS CONCEPTUAL SIZING.  
ACTUAL DIMENSIONS LISTED ON SIZING  
SPEC PAGES



LAYOUT SAMPLE

ITEM DETAILS



DESIGN DETAILS

LOCATION

LFC

DIMENSIONS

3.5w"

COLORS USED

● Lt Grey



DES01146-001

PRODUCT NAME

**Nike Golf Ladies Long Sleeve  
Dri-FIT Stretch Tech Polo**

PART NUMBER

SPTX545322

ITEM COLOR

Black

DESCRIPTION

Dri-FIT moisture management technology and stretch fabric make this long sleeve polo a true performer for her. Tailored for a feminine fit with a self-fabric collar, five-button placket and open cuffs. Heat transfer label for tag-free comfort. Dyed-to-match buttons. Side vents. The contrast Swoosh design trademark is embroidered on the center front, below the placket. Made of 5-ounce, 100% polyester Dri-FIT fabric.

Visit us online!  
**Click Here**

CONTACT DETAILS

FILE NAME // Balfour Beatty Rail Nice Polos - 3389 - 02  
ARTIST CONTACT // ArtDepartment@SportexApparel.com - Andy  
PHONE NUMBER // 1.800.486.8677  
SALES / PROCESSOR CONTACT // sales@sportexapparel.com

IN HOUSE USE

DECORATION METHOD // Embroidery

NOTE //

LAYOUT SHOWS CONCEPTUAL SIZING.  
ACTUAL DIMENSIONS LISTED ON SIZING  
SPEC PAGES





LAYOUT SAMPLE



DESIGN DETAILS

LOCATION

Left Sleeve

DIMENSIONS

3.5w"

COLORS USED

● Black



DES01146-001

ITEM DETAILS

PRODUCT NAME

**Elite Series Ladies Dri-FIT  
Ottoman Bonded Polo**

PART NUMBER

SPTX429461

ITEM COLOR

White

DESCRIPTION

A beautiful and luxurious addition to any wardrobe. Subtle ottoman texture meets the unrivaled performance of Dri-FIT moisture management technology. Engineered with a bonded self-fabric collar for classic refinement. Five-button placket. Heat transfer label for tag free comfort. Pearlized buttons with metal rims. Open hem sleeves. Tailored for a feminine fit with an upper back pleat and contrast heat transfer Swoosh design trademark on the left hem. Made of 5.61-ounce, 87/13 polyester/spandex Dri-FIT fabric.

Visit us online!  
**Click Here**

CONTACT DETAILS

FILE NAME // Balfour Beatty Rail Nice Polos - 3389 - 02  
ARTIST CONTACT // ArtDepartment@SportexApparel.com - Andy  
PHONE NUMBER // 1.800.486.8677  
SALES / PROCESSOR CONTACT // sales@sportexapparel.com

IN HOUSE USE

DECORATION METHOD // Embroidery

NOTE //

LAYOUT SHOWS CONCEPTUAL SIZING.  
ACTUAL DIMENSIONS LISTED ON SIZING  
SPEC PAGES



**LAYOUT SAMPLE**



**DESIGN DETAILS**

**LOCATION**

LFC

**DIMENSIONS**

3.5w"

**COLORS USED**

● Dk Grey



DES01146-001

**ITEM DETAILS**

**PRODUCT NAME**

**Ladies Leveler**

**PART NUMBER**

**SPTXLOG119**

**ITEM COLOR**

Purple Haze

**DESCRIPTION**

The super-subtle micro stripe takes this innovative polo to a higher level.  
5-ounce, 100% poly jersey with stay-cool wicking technology  
OGIO heat transfer label for tag free comfort  
Self-fabric collar  
Open placket  
Cap sleeves with sleeve tabs and O debossed rivets  
Banded hem with slight ruching  
Reflective heat transfer O at hem

Visit us online!  
**Click Here**

**CONTACT DETAILS**

**FILE NAME //** Balfour Beatty Rail Nice Polos - 3389 - 02  
**ARTIST CONTACT //** ArtDepartment@SportexApparel.com - Andy  
**PHONE NUMBER //** 1.800.486.8677  
**SALES / PROCESSOR CONTACT //** sales@sportexapparel.com

**IN HOUSE USE**

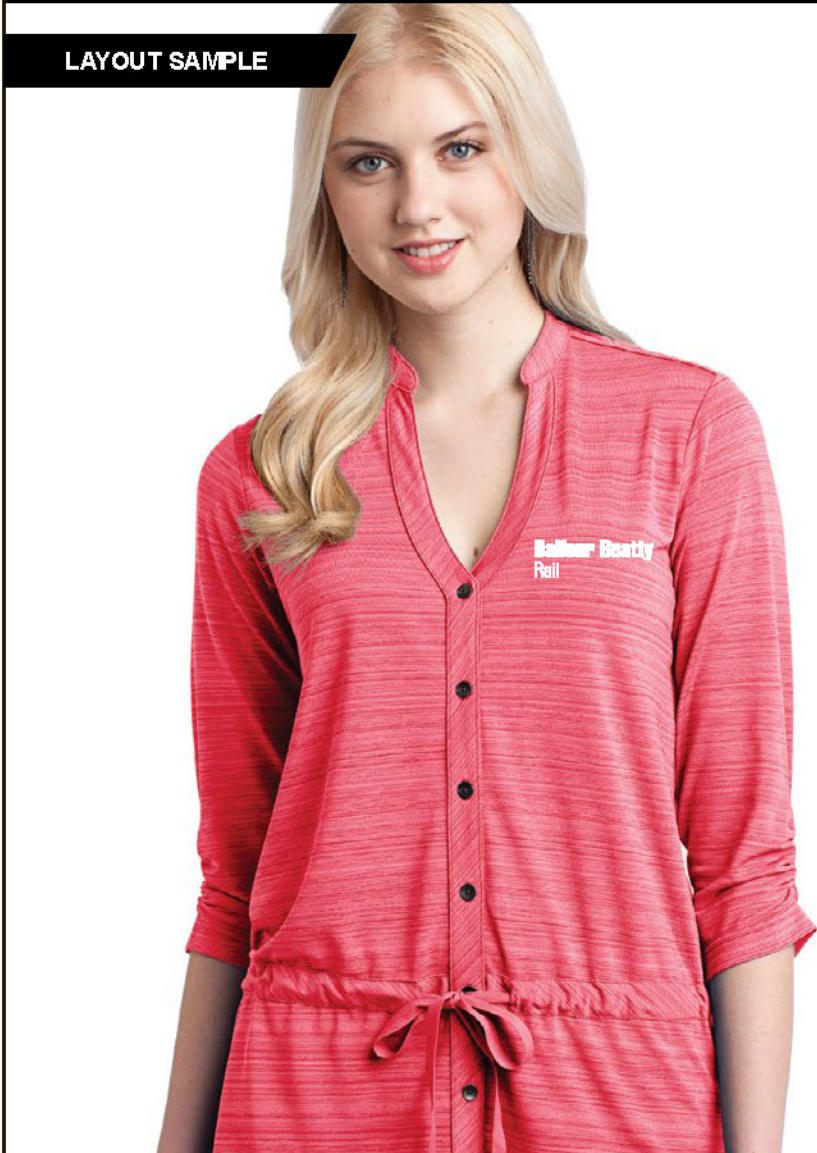
**DECORATION METHOD //** Embroidery

**NOTE //**

LAYOUT SHOWS CONCEPTUAL SIZING.  
ACTUAL DIMENSIONS LISTED ON SIZING  
SPEC PAGES



**LAYOUT SAMPLE**



**DESIGN DETAILS**

**LOCATION**

LFC

**DIMENSIONS**

3.5w"

**COLORS USED**

White



DES01146-001

**ITEM DETAILS**

**PRODUCT NAME**

**Elixir Tunic**

**PART NUMBER**

**SPTXLOG118**

**ITEM COLOR**

Coral Sunset

**DESCRIPTION**

The cure-all for her tired wardrobe, this tunic features bias-cut details and a playful drawcord waist.  
4.3-ounce, 96/4 poly/spandex jersey with stay-cool wicking technology  
OGIO heat transfer label for tag-free comfort  
Self-fabric, bias-cut collar  
6-button, bias-cut placket with O debossed metal buttons  
3/4 sleeves with ruching  
Pleat at back yoke  
Self-fabric, bias-cut drawcord tunnel with dyed-to-match drawcord with metal tips  
Woven OGIO badge at hem

Visit us online!  
**Click Here**

**CONTACT DETAILS**

**FILE NAME //** Balfour Beatty Rail Nice Polos - 3389 - 02  
**ARTIST CONTACT //** ArtDepartment@SportexApparel.com - Andy  
**PHONE NUMBER //** 1.800.486.8677  
**SALES / PROCESSOR CONTACT //** sales@sportexapparel.com

**IN HOUSE USE**

**DECORATION METHOD //** Embroidery

**NOTE //**

LAYOUT SHOWS CONCEPTUAL SIZING.  
ACTUAL DIMENSIONS LISTED ON SIZING  
SPEC PAGES





**LAYOUT SAMPLE**



**DESIGN DETAILS**

**LOCATION**

LFC

**DIMENSIONS**

3.5w"

**COLORS USED**

● Black



DES01146-001

**ITEM DETAILS**

**PRODUCT NAME**

**Ladies Ultra Stretch Polo**

**PART NUMBER**

SPTXL650

**ITEM COLOR**

Slate Grey

**DESCRIPTION**

We took the classic polo and added a lot of stretch for ease of movement. An extra soft hand, a superb drape and a wrinkle-resistant blend make this polo ideal for the workplace or weekend. This shirt also wicks moisture for true performance.

Visit us online!  
**Click Here**

**CONTACT DETAILS**

**FILE NAME //** Balfour Beatty Rail Nice Polos - 3389  
**ARTIST CONTACT //** ArtDepartment@SportexApparel.com - Andy  
**PHONE NUMBER //** 1.800.486.8677  
**SALES / PROCESSOR CONTACT //** sales@sportexapparel.com

**IN HOUSE USE**

**DECORATION METHOD //** Embroidery

**NOTE //**

LAYOUT SHOWS CONCEPTUAL SIZING.  
ACTUAL DIMENSIONS LISTED ON SIZING  
SPEC PAGES



**LAYOUT SAMPLE**



**DESIGN DETAILS**

**LOCATION**

LFC

**DIMENSIONS**

3.5w"

**COLORS USED**

○ White



DES01146-001

**ITEM DETAILS**

**PRODUCT NAME**

**Ladies Slub Polo**

**PART NUMBER**

**SPTXDM450**

**ITEM COLOR**

Deep Sea Blue

**DESCRIPTION**

This soft slub polo is perfect for 9 to 5 and beyond.  
3.8-ounce, 100% ring spun cotton slub, 40 singles  
Self-fabric collar  
4-button placket  
Side vents

Visit us online!  
**Click Here**

**CONTACT DETAILS**

**FILE NAME //** Balfour Beatty Rail Nice Polos - 3389  
**ARTIST CONTACT //** ArtDepartment@SportexApparel.com - Andy  
**PHONE NUMBER //** 1.800.486.8677  
**SALES / PROCESSOR CONTACT //** sales@sportexapparel.com

**IN HOUSE USE**

**DECORATION METHOD //** Embroidery

**NOTE //**

LAYOUT SHOWS CONCEPTUAL SIZING.  
ACTUAL DIMENSIONS LISTED ON SIZING  
SPEC PAGES



LAYOUT SAMPLE



DESIGN DETAILS

LOCATION

Left Sleeve

DIMENSIONS

3.5w"

COLORS USED

● Black



DES01146-001

ITEM DETAILS

PRODUCT NAME

**Elite Series Ladies Dri-FIT  
Ottoman Bonded Polo**

PART NUMBER

SPTX429461

ITEM COLOR

White

DESCRIPTION

A beautiful and luxurious addition to any wardrobe. Subtle ottoman texture meets the unrivaled performance of Dri-FIT moisture management technology. Engineered with a bonded self-fabric collar for classic refinement. Five-button placket. Heat transfer label for tag free comfort. Pearlized buttons with metal rims. Open hem sleeves. Tailored for a feminine fit with an upper back pleat and contrast heat transfer Swoosh design trademark on the left hem. Made of 5.61-ounce, 87/13 polyester/spandex Dri-FIT fabric.

Visit us online!  
**Click Here**

CONTACT DETAILS

FILE NAME // Balfour Beatty Rail Nice Polos - 3389  
ARTIST CONTACT // ArtDepartment@SportexApparel.com - Andy  
PHONE NUMBER // 1.800.486.8677  
SALES / PROCESSOR CONTACT // sales@sportexapparel.com

IN HOUSE USE

DECORATION METHOD // Embroidery

NOTE //

LAYOUT SHOWS CONCEPTUAL SIZING.  
ACTUAL DIMENSIONS LISTED ON SIZING  
SPEC PAGES





**LAYOUT SAMPLE**



**DESIGN DETAILS**

**LOCATION**

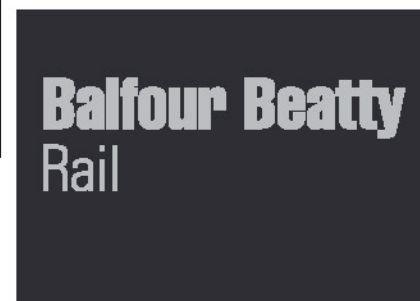
LFC

**DIMENSIONS**

3.5w"

**COLORS USED**

● Lt Grey



DES01146-001

**ITEM DETAILS**

**PRODUCT NAME**

**Ladies Gauge Polo**

**PART NUMBER**

**SPTXLOG122**

**ITEM COLOR**

Blacktop

**DESCRIPTION**

Break away from the ordinary in this button-down style that features cuffed 3/4 sleeves.  
5.9-ounce, 94/6 poly/spandex jersey with stay-cool wicking technology  
OGIO heat transfer label for tag-free comfort  
Self-fabric rounded button-down collar with collar stand  
7-button placket with metal buttons  
Pleat at back yoke  
Button on back of collar  
Double-needle stitching on placket, shoulders, yoke, sleeves and hem  
Cuffed 3/4-sleeves with metal buttons  
Heat transfer OGIO badge at hem

Visit us online!  
**Click Here**

**CONTACT DETAILS**

**FILE NAME //** Balfour Beatty Rail Nice Polos - 3389  
**ARTIST CONTACT //** ArtDepartment@SportexApparel.com - Andy  
**PHONE NUMBER //** 1.800.486.8677  
**SALES / PROCESSOR CONTACT //** sales@sportexapparel.com

**IN HOUSE USE**

**DECORATION METHOD //** Embroidery

**NOTE //**

LAYOUT SHOWS CONCEPTUAL SIZING.  
ACTUAL DIMENSIONS LISTED ON SIZING  
SPEC PAGES



LAYOUT SAMPLE



DESIGN DETAILS

LOCATION

LFC

DIMENSIONS

3.5w"

COLORS USED

White



DES01146-001



ITEM DETAILS

PRODUCT NAME

**Nike Golf Ladies Long Sleeve  
Dri-FIT Stretch Tech Polo**

PART NUMBER

SPTX545322

ITEM COLOR

Black

DESCRIPTION

Dri-FIT moisture management technology and stretch fabric make this long sleeve polo a true performer for her. Tailored for a feminine fit with a self-fabric collar, five-button placket and open cuffs. Heat transfer label for tag-free comfort. Dyed-to-match buttons. Side vents. The contrast Swoosh design trademark is embroidered on the center front, below the placket. Made of 5-ounce, 100% polyester Dri-FIT fabric.

Visit us online!  
**Click Here**

CONTACT DETAILS

FILE NAME // Balfour Beatty Rail Nice Polos - 3389  
ARTIST CONTACT // ArtDepartment@SportexApparel.com - Andy  
PHONE NUMBER // 1.800.486.8677  
SALES / PROCESSOR CONTACT // sales@sportexapparel.com

IN HOUSE USE

DECORATION METHOD // Embroidery

NOTE //

LAYOUT SHOWS CONCEPTUAL SIZING.  
ACTUAL DIMENSIONS LISTED ON SIZING  
SPEC PAGES



LAYOUT SAMPLE



DESIGN DETAILS

LOCATION

LFC

DIMENSIONS

3.5w"

COLORS USED

○ White



DES01146-001

ITEM DETAILS

PRODUCT NAME

Ladies Ultra Stretch Polo

PART NUMBER

SPTXL650

ITEM COLOR

Regatta Blue

DESCRIPTION

We took the classic polo and added a lot of stretch for ease of movement. An extra soft hand, a superb drape and a wrinkle-resistant blend make this polo ideal for the workplace or weekend. This shirt also wicks moisture for true performance.

Visit us online!  
[Click Here](#)

CONTACT DETAILS

FILE NAME // Balfour Beatty Rail Nice Polos - 3389  
ARTIST CONTACT // ArtDepartment@SportexApparel.com - Andy  
PHONE NUMBER // 1.800.486.8677  
SALES / PROCESSOR CONTACT // sales@sportexapparel.com

IN HOUSE USE

DECORATION METHOD // Embroidery

NOTE //

LAYOUT SHOWS CONCEPTUAL SIZING.  
ACTUAL DIMENSIONS LISTED ON SIZING  
SPEC PAGES





**LAYOUT SAMPLE**

**ITEM DETAILS**



**DESIGN DETAILS**

**LOCATION**

LFC

**DIMENSIONS**

3.5w"

**COLORS USED**

● Dk Grey



DES01146-001

**PRODUCT NAME**

**Ladies Gauge Polo**

**PART NUMBER**

**SPTXLOG122**

**ITEM COLOR**

Berry Burst

**DESCRIPTION**

Break away from the ordinary in this button-down style that features cuffed 3/4 sleeves.  
5.9-ounce, 94/6 poly/spandex jersey with stay-cool wicking technology  
OGIO heat transfer label for tag-free comfort  
Self-fabric rounded button-down collar with collar stand  
7-button placket with metal buttons  
Pleat at back yoke  
Button on back of collar  
Double-needle stitching on placket, shoulders, yoke, sleeves and hem  
Cuffed 3/4-sleeves with metal buttons  
Heat transfer OGIO badge at hem

Visit us online!  
**Click Here**

**CONTACT DETAILS**

**FILE NAME //** Balfour Beatty Rail Nice Polos - 3389  
**ARTIST CONTACT //** ArtDepartment@SportexApparel.com - Andy  
**PHONE NUMBER //** 1.800.486.8677  
**SALES / PROCESSOR CONTACT //** sales@sportexapparel.com

**IN HOUSE USE**

**DECORATION METHOD //** Embroidery

**NOTE //**

LAYOUT SHOWS CONCEPTUAL SIZING.  
ACTUAL DIMENSIONS LISTED ON SIZING  
SPEC PAGES



LAYOUT SAMPLE



DESIGN DETAILS

LOCATION

LFC

DIMENSIONS

3.5w"

COLORS USED

● Black



DES01146-001

ITEM DETAILS

PRODUCT NAME

Ladies Rapid Dry™ Tipped Polo

PART NUMBER

SPTXL454

ITEM COLOR

White/Jet Black

DESCRIPTION

We took the classic, moisture-wicking Rapid Dry™ pique polo everyone knows and loves and added tipping to the collar and cuffs for a fresh look. This soft, breathable polo is an appropriate choice for the corporate or casual workplace.

5.6-ounce, 60/40 cotton/poly

Gently contoured silhouette

Flat knit collar and cuffs

Contrast neck taping

3-button Y-placket

Contrast side vent taping

Visit us online!  
**Click Here**

CONTACT DETAILS

FILE NAME // Balfour Beatty Rail Nice Polos - 3389

ARTIST CONTACT // ArtDepartment@SportexApparel.com - Andy

PHONE NUMBER // 1.800.486.8677

SALES / PROCESSOR CONTACT // sales@sportexapparel.com

IN HOUSE USE

DECORATION METHOD // Embroidery

NOTE //

LAYOUT SHOWS CONCEPTUAL SIZING.  
ACTUAL DIMENSIONS LISTED ON SIZING  
SPEC PAGES



**LAYOUT SAMPLE**



**DESIGN DETAILS**

**LOCATION**

Left Sleeve

**DIMENSIONS**

3.5w"

**COLORS USED**

● Dk Grey



DES01146-001

**ITEM DETAILS**

**PRODUCT NAME**

**Axle Polo**

**PART NUMBER**

**SPTXOG113**

**ITEM COLOR**

Diesel Grey

**DESCRIPTION**

Rebelliously cool, this polo has mad style with its two chest pockets and hidden snaps.  
5-ounce, 100% poly tricot with stay-cool wicking technology  
OGIO heat transfer label for tag-free comfort  
Self-fabric collar  
Contrast color placket and collar stand  
3-snap placket with 2 hidden snaps  
Front pockets with contrast color under flaps and O debossed metal snaps  
Set-in, open hem sleeves

Visit us online!  
**Click Here**

**CONTACT DETAILS**

**FILE NAME //** Balfour Beatty Rail Nice Polos - 3389  
**ARTIST CONTACT //** ArtDepartment@SportexApparel.com - Andy  
**PHONE NUMBER //** 1.800.486.8677  
**SALES / PROCESSOR CONTACT //** sales@sportexapparel.com

**IN HOUSE USE**

**DECORATION METHOD //** Embroidery

**NOTE //**

LAYOUT SHOWS CONCEPTUAL SIZING.  
ACTUAL DIMENSIONS LISTED ON SIZING  
SPEC PAGES





**LAYOUT SAMPLE**



**DESIGN DETAILS**

**LOCATION**

Left Sleeve

**DIMENSIONS**

3.5w"

**COLORS USED**

● Dark Brown



DES01146-001

**ITEM DETAILS**

**PRODUCT NAME**

**Axle Polo**

**PART NUMBER**

**SPTXOG116**

**ITEM COLOR**

Cage Brown

**DESCRIPTION**

Rebelliously cool, this polo has mad style with its two chest pockets and hidden snaps.  
5-ounce, 100% poly tricot with stay-cool wicking technology  
OGIO heat transfer label for tag-free comfort  
Self-fabric collar  
Contrast color placket and collar stand  
3-snap placket with 2 hidden snaps  
Front pockets with contrast color under flaps and O debossed metal snaps  
Set-in, open hem sleeves

Visit us online!  
**Click Here**

**CONTACT DETAILS**

**FILE NAME //** Balfour Beatty Rail Nice Polos - 3389  
**ARTIST CONTACT //** ArtDepartment@SportexApparel.com - Andy  
**PHONE NUMBER //** 1.800.486.8677  
**SALES / PROCESSOR CONTACT //** sales@sportexapparel.com

**IN HOUSE USE**

**DECORATION METHOD //** Embroidery

**NOTE //**

LAYOUT SHOWS CONCEPTUAL SIZING.  
ACTUAL DIMENSIONS LISTED ON SIZING  
SPEC PAGES



LAYOUT SAMPLE



DESIGN DETAILS

LOCATION

Right Cuff

DIMENSIONS

3.5w"

COLORS USED

● Silver



DES01146-001

ITEM DETAILS

PRODUCT NAME

**Nike Golf Long Sleeve Dri-FIT  
Stretch Tech Polo**

PART NUMBER

SPTX466364

ITEM COLOR

Blue Sapphire

DESCRIPTION

Long sleeves elevate this polo to another level of sophistication while Dri-FIT moisture management technology adds unparalleled performance. Stretch fabric for hassle-free swinging motion. Flat knit collar and cuffs. Heat transfer label for tag-free comfort. Three-button placket with dyed-to-match buttons. The contrast Swoosh design trademark is embroidered on the lower left sleeve. Side vents. Made of 5-ounce, 100% polyester Dri-FIT fabric.

Visit us online!  
**Click Here**

CONTACT DETAILS

FILE NAME // Balfour Beatty Rail Nice Polos - 3389  
ARTIST CONTACT // ArtDepartment@SportexApparel.com - Andy  
PHONE NUMBER // 1.800.486.8677  
SALES / PROCESSOR CONTACT // sales@sportexapparel.com

IN HOUSE USE

DECORATION METHOD // Embroidery

NOTE //

LAYOUT SHOWS CONCEPTUAL SIZING.  
ACTUAL DIMENSIONS LISTED ON SIZING  
SPEC PAGES



**LAYOUT SAMPLE**



**DESIGN DETAILS**

**LOCATION**

Left Sleeve

**DIMENSIONS**

3.5w"

**COLORS USED**

● Grey



DES01146-001

**ITEM DETAILS**

**PRODUCT NAME**

**Nike Golf Dri-FIT Sport  
Colorblock Polo**

**PART NUMBER**

SPTX527806

**ITEM COLOR**

Black/Flint Grey

**DESCRIPTION**

Colorblocking on the chest challenges the traditional polo, while Dri-FIT moisture management technology helps keep things cool. Features a self-fabric collar, three-button placket and open hem sleeves. The contrast heat transfer Swoosh design trademark is on the right chest. Made of 6-ounce, 100% polyester Dri-FIT fabric.

Visit us online!  
**Click Here**

**CONTACT DETAILS**

**FILE NAME //** Balfour Beatty Rail Nice Polos - 3389  
**ARTIST CONTACT //** ArtDepartment@SportexApparel.com - Andy  
**PHONE NUMBER //** 1.800.486.8677  
**SALES / PROCESSOR CONTACT //** sales@sportexapparel.com

**IN HOUSE USE**

**DECORATION METHOD //** Embroidery

**NOTE //**

LAYOUT SHOWS CONCEPTUAL SIZING.  
ACTUAL DIMENSIONS LISTED ON SIZING  
SPEC PAGES





**LAYOUT SAMPLE**



**DESIGN DETAILS**

**LOCATION**

Left Sleeve

**DIMENSIONS**

3.5w"

**COLORS USED**

● Cool Grey



DES01146-001

**ITEM DETAILS**

**PRODUCT NAME**

**Nike Golf Dri-FIT Graphic Polo**

**PART NUMBER**

**SPTX527807**

**ITEM COLOR**

Black/Cool Grey

**DESCRIPTION**

Get noticed. Bold heat transfer graphics on the shoulders and Dri-FIT moisture management technology make this polo a sporty, high performer. Design details include a self-fabric collar, three-button placket, open hem sleeves and side vents. The contrast heat transfer Swoosh design trademark is on the center back. Made of 5.4-ounce, 100% polyester Dri-FIT fabric.

Visit us online!  
**Click Here**

**CONTACT DETAILS**

**FILE NAME //** Balfour Beatty Rail Nice Polos - 3389  
**ARTIST CONTACT //** ArtDepartment@SportexApparel.com - Andy  
**PHONE NUMBER //** 1.800.486.8677  
**SALES / PROCESSOR CONTACT //** sales@sportexapparel.com

**IN HOUSE USE**

**DECORATION METHOD //** Embroidery

**NOTE //**

LAYOUT SHOWS CONCEPTUAL SIZING.  
ACTUAL DIMENSIONS LISTED ON SIZING  
SPEC PAGES



**LAYOUT SAMPLE**



**DESIGN DETAILS**

**LOCATION**

Right Sleeve

**DIMENSIONS**

3.5w"

**COLORS USED**

● DkGrey



DES01146-001

**ITEM DETAILS**

**PRODUCT NAME**

**Nike Golf Dri-FIT Engineered Mesh Polo**

**PART NUMBER**

SPTX632418

**ITEM COLOR**

Aero Blue/Dark Grey

**DESCRIPTION**

Built for lasting comfort through 18 holes, this modern style has contrasting mesh panels on the sides, shoulders and yoke for stretchable, breathable performance. Dri-FIT moisture management technology keeps moisture at bay. Design details include a self-fabric collar with contrast mesh under collar, three-button placket and open hem sleeves. The contrast Swoosh design trademark is embroidered on the left sleeve. Made of 6.3-ounce, 100% polyester Dri-FIT fabric.

Visit us online!  
**Click Here**

**CONTACT DETAILS**

**FILE NAME //** Balfour Beatty Rail Nice Polos - 3389  
**ARTIST CONTACT //** ArtDepartment@SportexApparel.com - Andy  
**PHONE NUMBER //** 1.800.486.8677  
**SALES / PROCESSOR CONTACT //** sales@sportexapparel.com

**IN HOUSE USE**

**DECORATION METHOD //** Embroidery

**NOTE //**

LAYOUT SHOWS CONCEPTUAL SIZING.  
ACTUAL DIMENSIONS LISTED ON SIZING  
SPEC PAGES



LAYOUT SAMPLE



DESIGN DETAILS

LOCATION

Nape

DIMENSIONS

3.5w"

COLORS USED

○ White



DES01146-001



ITEM DETAILS

PRODUCT NAME

Nike Golf Dri-FIT Embossed Polo

PART NUMBER

SPTX632412

ITEM COLOR

Black

DESCRIPTION

Subtly embossed geometric graphics add texture and update this relaxed sports look, while Dri-FIT moisture management technology helps keep you dry and comfortable. Features a self-fabric collar, three-button placket and open hem sleeves. The contrast Swoosh design trademark is embroidered on the left sleeve. Made of 5.8-ounce, 91/9 polyester/spandex Dri-FIT fabric.

Visit us online!  
[Click Here](http://www.sportexsafety.com)

CONTACT DETAILS

FILE NAME // Balfour Beatty Rail Nice Polos - 3389  
ARTIST CONTACT // ArtDepartment@SportexApparel.com - Andy  
PHONE NUMBER // 1.800.486.8677  
SALES / PROCESSOR CONTACT // sales@sportexapparel.com

IN HOUSE USE

DECORATION METHOD // Embroidery

NOTE //

LAYOUT SHOWS CONCEPTUAL SIZING.  
ACTUAL DIMENSIONS LISTED ON SIZING  
SPEC PAGES



LAYOUT SAMPLE



DESIGN DETAILS

LOCATION

Left Sleeve

DIMENSIONS

3.5w"

COLORS USED

● Black



DES01146-001

ITEM DETAILS

PRODUCT NAME

**Oxford Pique Double Pocket Polo**

PART NUMBER

SPTXk557

ITEM COLOR

Monument Grey/White

DESCRIPTION

Double front pockets give this moisture-wicking polo an eye-catching, contemporary look. The two-tone pique texture makes it a great choice for the office or the weekend.

Visit us online!  
**Click Here**

CONTACT DETAILS

FILE NAME // Balfour Beatty Rail Nice Polos - 3389  
ARTIST CONTACT // ArtDepartment@SportexApparel.com - Andy  
PHONE NUMBER // 1.800.486.8677  
SALES / PROCESSOR CONTACT // sales@sportexapparel.com

IN HOUSE USE

DECORATION METHOD // Embroidery

NOTE //

LAYOUT SHOWS CONCEPTUAL SIZING.  
ACTUAL DIMENSIONS LISTED ON SIZING  
SPEC PAGES





**LAYOUT SAMPLE**



**DESIGN DETAILS**

**LOCATION**

Left Sleeve

**DIMENSIONS**

3.5w"

**COLORS USED**

● Lt Grey



DES01146-001

**ITEM DETAILS**

**PRODUCT NAME**

**Oxford Pique Double Pocket Polo**

**PART NUMBER**

SPTXK557

**ITEM COLOR**

Marina Blue/True Navy

**DESCRIPTION**

Double front pockets give this moisture-wicking polo an eye-catching, contemporary look. The two-tone pique texture makes it a great choice for the office or the weekend.

Visit us online!  
**Click Here**

**CONTACT DETAILS**

**FILE NAME //** Balfour Beatty Rail Nice Polos - 3389  
**ARTIST CONTACT //** ArtDepartment@SportexApparel.com - Andy  
**PHONE NUMBER //** 1.800.486.8677  
**SALES / PROCESSOR CONTACT //** sales@sportexapparel.com

**IN HOUSE USE**

**DECORATION METHOD //** Embroidery

**NOTE //**

LAYOUT SHOWS CONCEPTUAL SIZING.  
ACTUAL DIMENSIONS LISTED ON SIZING  
SPEC PAGES

**ITEM DETAILS**

**PRODUCT NAME:**

**Men's Tech Polyester  
Polo Shirt**

**ITEM #:** SPTX1283703

**ITEM COLOR:** Navy Blue, Deep Red

**ITEM DESCRIPTION:**

Material: 100% polyester  
Signature Moisture Transport System  
wicks sweat and dries fast  
Anti odor technology prevents the growth  
of odor causing microbes  
Performance loose fit  
Self fabric collar  
3 button placket  
Hemmed sleeves

**CONTACT DETAILS**

**FILE NAME:**

Balfour Beatty Rail - Angela Davidson -  
Polo Shirts - JT 18011

**ARTIST CONTACT:**

ArtDepartment@SportexApparel.com

**Marie B.**

**SALES / PROCESSOR CONTACT:**

Sales@SportexApparel.com

**DECORATION METHOD:**

Embroidery

**LAYOUT SAMPLE**



LAYOUT SAMPLE



**ITEM DETAILS**

PRODUCT NAME:

**Men's Team Blend  
Colorblock Polo Shirt**

ITEM #: **SPTX1283702**

ITEM COLOR: **Graphite Grey**

ITEM DESCRIPTION:

Material: 94/6 polyester/elastane  
HeatGear fabric keeps you cool, dry and light  
Performance Polo fabrication with flat back mesh inserts  
Anti pick and pill finish for lasting durability  
Anti odor technology  
UPF 30+ protects your skin from the sun's harmful rays  
Rib knit collar and loose fit  
Under Armour logo on left sleeve

**CONTACT DETAILS**

FILE NAME:

Balfour Beatty Rail - Angela Davidson -  
Polo Shirts - JT18011

ARTIST CONTACT:

[ArtDepartment@SportexApparel.com](mailto:ArtDepartment@SportexApparel.com)  
**Marie B.**

SALES / PROCESSOR CONTACT:

[Sales@SportexApparel.com](mailto:Sales@SportexApparel.com)

DECORATION METHOD:

Embroidery



**ITEM DETAILS**

PRODUCT NAME:

**Under Armour Mens  
Tech Polyester Polo  
Shirt**

ITEM #: **SPTX1283703**

ITEM COLOR: **Red, Midnight**

ITEM DESCRIPTION:

Style Number: 1283703  
Material: 100% polyester  
Signature Moisture Transport System  
wicks sweat and dries fast  
Anti odor technology prevents the growth  
of odor causing microbes  
Performance loose fit  
Self fabric collar  
3 button placket  
Hemmed sleeves

**CONTACT DETAILS**

FILE NAME:

Balfour Beatty - Under armour gear -  
SPTX# - JT14928

ARTIST CONTACT:

[ArtDepartment@SportexApparel.com](mailto:ArtDepartment@SportexApparel.com)  
**Jack B.**

SALES / PROCESSOR CONTACT:

[Sales@SportexApparel.com](mailto:Sales@SportexApparel.com)

DECORATION METHOD:

EMB

**LAYOUT SAMPLE**

DESIGN DETAILS

DES07717-001

LOCATION  
Right Sleeve  
DIMENSIONS  
3" w  
COLORS USED

● Black



DESIGN DETAILS

DES07717-001

LOCATION  
Right Sleeve  
DIMENSIONS  
3" w  
COLORS USED

○ White





ITEM DETAILS

PRODUCT NAME:

**Under Armour Mens  
Team Blend  
Colorblock Polo Shirt**

ITEM #: **SPTX1283702**

ITEM COLOR: **Royal/white, Gray/white**

ITEM DESCRIPTION:

Material: 94/6 polyester/elastane  
HeatGear fabric keeps you cool, dry and light  
Performance Polo fabrication with flat back mesh inserts  
Anti pick and pill finish for lasting durability  
Anti odor technology  
UPF 30+ protects your skin from the sun's harmful rays  
Rib knit collar and loose fit  
Under Armour logo on left sleeve

CONTACT DETAILS

FILE NAME:

Balfour Beatty - Under armour gear - SPTX# - JT14928

ARTIST CONTACT:

[ArtDepartment@SportexApparel.com](mailto:ArtDepartment@SportexApparel.com)  
**Jack B.**

SALES / PROCESSOR CONTACT:

[Sales@SportexApparel.com](mailto:Sales@SportexApparel.com)

DECORATION METHOD:

EMB

DESIGN DETAILS

DES07717-001

LOCATION

Right Sleeve

DIMENSIONS

3"w

COLORS USED

Tonal



DESIGN DETAILS

DES07717-001

LOCATION

Right Sleeve

DIMENSIONS

3"w

COLORS USED

White



DESIGN DETAILS

DES07717-001

LOCATION

Right Sleeve

DIMENSIONS

3" w

COLORS USED

White

**Balfour Beatty**  
**Roll**



ITEM DETAILS

PRODUCT NAME:

**Under Armour Mens  
Tech Polyester Stripe  
Polo Shirt**

ITEM #: **SPTX1283704**

ITEM COLOR: **Royal Blue**

ITEM DESCRIPTION:

Material: 100% polyester  
Signature Moisture Transport System  
wicks sweat and dries fast  
Anti odor technology prevents the growth  
of odor causing microbes  
Performance loose fit  
Self fabric collar  
3 button placket  
Hemmed sleeves

CONTACT DETAILS

FILE NAME:

Balfour Beatty - Under am our gear -  
SPTX# - JT14928

ARTIST CONTACT:

[ArtDepartment@SportexApparel.com](mailto:ArtDepartment@SportexApparel.com)  
**Jack B.**

SALES / PROCESSOR CONTACT:

[Sales@SportexApparel.com](mailto:Sales@SportexApparel.com)

DECORATION METHOD:

EMB



DESIGN DETAILS

LOCATION

Right Sleeve

DIMENSIONS

3" w

COLORS USED

● Tonal

DES07717-001



ITEM DETAILS

PRODUCT NAME:

**Under Armour  
Womens Team Blend  
Colorblock Polo Shirt**

ITEM #: **SPTX1283975**

ITEM COLOR: **Graphite/White**

ITEM DESCRIPTION:

Material: 94/6 polyester/elastane  
HeatGear fabric keeps you cool, dry and light  
Performance Polo fabrication with flat back mesh inserts  
Anti pick and pill finish for lasting durability  
Anti odor technology  
UPF 30+ protects your skin from the sun's harmful rays  
Rib knit collar and loose fit  
Under Armour logo on left sleeve

CONTACT DETAILS

FILE NAME:

Balfour Beatty - Under am our gear -  
SPTX# - JT14928

ARTIST CONTACT:

[ArtDepartment@SportexApparel.com](mailto:ArtDepartment@SportexApparel.com)  
**Jack B.**

SALES / PROCESSOR CONTACT:

[Sales@SportexApparel.com](mailto:Sales@SportexApparel.com)

DECORATION METHOD:

EMB

## LAYOUT SAMPLE



## ITEM DETAILS

**PRODUCT NAME**Sportex Under Armour Men's  
Clubhouse Polo**PART NUMBER**

SPTX1283706

**ITEM COLOR**

Black/Grey, White/Grey

**DESCRIPTION**

88% polyester, 12% elastane  
Smooth anti-pick, anti-pill fabric has a cleaner, snag-free finish  
4-way stretch fabrication allows greater mobility in any direction  
Moisture Transport System wicks sweat & dries fast  
Anti-odor technology prevents the growth of odor causing microbes  
30+ UPF protects your skin from the sun's harmful rays  
Performance fit  
UA logo on left sleeve  
Graphite UA logo on White/True Gray Heather/Graphite  
White UA logo on all other colors

Visit us online!  
**Click Here**

## CONTACT DETAILS

FILE NAME // Balfour Beatty - Under Armour Gear - 11027

ARTIST CONTACT // ArtDepartment@SportexApparel.com - Jules // 1.800.486.8677

SALES / PROCESSOR CONTACT // sales@sportexapparel.com // 1.800.486.8677

## IN HOUSE USE

DECORATION METHOD // Embroidery

**NOTE //**

LAYOUT SHOWS CONCEPTUAL SIZING.  
ACTUAL DIMENSIONS LISTED ON SIZING  
SPEC PAGES



LAYOUT SAMPLE



ITEM DETAILS

PRODUCT NAME

Sportex Under Armour Men's Playoff Polo

PART NUMBER

SPTX1283703

ITEM COLOR

Black, Graphite

DESCRIPTION

100% polyester  
Moisture Transport System wicks sweat & dries fast  
Anti-odor technology prevents the growth of odor causing microbes  
Self-fabric collar  
Performance fit  
Under Armour logo on right chest  
White UA logo on Pink Edge  
Black UA logo on Graphite and Red  
Graphite UA logo on White and Black  
Royal UA logo on Midnight Navy  
Midnight Navy UA logo on Royal

Visit us online!  
**Click Here**

CONTACT DETAILS

FILE NAME // Balfour Beatty - Under Armour Gear - 11027  
ARTIST CONTACT // ArtDepartment@SportexApparel.com - Jules // 1.800.486.8677  
SALES / PROCESSOR CONTACT // sales@sportexapparel.com // 1.800.486.8677

IN HOUSE USE

DECORATION METHOD // Embroidery

NOTE //

LAYOUT SHOWS CONCEPTUAL SIZING.  
ACTUAL DIMENSIONS LISTED ON SIZING  
SPEC PAGES

LAYOUT SAMPLE



ITEM DETAILS

**PRODUCT NAME**

Sportex Under Armour Men's coldblack® Address Polo

**PART NUMBER**

SPTX1283707

**ITEM COLOR**

Steel

**DESCRIPTION**

Revolutionary coldblack technology reflects IR & heat rays, so even dark  
30+ UPF protects your skin from the sun  
Anti-odor technology prevents the growth of odor causing microbes  
Fabric is stretchy, light & breathable so it can handle the hottest days  
Steel UA logo on White and Black  
Stealth Gray UA logo on Steel

Visit us online!  
**Click Here**

CONTACT DETAILS

FILE NAME // Balfour Beatty - Under Armour Gear - 11027  
ARTIST CONTACT // ArtDepartment@SportexApparel.com - Jules // 1.800.486.8677  
SALES / PROCESSOR CONTACT // sales@sportexapparel.com // 1.800.486.8677

IN HOUSE USE

DECORATION METHOD // Embroidery

**NOTE //**

LAYOUT SHOWS CONCEPTUAL SIZING.  
ACTUAL DIMENSIONS LISTED ON SIZING  
SPEC PAGES

LAYOUT SAMPLE



ITEM DETAILS

PRODUCT NAME

Sportex Under Armour Men's Tech Stripe Polo

PART NUMBER

SPTX1283704

ITEM COLOR

Royal

DESCRIPTION

100% polyester  
Moisture Transport System wicks sweat & dries fast  
Anti-odor technology prevents the growth of odor causing microbes  
Self-fabric collar  
Performance fit  
UA Black logo on White  
UA Steel logo on Graphite  
UA Stealth Gray logo on Laser Green  
UA Graphite logo on Royal

Visit us online!  
**Click Here**

CONTACT DETAILS

FILE NAME // Balfour Beatty - Under Armour Gear - 11027  
ARTIST CONTACT // ArtDepartment@SportexApparel.com - Jules // 1.800.486.8677  
SALES / PROCESSOR CONTACT // sales@sportexapparel.com // 1.800.486.8677

IN HOUSE USE

DECORATION METHOD // Embroidery

NOTE //

LAYOUT SHOWS CONCEPTUAL SIZING.  
ACTUAL DIMENSIONS LISTED ON SIZING  
SPEC PAGES

LAYOUT SAMPLE



ITEM DETAILS

PRODUCT NAME

Sportex Under Armour Men's Locker T-Shirt

PART NUMBER

SPTX1268471

ITEM COLOR

Black

DESCRIPTION

100% polyester  
UA Tech fabric with ultra-soft, natural feel for unrivaled comfort  
Signature Moisture Transport System wicks sweat away from the body  
Anti-odor technology prevents the growth of odor-causing microbes  
Raglan sleeve construction and flatlock stitching allow a full range of motion w  
Graphite UA logo on White  
Black UA logo on True Gray Heather  
White UA logo on all other colors

Visit us online!  
**Click Here**

CONTACT DETAILS

FILE NAME // Balfour Beatty - Under Armour Gear - 11027  
ARTIST CONTACT // ArtDepartment@SportexApparel.com - Jules // 1.800.486.8677  
SALES / PROCESSOR CONTACT // sales@sportexapparel.com // 1.800.486.8677

IN HOUSE USE

DECORATION METHOD // Embroidery

NOTE //

LAYOUT SHOWS CONCEPTUAL SIZING.  
ACTUAL DIMENSIONS LISTED ON SIZING  
SPEC PAGES





**LAYOUT SAMPLE**



**DESIGN DETAILS**

**LOCATION**

Left Sleeve

**DIMENSIONS**

3.5w"

**COLORS USED**

● Stitch Color



DES01146-001

**ITEM DETAILS**

**PRODUCT NAME**

**Axle Polo**

**PART NUMBER**

**SPTX0G113**

**ITEM COLOR**

Teal Spark

**DESCRIPTION**

Rebelliously cool, this polo has mad style with its two chest pockets and hidden snaps.  
5-ounce, 100% poly tricot with stay-cool wicking technology  
OGIO heat transfer label for tag-free comfort  
Self-fabric collar  
Contrast color placket and collar stand  
3-snap placket with 2 hidden snaps  
Front pockets with contrast color under flaps and O debossed metal snaps  
Set-in, open hem sleeves  
Woven OGIO badge on left sleeve

Visit us online!  
**Click Here**

**CONTACT DETAILS**

**FILE NAME //** Balfour Beatty Rail Nice Polos - 3389  
**ARTIST CONTACT //** ArtDepartment@SportexApparel.com - Andy  
**PHONE NUMBER //** 1.800.486.8677  
**SALES / PROCESSOR CONTACT //** sales@sportexapparel.com

**IN HOUSE USE**

**DECORATION METHOD //** Embroidery

**NOTE //**

LAYOUT SHOWS CONCEPTUAL SIZING.  
ACTUAL DIMENSIONS LISTED ON SIZING  
SPEC PAGES



LAYOUT SAMPLE



DESIGN DETAILS

LOCATION

Left Sleeve

DIMENSIONS

3.5w"

COLORS USED

● Black



DES01146-001

ITEM DETAILS

PRODUCT NAME

Nike Sphere Dry Diamond Polo

PART NUMBER

SPTX354055

ITEM COLOR

Olive Khaki

DESCRIPTION

Achieve the pinnacle of performance in this style that pairs a rich diamond texture with Nike Sphere Dry moisture management technology. The ultramodern fabric has a "bumpy" inside surface that minimizes cling by allowing only a portion of the shirt to come in contact with the skin. Perfect for any occasion, this exceptional shirt is designed for maximum movement and increased air flow. Finished with a self-fabric collar and open hem sleeves. Features a three-button placket. Pearlized buttons are selected to complement the shirt color. The contrast Swoosh design trademark is embroidered on the left sleeve. Made of 6.35-ounce, 89/11 polyester/spandex.

Visit us online!  
**Click Here**

CONTACT DETAILS

FILE NAME // Balfour Beatty Rail Nice Polos - 3389  
ARTIST CONTACT // ArtDepartment@SportexApparel.com - Andy  
PHONE NUMBER // 1.800.486.8677  
SALES / PROCESSOR CONTACT // sales@sportexapparel.com

IN HOUSE USE

DECORATION METHOD // Embroidery

NOTE //

LAYOUT SHOWS CONCEPTUAL SIZING.  
ACTUAL DIMENSIONS LISTED ON SIZING  
SPEC PAGES



**LAYOUT SAMPLE**

**ITEM DETAILS**



**DESIGN DETAILS**

**LOCATION**

Left Sleeve

**DIMENSIONS**

3.5w"

**COLORS USED**

● Silver



DES01146-001

**PRODUCT NAME**

**Leveler**

**PART NUMBER**

**SPTXOG119**

**ITEM COLOR**

Purple Haze

**DESCRIPTION**

Look great at street level (and beyond) in this micro stripe polo that features an asymmetrical back yoke and a reflective heat transfer O on the back right shoulder. 5-ounce, 100% poly jersey with stay-cool wicking technology  
OGIO heat transfer label for tag free comfort  
Self-fabric collar  
4-button angled placket with O debossed, concave metal buttons  
Set-in, open hem sleeves  
Side vents  
Woven OGIO badge at hem

Visit us online!  
**Click Here**

**CONTACT DETAILS**

**FILE NAME //** Balfour Beatty Rail Nice Polos - 3389  
**ARTIST CONTACT //** ArtDepartment@SportexApparel.com - Andy  
**PHONE NUMBER //** 1.800.486.8677  
**SALES / PROCESSOR CONTACT //** sales@sportexapparel.com

**IN HOUSE USE**

**DECORATION METHOD //** Embroidery

**NOTE //**

LAYOUT SHOWS CONCEPTUAL SIZING.  
ACTUAL DIMENSIONS LISTED ON SIZING  
SPEC PAGES

**ITEM DETAILS**

**PRODUCT NAME:**

**Men's Team Blend  
Colorblock Polo Shirt**

**ITEM #: SPTX1283702**

**ITEM COLOR: Royal**

**ITEM DESCRIPTION:**

Material: 94/6 polyester/elastane  
HeatGear fabric keeps you cool, dry and light  
Performance Polo fabrication with flat back mesh inserts  
Anti pick and pill finish for lasting durability  
Anti odor technology  
UPF 30+ protects your skin from the sun's harmful rays  
Rib knit collar and loose fit  
Under Armour logo on left sleeve

**CONTACT DETAILS**

**FILE NAME:**

Balfour Beatty Rail - Angela Davidson - Polo Shirts - JT 18011

**ARTIST CONTACT:**

ArtDepartment@SportexApparel.com  
**Marie B.**

**SALES / PROCESSOR CONTACT:**

Sales@SportexApparel.com

**DECORATION METHOD:**

Embroidery

**LAYOUT SAMPLE**





LAYOUT SAMPLE



DESIGN DETAILS

LOCATION

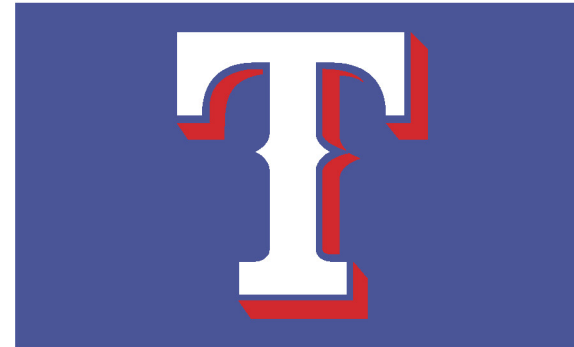
LFC

DIMENSIONS

2"w

COLORS

- White
- 711C



DES05072-001

DESIGN DETAILS

LOCATION

Rt Siv

DIMENSIONS

3"w

COLORS

- White



DES01146-001

ITEM DETAILS

PRODUCT NAME

Sportex Heather Contender™ Polo

PART NUMBER

SPTXST660

ITEM COLOR

Cobalt Heather

DESCRIPTION

3.8-ounce, 100% polyester jersey  
 Tag-free label  
 Self-fabric collar  
 Taped neck  
 3-button placket with dyed-to-match buttons  
 Set-in, open hem sleeves  
 Side vents

Visit us online!  
[Click Here](#)

CONTACT DETAILS

FILE NAME // Balfour Beatty - Swag Polo and Catalog Kit - 8283

ARTIST CONTACT // ArtDepartment@SportexApparel.com - Steffan // 1.800.486.8677

SALES / PROCESSOR CONTACT // sales@sportexapparel.com // 1.800.486.8677

IN HOUSE USE

DECORATION METHOD // Embroidery

NOTE //

LAYOUT SHOWS CONCEPTUAL SIZING.  
 ACTUAL DIMENSIONS LISTED ON SIZING  
 SPEC PAGES

LAYOUT SAMPLE



DESIGN DETAILS

LOCATION

LFC

DIMENSIONS

2"w

COLORS

- White
- 711C



DES05072-001

DESIGN DETAILS

LOCATION

Rt Siv

DIMENSIONS

3"w

COLORS

- White



DES01146-001

ITEM DETAILS

PRODUCT NAME

Sportex Heather Contender™ Polo

PART NUMBER

SPTXST660

ITEM COLOR

Graphite Heather

DESCRIPTION

3.8-ounce, 100% polyester jersey  
 Tag-free label  
 Self-fabric collar  
 Taped neck  
 3-button placket with dyed-to-match buttons  
 Set-in, open hem sleeves  
 Side vents

Visit us online!  
[Click Here](#)

CONTACT DETAILS

FILE NAME // Balfour Beatty - Swag Polo and Catalog Kit - 8283

ARTIST CONTACT // ArtDepartment@SportexApparel.com - Steffan // 1.800.486.8677

SALES / PROCESSOR CONTACT // sales@sportexapparel.com // 1.800.486.8677

IN HOUSE USE

DECORATION METHOD // Embroidery

NOTE //

LAYOUT SHOWS CONCEPTUAL SIZING.  
 ACTUAL DIMENSIONS LISTED ON SIZING  
 SPEC PAGES



LAYOUT SAMPLE

DESIGN DETAILS

LOCATION

Left Chest

DIMENSIONS

3" w

COLORS

● Black

**Balfour Beatty**  
Rail

DES01146-001



ITEM DETAILS

PRODUCT NAME

**Ladies Heather Contender™ Polo**

PART NUMBER

SPTXLST660

ITEM COLOR

True Navy Heather

DESCRIPTION

This heathered style is sure to be a contender for your favorite moisture-wicking, snag-resistant polo. Lightweight and breathable, it excels at sports or casual events and its an exceptional value.  
3.8-ounce, 100% polyester jersey  
Gently contoured silhouette  
Tag-free label  
Self-fabric collar  
Taped neck  
Open Y-placket  
Set in, open hem sleeves

Visit us online!  
[Click Here](#)

CONTACT DETAILS

**FILE NAME** // Balfour Beatty - Polo Shirts - 8421  
**ARTIST CONTACT** // ArtDepartment@SportexApparel.com - Hunter  
**PHONE NUMBER** // 1.800.486.8677  
**SALES / PROCESSOR CONTACT** // sales@sportexapparel.com

IN HOUSE USE

**DECORATION METHOD** // Emb

**NOTE** //

LAYOUT SHOWS CONCEPTUAL SIZING.  
ACTUAL DIMENSIONS LISTED ON SIZING  
SPEC PAGES



**LAYOUT SAMPLE**



**DESIGN DETAILS**

**LOCATION**

Left Sleeve

**DIMENSIONS**

3.5w"

**COLORS USED**

● Stich Color



DES01146-001

**ITEM DETAILS**

**PRODUCT NAME**

**Leveler 1/4-Zip**

**PART NUMBER**

**SPTXOG121**

**ITEM COLOR**

Diesel Grey

**DESCRIPTION**

The micro stripe and reflective contrast taping firmly elevate this style a level above all the others.  
5-ounce, 100% poly jersey with stay-cool wicking technology  
OGIO heat transfer label for tag free comfort  
Cadet collar with zipper garage  
Reflective taping at the sides and back yoke  
Reflective heat transfer O on back right shoulder  
Raglan, open hem sleeves  
Woven OGIO badge at hem

Visit us online!  
**Click Here**

**CONTACT DETAILS**

**FILE NAME //** Balfour Beatty Rail Nice Polos - 3389 - 02  
**ARTIST CONTACT //** ArtDepartment@SportexApparel.com - Andy  
**PHONE NUMBER //** 1.800.486.8677  
**SALES / PROCESSOR CONTACT //** sales@sportexapparel.com

**IN HOUSE USE**

**DECORATION METHOD //** Embroidery

**NOTE //**

LAYOUT SHOWS CONCEPTUAL SIZING.  
ACTUAL DIMENSIONS LISTED ON SIZING  
SPEC PAGES





**ITEM DETAILS**

**PRODUCT NAME:**

**Mens Qualifier Corp  
1/4 Zip**

**ITEM #:** SPTX1276312

**ITEM COLOR:** Graphite Grey

**ITEM DESCRIPTION:**

Material: 100% polyester  
Soft and durable circular knit construction with brushed interior for extra warmth  
Signature Moisture Transport System wicks sweat to keep you dry and light  
Reflective 1/4 zip for visibility during after hours training  
Contrast fabric overlays on sleeves and collar  
Rolled forward shoulder seams for unrivaled comfort  
Under Armour logo on left sleeve

**CONTACT DETAILS**

**FILE NAME:**

Balfour Beatty Rail - Angela Davidson - Polo Shirts - JT18011

**ARTIST CONTACT:**

ArtDepartment@SportexApparel.com  
**Marie B.**

**SALES / PROCESSOR CONTACT:**

Sales@SportexApparel.com

**DECORATION METHOD:**

Embroidery

LAYOUT SAMPLE



**ITEM DETAILS**

PRODUCT NAME:

**Men's Groove Hybrid Jacket**

ITEM #: **SPTX1272388**

ITEM COLOR: **Ultra Blue/ Stealth Grey**

ITEM DESCRIPTION:

UA Storm technology repels water without sacrificing breathability  
Lightweight, durable ripstop fabric with a mesh lining  
Underarm panels use a hollow-fiber construction to stretch & trap warmth  
Anti-odor technology prevents the growth of odor-causing microbes  
Elastic cuffs & hem  
Hand pockets

**CONTACT DETAILS**

FILE NAME:

Balfour Beatty Rail - Angela Davidson - Polo Shirts - JT18011

ARTIST CONTACT:

[ArtDepartment@SportexApparel.com](mailto:ArtDepartment@SportexApparel.com)  
**Marie B.**

SALES / PROCESSOR CONTACT:

[Sales@SportexApparel.com](mailto:Sales@SportexApparel.com)

DECORATION METHOD:

Embroidery

PRODUCT NAME:

**UA Groove Hybrid Jacket**

ITEM #: **SPTX1272388**

ITEM COLOR: **Ultra Blue**

ITEM DESCRIPTION:

Loose: Fuller cut for complete comfort.  
UA Storm technology repels water without sacrificing breathability  
Lightweight, durable ripstop fabric with a mesh lining  
Underarm panels use a hollow-fiber construction to stretch & trap warmth  
Anti-odor technology prevents the growth of odor-causing microbes  
Elastic cuffs & hem  
Hand pockets  
Body: Polyester Panels:  
Polyester/Elastane Imported

DESIGN DETAILS

DES07717-001

LOCATION

Right Sleeve

DIMENSIONS

3" w

COLORS USED

● Match Grey

**Balfour Beatty**  
**Rail**



CONTACT DETAILS

FILE NAME:

Balfour Beatty - Under arm our gear -  
SPTX# - JT14928

ARTIST CONTACT:

ArtDepartment@SportexApparel.com  
**Jack B.**

SALES / PROCESSOR CONTACT:

Sales@SportexApparel.com

DECORATION METHOD:

EMB

PRODUCT NAME:

**Ladies' Qualifier 1/4  
Zip by Under Armour**

ITEM #: **SPTX1276355**

ITEM COLOR: **Graphite/White**

ITEM DESCRIPTION:

100% Polyester. Soft and durable circular knit construction with brushed interior for extra warmth. Signature Moisture Transport System wicks sweat to keep you dry and light. Reflective 1/4 zip for visibility during after-hours training. Contrast fabric overlays on sleeves and collar. Rolled forward shoulder seams for unrivaled comfort. UA logo on left sleeve.

DESIGN DETAILS

DES07717-001

LOCATION

Right Sleeve

DIMENSIONS

3" w

COLORS USED

● Tonal

**Balfour Beatty**  
**T&E**

LAYOUT SAMPLE



CONTACT DETAILS

FILE NAME:

Balfour Beatty - Under armour gear -  
SPTX# - JT14928

ARTIST CONTACT:

[ArtDepartment@SportexApparel.com](mailto:ArtDepartment@SportexApparel.com)  
**Jack B.**

SALES / PROCESSOR CONTACT:

[Sales@SportexApparel.com](mailto:Sales@SportexApparel.com)

DECORATION METHOD:

EMB





DESIGN DETAILS

LOCATION

Right Sleeve

DIMENSIONS

3" w

COLORS USED

● Tonal

DES07717-001

**Balfour Beatty**  
Ball

ITEM DETAILS

PRODUCT NAME:

**Ladies' Qualifier 1/4  
Zip by Under Armour**

ITEM #: **SPTX779796**

ITEM COLOR: **Black/Dark Grey**

ITEM DESCRIPTION:

Material: 93/7 polyester/spandex Dri-FIT  
Weight: 7.6 ounces  
Built for the course, gym or just around town, this cover up performs with comfortable stretch for uninhibited movement and Dri-FIT moisture management technology for exceptional cooling  
Contrast collar and zipper  
Open cuffs and hem  
Tailored for a feminine fit  
Thumbholes at cuffs for warmth and enhanced fit  
The contrast swoosh design trademark is embroidered on the upper left sleeve

CONTACT DETAILS

FILE NAME:

Balfour Beatty - Under armour gear -  
SPTX# - JT14928

ARTIST CONTACT:

[ArtDepartment@SportexApparel.com](mailto:ArtDepartment@SportexApparel.com)

**Jack B.**

SALES / PROCESSOR CONTACT:

[Sales@SportexApparel.com](mailto:Sales@SportexApparel.com)

DECORATION METHOD:

EMB

## LAYOUT SAMPLE



## ITEM DETAILS

## PRODUCT NAME

Sportex Under Armour Ladies' Qualifier  
1/4 Zip

## PART NUMBER

SPTX1276355

## ITEM COLOR

Midnight, Graphite

## DESCRIPTION

100% Polyester  
Soft and durable circular knit construction  
with brushed interior for extra warmth  
Signature Moisture Transport System wicks  
sweat to keep you dry and light  
Reflective 1/4 zip for visibility during  
after-hours training  
Contrast fabric overlays on sleeves and  
collar  
Rolled forward shoulder seams for unrivaled  
comfort  
UA logo on left sleeve  
White UA logo on all colors

Visit us online!  
**Click Here**

## CONTACT DETAILS

FILE NAME // Balfour Beatty - Under Armour Gear - 11027

ARTIST CONTACT // ArtDepartment@SportexApparel.com - Jules // 1.800.486.8677

SALES / PROCESSOR CONTACT // sales@sportexapparel.com // 1.800.486.8677

## IN HOUSE USE

DECORATION METHOD // Embroidery

## NOTE //

LAYOUT SHOWS CONCEPTUAL SIZING.  
ACTUAL DIMENSIONS LISTED ON SIZING  
SPEC PAGES

LAYOUT SAMPLE



ITEM DETAILS

PRODUCT NAME

Sportex Under Armour Men's Qualifier  
1/4 Zip

PART NUMBER

SPTX1276312

ITEM COLOR

Navy

DESCRIPTION

100% Polyester  
Soft and durable circular knit construction with brushed interior for extra warmth  
Signature Moisture Transport System wicks sweat to keep you dry and light  
Reflective 1/4 zip for visibility during after-hours training  
Contrast fabric overlays on sleeves and collar  
Rolled forward shoulder seams for unrivaled comfort  
UA logo on left sleeve  
White UA logo on all colors

Visit us online!  
**Click Here**

CONTACT DETAILS

FILE NAME // Balfour Beatty - Under Armour Gear - 11027  
ARTIST CONTACT // ArtDepartment@SportexApparel.com - Jules // 1.800.486.8677  
SALES / PROCESSOR CONTACT // sales@sportexapparel.com // 1.800.486.8677

IN HOUSE USE

DECORATION METHOD // Embroidery

NOTE //

LAYOUT SHOWS CONCEPTUAL SIZING.  
ACTUAL DIMENSIONS LISTED ON SIZING  
SPEC PAGES

LAYOUT SAMPLE

DESIGN DETAILS

LOCATION

Right Sleeve

DIMENSIONS

3" w

COLORS USED

● Tonal

**Balfour Beatty**  
**Rail**



ITEM DETAILS

PRODUCT NAME:

**Under Armour Mens  
Qualifier Polyester  
Sweatshirt**

ITEM #: **SPTX1276312**

ITEM COLOR: **Graphite Gray/White**

ITEM DESCRIPTION:

Material: 100% polyester  
Soft and durable circular knit construction with brushed interior for extra warmth  
Signature Moisture Transport System wicks sweat to keep you dry and light  
Reflective 1/4 zip for visibility during after hours training  
Contrast fabric overlays on sleeves and collar  
Rolled forward shoulder seams for unrivaled comfort  
Under Armour logo on left sleeve

CONTACT DETAILS

FILE NAME:

Balfour Beatty - Under am our gear -  
SPTX# - JT14928

ARTIST CONTACT:

[ArtDepartment@SportexApparel.com](mailto:ArtDepartment@SportexApparel.com)  
**Jack B.**

SALES / PROCESSOR CONTACT:

[Sales@SportexApparel.com](mailto:Sales@SportexApparel.com)

DECORATION METHOD:

EMB



DESIGN DETAILS

LOCATION

Right Sleeve

DIMENSIONS

3" w

COLORS USED

White

**Balfour Beatty**  
**Roll**



ITEM DETAILS

PRODUCT NAME:

**UA Groove Hybrid Jacket**

ITEM #: **SPTX1272388**

ITEM COLOR: **Ultra Blue**

ITEM DESCRIPTION:

Loose: Fuller cut for complete comfort.  
UA Storm technology repels water without sacrificing breathability  
Lightweight, durable ripstop fabric with a mesh lining  
Underarm panels use a hollow-fiber construction to stretch & trap warmth  
Anti-odor technology prevents the growth of odor-causing microbes  
Elastic cuffs & hem  
Hand pockets  
Body: Polyester Panels:  
Polyester/Elastane Imported

CONTACT DETAILS

FILE NAME:

Balfour Beatty - Under arm our gear - SPTX# - JT14928

ARTIST CONTACT:

[ArtDepartment@SportexApparel.com](mailto:ArtDepartment@SportexApparel.com)  
**Jack B.**

SALES / PROCESSOR CONTACT:

[Sales@SportexApparel.com](mailto:Sales@SportexApparel.com)

DECORATION METHOD:

EMB

LAYOUT SAMPLE



DESIGN DETAILS

LOCATION

Right Sleeve

DIMENSIONS

3" w

COLORS USED

● Tonal

**Balfour Beatty**  
**Logo**

ITEM DETAILS

PRODUCT NAME:

**Ladies' Qualifier 1/4  
Zip by Under Armour**

ITEM #: **SPTX1276355**

ITEM COLOR: **Graphite/White**

ITEM DESCRIPTION:

100% Polyester. Soft and durable circular knit construction with brushed interior for extra warmth. Signature Moisture Transport System wicks sweat to keep you dry and light. Reflective 1/4 zip for visibility during after-hours training. Contrast fabric overlays on sleeves and collar. Rolled forward shoulder seams for unrivaled comfort. UA logo on left sleeve.

CONTACT DETAILS

FILE NAME:

Balfour Beatty - Under armour gear -  
SPTX# - JT14928

ARTIST CONTACT:

[ArtDepartment@SportexApparel.com](mailto:ArtDepartment@SportexApparel.com)  
**Jack B.**

SALES / PROCESSOR CONTACT:

[Sales@SportexApparel.com](mailto:Sales@SportexApparel.com)

DECORATION METHOD:

EMB

LAYOUT SAMPLE



DESIGN DETAILS

LOCATION

Right Sleeve

DIMENSIONS

3" w

COLORS USED

● Tonal



ITEM DETAILS

PRODUCT NAME:

**Ladies' Qualifier 1/4  
Zip by Under Armour**

ITEM #: **SPTX779796**

ITEM COLOR: **Black/Dark Grey**

ITEM DESCRIPTION:

Material: 93/7 polyester/spandex Dri-FIT  
Weight: 7.6 ounces  
Built for the course, gym or just around town, this cover up performs with comfortable stretch for uninhibited movement and Dri-FIT moisture management technology for exceptional cooling  
Contrast collar and zipper  
Open cuffs and hem  
Tailored for a feminine fit  
Thumbholes at cuffs for warmth and enhanced fit  
The contrast swoosh design trademark is embroidered on the upper left sleeve

CONTACT DETAILS

FILE NAME:

Balfour Beatty - Under armour gear -  
SPTX# - JT14928

ARTIST CONTACT:

[ArtDepartment@SportexApparel.com](mailto:ArtDepartment@SportexApparel.com)  
**Jack B.**

SALES / PROCESSOR CONTACT:

[Sales@SportexApparel.com](mailto:Sales@SportexApparel.com)

DECORATION METHOD:

EMB



PRODUCT NAME:

**Richardson 112**

ITEM #: **SPTX112**

ITEM COLOR: **Charcoal/ Neon Orange**

ITEM DESCRIPTION:

Classic trucker cap style built with the Richardson quality and fit you've come to expect. 40+ colorways and 40+ years of sports product experience are just a few reasons this remains a best-seller and favorite cap for teams, fans, and brands alike.

CONTACT DETAILS

FILE NAME:

Balfour Beatty - Joyce Jones -  
SPTX798400 - JT32671

ARTIST CONTACT:

[ArtDepartment@SportexApparel.com](mailto:ArtDepartment@SportexApparel.com)  
**Chris B.**

SALES / PROCESSOR CONTACT:

[Sales@SportexApparel.com](mailto:Sales@SportexApparel.com)

DECORATION METHOD:

EMB

LAYOUT SAMPLE





PRODUCT NAME:

**Richardson 112**

ITEM #: **SPTX112**

ITEM COLOR: **Charcoal/ Neon GREEN**

ITEM DESCRIPTION:

Classic trucker cap style built with the Richardson quality and fit you've come to expect. 40+ colorways and 40+ years of sports product experience are just a few reasons this remains a best-seller and favorite cap for teams, fans, and brands alike.

CONTACT DETAILS

FILE NAME:

Balfour Beatty - Joyce Jones -  
SPTX798400 - JT32671

ARTIST CONTACT:

ArtDepartment@SportexApparel.com  
**Chris B.**

SALES / PROCESSOR CONTACT:

Sales@SportexApparel.com

DECORATION METHOD:

EMB

LAYOUT SAMPLE



ITEM DETAILS

PRODUCT NAME:

**Richardson 112**

ITEM #: **SPTX112**

ITEM COLOR: **Charcoal/ Neon  
BLUE**

ITEM DESCRIPTION:

Classic trucker cap style built with the Richardson quality and fit you've come to expect. 40+ colorways and 40+ years of sports product experience are just a few reasons this remains a best-seller and favorite cap for teams, fans, and brands alike.

CONTACT DETAILS

FILE NAME:

Balfour Beatty - Joyce Jones -  
SPTX798400 - JT32671

ARTIST CONTACT:

ArtDepartment@SportexApparel.com  
**Chris B.**

SALES / PROCESSOR CONTACT:

Sales@SportexApparel.com

DECORATION METHOD:

EMB

LAYOUT SAMPLE



ITEM DETAILS

PRODUCT NAME:

**TRUCKER**

ITEM #: **SPTX112**

ITEM COLOR: **Navy**

ITEM DESCRIPTION:

Classic trucker cap style built with the Richardson quality and fit you've come to expect.

CONTACT DETAILS

FILE NAME:

Balfour Beatty - David Acord - SPTX112 - JT20350

ARTIST CONTACT:

[ArtDepartment@SportexApparel.com](mailto:ArtDepartment@SportexApparel.com)  
**Eric J.**

SALES / PROCESSOR CONTACT:

[Sales@SportexApparel.com](mailto:Sales@SportexApparel.com)

DECORATION METHOD:

Embroidery

LAYOUT SAMPLE





ITEM DETAILS

PRODUCT NAME:

**TRUCKER**

ITEM #: **SPTX112**

ITEM COLOR: **Navy**

ITEM DESCRIPTION:

Classic trucker cap style built with the Richardson quality and fit you've come to expect.

CONTACT DETAILS

FILE NAME:

Balfour Beatty - David Acord - SPTX112 - JT20350

ARTIST CONTACT:

[ArtDepartment@SportexApparel.com](mailto:ArtDepartment@SportexApparel.com)  
**Eric J.**

SALES / PROCESSOR CONTACT:

[Sales@SportexApparel.com](mailto:Sales@SportexApparel.com)

DECORATION METHOD:

Embroidery

LAYOUT SAMPLE





LAYOUT SAMPLE



DESIGN DETAILS

DES01123-003

LOCATION	
FOC	
DIMENSIONS	
3" w	
COLORS	
● 301C	



ITEM DETAILS

PRODUCT NAME

Sportex Pigment-Dyed Camouflage Cap

PART NUMBER

SPTXC819

ITEM COLOR

Realtree Extra Green

DESCRIPTION

Pigment dying the front panels, visor and closure gives this cap an oiled leather look. A popular camo pattern completes the mid and back panels. Fabric: 60/40 cotton/poly  
Structure: Unstructured  
Profile: Low  
Closure: Hook and loop

Visit us online!  
**Click Here**

CONTACT DETAILS

FILE NAME // Balfour Beatty - Caps - 12232

ARTIST CONTACT // ArtDepartment@SportexApparel.com - Steffan // 1.800.486.8677

SALES / PROCESSOR CONTACT // sales@sportexapparel.com // 1.800.486.8677

IN HOUSE USE

DECORATION METHOD // Embroidery

NOTE //

LAYOUT SHOWS CONCEPTUAL SIZING.  
ACTUAL DIMENSIONS LISTED ON SIZING  
SPEC PAGES

LAYOUT SAMPLE



DESIGN DETAILS

DES01123-003

LOCATION	
FDC	
DIMENSIONS	
3" W	
COLORS	
● 301C	



ITEM DETAILS

PRODUCT NAME

Sportex Pro Camouflage Series  
Garment-Washed Cap

PART NUMBER

SP TXC871

ITEM COLOR

Mossy Oak NewBreakup

DESCRIPTION

Fabric: 60/40 cotton/poly  
Structure: Unstructured  
Profile: Low  
Closure: Hook and loop

Visit us online!  
**Click Here**

CONTACT DETAILS

FILE NAME // Balfour Beatty - Camo Caps - 5414

ARTIST CONTACT // ArtDepartment@SportexApparel.com - Steffan // 1.800.486.8677

SALES / PROCESSOR CONTACT // sales@sportexapparel.com // 1.800.486.8677

IN HOUSE USE

DECORATION METHOD // Embroidery

NOTE //

LAYOUT SHOWS CONCEPTUAL SIZING.  
ACTUAL DIMENSIONS LISTED ON SIZING  
SPEC PAGES

LAYOUT SAMPLE



DESIGN DETAILS

DES01123-003

<b>LOCATION</b>	FOC
<b>DIMENSIONS</b>	3"W
<b>COLORS</b>	● Match Cap



ITEM DETAILS

PRODUCT NAME

Sportex Vintage Washed Contrast Stitch Cap

PART NUMBER

SPTXC835

ITEM COLOR

Brown/Stone

DESCRIPTION

Fabric: 100% cotton twill  
Structure: Unstructured  
Profile: Low  
Closure: Hook and loop

Visit us online!  
**Click Here**

CONTACT DETAILS

FILE NAME // Balfour Beatty - Camo Caps - 5414

ARTIST CONTACT // ArtDepartment@SportexApparel.com - Steffan // 1.800.486.8677

SALES / PROCESSOR CONTACT // sales@sportexapparel.com // 1.800.486.8677

IN HOUSE USE

DECORATION METHOD // Embroidery

NOTE //

LAYOUT SHOWS CONCEPTUAL SIZING.  
ACTUAL DIMENSIONS LISTED ON SIZING  
SPEC PAGES

LAYOUT SAMPLE



DESIGN DETAILS

DES01123-003

<b>LOCATION</b>
FOC
<b>DIMENSIONS</b>
3"W
<b>COLORS</b>
● Match Cap



ITEM DETAILS

PRODUCT NAME

Sportex Vintage Washed Contrast Stitch Cap

PART NUMBER

SPTXC835

ITEM COLOR

Navy/Light Sand

DESCRIPTION

Fabric: 100% cotton twill  
Structure: Unstructured  
Profile: Low  
Closure: Hook and loop

Visit us online!  
**Click Here**

CONTACT DETAILS

FILE NAME // Balfour Beatty - Camo Caps - 5414

ARTIST CONTACT // ArtDepartment@SportexApparel.com - Steffan // 1.800.486.8677

SALES / PROCESSOR CONTACT // sales@sportexapparel.com // 1.800.486.8677

IN HOUSE USE

DECORATION METHOD // Embroidery

NOTE //

LAYOUT SHOWS CONCEPTUAL SIZING.  
ACTUAL DIMENSIONS LISTED ON SIZING  
SPEC PAGES





## ITEM DETAILS

## PRODUCT NAME:

**3M™ E-A-R™ UltraFit™  
Multi-Flange  
Elastomeric Polymer  
Corded Earplugs**ITEM #: **SPTXCAS340-4004**ITEM COLOR: **BLUE / YELLOW**

## ITEM DESCRIPTION:

Premolded, triple flange earplugs fit comfortably in a wide range of ear sizes. No need to roll earplugs before fitting so the tips stay clean even if hands are dirty. Soft polymer is washable and reusable, reducing both waste and costs. Poly bag keeps each pair of earplugs available or accessible for re-use. Noise reduction rating (NRR) 25 dB CSA Class AL. Test compatible with 3M™ E-A-R fit™ Validation System.

## CONTACT DETAILS

## FILE NAME:

Balfour Beatty Rail - Joyce Jones -  
SPTXC AS340-4004 - JT26284

## ARTIST CONTACT:

ArtDepartment@SportexApparel.com  
**Zach B.**

## SALES / PROCESSOR CONTACT:

Sales@SportexApparel.com

## DECORATION METHOD:

BLANK

PRODUCT NAME:

**DUFFLE BAG**

ITEM #: **SPTXSD238**

ITEM COLOR: **BLACK**

ITEM DESCRIPTION:

Sportex Safety 600-denier polyester with vinyl backing has a double zippered main compartment with bottom stiffener, two zippered front pockets, and zippered end pockets, finished with bottom studs, webbed handles and adjustable / detachable shoulder strap with metal hardware. Size: 30" L x 14" H x 14" W (expanded), 27" L x 14" H x 14" W (normal)

CONTACT DETAILS

FILE NAME:

Balfour Beatty - Joyce Jones -  
SPTX798400 - JT32671

ARTIST CONTACT:

ArtDepartment@SportexApparel.com  
**Chris B.**

SALES / PROCESSOR CONTACT:

Sales@SportexApparel.com

DECORATION METHOD:

EMB

LAYOUT SAMPLE



**REFLECTIVE TAPING SEWN ON**



**LAYOUT SAMPLE**



**ITEM DETAILS**

**PRODUCT NAME**

3M™ Virtua™ Sport CCS Safety Glasses With Black Polycarbonate Frame, Gray Polycarbonate Anti-Scratch Hard Coat Lens And Corded Earplug Control System

**PART NUMBER**

SPTX3MR11799-00000

**ITEM COLOR**

N/A

**DESCRIPTION**

3M™ Virtua™ Sport CCS Safety Glasses with black frame help protect sight and provides convenient access to hearing protection when it's needed. Glasses feature gray polycarbonate hard coat lens and corded earplug control system which provides 99.9% UV protection. Unique temple design controls and holds the cord of the earplug to keep it securely in place and untangled while in use. CCS is convenient for workers who are continuously exposed to noisy areas and allows the corded earplugs to dual as a lanyard. They meet all the requirements of ANSI Z87.1-2003.

Visit us online!  
**Click Here**

**CONTACT DETAILS**

**FILE NAME //** Balfour Beatty - Joyce Jones - Safety Glasses - JT18443  
**ARTIST CONTACT //** ArtDepartment@SportexApparel.com - Marie  
**PHONE NUMBER //** 1.800.486.8677  
**SALES / PROCESSOR CONTACT //** sales@sportexapparel.com

**IN HOUSE USE**

**DECORATION METHOD //**

**NOTE //**

LAYOUT SHOWS CONCEPTUAL SIZING.  
ACTUAL DIMENSIONS LISTED ON SIZING  
SPEC PAGES