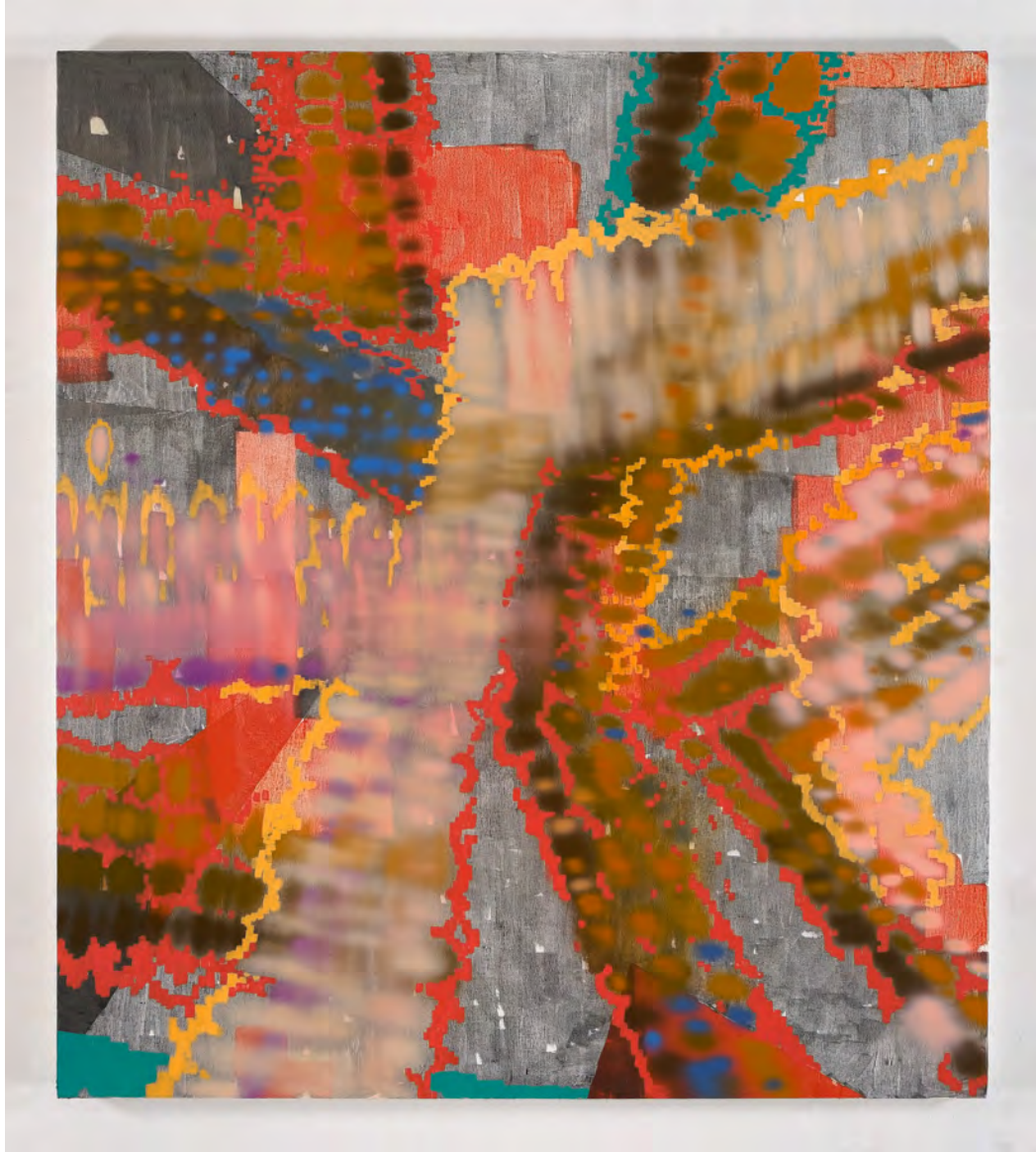


# Gallery 181

Presented in Penthouse 69B



## 181 FREMONT

Inquire for Pricing and Availability:

HOLLY BAXTER  
& ASSOCIATES

[HOLLY@HOLLYBAXTERANDASSOCIATES.COM](mailto:HOLLY@HOLLYBAXTERANDASSOCIATES.COM)



SARAH BRAMAN

*Your Room*, 2017

Found table, laminated glass, wood, acrylic paint, dyed fabric

42 by 20 by 19 in. 106.7 by 50.8 by 48.3 cm.

(MI&N 14431)

Inquire for Pricing and Availability:

HOLLY BAXTER  
& ASSOCIATES

[HOLLY@HOLLYBAXTERANDASSOCIATES.COM](mailto:HOLLY@HOLLYBAXTERANDASSOCIATES.COM)



JAY DeFEO  
*White Water*, 1989  
Oil on linen  
16 1/8 by 12 in. 41 by 30.5 cm.  
(MI&N 12379)

Inquire for Pricing and Availability:

HOLLY BAXTER  
& ASSOCIATES

[HOLLY@HOLLYBAXTERANDASSOCIATES.COM](mailto:HOLLY@HOLLYBAXTERANDASSOCIATES.COM)





KELTIE FERRIS  
*Question #1*, 2021  
Watercolor on paper  
30 1/8 by 22 5/8 in. 76.5 by 57.5 cm.  
(MI&N 17048)

Inquire for Pricing and Availability:

HOLLY BAXTER  
& ASSOCIATES

[HOLLY@HOLLYBAXTERANDASSOCIATES.COM](mailto:HOLLY@HOLLYBAXTERANDASSOCIATES.COM)



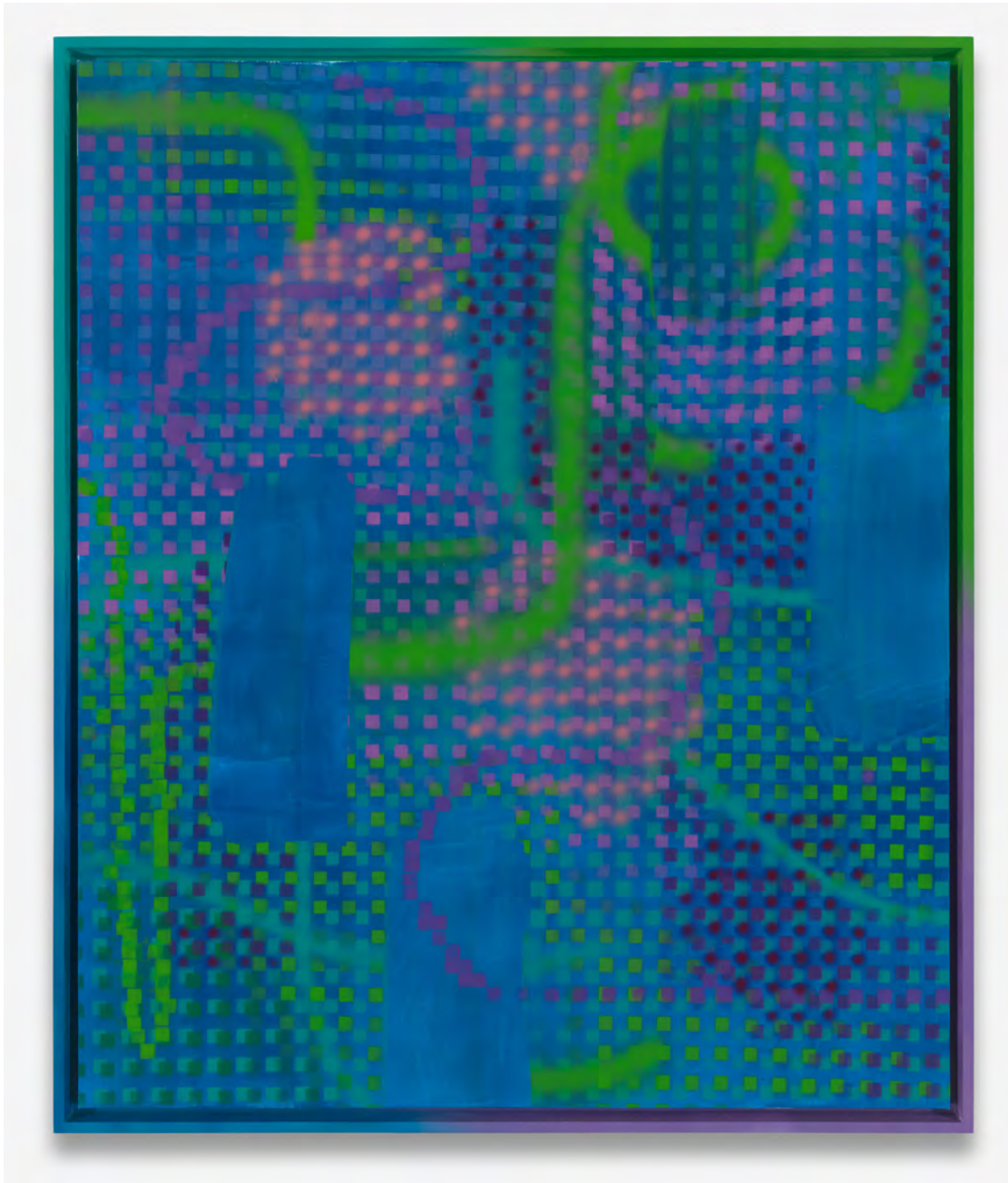
KELTIE FERRIS  
*Uproar Downroar*, 2017  
Oil and acrylic on canvas 72 by 60 in. 182.9 by 152.4 cm.  
(MI&N 13982-A)

Inquire for Pricing and Availability:

HOLLY BAXTER  
& ASSOCIATES

[HOLLY@HOLLYBAXTERANDASSOCIATES.COM](mailto:HOLLY@HOLLYBAXTERANDASSOCIATES.COM)





**KELTIE FERRIS**

*Water Lilies*, 2020-2021

Oil on canvas in the artist's frame

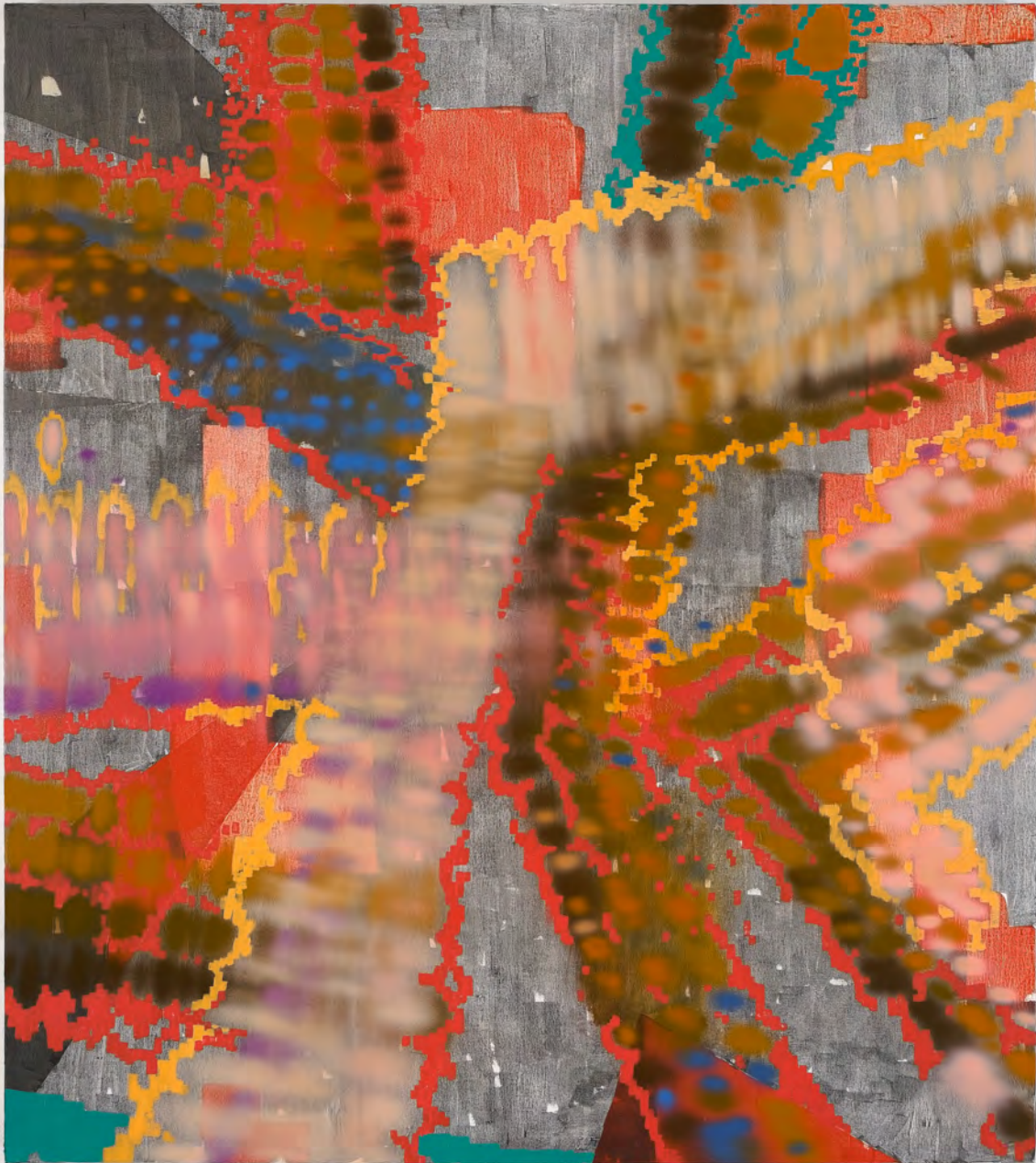
Canvas: 72 by 60 in. 182.9 by 152.4 cm. Framed: 75 by 63 by 3  
in. 190.5 by 160 by 7.6 cm.

(MI&N 16965)

Inquire for Pricing and Availability:

HOLLY BAXTER  
& ASSOCIATES

[HOLLY@HOLLYBAXTERANDASSOCIATES.COM](mailto:HOLLY@HOLLYBAXTERANDASSOCIATES.COM)



KELTIE FERRIS  
*R-E-A-C-H*, 2012  
Oil and acrylic on canvas  
90 by 80 in. 228.6 by 203.2 cm.  
(MI&N 10639-A)

Inquire for Pricing and Availability:

HOLLY BAXTER  
& ASSOCIATES

[HOLLY@HOLLYBAXTERANDASSOCIATES.COM](mailto:HOLLY@HOLLYBAXTERANDASSOCIATES.COM)





NANCY GRAVES  
*I-17-94*, 1994  
Cast glass and patinated bronze  
13 1/2 by 16 1/2 by 14 in. 34.3 by 41.9 by 35.6 cm.  
(MI&N 13119)

Inquire for Pricing and Availability:

HOLLY BAXTER  
& ASSOCIATES

[HOLLY@HOLLYBAXTERANDASSOCIATES.COM](mailto:HOLLY@HOLLYBAXTERANDASSOCIATES.COM)





NANCY GRAVES  
*Untitled (White)*, 1974  
Watercolor, oil, graphite and acrylic on paper  
Two sheets, overall: 22 1/2 by 60 in. 57.2 by 152.4 cm.  
(MI&N 15119)

Inquire for Pricing and Availability:

HOLLY BAXTER  
& ASSOCIATES

[HOLLY@HOLLYBAXTERANDASSOCIATES.COM](mailto:HOLLY@HOLLYBAXTERANDASSOCIATES.COM)



NANCY GRAVES  
*Xola*, 1977  
Oil on canvas  
64 by 88 in. 162.6 by 223.5 cm.  
(MI&N 12393)

Inquire for Pricing and Availability:

HOLLY BAXTER  
& ASSOCIATES

[HOLLY@HOLLYBAXTERANDASSOCIATES.COM](mailto:HOLLY@HOLLYBAXTERANDASSOCIATES.COM)





KARL HAENDEL  
*Lynx 2*, 2021  
Graphite and ink on paper  
45 by 62 1/2 in. 114.3 by 158.8 cm. (MI&N 17006)

Inquire for Pricing and Availability:

HOLLY BAXTER  
& ASSOCIATES

[HOLLY@HOLLYBAXTERANDASSOCIATES.COM](mailto:HOLLY@HOLLYBAXTERANDASSOCIATES.COM)





CHRIS JOHANSON  
*Absorption Unit*, 2002  
Tempera on wood 12 1/4 by 20 1/2 by 3 1/2 in. 31.1 by 52.1 by  
8.9 cm.  
(MI&N 16471)

Inquire for Pricing and Availability:

HOLLY BAXTER  
& ASSOCIATES

[HOLLY@HOLLYBAXTERANDASSOCIATES.COM](mailto:HOLLY@HOLLYBAXTERANDASSOCIATES.COM)



CHRIS JOHANSON  
*Cents #4*, 2016/17  
Acrylic and household paint on found wood  
66 by 52 1/2 in. 167.6 by 133.4 cm.  
(MI&N 14040)

Inquire for Pricing and Availability:

HOLLY BAXTER  
& ASSOCIATES

[HOLLY@HOLLYBAXTERANDASSOCIATES.COM](mailto:HOLLY@HOLLYBAXTERANDASSOCIATES.COM)



CHRIS JOHANSON  
*Magic Right Now*, 2001  
Acrylic on wood 12 3/8 by 48 by 4 in. 31.4 by 121.9 by 10.2 cm.  
(MI&N 16470)

Inquire for Pricing and Availability:

HOLLY BAXTER  
& ASSOCIATES

[HOLLY@HOLLYBAXTERANDASSOCIATES.COM](mailto:HOLLY@HOLLYBAXTERANDASSOCIATES.COM)





CHRIS JOHANSON

*Snake and Killroy (chair) Holding a Dying Star (ottoman), 2014*

Found wood, cushions

Chair: 33 1/4 by 18 1/2 by 20 3/8 in. 84.5 by 47 by 51.8 cm.

Ottoman: 21 1/2 by 16 3/8 by 16 in. 54.6 by 41.6 by 40.6 cm.

(MI&N 12350)

Inquire for Pricing and Availability:

HOLLY BAXTER  
& ASSOCIATES

[HOLLY@HOLLYBAXTERANDASSOCIATES.COM](mailto:HOLLY@HOLLYBAXTERANDASSOCIATES.COM)



MARY KELLY  
*Peace is the only shelter*, 2019  
Duratrans print in lightbox, ed. 2/2 plus 1 AP  
67 7/8 by 45 1/2 by 2 3/4 in. 172.4 by 115.6 by 7 cm.  
(MI&N 15865)

Inquire for Pricing and Availability:

HOLLY BAXTER  
& ASSOCIATES

[HOLLY@HOLLYBAXTERANDASSOCIATES.COM](mailto:HOLLY@HOLLYBAXTERANDASSOCIATES.COM)



MARTIN KERSELS  
*Desert Fire*, 2020  
Colored pencil on vintage lobby card  
11 by 14 in. 27.9 by 35.6 cm.  
(MI&N 16753)

Inquire for Pricing and Availability:

HOLLY BAXTER  
& ASSOCIATES

[HOLLY@HOLLYBAXTERANDASSOCIATES.COM](mailto:HOLLY@HOLLYBAXTERANDASSOCIATES.COM)





MARTIN KERSELS  
*Horse Power*, 2020  
Colored pencil on vintage lobby card  
11 by 14 in. 27.9 by 35.6 cm.  
(MI&N 16757)

Inquire for Pricing and Availability:

HOLLY BAXTER  
& ASSOCIATES

[HOLLY@HOLLYBAXTERANDASSOCIATES.COM](mailto:HOLLY@HOLLYBAXTERANDASSOCIATES.COM)



MARTIN KERSELS  
*Octopus Express*, 2020  
Colored pencil on vintage lobby card  
11 by 14 in. 27.9 by 35.6 cm.  
(MI&N 16769)

Inquire for Pricing and Availability:

HOLLY BAXTER  
& ASSOCIATES

[HOLLY@HOLLYBAXTERANDASSOCIATES.COM](mailto:HOLLY@HOLLYBAXTERANDASSOCIATES.COM)





MARTIN KERSELS  
*Wild Bunch*, 2020  
Colored pencil on vintage lobby card  
11 by 14 in. 27.9 by 35.6 cm.  
(MI&N 16764)

Inquire for Pricing and Availability:

HOLLY BAXTER  
& ASSOCIATES

[HOLLY@HOLLYBAXTERANDASSOCIATES.COM](mailto:HOLLY@HOLLYBAXTERANDASSOCIATES.COM)





KIKI KOGELNIK  
*Dynamite Darling*, 1972  
Oil and acrylic on canvas  
72 by 48 in. 182.9 by 121.9 cm.  
(MI&N 15889)

Inquire for Pricing and Availability:

HOLLY BAXTER  
& ASSOCIATES

[HOLLY@HOLLYBAXTERANDASSOCIATES.COM](mailto:HOLLY@HOLLYBAXTERANDASSOCIATES.COM)



KIKI KOGELNIK  
*Untitled*, c. 1964  
Oil on canvas  
23 by 16 in. 58.4 by 40.6 cm.  
(MI&N 15825)

Inquire for Pricing and Availability:

HOLLY BAXTER  
& ASSOCIATES

[HOLLY@HOLLYBAXTERANDASSOCIATES.COM](mailto:HOLLY@HOLLYBAXTERANDASSOCIATES.COM)



ANNETTE LEMIEUX

*Bad Habits*, 2015

Pigmented ink print on paper, ed. 1/3 plus 1 AP

36 1/4 by 54 1/2 in. 92.1 by 138.4 cm.

(MI&N 15374)

Inquire for Pricing and Availability:

HOLLY BAXTER  
& ASSOCIATES

[HOLLY@HOLLYBAXTERANDASSOCIATES.COM](mailto:HOLLY@HOLLYBAXTERANDASSOCIATES.COM)





ANNETTE LEMIEUX  
*Foot Play: Paintin'*, 1997  
Wax with paint brush  
Installed dimensions: 6 1/8 by 3 1/2 by 14 1/4 in. 15.6  
by 8.9 by 36.2 cm  
(MI&N 17185)

Inquire for Pricing and Availability:

HOLLY BAXTER  
& ASSOCIATES

[HOLLY@HOLLYBAXTERANDASSOCIATES.COM](mailto:HOLLY@HOLLYBAXTERANDASSOCIATES.COM)



ANNETTE LEMIEUX

*Nixon*, 1995

Photolithograph on Somerset white paper, ed. 12/18 plus 1 AP

24 5/8 x 18 5/8 in 62.5 x 47.3 cm.

(MI&N 16527)

Inquire for Pricing and Availability:

HOLLY BAXTER  
& ASSOCIATES

[HOLLY@HOLLYBAXTERANDASSOCIATES.COM](mailto:HOLLY@HOLLYBAXTERANDASSOCIATES.COM)



ANNETTE LEMIEUX

*Relax*, 2008

Acrylic silkscreen ink on wooden panel

38 1/2 by 26 1/2 in. 97.8 by 67.3 cm.

(MI&N 15378)

Inquire for Pricing and Availability:

HOLLY BAXTER  
& ASSOCIATES

[HOLLY@HOLLYBAXTERANDASSOCIATES.COM](mailto:HOLLY@HOLLYBAXTERANDASSOCIATES.COM)





ANNETTE LEMIEUX

*Wound*, 1991

Head form made from linen, metal tacks and metal base with  
oil paint on wood base

64 x 11 1/4 x 11 in 162.6 x 28.6 x 27.9 cm including wood base  
(MI&N 15376)

Inquire for Pricing and Availability:

HOLLY BAXTER  
& ASSOCIATES

[HOLLY@HOLLYBAXTERANDASSOCIATES.COM](mailto:HOLLY@HOLLYBAXTERANDASSOCIATES.COM)



EDDIE MARTINEZ

*Untitled, 2021*

Acrylic paint, spray paint, Sharpie, debris on paper with paper collage

17 7/8 x 26 5/8 in. 45.4 x 67.6 cm (MI&N 17179)

Inquire for Pricing and Availability:

HOLLY BAXTER  
& ASSOCIATES

[HOLLY@HOLLYBAXTERANDASSOCIATES.COM](mailto:HOLLY@HOLLYBAXTERANDASSOCIATES.COM)



EDDIE MARTINEZ

*Untitled*, 2021

Acrylic paint, packing tape and debris on paper

19 1/4 x 25 1/8 in. 48.9 x 63.8 cm

(MI&N 17180)

Inquire for Pricing and Availability:

HOLLY BAXTER  
& ASSOCIATES

[HOLLY@HOLLYBAXTERANDASSOCIATES.COM](mailto:HOLLY@HOLLYBAXTERANDASSOCIATES.COM)





POPE.L

*Dunce Cap*, 2015

Plywood letter cutouts, hot glue and corrugated plastic

40 1/2 by 22 3/4 by 22 3/4 in. 102.9 by 57.8 by 57.8 cm.

(MI&N 13137)

Inquire for Pricing and Availability:

HOLLY BAXTER  
& ASSOCIATES

[HOLLY@HOLLYBAXTERANDASSOCIATES.COM](mailto:HOLLY@HOLLYBAXTERANDASSOCIATES.COM)



POPE.L  
*Calendar, 2020*  
Acrylic, oil, oil stick, ink, ballpoint pen and charcoal on paper  
Thirty sheets, each: 12 by 9 in. 30.5 by 22.9 cm.  
(MI&N 16891)

Inquire for Pricing and Availability:

HOLLY BAXTER  
& ASSOCIATES

[HOLLY@HOLLYBAXTERANDASSOCIATES.COM](mailto:HOLLY@HOLLYBAXTERANDASSOCIATES.COM)



POPE.L

*Fushia Jesus*, 2017-18

Acrylic, graphite, ballpoint, charcoal, ink, and matte medium  
on panel

16 by 12 by 1 1/2 in. 40.6 by 30.5 by 3.8 cm.

(MI&N 15660)

Inquire for Pricing and Availability:

HOLLY BAXTER  
& ASSOCIATES

[HOLLY@HOLLYBAXTERANDASSOCIATES.COM](mailto:HOLLY@HOLLYBAXTERANDASSOCIATES.COM)





POPE.L

*Fushia Pussy*, 2017-18

Acrylic, graphite, charcoal, ink, and matte medium on panel

16 by 12 by 1 1/2 in. 40.6 by 30.5 by 3.8 cm.

(MI&N 15661)

Inquire for Pricing and Availability:

HOLLY BAXTER  
& ASSOCIATES

[HOLLY@HOLLYBAXTERANDASSOCIATES.COM](mailto:HOLLY@HOLLYBAXTERANDASSOCIATES.COM)



POPE.L  
*Gray People All Sound*, 2014  
Oil and acrylic on paper  
12 5/8 by 10 3/4 in. 32.1 by 27.3 cm. (MI&N 14505)

Inquire for Pricing and Availability:

HOLLY BAXTER  
& ASSOCIATES

HOLLY@HOLLYBAXTERANDASSOCIATES.COM





POPE.L  
*Gray People Peonie*, 2014  
Oil and acrylic on paper  
12 5/8 by 10 3/4 in. 32.1 by 27.3 cm.  
(MI&N 14504)

Inquire for Pricing and Availability:

HOLLY BAXTER  
& ASSOCIATES

[HOLLY@HOLLYBAXTERANDASSOCIATES.COM](mailto:HOLLY@HOLLYBAXTERANDASSOCIATES.COM)



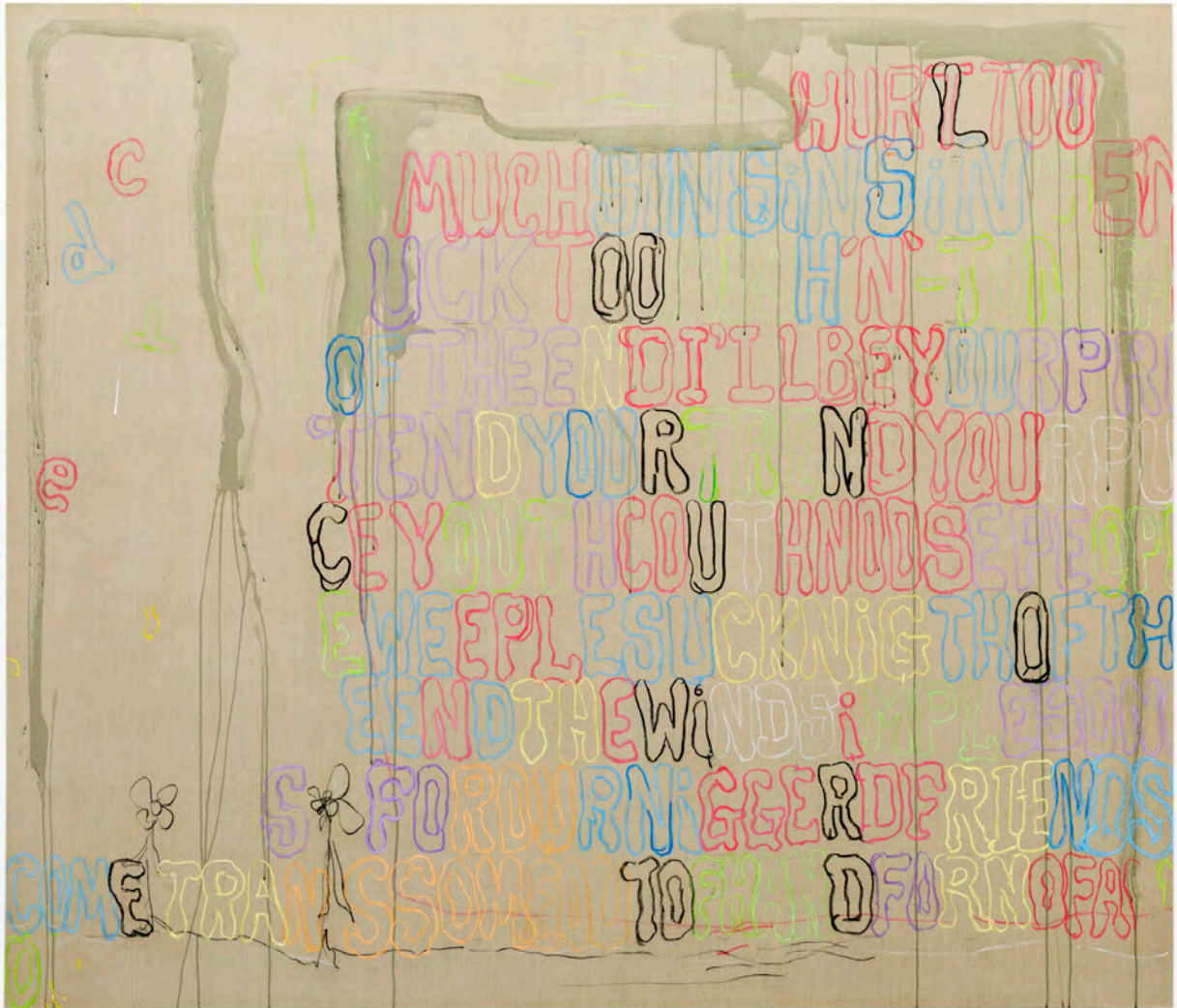


POPE.L  
*Gray People Sale of the Last of the Gas Mohican*, 2014  
Oil and acrylic on paper  
11 7/8 by 7 1/8 in. 30.2 by 18.1 cm.  
(MI&N 14502)

Inquire for Pricing and Availability:

HOLLY BAXTER  
& ASSOCIATES

[HOLLY@HOLLYBAXTERANDASSOCIATES.COM](mailto:HOLLY@HOLLYBAXTERANDASSOCIATES.COM)



POPE.L

*I'll Be Your Pretend*, 2016-2017

Acrylic, chalk, charcoal, graphite and tape on linen

72 by 84 by 3 in. 182.9 by 213.4 by 7.6 cm.

(MI&N 13857)

Inquire for Pricing and Availability:

HOLLY BAXTER  
& ASSOCIATES

[HOLLY@HOLLYBAXTERANDASSOCIATES.COM](mailto:HOLLY@HOLLYBAXTERANDASSOCIATES.COM)



POPE.L

*Tan People are a Micro Climate*, 2016

Acrylic, china marker, ink, ballpoint and flash on paper with  
painted push pins in wooden artist frame

14 by 11 in. 35.6 by 27.9 cm.

(MI&N 14520)

Inquire for Pricing and Availability:

HOLLY BAXTER  
& ASSOCIATES

[HOLLY@HOLLYBAXTERANDASSOCIATES.COM](mailto:HOLLY@HOLLYBAXTERANDASSOCIATES.COM)





POPE.L

*Tan People Bleach*, 2016

Acrylic, china marker, ink and pencil on paper with painted  
push pins in wooden artist frame

14 by 11 in. 35.6 by 27.9 cm.

(MI&N 14521)

Inquire for Pricing and Availability:

HOLLY BAXTER  
& ASSOCIATES

[HOLLY@HOLLYBAXTERANDASSOCIATES.COM](mailto:HOLLY@HOLLYBAXTERANDASSOCIATES.COM)



POPE.L

*Unca Levert*, 1998

10 Bottles of Wild Irish Rose, pair of sandals and photocopy on  
backing board on wooden shelf

12 by 48 by 6 in. 30.5 by 121.9 by 15.2 cm.

(MI&N 16551)

Inquire for Pricing and Availability:

HOLLY BAXTER  
& ASSOCIATES

[HOLLY@HOLLYBAXTERANDASSOCIATES.COM](mailto:HOLLY@HOLLYBAXTERANDASSOCIATES.COM)



AMANDA ROSS-HO  
*Untitled Findings (ACCESS): Zivilstandsamt, Basel #2, 2017*  
Milled and plated aluminum  
2 parts, each: 22 1/2 by 9 3/4 by 7/8 in. 57.2 by 24.8 by 2.2 cm.  
(MI&N 14134)

Inquire for Pricing and Availability:

HOLLY BAXTER  
& ASSOCIATES

[HOLLY@HOLLYBAXTERANDASSOCIATES.COM](mailto:HOLLY@HOLLYBAXTERANDASSOCIATES.COM)



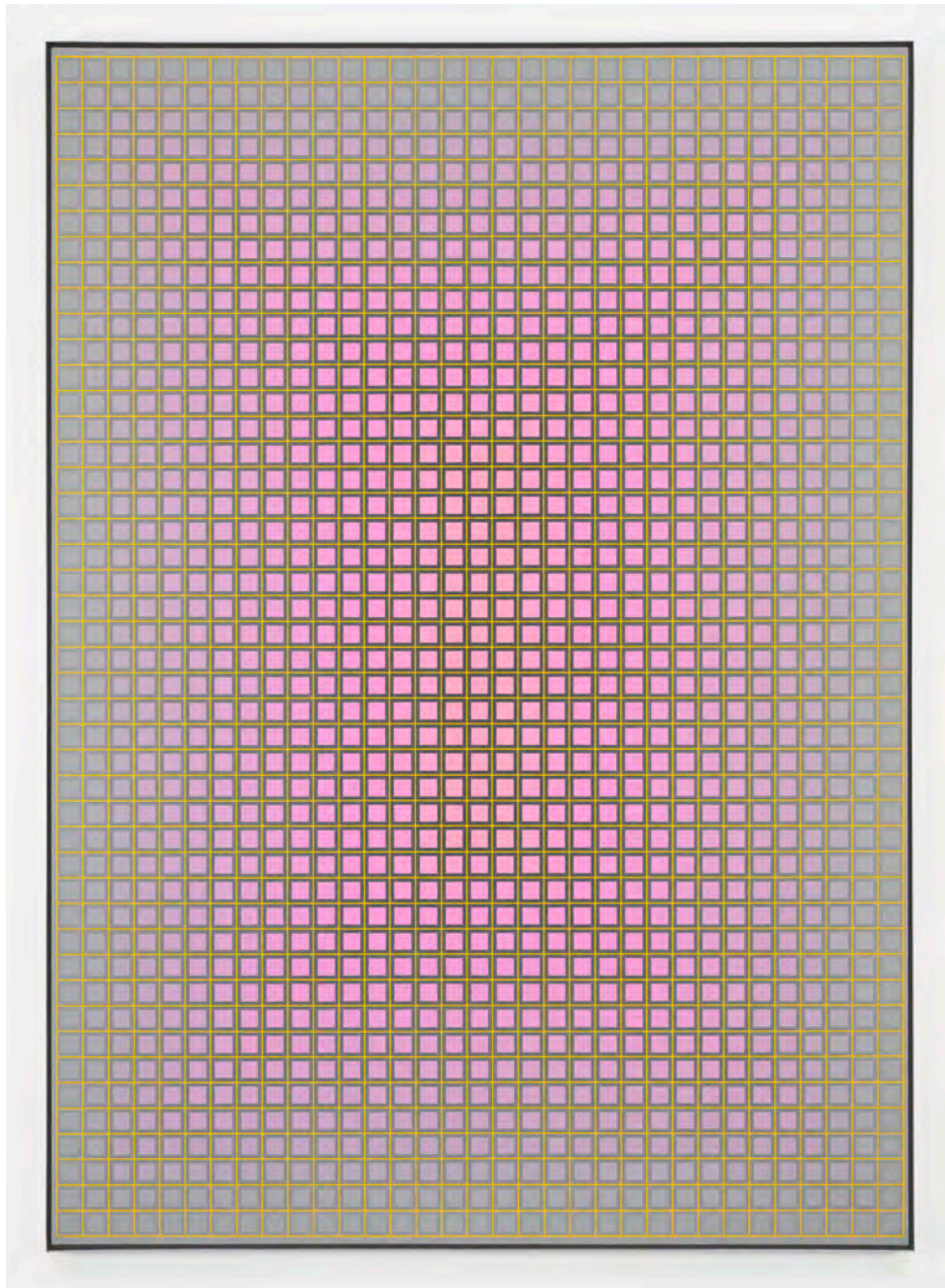


JACOLBY SATTERWHITE  
*Room for Demoiselle Two*, 2019  
UV pigment on aluminum, ed. of two plus one AP  
47 by 80 in. 119.4 by 203.2 cm.  
(MI&N 16113)

Inquire for Pricing and Availability:

HOLLY BAXTER  
& ASSOCIATES

[HOLLY@HOLLYBAXTERANDASSOCIATES.COM](mailto:HOLLY@HOLLYBAXTERANDASSOCIATES.COM)



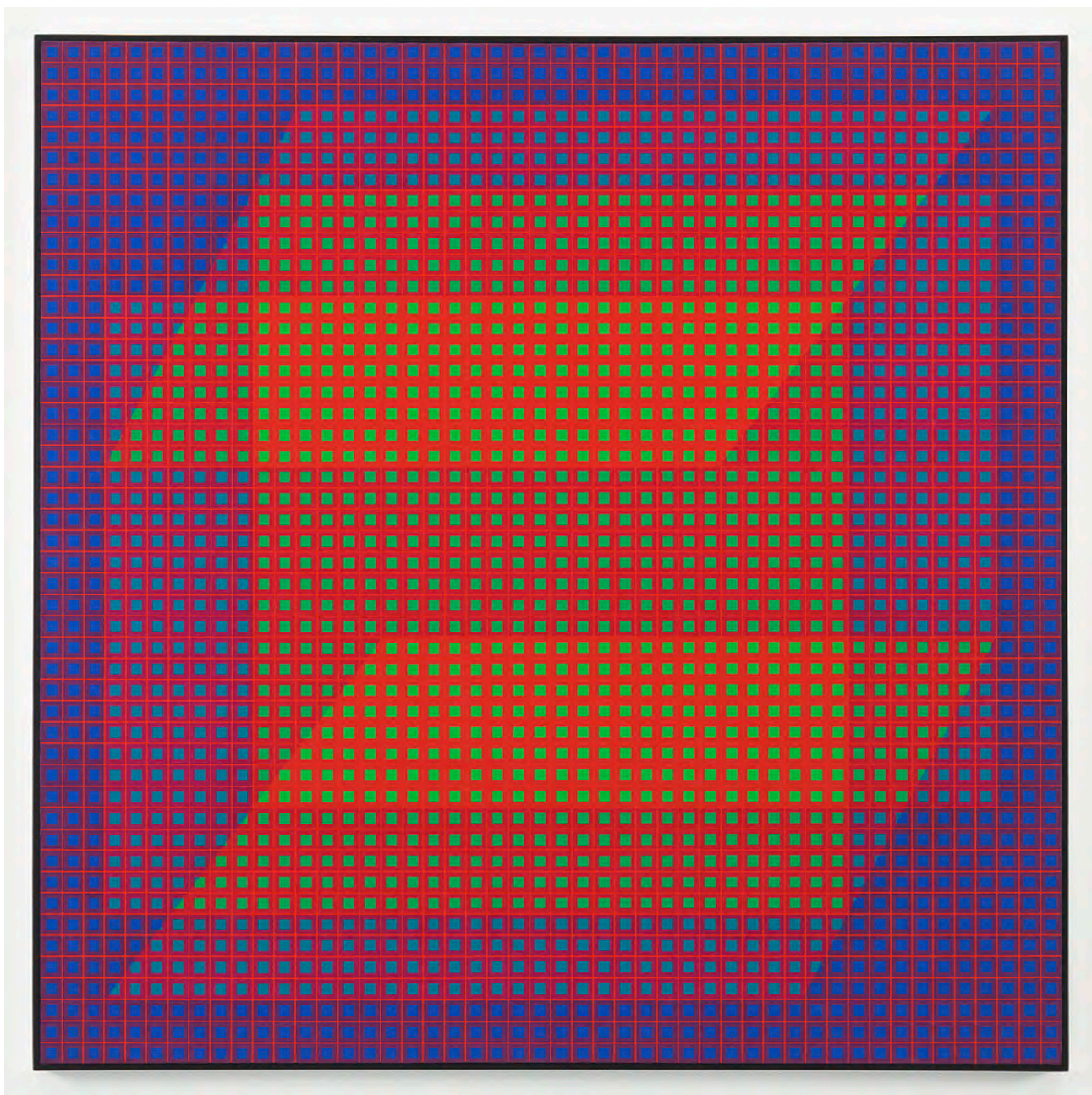
JULIAN STANCZAK  
*Glow*, 1976  
Acrylic on canvas  
70 1/8 by 50 1/8 in. 178.1 by 127.3 cm. (MI&N 11045)

Inquire for Pricing and Availability:

HOLLY BAXTER  
& ASSOCIATES

[HOLLY@HOLLYBAXTERANDASSOCIATES.COM](mailto:HOLLY@HOLLYBAXTERANDASSOCIATES.COM)





JULIAN STANCZAK  
*Winged*, 1973  
Acrylic on canvas  
48 1/16 by 48 1/16 in. 122.1 by 122.1 cm.  
(MI&N 12121)

Inquire for Pricing and Availability:

HOLLY BAXTER  
& ASSOCIATES

[HOLLY@HOLLYBAXTERANDASSOCIATES.COM](mailto:HOLLY@HOLLYBAXTERANDASSOCIATES.COM)





JESSICA STOCKHOLDER  
*Assist #4: Carved Spaces [JS 702]*, 2016  
Painted steel  
87 1/2 by 61 by 64 in. 222.3 by 154.9 by 162.6 cm. (MI&N  
13574)

Inquire for Pricing and Availability:

HOLLY BAXTER  
& ASSOCIATES

[HOLLY@HOLLYBAXTERANDASSOCIATES.COM](mailto:HOLLY@HOLLYBAXTERANDASSOCIATES.COM)

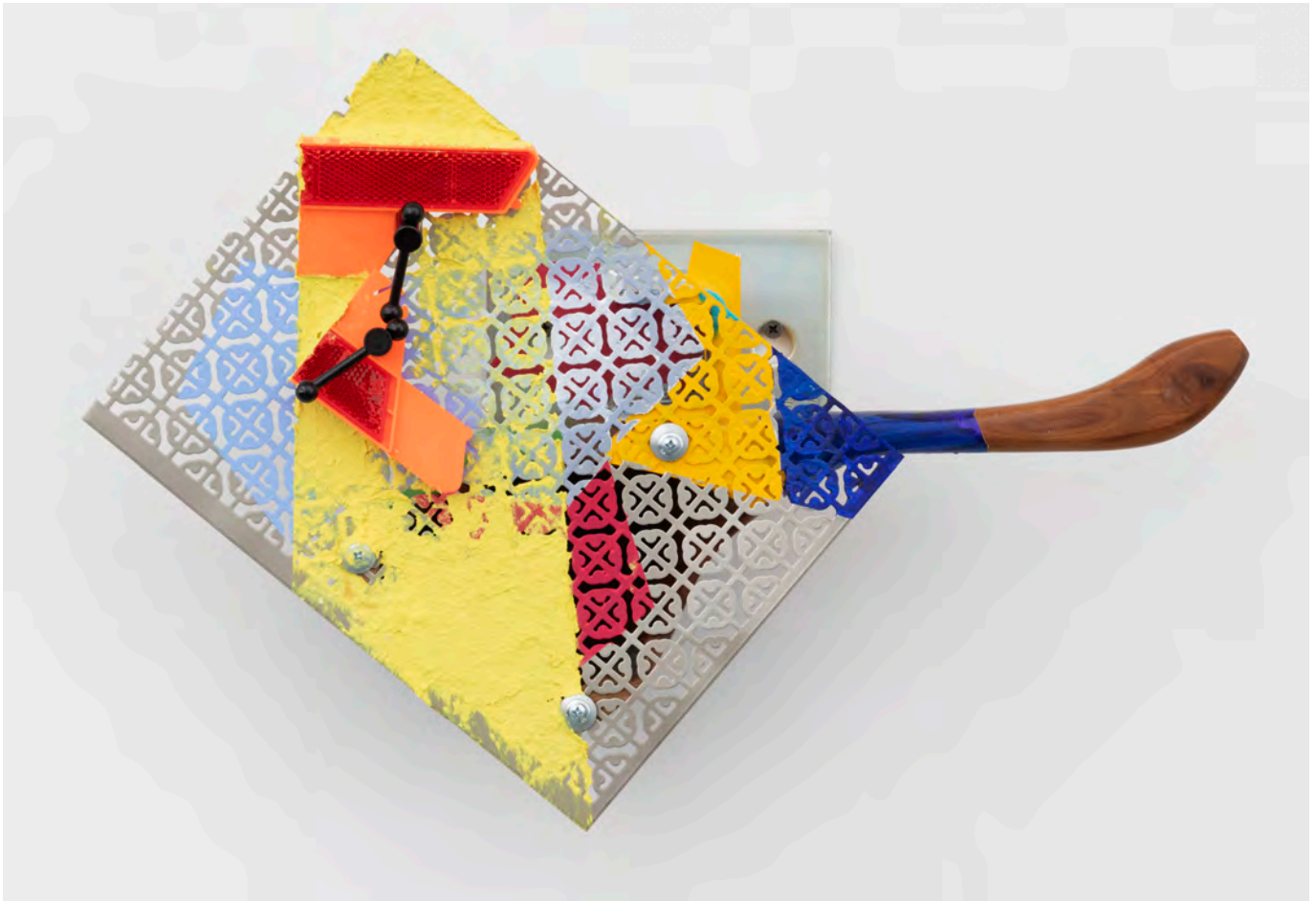


JESSICA STOCKHOLDER  
*Skipping a Beat [JS 786], 2019*  
Wooden fan blades, plastic infused wooden spoon, plastic part,  
hardware, wood covered panel, oil paint and acrylic paint  
16 by 16 by 3 1/2 in. 40.6 by 40.6 by 8.9 cm.  
(MI&N 16932)

Inquire for Pricing and Availability:

HOLLY BAXTER  
& ASSOCIATES

[HOLLY@HOLLYBAXTERANDASSOCIATES.COM](mailto:HOLLY@HOLLYBAXTERANDASSOCIATES.COM)



JESSICA STOCKHOLDER

*Cardinal Direction [JS 843], 2020*

Hardware, perforated metal sheet, plastic reflector, paper  
maché, wooden bowl with handle, oil paint and acrylic paint

13 1/4 by 19 1/4 by 6 in. 33.7 by 48.9 by 15.2 cm.

(MI&N 16897)

Inquire for Pricing and Availability:

HOLLY BAXTER  
& ASSOCIATES

[HOLLY@HOLLYBAXTERANDASSOCIATES.COM](mailto:HOLLY@HOLLYBAXTERANDASSOCIATES.COM)





JESSICA STOCKHOLDER  
*Packing a Punch in Outer Space [JS 858], 2021*  
Vinyl tarp, yarn, metal handle, cloth, hardware, thread and  
string  
67 x 33 x 3 in 170.2 x 83.8 x 7.6 cm  
(MI&N 17102)

Inquire for Pricing and Availability:

HOLLY BAXTER  
& ASSOCIATES

[HOLLY@HOLLYBAXTERANDASSOCIATES.COM](mailto:HOLLY@HOLLYBAXTERANDASSOCIATES.COM)



JESSICA STOCKHOLDER

*Extensions [JS 861]*, 2021

Mirrored cabinet box, bungee cord, hardware, string, rope and  
acrylic paint

59 x 45 x 7 in 149.9 x 114.3 x 17.8 cm

(MI&N 17105)

Inquire for Pricing and Availability:

HOLLY BAXTER  
& ASSOCIATES

[HOLLY@HOLLYBAXTERANDASSOCIATES.COM](mailto:HOLLY@HOLLYBAXTERANDASSOCIATES.COM)



JESSICA STOCKHOLDER

*The Grass is Always Greener [JS 868], 2021*

Truck mirror, resin, Plexiglas, oil paint, acrylic paint,  
hardware, bracket, metal rods and metal mesh speaker cover

21 x 20 x 15 in 53.3 x 50.8 x 38.1 cm.

(MI&N 17162)

Inquire for Pricing and Availability:

HOLLY BAXTER  
& ASSOCIATES

[HOLLY@HOLLYBAXTERANDASSOCIATES.COM](mailto:HOLLY@HOLLYBAXTERANDASSOCIATES.COM)