



CHRYSLER

Chrysler, DeSoto, Dodge & Plymouth
1940-1958

Production Record
Prepared for:

Year: 1953

Make: Chrysler

Randy or Yoshie Kunes

Model: New Yorker Deluxe

Serial #: 7238098

Model Name: 8 (New Yorker Deluxe)

Model Code

Engine # Prefix: C56-2

Plant: Detroit

Starting Serial #: 7222001

Closing Serial #: 7245465

Region: 17 = Pittsburgh, PA

Build Date: April 21, 1953

Dealer: 5515 = Dubois, PA
McAninch Motors

Shipped Date: April 21, 1953

Options:

Paint: 80 = Pearl Gray

Body Type: 46 = Newport

Trim: 77 = Tonga Red Nyplaid Fabric
with Black Leather Bolsters

Body #: 3786

Transmission: 9 = Power Steering with Fluid Torque Drive

Motor #: 55443

Gear Ratio: 1 = Code N/A

Radio: 8 = MoPar 8 Tube & Antenna

Heater: 3 = All Weather Comfort System, Model 600

Glass: 1 = Solex

Shipping Method: Boat

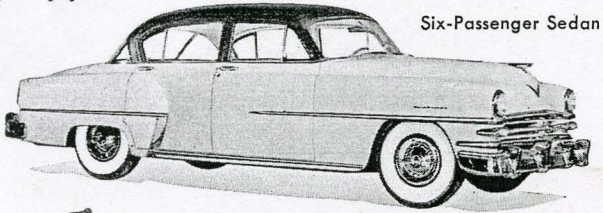


* All information we are able to decode has been provided. N/A indicates we are not able to provide the information.

Prepared 1/18/2013

New Yorker Models

87394



Six-Passenger Sedan

87227



Club Coupe

87217



Newport

87771-2



Town and Country Wagon

87770-1

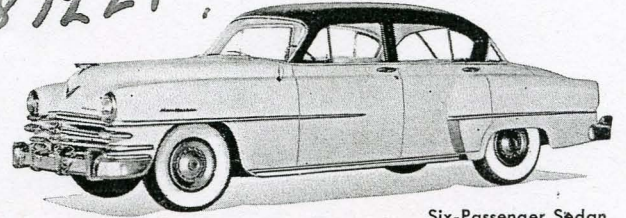


Eight-Passenger Sedan

B-12

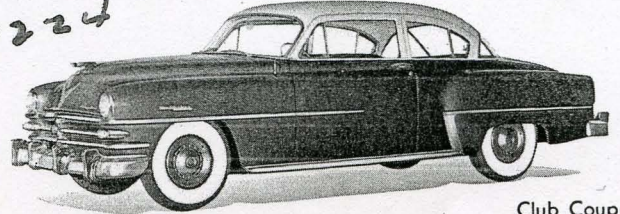
New Yorker De Luxe Models

87221

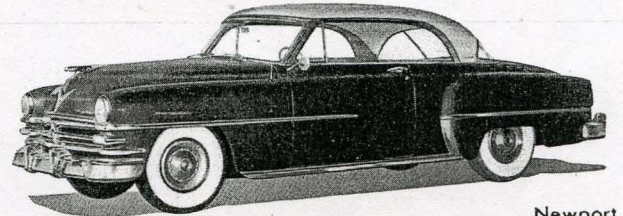


Six-Passenger Sedan

87224



Club Coupe



Newport

87750-3



Convertible Coupe

PRINTED IN U.S.A.—(C)

APRIL, 1953—BODY MODELS—B-13

1953

1953 CHRYSLER COLORS

"DUCO" STOCK, ORDER AND CODE NUMBER

Combination Number

1478★

246-57234 Arctic Blue
 246-0097 White
 246-0751-G Chrome Oxide Green
 246-0594-K Organic Blue
 246-025 Black

5



★DUCO 1478 } Arctic Blue
 DULUX 93-57234 }

1479-H★

260-57235-H Erie Blue "Metalli-Chrome"
 246-0594-K Organic Blue
 246-0751-G Chrome Oxide Green
 246-025 Black
 202-081 Metallic Base (Coarse)

6, 70 (L), 71 (U)



★DUCO 1479-H } Erie Blue
 DULUX 181-10817-K } Metallic

1480-H★

260-57238-H Foliage Green "Metalli-Chrome"
 246-0484 Brown
 246-0594-K Organic Blue
 246-0785-G Blue-Toned Green
 246-064 Ferrite Yellow
 202-081 Metallic Base (Coarse)

21, 74 (L), 75 (U), 79 (L)



★DUCO 1480-H } Foliage Green
 DULUX 181-10721-H } Metallic

1481-H★

260-57239-H Everglades Green "Metalli-Chrome"
 246-0785-G Blue-Toned Green
 246-0484 Brown
 246-025 Black
 202-082 Metallic Base (Fine)

22



★DUCO 1481-H } Everglades Green
 DULUX 181-10722-K } Metallic

1482-H

260-57240-H Cocoa Brown "Metalli-Chrome"
 246-0484 Brown
 246-0312-M Fast Red
 246-025 Black
 202-081 Metallic Base (Coarse)

47, 76 (L), 77 (U)



DUCO 1482-H } Cocoa Brown
 DULUX 181-10723-K } Metallic

1483★

246-57241 Pearl Gray
 246-0097 White
 246-0751-G Chrome Oxide Green
 246-025 Black
 246-064 Ferrite Yellow

35, 70 (U), 71 (L),
 72 (U), 73 (L), 80 (L)



★DUCO 1483 } Pearl Gray
 DULUX 93-57241 }

1484-M

246-57244-M Pimento Red (Bleeder)
 246-0887-M Medium Maroon
 246-0312-M Fast Red
 246-0097 White

61



DUCO 1484-M } Pimento Red
 DULUX 93-57244-M }

1485★

246-57246 Caravan Beige
 246-0097 White
 246-064 Ferrite Yellow
 246-025 Black
 246-0312-M Fast Red

45, 76 (U), 77 (L),
 78 (U), 79 (U)



★DUCO 1485 } Caravan Beige
 DULUX 93-57246 }

★A Du Pont mixing machine formula for DULUX Enamel is available.



See Reverse Side for 1953 Chrysler Color Combination Numbers →

1953 CHRYSLER COLOR COMBINATION NUMBERS

Combination Number	DUCO Code	Color
1	246-2048	Black
5	246-57234	Arctic Blue
6	260-57235-H	Erie Blue "Metalli-Chrome"
7	202-57236	Niagara Blue Metallic
20	246-57329	Vermont Green
21	260-57238-H	Foliage Green "Metalli-Chrome"
22	260-57239-H	Everglades Green "Metalli-Chrome"
35	246-57241	Pearl Gray
37	260-57242-H	Submarine Gray "Metalli-Chrome"
45	246-57246	Caravan Beige
46	202-57245-M	Cinnamon Metallic
47	260-57240-H	Cocoa Brown "Metalli-Chrome"
60	202-57243-M	Hollywood Maroon Metallic
61	246-57244-M	Pimento Red
65	246-57247	Casino Cream
Upper 70	{ 246-57241	Pearl Gray
Lower	{ 260-57235-H	Erie Blue "Metalli-Chrome"
Upper 71	{ 260-57235-H	Erie Blue "Metalli-Chrome"
Lower	{ 246-57241	Pearl Gray
Upper 72	{ 246-57241	Pearl Gray
Lower	{ 260-57242-H	Submarine Gray "Metalli-Chrome"
Upper 73	{ 260-57242-H	Submarine Gray "Metalli-Chrome"
Lower	{ 246-57241	Pearl Gray
Upper 74	{ 246-57329	Vermont Green
Lower	{ 260-57238-H	Foliage Green "Metalli-Chrome"
Upper 75	{ 260-57238-H	Foliage Green "Metalli-Chrome"
Lower	{ 246-57329	Vermont Green
Upper 76	{ 246-57246	Caravan Beige
Lower	{ 260-57240-H	Cocoa Brown "Metalli-Chrome"
Upper 77	{ 260-57240-H	Cocoa Brown "Metalli-Chrome"
Lower	{ 246-57246	Caravan Beige
Upper 78	{ 246-57246	Caravan Beige
Lower	{ 202-57245-M	Cinnamon Metallic
Upper 79	{ 246-57246	Caravan Beige
Lower	{ 260-57238-H	Foliage Green "Metalli-Chrome"
Upper 80	{ 246-2048	Black
Lower	{ 246-57241	Pearl Gray

"DUCO" STOCK, ORDER AND CODE NUMBER

Combination Number

1486★

246-57247 Casino Cream
 246-0097 White
 246-064 Ferrite Yellow
 246-0751-G Chrome Oxide Green
 246-025 Black

65

★DUCO 1486 } Casino Cream
 DULUX 93-57247 }

1487★

246-57329 Vermont Green
 246-0097 White
 246-064 Ferrite Yellow
 246-0785-G Blue-Toned Green
 246-025 Black

20, 74 (U), 75 (L)

★DUCO 1487 } Vermont Green
 DULUX 93-57329 }

1514-H★

260-57242-H Submarine Gray "Metalli-Chrome"
 246-0484 Brown
 246-0312-M Fast Red
 246-0594-K Organic Blue
 246-0785-G Blue-Toned Green
 246-025 Black
 202-082 Metallic Base (Fine)

37, 72 (L), 73 (U)

★DUCO 1514-H } Submarine Gray
 DULUX 181-10724-K } Metallic

1517★

202-57236 Niagara Blue Metallic
 246-051 Milori Blue
 246-025 Black
 202-082 Metallic Base (Fine)

7

★DUCO 1517 } Niagara Blue
 DULUX 181-10755 } Metallic

1584-M

202-57243-M Hollywood Maroon Metallic
 246-0484 Brown
 246-0312-M Fast Red
 246-025 Black
 246-0097 White
 202-081 Metallic Base (Coarse)

60

DUCO 1584-M } Hollywood Maroon
 DULUX 181-10725-M } Metallic

1585-M

202-57245-M Cinnamon Metallic (Bleeder)
 246-0484 Brown
 246-0097 White
 246-0887-M Medium Maroon
 246-0612-K Green Gold Toner
 246-025 Black
 202-081 Metallic Base (Coarse)

46, 78 (L)

DUCO 1585-M } Cinnamon
 DULUX 181-10726-M } Metallic

★A Du Pont mixing machine formula for DULUX Enamel is available.

ORDER ONLY BY "DUCO" STOCK ORDER NUMBER

The following two-tone combinations will be used on 1953 Chrysler production.

Upper Color	Lower Color	Combination Number
Pearl Gray	Erie Blue "Metalli-Chrome"	70
Erie Blue "Metalli-Chrome"	Pearl Gray	71
Pearl Gray	Submarine Gray "Metalli-Chrome"	72
Submarine Gray "Metalli-Chrome"	Pearl Gray	73
Vermont Green	Foliage Green "Metalli-Chrome"	74
Foliage Green "Metalli-Chrome"	Vermont Green	75
Caravan Beige	Cocoa Brown "Metalli-Chrome"	76
Cocoa Brown "Metalli-Chrome"	Caravan Beige	77
Caravan Beige	Cinnamon Metallic	78
Caravan Beige	Foliage Green "Metalli-Chrome"	79
Black	Pearl Gray	80

DUCO tinting colors, for the various formulas, are shown where available. These colors are listed in the order of their importance in the event that tinting is necessary.

Color combination numbers appear on a plate under the hood on the left hand side of the cowl.

NOTE: Most colors in this bulletin are available in both DUCO and DULUX; however, it should be noted that it is not always possible to make close matches in DUCO to DULUX colors and vice versa.

SEE OTHER SIDE FOR 1949-1950-1951 AND 1952 CHRYSLER COLORS

SPECIFY { DAL—For Ditz-Lac Automotive Lacquer
 { DQE—For Ditzco Quickset Enamel

CHRYSLER
1953

Paint
Code

5



DQE-10918-DAL
ARCTIC BLUE

20



DQE-41251-DAL
VERMONT GREEN

35



DQE-31022-DAL
PEARL GRAY

45



DQE-20887-DAL
CARAVAN BEIGE

47



DQE-20886-DAL
COCOA BROWN POLY.

60



DQE-50323-DAL
HOLLYWOOD MAROON POLY.

65



DQE-80588-DAL
CASINO CREAM

8



DQE-10811-DAL
COLUMBIA BLUE POLY.

Paint
Code

21



DQE-41252-DAL
FOLIAGE GREEN POLY.

37



DQE-31023-DAL
SUBMARINE GRAY POLY.

6



DQE-10916-DAL
ERIE BLUE POLY.

46



DQE-20885-DAL
CINNAMON POLY.

7



DQE-10917-DAL
NIAGARA BLUE POLY.

61



DQE-70403-DAL
PIMENTO RED

22



DQE-41253-DAL
EVERGLADES GREEN POLY.

9



DQE-11105-DAL
POTOMAC BLUE

1 DQE-9000-DAL BLACK

(OVER)

DITZLER COLOR DIVISION
PITTSBURGH PLATE GLASS COMPANY

Detroit 4, Michigan

Form 5304 Rev. 3-56

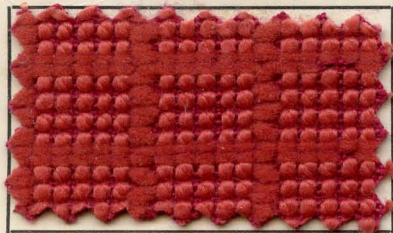
TWO-TONE COMBINATIONS

70(U) DQE-31022-DAL PEARL GRAY	82(U) DQE-41251-DAL VERMONT GREEN
(L) DQE-10916-DAL ERIE BLUE POLY.	(L) DQE- 9000-DAL BLACK
71(U) DQE-10916-DAL ERIE BLUE POLY.	83(U) DQE-41253-DAL EVERGLADES GREEN POLY.
(L) DQE-31022-DAL PEARL GRAY	(L) DQE-41251-DAL VERMONT GREEN
72(U) DQE-31022-DAL PEARL GRAY	84(U) DQE-41251-DAL VERMONT GREEN
(L) DQE-31023-DAL SUBMARINE GRAY POLY.	(L) DQE-41253-DAL EVERGLADES GREEN POLY.
73(U) DQE-31023-DAL SUBMARINE GRAY POLY.	85(U) DQE-31022-DAL PEARL GRAY
(L) DQE-31022-DAL PEARL GRAY	(L) DQE- 9000-DAL BLACK
74(U) DQE-41251-DAL VERMONT GREEN	86(U) DQE-10918-DAL ARCTIC BLUE
(L) DQE-41252-DAL FOLIAGE GREEN POLY.	(L) DQE-10811-DAL COLUMBIA BLUE POLY.
75(U) DQE-41252-DAL FOLIAGE GREEN POLY.	87(U) DQE-10811-DAL COLUMBIA BLUE POLY.
(L) DQE-41251-DAL VERMONT GREEN	(L) DQE-10918-DAL ARCTIC BLUE
76(U) DQE-20887-DAL CARAVAN BEIGE	88(U) DQE-20885-DAL CINNAMON POLY.
(L) DQE-20886-DAL COCOA BROWN POLY.	(L) DQE-20887-DAL CARAVAN BEIGE
77(U) DQE-20886-DAL COCOA BROWN POLY.	89(U) DQE-31022-DAL PEARL GRAY
(L) DQE-20887-DAL CARAVAN BEIGE	(L) DQE-11105-DAL POTOMAC BLUE
78(U) DQE-20887-DAL CARAVAN BEIGE	90(U) DQE-11105-DAL POTOMAC BLUE
(L) DQE-20885-DAL CINNAMON POLY.	(L) DQE-31022-DAL PEARL GRAY
79(U) DQE-20887-DAL CARAVAN BEIGE	91(U) DQE-41252-DAL FOLIAGE GREEN POLY.
(L) DQE-41252-DAL FOLIAGE GREEN POLY.	(L) DQE-80588-DAL CASINO CREAM
80(U) DQE- 9000-DAL BLACK	92(U) DQE-10811-DAL COLUMBIA BLUE POLY.
(L) DQE-31022-DAL PEARL GRAY	(L) DQE-80588-DAL CASINO CREAM
81(U) DQE- 9000-DAL BLACK	93(U) DQE-11105-DAL POTOMAC BLUE
(L) DQE-41251-DAL VERMONT GREEN	(L) DQE-80588-DAL CASINO CREAM

INTERIOR COLORS

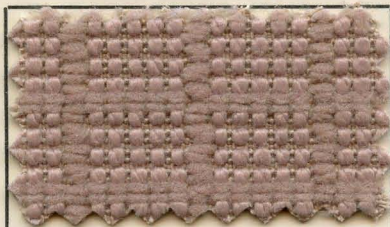
BLACK	DAL- 9000
HORIZON BLUE POLY.	DL -10912
CINNAMON POLY.	DAL-20885
LIGHT TAN POLY.	DL -20537
CAFE-AU-LAIT	DL -20884
CRYSTAL GRAY POLY.	DL -30725
ARGYLE GREEN POLY.	DL -41257
ISLAND GREEN POLY.	DL -41249
DUNHILL MAROON POLY.	DL -50280
TONGA RED	DL -70401
LAKELAND BLUE	DL -10882

In the two-tone combinations above the letter (U) indicates Upper Body, (L) Lower Body.



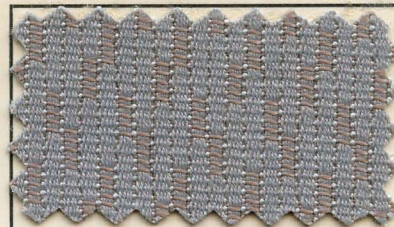
1475

'53 CHRYSLER



1476

'53 CHRYSLER



1477

'53 CHRYSLER



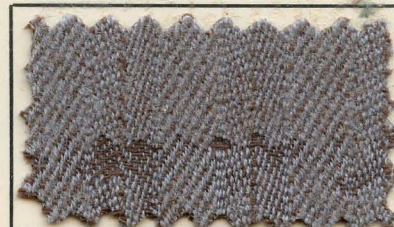
1481

'53 CHRYSLER



1483

'53 CHRYSLER



1446

CHRYSLER



