

02 607		A 454853		03 13 7		31 19		3696.73		2 4267 7 B 123727	
ZONE DEALER		ZONE DEALER		MO. DAY YR.		STATE CD. TO FROM		LABEL PRICE		DIV. MODEL YR. PLY. SERIAL NO.	
CHARGE TO		SMIP TO		INVOICE NO.		INVOICE DATE		MISC. AMT.		VEHICLE IDENTIFICATION NO.	
2999.25		196.23		072.00		2671.78		000.00		PX671653	
TRM AML JNT		EOM AMT.		DEST AMT.		REVENUE AMT.		HOLDBACK		TRANS UNIT NO. % DISC.	
P		3		9		3X63 8V96		423379		R2 235	
AC		RAIL A.TON		DIST		RTG		TAGGED TRM. KEY		IGN. KEY ENGINE UNIT NO.	
3		1		3				8		33 34 35 3C 37 38 39 40 41 42	
43 44 45 46 47 48 49 50 51 52 53 54 55 56 57 58 59 60 61 62 63 64 65 66 67 68 69 70 71 72 73 74 75 76 77 78											

PONTIAC MOTOR DIVISION 1967 CAR BILLING HISTORY GENERAL MOTORS CORP.

CM NO	DATE
INV. NO	DATE
CM NO	DATE
INV. NO	DATE

5729

BUYER OR TAG FOR

DLR. NAME

1967 Tempest - GTO

ORDER DATE

DEALER SIGNATURE

STREET

DISTRICT 13

14-18

ORDER NO. 19-23

No 6751

DLR. TOWN

ZONE & DLR. CODE

BASIC GROUP	342-361-371-474	061	SOLD	101	MODEL 24-27	LOWER COLOR	25	UPPER COLOR OR TOP NO.	29	TRIM	30-32
PROTECTION GRP.	372-374-378 382-431-533	062	STOCK	102							
DECOR GROUP	451-452 & DECOR MLDGS.	064	FLEET	103							
MIRROR GROUP	391-394	071	GMAC	11A							
LAMP GROUP	401-402-404 411-412-421-422	074	ODC	11B							
			CASH	11C							
			ZONE STOCK	11J							
			TRUCK	123							
			TRK-SOAT-TRK	124							
			RAIL	125							
OPTIONS & ACCESSORIES			COL	3	3	3	3	4			
SPRINT OPTION			33	2							

UNDERSTAND DEALER CERTIFIED THAT HE HAS CAREFULLY ARRANGED WITH AN O.K. FINANCER AND THAT SETTLEMENT SHOULD BE MADE THROUGH SUCH ONE PROVIDED.

OTHER ACCESSORIES

QTY	DESCRIPTION	COL	3	3	3	4	
	1 Bbl. 230 Cu. Inch Overhead Cam 6 Cyl. Eng.						
	3 Speed Manual Floor Shift—Code 783						
	Sports Type Shocks & H.D. Stabilizer Bar						
	Sprint Stripes—Coupes & Convertibles Only						
01	Radio—Pushbutton & Manual Antenna	34	2				
	Radio—Pushbutton & Electric Antenna—EXC. STA. WGN.		3				
	Radio—Pushbutton—AM/FM & Man. Antenna		1				
	Radio—Pushbutton—AM/FM & Elec. Ant—EXC. STA. WGN.		5				
	Radio—Manual & Manual Antenna		8				
	Radio—Manual & Electric Antenna—EXC. STA. WGN.		9				
	Rear Seat Speaker		1				
	Verba-Phonic Rear Speaker—N.A. ON STA. WGN.	35	2				
	Stereo Tape Player—AVAIL. ONLY WITH A RADIO		1				
01	Air Cleaner, Dual Stage Heavy Duty—N.A. W. SPRINT	36	1				
	H.D. Vinyl Mat, Luggage Compmt.—N.A. WGN.		2				
01	Custom Foam Cushion—Front—STD. W. BUCKETS	37	1				
	Spare Tire Cover—N.A. ON STATION WAGON		2				
02	Rear Window Defogger—N.A. ON STA. WGN. & CONV.		4				
02	Rear Window Wind Deflector—STA. WGN. ONLY		8				
02	Door Edge Guards	38	2				
01	Mirror, Visor Vanity	39	1				
01	Mirror, Outside Remote Control		1				
01	Lamp, Luggage—N.A. ON STATION WAGON		1				
01	Lamp, Glove Box	40	2				
01	Lamp, Roof Rail & Reading—EXC. CONV.		4				
01	Lamps, Courtesy—STD. ON CONV.		1				
01	Lamp, Ash Tray & Lighter	41	2				
01	Lamp, Underhood	42	1				
01	Lamp, Ignition & Starter Switch		2				
02	Seat Belts, Camion—FRONT & REAR	43	1				
	Seat Belt, Rear Center		2				
	Shoulder Belts, Front Seat		4				
	Cruise Control—N 781-782 & V-4 ONLY		1				
	Safeguard Speedometer—N.A. WITH 442	44	2				
	Rally Gauge Cluster & Tachometer—N.A. WITH 442		4				
	Wire Wheel Discs		2				
	Rally II Wheels	45	3				
	Rally I Wheels		4				
	Custom Wheel Discs		8				
64	Deluxe Wheel Discs	46	1				
64	Deluxe Steering Wheel		2				
	Custom Sports Steering Wheel		1				
	Camion—ORDER WITH BUCKET SEATS ONLY	47	2				
601	Clock, Electric—N.A. WITH 444		4				
	Dual Exhausts—ORD. ON 601 ONLY—STD. ON NO 4 GTO—N.A. STATION WAGON	48	1				
	Exhaust Extension(s)—W/DUAL EXHAUSTS OR SPRINT ONLY		2				
	Delete Stripes		1				
	Deck Lid Release, Remote Control—N.A. ON STA. WGN.	49	2				
	Dual Horns		1				
	Power Steering		1				
	Power Brakes—INCLUDES PEDAL TRIM PKG.	50	2				
	Tilt Steering Wheel—N.A. W. STD. STEERING OR MAN. COLUMN SHIFT		1				
	Custom Carpets		1				
	Luggage Carrier—STATION WAGON ONLY	51	2				
	H.D. 7 Blade Fan & Fan Clutch—V-4 ONLY—STD. W. 382		1				
	Disc Brakes, Front—INCLUDES POWER BRAKES		1				
	Red Plastic Fender Liners—N.A. STA. WGN.	52	2				
	Custom Floor Shift Knob—MANUAL TRANS. ONLY		1				
	Glass, Soft Ray—ALL WINDOWS	53	1				
	Glass, Soft Ray—WINDSHIELD ONLY		2				
	Power Window—Station Wagon Tail Gate	54	1				
	Power Top		1				
	Power Windows	55	1				
	Power Seat—Bench		1				
	Power Seat—Bucket—L.N. ONLY	56	1				
	Head Rests—L.H. & R.H.—BUCKET SEATS ONLY		1				
	Head Rests—L.H. & R.H.—BENCH SEAT ONLY	57	2				
	Reclining Seat—R.H. Bucket Only—INCLUDES 571		8				
	Custom Air Conditioning	58	1				
	Delete Heater—EXCEPT W/AIR CONDITIONING		1				
	Ride & Handling Pkg.—(SPRINGS—SHOCKS & STABILIZER BAR)	62	1				
	Floor Mats—FRONT & REAR		1				
	Floor Mats—FRONT ONLY	63	1				
	Super-Lift Shock Absorbers—REAR ONLY		1				
	Capacitor Discharge Ignition—N.A. W. 322-325 OR REG. FUEL ENG.	67	1				
	Battery—H.D.—STD. WITH AIR COND., 600 ENG. & GTO		1				
	TIRE OPTIONS						Cols. 71-73
			1			CB	
			2			CC	
			4			NC	
			1			MD	
			2			COL	
			1			73	
			4			8	
	TRANSMISSIONS						
			1			78	
			2			78	
			3			78	
			4			78	
			5			78	
			1			80	
			2			80	
			1			80	
			2			80	
			1			80	

1967 Spl. Equip.

DATE _____
ATTACH TO ORIGINAL
CAR ORDER

STREET _____

DLR. TOWN _____

ZIP
CODE _____

PONTIAC LIGHT TRAILER GROUP	081	HYDRA-MATIC-AUTOMATIC						
PONTIAC TEMPEST MEDIUM TRAILER GROUP	082	3 SPEED MANUAL						
PONTIAC HEAVY TRAILER GROUP	084	4 SPEED MANUAL						
PONTIAC LIGHT DUTY POLICE GROUP	091							
PONTIAC HWY. PATROL POLICE GROUP	092							
PONTIAC FREEWAY ENFORCER POLICE GROUP	094							

IN SP. NO.	SPECIAL EQUIPMENT -PONTIAC-	COL	C A T	E X E C	B O N	O P	IN GRP. NO.	SPECIAL EQUIPMENT -TEMPEST-	COL	3	3	3	3
										3	3	7	9
	Deluxe Wheel Discs—W/02 OR 121 ONLY	461						Rear Door Jamb Switches—2223-001 2223-00-001 2223-00-002 2223-00-003 ONLY	534				
	Metallic Brake Linings—W/001-004 ONLY	484						Notch Back Bench Seat—1287-17-07 & STD ONLY TRIMS 119-201-22	568				
14	Split Second Seat—1223-01 TRIMS 311-315 1223-02 TRIM 326 1210 TRIM 301	494					082	Heavy Load Springs & Shocks	622				
	H.D. Power Brakes—N.A. 521	522						H.D. Front & Rear Seats—1287. 02 ONLY	654				
	Rear Door Jamb Switches—1223-01-02 1223-01-03 ONLY	534					082	H.D. Frame—STD. ON CONV.	661				
	S.O. Strato Bucket Seats—1223 TRIMS 301-302 1223 TRIMS 301-302	562						Quick Steering—20 to 1 Ratio—N.A. 501	662				
	Calibrated Speedometer—POLICE USE ONLY N.A. W/002-004	601						Full Transistor Regulator—N.A. W/AIR COND.	664				
	H.D. Stabilizer Bar—W/001-001-004 ONLY	608						H.D. 55 Amp. Alt. & 61 Amp. Battery—STD. 510-102	674				
12	Heavy Load Springs & Shocks	622					082	H.D. Radiator—N.A. 502	681				
91	Hwy. Patrol High Rate Springs & Shocks 1211-04 ONLY	626					082	H.D. 7 Blade Fan—CYL. ONLY STD. 502	684				
92	H.D. Brakes—Aluminum Front Drums—W/002 ONLY	651					082	H.D. 5 Blade Fan & Shroud—CYL. ONLY N.A. 501	688				
	Roof Wire Harness & Plate—1211-12-01-00-1000	652						TIRES		Cols. 71-72			
93	H.D. Seats—FRONT & REAR 1211-00 FRONT ONLY 1211-01	654						7:15 x 14 White Nylon—4 PLY RATING	CL				
91	H.D. Frame—STD. ON CONV.	661						7:15 x 14 White Nylon—6 PLY RATING	CG				
	Full Transistor Regulator—N.A. W/AIR COND.	664						SPECIAL ORDER ENGINE OPTIONS		Cols. 73-74			
	H.D. 62 Amp. Alt. & 70 Amp. Battery—N.A. 501-2 OR 521	672						Ram Air-Man.	THIS ENG. IS AVAIL. ONLY WITH CLOSE RATIO 4 SPEED—CODE 779 IT REQUIRES CODE 771 & 4.13 AXLE SEE POWER TRAIN FOR SPECIFICATIONS		XS	ALL EXC. CALIF. CARS ONLY	
	H.D. 55 Amp. Alt. & 70 Amp. Battery	674						Ram Air-Ryd.	THIS ENG. IS AVAIL. ONLY WITH NVB. TRANS.—CODE 781 IT REQUIRES CODE 771 & 4.13 AXLE SEE POWER TRAIN FOR SPECIFICATIONS		XP	ALL CARS	
92-4	H.D. Radiator & Shroud Ass'y—N.A. 501-2	681						TRANSMISSION		Col. 77			
92-4	Super Cooling H.D. Radiator	682						Close Ratio.	L2H1 FIRST GEAR REQUIRES CODE 516-771 & 3.90 OR 4.13 AXLE SPECIFY DESIRED AXLE IN SPACE BELOW		778		
92-4	H.D. 5 Blade Fan—N.A. 501-2	684						IN GRP. NO.	SPECIAL EQUIPMENT -PIREBRD-		CO		
91	H.D. 5 Blade Fan & Fan Shroud—N.A. 501-2	688							H.D. 55 Amp. Alt. & 61 Amp. Battery—STD. W/002		67		
	SPECIAL ORDER ENGINE OPTIONS		Cols. 73-74						H.D. Radiator—N.A. W/001		68		
									H.D. Fan—N.A. W/001		68		
92-4	2 Bbl. Carb. H.D. Clutch—Reg. Fuel	WB							SPECIAL ORDER AXLES—All Series				
									Check Power Train Charts for Availability, Restrictions and Additional Items Which May Be Required with Special Order Axles Indicate Ratio Desired in Space Below.				

SPECIAL PAINT* — All Series

Lower Color—

Paint No.

Upper Color—

Paint No.

Make of Car & Year Paint Used:

* INDICATES SPECIAL ORDER—ZONE FORWARD TO CENTRAL OFFICE

FACTORY

**NEW
1967**

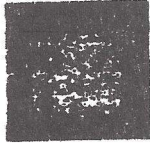
**PONTIAC
EXTERIOR
FINISHES**

A Starlight Black
Two-tone
Combinations
E, P, T



C Cameo Ivory
Two-tone
Combinations
A, D, E, G, K, L, P

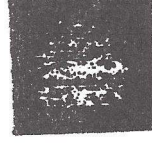
D Moustau Blue
Two-tone
Combinations
C, E



E Fathom Blue
Two-tone
Combinations
C, D



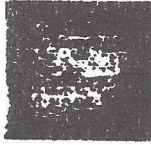
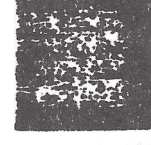
F Tyrol Blue
Two-tone
Combinations
A*, C*
(*upper only)



G Signal Gold
Two-tone
Combinations
A*, C, S*, T
(*upper only)



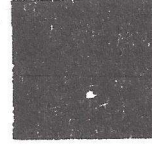
H Linden Green
Two-tone
Combinations
A*, C*
(*upper only)



K Gold Turquoise
Two-tone
Combinations
C, L



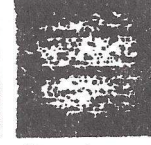
L Marine Turquoise
Two-tone
Combinations
C, K



M Plum Mist
Two-tone
Combinations
C*
(*upper only)



N Burgandy
Two-tone
Combinations
A*, C*
(*upper only)



P Silverglaze
Two-tone
Combinations
A, C



Q Reginald Red
Two-tone
Combinations
A*, C*
(*upper only)



S Cheopagne
Two-tone
Combinations
A*, C*, T
(*upper only)



T Montego Cream
Two-tone
Combinations
A, C*, S*, T
(*upper only)

1967 CONVERTIBLE TOP USAGE CHART

Tempest Custom (23567), Le Mans (23767), GTO (24267), Catalina (25267), Ventura (25267), 2+2 (25267), Bonneville (26267), and Grand Prix (26667)

TOP COLOR CODE NUMBER: 1 Ivory-White 2 Black 4 Blue 5 Turquoise 7 Cream

Black Interior Trim
Numbers 217, 223, 528,
521, 567, 572, 583

A-1, 2, 7 L-1, 2, 5
C-1, 2, 7 M-1, 2
D-1, 2, 4 N-1, 2
E-1, 2, 4 P-1, 2, 7
F-1, 2 R-1, 2
G-1, 2, 7 S-1, 2, 7
H-1, 2 T-1, 2, 7
K-1, 2, 5

Parchment Interior Trim
Numbers 224, 524,
588, 573, 585

A-1, 2, 7 L-1, 2, 5
C-1, 2, 7 M-1, 2
D-1, 2, 4 N-1, 2
E-1, 2, 4 P-1, 2, 7
F-1, 2 R-1, 2
G-1, 2, 7 S-1, 2, 7
H-1, 2 T-1, 2, 7
K-1, 2, 5

Gold Interior Trim
Numbers 221, 518

A-1, 2, 7 S-1, 2, 7
C-1, 2, 7 T-1, 2, 7
G-1, 2, 7

Red Interior Trim
Numbers 218, 225,
519, 522, 588, 594

A-1, 2 P-1, 2
C-1, 2 R-1, 2
N-1, 2

Blue Interior Trim
Numbers 213, 219,
516, 523, 563, 588

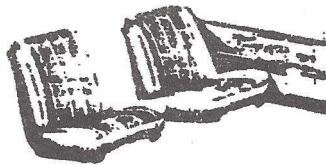
A-1, 2, 4 E-1, 2, 4
C-1, 2, 4 P-1, 2, 4
D-1, 2, 4

Turquoise Interior Trim
Numbers 220, 564

A-1, 2, 5 L-1, 2, 5
C-1, 2, 5 P-1, 2, 5
K-1, 2, 5

Cardova Top Option. Vinyl-coated fabric roof covering in a "grain" texture in Ivory (#1), Black (#2) and Cream (#7) available with all models except 2- and 4-door post sedans and Tempest, Tempest Custom and Tempest Safari Station Wagons. Decar option required on Tempest, Tempest Custom and Catalina Series with Cardova Top Option.

GTO



Spts. Cpe. (24207) Convertible (24267)
Hardtop Coupe (24217)
Streets Bucket Seats

Expanded Merlotide

Interior	Recommended Exterior Colors
218 BLUE	A, C, D, E, P
220 TURQUOISE	A, E, K, L, P
221 GOLD	A, C, G, S, T
223 BLACK	A, E, D, E, F, G, H, K L, M, N, P, R, S, T
224 PARCHMENT	A, E, D, E, F, G, H, K L, M, N, P, R, S, T
225 RED	A, C, R, P, R

1967 PONTIAC POWER TRAIN - GTO

Transmission Type	Item No.	Car Order Engine Code	Engine Size (Cubic Inches)	Carb.	Manifest Engine Code Col. 75-76	Manifest Trans. Code Col. 77	Horse Power	Comp. Ratio	Standard Axle	Econ. Axle	Part. Axle	Special Order Axles					
												3.08(F)	3.23(G)	3.36(H)	3.55(K)	3.90(P)	4.33(S)
3 SPEED MANUAL	1	Std.	400	4 bbl.	WT (WW)	S	335	10.75	3.55 (Exc w/air) 3.23 (w/air)			A	A	A-N		A-N-S-T	A-N-S-T
	2	802	400 HO	4 bbl.	WS (WV)	S	360	10.75	3.55 (Exc w/air) 3.23 (w/air)			A	A	A-N		A-N-S-T	A-N-S-T
4 SPEED MANUAL	3	Std.	400	4 bbl.	WT (W)	W	335	10.75	3.55 (Exc w/air) 3.23 (w/air)			A	A	A-N		A-N-T	A-N-T
	4	802	400 HO	4 bbl.	WS (WV)	W	360	10.75	3.55 (Exc w/air) 3.23 (w/air)			A	A	A-N		A-N-T	A-N-T
	5	Ram Air	400	4 bbl.	XS (YR)	8	360	10.75	4.33 (N A w/air) F-T							A-N-T	A-N-T
TURBOHYDRAMATIC	6	Std.	400	4 bbl.	YS	J	335	10.75	3.36 (Exc w/air) 2.93 (w/air)				A-N	A-N	A-N-S-T	A-N-S-T	
	7	803	400	2 bbl.	XM (XL)	X	225	8.6	2.93 (Exc w/air) 2.78 (w/air)	2.56 (N A w/air)	3.23						
	8	802	400 HO	4 bbl.	YZ	J	360	10.75	3.55 (Exc w/air) 3.23 (w/air)				A-N		A-N-S-T	A-N-S-T	
	9	Ram Air	400	4 bbl.	XP	J	360	10.75	4.33 (N A w/air) T								

LEGEND-

- A - Available
 - N - Non available - w/air conditioning
 - S - Speed-Adapter - Code 591 required
 - T - Safe-T-Track - Code 731 required
- NOTE:** Items S & T Are Extra Cost Options

MANIFEST ENGINE CODES

Engine codes in parentheses are for Calif. cars. All Calif. cars with 803 engines require Code 815. All other Calif. cars require Code 816.

MANIFEST TRANSMISSION CODES (Col. 77)

- 8 4 speed manual - close ratio
- J Hydra-Matic (Exc. 803)
- S 3 speed manual - H.D floor shift
- W 4 speed manual - wide ratio
- X Hydra-Matic - 803 Eng.

AXLE IDENTIFICATION

Ratio	Sales Code Col. 74	Std. Axle Code	Safe-T Track Code
2.78 (38:14)	D	WC	YC
2.93 (42:14)	E	WD	YC
3.08 (40:13)	F	WE	YE
3.23 (42:13)	G	WF	YF
3.36 (37:11)	H	WG	YG
3.55 (38:11)	K	WH	YH
3.90 (38:10)	P		ZK
4.33 (38:9)	S		ZL

There are two methods of identifying the axle ratio in a car. The proper two-letter code, from the chart above, is stamped in the axle housing just to the right of the carrier case and directly below the brake pipe clip. The same code is also applied to the left rear brake drum facing by means of a-sticker.

EXTERIOR COLORS AND CODES

Starlight Black	A
Cameo Ivory	C
Montreux Blue	D
Fathom Blue	E
Tyrol Blue	F
Signal Gold	G
Linden Green	H
Gull Turquoise	I
Mariner Turquoise	L
Rum Blue	M
Burgundy	N
Silverglaze	P

1967

Regimental Red	R
Champagne	S
Montego Cream	T

CORDOVA TOP COLORS AND CODES

Ivory	1
Black	2
Cream	7

FOLDING TOP COLORS AND CODES

Ivory-White	1
Black	2

Blue	4
Turquoise	5
Cream	7

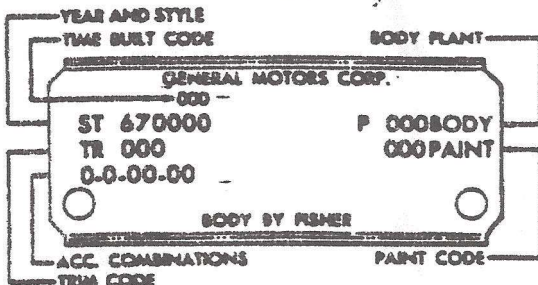
INTERIOR TRIM COLORS AND CODES

Blue	218
Turquoise	220
Gold	221
Black	222
Parchment	224
Red	225
Black	225*
Parchment	228*

*Beach seat interior

ASSEMBLY PLANT CODES

P	Pontiac
K	Kansas City
Z	Fremont
B	Baltimore
G	Frammingham



Example of plate shows the 1967 GTO 442 series (contribution 67) built at Pontiac plant (P).