

CHEVY TRUCKS  LIKE A ROCK

**TAHOE**





# PRISTINE RIVERS. BREATHTAKING VISTAS. CHEVY TAHOE.

Chevy Tahoe has the uncanny ability to go virtually anywhere. It has the most powerful V8 engines in its class. Tahoe 4x4 models have the most towing capacity of any vehicle in their segment. While delivering a remarkable 275 horsepower, the Vortec 4800 V8 SFI engine provides surprising fuel efficiency.<sup>°</sup> And Tahoe can be equipped with an available third row of seats that is light and easier to handle than anything else out there. Chevy Tahoe. From the family of Chevy Trucks — the most dependable, longest-lasting trucks on the road.<sup>†</sup>

<sup>°</sup>Estimated MPG 15 city/20 highway. Based on GM testing. Official EPA numbers not available at time of printing.  
<sup>†</sup>Dependability based on longevity: 1981–July 2000 full-line light-duty truck company registrations. Excludes other GM divisions.

NOTE: Unless otherwise noted, all class claims in this brochure are based on 2001 model year GM Full-Size Utility segment and exclude other GM vehicles.

Throughout this brochure, you'll find invitations to learn more about Tahoe's features by visiting [chevy.com/tahoebrochure](http://chevy.com/tahoebrochure)



YOU ARE A MICROSCOPIC SPECK IN THE UNIVERSE.  
YOU MIGHT AS WELL BE A MICROSCOPIC SPECK  
WITH A CAPABLE SUV.



TAHOE LT

See for yourself the tremendous capability of Tahoe by visiting [chevy.com/tahoebrochure](http://chevy.com/tahoebrochure)



# THERE'S COMFORT. THEN THERE'S COMFORT ON A GRAND SCALE.

The Tahoe LT interior is designed for those who seek a high level of comfort. Heated front bucket seats with Custom Leather seating surfaces are standard and include eight-way power driver and passenger-side adjustments. The instrument panel features clear, concise gauges that are positioned for ideal viewing. And standard electronic climate control and the security of OnStar® make the going anything but tough. Tahoe LT. Settle into a world of total comfort.

\*One-year OnStar Safety and Security service contract is standard on Tahoe LT. Call 1-800-ONSTAR-7 for system limitations and details.

TAHOE LT INTERIOR

For more about the comfort of Tahoe LT, go to [chevy.com/tahoebrochure](http://chevy.com/tahoebrochure)

Chevy Tahoe LT interior in standard Neutral Custom Leather seating surfaces with additional features. Available third-row seat is vinyl when Custom Leather seating surfaces are selected.



# IT'S ALMOST EVERYTHING YOU WOULD EVER WANT FROM AN SUV.



**OnStar** — The one-year OnStar Safety and Security plan standard with Tahoe LT includes air bag notification, emergency and roadside services, theft tracking, remote diagnostics, remote door unlock and AccidentAssist. Call 1-800-ONSTAR-7 for system limitations and details.

**Heated Front Bucket Seats** — For the ultimate in comfort, Tahoe LT comes standard with driver and front-passenger heated bucket seats with Custom Leather seating surfaces. The seats include power lumbar support, power seatback bolsters, articulated head restraints and a two-position driver memory function.

**Select Tahoe LT Standard Features:**

- Electronic climate control.
- OnStar.
- Custom Leather seating surfaces with heated front bucket seats.
- Eight-way power driver and front-passenger seats.
- Two-position driver memory function that recalls two preferred driver settings.
- Power recline, power lumbar and power seatback bolsters.
- AM/FM stereo with dual playback cassette and CD players, rear subwoofer and nine speakers.
- Rear-seat audio controls (headphones not included).
- Color-keyed carpet with carpeted floor mats for all rows.



**Spacious Cargo Area** — For a weekend getaway or an extended vacation, Tahoe models provide the kind of cargo room you need. And for added flexibility, both the second- and available third-row of seats can be flipped and folded forward.

To find out more about Tahoe LT upscale features, visit [chevy.com/tahoebrochure](http://chevy.com/tahoebrochure)



**Heated Front Bucket Seats** — For the ultimate in comfort, Tahoe LT comes standard with driver and front-passenger heated eight-way bucket seats with Custom Leather seating surfaces. The seats include power lumbar support, power seatback bolsters, articulated head restraints and a two-position driver memory function.

**Quality Ride** — The ride in Tahoe is designed to be smooth and quiet. It's due, in part, to a strong modular frame and a five-link rear suspension with upper and lower control arms. A track bar to control side-to-side movements also contributes to the Tahoe ride quality. And LT models are available with Autoride. It varies the amount of shock damping on a real-time basis according to road surfaces, speed, steering, and load conditions.



**Nine-Speaker Audio System** — A standard custom-designed nine-speaker audio system is designed to surround you in sound. The 126-watt system with six-channel amplifier features an eight-inch rear subwoofer sealed in a custom-tuned foam enclosure. And LT models include rear-seat audio controls that let rear-seat passengers listen to a different music source than passengers in the front. Headphones not included.



Chevy Tahoe LT interior in standard Neutral Custom Leather seating surfaces with additional features.



A CIVILIZED APPROACH TO ROUGHING IT.

To find out more about the well-equipped Tahoe LS, visit [chevy.com/tahoebrochure](http://chevy.com/tahoebrochure)

TAHOE LS



10 ▶ FOR MORE INFORMATION, VISIT [chevy.com](http://chevy.com)

Chevy Tahoe LS 4x4 in Forest Green Metallic.



# FIND COMFORT EVEN BEFORE YOU REACH YOUR DESTINATION.

The comfort of the Chevy Tahoe LS interior literally surrounds you and your passengers. And since you never know how many people you'll be carrying, Tahoe LS seating can be configured in many ways.

## Standard Front Bench Custom Cloth Seating

### Standard Six-Passenger Configuration:

- 40/20/40 split-bench front seat.
- 60/40 split-bench second-row seat.

### Available Nine-Passenger Configuration:

- Add 50/50 split-folding third-row of seats.

## Available Front Bucket Custom Cloth Seating

### Available Five-Passenger Configuration:

- Front bucket seats.
- 60/40 split-bench second-row seat.

### Available Eight-Passenger Configuration:

- Add 50/50 split-folding third-row of seats.

## Available Custom Leather Seating Surfaces

### Available Five-Passenger Configuration:

- Front bucket seats.
- 60/40 split-bench second-row seat.

### Available Eight-Passenger Configuration:

- Add vinyl 50/50 split-folding third-row of seats.

To see how versatile the third-row seat is, visit [chevy.com/tahoebrochure](http://chevy.com/tahoebrochure)

Available Chevy Tahoe LS interior with third-row seat package and front bucket seats that provide seating for eight. Shown in Medium Gray Custom Cloth with additional features.



THINK OF IT AS A PLACE TO GO  
FOR INSTANT GRATIFICATION.  
EVERY DAY.

If you want to know more  
about Tahoe LS features, visit  
[chevy.com/tahoebrochure](http://chevy.com/tahoebrochure)

**Rear-Seat Audio Controls** — Rear-seat audio controls are available on Tahoe. They let front and rear passengers enjoy entirely different music sources, at different volumes. Headphones not included.



**Ground-Illuminating Mirrors** — The standard power heated outside mirrors feature a light at the bottom of their surfaces. They illuminate the ground around the front doors for convenient entry and exit.

**Select Tahoe LS Standard Features:**

- Driver and right front-passenger front air bags.°
- Driver and right front-passenger side-impact air bags.°
- AM/FM stereo with compact disc player and nine speakers, including an eight-inch rear subwoofer.
- HomeLink universal transmitter.
- Front and rear air conditioning and heater.
- Remote Keyless Entry with content theft-deterrent system.
- Custom Cloth reclining 40/20/40 split-bench front seat with six-way power driver and passenger-side adjustments, manual lumbar support and center armrest storage.
- Foglamps.
- Side-mounted assist steps.

°Always use safety belts and proper child restraints, even with air bags. Children are safer when properly secured in a rear seat. See the Owner's Manual for more safety information.

**Power Sunroof** — A factory-installed power sunroof is available on all Tahoe models. With just the touch of a button, the tinted-glass panel can be fully opened, closed or set to a vent position. A retractable interior shade is also included.



TAHOE LS FEATURES

Chevy Tahoe LS interior with available third-row seat package and first- and second-row seating surfaces in Neutral Custom Leather.



# YOU COULD RELY ON A ROAD MAP. BUT THAT WOULD DEFEAT ITS PURPOSE ALTOGETHER.

When your ambitions take you far from civilization, Chevy Tahoe Z71 is ready for the journey. Designed for rugged territory, Tahoe Z71 comes with features like 17-inch on-/off-road tires, 17-inch machined-face cast-aluminum wheels, skid plates and Z71 suspension to get you there and back. So go ahead and challenge Tahoe Z71 — because it shares your sense of adventure.



## Select Tahoe Z71 Standard Features:

- 17-inch on-/off-road tires.
- 17-inch machined-face aluminum wheels.
- Specially designed luggage rack with rear roller.
- Body-color grille, bumpers, door handles and mirrors.
- Skid plates.
- OnStar.®
- Locking rear differential.
- Trailering Package.
- Lower rocker moldings.
- Front bucket seats with Custom Leather seating surfaces.
- Tubular assist steps.
- Wheel flares with extensions.
- Z71 suspension.
- Z71 badging.
- Foglamps.



**Z71 Wheels And Tires** — Tahoe Z71 models feature 17-inch machined-face cast-aluminum wheels for a rugged, distinct appearance.

\*One-year OnStar Safety and Security service contract is standard on Tahoe Z71. Call 1-800-ONSTAR-7 for system limitations and details.

To learn more about the off-road capability of Tahoe Z71, visit [chevy.com/tahoebrochure](http://chevy.com/tahoebrochure)



# TO SAY IT'S VERSATILE WOULD BE AN UNDERSTATEMENT.

The adaptable Tahoe fits your busy lifestyle because it does so many things so well. An available third-row 50/50 split-folding bench seat allows Tahoe to accommodate up to nine passengers. And when you aren't carrying nine people, each portion of the rear seat flips and folds out of the way for extra cargo space. Whether it's people or cargo you're hauling — or both — Tahoe delivers its capabilities in countless ways.

**Autotrac 4x4 System** — When AUTO 4WD is engaged, Autotrac automatically transfers power between front and rear wheels whenever rear-wheel slippage is detected. It's standard on all Tahoe 4x4 models.

**Luggage Rack** — Tahoe Z71 models feature a standard luggage rack that includes a roller at the back of its design to help you slide items into place.



**Electronic Traction Assist** — Available on 2WD models, Electronic Traction Assist works with the locking differential to help provide more controlled acceleration on slippery surfaces.

**Cargo Net/Cargo Security Shade** — A standard cargo net helps keep loose items from rolling around in the cargo area. And to keep your possessions out of sight when you're away from your vehicle, a standard cargo shade covers the entire width between wheelwells (cargo shade not included with third-row seat package).



**Rear Door Configurations** — Tahoe can be equipped with either rear panel doors or the available rear liftgate/liftglass — no other competitor offers you this choice.\* The available liftgate is constructed of lightweight aluminum, making it easy to open and close. And the liftglass allows you to "toss in" smaller items like a backpack.

\*Third-row seat requires liftgate.



To take a look at even more versatile features, visit [chevy.com/tahoebrochure](http://chevy.com/tahoebrochure)

**Seating Versatility** — When extra cargo room is needed, the available split-folding third row of seats can be flipped forward — or easily removed — since each half weighs only 44 lbs. In fact, the third-row seat is unlike any other offered in any other truck in its class.



Chevy Tahoe LT interior with available third-row seat package and first- and second-row seating surfaces in Neutral Custom Leather.



# SIMPLY PUT, IT REDEFINES THE ACT OF MUD SLINGING.

The Vortec 4800 V8 SFI and Vortec 5300 V8 SFI engines that power Chevy Tahoe have more horsepower than any V8 engines in their class. The engines are matched to a responsive electronically controlled four-speed automatic that provides nearly seamless shifts. And new for 2002 is an available E85 ethanol-compatible Vortec 5300 V8 SFI engine. With their uncompromising blend of power and dependability, Vortec engines deliver the capability and muscle you need.

For more dirt on Tahoe Vortec power, visit [chevy.com/tahoebrochure](http://chevy.com/tahoebrochure)

TAHOE VORTEC POWER

CHEVY TAHOE POWERTRAINS		
ENGINE	HORSEPOWER @ RPM	TORQUE @ RPM
Vortec 4800 V8 SFI	275 @ 5200	290 lb.-ft. @ 4000
Vortec 5300 V8 SFI	285 @ 5200	325 lb.-ft. @ 4000

**Vortec 4800 V8 SFI** — The Vortec 4800 V8 SFI engine delivers a remarkable 275 horsepower while providing surprising fuel efficiency.\*

\*Estimated MPG 15 city/20 highway. Based on GM testing. Official EPA numbers not available at time of printing.



Standard Vortec 4800 V8 SFI engine with 275 horsepower.





Available Vortec 5300 V8 SFI engine with 285 horsepower.



**Vortec 4800 V8 SFI and Vortec 5300 V8 SFI Engine Common Standard Features:**

- Up to 100,000-mile spark plug replacement intervals.\*
- Five-year or 150,000-mile engine coolant change intervals.†
- Deep-skirt block design to reduce noise, vibration and harshness.
- Large flat surfaces for sealing reliability.

\*Maintenance needs vary with different uses and driving conditions. See the Owner's Manual for more information. †Whichever comes first.



Available in all states except California, the E85 flexible fuel Vortec 5300 V8 SFI engine is designed to operate using gasoline or a mixture of gasoline and up to 85 percent ethanol — a fuel produced from renewable agricultural resources. E85-equipped vehicles are designed to meet the same exhaust emission standards as gasoline, so criteria pollutant levels of hydrocarbon, carbon monoxide and oxides of nitrogen are equivalent. However, ethanol produced from corn blended as E85 achieves over 40 percent reduction in greenhouse emissions.\*

\*Fuel-Cycle Fossil Energy Use and Greenhouse Gas Emissions of Fuel Produced from U.S. Midwest Corn, Argonne National Laboratory, Center for Transportation Research, Produced for Illinois Department of Commerce.



AN AUTHORITATIVE SHOW OF STRENGTH.

TAHOE TOWING



More information about Tahoe  
trailing features can be found  
at [chevy.com/tahoebrochure](http://chevy.com/tahoebrochure)



# MORE POWER FOR THE LONG HAUL.

The Vortec V8 SFI engines in Chevy Tahoe are designed with a broad, flat torque curve for strong pulling power. In fact, Tahoe 4x4 models with the Vortec 5300 V8 SFI engine can tow up to 8,100 lbs. — more than any other vehicle in its class. Trailer-related standard equipment includes a heavy-duty wiring harness and Tow/Haul mode to help make trailering easy and safe.



**Trailering Package** — The available Trailering Package makes hookups fast. The package includes a weight-distributing hitch platform, trailer harness connector, electric brake controller jumper harness and seven-way-to-four-way adapter. Trailering-related standard equipment on all Tahoe models includes Premium suspension and Autotrac 4x4 system (standard on 4x4 models).

## TRAILERING BASICS

Towing a trailer involves all major vehicle systems of your Chevy Truck, including powertrain, steering, suspension, tire and brake systems. Easy and safe trailering requires a properly equipped vehicle, additional trailering equipment and an appropriate trailer. It also requires loading both the vehicle and trailer properly, using

safe driving techniques, meeting regional legal requirements and following break-in and maintenance schedules. For more information, consult the Owner's Manual, speak to a trailering expert at your Chevrolet dealership or visit our web site at [chevy.com](http://chevy.com)

The following charts will assist in determining how to best equip your Chevy Truck for trailering. To help you understand the charts, consider these trailering factors:

**Torque:** Indicates the strength of the engine. Low-end torque reflects how much force is generated to get your vehicle moving.

**Horsepower:** Indicates how much work the engine does at a certain engine speed. At mid- to high-engine rpm, it's what keeps you moving at highway speeds.

**Axle Ratio:** Along with your vehicle's transmission gears, a higher rear-axle ratio contributes to how much available torque and horsepower (mechanical leverage) can be applied to the drive wheels for launch and uphill performance. Higher rear-axle ratios, however, sacrifice fuel economy when not trailering.

**Ball Hitch Trailering:** There are two types of ball hitches. A weight-carrying hitch consists of a ball and coupler with no means to distribute the hitch weight. It is used primarily for lightweight trailers. Heavier trailers, however, require a weight-distributing hitch, which uses spring bars to transfer some of the hitch weight forward onto the tow vehicle's front axle and rearward onto the trailer's axle(s).

**RGAWR and GVWR:** Addition of trailer hitch weight cannot cause vehicle weights to exceed Rear Gross Axle Weight Rating (RGAWR) or Gross Vehicle Weight Rating (GVWR). These ratings can be found on the certification label located on the driver door or door frame.

**GCWR:** The Gross Combination Weight Rating is the total allowable weight of the completely loaded vehicle and trailer. A properly equipped tow vehicle and trailer at the maximum GCWR should be able to accelerate and merge with traffic, climb typical interstate grades at highway speeds, handle the combination on virtually all road surfaces and stop adequately within a reasonable distance.

**Maximum Trailer Rating:** This rating is determined by subtracting the tow vehicle's weight (curb weight) from the GCWR. When a base vehicle (curb) weight is used, additional passengers, equipment and cargo weight reduce this rating.

## TRAILERING CAUTIONS

**NOTE:** Please read this Trailering Caution safety information before trailering with your new truck.

**NOTE:** The safety steps described here are by no means the only precautions to be taken when trailering. See the Owner's Manual for the Chevy Truck of your choice for additional guidelines and trailering tips.

**Trailering Caution:** If you don't use the correct equipment and drive properly, you can lose control of your vehicle when you pull

a trailer. For example, if the trailer is too heavy, your vehicle brakes may be less effective. You and your passengers could be seriously injured. Pull a trailer only after you have taken the following steps.

**Trailer Brakes:** If your trailer weighs more than 2,000 lbs. loaded, then it must have its own adequate brakes. Be sure to read and follow the instructions for the trailer brake controller so that it is installed, adjusted and maintained properly. • Don't tap into your vehicle's brake system if the trailer's brake system will use more than 0.02 cu. in. of fluid from your vehicle's master cylinder. If it does, neither braking system will work well. You could even lose your vehicle brakes. • The trailer brake parts must be able to take 3,000 psi of pressure. If not, the trailer brake system must not be used with your vehicle. If everything checks out thus far, have a qualified individual make the brake fluid tap at the master cylinder port that sends fluid to the rear brakes. Don't use copper tubing, because it will bend and ultimately break. Use only double-walled steel brake tubing.

**Hitches:** It's important to have the correct hitch equipment. Crosswinds, large trucks going by and rough roads are just a few reasons why you'll need the right hitch. Here are some rules to follow:

- If you'll be towing a trailer that, when loaded, will weigh more than 5,000 lbs., be sure to use a frame-mounted, weight-distributing hitch and sway control of the proper size. This equipment is very important for proper vehicle loading and good handling when you're driving.
- If you have to make any holes in the body of your vehicle to install a trailer hitch, be sure to seal the holes if you ever remove the hitch. If they're not sealed, dirt, water and deadly carbon monoxide from the exhaust can get into your vehicle.



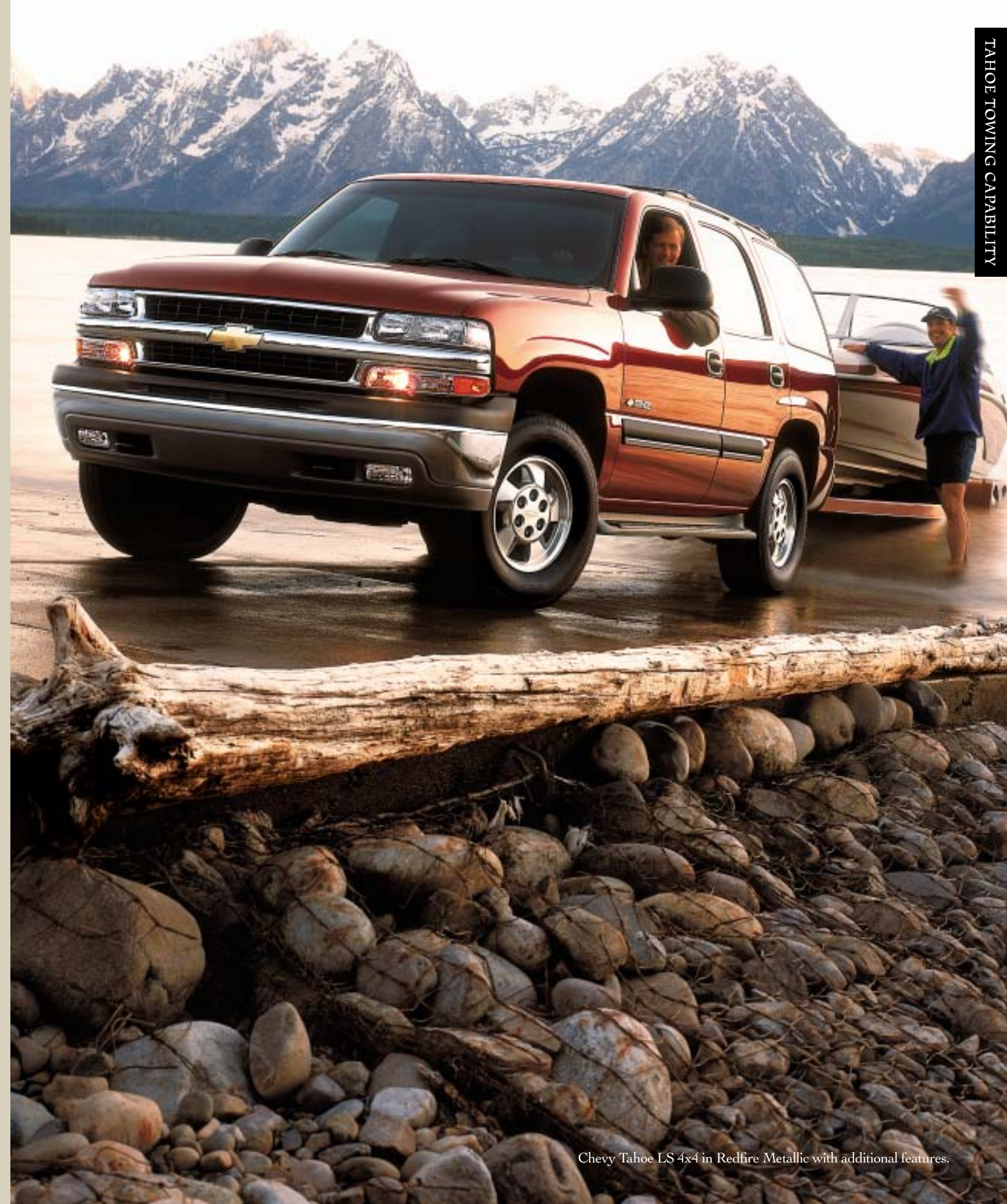
**Tow/Haul Mode** — When engaged, Tow/Haul mode enhances trailering by reprogramming the automatic transmission shift schedule while you're towing heavy loads.

## TAHOE TRAILERING

Weight-carrying hitch limit: 5,000-lb. trailer with 600-lb. tongue weight. Weight-distributing hitch and sway control required over 5,000-lb. trailer weight. The vehicle owner is responsible for obtaining the hitch ball, a hitch of the proper size, type and capacity, and other appropriate equipment required to safely tow both the trailer and the load that will be towed. Ask your Chevrolet dealer for advice about the proper towing equipment for your new vehicle.

MODEL	Vortec 4800 V8 (Automatic)			Vortec 5300 V8 (Automatic)		
	GVWR <sup>1</sup> (lbs.)	Base Payload <sup>2</sup> (lbs.)	Max. Trailer Weight <sup>3</sup> (lbs.)	Required Axle Ratio	Max. Trailer Weight <sup>3</sup> (lbs.)	Required Axle Ratio
Tahoe (2WD)	6500 - 6800	1625	5700 6700	3.42 3.73	6700 7700	3.42 3.73
Tahoe (4x4)	6800 - 6900	1667	6400 7400	3.73 4.10	7400 8100	3.73 4.10

<sup>1</sup> GVWR (Gross Vehicle Weight Rating) includes vehicle, passengers, equipment and cargo. GVWR availability may vary, depending on series, model and equipment selected. <sup>2</sup> Payload includes passengers, equipment and cargo. <sup>3</sup> Maximum trailer weight ratings are calculated assuming a base vehicle, except for an option(s) necessary to achieve the rating, plus driver. The weight of other optional equipment, passengers and cargo will reduce the maximum trailer weight your vehicle can tow. See your Chevy Truck dealer for additional details. NOTES: Trailer tongue weight should be 10 to 15 percent of total loaded trailer weight (up to 1,000 lbs.). Addition of trailer tongue weight cannot cause vehicle weights to exceed Rear Gross Axle Weight Rating (RGAWR) or Gross Vehicle Weight Rating (GVWR). These ratings can be found on the certification label located on the driver door or door frame.





# IT REMINDS YOU THAT INSIDE AND OUT, IT'S ALL CHEVY TRUCK.

## Tahoe Suspensions

Depending on the model, Chevy Tahoe can be equipped with one of these suspensions:

- **Premium Ride** — a rear self-leveling feature helps maintain the rear suspension level with the front during heavy-trailer or fully loaded conditions. Standard on all models.
- **Z71** — is designed for off-road driving and includes gas-charged shock absorbers and spring-assisting jounce bumpers that are tuned to minimize large suspension inputs. Available on LS.
- **Autoride** — automatically varies the amount of shock damping on a real-time basis — under any circumstances — by sensing different road surfaces, speed, steering, load and wheel height conditions. Available on LT.



**Five-Link Rear Suspension** — Tahoe features a five-link rear suspension that includes two upper control arms, two lower control arms and a track bar to control side-to-side movements. This design allows Tahoe to maintain a smooth and quiet ride over a variety of terrain.



**Four-Wheel ABS Disc Brakes** — Tahoe has large rotors and pads for excellent braking capability. And Dynamic Rear Proportioning (DRP) controls rear brake pressure to optimize front-to-rear brake balance.

**Corrosion Protection** — Two-sided galvanized steel is used on all exterior body panels (except the roof) to help protect against corrosion. When the available sunroof is chosen, the roof is constructed of two-sided galvanized steel.

**Frame Technology** — Along with its incredibly strong, modular frame, Tahoe features hydroformed frame rails. Hydroforming the rails reduces stretching of the steel during the manufacturing process, which allows the steel to retain more of its strength.

**Door Seals** — Strategically placed door seals help provide a quiet ride and excellent insulation. They also help prevent wind noise and water intrusion into the Tahoe interior.

**GM Tire Safety** — GM developed an extensive tire testing program known as Tire Performance Criteria (TPC) more than 25 years ago. TPC helps ensure that the tires GM uses are matched to that type of vehicle and have undergone a series of tests at its Tire and Wheel laboratory. GM also routinely meets with tire companies to verify the performance of tires used on all its products. Please visit [gm.com](http://gm.com) for more information.

**Underbody Spare Tire Location** — The spare tire is located underneath the frame to provide a spacious cargo area. The spare tire also includes a lock to help prevent theft.



Find out more benefits of the clean-burning E85 Vortec 5300 V8 SFI engine by visiting [chevy.com/tahoebrochure](http://chevy.com/tahoebrochure)

## A Responsible SUV

As part of the design of Chevy Tahoe, GM engineers looked for ways to help the environment. Here are just a few:

- All 2002 Tahoe models sold in California qualify as Low Emission Vehicles according to the California Air Resources Board.
- An ethanol-compatible E85 flexible fuel version of the Vortec 5300 V8 SFI engine is available for Tahoe in all states except California.
- Most plastic parts in Tahoe are marked for recyclability.
- Old tires are used to manufacture radiator-side air baffles.
- Hydroforming frame components eliminates tons of steel scrap each year.
- The accessory drive belt, which powers the alternator and water pump, is designed to operate for up to 150,000 miles before replacement.\*
- With its Bussed Electrical Centers (BEC), Tahoe has minimal electrical system splices. This results in greater electrical system reliability while reducing the need for lead solder.
- The standard Driver Message Center indicates when it's time to change the engine oil based on operating conditions. This function helps potentially eliminate unnecessary oil changes and corresponding waste.

\*Maintenance needs vary with different uses and driving conditions. See the Owner's Manual for more information.



# IT PLACES SAFETY AND SECURITY AS A TOP PRIORITY.

When weather conditions are less than ideal, it's comforting to know Chevy Tahoe is looking out for your safety and security. That's why Tahoe has been designed and engineered with an integrated safety system of crash avoidance, occupant protection and security features. From standard four-wheel ABS brakes to side-impact air bags,<sup>o</sup> Chevy Tahoe reinforces your driving confidence mile after mile.

<sup>o</sup>A NOTE ON CHILD SAFETY: Always use safety belts and proper child restraints, even with air bags. Children are safer when properly secured in a rear seat. Never place a rear-facing infant restraint in the front seat of any vehicle equipped with an active air bag. See your vehicle Owner's Manual and child safety seat instructions for more safety information.

## Select Tahoe Safety And Security Features:

- Driver and right front-passenger side-impact air bags (see Note above).
- Four-wheel antilock disc brakes with Dynamic Rear Proportioning.
- OnStar\* (standard on LT and Z71, available on LS).
- Autotrac 4x4 system (standard on 4x4 models only).
- Child security rear-door locks.
- PASSlock® II theft-deterrent system, content theft alarm and Remote Keyless Entry.
- Engine coolant protection mode.

<sup>o</sup>One-year OnStar Safety and Security service contract is standard on Tahoe LT and Z71. Call 1-800-ONSTAR-7 for system limitations and details.

To learn more about Tahoe safety and security features, visit [chevy.com/tahoebrochure](http://chevy.com/tahoebrochure)

Chevy Tahoe LS 4x4 in Light Pewter Metallic.



## A PERSONAL INVITATION TO MAKE IT DISTINCTLY YOURS.

Add a personal touch to your Tahoe by selecting from a number of Chevy dealer-installed GM Accessories. They're backed by the GM New Vehicle Limited Warranty<sup>o</sup> and can help enhance the comfort, convenience and great looks of Tahoe. GM Accessories. They help make your new Tahoe as individual as you are.

<sup>o</sup>3 years/36,000 miles (whichever comes first). See your Chevy dealer for details.

To see more ways to accessorize your Tahoe, visit [chevy.com/tahoebrochure](http://chevy.com/tahoebrochure)

### Available GM Accessories For Chevy Tahoe:

- Brush/grille guard.
- Roof-mounted bicycle carrier (carries one bicycle).
- Hitch-mounted ski carrier (secures up to six pairs of skis or four snowboards to the back of Tahoe).
- Roof-mounted ski carrier (holds up to six pairs of skis or four snowboards).
- Canoe/load-stop carrier (attaches to the available GM Accessories roof rack utility bars to let you securely transport ladders, canoes or kayaks).
- Splash guards.
- Reversible rear cargo-area floor mat.
- Molded hood protector.
- Front end cover.
- Security systems.



**Cargo Organizer** — This available cargo organizer makes storing loose items more convenient. It features an adjustable dual-divider system for securing a variety of items, from groceries to sporting equipment.



**Hot/Cold Beverage Holder** — Enjoy your favorite hot and cold beverages at the appropriate temperature with this innovative, available GM Accessory. A multiple-position switch lets you use one of the integrated dual cup holders for a cold drink, while the other can be used simultaneously to keep a cup of coffee warm.

NOTE: All GM Accessories are optional. See page 33 for GM Accessories Warranty Information.



**Bike Carrier** — Whether you're taking a short trip or a long vacation, this bike carrier lets you take your wheels along with you. It attaches easily to the hitch and can hold up to four bikes.



Chevy Tahoe LS 4x4 in Victory Red with front brush guard available from GM Accessories.



# YOU NEVER TRAVEL ALONE.

Chevy Trucks are the most dependable, longest-lasting trucks on the road<sup>o</sup> — sold and serviced by the largest dealer network in the USA. When you buy a Chevy Truck, you also get a rock-solid, comprehensive owner protection plan that will be there for you from the moment you take delivery.

The plan includes:

- New Vehicle Limited Warranty†
- 24-Hour Roadside Assistance
- Courtesy Transportation

It's an owner protection plan you can believe in. Your Chevrolet dealer has all the details.

<sup>o</sup>Dependability based on longevity: 1981–July 2000 full-line light-duty truck company registrations. Excludes other GM divisions. †3 years/36,000 miles (whichever comes first). See your Chevrolet dealer for details.

## 24-Hour Roadside Assistance

Call 1-800-CHEV-USA toll free anytime during the warranty period. Towing and basic technical advice come with the Basic Care package. Courtesy Care provides additional features<sup>o</sup> including locksmith services, flat tire changing, fuel delivery, non-warranty towing and jump starts. Some services will incur costs. Chevrolet reserves the right to modify or discontinue Basic Care and Courtesy Care at any time.

<sup>o</sup>During the term of the New Vehicle Limited Warranty.

## New Vehicle Limited Warranty

This warranty is for GM vehicles registered in the USA. See your Chevrolet dealer for terms and conditions. Covered for 3 years/36,000 miles (whichever comes first):

- The complete vehicle
- Tires
- Towing to your nearest Chevrolet dealership
- Cosmetic corrosion resulting from defects
- Repairs made to correct any vehicle defects
- No charge for most warranty repairs

Covered for 6 years/100,000 miles (whichever comes first):

- Rust-through corrosion

## From Day One ...

The vehicle is checklist-ready for you to drive away, and a full orientation awaits you on everything about your new Chevy.

## Courtesy Transportation

Ask your participating Chevrolet dealer for Courtesy Transportation if you drop your vehicle off for repairs under the New Vehicle Limited Warranty. Also see if you qualify for expense reimbursement and/or vehicle rental. Services vary at election of participating dealer.

## Chevrolet Customer Assistance Center

Call 1-800-222-1020 toll free to talk directly to specialists who can handle any product or service concern you may have.

For more information on 2002 Chevrolet car or truck products, call 1-800-950-2438 or visit us at [chevy.com](http://chevy.com)



With the push of a button, available OnStar<sup>o</sup> service connects you with trained OnStar Advisors. They offer valuable assistance for just about any situation 24 hours a day, seven days a week, providing safety, security and convenience wherever you drive. For more information, call 1-800-ONSTAR-7 (1-800-667-8277) or visit us at [onstar.com](http://onstar.com)

<sup>o</sup>Service will vary depending on truck brand purchased and service plan. OnStar uses existing emergency service providers, as well as wireless and cellular satellite technologies.

## Additional Information

Important: A Word About This Brochure  
We have tried to make this brochure comprehensive and factual. We reserve the right, however, to make changes at any time, without notice, in prices, colors, materials, equipment specifications, models and availability. Since information may have been updated since the time of printing, please check with your Chevrolet dealer for complete details. Chevrolet reserves the right to lengthen or shorten the model year for any product for any reason, or to start and end model years at different times.

## SmartLease By GMAC

For information about SmartLease, SmartBuy or any of the other quality GMAC financing options, see your Chevy dealer, call 1-800-32-SMART or visit our web site at [www.gmacfs.com](http://www.gmacfs.com).

## The GM Mobility Program

Chevrolet recognizes the importance of mobility to everyone's life and, therefore, offers financial assistance to persons with disabilities through the General Motors Mobility Program. This program can provide up to \$1,000 reimbursement toward the cost of eligible aftermarket adaptive equipment for drivers or passengers when installed or reinstalled on any eligible purchased or leased new GM vehicle. For details and free resource information, call 1-800-323-9935 (TTY users: 1-800-833-9935).

## Updated Service Information

Chevrolet dealers receive useful service bulletins about Chevrolet products. You can purchase them by calling 1-800-551-4123.

## Assembly

Chevros and their components are assembled or produced by different operating units of General Motors, its subsidiaries or suppliers to GM worldwide. We sometimes find it necessary to produce Chevros with different or differently sourced components than originally scheduled. Since some options may be unavailable when your vehicle is assembled, we suggest that you verify that your vehicle includes the equipment you ordered or, if there are changes, that they are acceptable to you.

## Engines

Chevros are equipped with engines produced by different operating units of GM, its subsidiaries or suppliers to GM worldwide.

## Rust-Through Corrosion Protection

Chevros are designed and built to resist corrosion. All body sheet-metal panels are warranted against rust-through for 6 years/100,000 miles (whichever comes first). Application of additional rust-inhibiting materials is not required and none is recommended. See your Chevrolet dealer for terms of this limited warranty.

## GM Accessories Warranty Information

All GM Official Licensed Products purchased from and/or installed by your GM dealer are covered under the individual accessory manufacturers' warranties, and they are not warranted by General Motors or its dealers. Should any such GM Licensed Product require service, please contact the GM Licensed Product manufacturer identified on the product or its accompanying documentation. If the manufacturer is not so identified, contact your GM dealer to obtain the necessary information.

## GM Protection Plan<sup>o</sup>

The GM Protection Plan offers mechanical repair protection in addition to that provided by GM's New Vehicle Limited Warranty. Coverage for vehicle maintenance is also available. Ask your dealer about the GM Protection Plan. Coverage available only in the U.S. and Canada.



**Accelerate Your College Savings**  
GM — along with many other leading companies — has teamed up with Upromise, the revolutionary college savings accelerator that can help you save thousands of dollars for college. When you purchase or lease an eligible new Chevrolet, GM will contribute \$150 into your Upromise college savings account. For complete details on the GM-Upromise program, go to <http://upromise.gm.com>. Enrollment is simple and absolutely free. To receive the \$150 GM contribution, you need to be a Upromise member 30 days before you take delivery of your vehicle.

GM, the GM Emblem, Chevrolet, the Chevrolet Emblem, Astro, Blazer, Chevy Express, S-10, Silverado, Suburban, Tahoe, Tracker, TrailBlazer, Z71, Autotrac, PASSlock, Solar-Ray and 1-800-CHEV-USA are registered trademarks and Chevy, Autoride, Avalanche and Vortec are trademarks of the GM Corp. GMAC, SmartLease and SmartBuy are registered service marks of the General Motors Acceptance Corporation. HomeLink is a registered trademark of Johnson Controls, Inc. OnStar is a registered service mark of OnStar Corporation. ©2001 General Motors Corporation. All rights reserved.

General Motors is a proud sponsor of the 2002 Olympic Winter Games. Learn more at [chevy.com/tahoebrochure](http://chevy.com/tahoebrochure)



Litho in USA.

September 2001



# INTERIOR COLORS AND SEATING CHOICES

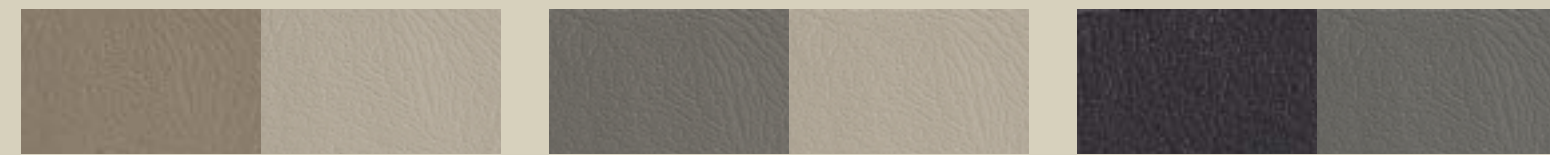
## LT COLOR AVAILABILITY

Exterior Colors	Interior Colors		
	GRAPHITE/ MED. GRAY	TAN/ NEUTRAL	MED. GRAY/ NEUTRAL
Onyx Black	■	■	■
Indigo Blue Metallic	■	■	■
Light Pewter Metallic	■	■	■
Forest Green Metallic	■	■	■
Medium Charcoal Gray Metallic	■	■	■
Victory Red	■	■	■
Redfire Metallic	■	■	■
Summit White	■	■	■

To interact with Tahoe color selections, visit the color selector at [chevy.com/tahoebrochure](http://chevy.com/tahoebrochure)



Standard Tahoe LT Custom Leather seating surfaces (first and second rows) shown in Neutral.



Tan interior with Neutral leather seating surfaces and accents.

Medium Gray interior with Neutral leather seating surfaces and accents.

Graphite interior with Medium Gray leather seating surfaces and accents.

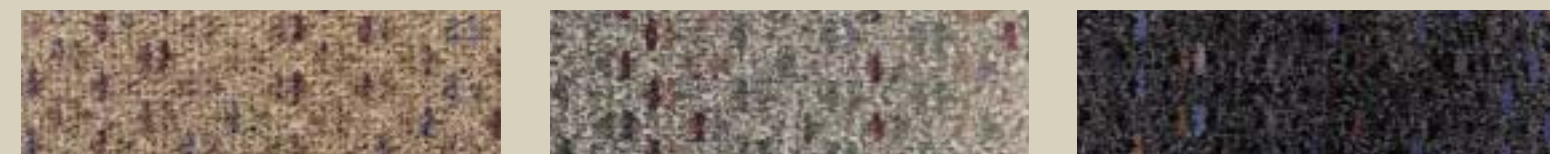
## LS COLOR AVAILABILITY<sup>1</sup>

Exterior Colors	Interior Colors		
	GRAPHITE/ MED. GRAY	TAN/ NEUTRAL	MED. GRAY/ NEUTRAL
Onyx Black	■	■	■
Indigo Blue Metallic	■	■	■
Light Pewter Metallic	■	■	■
Forest Green Metallic	■	■	■
Medium Charcoal Gray Metallic	■	■	■
Victory Red	■	■	■
Redfire Metallic	■	■	■
Summit White	■	■	■

<sup>1</sup> Tahoe Z71 only available in Onyx Black, Light Pewter Metallic, Forest Green Metallic and Summit White.



Standard Tahoe LS Custom Cloth seating shown in Tan. Also available with Custom Leather seating surfaces for first and second rows (standard with Z71).



Tan Custom Cloth with Neutral accents.

Medium Gray Custom Cloth with Neutral accents.

Graphite Custom Cloth with Medium Gray accents.

# INTERIOR FEATURES

TRIM LEVEL	LS Z71 LT		
------------	-----------	--	--

## SEATING

<b>Front-row seats:</b>			
– Driver and front-passenger six-way power Custom Cloth reclining 40/20/40 split-bench seat with manual driver and passenger lumbar support and center armrest storage	S	–	–
– Driver and front-passenger six-way power reclining bucket seats with manual lumbar support, inboard armrests and floor console:	O	S	–
– Custom Cloth	O	–	–
– Custom Leather seating surfaces	O	S	–
– Heated bucket seats with Custom Leather seating surfaces, eight-way power, driver memory, driver and passenger power recline, lumbar support, seatback bolster and articulated head restraints	–	–	S

<b>Second-row seats:</b> 60/40 split-folding bench	S	S	S
--	---	---	---

<b>Third-Row Seat Package:</b> includes 50/50 third-row seat and liftgate with wiper/washer. Third-row seat is vinyl when Custom Leather seating is selected.	O <sup>1</sup>	–	O <sup>1</sup>
---	----------------	---	----------------

## INTERIOR FEATURES

<b>Air bags:</b> driver and right front-passenger front- and side-impact <sup>2</sup>	S	S	S
---	---	---	---

<b>Air conditioning and heat:</b>			
– front and rear	S	S	S
– electronic climate control	–	–	S <sup>3</sup>

<b>Assist handles:</b> front-passenger and second-row outboard	S	S	S
--	---	---	---

<b>Cargo shade:</b> color-keyed, retractable and removable	S <sup>4</sup>	S	S <sup>4</sup>
--	----------------	---	----------------

<b>Cargo net:</b> rear	S	S	S
------------------------	---	---	---

<b>Console:</b> overhead	S	S	S
--------------------------	---	---	---

<b>Cruise control:</b> with telltale in instrument panel cluster	S	S	S
--	---	---	---

<b>Cup holders:</b> dual front	S	S	S
--------------------------------	---	---	---

<b>Door locks:</b>			
– Programmable power	S	S	S
– Remote Keyless Entry and content theft alarm	S	S	S

<b>Driver Message Center</b>	S	S	S
------------------------------	---	---	---

<b>Floor Mats:</b> carpeted for all rows	S	S	S
--	---	---	---

<b>Glass:</b> Solar-Ray deep-tinted	S	S	S
-------------------------------------	---	---	---

<b>HomeLink</b> universal transmitter	S	S	S
---------------------------------------	---	---	---

<b>Instrument panel gauges:</b> trip odometer, oil pressure, voltmeter, tachometer, coolant temperature and engine hour meter	S	S	S
---	---	---	---

TRIM LEVEL	LS Z71 LT		
------------	-----------	--	--

## INTERIOR FEATURES (cont.)

<b>Lighting, interior:</b>			
– Dome with delayed entry feature, ashtray, underhood and glove box	S	S	S
– Door handle-activated illuminated entry with ground illumination	S	S	S

<b>Mirror:</b> inside rearview self-dimming with eight-point compass and outside temperature readout dual display	S	S	S
---	---	---	---

<b>PASSlock® II theft-deterrent system</b>	S	S	S
--	---	---	---

<b>OnStar system<sup>3</sup>:</b> one-year Safety and Service plan includes air bag notification, emergency and roadside services, theft tracking, remote diagnostics, remote door unlock and AccidentAssist	O	S	S
--	---	---	---

<b>Power ports:</b> dual front, single cargo area	S	S	S
---	---	---	---

<b>Safety belts:</b> outboard lap and shoulder; inboard lap only; all safety belts-to-seat in first and third rows.	S	S	S
---	---	---	---

<b>Steering column:</b> Tilt-Wheel adjustable	S	S	S
---	---	---	---

<b>Steering wheel:</b> leather-wrapped	S	S	S
--	---	---	---

<b>Sunshades:</b> cloth-covered with extender/secondary shades and lighted vanity mirrors	S	S	S
---	---	---	---

<b>Tires:</b> 17-inch	–	S	–
-----------------------	---	---	---

<b>Windows:</b> power, with driver lockout switch	S	S	S
---	---	---	---

## SOUND SYSTEMS

<b>Audio systems:</b>			
– Nine speakers including rear subwoofer	S	S	S
– AM/FM stereo with CD player	S	–	–
– AM/FM stereo with dual playback cassette and CD players and rear-seat audio controls	O <sup>6</sup>	S	S

S – Standard. O – Optional.

<sup>1</sup> When this option is ordered, the cargo shade and cargo floor mat are not included. <sup>2</sup> Always use safety belts and proper child restraints, even with air bags. Children are safer when properly secured in a rear seat. See the Owner's Manual for more safety information. <sup>3</sup> When sunroof is ordered, rear electronic climate control is not available. <sup>4</sup> Not available when Third-Row Seat Package is ordered. <sup>5</sup> One-year OnStar Safety and Security service contract is standard on Tahoe LT and Z71, available on Tahoe LS. Call 1-800-ONSTAR-7 for system limitations and details. <sup>6</sup> Requires optional equipment group.

**The GM Card® – What Are You Charging Toward?<sup>SM</sup>**  
The GM Card rewards you 5% on every credit card purchase, making it the fastest way to save toward the GM car or truck of your dreams. For information or to apply for the GM Card, call 1-800-8GM-CARD or visit our web site at [www.gmcard.com](http://www.gmcard.com)

# EXTERIOR FEATURES

TRIM LEVEL	LS Z71 LT		
------------	-----------	--	--

## EXTERIOR FEATURES

<b>Air dam:</b> Dark Argent	S	–	S
-----------------------------	---	---	---

<b>Air dam:</b> gray, bold style	–	S	–
----------------------------------	---	---	---

<b>Assist steps:</b>			
– Side-mounted	S	–	S
– Side-mounted, tubular	–	S	–

<b>Body panels:</b> two-sided galvanized steel (except roof panel without sunroof)	S	S	S
--	---	---	---

<b>Bumpers:</b>			
– Front, chrome with top pad	S	–	S
– Front, painted	–	S	–
– Rear, chrome with step pad	S	–	S
– Rear, painted	–	S	–

<b>Daytime Running Lamps with Automatic Exterior Lamp Control</b>	S	S	S
---	---	---	---

<b>Defogger:</b> rear-window, electric	S	S	S
--	---	---	---

<b>Doors, rear:</b>			
– Cargo	S <sup>1</sup>	S	S <sup>1</sup>
– Liftgate, with wiper/washer	O	O	O

<b>Foglamps, halogen:</b>			
– Rectangular	S	–	S
– Rounded	–	S	–

<b>Grille:</b>			
– Chrome deluxe	S	–	S
– Body-color	–	S	–

<b>Luggage rack:</b> adjustable, roof-mounted	S	–	S
---	---	---	---

<b>Luggage rack:</b> with rear roller	–	S	–
---------------------------------------	---	---	---

<b>Mirrors, outside rearview foldaway:</b>			
– Electric, heated with ground illumination and driver-side self-dimming feature	S	S	S

<b>Moldings:</b> body-side with chrome accent	S	–	S
---	---	---	---

<b>Moldings:</b> lower rocker (gray)	–	S	–
--------------------------------------	---	---	---

<b>Recovery hooks:</b> two front (4x4 models)	O <sup>2</sup>	S	O <sup>2</sup>
---	----------------	---	----------------

<b>Sunroof:</b> power	O <sup>3</sup>	O	O <sup>3</sup>
-----------------------	----------------	---	----------------

<b>Wheel flares</b>	O	–	O
---------------------	---	---	---

<b>Wheel flares with extensions</b>	–	S	–
-------------------------------------	---	---	---

<b>Wipers:</b> intermittent windshield	S	S	S
--	---	---	---

## SUSPENSION CHOICES

<b>Premium Ride</b>	S	–	S
---------------------	---	---	---

<b>Autoride</b>	–	–	O
-----------------	---	---	---

<b>Z71 Off-Road</b>	–	S	–
---------------------	---	---	---

TRIM LEVEL	LS Z71 LT		
------------	-----------	--	--

## CHASSIS FEATURES

<b>Air cleaner:</b> high-capacity	S	S	S
-----------------------------------	---	---	---

<b>Alternator:</b> 130-amp	S	S	S
----------------------------	---	---	---

<b>Battery:</b> heavy-duty 600 cca	S	S	S
------------------------------------	---	---	---

<b>Brakes:</b> four-wheel antilock with front and rear discs	S	S	S
--	---	---	---

<b>Engine:</b>			
– Vortec 4800 V8 SFI	S	–	–
– Vortec 5300 V8 SFI	O	S	S
– Ethanol-capable E85 Vortec 5300 V8 SFI	O <sup>4</sup>	O <sup>4</sup>	O <sup>4</sup>

<b>Engine-block heater</b>	O	O	O
----------------------------	---	---	---

<b>Exhaust system:</b> stainless-steel; aluminized stainless-steel muffler and tailpipe	S	S	S
---	---	---	---

<b>Fuel capacity:</b> (approximate): 26-gallon	S	S	S
--	---	---	---

<b>Locking rear differential:</b> (4x4) <sup>2</sup>	O	S	O
--	---	---	---

<b>Skid Plate Package</b> (4x4 only): includes oil pan/differential case, transfer case shields	O	S	O
<b>Spare tire:</b> underbody, with winch-type carrier and lock	S	S	S

<b>Suspension, front:</b> independent torsion bar	S	S	S
---	---	---	---

<b>Suspension, rear:</b> multilink with coil springs	S	S	S
--	---	---	---

<b>Steering:</b> power-assisted recirculating ball	S	S	S
--	---	---	---

<b>Traction Package</b> (2WD only): includes Electronic Traction Assist, locking rear differential and recovery hooks	O	–	O
---	---	---	---

<b>Trailer Package:</b> includes trailer hitch platform, seven-pin wiring connector, transmission fluid cooler, electric brake controller, jumper harness and 7-way to 4-way adapter	O	S	O
--	---	---	---

<b>Trailer wiring harness:</b> seven-wire	S	S	S
---	---	---	---

<b>Transfer case:</b> Autotrac active (4x4 models)	S	S	S
--	---	---	---

<b>Transmission:</b> four-speed electronically controlled automatic with overdrive and Tow/Haul mode	S	S	S
--	---	---	---

S – Standard. O – Optional.

<sup>1</sup> Not available with Third-Row Seat Package. <sup>2</sup> For 2WD, included with Traction Package only. <sup>3</sup> When this option is ordered, second-row climate controls are not available. <sup>4</sup> E85 Vortec 5300 V8 SFI engine not available in California.

To learn more about Tahoe features and specifications, visit [chevy.com/tahoebrochure](http://chevy.com/tahoebrochure)



# EXTERIOR COLORS AND WHEELS



Onyx Black



Indigo Blue Metallic



Redfire Metallic



Forest Green Metallic



Medium Charcoal Gray Metallic



Victory Red



Light Pewter Metallic



Summit White



LS and LT 16-Inch  
Machined-Face  
Cast-Aluminum



Z71 17-Inch  
Machined-Face  
Cast-Aluminum

To interact with Tahoe color selections, visit the color selector at [chevy.com/tahoebrochure](http://chevy.com/tahoebrochure)



# CHEVY TRUCKS LIKE A ROCK



**Avalanche**



**Silverado**



**Suburban**



**Tahoe**



**TrailBlazer**



**Tracker**



**Blazer**



**S-10 Pickup**



**Astro**



**Express LT**

▶ FOR ADDITIONAL INFORMATION ABOUT CHEVROLET VEHICLES, VISIT [CHEVY.COM](http://CHEVY.COM)

AMERICA ONLINE KEYWORD: CHEVY

