

Move up. Without  
settling down.

# 2014 ACURA ILX



Luxury

Drivetrain

Technology

Exterior

Interior

Specifications



# WELCOME TO LUXURY.

---







Luxury

Drivetrain

Technology

Exterior

Interior

Specifications



---

IT STARTS WITH THE IDEA THAT  
LIFE'S REWARDS SHOULD  
COME AVAILABLE WHEN  
YOU'VE STILL GOT A LOT OF  
LIFE LEFT IN YOU.

THE ILX IS FOR THOSE WHO  
WANT TO MOVE UP,  
WITHOUT SETTLING DOWN.

---



*Acura recently  
received the  
2013 ALG Residual  
Value Award for  
Premium Brands.*

Luxury

Drivetrain

Technology

Exterior

Interior

Specifications

**RATHER THAN LUXURY THAT EXCLUDES, THIS IS LUXURY THAT INVITES.**





# SUCCESS BRINGS WITH IT MANY THINGS. SHOULDN'T FUN BE ONE OF THEM?

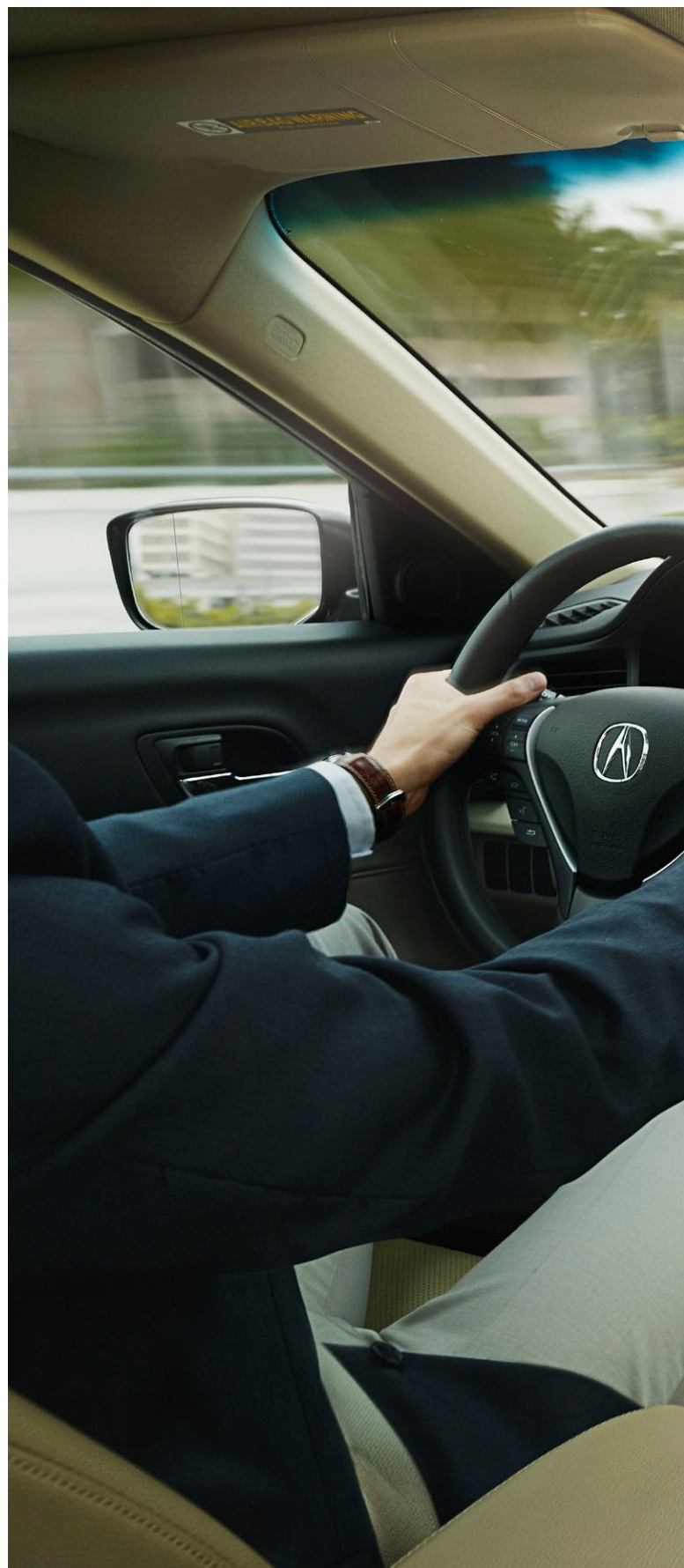
*With three powertrain options, the ILX gives you ample opportunity to inject a little more fun into your day.*

*This is anything but basic transportation. And it starts the moment you start the engine. The 2.0-liter 4-cylinder engine in the ILX features Acura's i-VTEC® variable valve technology to help wring the most enjoyment from its 150 horses, all while helping deliver a 35-mpg highway fuel economy rating.<sup>1</sup>*

*The 201-horsepower engine in the ILX 6MT promises even more thrills. Its all-aluminum construction enhances the vehicle's weight balance for better handling and agility.*

*The ILX Hybrid mates an efficient 1.5-liter engine with a powerful electric motor to generate plenty of acceleration and help achieve mpg ratings of 39 in the city and 38 on the highway.<sup>1</sup>*

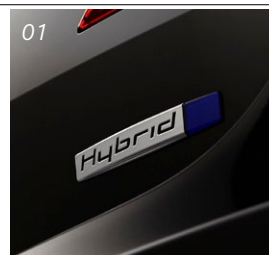
*2014 ILX Hybrid available Fall 2013.*





01 **The lithium-ion battery**  
in the ILX Hybrid generates  
high output without  
adding excessive weight  
to the vehicle.

02 **i-VTEC engine**  
**technology**  
maximizes both  
low-end torque and  
high-end horsepower.



ILX with Technology Package shown.

Luxury

Drivetrain

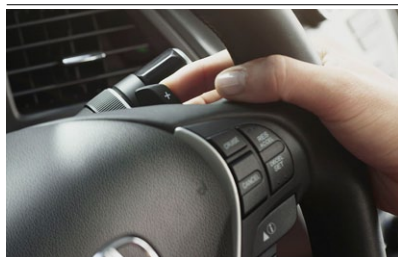
Technology

Exterior

Interior

Specifications





**Paddle shifters** *combine the convenience of automatic shifting with shift-for-yourself enjoyment.*







# WITHOUT A MEANS TO HARNESS IT, POWER IS ONLY POTENTIAL.

*Each ILX model features a transmission perfectly suited to make the most of engine output.*

*The ILX converts horsepower into forward movement with a 5-speed automatic transmission. Those desiring more involvement can take advantage of the Sequential Sport-Shift paddle shifters to manage the transmission's shift points.*

*The ILX 6MT features a close-ratio 6-speed manual to let you get the most power out of the vehicle's high-revving engine.*

*The ILX Hybrid features a Continuously Variable Transmission (CVT), giving the vehicle a steady climb in acceleration from a standing start up to cruising speed, helping to enhance its fuel efficiency.*



# HYBRID TECHNOLOGY THAT CAN EVEN MAKE YOU MORE EFFICIENT.





*The ILX Hybrid is designed to produce great fuel economy efficiently. And with a little help from you, it's even better.*

Advanced technology is only part of getting good mpg numbers. The other side of the equation is the person in the driver's seat. The ILX Hybrid features a Fuel Economy Indicator to give you real-time feedback on your

driving style to help you drive more efficiently. You can also push the dash-mounted ECON button and the engine and transmission will both operate more efficiently to help you further maximize your fuel economy.<sup>1</sup>



ILX Hybrid shown.



# THE LIST OF LUXURY VEHICLE ESSENTIALS IS DUE FOR A REVISION.

*The ILX not only keeps pace with  
state-of-the-art luxury, it ups the ante.*

*While its interior amenities make the  
ILX an ideal respite from the rest of your  
world, it can also help you reach out when  
you're ready to reconnect.*

*In addition to the standard Bluetooth  
HandsFreeLink® phone connectivity,<sup>2</sup> the  
ILX also comes with a new SMS text mes-  
sage function,<sup>3</sup> which can read incoming  
texts aloud and let you verbally choose  
from a list of preprogrammed responses.\**

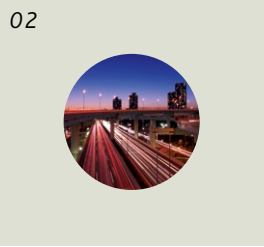
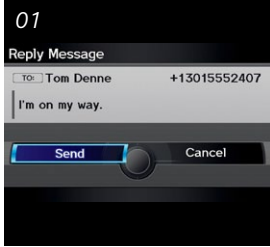


\*Drive responsibly. Some state laws prohibit the operation of



**01 SMS text message function<sup>3</sup>**  
*displays and reads aloud  
incoming text messages and  
lets you respond, hands-free,  
by verbally choosing from a  
list of six options.\**

**02 AcuraLink Real-Time Traffic™<sup>4</sup>**  
*quickly communicates  
driving conditions. Traffic  
Rerouting™<sup>4</sup> can suggest an  
alternative route.\**



Luxury

Drivetrain

Technology

Exterior

Interior

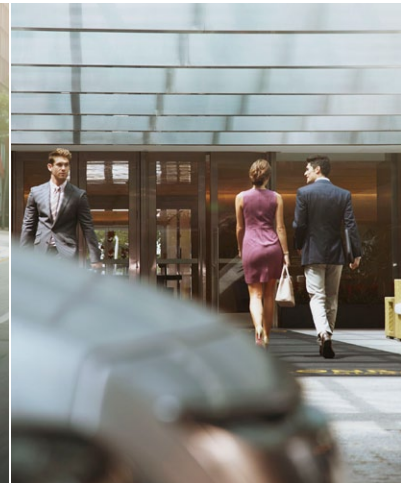
Specifications

<sup>3</sup> handheld electronic devices while operating a vehicle. For safety reasons, always perform any operation on your phone only when the vehicle is safely parked.



THE ILX WAS DESIGNED  
FOR THOSE WHO THINK  
LIFE SHOULD CONSIST  
OF EQUAL PARTS  
RESPONSIBILITY AND FUN.

---





**ITS CLEAN LINES, CRISP PERFORMANCE AND CUTTING-EDGE TECHNOLOGIES HELP THE ILX MEET THE DEMANDS OF YOUR DAY. AND YOUR EVENING.**





# NEVER UNDER- ESTIMATE THE IMPORTANCE OF LOOKING THE PART.

*While the machined creases of the sheet metal are as crisp as a well-tailored business suit, other design features speak to the sportier side of the ILX.*

*Lines that taper toward the rear of the vehicle create wide rear wheel overhangs, giving the ILX an aggressive stance. Details like projector-beam halogen (or available xenon high-intensity discharge) headlights add to the vehicle's modern appearance.*





**Textures and finishes**  
*utilized in the headlight*  
*design add to the vehicle's*  
*uniqueness and visual appeal.*



Luxury

Drivetrain

Technology

Exterior

Interior

Specifications



# YOUR VERY OWN TAKE-IT-WITH-YOU MICROCLIMATE.





*Outside, climates fluctuate with the weather.  
Inside, they conform to your desires.*

*The dual-zone climate-control system features a patented humidity control for ideal comfort. A GPS-linked, solar-sensing climate-control system is also available. It tracks the sun's relative position and intensity and automatically adjusts to compensate.*

*Available Active Sound Control helps keep excess engine noise in check. It can detect unwanted engine noise and emit opposing frequencies to literally cancel it out. Along with extensive soundproofing, it contributes to the sanctuary-like feel of the ILX cabin.*



ILX with Technology Package shown.



# LUXURY THAT BEGINS WITH MATERIAL COMFORT.

*Inside the cabin of the ILX, special attention has been given to areas of contact.*

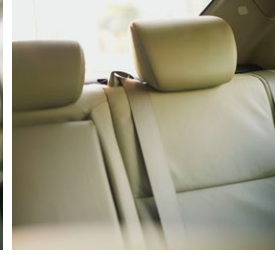
*Go ahead, get comfortable. It's all there for you. Every touch point crafted to enhance the experience. Available features include a leather-trimmed interior, heated front seats and power adjustments for the driver's seat.*

*The steering wheel, shift knob and hand brake are also wrapped in leather, further adding to the cabin's luxurious feel.*





**Premium materials and quality construction give the elements of the cabin a solid, substantial feel.**



Luxury

Drivetrain

Technology

Exterior

Interior

Specifications



415-watt  
audio system.

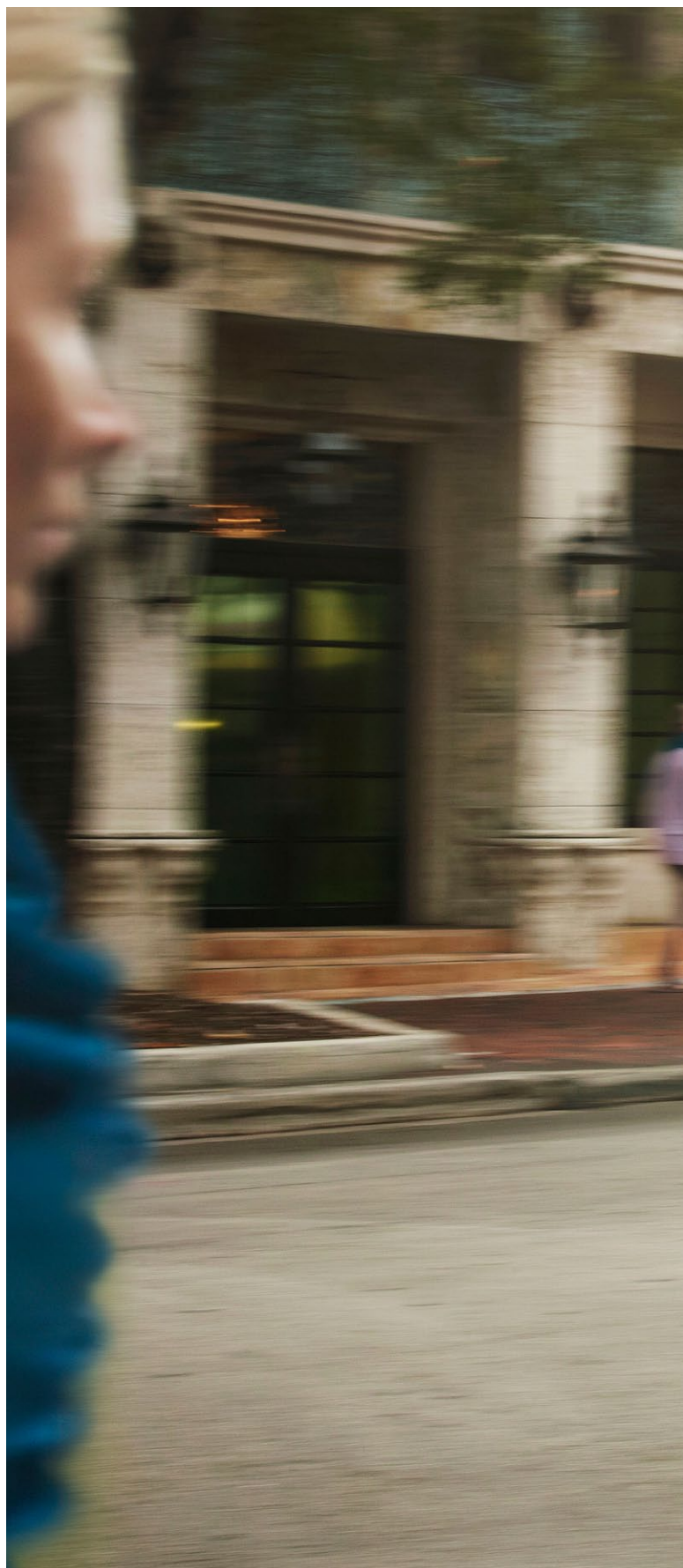
2014 ACURA ILX

# FOR AUDIO- PHILES, THIS IS TRULY AN AGE OF OPTIONS.

*The ILX is on the cutting edge with features like Pandora® compatibility,<sup>5</sup> USB audio interface<sup>6</sup> and available XM® Radio.<sup>7</sup>*

*A great drive deserves a great soundtrack. The vehicle's 415-watt Acura/ELS Surround® Premium Audio System, available with the Technology Package, lets you store more than 3,500 songs on the vehicle's hard disk drive (HDD).*

*The ELS system also features Song By Voice® technology that lets you verbally call up your music based on song, artist or album.*



\*Drive responsibly. Some state laws prohibit the operation of handheld electronic devices wh



**01 USB audio interface<sup>6</sup>** gives you direct control of your iPod® or other compatible music device. Song information appears right on the vehicle's center console.

**02 Pandora internet radio interface<sup>5</sup>** connects with your iPhone®, giving you access to an immense library of musical styles.\*

01



02



ile operating a vehicle. For safety reasons, always launch your audio application or perform any other operation on your phone or audio device only when the vehicle is safely parked.

Luxury

Drivetrain

Technology

Exterior

Interior

Specifications



# SPORTIER DESIGN. THE PERFECT ACCOMPANIMENT TO SPORTIER PERFORMANCE.

---





*Exclusive features and technologies both under the hood and inside the cabin help strengthen the connection between car and driver.*

*Designed to complement its larger engine and 6-speed manual transmission, the cabin of the ILX 6MT has been outfitted to appeal to the driving enthusiast. The seats, steering wheel and door panels feature special stitching.*

*The pedals are drilled aluminum. Gauges glow red. It's all meant to evoke the more spirited nature of this model. A quality that the quick acceleration and specially tuned exhaust note are also quite adept at keeping top of mind.*





---

FUN'S GROWN UP A BIT.

THE THREE DIFFERENT ILX  
MODELS GIVE YOU PLENTY OF  
OPTIONS TO CHOOSE FROM.

WHAT THEY ALL SHARE IS  
THE IDEA THAT FUN, LUXURY  
AND EFFICIENCY CAN ALL  
COMFORTABLY COEXIST.



Luxury

Drivetrain

Technology

Exterior

Interior

Specifications





*ILX lineup.*

ILX 6MT WITH PREMIUM PACKAGE

**ILX 6MT**  
with Premium Package



**ILX 5AT**  
with Technology Package







Luxury

Drivetrain

Technology

Exterior

Interior

Specifications



---

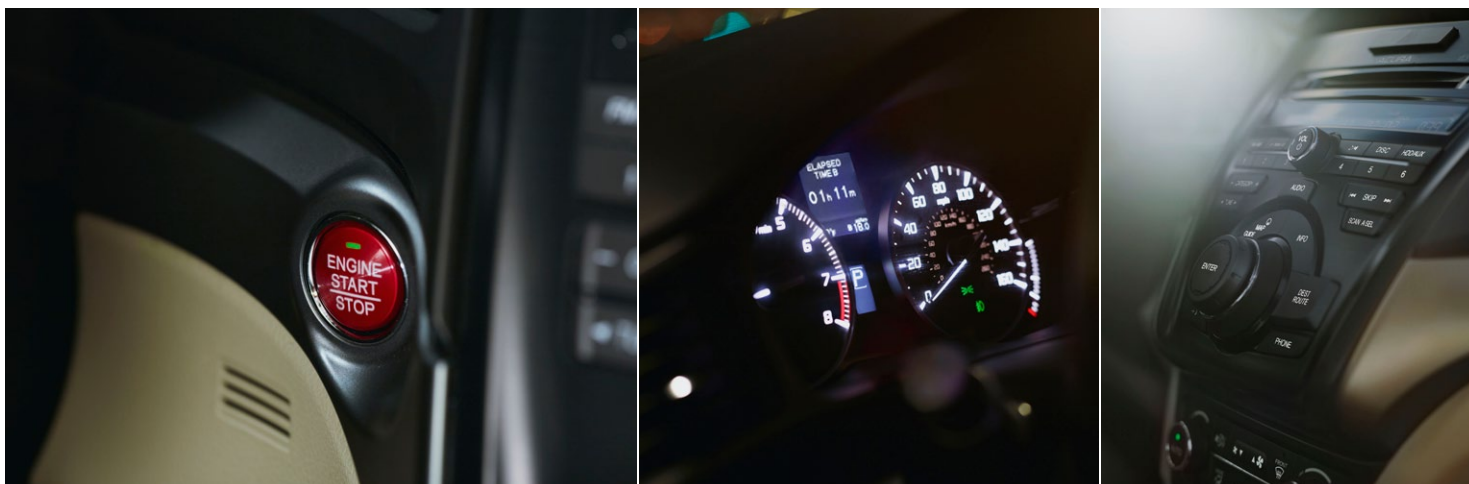
THE ILX DISTINGUISHES  
ITSELF NOT ONLY WITH  
ITS LIST OF FEATURES,  
BUT ALSO IN THE CARE  
THAT GOES INTO EVEN THE  
SMALLEST CONSIDERATIONS.

HOW A BUTTON FEELS  
WHEN PUSHED.

HOW VITAL INFORMATION  
IS COMMUNICATED TO THE  
DRIVER. LUXURY TRULY IS  
IN THE DETAILS.



01 PUSHBUTTON IGNITION / 02 INTELLIGENT DISPLAYS / 03 INTUITIVE CONTROLS /  
04 ONE-TOUCH POWER MOONROOF / 05 AVAILABLE TAILORED LEATHER SEATS





# IT CAN EVEN HELP YOU FIND A WORTHY DESTINATION.

*The available voice-activated Acura Navigation System features a database containing over 7,000,000 points of interest as well as Zagat Survey® restaurant reviews.*

*While part of the job of a luxury vehicle is to produce an enjoyable ride, its primary function is to get you where you're going. Once you've found your fun you can even call ahead for a reservation through a connected Bluetooth-enabled cell phone.<sup>2</sup>*





01 **AcuraLink Real-Time Weather™<sup>4</sup>** gives you current information, including precipitation amounts, forecasts and severe conditions for virtually any U.S. city.\*

02 **Zagat Survey®** restaurant reviews provide dining recommendations based on the type of cuisine you'd like or the part of town you're driving through:

01



02

**ZAGAT**



\*Available only with Technology Package.

Luxury

Drivetrain

Technology

Exterior

Interior

Specifications



ACCOMMODATING.  
EVEN BEFORE YOU CLIMB IN.

---





*Upon your approach, the Keyless Access System will recognize you and let you unlock the door with the touch of the handle.*

*The system is also linked to your personalized settings, memorizing your door lock and lighting preferences. The remote control also lets you open windows and the vehicle's moonroof at the touch of a button before you enter.*

*The Expanded View Driver's Mirror gives you a better look at vehicles passing or being passed, while the multi-view rear camera helps you know what's behind when backing up.*





# A LUXURY VEHICLE SHOULD BE JUDGED ON AGILITY AS MUCH AS ON A SMOOTH RIDE.

*The suspension system aboard the ILX easily handles both of these requirements.*

*It is a balancing act in more ways than one. While the vehicle's suspension system provides a flat ride through the curves, it also strikes the perfect equilibrium between sport and comfort.*

*The ILX features a 4-wheel independent setup that includes Amplitude Reactive Dampers specially designed to help eliminate the small vibrations caused by rough roads.*

*The electric power-assisted rack-and-pinion steering adjusts to vehicle speed, allowing the steering feel to match driving conditions, giving the driver more tactile responses.*





## Chassis stiffness



Luxury

Drivetrain

Technology

Exterior

Interior

Specifications



# WHY EVERY VEHICLE WE BUILD FEELS LIKE AN ACURA.

*Some of the features that make the ILX so much fun to drive also help contribute to passenger safety.*

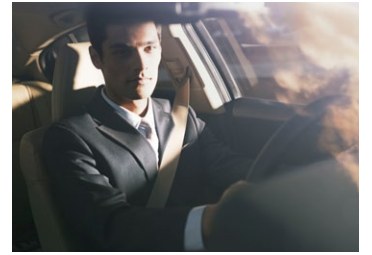
*The vehicle's stiff chassis provides a firm foundation for nimble handling. It also features Acura's Advanced Compatibility Engineering™ (ACE™) body structure, which uses a connected network of structural elements to help protect those inside by distributing frontal crash energy more evenly.*

*Vehicle Stability Assist™ (VSA®) can sense potential understeer or oversteer and brake individual wheels and/or adjust engine speed to help keep you on your intended path. The system also features motion-adaptive steering, which can prompt the driver to steer in the correct direction if it senses instability.*





**Advanced airbags** utilize sensors to deploy at the right time with the appropriate force to better help protect passengers.



Luxury

Drivetrain

Technology

Exterior

Interior

Specifications



## Performance

- 150-hp, 2.0-liter, 16-valve, SOHC i-VTEC® 4-cylinder engine (ILX)
- 201-hp, 2.4-liter, 16-valve, DOHC i-VTEC® 4-cylinder engine (ILX 6MT)
- 111-hp produced with 1.5-liter, 8-valve, SOHC i-VTEC 4-cylinder engine and Integrated Motor Assist (ILX Hybrid)
- 5-speed automatic transmission with Sequential SportShift paddle shifters (ILX)
- Close-ratio 6-speed manual transmission (ILX 6MT)
- Continuously Variable Transmission (CVT) with Sequential SportShift paddle shifters (ILX Hybrid)
- Front-wheel drive
- 4-wheel independent suspension: MacPherson strut front/multi-link rear
- Electric Power-Assisted Rack-and-Pinion Steering (EPS)
- 16-inch aluminum-alloy wheels with P205/55 R16 89H all-season tires (ILX Hybrid)
- 17-inch aluminum-alloy wheels with P215/45 R17 87V high-performance all-season tires

## Safety

- Advanced Compatibility Engineering™ (ACE™) body structure
- Vehicle Stability Assist™ (VSA®) with traction control and motion adaptive steering
- 4-wheel anti-lock braking system (ABS) with Electronic Brake Distribution (EBD) and Brake Assist
- Dual-stage, multiple-threshold front airbags (SRS), front side airbags and side curtain airbags

## ILX Standard Features

- Dual-zone automatic climate control system with humidity control and air filtration
- Perforated leather-trimmed seats\*
- Keyless Access System with smart entry, pushbutton ignition and Acura personalized settings
- Bluetooth® HandsFreeLink® wireless telephone interface<sup>2</sup>
- SMS text message function<sup>3</sup>
- 5-inch color information display
- Multi-view rear camera
- Cruise control
- Tilt and telescopic steering column
- Driver's 8-way power seat\*
- Heated front seats\*
- Fold-down rear seatback (except ILX Hybrid)
- Rear-seat center armrest with beverage holders
- Expanded view driver's mirror
- Acura Premium Sound System with 7 speakers, including subwoofer\*
- Pandora® compatibility<sup>5</sup>
- Active Sound Control (Except ILX Hybrid)
- USB audio interface with iPod® integration<sup>6</sup>
- Bluetooth streaming audio<sup>2</sup>
- MP3/auxiliary input jack
- Power moonroof with tilt feature
- Auto-on/off projector-beam halogen headlights
- Heated side mirrors
- 17-inch aluminum-alloy wheels

## ILX 6MT Exclusive Features

- 201-hp, 2.4-liter, 16-valve, DOHC i-VTEC 4-cylinder engine
- Close-ratio 6-speed manual transmission
- Red instrument illumination
- Contrast stitching for interior trim
- Aluminum sport pedals

## ILX Hybrid Exclusive Features

- 111-hp produced with 1.5-liter, 8-valve, SOHC i-VTEC 4-cylinder engine and Integrated Motor Assist
- Continuously Variable Transmission (CVT) with Sequential SportShift paddle shifters
- EcoAssist™ system
- Fuel Economy Indicator
- ECON mode button
- Sport seats with cloth-trimmed interior
- Acura sound system with 6 speakers
- Trunk spoiler
- Fog lights
- Chrome accent for lower front trim
- Tire sealant and inflator kit
- 16-inch aluminum-alloy wheels



## Premium Package

(Available for ILX; included with ILX 6MT)

- XM® Radio<sup>†</sup>
- Auto-on/off xenon high-intensity discharge (HID) headlights<sup>†</sup>
- Fog lights
- Auto-dimming rearview mirror<sup>†</sup>

## Technology Package

(Adds to or replaces standard/Premium Package features. Available for ILX or ILX Hybrid)

- Acura Navigation System with Voice Recognition™
- Zagat Survey® ratings and reviews
- AcuraLink Real-Time Traffic and Weather™<sup>4</sup>
- Traffic Rerouting™<sup>4</sup>
- 8-inch LED backlit VGA display
- Acura/ELS Surround® Premium Audio System with hard disk drive (HDD) media storage and 10 speakers
- Song By Voice®
- GPS-linked, solar-sensing, dual-zone automatic climate control system
- Note function music-reminder for XM Radio<sup>7</sup>
- Phone-book exchange for Bluetooth HandsFreeLink<sup>2</sup>
- Automated Appointments™
- HomeLink®

## Specifications

	ILX	ILX 6MT	ILX Hybrid
• Estimated Fuel Mileage <sup>1</sup> (City/Highway/Combined)	24   35   28	22   31   25	39   38   38
• Fuel Tank Capacity 13.2 U.S. gallons			
• Recommended Fuel <sup>8</sup> Premium unleaded 91 octane			
• Curb Weight	2955 lbs	NA	2959 lbs
• Curb Weight with Premium Package	2959 lbs	2978 lbs	NA
• Curb Weight with Technology Package	2970 lbs	NA	2987 lbs
• Headroom (Front/Rear) 38.0 in   35.9 in			
• Legroom (Front/Rear) 42.3 in   34.0 in			
• Shoulder Room (Front/Rear) 55.6 in   53.5 in			
• Hiproom (Front/Rear) 50.2 in   51.7 in			
• Passenger Volume 89.3 cu ft			
• Cargo Volume (ILX, ILX 6MT / ILX Hybrid) 12.3 cu ft   10.0 cu ft			
• Wheelbase 105.1 in   Length 179.1 in   Height 55.6 in   Width 70.6 in			

<sup>†</sup> Features included with ILX Hybrid with Technology Package

\* Excludes base ILX Hybrid



AS MUCH AS THE ILX WAS  
DESIGNED TO FIT YOUR  
LIFE, ACURA GENUINE  
ACCESSORIES LET YOU  
FINE-TUNE IT EVEN MORE.

01 FITTED ALL-WEATHER CAR COVER / 02 ILLUMINATED DOOR SILLS / 03 FOG LIGHTS,  
SPORT UNDERBODY KIT / 04 17-INCH DIAMOND-CUT ALLOY WHEELS / 05 TRUNK SPOILER

---





## Owner Benefits

When you purchase a vehicle with the exceptional quality of an Acura, you expect service and support to be of the same caliber. After all, a premium automobile is only part of the ownership experience. With Acura, you also get a commitment. To personalized care. To attentive service. This commitment is apparent the moment you first enter an Acura dealership and for years down the road. It comes from a belief that every aspect of owning an Acura should be an enjoyable and rewarding experience.

## Acura Limited Warranties<sup>9</sup>

All Acura vehicles and any Acura genuine accessories installed by the dealer at the time of vehicle purchase have a 4-year/50,000-mile limited warranty. Acura vehicles are also covered by a 6-year/70,000-mile limited powertrain warranty. In addition, outer body rust-through is covered by a 5-year/unlimited-mile limited warranty.

## Acura Financial Services<sup>10</sup>

This online service lets you weigh the benefits of leasing and financing, estimate your payments, see current offers and special financing programs and get pre-approved.

## Acura Care<sup>®</sup>

Additional peace of mind can be had with the Acura Care program – comprehensive vehicle and travel protection beyond the initial warranty period. See your Acura dealer for all the features and benefits available with this program.

## Total Luxury Care<sup>®</sup> (TLC<sup>®</sup>)<sup>11</sup>

Acura's commitment to your satisfaction doesn't end with the delivery of a world-class vehicle. As an Acura owner, you'll enjoy an array of services, like the Acura Concierge<sup>™</sup> for 24-hour weather information, insurance claims assistance or to help you plan a trip; Trip-Interruption benefits like alternative transportation, lodging and meals, and a 24-hour Roadside Assistance program.

## AcuraLink Owners Mobile App

Use your smartphone to connect with an Acura agent at the push of a button. Access a full range of Acura Roadside Assistance services using your Android<sup>®</sup> device or iPhone<sup>®</sup>, including comprehensive towing, lockout assistance, battery jump-start, tire change and fuel delivery with your phone's GPS technology providing your exact location. You can use the app to view scheduled time of arrival and contact information for the dispatched service provider. The app also offers a priority emergency button for urgent situations. Visit the Apple iTunes Store or shop Google Play to download this free app.



## 1-800-to-Acura

Operators are available 24 hours a day to help answer your Acura questions.

## Owners.Acura.com

The online help doesn't end when you take possession of your vehicle. Your complimentary Acura Owners personalized website gives the most current information about your vehicle, provides tips on how to care for your Acura, lets you keep a personalized maintenance record, sends you service reminders and lets you schedule service appointments online.

## acura.com

Learn more about Acura vehicles, including the latest specifications, see photo galleries and technology videos, and find out how our vehicles compare to the competition. You can also build and price your Acura, see current offers and even get a quote from an Internet-certified Acura dealer.

## Accessories

When it comes to personalizing, choose Acura genuine accessories that are crafted to the same strict levels of quality as the rest of your ILX. See your Acura dealer for a complete list of accessories or go to [acura.com](http://acura.com).

## AcuraLink

Acura has always had a penchant for seeing what's beyond the next horizon. Now it's your turn. The available AcuraLink<sup>®</sup> Satellite Communication System gives you a look ahead – whether it's up the road, or even days into the future. Services like the available AcuraLink Real-Time Traffic and Weather<sup>™4</sup> with its one- and three-day forecasts, help you plan your next move, even while you're focused on the here and now.

AcuraLink is also your connection with Acura, delivering a wealth of information like Quick Tips and updated Feature Guides to help you get the most out of your new vehicle's many sophisticated systems. When the system is paired with a Bluetooth<sup>®</sup>-compatible phone,<sup>2</sup> you can also get information on required services as they approach, and can schedule maintenance right from your car with the Automated Appointments<sup>™</sup> feature.



BLUE SKIES FOR  
OUR CHILDREN

Years ago, our engineers took on the challenge to meet the stringent emissions standards of the U.S. Clean Air Act and used the phrase "blue skies for our children" as a passionate rallying cry to devote themselves to this effort. Blue Skies for Our Children represents our environmental vision of a society where future generations can experience the joy and freedom of mobility while living within a sustainable society.



# 2014 ACURA ILX

## COLOR+ LEATHER SELECTIONS

ILX	EBONY CLOTH	PARCHMENT LEATHER*	EBONY LEATHER
BELLANOVA WHITE PEARL		•	•
SILVER MOON METALLIC			•
POLISHED METAL METALLIC		•	•
AMBER BROWNSTONE METALLIC		•	
CRYSTAL BLACK PEARL		•	•
FATHOM BLUE PEARL			•
CRIMSON GARNET PEARL		•	

\*Requires Premium or Technology Package.

### ILX 6MT

BELLANOVA WHITE PEARL			•
SILVER MOON METALLIC			•
POLISHED METAL METALLIC			•
CRYSTAL BLACK PEARL			•
FATHOM BLUE PEARL			•
CRIMSON GARNET PEARL			•

Leather-trimmed interior with contrast stitching standard.

### ILX HYBRID

BELLANOVA WHITE PEARL	•	•	•
SILVER MOON METALLIC	•		•
POLISHED METAL METALLIC	•	•	•
AMBER BROWNSTONE METALLIC		•	
CRYSTAL BLACK PEARL	•	•	•
FATHOM BLUE PEARL	•		•

Cloth-trimmed interior standard. Leather-trimmed seats requires Technology Package.

©2013 Acura. Acura, ILX, the stylized "A" logo, Acura Care, Acura Concierge, AcuraLink, AcuraLink Real-Time Traffic and Weather, Acura Navigation System with Voice Recognition, Advanced Compatibility Engineering (ACE), EcoAssist, HandsFreeLink, Song By Voice, Total Luxury Care (TLC), Traffic Rerouting, Vehicle Stability Assist (VSA) and i-VTEC are trademarks of Honda Motor Co., Ltd. Covered by patent rights issued and/or pending. Specifications, features, illustrations and equipment shown in this catalog are based upon the latest available information at the time of publication. Although descriptions are believed to be correct, accuracy cannot be guaranteed. All images contained herein are either owned by American Honda Motor Co., Inc., or used under a valid license. It is a violation of federal law to reproduce these images without express written permission from American Honda Motor Co., Inc., or the individual copyright owner of such images. American Honda Motor Co., Inc., reserves the right to make changes at any time, without notice or obligation, in colors, specifications, accessories, materials and models. The Bluetooth® word mark and logos are owned by the Bluetooth SIG, Inc., and any use of such marks by Honda Motor Co., Ltd., is under license. Dolby, Pro Logic, and the double-D symbol are registered trademarks of Dolby Laboratories. ELS Surround is a registered trademark of Panasonic Corporation of North America. All rights reserved. GRAMMY is a registered trademark of The Recording Academy and is used under license. iPod is a registered trademark of Apple Inc. Pandora, the Pandora logo, and the Pandora trade dress are trademarks or registered trademarks of Pandora Media, Inc. Used with permission. The XM name, XM NavTraffic, and XM NavWeather are trademarks of SIRIUS XM Radio, Inc. and its subsidiaries. Zagat Survey® is a registered trademark of Zagat Survey, LLC. Make an intelligent decision. Fasten your seat belt. <sup>1</sup>2013 ILX Hybrid fuel economy figures based on 2013 EPA mileage ratings. Use for comparison purposes only. Your actual mileage will vary depending on how you drive and maintain your vehicle. <sup>2</sup>Visit [www.handsfreelink.com](http://www.handsfreelink.com) for a list of compatible phones and available features. <sup>3</sup>Compatible with select phones with Bluetooth®. Your wireless carrier's rate plans apply. State or local laws may limit use of texting feature. Only use texting feature when conditions allow you to do so safely. <sup>4</sup>AcuraLink Real-Time Traffic and Weather,™ as well as Traffic Rerouting,™ require monthly premium XM NavTraffic® and NavWeather™ subscriptions. Navigation-equipped vehicles include 90 days of XM NavTraffic and NavWeather service. XM NavTraffic is only available in select markets. <sup>5</sup>Compatible with select Apple® iPhone® devices only. Your wireless carrier's rate plans apply. <sup>6</sup>The USB Audio Interface is used for direct connection to and control of some current digital audio players and other USB devices that contain MP3, WMA, or AAC music files. Some USB devices with security software and digital rights-protected files may not work. Please see your dealer for details on compatibility. <sup>7</sup>XM services require a subscription after 90-day trial period. Subscriptions governed by XM Customer Agreement available at [xmradio.com](http://xmradio.com). If you decide to continue your XM service at the end of your complimentary trial, the plan you choose will automatically be renewed and you will be billed at then-current rates unless you call 1-800-967-2346 to cancel. Fees and programming subject to change. Available only to those at least 18 years of age in the 48 contiguous United States and D.C. ©2013 SiriusXM Radio Inc. Sirius, XM and all related marks and logos are trademarks of SiriusXM Radio Inc. and its subsidiaries. <sup>8</sup>Using gasoline with an octane lower than 87 may cause damage to the engine. Please see your Acura dealer for details. <sup>9</sup>Ordinary maintenance items or adjustments, parts subject to normal wear and replacement, and certain other items are excluded. See your Acura dealer for the terms and conditions of limited warranties. <sup>10</sup>Acura Financial Services is a DBA of American Honda Finance Corporation. <sup>11</sup>See your local dealer for details about Total Luxury Care (TLC) Roadside Assistance and Concierge service.



EXTERIOR

BELLANOVA WHITE PEARL

*Ebony Cloth / Parchment Leather / Ebony Leather*

SILVER MOON METALLIC

*Ebony Cloth / Ebony Leather*

POLISHED METAL METALLIC

*Ebony Cloth / Parchment Leather / Ebony Leather*

AMBER BROWNSTONE METALLIC

*Parchment Leather*

CRYSTAL BLACK PEARL

*Ebony Cloth / Parchment Leather / Ebony Leather*

FATHOM BLUE PEARL

*Ebony Cloth / Ebony Leather*

CRIMSON GARNET PEARL

*Parchment Leather / Ebony Leather*

INTERIOR

EBONY CLOTH

PARCHMENT LEATHER

EBONY LEATHER



Want to personalize your Acura experience?  
Visit Acura.com.

### Request a Quote

1 Select Model 2 Select Dealer 3 Enter Contact Information

Follow the steps for a quick and easy dealer quote on a new Acura

**SELECT A MODEL** Compare ILX Models Starting at:

- 2013 ILX 5-Speed Automatic \$25,900
- 2013 ILX 5-Speed Automatic with Premium Package \$29,200
- 2013 ILX 5-Speed Automatic with Technology Package \$31,400
- 2013 ILX 5-Speed Manual with Premium Package \$29,200
- 2013 ILX Hybrid CVT \$28,900
- 2013 ILX Hybrid CVT with Technology Package \$34,400

**SELECT COLORS** Click a color to select

Exterior Color: Polished Metal Metallic  
Interior Color: Ebony

Enter Zip Code  
Enter Zip Code: 90732

To select accessories, use the Build and Price tool.

**Model**  
2013 ILX 5-Speed Automatic  
MSRP \$25,900

**Colors**  
Exterior: Polished Metal Metallic  
Interior: Ebony

**Destination** \$895

**Total Price\*** \$26,795

\* Prices shown are Acura suggested retail prices only and do not include tax, title, license or registration fees. Acura vehicle accessories, color, color and destination vary. Dealers set their own prices. Please consult your selected dealer.

REQUEST A QUOTE

### Build Your ILX: Model

Model Colors Exterior Accessories Interior Accessories Summary

**Model**  
2013 ILX 5-Speed Automatic Starting at \$25,900

**Colors**  
2013 ILX 5-Speed Automatic with Premium Package Starting at \$29,200

**Exterior Accessories**  
2013 ILX 5-Speed Automatic with Premium Package Starting at \$31,400

**Interior Accessories**  
2013 ILX Hybrid CVT Starting at \$28,900

**Summary**  
2013 ILX Hybrid CVT with Technology Package Starting at \$34,400

**Total as Configured\*** \$26,795

\* Prices shown are Acura suggested retail prices only and do not include taxes, license or a \$500 destination and handling charge. Acura vehicle accessories, color, color and destination vary. Dealers set their own prices. Please consult your selected dealer.

BUILD AND PRICE

### SEARCH FOR A DEALER

Zip Code: 90732 Address, City, State: Dealer Name: SEARCH

Distance from Zip: 20 Miles

### YOUR LOCAL DEALERS

Showing 2 of 2 results

**Power Acura South Bay**  
Acura South Bay  
View Dealer Website

Address  
25041 Crenshaw Blvd  
Torrance, CA 90505-6120  
San Francisco

Internet Manager  
Brian Deads

Sales Phone: (310) 538-3636  
Service Phone: (310) 538-3636  
Parts Phone: (310) 538-3636

Sales Hours  
Mon-Thurs 9:00AM - 6:00PM  
Fri-Sat 9:00AM - 5:00PM  
Sun 10:00AM - 7:00PM  
All Department Hours

**REQUEST A QUOTE**

**Vehicle Inventory**

Map showing location of Power Acura South Bay in Torrance, CA.

DEALER LOCATOR

### Current Offers

LEASE VS. FINANCE APPLY FOR FINANCING

SHOWING OFFERS FOR ZIP CODE: 90732 100

### Featured Offer

**2013 ILX 5-Speed Automatic Featured Lease**

\$259 per month for 36 months  
\$2999 total due at signing

Includes down payment with no security deposit. Excludes taxes, title and fees. For well-qualified lessees.

[Full Description & Terms](#) [Print Offer](#) [Email Offer](#)

[REQUEST A QUOTE](#)

### Lease Offers

2013 ILX 5-Speed Automatic with Premium Package  
Featured Lease

\$299 per month for 36 months  
\$3999 total due at signing

Includes down payment with no security deposit. Excludes taxes, title and fees. For well-qualified lessees.

[Full Description & Terms](#) [Print Offer](#) [Email Offer](#)

[REQUEST A QUOTE](#)

### Finance Offers

Please see your local Acura dealer for available offers.

[LOCATE A DEALER](#)

CURRENT OFFERS



acura.com