

*THIS IS
ILX*

2015



ST
YL
ISH





THE 2015 ILX

Move up.
Without settling down.

The Acura ILX is for those who want more from a compact sedan. Rich in amenities and style, its bold lines and sophisticated technologies make ILX a considerable status update. With five different trim levels to choose from, including a hybrid system, the ILX fuses exhilarating performance with fuel efficiency. And then some.

PERFORMANCE

The starting blocks of luxury, efficiency and performance.

2.4-LITRE, i-VTEC® 4-CYLINDER ENGINE*

For those who believe their ride should be as exhilarating as it is luxurious, there is the ILX Dynamic. With a 2.4-litre, DOHC, i-VTEC 4-cylinder engine, it gives you a powerful 201 horsepower and 170 lb.-ft. of torque. And with its close-ratio 6-speed manual transmission, sport-inspired thrills are waiting around every corner.

**Available in the ILX Dynamic.*

THREE TRANSMISSIONS

The ILX gives you plenty of choice with its three transmissions to choose from. The standard automatic transmission is partnered with Sequential SportShift® paddle shifters and Grade Logic Control for solid and efficient performance. If fuel economy is essential for you, the ILX Hybrid comes with a Continuously Variable Transmission (CVT), as well as Sequential SportShift paddle shifters and Grade Logic Control. And for drivers who want to amp up their experience even more, the ILX Dynamic has a close-ratio 6-speed manual transmission.

SEQUENTIAL SPORTSHIFT® PADDLE SHIFTERS

Intuitively placed Sequential SportShift paddle shifters and Grade Logic Control helps ensure that every gear change is fluid and flawless. Shifting will seem effortless as the line between driver and car begins to blur.

None of the features we describe are intended to replace the driver's responsibility to exercise due care while driving. Drivers should not use handheld devices or operate certain vehicle features unless it is safe and legal to do so. For additional feature information, limitations and restrictions, please visit www.acura.ca/disclaimers or refer to the vehicle's owner's manual.





CONFIDENCE-INSPIRING HANDLING

If you expect a compact sport sedan to be nimble and sporty, then the ILX is perfect for you. The MacPherson strut front suspension helps enhance your handling and ride comfort, while the Amplitude Reactive Damper is designed to react to the road conditions to adjust your drive to suit the surface you're driving on and exactly how you're driving it. Get ready to carve corners with incredible precision.

ADVANCED STEERING

Connecting with the ILX happens as soon as you unleash it on the road. The Motion-Adaptive Electric Power-Assisted Rack-and-Pinion Steering (EPS) lets you enjoy an incredibly responsive ride with exceptional control, precise maneuverability and remarkable handling.

17-INCH WHEELS*

The ILX makes a bold statement. Its striking appearance is accentuated by the 17-inch alloy wheels. The larger wheels don't just give the ILX a heavy dose of street style, they let you handle even more of the road.

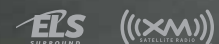
*Excluding ILX Hybrid.

HANDLING

Bring on the on-ramps.

TECHNOLOGY

Synchronicity reimagined
and redefined.



HANDS-FREE COMMUNICATION

You'll connect with the ILX and the ILX will keep you connected. Program and link your Bluetooth®-enabled mobile phone to the HandsFreeLink™-bilingual Bluetooth® wireless mobile phone interface to seamlessly make and receive calls over the vehicle's audio system. And manage it all with steering wheel-mounted controls.

SMS TEXT MESSAGE FUNCTION†

Standard on all ILX trim levels, the SMS text message function reads incoming texts over the audio system and lets you respond with one of multiple preset replies, with the ease of responding from steering wheel-mounted controls.

†SMS text message function is only compatible with certain devices.

VERY HIGH FIDELITY

This is the sound of luxury. The available 10 speaker Acura/ELS Surround® 365-watt Premium Audio System* with AM/FM/CD/SiriusXM,™ DVD-Audio and Dolby® Pro Logic™ II makes every drive an incredible sounding one. And with the hard disk drive (HDD) media storage and USB connector, you're always driving to your own beat.

*Available with the Technology package, ILX Dynamic and ILX Hybrid.

ACURA NAVIGATION SYSTEM WITH VOICE RECOGNITION™**

Long drives are a given with the ILX – but getting lost isn't. The available satellite-linked navigation system can pinpoint your location almost anywhere in North America or access its onboard search directory. The system is equipped with bilingual voice recognition software and offers real-time directions by either voice or moving-map display. Just ask and the system can show you the most direct route to your destination or, with the Zagat Survey® ratings, help you find a restaurant based on the type of cuisine you're craving.

**Available with the Technology package, ILX Dynamic and ILX Hybrid.

SMART ENTRY WITH PUSHBUTTON START

Technology that makes things easier, not complicated. That's Acura. And that's smart entry with pushbutton start. You can unlock the vehicle and start it without even having to take your key fob out of your pocket.

MULTI-ANGLE REARVIEW CAMERA WITH GUIDELINES

Acura has your back with the standard multi-angle rearview camera with guidelines. An image appears in the 5-inch colour information display or the navigation system display with the ILX Technology and ILX Dynamic and Hybrid Packages, providing you with a clear view from behind your vehicle. Even if the navigation system is turned off, the camera is activated automatically when you engage reverse.

None of the features we describe are intended to replace the driver's responsibility to exercise due care while driving. Drivers should not use handheld devices or operate certain vehicle features unless it is safe and legal to do so. For additional feature information, limitations and restrictions, please visit www.acura.ca/disclaimers or refer to the vehicle's owner's manual.



**LEATHER-WRAPPED STEERING WHEEL
AND SHIFT KNOB**

If luxury is in the details, then the ILX has it in spades. Standard on every ILX trim level are the leather-wrapped steering wheel and shift knob. Yet another luxurious touch ensuring the ILX is refined and sophisticated.

**ONE-TOUCH
POWER MOONROOF**

Convenient, easy to use and a nice little touch of luxury. At the simple push of a button, the one-touch power moonroof will fully open or close. The tilt feature allows for controlled ventilation and the sliding shade lets you adjust the amount of light you want.

VERSATILITY

You are the centre
of attention.



INTERIOR

Your comfort zone.



LUXURIOUS SEATING

Settle into luxury. The available tightly bolstered seating with sophisticated perforated leather trim is engineered to keep you comfortable. What's more, drivers benefit from an 8-way power-adjustable seat.* And both driver and front passenger enjoy heated seats.

*Available with the Premium and Technology packages, ILX Dynamic and ILX Hybrid.

ONE-TOUCH DIRECTIONAL SIGNALS

Convenient and intuitive, one-touch directional signals help you stay focused on driving. With a single touch, the indicator will blink a set number of times. Perfect for highway lane changes, they help make your driving experience that much smoother.



HYBRID

Efficiency meets luxury.
They embrace.

ILX HYBRID

The ILX Hybrid is the first hybrid from Acura. Built on a 1.5-litre, i-VTEC® 4-cylinder engine with Integrated Electric Motor, it is designed to help you make less of an impact on the environment while also spending less time at the gas pumps. Its Continuously Variable Transmission (CVT) with Sequential SportShift® paddle shifters, ECON mode and rear spoiler all work together to help the ILX Hybrid achieve solid fuel efficiency.

ECON MODE

ECON mode, available exclusively in the ILX Hybrid, is a simple and easy way to help minimize your fuel consumption. When pressing the ECON button, the ILX will automatically adjust the engine and other functions to go into high-efficiency mode.



SAFETY

Safety Through Innovation.

At Acura, Safety Through Innovation is based on the idea that an advanced driving experience starts with advanced safety features. This guiding principle is reinforced through the extensive number of standard safety features and use of innovative technologies you'll find in all Acura vehicles.

HIGH-INTENSITY DISCHARGE (HID) HEADLIGHTS

See and be seen. Producing an intensely brilliant beam of focused light, standard HID headlights enhance your ability to identify what's ahead. And they'll not only light up the road, their striking appearance will also turn heads.

HILL START ASSIST

Like every Acura vehicle, the ILX benefits from a wide range of advanced safety features, including Hill Start Assist, which is designed to help prevent the vehicle from rolling backwards when on an incline. If you switch from the brake pedal to the accelerator while stopped on a hill, the system is designed to activate and halt the vehicle.

VEHICLE STABILITY ASSIST (VSA®)

VSA with Traction Control is designed to automatically detect and correct understeer or oversteer situations, sometimes before you're aware there's a problem. The system is designed to intuitively analyze conditions and reduce throttle and/or apply braking to individual wheels. Should a loss of traction occur on a slippery surface, Traction Control will help ensure you get underway safely.

ACE™ BODY STRUCTURE

The Advanced Compatibility Engineering™ (ACE) body structure utilizes a high-tensile, high-efficiency steel body structure to provide enhanced protection from a multi-directional collision. ACE reduces the force of a frontal impact by absorbing energy over a large area and dispersing it away from you and other occupants of the cabin. ACE is also designed to help reduce occupant injuries caused by misalignment in collisions between vehicles of different sizes.

None of the features we describe are intended to replace the driver's responsibility to exercise due care while driving. Drivers should not use handheld devices or operate certain vehicle features unless it is safe and legal to do so. For additional feature information, limitations and restrictions, please visit www.acura.ca/disclaimers or refer to the vehicle's owner's manual.

ANTI-LOCK BRAKES

The 4-wheel Anti-lock Braking System (ABS) helps you maintain steering control when braking hard on wet, slippery or loose surfaces, while Electronic Brake-force Distribution (EBD) and Brake Assist is designed to balance braking forces at each wheel to help compensate for cargo and passenger weight distribution inside the cabin.

FRONT SIDE AND SIDE CURTAIN AIRBAGS

Significant level of safety is achieved with multiple airbags designed to protect all occupants inside the cabin. Depending on the point and force of impact, the ILX will deploy dual-stage, multiple-threshold front airbags (SRS) that activate at one of two rates depending on the severity of the impact; front side airbags with the innovative passenger-side Occupant Position Detection System (OPDS) that will not release if the system detects a child or small-sized passenger; and side curtain airbags with a state-of-the-art rollover sensor.

ILX

Specifications

ENGINE	
Engine	2.0-litre, SOHC, i-VTEC® 4-cylinder
Horsepower	150 hp @ 6500 rpm
Torque	140 lb.-ft. @ 4300 rpm
Displacement	1997 cc
Bore and stroke	81 x 97 mm
Compression ratio	10.6:1
Emissions	Tier 2 Bin 5
Recommended fuel	Premium unleaded
<small>Horsepower & Torque (SAE net Rev. 08/04, SAE J1349)</small>	

DRIVETRAIN

Automatic transmission with Sequential SportShift® paddle shifters and Grade Logic Control
Drive-by-Wire Throttle System™
Hill Start Assist
Front-wheel drive

FUEL ECONOMY

City/Hwy/Combined	9.7/6.7/8.3 litres/100 km [†]
City/Hwy/Combined (ILX Dynamic)	10.8/7.4/9.3 litres/100 km [†]
City/Hwy/Combined (ILX Hybrid)	6.0/6.1/6.1 litres/100 km [†]

CAPACITIES

Fuel tank capacity	50 litres
Passenger volume	2530 litres
Cargo volume	348 litres
Cargo volume (ILX Hybrid)	283 litres

SAFETY

3-point seat belts with Automatic Tensioning System (front)
4-wheel Anti-lock Braking System (ABS) with Electronic Brake-force Distribution (EBD) and Brake Assist
Advanced Compatibility Engineering™ (ACE™) body structure
Childproof rear door locks
Dual-stage, multiple-threshold front airbags (SRS)
Front side airbags with passenger-side Occupant Position Detection System (OPDS)
Immobilizer Theft-Deterrent System
Security system
Side curtain airbags
Vehicle Stability Assist (VSA®) with Traction Control

EXTERIOR

Body-coloured door handles
Body-coloured heated folding power side mirrors with expanded view driver's mirror
Front splash guards
One-touch power moonroof with tilt feature
High-Intensity Discharge (HID) headlights

CHASSIS

17" x 7" alloy wheels
Amplitude Reactive Damper
Compact spare tire
Front and rear stabilizer bars
MacPherson strut front suspension
Motion-Adaptive Electric Power-Assisted Rack-and-Pinion Steering (EPS)
Multi-link rear suspension
Power-assisted, ventilated front disc/solid rear disc brakes
Tires: P215/45 R17 87V all-season

EXTERIOR DIMENSIONS

Curb weight	1333 kg
Curb weight (Premium Package)	1339 kg
Curb weight (Technology Package)	1350 kg
Curb weight (ILX Dynamic)	1359 kg
Curb weight (ILX Hybrid)	1356 kg
Ground clearance – full-load	113 mm
Ground clearance – full-load (ILX Dynamic)	106 mm
Ground clearance – full-load (ILX Hybrid)	117 mm
Gross vehicle weight rating	1800 kg
Height	1412 mm
Length	4550 mm
Steering ratio	15.13
Steering turns lock-to-lock	2.87
Track – front/rear	1509/1532 mm
Wheelbase	2670 mm
Width	1794 mm

SEATING & TRIM

Driver's seat with manual height adjustment
Floor mats
Fold-down rear seatback^{††}
Fold-down rear-seat centre armrest
Leather-wrapped steering wheel and shift knob

COMFORT & CONVENIENCE

5-inch colour information display
Auto-on/off headlights
Ambient cabin lighting
Driver's and front passenger's illuminated vanity mirrors
Dual-zone automatic climate control system with air filtration
HandsFreeLink™-bilingual Bluetooth® wireless mobile phone interface with steering wheel-mounted controls
One-touch directional signals
Maintenance Minder™ system
Map lights
Multi-angle rearview camera[‡] with guidelines
Power windows with driver's and front passenger's auto-up/down operation
Remote fuel filler door release
Smart entry with pushbutton start
SMS text message function*
Steering wheel-mounted audio and cruise controls
Tilt and telescopic steering column
Variable intermittent windshield wipers

ENTERTAINMENT

Premium Sound System with AM/FM/CD tuner with MP3/Windows Media® Audio capability and 7 speakers including subwoofer
MP3/auxiliary input jack
USB device connector

INTERIOR DIMENSIONS

Headroom – front/rear	964/913 mm
Hip room – front/rear	1276/1312 mm
Legroom – front/rear	1074/864 mm
Shoulder room	1412/1360 mm
Seating capacity	5

<small>None of the features we describe are intended to replace the driver's responsibility to exercise due care while driving. Drivers should not use handheld devices or operate certain vehicle features unless it is safe and legal to do so. For additional feature information, limitations and restrictions, please visit www.acura.ca/disclaimers or refer to the vehicle's owner's manual.</small>
<small>*Only compatible with certain devices.</small>
<small>**Includes a no-charge trial of 3 months, beyond which service fees apply. Available in 10 Canadian provinces and 48 contiguous U.S. states. See terms and conditions at www.siriusxm.ca.</small>
<small>†Estimated fuel economy based on Government of Canada's new 5-cycle testing method. Your actual fuel consumption will vary based on driving habits and other factors – use for comparison only. For more information on 5-cycle testing, visit http://www.nrcan.gc.ca/energy/efficiency/transportation/cars-light-trucks/buying/7491</small>
<small>††Not available on ILX Hybrid.</small>
<small>‡Does not replace the driver's responsibility to exercise due care while driving.</small>

PACKAGES

PREMIUM PACKAGE

(Adds to ILX features)

Automatic day/night rearview mirror
Driver's seat with 8-way power adjustment
Fog lights
Heated front seats
Leather-trimmed seats
Premium Sound System with SiriusXM™*** and 7 speakers including subwoofer

TECHNOLOGY PACKAGE

(Adds to Premium Package)

8-inch LED backlit VGA display
Acura Navigation System with Voice Recognition™
Acura/ELS Surround® 365-watt Premium Audio System with AM/FM/CD/SiriusXM,™*** 10 speakers, hard disk drive (HDD) media storage, DVD-Audio and Dolby® Pro Logic™ II
HomeLink® remote system

ILX DYNAMIC

(Adds to Technology Package)

2.4-litre, DOHC i-VTEC® 4-cylinder engine
Horsepower: 201 hp @ 7000 rpm
Torque: 170 lb.-ft. @ 4400 rpm
Displacement: 2354 cc
Bore and stroke: 87 x 99 mm
Compression ratio: 11:1
Close-ratio 6-speed manual transmission (MT)
Metal racing pedals

ILX HYBRID

(Adds to or replaces Technology Package)

1.5-litre, SOHC, i-VTEC® 4-cylinder engine with Integrated Electric Motor
Horsepower: 111 @ 5500 rpm
Torque: 127 lb.-ft. between 1000 and 3500 rpm
Displacement: 1497 cc
Bore and stroke: 73 x 89 mm
Compression ratio: 10.8:1
Emissions: Tier 2 Bin 3
16" x 6.5" alloy wheels
Tires: P205/55 R16 89H all-season
Continuously Variable Transmission (CVT) with Sequential SportShift® paddle shifters and Grade Logic Control
Ecological Drive Assist System™ (Eco Assist™)
ECON mode button
Tire Repair Kit (TRK)
Rear spoiler

ACURA

Make it yours.

Choose from an array of genuine Acura accessories that give you the practical luxuries and advanced styling that will bring you together with your machine.

FUNDAMENTAL PACKAGE

- Cargo hook
- Cargo net

AERO KIT

- Rear deck lid spoiler
- Front underbody spoiler
- Side underbody spoiler
- Rear underbody spoiler

LAUNCH KIT

- Rear deck lid spoiler
- Front underbody spoiler
- Side underbody spoiler
- Rear underbody spoiler
- 17" Alloy wheel – Diamond cut

PROTECTION PACKAGE

- All-season floor mats
- Rear splash guards
- Trunk tray

REMOTE ENGINE STARTER PACKAGE – GEN II

- Base unit
- Attachment
- Key FOB

SHOWROOM PACKAGE

- All-season floor mats
- Trunk tray
- Illuminated door sill trim

Accessories listed in the packages may also be added individually to your ILX.

ACCESSORIES AVAILABLE

- Ashtray, cupholder style
- Auto day/night mirror
- Body side molding
- Car cover
- Door edge film
- Engine block heater
- Fog lights
- Hood edge deflector
- Paint pen
- Rear bumper appliqué
- Trunk edge and bumper protector
- Wheel locks



REAR DECK LID SPOILER



BODY SIDE MOLDING



CAR COVER



TRUNK TRAY



17" ALLOY WHEEL - DIAMOND CUT



ILLUMINATED DOOR SILL TRIM

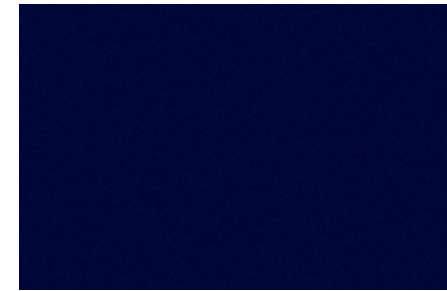
ILX

Colour and Trim Guide

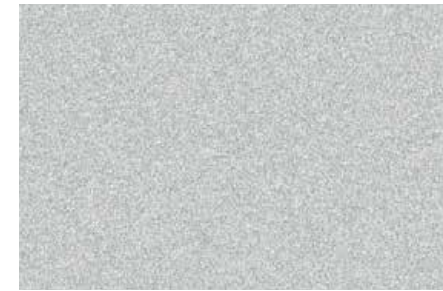
Our colour and trim range is an extension of our commitment to craftsmanship and elegance.

A palette of timeless exterior colours is complemented by equally refined interior options and a superior grade of leather trims. These are the finishing touches that elevate your relationship with your Acura, and the road, at every turn.

EXTERIOR ILX



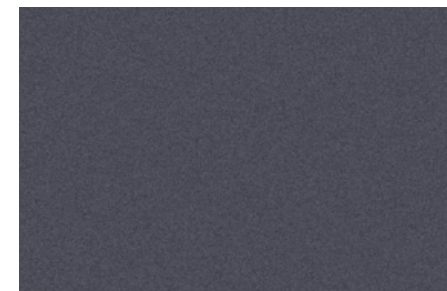
Fathom Blue Pearl • B-576P



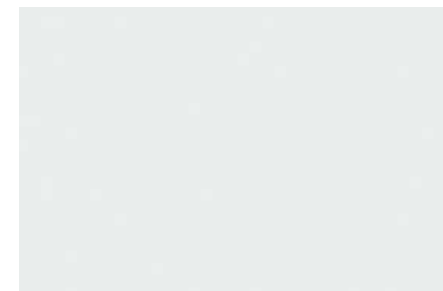
Alabaster Silver Metallic • NH-700M



Crystal Black Pearl • NH-731P



Modern Steel Metallic • NH-797M



Bellanova White Pearl • NH-788P



Carnelian Red Pearl • R-543P

INTERIOR IL X



Ebony Premium Cloth



Ebony Leather



Parchment Leather

EXTERIOR COLOURS	ILX	PREMIUM PACKAGE	TECHNOLOGY PACKAGE	ILX DYNAMIC	ILX HYBRID
Fathom Blue Pearl • B-576P	N/A	Ebony Leather	Ebony Leather	Ebony Leather	Ebony Leather
Alabaster Silver Metallic • NH-700M	Ebony Premium Cloth	Ebony Leather	Ebony Leather	Ebony Leather	N/A
Crystal Black Pearl • NH-731P	Ebony Premium Cloth	Ebony or Parchment Leather	Ebony or Parchment Leather	Ebony Leather	Ebony or Parchment Leather
Modern Steel Metallic • NH-797M	N/A	Ebony Leather	Ebony Leather	Ebony Leather	N/A
Bellanova White Pearl • NH-788P	Ebony Premium Cloth	Ebony Leather	Ebony or Parchment Leather	Ebony Leather	Ebony Leather
Carnelian Red Pearl • R-543P	N/A	Ebony Leather	Ebony Leather	Ebony Leather	N/A

At Acura, when innovation and performance meet purpose, remarkable things can be achieved. Through our commitment and continued involvement with events and organizations across Canada, we seek to create engaging and inspiring experiences for our customers and our community. Because at Acura we believe exhilaration goes beyond the driver's seat.



Acura is honoured to be the Canadian broadcast sponsor of golf's most historic and time-honoured tournament. The Masters is golf's first major open of the season and is famous for its ceremonial "Green Jacket" winner's presentation.



Mobile Clinics
Presented by Acura

Acura is proud to be the official vehicle sponsor of the CN Future Links Mobile Golf Clinics. Close to 70,000 junior golfers are expected to participate in the clinics facilitated by the ten provincial golf associations, each of which are provided a current model year MDX from Acura.

Driving a luxury vehicle should go beyond engineering and amenities. That's why Acura is committed to ensuring your ownership experience is equally luxurious. New Acura owners benefit from four-year 24-hour Roadside Assistance, which includes Dispatch Emergency Roadside Service, Emergency Lockout Service and Traffic Accident Services. See your Acura Retailer for details.

WARRANTY

Your new Acura vehicle comes with the following warranties: Major Component – 5-year/100,000-km limited warranty • Vehicle – 4-year/80,000-km Distributor's limited warranty • Rust Perforation – 5-year unlimited-distance warranty • Surface Corrosion – 4-year/80,000-km • Accessories – 4-year/80,000-km limited warranty (when installed by an authorized Acura Retailer at time of new vehicle delivery). Regular maintenance items and parts are subject to normal wear and replacement, and are not covered by warranty. Certain other items are excluded and certain conditions apply. See your Acura Retailer for details.

ACURA PLUS

Extend your worry-free ownership experience by purchasing additional coverage. Choose from Acura's flexible selection of Mechanical Coverage that extends up to 8 years or 200,000 km, whichever comes first. See your Acura Retailer for details.

LEASING AND FINANCING

Owning your Acura is easy. See your Acura Retailer for complete details on Conventional Financing.*

**A genuine service of Acura Financial Services. Conditions, restrictions and prepayment requirements might apply O.A.C.*

None of the features we describe are intended to replace the driver's responsibility to exercise due care while driving. Drivers should not use handheld devices or operate certain vehicle features unless it is safe and legal to do so. For additional feature information, limitations and restrictions, please visit www.acura.ca/disclaimers or refer to the vehicle's owner's manual.

Acura reserves the right to terminate or change any of the services and/or features at any time, for any reason. Certain features require registration and may transmit to Acura and/or its providers a vehicle's location, operating conditions or other information that may be tied to the vehicle identification number (VIN) and can be combined to create a track of a vehicle. For Acura's data use and privacy policy, see www.acura.ca/owners/acuralink.

2015 ILX model shown. Specifications, features, illustrations and equipment shown in this catalogue are based upon the latest available information at the time of publication. Remember your seat belts. It's a simple fact of life. Although descriptions are believed to be correct, accuracy cannot be guaranteed. Honda Canada Inc. reserves the right to make changes at any time, without notice or obligation, in colours, specifications, accessories, materials and models. Some vehicles are shown with optional equipment. Some vehicles shown are U.S. models. Canadian specifications may vary. Map Database of the Acura Navigation System covers major metropolitan areas in southern Canada and the 48 contiguous U.S. states. For a list of current detailed coverage areas, refer to the Acura web site, www.acura.ca. Bluetooth is a registered trademark of SIG Inc. Dolby and Pro Logic are registered trademarks or trademarks of Dolby Laboratories. ELS Surround is a registered trademark of Panasonic Corporation of North America. HomeLink and HandsFreeLink are registered trademarks or trademarks of Johnson Controls Technology. HomeLink can be programmed with codes of up to three remote-control devices (e.g., garage-door opener, home security system, etc.). Additional control devices not provided by Acura may be required. Windows Media is a registered trademark of Microsoft Corporation. © 2014 Sirius XM Canada Inc. "SiriusXM", the SiriusXM logo, channel names and logos are trademarks of SiriusXM Radio Inc. and are used under license. Zagat is a registered trademark of Zagat Survey, LLC. Acura, ILX, i-VTEC, ACE, Advanced Compatibility Engineering, Acura Navigation System with bilingual Voice Recognition, Drive-by-Wire Throttle System, Eco Assist, Ecological Drive Assist System, Maintenance Minder, SportShift and VSA are trademarks of Honda Motor Co., Ltd. Acura, a division of Honda Canada Inc., 180 Honda Boulevard, Markham, Ontario, Canada L6C 0H9. 1-888-9-ACURA-9. www.acura.ca.