

2004 COLORADO



2004 COLORADO



CHEVY TRUCKS

COLORADO

COLORADO 2004

**It's Chevy's first mid-size pickup.
And it's already in a class of its own.**

As the builder of the most dependable, longest-lasting trucks* on the road, Chevy knows how to get the most out of its engineering expertise. And Chevy's put all that experience to very good use in building its first mid-size pickup. From the moment you see its muscular form, it's clear that the all-new Colorado represents not only a new chapter in the history of Chevy Trucks, but also a new era in mid-size pickups. It's the first mid-size pickup that delivers rock-solid Chevy strength – and that's only the beginning of the firsts achieved by Colorado. It has the most powerful four-cylinder engine in its segment, with the 175 hp Vortec 2800 in-line four.** Its 220 hp Vortec 3500 in-line five cylinder engine is more powerful than any competitor's V6.** And all Regular Cab, Extended Cab and Crew Cab models are available with either Z08 Sport, Z71 Off-Road or Z85 Standard suspensions. As well, both Z71 and Z85 suspensions are available in either 2WD or 4x4 models – giving you more choice than any other pickup in its class. So now, at last, you have a choice – with the introduction of the truck that will forever change your concept of mid-size pickup capability: the all-new 2004 Chevy Colorado.

*Dependability based on longevity. 1981–July 2002 full-line light-duty truck company registrations. Excludes other GM divisions.
**All competitive claims based on GM medium pickup segment and 2003 model year competitive data. Excludes other GM divisions.

Find more information about Chevy Colorado at gmcanada.com



CHEVY TRUCKS



COLORADO Crew Cab

**Lots of room for six passengers.
And for everything else you bring with them.**

Trust Chevy to build a mid-size pickup that not only seats up to six in real comfort, but also provides the kind of strength and capabilities that Chevy is famous for. The kind of capabilities you need to bring your lifestyle to life. So on top of a roomy cab, you get a pickup box that's more than 1500 mm (60 in.) in length and provides 1039 L (36.7 cu. ft.) of cargo volume. The maximum trailering capacity is equally impressive – up to 1814 kg (4000 lb.).* And the maximum GVWR goes all the way up to 2404 kg (5300 lb.). The new Colorado Crew Cab – we put a lot into it. So you can too.

*When properly equipped.

BELOW:

- a. Colorado Crew Cab with Z85 Standard suspension, shown in Dark Green Metallic.
- b. Colorado Crew Cab with ZQ8 Sport suspension, shown in Black.



a.



b.

LEFT: Colorado Crew Cab with Z71 Off-Road suspension, shown in Sunset Orange Metallic.



COLORADO **Extended Cab**

The versatility is also extended.

No matter how you measure a pickup's capabilities, Colorado Extended Cab is sure to measure up. Its cargo box is the deepest in its segment.* It's more than 1850 mm (6 ft.) long and allows for a maximum payload of up to 750 kg (1654 lb.). That's the kind of capacity you need to handle the demands of your work and play. But the numbers don't tell the whole story. Eight tie-down anchors help keep all that cargo secure. Inside, all models feature standard rear forward-facing jump seats that fold up to increase the cargo area. In Colorado Extended Cab, the chassis is tremendously rigid, but the interior is tremendously flexible.

*Based on GM medium pickup segment and 2003 model year competitive data. Excludes other GM divisions.

BELOW:

- a. Colorado Extended Cab with ZQ8 Sport suspension, shown in Victory Red.
- b. Colorado Extended Cab with Z71 Off-Road suspension, shown in Sunset Orange Metallic.



a.



b.

AT LEFT: Colorado Extended Cab with Z85 Standard suspension, shown in Indigo Blue Metallic.



COLORADO **Regular Cab**

Redefining the meaning of "Regular".

About the only thing regular about the Colorado Regular Cab with ZQ8 Sport suspension is the size of the cab. In attitude, this is a street rod. And that's not just because of its take-no-prisoners styling – with its lowered stance, monochromatic colour scheme and 17" x 8" aluminum wheels. It also has the performance engineering to back up the bravado, with low-profile tires and specific monotube shocks, in addition to front and rear stabilizer bars. In other words, the attention-grabbing looks of this Regular Cab only point the way to an equally bold approach to driving. And there's nothing "regular" about that.

BELOW:

- a. Colorado Regular Cab with Z85 Standard suspension, shown in Victory Red.
- b. Colorado Regular Cab with Z71 Off-Road suspension, shown in Dark Cherry Red Metallic.



AT LEFT: Colorado Regular Cab with ZQ8 Sport suspension, shown in Yellow.



COLORADO Interior

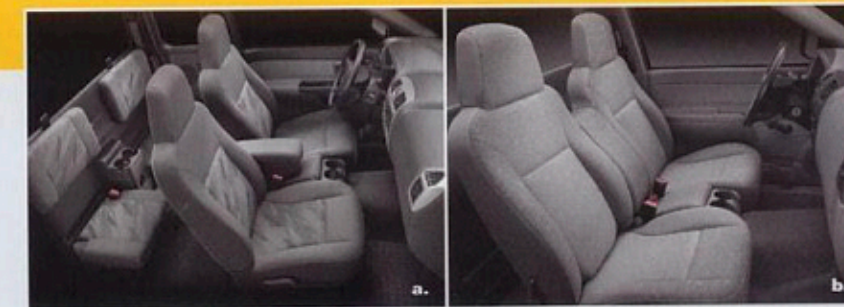
We'll give you a leg up on other mid-size pickups.

We thought there was space in the mid-size category for a bit more room and comfort inside the cab. Enter Colorado – where Chevy's engineering expertise led to the development of spacious cabs that raise the standard for the category. In fact, it doesn't matter whether you choose a Regular, Extended or Crew Cab configuration – each provides more front-seat legroom than Dodge Dakota, Ford Ranger or Toyota Tacoma.* Not that dimensions alone are the defining characteristic of these cabs. The seating is also tremendously supportive and comfortable, particularly if you opt for the front bucket seats, which are standard on Crew Cabs and available on Colorado LS Regular and Extended Cab models. So move up to a larger cab, without moving up to a full-size pickup – with Chevy Colorado.

*Based on GM medium pickup segment and 2003 model year competitive data. Excludes other GM divisions.

BELOW:

- a. Colorado LS Extended Cab, shown in Medium Pewter Deluxe cloth.
- b. Colorado LS Regular Cab, shown in Medium Pewter cloth.



AT LEFT: Colorado LS Crew Cab, shown with available leather-appointed seating in Medium Pewter.



COLORADO Controls

Better informed. Better prepared.

The greater your control of information, the greater your control of your truck. That's the thinking behind Colorado's instrument panel. That's why you'll find a tachometer in the standard analogue gauge cluster. It's just one more piece of information that helps you get the most out of your Colorado. The same can be said of the comprehensive Driver Information Centre. It keeps you up to date on the status of numerous vehicle functions – it even tells you when it's time for an oil change. That enables you to be proactive instead of reactive in your approach to driving. Talk about thinking ahead.

BELOW:

- a. You receive up-to-the-minute status reports on many vehicle functions via the standard Driver Information Centre.* It alerts you to everything from a low fuel level and engine overheating to a turn signal left on inadvertently.
 - *Functions depend on vehicle equipment levels.
- b. The longer the ride, the more time you'll have to enjoy the convenience of the six-disc CD player that's available on LS models.



AT LEFT: Colorado instrument panel, shown with available equipment.

COLORADO

Technology

Check out this resumé.

It's an all-new truck and it's the product of all-new engineering. But Colorado doesn't simply amalgamate the best of Chevy Truck design and manufacturing processes. We also provided plenty of room for our engineers to incorporate their creativity into the design. The results provide proof of their ingenuity. Just consider the larger of the two all-new Vortec engines, with such advanced engineering features as variable exhaust valve timing, four valves per cylinder, dual overhead camshafts, a coil-on-plug ignition system and electronic throttle control. Take that know-how one step further: How do you combine the best of four- and six-cylinder engines? By developing an innovative in-line five-cylinder engine. These are powerful examples of how far creative thinking can take you – with Chevy Colorado.

NEW BOX CHANNEL FRAME

Colorado's strength is largely the product of the all-new box channel frame. It is two and one-half times as rigid as the frame of its predecessor – the 2003 S-10. Cross beams further enhance the frame's stiffness and contribute to Colorado's stable handling.

ENVIRONMENTAL MEASURES

Colorado isn't only easy on gas – there are many ways this truck is also easy on the environment. It is more than 95 percent recyclable. The lighting systems are also free of mercury and cadmium.

BRAKE SENSORS

Monitoring the condition of your brakes is easy. Colorado is equipped with standard audible wear sensors, and a brake fluid level sensor that alerts you if the level falls below the required minimum.

CORROSION PROTECTION

Canada isn't only distinguished by its harsh climate. The use of road salts is also a reality of life in our country. Fortunately, Colorado is engineered with extensive corrosion protection features, including an aluminized stainless steel exhaust system, in addition to the use of two-sided galvanized steel in all exterior body panels except the roof.

INSTA TRAC 4x4

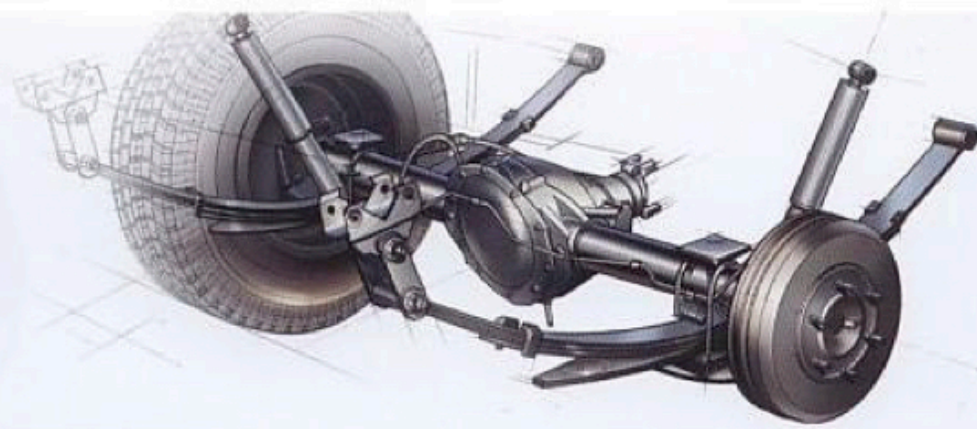
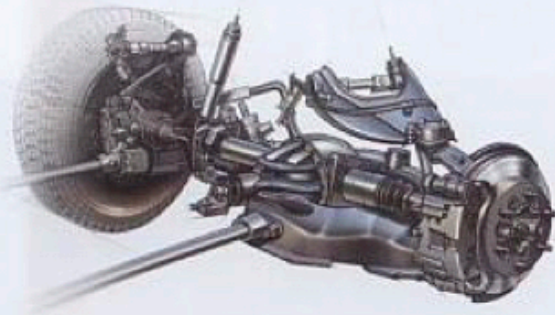
The shift-on-the-fly, two-speed part-time Insta-Trac transfer case is standard on all 4x4 models. It allows you to shift from 2HI to 4HI and back at the touch of a button conveniently located on the instrument panel. It includes a neutral position to permit flat towing.



TRACTION ASSIST

The advantages of traction assist are now available for the first time in a mid-size pickup,* on Colorado 2WD models. Traction assist helps reduce wheel slippage on most slippery surfaces by modulating engine power to the locking differential, which is included.

*Based on GM medium pickup segment and 2003 model year competitive data. Excludes other GM divisions.



COLORADO Suspension

Three times a charm.

The **Z71 Off-Road suspension** is offered on both 2WD and 4x4 models. The system features front torsion bars, gas-charged monotube shocks, stamped A-arms, a tubular front stabilizer bar, as well as firm-riding urethane jounce bumpers. Ground clearance is increased by about 25 mm (1 in.), compared to the Z85 Standard suspension.

The **ZQ8 Sport suspension** lowers the chassis by more than 50 mm (2 in.) compared to the Z85 Standard suspension. The system is only available on 2WD models. It features an independent front suspension with coil springs and stamped A-arms, as well as front and rear stabilizer bars, monotube shocks, special jounce bumpers and a live rear axle with two-stage leaf springs.

A Crew Cab with a Sport suspension? A 2WD pickup with the legendary Z71 Off-Road suspension? Yes, you can say with authority that Colorado is changing the rules for mid-size pickups. With three different suspension packages dedicated to different driving conditions and preferences. Each package has a ride height and suspension components tailored for that specific application, from the road-holding abilities of the lowered ZQ8 Sport suspension to the rugged durability of the raised Z71 Off-Road suspension. And all three suspension packages are available on all three models: Crew Cab, Extended Cab and Regular Cab. That adds up to more choice than ever before. Way more.



ZQ8 Sport suspension (2WD only)



Z85 Standard suspension (2WD and 4x4)



Z71 Off-Road suspension
(2WD and 4x4)

COLORADO

Versatility

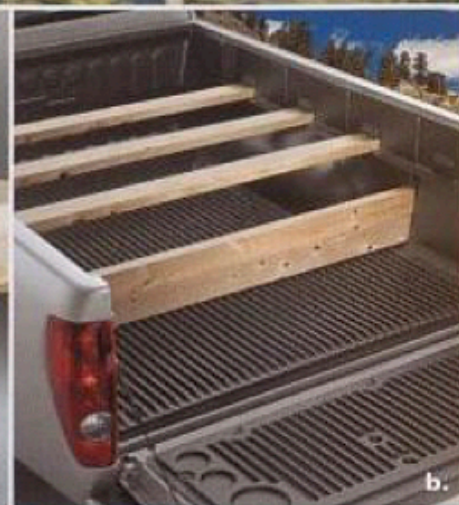
A whole new angle on versatility.

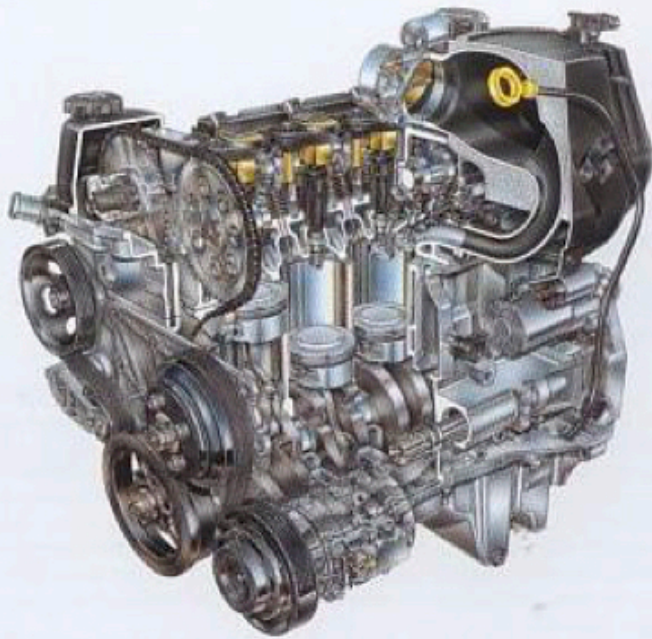
Some of Colorado's innovations required advanced engineering degrees and powerful computers with the latest software. Others relied simply on common sense. Take the idea that you can lock Colorado's tailgate in not one, but two positions. The first is the standard vertical position. The second is what separates this tailgate from everything else in the category – a 52° angle. Its advantage? It can help support longer loads more securely. That's something to keep in mind the next time you go to the lumber yard – or the next time you're looking for a pickup.

INSET PHOTOS:

- a. Colorado's segment-exclusive two-position tailgate.*
- b. Colorado has the deepest cargo bed in its segment,* which contributes to its 1242 L (43.9 cu. ft.) of cargo box volume on Regular and Extended Cab models or 1039 L (36.7 cu. ft.) on Crew Cab. There's also two-tier loading and eight tie-downs in the cargo beds.
- c. Crew Cabs are as adept at handling cargo as they are at welcoming passengers. The 60/40 split-folding rear seat can be folded flat for increased cargo capacity, or it can be divided to accommodate both a passenger and cargo simultaneously.
- d. The Extended Cab is more than spacious – it's also thoughtfully designed, with two handy segment-exclusive* storage compartments under the rear seats – the perfect place to keep small items out of sight and out of the way.

*Based on GM medium pickup segment and 2003 model year competitive data. Excludes other GM divisions.





COLORADO Performance

Power runs in the family.

Features of Colorado's Vortec engines:

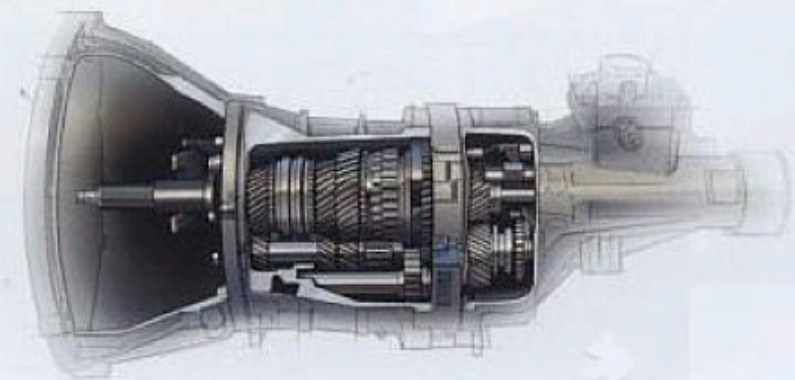
- Dual overhead camshafts control two intake and exhaust valves per cylinder, adding to the engines' exceptional power output.
- Long-life features extend service intervals, from the platinum-tipped spark plugs that are designed to last 166,000 km (100,000 mi.) before they need to be replaced, to the DEX-Cool engine coolant which has a change interval of 240,000 km (150,000 mi.).*
- Lightweight pistons enhance the ability to generate greater power from a smaller displacement.
- A broad torque curve translates into excellent responsiveness at nearly any speed.
- Variable exhaust valve timing increases both power output and efficiency.
- The use of airplane grade A356 aluminum in the engine block and head helps these engines achieve tremendous strength, while reducing weight.
- Performance is continuously monitored and optimized by the Powertrain Control Module (PCM).
- Electronic Throttle Control increases the accuracy of the acceleration response.
- Dual balance shafts counteract engine vibration, ensuring smooth and quiet operation.

*Maintenance needs vary with different uses and driving conditions. Please refer to the Owner's Manual for more information.

RIGHT: An all-new truck – and an all-new transmission. The new five-speed manual incorporates triple-cone synchronizers, which contribute to the transmission's precise shifting and impressive durability. The five-speed manual gearbox is standard on all Regular and Extended Cab models, as well as Crew Cab models with Z85 Standard suspension.

Vortec is the name that's known for its combination of power, efficiency and durability. And now there are two additions to the family that are sure not only to reinforce, but strengthen that reputation. The all-new Vortec 2800 in-line four-cylinder and Vortec 3500 in-line five-cylinder engines are based on the acclaimed Vortec 4200 in-line six-cylinder engine that was named one of the world's ten best engines by Ward's AutoWorld in 2002 and 2003. The two new engines share 75 percent of their parts with the Vortec 4200. They also share a rigid in-line configuration that reduces noise and vibration and ensures smooth performance across their operating range. The Vortec 2800 develops more horsepower and torque than any four-cylinder engine in its segment.* And the Vortec 3500 outpowers all the V6s in the mid-size pickup segment* – with only five cylinders. Both engines also deliver exceptional fuel efficiency. Two new Vortec engines – headed straight to the top of their class.

*Based on GM medium pickup segment and 2003 model year competitive data. Excludes other GM divisions.



Safety

An intelligent approach to safety.

You can't look at safety as an issue in isolation from the rest of a vehicle's design. In Colorado, safety is an integral factor – it affected the design of hundreds of components and systems. Nothing demonstrates this integrated approach to safety better than Colorado's intelligent dual-stage air bag system.* It integrates the air bags* into the overall safety system. If an air bag is deployed, the courtesy lights are turned on, and if equipped with power door locks, they automatically unlock after a brief delay, in order to enable easier rescue. Colorado is also the first mid-size pickup to offer available head-curtain side-impact air bags designed to help protect all outboard seating position occupants.† So you can see that Colorado is as complete in its approach to safety as it is in every other aspect of its engineering.

*Remember, always wear your safety belt, even with air bags.

A NOTE ABOUT CHILD SAFETY: Children generally are safer if they are secured in a rear seat using the appropriate child safety seats and restraints, which is why General Motors recommends that child safety seats be properly secured in a vehicle's rear seat. Never place a rear-facing infant restraint in the front seat of any vehicle equipped with an active air bag. See the Owner's Manual and child safety seat instructions for more safety information.

†Based on GM medium pickup segment and 2003 model year competitive data. Excludes other GM divisions.



You can count on Chevy Trucks to see you through. With OnStar safety and security on board, you'll also have a helping hand wherever your journey takes you. A simple touch of the blue OnStar button inside your vehicle connects you with an OnStar Centre,* where you'll find the friendly voice of one of our Advisors ready to assist you 24 hours a day, 365 days a year. We're there for you whenever you need us. In an emergency, OnStar Advisors can contact a nearby emergency service provider with your location and request help. And if your vehicle breaks down, we can direct Roadside Assistance to your location.

Experience the invaluable peace of mind that OnStar provides, and join the ranks of the members across Canada and the United States who OnStar helps every month, handling more than 220,000 routing calls, 25,000 remote door unlocks, 13,000 roadside assistance requests, 6000 emergency calls and close to 600 air bag deployments.

OnStar also offers the convenience and safety of Personal Calling.** If you've ever used a cellphone to make calls while driving, you know how challenging it can be. OnStar Personal Calling provides you and your family with a safer alternative that's totally integrated into your vehicle. With the touch of a button, you can make and receive hands-free, voice-activated calls from inside your vehicle just in case your hand-held cellular phone is lost, forgotten, or has a low battery. You simply purchase the minutes you want, when you want them. Best of all, OnStar Personal Calling has no additional long distance or roaming charges.

OnStar is ready to serve you with three plans that offer a range of services to meet your individual needs. OnStar, plus one year of the Safe & Sound Plan, is available on Colorado LS models. Other OnStar service plans offer driving directions, and a wide array of information and convenience services. See your dealer for more details about all the plans available for your Chevy Colorado.

OnStar. Always there. Always ready.

*Subscription Agreement necessary. Service contract required. OnStar services require vehicle electrical system and analogue wireless service to be available and operating for features to function properly. OnStar uses existing emergency service providers as well as wireless and satellite technologies and is subject to their limitations.

**Requires OnStar Personal Calling-enabled vehicle, existing OnStar service contract and prepaid calling minutes. OnStar voice recognition system may not recognize all voices. Available in most markets. Call 1-888-4-ONSTAR (1-888-466-7827), ask your dealer, or visit onstarcanada.com for further details.



Colorado's fully integrated air bag* system.



Available head-curtain side-impact air bags.



Now put your own stamp on it.

Chevy Colorado is the vehicle that's built specifically to support and reflect your way of life. Now you can make your Colorado even more a part of you. By choosing GM Accessories specially designed to complement Colorado – adding dimensions of styling and functionality. And GM Accessories are integrated into the process of designing your vehicle, providing unmatched fit, finish and functionality. They are also the only accessories backed by GM's 3-year/60,000 km TOTAL™ Warranty, when permanently installed by the dealer at the time you purchase or lease your new vehicle. And they can be included in your new-vehicle lease or financing through GMAC. So give your Colorado even more personality – by giving it more of your own.

ABOVE: Colorado Crew Cab, shown with the following dealer-installed accessories: Chrome tubular side steps, moulded hood protector, ventvisors and splash guards.

BELOW:

- a. These moulded assist steps provide easier access to the cab.
- b. Protect your cargo with this stylish locking and folding hard tonneau cover.
- c. Splash guards look sharp and protect your Colorado's finish from gravel and small road debris.
- d. Turn your Colorado into a home away from home with this durable nylon sport tent.



COLORADO Standard and Optional Features

	Z85 Base/LS	Z71 Base/LS	ZQ8 Base/LS
Safety and Security			
Air bags – driver and front-passenger, frontal. Includes passenger-side on/off switch in Reg. and Ext. Cabs	S/S	S/S	S/S
Air bags – driver, front-passenger and rear-seat outboard passengers, head-curtain	O/O	O/O	O/O
Headlights – dual composite halogen, Daytime Running Lights with automatic light control and flash-to-pass	S/S	S/S	S/S
Door locks – power, programmable (standard in up-level Crew Cab)	O/O	O/O	O/O
Door locks – rear door, child-security (Crew Cab)	-/S	-/S	-/S
Keyless entry system – remote (standard in up-level Crew Cab)	-/O	-/O	-/O
OnStar In-Vehicle Communications and Assistance Service – includes one-year Safe & Sound Plan and electrochromic self-dimming interior rear-view mirror	-/O	-/O	-/O
Safety belts – driver and front-passenger, outboard 3-point and adjustable centre lap belt with bench seat	S/S	S/S	S/S
Safety restraints – LATCH (Lower Anchors and top Tethers for Children), 3 positions of Crew Cab rear seat	S/S	S/S	S/S
Side-guard door beams	S/S	S/S	S/S
Theft-deterrent system – content alarm, audible/visible	S/S	S/S	S/S
Security system – PASSLock	S/S	S/S	S/S
Traction Assist – electronic, includes locking rear differential (2WD only)	O/O	O/O	O/O
Mechanical			
Battery – with run-down protection	S/S	S/S	S/S
Brakes – front disc/rear drum with 4-wheel anti-lock braking system (ABS)	S/S	S/S	S/S
Engine – Vortec 2800 in-line 4-cylinder Horsepower – 175 @ 5600 rpm, Torque – 185 lb.-ft. @ 2800 rpm	S/S	S/S	S/S
Engine – Vortec 3500 in-line 5-cylinder Horsepower – 220 @ 5600 rpm, Torque – 225 lb.-ft. @ 2800 rpm			
– Reg. and Ext. Cab	O/O	O/O	O/O
– Crew Cab	-/O	-/S	-/S
Engine block heater	S/S	S/S	S/S
Locking differential – rear			
– Reg. and Ext. Cab	O/O	S/S	O/O
– Crew Cab	-/O	-/S	-/O
– Crew Cab (up-level)	-/S	-/S	-/S
Steering – power, rack-and-pinion	S/S	S/S	S/S
Suspension, Z85 Standard – includes independent front with coil springs on 2WD models and torsion bar front suspension on 4x4 models. Both feature a 28 mm front stabilizer bar, rubber jounce bumpers and twin tube shock absorbers	S/S	-/-	-/-
Suspension, Z71 Off-Road – includes torsion bar front suspension on both 2WD and 4x4 models, 28 mm front stabilizer bar, urethane jounce bumpers and monotube shock absorbers. Additional 25 mm ride height over Z85 Standard suspension for improved ground clearance	-/-	S/S	-/-
Suspension, ZQ8 Sport – includes independent front with coil springs, 28 mm front stabilizer bar, 22 mm rear stabilizer bar, special jounce bumpers and monotube shock absorbers. Sport ride and 50 mm lower ride height than Z85 Standard suspension for improved road handling (2WD only)	-/-	-/-	S/S
Suspension, rear – two-stage multi-leaf springs and solid live axle	S/S	S/S	S/S
Transmission – 5-speed manual with overdrive			
– Reg. and Ext. Cab	S/S	S/S	S/S
– Crew Cab	-/S	-/-	-/-
Transmission – 4-speed automatic with overdrive			
– Reg. and Ext. Cab	O/O	O/O	O/O
– Crew Cab	-/O	-/S	-/S
Transfer case – 2-speed, part-time Insta-Trac, with dash-mounted electronic controls (4x4 models)	S/S	S/S	-/-
Trailer special equipment – Hitch receiver and wiring harness ¹	O/O	O/O	O/O

¹Standard with available Vortec 3500 in-line 5-cylinder.

	Z85 Base/LS	Z71 Base/LS	ZQ8 Base/LS
Exterior			
Bed extender – brushed aluminum ¹			
– Reg. and Ext. Cab	O/O	O/O	O/O
– Crew Cab	-/O	-/O	-/O
– Crew Cab (up-level)	-/S	-/S	-/S
Bedliner – moulded plastic ¹	O/O	O/O	O/O
Bed rails – chrome (NA with bed rail protectors or tonneau) ²	O/O	O/O	O/O
Bed rail protectors – moulded (NA with bed rails or tonneau) ²	O/O	O/O	O/O
Bumpers – front and rear, chrome or powder gray with rear step pad	S/S	S/S	-/-
Bumpers – front and rear, colour-keyed with rear step pad	-/-	-/-	S/S
Colour-keyed Appearance Package – includes grille surround and centre bar, front and rear bumpers and wheel flares	O/O	-/-	S/S
Fog lights – front, halogen	O/O	S/S	S/S
Glass – Solar-Ray, tinted	S/S	S/S	S/S
Glass – deep-tinted, all windows behind front doors	O/S	O/S	O/S
Grille – dark smoke gray surround and inner mesh with chrome centre bar	S/-	S/S	-/-
Grille – colour-keyed surround with dark smoke gray inner mesh and chrome centre bar	-/S	-/-	-/-
Grille – colour-keyed surround and centre bar with dark smoke gray inner mesh	-/-	-/-	S/S
Hood protector – moulded plastic (smoke, gray, white, red, blue, silver) ¹	O/O	O/O	O/O
Mirrors – folding, manual adjustment	S/S	S/S	S/S
Mouldings – bodyside, dark smoke gray ¹			
– Reg. and Ext. Cab	O/O	O/S	-/-
– Crew Cab	-/O	-/S	-/-
Pickup box – Fleetside, double wall welded steel with 8 cargo tie-downs	S/S	S/S	S/S
Side steps – assist steps ¹	O/O	O/O	O/O
Side steps – tubular side steps (chrome, gray or natural brushed aluminum) ¹	O/O	O/O	O/O
Side steps – tubular side steps, chrome ²			
– Crew Cab (up-level)	-/O	-/S	-/O
Skid plate package – includes splash shield protecting front underbody, oil pan and differential case, skid plate protecting transfer case (4x4 models)	-/O	S/S	-/-
Spare tire – compact, winch-mounted under rear frame	S/S	-/-	S/S
Spare tire – full-size, winch-mounted under rear frame	O/O	S/S	-/-
Splash guards – moulded, dark smoke gray ¹	O/O	S/S	O/O
Sport tent ¹	O/O	O/O	O/O
Sport tent air mattress ¹	O/O	O/O	O/O
Tailgate – 2-position, locking	S/S	S/S	S/S
Tailgate edge protector – moulded ¹	O/O	O/O	O/O
Tires – P205/75R15 all-season (2WD)	S/-	-/-	-/-
Tires – P225/75R15 all-season (2WD)	O/S	-/-	-/-
Tires – P235/75R15 all-season (4x4)	S/S	-/-	-/-
Tires – P265/75R15 all-season	-/-	S/S	-/-
Tires – P235/50R17 all-season	-/-	-/-	S/S
Tonneau cover – hard, folding (NA with bed rail protector or bed rails) ¹	O/O	O/O	O/O
Tonneau cover – soft (NA with bed rail protector or bed rails) ¹	O/O	O/O	O/O
Tow hooks – 2, front	O/O	S/S	-/-
Ventvisors – moulded plastic, smoke ¹	O/O	O/O	O/O
Wheels – 15" x 6" steel	S/-	-/-	-/-
Wheels – 15" x 6.5" aluminum, steel spare	-/S	-/-	-/-
Wheels – 15" x 7" aluminum, steel spare	-/-	S/S	-/-
Wheels – 17" x 8" aluminum, steel spare	-/-	-/-	S/S

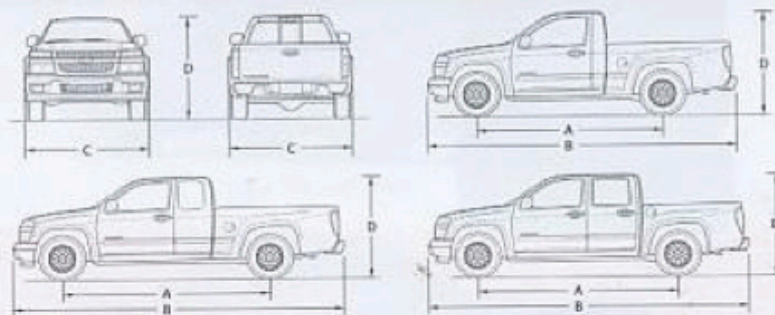
¹Dealer installed accessory. ²Not available with Colour-keyed Appearance Package.

Exterior	Z85 Base/LS	Z71 Base/LS	ZQ8 Base/LS
Wheel flares – dark smoke gray (4x4 models and 2WD with Z71)	S/S	S/S	-/-
Window – rear, sliding	O/O	O/O	O/O
Windshield wipers – variable intermittent wipers	S/S	S/S	S/S
Interior	Z85 Base/LS	Z71 Base/LS	ZQ8 Base/LS
Accents – titanium coloured air outlets, centre stack, door handle bezels and instrument cluster bezels	-/S	-/S	-/S
Air conditioning – manual climate control	O/S	O/S	O/S
Assist handles – front passenger-side, outboard rear seats in Crew Cab	-/S	-/S	-/S
Console – front centre floor, includes centre storage tray, dual cupholders and rear-hinged storage compartment in Crew Cab	-/S	-/S	-/S
Comfort Convenience Package – includes Tilt-Wheel adjustable steering column and cruise control	O/S	O/S	O/S
Door trim – driver and passenger-side feature integral armrest and map pockets	S/S	S/S	S/S
Floor covering – vinyl (Reg. Cab)	S/-	S/-	S/-
Floor covering – colour-keyed carpet with rubber floor mats			
– Reg. Cab	O/S	O/S	O/S
– Ext. and Crew Cab	S/S	S/S	S/S
Floor covering – moulded carpet floor mats ¹	O/O	O/O	O/O
Instrumentation – analogue, includes speedometer, tachometer, odometer, trip odometer, engine temperature and fuel level	S/S	S/S	S/S
Lights – include overhead dome, sidewall entry/exit and exterior cargo	S/S	S/S	S/S
Mirror – day/night adjustable with door activated dual reading lights	S/S	S/S	S/S
Mirror – electrochromic auto-dimming with dual reading lights, compass and outside temperature display	-/O	-/O	-/-
Power convenience package – includes power windows, exterior mirrors, remote keyless entry and programmable power door locks			
– Reg., Ext. and Crew Cab	-/O	-/O	-/O
– Crew Cab (up-level)	-/S	-/S	-/S
Power outlets – 2 auxiliary plus lighter receptacle	S/S	S/S	S/S
Steering wheel – 4-spoke, deluxe	S/S	-/-	-/-
Steering wheel – leather-wrapped	-/-	S/S	S/S
Sunshades – LH and RH padded with passenger-side vanity mirror	S/S	S/S	S/S
Seats	Z85 Base/LS	Z71 Base/LS	ZQ8 Base/LS
Front 60/40 cloth split bench, manual reclining, outboard head restraints, armrests with integral storage and dual cupholders (Reg. and Ext. Cab)	S/-	S/-	S/-
Same as above, except with Deluxe cloth			
– Reg. and Ext. Cab	-/S	-/S	-/S
– Crew Cab (deletes centre floor console)	-/O	-/O	-/O
Front reclining high-back bucket seats with Deluxe cloth, centre floor console with storage, cupholders and armrest			
– Reg. and Ext. Cab	-/O	-/O	-/O
– Crew Cab	-/S	-/S	-/S
Front reclining high-back leather-appointed bucket seats, heated, driver and front passenger-side power seat adjusters and centre floor console with storage, armrest and dual cupholders (up-level Crew Cab)	-/O	-/O	-/O
Rear fold-up jump seats, forward-facing with under-seat storage compartment (Ext. Cab)	S/S	S/S	S/S
Rear seat delete (Ext. Cab)	O/-	O/-	O/-
Rear 60/40 split-back, flat-folding seats (Crew Cab)	-/S	-/S	-/S

¹ Dealer installed accessory. ² Not available with Colour-keyed Appearance Package

Sound Systems	Z85 Base/LS	Z71 Base/LS	ZQ8 Base/LS
Electronically tuned AM/FM stereo with seek/scan, digital clock and 4 speakers (Reg. and Ext. Cab)	S/-	S/-	S/-
Electronically tuned AM/FM stereo with CD player, seek/scan, Radio Data System (RDS), auto tone control, TheftLock, speed-compensated volume control, digital clock and 4 speakers (Base)/6 speakers (LS)	O/S	O/S	O/S
Electronically tuned AM/FM stereo with 6-disc CD changer, seek/scan, Radio Data System (RDS), auto tone control, speed-compensated volume, digital clock and 6 speakers	-/O	-/O	-/O

Dimensions



Exterior, mm (in.)

	Regular Cab	Extended Cab	Crew Cab
Wheelbase (A)	2824 (111.2)	3200 (126.0)	3200 (126.0)
Length (B)	4897 (192.8)	5260 (207.1)	5260 (207.1)
Width (C)	1717 (67.6)	1717 (67.6)	1742 (68.6)
Height (D) ¹			
2WD	1648 (64.9)	1648 (64.9)	1656 (65.2)
4x4	1717 (67.6)	1717 (67.6)	1725 (67.9)

Interior, mm (in.) front/rear

Headroom	1006/- (39.6/-)	1006/963 (39.6/37.9)	1006/973 (39.6/38.3)
Legroom	1118/- (44.0/-)	1118/587 (44.0/23.1)	1118/894 (44.0/34.8)
Shoulder room	1450/- (57.1/-)	1450/1453 (57.1/57.2)	1450/1450 (57.1/57.1)
Hip room	1354/- (53.3/-)	1354/1463 (53.3/57.6)	1354/1344 (53.3/52.9)

Cargo Box Dimensions, mm (in.)

Length	1849 (72.8)	1849 (72.8)	1552 (61.1)
Inside width @ wheelhousing	1082 (42.6)	1082 (42.6)	1082 (42.6)
Inside height	472 (18.6)	472 (18.6)	472 (18.6)

Capacities

GVWR, max. kg (lb.)	2336 (5150)	2404 (5300)	2404 (5300)
Payload, max. kg (lb.)*	786 (1733)	750 (1654)	679 (1498)
Towing, max. kg (lb.)**	1814 (4000)	1814 (4000)	1814 (4000)
Fuel L (Imp. gal.)	72 (15.8)	72 (15.8)	72 (15.8)

¹Add 25 mm (1.0 in.) in height to Z71 models. Subtract 50 mm (2.0 in.) in height for ZQ8 models.

*Payload includes passengers**, equipment and cargo. Payloads are approximate and will change with the addition of optional or aftermarket equipment. Consult your dealer or equipment supplier for details.

**Trailer ratings are calculated using an automatic transmission, Vortec 3500 engine and assuming only the driver is in the tow vehicle. Trailer Weight (also called Trailer Towing Capacity) is the weight of a trailer, its load or contents plus any other weight added to the tow vehicle. Ratings shown are for ball hitch applications. For details, ask your sales consultant for a copy of the Trailering with Chevy Trucks brochure. Many trailer towing applications require additional optional equipment.

Interior Trims

FABRICS AND SEATS

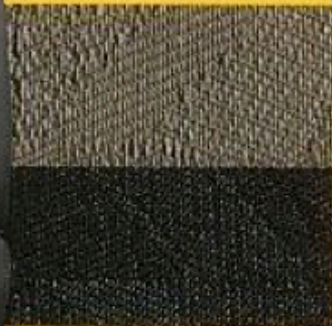
All interior fabric colours are available with any solid exterior colour.



Medium Pewter Cloth, standard in Base Regular and Extended Cab models.



Deluxe Cloth, standard in LS models. Shown in Sport Pewter.



Medium Pewter

Very Dark Pewter



Medium Pewter leather-appointed seating, available in up-level Crew Cabs.



Very Dark Pewter

Wheels



15" x 6" steel wheel, painted gray. Standard on Base models with Z85 Standard suspension.



15" x 6.5" aluminum wheel. Standard on LS models with Z85 Standard suspension.



15" x 7" aluminum wheel. Standard on Base and LS models with Z71 Off-Road suspension.



17" x 8" aluminum wheel. Standard on Base and LS models with Z08 Sport suspension.

Exterior Colours



39 – Indigo Blue



59 – Silver Birch Metallic



41 – Black



74 – Victory Red



43 – Yellow*



85 – Sunset Orange Metallic



47 – Dark Green Metallic



94 – Dark Cherry Red Metallic



50 – Summit White

Colours may not be exactly as illustrated due to restrictions of the printing process. Please see your sales consultant for specific colour and model availability.

*Premium colour – additional charge.

A WORD ABOUT THIS BROCHURE

Some of the equipment shown or described throughout this brochure may be available at extra cost. This brochure is based on the latest information at the time of printing. General Motors of Canada Limited reserves the right to make changes at any time, without notice, to specifications, equipment, colours, models, availability, programs and services. Your Chevy dealer is the best source for up-to-date information. General Motors of Canada Limited reserves the right to lengthen or shorten the model year for any product, for any reason or to start and end model years at different times.

A WORD ABOUT ASSEMBLY

Chevys are equipped with engines and components produced and assembled by different operating units of General Motors, its subsidiaries and suppliers and these engines and components may change or be obtained from different sources from time to time. All such engines and components are approved for use in Chevys. Certain equipment ordered may be unavailable at the time of assembly and we suggest that you verify that your vehicle includes the equipment you ordered or if there are changes, that they are acceptable to you.

General Motors, GM, the GM emblem, the GM Canada Web site address, the GM Accessories logo, Chevrolet, Chevy, the Chevrolet emblem, Astro, Astrovan, Avalanche, Blazer, Colorado, Crew Cab, DEX-COOL, Duron, Express, PASSLOCK, S-10, Silverado, Silverado, Solar-Ray, Suburban, Tahoe, Tire-Well, the TOTAL Warranty, Tracker, TrailBlazer, Vortec and Z71 are all trade marks of the General Motors Corporation and/or General Motors of Canada Limited.

GMAC is a registered trademark of the General Motors Acceptance Corporation. OnStar, the OnStar logo and the OnStar button are registered trademarks of the OnStar Corporation.

TheftLock is a registered trademark of Delphi Automotive Systems.

HomeLink is a registered trademark of the Prince Corporation.

Radio Data System (RDS) is a trademark of the U.S. National Association of Broadcasters.

Printed in Canada, October 2003.

© Copyright 2003 General Motors of Canada Limited

WHAT CAN YOU EXPECT FROM A CHEVROLET TRUCK? AS THE MOST DEPENDABLE, LONGEST-LASTING TRUCKS ON THE ROAD,* CHEVY TRUCKS ARE BUILT TO BE STRONG, CAPABLE, COMFORTABLE AND DURABLE. THE ONLY QUESTION IS: WHICH CHEVY TRUCK ANSWERS YOUR NEEDS THE BEST?

*Dependability based on longevity: 1992-July 2002 full-line light-duty truck company registrations. Excludes other GM divisions.

Commitment

ROCK-SOLID TRUCKS. BACKED BY A ROCK-SOLID COMMITMENT. There is nothing halfway about Chevrolet's approach to building strong and durable trucks. That can also be said of the way Chevrolet backs each and every truck that bears its name. A comprehensive series of support programs makes it easier to purchase or lease a Chevy Truck and help protect you and your vehicle down the road. A powerful example of the level of protection you can expect is the GM TOTAL™ Warranty. It is so thorough, it covers your vehicle from the roof right down to the tires. So when you drive off the lot of your Chevrolet dealership, you can do so with total confidence.

Peace of mind is knowing that your vehicle is built for the long haul, and is backed by a comprehensive warranty.

THE GM TOTAL™ WARRANTY:

The GM TOTAL™ Warranty is your promise of total warranty protection. It covers every new Chevy Colorado for 3 years or 60,000 km.* Complete vehicle repairs are covered,** including parts and labour, with no deductible. The warranty also includes:

- 3-year/60,000 km* complete vehicle repair coverage
- 6-year/160,000 km* corrosion perforation coverage
- 8-year/130,000 km* coverage on catalytic converters and powertrain control modules (PCMs).

*Whichever comes first.

**To correct any defects in material or workmanship occurring during the warranty period. Regular maintenance is not included, nor is excessive wear and tear caused by reckless or negligent driving.

OTHER OWNERSHIP PRIVILEGES AND PROGRAMS:

- **Roadside Assistance** – 24/7 service via toll-free number during your warranty period, anywhere in Canada or the United States
- **Courtesy Transportation** – may be offered during warranty period
- **GM Protection Plan (GMPP)** – the only extended service contract backed by the resources and commitment of General Motors. GMPP may be purchased at the time of your sale or lease, or subsequently
- **GM Mobility Program** – you may be eligible for reimbursement of up to \$1000 (taxes included) for adaptive equipment for your GM vehicle
- **GM Accessories** – personalize your vehicle with GM Accessories, specifically engineered for your new GM vehicle
- **GM Goodwrench Service** – with GM-certified technicians and GM-approved parts, nobody knows your GM vehicle better.

TO HELP YOU PURCHASE OR LEASE A CHEVROLET:

- **GMAC financing** – on-the-spot financing at your GM dealership
- **GMAC SMARTLEASE** – a smart alternative to traditional financing
- **GM Graduate Program** – recent graduates may qualify for up to \$1000 (taxes included) off any new GM vehicle¹
- **The GM Card** – eligible cardholders may be able to redeem up to \$3500 in GM Card® Earnings towards the total purchase price or lease down payment on selected vehicles.¹

INFORMATION RESOURCES:

You can find more information about these programs from your GM dealer, or at these information centres:

- The GM Web site at gmcanada.com
- The GM Customer Communication Marketing Centre at 1-800-GM-DRIVE (1-800-463-7483 or 1-800-263-3830 for TDD users) – for information about any GM product or service, including The GM Card and the GM Mobility Program
- For information about GMAC visit the GM Web site or call 1-800-616-4622

¹Conditions and limitations apply.

COLORADO

SILVERADO

AVALANCHE

SSR

TRACKER

BLAZER

TRAILBLAZER

TAHOE

SUBURBAN

ASTRO

EXPRESS



122-04-B-001E



CHEVY TRUCKS

Wilson Chevrolet Oldsmobile Ltd.
At the Bridge On the Strip
(705)647-4373 (705)647-5050
1-800-613-7697