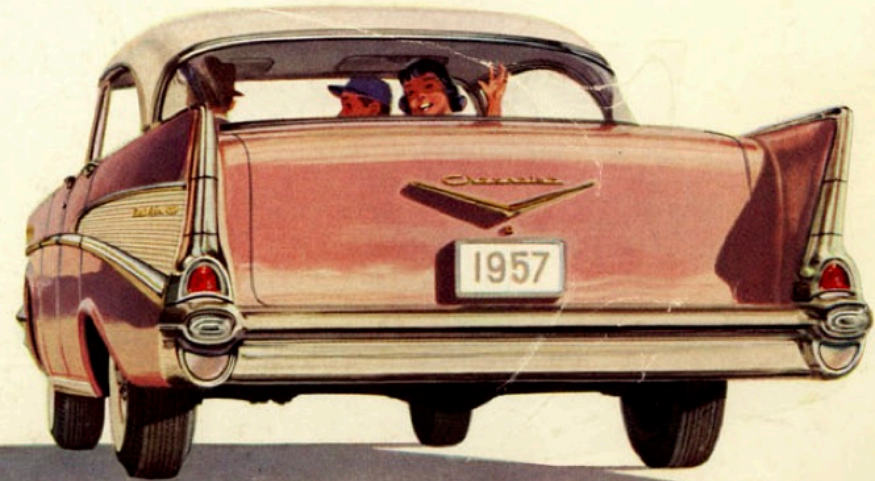
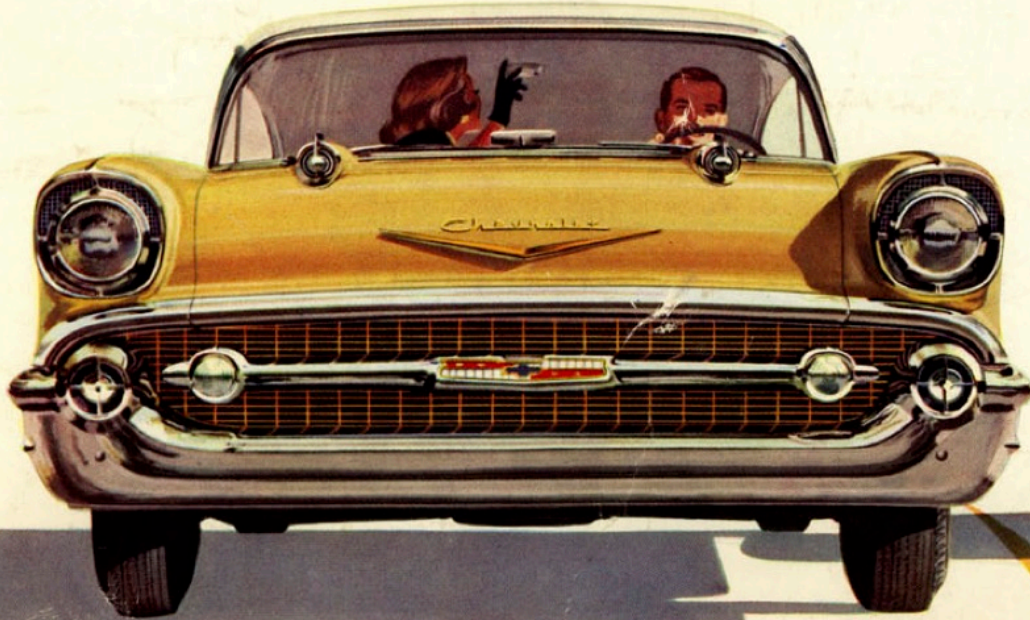


CHEVROLET

1957



SWEET, SMOOTH and SASSY



GOING PLACES IN A GLAMOROUS NEW WAY

The '57 Chevy goes 'em all one better—with exciting **new** looks . . . zippy **new** power . . . luxurious **new** interiors . . . revolutionary **new** Turboglide, the newest, smoothest thing in automatic drives and famous Powerglide, proved by billions of miles. These are among the many advances that mark Chevrolet the importantly **new** car in its field!

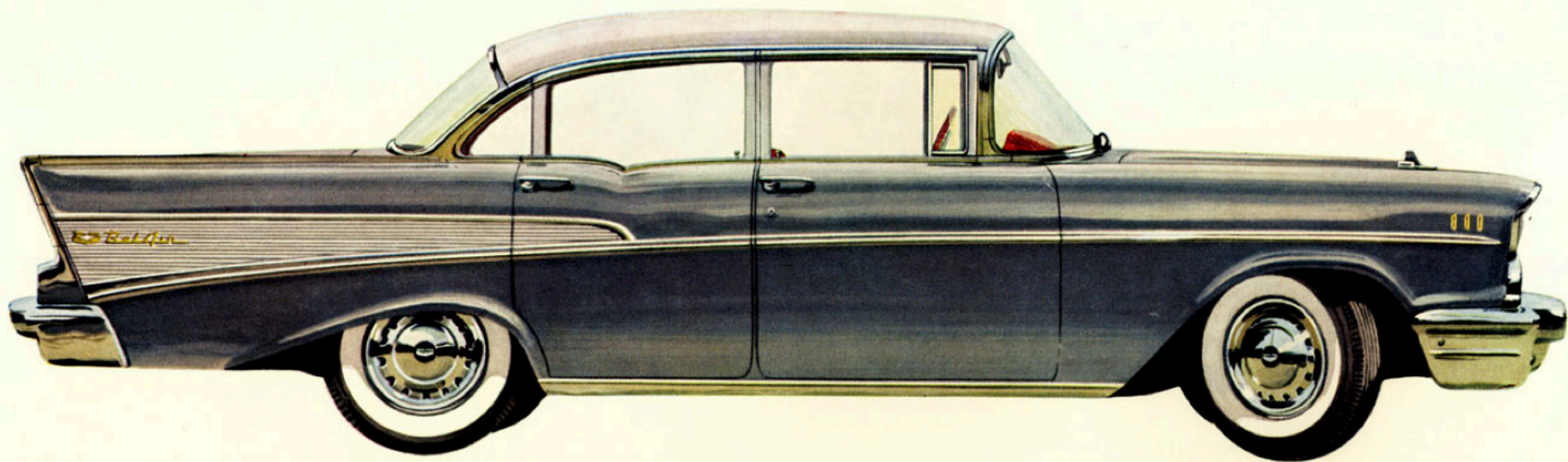
There are twenty stunning models (including a more powerful Corvette) . . . three great series—Bel Air, "Two-Ten" and "One-Fifty" . . . **new** exterior styling, from **new** front grille to **new** high-set rear fenders . . . **new** high-fashion colors . . . choice of V8 or Six, with **new** engines delivering high-compression horsepower! There are **new** luxury-size tires and wheels, and a **new**, smoother ride . . . a **new** view for safer driving . . . **new** instrument panel . . . and a **new** wider choice of power teams!

But that's not all! Now, for the first time, Chevrolet announces fuel injection! This major engineering development entirely eliminates the carburetor. It means you'll experience more useable engine power . . . performance more instantly responsive than ever before! And there are still other new features for '57, all adding up to a great **new** feel at the wheel—with **new** performance, economy and smoothness for greater motoring pleasure in your '57 Chevrolet!



the **BEL AIR** *4-door sedan*

SHOWN IN IMPERIAL IVORY AND INCA SILVER



Each of this trio of roomy sedans has its own new look of distinction and individual two-tone interiors. Note the high-fashion appeal of this sedan above with its gold-anodized aluminum fender louvers, full-disc wheel covers and rakish sweep of chrome. Here is styling elegance comparable to the costliest cars in all but price! In all models, even the driver's view is new—up to 75 square inches more glass area.

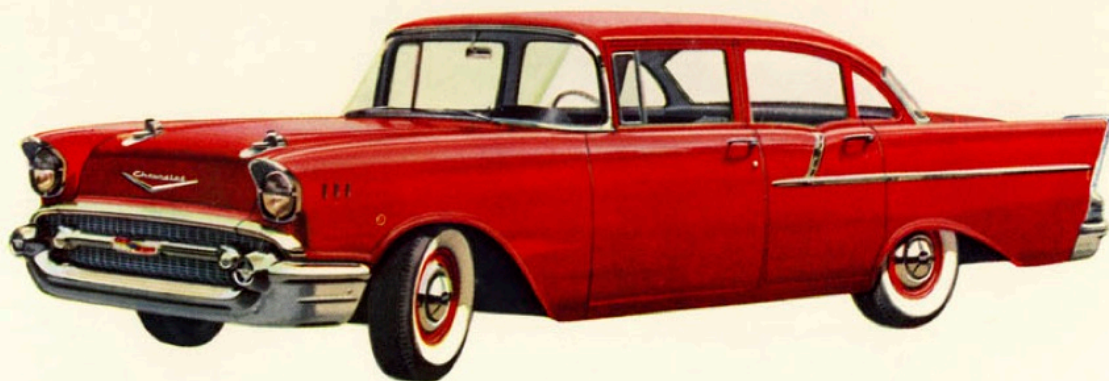


BEL AIR 4-DOOR Interior

Here is fabric and color to delight the eye. Flecks of red nylon add highlights to black Jacquard-loomed cloth. Supple vinyls have the sheen of grain and patent leathers. All models offer interior styling smartly color-matched to the exterior color of your choice.

the **"ONE-FIFTY"** 4-door sedan

SHOWN IN MATADOR RED

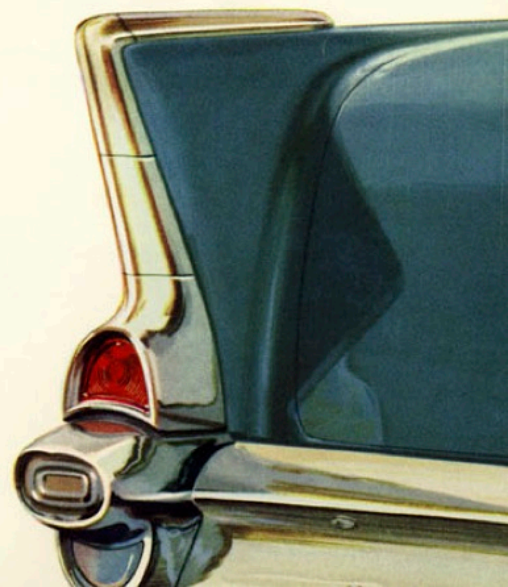


the **"TWO-TEN"** 4-door sedan

SHOWN IN SURF GREEN AND HIGHLAND GREEN

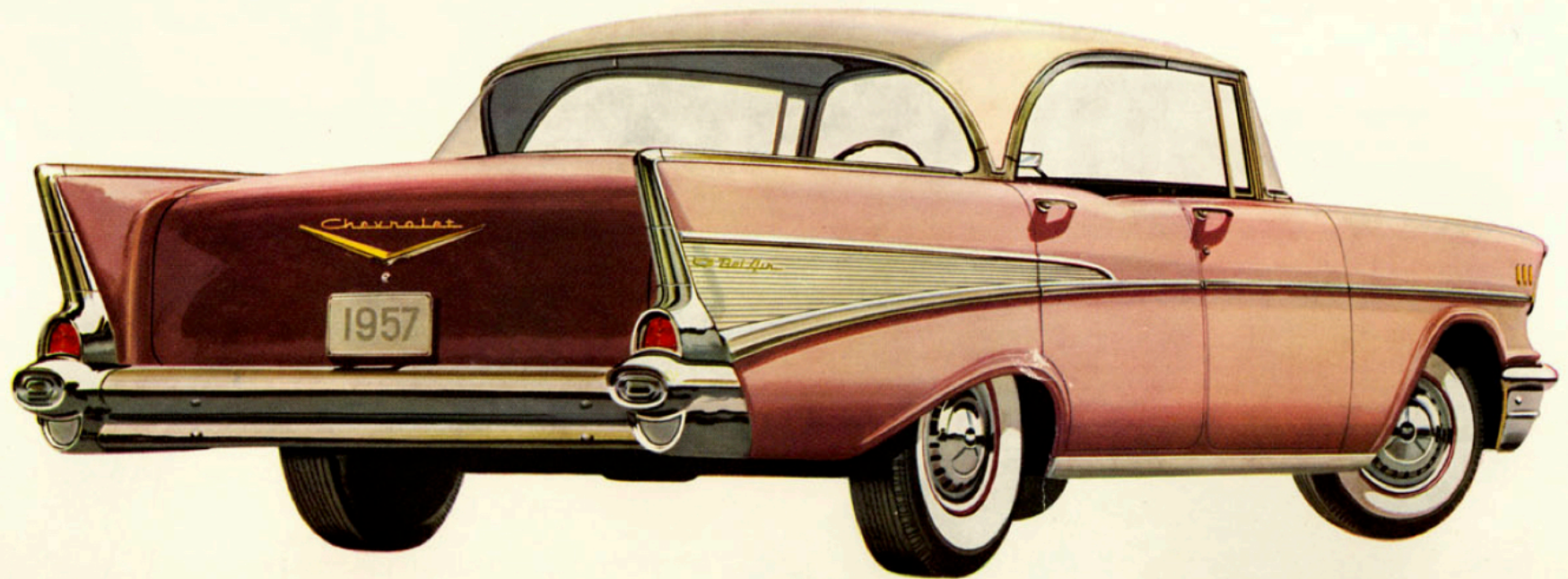


High fashion can be functional, too! Chevrolet's rakish new high-set rear fender sweeps down to form a unit combining tail, stop and directional signal lights, bumper guard, and space for accessory backup lights. A panel in the left fender molding swings aside to reveal the fuel filler cap!

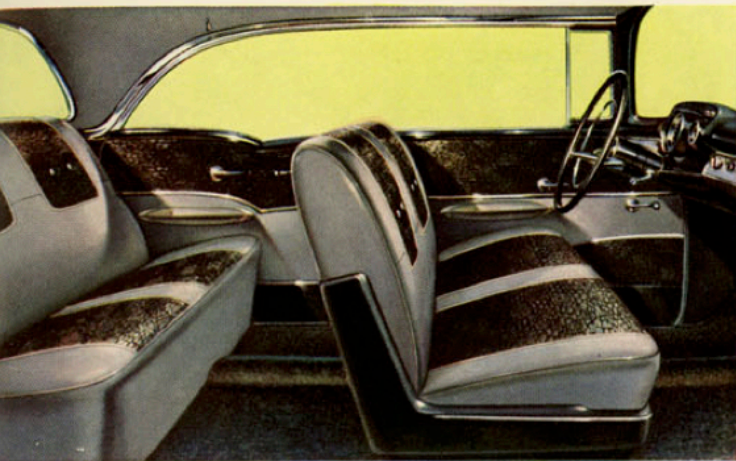


the **BEL AIR** sport sedan

SHOWN IN IMPERIAL IVORY AND DUSK PEARL



You're headed for wide-open pleasure in this spirited new hardtop—just one of eight lively, lovely sport models. All reflect Chevrolet's dashing new styling. All are alive with new colors and accents of gold or chrome. All offer new comfort and luxurious interiors. No wonder the '57 Chevrolet is such fun to go in, so glamorous to be seen in!

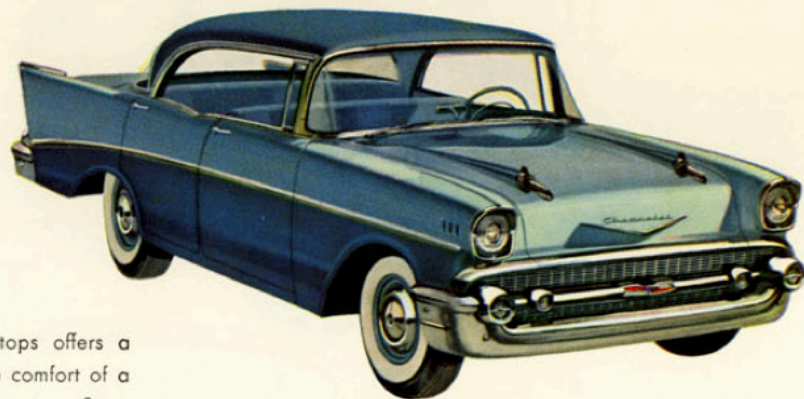


BEL AIR SPORT SEDAN Interior

This belle of the Chevrolet hardtops offers a blending of open-air dash with the comfort of a closed 4-door sedan. This Bel Air interior reflects contemporary styling in new slenderly crafted seats and smart combinations of Jacquard-loomed pattern cloth and vinyl. Shown in silver and black.



The integrated bumper and grille introduces a note of massiveness and width, setting the stage for all that is new in the '57 Chevrolet! Note the more widely spaced headlights and new twin windsplits on the hood.

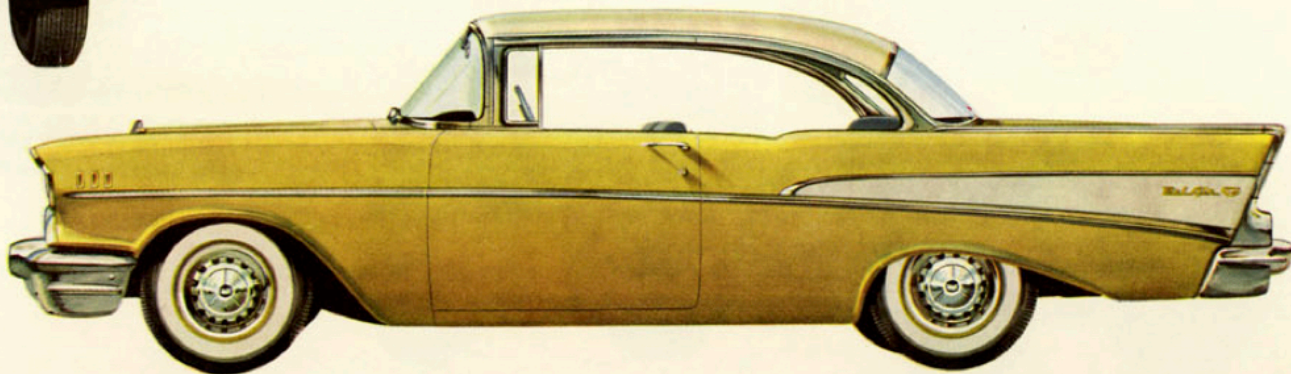


the **"TWO-TEN"** sport sedan

SHOWN IN LARKSPUR BLUE AND HARBOR BLUE

the **BEL AIR** sport coupe

SHOWN IN INDIA IVORY AND CORONADO YELLOW



the **BEL AIR** *convertible*

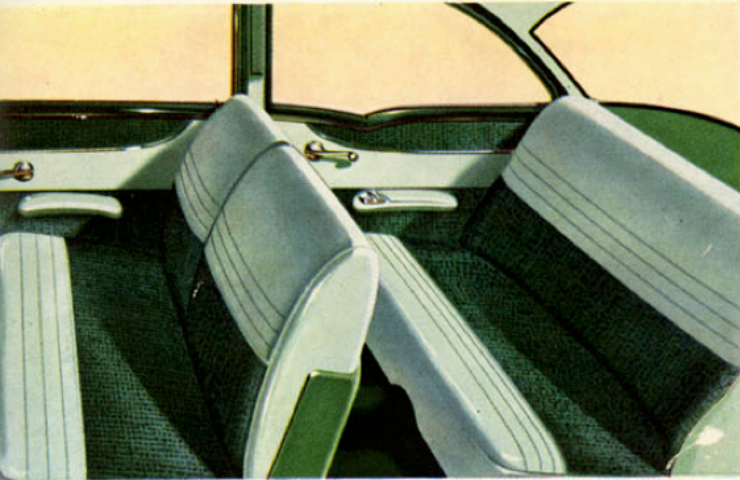
SHOWN IN CANYON CORAL WITH IVORY TOP

Here's the prettiest picture of top-down fun under the sun—in the large economy size! Sixteen handsome colors to choose from—and color-coordinated tops to contrast or blend with exteriors. Lavish interiors feature smart new vinyls, foam rubber seat cushions and deep-pile carpets. And when the weather's not its best, the power-operated top gives snug protection at a button-touch.



the **DELRAY** club coupe

SHOWN IN HIGHLAND GREEN

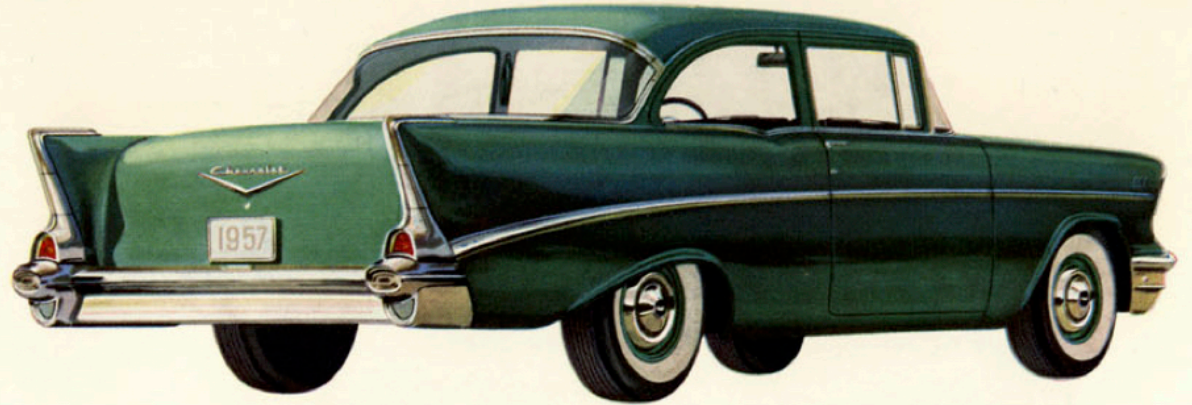


DELRAY CLUB COUPE Interior

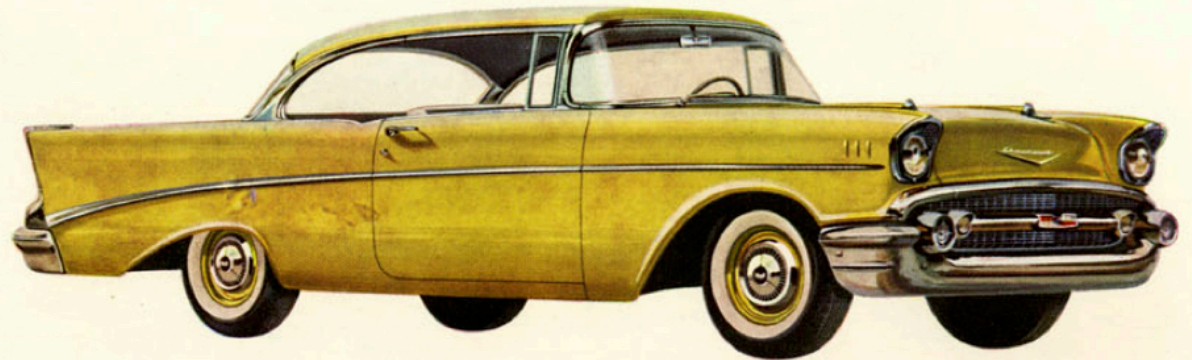
Distinctive new "Two-Ten" interior styling lends this six-passenger coupe a smartness all its own! For on-the-go families, its all-vinyl interior makes it doubly attractive (seats, headlinings and side-walls are washable!).

the **"TWO-TEN"** sport coupe

SHOWN IN COLONIAL CREAM



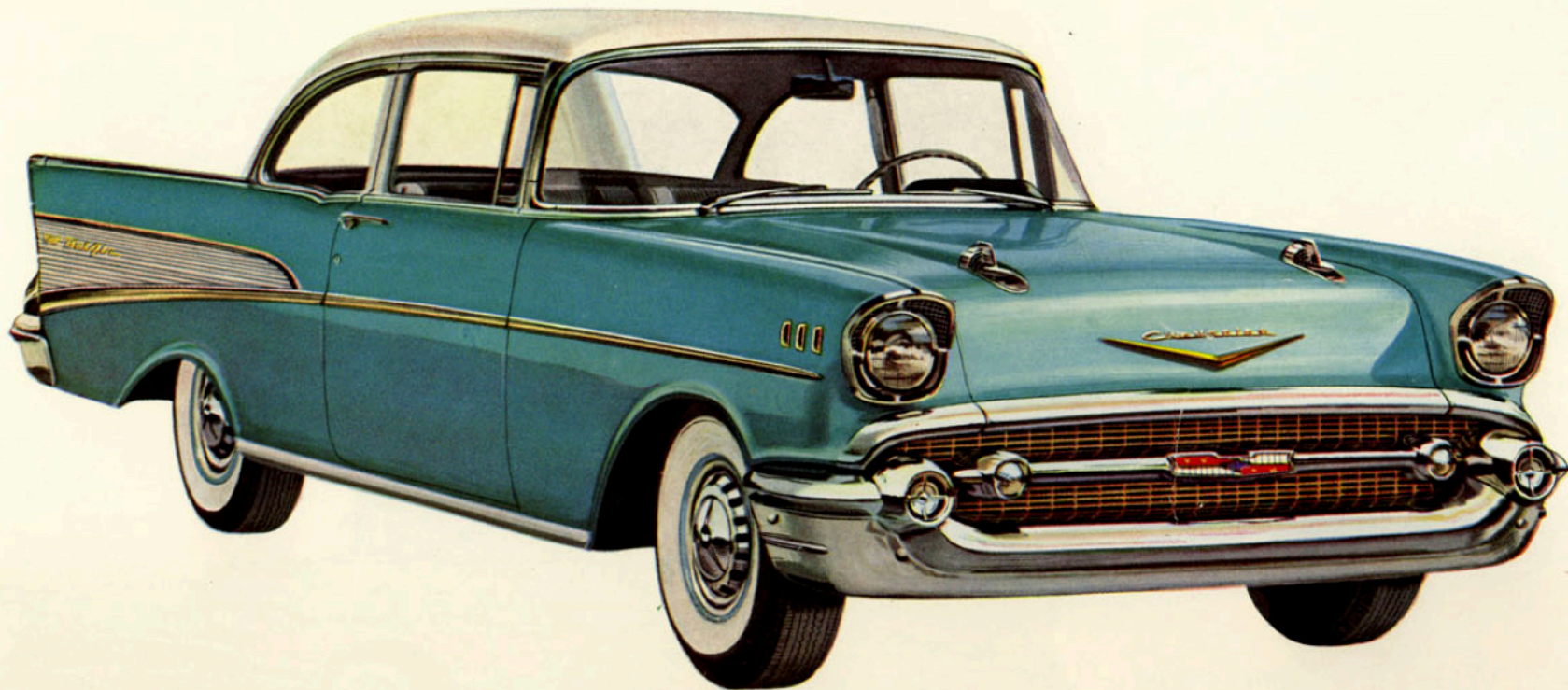
Take command behind this trim new "flight" panel! Instruments are clustered for easy reference, fully visible through the slimly tailored steering wheel with its safety-styled, recessed hub and off-centered spokes. Control knobs are finger-tip close, set deeply in a cove for added safety and smartness.

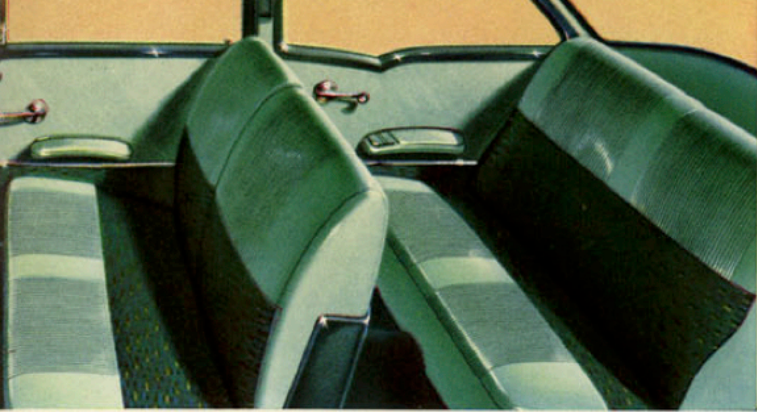


the **BEL AIR** *2-door sedan*

SHOWN IN INDIA IVORY AND TROPICAL TURQUOISE

Here is glamor—in the four most beautiful 2-door sedans in the low-price field! In every new detail the Bel Air series offers luxury far beyond its class. In the "One-Fifty" series you'll note fine car quality and stay-ahead styling at its lowest cost. Even the 3-passenger Utility Sedan, with extra load space in the rear compartment, offers nimble performance and eye-fetching good looks.



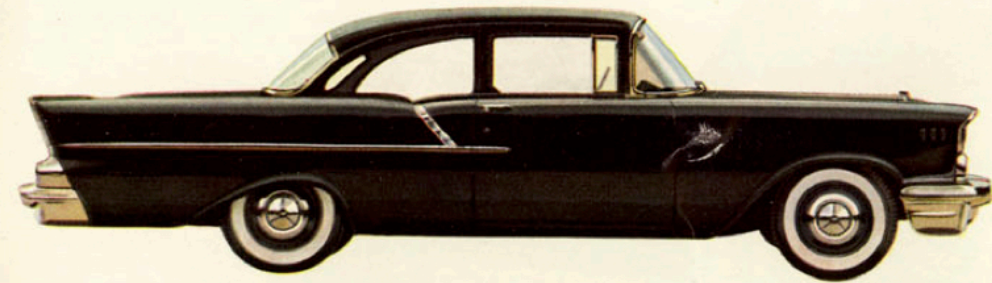


"TWO-TEN" 2-DOOR SEDAN Interior

There's a full measure of comfort in this roomy interior with foam rubber seat cushions in front. New appointments and trim show an attention to detail you expect only in more expensive cars.

the "TWO-TEN" 2-door sedan

SHOWN IN INDIA IVORY AND SURF GREEN

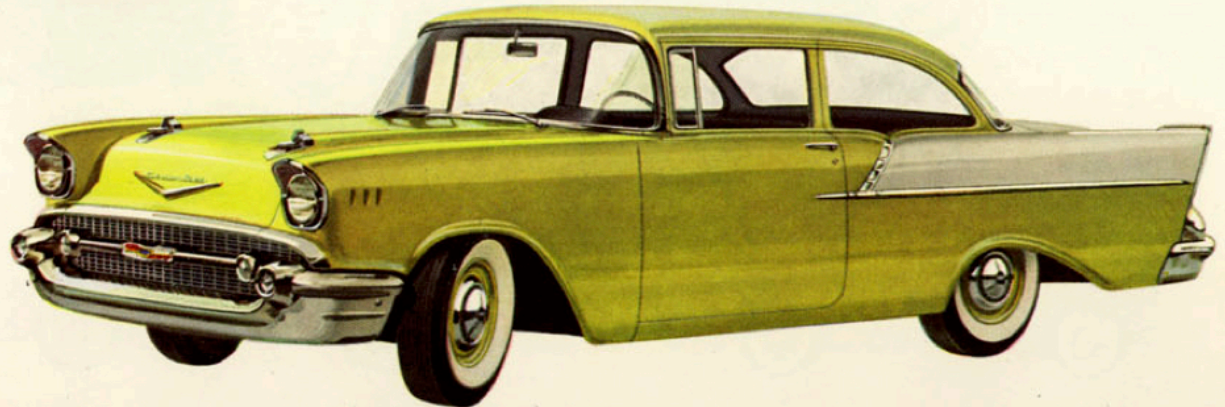


the "ONE-FIFTY" utility sedan

SHOWN IN ONYX BLACK

the "ONE-FIFTY" 2-door sedan

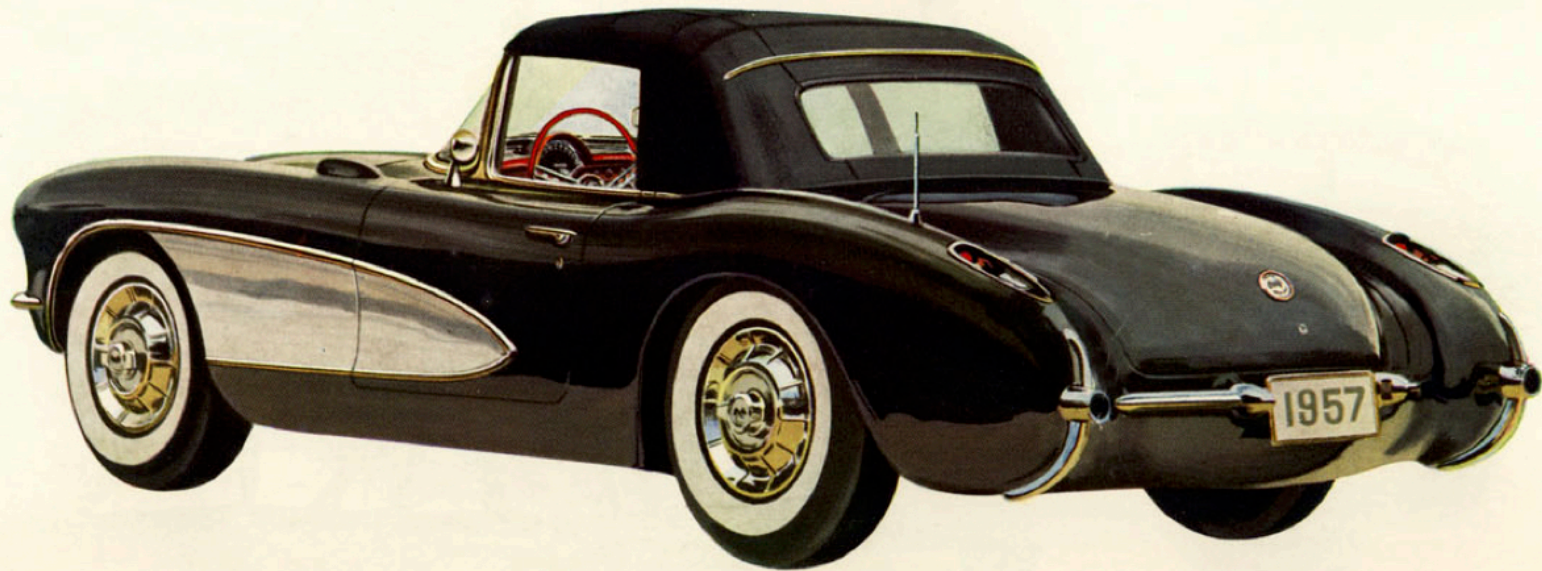
SHOWN IN INDIA IVORY AND COLONIAL CREAM



the CORVETTE

SHOWN IN ONYX BLACK AND SILVER

With the announcement of the '57 Corvette, Chevrolet unveils its new sports car V8 engine with *fuel injection*, the most advanced performance feature ever offered on an American production engine! Fuel injection is revolutionary. It does entirely away with the carburetor and makes greater useable power a wonderful reality. Accelerator response is instantaneous! And there are other high-powered, high-compression V8's too! In looks, the '57 Corvette magnificently combines the classic with the new. It reflects sports car styling tradition, yet is as far advanced in convenience and luxury as it is in power. Roll-up windows, for instance, and a choice of tops. Colors? They're beautiful, with six solids and six two-tones to choose from.



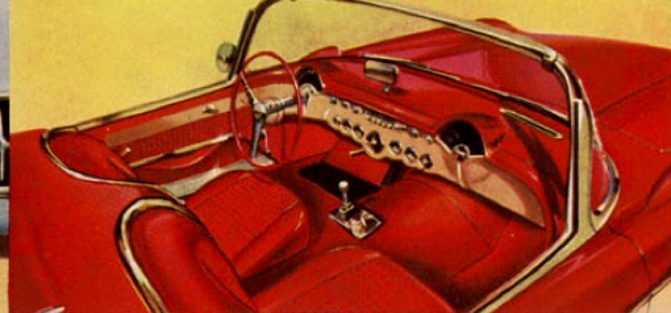
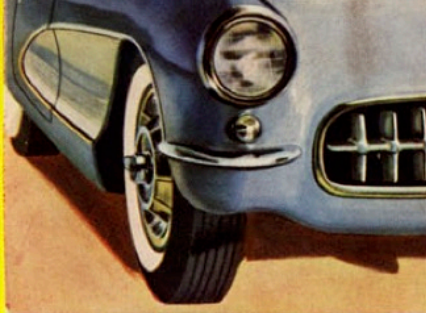
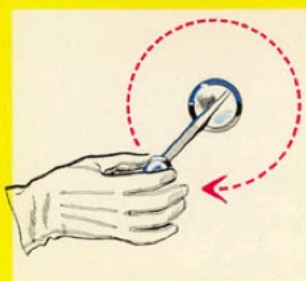
SPECIFICATIONS

ENGINE—Valve-in-head V8, 283-cubic-inch displacement. 3.88" bore x 3.0" stroke, 9.5 to 1 compression ratio, 4-barrel carburetor (twin 4-barrel carburetion or fuel injection system optional). High-lift camshaft, hydraulic valve lifters. Cast aluminum rocker covers. Buffed aluminum racing-type oil-wetted air cleaners. Full-pressure lubrication system with full-flow oil filter. Full dual exhaust system. Shielded ignition, 12-volt electrical system. Engine precision balanced after assembly. Maximum performance engine available with close-ratio Synchro-Mesh only on special order* features fuel injection system, 9.5 to 1 compression ratio, competition-type camshaft, and high-speed valve system with special valve springs, spring dampers, and mechanical valve lifters. **TRANSMISSION**—Choice of special 3-speed close-ratio Synchro-Mesh (2.2:1 low and reverse, 1.31:1 second, 1:1 high) with high-capacity 10-inch semi-centrifugal clutch, or optional Powerglide special automatic transmission.* Floor-mounted gear or range selector.

CHASSIS

Drive System—Hotchkiss drive, with unit-balanced tubular propeller shaft and universal joints. **Rear Axle**—With Powerglide, 3.55:1 ratio; with Synchro-Mesh 3.70:1 standard, 3.36:1 and 4.11:1 optional. **Frame**—Extra-rigid box girder frame reinforced with "X" member. **Suspension**—Independent coil front suspension with ride stabilizer. Outrigger mounted semi-elliptic rear springs. Direct double-acting shock absorbers. **Steering**—Full anti-friction steering gear with balanced steering linkage, 16:1 overall ratio. Turning diameter (curb to curb), 36.55 feet right, 36.93 feet left. **Brakes**—Hydraulic 11-inch self-energizing brakes with bonded linings. Mechanical parking brake on rear wheels. **Wheels and Tires**—Choice of black or white sidewall* standard 6.70-15 4-ply tubeless tires. Chrome wheel covers with simulated knock-off hubs. **Fuel Tank**—16.4-gallon capacity. Filler cap concealed in left fender. **EXTERIOR FEATURES**—Gloss-fibre-reinforced plastic body with sculptured side panels. Front hinged hood with automatic support. Large luggage locker with spare wheel well under floor, concealed top well behind seats. Dual exhaust ports. Chrome-bound windshield. Choice of manually operated fabric top or lightweight easily removable plastic hardtop. Power operation* and hardtop* also optional with fabric top. **INTERIOR FEATURES**—Individually adjustable bucket seats with safety belt* and shoulder harness.* Wide doors with built-in arm rest, pushbutton door handle, key lock, inside door release. Choice of crank-operated or power* window lifts. Ash tray and glove compartment between seats; simulated roll on instrument panel and doors, rubber-backed carpeting, metal door kick panels, sills, and step plates. Competition-type steering wheel with three spring steel spokes. Speedometer, tachometer, ammeter, fuel level, oil pressure, and coolant temperature gauges. Signal-seeking transistorized radio*, heater*, directional signals, electric clock, cigarette lighter, outside and inside rear-view mirror, windshield washer*. **COLORS**—The 1957 Corvette is available in your choice of six solid exterior colors or six two-tone combinations with color-keyed interior and matching or contrasting top. **DIMENSIONS**—Wheelbase, 102". Length, 168.0". Overall height: top down, 49.2"; Convertible top, 51.1"; hardtop, 51.0". Height at door, 33.0". Road clearance, 5.8". Width, 70.5". Tread, 57.0" front, 59.0" rear.

*Optional at extra cost.



ALL-WEATHER COMFORT

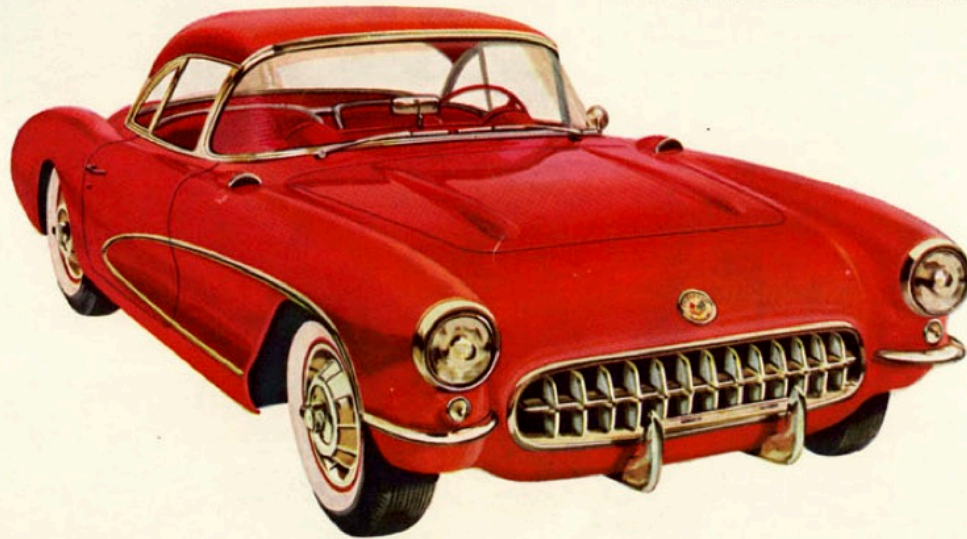
Weather-tight **roll-up** windows, crank operated, are standard equipment in the Corvette. Power window lifts add luxury as an extra-cost option.

LOOK-AHEAD STYLING

The Corvette's looks are enhanced by **sculptured side panels** in high-set fenders. Headlights extend forward to continue its theme of rakish length.

COCKPIT LUXURY

In this colorful cockpit, form-fitted luxury is the keynote. A **competition steering wheel** and full instrument complement including clock and tachometer add sports car convenience. Notice the floor-mounted **stick shift** within easy reach.



HERE IS TOP NEWS FOR SPORTS CAR FANS!

Sports car weather lasts all year round in the '57 Corvette! There's a choice of **manual** or **power-operated fabric top**, or a **lightweight**, easily removable **hardtop**. You can change from roadster to coupe quickly and handily.



the **BEL AIR** TOWNSMAN *4-door 6-passenger station wagon*

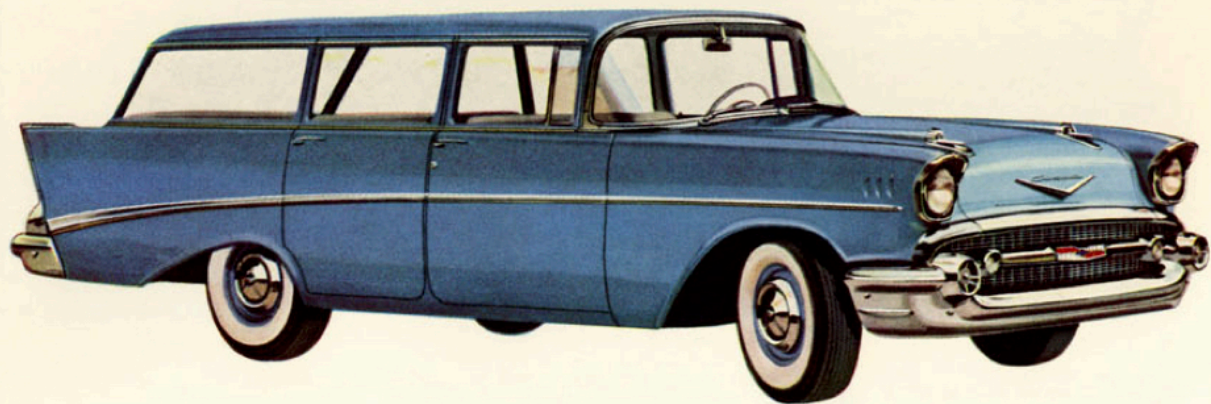
SHOWN IN COLONIAL CREAM AND LAUREL GREEN

Chevrolet station wagons are born with a wanderlust—eager to go at the drop of a tailgate! For '57 there are six of the handsomest travelers ever, including one model 9-passenger big. New exteriors are colorful and smart—either for town or country. Bel Air interiors combine Jacquard-loomed pattern cloth with vinyl. In "Two-Tens" and "One-Fifties" interiors are all vinyl—washable, rugged, extremely handsome.



"TWO-TEN" BEAUVILLE Interior

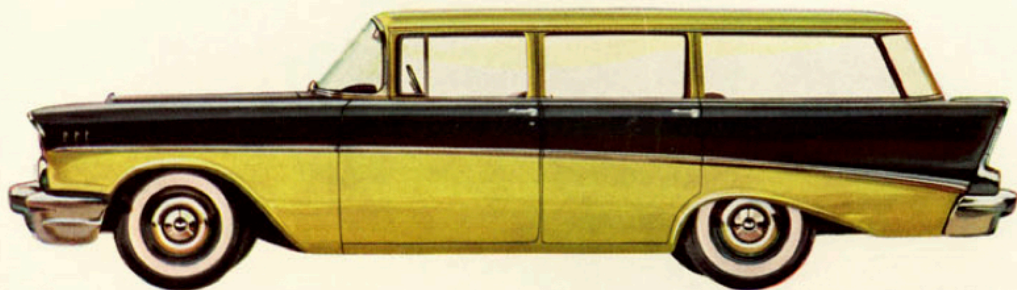
This all-purpose station wagon offers sedan luxury and comfort for nine. For extra load space the rear seat removes in a jiffy. But that's not all! Fold the second seat and you have a cargo platform nearly nine feet long with tailgate lowered.



the **"TWO-TEN"** BEAUVILLE 4-door 9-passenger station wagon

SHOWN IN LARKSPUR BLUE

Think of the many wonderful uses for that generous cargo area! Going on a camping trip? Pile in your gear (a half-ton is not too much). Garden tools to haul? Lumber for that do-it-yourself project? A Chevrolet station wagon can handle it beautifully! There's 87 cubic feet of space ready and willing for any chore!



the **"TWO-TEN"** TOWNSMAN 4-door 6-passenger station wagon

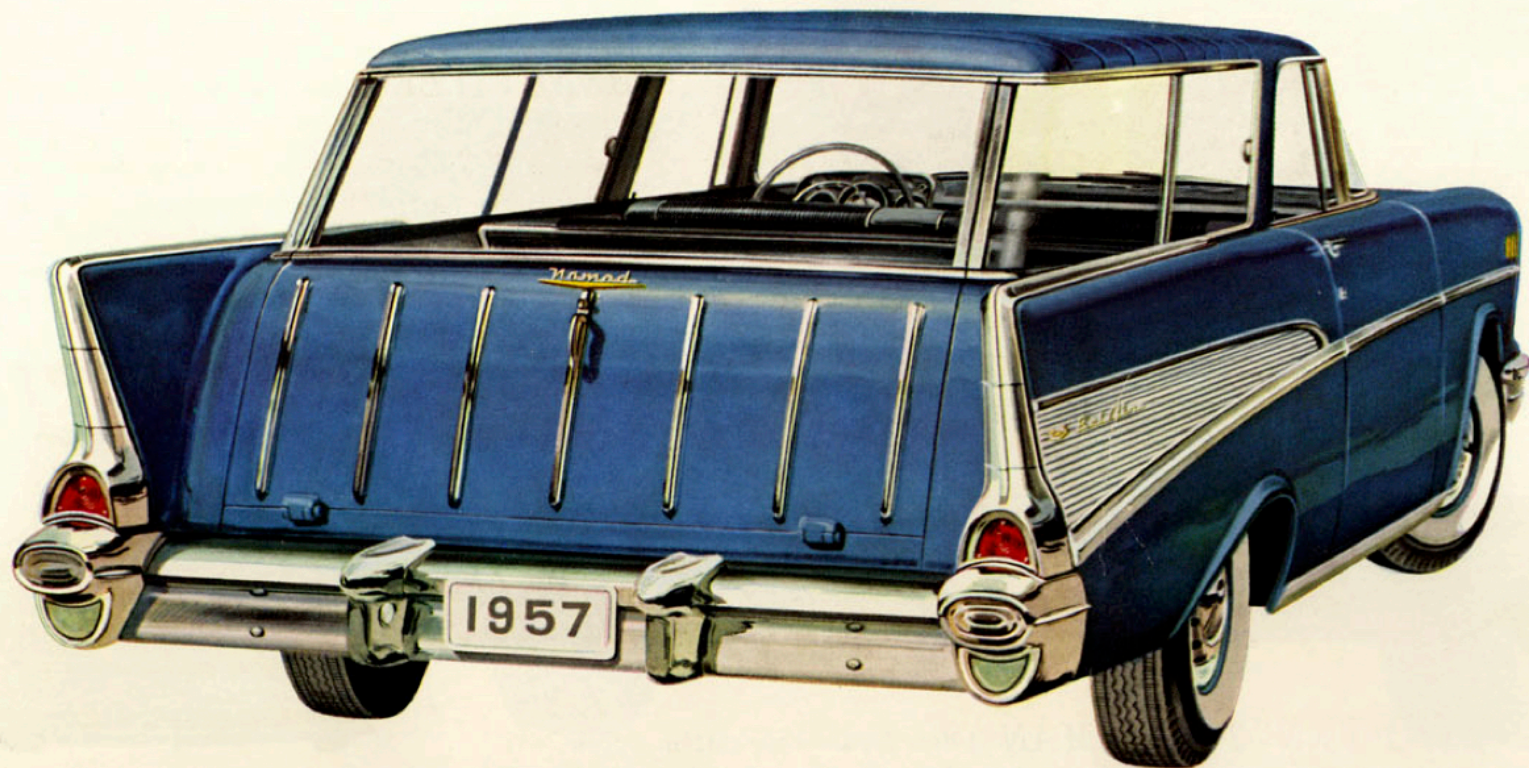
SHOWN IN ONYX BLACK AND COLONIAL CREAM

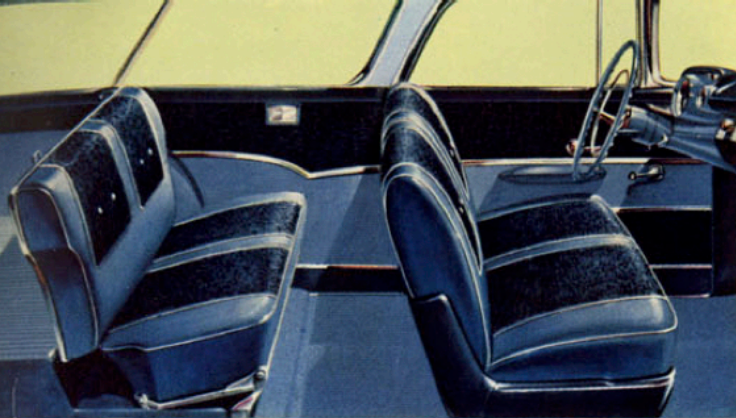


the **BEL AIR** NOMAD 2-door 6-passenger station wagon

SHOWN IN HARBOR BLUE

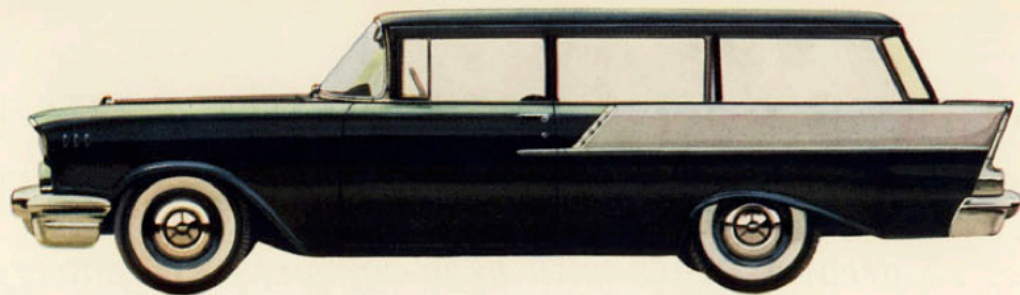
If you've set your heart on a 2-door station wagon, here is a handsome threesome. The sports model Nomad is a dream car come true, beauty queen of all station wagons. The "Two-Ten" has a fashionable appeal of its own. And the budget-priced "One-Fifty" Handyman is the station wagon buy of the year. No matter which you choose, there's a barrel of fun ahead for you in your '57 Chevrolet station wagon!





BEL AIR NOMAD Interior

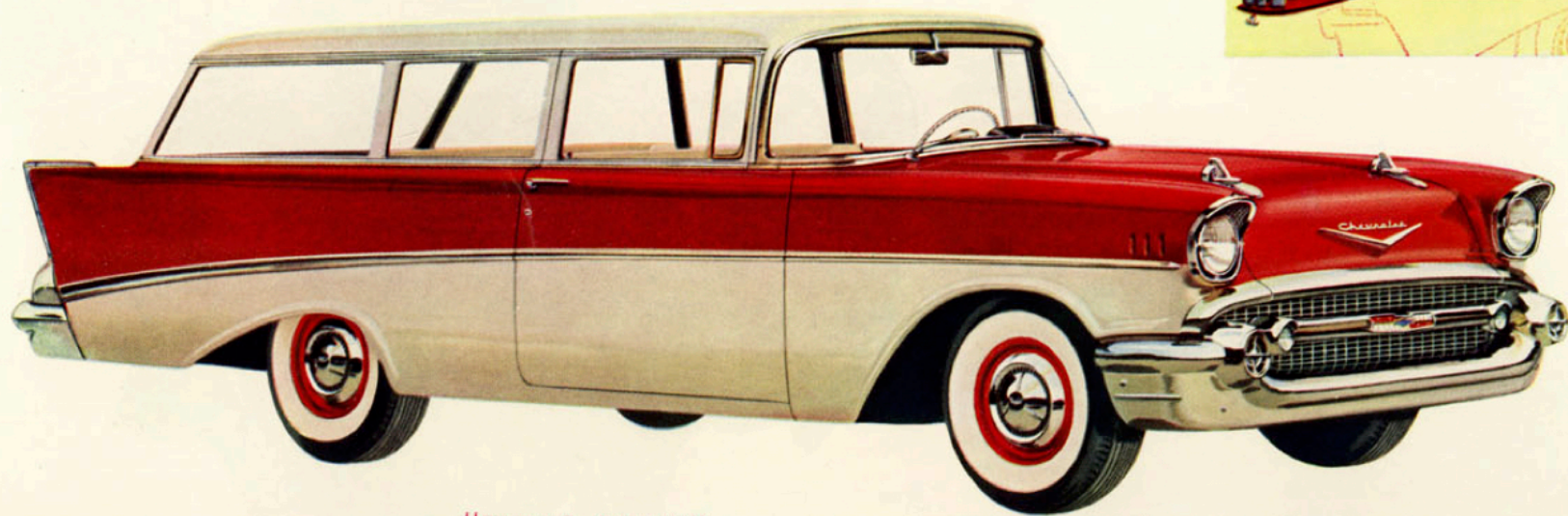
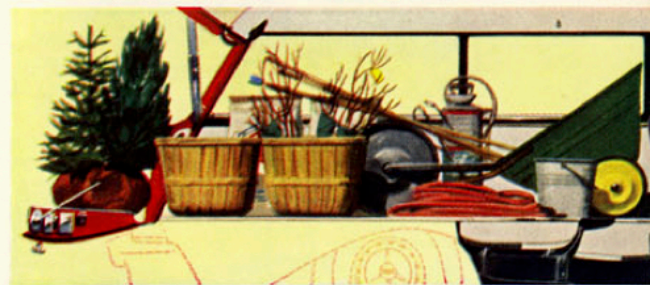
The sports model Nomad is a dream car come true—luxurious is the word for it. In this stylish interior you set your own fashion, with many two-tone color combinations to choose from (as in all Bel Air models). The Nomad's bright metal roof bows accent the textured vinyl headlining.



the **"ONE-FIFTY"** HANDYMAN 2-door 6-passenger station wagon

SHOWN IN ONYX BLACK AND INDIA IVORY

Workaday wonders—Chevrolet station wagons! In 6-passenger models the rear seat folds flush with the floor, extending the load platform 35 inches. Interiors in "Two-Tens" and "One-Fifties" are of washable vinyl that thrives on hard wear.



the **"TWO-TEN"** HANDYMAN 2-door 6-passenger station wagon

SHOWN IN INDIA IVORY AND MATADOR RED

CHEVROLET'S POWER LINE-UP FOR '57 OFFERS SENSATIONAL NEW FUEL INJECTION!

... 5 great engines with high-compression power!

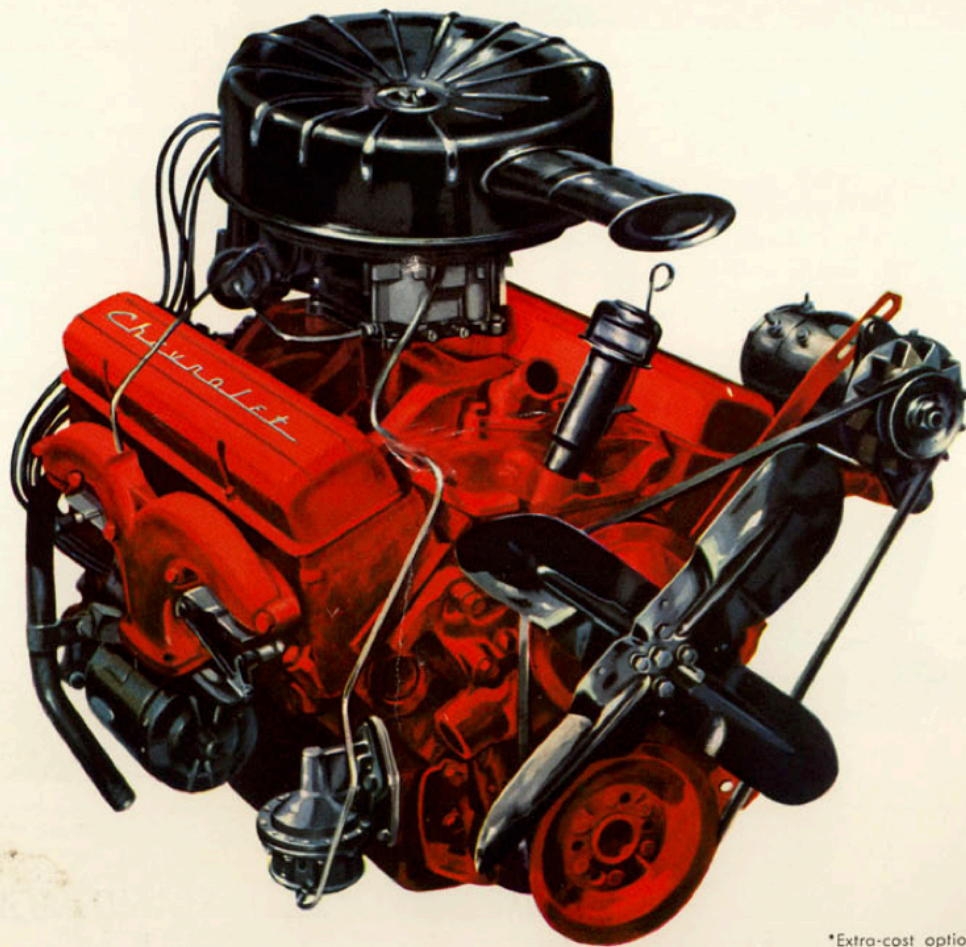
THE "SUPER TURBO-FIRE 283"

A NEW PEAK IN
SMOOTH V8 PERFORMANCE!

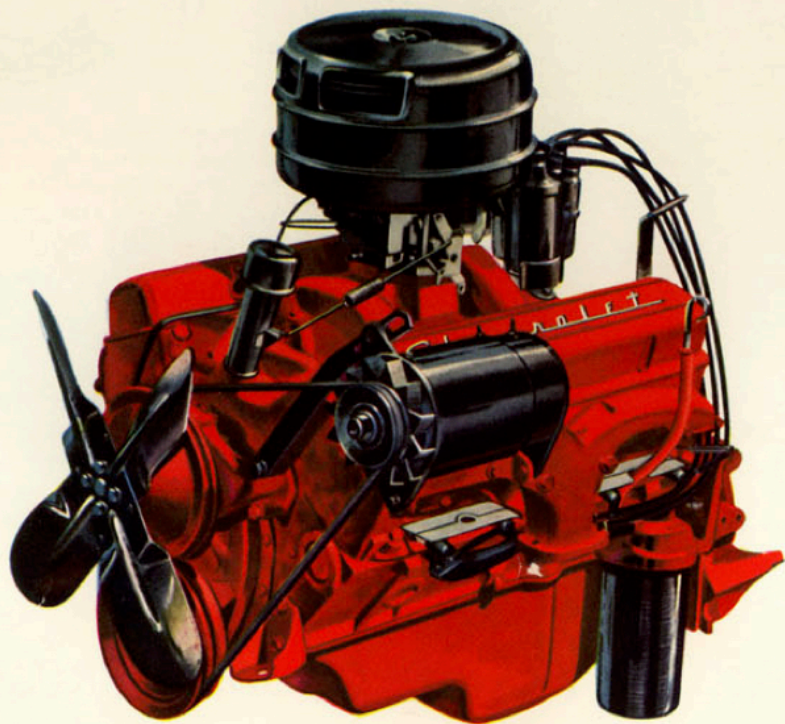
In its advanced new short-stroke "Super Turbo-Fire 283,"* Chevrolet announces headline power news for '57! This mighty V8 delivers high-compression horsepower and husky torque. Big-bore 283-cubic-inch displacement and ultra high 9.5 to 1 compression ratio in the "Super Turbo-Fire 283" deliver a new peak in efficiency. Add balanced 4-barrel carburetion . . . new high lift camshaft . . . Fire Swirl combustion chamber design . . . new ram's horn exhaust headers and dual exhausts . . . new unitized starter . . . plus other advanced features—and you have America's newest and best power buy for 1957. What's more, it is available in all passenger car models and with your choice of four great transmissions.

NEW! "CORVETTE V8" *with fuel injection*

Here's even greater performance—two powerful versions of the special "Corvette V8"* engine, available in all passenger car models for 1957! One version gives you extra power using twin 4-barrel carburetors—the other offers you Chevrolet's trend-starting new fuel injection, most far-reaching engine improvement in the entire industry! With the carburetor completely eliminated, fuel injection results in the most instantaneously responsive power you've ever known . . . and a brand new measure of fuel efficiency!



*Extra-cost option



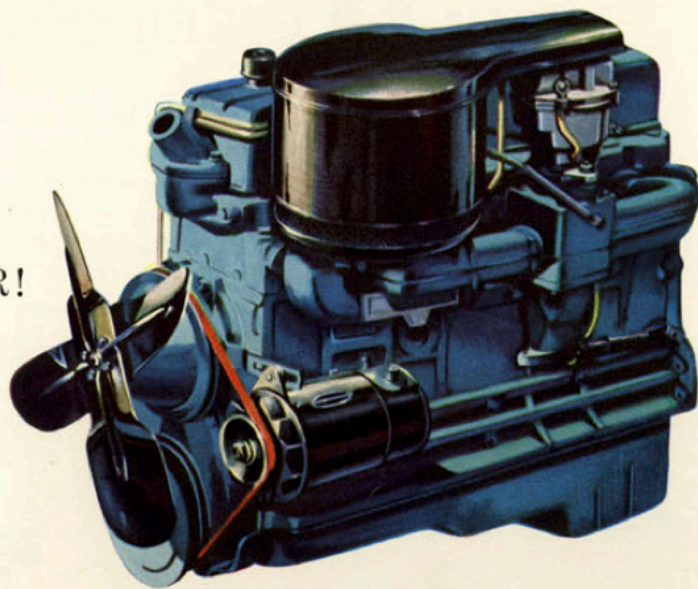
“TURBO-FIRE 283”
 “TURBO-FIRE 265”

V8 POWER AT LOW COST!

For '57 Chevrolet announces two lower cost versions of "Turbo-Fire" design—engineered for economical V8 performance, high torque and horsepower. The 283-cu.-in. "Turbo-Fire 283,"* with 8.5 to 1 compression ratio, is available in all models with automatic drive. Its running mate, the "Turbo-Fire 265" has a 265-cu.-in. displacement, 8.0 to 1 compression ratio and is available in all models equipped with Overdrive or Synchro-Mesh transmissions. All V8's are of Chevrolet's famous short-stroke valve-in-head design. All are precision balanced in assembly, extra light, extra rigid, extra compact—built to the road-proved design that makes Chevrolet so well balanced and maneuverable, so much fun to go in!

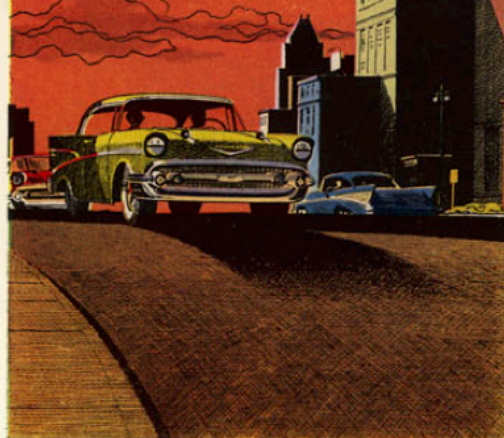
FAMOUS “BLUE-FLAME” SIX
 WORLD'S STANDARD OF SIX-CYLINDER POWER!

Proved the world's favorite Six, and quality-built by the valve-in-head leader! Its high horsepower and record-high 8.0 to 1 compression ratio mean smooth acceleration and brilliant performance from standstill to full throttle—plus extra mileage from every drop of fuel. Performance and economy are not all—it's a winner for rugged dependability, too. Full-circle, full-depth cooling . . . hydraulic valve lifters with all drives . . . alloy steel exhaust valves . . . extra powerful 12-volt electrical system . . . controlled full-pressure lubrication . . . these features are only a few that make it the world's leading Six!



REVOLUTIONARY NEW TURBOGLIDE

*with triple-turbine-takeoff
... the greatest new contribution
to automatic driving in years!*



New Hill Retarder Feature!



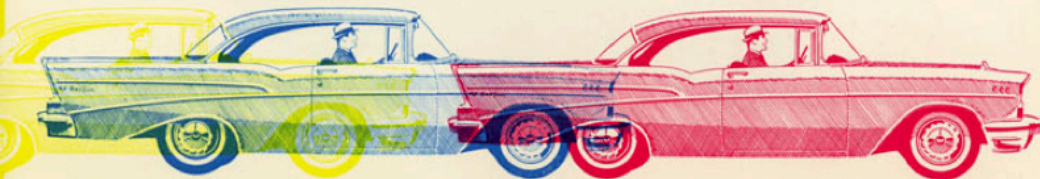
You'll welcome the convenience of Turboglide's selector quadrant with its five positions: Park, Reverse, Neutral, Drive and Hill Retarder. To help save your car's regular brakes, Hill Retarder gives extra braking on steep downgrades.

Chevrolet pioneers again—introducing still another engineering first! This **all-new** automatic drive* puts **three turbines** to work, bringing new smoothness and performance to the low-price field! With an infinitely variable torque ratio from standstill to cruising speed, you experience an unbroken flow of power—and not the slightest hint of a shift! Single forward Drive range! Amazing new Hill Retarder! All this is achieved with **less weight, fewer parts** and **simpler controls!**

PLUS **3** OTHER OUTSTANDING DRIVES TO CHOOSE FROM!

POWERGLIDE—Proved by Billions of Miles

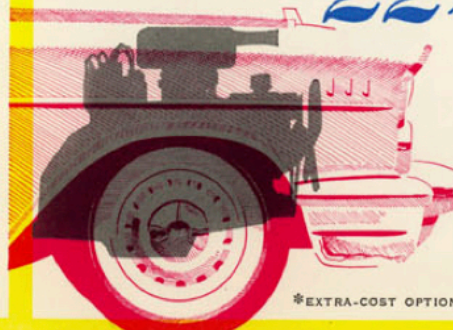
Powerglide* lets you go lightly and sprightly. It's simply a matter of slipping the selector lever into Drive, and automatically you're on your merry way! Over two million owners have made Powerglide their choice for carefree motoring—with billions of miles of smooth, quiet, economical city-and-country cruising as solid proof that this is **America's favorite** automatic transmission.



Touch-Down OVERDRIVE

You'll enjoy Overdrive's* wonderful **fuel savings** and if you need top performance the touch-down feature delivers that tool

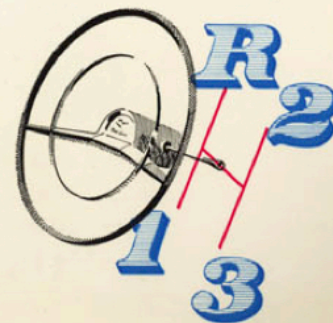
ENGINE SPEED REDUCED **22%**



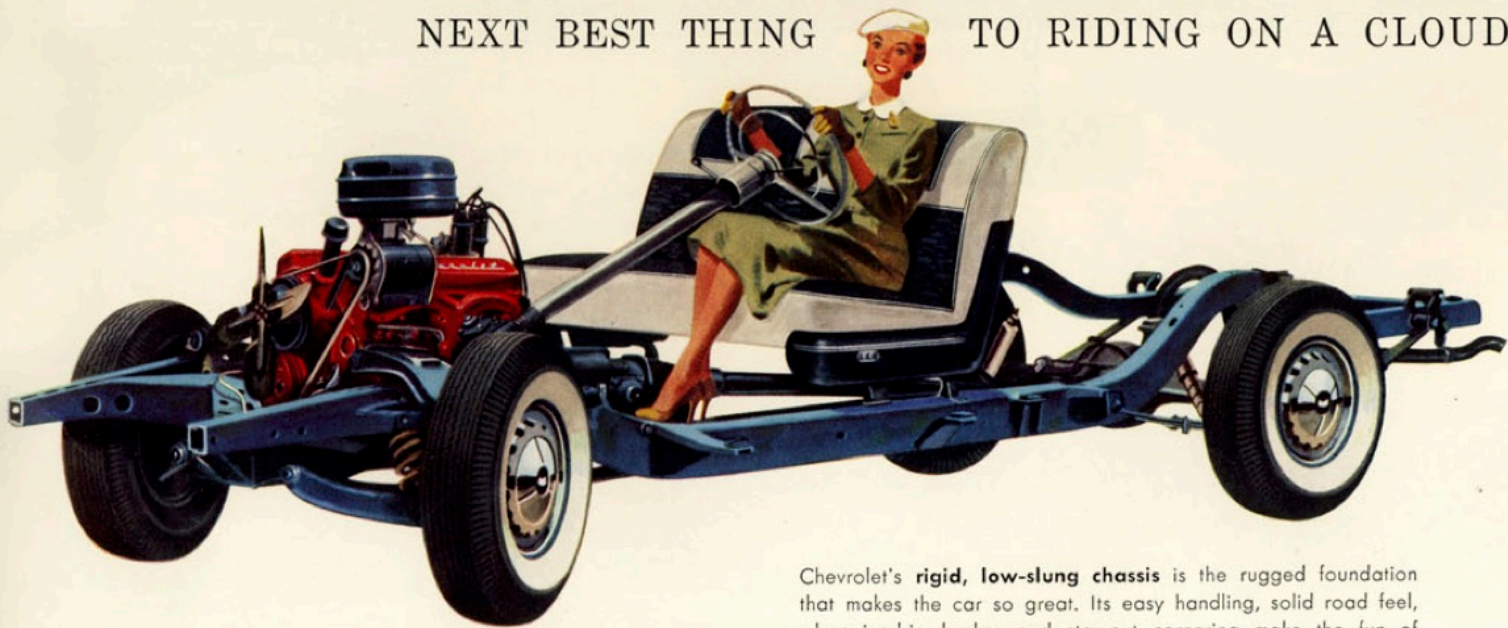
*EXTRA-COST OPTIONS

Famous 3-Speed SYNCHRO-MESH

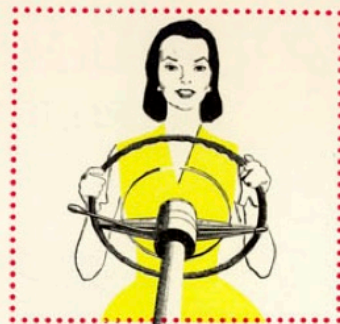
You have standard driving at its finest in Chevrolet's smooth-shifting 3-speed Synchro-Mesh, **improved** for greater operating ease.



NEXT BEST THING TO RIDING ON A CLOUD!



Chevrolet's **rigid, low-slung chassis** is the rugged foundation that makes the car so great. Its easy handling, solid road feel, whopping-big brakes and stay-put cornering make the fun of going every bit equal to the fun of getting there!

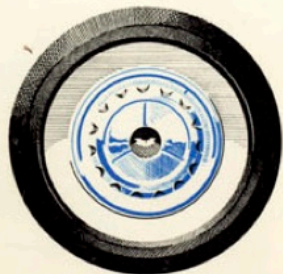


BALL RACE STEERING

No matter where you turn—you will enjoy the **light touch** and **precise control** of Chevrolet's low-friction ball bearing steering.

NEW LOW-PRESSURE TIRES

A **smoother ride** for '57! These luxurious-looking 7.50 x 14 tires soak up more road shock, and with all the safety of tubeless tires.



GLIDE-RIDE FRONT SUSPENSION

Chevrolet's spherical joint design and **extra rugged** shock absorbers tame the roughest travel!



DOUBLE-PUNCH 12-VOLT SYSTEM

Fast, powerful starting is always a snap! Chevrolet's powerful electrical system delivers an extra jolt of high ignition power to spark plugs.



HUSKY OUTRIGGER REAR SPRINGS

The going is **always easy** in Chevrolet! Extra long rear springs are outside the frame to steady the ride and cushion drive shocks.



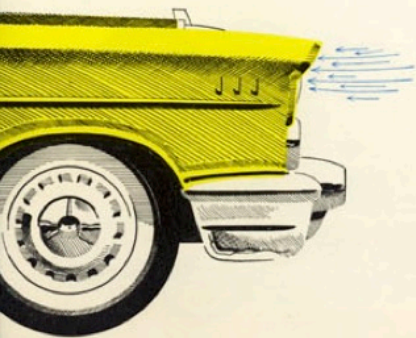
SOLID BEAUTY CRAFTED WITH A VIEW TO SAFETY!

Beneath the gleaming beauty of Chevrolet's Body by Fisher lies a safety-engineered structure with double walls of steel! Just a few advanced-design features are four-fender visibility, brawny roof bow, massive roof rails, unitized side frames, and safety glass all around. **Engineered-in safety all around you**—that's Fisher Body quality Chevrolet shares with the highest priced cars!



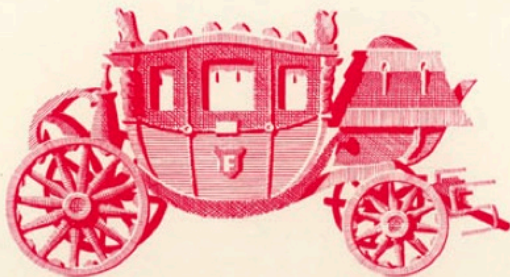
NEW HIGH-VOLUME VENTILATION

Hooded air intakes at the headlights deliver **high, clean air** in large amounts, to make driving the great new '57 Chevrolet a **refreshing** experience no matter what the weather.



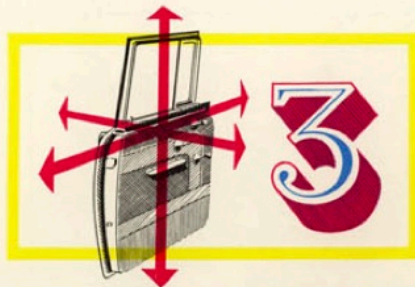
EXCLUSIVE BODY BY FISHER

The Fisher Body emblem—**hallmark of craftsmanship**—is exclusive to Chevrolet in its field. In every detail the '57 Chevrolet reflects fine car coachcraft.



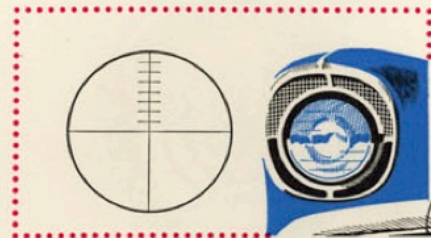
TRIPLE-LOCKING DOOR LATCHES

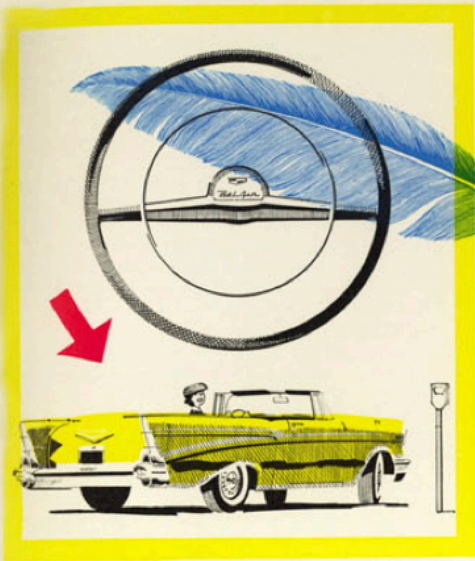
Chevrolet's **traditional built-in safety** is evident in the sturdy design of these guardian door latches. Their triple grip of steel acts to prevent doors opening under impact.



PRECISION-AIMED HEADLIGHTS

The low beam is patterned far along the road for **safe night-time travel**. These powerful lamps have special aiming lugs for precise adjustment—even with lights turned off.





POWER STEERING*

This **power-touch** eases the toughest travel! No matter how rough the going—in deep ruts, gravel, snow or sand—Chevrolet's cushioned power steering helps you hold a steady course. Parking is almost as **effortless** as flexing your wrist!



POWER BRAKES*

Stopping is **smooth** and **effortless** with famous Chevrolet power brakes! Just gentle the pedal with your toe and more than a ton of stopping force goes to work to keep you safe. Power brakes are so easy on the driver—and there is nothing new to learn!

JUST A LITTLE TOUCH HERE AND THERE... *adds so much to luxurious driving!*



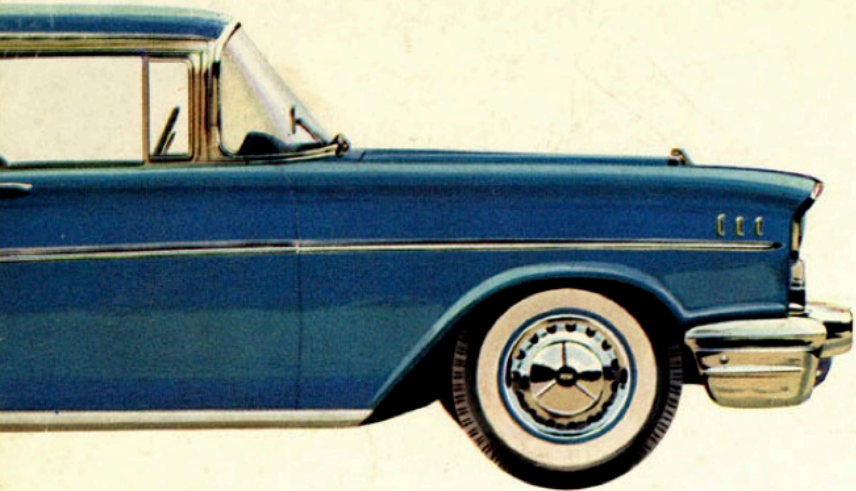
POWER SEATS AND WINDOWS*

These power assists put extra motor-ing convenience easily within your reach. The front seat is power-positioned—**up** and **forward**, **down** and **back**—by a handy control switch. And you can automatically raise or lower **all four** windows for best comfort.

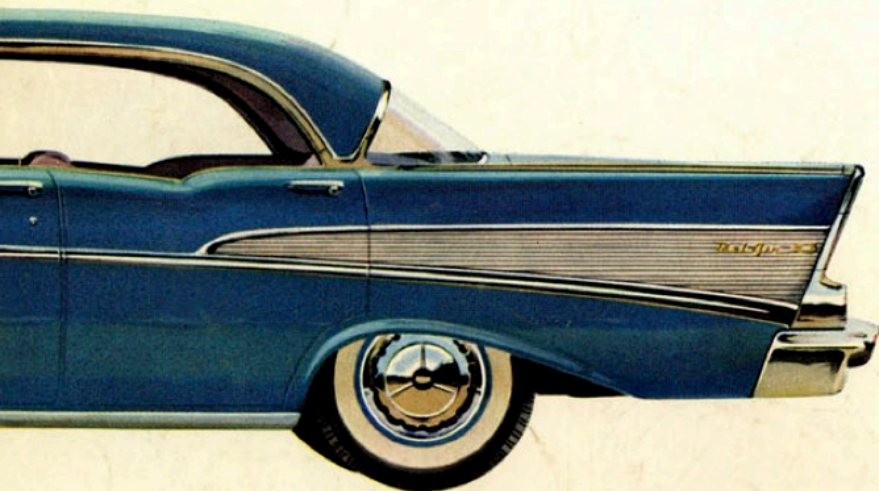


AIR CONDITIONING*

The weather forecast is always "Fair and Fresher" in your air-conditioned Chevrolet! No matter what the temperature outside, it is a simple matter to circulate **warm** or **cool air**—as you like it! Underhood mounting of units saves valuable luggage space.



HERE'S WHAT'S IN IT FOR YOU:



... THE POWER TEAM OF YOUR CHOICE

All power teams available in all **Bel Air**, **"Two-Ten"** and **"One-Fifty"** models. See your Chevrolet dealer for the price of the power team you prefer.

	Turboglide	Powerglide	Overdrive	Synchro-Mesh*
"Corvette V8" 283-cu.-in. V8, 9.5:1 c.r. Twin 4-barrel carburetion**	•	•	•	•
"Super Turbo-Fire 283" 283-cu.-in. V8, 9.5:1 c.r. Single 4-barrel carburetion	•	•	•	•
"Turbo-Fire 283" 283-cu.-in. V8, 8.5:1 c.r. 2-barrel carburetion	•	•		
"Turbo-Fire 265" 265-cu.-in. V8, 8.0:1 c.r. 2-barrel carburetion			•	•
"Blue-Flame" 235-cu.-in. Six, 8.0:1 c.r. Single-barrel carburetion		•	•	•

*Choice of regular Synchro-Mesh or special close-ratio 3-speed available with "Corvette V8" engine only.
**Fuel injection system also available with all transmissions except Overdrive.

All Chevrolet engines feature highly efficient valve-in-head design, aluminum pistons, automatic choke, positive-shift starter, forged steel crankshaft, 12-volt electrical system, full pressure lubrication. Full dual exhaust system standard on "Corvette V8" and "Super Turbo-Fire 283." Hydraulic valve lifters on all power teams shown above. Maximum performance version of "Corvette V8" available with close-ratio Synchro-Mesh only on special order features fuel injection system, 9.5 to 1 compression ratio, competition-type camshaft, and high-speed valve system with special valve springs, spring dampers, and mechanical valve lifters.

LUXURY—IN AND OUT

All 1957 Chevrolet models are available in a wide range of exterior colors in either solid tone or two-tone combinations, with distinctive two-tone interiors keyed to exterior color. Your Chevrolet dealer can show you all these exciting exterior colors and actual samples of every fine fabric and costly vinyl interior material.

Bel Air Series—the ultimate in luxury, with gold anodized aluminum grille screen and decorative accents. Ribbed two-tone silver anodized aluminum panel on rear fender and bright metal body sill molding are optional at extra cost. Seven two-tone interiors keyed to exterior color.

"Two-Ten" and "One-Fifty" Series feature silver anodized aluminum grille screen and bright metal decorative accents. Three two-tone interiors, keyed to exterior color. "One-Fifty" sedan interior harmonizes with exterior color. Handyman offers two two-tone interiors, keyed to exterior color.

EXTRA SAFETY ALL AROUND

Rugged all-steel body structure with unitized side panels, double-walled doors, triple-safe door latches, welded-in instrument panel, and central roof bow on all closed models. High quality polished lacquer finish. Convenient single key lock system. High volume ventilation system with air inlets above headlights. Counterbalanced hood with positive safety latch. Concealed deck lid hinges. Hydraulic-powered top on convertible.

FIRM FOUNDATION

Extra-rigid welded box girder frame (special center X in convertible). Glide-Ride front suspension with independent coil springs, low-friction spherical joints, and exclusive anti-dive braking action. Outrigger rear suspension, with extra-long permanently lubricated leaf springs. Life-sealed double-acting shock absorbers. Luxury-cushion 7.50-14 4-ply (6-ply on 9-passenger station wagon) tubeless tires. Powerful hydraulic self-energizing Jumbo-Drum brakes with 11" drums and bonded linings. Mechanical parking brake on both rear wheels. Exclusive Ball-Race steering gear with balanced linkage. Proved 12-volt electrical system, 54-plate battery with 36-month warranty. Precision-aimed sealed beam headlights. Built-in directional signals. Rear axle ratio matched to power team: Synchro-Mesh, 3.55:1; Overdrive, 4.11:1; Powerglide and Turboglide, 3.36:1. Fuel tank capacity: station wagons, 17 gallons; other models, 16 gallons.

MEASURES OF QUALITY

Wheelbase, 115". Front tread 58.0", rear tread, 58.8". Overall dimensions: length 202.8"; width 73.9"; loaded height 60.5" (sport coupe, sport sedan, convertible 59.1", station wagons 60.8").

THESE ARE OPTIONAL AT EXTRA COST

Power steering. Power brakes. Power windows. Power front seat. E-Z-Eye glass. Padded instrument panel. Heater. Air Conditioner. Electric windshield wipers. White sidewall tires (rayon or nylon cord). Heavy-duty 6-ply tires. Heavy-duty clutch, heavy-duty rear springs, and other mechanical features. Safety belt, shoulder harness, choice of radios, and full range of other accessory equipment.

AND IN PRICE...

Chevrolet is traditionally America's lowest priced line of quality automobiles. See your Chevrolet dealer for the exact delivered price of the model of your choice, equipped as you like it.



ALL ILLUSTRATIONS AND SPECIFICATIONS CONTAINED IN THIS LITERATURE ARE BASED ON THE LATEST PRODUCT INFORMATION AVAILABLE AT THE TIME OF PUBLICATION APPROVAL. THE RIGHT IS RESERVED TO MAKE CHANGES AT ANY TIME WITHOUT NOTICE IN PRICES, COLORS, MATERIALS, EQUIPMENT, SPECIFICATIONS AND MODELS, AND ALSO TO DISCONTINUE MODELS.

CHEVROLET MOTOR DIVISION • GENERAL MOTORS CORPORATION, DETROIT 2, MICHIGAN