

# '83 DODGE 400



America's Driving Machine

## Dodge 400. America's Personal Driving Machine.

Since its wheels first touched the pavement last year it has been obvious that Dodge 400 is an automobile with a purpose: to rekindle the pure enjoyment of driving.

Chrysler Corporation designers and engineers have long been committed to providing America with highly efficient driving machines. Cars that are engineered with front-wheel drive technology for precise handling and stability. This commitment reached fulfillment in 1982 with the Dodge 400, America's *personal* driving machine.

All Dodge 400s are designed with a canny awareness of energy economy. An improved 2.2-liter Trans-4 overhead cam four-cylinder engine, with redesigned

intake manifold and intake and exhaust valves, plus increased horsepower and higher torque provide more than adequate performance along with outstanding economy. For Dodge 400 two-door:

**28** EPA EST MPG;\* 44 estimated highway.

For 1983, Dodge 400 proudly presents a four-passenger convertible and distinctive two- and four-door models.

*\*Use EPA EST MPG numbers for comparison. Your mileage may differ depending upon speed, weather, and trip length. Actual highway mileage will probably be lower than highway estimate. In California: **26** EPA EST MPG; 41 estimated highway.*



Dodge 400 two-door coupe shown in Crimson Red with Crimson Red vinyl roof.

*ABOUT THIS CATALOG. We have tried to make this catalog as complete as possible. And we hope you find it useful. However, since the time of printing, some of the information you'll find here may have been updated. Your dealer has details, and you should ask him for current information before ordering.*

*Some of the equipment shown or described throughout this catalog is available at extra cost.*



Dodge 400 convertible in Crimson Red, with Red/White bucket seat interior.

Dodge 400 four-door sedan in Sable Brown, with Sable Brown vinyl roof.

**Dodge 400. Once again,  
driving becomes  
a moving experience.**

All Dodge 400s provide you with a genuinely personal driving experience—the Dodge 400 driving experience. It's obvious in the driving compartment, with a standard center console and new standard five-speed manual transaxle in two-door coupe models. The luxury two-spoke color-keyed steering wheel provides a touch of class. Low-back bucket seats with dual recliners and adjustable head restraints, passenger side visor vanity mirror, and dual remote controlled color-keyed

outside mirrors are standard on the Dodge 400 convertible.

The Dodge 400 driving experience can be yours today. The selection is superb, and the choice is yours. Owning one is like owning the open road. Shown below is the impressively sporty atmosphere of the Dodge 400 convertible with Red/White vinyl reclining bucket seat interior.



**Dodge 400 Two-Door Coupe.**  
Midsize luxury that was  
meant to be driven.

How personal would you like your car to be? They don't come much more personal than the Dodge 400 two-door coupe. This is the midsize sport coupe that offers all the room, ride, handling, comfort, and performance that you would expect in a personal driving machine—plus outstanding economy and efficiency.

It starts with Dodge's advanced front-wheel drive technology. Then, power-assisted rack-and-pinion steering allows a road "feel" that lets you know you're in control.



Dodge 400 two-door coupe, shown in Glacier Blue Crystal Coat/Nightwatch Blue two-tone with Dark Blue landau roof.

Both of these features lend themselves to a personal form of driving that gives you the feeling...and the reality...of complete control at all times.

There are good reasons for Dodge 400's surprising economy. There is a new Chrysler-built standard five-speed manual transaxle that provides an overdrive fifth gear to save fuel on long distance drives. It also provides a lower gear ratio, less noise at highway speeds, and a smooth shift. Then there is the carefully built and meticulously tested transverse-mounted 2.2-liter Trans-Four engine, specifically designed for front-wheel drive performance.

Dodge 400 coupe's pleasant ride starts off as you sit back comfortably on the standard vinyl bucket seating with center console. Or you can select the optional cloth-and-vinyl bench seat with center armrest. Your driving experience begins when you shift the standard five-speed manual transaxle into gear. On the road, tuned suspension takes over. A front Iso-Strut independent suspension/rear coil system and standard steel-belted radial tires help smooth the ride.

Dodge 400's aerodynamic styling allows it to hug the road for precise handling. It also contributes to its excellent efficiency. Dodge 400 can cruise at 50 miles per hour while using only 13.5 of its 94 total horsepower.

Quality is another important factor for you to consider. Chrysler Corporation feels so confident about Dodge 400's quality that upon expiration of the normal 12-month/12,000-mile new vehicle limited warranty, limited warranty coverage is extended on power train components, including engine, transaxle, and axle—plus outer panel rust-through protection—to five years/50,000 miles, (whichever occurs first).

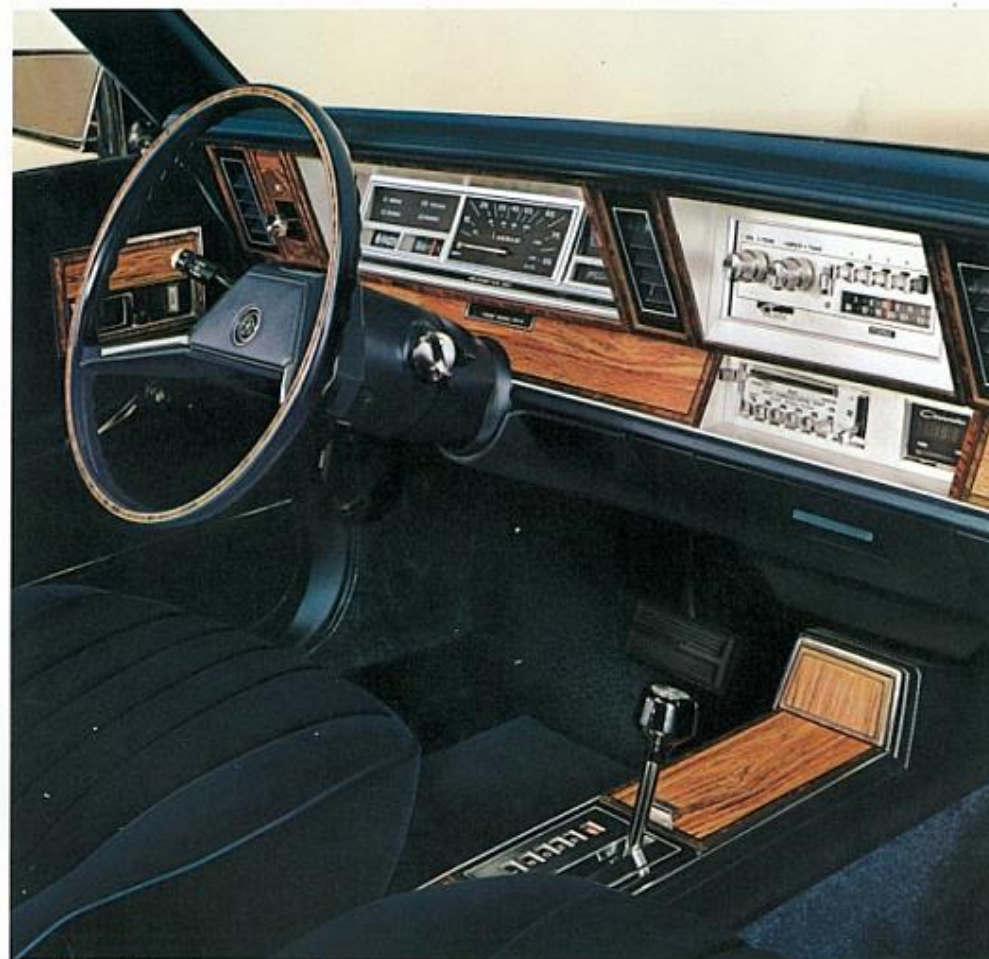
A deductible applies.  
See your dealer for details.

**The thrill of the road  
is again at your fingertips.**

Go ahead. Wrap your hands around the luxury steering wheel. Turn the key and bring Dodge 400 to life. The new optional Electronic Voice Alert System will tell you softly that all systems are "OK," or it will inform you of a door ajar, or low fuel, or eight other conditions of your car.

Notice the visibility of all instrumentation and the convenience of all appointments.

You'll appreciate the handsome two-tone woodtone treatment on the lower instrument panel. Reach down to the standard five-speed manual transaxle lever that's positioned as an integral part of the standard center console and armrest. Or you can select an optional TorqueFlite automatic transaxle to add convenience to your driving experience. Put it in gear. Now! Drive it for all it's worth.



Dodge 400 two-door standard instrument panel in Blue.

**Dodge 400 Four-Door Sedan.**  
**A full measure**  
**of driving pleasure.**

And you thought luxury, convenience, roominess, and the pleasure of driving were things of the past. Think again. The Dodge 400 four-door sedan brings them all back. Its sporty elegance is quietly evident everywhere. The full padded vinyl roof is accented with padded vinyl extensions that flow into the upper rear doors. Standard on the four-door sedan.

The appointments are distinctively appealing. There are deluxe wheel covers, outside rearview mirrors, bumper protective

rub strips, rectangular halogen headlamps for a whiter high beam, and bright molding seemingly everywhere. All standard.

Power steering, power brakes, and steel-belted radial tires are there to help give you an uncompromisingly fine driving experience. They, too, are standard.

The standard three-speed TorqueFlite automatic transaxle has wide ratio first and second gears to help provide quick accel-

eration and contribute to Dodge 400's efficient use of fuel.

Hard to ignore is Dodge 400's interior. The standard Kimberley cloth bench seat has a center armrest to add comfort to your driving experience. Or you can choose the optional vinyl or cloth high-back reclining bucket seat interior.

Like all Dodge 400s, the four-door sedan is constructed with the extensive use of galvanized sheet metal, one of the best

known methods of corrosion protection, and pre-coated steel in critical areas. Chrysler's 5/50 outer panel rust-through limited warranty helps assure you of quality corrosion protection.

Dodge 400 four-door sedan is not only distinctively attractive, it is above all a driving experience. It's an experience we would like you to have.



Dodge 400 four-door sedan, shown above in Sable Brown with Sable Brown full vinyl roof.



Standard four-door interior with Sable Brown cloth bench seat with center armrest.

## Dodge 400 Convertible. Grace, efficiency, and a whole new range of driving excitement.

Dodge recently reduced the base sticker price of the Dodge 400 convertible. As a result, the standard equipment listed below is now optional, at extra cost.

- 14-inch steel-belted radial wide white sidewall tires (13-inch glass-belted radial black sidewall tires are now standard)
- Deluxe wheel covers
- Power rack-and-pinion steering

Dodge electrified the automotive world last year when it announced the return of the American convertible to the American road.

For 1983, the Dodge 400 convertible continues the technical engineering sophistication offered in its 1982 midyear introduction. It provides the precise handling of rack-and-pinion power steering, a firm, comfortable ride resulting from Iso-Strut front suspension, and the excellent traction and directional stability of front-wheel drive.

There are standard features you'd expect to cost extra. Automatic transaxle, power steering, power brakes, 335-ampere maintenance-free battery, electronic digital clock, center console, AM radio, color-keyed dual remote control exterior mirrors, and a tailored top boot color-keyed to the interior.

But most of all, the Dodge 400 convertible exemplifies Dodge's dedication to high quality. This quality is immediately obvious in the double-weave cotton and three-ply vinyl-coated top that is both tough and attractive. The Ultra-Lite rear window gives clear visibility and can be lowered for rear ventilation. A control button on the console allows you to raise and lower the top electrically, and a vinyl convertible top boot conceals and protects the convertible top when the top is down.

Friends will want to share your new Dodge 400 convertible driving experience with you. You'll find it is equipped for up to four passengers. And you'll find 13 cubic feet of trunk space, too.

Enjoy the Dodge 400 convertible excitement. That's what this fine automobile was made for. Dodge 400 convertible can make it all happen for you.

## Driving Excellence Engineered In.

Sophisticated technology and front-wheel drive expertise make all Dodge 400s truly personal driving machines.

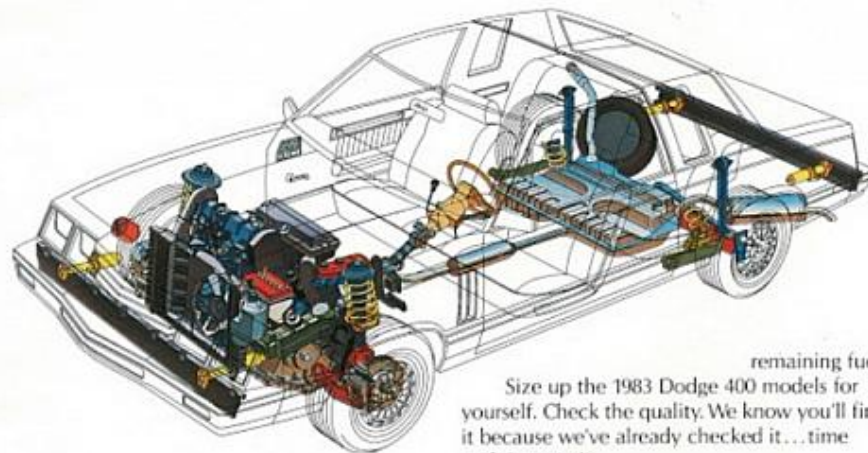
It begins with the computers that analyze all materials and components to make sure they meet Dodge's exacting standards. Dodge 400's unitized body is constructed scientifically with the use of highly advanced computer-controlled automated welders for consistent welds that are uniformly made to quality standards.

Dodge's 5/50 outer panel rust-through protection is made possible in part by extensive use of galvanized sheet metal or zincrometal panels. A seven-step dip-and-spray process is also used on every body assembly.

adjusting. A new transaxle, standard on two-door coupes for 1983, has five speeds for greater fuel economy and a more precise application of engine power to driving conditions.

Also new for 1983 is the optional Electronic Voice Alert system. The system employs 10 input sensors to verbally report to you when something important needs attention.

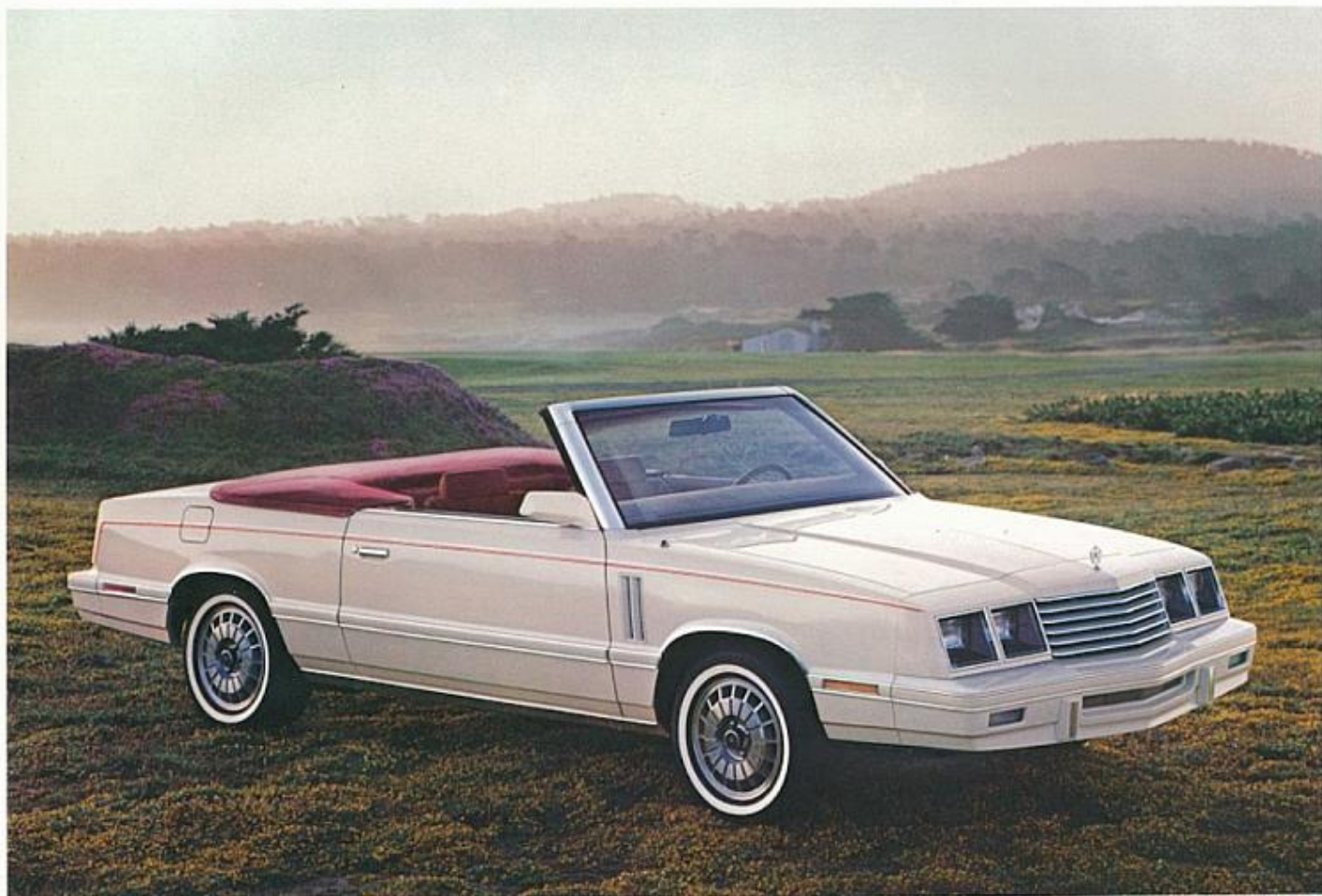
Another option from Dodge's space age engineering is the Electronic Travel Computer Cluster. This provides you with six different trip functions while enroute. These computerized functions range from average miles per hour road speed for trip to driving range with



remaining fuel. Size up the 1983 Dodge 400 models for yourself. Check the quality. We know you'll find it because we've already checked it...time and time again.

Quality is built into Chrysler's 2.2-liter four-cylinder overhead cam engine, too. Weighing only 293.8 pounds to help contribute to better fuel efficiency, it has long-life components such as chrome valve stems, alloy metal valve seats, and moly-faced compression rings.

Brakes have been improved for 1983. The front disc brakes have increased disc pad area and upgraded brake sizes that provide optimum lining life. Rear drum brakes are now self-



Dodge 400 convertible, in Pearl White with reclining Red/White all-vinyl bucket seats.



## Dodge 400 Options.

Here are just a few of the many options available on Dodge 400 models.

**The Electronic Voice Alert System that reminds you vocally of the following: fasten seat belts, door ajar, parking brake on, low engine oil pressure, engine overheating, electrical system malfunction, low fuel, low washer fluid, key in ignition, headlamps on, and all systems "OK!" (Not pictured.)**

**A. Power Windows/Door Locks.** Controls the locking of all doors, and raising and lowering of all windows.

**B. Air Conditioning with new Bi-Level Ventilation.** New bi-level ventilation improves the flow of cool, clean air throughout the passenger compartment (see engine cooling option on page 13).

**C. Automatic Speed Control.** Makes highway driving a breeze and will save gas on long drives. Control is conveniently mounted on the standard steering column multifunction control lever.

**D. Electronic Travel Computer Cluster.** Digital display that supplies pertinent trip data at the touch of a finger. Includes fuel range and present mpg rate, trip odometer, average speed since reset, date, time, and a U.S./metric unit selector.

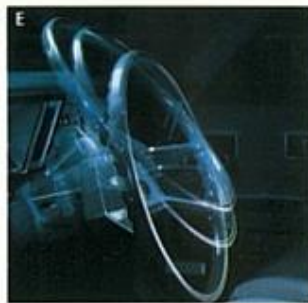
**E. Tilt Steering Column.** Gives you six positions to choose from for added comfort.

**F. Electronically Tuned Reception AM/FM Stereo Radio with Cassette Tape Player.** Eliminates drifting, fading, and distortion. Also combines with solid state tuning and a quartz crystal readout to increase tuning accuracy. Available with or without cassette tape player with Dolby® sound.

**G. Rear Window Defroster.** Helps eliminate the need for scraping snow and ice. Reduces driving hazards caused by poor rear vision.

**H. Power Remote Mirrors.** Remote controlled power lever to adjust outside left and convex right outside mirrors. (Not available on convertible.)

\*Dolby is a trademark of Dolby Laboratories.



## Standard Features

	400 Two-Door	400 Four-Door	400 Convertible
ALTERNATOR—40-amp	S	S	S
BATTERY—335-amp (maintenance-free)	S	S	S
BATTERY TEST INDICATOR	S	S	S
BRAKES—Power, dual diagonal; disc front; self-adjusting drum rear	S	S	S
BUMPER RUB STRIPS—Color-keyed	S	S	S
BUMPERS—Energy-absorbing	S	S	S
CARBURETOR—Electronic feedback (available with 2.2-liter engine only)	S	S	S
CARPETING—Passenger compartment	S	S	S
CHIMES/TONES—Warning: seat belt, headlamps on, key in ignition	S	S	S
CIGARETTE LIGHTER	S	S	S
CLOCK—Electronic digital	S	S	S
COMPUTER—Combustion: electronic	S	S	S
CONSOLE—With center armrest	S	E	S
CONVERTIBLE TOP—Power: hydraulic	NA	NA	S
COOLANT OVERFLOW RESERVOIR	S	S	S
ELECTRONIC IGNITION and VOLTAGE REGULATOR	S	S	S
ENGINE—Four-cylinder 2.2-liter trim-4	S	S	S
ENGINE COOLING FAN—Electric	S	S	S
HEADLAMPS—Halogen, high/low beam; rectangular	S	S	S
HEADLINER—Cloth covered	S	S	NA
HOOD—Counterbalanced	S	S	S
HOOD ORNAMENT—Pentastar	S	S	S
HOOD RELEASE—Inside	S	S	S
HORNS—Dual	S	S	S
INSULATION—Body sound: special	S	S	S
LIGHT ALERT GROUP—Washer fluid level warning, door ajar warning, fuel level warning, trunk/liftgate warning	S	S	S
LIGHTS—Ash receiver, courtesy (door-mounted), dome, glove box, ignition switch (with time delay), parking brake warning, side marker with reflectors, trunk, under-hood (dome light NA on convertible)	S	S	S
LOCK—Glove box	S	S	S
LOCK COVER—Deck lid	S	S	S
MIRROR—Inside: rearview, day/night	S	S	S
MIRROR—Inside: visor vanity, non-illuminated	NA	NA	S
MIRRORS—Outside dual manual: chrome	S	S	NA
MIRRORS—Outside dual remote: chrome	E	E	NA
MIRRORS—Outside dual remote: color-keyed	NA	NA	S
MOLDING—Vinyl roof surround: color-keyed	S	S	NA
MOLDINGS—Bright: belt, body-side with vinyl inserts (integral side marker light and partial wheel opening), deck lid, windshield, drip rail, and upper door frame (NA on convertible)	S	S	S
RADIO—AM (may be deleted for credit on factory orders)	S	S	S
ROOF—Full: padded vinyl	NA	S	NA
ROOF—Landau: padded vinyl (two-door only)	S	NA	NA
SEAT—Center armrest bench: luxurious cloth with carpeted lower door trim panels and cloth inserts	E	S	NA
SEAT—Rear passenger: convertible	NA	NA	S
SEATS—Bucket: vinyl with carpeted lower door trim panels and center armrest	S	E	S
SPARE TIRE—Compact: high-pressure	S	S	S
STEERING—Power: rack-and-pinion	S	S	S
STEERING WHEEL—Luxury, two-spoke: color-keyed	S	S	S
TIRES—P185/70R14 steel-belted radial wide white sidewall	S	S	S
TOP—Convertible: three-ply vinyl-coated black inner, vinyl boot with concealed fasteners	NA	NA	S
TRANSAXLE—Automatic: three-speed TorqueFlite	E	S	S
TRANSAXLE—Manual: five-speed	S	NA	NA
TRUNK CARPET	S	S	S
VENTILATION SYSTEM—Upper level: forced (four outlets)	S	S	S
WHEEL COVERS—Deluxe	S	S	S
WINDOW—Convertible rear: zip down; heavy-duty brass top zipper; weather-seal sides	NA	NA	S
WINDSHIELD WIPERS—Two-speed with electric washers: concealed	S	S	S

S—Standard. NA—Not available. E—Extra cost.

## Optional Equipment

Certain models, packages, and options are subject to specific restrictions, requirements, or late availability. Consult your dealer for current ordering information.

- Air conditioning—See engine cooling
- Armrest—Freestanding (std. on convertible)
- Battery—500-amp Long-Life (maintenance-free)
- Bumper Guards—Front and rear
- Console—Bucket seats required
- Defroster\*—Rear window: electrically heated (required on all sedans registered in New York state)
- Emissions Controls—California: required at extra cost on all vehicles registered in California
- Emissions Controls—High-Altitude
- Engine—2.6-liter Mitsubishi (automatic transaxle required at extra cost)
- Engine cooling†—Recommended with vehicles to be equipped with field-installed air conditioning (see your dealer for details)
- Glass—Clear: all except tinted rear window; Glass—Tinted (std. on convertible, except rear window)
- Lamp—Dome/reading (not available on convertible)
- Lamps—Cornering
- Mats—Floor, front and rear: color-keyed (front only on convertible)
- Mirror—Illuminated visor vanity: right‡
- Mirrors—Outside dual remote control: chrome
- Moldings—Door edge protective
- Moldings—Sill
- Power—Deck lid release, door locks, left bucket or bench seat, windows
- Radio—AM/FM stereo\*, electronically tuned
- Radio—AM/FM stereo\*, electronically tuned with cassette player and Dolby§ system
- Radio—AM/FM stereo\*, manually tuned
- Radio—Delete for credit (factory orders only)
- Speaker Package—Premium: electronically tuned radios
- Speaker Package—Premium: manually tuned radios‡
- Spare Tire—Conventional
- Speed Control—Automatic (deluxe windshield wipers required)
- Steering Column—Tilt (deluxe windshield wipers required)
- Steering Wheel—Luxury two-spoke: leather wrapped
- Steering Wheel—Sport
- Suspension—Sport handling
- Transaxle—TorqueFlite automatic: wide-ratio three-speed
- Trunk Dress-up
- Undercoating
- Vinyl Coating—Lower body-side protective
- Wheel Covers—Cast aluminum: 14-inch (four)
- Wheel Covers—Wire: 14-inch (four)
- Windshield Wipers—Deluxe intermittent

\*Includes 370-amp/hr maintenance-free battery.  
†Not available with air conditioning.  
‡Not available on convertible models.  
§Dolby is a trademark of Dolby Laboratories.

## Optional Packages

**Exterior Appearance Package** Package includes:  
• Two-tone paint (four color combinations)  
• Body-side tape stripes (three colors are available)

**Roadability Package** Package includes:  
• Sport/handling suspension: includes larger diameter sway bars, front and rear; higher control shock absorbers, front and rear; firm-feel power steering with quick ratio feature; special overall top gear ratio transaxle  
• P185/70R14 steel-belted radial Goodyear Eagle GT performance tires

## Interiors



**Standard 400 coupe and convertible interior. Optional on four-door models.** Low-back vinyl bucket seats with adjustable head restraints and dual seatback recliners. The door trim panel features convenient pull strap and elongated armrest. Available in Red/White (on convertibles only), Silver, Red, Beige, Brown.\*



**Standard 400 four-door model interior. Optional on two-door coupe model.** Center armrest Kimberley cloth bench seat. The door trim panel features convenient pull strap and elongated armrest. Available in Blue, Silver, Red, Beige, Brown.\*



**Optional on 400 two-door coupe and four-door sedan. Not available on convertible models.** These high-back cloth bucket seats feature integral head restraints and driver and passenger seatback recliners. The door trim panel has the same features as standard door trim panel. Available in Blue, Silver, Red, Beige, Brown.\*

\*Certain colors are available on specific models only. See your dealer for complete details.

## Dodge for 1983



COLT



CHALLENGER



OMNI



CHARGER



ARIES



DODGE 600



MIRADA



DIPLOMAT



RAM 50



RAMPAGE



RAM WAGON



RAMCHARGER

## Dodge 400 Exterior Colors



Black

Crimson Red



Glacier Blue Metallic Crystal Coat\*

Silver Metallic Crystal Coat\*



Nightwatch Blue\*

Beige Metallic Crystal Coat



Pearl White

Charcoal Gray Metallic\*



Sable Brown

Two-Tone Paint Package Two-Door Models



Charcoal Gray Metallic/Burnished Silver Metallic



Black/Burnished Silver Metallic



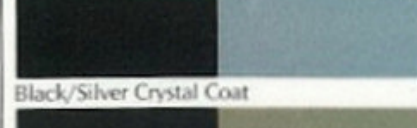
Nightwatch Blue/Light Blue Metallic



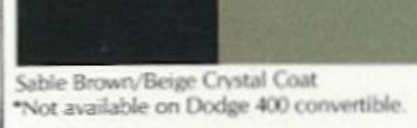
Sable Brown/Beige Metallic Four-Door Models



Nightwatch Blue/Glacier Blue Crystal Coat



Black/Silver Crystal Coat



Sable Brown/Beige Crystal Coat

\*Not available on Dodge 400 convertible.

## Engines And Transaxles

Type	Displacement	Bore & Stroke	Compression Ratio	Horsepower SAE Net	Torque @ RPM	Transaxle Availability
Federal/California 4-cyl OHC*	2.2-liter (135 CID)	3.44 x 3.62	8.5:1	94 hp @ 4,800	117 lb-ft @ 2,400	S—Man. (2.57 OTGR) <sup>†</sup> O—Auto. (2.78 OTGR) <sup>†</sup>
Federal/California 4-cyl OHC	2.6-liter (156 CID)	3.59 x 3.86	8.2:1	93 hp @ 4,500	132 lb-ft @ 2,500	S—Auto. (3.02 OTGR) <sup>†</sup>

\*Not available in high altitude areas.

<sup>†</sup>Overall top gear ratio.

<sup>‡</sup>Built by Mitsubishi Motors Corporation.

## Standard Safety Features

- Safety-Rim wheels
- Combination lap-shoulder belts for the driver and right front passenger, and lap belts for all other passengers
- Seat belt reminder system
- Energy-absorbing steering column or steering wheel
- Dual braking system with separate brake fluid reservoirs in the master cylinder
- Brake fluid pressure loss warning light (also serves as indicator when parking brake is applied)
- Hazard-warning flasher system
- Turn signals with lane-change feature
- Backup lights
- Energy-absorbing instrument panel and sun visors
- Front seat head restraints
- Energy-absorbing front seatbacks
- Inside and outside rearview mirrors
- Side marker lights and reflectors
- Seatback latches on folding front seats
- Fade-resistant front disc brakes
- Electric windshield washers and wipers
- Ignition and steering column lock
- Anti-theft trunk lock
- Headlamp and wiper circuit breakers with automatic reset
- Key-left-in-ignition warning
- Non-override door locks (except driver's door)
- Resilient window crank knobs
- Side door beams
- Dual throttle return springs
- Interlocking door latches
- Recessed inside door release handles
- Rotary glove box latch
- Reinforced windshield header and roof (not available on convertible)
- Glare reduction measures for windshield wipers, instrument panel, and steering wheel
- Double ball-joint rearview mirror mount

All product illustrations and specifications are based on authorized information. Although descriptions are believed correct at publication approval, accuracy cannot be guaranteed. Chrysler Corporation reserves the right to make changes from time to time, without notice or obligation, in prices, specifications, colors and materials, and to change or discontinue models. See your dealer for the latest information.

## Dimensions, Weight and Capacity

	400 TWO-DOOR	400 FOUR-DOOR	400 CONVERTIBLE
Length <sup>1</sup>	179.6"	179.6"	179.6"
Width	68.5"	68.5"	68.5"
Height	52.6"	53.0"	54.1"
Wheelbase	100.1"	100.1"	100.1"
Turning Diameter	34.8"	34.8"	34.8"
Curb Weight (lbs):	2,465	2,542	2,533
Tread — Front:	57.6"	57.6"	57.6"
— Rear:	57.0"	57.0"	57.0"
Cargo Capacity (est):	15.0 cu ft	15.0 cu ft	13.1 cu ft
Passenger Capacity:	6	6	4
Fuel Capacity (gal):	13	13	13

<sup>1</sup>Includes bumper guards.

## Optional 5/50 Protection Plan Coverage

Chrysler Corporation offers a 5/50 "Added Coverage" Service Contract for your new Dodge 400 which provides protection against rising service and parts costs for specified major repairs not included in the 5/50 limited warranty. Coverage starts on the specified components in the plan after your vehicle's "basic" 12-month/12,000-mile limited warranty expires on these components and continues for five years or 50,000 miles (whichever occurs first) from the vehicle's original warranty start date. A deductible applies. The plan provides an allowance for alternate transportation and towing. Ask your dealer for details.



## Consider Leasing From the Leasing Professionals

In these days of tight money and high interest rates more consumers are considering leasing as an alternative to buying. Leasing a new Dodge 400 usually eliminates large down payments and often results in lower monthly payments because you're paying only for that portion of the car life under the leasing agreement.

Leasing could be right for you, and the more you learn about it the more likely you are to consider it seriously. If leasing sounds like a sensible solution to your transportation needs, talk it over with us—your leasing professionals.

## Van Zee Motor Sales



A PRODUCT OF THE NEW CHRYSLER CORPORATION

MOPAR parts are engineered by Chrysler Corporation for use in your new Dodge 400. When replacement is necessary, be sure to specify MOPAR parts. Used by professional mechanics all over the world.