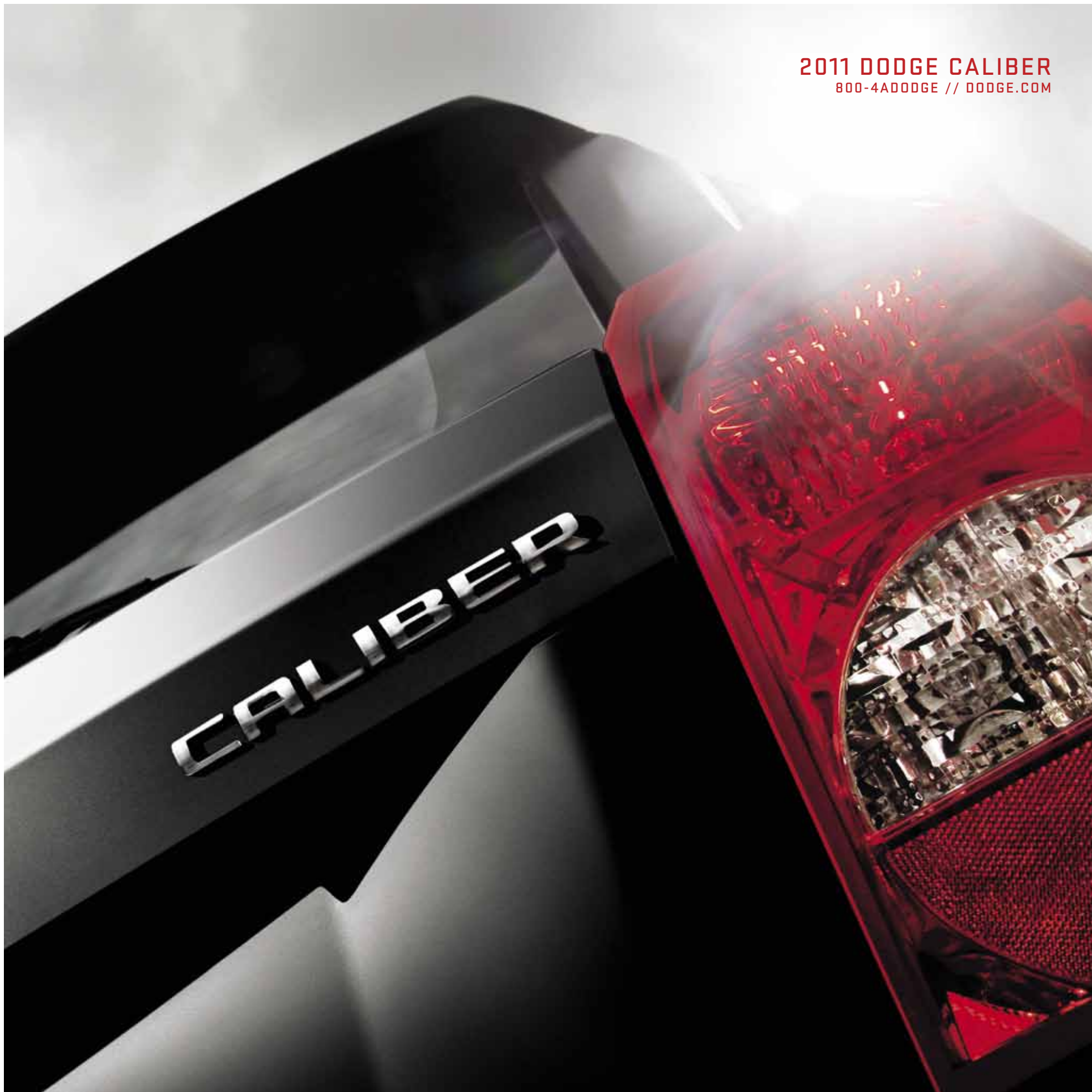


2011 DODGE CALIBER
800-4ADODGE // DODGE.COM

CALIBER



DODGE CALIBER



01. CALIBER EXPRESS. If you're looking for a well-equipped, hearty performer with a versatile interior at a great value, look no further than the Caliber Express. You'll be pleasantly surprised at all the standard features this five-door hatchback offers.

02. CALIBER MAINSTREET. For those seeking a very well-equipped, nicely appointed vehicle that's extremely versatile, Caliber Mainstreet is the model for you. This all-around performer offers a balanced combination of style, favorite features, and sporty performance.

03. CALIBER HEAT. This trim level attracts those with a passion for power and attitude. Caliber Heat is the right combination of road manners and maximum versatility for guests and gear.

04. CALIBER UPTOWN. This posh package of amenities welcomes drivers searching for the luxury of a leather-trimmed interior with chrome accents, upscale technology features, and an overall secure and versatile ride. Caliber Uptown is always dressed right for the occasion.

05. CALIBER RUSH. Whatever your age, you'll always feel young at heart with the instinctive and responsive performance found on Caliber Rush.



03



04

05

Leave it to Dodge Caliber to modernize the driving experience. Similar vehicles offer an overdone sedan experience while Caliber cranks it up with a bold five-door hatchback encounter. Oversized wraparound quad halogen headlamps, signature Dodge crosshair grille, and broad-shouldered wheel flares exude attitude with every turn. Dial up your personal driving experience with available chrome accents, fog lamps, and an aerodynamically designed rear spoiler.



Caliber Uptown in Dark Charcoal Pearl.*

*Limited availability.





Caliber Uptown with Dark Slate Gray leather-trimmed interior.

For a racier look, Caliber Heat and Caliber Rush models feature standard color-keyed inserts on premium cloth seats. A standard 60/40 split-folding rear seat and an available fold-flat front-passenger seat let you configure the best passenger-to-gear ratio for every trip. With all seats in the upright position, there's 18.5 cu ft of rear cargo room. When seats are folded flat, cargo room expands to 48 cu ft. Pump out the tunes through a 368-watt Boston Acoustics® nine-speaker sound system, including a subwoofer built into the rear cargo area, and two articulating speakers that swing down from the rear liftgate when open – standard on Caliber Uptown and Caliber Rush, available on Caliber Heat. Whether seating surfaces are detailed with premium cloth or upscale leather trim, you can be sure Caliber's attitude echoes from the inside out. Caliber Express and Caliber Mainstreet models feature standard premium cloth seats, while Caliber Heat and Caliber Rush models sport premium cloth with color-keyed inserts available in Silver, Red, or Blue. The shifter, HVAC, and radio bezels also share the same color choice. Leather trim comes standard on Caliber Uptown models and is available on Caliber Rush with stitching in either Silver, Red, or Blue. For everyone's comfort there's an available 6-way power adjustable driver's seat, heated front seats, and second-row reclining seats.



Uconnect® **STAY CONNECTED.** Outfit your Caliber with Uconnect® to help stay in touch with the people, music, and devices that matter most. It acts as the hub for your most important media – cell phone, Internet, satellite radio, navigation system, and personal devices, such as an iPod® or smartphone. The Uconnect user-friendly systems are designed to make your life easier, wherever you roam.

 **PHONE.** Talking on the phone while driving has never been easier – or more responsible. Uconnect Phone is the in-vehicle, voice-activated communication system that allows you to pair up to seven Bluetooth® compatible phones and then talk virtually hands-free. This system is also clever enough to synchronize with your phone's address book^{[1]*} – up to 1,000 entries – every time you get into your vehicle.

 **WEB.** Put the power of high-speed Internet in your vehicle with Uconnect Web.^[2] Effortlessly connect any WiFi-enabled device to the Internet at 3G broadband speeds, making your vehicle a mobile Hotspot. Passengers can use multiple devices at the same time. There's no need for cell cards or software with this unique Authentic Accessory by Mopar – it's all wireless. Subscription required. Sold separately.

 **VOICE COMMAND.** It simplifies driving by letting you keep your eyes on the road and your hands on the wheel. This smart system technology can also be trained to better recognize your voice and can understand commands in English, French, and Spanish.


 **ENTERTAINMENT.** Manage all of your media. You'll have multiple ways to access audio, including SIRIUS® Satellite Radio^[3] (your first year of service is included), a 30GB hard drive, remote USB port with audio jack and CD/DVD, Voice Command and Bluetooth Streaming Audio.

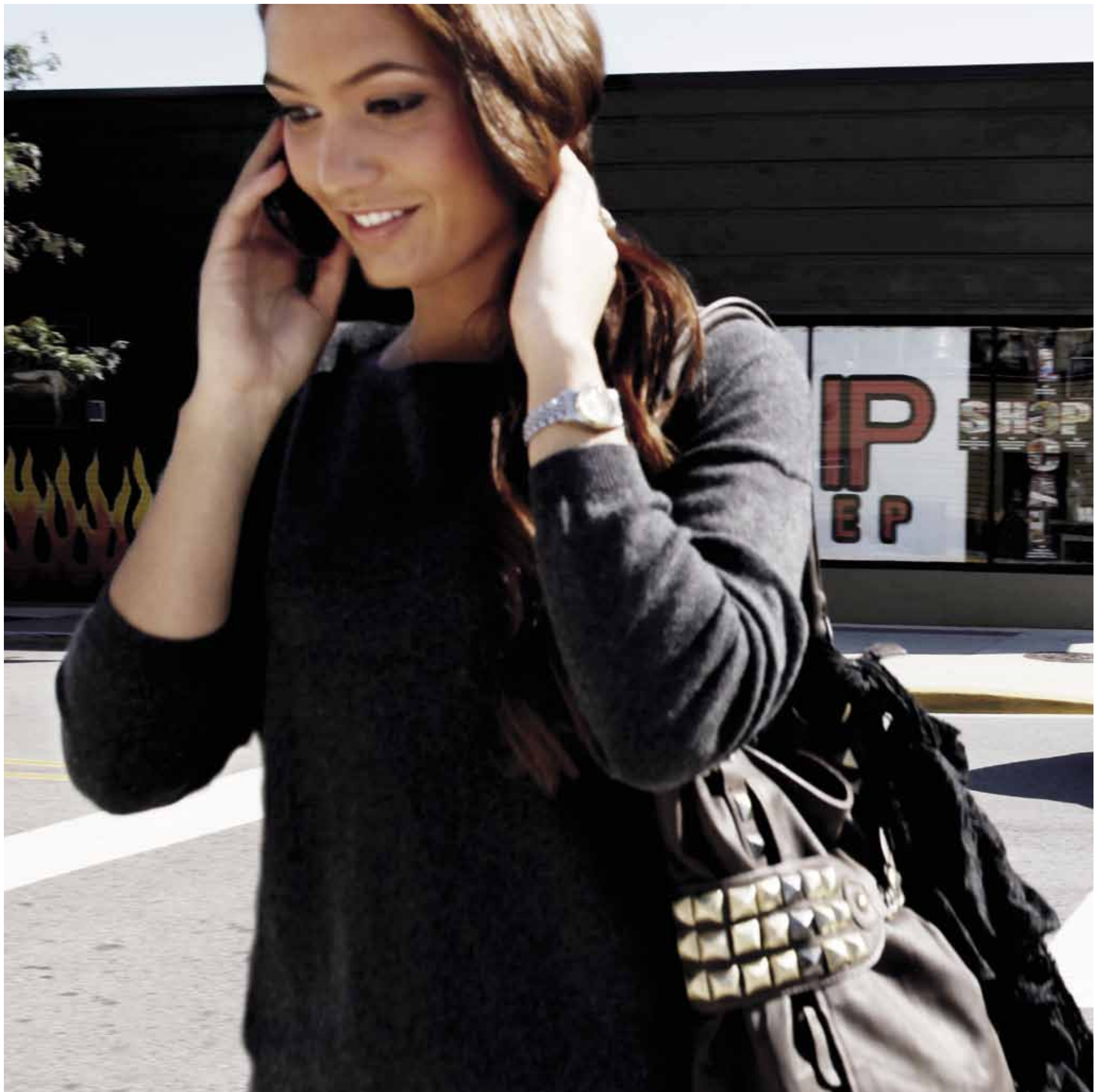
 **NAVIGATION.** Provides turn-by-turn guidance by voice and visual display. It can also locate nearby restaurants, shopping, hospitals, or points of local interest.

UCONNECT MEDIA CENTER RADIOS

AVAILABLE	430N	430	130
Caliber Rush	0	S	
Caliber Uptown	0	0	S
Caliber Heat		0†	S†
Caliber Mainstreet		0†	S†
Caliber Express			S†
SELECTED FEATURES			
LCD Display	6.5-inch Touch	6.5-inch Touch	
Optical Drive	CD/DVD/MP3	CD/DVD/MP3	CD/MP3
Navigation	Garmin®		
SIRIUS Travel Link™ ^[3]	S†		
SIRIUS Satellite Radio ^[3]	S	S	S
Storage	28GB	28GB	
Audio Jack	S	S	S
Hands-Free Voice Command of Phone	S	S	S
Bluetooth Streaming Audio	S	S	
Remote USB Port for Digital Media Storage/Players (iPod)	S	S	S

S = Standard 0 = Optional

SIRIUS  **SIRIUS TRAVEL LINK™^[3]†** brings a wealth of useful information to your fingertips including: national weather information for current and forecasted weather, fuel prices to check local gas prices, sports scores for in-game and final scores, as well as weekly schedules and local movie theater listings. *A note about this brochure: All disclaimers and disclosures can be found on page 17. †Late availability (Spring 2011).





Dodge Caliber's powertrains are a fierce combination of power and efficiency. 2.0-LITER DOHC DUAL VARIABLE VALVE TIMING (VVT) 16V I-4. The 2.0-liter engine is standard on Caliber Express, Caliber Mainstreet, Caliber Heat, and Caliber Uptown models. This power plant delivers 158 horsepower @ 6,400 rpm and 141 lb-ft of torque @ 5,000 rpm. It is paired with a standard 5-speed manual transaxle on Caliber Express and Caliber Heat, coupled with a standard CVT2 automatic transaxle on Caliber Mainstreet and Caliber Uptown. Power and fuel economy are up to speed with an EPA est. 24 city/32 hwy mpg on models equipped with the 5-speed transaxle. 2.4-LITER DOHC DUAL VARIABLE VALVE TIMING (VVT) 16V I-4. Standard on Caliber Rush and available on Caliber Uptown, it generates 172 horsepower @ 6,000 rpm and 165 lb-ft of torque @ 4,400 rpm. The 2.4-liter engine gets an EPA est. 22 city/27 hwy mpg with the CVT2 and an EPA est. 23 city/29 hwy mpg with manual transaxle.

Caliber Rush in Redline 2 Coat Pearl.

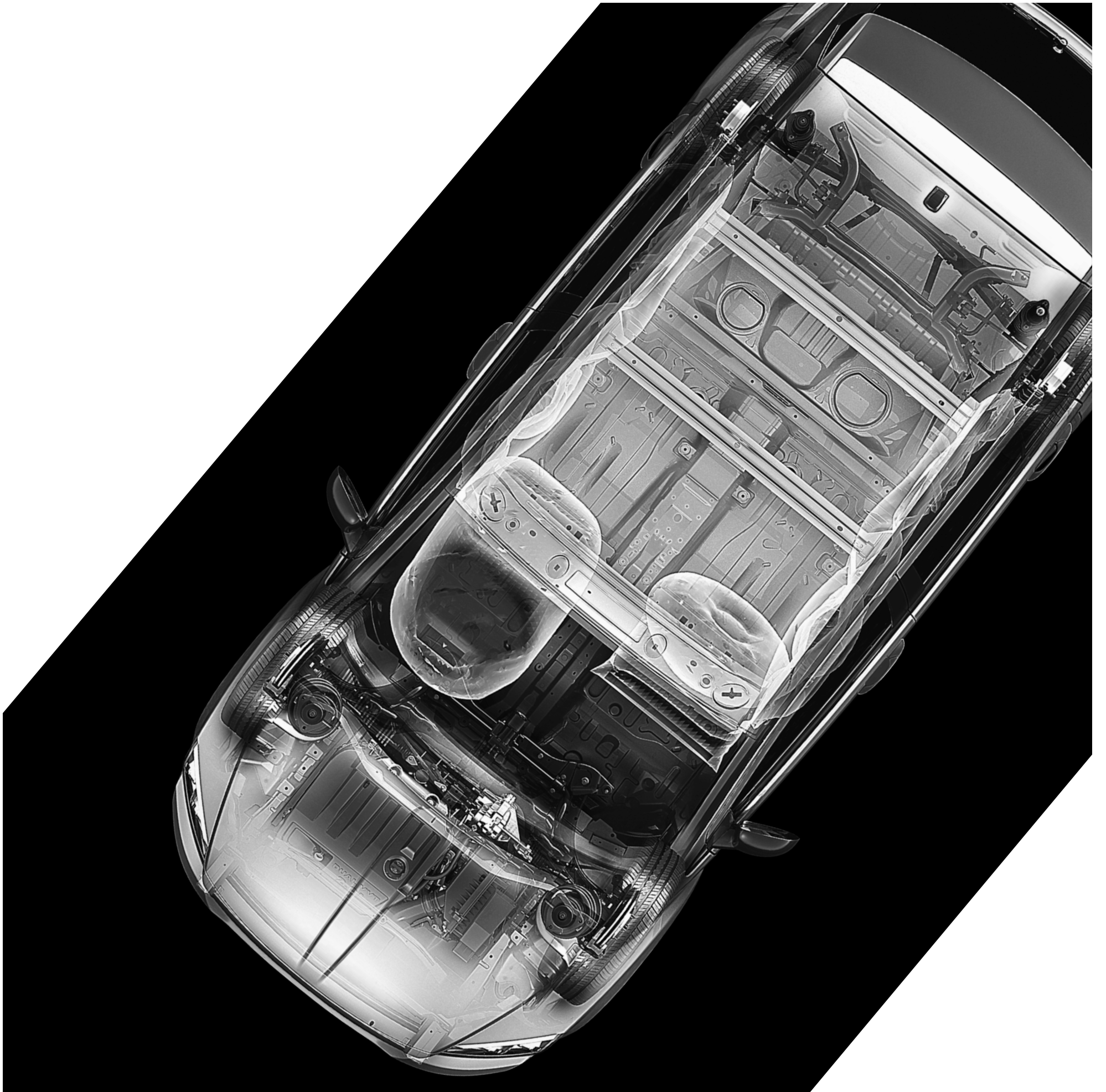
SAFETY. DESIGN.

AVAILABLE ELECTRONIC STABILITY CONTROL (ESC)^[4] In adverse conditions, the available ESC with Brake Assist works with an advanced all-speed traction control system to help the driver maintain vehicle directional stability and limit oversteering or understeering. Electronic Brake Assist detects conditions when maximum force is needed for optimum stopping power.

ANTILOCK BRAKE SYSTEM (ABS). Standard four-wheel antilock brakes afford premium stopping power from state-of-the-art electronics that provide fast system response. ABS senses and prevents wheel lockup, helping to provide steering control under extreme braking and/or slippery conditions. **AIR BAGS^[5]** Occupant protection comes from standard advanced multistage

air bags^[5] for the driver and front passenger, a knee blocker air bag^[5], supplemental side-curtain air bags^[5], and available supplemental front-seat side mounted air bags^[5] which help provide nearly instantaneous occupant protection if needed. **SENTRYKEY[®]** This immobilizer system prevents unauthorized vehicle operation by disabling the engine if the properly encoded key is not used. Operation is automatic, regardless of whether the vehicle is locked or unlocked.

HILL START ASSIST. This available feature automatically applies the brakes momentarily to help prevent rollback on hills and inclines.





When you enhance your Caliber with Authentic Dodge Accessories by Mopar, you'll make your vehicle even more outstanding.

17-INCH CHROME-PLATED ALUMINUM WHEELS. For added show on the go, this 5-spoke premium wheel is machined to match your Caliber's specifications and designed to provide a smooth, balanced ride. **BODY KIT.** The Black custom-fit front Air Dam and Black accented Side Sills aggressively complement your vehicle's natural contours and are designed and tested to retain their fit and finish. **CHROME BODYSIDE MOLDINGS.** Protect your Caliber's sheet metal from damage while picking up some good looks at the same time. **REAR SPOILER.** Not only does it provide a little aerodynamic incentive, it also attracts approving looks with its uncompromising presence. And it's prepainted with a durable Clear Coat finish to match select body colors. **CHROME FUEL FILLER DOOR.** It's the go-to accessory that brightly complements every body color. The uniquely sculpted one-piece design replaces your existing fuel door with a seamless fit.

For the full range of accessories, visit mopar.com

AUTHENTIC DODGE ACCESSORIES





CALIBER EXPRESS

STANDARD FEATURES: 120-amp alternator; 525-amp maintenance-free battery; Antilock brakes, 5-speed manual transaxle; Black door handles; 2.0L I-4 DOHC 16V Dual VVT engine; Solar-Control glass; Remote keyless entry; Variable intermittent windshield wipers; Rear window wiper/washer; Halogen headlamps; Rear spoiler; Body-color grille; 13.6-gallon fuel tank; Normal-duty suspension; 15-inch painted wheel covers; Power heated mirrors. **OPTIONAL FEATURES:** Smoker's Group; 17-inch Aluminum Wheel Group; Engine block heater.



CALIBER MAINSTREET

STANDARD FEATURES: Has all of the Caliber Express standard features plus – Electronic Stability Control (ESC);^[4] Continuously variable automatic transmission (CVT); Tachometer; Bright grille; Body-color door handles; Fog lamps; Firm-feel power steering; Touring suspension; 17-inch painted aluminum wheels. **OPTIONAL FEATURES:** Security Group; Driver Convenience Group; Power sunroof; Smoker's Group; Engine block heater; Media Center 430.



CALIBER HEAT

STANDARD FEATURES: Has all of the Caliber Mainstreet standard features plus – Sport suspension; Antilock 4-wheel disc brakes; 18-inch ultra-brite machined cast aluminum wheels. **OPTIONAL FEATURES:** Security Group; Driver Convenience Group; Power sunroof; Smoker's Group; Premium Sound Group.



CALIBER UPTOWN

STANDARD FEATURES: Has all of the Caliber Mainstreet standard features plus – Antilock 4-wheel disc brakes. **OPTIONAL FEATURES:** 2.4L I-4 DOHC 16V Dual VVT engine; Security Group; Driver Convenience Group; Power sunroof; Smoker's Group; Engine block heater; Media Center 430; Media Center 430N; 18-inch chrome-clad aluminum wheels.



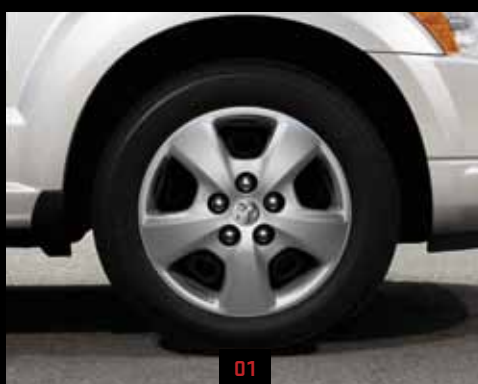
CALIBER RUSH

STANDARD FEATURES: Has all of the Caliber Heat standard features plus – 2.4L I-4 DOHC 16V Dual VVT engine; Unique body-color fascias; Bright exhaust tips; Chrome bodyside molding; SRT[®] inspired liftgate spoiler; 18-inch chrome-clad aluminum wheels. **OPTIONAL FEATURES:** Security Group; Driver Convenience Group; Power sunroof; Leather Interior Group; Smoker's Group; Engine block heater; Media Center 430N.

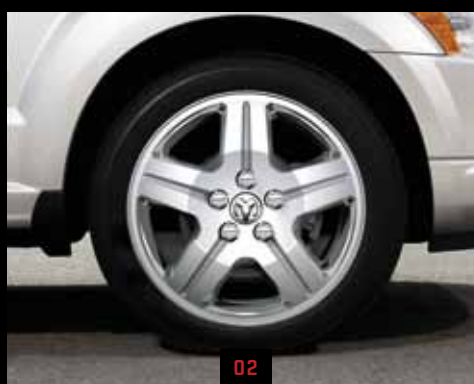
BRIGHT SILVER METALLIC BLACKBERRY PEARL BRIGHT WHITE MANGO TANGO PEARL BRILLIANT BLACK CRYSTAL PEARL REDLINE 2 COAT PEARL DARK CHARCOAL PEARL* TUNGSTEN METALLIC*

All models available in all colors.

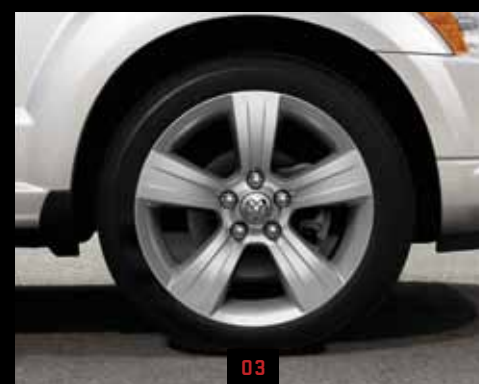
*Late availability. *Limited availability



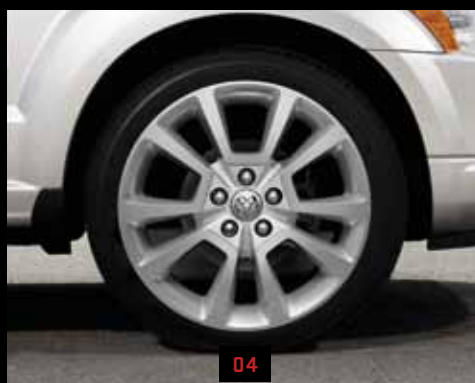
01



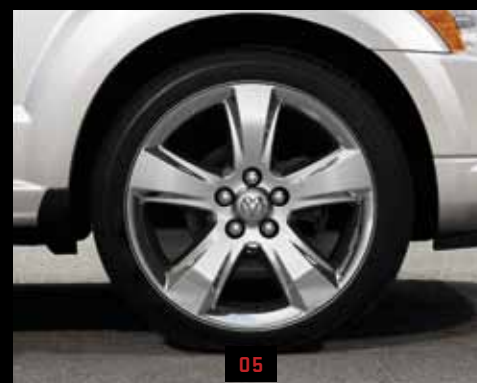
02



03



04



05

CALIBER WHEELS

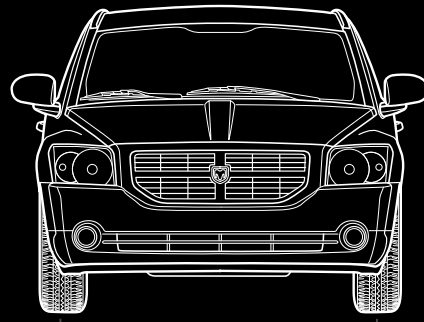
01. 15-inch painted wheel covers (Standard on Caliber Express). 02. 17-inch aluminum wheels (Available on Caliber Express). 03. 17-inch painted aluminum wheels (Standard on Caliber Mainstreet and Caliber Uptown). 04. 18-inch polished aluminum wheels (Standard on Caliber Heat). 05. 18-inch chrome-clad aluminum wheels (Standard on Caliber Rush, Available on Caliber Uptown).



DODGE.COM/LIFE // Check out an extensive line of gifts and gear for the Dodge enthusiast. From authentic apparel to die-cast replica cars for the collector as well as electronics and office supplies, all lifestyle items are as bold as your Dodge vehicle.

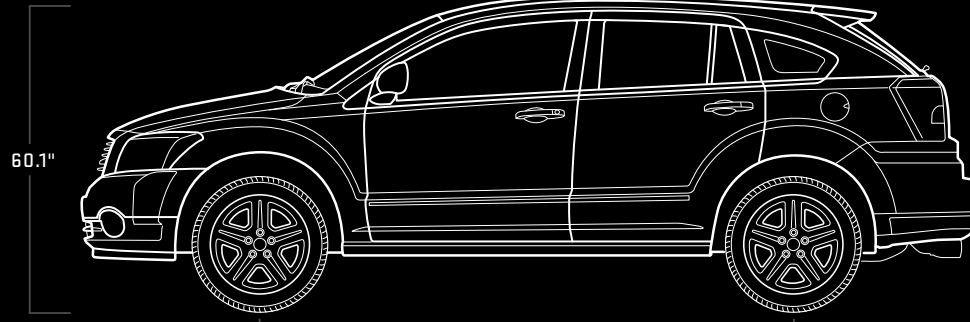
These products are for placement only; refer to dodge.com/life for current product availability.

SPECIFICATIONS



59.8"

68.8"



60.1"

103.7"

173.8"



CALIBER EXPRESS

CALIBER EXPRESS INCLUDES //

Front belt shoulder-height adjuster; Supplemental side-curtain air bags^[5]; Active front head restraints^[6]; Rear 60/40 folding seat; Advanced multistage front air bags^[5]; Full-length floor console; Fold-flat load floor; Sliding armrest; Premium cloth bucket seats; Sliding sun visor with mirror; Sentry Key[®] theft deterrent system; Auto-dimming rearview mirror; Air conditioning with Chill Zone[®] Beverage Storage System; Luxury front and rear floor mats; Rear window defroster; 12V auxiliary power outlet; 115V auxiliary power outlet for mobile devices; Illuminated cup holders; Outside temperature display; Satin Silver instrument panel bezels; Power windows with driver one-touch down; Speed-sensitive power locks; 120-mph speedometer; Cargo compartment lamp; Four speakers; SIRIUS[®] Satellite Radio^[3]; Media Center 130 CD/MP3; Tilt steering column; Soft tonneau cover; Speed control; Tire Pressure Monitoring Warning Lamp

CALIBER EXPRESS FABRICS //

A-B) Cubic cloth/Duet cloth in Dark Slate Gray
C-D) Cubic cloth/Duet cloth in Medium Graystone

A

B

C

D



CALIBER MAINSTREET

CALIBER MAINSTREET //

Has all of the Caliber Express standard features plus – Rear 60/40 folding, reclining and fold-flat seats; Front-passenger fold-flat seat; Passenger-assist handles; Removable/rechargeable trouble lamp; Six-way power driver's seat; Map/dome reading lamps

CALIBER MAINSTREET FABRICS //

E-F) Cubic cloth/Duet cloth in Dark Slate Gray
G-H) Cubic cloth/Duet cloth in Medium Graystone

E

F

G

H



CALIBER HEAT

CALIBER HEAT //

Has all of the Caliber Mainstreet standard features plus – Instrument panel bezels with color-keyed inserts; Premium cloth bucket seats with Silver, Red, or Blue inserts

CALIBER HEAT FABRICS //

I-J) Cubic cloth/Duet cloth in Dark Slate Gray with color-keyed inserts in Red

K-L) Cubic cloth/Duet cloth in Dark Slate Gray with color-keyed inserts in Blue

M-N) Cubic cloth/Duet cloth in Dark Slate Gray with color-keyed inserts in Silver

I

J

K

L

M

N



CALIBER UPTOWN

CALIBER UPTOWN //

Has all of the Caliber Mainstreet standard features plus – Leather-trimmed bucket seats; Automatic temperature control air conditioning; Manual driver's lumbar adjustment; Heated front seats; 9 Boston Acoustics® speakers including 2 articulating liftgate speakers and subwoofer; Leather-wrapped steering wheel with audio controls; Uconnect Voice Command

CALIBER UPTOWN FABRICS //

O-P) Radar perforated leather inserts/Sutton vinyl trim in Dark Slate Gray

Q-R) Radar perforated leather inserts/Sutton vinyl trim in Medium Graystone

O

P

Q

R



CALIBER RUSH

CALIBER RUSH //

Has all of the Caliber Heat standard features plus – Automatic temperature control air conditioning; Media Center 430; Leather-wrapped parking brake handle; 6-way power driver's seat; 9 Boston Acoustics speakers including 2 articulating liftgate speakers and subwoofer; Leather-wrapped steering wheel

CALIBER RUSH FABRICS //

S-T) Cubic cloth/Duet cloth in Dark Slate Gray with color-keyed inserts in Red

S-U) Cubic cloth/Duet cloth in Dark Slate Gray with color-keyed inserts in Blue

S-V) Cubic cloth/Duet cloth in Dark Slate Gray with color-keyed inserts in Silver

W-X) Available Radar perforated leather inserts/Sutton vinyl trim in Dark Slate Gray

S

T

U

V

W

X

DO NOT REMOVE

Join fellow Dodge enthusiasts and tell your story by posting comments, participating in discussions, and sharing your photos and videos. Join our community on Facebook, follow us on Twitter, and check us out on YouTube.



5 YEAR / 100,000 MILE
POWERTRAIN WARRANTY

DODGE LIFE

Service Contracts



@connect

SIRIUS
SATELLITE RADIO
THE BEST RADIO ON RADIO

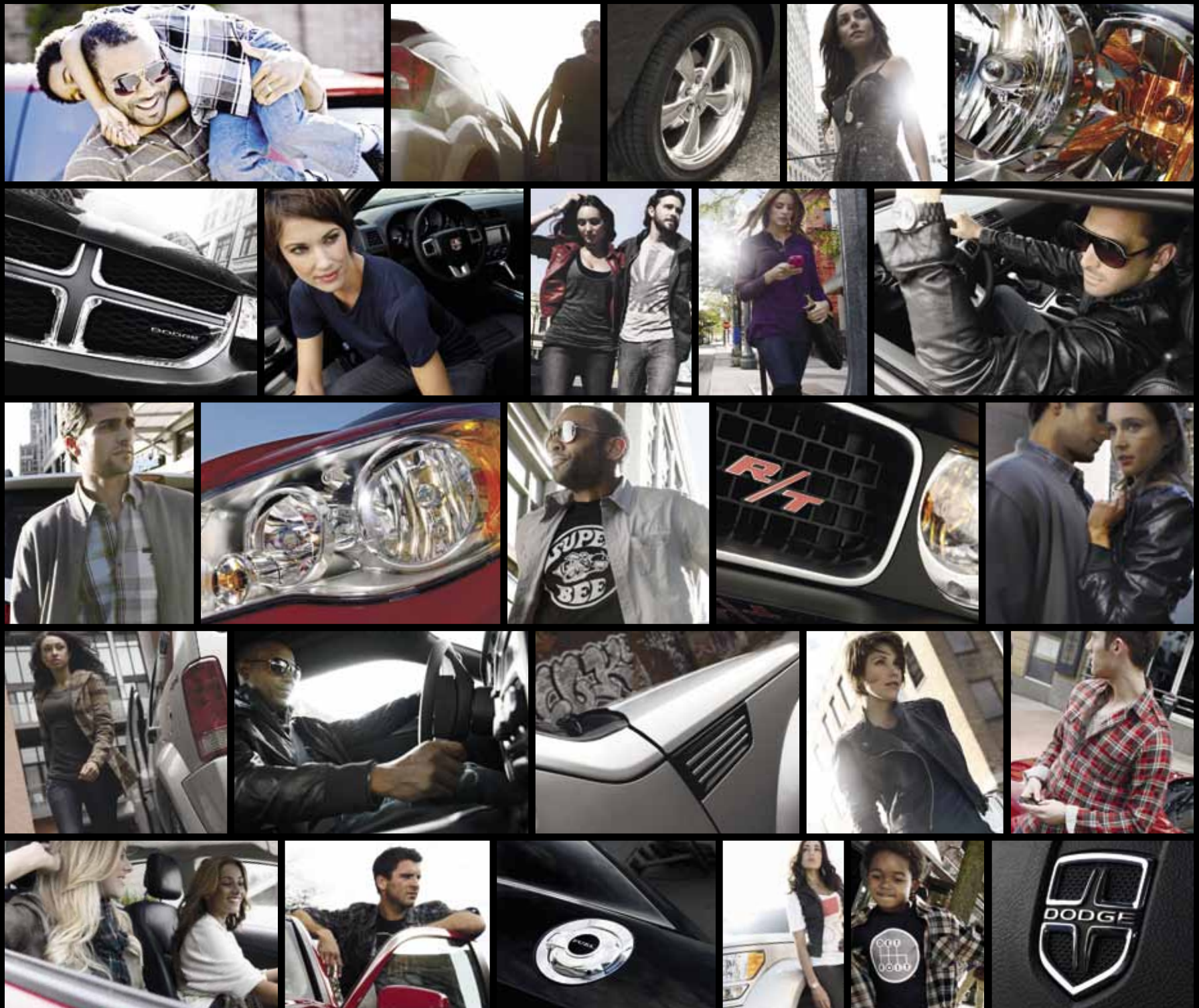
AUTOMOBILITY
PROGRAM
CHRYSLER GROUP LLC



¹Phone must support Bluetooth Phone Book Access Profile (PBAP). ²Uconnect Web feature is not intended for use by the driver while the vehicle is in motion. Always drive carefully. Subscription required. ³Required SIRIUS Radio, Traffic, Travel Link and Backseat TV subscriptions sold separately after trial period. Other fees and taxes will apply. SIRIUS Traffic and Travel Link available in select markets. Backseat TV subscription not available without SIRIUS Radio subscription and SIRIUS data displays and individual product availability vary by hardware equipment. SIRIUS service available only to those at least 18 years of age in the 48 contiguous U.S.A., DC and Puerto Rico (with coverage limitations), while Internet radio is also available in AK, HI, and PR. Fees and programming subject to change. Service automatically renews and you will be billed, at then current rates, unless you call 1-888-539-7474 to cancel. Subscriptions governed by SIRIUS Terms and Conditions available at sirius.com. Service available in Canada; see www.siriuscanada.ca. ⁴No system, no matter how sophisticated, can repeal the laws of physics or overcome careless driving actions. Performance is limited by available traction, which snow, ice and other conditions can affect. When the ESC warning lamp flashes, the driver needs to use less throttle and adapt speed and driving behavior to prevailing road conditions. Always drive carefully, consistent with conditions. Always wear your seat belt. ⁵The Advanced Front Air Bags in this vehicle are certified to the new U.S. federal regulations for advanced air bags. Children 12 years old and younger should always ride buckled up in a rear seat. Infants in rear-facing child restraints should never ride in the front seat of a vehicle with a passenger front air bag. All occupants should always wear their lap and shoulder belts properly. ⁶Always sit properly with the head restraint properly adjusted. Never place anything in front of the head restraint.

5-YEAR/100,000-MILE POWERTRAIN WARRANTY Transferable. See dealer for a copy of limited warranty. Includes towing to an authorized dealer. **3/36 BASIC LIMITED WARRANTY** Dodge vehicles are covered by a Chrysler Group LLC 3-year or 36,000-mile Basic Limited Warranty. See your dealer for a copy of this limited warranty. Excludes normal maintenance and wear items. Enhance your Dodge Caliber with **AUTHENTIC DODGE ACCESSORIES BY MOPAR**. They're designed specifically for your vehicle, for exceptional fit, finish and performance. Visit your dealership or mopar.com. With **UCONNECT**[®] you're always connected — to people, places, music, movies, and the Internet. **SIRIUS**[®] **SATELLITE RADIO** delivers over 130 channels, including 100% commercial-free music, sports, news, talk, entertainment, traffic and weather. Factory-installed SIRIUS Satellite Radio includes a one-year subscription. For more information, go to sirius.com. **DODGE LIFE** is a handpicked collection of items bearing the powerful Dodge name — from Motorsports apparel and collectible die-cast models to the hottest items for work and weekend fun. It's all found at dodge.com/life. **CHRYSLER GROUP LLC'S AUTOMOBILITY** program provides aftermarket reimbursement incentives on adaptive vehicle uplift equipment in order to help provide safe and reliable vehicle modifications to enhance accessibility for all people. For more information, call (800) 255-9877 or visit chryslerautomobility.com. **HONORING THOSE WHO SERVE**. Chrysler Group LLC proudly supports the members of the U.S. Armed Forces and their families. **CHRYSLER SERVICE CONTRACTS**. Chrysler Group LLC has a vested interest in your satisfaction and owner experience with your new Dodge vehicle. Chrysler Group Service Contracts offer extended service plans to help ensure that you'll enjoy your vehicle for many years down the road. For more information on comprehensive vehicle coverage, see your Dodge dealer, call (800) 442-2666, or visit dodge.com/csc.

About this catalog: Since the time of printing, some of the information you'll find in this catalog may have been updated. Ask your dealer for details. Some of the equipment shown or described throughout this catalog is available at extra cost. Specifications, descriptions, illustrative materials, and all competitive comparisons contained herein are as accurate as known at the time this publication was approved for printing. Chrysler Group LLC reserves the right to discontinue models at any time or change specifications without notice and without incurring obligation. All options are required in combination with other options. For the price of the model with the equipment you desire, or verification of specifications contained here, see your Dodge dealer. Caliber, Chill Zone, Dodge, Mopar, Uconnect, SRT and Sentry Key are registered trademarks of Chrysler Group LLC. Bluetooth is a registered trademark of Bluetooth SIG, Inc. Boston Acoustics and the Boston Acoustics logo are registered trademarks of Boston Acoustics, Inc. All rights reserved. iPod is a registered trademark of Apple, Inc. All rights reserved. SIRIUS, XM, and all related marks and logos are trademarks of SIRIUS XM Radio, Inc. and its subsidiaries. Garmin and the Garmin logo are registered trademarks of Garmin, Ltd. or its subsidiaries and are registered in one or more countries including the U.S.



DODGE 
800-4ADODGE // DODGE.COM

Dodge is a registered trademark of Chrysler Group LLC.
FORM NO. 74-383-2105_10/10 (59M)_LITHO IN U.S.A.