

09

DODGE DAKOTA



**IT IS A SINGULAR LOOK THAT MELDS MUSCLE WITH STYLE. A BEST-IN-CLASS INTERIOR THAT ACCOMMODATES EVERYTHING BUT COMPROMISE. AND AN AVAILABLE AND EXCLUSIVE V8 THAT BALANCES READY-TO-ROCK POWER WITH SMART, EFFICIENT PERFORMANCE. THE DESTINATION IS YOUR LIFE. GET THERE IN THE 2009 DODGE DAKOTA.**



Dodge Dakota TRX4 in Sunburst Orange.

**DAKOTA.** Practical versatility, bold styling, and powerful yet efficient performance. Count on five-star front and side crash test ratings, best-in-class<sup>[1]</sup> towing, horsepower, *and* standard engine — and virtual mountains of information, at [www.dodge.com/dakota](http://www.dodge.com/dakota) <sup>[1]</sup>Based on 2008 *Ward's* Small Pickup segmentation. When properly equipped. Excludes other Chrysler LLC designed vehicles and sport utility trucks.

**BEST-IN-CLASS<sup>(1)</sup> TOWING**

**AND HORSEPOWER.**



**THE 2009 DODGE DAKOTA INCLUDES THE BEST-IN-THE-BUSINESS LIFETIME POWERTRAIN LIMITED WARRANTY WITH UNLIMITED MILEAGE.**

Non-Transferable.

See dealer for a copy of Limited Warranty and details.



**Dodge Dakota Big Horn Extended Cab in Bright Silver Metallic.**

**NEW DAKOTA BIG HORN. SMALL WONDER THAT IT'S SO RIGHT FOR SO MANY.** With a long list of best-in-class features that focus on power, comfort, and capability, new 2009 Dakota Big Horn models — available on all crew cab and Extended Cab configurations — just reinforce the rightness. **PERFECT PACKAGING.** Behold the new Big Horn models, featuring standard automatic transmission, 17-inch cast aluminum machined wheels, P265 all-season tires, body-color front and rear bumpers, accent color grille, fog lamps and Big Horn badging. And Texas is big enough for its own identity: There, Big Horn models are badged as Dakota Lone Star trucks. <sup>(1)</sup>Based on 2008 *Ward's* Small Pickup segment. Excludes other Chrysler LLC designed vehicles.



**FLEXIBLE FUEL.** Dakota holds the class-exclusive advantage when it comes to V8 power. The available 4.7-liter Flex Fuel engine kicks out 302 horsepower and 329 lb-ft of torque, making it the most powerful engine in its class.<sup>[1]</sup> The E85 compatibility lets you run on ethanol, regular gas — or any combination of the two. And super-practical teams up with tough. With that available 4.7-liter Corsair V8 supplying best-in-class<sup>[2]</sup> available horsepower and best-in-class<sup>[1]</sup> maximum available towing capacity, you're ready for what life hands you. Take on the full load of facts at [dodge.com/dakota](http://dodge.com/dakota) <sup>[1]</sup>Based on 2008 *Ward's* Small Pickup segment. Excludes other Chrysler LLC designed vehicles. <sup>[2]</sup>Based on 2008 *Ward's* Small Pickup segment.

AUTHENTIC DODGE ACCESSORIES



**BEST-IN-CLASS<sup>[1]</sup>**

**CARGO BED.**



Dodge Dakota Big Horn Extended Cab in Brilliant Black Crystal Pearl.

**DAKOTA. THE BEST-IN-CLASS CARGO BED TAKES ON YOUR GEAR IN STYLE.** Dakota adapts instantly to whatever you throw at it. And, with that best-in-class<sup>[1]</sup> standard cargo bed capacity, whatever you throw in it. So start exploring the planet in the only pickup that gives you the largest and longest standard cargo bed in its class.<sup>[1]</sup>

The pleasure of Dakota: It all just works so well — especially when you outfit your new Dakota with Authentic Dodge Accessories by Mopar:

**UNDER-THE-RAIL BEDLINER.** For extreme truck bed protection, the Under-The-Rail-Bedliner helps keep cargo from shifting with its skid-resistant construction. It's available from Mopar — or as a factory-installed option.

**DUAL-FUNCTION BED EXTENDER.** Increase the storage capacity of your truck's bed by positioning the extender to enclose the open tailgate area. Reverse the position, and the extender becomes a convenient cargo divider.<sup>[2]</sup>

**TUNER-STYLE TAILLAMPS.** Custom taillamps install easily and are designed to provide a seamless fit, while adding a unique look to your Dakota. Meets all government (FMVSS) standards.

**SIDE WINDOW AIR DEFLECTORS.** Now you can partially open your windows even in the nastiest weather and remain dry. Tinted, acrylic visors come in a set of four.

**CHROME FUEL FILLER DOOR.** Add a bright complement to your Dakota with this Chrome Fuel Filler Door, also available in brushed aluminum.

Check out the full line of Dodge Accessories at [mopar.com](http://mopar.com). <sup>[1]</sup>Based on 2008 *Ward's* Small Pickup segment. <sup>[2]</sup>Properly secure all cargo.

**BEST-IN-CLASS<sup>[1]</sup>**

**INTERIOR.**



**Dodge Dakota Laramie Extended Cab in Medium and Dark Slate Gray two-tone leather trim.**

<sup>[1]</sup>Based on 2008 *Ward's* Small Pickup segment. Excludes other Chrysler LLC designed vehicles.



**YOU'LL GET MORE OUT OF IT BECAUSE OF WHAT WE PUT INTO IT.** Go across town, or move across the country. The truck with best-in-class<sup>[1]</sup> interior room offers multiple assets to make life easy on every road. **1 INGENUOUS INTERIOR.** With seating for five adults, Dakota Extended Cab increases leg room and interior to the level of best-in-class. Center consoles in all models feature a cell phone/MP3 holder. **2 STAIN-RESISTANT SEATING.** Stain Repel seat fabric forces liquids to quickly bead for easy cleaning, is resistant to odors and static, and has the durability to withstand stains — even with repeated cleanings. **3 DUAL POSITION TAILGATE.** In back, the innovative dual-position tailgate addresses convenience and cargo-carrying capability at the same time. **4 COLLAPSIBLE STORAGE CRATE.** The brilliant available Crate 'n Go™ storage system collapses when not in use, and is completely removable for the ultimate in convenience. For more on the comforts of Dakota, click over to [dodge.com/dakota](http://dodge.com/dakota) <sup>[1]</sup>Based on 2008 *Ward's* Small Pickup segment.







Dodge Dakota TRX4, featuring Alias Cloth/Royal Vinyl in Slate Gray two-tone.



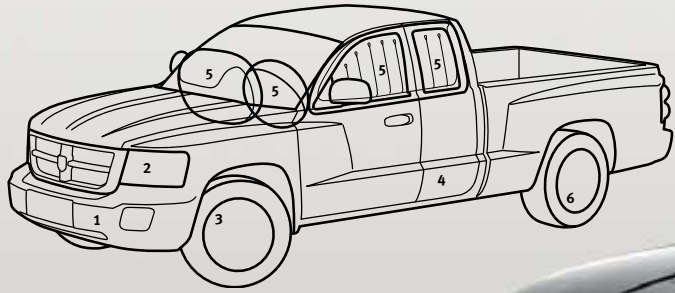
**PERSONAL TECHNOLOGY: HOW THE GOING REALLY GETS GOOD.** Keep in touch with the world, with audio and navigation systems that rival state-of-the-art homes and offices. Look for bright Satin Silver highlights, eye-friendly color treatments to gauges and pointers, even an available leather-wrapped steering wheel, and an Alpine® Premium Sound System with 6-disc CD/DVD changer, six speakers, and auxiliary audio input jack for MP3 devices. Factory-installed **SIRIUS® Satellite Radio** includes a one-year subscription. For more information, go to SIRIUS.com

**uconnect** The available 6.5-inch touch-screen **uconnect tunes** provides entertainment, information, and communication, all through an AM/FM/CD/DVD<sup>(1)</sup> stereo system. A 30GB hard drive allows you to store photos, playlists, maps, and points of interest, as well as rip, stash, organize, and shuffle up to 6,700 digital music files from CDs, integrated USB port, or exterior input jack. The touch screen allows you to easily change radio stations and play digital audio files. Or, step up to the available **uconnect gps**, which includes all the same great features, and adds the convenience of full mapping turn-by-turn navigation with SIRIUS® traffic real-time updates using **SIRIUS Satellite Radio**. The included **uconnect phone** provides hands-free, voice-activation capability with your Bluetooth® compatible phone.

**uconnect studios** Gain access to over 130 channels, including 100% commercial-free music, sports, news, talk, entertainment, traffic, and weather with uconnect studios featuring SIRIUS Satellite Radio. Comes bundled with uconnect gps or it can be added as a stand-alone feature.

**uconnect phone** Go high-tech with an in-vehicle voice-activated communication system that allows you to talk on your Bluetooth compatible phone virtually hands-free. Comes bundled with uconnect gps or is available when choosing the optional Convenience Group.

**uconnect web** Turn your vehicle into a WiFi Hotspot with **uconnect web**. This Authentic Dodge Accessory by Mopar allows every passenger in your vehicle to harness the power and entertainment value of the Internet at the same time. It's easy for the whole family to use with laptops or other wireless devices, and does not require software. Subscription required, sold separately. <sup>(1)</sup>uconnect in-dash DVD capability is not available in all states. See your dealer for details. "SIRIUS," the SIRIUS dog logo, and related marks are trademarks of SIRIUS Satellite Radio Inc. All other trademarks, service marks and logos are the property of their respective owners. All rights reserved. Pricing and programming content are subject to change. Not available in Alaska and Hawaii. For full Terms & Conditions, visit SIRIUS.com



★ ★ ★ ★ ★ | HIGHEST GOVERNMENT  
FIVE-STAR | FRONT & SIDE CRASH RATING

**SAFETY AND SECURITY. IT'S EVERYWHERE IN DAKOTA.** Dodge Dakota crew cab offers the best: the government's highest front and side crash test ratings!<sup>[1]</sup> Also helping protect you:

**1 ENERGY-ABSORBING OCTAGONAL FRONT FRAME RAIL TIPS.** These replaceable tips reduce impact energy by collapsing rearward in a controlled manner in the event of a front impact by reducing transferred force that could reach the driver and front passenger.

**2 AUTOMATIC HEADLAMPS.** Standard on Laramie models; when switched to automatic, headlamps turn on at dusk and turn off in daylight.

**3 THE ANTILOCK BRAKE SYSTEM (ABS).** This system features two modes: rear-wheel ABS, which is standard on 2009 Dakota models; tuned for tolerance, the available 4-wheel ABS works with the rack-and-pinion steering system, and helps provide Dakota with superb maneuvering and stopping capability.

**4 THE FULLY BOXED HYDROFORMED LADDER FRAME.** Critical to Dakota's outstanding handling and towing/hauling capability, this is technology that works under all conditions and loads, helping deliver a quiet, comfortable ride while contributing to impressive strength, stiffness, durability and NVH (noise, vibration, and harshness) control.

**5 THE ADVANCED MULTISTAGE FRONT AIR BAG SYSTEM.** Standard on all Dakota models is an advanced multi-stage front air bag<sup>[2]</sup> system; the available supplemental side-curtain air bags (included in the Extra Security Package) help further protect both front and rear side passengers.

**6 THE TIRE PRESSURE MONITORING SYSTEM.** Add peace of mind with this standard feature. It communicates a clear, visible alert in the instrument panel when tire pressure is low, keeping steering and handling in top form — and contributing to obtaining peak mileage and fuel economy.

There's always more in Dakota. Bookmark [dodge.com](http://dodge.com) and hit it frequently.<sup>[1]</sup> Star ratings are part of the U.S. Department of Transportation's SaferCar.gov program ([safercar.gov](http://safercar.gov)). Dakota Extended Cab rear seat was not tested by NHTSA. <sup>[2]</sup> Always sit properly in the seat with the seat belt fastened. Children 12 and under should always be in a backseat correctly using an infant or child restraint system or the seat belt positioned correctly for the child's age and weight.



**DAKOTA BIG HORN CREW CAB**  
BRILLIANT BLACK CRYSTAL PEARL

**DAKOTA TRX4 EXTENDED CAB**  
SUNBURST ORANGE PEARL

**DAKOTA TRX4 CREW CAB**  
DETONATOR YELLOW

**DAKOTA LARAMIE CREW CAB**  
INFERNO RED CRYSTAL PEARL

**DAKOTA BIG HORN EXTENDED CAB**  
AUSTIN TAN

**ST**

Standard: 3.7-liter V6 engine mated to a Getrag 6-speed manual transmission. Also available is a 4-speed automatic, both riding on 16-inch styled steel wheels. Inside: AM/FM/MP3 stereo with single-disc CD player and auxiliary input jack, cloth seats, tilt steering, advanced multistage driver and front-passenger air bags<sup>[1]</sup> black instrument-panel bezel and air conditioning. Mechanical advantages include front disc/rear drum brakes with rear-wheel ABS and, on four-wheel-drive models, electronic part-time 4WD system with 4LOCK, 4LOW, and Neutral. Manual 5"x7" exterior mirrors, fixed rear window, Dark Slate Gray front fascia and rear bumper, chrome grille with black honeycomb insert.

**BIG HORN**

New for 2009 is the Big Horn trim level, known in Texas as Lone Star. Big Horn features all the standard equipment of the ST, and adds body-color front and rear fascias, accent color grille, black headlamp bezels, fog lamps, speed control, power windows, locks, and mirrors, Crate 'n Go<sup>™</sup> 17-inch cast aluminum wheels and tailgate badges.

**TRX4**

Available only on Dakota 4x4 models. TRX4 shares the same grille, headlamp and fascia as the new Big Horn, but adds black bodyside molding and black fender flares. Standard part-time shift-on-the-fly transfer case, 4x4 Skid Plate Group (which includes front suspension, transfer case, and fuel tank skid plates), antispin rear differential, rugged P265/70R16 outlined white-letter trail tires on 16-inch cast aluminum wheels, front tow hooks. TRX4-specific power cloth bucket seats, standard SIRIUS Satellite digital radio, leather-wrapped steering wheel, overhead console with temperature compass and trip computer, and security alarms.

**LARAMIE**

In Laramie, you'll find all the standard equipment of Big Horn and TRX4, plus automatic headlamps, chrome rear bumper and front chrome grille with matching billets, chrome bodyside molding, and silver-painted 18-inch aluminum wheels. Standard features also include Remote Start and the Alpine<sup>®</sup> six-speaker system with a 276-watt amplifier.

**DAKOTA DIMENSIONS**

	<b>EXT.</b>	<b>CREW</b>
Overall Length	218.5"	218.5"
Overall Width	71.7"	71.7"
Overall Height	68.6"	68.6"
Wheelbase	131.3"	131.3"

**DAKOTA CAB DIMENSIONS**

	<b>EXT.</b>	<b>CREW</b>
Head Room (front/rear)	39.6"/36.5"	39.9"/38.4"
Leg Room (front/rear)	41.9"/32.1"	41.9"/36.4"
Shoulder Room (front/rear)	57.7"/57.4"	57.7"/57.7"
Hip Room (front/rear)	54.9"/56.9"	54.9"/56"

<sup>[1]</sup>Always sit properly in the seat with the seat belt fastened. Children 12 and under should always be in a backseat correctly using an infant or child restraint system or the seat belt positioned correctly for the child's age and weight.

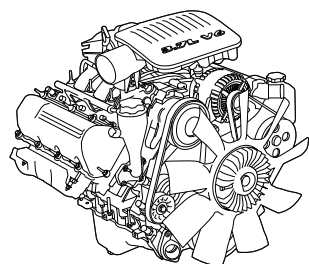
**DAKOTA ST  
CREW CAB**  
MINERAL GRAY METALLIC

**DAKOTA ST  
EXTENDED CAB**  
BRIGHT WHITE

**DAKOTA BIG HORN EXTENDED CAB**  
BRIGHT SILVER METALLIC

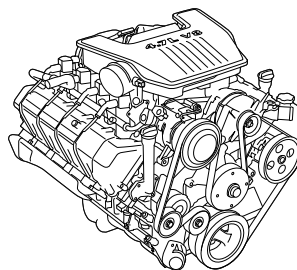


**DAKOTA LARAMIE CREW CAB**  
DEEP WATER BLUE PEARL



**3.7L MAGNUM® V6**

The standard engine for Dakota generates a solid 210 horsepower @ 5,200 rpm and 235 lb-ft of torque @ 4,000 rpm, with reliability proven through extensive testing.



**4.7L FLEX FUEL V8**

Utilize either gasoline or E85 ethanol — or any combination of the two. This engine produces more power than the previous version — 302 horsepower @ 5,650 rpm, and 329 lb-ft of torque @ 3,950 rpm — with no compromise in performance.



1



2



3



4



5



6



7

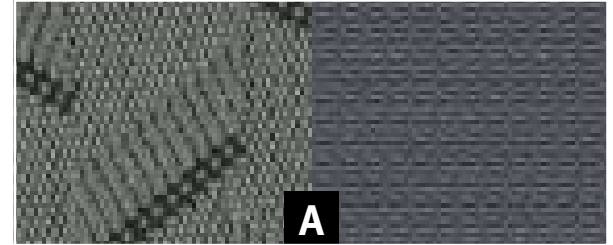
- 1 16-inch styled steel wheel, standard on ST
- 2 16-inch painted cast-aluminum wheel, standard on TRX4, available on ST Appearance Package
- 3 17-inch cast-aluminum machined wheel, standard on Big Horn/Lone Star
- 4 18-inch painted cast-aluminum wheel, standard on Laramie, available on Big Horn/Lone Star models
- 5 18-inch chrome-clad aluminum wheel, available on Laramie
- 6 18-inch chrome cast-aluminum wheel, Authentic Dodge Accessory
- 7 18-inch machined-face, black pocket cast aluminum wheel, Authentic Dodge Accessory

**DAKOTA COLORS AND FABRICS**

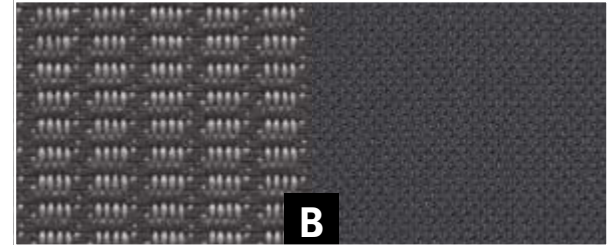
<b>EXTERIOR COLOR</b>	<b>ST</b>	<b>BIG HORN</b>	<b>TRX4</b>	<b>LARAMIE</b>
Bright Silver Metallic	<i>A</i>	<i>A (B)</i>	<i>D</i>	<i>B (E)</i>
Bright White Clear	<i>A</i>	<i>A (B,C)</i>		<i>B, C (E, F)</i>
Brilliant Black Crystal Pearl	<i>A</i>	<i>A (B,C)</i>	<i>D</i>	<i>B, C (E, F)</i>
Detonator Yellow		<i>A (B)</i>	<i>D</i>	
Deep Water Blue Pearl	<i>A</i>	<i>A (B,C)</i>	<i>D</i>	<i>B, C (E, F)</i>
Austin Tan Pearl	<i>A</i>	<i>A (C)</i>		<i>C (E, F)</i>
Inferno Red Crystal Pearl	<i>A</i>	<i>A (B,C)</i>		<i>B, C (E, F)</i>
Mineral Gray Metallic	<i>A</i>	<i>A (B)</i>		<i>B (E, F)</i>
Sunburst Orange Pearl			<i>D</i>	<i>B, C (E, F)</i>

STANDARD ON ALL MODELS (OPTIONAL)

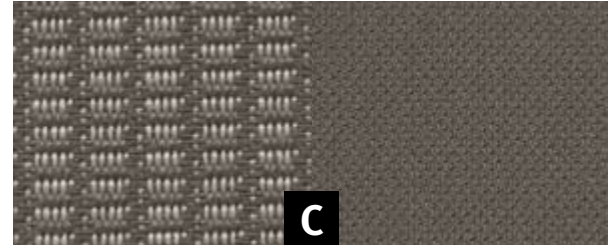
Trexx/Kristy Cloth  
Medium Slate Gray



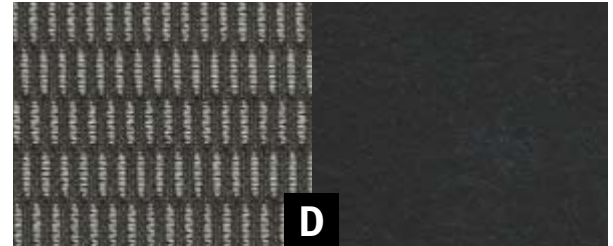
Billings and Racine  
Cloth with Stain  
Repel seat fabric  
Medium Slate Gray



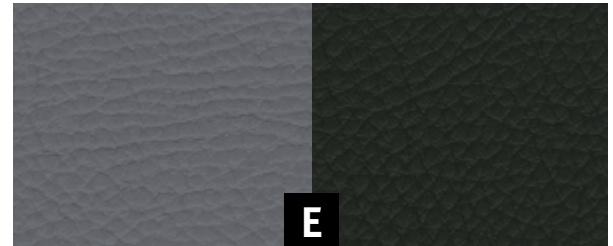
Billings and Racine  
Cloth with Stain  
Repel seat fabric  
Medium Khaki



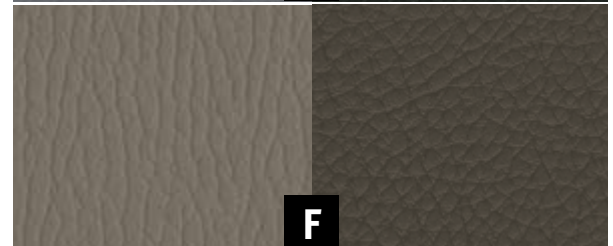
Alias Cloth/Royale Vinyl  
Slate Gray Two-Tone



Sutton Leather Trim/  
Sutton Vinyl  
Slate Gray Two-Tone



Sutton Leather Trim/  
Sutton Vinyl  
Khaki Two-Tone



# DAKOTA BUYER'S GUIDE

## FEATURES COMMON ACROSS ALL TRIM LEVELS

AIR BAGS <sup>[1]</sup> — Advanced multistage driver and front-passenger
AIR CONDITIONING — Manual temperature control
ALTERNATOR — 136-amp
AXLE <ul style="list-style-type: none"> <li>— Front, 205-mm<sup>[2]</sup></li> <li>— Rear, 8.25 (not available with 4.7L Flex Fuel V8 engine)</li> </ul>
BRAKE/PARK INTERLOCK — Automatic transmission only
BRAKES — Front disc/rear drum with rear-wheel ABS
ENGINE CONTROLLER — Next-generation
GLASS <ul style="list-style-type: none"> <li>— Deep-tinted sunscreen on rear windows</li> <li>— Tinted front door and windshield</li> </ul>
HOOKS — Rear seat, grocery bag <sup>[3]</sup>
JACK — Scissor-type
LAMPS — Map/dome reading
MIRRORS, INTERIOR — Rearview day/night
POWER OUTLET — 12-volt auxiliary, instrument panel
SEATS <ul style="list-style-type: none"> <li>— Front, bucket</li> <li>— Rear 60/40 folding<sup>[4]</sup></li> </ul>
STABILIZER BAR — Front
STEERING COLUMN — Tilt
SUN VISORS — Passenger side with mirror
TAILGATE — Dual position
TIP START — Quick start, prevents double starts, preserves battery, ignition and gear life
TIRE PRESSURE MONITORING SYSTEM
TRAILER TOW WITH 4-PIN WIRING HARNESS
TRANSFER CASE <sup>[2]</sup> — NV243GII (V6) electronic, part-time shift-on-the-fly

• = Included. P = Available within package noted. O = Optional.

<sup>[1]</sup>Always use seat belts. Children 12 and under should always be in a backseat correctly using an infant or child restraint system, or the seat belt positioned correctly for the child's age and weight. <sup>[2]</sup>4x4 models only. <sup>[3]</sup>Extended Cab only. <sup>[4]</sup>Crew cab only. <sup>[5]</sup>Not compatible with aftermarket fabric-protecting coatings. <sup>[6]</sup>uconnect in-dash DVD capability is not available in all states. See your dealer for details. <sup>[7]</sup>Requires V8 engine.

## PAYLOAD AND TOWING

MODEL	ENGINE	MAXIMUM PAYLOAD	MAXIMUM TOWING
Extended Cab 4x2	3.7L V6	1,840	4,950
	4.7L V8	1,650	7,200
Crew Cab 4x2	3.7L V6	1,680	4,800
	4.7L V8	1,500	7,050
Extended Cab 4x4	3.7L V6	1,640	4,750
	4.7L V8	1,450	6,950
Crew Cab 4x4	3.7L V6	1,460	4,600
	4.7L V8	1,300	6,850

Notes: 1. Payload = GVWR minus Curb Weight. 2. Maximum Trailer Weights are rounded to the nearest 50 lb and payload to nearest 10 lb. Maximum Trailer Weights = GCWR minus Curb Weight minus 150 lb (allowance for driver).

	ST	Big Horn	TRX4 <sup>[2]</sup>	Laramie
<b>ENGINE AND TRANSMISSION</b>				
3.7L MAGNUM® V6/6-SPEED MANUAL	•			
3.7L MAGNUM V6/4-SPEED AUTOMATIC	O	•	•	•
4.7L FLEX FUEL V8/5-SPEED AUTOMATIC		O	O	O
<b>MECHANICAL</b>				
AXLE — Rear, 9.25 (included with 4.7L Flex Fuel V8)		P	P	P
AXLE RATIOS	•			
— 3.21 (standard with manual transmission)				
— 3.55 with 3.7L engine (4x2 only with 16-inch tires)	P			
— 3.55 with 4.7L engine		P		P
— 3.92 with 3.7L engine (standard on TRX4, 4x2 models with 17-18-inch tires; on all 4x4 models)		•	•	•
— 3.92 with 4.7L engine (packaged with antispin differential)		O	•	O
BATTERY	•	•		•
— 600-amp, maintenance-free with run-down protection				
— 750-amp, maintenance-free (included with Heavy Duty Service Group)	P	P	• <sup>[2]</sup>	•
BRAKES — Front disc/rear drum with 4-wheel ABS (included with Extra Security Package)	P	P	P	P
DIFFERENTIAL — Rear, antispin (requires 3.55 or 3.92 axle ratio)	O/P	O/P	•	O/P
ENGINE BLOCK HEATER	O	O	O	O
HEAVY DUTY ENGINE COOLING — Includes auxiliary in-tank transmission oil and power steering cooler (included with Heavy Duty Group)	P	P	P	P
REMOTE START SYSTEM — Included with Premium Sound Group (requires automatic transmission)		P	P	•
TRANSFER CASE — NV233 <sup>[2]</sup>		O	O	O
<b>EXTERIOR</b>				
BEDLINER — Box, under-the-rail (included with Utility Group)		P	O	•
DOOR — Full Swing® rear <sup>[3]</sup> (included with Convenience Group)		P	•	•
FASCIAS	•			
— Front, Dark Slate Gray				
— Front, body-color		•	•	•
— Rear bumper, Dark Slate Gray	•			
— Rear bumper, body-color		•	•	
— Rear bumper, chrome				•
FENDER FLARES — Front and rear, Jet Black			•	
FOG LAMPS — Two integrated in front fascia		•	•	•
GRILLE	•			
— Chrome with black honeycomb insert				
— Silver-accented with black honeycomb insert		•	•	
— Chrome with chrome billets				•
HEADLAMPS — Automatic				•
HEADLAMPS BEZEL	•			•
— Chrome with chrome trim				
— Black with accent trim		•	•	
MIRRORS, EXTERIOR	•			
— Dual manual 5x7-inch fixed				
— Dual power 5x7-inch fixed		•	•	•
— Dual power 6x9-inch folding (included with Trailer Tow Group)		P	P	P
MOLDING			•	
— Bodyside, Black				
— Bodyside, chrome				•

	ST	Big Horn	TRX4 <sup>[2]</sup>	Laramie
<b>EXTERIOR (CONTINUED)</b>				
SHOCK ABSORBERS — Rear, extra heavy-duty			•	
SIDE STEPS — Chrome tubular, Mopar	O	O		O
SKID PLATES			•	
— Transfer case/front suspension				
— Fuel tank			•	
TIRES	•			
— P245/70R16 BSW, on-/off-road				
— P265/60R18 BSW, on-/off-road		O		•
— P265/65R17 BSW, on-/off-road			•	
— P265/70R16 OWL, on-/off-road				•
— P265/60R18 OWL, on-/off-road				O
TOW HOOKS			•	
UTILITY RAILS — Box (included with Utility Group)		P	•	•
WHEELS	•			
— 16x7-inch styled steel				
— 16x8-inch cast aluminum	P		•	
— 17x8-inch cast aluminum machined			•	
— 18x8-inch painted cast aluminum				•
— 18x8-inch chrome-clad aluminum				O
<b>INTERIOR</b>				
CONSOLE				
— Floor (includes 12-volt auxiliary power outlet; requires bucket seats)	O	•	•	•
— Overhead, with temperature, compass and trip computer			•	•
DOOR TRIM PANEL	•			
— Two-tone vinyl with map pocket				
— Premium, two-tone vinyl with map pocket		•	•	
— Premium, two-tone with map pocket and Satin Silver accents				•
FLOOR MATS			•	
— Rubber, front and rear <sup>[2]</sup>				
— Front <sup>[3]</sup>			•	•
— Front and rear <sup>[4]</sup>		•	•	•
HOMELINK® UNIVERSAL TRANSCEIVER — Included with overhead console			•	•
HOOD INSULATION			•	•
ILLUMINATED ENTRY			•	•
INSTRUMENT CLUSTER	•	•		
— Includes speedometer, tachometer, engine temperature and fuel gauge				
— Includes speedometer, tachometer, engine temperature and fuel gauges with Satin Silver accent rings			•	•
INSTRUMENT PANEL BEZEL	•	•		
— Black				
— Alloy Silver Metallic			•	
— Satin Silver				•
KEYLESS ENTRY			•	•
LAMPS — Rear dome with on/off switch <sup>[6]</sup>			•	•
LOCKS	•			
— Manual				
— Power		•	•	•
MIRRORS, INTERIOR — Rearview auto-dimming (included with uconnect)			P	P
POWER OUTLET — 12-volt auxiliary, center console (included with floor console)	P	•	•	•

INTERIOR (CONTINUED)	ST	Big Horn	TRX4 <sup>[2]</sup>	Laramie
SPEED CONTROL		•	•	•
STEERING WHEEL		•	•	•
— Luxury		•	•	•
— Leather-wrapped (includes steering wheel-mounted audio controls on Laramie)			•	•
— Mounted audio controls (includes leather-wrapped steering wheel; included with Premium Sound Group; requires Alpine® Premium Sound System)			P	•
STORAGE — Center armrest (included with front 40/20/40 split bench seat)		P		P
SUN VISORS		•	•	
— Driver-side		•	•	
— Driver-side with mirror			•	•
WINDOWS		•		
— Manual				
— Driver, one-touch			•	•
— Rear, defroster (includes rear fixed window)		P	O	O
— Rear, fixed (included with rear window defroster)		•	•	P
— Rear, sliding		O	•	•
<b>SEATING &amp; TRIM</b>				
SEATS		•	•	
— Standard cloth		•	•	
— Premium two-tone Stain Repel seat fabric <sup>[5]</sup>		O		•
— TRX-specific premium bolstered bucket				•
— Two-tone leather-trimmed				O
— Front, 40/20/40 split-bench		O		O
— Manual driver's		•	•	
— Power 6-way driver's with manual lumbar adjustment		P	•	•
— Heated front seats			O	O
— Rear 40/40 split-folding <sup>[3]</sup>		O	•	•
— Rear 60/40 folding <sup>[4]</sup>		•	•	•
— Crate 'n Go™			•	•
<b>ENTERTAINMENT SYSTEMS</b>				
RADIO		•	•	•
— AM/FM/MP3 radio with CD player and auxiliary input jack		•	•	•
— AM/FM/MP3 radio and integrated 6-disc CD/DVD changer and auxiliary input jack (included with Premium Sound Group)			P	•
— uconnect gps system with navigation <sup>[6]</sup> includes AM/FM, DVD/CD/MP3 compatible player, 30GB media hard drive and auxiliary input jack (includes uconnect phone and SIRIUS)			P	O
SIRIUS® SATELLITE RADIO SYSTEM — Included with Convenience Group, or with uconnect gps		P	•	•
SPEAKERS		•	•	•
— 4 total, one in each door		•	•	•
— Alpine® Premium Sound System with 6 speakers and 276 watts of power (included with Premium Sound Group)			P	•
<b>SAFETY &amp; SECURITY</b>				
AIR BAGS <sup>[1]</sup> — Supplemental side-curtain air bags for front and rear outboard occupants (included with Extra Security Package)	P	P	P	P
SECURITY ALARM — Integrated vehicle alarm system			•	•
SENTRY KEY® THEFT DETERRENT SYSTEM		P	•	•
uconnect — Voice-activated hands-free communication system (includes auto-dimming rearview mirror; included with uconnect tunes with navigation)			P	P

## PACKAGES

	ST	Big Horn	TRX4 <sup>[2]</sup>	Laramie
CONVENIENCE GROUP — Includes SIRIUS Satellite Radio and Full Swing® rear door <sup>[3]</sup>		O		
EXTRA SECURITY PACKAGE — Includes front disc/rear drum with 4-wheel ABS and supplemental side-curtain air bags	O	O	O	O
HEAVY-DUTY SERVICE GROUP — Includes Heavy-Duty Engine Cooling and 750-amp maintenance-free battery (included with Trailer Tow Group)	P	P	•	P
PREMIUM SOUND GROUP — Includes remote start system (with Sentry Key on Big Horn) on automatics, 6 Alpine speakers, leather-wrapped steering wheel with mounted audio controls, AM/FM/MP3 radio and integrated 6-disc CD/DVD changer and auxiliary input jack		O	O	
ST APPEARANCE PACKAGE — Includes body-color front fascia and rear bumper, fog lamps and 16-inch painted aluminum wheels	P			
TRAILER TOW GROUP — Includes a Class IV receiver hitch, 7-pin wiring harness, 750-amp battery and the Heavy-Duty Service Group, dual power 6x9-inch folding exterior mirrors, antispin differential and 3.92 axle ratio (included with Utility Group) Additional Dodge Towing Accessories may be required.			O	O
UTILITY GROUP — Includes Trailer Tow Group, antispin differential, 3.92 axle ratio, box utility rails and under-rail bedliner (requires automatic transmission)		O		
<b>ACCESSORY OPTION PACKAGES</b>				
CHROME TUBULAR SIDE STEPS (Authentic Dodge Accessory)			O	O
CHROME APPEARANCE PACKAGE — Includes Chrome Tubular Side Steps, Chrome Fuel Filler Door, and Chrome Exhaust Tip (Authentic Dodge Accessory)	O	O		O

Note: In Texas, Dakota Big Horn models are badged as Lone Star.

About this catalog: Since the time of printing, some of the information you'll find in this catalog may have been updated. Ask your dealer for details. Some of the equipment shown or described throughout this catalog is available at extra cost. Specifications, descriptions, illustrative materials, and all competitive comparisons contained herein are as accurate as known at the time this publication was approved for printing. Chrysler LLC reserves the right to discontinue models at any time or change specifications without notice or without incurring obligation. All options are required in combination with other options. For the price of the model with the equipment you desire, or verification of specifications contained here, see your Dodge dealer. Dodge, HEMI, Magnum, Mopar, Sentry Key, SRT, SRT8, uconnect, and VES are registered trademarks of Chrysler LLC. "SIRIUS," the SIRIUS dog logo "SIRIUS Backseat TV" and related marks are trademarks of SIRIUS Satellite Radio Inc. All other trademarks, service marks and logos are the property of their respective owners. All rights reserved. Prices and programming content are subject to change. Not available in Alaska and Hawaii. For full terms and conditions, visit SIRIUS.com. ©2008 Viacom International Inc. All rights reserved. Insurance is underwritten by member companies of American International Group, Inc. Bluetooth is a registered trademark of Bluetooth SIG Inc. Alpine and the Alpine logo are registered trademarks of Alpine Electronics, Inc. HomeLink is a registered trademark owned by Johnson Controls, Inc. The Dodge Rewards Visa credit card is issued by FIA Card Services, N.A.

dodge.com » 800-4ADODGE



The Dodge Dakota includes a Lifetime Powertrain Limited Warranty. No deductible. See dealer for a copy of the limited warranty and details. Non-Transferable. Not available on SRT,® diesel vehicles, Sprinter, Ram Chassis Cab, Hybrid System components (including transmission), and certain fleet vehicles.

## 3/36 BASIC LIMITED WARRANTY

All Dodge vehicles are covered by the Chrysler 3-year/36,000-mile Basic Limited Warranty. See dealer for a copy of this limited warranty. Excludes normal maintenance and wear items.

Chrysler Financial delivers Chrysler, Jeep,® and Dodge customers a personal, worry-free automotive financing experience. More than just another finance company with competitive rates, Chrysler Financial stands behind you through life's twists and turns by offering fast approvals, flexible terms and unparalleled personalized service. Visit cf.com or your Dodge dealer to discover all that Chrysler Financial offers. Taking care of you, all along the way.

The only insurance guaranteed to repair your vehicle using Authentic Dodge Collision Repair Parts by Mopar for as long as you own your Dodge vehicle, and up to \$100 off your deductible when those repairs are done at a Dodge dealership — all at rates that are tough to beat. For a free quote, visit [dodgeautoinsurance.com](http://dodgeautoinsurance.com) or call 800-836-1598 and mention keycode QL9XXX.

If your business relies on vehicles, Dodge BUSINESSLINK® can help save you time, money and hassles. For more, click over to [dodge.com/businesslink](http://dodge.com/businesslink) or call us toll-free at 877-2THELINK (877-284-3546).

Your Dodge is one of the best performing vehicles on the road. Why not protect your investment with a Chrysler Service Contract or Maintenance Plan? For more information, see your Dodge dealer, call 800-442-2666 or visit [servicecontracts.chrysler.com](http://servicecontracts.chrysler.com).

Enhance your Dodge Dakota with Authentic Dodge Accessories by Mopar. They're designed specifically for your vehicle, for exceptional fit, finish and performance. Visit your dealership or [mopar.com](http://mopar.com).

This suite of integrated digital systems bundles entertainment, information, and communication. For more information, visit your dealer.

SIRIUS Satellite Radio delivers over 130 channels, including 100% commercial-free music, sports, news, talk, entertainment, traffic and weather. Factory-installed SIRIUS Satellite Radio includes a one-year subscription. For more information, go to [SIRIUS.com](http://SIRIUS.com).

Earn five points per dollar charged at your Dodge dealership and one point per dollar everywhere Visa® is accepted. Whether you're saving points for your down payment or for your vehicle's scheduled maintenance, it pays to be a Dodge Rewards Visa cardholder. For more information or to apply, visit [dodgecreditcard.com](http://dodgecreditcard.com) or call 800-478-6179.

The Dodge Goods catalog is a handpicked collection of items bearing the powerful Dodge name — from Motorsports apparel and collectible die-cast models to the latest in work and ranch wear. It's all found at [dodge.com/goods](http://dodge.com/goods). Call 877-789-DODGE (3634) for a free catalog.

Honoring Those Who Serve. Chrysler LLC proudly supports the members of the U.S. Armed Forces and their families.