

2016 FIAT® 500 / 500c / 500 TURBO / ABARTH® / 500L

CITIN  
QUE  
CEN  
TO





## *WHAT FIAT® 500 MEANS*

This is a nameplate that goes beyond its most iconic Cinquecento model: FIAT 500 is a well-rounded family with a minimalist Italian design philosophy that manages to pack more personality per square inch than anything else on the road — efficiently including everything you want while delivering exactly what you need. Advanced, gas-sipping MultiAir® engines mean that 500 is all about freedom and mobility, and nothing to do with sacrifice. Still, there's plenty of room for our driver's personality with the wide range of FIAT 500 capability and personalization options. After delivering decades of agile performances, urban-friendly dexterity and intelligent details, 500 is no longer just a number — it's the definition of happy.

*fiat* 500

# MAKE IT YOUR OWN

5.9 L/100  
KM HWY\*  
1.4L MULTIAIR® I-4

The 1.4L MultiAir 16V I-4 engine is exclusive FIAT® technology, a decade in the making, utilizing electrohydraulic valves for more dynamic and direct control of air and combustion. Shift with precision, accelerate with authority and brake quickly with your responsive 5-speed manual transmission. Of course you can choose the available 6-speed automatic transmission and experience the same thrills with a more hands-off approach.



## POP

The FIAT® 500 Pop has standout looks that are elevated by technical talents that turn driving into high art. Pop features a 1.4L MultiAir® 16V I-4 engine with available 6-speed automatic transmission and air conditioning. Cruise control, Uconnect® 5.0 with hands-free communication,\* 50/50 split rear folding seats and more come standard — it's not just a car, it's a movement.



## SPORT

Fans are drawn to FIAT 500 Sport, and its talents will keep them coming back season after season. A sport suspension, red brake calipers, unique front and rear fascia, available heated front seats and sport cloth seats all add to its winning streak.



## TURBO

Adding more horsepower and torque, Turbo promises to please FIAT 500 enthusiasts as well as create its very own following. Why not, when it's loaded with a standard 1.4L MultiAir 16V I-4 Turbo engine? It offers sport-tuned suspension and single exhaust, leather-wrapped steering wheel and shift knob, available leather-faced seats ... and a whole lot of attitude.



## LOUNGE

The FIAT 500 Lounge harkens back to a time when extra effort was taken with attire, furnishings and manners. A 1.4L MultiAir 16V I-4 engine, available 6-speed automatic transmission, leather-faced seats, heated front seats and premium 15-inch aluminum wheels are just a few of its highly refined features. Sophisticates, this is your comfort zone.



## 1957 EDITION

Incorporating the retro style of the original 1957 Nuovo 500, this special edition will capture the attention of a whole new generation of trendsetters. It features wheels with a wide chromed lip, body-colour accent and the historic FIAT emblem. Colours include classic Bianco (White), Verde Chiaro (Light Green) and Celeste Blu (Light Blue).



## CABRIO

Driving the 500 Cabrio makes everything a breeze. An innovative three-position power soft top allows you to decide on the fly (up to 96 km/h) how much open sky you want. Available heated front, leather-faced seats and the BeatsAudio™ premium sound system make for awe-inspiring surroundings, as well.



fiat 500

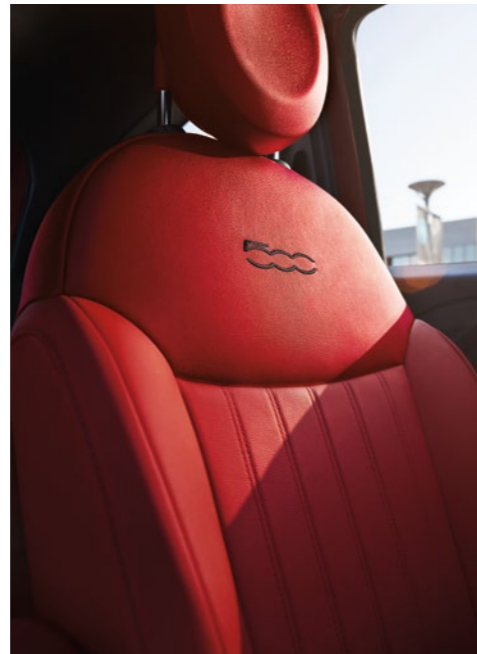
## ALL-AROUND GOOD FEELING

The FIAT® 500 Cabrio makes the most of the great outdoors by providing spectacular vistas, yet also focuses inward to include those amenities that make any trip special. The luxury of heated leather-faced seating for the driver and front passenger and a leather-wrapped

steering wheel catches eyes and rays during top-down moments. Italian style, state-of-the-art technology and an available BeatsAudio™ premium sound system keep occupants happy, entertained and feeling secure. Clearly, this convertible doesn't rely on good views alone.



**b** beats



**INVITING BOTH PASSENGERS AND THE SUN IN** The FIAT 500 Cabrio woos with driver-friendly features that are easy to warm up to. An available 7-inch customizable in-cluster display centre clearly conveys speed, fuel economy, driving range and more. The all-new Uconnect® 5.0 with available navigation<sup>2</sup> brings hands-free communication<sup>1</sup> to each exciting turn or straightaway. The standard Sport mode makes for a more responsive performance overall by providing distinct engine and steering calibrations that maximize horsepower and torque. Choose from 15 fashion-forward exterior colours with colour-coordinated interior finishes, including the body-coloured instrument panel. All are synonymous with iconic design, self-expression and fun.



## AN INNOVATIVE ROOF DESIGN

This is the vehicle the open road was invented for: the FIAT® 500c features an innovative three-position power-folding retractable soft top that lets you feel the wind in your hair on a whim — even at speeds up to 96 km/h. Three preset positions offer a range of stopping points from slightly open to fully dropped. This dual-layer cloth top is available in a choice of three colours, improving views from both inside and out.

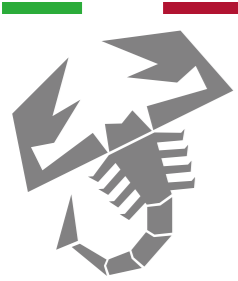
*fiat* 500c



## POWER-TRAINED

As its aggressively designed front fascia suggests, the FIAT® 500 Turbo makes quite an impression with its 1.4L MultiAir® 16V I-4 Turbo engine. It produces 135 horsepower, heart-stopping bursts of acceleration and a lot of raised eyebrows. Along with fuel economy as efficient as 8.5 city / 6.9 hwy L/100 km (33 city / 41 hwy mpg)\* its single turbocharger, twin inter-coolers and sport-tuned exhaust deliver 34 percent more power and 53 percent more torque (150 lb-ft) compared to the naturally aspirated FIAT 500 1.4L MultiAir engine. The 5-speed manual and the available 6-speed automatic transmissions both robustly match the impressive power output of the Turbo engine. This is how you harness the beast.

*fiat*® 500 TURBO



## BEHOLD THE SCORPION

Racing's legendary Karl Abarth inspired the "small but wicked" moniker with vehicles that boasted more than 10,000 race victories, 10 world records and 133 international titles. The latest generation FIAT® 500 Abarth® brings its own brand of outstanding performance, aggressive and aerodynamic styling, and technological advancement. Beyond a low ride height and sport-tuned sound, competitive Abarth DNA is infused into the performance-designed cockpit. Its three-spoke leather-wrapped steering wheel with a race-style flattened bottom, turbo boost gauge with integrated LED gear shift indicator, and high-back bucket seats with racing harness pass-through and firm side bolsters all enable drivers to be at their formidable best.



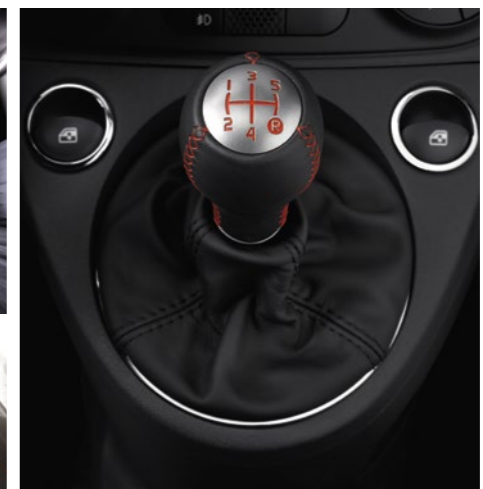
160 hp

## "GO FASTER THAN YESTERDAY"

KARL ABARTH

The available AISIN® 6-speed automatic transmission is mated to the track-tested 1.4L MultiAir® 16V I-4 Turbo engine, providing 157 horsepower and 183 lb-ft of torque (or 160 horsepower and 170 lb-ft of torque with the standard 5-speed manual transmission). Of course, that kind of power requires discipline. The Torque Transfer Control (TTC) keeps it all in check

by transferring power to the drive wheels for improved at-the-limit handling. It operates along with the Electronic Stability Control (ESC)<sup>3</sup> system to transfer torque from a front wheel that slips to one that grips. With fuel economy as efficient as 8.5 L/100 km (33 mpg) city and 6.9 L/100 km (41 mpg)\* highway, stepping on it is both responsive and responsible.



fiat® 500 ABARTH®

\*See page 24 for full details.

All the extra hauling and passenger space of 500L is more than accounted for with extra power under the hood thanks to the innovative and award-winning 1.4L MultiAir® I6V I-4 Turbo engine, which delivers 160 horsepower and 184 lb-ft of torque.

7.1 L/100  
KM HWY\*  
1.4L MULTIAIR I-4 TURBO



FIAT® 500L Urbana Trekking shown in Blue Tornado.

\*See page 26 for full details.

## WHAT THE *L* STANDS FOR

500L is FIAT 500 at its most accommodating: four doors, flexible seating design and a surprisingly roomy interior make things super-comfortable for family, friends and all passengers alike. Each and every seat is acoustically great, as well: the available BeatsAudio™ premium sound system delivers your favourite tunes just the way the artist intended. Of course, 500L comfort comes in other forms, like the ability to know what's around you — the available ParkView® Rear Back-Up Camera<sup>4</sup> uses grid lines to keep you on the straight and narrow, while Park-Sense® Rear Park Assist<sup>4</sup> System utilizes ultrasonic sensors at low speeds when in Reverse to detect stationary objects.

fiat®  
500L

UNIQUE PERSPECTIVE



360°  
VIEWS

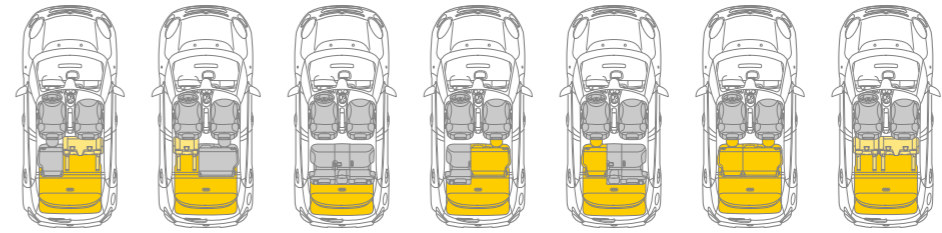
### CLASS-EXCLUSIVE DUAL-PANE SUNROOF\*

Paying homage to a long history of FIAT® innovation and original solutions to functionality, the 500L builds on traditional FIAT design cues with a small-wide architecture. This is the foundation for the open, loft-

like interior that offers over 44 percent more space than does the 500 Hatchback. Glass A- and D-pillars support a class-exclusive\* dual-pane “floating” roof that provides spectacular 360-degree views.

\*Based on WardsAuto Upper Small segmentation.

### SEVEN SEATING CONFIGURATIONS



### DECEPTIVELY SPACIOUS

Designers approached the interior from a driver-centric standpoint beginning with the 500L instrument panel, a blend of simplicity and Italian refinement. The panel includes the Electronic Vehicle Information Centre (EVIC) that clearly delivers vehicle and trip information, while the Uconnect® systems feature touchscreens loaded with media options. The thick-rimmed three-spoke steering wheel is available in colour-coordinated leather. Other essentials like automatic temperature control, transmission shifter and storage are all within convenient reach.

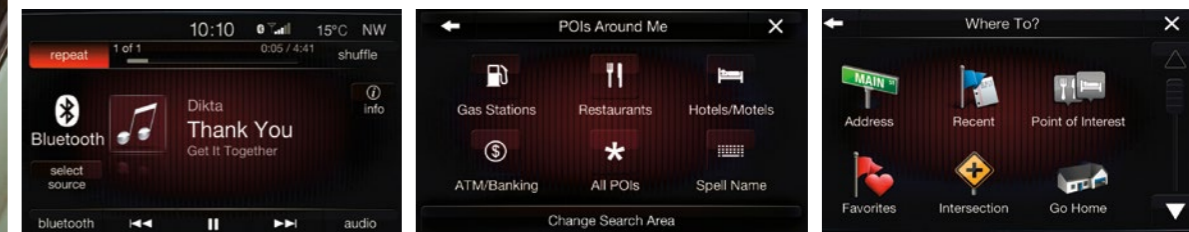


**LOFTY IDEALS.** Not just room for five, but a roomy room for five. 500L has the cargo volume to haul those large “can we get this antique rocking chair home?”-type loads. With its generous interior volume, 500L stores passengers just as efficiently — even your favourite basketball centre will enjoy lots of headroom and legroom. Plus, the convenience of 60/40 split-folding Tilt, Tumble & Slide rear seats make 500L flexible and accommodating for every size passenger or cargo load.



fiat®  
500L





# TOUCH

Our designers approach things from the driver and passengers' points of view, so every FIAT® will complement and enhance your extraordinary lifestyle. They know with all the time drivers spend behind the wheel, creating atmosphere is as essential as producing horsepower. You'll find personalized touches everywhere on each and every FIAT 500 model — from exterior chrome accents to soft-touch leather-wrapped shift knobs and steering wheels

to conveniently placed window and audio controls. Audio systems bathe the cabin in sound, including the available BeatsAudio™ premium sound system by Dr. Dre. Experience your favourite tunes with studio-quality sound, just the way the artist intended. With specifically tuned acoustics in each model, there's not a bad seat in the 500 house — musically or ergonomically. Available SiriusXM satellite radio<sup>5</sup> with one-year subscription ensures everyone's preference is covered.



# CONNECT

With Uconnect, you'll be able to stay connected to the world at large. The latest hands-free communication<sup>1</sup> delivers essential information and entertainment while letting you keep your hands on the wheel and your eyes focused on the road. The Uconnect 5.0 with 5-inch touchscreen is now standard on every 500/500L model, with a Uconnect 6.5-inch touchscreen available on 500L. They're home base for wide-ranging services like radio, phone, messaging<sup>6</sup> and much more.

Available turn-by-turn navigation<sup>2</sup> guides you from door to door, while Bluetooth® streaming audio allows music and calls to be streamed wirelessly from a Bluetooth-enabled smartphone or audio player, and is easily accessed through steering-wheel and touchscreen controls. The Media Hub is equipped with an auxiliary jack and USB port for charging and seamless operation of portable devices, keeping you connected and powered up.



# SAFETY LINE

We know that there is no cutting corners when it comes to the well-being of our drivers and passengers. The entire 500 family of vehicles is bolstered with structural side-guard door beams, crumple zones, and safety cage body structure and other reinforcements. It's just the beginning of a very robust list of standard and available safety and security features.

## ELECTRONIC STABILITY CONTROL (ESC)<sup>3</sup>

ESC is designed to assist drivers in maintaining control of their vehicles during extreme steering manoeuvres. ESC senses when a vehicle is starting to spin (oversteer) or plow (understeer) and attempts to correct the vehicle's course by automatically controlling the throttle and applying the brakes to individual wheels.

## SEVEN AIR BAGS<sup>7</sup>

Every FIAT comes with a sophisticated system of seven air bags to help protect passengers in the event of a collision. In the front seating positions, this includes advanced multistage front air bags, front seat-mounted side air bags for added thorax and pelvic protection, and a driver's knee blocker air bag. In addition, two side-curtain air bags help provide protection in the event of side impacts for both front and rear passengers.

## SENTRY KEY®

The Sentry Key Antitheft Engine Immobilizer System outsmarts would-be thieves by disabling the engine when unauthorized vehicle operation is attempted. The system is always at the ready, with no need to arm or activate. It works using ignition keys that have an embedded electronic chip programmed to one particular vehicle ... only those keys will start and operate that vehicle.

## TIRE PRESSURE MONITORING (TPM)

TPM takes the guesswork out of deciding if your tires are at the optimum fill level. It provides crucial, pinpointed information on your Electronic Vehicle Information Centre (EVIC) at the moment any tire pressure falls below safe driving criteria.

## PARKVIEW® REAR BACK-UP CAMERA<sup>4</sup>

The ParkView Rear Back-Up Camera provides a wide-angle view of the area immediately behind the 500L, giving the driver greater peace of mind before moving backwards at low speeds. Available.

## ENHANCED ACCIDENT RESPONSE SYSTEM (EARS)

EARS is a technological guardian that goes into full protection mode should your air bags<sup>7</sup> deploy. In the moment when the driver and passengers need it most, the system switches on the interior and hazard lamps and unlocks the doors, and then shuts off the fuel supply after the vehicle has fully stopped. In these moments, seconds count and EARS gives you that extra measure of safety.

## REVERSE-ACTIVATED REAR WIPER

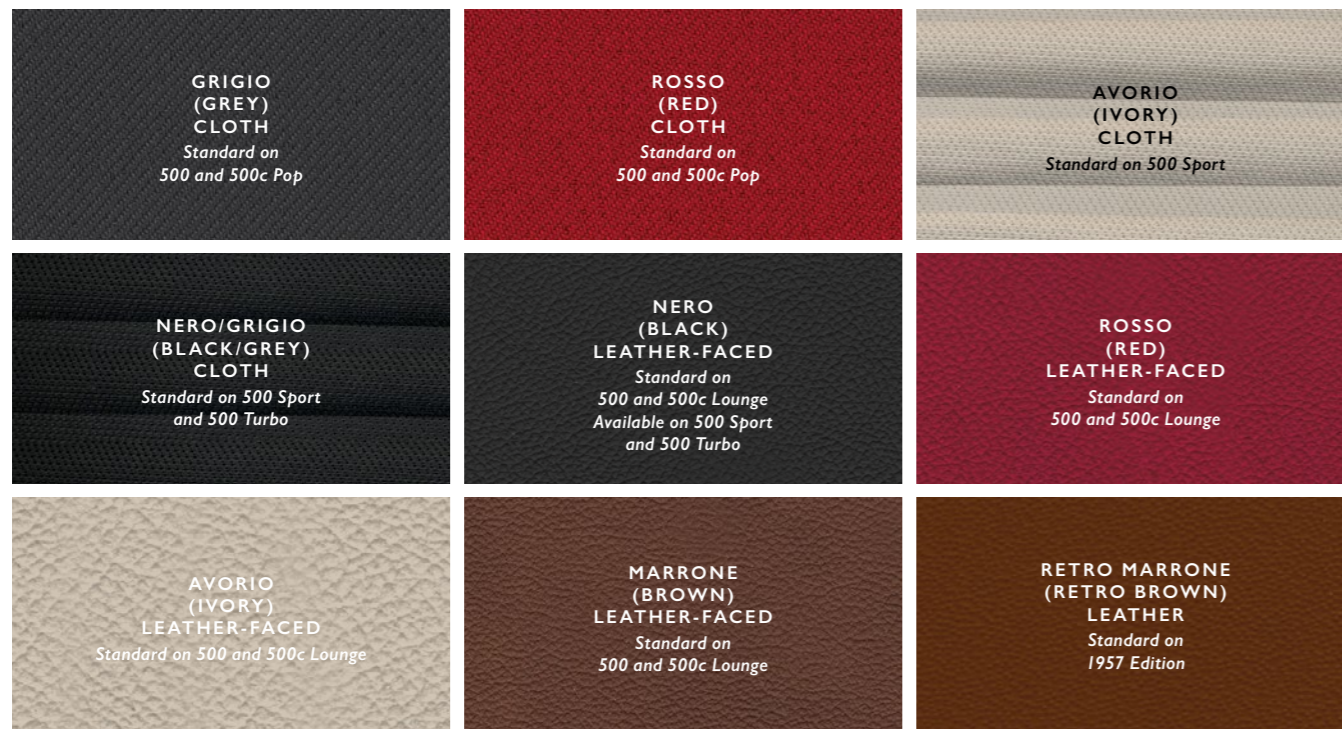
Standard on all FIAT® 500 models except Cabrio, this feature automatically turns on the rear wiper whenever the front windshield wipers are running and the car is shifted into Reverse. This helps enhance visibility when you're backing up and gives you that "all clear" feeling on those "not-so-clear" days.

## FIAT® 500/500c COLOURS\*



\*Not all colours available on all models.

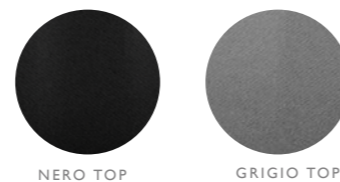
## INTERIOR COLOURS



## 500c ROOF COLOURS†



## 500 ABARTH® ROOF COLOURS



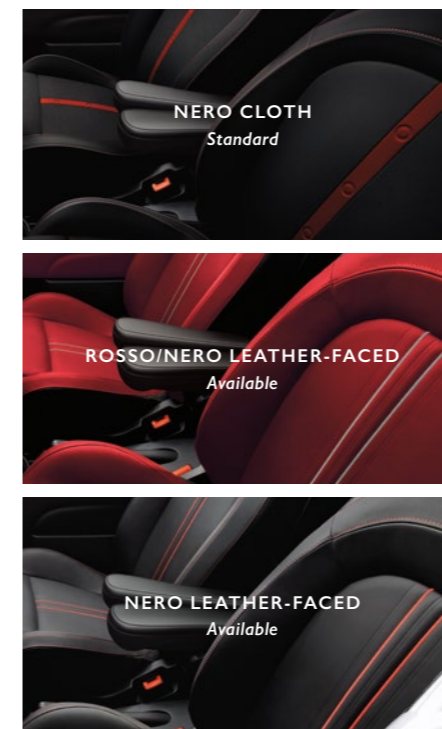
†Soft top colour availability depends on paint selection.

## FIAT® 500 ABARTH® COLOURS\*

- 1 NEW- BIANCO PERLA TRI-COAT  
Rosso stripe and mirror cap  
Nero stripe and mirror cap  
Grigio stripe and mirror cap
- 2 NEW- GRIGIO CENTRE  
Bianco stripe and mirror cap  
Rosso stripe and mirror cap  
Nero stripe and mirror cap
- 3 NEW- RHINO  
Bianco stripe and mirror cap  
Rosso stripe and mirror cap  
Nero stripe and mirror cap  
Grigio stripe and mirror cap
- 4 ROSSO  
Bianco stripe and mirror cap  
Nero stripe and mirror cap  
Grigio stripe and mirror cap
- 5 NEW- GIALLO MODERNA PERLA TRI-COAT  
Bianco stripe and mirror cap  
Nero stripe and mirror cap  
Rosso stripe and mirror cap
- 6 NEW- CELESTE BLU  
Bianco stripe and mirror cap  
Nero stripe and mirror cap  
Rosso stripe and mirror cap  
Grigio stripe and mirror cap
- 7 NERO PURO  
Bianco stripe and mirror cap  
Rosso stripe and mirror cap  
Grigio stripe and mirror cap

\*Not all colours available on all models.

## INTERIOR COLOURS



## FIAT® 500L COLOURS\*



## INTERIOR COLOURS



## 500 / 500C WHEELS



## 500 ABARTH® WHEELS



## 500L WHEELS



500 / 500c POP  
STANDARD EQUIPMENT



- POWERTRAIN**
- 1.4L MultiAir® 16V I-4 with 5-speed manual
  - 1.4L MultiAir 16V I-4 with 6-speed automatic
- STANDARD EQUIPMENT**
- INTERIOR AMENITIES**
- 2 front cup holders, 2 rear floor-mounted cup holders
  - 12-volt auxiliary power outlet
  - Body-colour instrument panel bezels
  - Electronic Vehicle Information Centre (EVIC)
  - Front floor mats and reading lamps
  - Leather-wrapped steering wheel with audio and cruise controls
  - Media Centre:
    - Auxiliary input jack
    - Hands-free communication<sup>1</sup> with Bluetooth® streaming audio
    - Uconnect® 5.0 multimedia centre
    - USB charging port in console
  - Overhead passenger assist handle (Cabrio)
  - Power windows, front one-touch down; power locks
  - Rear cargo shelf panel
  - Rearview mirror with microphone
  - Seating:
    - Cloth seats
    - Driver and front-passenger seat with memory return
    - Manual driver's height-adjustable seat
    - Rear 50/50 split-folding seat
  - Sun visors with vanity mirror
  - Tilt steering column

- EXTERIOR FEATURES**
- Bifunctional halogen projector headlamps
  - Body-colour fascia and power, heated exterior mirrors
  - Chrome exhaust tip and exterior door handles
  - Engine cover with FIAT badging
  - Power retractable soft top (Cabrio)
  - Rear spoiler (manual transmission)
  - Rear window wiper/washer (Hatchback)
  - Tinted windshield and glass windows
  - Wheels and Tires:
    - 15-inch wheels with wheel covers
    - P185/55R15 BSW all-season tires

- SAFETY & SECURITY**
- 7 air bags<sup>7</sup> including advanced multistage front, driver's knee blocker, supplemental front-seat-mounted side and supplemental side-curtain
  - Aspheric driver exterior mirror
  - Child Seat Anchor System (LATCH)
  - Electronic Stability Control<sup>3</sup> with Hill Start Assist, Traction Control and Electronic Brake-Force Distribution
  - Engine block heater
  - Four-wheel disc antilock brakes with Brake Assist
  - Reactive front head restraints<sup>8</sup>
  - Rear Park Assist<sup>4</sup> (Cabrio)
  - Remote keyless entry
  - Sentry Key® anti-theft engine immobilizer
  - Tire pressure monitoring display
  - Tire service kit

- CAPABILITY & FUNCTIONALITY**
- Electric power steering
  - Normal-duty suspension

- OPTIONAL EQUIPMENT**
- 15-inch Tech Silver Aluminum Wheels
  - Air Conditioning with Micron Filter
  - Compact Spare Tire
  - Mopar® Windscreen (Cabrio)
  - SiriusXM Satellite Radio<sup>5</sup> with One-Year Subscription

500 SPORT



- POWERTRAIN**
- 1.4L MultiAir 16V I-4 with 5-speed manual
  - 1.4L MultiAir 16V I-4 with 6-speed automatic
- ENHANCEMENTS vs. POP**
- 7-inch full-colour customizable in-cluster display
  - Air conditioning with micron filter
  - Chrome shift knob
  - Exterior:
    - Fog lamps
    - Rear spoiler
    - Red brake calipers
    - Side sills ground effects
    - Unique front and rear fascia
  - Leather-wrapped sport steering wheel
  - Overhead passenger assist handle
  - Seating:
    - Passenger armrest
    - Sport cloth seats
  - Security alarm
  - Sport suspension
  - Wheels and Tires:
    - 16-inch polished aluminum wheels with Technical Grey Pockets and Red accented centre caps
    - P195/45R16XL BSW all-season tires

- OPTIONAL EQUIPMENT**
- 16-inch Polished Aluminum Wheels with Dark Mineral Grey Pockets and Red Accented Centre Caps
  - Alpine® Premium Audio System
  - Comfort/Convenience Group
  - Compact Spare Tire
  - GPS Navigation<sup>2</sup>
  - Leather-faced Seats
  - Power Sunroof

500 / 500c LOUNGE



- POWERTRAIN**
- 1.4L MultiAir 16V I-4 with 5-speed manual
  - 1.4L MultiAir 16V I-4 with 6-speed automatic
- ENHANCEMENTS vs. POP**
- 7-inch full-colour customizable in-cluster display
  - Air conditioning with micron filter
  - Auto-dimming rearview mirror with microphone
  - Automatic temperature control
  - Chrome shift knob
  - Exterior:
    - Body-colour fascia with bright insert
    - Bodyside mouldings with 500 logo
    - Bright belt moulding
    - Chrome power, heated mirrors
    - Fog lamps
    - Panoramic glass roof (Hatchback)
  - Media Centre:
    - Alpine premium audio system
    - SiriusXM satellite radio<sup>5</sup> with one-year subscription
  - Overhead passenger assist handle
  - Rear Park Assist<sup>4</sup> (Cabrio)
  - Seating:
    - Heated front seats
    - Monochrome leather-faced seats
    - Passenger armrest
  - Security alarm
  - Wheels:
    - 15-inch premium Satin Carbon aluminum wheels (Hatchback)
    - 15-inch Tech Silver aluminum wheels (Cabrio)

- OPTIONAL EQUIPMENT**
- 15-inch Polished Aluminum Wheels with Tech Silver Pockets
  - BeatsAudio™ Premium Sound System
  - Compact Spare Tire
  - GPS Navigation<sup>2</sup>
  - Mopar Windscreen (Cabrio)
  - Power Sunroof (Hatchback)
  - Rear Park Assist<sup>4</sup> (Hatchback)

1957 EDITION



- POWERTRAIN**
- 1.4L MultiAir® 16V I-4 with 5-speed manual
  - 1.4L MultiAir 16V I-4 with 6-speed automatic
- ENHANCEMENTS vs. LOUNGE**
- Body-colour 16-inch aluminum retro wheels
  - Brown leather-wrapped door armrest surrounded by unique ivory door insert
  - Brown leather-wrapped shift knob
  - Front seatback map pockets
  - Ivory leather-wrapped steering wheel with brown leather insert
  - P195/45R16XL tires
  - Retro fascia with bright inserts
  - Retro FIAT® badging
  - Retro Marrone (Brown) leather-faced seats
  - Unique brown key fob cover with "1957" graphic
  - White painted roof
  - White power, heated exterior mirrors

- OPTIONAL EQUIPMENT**
- BeatsAudio™ Premium Sound System
  - Compact Spare Tire
  - GPS Navigation<sup>2</sup>
  - Power Sunroof
  - Rear Park Assist<sup>4</sup>

500 TURBO



- POWERTRAIN**
- 1.4L MultiAir 16V I-4 Turbo with 5-speed manual
  - 1.4L MultiAir 16V I-4 Turbo with 6-speed automatic
- ENHANCEMENTS vs. SPORT**
- 3.35 final drive ratio
  - 16-inch polished aluminum wheels with Gloss Black pockets and Red accented centre caps
  - Alpine® premium audio system
  - Exterior:
    - Bolder side sills ground effects
    - Gloss Black headlamp, taillamp and parking lamp treatments
    - Sport-tuned single exhaust
    - Unique performance-designed front fascia
  - Leather-wrapped sport steering wheel and shift knob accented with silver stitching
  - Performance four-wheel disc antilock brakes
  - Performance suspension
  - Sport-styled seating with silver stitching
- OPTIONAL EQUIPMENT**
- 16-inch Hyper Black Aluminum Wheels with Black Pockets and Red Accented Centre Caps
  - BeatsAudio Premium Sound System
  - Comfort/Convenience Group
  - GPS Navigation<sup>2</sup>
  - Leather-faced Seats
  - Power Sunroof
  - Rear Park Assist<sup>4</sup>

500 ABARTH® / ABARTH CABRIO  
STANDARD EQUIPMENT



- POWERTRAIN & PERFORMANCE**
- 1.4L 16V MultiAir I-4 Turbo with 5-speed manual
  - 1.4L 16V MultiAir I-4 Turbo with 6-speed automatic
  - Performance suspension
  - Sport mode
  - Turbo boost gauge
- INTERIOR AMENITIES**
- 7-inch customizable in-cluster display
  - Alpine premium audio system
  - Aluminum pedal covers
  - Driver's- and front-passenger seat with memory return
  - Driver's-seat height adjuster
  - Hands-free communication<sup>1</sup> with Bluetooth® streaming audio
  - Leather-wrapped instrument-panel cluster and shift knob
  - Perforated leather-wrapped steering wheel with audio and cruise control
  - Performance cloth high-back bucket seats
  - Power locks and windows, front one-touch down
  - Uconnect 5.0 multimedia centre

- EXTERIOR FEATURES**
- 3-mode Electronic Stability Control<sup>3</sup>
  - 7 air bags<sup>7</sup>
  - 16-inch aluminum wheels with Grey painted pockets, Red accented centre caps and Red brake calipers
  - Abarth exterior badging
  - Bifunctional halogen projector headlamps
  - Black headlamp, taillamp and parking lamp treatments
  - Body-colour fascia and side sills ground effects
  - Body-colour power, heated mirrors
  - Chrome exterior door handles
  - Dual bright exhaust tips
  - Fog lamps
  - P195/45R16XL tires
  - Performance four-wheel disc antilock brakes
  - Power retractable soft top (Cabrio)
  - Rear Park Assist<sup>4</sup> (Cabrio)
  - Rear performance spoiler (Hatchback)
  - Remote keyless entry
  - Torque Transfer Control

- OPTIONAL EQUIPMENT**
- 16-inch Hyper Black Aluminum Wheels with Black Painted Pockets
  - 17-inch Forged Aluminum Gloss Bronze Wheels
  - BeatsAudio Premium Sound System
  - Comfort/Convenience Group
  - GPS Navigation<sup>2</sup>
  - Power Sunroof (Hatchback)
  - Premium Leather-faced Seats
  - Rear Park Assist<sup>4</sup> (Hatchback)
  - Rosso, Nero, Grigio or Bianco Mirror Cap with Bodyside Stripe

MULTIMEDIA CENTRE

Uconnect® 5.0 multimedia centre with 5-inch touchscreen

- 5-inch high-definition full-colour touchscreen display
- AM/FM
- Auxiliary input jack
- Hands-free communication<sup>1</sup> with Bluetooth streaming audio
- Preset text reply and incoming voice text message reader<sup>6</sup>
- USB charging port

PACKAGE DETAILS

COMFORT/CONVENIENCE GROUP

- Automatic temperature control with micron filter
- Heated front seats
- Security alarm (Turbo)
- SiriusXM satellite radio<sup>5</sup> with one-year subscription

POWER AND FUEL ECONOMY

Based on 2016 *EnerGuide* fuel consumption ratings. Government of Canada test methods used. Your actual fuel consumption will vary based on driving habits and other factors. For *EnerGuide* information, please ask your retailer or visit the Government of Canada website: [www.vehicles.nrcan.gc.ca](http://www.vehicles.nrcan.gc.ca)

	ENGINE	TRANSMISSION	HORSE-POWER	TORQUE (LB-FT)	L/100 KM (MPG)	
					CITY	HWY
Cabrio	1.4L MultiAir I-4	5-speed Manual	101	98	7.9 (36)	6.3 (45)
	1.4L MultiAir I-4	6-speed Automatic	101	98	8.7 (32)	6.9 (41)
Hatchback	1.4L MultiAir I-4	5-speed Manual	101	98	7.6 (37)	5.9 (48)
	1.4L MultiAir I-4	6-speed Automatic	101	98	8.7 (32)	6.9 (41)
Abarth	1.4L MultiAir 16V I-4 Turbo	5-speed Manual	135	150	8.5 (33)	6.9 (41)
	1.4L MultiAir 16V I-4 Turbo	6-speed Automatic	135	150	9.6 (29)	7.3 (39)

SPECIFICATIONS

	500	500c	500 Abarth	500 Abarth Cabrio
<b>EXTERIOR, mm (in)</b>				
Overall Height	1519 (59.8)	1519 (59.8)	1490 (58.7)	1504 (59.2)
Overall Width with Side Mirrors	1867 (73.5)	1867 (73.5)	1867 (73.5)	1867 (73.5)
Overall Length	3546 (139.6) / Turbo: 3668 (144.4)		3546 (139.6)	3667 (144.4)
<b>INTERIOR, mm (in)</b>				
Headroom	FRONT 989 (38.9)	REAR 903 (35.6)	FRONT 980 (38.6)	REAR 935 (36.8)
Headroom with Sunroof	956 (37.6)	903 (35.6)	N/A	N/A
Legroom	1034 (40.7)	805 (31.7)	1034 (40.7)	805 (31.7)
Hip Room	1217 (47.9)	1082 (42.6)	1217 (47.9)	1082 (42.6)
Shoulder Room	1255 (49.4)	1179 (46.4)	1255 (49.4)	1179 (46.4)
<b>VOLUMES AND CAPACITIES</b>				
Cargo, Rear Seat Up, L (cu ft)	269 (9.5)	153 (5.4)	269 (9.5)	153 (5.4)
Cargo, Rear Seat Folded, L (cu ft)	742 (26.2)	663 (23.4)	759 (26.8)	663 (23.4)
Seating Capacity	4	4	4	4
Fuel Tank Capacity, L (imp gal)	40 (8.8)	40 (8.8)	40 (8.8)	40 (8.8)

500L POP  
STANDARD EQUIPMENT



POWERTRAIN

- 1.4L MultiAir® 16V I-4 Turbo with 6-speed manual
- 1.4L MultiAir 16V I-4 Turbo with 6-speed Euro Twin-Clutch automatic

STANDARD EQUIPMENT

INTERIOR AMENITIES

- Air conditioning with micron filter
- Body-colour instrument panel
- Electronic Vehicle Information Centre (EVIC)
- Front and rear floor mats
- Front reading lamps
- Interior observation mirror
- Media Centre:
  - 6 speakers
  - Hands-free communication with Bluetooth® streaming audio<sup>1</sup>
  - Uconnect® 5.0 multimedia centre
  - USB port and auxiliary input jack
- Multi-position shelf panel holds 90.7 kg (200 lb)
- Passenger assist handles
- Power locks
- Power windows with one-touch up and down
- Seating:
  - Cloth driver and front-passenger height-adjustable seats
  - Rear 60/40 folding seat with Tilt, Tumble & Slide
- Steering wheel-mounted audio and cruise controls
- Sun visors with vanity mirror
- Tilt/telescoping steering wheel

EXTERIOR FEATURES

- Bifunctional halogen projector headlamps
- Black power, heated mirrors
- Body-colour fascia and bodyside moulding
- Body-colour roof
- Bright door handles
- Bright exhaust tip
- Rear window defroster
- Tinted glass windows
- Wheels and Tires:
  - 16-inch steel wheels with wheel covers
  - P205/55R16 BSW all-season tires

SAFETY & SECURITY

- Air bags<sup>2</sup>, including advanced multistage front, driver's knee blocker, supplemental front-seat-mounted side and supplemental side-curtain
- Antitheft engine immobilizer
- Aspheric driver exterior mirrors
- Child Seat Anchor System (LATCH)
- Electronic Stability Control<sup>3</sup> with Hill Start Assist, Traction Control and Electronic Brake-Force Distribution
- Engine block heater
- Four-wheel disc antilock brakes with Brake Assist
- Reactive front head restraints<sup>8</sup>
- Remote keyless entry
- Security alarm
- Tire pressure monitoring display
- Tire service kit

CAPABILITY & FUNCTIONALITY

- Electric power steering
- Normal-duty suspension

OPTIONAL EQUIPMENT

- Compact Spare Tire
- Safety Group
- SiriusXM Satellite Radio<sup>5</sup> with One-Year Subscription

500L SPORT



POWERTRAIN

- 1.4L MultiAir 16V I-4 Turbo with 6-speed manual
- 1.4L MultiAir 16V I-4 Turbo with 6-speed AISIN® heavy-duty automatic

ENHANCEMENTS vs. POP

- 16-inch aluminum wheels
- 115-volt auxiliary power outlet
- Air conditioning with dual-zone automatic temperature control
- Auto-dimming rearview mirror
- Chrome and leather-wrapped shift knob
- Exterior:
  - Body-colour mirrors
  - Deep-tint sunscreen glass
  - Fog lamps
- Front-seat centre console
- Leather-wrapped steering wheel
- Seating:
  - Heated front seats
  - Power 4-way driver's lumbar adjust
  - Sport cloth seats
- SiriusXM satellite radio<sup>5</sup> with one-year subscription
- Sun visors with illuminated vanity mirrors
- Universal garage door opener<sup>9</sup>
- Vinyl-wrapped instrument panel

OPTIONAL EQUIPMENT

- 16-inch Aluminum Wheels with Black Pockets
- BeatsAudio™ Premium Sound System
- Bianco (White) Roof
- Compact Spare Tire
- GPS Navigation<sup>2</sup>
- Nero (Black) Roof
- Power Dual-Pane Sunroof
- Safety Group
- Uconnect 6.5 Multimedia Centre

500L TREKKING



POWERTRAIN

- 1.4L MultiAir 16V I-4 Turbo with 6-speed manual
- 1.4L MultiAir 16V I-4 Turbo with 6-speed AISIN heavy-duty automatic

ENHANCEMENTS vs. SPORT

- Exterior:
  - Body-colour fascia with accents
  - Chrome bodyside moulding
  - Sill moulding
  - Unique front and rear fascia
  - Wheel arch mouldings
- Interior:
  - Body-colour instrument panel
- Premium cloth seats
- Wheels and Tires:
  - 17-inch aluminum wheels with Black pockets
  - P225/45R17 BSW all-season tires

OPTIONAL EQUIPMENT

- 17-inch Aluminum Wheels
- BeatsAudio Premium Sound System
- Bianco (White) Roof
- Compact Spare Tire
- GPS Navigation<sup>2</sup>
- Leather-faced Seats
- Nero (Black) Roof
- Power Dual-Pane Sunroof
- Safety Group
- Stone Instrument Panel
- Uconnect 6.5 Multimedia Centre

500L URBANA



POWERTRAIN

- 1.4L MultiAir® 16V I-4 Turbo with 6-speed manual
- 1.4L MultiAir 16V I-4 Turbo with 6-speed AISIN® heavy-duty automatic

ENHANCEMENTS vs. TREKKING

- 17-inch Matte Black aluminum wheels
- BeatsAudio™ premium sound system
- Black leather-wrapped steering wheel
- Black roof
- Gloss Black instrument panel bezels
- Matte Black bodyside mouldings
- Matte Black exterior mirrors
- Satin door handles
- Sport Cloth low-back bucket seats

OPTIONAL EQUIPMENT

- Compact Spare Tire
- GPS Navigation<sup>2</sup>
- Power Dual-Pane Sunroof
- Rosso (Red) Roof
- Safety Group
- Uconnect® 6.5 Multimedia Centre

500L LOUNGE



POWERTRAIN

- 1.4L MultiAir 16V I-4 Turbo with 6-speed manual
- 1.4L MultiAir 16V I-4 Turbo with 6-speed AISIN heavy-duty automatic

ENHANCEMENTS vs. SPORT

- 6 premium speakers
- Exterior:
  - Chrome bodyside moulding insert
  - Chrome mirrors
- Park-Sense® Rear Park Assist<sup>4</sup>
- ParkView® Rear Back-Up Camera<sup>4</sup>
- Premium vinyl-wrapped instrument panel
- Rear-seat armrest with cup holder
- Seating:
  - Leather-faced seats
  - Power driver and passenger 4-way lumbar adjust

OPTIONAL EQUIPMENT

- 17-inch Aluminum Wheels
- 17-inch Machined Aluminum Wheels with Black Pockets
- 17-inch Machined Aluminum Wheels with White Pockets
- BeatsAudio Premium Sound System
- Bianco (White) Roof
- Compact Spare Tire
- GPS Navigation<sup>2</sup>
- Nero (Black) Roof
- Power Dual-Pane Sunroof
- Uconnect 6.5 Multimedia Centre

PACKAGE DETAILS

LEATHER-FACED SEATS

- Premium vinyl-wrapped instrument panel
- Rear-seat armrest with cup holder

SAFETY GROUP

- Park-Sense Rear Park Assist<sup>4</sup>
- ParkView Rear Back-Up Camera<sup>4</sup>

MULTIMEDIA CENTRE

Uconnect 5.0

- 5-inch touchscreen
- AM/FM
- Auxiliary input jack
- Hands-free communication<sup>1</sup> with Bluetooth® streaming audio
- iPod® integration
- Text response<sup>6</sup>
- USB

Uconnect 6.5

- Uconnect 5.0 features plus:
  - 6.5-inch touchscreen
  - Available GPS Navigation<sup>2</sup> (factory-installed or retailer-activated<sup>3</sup>)
  - SiriusXM satellite radio<sup>5</sup> with one-year subscription

POWER AND FUEL ECONOMY

Based on 2016 *EnerGuide* fuel consumption ratings. Government of Canada test methods used. Your actual fuel consumption will vary based on driving habits and other factors. For *EnerGuide* information, please ask your retailer or visit the Government of Canada website: [www.vehicles.nrcan.gc.ca](http://www.vehicles.nrcan.gc.ca)

ENGINE	TRANSMISSION	HORSE-POWER	TORQUE (LB-FT)	L/100 KM (MPG)	
				CITY	HWY
1.4L MultiAir 16V I-4 Turbo	6-speed manual	160	184	9.3 (30)	7.1 (40)
1.4L MultiAir 16V I-4 Turbo	6-speed Euro Twin-Clutch automatic	160	184	9.9 (29)	7.2 (39)
1.4L MultiAir 16V I-4 Turbo	6-speed AISIN heavy-duty automatic	160	184	10.6 (27)	7.8 (36)

SPECIFICATIONS

EXTERIOR, mm (in)		
Overall Height	1669 (65.7)	
Overall Width with Side Mirrors	2037 (80.2)	
Overall Length	4249 (167.3)	
INTERIOR, mm (in)		
	FRONT	REAR
Headroom	1034 (40.7)	983 (38.7)
Headroom with Sunroof	1026 (40.4)	965 (38.0)
Legroom	1016 (40)	932 (36.7)
Hip Room	1394 (54.9)	1255 (49.4)
Shoulder Room	1455 (57.3)	1387 (54.6)
VOLUMES AND CAPACITIES		
Cargo, Rear Seat Up, L (cu ft)	603 (21.3)	
Seating Capacity	5	
Fuel Tank Capacity, L (gal)	50 (11)	

ABOUT THIS CATALOGUE: Since the time of printing, some of the information you'll find in this catalogue may have been updated. Visit your FIAT Studio for details. Some of the equipment shown or described throughout this catalogue is available at extra cost. Specifications, descriptions, illustrative materials and all competitive comparisons contained herein are as accurate as known at the time this publication was approved for printing. FCA Canada Inc. reserves the right to make changes at any time without notice and without incurring obligation. For the price of the model with the equipment you desire, or verification of specifications contained herein, visit your FIAT Studio. ©2016 FCA Canada Inc. All Rights Reserved. Chrysler, Dodge, Jeep, Ram, Mopar, SRT, Park-Sense, ParkView, Sentry Key and Uconnect are registered trademarks of FCA US LLC. FIAT and MultiAir are registered trademarks of FCA Group Marketing S.p.A., used under licence by FCA US LLC. Abarth and the Scorpion design are registered trademarks of FIAT Auto S.p.A., used under licence by FCA Group LLC. Alpine and the Alpine logo are registered trademarks of Alpine Electronics, Inc. Bluetooth is a registered trademark of Bluetooth SIG, Inc. Sirius, XM and related marks and logos are trademarks of SiriusXM Radio Inc. Beats by Dr. Dre, Beats, BeatsAudio and the b logo are the property of Beats Electronics, LLC. Facebook is a registered trademark of Facebook, Inc. iPod is a registered trademark of Apple Inc. All rights reserved. Twitter is a service mark of Twitter, Inc. AISIN is a registered trademark of Aisin Seiki.

WARRANTIES: 2016 FIAT vehicles are backed by a 5-year or 100,000-kilometre\* fully transferable Powertrain Limited Warranty with \$0 deductible plus 24-hour roadside assistance! Basic Warranty coverage is for 3 years or 60,000 kilometres.\* Rust-through coverage on all body sheet metal is for 3 years.

\*Whichever comes first. Some conditions may apply. †The 5-Year/100,000-Kilometre Powertrain Limited Warranty does not apply to vehicles sold for certain commercial uses. Visit your FIAT Studio for full details.

DISCLAIMERS: (1) Driving while distracted can result in loss of vehicle control. Only use mobile phones and other devices, even with voice commands, when it is safe to do so. Voice commands of phone require a Bluetooth-compatible phone. (2) Never program while driving. GPS mapping and available 3D navigation may not be detailed or available in all areas or reflect current road regulations. Additional fees will apply for Retailer-Activated Navigation. (3) No system can repeal the laws of physics or overcome careless driving actions. Performance is limited by available traction, which snow, ice and other conditions can affect. When the warning lamp flashes, the driver needs to use less throttle and adapt speed and driving behaviour to prevailing road conditions. (4) This is a driver convenience system, not a substitute for active driver involvement. The driver must remain aware of his/her surroundings and be prepared to take corrective action to avoid collisions. (5) Requires SiriusXM radio subscriptions governed by SIRIUS terms and conditions available at [siriusxm.ca](http://siriusxm.ca) (6) Preset voice-to-text messaging and incoming text message reading require a MAP-enabled phone. (7) The advanced front air bags in this vehicle are certified to the federal regulations for advanced air bags. Children 12 years old and younger should always ride buckled up in a rear seat. Infants in rear-facing child restraints should never ride in the front seat of a vehicle with a passenger front air bag. All occupants should always wear their lap and shoulder belts properly. (8) Always sit properly with the head restraint properly adjusted. Never place anything in front of the head restraint. (9) Not compatible with all garage door openers.

fiatcanada.com



Like us on:  
[facebook.com/fiatcanada](https://facebook.com/fiatcanada)



Follow us on:  
[twitter.com/fiatcanada](https://twitter.com/fiatcanada)



Sign up for updates at:  
[fiatcanada.com](https://fiatcanada.com)