

POLICE AND SPECIAL SERVICE VEHICLES



THE ALL-NEW 2013 **FORD POLICE INTERCEPTORS**



FLEET

You're sworn to serve. They're built to serve – *you*.



TWO ALL-NEW POLICE INTERCEPTORS = ONE FAMILY WITH A GREAT DEAL IN COMMON. The Police Interceptor® Sedan and Utility hail from the same platform. They share a host of safety, performance, durability, transport and mobile-office components, leading to many service, maintenance and upfit-friendly commonalities – all of which help to **consolidate bottom-line savings**. Both Interceptors come with an **identical bumper-to-bumper limited warranty¹ that covers every shared element**, including: all-wheel drive, V6 engine with 6-speed transmission, police-tuned suspension, high-performance brakes, high-volume cooling system, 220-amp alternator, heavy-duty battery, 18" 5-spoke steel wheels and unique tires. With **more than 3,400 Ford dealerships across North America**, there's no lack of family support.

SEDAN AND UTILITY MODELS: PURPOSE-BUILT IN THE USA² SPECIFICALLY FOR POLICE DUTY. Ford Police Interceptors are the genuine articles. Based on CVPI (Crown Victoria Police Interceptor) real-world experience, **they're the first-and-only pursuit-rated, all-wheel-drive models produced exclusively for North American law enforcement agencies.** *Engineered in Michigan. Powered in Ohio. Assembled in Illinois.*

¹See your dealer for warranty details. ²Assembled in the USA with domestic and foreign parts.



OFFICIALLY VALIDATED AS PURSUIT-RATED. In separate testing by the Michigan State Police and Los Angeles County Sheriff's Department, the Ford Police Interceptor Sedan and Utility **passed with flying colors in terms of acceleration, braking, handling and pursuit.**

Always on guard: Officer protection is priority one.

75-MPH REAR-END CRASH-TESTED – AND PASSED.

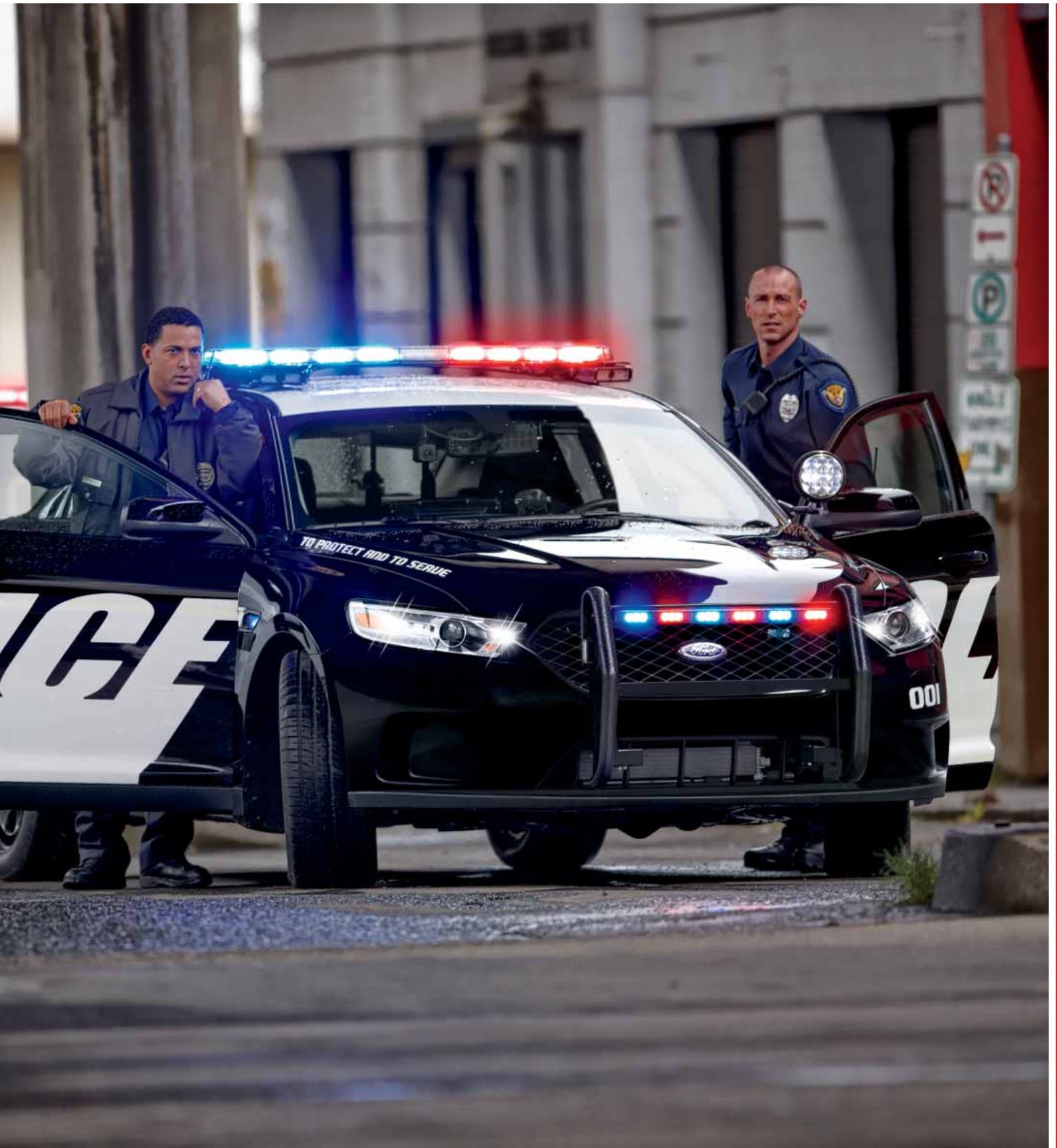
Ford Police Interceptors continue this extreme got-your-back tradition: They're **the only vehicles certified to the 75-mph rear-impact standard.**

FRONT DOOR PANELS GO BALLISTIC.¹ Manufactured by BLS Textiles, each panel is certified to full NIJ Level III specifications² – National Institute of Justice Standard 0108.01. Per LAPD (Los Angeles Police Department) requirements, they're also **designed to withstand special-threat rounds**² – 7.62x39 mm mild steel core type 56, plus 5.56x45 mm M193 and M855. Ballistic panels are available for the driver and passenger doors.

A SENSE OF SECURITY SHOULD HANDCUFFS FAIL. Steel intrusion plates are built into the front seat backs. And **rear door-lock plungers**¹ are hidden – each one is manually operable only by the officers in front.

VIRTUAL FORCE FIELD OF ASSURANCE. Safety cell construction works to help direct the force of a collision around the occupant compartment. **Crumple zones** help absorb and dissipate the energy of a crash. A **hydroformed cross-vehicle beam** runs between the door frames, solidifying each body side. Advanced ultra-high-strength steels, including **boron steel**, lend mightily to protection. And just in case, the sophisticated **Personal Safety System**,TM innovative **Safety Canopy**[®] System, and front-seat side airbags³ are at the ready.





Beyond all-wheel drive, this is All-Wheel Pursuit.
(Great for chasing bad guys on bad roads.)



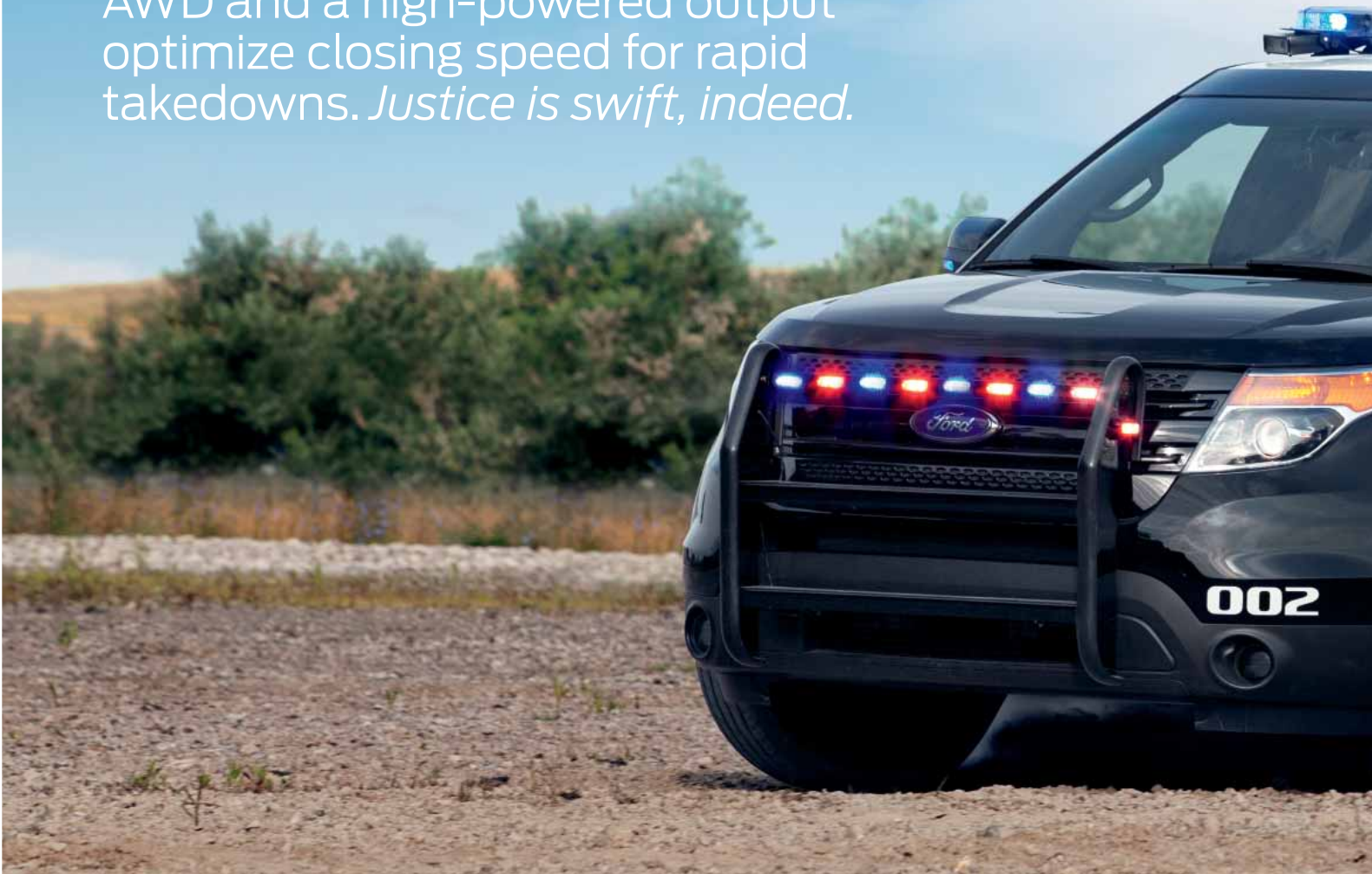
¹Remember that even advanced technology cannot overcome the laws of physics. It's always possible to lose control of a vehicle due to inappropriate driver input for the conditions. Visit fleet.ford.com for more information on AdvanceTrac with or without RSC[®] (Roll Stability Control[™]).

THE CONFIDENCE OF ALL-SEASON, ALL-WEATHER HANDLING – ALL THE TIME. From the only manufacturer with over 60 years of continuous service on the nation's first-responder force comes a **Police Interceptor® standard: Intelligent AWD designed and calibrated to complement pursuit driving.** To place more control directly in the officer's grip, this self-activating system preemptively distributes torque among all 4 wheels before wheelslip occurs. AWD helps improve traction in inclement conditions or on loose dirt and gravel, plus it's **equally impressive off the line or in the turns on completely dry roads.** It was co-developed with EVOC (Emergency Vehicle Operator Course) instructors for utmost responsiveness and performance in challenging situations.

ADVANCETRAC® STABILITY.¹ Monitoring Interceptor cornering behavior – through steering angle, lateral acceleration and an arsenal of yaw sensors – AdvanceTrac automatically makes braking and throttle adjustments to help maintain control. It utilizes the Anti-Lock Brake System (ABS) and traction control whenever wheelslip, understeer, oversteer or roll motion is detected.



AWD and a high-powered output optimize closing speed for rapid takedowns. *Justice is swift, indeed.*



POLICE-CALIBRATED PERFORMANCE. When circumstances call for aggressive action, count on Ford Police Interceptors to nab lawbreakers. A threesome of available V6 powerplants each **pump out greater power than the 250-hp 4.6L V8 in the CVPI.** The **torque-happy, twin-turbocharged, direct-injection EcoBoost® V6¹** – exclusive to the Sedan – generates **365 hp** and, at max torque, delivers an immediate 350 lb.-ft. of force. A **288-hp 3.5L flex-fuel² V6** is standard on Sedan. Output for the 3.7L flex-fuel V6 on the Utility model is **304 horses.** All that new-tech muscle is flexed **efficiently**, allowing municipalities to better meet both financial and environmental goals.

ALL SYSTEMS GO. Shift points for the **6-speed transmission** are programmed specifically to maximize acceleration. **Electric power-assisted steering (EPAS)** helps ensure light turning effort at low speeds. And suspension components are tuned for deft cornering and maneuverability at any speed.

5-YEAR/100,000-MILE FORD POWERTRAIN COVERAGE³ – FEATURING REPLACEMENT OF NORMAL “WEAR AND TEAR” POWERTRAIN COMPONENTS THAT REQUIRE PERIODIC ATTENTION – IS STANDARD ON 2013 POLICE INTERCEPTORS. This guaranteed assurance is further proof of the faith held in the dependability of every single Interceptor. It’s the ultimate in component coverage, backed by the strength and stability of Ford Motor Company, honored at all Ford Dealerships, and fixed with Genuine Ford Parts by factory-trained and certified technicians.

¹Available. ²Flex fuel is not available in states with California emissions standards: CA, CT, MA, MD, ME, NJ, NY, OR, PA, RI, VT and WA. ³Whichever comes first. The 5-year/100,000-mile powertrain coverage is an Extended Service Plan – with zero deductibles – that’s standard on all Police Interceptors. See your dealer for full details. ⁴Electronically limited in police powertrain calibrations.



YOUR CHOICE: 3 ALL-NEW, ALL-POWERFUL V6 POWERTRAINS ARE PAIRED WITH STANDARD AWD TO OFFER DISTINCT PERFORMANCE ADVANTAGES OVER THE CVPI AND THE COMPETITION.

	 2013 Sedan 3.5L Ti-VCT V6 FFV²	 2013 Sedan 3.5L EcoBoost V6	 2013 Utility 3.7L Ti-VCT V6 FFV²	 2011 CVPI 4.6L OHC V8 FFV²
Horsepower (hp @ rpm)	288 @ 6,500	365 @ 5,500	304 @ 6,500	250 @ 5,000
Torque (lb.-ft. @ rpm)	254 @ 4,000	350 @ 1,500 - 5,000	279 @ 4,000	297 @ 4,000
Drivetrain	AWD/FWD (optional)	AWD	AWD/FWD (optional)	RWD
Top speed ⁴ (mph)	131	148	131	131
Fuel economy (mpg)	17 city/24 hwy (AWD) 18 city/26 hwy (FWD)	16 city/23 hwy	16 city/21 hwy (AWD) 16 city/22 hwy (FWD)	14 city/21 hwy
				



Purpose-built wheels, tires and brakes.



Because there will be bumps in the line of duty.

HEAVY-DUTY WHEELS ARE TEAMED WITH EXCLUSIVE POLICE-PURPOSED TIRES. Hefty 18" steel wheels are designed to withstand the punishment of daily duty no matter where the trail leads. The 5-spoke design lets the brakes breathe freely and stay as cool as possible. Unique Ford Police Interceptor® tires are expressly constructed to maximize grip, handling, roll and rigidity no matter the weather. They keep stopping distances to a minimum, and tread-wear longevity is equally impressive. A Tire Pressure Monitoring System (TPMS) is standard, and there's even a TPMS sensor on the *full-size spare*.

HEAVY-DUTY ANTI-LOCK DISC BRAKES CONTRIBUTE TO EXTREME HIGH PERFORMANCE. Police Interceptors don't just need to go fast, they must also come to rapid halts – under control. Developed in association with the Los Angeles County Sheriff's Department and the Michigan State Police, this unique system strikes an ideal balance between stopping power and long wear life. It boasts an increased swept area via **larger 13" diameter rotors** versus the 11" versions on the CVPI. The **unique inverted hat-vented rotor design and unique calipers** add to the high thermal capacity.

HEAVY-DUTY SUSPENSIONS RESPOND IN THE NAME OF CONTROL, CAPABILITY AND COMFORT. For smooth, predictable, high-speed handling at every turn, the **front and multilink rear suspensions are fully independent – each one also incorporates a brawny stabilizer bar** to combat body lean. Helical coil springs and stiffened, gas-pressurized hydraulic shocks are tuned to the rigors of police work. Premium hubs and bearings are extra large for long-term durability.

HEAVY-DUTY COOLING SYSTEM REGULATES EXTREME HEAT. An extra-large, high-volume radiator, engine oil cooler and transmission fluid cooler work in concert with the police-calibrated fan settings, mesh grille and wide airflow openings to ensure optimal operation in times of pursuit and periods of idling.

HEAVY-DUTY 220-AMP ALTERNATOR MEETS DEMANDS. State-of-the-art support for radar, lights, radios, cameras, computers, printers and the like.



Protective deflector plate.

DEFLECTOR PLATE SHIELDS THE UNDERBODY.

The undercarriage and engine compartment are up to daily-duty punishment with this **unique Ford designed underbody cover** standard on sedan. As the name implies, it helps prevent damage by deflecting road debris and guarding against scrapes – which is especially crucial for the oil pan. It’s shaped to facilitate oil-filter changes.



FLEET KEY IS SIMPLICITY AT ITS FINEST.

The Police Interceptor key doesn’t contain a microchip, so the cost of making a copy or replacement is the going rate at the local hardware store. Plus, the entire fleet can be set up to run with one common key design. **A trio of key lock cylinders** – on the front doors and decklid/liftgate – provide quick, reliable access.





Ergonomic Police Interceptor Sedan cockpit.

Time to take the law into your own hands.

PURPOSE-BUILT WITHIN. How an officer enters, exits, sits, shifts gears and uses electronics are just a few of the features meticulously accounted for within the Police Interceptor® cabin. Amenities range from **power-adjustable pedals** **A** and a **tilt steering column** **B** (it's also telescoping on Sedan), to the generous **recessed universal top tray** **C** atop the instrument panel that's ideal for police equipment. A **pair of MyFord® 4.2" screens** **D** – located on the center stack of the front console and in the instrument gauge cluster next to the **certified speedometer** **E** – relay vital information at a glance. For security purposes, the **push-button trunk-release switch** **F** (a Sedan exclusive) is battery powered; no key required.

CONNECT WITH VOICE-ACTIVATED FORD SYNC®^{1,2} Just **press a button** **G** on the steering wheel and **speak commands**. Once paired, SYNC recognizes a cell phone and automatically supports hands-free voice calling. The **SYNC Services** account provides **turn-by-turn driving directions**,² **custom traffic alerts**,² **911 Assist®** and **much more**. SYNC also allows verbal command of devices that are plugged into the USB port. (Visit ford.com/sync for details on the numerous benefits.)

RADAR DETECTION. Before changing lanes, **BLIS® (Blind Spot Information System) with cross-traffic alert**^{1,3} can help detect a vehicle in the way – the warning sign is an amber light in the corresponding sideview mirror. When slowly backing out of a spot, this system's radar also issues an audible alert, flashes a light in the sideview mirror, and notifies via the message center if any vehicles are detected behind.

MORE WAYS TO RAISE AWARENESS. The **ultrasonic Reverse Sensing System**¹ helps to mitigate rear vehicle scuffs and bumps. It issues audible notifications whenever objects are recognized within 6' as the Police Interceptor backs up at slow speeds. In addition, or instead, opt for a **rear view camera**¹ to display a full-color, real-time image of what's happening behind the vehicle in the rearview mirror.

¹Available. ²Driving while distracted can result in loss of vehicle control. Only use mobile phones and other devices, even with voice commands, when it is safe to do so. Traffic alerts and turn-by-turn directions available in select markets. Message and data rates may apply. Not all features are compatible with all phones. ³BLIS replaces standard integrated blind spot mirrors.



Convenient console mounting plate.



High-tech Ford SYNC with remappable switches.

AFTERMARKET COST-SAVINGS POTENTIAL.

Why do the Ford Police Interceptors have **column-mounted shifters** **I**? So law enforcement has ample room, where it counts most, for police equipment. What's more, the **center-console space** **I** **measures a wide-open 9"** between the driver and front-passenger seats, meaning it **perfectly matches the width of the CVPI center console**. Easily transfer an existing CVPI apparatus directly to either new Interceptor model and reap the rewards. The **purpose-built, Ford designed steel console mounting plate** is a standard, solid foundation for aftermarket equipment. This removable plate is constructed to channel wiring from the back of the vehicle and/or from the instrument panel.

KEEP HANDS ON WHEEL AND EYES ON ROAD.

Minimize distraction while performing common police tasks on the go. Ford engineers integrated **4 customizable, auxiliary control buttons** on the steering wheel. The **remappable steering wheel switches** **G** are capable of connecting the driver to aftermarket equipment, including lights, sirens, speakers and canine door releases. Whatever the need, grounded outputs are on board for immediate use in connection with these remappable switches. Both the Sedan and Utility also house **two 12-volt powerpoints** **J**.

Finest-ever Ford Police Interceptor® Sedan.



FRONT-ROW COMFORT THAT'S FIRST RATE AND UNIQUE TO POLICE OFFICERS. The power driver's seat accommodates 6 ways; it also includes manual lumbar support and 4-way adjustable head restraints. Both seats are covered in police-grade, heavy-duty cloth and incorporate sculpted foam to accommodate a utility belt – notice what a snap it is to buckle up. The side bolsters are contoured to ensure ease of getting in and out of the cabin all day (or all night) long.

EXEMPLARY BACKSEAT TRANSPORT. Access is made easy with wide-opening rear door hinges: a Sedan exclusive. The rear bench maximizes space and is covered in heavy-duty vinyl. Door panels are simplified – no mapholders or cupholders – for ease of cleaning. For added security, hidden, manual door-lock plungers can be ordered for each rear door. (See page 17 for image.)

SUPER-CAPACITY TRUNK. There's a wealth of low-liftover room to stow equipment out of sight. Pull up the flat load floor for the standard full-size spare stationed inside. It's identical to the other 4 wheels and comes ready-to-roll with a TPMS sensor. A custom-fit electronics tray is available, and so is an auto-running circulation fan to keep conditions temperate for devices in the trunk.



First-ever pursuit-rated Ford Police Interceptor® Utility.





A BREAKTHROUGH WAY OF THINKING ABOUT A PATROL VEHICLE, WITH A NEW APPROACH TO VERSATILITY THAT OFFERS COMMANDING VIEWS AND PRESENCE. This intimidating-to-criminals ride is literally above the rest: Head room and leg room are generous throughout. **Front seats are covered in extra-tough cloth**, and **bolsters are designed specifically for officers** to get in, get going and get out comfortably and, when necessary, expediently – even with fully loaded utility belts. There's **6-way power selection** and **manual lumbar support** for the driver, along with **power-adjustable pedals**. The **60/40 split-fold bench in back** has recessed seating positions and is outfitted in **easy-clean vinyl**. It can be flexibly reconfigured as circumstances dictate. Quickly and conveniently fold the entire bench for an incredibly capable **85.1 cu. ft. of load space**.

CARGO, CARBINES AND CANINES TOO. cavernous carry-all room makes the Police Interceptor Utility the perfect choice for K-9 officers and SWAT team members with gear. Devices and dogs can be kept cooler with the available **auxiliary air conditioning**. A **full-size spare – complete with TPMS sensor** – is stored under the flat load floor for easy access, without compromising the **800-lb.-capacity workspace**.

For matters strategic or tactical, always be practical.



FROM ENGAGING IN A CHASE OR ISSUING A CITATION, TO PLANNING A RAID OR CONFISCATING CONTRABAND, PURPOSEFUL TOOLS OF THE TRADE ARE CRUCIAL. Thoughtfully taking details into account, Ford Police Interceptors help make all events go more smoothly. **The spare (A) – hidden under the flat load floor's cover – isn't a compact version, it's the exact 18" full-size 5-spoke wheel and tire combo (with TPMS) as the 4 on the road, meaning it can readily be put into high-speed use. It can also be shared among Sedan and Utility models. The Police Interceptor® Sedan offers 2 trunk-based exclusives: the lockable trunk vault¹ (B) that's sized right for storage – such as seized small arms – and a sturdy, sliding electronics tray¹ (C). Sedan and Utility models are equipped with a column-mounted shifter (D), a universal top tray (E) on the dash, an overhead storage console and dual-purpose red/white dome lighting (F). Front doors have supplemental tethers (G) to strengthen the hinge action during police work. Hidden door-lock plungers on the rear doors¹ (H) strategically ensure an extra measure of security when a detainee is in custody. And the engine hour and idle meters (I) help maintain precise service scheduling. When laws require enforcing, count on Ford Police Interceptors.**

¹Available.



COMMONALITIES – SHARED BETWEEN THE FORD POLICE INTERCEPTOR SEDAN AND UTILITY – OFFER TREMENDOUS VALUE, INCLUDING SIMPLIFIED MAINTENANCE. More than a dozen parts and systems are engineered and designed to ease operations. **Common features include the air filter, alternator, battery, brake pad, caliper, driver’s seat, front-passenger seat, head restraint, oil filter, power transfer unit (AWD system), rear differential unit, rotor, spark plug, tire/wheel (including the spare) and transmission.** Expert service support is available at Ford Dealers and authorized Ford Fleet maintenance facilities nationwide.

Features and Options



2013 FORD POLICE INTERCEPTORS



STANDARD FEATURES

- 9" space between driver's seat and front-passenger seat for aftermarket consoles
- 12-volt powerpoints: Sedan – 2; Utility – 2
- 75-mph rear-crash tested
- All-wheel drive (AWD)
- Alternator – Heavy-duty 220-amp
- Audio – AM/FM stereo/single-CD player with MP3 capability, clock and 4 speakers (Sedan)
- Audio – AM/FM stereo/single-CD player with MP3 capability, clock and 6 speakers (Utility)
- Badge – Flex Fuel
- Badge – Police Interceptor®
- Battery – Heavy-duty (78-amp-hr/750 CCA)
- Brakes – 4-wheel heavy-duty disc with Anti-Lock Brake System (ABS) (police-calibrated)
- Built-in steel intrusion plates in both front seat backs
- Climate controls – Manual air conditioning
- Column shifter
- Console mounting plate – Front
- Cooling system – Heavy-duty
- Cruise control
- Easy Fuel® capless fuel filler
- Electric power-assisted steering
- Engine – 3.5L Ti-VCT V6 FFV (Sedan)
- Engine – 3.7L Ti-VCT V6 FFV (Utility)
- Engine-hour meter
- Engine idle meter
- Exterior key locks – Driver, front-passenger and decklid/liftgate
- Fleet key – Low-cost replacement
- Flooring – Heavy-duty vinyl
- Full-size spare wheel and tire, TPMS
- Glass – Solar-tinted (Sedan)
- Glass – Solar-tinted 1st row; privacy glass 2nd and 3rd rows (Utility)
- Headlamps – Projector-beam halogen
- Headliner – Easy-to-drop
- Independent front and rear suspensions
- Mirrors – Power sideview, manual foldaway with integrated blind spot mirrors
- MyFord® with 4.2" color LCD display in police instrument cluster and center stack "smart display"
- Power-adjustable pedals
- Power door locks
- Powertrain mounts – Heavy-duty
- Power windows with one-touch-up/-down driver's side with disable feature
- Recovery hooks (Utility)
- Red/white dome light – 1st row
- Seat – Front heavy-duty cloth, 6-way power driver's with manual lumbar
- Seat – Front heavy-duty cloth passenger
- Seat – Rear vinyl bench (Sedan)
- Seat – Rear vinyl 60/40 split (Utility)
- Taillamps – Halogen (Sedan)
- Taillamps – LED (Utility)
- Tilt/telescoping steering column (Sedan)
- Tilt steering column (Utility)
- Tires – P245/55R18 all-season BSW
- Transmission – 6-speed automatic (police-calibrated)
- Trunk/cargo area – Flat load floor
- Underbody deflector plate (Sedan)
- Universal top tray for police equipment
- Wheels – Heavy-duty 18" steel 5-spoke

SAFETY AND SECURITY

- AdvanceTrac® electronic stability control (Sedan)
- AdvanceTrac with RSC® (Roll Stability Control™) (Utility)
- Airbag – Front-passenger knee (Utility)
- Airbags – Front-seat side, plus Safety Canopy® System (side-curtain airbags) and rollover sensor
- Battery saver
- Child-safety rear door locks
- Ignition-wired trunk release (Sedan)
- LATCH – Lower Anchors and Tether Anchors for Children in rear outboard seating positions
- Personal Safety System™ for driver and front passenger includes dual-stage front airbags, safety belt pretensioners, safety belt energy-management retractors, safety belt usage sensors, driver's seat position sensor, crash severity sensor, restraint control module and Front-Passenger Sensing System
- SOS Post-Crash Alert System™
- Tire Pressure Monitoring System
- Traction control

DRIVETRAINS

Police Interceptor Sedan (AWD) – Standard	<input type="checkbox"/> P2M
Police Interceptor Sedan (FWD) – Optional	<input type="checkbox"/> P2L
Police Interceptor Utility (AWD) – Standard	<input type="checkbox"/> K8A
Police Interceptor Utility (FWD) – Optional	<input type="checkbox"/> K7A

POWERTRAINS

3.5L Ti-VCT V6 FFV with 6-speed automatic transmission (Sedan)	<input type="checkbox"/> 998
3.5L EcoBoost® V6 with 6-speed automatic transmission (Sedan)	<input type="checkbox"/> 99T
3.7L Ti-VCT V6 FFV with 6-speed automatic transmission (Utility)	<input type="checkbox"/> 99R

OPTIONS¹

	Sedan	Utility
1st- and 2nd-row carpeting	<input type="checkbox"/> 17I	<input type="checkbox"/> 16C
18" full-face wheel covers	<input type="checkbox"/> 64L	<input type="checkbox"/> 64B
100-watt siren/speaker	<input type="checkbox"/> 96P	<input type="checkbox"/> 18X
Ballistic door panels – Driver's door only	<input type="checkbox"/> 65E	<input type="checkbox"/> 90D
Ballistic door panels – Driver and front-passenger doors only	<input type="checkbox"/> 65C	<input type="checkbox"/> 90E
BLIS® (Blind Spot Information System) with cross-traffic alert with heated sideview mirrors	<input type="checkbox"/> 55B	–
Climate control – Auxiliary air conditioning	–	<input type="checkbox"/> 17A
Dark car feature	<input type="checkbox"/> 13C	<input type="checkbox"/> 43D
Daytime running lamps	<input type="checkbox"/> 94Z	<input type="checkbox"/> 94Z
Dome light – Red/white in cargo area	–	<input type="checkbox"/> 17T
Engine – 3.5L EcoBoost V6 (top speed 148 mph)	<input type="checkbox"/> 99T	–
– EcoBoost Speed-Limited Calibration (top speed 131 mph)	<input type="checkbox"/> 12T	–
Engine block heater	<input type="checkbox"/> 41H	<input type="checkbox"/> 41H
Ford SYNC® (Sedan requires Reverse Sensing System)	<input type="checkbox"/> 53M	<input type="checkbox"/> 53M
Front-wheel drive (FWD)	<input type="checkbox"/> P2L	<input type="checkbox"/> K7A
Glass – Solar-tinted 2nd row (clear)	–	<input type="checkbox"/> 92R
Glass – Solar-tinted 2nd and 3rd rows (clear)	–	<input type="checkbox"/> 92G
Hidden door lock plungers (for rear doors)	<input type="checkbox"/> 63B	<input type="checkbox"/> 52H
Hidden door lock plungers and inoperable rear door handles	<input type="checkbox"/> 63P	<input type="checkbox"/> 52P
Inoperable rear door handles/inoperable locks	<input type="checkbox"/> 18G	<input type="checkbox"/> 68G
Inoperable rear door handles/operable locks	<input type="checkbox"/> 18L	<input type="checkbox"/> 68L
Keyed alike – 1435x	<input type="checkbox"/> 43E	<input type="checkbox"/> 59E
Keyed alike – 1284x	<input type="checkbox"/> 43B	<input type="checkbox"/> 59B
Keyed alike – 0135x	<input type="checkbox"/> 43D	<input type="checkbox"/> 59D
Keyed alike – 0576x	<input type="checkbox"/> 43F	<input type="checkbox"/> 59F
Keyed alike – 1111x	<input type="checkbox"/> 43J	<input type="checkbox"/> 59J
Lockable gas cap	<input type="checkbox"/> 98K	<input type="checkbox"/> 19L
Noise-suppression bonds	<input type="checkbox"/> 20P	<input type="checkbox"/> 60R
Perimeter anti-theft alarm (requires key fob)	<input type="checkbox"/> 59B	<input type="checkbox"/> 593
Police Interceptor badge delete	<input type="checkbox"/> 19D	<input type="checkbox"/> 16D
Pre-wiring for grille lamp, siren and speaker	<input type="checkbox"/> 51G	<input type="checkbox"/> 60A
Rear console plate	<input type="checkbox"/> 97D	<input type="checkbox"/> 85R
Rear view camera – Image displayed in rearview mirror	<input type="checkbox"/> 77B	<input type="checkbox"/> 21B
Remote Keyless Entry System (key fob; not available with Keyed alike)	<input type="checkbox"/> 60P	<input type="checkbox"/> 595
Reverse Sensing System	<input type="checkbox"/> 76R	<input type="checkbox"/> 76R
Roof rack side rails – Black	–	<input type="checkbox"/> 68Z
Seat – Rear heavy-duty cloth	<input type="checkbox"/> 88C	<input type="checkbox"/> 88F
Spot lamp – Driver only (incandescent bulb)	<input type="checkbox"/> 21D	<input type="checkbox"/> 51Y
Spot lamp – Driver only (LED bulb)	<input type="checkbox"/> 21L	<input type="checkbox"/> 51R
Spot lamp – Driver and front-passenger (incandescent bulbs)	<input type="checkbox"/> 21P	<input type="checkbox"/> 51Z
Spot lamp – Driver and front-passenger (LED bulbs)	<input type="checkbox"/> 21B	<input type="checkbox"/> 51S
Steering wheel remappable switches (with voice, requires SYNC)	<input type="checkbox"/> 47K	<input type="checkbox"/> 61S
Trunk circulation fan	<input type="checkbox"/> 97T	–
Trunk storage vault (includes lockable door)	<input type="checkbox"/> 19T	–

OPTIONS¹ (continued)

	Sedan	Utility
Unique steering wheel – Up to 4 remappable switch configurations (less voice)	<input type="checkbox"/> 47J	<input type="checkbox"/> 61R
Windows – Rear-window power disable (operable from driver's side switches)	<input type="checkbox"/> 67D	<input type="checkbox"/> 18W

PACKAGES

Refer to page 20 for full descriptions.

	Sedan	Utility
Cargo Wiring Upfit Package	–	<input type="checkbox"/> 67G
Headlamp Housing	<input type="checkbox"/> 13P	<input type="checkbox"/> 86P
Front Headlamp Lighting Solution	<input type="checkbox"/> 661	<input type="checkbox"/> 66A
Light Controller Package	<input type="checkbox"/> 855	–
Police Interior Upgrade Package	<input type="checkbox"/> 12P	<input type="checkbox"/> 65U
Ready-for-the-Road Package	<input type="checkbox"/> 856	<input type="checkbox"/> 67H
Rear Lighting Solution	<input type="checkbox"/> 663	<input type="checkbox"/> 66C
Taillamp Lighting Solution	<input type="checkbox"/> 662	<input type="checkbox"/> 66B
Trunk Upfit Package	<input type="checkbox"/> 854	–
Two-Tone Vinyl Package #1 (see page 22)	<input type="checkbox"/> 141	<input type="checkbox"/> 91A
Two-Tone Vinyl Package #2 (see page 22)	<input type="checkbox"/> 142	<input type="checkbox"/> 91B
Two-Tone Vinyl Package #3 (see page 22)	<input type="checkbox"/> 143	<input type="checkbox"/> 91C
Vinyl Word Wrap – POLICE – on left and right sides of vehicle	<input type="checkbox"/> 144	<input type="checkbox"/> 91D

LIMITED MAINTENANCE PACKAGES

An exclusive Ford Extended Service Plan (ESP) program for the Police Interceptor. Select the level of maintenance that will best meet your needs – each package includes an engine oil/filter change, tire rotation and extensive Multi-Point Inspection at 3,000- or 5,000-mile intervals as outlined below.

	Sedan	Utility
75,000 miles (assumes 5,000-mile intervals = 15 service events)	<input type="checkbox"/> 521	<input type="checkbox"/> 50A
75,000 miles (assumes 3,000-mile intervals = 25 service events)	<input type="checkbox"/> 522	<input type="checkbox"/> 50B
100,000 miles (assumes 5,000-mile intervals = 20 service events)	<input type="checkbox"/> 523	<input type="checkbox"/> 50C
100,000 miles (assumes 3,000-mile intervals = 33 service events)	<input type="checkbox"/> 524	<input type="checkbox"/> 50D
125,000 miles (assumes 5,000-mile intervals = 25 service events)	<input type="checkbox"/> 525	<input type="checkbox"/> 50E
125,000 miles (assumes 3,000-mile intervals = 41 service events)	<input type="checkbox"/> 526	<input type="checkbox"/> 50F
150,000 miles (assumes 5,000-mile intervals = 30 service events)	<input type="checkbox"/> 527	<input type="checkbox"/> 50G
150,000 miles (assumes 3,000-mile intervals = 50 service events)	<input type="checkbox"/> 528	<input type="checkbox"/> 50H

WHEELS



Standard: Set of 5 heavy-duty 18" 5-spoke steel wheels with center caps (5th wheel is full-size spare)



Optional: Set of 4 heavy-duty 18" full-face wheel covers with metal clips (Sedan 64L/Utility 64B)

Police Interceptor Prep Packages

QUALITY ASSURED. To assist fleets – and dramatically reduce upfitting time – Ford offers compatible, factory-direct police equipment packages.

COMPONENTS

- Front headlamp housings ^A** eliminate need to drill or modify housing assemblies; for police application with incremental hole for side marker lights
- Police headlamps ^B** include base projector beam headlamp, plus (2) multifunction Park/Turn/Warn (PTW) bulbs for wig-wag simulation, and 2 white hemispheric lighthouse LED side warning lights
- Police Taillamps ^C** include base lamp, plus (2) rear integrated hemispheric lighthouse LED side warning lights in taillamps (red – Sedan, white – Utility)
- Police rear lighting ^D** includes (2) backlit flashing linear high-intensity LED lights (driver's side red/passenger side blue) mounted inside back window; surrounds brake stop light
- Police rear lighting ^E** includes (2) backlit flashing linear high-intensity LED lights (driver's side red/passenger side blue) mounted on inside trunk decklid (lights activate when decklid is open)
- Police rear lighting ^F** includes (2) backlit flashing linear high-intensity LED lights with surround cover (driver's side red/passenger side blue) mounted to inside liftgate glass
- Police rear lighting ^G** includes (2) backlit flashing linear high-intensity LED lights (driver's side red/passenger side blue) installed on inside lip of liftgate
- Rear console plate ^H** interfaces with front console mounting plate and extends through 2nd-row occupant area to seat bottom (acting as wiring conduit on top of transmission tunnel)
- Trunk circulation fan ^I** wired to ignition to turn on; circulates air from the cabin to the trunk
- Trunk electronics tray ^J** aluminum, retractable locking tray installed at plant (no height adjustment)
- Trunk storage vault ^K** lockable; ideal for contraband/small arms; located in driver's side trunk well
- Hidden door lock plunger ^L** manual lock rod; 2nd-row door handles inoperable
- Pre-wiring for grille lamp, siren and speaker²** – electrical harness inlay (14290): inlay includes (2) light connectors that support up to (3) LED lights each (in engine compartment), (1) grille LED light connector that supports 2 LED lights, and 1 front driver's side speaker siren cable
- 100-watt siren/speaker ^M** plus wire
- Grille LED lights ^N** includes (2) backlit flashing linear high-intensity LED lights (driver's side red/passenger side blue)
- Wiring Harness ^O** includes (2) light cables for up to (3) linear high-intensity LED lights, trunk power distribution box (PDB), (1) 10-amp siren/speaker circuit (IP to trunk), trunk circulation fan wiring (IP to trunk), and rear lighting circuits (IP to trunk)
- Control System ^P** includes controller, control head and wire
- Microphone** includes cable

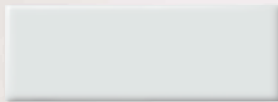
COMPONENTS	Lighting Solutions (Do-It-Yourself Wiring) ¹					Upfit Solutions (Includes Wiring) ¹					Free-standing Options
	Headlamp Housing for Sedan (13P) and Utility (86P)	Front Headlamp Housing Solution for Sedan (661) and Utility (66A)	Taillamp Lighting Solution for Sedan (662) and Utility (66B)	Rear Lighting Solution for Sedan (663)	Utility (66C)	Trunk Upfit Package for Sedan (854)	Cargo Wiring Upfit Package for Utility (676)	Light Controller Package for Sedan (855)	Ready-for-the-Road Package for Sedan (856)	Utility (67H)	
Front headlamp housings ^A	✓	✓						✓	✓		Sedan (13P)/Utility (86P)
Police headlamps ^B		✓						✓	✓		
Police Taillamps ^C			✓					✓	✓		
Police rear lighting ^D				✓				✓			
Police rear lighting ^E				✓				✓			
Police rear lighting ^F					✓				✓		
Police rear lighting ^G					✓				✓		
Rear console plate ^H						✓	✓	✓	✓	✓	Sedan (97D)/Utility (85R)
Trunk circulation fan ^I						✓		✓	✓		Sedan (97T)
Trunk electronics tray ^J						✓		✓	✓		Sedan (62D)
Trunk storage vault ^K								✓			Sedan (19T)
Hidden door lock plunger ^L								✓	✓		Sedan (63P)/Utility (52P)
Pre-wiring for grille lamp, siren and speaker ²											Sedan (51G)/Utility (60A)
100-watt siren/speaker ^M								✓	✓		96P/18X
Grille LED lights ^N								✓	✓		
Wiring Harness ^O						✓	✓	✓	✓	✓	
Control System ^P						✓	PCC8R	PCC8R	CenCom™ Sapphire	CenCom Sapphire	
Microphone									✓	✓	

¹Available. LED Limited Warranty: 5 years/100,000 miles. Siren Speaker Limited Warranty: 2 years/36,000 miles. See your dealer for details. Police Interceptor® Packages are covered under the New Vehicle Limited Warranty of 3 years/36,000 miles except where noted. ²For ease of modification, this factory-installed option is highly recommended.



Exterior and Interior Looks

EXTERIOR COLORS



Oxford White (YZ)



Ebony (UA)



Smokestone Metallic (HG)



Arizona Beige Metallic (AQ)



Medium Brown Metallic (BU)



Kodiak Brown Metallic (JI)



Dark Toreador Red Metallic (JL)



Light Blue Metallic (LN)



Light Ice Blue Metallic (LS)



Ultra Blue Metallic (MM)



Royal Blue (LM)



Norsea Blue Metallic (KR)



Deep Impact Blue (J4)



Dark Blue (LK)



Medium Titanium Metallic (YG)



Light Gray (TM)



Silver Gray Metallic (TN)



Ingot Silver Metallic (UX)



Sterling Gray Metallic (UJ)

TWO-TONE VINYL COLOR TREATMENTS¹

TWO-TONE VINYL PACKAGE #1: Vinyl on front doors, rear doors and roof.
(Not available with Two-Tone Vinyl Package 2 or 3, or Vinyl Word Wrap.)

(SEDAN 141)



(UTILITY 91A)



TWO-TONE VINYL PACKAGE #2: Vinyl on roof and hood – plus decklid for Sedan only.
(Not available with Two-Tone Vinyl Package 1 or 3, or Vinyl Word Wrap.)

(SEDAN 142)



(UTILITY 91B)



TWO-TONE VINYL PACKAGE #3: Vinyl on front doors and roof.
(Not available with Two-Tone Vinyl Package 1 or 2, or Vinyl Word Wrap.)

(SEDAN 143)

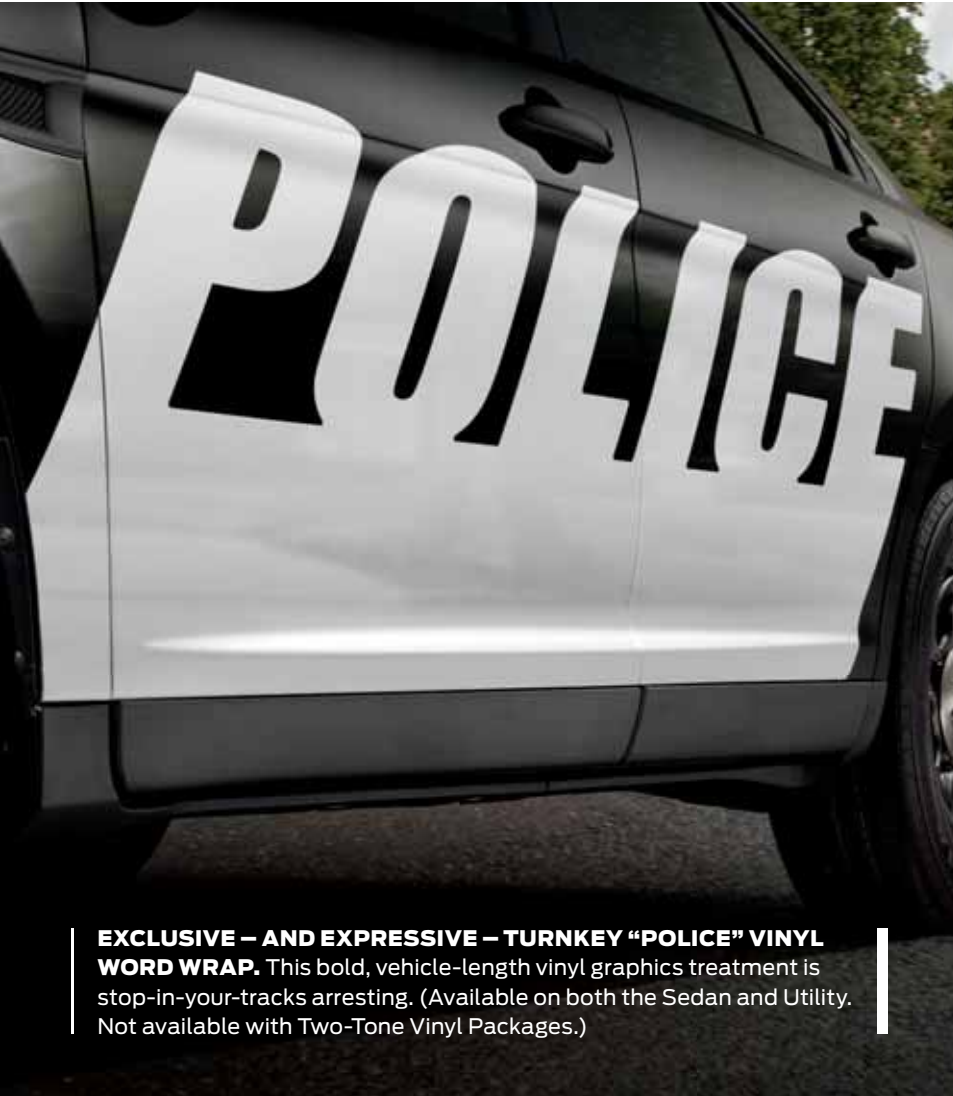


(UTILITY 91C)



¹Available.

NOTE: Because of occasional variations in printing, consult your Ford Dealer to ensure the true color choice you make is correct. Colors shown are representative only. See your dealer for actual paint/trim options. Visit fleet.ford.com for more information on colors and special paint options.



EXCLUSIVE – AND EXPRESSIVE – TURNKEY “POLICE” VINYL WORD WRAP. This bold, vehicle-length vinyl graphics treatment is stop-in-your-tracks arresting. (Available on both the Sedan and Utility. Not available with Two-Tone Vinyl Packages.)



PASSENGER SIDE – SEDAN



DRIVER'S SIDE – SEDAN



PASSENGER SIDE – UTILITY

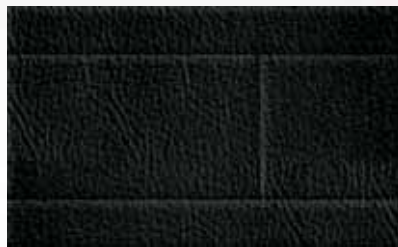


DRIVER'S SIDE – UTILITY

INTERIOR COLORS/FABRICS



Charcoal Black heavy-duty cloth with Medium Dark Flint inserts (standard for front row, optional for rear row)



Charcoal Black heavy-duty vinyl (standard for rear row)

INTERIOR UPGRADE PACKAGE (SEDAN 12P/UTILITY 65U)¹

Includes cloth rear seats, front and rear floor mats, front and rear carpeted floor covering and center floor console with 2 cupholders and unique police finish.



Sedan with optional cloth rear seating – also available on Utility.

Unmarked Vehicles and Select Specs

UNMARKED/DETECTIVE/ADMINISTRATION VEHICLES – THE BETTER TO CATCH THEM IN THE ACT. Go for that stealth-like, low-presence look by adding the Interior Upgrade Package (Sedan 12P/Utility 65U) and full wheel covers (Sedan 64L/Utility 64B), then be sure to delete the Police Interceptor® exterior badging (Sedan 19D/Utility 16D). Turn to page 19 for more options to customize your undercover car.



Sedan floor console – Interior Upgrade Package.



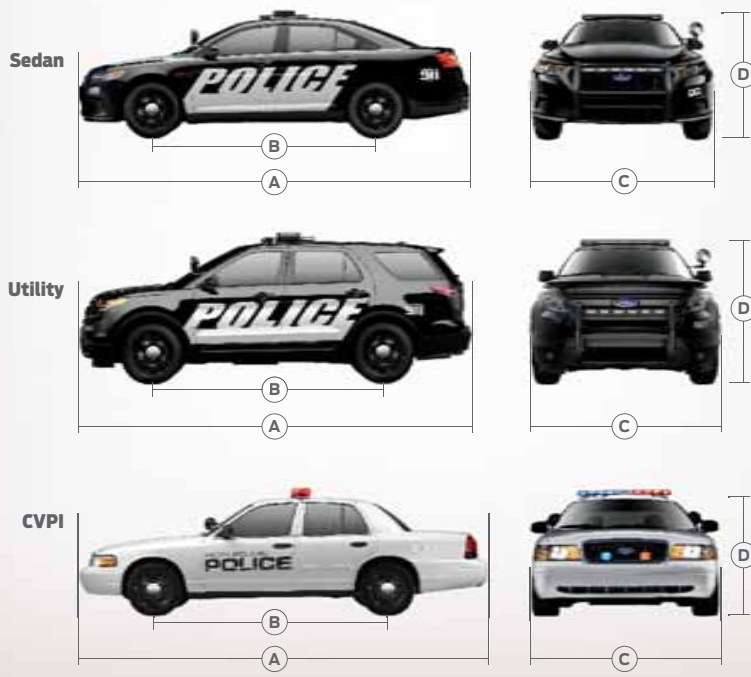


Utility floor console – Interior Upgrade Package.

DIMENSIONS AND CAPACITIES¹

By the numbers: an inside-out comparison of the all-new Police Interceptors and retired CVPI.

EXTERIOR (in.)	Sedan	Utility	CVPI
A. Length	202.9	197.1	212.0
B. Wheelbase	112.9	112.6	114.6
C. Width – Excluding mirrors	76.2	78.9	78.3
Including mirrors	85.7	90.2	84.5
D. Height (excluding options)	61.3	69.2	59.3
Step-in height	16.6	18.9	15.1
Cargo rear opening height	–	32.5	–
Cargo rear opening width at floor	–	46.6	–
Liftover height (ground to cargo deck)	–	31.4	–
Liftgate to ground	–	74.2	–
Ground clearance	5.3	6.5	5.6
INTERIOR (in.)			
Front			
Head room	39.0	41.4	39.5
Shoulder room	57.9	61.3	60.6
Hip room	56.3	57.3	57.4
Leg room	41.9	40.6	41.6
Rear			
Head room	36.7	40.1	37.8
Shoulder room	56.9	60.9	60.0
Hip room	55.9	56.8	56.1
Leg room	39.9	41.6	38.0
CAPACITIES			
Passenger volume (cu. ft.)	103.0	118.4	107.5
Trunk volume (cu. ft.)	16.6	–	20.6
Cargo volume (cu. ft.) – Behind 1st row	–	85.1	–
Behind 2nd row	–	48.1	–
Total interior volume (cu. ft.)	119.6	166.5	128.1
Cargo capacity (lbs.)	400	800	240
Fuel (gal.)	19.0	18.6	19.0
Seating	5	5	5



Special Service Solutions¹



Expedition EL. Vermillion Red. Special Service Vehicle Package and other available equipment.



F-150 XL SuperCrew 4x4. Ruby Red Metallic Tinted Clearcoat. Special Service Vehicle Package and other available equipment.

¹These vehicles are not intended to be used as pursuit vehicles (no excessive speed). For deployed airbag clearance zones, refer to the *Special Service/Fleet Manual* for the mounting of aftermarket equipment. ²Available on XL series only.

FULL FAMILY OF CARS, UTILITIES AND TRUCKS TO FULFILL YOUR DIVERSIFIED NEEDS. Ford Fleet is ready to meet your diverse needs with a balanced portfolio of durable, high-quality vehicles – ranging from the extraordinarily efficient to the time-tested tough. A quick visit to fleet.ford.com will help fill you in on the details, including specifications and color options.

2013 FORD EXPEDITION/EXPEDITION EL

Capability comes naturally, and so does extraordinary configurability. Supersize all the comfort and convenience with the flex-fueled and V8-powered Expedition EL.

Available Models: XL, XL EL Package 102A

Special Service Vehicle (SSV):² Includes 17" steel wheels, black grille, skid plates (4x4 only), running boards delete, rear non-limited-slip axle, column shifter, floor console delete, 1st-row cloth captain's chairs, 2nd-row vinyl 40/20/40 split bench, 3rd-row delete with cover end cap, flat load floor, vinyl floor covering.

2013 FORD F-SERIES

Big barriers are just small obstacles. Withstanding the punishment of your toughest tasks, F-Series is America's best-selling truck – 35 years running.

Available Models: F-150 (Pickup only), F-250 (Pickup only), F-350, F-450, F-550 (Chassis Cab only), F-650, F-750

F-150 Special Service Vehicle (SSV):² Includes 17" steel wheels, black grille, skid plates (4x4 only), running boards delete, rear non-limited-slip axle, column shifter, floor console delete, 1st-row cloth captain's chairs, 2nd-row vinyl 40/20/40 split bench, flat load floor, vinyl floor covering.

2013 FORD FUSION/FUSION HYBRID

More than a new car model. A model for new cars. The dramatic, all-new Fusion is longer, wider, higher, more powerful and more efficient than ever before.

Available Models (Fall 2012): S, SE, Titanium, SE Hybrid

2013 FORD ESCAPE

The smarter way to get there: Escape is all-new. A pair of turbocharged EcoBoost® engines are available for more power per every drop of fuel.

Available Models: S, SE, SEL, Titanium

2013 FORD E-SERIES

America's favorite full-size van sales leader for 33 years straight, the E-Series lineup is a solid testament to trust – and definitely a master of all trades.

Available Models: Van, Wagon, Cutaway, Stripped Chassis

2013 FORD TRANSIT CONNECT

Designed compact. Engineered tough. Built specifically for any business, Transit Connect provides you with the comfort of a car and the utility of a truck.

Available Models: Van, Wagon, XLT Premium Wagon, Transit Connect Electric



Fusion Hybrid. Ingot Silver Metallic.



Escape Titanium. Ginger Ale Metallic.



E-250 Cargo Van. School Bus Yellow. Available equipment.



Transit Connect XL Van. Dark Blue.

Warranty, Financing, VSO, Parts and Care

FORD ESP IS AVAILABLE FOR ALL FORD SPECIAL SERVICE VEHICLES

Upgrade your protection: Select the extended warranty that best suits your needs. There are 4 plans available that wrap around or extend the powertrain warranty – PowertrainCare, BaseCare, ExtraCare, PremiumCare – with comprehensive coverage for up to 7 years and 125,000 miles on new vehicles. In addition, drop-off first-day rental is included on all plans.

HOW MANY ESSENTIALS CAN YOU FUND THIS YEAR?

The Ford Credit Municipal Lease/Purchase Finance Program is a flexible funding method available to state and local governments to finance “essential use” equipment. This program can help you acquire needed vehicles at today’s prices, while taking advantage of low, tax-exempt interest rates and avoiding large lump-sum expenditures.



FORD CREDIT
Commercial Lending Services

BENEFITS

- Maximize limited budget funds, as only the current year’s lease payments are included in the operating budget
- Accumulate equity with each payment and realize ownership with a final payment of \$1 at lease end
- No down payment or security deposits are required
- Avoid the repercussions of a tax increase, or the expense and complexity of a bond issue to finance equipment acquisitions
- Optional Ford Extended Service Plans and vehicle accessories may be included in the amount financed; Ford Credit Municipal Finance handles all of the financial arrangements, offering highly competitive rates that provide lower payments

- Flexible payment schedules, including monthly, quarterly or annual payments, can be arranged to meet your financial requirements – consult your tax advisor to determine whether you qualify for tax-exempt financing

LEARN MORE

- Contact your local Government Account Manager or your Ford Dealer Commercial Account Manager
- Visit fordcredit.com/municipal
- Call 1-800-241-4199

VEHICLE SPECIAL ORDER (VSO)

VSO provides special paint options that are not currently offered through regular or fleet-only production. If you are looking for special equipment not currently offered, please contact your Ford Dealer to help determine whether or not your request is feasible. Visit fleet.ford.com to see what VSO can develop for you.

NEW OPTION DEVELOPMENT (VSO INQUIRIES). The establishment of new VSO options is initiated by customer requests called “VSO Inquiries.” All requests are received, reviewed and approved by the VSO department to ensure the end product is compatible with regular- and limited-production options. The end product must also meet Ford Motor Company standards for quality, durability, safety and performance.

PRODUCTION TIMING. VSO vehicles with existing VSO options take 60 – 90 days to go from order receipt to production. For vehicles with newly developed VSO options, please include the development timing provided with the inquiry response. For your fleet-planning purposes, VSO production typically begins a month after Job 1 and balances out one month prior to Job Last.

VSO EQUIPMENT AND PAINT OPTION AVAILABILITY. To view current equipment and special paint options, have your dealer access the VSO Ordering Guide at fmcdealer.com. This guide is live and options are always up to date.

GENUINE FORD COLLISION REPLACEMENT PARTS

Dependability is crucial. To do your job, you depend on every piece of your equipment to function as it was designed. The same goes for your police unit, and if you’re ever in an accident, you can depend on genuine Ford collision replacement parts: sheet metal, bumpers and lights to help restore your vehicle to pre-accident condition. Genuine Ford collision parts are equal in quality, fit and structural integrity to the original parts that came on your vehicle because they are the same parts used in the production of new vehicles. Designed, engineered, and produced by Ford Motor Company to meet Federal Motor Vehicle Safety Standards. Cheap imitation parts can’t make that claim. So don’t settle for anything less dependable than genuine Ford collision replacement parts.

QUALITY FLEET CARE

Quality Fleet Care is a centralized billing service you can use to make a single monthly payment on behalf of your entire fleet for maintenance and repairs performed at participating Ford Dealers and Quick Lane Tire & Auto Centers. Over-the-counter part purchases at participating Ford Dealers can also be included. There is no enrollment fee, no per-vehicle fee and no administration fee for warranty-covered repairs. Plus, you preset your drivers’ spending limits, which cannot be exceeded without your approval. Visit fleet.ford.com/qfc or call 1-800-367-3221 for more information.

Police Advisory Board Members



AN INDUSTRY FIRST. Acting as a liaison and resource for law-enforcement agencies nationwide, the Police Advisory Board (PAB) provides frank and direct feedback on the products, programs and policies of Ford. These 26 officials help refine current vehicles and create future offerings. Input on safety, reliability and durability is essential to serving unique police operational needs, and proved invaluable to the development of the Police Interceptors. Please visit fleet.ford.com for additional PAB information.



MARC BASYE
Tipp City, Ohio Police Department
basyem@tippcity.net
(937) 667-3112



ED HANLON
Kansas Highway Patrol, Troop G
ehanlon@ksturnpike.com
(316) 682-4537, ext. 2352



MATT ROGERS
Michigan State Police
rogersm11@michigan.gov
(517) 322-1790



JOHN BLACKWOOD
Seminole County Sheriff's Office
jblackwood@seminolesheriff.org
(407) 665-6592



JIM HANSON
Vernon County Sheriff's Department
jhanson@vernoncounty.org
(608) 778-2752



DAN RUDEN
Rocklin Police Department
dan.ruden@rocklin.ca.us
(916) 625-5415



BRAD BREWER
Vancouver Police Department
sgt1411@gmail.com
(778) 839-1411



GREG HESTER
Metropolitan Police Department, D.C.
greg.hester@dc.gov
(202) 576-5388



ED SANOW
Law and Order Magazine
esanow@hendonspub.com
(800) 843-9764



JEFF BROWNE
Arizona Department of Public Safety
jbrowne@azdps.gov
(602) 223-2349



BRUCE MACLEAN
Charles County Sheriff's Office
macleanb@ccso.us
(301) 609-6242



GEORGE SCHWARZ
Borough of Camp Hill
gschwarz1@comcast.net
(717) 805-9390



BETH CAMPBELL
Federal Bureau of Investigation
beth.campbell@ic.fbi.gov
(202) 324-4868



MIKE McCLARY
Indianapolis Metropolitan Police Department
X0032@indygov.org
(317) 327-5383



STEVE SHIPKOWSKI
San Diego Police Department
sshipkowski@sandiego.gov
(619) 527-6021



MARK CARON
Massachusetts State Police
mark.caron@pol.state.ma.us
(508) 820-2271



JAMES McCLEENDON
Jefferson Parish Sheriff's Office
mccleendon_dl@jpsso.com
(504) 832-2456



RICK SMITH
Charlotte-Mecklenburg Police Department
rsmith1@cmpd.org
(704) 336-5691



VANCE DUFFY
Los Angeles County Sheriff's Department
veduffy@lasd.org
(323) 881-3982



SCOTT NEWSOME
City of Charleston Police Department
newsomes@charleston-sc.gov
(843) 720-2485



ANDREW TERPAK
City of Miami Beach
andrewterpak@miamibeachfl.gov
(305) 673-7000, ext. 3601



TONY GONZALEZ
New Mexico State Police
antonio.gonzalez@state.nm.us
(505) 827-9104



EARL NEWTON
Oklahoma City Police Department
earl.newton@okc.gov
(405) 297-1166



DAVID TIFFT
Vermont Department of Public Safety
david.tiftt@state.vt.us
(802) 655-7902



DAVID HALLIDAY
Michigan State Police
hallidd@michigan.gov
(517) 335-9887



AL ROBINSON
Nevada Highway Patrol
arobinson@dps.state.nv.us
(775) 684-4468



QUALITY, GREEN, SAFE AND SMART.

1.800.34.FLEET

At the ready for you.

GOVERNMENT ACCOUNT MANAGERS

Don Cobb

Northeast States:
CT, DE, MA, MD, ME, NH, NJ, NY, PA, RI, VT
(860) 250-9914
dcobb@ford.com

Don Dewar

North Central States:
IA, IL, IN, KY, MI, MN, ND, NE, OH, SD, WI
(317) 514-1363
ddewar2@ford.com

Craig Fetty

South Central States:
AR, CO, KS, LA, MO, MS, NM, OK, TX
(303) 522-5753
cfetty@ford.com

Steve Hoe

Western States:
AK, AZ, CA, HI, ID, MT, NV, OR, UT, WA, WY
(916) 705-5350
shoe@ford.com

Bryan Taylor

Southeast States:
AL, FL, GA, NC, SC, TN, VA, WV
(678) 984-4201
jtaylor84@ford.com

GOVERNMENT SALES MANAGER

Tony Gratson

(313) 390-1041
tgratson@ford.com

STATE & LOCAL GOVERNMENT SALES MANAGER

Kevin Fitzpatrick

(313) 390-1058
kfitzpal@ford.com

STATE & LOCAL GOVERNMENT SALES ANALYST

Mona Mlynarczyk

(313) 390-1054
mmlynarc@ford.com

VEHICLE SPECIAL ORDER

Cale Kehoe

Special Paint
(313) 390-0855
ckehoe@ford.com

FEDERAL GOVERNMENT SALES MANAGER

Debra Hairston

(313) 390-1095
dhairsto@ford.com

FORD CREDIT MUNICIPAL FINANCE PROGRAM REGIONAL MARKETING COORDINATORS

Tabitha Crawford

CA, CT, DE, DC, IL, ME, MD, MA, NH, NJ, NY, OK, PA, RI, TX, VT
(313) 594-1825
tcrawf22@ford.com

Ann Creviston

AK, AZ, AR, CO, HI, ID, IA, KS, LA, MN, MS, MO, MT, NE, NV, NM,
ND, OR, SD, UT, WA, WI, WY
(313) 845-7894
acrevist@ford.com

Janet Doty

AL, FL, GA, IN, KY, MI, NC, OH, SC, TN, VA, WV
(313) 390-7184
jdoty@ford.com

FORD FLEET CUSTOMER SERVICE

Fleet Customer Information Center (FCIC):
1-800-34-FLEET (U.S.) • 1-800-668-5515 (CANADA)

Open 8:30 a.m. – 5:00 p.m. EST

The FCIC supports Fleet Accounts by providing a single source to answer all of your Fleet-related questions.

Choose from the following selections:

- FIN Enrollment/Website (Option 1)
- Fleet Sales/Order-to-Delivery (Option 2)

fleet.ford.com • FordPoliceInterceptor.com



North American Fleet, Lease & Remarketing Operations

Some features discussed may be optional. Vehicles shown may contain optional or modifier-installed equipment. Features shown may be offered only in combination with other options or subject to additional ordering requirements or limitations. Dimensions shown may vary due to optional features and/or production variability. Information in this brochure was developed from Order Guides as of March 2012. Following publication of this catalog, certain changes in standard equipment, options and the like, or product delays may have occurred which would not be included in these pages. For more information on AdvanceTrac® with or without RSC® visit fleet.ford.com. Remember that even advanced technology cannot overcome the laws of physics. It's always possible to lose control of a vehicle due to inappropriate driver input for the conditions. • Always wear your safety belt, secure children in the rear seat and follow airbag warning label instructions. • SYNC: Driving while distracted can result in loss of vehicle control. Only use mobile phones and other devices, even with voice commands, when it is safe to do so. • For more information, visit fleet.ford.com. • Ford Motor Company reserves the right to change product specifications at any time without incurring obligations. All comparisons based on 2012 competitive models.

