

2010

CANYON



GMC

MID-SIZE TRUCK. FULL-SIZE HEART.

Canyon may be more compact than our full-size Sierra, but it's every bit as serious in the technology and performance departments. There's a full range of advanced Vortec engines, including a four-cylinder powerplant that's so efficient, it consumes just 7.8 litres of fuel per 100 kilometres in highway driving.* A substantial payload rating and towing capability up to 2722 kg (6000 lb.).** An all-welded steel box with tough double-wall construction and a two-position tailgate that allows you to carry 4' x 8' sheets of building material. And a choice of two-wheel drive and Insta-Trac™ 4x4 powertrains. Every Canyon model also features the added control of a standard StabiliTrak® electronic stability control system, along with the security and convenience of OnStar®. Factor in a century-long heritage of professional-grade performance and you've got a truck that's up to virtually any challenge. GMC Canyon. It's all heart.

* 2010 Canyon 2WD equipped with manual transmission, based on GM Testing in accordance with approved Transport Canada test methods. Your actual fuel consumption may vary.

** Requires Vortec 5.3L V8 engine and other available equipment.

For more information go to gmc.gm.ca



CANYON CREW CAB SLE-2 4x4 with Z71 Off-Road suspension, shown in Pure Silver Metallic.



GMC

DECISIONS, DECISIONS.

Canyon puts you in the driver's seat with more choices than any other mid-size pickup*. There are Regular Cab, Extended Cab and Crew Cab body styles – the most in the segment. Z85 Standard, Z71 Off-Road and ZQ8 Sport suspensions. Manual and automatic transmissions. Two available box sizes. And three engines, including a highly efficient Vortec 2.9-litre four-cylinder, a powerful yet economical Vortec 3.7-litre five-cylinder and a 300-horsepower Vortec 5.3-litre V8 engineered to run equally well on regular gas or E85 ethanol. The bottom line? More than any competitor, Canyon makes it easy for you to build your truck, your way.

*Excludes other GM vehicles.



CANYON CONFIGURATOR

	Crew Cab	Extended Cab	Regular Cab
Trim	SLE-2	SLE-1 & SLE-2	SLE-1 & SLE-2
Engine	Vortec 2.9L I-4 Vortec 3.7L I-5 Vortec 5.3L V8	Vortec 2.9L I-4 Vortec 3.7L I-5 Vortec 5.3L V8 (SLE-2)	Vortec 2.9L I-4 Vortec 3.7L I-5
Drivetrain	2WD 4x4	2WD 4x4	2WD 4x4
Transmission	4-speed automatic	5-speed manual (I-4 only) 4-speed automatic	5-speed manual (I-4 only) 4-speed automatic
Suspension	Z85 Standard Z71 Off-Road Package ZQ8 Sport (2WD only)	Z85 Standard Z71 Off-Road Package (SLE-2) ZQ8 Sport (SLE-2 with 2WD only)	Z85 Standard



CANYON CREW CAB SLE-2, shown in Red Orange Metallic, CANYON EXTENDED CAB SLE-2, shown in Pure Silver Metallic and CANYON REGULAR CAB SLE-2, shown in Navy Blue. All models are shown with available equipment.

COMFORT, MEET VERSATILITY.

No matter which cab configuration you select, your Canyon will feature a spacious cabin designed for style, comfort and versatility. Crew Cab models include four full-size front-hinged doors that make entry and exit a breeze. Crew Cabs also offer the comfort of standard front bucket seats, with an available 60/40 split-bench front seat for those who require accommodations for six passengers. Extended Cabs feature seating for five with standard dual fold-up rear jump seats, and both Extended Cab and Regular Cab models offer front bucket seats as an option. Standard amenities on every Canyon include air conditioning, cruise control, a tilt adjustable steering column and a leather-wrapped steering wheel. Your trip will seem shorter with the available XM Satellite Radio™* with 130 channels of crystal-clear digital sound.

* Available in 10 Canadian provinces and the 48 contiguous United States. Subscription sold separately after trial period.



Need more in-cabin storage space? Just fold down either side of Canyon Crew Cab's 60/40 divided rear seatback.



Canyon Extended Cabs feature a convenient storage unit located under the rear jump seats.





CANYON CREW CAB SLE-2 interior, shown with leather seating surfaces in Ebony and other available equipment.

CONTROL IS WHAT IT'S ALL ABOUT.

An artful blend of style and function, Canyon's driver interface has been carefully designed to keep you comfortably in control. All controls are designed and positioned according to ergonomic principles, and essential driving information is conveyed at a glance by handsome, easy-to-read analogue gauges. Additional data is provided by a digital Driver Information Centre so advanced, it even monitors the pressure in your tires. Canyon is also the only mid-size pickup to provide the confidence of OnStar, the world's most comprehensive in-vehicle security, communications and diagnostics system.* OnStar can unlock your doors remotely if you lock your keys inside, assist police in locating your Canyon via GPS if it should be stolen and provide a host of other premium services. It's the perfect co-pilot.

* Excludes other GM models. OnStar services require vehicle electrical system (including battery), wireless service and GPS satellite signals to be available and operating for features to function properly. OnStar acts as a link to existing emergency service providers. Subscription Service Agreement required. Ability to locate stolen vehicles varies with conditions. Call 1-888-4ONSTAR (1-888-466-7827) or visit onstar.ca for OnStar's Terms and Conditions, Privacy Statement and details and system limitations.





CANYON SLE-2 4x4 instrument panel, shown with available equipment.

TECHNOLOGY AND PERFORMANCE FOR REAL LIFE.

Inside every Vortec engine, you'll find a combustion chamber design that results in enhanced power and efficiency. Canyon offers this intelligent technology in three different engines, all designed to run on regular fuel. The first is a fuel-efficient Vortec 2.9L in-line four cylinder. The second is a 242 horsepower Vortec 3.7L five-cylinder engine that delivers an excellent combination of performance and fuel efficiency. Both feature Variable Valve Timing (VVT) and 4-valve per cylinder technology with dual overhead camshafts. Topping the range is a Vortec 5.3-litre V8 that generates 300 horsepower and a prodigious 320 pounds-feet of torque – enough to tow up to 2722 kg (6000 lb.). Another advanced technology that's part of every Canyon is OnStar Vehicle Diagnostics,* a remarkable feature that remotely runs a monthly check of the engine, transmission, ABS, even the air bags, then sends you a comprehensive report via email. OnStar Vehicle Diagnostics will even alert you when it's time to schedule regular maintenance.

* Available to OnStar subscribers at no extra charge. Capabilities vary by model. Visit onstar.ca for details and system limitations.





CANYON EXTENDED CAB SLE-2, shown in Pure Silver Metallic with available equipment.

CANYON IS SERIOUS ABOUT SAFETY.

Every Canyon is equipped to help prevent crashes and to protect you when a crash can't be avoided. Features in the first category include Canyon's excellent visibility, anti-lock braking system (ABS) and a standard electronic stability control system, called StabiliTrak. This system is engineered to help put an end to lateral skids and does its job so effectively, it's been proven to reduce the risk of a light truck being involved in a fatal single-vehicle crash by a remarkable 63 percent.* In the event of a collision, Canyon offers five-star frontal occupant protection,** thanks to a robust computer-designed structure, four standard air bags† and many other features. Canyon even provides serious care after a collision. The standard OnStar system will automatically report air bag deployment to OnStar advisors, who can then dispatch emergency services to your precise location.††





FIVE-STAR FRONTAL CRASH TEST RATING**

* According to information published by the U.S. Department of Transportation's National Highway Traffic Safety Administration, July 2007. <http://www-nrd.nhtsa.dot.gov/Pubs/810794.PDF>

** Five-star frontal crash rating is for Canyon Crew Cab's driver and front-passenger seating positions in the frontal crash test. U.S. government star ratings are part of the National Highway Traffic Safety Administration's (NHTSA's) New Car Assessment Program (NCAP) (safercar.gov).

† A NOTE ON CHILD SAFETY: Always use safety belts and proper child restraints, even in vehicles equipped with air bags. Never place a rear-facing infant restraint in the front seat of any vehicle equipped with an active frontal air bag. Refer to the Canyon Owner's Manual and child safety seat instructions for more information.

†† OnStar services require vehicle electrical system (including battery), wireless service and GPS satellite signals to be available and operating for features to function properly. OnStar acts as a link to existing emergency service providers. Subscription Service Agreement required. Ability to locate stolen vehicles varies with conditions. Call 1-888-4ONSTAR (1-888-466-7827) or visit onstar.ca for OnStar's Terms and Conditions, Privacy Statement and details and system limitations.



ONSTAR

Does your truck have a help button? If you have OnStar^{††}, you can get the help you need at the push of a button. If you're in a collision, you don't even need to ask for help – sensors around your vehicle can automatically alert an OnStar Advisor. If your truck's stolen, we can use GPS technology to help police find it. OnStar and 1 year of the Safe & Sound Plan is included on all Canyon models. Also available is the Directions & Connections Plan, which includes Turn-by-Turn Navigation[‡] – the simplest and smartest navigation system available. Just push the OnStar button and tell the Advisor where you want to go, and turn-by-turn directions are downloaded to your vehicle. No one offers more ways to help on the road. Learn more at onstar.ca



‡ Turn-by-Turn Navigation not available in certain areas. Visit onstar.ca for coverage map.

XM SATELLITE RADIO

Your listening preferences are very personal. XM Satellite Radio gives you access to the largest playlist on the planet and the most commercial-free music in digital-quality sound. That's on top of news, talk, comedy and sports channels – including more than 1000 NHL games. It all adds up to 130 channels to choose from, coast to coast.^{‡‡} Why offer so much choice? XM Satellite Radio has to appeal to a wide range of tastes, with more than 9 million subscribers. And it's available on all Canyon SLE-2 models. Ask your dealer for more information.



‡‡ Available in 10 Canadian provinces and the 48 contiguous United States. Subscription sold separately after trial period.

Canyon is offered in a choice of attractive models. To help you find the one that's just right for you, some of the major features that differentiate one Canyon model from the other are listed below.

CANYON SLE-1

Canyon Regular Cab and Canyon Extended Cab are available as SLE-1 models. The following features are included:

- Vortec 2.9L I-4 engine with Variable Valve Timing (VVT)
- GM Oil Life Monitoring System
- 5-speed manual transmission
- Insta-Trac 2-speed transfer case on 4x4 models
- 4-wheel anti-lock braking system (ABS)
- StabiliTrak electronic stability control system
- Traction control
- Z85 Standard Suspension
- 16-in. steel wheels
- Fog lights
- Bedliner
- 2-position locking tailgate
- Air conditioning
- Tilt steering column
- Cruise control
- Deluxe cloth 60/40 split-bench front seat
- Rear dual jump seats (Extended Cab)
- AM/FM stereo sound system with seek-and-scan and digital clock
- OnStar and 1 year of the Safe & Sound Plan.

CANYON SLE-2

All Canyon body styles are available as SLE-2 models. Canyon SLE-2 models include the equipment of Canyon SLE-1 plus the following features and upgrades:

- Vortec 3.7L I-5 engine with Variable Valve Timing (VVT);* Vortec 5.3L FlexFuel V8 available; both engines require 4-speed automatic transmission
- 16-in. aluminum wheels
- Deep-tinted glass behind the front doors
- Power Convenience Package (standard on Crew Cabs; available on Regular and Extended Cabs) includes: power windows, power exterior mirrors, programmable power door locks, remote keyless entry system and content theft alarm
- Deluxe cloth front bucket seats (standard on Crew Cabs; available on Regular and Extended Cabs)
- 60/40 split-bench rear seat (Crew Cab)
- CD player with MP3 playback.

*Standard on 4x4 Crew Cab models with Z85 suspension and all models with the Z71 Off-Road Package, available on other models.

THE FINAL TOUCH.

With quality GMC Accessories, it's easy to take your new Canyon's style, comfort and capability to new heights. To ensure outstanding fit, finish and performance, all GMC Accessories are engineered to the same high standards as your Canyon. That's why they can be covered under the 3-year/60,000 km New Vehicle Limited Warranty.* When you purchase your new Canyon through GMAC, your GMC Accessories can also be included in your finance agreement. Ask your dealer for a complete listing of the GMC Accessories to help you make your Canyon unmistakably yours. Or visit gm.ca

*Whichever comes first, when permanently installed by the dealer at the time you purchased your new vehicle, or for the remainder of the New Vehicle Limited Warranty if installed after the time of your vehicle purchase, but no less than 12 months.

SOME AVAILABLE CANYON ACCESSORIES INCLUDE:

- Hard folding and soft tonneau covers
- All-weather floor mats
- Moulded hood protector
- Side-window deflectors
- Tubular assist steps
- Box rail protectors
- Brush grille guard
- Box extender
- Box mat.





GMC
ACCESSORIES



2010 GMC CANYON STANDARD & OPTIONAL FEATURES

SAFETY AND SECURITY	SLE-1	SLE-2	EXTERIOR	SLE-1	SLE-2
Air bags – driver and front passenger-side, frontal	S	S	Bumpers – front and rear, chrome with rear step pad	S	S
Air bags – driver, front-passenger and rear-seat outboard passengers, roof-mounted head curtain side-impact	S	S	Fog lights – front, halogen	S	S
Door locks – rear, child-security (Crew Cab)	–	S	Glass – Solar-Ray®, tinted	S	S
Headlights – Daytime Running Lights with automatic light control	S	S	Glass – deep-tinted, all windows behind front doors	–	S
Keyless entry system – remote	–	0 ^{1,2}	Grille – chrome with dark smoke gray bars	S	S
OnStar In-Vehicle Communications and Assistance Service – includes 1 year of the Safe & Sound Plan*	S	S	Mirrors – manual folding (Reg. and Ext. Cabs)	S	S
Safety restraints – child seat tether anchors	S	S	Mirrors – manual folding, power remote control (Crew Cab)	–	S
StabiliTrak – electronic stability control system	S	S	Mouldings – bodyside, body-coloured (Crew Cab)	–	S
Theft-deterrent system – content theft alarm, audible/visible	–	0 ^{1,2}	Pickup box – Fleetside, double-wall welded steel with 8 cargo tie-downs	S	S
Theft-deterrent system – electronic immobilizer	S	S	Pickup box – bedliner	S	S
Traction control – electronic	S	S	Recovery hooks – 2, front (4x4 models only)	0	0
MECHANICAL			Tailgate – 2-position	S	S
Battery – with run-down protection	S	S	Tires – P215/70R16 all-season** (2WD models)	S	S
Brakes – front disc/rear drum	S	S	Tires – P235/75R16 all-season** (4x4 models, except with Z71)	S	S
Brakes – 4-wheel anti-lock braking system (ABS)	S	S	Tires – P235/75R16 On-Off Road (4x4 models)	–	0 ⁶
Engine – Vortec 2.9L I-4 VVT with SFI Horsepower – 185 @ 5600 rpm; Torque – 190 lb.-ft. @ 2800 rpm – Reg. and Ext. Cab – Crew Cab (2WD)	S	S	Tires – P265/70R17 On-Off Road (included with Z71)	–	S
Engine – Vortec 3.7L I-5 VVT with SFI Horsepower – 242 @ 5600 rpm; Torque – 242 lb.-ft. @ 4600 rpm – Reg. and Ext. Cab – Crew Cab	0 ³	0 ³ 0 ⁴	Tires – P235/50R18 all-season** (included with Z08)	–	S
Engine – Vortec 5.3L V8 with SFI, FlexFuel (E85 capable) Horsepower – 300 @ 5200 rpm; Torque – 320 lb.-ft. @ 4000 rpm – Ext. and Crew Cab only	–	0	Tire, spare – limited use, winch-mounted under rear frame, mounted on steel wheel	S	S
Engine – block heater	0	0	Tire, spare – full-size, mounted on steel wheel	0	0
Locking differential – rear	0	0	Wheels – 16" x 6" steel wheel, standard with Z85 Standard Suspension (PP4)	S	–
Steering – power, rack-and-pinion	S	S	Wheels – 16" x 6" aluminum, standard on 4x4 models with Z85 Standard Suspension (PP1)	–	S
Suspension, Z85 Standard – includes front coil springs on 2WD models and torsion bar front suspension on 4x4 models. Both feature a 28 mm front stabilizer bar, rubber jounce bumpers and twin tube shock absorbers	S	S	Wheels – 16" x 6" aluminum, standard on 2WD models with Z85 Standard Suspension (PP2)	–	S
Suspension, Z71 Off-Road Package – includes torsion bar front suspension on both 2WD and 4x4 models, 28 mm front stabilizer bar, urethane jounce bumpers and monotube shock absorbers. Additional 25 mm ride height over Z85 Standard Suspension for improved ground clearance. Also includes Skid Plate Package on 4x4 models, 2 front recovery hooks, large body-coloured wheel flares, 17" chrome-clad wheels and P265/70R17 On-Off road tires (4). Requires either Vortec 3.7L I-5 or Vortec 5.3L V8 engine, locking differential and automatic transmission. Not available with Reg. Cab.	–	0	Wheels – 17" x 7" chrome-clad, standard on models with Z71 Off-Road Suspension (R03)	–	S
Suspension, Z08 Sport – includes sport-tuned suspension with 51 mm (2 in.) lower ride height than Z85 Standard Suspension, 18" x 8" Midnight Silver aluminum wheels with P235/50R18 all-season** tires and unique colour-keyed grille surround. Requires Vortec 5.3L V8 engine and automatic transmission. Not available with Reg. Cab or 4x4.	–	0	Wheels – 16" x 6.5" chrome-clad, available on 2WD models with Z85 Standard Suspension (RP1)	–	0
Suspension – rear, two-stage multi-leaf springs and solid live axle	S	S	Wheels – 16" x 6.5" chrome-clad, available on 4x4 models with Z85 Standard Suspension (R02)	–	0
Transmission – 5-speed manual with overdrive – Reg. and Ext. Cab	S	S	Wheels – 18" x 8" Midnight Silver aluminum, standard on 2WD models with Z08 Sport Suspension (P67)	–	S
Transmission – 4-speed automatic with overdrive ⁵ – Reg. and Ext. Cab – Crew Cab	0	0 S	Window – rear, sliding	0	0
Transfer case – (4x4 models) 2-speed, part-time Insta-Trac, with dash-mounted electronic controls	S	S	Windshield wipers – 2-speed with variable delay (intermittent)	S	S
Trailer Equipment Package – hitch receiver platform and wiring harness	0	0	Skid Plate Package – includes transfer case skid shield, composite front underbody splash shield from behind the front bumper to the first cross member (Z85 4x4 models only)	0	0
			INTERIOR		
			Air conditioning – manual	S	S
			Console – front centre floor, includes centre storage tray, dual cupholders and rear-hinged storage compartment	–	0 ²
			Cruise control – electronic with resume, coast and decelerate/accelerate features	S	S
			Floor covering – ebony carpet with rubberized vinyl floor mats	S	S
			Floor covering – vinyl (deletes rear jump seats on Ext. Cab)	0	–
			Instrumentation – analogue (includes speedometer, tachometer, odometer, trip odometer, coolant temperature and fuel gauges)	S	S
			Instrumentation – Driver Information Centre includes multi-language and trip functions, displays vital vehicle functions with both visual and audible reminders/warnings	S	S
			Instrumentation – GM Oil Life Monitoring System	S	S
			Instrumentation – tire pressure monitoring system	S	S
			Lights – includes instrument panel, dome and exterior cargo	S	S
			Mirror – auto-dimming with compass and exterior temperature display	–	0
			Power outlets – 2 auxiliary	S	S
			Steering column – tilt adjustable	S	S
			Steering wheel – leather-wrapped	S	S
			Sunshades – LH and RH padded; passenger-side vanity mirror	S	S
			Power Convenience Package – includes power windows, power remote control mirrors, remote keyless entry system, programmable power door locks and content theft alarm – Reg. and Ext. Cab – Crew Cab	–	0 S

Note: Canyon Crew Cab only available in SLE-2 trim.

SEATS

	SLE-1	SLE-2
Front reclining Deluxe cloth 3-passenger 60/40 split-bench, outboard head restraints, centre armrest with storage and dual cupholders – Reg. and Ext. Cab – Crew Cab (deletes centre floor console)	S –	S 0
As above, with vinyl trim, deletes manual recliners and centre armrest	0	–
Front reclining Deluxe cloth bucket seats with integral head restraints, centre floor console with storage, armrest and dual cupholders – Reg. and Ext. Cab – Crew Cab	– –	0 S
Front bucket seats with leather seating surfaces, heated, power 8-way driver seat adjuster with power recliner, power 6-way front-passenger seat adjuster with manual recliner, centre floor console with storage, armrest and dual cupholders – includes SLT badge on tailgate (Ext. and Crew Cab)	–	0
Rear dual jump seats, fold-up, forward-facing with under-seat storage compartment (Ext. Cab)	S	S
Rear-seat delete (Ext. Cab) ⁷	0	–
Rear 3-passenger 60/40 split-bench, flat-folding (Crew Cab)	–	S

ENTERTAINMENT SYSTEMS

AM/FM stereo with seek/scan and digital clock	S	–
AM/FM stereo with CD player, MP3 playback compatibility, seek/scan, auto tone control, digital clock, speed-compensated volume, TheftLock [®] and Radio Data System [®] (RDS)	–	S
XM Satellite Radio [†]	–	0
2 speakers in Reg. Cab/4 speakers in Ext. Cab	S	–
4 speakers in Reg. Cab/6 speakers in Ext. and Crew Cab	–	S

S – Standard. 0 – Optional individually or in combination with other optional equipment.

Note: The trim features indicated reflect only a portion of the total content of each trim level. See your sales consultant for complete listings, current availability and compatibility.

1 – Included with available Power Convenience Package.

2 – Standard on Crew Cab models.

3 – Requires available automatic transmission.


4 – Standard on Crew Cab 4x4.

5 – Required with available Vortec 3.7L I-5 or Vortec 5.3L V8 engines.

6 – Not available with Z71 Off-Road Suspension Package.

7 – Requires vinyl floor covering.

* OnStar services require vehicle electrical system (including battery), wireless service and GPS satellite signals to be available and operating for features to function properly. OnStar acts as a link to existing emergency service providers. Subscription Service Agreement required. Ability to locate stolen vehicles varies with conditions. Call 1-888-4ONSTAR (1-888-466-7827) or visit onstar.ca for OnStar's Terms and Conditions, Privacy Statement and details and system limitations.

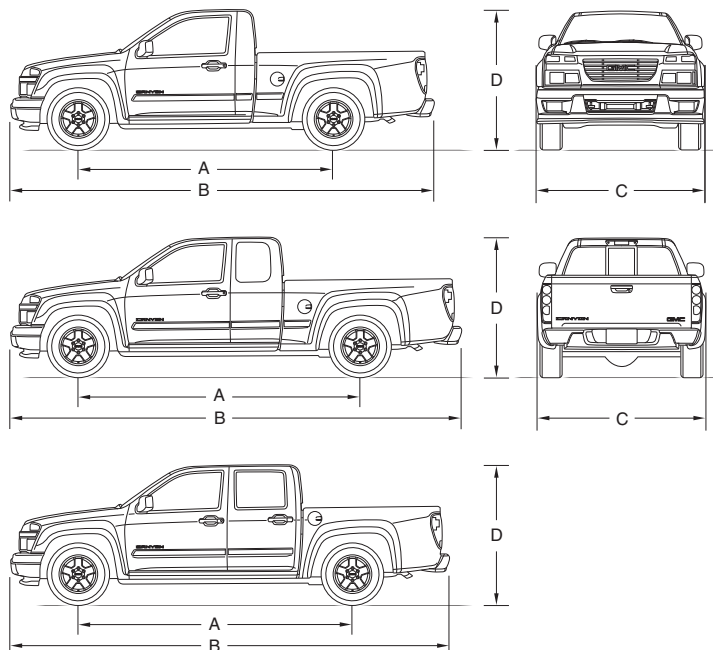
** All-season tires may not satisfy winter tire requirements in all regions of the country. Tires specifically designed for severe winter conditions and marked with the "winter tire" symbol  may be required during certain months or in certain regions. Contact your Provincial, Municipal or local road authority for information regarding which tires are required in your particular area.

† Available in 10 Canadian provinces and the 48 contiguous United States. Subscription sold separately after trial period.

‡ Payload includes passengers, equipment and cargo. Payloads are approximate and will change with the addition of optional or aftermarket equipment. Consult your dealer or equipment supplier for details.

‡ Trailer ratings are calculated using an automatic transmission and required optional equipment and assuming only the driver is in the tow vehicle. Trailer Weight (also called Trailer Towing Capacity) is the weight of a trailer, its load or contents plus any other weight added to the tow vehicle. Ratings shown are for ball-hitch applications. Many trailer towing applications require additional optional equipment. See your dealer or refer to the Canyon Owner's Manual for details. For more information on trailer towing go to gm.ca

DIMENSIONS



EXTERIOR, mm (in.)

	REGULAR CAB	EXTENDED CAB	CREW CAB
Wheelbase (A)	2827 (111.3)	3200 (126.0)	3200 (126.0)
Length (B)	4887 (192.4)	5260 (207.1)	5260 (207.1)
Width (C) – Z85 2WD – Z85 4x4	1717 (67.6) 1742 (68.6)	1717 (67.6) 1742 (68.6)	1717 (67.6) 1742 (68.6)
Height (D) – Z85 2WD – Z85 4x4	1648 (64.9) 1717 (67.6)	1648 (64.9) 1717 (67.6)	1656 (65.2) 1725 (67.9)

INTERIOR, mm (in.) front/rear

Headroom	1006/– (39.6/–)	1006/963 (39.6/37.9)	998/973 (39.3/38.3)
Legroom	1118/– (44.0/–)	1072/587 (42.2/23.1)	1072/884 (42.2/34.8)
Shoulder room	1450/– (57.1/–)	1450/1453 (57.1/57.2)	1450/1450 (57.1/57.1)
Hip room	1354/– (53.3/–)	1354/1463 (53.3/57.6)	1354/1344 (53.3/52.9)

CARGO BOX DIMENSIONS, mm (in.)

Length	1849 (72.8)	1849 (72.8)	1552 (61.1)
Inside width @ wheelhousing	1082 (42.6)	1082 (42.6)	1082 (42.6)
Inside height	472 (18.6)	472 (18.6)	472 (18.6)

CAPACITIES

GVWR, max. kg (lb.)	2336 (5150)	2495 (5500)	2495 (5500)
Payload, max. kg (lb.) ^{††}	673 (1484)	654 (1441)	577 (1272)
Towing, max. kg (lb.) [‡]	1814 (4000)	2722 (6000)	2722 (6000)
Fuel, L (imp. gal.)	72 (15.8)	72 (15.8)	72 (15.8)

PEACE OF MIND, STANDARD WITH EVERY GMC MODEL

When you build them with quality, you can back them with confidence. That's why General Motors of Canada backs every GMC model with the best coverage in Canada. Program highlights include:

- 3-year/60,000 km New Vehicle Limited Warranty*
- 5-year/160,000 km Powertrain Component Limited Warranty, with \$0 deductible on repairs and the warranty is fully transferable at no charge*
- 5-year/160,000 km Courtesy Transportation*
- 5-year/160,000 km 24/7 Roadside Assistance*
- 6-year/160,000 km rust-through perforation coverage*
- 8-year/130,000 km coverage on catalytic converters and powertrain control modules (PCMs).*

*Whichever comes first. Conditions and limitations apply, see dealer for details.

OTHER OWNERSHIP PRIVILEGES AND PROGRAMS:†

- **GM Protection Plan (GMPP)** – the only extended service plan backed by the resources and commitment of General Motors, GMPP may be purchased at the time of sale or subsequently during the New Vehicle Limited Warranty period
- **GM Goodwrench Service** – with GM-certified technicians and GM-approved parts, nobody knows your GM vehicle better.

† Conditions and limitations apply.

TO HELP YOU PURCHASE A NEW VEHICLE:

- **GMAC Express Credit Application** – a convenient way to get pre-approved credit toward the purchase of your next GM vehicle
- **GMAC Purchase Financing** – on the spot financing at your GM dealership††
- **GMAC Student Bonus Program** – GM will cover the first two purchase finance payments on eligible new GM vehicles for students and recent graduates of high school, college or university.
- **The GM Card** – eligible cardholders may be able to redeem up to \$3500 on GM Card® Earnings toward the Total Purchase Price on selected vehicles. For more information on The GM Card please call 1-800-461-3279.†

† Conditions and limitations apply. †† Subject to eligibility.

INFORMATION RESOURCES:

You can find more information about these programs from your GM dealer, or at these information centres:

- The GM website at gm.ca
- The GM Customer Communication Marketing Centre at 1-800-GM-DRIVE (1-800-463-7483 or 1-800-263-3830 for TDD users)
- For information about GMAC visit gmac.ca or call 1-800-616-4622.

A WORD ABOUT THIS BROCHURE

Some of the equipment shown or described throughout this brochure may be available at extra cost. We have tried to make this brochure comprehensive and factual. We reserve the right, however, to make changes at any time, without notice, in prices, colours, materials, equipment, specifications, models and availability. Specifications, dimensions, measurements, ratings and other numbers in this brochure and other printed materials provided at the dealership or affixed to vehicles are approximates based upon design and engineering drawings and prototypes and laboratory tests. Your vehicle may differ due to variations in manufacture and equipment. Since some information may have been adapted since the time of the printing, please check with your GM dealer for complete details. General Motors of Canada Limited reserves the right to lengthen or shorten the model year for any product, for any reason, or to start and end model years at different times.

A WORD ABOUT ASSEMBLY

GM vehicles are equipped with engines and components produced and assembled by different operating units of General Motors, its subsidiaries and suppliers and these engines and components may change or be obtained from different sources from time to time. All such engines and components are approved for use in GM vehicles. Certain equipment ordered may be unavailable at the time of assembly and we suggest that you verify that your vehicle includes the equipment you ordered, or if there are changes, that they are acceptable to you.

TRADEMARKS

The marks appearing in this brochure including, but not limited to: General Motors, GM, the GM emblem, GMC, Canyon, Z71 and their respective logos, emblems, slogans and vehicle model names and body designs; and other marks such as Active Fuel Management, Insta-Trac, Solar-Ray, StabiliTrak and Vortec are trademarks of General Motors and/or General Motors of Canada Limited, its subsidiaries, affiliates or licensors.

GMAC is a registered trademark of the General Motors Acceptance Corporation of Canada, Limited.

OnStar and the OnStar emblem are registered trademarks of the OnStar Corporation.

TheftLock is a registered trademark of Delphi Automotive Systems Inc.

Radio Data System (RDS) is a registered trademark of the U.S. National Association of Broadcasters.

The XM name and related logos are trademarks of XM Canada, Canadian Satellite Radio, Inc.

COPYRIGHT

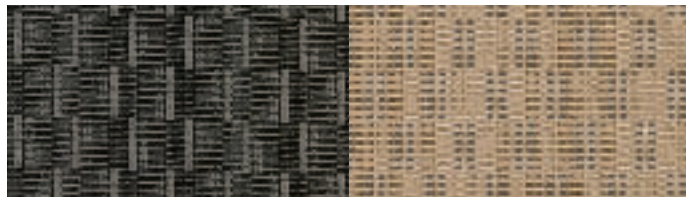
©Copyright 2009 General Motors of Canada Limited. All Rights Reserved. All text, images, graphics, and other materials in this brochure are subject to the copyright and other intellectual property rights of General Motors and/or General Motors of Canada Limited. These materials may not be reproduced, distributed or modified without the express written permission of General Motors and/or General Motors of Canada Limited.

Printed in Canada, September 2009.



INTERIOR FABRIC COLOURS

DELUXE CLOTH standard on Canyon SLE-1 and SLE-2



19J – Ebony

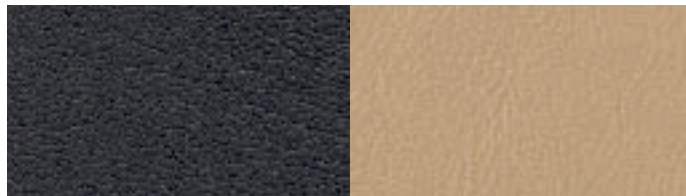
31J – Light Tan

VINYL available on Canyon SLE-1



92W – Medium Pewter

LEATHER SEATING SURFACES available on Canyon SLE-2 Extended and Crew Cabs



193 – Ebony

313 – Light Tan

EXTERIOR/INTERIOR COLOUR COMPATIBILITY

EXTERIOR ▼	INTERIOR ► MODEL ►	19 – Ebony SLE-1, SLE-2	31 – Light Tan SLE-1, SLE-2	92 – Medium Pewter Vinyl SLE-1
28 – Red Orange Metallic* ¹		•	•	•
41 – Onyx Black ¹		•	•	•
48 – Navy Blue		•	•	•
50 – Summit White		•	•	•
74 – Fire Red		•	•	•
79 – Merlot Jewel Metallic ¹		•	•	•
GGU – Gray Green Metallic		•	•	•
GGZ – Pure Silver Metallic		•	•	•

* Premium colour, available at extra cost.

¹ – Not available with Z08 Sport Suspension.

EXTERIOR COLOURS



28 – Red Orange Metallic¹



41 – Onyx Black¹



48 – Navy Blue



50 – Summit White



74 – Fire Red



79 – Merlot Jewel Metallic¹



GGU – Gray Green Metallic



GGZ – Pure Silver Metallic

* Premium colour, available at extra cost.

¹ – Not available with ZQ8 Sport Suspension.

The exterior colours in this brochure are as close to the actual vehicle production colours as the printing process allows. For more accurate colour samples, ask your sales consultant to see the dealer showroom vehicle colour display.

WHEELS



16" x 6" steel wheel, standard on SLE-1 models with Z85 Standard suspension (PP4)



16" x 6" aluminum, standard on SLE-2 2WD models with Z85 Standard suspension (PP2)



16" x 6" aluminum, standard on SLE-2 4x4 models with Z85 Standard suspension (PP1)



17" x 7" chrome-clad, standard on SLE-2 models with Z71 Off-Road Suspension Package (R03)



16" x 6.5" chrome-clad, available on SLE-2 models with Z85 Standard Suspension (R02/RP1)



18" x 8" Midnight Silver aluminum wheels, standard on SLE-2 2WD models with ZQ8 Sport Suspension (P67)

GMC

WE'LL TAKE YOU EXACTLY WHERE YOU WANT TO GO.

You demand more from a vehicle than ever before. Exactly the same can be said of GMC. For starters, you're looking for greener driving choices – GMC offers a range of vehicles that incorporate technology that helps reduce fuel consumption and emissions, like Active Fuel Management®, Variable Valve Timing and Direct Injection. Down the road, there are plug-in electric vehicles and other emerging technologies that point the way to a future of zero-emissions driving.

At GMC, we take pride in more than the quality of our vehicles. We are also proud to be the Official Vehicle Supplier of the Vancouver 2010 Olympic and Paralympic Winter Games. To help create a more sustainable 2010 Winter Games, we are committed to providing the most environmentally friendly fleet of all time through the supply of hybrid, alternate fuel, and other advanced green technology vehicles. The Drive is On.

For more information about GMC visit gmc.gm.ca



*GMC is a brand of General Motors of Canada,
the Official Vehicle Partner of the Vancouver
2010 Olympic and Paralympic Winter Games.
TM© 2008, VANOC. Used under License.



GMC
OFFICIAL
VEHICLE