

THE ALL-NEW
2007 GMC SIERRA



ALL-NEW
2007
SIERRA

GMC

INTRODUCING THE ALL-NEW 2007 SIERRA 1500.

IT'S WHAT'S NEXT.

How do you improve on the previous GMC Sierra 1500, a premium truck that led its segment in so many ways? With an all-new model that builds on its predecessor's acknowledged strengths and adds a whole new level of refinement for good measure. The 2007 Sierra 1500 delivers more power and more efficiency than ever before, along with innovative design and engineering, meticulous attention to detail and solid GMC quality backed by a 5-year/160,000-kilometre Powertrain Limited Warranty.* The result is a truck that redefines what you can expect from a full-size pickup. The all-new 2007 Sierra 1500. You demand professional grade. This is your next truck.

For more information about the all-new Sierra, visit our website at sierra.gm.ca

*Whichever comes first.

Note: All claims in this brochure are based on 2006 Model Year data for the GM Large Pickup segment and the latest published competitive information available at time of printing. Excludes other GM vehicles.



SIERRA CREW CAB



THE BAR DOESN'T GET HIGHER THAN THIS.

Sierra 1500 Crew Cab does it all. Towing is no problem, thanks to an unsurpassed trailer rating of up to 4763 kg (10,500 lb.).* Sierra Crew Cab leads its segment in cargo-carrying capability*, too, with a sturdy, intelligently designed box and a maximum payload rating of 925 kg (2039 lb.). And when the job at hand requires you to carry passengers, Sierra Crew Cab accommodates up to six in a cabin that's exceptionally comfortable and even roomier than the previous model. Factor in a level of refinement that was previously unheard of in the pickup truck world and you've got more than a new truck. You've got a truck that sets a whole new standard.

*When properly equipped. Excludes other GM vehicles.

SIERRA EXTENDED CAB



REDEFINING THE EXTENDED CAB PICKUP.

With its remarkable capability, versatility and great design, the all-new 2007 Sierra Extended Cab stands apart from ordinary trucks. There's a choice of three box lengths – 5 foot 8 inches, 6 foot 6 inches and 8 foot – so you can spec your truck just the way you want it. The rear-hinged rear doors open up a full 170 degrees, helping rear passengers enter and exit the truck and allowing excellent access to items stored behind the front seat. When the task involves hooking up a trailer, no light-duty pickup tows more than the Sierra Extended Cab.* Its maximum payload rating is impressive, too. Put it all together and you've got a truck that belongs in a class of one.

*When properly equipped.

INNOVATION

NEW IDEAS FOR THE WAY YOU LIVE.

The all-new Sierra is the product of some of the best, most innovative thinking in the automotive industry. Consider interior storage, for example. Inside Sierra, there's a place for virtually everything. Storage choices for smaller items include upper and lower gloveboxes, map pockets in the front doors and, on SLE models, a lockable 9.1-litre compartment located under the centre portion of the standard 40/20/40 divided front bench seat. The end result of these and other fresh ideas? A vehicle you'll find a pleasure to work and live with, day in and day out.



Sierra's available Cargo Management System features rails with adjustable tie-down hooks on the front and sides of the box. Rated to handle 227 kg (500 lb.) each, these hooks lock in place wherever you need them to help secure cargo. The functionality of Sierra's cargo box can be expanded even further with the addition of precision-engineered GM Accessories, such as a mesh bed divider (above left), a bed extender (far left) and side storage boxes that mount near the cab. For more on Sierra's Cargo Management System, visit sierra.gm.ca



The rear doors on Sierra Extended Cab models open up a full 170 degrees – the widest opening angle of any full-size pickup – to provide more convenient access to the rear seating area. To see these doors in action, visit sierra.gm.ca

The available Tailgate Package includes a lockable EZ Lift tailgate equipped with Torque Rod Assist, which makes the raising and lowering of the tailgate an easy one-handed operation. See it operate at sierra.gm.ca

COMFORT



YOU'VE NEVER SEEN A PICKUP QUITE LIKE THIS BEFORE.

Words like “elegant” and “refined” haven’t traditionally come up in discussions about pickup truck interiors. But you’ll find it’s almost impossible to talk about your 2007 Sierra without them. Regardless of whether you choose the attractive and functional cabin of the Sierra WT and Sierra SLE or the luxury-inspired interior of the Sierra SLT, your new pickup will deliver a remarkably quiet, comfortable ride for driver and passengers alike. You’ll also enjoy quality materials and a remarkable level of workmanship, with attention to detail that shows in the seat stitching and the fit and finish. Rear passengers in Crew Cab models will find more seating room than ever before, and for added utility, the standard stadium-style fold-up rear seat features a 60/40 split design (SLE and SLT models). Either side can be easily folded out of the way to allow room for both cargo and a rear-seat passenger, or the entire seat can be folded away for those occasions when you need maximum cargo room.

CONTROL



ADVANCED DESIGN FOR DRIVING.

The all-new Sierra is a showcase of excellence in pickup truck ergonomics. The position of the instrument panel has been moved down and forward, compared to the previous Sierra. As a result, you enjoy impressive forward vision and a more spacious interior with excellent accommodations for all passengers. In addition, the new front seats recline and adjust further back – modifications which make it easier to find just the right position behind the wheel. Once you're settled in, you'll notice Sierra's well-positioned controls, cleanly styled gauges and a Driver Information Centre with an engine hour meter, oil change notification and more. For an even higher level of control, Sierra SLT Crew Cabs feature electronically controlled Rainsense wipers and a heated washer fluid system that helps clear tree sap, insect residue and thin layers of ice from your windshield.



The confidence and convenience of OnStar and one-year of the Safe & Sound Plan are standard on all Sierra models. The available Directions & Connections Plan includes Turn-by-Turn Navigation* which features voice guidance to practically any destination.

*Turn-by-Turn Navigation is not available in certain areas. See your dealer for details.

AMENITIES

YOUR NEW SIERRA IS WHAT YOU MAKE IT.

With the new Sierra, the list of standard equipment – extensive though it may be – is just the beginning. GMC offers a wide range of available features to help you make your new truck even more comfortable, practical, enjoyable, luxurious – or any combination of the above.



With the power sliding rear window available on Sierra SLE and SLT Extended Cab and Crew Cab models, it's easy and convenient to increase airflow through the cabin.



For added ventilation and a brighter cabin, Sierra SLE and SLT Extended Cab and Crew Cab models offer an available power glass sunroof.



You know where you're going, but you don't always know how to get there. Sierra's DVD navigation system can help with on-screen directions and voice prompts. It's available on Sierra SLE and SLT Extended Cab and Crew Cab models.



Available on Sierra SLE and SLT Crew Cabs, the rear DVD entertainment system features a large 203 mm (8 in.) flip-down LCD screen. Separate DVD and CD slots allow rear passengers to watch a movie while the driver and front passenger listen to a CD.



Sierra SLE's standard 40/20/40 split front bench seat features a centre armrest storage compartment with room for 6.1 litres of gear. For even more space, there's a 9.1 litre compartment hidden beneath the centre seat cushion. Learn more at sierra.gm.ca



Sierra WT and SLE models feature an innovative dual glovebox design which helps keep small cargo items organized. See more at sierra.gm.ca

VORTEC POWER



WHERE POWER, TECHNOLOGY AND EFFICIENCY INTERSECT.

As you no doubt expect, the new Sierra displays a high level of technical sophistication in the powertrain department. There's a choice of Vortec engines, topped by a 367-horsepower VortecMAX 6.0L V8 with variable valve timing that helps maximize both power and fuel efficiency. Another cutting-edge technology feature, Active Fuel Management™, is shared by both the 6.0L and the 5.3L V8 engines. Active Fuel Management™ helps enhance fuel efficiency by temporarily deactivating four of the engine's eight cylinders in situations where full power isn't needed, such as when cruising on the highway. Sierra also offers a FlexFuel version of the Vortec 5.3L V8 capable of running on a fuel blend including up to 85 percent ethanol, which produces lower CO₂ emissions than gasoline. Bottom line: when it comes to performance, technology and fuel efficiency, Sierra exemplifies professional grade.

In light-load driving, Active Fuel Management™ deactivates two cylinders on each bank by applying oil pressure that unlocks special hydraulic valve lifters. The cylinders are automatically reactivated when increased power is required. Transitions between the engine's four- and eight-cylinder operating modes are so seamless, they're virtually imperceptible to the driver. Learn more about Active Fuel Management™ at sierra.gm.ca

The powerful and refined VortecMAX 6.0L V8 produces 367 horsepower and 375 lb.-ft. of torque. In addition to variable valve timing and Active Fuel Management™, its leading-edge features include drive-by-wire electronic throttle control and digital cam-timing technology.



TOWING

YOUR BEST CHOICE FOR YOUR BIG CHALLENGES.

When it comes to towing, the new Sierra puts the competition on the trailer. Equipped with the available VortecMAX Performance Package, Sierra is rated to tow up to 4763 kg (10,500 lb.) – a figure unsurpassed by any competitive half-ton pickup.* The VortecMAX Performance Package makes a great truck even greater by adding premium features like a 367 horsepower 6.0L V8 engine, a super-duty transmission with improved engine and transmission cooling, a larger rear axle with 9.5 in. diameter ring gear, four-wheel disc brakes with ABS, a locking rear differential, StabiliTrak (if not already so equipped) and more. Sierra also offers available extendible wide load mirrors, which can help you see better to the rear when you have a trailer hooked up. The bottom line: For trailer towing, Sierra is the heavy favourite among light-duty trucks.

*Based on 2006 Model Year data for the GM Large Pickup segment and the latest published competitive information available at time of printing. Excludes other GM vehicles.

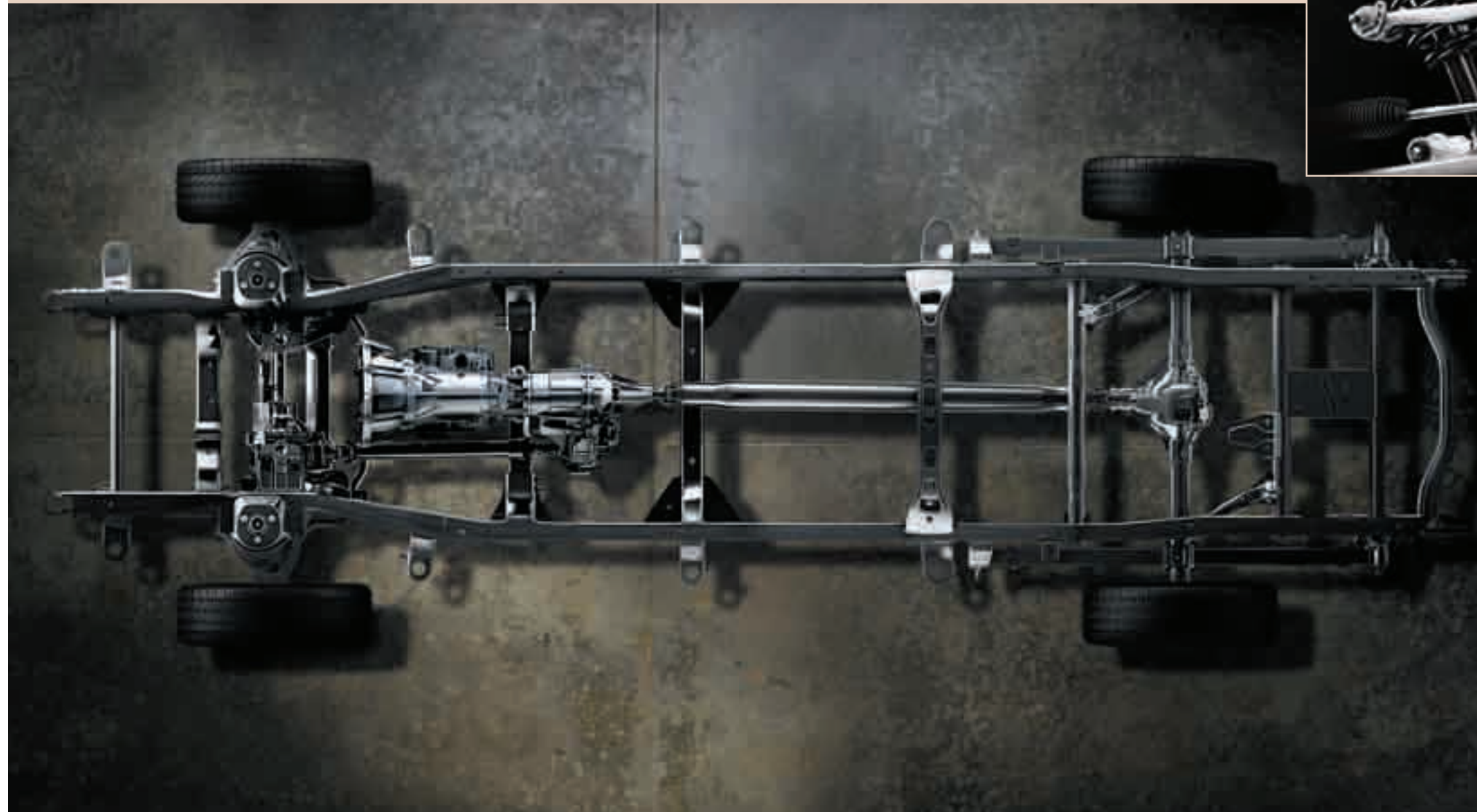
GM-EXCLUSIVE AUTO-LOCKING REAR DIFFERENTIAL
When one rear tire is rotating approximately 100 rpm faster than the other, the available Eaton locking rear differential engages automatically. Both wheels are then driven at the same speed, so more torque is sent to the wheel with grip to help keep you from getting stuck. See it at sierra.gm.ca



TECHNOLOGY

AN OBJECT LESSON IN TRUCK TECHNOLOGY.

GMC has been a leader in truck technology for more than a century, and the new Sierra is a rolling showcase of everything we've learned. The new frame, for instance, is an extremely stiff boxed design that provides a solid structure and improved crash protection. It has also been engineered with increased thickness in key places, to help dampen out noise and harshness. The axles have been revised for quieter performance and greater durability. Hydraulic engine mounts are used on models equipped with the Vortec 5.3L and 6.0L V8s, to help isolate the passenger compartment from noise and vibration. To learn more about the strengths of the new Sierra chassis, visit sierra.gm.ca



COIL-OVER-SHOCK FRONT SUSPENSION
Compared with the torsion bar front suspension it replaces, Sierra's new coil-over-shock suspension is lower in unsprung weight. This results in improved handling and a smoother ride in all conditions.

SUSPENSION CHOICES

Sierra suspension systems include:

- **Z83 Solid Smooth Ride** suspension with 46 mm gas-charged monotube front shocks, 35 mm twin-tube rear shocks and a 32 mm front stabilizer bar
- **Z85 Increased Capacity Handling/Trailer** suspension with front and rear 46 mm gas-charged monotube shocks and a 34 mm front stabilizer bar
- **Z60 High Performance** suspension with front and rear 46 mm monotube shocks and lowered ride height
- **Z71 Off-Road** suspension with 46 mm monotube shock absorbers, off-road jounce bumpers and a heavy-duty stabilizer bar. Also includes a high capacity air cleaner, skid plates, locking differential and Z71 decals. Available on 2WD and 4x4 SLE and SLT models.

WIDE TRACKS

Both the front and rear tracks are wider than on previous Sierra models. The benefits of this broader platform includes improved handling and a smoother, more stable ride, especially on rough surfaces.

HIGH-STRENGTH REAR RAILS

The new rear boxed sections replace C-channels, with rail height increased by more than 35 mm (1.5 in.). Rails are also thicker where loads are more likely, and taper toward the rear, optimizing strength and ride quality.

HIGH-STRENGTH FRONT FRAME RAILS

The new Sierra frame features extremely strong, fully boxed hydroformed front frame rail sections. The quality fabrication allowed by the hydroforming process contributes to a very precise fit at all bolting points.

RACK-AND-PINION STEERING

Power-assisted rack-and-pinion steering provides excellent on-centre feel and immediate, precise response. It's used on both 2WD and 4x4 models for 2007.

SPLAYED REAR SHOCK ABSORBERS

To enhance ride quality, Sierra's rear shock absorbers are angled outward with a more upright stance than in previous models. The result is a more linear response to inputs and increased stability.

ONSTAR VEHICLE DIAGNOSTICS

Sierra's standard OnStar system can remotely monitor the vehicle's engine, transmission and other systems and provide a monthly diagnostic report via email. For more information on OnStar see page 26.

SEGMENT-LEADING AERODYNAMICS

A Sierra technical advantage, not on display here, is its best-in-class 0.43 drag coefficient, a function of the truck's raked 57° windshield, sleek body panels and precise fit and finish. Benefits include great looks, improved fuel efficiency and a quieter interior.

PROTECTION

SIERRA HAS ALL THE ANGLES COVERED.

The new Sierra works to keep you safe in three distinct ways. First and most important, Sierra helps you avoid accidents whenever possible. Logical controls, responsive handling and braking are essential elements in this strategy. So are features like Rainsense windshield wipers and heated washer fluid, which improve your ability to see, and technologies like tire pressure monitoring and rear parking assist, which alerts you to objects behind your truck when you're backing up. When a crash proves unavoidable, another group of Sierra technologies takes over to help keep you and your passengers from harm. These include safety-cage construction around the passenger compartment, a 360-degree impact monitoring system, standard frontal and available side-curtain air bags and LATCH attachments that help you properly secure child seats in the rear seating row. Finally, Sierra continues to look after you even when the crash is over, thanks to its standard OnStar system. Immediately after a serious impact, an OnStar advisor will attempt to contact the vehicle and, if necessary, can automatically dispatch emergency services. For more information on OnStar, see page 26.

DUAL-STAGE FRONTAL AIR BAGS*

To help reduce the risk of injury, Sierra's air bags adjust their force of deployment based on the severity of the impact. In addition, sensors in the passenger seat measure the weight of the seat's occupant and disable the front air bag automatically if it detects a child or a smaller adult.

HEAD CURTAIN SIDE-IMPACT AIR BAGS*

In certain side impacts or rollover situations, the available head curtain side-impact air bags unfurl from the roof rail and act like a protective curtain for the occupants of the outboard seats in both the front and rear rows.

LATCH

Standard in the rear seats of all Extended Cab and Crew Cab models, the LATCH (Lower Anchors and top Tethers for Children) system adds to children's safety by making it easier to ensure that child seats are securely installed.

FRONT CRUSH ZONE

In a serious frontal impact, the front sections of the new Sierra's hydroformed frame rails are designed to crumple in a controlled fashion to help absorb dangerous crash energy and keep it from affecting the passenger compartment.

STABILITRAK

Standard on all Sierra Crew Cabs and available on Extended Cab models, the StabiliTrak vehicle stability control system automatically helps correct lateral skids, usually before the driver realizes they've begun.

TIRE PRESSURE MONITORING SYSTEM

Improperly inflated tires increase fuel consumption, accelerate tire wear and can reduce vehicle control. Any time your Sierra is riding on a tire that is low, the standard tire pressure monitoring system will alert you via the Driver Information Centre.

REAR PARKING ASSIST

Available on Sierra SLE and SLT Extended and Crew Cab models, the rear parking assist system uses ultrasonic waves to detect obstacles behind the truck and alerts you to their presence with audible and visible signals. See a demonstration at sierra.gm.ca

*A NOTE ON CHILD SAFETY: Always use safety belts and proper child restraints, even in vehicles equipped with air bags. Even with the Passenger Sensing System, children are safer when properly secured in a rear seat. Never place a rear-facing infant restraint in the front seat of any vehicle equipped with an active air bag. Refer to the vehicle Owner's Manual and child safety seat instructions for more information.



ACCESSORIES

TAKE YOUR SIERRA TO A WHOLE NEW LEVEL.

How do you make the all-new Sierra even more capable, innovative and refined? By upgrading its appearance and utility with carefully selected GM Accessories, such as the sliding bed divider, sliding toolbox and other items that integrate with the available factory-installed Cargo Management System. GM Accessories are the only accessories engineered by the same team that created your new GMC truck, ensuring excellent fit, finish and functionality. And only GM Accessories are backed by GM's 3-year/60,000 km New Vehicle Limited Warranty.* They can also be included in your new-vehicle lease or finance agreement through GMAC. Ask your dealer for a complete list of the GM Accessories available to bring out the best of your new Sierra. Or visit gmcanada.com

*Whichever comes first, when permanently installed by the dealer at the time you purchase or lease your new vehicle.



AVAILABLE SIERRA ACCESSORIES INCLUDE:

- Sliding tool box
- Sliding bed divider
- Bed extender
- Overhead utility rack
- Bedliner
- 20-inch wheels
- Recovery hooks
- Sliding side storage box
- Dual headrest DVD player
- Door sill plates and step shields
- Soft roll-up tonneau cover
- Hard shell tonneau cover (available in 2007)
- Tubular assist steps
- Moulded splash guards.



COMMUNICATIONS AND ENTERTAINMENT TECHNOLOGY.

OnStar* uses advanced communications technology to enhance your safety, security and convenience. OnStar Advisors can provide a wealth of information and perform a variety of diagnostic services.



They can also provide assistance in an emergency. No wonder more

than four million people have become OnStar subscribers and over 12 million calls are made each month on the built-in voice-activated, hands-free system. OnStar and one year of the Safe & Sound Plan is standard on all GMC Sierras. The Directions & Connections Plan is also available. See your dealer for more information on plans and services.

*OnStar services require vehicle electrical system (including battery), wireless service, and GPS satellite signals to be available and operating for features to function properly. Not all OnStar features are available on all vehicles. OnStar acts as a link to existing emergency service providers. OnStar Hands-Free Calling requires a Hands-Free enabled vehicle, prepaid minutes and existing OnStar service contract. Subscription Service Agreement required.

What's convinced more than six million people to subscribe to XM Satellite Radio? How about the largest playlist on the planet, with musical genres that span everything from decades to dance, rock to rap and country to classical — broadcasting the most commercial-free music in digital quality sound? Or is it the news, talk, comedy and sports channels — including more than 1,000 NHL games, and all available from coast to coast?*



XM has revolutionized radio as we know it. And now you can enjoy XM Satellite Radio in your next General Motors vehicle. GM is the first automaker to offer factory-installed Satellite receivers.

Ask your dealer for more information.

*Includes 3 trial months beyond which service fees apply. Available in 10 Canadian provinces and 48 contiguous United States.

A NEW LEVEL OF CONFIDENCE.

It isn't only the capability and refinement of the all-new 2007 Sierra that will fill you with confidence. Sierra is also backed by the best coverage in Canada:

- 3-year/60,000 km* New Vehicle Limited Warranty
- 5-year/160,000 km* Powertrain Limited Warranty, with no deductibles on repairs and the warranty is fully transferable at no charge
- 5-year/160,000 km* Courtesy Transportation**
- 5-year/160,000 km* 24/7 Roadside Assistance**
- 6-year/160,000 km* rust-through perforation coverage
- 8-year/130,000 km* coverage on catalytic converters and powertrain control modules (PCMs).

*Whichever comes first. **Conditions and limitations apply, see dealer for details.

OTHER OWNERSHIP PRIVILEGES AND PROGRAMS:†

- **GM Protection Plan (GMPP)** — the only extended service contract backed by the resources and commitment of General Motors; GMPP may be purchased at the time of your sale or lease, or subsequently during the New Vehicle Limited Warranty.
- **GM Goodwrench Service** — with GM-certified technicians and GM-approved parts, nobody knows your GM vehicle better.

†Conditions and limitations apply.

TO HELP YOU PURCHASE OR LEASE A NEW VEHICLE:

- **GMAC Financing** — on-the spot financing at your GM dealership^{††}
- **GMAC SMARTLEASE** — a smart alternative to traditional financing^{††}
- **GM Student Bonus Program** — GM will cover the first two purchase finance or lease payments and the lease security deposit on eligible new GM vehicles for students and recent graduates of high school, college or university[†]
- **The GM Card** — eligible cardholders may be able to redeem up to \$3500 in GM Card® Earnings toward the total purchase price or lease down payment on selected vehicles.[†] For more information on The GM Card please call 1-800-461-3279.

†Conditions and limitations apply. ††Subject to eligibility.

INFORMATION RESOURCES:

You can find more information about these programs from your GM dealer, or at these information centres:

- The GM website at gmcanada.com
- The GM Customer Communication Marketing Centre at **1-800-GM-DRIVE** (1-800-463-7483 or 1-800-263-3830 for TDD users)
- For more information about GMAC visit gmcanada.com or call **1-800-616-4622**.



GMAC is a registered trademark of the General Motors Acceptance Corporation.

OnStar, the OnStar logo and the OnStar button are registered trademarks of the OnStar Corporation.

PASS-Key III and TheftLock are registered trademarks of Delphi Automotive Systems.

Bose is a registered trademark of the Bose Corporation.

Radio Data System (RDS) is a registered trademark of the U.S. National Association of Broadcasters.

The XM name and related logos are registered trademarks of XM Satellite Radio Inc.

COPYRIGHT

©Copyright 2006 General Motors of Canada Limited. All Rights Reserved. All text, images, graphics, and other materials in this brochure are subject to the copyright and other intellectual property rights of General Motors Corporation and/or General Motors of Canada Limited. These materials may not be reproduced, distributed or modified without the express written permission of General Motors Corporation and/or General Motors of Canada Limited.

Printed in Canada, November 2006.

SIERRA MODEL SELECTOR

Series	Cab Type	Model Number	Wheelbase mm (in.)	Drivetrain	Gross Vehicle Weight Rating Max. – kg (lb.)	Maximum Payload* kg (lb.)	Pickup Box Length (ft. in.)	Max. Gross Trailer Weight** – kg (lb.)	Seating Std./Opt.
1500	Regular Cab	C10703	3023 (119.0)	2WD	2903 (6400)	885 (1952)	6' 6"	3720 (8200)	3/2
		C10903	3378 (133.0)	2WD	2903 (6400)	822 (1812)	8'	3629 (8000)	3/2
		K10703	3023 (119.0)	4x4	2903 (6400)	777 (1713)	6' 6"	4037 (8900)	3/2
		K10903	3378 (133.0)	4x4	3084 (6800)	839 (1850)	8'	4037 (8900)	3/2
1500	Extended Cab	C10553	3401 (133.9)	2WD	3084 (6800)	830 (1829)	5' 8"	4037 (8900) [†]	6/5
		C10753	3645 (143.5)	2WD	2903 (6400)	980 (2160)	6' 6"	4672 (10,300) [†]	6/5
		C10953	4000 (157.5)	2WD	3130 (6900)	765 (1687)	8'	3402 (7500)	6/5
		K10553	3401 (133.9)	4x4	3084 (6800)	752 (1657)	5' 8"	3901 (8600) [†]	6/5
		K10753	3645 (143.5)	4x4	3175 (7000)	913 (2013)	6' 6"	4763 (10,500) [†]	6/5
		K10953	4000 (157.5)	4x4	3175 (7000)	714 (1574)	8'	3765 (8300)	6/5
1500	Crew Cab	C10543	3645 (143.5)	2WD	3084 (6800)	925 (2039)	5' 8"	4627 (10,200) [†]	6/5
		K10543	3645 (143.5)	4x4	3175 (7000)	912 (2010)	5' 8"	4763 (10,500) [†]	6/5

*Payload includes passengers, equipment and cargo. Higher payloads may require optional equipment. Payloads are approximate and will change with the addition of optional or aftermarket equipment. Consult your dealer or equipment supplier for details.

**Trailer ratings are calculated assuming only the driver is in the tow vehicle. Trailer Weight (also called Trailer Towing Capacity) is the weight of a trailer, its load or contents plus any other weight added to the tow vehicle. Ball-hitch ratings are shown.

†Many trailer towing applications require additional optional equipment. For details, ask your Sales Consultant about the GMC Trailer Towing Guide.

††When equipped with the VortecMAX Performance Package.

SIERRA ENGINE & TRANSMISSION AVAILABILITY

Series	Cab Type	Model Number	Vortec 4.3L V6 ^{1, 2} 195 hp @ 4600 rpm 260 lb.-ft. torque @ 2800 rpm	Vortec 4.8L V8 ¹ 295 hp @ 5600 rpm 305 lb.-ft. torque @ 4800 rpm	Vortec 5.3L V8 ¹ 315 hp @ 5200 rpm 338 lb.-ft. torque @ 4400 rpm	VortecMAX 6.0L V8 ¹ 367 hp @ 5500 rpm 375 lb.-ft. torque @ 4300 rpm
1500	Regular Cab	C10703	0	S	0 ³	–
		C10903	0	S	0 ³	–
		K10703	0	S	0 ³	–
		K10903	0	S	0 ³	–
1500	Extended Cab	C10553	0	S	0	0
		C10753	0	S	0 ³	0 ⁵
		C10953	–	–	S ³	–
		K10553	–	S	0 ³	0
		K10753	–	S	0 ³	0 ⁵
		K10953	–	–	S ³	–
1500	Crew Cab	C10543	–	S	0 ³	0 ⁵
		K10543	–	S	0 ^{3,4}	0 ⁵

S = Standard O = Optional

1 – 4-speed automatic transmission is standard on all models.

2 – Interim availability.

3 – Available Vortec 5.3L V8 engine, capable of running on E85.

4 – Aluminum engine block Vortec 5.3L V8.

5 – Available with VortecMAX Performance Package.

Note: Some up-level series include a larger engine than indicated on this chart. Please ask your Sales Consultant for details.

A WORD ABOUT THIS BROCHURE

Some of the equipment shown or described throughout this brochure may be available at extra cost. We have tried to make this brochure comprehensive and factual. We reserve the right, however, to make changes at any time, without notice, in prices, colours, materials, equipment, specifications, models and availability. Specifications, dimensions, measurements, ratings and other numbers in this brochure and other printed materials provided at the dealership or affixed to vehicles are approximates based upon design and engineering drawings and prototypes and laboratory tests. Your vehicle may differ due to variations in manufacture and equipment. Since some information may have been updated since the time of printing, please check with your GM dealer for complete details. General Motors of Canada Limited reserves the right to lengthen or shorten the model year for any product for any reason, or to start and end model years at different times.

A WORD ABOUT ASSEMBLY

GM vehicles are equipped with engines and components produced and assembled by different operating units of General Motors, its subsidiaries and suppliers and these engines and components may change or be obtained from different sources from time to time. All such engines and components are approved for use in GM vehicles. Certain equipment ordered may be unavailable at the time of assembly and we suggest that you verify that your vehicle includes the equipment you ordered, or if there are changes, that they are acceptable to you.

TRADEMARKS

The marks appearing in this brochure including, but not limited to: General Motors, GM, the GM Canada emblem, the GM Canada website address, the GM Accessories logo, GMC, the GMC logo and their respective logos, emblems, slogans and vehicle model names and body designs; and other marks such as Z71, Autotrac, Rainsense, SmartLease, Solar-Ray, StabiliTrak, and Vortec are all trademarks of General Motors Corporation and/or General Motors of Canada Limited, its subsidiaries, affiliates or licensors.

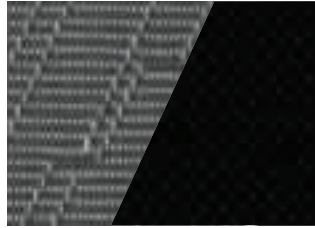
FABRICS. COLOURS. WHEELS.

Interior Fabrics

Standard on Sierra WT models.



88 – Dark Titanium Vinyl¹

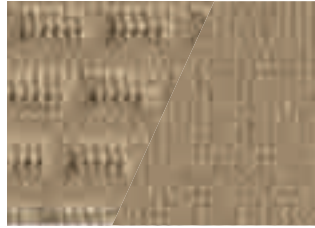


88 – Dark Titanium Cloth¹

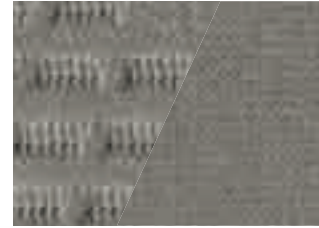
Standard on Sierra SLE models.



19 – Ebony Cloth



31 – Light Cashmere Cloth²



83 – Light Titanium Cloth



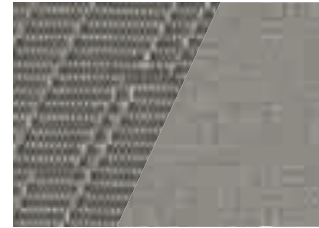
Available on Sierra SLE models.



19 – Ebony Premium Cloth



31 – Light Cashmere Premium Cloth²



83 – Light Titanium Premium Cloth

Standard on Sierra SLT models.
Available on Sierra SLE models.



19 – Ebony Leather



31 – Light Cashmere Leather²



83 – Light Titanium Leather

¹ – Not available with Sport Red Metallic.
² – Not available with Silver Birch Metallic.

Exterior Colours



16 – Steel Gray Metallic



25 – Deep Blue Metallic



41 – Onyx Black



46 – Stealth Gray Metallic



50 – Summit White



59 – Silver Birch Metallic



63 – Sport Red Metallic*



74 – Fire Red



81 – Medium Brown Metallic*

*Not available on Work Truck (WT).
Due to limitations in the printing process, the colours shown may differ slightly from the actual colour. Please see your Sales Consultant for specific colour and model availability and compatibility.

Exterior/Interior Colour Compatibility

Exterior	Interior				
	19 – SLE, SLT Ebony	31 – SLE Light Cashmere with Ebony Accents**	33 – SLT Light Cashmere with Dark Titanium Accents**	83 – SLE, SLT Light Titanium with Dark Titanium Accents**	88 – WT Dark Titanium
16 – Steel Gray Metallic	•	•	•	•	•
25 – Deep Blue Metallic	•	•	•	•	•
41 – Onyx Black	•	•	•	•	•
46 – Stealth Gray Metallic	•	•	•	•	•
50 – Summit White	•	•	•	•	•
59 – Silver Birch Metallic	•	•	•	•	•
63 – Sport Red Metallic*	•	•	•	•	•
74 – Fire Red	•	•	•	•	•
81 – Medium Brown Metallic*	•	•	•	•	•

*Not available on Work Truck (WT).
**Accents apply to instrument panel and door trim panels only.

Wheels



17-inch painted steel wheel, standard on WT models.



17-inch chrome-style steel wheel, standard on SLE and available on WT models with SL Package.



17-inch deluxe aluminum wheel, available on SLE models.



17-inch Sport aluminum wheel, standard on SLT and available on SLE models with Z71 Off-Road Package.



20-inch machined bright aluminum wheel, available on SLE and SLT short or standard box models.



EXCEPTIONAL COVERAGE FOR AN EXCEPTIONAL VEHICLE.

When you choose any new GMC model, exceptional capability and refinement are only part of the package. General Motors supports your investment in your new GMC vehicle with the best coverage in Canada.

160,000 KM / 5 YEAR POWERTRAIN LIMITED WARRANTY†

160,000 KM / 5 YEARS OF COURTESY TRANSPORTATION†

160,000 KM / 5 YEARS OF 24/7 ROADSIDE ASSISTANCE†

We have you covered in other ways, too. One example is OnStar – the world's most comprehensive in-vehicle communications, security and diagnostics service. It adds to your convenience and peace of mind every time you take the wheel of your new vehicle and is available exclusively on General Motors vehicles.

A CENTURY OF ENGINEERING PROWESS. How can GM offer Canada's best coverage on all GMC vehicles? Because today's GMC models represent everything we've learned in over a hundred years of engineering trucks to meet the needs of some of the world's most demanding customers. Every 2007 GMC model combines innovative design, cutting-edge technology and lasting quality. The result is a family of vehicles that defines professional grade for the industry.

†Whichever comes first. Excludes Medium-Duty Trucks. See dealer for limited warranty details.



vancouver 2010



OFFICIAL VEHICLE*

*GMC is a brand of General Motors of Canada the Official Vehicle Partner of the Vancouver 2010 Olympic and Paralympic Winter Games.

™ © 2005, VANOC. Used under License.