

2010

YUKON & YUKON XL



GMC

BEST OF BREED.

How does the Yukon family set the standard for other full-size SUVs? With unmatched available power, torque and towing capacity. With stylish, sophisticated cabins equipped for the comfort, convenience and safety of every occupant. With gas-saving features, including Active Fuel Management® and six-speed automatic transmissions, that help produce the best 2WD and 4x4 fuel efficiency in the class.* With a choice of half-ton and three-quarter-ton configurations and a full range of models, including Hybrid versions and the top-of-the-line 403-horsepower Yukon Denali. And with professional-grade GMC engineering in every component of every model. Here's the bottom line: If you're looking for excellence in a full-size SUV, your search is over.

*2010 Yukon data based on GM testing in accordance with approved Transport Canada test methods. Competitive information based on Natural Resources Canada's 2009 Fuel Consumption Guide for 2009 GM Large SUV segment and published information available at time of printing. Your actual fuel consumption may vary.



LEFT: YUKON HYBRID SLT, shown in Pure Silver Metallic. RIGHT: YUKON DENALI, shown in Onyx Black with available equipment.

THE SUV FOR ALL REASONS.

Whatever you're looking for in a full-size SUV – power, space, efficiency, capability, you name it – you'll find it in a Yukon or Yukon XL. These are premium vehicles engineered to transport substantial quantities of people and cargo, and to handle every challenge with comfort, confidence and style. Every model performs to a world-class standard, thanks to a muscular Vortec V8 engine. Yet Yukon delivers the best fuel economy in the segment – just 14.4 litres per hundred kilometres in the city and 9.5 litres per hundred kilometres on the highway for Yukon 1500 4x4.* A trailering package is standard across the board. Properly equipped, Yukon 1500 can handle trailers weighing up to 3810 kg (8400 lb.), and XL 2500 can tow up to a whopping 4355 kg (9600 lb.) – the most of any full-size SUV. It all adds up to an irresistible combination of strengths.

*2010 Yukon data based on GM testing in accordance with approved Transport Canada test methods. Competitive information based on Natural Resources Canada's 2009 Fuel Consumption Guide for 2009 GM Large SUV segment and published information available at time of printing. Your actual fuel consumption may vary.



YUKON XL 2500 SLT, shown in Pure Silver Metallic.

ENGINEER'S CHOICE.

The more you know about engineering, the more likely you'll choose a Yukon as your personal SUV. Every Yukon model starts with an amazingly strong, precision-fabricated high-strength steel frame and professional-grade truck chassis components, including a coil-over-shock front suspension and a sturdy five-link rear suspension on 1500 models, available in a choice of model-specific tunings. Yukon XL 2500 models utilize rear multi-stage leaf springs to handle higher loading capacities. Every Yukon also includes an electronic stability control system – called StabiliTrak® – that's proven to reduce the risk of a fatal single-vehicle crash by a tremendous 63 percent.* Drivetrain choices include 2WD, electronic Autotrak™ on 4x4 models and, on Denali models, standard full-time all-wheel drive (AWD). And the list of intelligent technologies goes on. Case in point: the Grade Braking feature integrated into every Yukon transmission. On downhill slopes it can automatically use the engine's compression to help control your speed and reduce the burden on your Yukon's powerful four-wheel disc anti-lock braking system.

* According to information published by the US Department of Transportation's National Highway Traffic Safety Administration, July 2007. www-nrd.nhtsa.dot.gov/Pubs/810794.PDF



YUKON DENALI, shown in Onyx Black with available equipment.

THE STATE OF THE SUV ART.

Named for North America's tallest peak, Yukon Denali and Yukon XL Denali are towering achievements in their own right. Visually they're a statement of unabashed capability and confidence, with bold chromed 20-inch aluminum wheels and, of course, those Denali-signature bright honeycomb upper and lower grilles. Full-time all-wheel drive and a comfortable yet controlled AutoRide™ suspension are standard, as is a heavy-duty cooling package that's perfect for those planning on taking advantage of Yukon Denali's 3674 kg (8100 lb.) towing capability. Motivation comes from an advanced 403 horsepower Vortec 6.2L V8 teamed with a fuel-saving six-speed automatic transmission with Driver Shift Control. Or choose the class-leading fuel efficiency of the new-for-2010 Yukon Denali Hybrid.*

* Competitive information based on Natural Resources Canada's 2009 Fuel Consumption Guide for 2009 GM Large SUV segment and published information available at time of printing. Your actual fuel consumption may vary.



The available Side Blind Zone Alert system uses radar beams to sweep adjacent lanes of traffic. When it detects a vehicle entering the blind zone on either side of your Denali, it alerts you via a visual warning in the appropriate exterior rear-view mirror.

IT'S GOT IT ALL.

Inside Yukon Denali or Yukon XL Denali, you're surrounded by the best of everything. The first and second-row seats are heated and appointed in fine perforated leathers, and the front buckets are also cooled and fitted with twelve-way power adjustments, including a four-way lumbar adjuster and a driver-side memory function. The second-row seats feature a power fold-and-tumble system that tucks them out of the way at the touch of a button.* A DVD navigation system is available and Bluetooth® hands-free mobile phone connectivity is standard in both models. For your listening pleasure, the standard Bose® audio system includes AudioPilot® noise reduction, a technology that automatically adjusts the character of the sound to maintain a consistent subjective listening experience, even if you should open a window. There's also a USB port that neatly integrates your iPod® with the sound system and charges its battery while you're en route.

*Except Yukon Hybrid Denali.

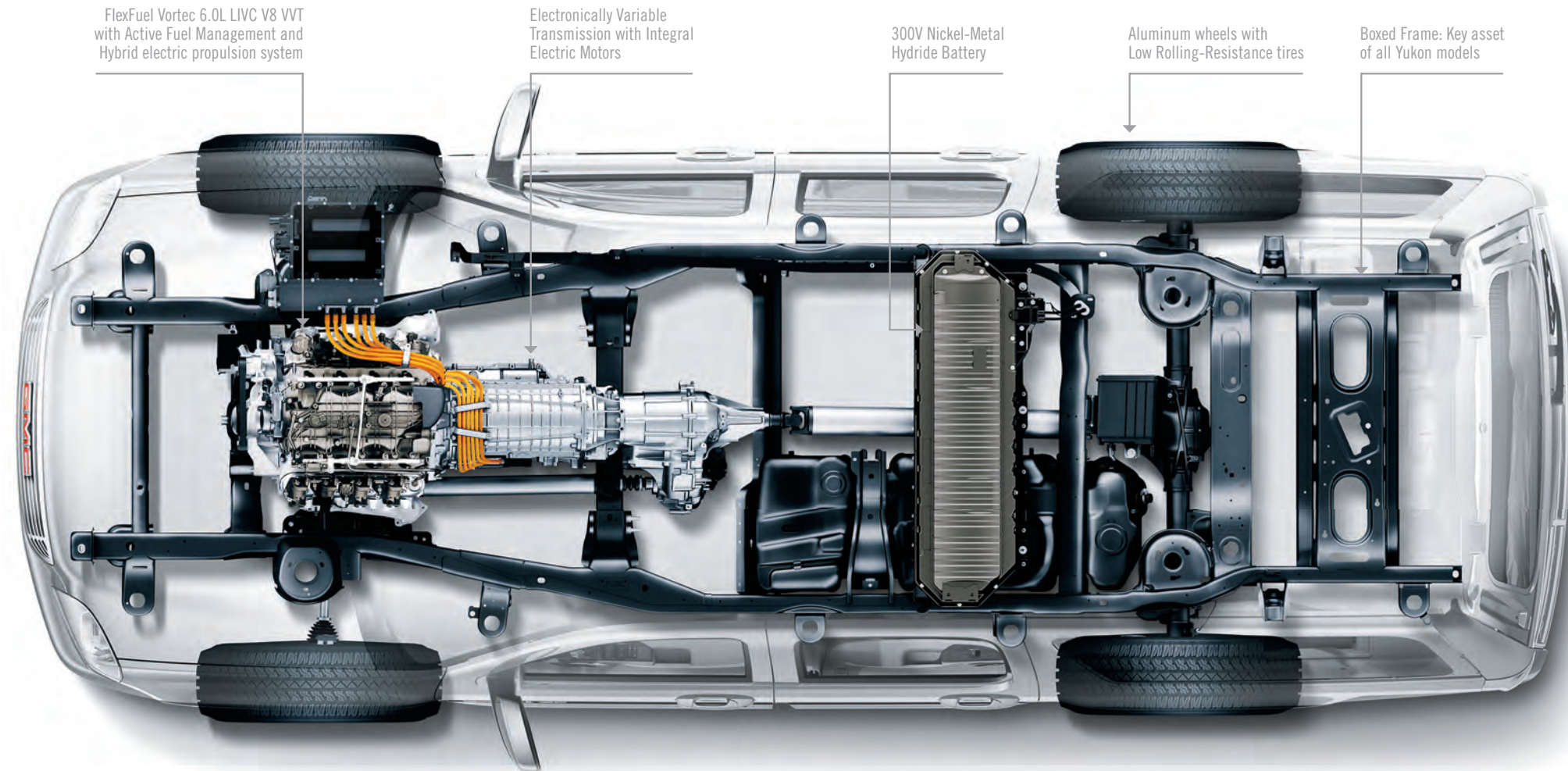


YUKON DENALI, shown with standard perforated leather-appointed seats in Ebony.

IMPOSSIBLE. BUT TRUE.

Imagine, if you will, a full-size SUV with uncompromised performance, seating for eight and a trailer rating of up to 2812 kg (6200 lb.). Now imagine that vehicle achieves better city fuel efficiency than much smaller vehicles such as the Volkswagen Passat and Ford Fusion, even when they're equipped with four-cylinder engines.* Sound impossible? The visionary engineers at GMC made it a reality. Thanks to high-tech two-mode hybrid technologies – including a 300-volt nickel-metal hydride Energy Storage System (ESS), an advanced Electronically Variable Transmission (EVT) and a regenerative braking system – Yukon Hybrid and the luxurious new-for-2010 Yukon Denali Hybrid can operate at speeds of up to 48 kilometres per hour in zero-emission electric-only mode. The electric assist also helps optimize the efficiency of the 332 horsepower 6.0-litre V8 engine whenever possible. The result is city fuel consumption of just 9.8 litres per hundred kilometres.* Yukon Hybrid. Impossible no more.

*2010 Yukon Hybrid ratings based on GM testing in accordance with approved Transport Canada test methods. Competitive information based on Natural Resources Canada's 2009 Fuel Consumption Guide and published information available at time of printing. Your actual fuel consumption may vary.



All Yukon Hybrid models feature the convenience of a standard Integrated DVD navigation system with voice recognition. The Navigation screen also serves as a display for the Rearview Camera System and the Hybrid power-flow display, as shown.



HYBRID



ACTIVE FUEL MANAGEMENT®



ETHANOL E85

IS THERE ANYTHING YUKON CAN'T DO?

With the keys to a Yukon or Yukon XL in your pocket, you know you can easily handle virtually any combination of people and cargo. Both models can seat up to nine occupants* in comfort, and the power release fold-and-tumble second-row seats available on SLT models make accessing the third-row seat a breeze. With a full quota of passengers on board, Yukon still has space for 479 litres of gear, while Yukon XL can accommodate a massive 1297 litres. For additional cargo space and even bigger loads, the second- and third-row seats fold away easily, and the third-row seat can be removed. So configured, Yukon's maximum cargo capacity is 3084 litres and Yukon XL's is a vast 3891 litres. Both interiors also pass the ultimate test: carrying 4' x 8' sheets of building material.

*When properly equipped.



Cargo capacity: Yukon 479 L, Yukon XL 1297 L
Seating: 8 as shown, up to 9 with front bench seat.



Cargo capacity: Yukon 1708 L, Yukon XL 2549 L
Seating: 5 as shown, up to 6 with front bench.



Cargo capacity: Yukon 1708 L+, Yukon XL 2549 L+
Seating: 3 as shown, up to 4 with front bench.



Cargo capacity: Yukon 3084 L, Yukon XL 3891 L
Seating: 2 as shown, up to 3 with front bench.



YUKON XL SLT INTERIOR, shown in Ebony with 3rd-row removed and 2nd-row partially folded.

IT'S A GOOD FEELING.

The Yukon driving environment has been carefully developed to foster a sense of ease and control every time you take the wheel. You'll find visibility to be excellent in every direction, thanks to generous expanses of tinted glass and large, heated, power-adjustable mirrors. The analogue gauges are designed to communicate vital driving information instantly, and key additional data – such as individual tire pressure – is provided via the standard multi-function Driver Information Centre. Then there are the switches and controls, all logically designed and positioned precisely where you expect them to be. The result: fewer distractions from the task at hand and a greater feeling of confidence in every situation.



The available Rearview Camera System displays a wide-angle view of the area behind your Yukon any time the transmission's reverse gear is engaged. The image appears on the interior rear-view mirror or, when so equipped, on the DVD navigation system screen. Standard on Hybrid Models.



YUKON SLT instrument panel, shown with available equipment.

SUPERIOR DOWN TO THE LAST DETAIL.

The overall brilliance of Yukon and Yukon XL – the impressive levels of performance, comfort, reliability and safety that they consistently deliver – all derive from GMC's dedication to technical superiority. Described below are a few of the features that make Yukon and Yukon XL such outstanding SUVs.

FIVE-STAR CRASH TEST RATING

Yukon earned the U.S. government's highest rating – five stars – for its performance in frontal and side-impact testing.*

VORTEC V8 POWER

With horsepower ranging from 320 to 403, FlexFuel capability and a host of advanced features like Variable Valve Timing (VVT) and Active Fuel Management, the Yukon family offers a powerful, efficient Vortec engine for every purpose.

6-SPEED AUTOMATIC TRANSMISSIONS

Every Yukon and Yukon XL model (except Hybrids) features a fuel-saving 6-speed automatic transmission with the added control of tap-up/tap-down Driver Shift Control.



FIVE-STAR FRONTAL AND SIDE-IMPACT CRASH TEST RATING*

TRAILERING EQUIPMENT

Every Yukon and Yukon XL comes with a trailer hitch platform, a 2-inch (51 mm) hitch receiver and a 7-wire trailering harness as standard equipment. An integrated trailer brake controller and a heavy-duty cooling package are standard on Yukon XL 2500 and available on other models.

FULLY BOXED FRAME

A rigid frame provides a strong platform for Yukon's systems and is engineered for superior crash protection.

HYDROFORMED COMPONENTS

High-tech fabrication process results in strong, lightweight, precision-formed front frame sections.

WIDE TRACK DESIGN

Wide front and rear track dimensions enhance Yukon's stability and ride quality.

SAFETY CAGE

Liberal use of high-strength steel reinforcements helps provide excellent occupant protection in impacts and rollovers.

TIRE PRESSURE MONITORING SYSTEM

Automatically alerts you via the Driver Information Centre when a tire requires inflation.

AUTOMATIC LIGHT CONTROL

Turns your exterior lighting system on and off automatically, as ambient lighting conditions require.

COIL-OVER-SHOCK FRONT SUSPENSION

Delivers linear ride and handling characteristics on all road surfaces (1500 models).

RACK-AND-PINION STEERING

Provides precise and responsive control and enhanced on-centre feel (1500 models).

STABILITRAK

Standard on all models. Helps reduce lateral skids and incorporates hardware and software to mitigate potential rollover situations. Includes full-function traction control.

DUAL-STAGE FRONTAL AIR BAGS

Deploy with reduced force in low-speed frontal collisions to help protect the driver and front passenger.**

PASSENGER SENSING SYSTEM

Automatically disables the passenger-side air bag, based on weight and pressure, if the seat is empty or occupied by a child or small adult.**

HEAD CURTAIN SIDE-IMPACT AIR BAGS

Roof-mounted air bags provide protection in side impacts. Large air bags on each side protect the first-and second-row occupants. Models equipped with third-row seats also feature additional side curtain air bags for the protection of third-row passengers. Driver and right front passenger seats are fitted with seat-mounted side-impact air bags for additional thorax and pelvic protection.**

FRONT SAFETY BELT PRE-TENSIONERS

Automatically pull the driver and outboard front passenger safety belts snug when a collision is detected, for improved protection.

SAFETY-FOCUSED FRONT SEATS

Include energy-absorbing pans between the frame and cushion and high-strength seatbacks that resist collapsing in rear impacts.

*Five-star rating is for driver and front-passenger seating positions in the frontal crash test and for the front and rear seating positions in the side-impact crash test. Models tested with standard side-impact head curtain air bags. U.S. government ratings are part of the National Highway Traffic Safety Administration's (NHTSA's) New Car Assessment Program (NCAP) (safercar.gov).

**A NOTE ON CHILD SAFETY: Always use safety belts and proper child restraints, even in vehicles equipped with air bags. Even with the Passenger Sensing System, children are safer when properly secured in a rear seat. Never place a rear-facing infant restraint in the front seat of any vehicle equipped with an active air bag. Refer to the vehicle Owner's Manual and child safety seat instructions for more information.



THE FINAL TOUCH.

With quality GMC Accessories, it's easy to take your new Yukon's style, comfort and capability to new heights. To ensure outstanding fit, finish and performance, all GMC Accessories are engineered to the same high standards as your Yukon. That's why they can be covered under the 3-year/60,000 km New Vehicle Limited Warranty.* When you purchase your new Yukon through GMAC, your GMC Accessories can also be included in your finance agreement. Ask your dealer for a complete listing of the GMC Accessories to help you make your Yukon unmistakably yours. Or visit gm.ca

AVAILABLE YUKON ACCESSORIES INCLUDE:

- 20" and 22" wheels
- Hitch-mounted ski carrier
- Hitch-mounted bike carrier
- Tail light guards
- Chrome recovery hooks
- Tubular running boards
- Chrome fuel door
- Front fascia extension
- Moulded hood protector
- Trailer hitch cover
- Moulded splash guards
- Side-window weather deflectors
- Hard cargo carrier
- Chrome grille
- DVD player-overhead portable.

* Whichever comes first, when permanently installed by the dealer at the time you purchased your new vehicle, or for the remainder of the New Vehicle Limited Warranty if installed after the time of your vehicle purchase, but no less than 12 months.



ACCESSORIES



Yukon is offered in a choice of attractive models. To help you find the one that's just right for you, some of the major features that differentiate one Yukon model from another are listed below.

YUKON SLE YUKON XL SLE

The following features are standard on SLE models:

- 320 hp 5.3L Vortec V8 engine
- GM Oil Life Monitoring System
- 6-speed automatic transmission with Tow/Haul mode and Grade Braking
- Autotrac transfer case (4x4 models)
- 4-wheel disc brakes with ABS
- StabiliTrak electronic stability control system with Proactive Roll Avoidance
- Traction control
- Rear locking differential
- Trailering Equipment Package
- 17" aluminum wheels
- Tire pressure monitoring system
- Heated, power exterior mirrors
- Black roof rack side rails
- Black assist steps
- Remote vehicle starter system
- Front 3-passenger 40/20/40 divided bench seat with power 6-way driver's seat adjuster
- 2nd-row, 3-passenger 60/40 divided bench seat with armrest and cupholders
- 3rd-row, 3-passenger 50/50 split bench
- Driver Information Centre
- Tri-zone manual climate controls
- Bluetooth mobile phone connectivity
- Dual frontal and side-impact head curtain air bags
- AM/FM stereo with MP3-compatible CD player, USB port, auxiliary input jack and 6 speakers
- XM Satellite Radio™†
- OnStar® and 1 year of the Safe & Sound Plan.

YUKON SLT YUKON XL SLT

SLT models include the equipment of SLE models plus the following features and upgrades:

- Fog lights
- Black roof rack cross bars
- Ultrasonic rear park assist
- Leather-appointed seating surfaces
- Front bucket seats with power 6-way driver's seat adjuster
- Centre floor console with storage and cupholders
- Power adjustable brake and accelerator pedals
- Tri-zone automatic climate controls
- Universal home remote transmitter
- Bose premium 9-speaker sound system with subwoofer
- Rear-seat audio controls and two headphone jacks
- OnStar with 1 year of the Directions & Connections Plan.

YUKON DENALI YUKON XL DENALI

Denali models include the equipment of SLT models plus the following features and upgrades:

- 403 hp FlexFuel 6.2L Vortec V8 engine with VVT
- Full-time all-wheel drive
- AutoRide suspension with automatic rear level control
- Trailering Heavy-Duty Cooling Package
- Denali-specific grille
- Power rear liftgate
- 20" aluminum wheels
- Power sunroof
- Colour-keyed assist steps with chrome inserts
- Body-colour heated power exterior rear-view mirrors with power folding feature, auto-dimming driver's side mirror, integrated turn signals and passenger-side reverse tilt
- Chrome roof rack side rails with body-coloured end caps
- Heated leather-wrapped steering wheel with wood trim
- Auto-dimming interior rear-view mirror
- Heated and cooled power 12-way front bucket seats with perforated leather appointments and driver's 2-position memory function
- 2nd-row, leather-appointed reclining bucket seats
- 3rd-row, 3-passenger 50/50 divided bench seat
- Power release fold-and-tumble 2nd-row seating
- Rear Entertainment System with DVD player, overhead display, 2 sets of wireless headphones, auxiliary audio/video input jacks and rear-seat audio controls
- Bose 10-speaker luxury sound system.

YUKON HYBRID SLT

The following features are standard on Yukon Hybrid SLT:

- 6.0L Vortec V8 LVC engine with VVT and Active Fuel Management
- 4-speed Electronically Variable Transmission
- 300-volt nickel-metal hydride Energy Storage System (ESS)
- Regenerative 4-wheel disc braking system with ABS
- Autotrac 4x4 system (on 4x4 models)
- StabiliTrak electronic stability control system with Proactive Roll Avoidance
- Traction control
- Rear locking differential
- Trailering Equipment Package
- 18" low-mass aluminum wheels
- Tire pressure monitoring system
- Body-colour heated power exterior rear-view mirrors with power folding feature, auto-dimming driver's side mirror, integrated turn signals and passenger-side reverse tilt
- Black assist steps
- Rearview Camera System
- Remote vehicle starter system
- Heated leather-appointed seating surfaces
- Bucket seats with power 6-way driver's seat adjuster
- 2nd-row, 3-passenger 60/40 divided bench seat with armrest and cupholders
- 3rd-row, 3-passenger 50/50 split bench
- Driver Information Centre
- Auto-dimming interior rear-view mirror
- Tri-zone manual climate controls
- Bluetooth mobile phone connectivity
- Dual frontal and side-impact head curtain air bags
- DVD-based Navigation System with voice recognition, AM/FM stereo with MP3-compatible CD player, USB port, auxiliary input jack and 6 speakers. Includes Hybrid power-flow display on navigation screen. Rearview Camera System display also appears on navigation screen
- XM Satellite Radio†
- OnStar and 1 year of the Directions & Connections Plan.

YUKON HYBRID DENALI

Yukon Hybrid Denali includes the equipment of Yukon Hybrid SLT plus the following features and upgrades:

- Denali-specific grille
- Power rear liftgate
- 22" aluminum wheels
- Power sunroof
- Colour-keyed assist steps with chrome inserts
- Chrome roof rack side rails with body-coloured end caps
- Leather-wrapped steering wheel with wood trim
- Heated and cooled power 12-way front bucket seats with perforated leather appointments and driver's 2-position memory function
- 2nd-row, leather-appointed 60/40 divided bench seat
- 3rd-row, 3-passenger 50/50 divided bench seat
- Bose 10-speaker luxury sound system.

† Available in 10 Canadian provinces and the 48 contiguous United States. Subscription sold separately after trial period.

ONSTAR

Does your vehicle have a help button? If you have OnStar,* you can get the help you need at the push of a button. If you're in a collision, you don't even need to ask for help – sensors around your vehicle can automatically alert an OnStar Advisor. If your vehicle's stolen, we can use GPS technology to help police find it. OnStar and 1 year of the Safe & Sound Plan is included on Yukon SLE models. SLT and Denali models feature OnStar and 1 year of the Directions & Connections Plan including Turn-by-Turn Navigation** – the simplest and smartest navigation system available. Just push the OnStar button and tell the Advisor where you want to go, and turn-by-turn directions are downloaded to your vehicle. No one offers more ways to help on the road. Learn more at onstar.ca



* OnStar services require vehicle electrical system (including battery), wireless service and GPS satellite signals to be available and operating for features to function properly. OnStar acts as a link to existing emergency service providers. Subscription Service Agreement required. Ability to locate stolen vehicles varies with conditions. Call 1-888-4ONSTAR (1-888-466-7827) or visit onstar.ca for OnStar's Terms and Conditions, Privacy Statement and details and system limitations.

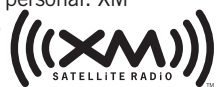
** Turn-by-Turn Navigation not available in certain areas. Visit onstar.ca for coverage map.

XM SATELLITE RADIO

Your listening preferences are very personal. XM Satellite Radio gives you access to the largest playlist on the planet and the most commercial-free music in digital-quality sound.

That's on top of news, talk, comedy and sports channels – including more than 1000 NHL games. It all adds up to 130 channels to choose from, coast to coast.† Why offer so much choice? XM Satellite Radio has to appeal to a wide range of tastes, with more than 9 million subscribers. And it's standard on all Yukon models. Ask your dealer for more information.

† Available in 10 Canadian provinces and the 48 contiguous United States. Subscription sold separately after trial period.



PEACE OF MIND, STANDARD WITH EVERY GMC MODEL

When you build them with quality, you can back them with confidence. That's why General Motors of Canada backs every GMC model with the best coverage in Canada. Program highlights include:

- 3-year/60,000 km New Vehicle Limited Warranty*
- 5-year/160,000 km Powertrain Component Limited Warranty, with \$0 deductible on repairs and the warranty is fully transferable at no charge*
- 5-year/160,000 km Courtesy Transportation*
- 5-year/160,000 km 24/7 Roadside Assistance*
- 6-year/160,000 km rust-through perforation coverage*
- 8-year/130,000 km coverage on catalytic converters and powertrain control modules (PCMs).*

*Whichever comes first. Conditions and limitations apply, see dealer for details.

OTHER OWNERSHIP PRIVILEGES AND PROGRAMS:†

- **GM Protection Plan (GMPP)** – the only extended service plan backed by the resources and commitment of General Motors. GMPP may be purchased at the time of sale or subsequently during the New Vehicle Limited Warranty period
- **GM Goodwrench Service** – with GM-certified technicians and GM-approved parts, nobody knows your GM vehicle better.

† Conditions and limitations apply.

TO HELP YOU PURCHASE A NEW VEHICLE:

- **GMAC Express Credit Application** – a convenient way to get pre-approved credit toward the purchase of your next GM vehicle
- **GMAC Purchase Financing** – on the spot financing at your GM dealership††
- **The GM Card** – eligible cardholders may be able to redeem up to \$3500 on GM Card® Earnings toward the Total Purchase Price on selected vehicles. For more information on The GM Card please call 1-800-461-3279.†

† Conditions and limitations apply. †† Subject to eligibility.

INFORMATION RESOURCES:

You can find more information about these programs from your GM dealer, or at these information centres:

- The GM website at gm.ca
- The GM Customer Communication Marketing Centre at **1-800-GM-DRIVE (1-800-463-7483 or 1-800-263-3830** for TDD users)
- For information about GMAC visit gmac.ca or call **1-800-616-4622**.

A WORD ABOUT THIS BROCHURE

Some of the equipment shown or described throughout this brochure may be available at extra cost. We have tried to make this brochure comprehensive and factual. We reserve the right, however, to make changes at any time, without notice, in prices, colours, materials, equipment, specifications, models and availability. Specifications, dimensions, measurements, ratings and other numbers in this brochure and other printed materials provided at the dealership or affixed to vehicles are approximates based upon design and engineering drawings and prototypes and laboratory tests. Your vehicle may differ due to variations in manufacture and equipment. Since some information may have been adapted since the time of the printing, please check with your GM dealer for complete details. General Motors of Canada Limited reserves the right to lengthen or shorten the model year for any product, for any reason, or to start and end model years at different times.

A WORD ABOUT ASSEMBLY

GM vehicles are equipped with engines and components produced and assembled by different operating units of General Motors, its subsidiaries and suppliers and these engines and components may change or be obtained from different sources from time to time. All such engines and components are approved for use in GM vehicles. Certain equipment ordered may be unavailable at the time of assembly and we suggest that you verify that your vehicle includes the equipment you ordered, or if there are changes, that they are acceptable to you.

TRADEMARKS

The marks appearing in this brochure including, but not limited to: General Motors, GM, the GM emblem, GMC, Denali, Yukon, Yukon XL, Z71 and their respective logos, emblems, slogans and vehicle model names and body designs; and other marks such as Active Fuel Management, Autotrac, AutoRide, Solar-Ray, StabiliTrak and Vortec are trademarks of General Motors and/or General Motors of Canada Limited, its subsidiaries, affiliates or licensors.

GMAC is a registered trademark of the General Motors Acceptance Corporation of Canada, Limited.

OnStar and the OnStar emblem are registered trademarks of the OnStar Corporation.

TheftLock is a registered trademark of Delphi Automotive Systems.

Radio Data System (RDS) is a registered trademark of the U.S. National Association of Broadcasters.

The XM name and related logos are trademarks of XM Canada, Canadian Satellite Radio Inc.

Apple and iPod are registered trademarks of Apple Computer, Inc., registered in the U.S. and other countries.

Bose and AudioPilot are registered trademarks of the Bose Corporation.

Bluetooth is a registered trademark of Bluetooth SIG Inc.

COPYRIGHT

©Copyright 2009 General Motors of Canada Limited. All Rights Reserved. All text, images, graphics, and other materials in this brochure are subject to the copyright and other intellectual property rights of General Motors and/or General Motors of Canada Limited. These materials may not be reproduced, distributed or modified without the express written permission of General Motors and/or General Motors of Canada Limited.



Printed in Canada, September 2009.

2010 GMC YUKON & YUKON XL STANDARD & OPTIONAL FEATURES

MODEL SELECTOR				
MODEL	DRIVE	STANDARD GVWR [†] kg (lb.)	MAX. PAYLOAD ^{††} kg (lb.)	MAX. GROSS TRAILER WEIGHT [†] kg (lb.)
YUKON	2WD 4x4	3221 (7100) 3311 (7300)	805 (1774) 773 (1705)	3810 (8400) 3720 (8200)
YUKON DENALI	AWD	3311 (7300)	730 (1610)	3674 (8100)
YUKON HYBRID	2WD 4x4	3221 (7100) 3311 (7300)	670 (1476) 623 (1373)	2812 (6200) 2722 (6000)
YUKON HYBRID DENALI	4x4	3402 (7500)	NA	2495 (5500)
YUKON XL 1500	2WD 4x4	3266 (7200) 3357 (7400)	689 (1519) 709 (1563)	3674 (8100) 3583 (7900)
YUKON XL DENALI 1500	AWD	3357 (7400)	653 (1440)	3583 (7900)
YUKON XL 2500	2WD 4x4	3901 (8600) 3901 (8600)	1102 (2429) 981 (2162)	4355 (9600) 4218 (9300)

[†] Gross Vehicle Weight Rating (GVWR) includes vehicle, passengers, equipment and cargo.

^{††} Payloads are approximate and will change with the addition of optional or aftermarket equipment. Consult your dealer or equipment supplier for details.

[‡] Trailer Weight (also called Trailer Towing Capacity) is the weight of a trailer, its load or contents plus any other weight added to the tow vehicle. Many trailer towing applications require additional optional equipment. See your dealer or refer to the vehicle Owner's Manual for details. For more information on trailer towing go to gm.ca.

SAFETY AND SECURITY	SLE	SLT	DENALI	HYBRID SLT	HYBRID DENALI
Air bags – dual-stage, driver and front-passenger, frontal with Passenger Sensing System and passenger-side air bag suppression system with status indicator in overhead console – except Yukon XL 2500	S	S	S	S	S
Air bags – single stage, driver and front passenger, frontal with on/off switch – Yukon XL 2500	S	S	–	–	–
Air bags – seat-mounted side-impact, driver and right front passenger for thorax and pelvic protection	S	S	S	S	S
Air bags – front-to-rear, head curtain side-impact with rollover sensor (includes 3rd-row when equipped with 3rd-row seating)	S	S	S	S	S
Door locks – power, programmable with lock-out protection	S	S	S	S	S
Headlights – dual halogen with automatic light control and flash-to-pass features	S	S	S	S	S
Keyless entry system – remote, includes 2 extended range transmitters	S	S	S	S	S
OnStar In-Vehicle Communications and Assistance Service – includes one-year Safe & Sound Plan* – includes one-year Directions & Connections Plan* with Turn-by-Turn Navigation ^{‡‡}	S	–	–	–	–
Safety restraints – LATCH (Lower Anchors and top Tethers for Children)	S	S	S	S	S
Safety restraints – 3-point belts for all seating positions (when equipped with front bucket seats; lap belt for centre position with front split-bench seat)	S	S	S	S	S
StabiliTrak – electronic stability control system with Proactive Roll Avoidance	S	S	S	S	S
Theft-deterrent system – electronic immobilizer and vehicle content theft alarm	S	S	S	S	S
Traction control – electronic, full-function, all-speed	S	S	S	S	S
Ultrasonic rear parking assist – rear obstacle detection system with audible warning	0 ¹	S	S	S	S

MECHANICAL	SLE	SLT	DENALI	HYBRID SLT	HYBRID DENALI
Air cleaner – high capacity	S	S	S	–	–
Brakes – power-assisted, 4-wheel vented disc with 4-wheel anti-lock braking system (ABS) and dynamic rear proportioning (DRP)	S	S	S	S	S
Brakes – regenerative braking system, recharges 300-volt Hybrid battery pack	–	–	–	S	S
Engine – FlexFuel Vortec 5.3L SFI V8 with Active Fuel Management and Variable Valve Timing, capable of running on up to 85% ethanol (E85) – Horsepower – 320 @ 5400 rpm; Torque – 335 lb.-ft. @4000 rpm	S	S	–	–	–
Engine – FlexFuel Vortec 6.2L SFI V8 with Variable Valve Timing (VVT), capable of running on up to 85% ethanol (E85) – Horsepower – 403 @ 5700 rpm; Torque – 417 lb.-ft. @4300 rpm	–	–	S	–	–
Engine – FlexFuel Vortec 6.0L SFI V8 with Variable Valve Timing (VVT), capable of running on up to 85% ethanol (E85) – Horsepower – 352 @ 5400 rpm; Torque – 382 lb.-ft. @4200 rpm – Yukon XL 2500	S	S	–	–	–
Engine – FlexFuel Vortec 6.0L LIVC V8 with Variable Valve Timing (VVT) and Active Fuel Management, Hybrid electric propulsion system with 300-volt Hybrid battery pack and high voltage management module – Horsepower – 332 @ 5100 rpm; Torque – 367 lb.-ft. @ 4100 rpm	–	–	–	S	S

MECHANICAL (CONTINUED)	SLE	SLT	DENALI	HYBRID SLT	HYBRID DENALI
Engine – block heater	0	0	0	0	0
Locking differential – rear	S	S	S	S	S
Steering – power, rack-and-pinion – Yukon and Yukon XL 1500	S	S	S	–	–
Steering – electric power, rack-and-pinion	–	–	–	S	S
Steering – power, recirculating ball – Yukon XL 2500	S	S	–	–	–
Suspension – Premium smooth ride – Yukon and Yukon XL 1500	S	S	–	S	–
Suspension – AutoRide, road-sensing, electronically controlled shock absorbers with air-assisted automatic rear level control	–	0 ²	S	–	–
Suspension – Magnetic Ride Control	–	–	–	–	S
Suspension – heavy-duty handling and trailering with front independent torsion bars and rear multi-stage leaf springs – Yukon XL 2500	S	S	–	–	–
Trailer electric brake controller – standard on Yukon XL 2500 ³	0	0	0	–	–
Trailer Equipment – heavy-duty, includes weight-distributing hitch platform with 51 mm (2 in.) hitch receiver, 7-pin sealed wiring connector and provision for an aftermarket trailer brake controller	S	S	S	S	S
Transfer case – 2-speed, Autotrac with electronic rotary control – Yukon Hybrid, Yukon Denali Hybrid and Yukon XL 2500 4x4 models	S	S	–	S	S
Transfer case – single-speed, Autotrac with electronic rotary control – Yukon 4x4 and Yukon XL 1500 4x4 models ⁴	S	S	–	–	–
Transfer case – AWD, full-time electronic automatic system	–	–	S	–	–
Transmission – 6-speed electronically controlled automatic with two overdrive gears, Tow/Haul mode and driver shift control (model 6L80 used on 1500 models; heavy-duty model 6L90 used on Yukon XL 2500)	S	S	S	–	–
Transmission – 4-speed automatic integrated with Hybrid variable electric propulsion system	–	–	–	S	S
Transmission/Hybrid electronics cooler	–	–	–	S	S
Snowplow Prep Package – Yukon XL 2500 4x4 models only	0	0	–	–	–
Vehicle starter system – remote	S	S	S	S	S
Trailering Heavy-Duty Cooling Package – includes external transmission and engine oil coolers (standard on Yukon XL 2500 models) ³	0	0	S	–	–
Z71 Off-Road Equipment – includes P265/70R17 On-Off Road tires and skid plates protecting the oil pan, front differential case and transfer case (Not available on Yukon XL 2500) ⁵	–	0	–	–	–

EXTERIOR	SLE	SLT	DENALI	HYBRID SLT	HYBRID DENALI
Assist steps – black	S	S	–	S	–
Assist steps – colour-keyed with chrome insert	–	–	S	–	S
Assist steps – power retractable	–	–	0	–	–
Bumpers – front and rear, colour-keyed fascia	S	S	S	–	S
Bumpers – front and rear, colour-keyed fascia with unique Hybrid aero design	–	–	–	S	–
Door handles – colour-keyed	S	S	–	S	–
Door handles – chrome	–	–	S	–	S
Fog lights – halogen	–	S	S	–	S
Glass – Solar-Ray® tinted, deep-tinted on all windows behind front doors	S	S	S	S	S
Grille – chrome surround	S	S	S	S	S
Grille – chrome mesh insert	–	–	S	–	S
Liftgate – includes liftglass	S	S	S	–	S
Liftgate – power, electric open and close with keyless remote control	–	0	S	–	S
Liftgate – low mass aluminum with fixed window glass	–	–	–	S	–
Mirrors – manual foldaway power adjustable, heated and colour-keyed	S	S	–	–	–
Mirrors – power foldaway, full-feature power adjustable, heated, driver-side auto-dimming feature, side-entry illumination and integrated turn signals (colour-keyed)	–	0	S	S	S
Mirrors – deluxe wide load, manual extending and folding, heated, integrated turn signals and lower convex spotter (Yukon XL 2500)	0	0	–	–	–
Mouldings – bodyside, colour-keyed	S	S	–	S	–
Mouldings – bodyside, colour-keyed with chrome insert	–	–	S	–	S
Rearview Camera System – reverse assist for parking or trailer towing (includes interior rear-view mirror with display or displayed on navigation system screen with up-level sound system and DVD-based navigation)	–	0	0	S	S
Recovery hooks – two, front – 4x4 models ⁶	S	S	S	–	–
Roof rack – side rails	S	S	S	–	S
Roof rack – cross bars	0	S	S	–	S
Side blind zone alert	–	–	0	–	–

EXTERIOR (CONTINUED)	SLE	SLT	DENALI	HYBRID SLT	HYBRID DENALI
Skid plates – includes aluminum front underbody shield from front fascia to first cross member, plus oil pan, front differential and transfer case shields (included with Z71 Off-Road Equipment)	0	0	–	–	–
Sunroof – power, sliding glass panel and tilt with express-open and close	–	0	S	0	S
Tire inflator kit	–	–	–	S	S
Tires – P265/70R17 all-season** – Yukon and Yukon XL 1500	S	S	–	–	–
Tires – P265/65R18 all-season**	–	–	–	S	–
Tires – P285/45R22 all-season**	–	–	–	–	S
Tires – P275/55R20 all-season** – Yukon and Yukon XL 1500	–	0	S	–	–
Tires – P265/70R17 On-Off road – Yukon and Yukon XL 1500	–	0	–	–	–
Tires – LT265/70R17 All-Terrain – Yukon XL 2500	S	S	–	–	–
Wheels – 17" x 7.5" aluminum, Sport (N88) – Yukon and Yukon XL 1500	S	S	–	–	–
Wheels – 18" x 8.0" low mass aluminum (P71)	–	–	–	S	–
Wheels – 22" x 9.0" chromed aluminum (RVA)	–	–	–	–	S
Wheels – 17" x 7.5" bright machined aluminum with 8-lug design, centre caps and 17" full-size spare – Yukon XL 2500 (P25)	S	S	–	–	–
Wheels – full-size 17" spare under rear frame, lockable – Yukon and Yukon XL 1500	S	S	S	–	–
Wheel and Tire Package – includes 20" x 8.5" aluminum wheels and P275/55R20 all-season** tires – polished on Yukon and Yukon XL 1500 (RDP) / chromed on Yukon Denali and Yukon XL Denali (P41)	–	0	S	–	–
Wheel and Tire Package – includes 20" x 8.5" chrome-clad aluminum wheels and P275/55R20 all-season** tires – Yukon and Yukon XL 1500 (S86)	–	0	–	–	–
Windshield wipers – variable delay (intermittent), flat-blade, with wet-arm washers	S	S	S	S	S
Wiper/washer – rear-window with fixed delay	S	S	S	S	S
Driver Convenience Package (PDE) – includes ultrasonic rear parking assist and power adjustable pedals	0	S	S	S	S
White Diamond Package – polished exhaust tip – Yukon and Yukon XL 1500	–	0 ⁷	–	–	–

INTERIOR	SLE	SLT	DENALI	HYBRID SLT	HYBRID DENALI
Air conditioning – tri-zone, manual climate controls with individual settings for driver, front and rear passengers ⁸	S	–	–	–	–
Air conditioning – tri-zone, automatic climate controls with individual settings for driver, front and rear passengers ⁸	–	S	S	S	S
Cargo compartment mat – rear (Yukon XL)	–	–	S	–	–
Console – centre floor, includes storage bin, dual cupholders in front and rear, 2 power outlets, rear-seat audio and HVAC controls	–	S	S	S	S
Cruise control – electronic with resume, coast and decelerate/accelerate features	S	S	S	S	S
Defogger – electric, rear-window	S	S	S	S	S
Floor covering – colour-keyed carpet with 1st- and 2nd-row removable floor mats	S	S	S	S	S
Heater – rear, auxiliary with passenger heating ducts	S	S	S	S	S
Instrumentation – full analogue gauge cluster (includes speedometer, tachometer, odometer, trip odometer, fuel level, voltmeter (replaced with ECO gauge in Hybrid), engine temperature and oil pressure)	S	S	S	S	S
Instrumentation – Driver Information Centre, comprehensive multi-language system that displays numerous vehicle functions with both visual and audible reminders/warnings. Enables programmable personalization of features such as automatic locking/unlocking and exit lighting. Includes 8-point compass and exterior temperature display	S	S	S	S	S
Instrumentation – tire pressure monitoring system (except spare)	S	S	S	S	S
Instrumentation – GM Oil Life Monitoring System	S	S	S	S	S
Lights – overhead, reading and cargo with illuminated entry feature	S	S	S	S	S
Mirror – rear-view, auto-dimming	–	0	S	S	S
Pedals – power adjustable brake and accelerator	0 ⁹	S	S	S	S
Power outlets – auxiliary 12-volt (2 on instrument panel, 1 in cargo area and 2 in centre console when equipped with bucket seats)	S	S	S	S	S
Power outlet – auxiliary 115-volt 3-prong household type, located in rear	–	–	–	S	S

INTERIOR (CONTINUED)	SLE	SLT	DENALI	HYBRID SLT	HYBRID DENALI
Steering column – tilt adjustable	S	S	S	S	S
Steering wheel – leather-wrapped with sound system and cruise controls	S	S	S	S	S
Steering wheel – heated with wood trim	–	–	S	–	–
Steering wheel – includes wood trim	–	–	–	–	S
Sunshades – LH and RH, padded, colour-keyed, extendable with illuminated visor mirrors	S	S	S	S	S
Universal home remote – 3-channel transmitter	–	S	S	S	S
Windows – power, includes driver express-down and passenger lock-out features	S	S	S	S	S


SEATS	SLE	SLT	DENALI	HYBRID SLT	HYBRID DENALI
Premium cloth 40/20/40 split-bench reclining front seat with power 6-way driver seat adjuster and manual lumbar adjuster, centre fold-down armrest with lockable storage compartment in centre seat cushion	S	–	–	–	–
Leather-appointed reclining front bucket seats with power 6-way driver and front-passenger seat adjusters with manual lumbar adjusters and centre floor console	–	S	–	S ¹⁰	–
Premium cloth reclining front bucket seats with power 6-way driver and front-passenger seat adjusters with manual lumbar adjusters and centre floor console	–	0	–	–	–
Leather-appointed full-feature power reclining front bucket seats with driver and front-passenger power 10-way seat adjusters (including power 2-way lumbar adjusters), heated, driver's 2-position memory controls and centre floor console	–	0	–	–	–
Perforated leather-appointed full-feature power reclining front bucket seats with driver and front-passenger power 12-way seat adjusters (including power 4-way lumbar adjusters), heated and cooled seats, driver's 2-position memory controls and centre floor console	–	–	S	–	S
2nd-row 3-passenger 60/40 split-folding bench with centre armrest	S	S	0	S	S
2nd-row reclining bucket seats	–	0 ¹¹	S	–	–
2nd-row heated (outboard seating positions)	–	0 ¹¹	S	–	S
2nd-row power release fold-and-tumble	–	0	S	–	–
3rd-row 3-passenger 50/50 split-bench, removable ¹²	S	S	S	S	S

ENTERTAINMENT SYSTEMS	SLE	SLT	DENALI	HYBRID SLT	HYBRID DENALI
AM/FM stereo – with CD player, MP3 playback compatible, USB port, auxiliary audio input jack, seek-scan, auto tone control, speed-compensated volume, TheftLock®, Radio Data System® (RDS) and digital clock	S	S	–	–	–
AM/FM stereo – with CD/DVD player upper slot and CD player lower slot, MP3 playback compatible (both), USB port, auxiliary audio input jack, seek-scan, auto tone control, speed-compensated volume, TheftLock®, Radio Data System (RDS) and digital clock	–	0	S	–	–
XM Satellite Radio ¹	S	S	S	S	S
Bluetooth – utilizes vehicle sound system, microphone, voice recognition and controls with Bluetooth-enabled cell phones	S	S	S	S	S

S – Standard. 0 – Optional individually or in combination with other optional equipment. Note: The trim features indicated reflect only a portion of the total content of each trim level. See your sales consultant for complete listings, current availability and compatibility.

- Available with Driver Convenience Package.
- Not available on Yukon XL 2500 models.
- Requires Trailering Heavy-Duty Cooling Package.
- 2-speed Autotrac transfer case is available.
- Includes 2-speed Autotrac transfer case on Yukon 4x4 and Yukon XL 1500 4x4 models.
- Standard on all 2500 models.
- Requires White Diamond Tricoat (98), available at extra cost.
- Rear-seat climate controls are included, located in the overhead console on SLE models and rear of the centre floor console on SLT and Denali models.
- Requires available Drivers Convenience Package.
- Heated front bucket seats on Hybrid.
- Requires leather-appointed full-feature front bucket seats.
- Third row is vinyl when leather-appointed seating is specified.

* OnStar services require vehicle electrical system (including battery), wireless service and GPS satellite signals to be available and operating for features to function properly. OnStar acts as a link to existing emergency service providers. Subscription Service Agreement required. Call 1-888-4-ONSTAR (1-888-466-7827) or visit onstar.ca for OnStar's Terms and Conditions, Privacy Statement and details and system limitations.

** All-season tires may not satisfy winter tire requirements in all regions of the country. Tires specifically designed for severe winter conditions and marked with the "winter tire" symbol  may be required during certain months or in certain regions. Contact your Provincial, Municipal or local road authority for information regarding which tires are required in your particular area.

‡‡ Turn-by-Turn Navigation not available in certain areas. Availability impacted by some geographical/cellular limitations, advisor assisted-routing available. Visit onstar.ca for coverage map.

† Available in all 10 Canadian provinces and the 48 contiguous United States. Subscription sold separately after trial period.

STANDARD & OPTIONAL FEATURES (CONTINUED)

ENTERTAINMENT SYSTEMS (CONTINUED)	SLE	SLT	DENALI	HYBRID SLT	HYBRID DENALI
6-speaker sound system	S	–	–	–	–
Bose 9-speaker premium sound system with subwoofer	–	S	–	S	–
Bose 10-speaker Centre Channel sound system with subwoofer	–	0	S	0	S
2nd-row audio controls and earphone jacks	–	S	S	S	S
DVD entertainment system – 2nd-row, overhead fold-down 203 mm (8-in.) LCD colour monitor, DVD player, video camera/game input (RCA) jacks, 2 wireless two-channel headphones and remote control ¹³	–	0	S	–	–
3rd-row DVD entertainment system – available on Yukon XL models only, requires DVD entertainment system	–	0	0	–	–
Integrated DVD navigation system – multimedia with navigation and voice recognition, includes Rearview Camera System, AM/FM stereo with CD player, MP3 playback compatible, auxiliary audio input jack, seek, scan, digital clock, auto tone control, speed-compensated volume, TheftLock and Radio Data System (RDS) ^{13,14}	–	0	0	S ¹⁵	S ¹⁵

YUKON AND YUKON XL PREFERRED EQUIPMENT GROUPS

Yukon and Yukon XL offer the following popular upgrades to the SLT for even more convenience and comfort.

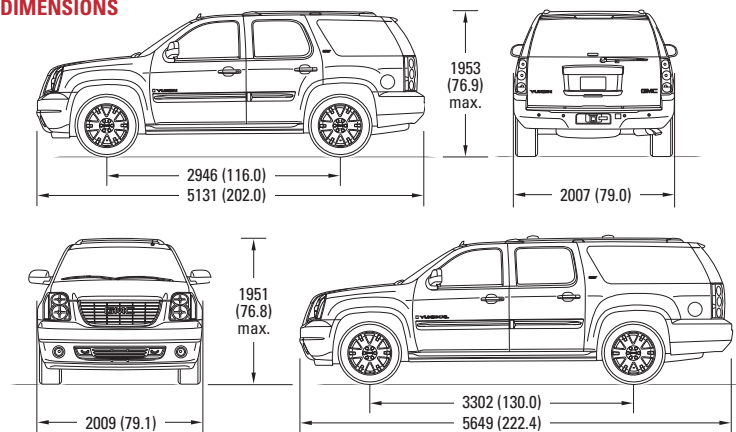
Yukon and Yukon XL PEG 1SD adds the following options to the SLT: full-feature leather-appointed, heated front bucket seats with power 10-way seat adjusters (including power 2-way lumbar adjusters) – 2nd-row heated (outboard seating positions) – auto-dimming interior rear-view mirror – exterior rear-view mirrors include power foldaway, power adjustable, heated, driver-side auto-dimming feature, side-entry illumination and integrated turn signals

¹³ – DVD entertainment system and Integrated DVD navigation system are available as a package.

¹⁴ – At time of print, detailed map coverage is available for most major urban areas of the United States and for certain metropolitan areas of Canada (Vancouver, Calgary, Edmonton, Winnipeg, Windsor, London, Toronto, Ottawa, Montreal, Quebec City and Halifax). Coverage is significantly limited outside these areas.

¹⁵ – Hybrid includes power flow display on DVD navigation screen.

DIMENSIONS



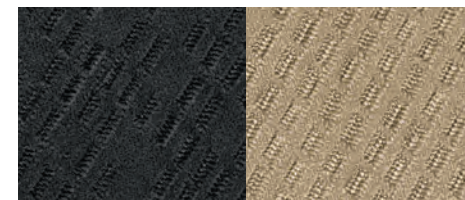
CARGO AREA DIMENSIONS, mm (in.)	YUKON	YUKON XL
Cargo floor height to ground	805 (31.7)	828 (32.6)
Maximum cargo height	1059 (41.7)	1052 (41.4)
Cargo floor width between wheel housings	1247 (49.1)	1247 (49.1)
Load-floor length to front seat	2068 (81.4)	2586 (101.8)
Load-floor length to 2nd-row seat	1255 (49.4)	1768 (69.6)
Load-floor length to 3rd-row seat	386 (15.2)	904 (35.6)

VOLUME, L (cu.ft.)

With all seats in position	479 (16.9)	1297 (45.8)
With 3rd-row seat removed or folded	1708 (60.3)	2549 (90)
With 2nd-row seat folded and 3rd-row seat removed	3084 (108.9)	3891 (137.4)

INTERIOR FABRIC COLOURS

YUKON/YUKON XL – PREMIUM CLOTH – standard on SLE models



19 – Ebony

33 – Light Tan

YUKON/YUKON XL – LEATHER-APPOINTED SEATING – standard on SLT models

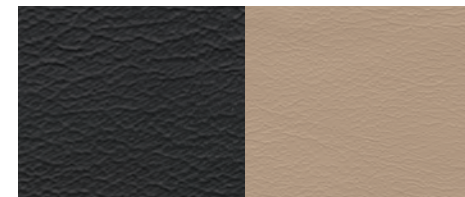


19 – Ebony

33 – Light Tan

83 – Light Titanium

YUKON/YUKON XL DENALI – NUANCE LEATHER-APPOINTED SEATING



19 – Ebony

39 – Cocoa/Light Cashmere

EXTERIOR/INTERIOR COLOUR COMPATIBILITY

EXTERIOR	INTERIOR	19 – Ebony	33 – Light Tan	83 – Light Titanium SLT	39 – Light Cashmere Denali
41 – Onyx Black	MODEL	SLE/SLT/Denali	SLE/SLT		
46 – Stealth Gray Metallic ¹		•	•	•	•
50 – Summit White		•	•	•	•
51 – Gold Mist Metallic		•	•	•	•
80 – Red Jewel Tintcoat*		•	•	•	•
98 – White Diamond Tricoat* ²		•	•	•	•
GGW – Storm Gray Metallic		•	•	•	•
GGZ – Pure Silver Metallic		•	•	•	•

* Premium colour, available at extra cost.

¹ Not available on Denali models.

² Requires available White Diamond Package and SLT with PEG 1SD. Not available with SLE.

EXTERIOR COLOURS



41 – Onyx Black



46 – Stealth Gray Metallic¹



50 – Summit White



51 – Gold Mist Metallic



80 – Red Jewel Tintcoat*



98 – White Diamond Tricoat*²



GGW – Storm Gray Metallic



GGZ – Pure Silver Metallic

The exterior colours in this brochure are as close to the actual vehicle production colours as the printing process allows. For more accurate colour samples, ask your sales consultant to see the dealer showroom vehicle colour display.

WHEELS



17" x 7.5" Sport aluminum, standard on 1500 SLE and SLT models (N88)



20" x 8.5" Chrome-clad aluminum, available on 1500 SLT models (S86)



20" x 8.5" Polished aluminum, available on 1500 SLT models (RDP)



17" x 7.5" Bright machined aluminum, standard on all 2500 models (P25)



20" x 8.5" Chromed aluminum, standard on Denali models (P41)



18" x 8.0" Low mass aluminum, standard on Hybrid SLT models (P71)



22" x 9.0" Chromed aluminum, standard on Hybrid Denali models (RVA)

GMC

WE'LL TAKE YOU EXACTLY WHERE YOU WANT TO GO.

You demand more from a vehicle than ever before. Exactly the same can be said of GMC. For starters, you're looking for greener driving choices – GMC offers a range of vehicles that incorporate technology that helps reduce fuel consumption and emissions, like Active Fuel Management®, Variable Valve Timing and Direct Injection. Down the road, there are plug-in electric vehicles and other emerging technologies that point the way to a future of zero-emissions driving.

At GMC, we take pride in more than the quality of our vehicles. We are also proud to be the Official Vehicle Supplier of the Vancouver 2010 Olympic and Paralympic Winter Games. To help create a more sustainable 2010 Winter Games, we are committed to providing the most environmentally friendly fleet of all time through the supply of hybrid, alternate fuel, and other advanced green technology vehicles. The Drive is On.

For more information about GMC visit gmc.gm.ca



Mixed Sources

Product group from well-managed forests, controlled sources and recycled wood or fiber
www.fsc.org Cert no. SW-COC-002429
© 1996 Forest Stewardship Council



GMC
OFFICIAL
VEHICLE™

*GMC is a brand of General Motors of Canada, the Official Vehicle Partner of the Vancouver 2010 Olympic and Paralympic Winter Games.™© 2008, VANOC. Used under License.