

2007 AZERA



 **HYUNDAI**

2007 AZERA | INTRODUCTION

PREPARE TO ADJUST
YOUR PERCEPTIONS.

The 2007 Azera is a refreshingly modern version of the premium sedan. With its class-leading engine, and more interior volume and standard safety technologies than any other car in its class, Azera is catching the eye of competitors and critics. And drivers are noticing Azera, too: it won the AutoPacific® Best in Class Vehicle Satisfaction, Large Luxury Car Award,* which means this elegant flagship is one indulgence you can feel good about.

*2006 model. ©2006 AutoPacific, Inc.
Vehicle Satisfaction Award

LIMITED IN EBONY BLACK

 **HYUNDAI**

While the Azera's interior is designed to bring you serenity, the engine is engineered to deliver anything but. This clean, powerful 3.8-liter V6 is making an impression: "Perhaps the best characteristic of the Azera... is its engine." †The all-aluminum, 263-hp engine with Continuously Variable Valve Timing uses a variable cold air intake system to give you exceptionally responsive power and efficiency. Add all this to its aerodynamic body, and exhilaration may become your new favorite way to relax.

2007 AZERA | PERFORMANCE

- **3.8-LITER, 24-VALVE V6 ENGINE**
- **263-HORSEPOWER AND 257 LB.-FT. OF TORQUE**
- **5-SPEED AUTOMATIC TRANSMISSION WITH SHIFTRONIC®**
- **POWER RACK-AND-PINION STEERING**
- **4-WHEEL DISC BRAKES WITH ABS**
- **17-INCH EUROFLANGE ALLOY WHEELS WITH P235/55R TIRES ON LIMITED**
- **.29 COEFFICIENT OF DRAG**

†Road & Track, January, 2006



LIMITED IN SAGE GREEN

 **HYUNDAI**



LIMITED IN BEIGE LEATHER



LIMITED IN BEIGE LEATHER

2007 AZERA | INTERIOR

Not only does Azera's expansive interior boast the largest total volume in its class, it's brimming with considerate features. Personalize your climate with the dual front automatic temperature control and sink into the roomy 8-way power driver seat while an elegant interior surrounds you. The available integrated memory system thoughtfully moves your seat into the most comfortable pre-selected position, and suddenly, red lights don't seem quite so bad.

- **MORE TOTAL INTERIOR VOLUME THAN BMW 760i OR MERCEDES S-CLASS SEDANS**
- **LEATHER-TRIMMED INTERIOR ON LIMITED**
- **ELECTROLUMINESCENT GAUGES ON LIMITED**
- **4-WAY POWER PASSENGER SEAT**
- **TILT-AND-TELESCOPIC STEERING WHEEL**
- **STEERING-WHEEL-MOUNTED AUDIO AND CRUISE CONTROLS**
- **POWER REAR SUNSHADE ON LIMITED**

2007 AZERA | SAFETY

The Azera raises the bar—again—delivering an unsurpassed combination of standard safety technologies in its class. At Hyundai, we firmly believe that safety should not be a luxury. As a result of this unwavering commitment to safety for everyone, every 2007 Hyundai has been engineered with industry-leading safety features. So you can add peace of mind to Azera's long list of comforts.

LIMITED IN BRIGHT SILVER

Active Head Restraints

Designed to further protect the front occupants in case of a rear collision, the active front head restraints help prevent whiplash by reducing the space between your head and the head restraint.



Electronic Stability Control

ESC¹ with Traction Control is an active safety system that helps keep the vehicle on its intended path by automatically applying the brakes to individual wheels and adjusting throttle input as required.

¹Electronic Stability Control (ESC) with Traction Control System (TCS) cannot control your vehicle's stability under all driving situations. ESC with TCS is not a substitute for safe driving practices. No system, no matter how advanced, can overcome physics or correct poor driving. The driver is always responsible for controlling the vehicle, and must use caution to avoid loss of control in all driving conditions. Speed, road conditions and driver steering input will affect whether ESC with TCS can help prevent loss of control. See Owner's Manual for details.



Structural Integrity

Azera received the Insurance Institute for Highway Safety's top rating for offset frontal impacts*, due in part to its reinforced unibody construction. Intelligently engineered to absorb collision energy, its high-tensile steel provides solid structural integrity; front and rear crumple zones, bodyside reinforcements and hood buckling creases help protect you in an impact from any direction.

*IIHS, March, 2006. 2006 model tested.





2007 AZERA | SAFETY

Eight Airbags

Azera's standard safety technologies—unsurpassed in its class—include a comprehensive Supplemental Restraint System with advanced dual front airbags¹ and the Occupant Classification System, front side-impact airbags and rear side-impact airbags and side-curtain airbags.

¹The Supplemental Restraint System (SRS) is designed to work with the 3-point seatbelt system. The SRS deploys in certain frontal and/or side-impact conditions where significant injury is likely. The SRS is not a substitute for seatbelts, which should be worn at all times. Children under the age of 13 should be restrained securely in the rear seat. NEVER place a rear-facing child seat in the front seat of a vehicle that has a passenger-side airbag.



Seatbelt Pretensioners

Front seatbelt pretensioners tighten the safety belts during certain frontal impacts, helping reduce the occupants' forward movement. The force limiters help manage the belt's load across the torso and hips.



Anti-lock Braking System

The 4-wheel disc brakes are equipped with an Anti-lock Braking System with Brake Assist and Electronic Brake-force Distribution to help maintain steering control in emergency braking situations.

Energy-absorbing Steering Column

This important safety feature is standard on all Azeras. An NHTSA report* reveals that it is second only to the seatbelt system as an effective safety device when it comes to protecting the driver in a frontal collision.



Side Marker Mirrors

When it comes to being stylish and courteous, we've thought of every detail. You'll be easier to spot when changing lanes with the Limited's power-folding side mirrors with turn signal indicators.*



*From NHTSA's report, "Lives Saved by Federal Motor Vehicle Safety Standards and Other Vehicle Safety Technologies 1960-2002," October 2004.

* Available as part of the Ultimate Package





LIMITED IN GOLDEN BEIGE

2007 AZERA | STYLING

When we set out to design the Hyundai flagship, our engineers started with an entirely new idea of what a full-size sedan should be. This approach may be why everything about the Azera feels fresh and modern. Its powerful presence and elegant lines are made even more dramatic by alloy wheels and a chrome-tipped dual exhaust, while chrome accents set off its sophisticated color palette. Its good looks stand out even in the most beautiful settings.

- **SOPHISTICATED CHARACTER LINES**
- **LED TAIL LIGHTS**
- **CHROME-TIPPED DUAL EXHAUST**
- **THREE-BEAM JEWELLED PROJECTOR HEADLIGHTS**
- **INTEGRATED FRONT FOG LIGHTS**
- **SPORTY 16-INCH, 5-SPOKE ALLOY WHEELS ON SE**
- **ELEGANT 17-INCH, 10-SPOKE EUROFLANGE ALLOY WHEELS ON LIMITED**





LIMITED IN BRIGHT SILVER

2007 AZERA | FEATURES

- ELECTROCHROMIC AUTO-DIMMING REARVIEW MIRROR WITH COMPASS AND HOMELINK®
- DUAL HEATED POWER SIDE MIRRORS
- REMOTE KEYLESS ENTRY SYSTEM
- ANTI-THEFT SYSTEM WITH ENGINE IMMOBILIZER
- MULTI-FUNCTION TRIP COMPUTER
- RAIN-SENSING WINDSHIELD WIPERS*

*Available as part of the Ultimate Package



Infinity Audio

The available 315-watt Infinity® audio system with in-dash 6-disc CD changer, 7-channel digital amplifier and 10 speakers can take your ears to an all-new level of sound. Speed-sensing volume control is an intuitive extra touch.



HomeLink

The electrochromic auto-dimming rearview mirror features a built-in HomeLink® transceiver, which allows you to control your garage door, home security system and more.* The mirror also includes a compass to keep you heading in the right direction.

Comfort

Go ahead: make yourself comfortable. With the Limited's graciously leather-trimmed and versatile 8-way powerdriver seat, adjustable lumbar support and tilting headrest, you're well-positioned for a great drive.



*Additional equipment may be required from system manufacturer. HomeLink is a registered trademark of Johnson Controls, Inc.

Day or night. Across time zones or just across town. The Azera is loaded with the extras that make any trip a pleasure trip. You'll be able to monitor your mileage and distance-to-empty with the multi-function trip computer. Plus a windshield wiper de-icer, dual heated power side mirrors and rain-sensing windshield wipers make driving more comfortable, safe and convenient in any weather.



AMERICA'S BEST WARRANTY™

The best. We can say it because it's true. Hyundai is leading the way with important standard safety technologies, while continuing to raise the bar for comfort and refinement. And the quality of every vehicle is backed by America's Best Warranty*—evidence of our steadfast commitment to building only the highest-quality automobiles. So no matter which Hyundai you choose, you can get out there and drive your way.



2007 AZERA | WARRANTY

**10-YEAR/100,000-MILE
POWERTRAIN PROTECTION**

**5-YEAR/60,000-MILE
BUMPER-TO-BUMPER
COVERAGE**

**7-YEAR/UNLIMITED MILES
ANTI-PERFORATION
WARRANTY**

**5-YEAR/UNLIMITED MILES
24-HOUR ROADSIDE
ASSISTANCE**

*See dealer for LIMITED WARRANTY details.





2007 AZERA SE

STANDARD FEATURES INCLUDE:

- 3.8-LITER, DOHC V6 ENGINE WITH CVVT
- 5-SPEED AUTOMATIC TRANSMISSION WITH SHIFTRONIC®
- ELECTRONIC STABILITY CONTROL (ESC) WITH TRACTION CONTROL SYSTEM (TCS)
- ANTI-LOCK BRAKING SYSTEM (ABS) WITH BRAKE ASSIST AND ELECTRONIC BRAKE-FORCE DISTRIBUTION (EBD)
- 16-INCH, 5-SPOKE ALLOY WHEELS WITH P225/60R TIRES
- ADVANCED DUAL FRONT AIRBAGS WITH OCCUPANT CLASSIFICATION SYSTEM (OCS)
- FRONT AND REAR SIDE-IMPACT AIRBAGS
- FRONT AND REAR SIDE-CURTAIN AIRBAGS
- ACTIVE FRONT HEAD RESTRAINTS
- FRONT FOG LIGHTS
- LED TAIL LIGHTS
- DUAL FOLDING, HEATED, POWER SIDE MIRRORS
- WINDSHIELD WIPER DE-ICER
- PREMIUM CLOTH SEATS
- 8-WAY POWER DRIVER SEAT
- 4-WAY POWER PASSENGER SEAT

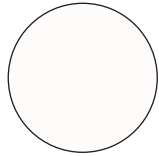
- 60/40 SPLIT FOLD-DOWN REAR SEATBACK
- DUAL FRONT AUTOMATIC TEMPERATURE CONTROL
- LEATHER-WRAPPED STEERING WHEEL AND SHIFT KNOB
- 172-WATT AM/FM/CD/MP3 SIX-SPEAKER AUDIO SYSTEM
- STEERING-WHEEL-MOUNTED AUDIO CONTROLS
- ELECTROCHROMIC AUTO-DIMMING REARVIEW MIRROR WITH COMPASS
- HOMELINK® INTEGRATED TRANSCEIVER
- MULTI-FUNCTION TRIP COMPUTER
- TILT-AND-TELESCOPIC STEERING WHEEL
- WOODGRAIN OR METALGRAIN ACCENT
- STEERING-WHEEL-MOUNTED CRUISE CONTROL
- FRONT POWER WINDOWS WITH AUTO-DOWN/UP AND PINCH PROTECTION
- AUTOMATIC HEADLIGHTS
- REMOTE KEYLESS ENTRY SYSTEM
- ANTI-THEFT SYSTEM WITH ENGINE IMMOBILIZER
- CHROME-ACCENTED FRONT GRILLE, DOOR HANDLES AND WINDOW BELT MOLDINGS



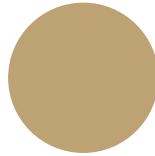
2007 AZERA LIMITED

INCLUDES ALL STANDARD SE FEATURES PLUS:

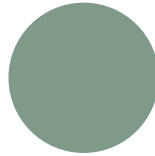
- 17-INCH, 10-SPOKE EUROFLANGE ALLOY WHEELS WITH P235/55R TIRES
- LEATHER-TRIMMED INTERIOR
- HEATED FRONT SEATS
- ELECTROLUMINESCENT GAUGES
- POWER REAR SUNSHADE
- WOODGRAIN-TRIMMED STEERING WHEEL AND DOOR PULLS
- FRONT AND REAR BUMPER MOLDINGS WITH CHROME ACCENTS
- 'LIMITED' BADGING



POWDER WHITE PEARL
BEIGE, GRAY
OR BLACK INTERIOR



GOLDEN BEIGE
BEIGE INTERIOR



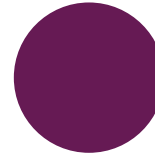
SAGE GREEN
BEIGE, GRAY
OR BLACK INTERIOR



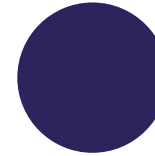
BRIGHT SILVER
GRAY OR BLACK INTERIOR



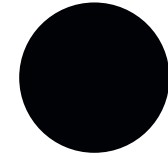
STEEL GRAY
GRAY OR BLACK INTERIOR



AUBERGINE
BEIGE INTERIOR



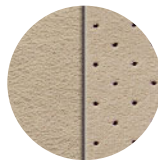
VENETIAN BLUE
BEIGE, GRAY
OR BLACK INTERIOR



EBONY BLACK
BEIGE, GRAY
OR BLACK INTERIOR

EXTERIOR COLORS

INTERIOR COLORS



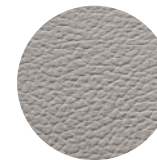
SE BEIGE CLOTH



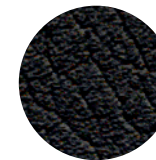
SE GRAY CLOTH



LIMITED BEIGE LEATHER



LIMITED GRAY LEATHER



LIMITED BLACK LEATHER

SE PACKAGES

(P) Premium Package:

- ▣ Power Tilt-and-slide Sunroof
- ▣ 315-watt Infinity Audio System
- ▣ Heated Front Seats

LIMITED PACKAGES

(P) Premium Package:

- ▣ Power Tilt-and-slide Sunroof
- ▣ 315-watt Infinity Audio System

(U) Ultimate Package:

- ▣ Power Tilt-and-slide Sunroof
- ▣ 315-watt Infinity Audio System
- ▣ Power-adjustable Tilt-and-telescopic Steering Wheel
- ▣ Power-adjustable Foot Pedals
- ▣ Integrated Memory System (Driver Seat, Side Mirrors and Power-adjustable Steering Wheel)
- ▣ Power-folding Side Mirrors with Turn Signal
- ▣ Rain-sensing Windshield Wipers

SAFETY FEATURES

	SE	LIMITED
Electronic Stability Control (ESC) with Traction Control System (TCS)	S	S
4-wheel Anti-lock Braking System (ABS) with Brake Assist and Electronic Brake-force Distribution (EBD)	S	S
Advanced Driver and Front Passenger Airbags (SRS) with Occupant Classification System (OCS)	S	S
Front and Rear Side-impact Airbags (SRS), seat-mounted	S	S
Front and Rear Side-curtain Airbags (SRS), roof-mounted	S	S
Front Seatbelt Pretensioners with Force Limiters	S	S
Active Front Head Restraints	S	S
Energy-absorbing Steering Column	S	S
Front and Rear Crumple Zones	S	S
Rear LATCH Child-seat-attachment System	S	S
Anti-theft System with Engine Immobilizer and Alarm	S	S

EXTERIOR FEATURES

Power Tilt-and-slide Sunroof with One-touch Open/Close and Sliding Sunshade	P	P/U
Automatic Three-beam Jeweled Projector Headlights	S	S
LED Tail Lights	S	S
Front Fog Lights	S	S
Dual Heated Power Side Mirrors, manual folding	S	S
Power-folding Side Mirrors with Turn Signal Indicators	-	U
Variable Intermittent Windshield Wipers	S	S
Rain-sensing Windshield Wipers	-	U
Front and Rear Bumper Molding with Chrome Insert	-	S
Remote Keyless Entry System with Trunk Release, Alarm and Panic Alert	S	S

INTERIOR FEATURES

Dual Front Automatic Temperature Control with Outside Temperature Display and Air Quality System (AQS)	S	S
Premium Seating Surfaces	Cloth	Leather
8-way Power Driver Seat with Power-adjustable Lumbar/4-way Power Front Passenger Seat	S	S
Heated Front Seats with Variable Temperature Selection	P	S
172-watt AM/FM/CD/MP3 Six-speaker Audio System	S	S
315-watt Infinity® Audio System with In-dash 6-disc CD Changer, 7-channel Digital Amplifier, 10 speakers, Speed-sensing Volume	P	P/U
Power Windows with Front Auto-down/up and Pinch Protection; Illuminated Window Switches	S	S
Power Door Locks with Auto-lock Feature (dealer activated)	S	S
Power-adjustable Foot Pedals	-	U
Tilt-and-telescopic Steering Wheel, manual	S	S
Tilt-and-telescopic Steering Wheel, power	-	U
Integrated Memory System (driver seat, side mirrors, power-adjustable steering wheel)	-	U
Power Rear Sunshade	-	S
Leather-wrapped Steering Wheel and Shift Knob	S	S
Woodgrain-trimmed Steering Wheel and Door Pulls	-	S
Electroluminescent Gauges	-	S
Electrochromic Auto-dimming Rearview Mirror with Compass	S	S
HomeLink® Integrated Transceiver	S	S
Multi-function Trip Computer (distance to empty, fuel economy, average speed, trip timer, trip distance)	S	S
Front Maplights and Rear Reading Lights	S	S
Center Console with Dual Cupholders, Coin/Mobile-phone Box, Two-tier Storage	S	S
Rear Center Armrest with Cupholders	S	S
Front Seatback Pockets	S	S
60/40 Split Fold-down Rear Seatback	S	S
Driver and Front Passenger Illuminated Vanity Mirrors	S	S
Carpeted Floor Mats	O	O

S = Standard O = Optional Feature - = Not Available

[†] EPA estimates for comparison. Your actual mileage will vary with options, driving conditions, driving habits and vehicle's condition.

While the information contained in this brochure was correct at time of printing, specifications and equipment can change. No warranty or guarantee is being extended in this brochure, and Hyundai reserves the right to change product specifications and equipment at any time without incurring obligations. Some vehicles are shown with optional equipment. Specifications apply to U.S. vehicles only. Please contact your Hyundai dealer for current vehicle specifications.



16-INCH ALLOY WHEEL



17-INCH ALLOY WHEEL

	SE	LIMITED
ENGINE		
3.8-liter, 24-valve, DOHC, All-aluminum V6 with Continuously Variable Valve Timing and Variable Intake System	S	S
Horsepower @ rpm (SAE net)	263 @ 6000*	263 @ 6000*
Torque (lb.-ft. @ rpm)	255 @ 4500*	255 @ 4500*
Compression Ratio	10.4:1	10.4:1
Multi-port Programmed Fuel Injection	S	S
Electronic/Distributorless Ignition System	S	S
Chrome-tipped Dual Exhaust	S	S
DRIVETRAIN/TRANSMISSION		
Drive Configuration: Front-wheel Drive	S	S
5-speed Automatic with Overdrive, Lock-up Torque Converter & SHIFTRONIC®	S	S
Final Drive Ratio	3.33:1	3.33:1
BODY/SUSPENSION/CHASSIS		
Body Type: Five-passenger Sedan	S	S
Unibody Construction	S	S
4-wheel Independent Suspension; front double wishbone, rear multi-link	S	S
Stabilizer Bars (mm.), front/rear	27.0/17.0	27.0/17.0
Twin-tube Gas Shock Absorbers, front and rear	S	S
Power Rack-and-pinion Steering, engine-speed-sensing	S	S
Turning Diameter (ft.), curb-to-curb	37.4	37.4
Electronic Stability Control (ESC) with Traction Control System (TCS)	S	S
Power 4-wheel Disc Brakes, front ventilated	S	S
4-wheel Anti-lock Braking System (ABS) with Brake Assist and Electronic Brake-force Distribution (EBD)	S	S
16-inch, 5-spoke Alloy Wheels with P225/60R Tires	S	-
17-inch, 10-spoke Euroflange Alloy Wheels with P235/55R Tires	-	S
EXTERIOR DIMENSIONS		
Wheelbase (in.)	109.4	109.4
Length (in.)	192.7	192.7
Width (in.)	72.8	72.8
Height (in.)	58.7	58.7
Track (in.), front/rear	62.2/61.6	62.2/61.6
Curb Weight (lbs.)	3629	3629
Coefficient of Drag	.29	.29
INTERIOR DIMENSIONS		
Head Room (in.), front/rear	40.2/38.2	40.2/38.2
Leg Room (in.), front/rear	43.7/38.2	43.7/38.2
Shoulder Room (in.), front/rear	57.9/57.1	57.9/57.1
Hip Room (in.), front/rear	55.5/55.1	55.5/55.1
Passenger Volume (cu. ft.)	106.9	106.9
Trunk Cargo Volume (cu. ft.)	16.6	16.6
EPA Size Classification	Large Car	Large Car
EPA MILEAGE ESTIMATES[†]/FUEL CAPACITY		
City/Highway	19/28	19/28
Fuel-tank Capacity (gal.)	19.8	19.8

S = Standard O = Optional Feature - = Not Available

[†] EPA estimates for comparison. Your actual mileage will vary with options, driving conditions, driving habits and vehicle's condition. While the information contained in this brochure was correct at time of printing, specifications and equipment can change. No warranty or guarantee is being extended in this brochure, and Hyundai reserves the right to change product specifications and equipment at any time without incurring obligations. Some vehicles are shown with optional equipment. Specifications apply to U.S. vehicles only. Please contact your Hyundai dealer for current vehicle specifications.