

2016 HYUNDAI EQUUS



# LUXURY IS ABOUT THE EXPERIENCE. ISN'T IT TIME YOURS WAS BETTER?

**At Hyundai, we engineered Equus with the belief that driving a luxury sedan should make you feel good. Very, very good.** Then, we went a step further and created a luxury car company dedicated to making you feel exceptional.

It starts even before you become an Equus owner. Call us to schedule a test-drive, and we'll deliver an Equus to your home, your office, or the destination of your choice.

Once you're an Equus owner, you won't need to come into the service center. Not for an oil change. Not for a tune-up. When it's time to have your Equus serviced, simply contact us by phone or through the Equus Owner Experience app on your smartphone, and we'll come to you. We'll exchange your car for a Courtesy Replacement Vehicle, then return your Equus when it's ready.

After all, luxury isn't a thing. It's an emotion. And when you own an Equus, you'll feel like you've discovered what true luxury is all about.





## THE ROAD TO ENGINEERING A TRUE LUXURY SEDAN HAS NO SHORTCUTS.

**There are essential ingredients expected of a world-class luxury sedan.**

It starts with a potent V8 engine, of course. In Equus, the delivery of power flows from our award-winning Tau® 429-horsepower V8 and an 8-speed SHIFTRONIC® automatic transmission.<sup>1</sup> Ingenious technologies like Dual Continuously Variable Valve Timing and Gasoline Direct Injection help our Tau V8 deliver torque-rich thrust, whether you're launching from a stoplight or looking to pull out and pass on a long stretch of highway. Next criteria? A rear-wheel-drive chassis. In Equus, it forms the basis for achieving a refined balance of ride comfort and handling precision.

Finally, there's the special ingredients. Equus comes equipped with an Electronic Air Suspension and driver-selectable settings that let you adjust its tuning for Normal (daily driving) or Sport (performance driving) modes. Continuous Damping Control optimizes the suspension's response during acceleration, braking, cornering and uneven roads, while a ride-height control feature maintains consistent vehicle height and pitch – regardless of the number of passengers or cargo onboard. At high speeds, the ride height automatically lowers for enhanced stability. It's the kind of smooth, quiet and composed driving that makes weekend road trips truly relaxing.

## 429-HORSEPOWER V8 8-SPEED SHIFTRONIC

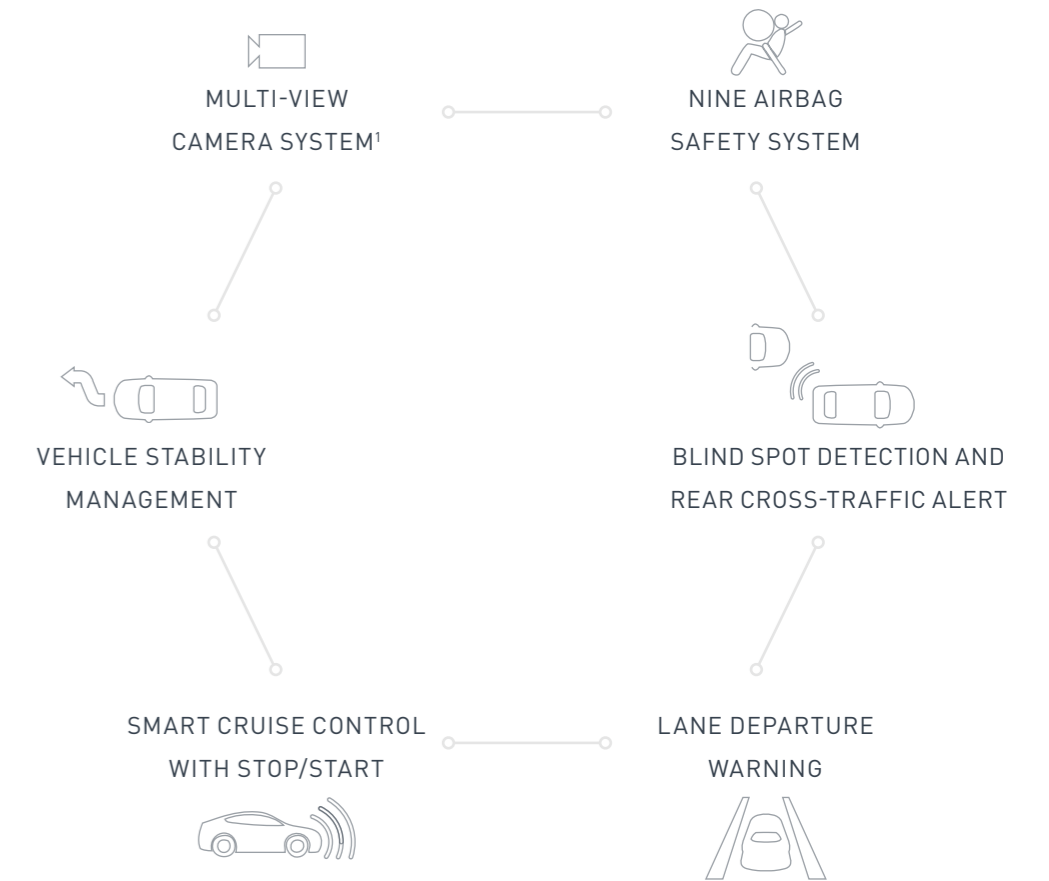
THE 2016 HYUNDAI EQUUS.  
THE HEIGHT OF LUXURY. ACCELERATED.



IT'S SENSITIVE TO YOUR NEED FOR SELF-PRESERVATION.



Equus surrounds you with safety technologies designed to help protect you from hazards large and small. Walk up to the car, and its side mirrors illuminate the ground as you approach. Fog or rain? The windshield senses moisture and defogs automatically, or triggers the wiper system if rain is detected. High Intensity Discharge Xenon headlights follow the direction you're steering and stay level with the road regardless of vehicle load. Getting the sense that Equus puts your safety first? The high value we place on our owners is also evident in the advanced safety technologies that surround the Equus and its occupants.





TO FEEL LIKE YOU'RE THE CENTER OF THE UNIVERSE, SIT HERE.

EQUUS ULTIMATE in Ivory Leather/Ash Wood

**We think Equus drivers ought to feel like the world revolves around them.**

So we designed it to fulfill a driver's need for intuitive controls, clear information and personal security. You can sync your digital life with life on the road using Blue Link,<sup>®</sup> Hyundai's award-winning connected car system.<sup>1</sup>

### BLUE LINK SECURITY FEATURES

Where exactly is your Equus? Set geography or drive-time boundaries, and if they're exceeded by someone who's borrowed your car, you'll be notified by text or email. A Valet Alert monitors the movement of your car within a predefined boundary while you're dining or enjoying a show. Think your car has been stolen? We can help. Our Stolen Vehicle Recovery technology can help pinpoint the location of your Equus.

### BLUE LINK GUIDANCE FEATURES

Using voice commands, you can instruct Blue Link to find the fastest routes with the least amount of traffic. But Blue Link does more than just get you to your destination. It has features that can tell you what you'll find when you arrive. You can download points of interest or addresses directly to your navigation system for precise driving directions.

### BLUE LINK REMOTE FEATURES

Access your Equus from virtually anywhere. Simply download the Blue Link mobile app to your smartphone, and you'll be able to remotely lock and unlock your car. You can also start your car remotely, so the temperature inside is just right when you arrive. Need to find your car in a crowded parking lot? The app lets you flash the lights and honk the horn with your smartphone, too.

<sup>1</sup> Only use Blue Link and corresponding devices when it is safe to do so. Blue Link subscription service agreement required. Features vary by subscription plan. Blue Link service works using CDMA-based cellular networks in the 50 United States. Blue Link service is not available where there is no cellular coverage, particularly in enclosed or remote areas. Service availability may be affected by signal strength, foliage, weather, topographical conditions (mountains) and nearby structures (tall buildings, tunnels) and other factors. For additional details and system limitations, please visit [HyundaiBlueLink.com](http://HyundaiBlueLink.com).



## FINALLY, LUXURY IS DEFINED ON YOUR TERMS.

**When something is your signature, it defines you.** Onboard Equus Signature, luxury is defined by a spacious passenger cabin accentuated in rich wood. And made whisper-quiet by acoustically laminated glass. It's underscored by everything you see and touch, starting with the heated, wood-and-leather-trimmed steering wheel in your hands.

Then, there's heated and cooled front seats that feature a 12-way power driver seat with power lumbar and 10-way power passenger seat. In Equus Signature, the driver, front passenger and second-row passengers can also define their own comfort using individual cabin temperature settings.

Navigation, climate, audio, multimedia DVD and Bluetooth® functions are all visualized on a large 9.2" color display. Key features can be controlled using voice commands or a central knob, and your actions can be confirmed by an available haptic dial control on the steering wheel.

- ▮ PROXIMITY KEY ENTRY WITH PUSH-BUTTON START
- ▮ AVAILABLE HEADS-UP DISPLAY
- ▮ AVAILABLE 12.3" TFT LCD INSTRUMENT CLUSTER DISPLAY
- ▮ BLUETOOTH HANDS-FREE PHONE WITH VOICE RECOGNITION
- ▮ AVAILABLE STEERING WHEEL HAPTIC DIAL CONTROL

- ▮ 3-ZONE AUTOMATIC TEMPERATURE CONTROL
- ▮ HEATED AND COOLED FRONT SEATS
- ▮ AVAILABLE MULTI-VIEW CAMERA SYSTEM
- ▮ SIRIUSXM® SATELLITE RADIO AND DATA SERVICES
- ▮ BLUETOOTH WIRELESS AUDIO STREAMING



For the final word in luxury, consider Equus Ultimate. As its name implies, Equus Ultimate is the pinnacle of accommodation. Gently pull the door shut, and it automatically completes the full closure. Aviation technology is adapted to create an available heads-up display that projects driving vitals directly onto the windshield. Vehicle speed, lane departure alerts and blind spot detection, turn-by-turn navigation routes and the status of the Smart Cruise Control are all visible at a glance.



## FOR THOSE WHO ARE NEVER JUST ALONG FOR THE RIDE.

**Settle into either of the rear seats.** Press the power recline switch, turn on the soothing heat, and you'll know Equus isn't content to let the driver have all the fun. This is a luxury sedan that restores rear passengers their rightful place of honor. In Equus Ultimate, dual 9.2" high-resolution video monitors ensure the individualized entertainment of rear-seat passengers. Lower the power sunshades on the rear side windows and back window to transform Equus Ultimate into your own private screening room.

With its 17 expertly placed speakers, the 598-Watt Lexicon® 7.1 Discrete Surround Sound Audio System delivers a true audiophile listening experience at every seating position. Rivaling the finest home audio systems for clarity and sound separation, it uses a proprietary algorithm programmed to the contours of the Equus interior.

You can source your music from SiriusXM Satellite Radio,<sup>1</sup> HD Radio,<sup>™</sup> a multimedia player with 30GB of media storage, or Bluetooth audio streaming via a paired smartphone or tablet.



<sup>1</sup> All SiriusXM services require a subscription, sold separately by SiriusXM after a three-month trial subscription. Fees and taxes apply. All fees and programming are subject to change. To cancel, please call 1-866-635-2349. See our Customer Agreement for complete terms at [siriusxm.com](http://siriusxm.com). Sirius, XM and all related marks and logos are trademarks of Sirius XM Radio Inc.



## PREMIUM FEATURES WITHOUT THE PREMIUM CHARGES



BLIND SPOT  
DETECTION



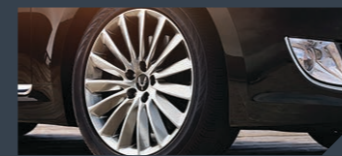
LANE DEPARTURE  
WARNING



HEATED STEERING  
WHEEL

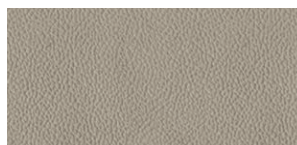


SMART CRUISE  
CONTROL



19-INCH ALLOY  
WHEELS

## INTERIOR COLORS



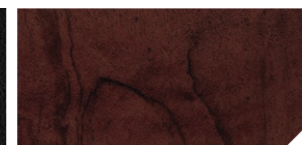
IVORY LEATHER



ASH WOOD

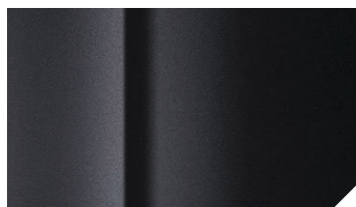


JET BLACK LEATHER

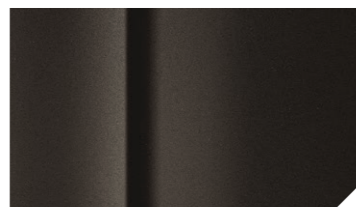


WALNUT WOOD

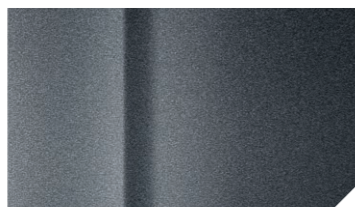
## EXTERIOR COLORS



CASPIAN BLACK



MANHATTAN BROWN



PARISIAN GRAY



SANTIAGO SILVER



CASABLANCA WHITE

## PREMIUM AUDIO SYSTEM



LEXICON 7.1 DISCRETE SURROUND SOUND 17-SPEAKER AUDIO SYSTEM

## 2016 EQUUS SIGNATURE



### KEY STANDARD EQUIPMENT:

- 429 HP, 5.0L Gasoline Direct Injection DOHC Tau® V8 engine with Dual Continuously Variable Valve Timing (421 HP with regular fuel)
- 8-speed SHIFTRONIC® automatic transmission
- Electro-Hydraulic Power Steering
- Electronically controlled air suspension with Continuous Damping Control
- Proximity fob and card key entry with push-button start
- Three-zone automatic temperature control with Air Quality System
- Leather-wrapped dash and real wood interior trim
- Premium leather seating surfaces and microfiber suede headliner
- 12-way power adjustable driver seat with lumbar support
- 10-way power adjustable front passenger seat
- Heated and cooled front seats
- Integrated Memory System for driver seat, side mirrors and steering column
- Heated leather/wood-trimmed power tilt-and-telescopic steering wheel
- Blue Link® connected car system
- AM/FM/HD Radio™/SiriusXM®/CD/DVD/MP3 audio system
- Lexicon® 7.1 Discrete Surround Sound Audio System with 17 speakers
- Premium navigation system with 9.2" LCD screen
- Integrated Driver Information System and multimedia controller
- iPod®/USB and MP3 auxiliary input jacks
- Bluetooth® hands-free phone integration
- Front and rear parking assistance system with rearview camera and Rear Cross-traffic Alert
- Lane Departure Warning with Blind Spot Detection
- Smart Cruise Control with stop/start
- Electroluminescent Supervision cluster with 7" LCD screen
- Auto-dimming rearview mirror with HomeLink® and compass
- Power windows with auto-down/up
- Rain-sensing windshield wipers with de-icer
- Auto-defogging windshield with humidity sensor
- Acoustic laminated windshield, front and rear side windows
- Power tilt-and-slide glass sunroof
- 60/40 power reclining and heated rear seats
- Power rear sunshade
- Illuminated door sill plates, inside door handles and door armrest
- 9-airbag safety system: Advanced dual front airbags, front and rear seat-mounted side-impact airbags, driver knee airbag and roof-mounted side-curtain airbags
- Vehicle Stability Management with pre-collision warning
- Electronic Stability Control with Traction Control System
- 4-wheel disc Anti-lock Braking System with Brake Assist and Electronic Brake-force Distribution
- Electronic parking brake with automatic vehicle hold
- Electronic active front head restraints with power controls
- Electronic seatbelt pretensioners
- Tire Pressure Monitoring System
- 19" alloy wheel design
- High Intensity Discharge headlights with LED turn signal indicators
- Adaptive Front Lighting System with auto-leveling headlights
- LED front fog lights
- Dual power-folding heated auto-dimming side mirrors with integrated turn signal indicators and approach lamps
- Dual asymmetrical exhaust tips integrated into rear bumper
- Premium floor mats and trunk cargo mat

## 2016 EQUUS ULTIMATE



### EQUUS SIGNATURE STANDARD EQUIPMENT PLUS:

- + Heads-up display
- + Full 12.3" LCD instrument cluster display screen
- + Multi-view camera system
- + Forward-view cornering camera
- + Hands-free smart trunk with auto-open
- + Steering wheel haptic dial control
- + Rear seat entertainment system with dual 9.2" displays
- + Cooled rear seats
- + Power rear seat head restraints with manual tilt adjustment
- + Illuminated rear seat vanity mirrors
- + Power rear side-window sunshades
- + Power trunk lid
- + Power lumbar on rear outboard seats
- + Power door closure

### EQUUS CONCIERGE SERVICES

**YOUR TIME, YOUR PLACE TEST-DRIVE:** With one call, an Equus is delivered to your home or office to enjoy an in-depth driving experience. On your schedule.

**VALET SERVICE:** When it's time for an oil change, tune-up or any other service, you can contact us by phone or our iPad® app. We'll pick up your car, deliver a Courtesy Replacement Vehicle, and return your Equus when it's ready.

**FREE MAINTENANCE:** All of the normal scheduled maintenance included in the Equus Owner's Manual is covered for 3 years or 36,000 miles.

**ENHANCED CAR CARE:** Track the well-being of your Equus with Monthly Vehicle Health Reports, Maintenance Alerts and helpful reminders for tune-ups and oil changes.<sup>1</sup>

**ENHANCED SAFETY FEATURES:** Automatic Collision Notification and SOS Emergency Assistance alert Hyundai when your vehicle is involved in an emergency situation.<sup>1</sup>

**CUSTOMER CONNECT CENTER:** Get quick answers to questions about warranty coverage, feature functionality and more by downloading the Equus Owner's Manual app or calling (877) 378-8727 seven days a week.

<sup>1</sup> Requires active Blue Link subscription following an introductory trial period. Trial period starts from the new-vehicle date of first use and is available for new-vehicle purchases and leases on or after May 16, 2013. Only use Blue Link and corresponding devices when it is safe to do so. Cellular and GPS coverage required. Blue Link available on most 2015 and 2016 Hyundai vehicles. Features and fees vary by subscription plan. For more on details and limitations, visit [HyundaiUSA.com](http://HyundaiUSA.com) or your authorized Hyundai dealer.

HYUNDAI  
**Assurance**  
VISIT [HYUNDAIASSURANCE.COM](http://HYUNDAIASSURANCE.COM)

### AMERICA'S BEST WARRANTY

POWERTRAIN LIMITED WARRANTY	NEW VEHICLE LIMITED WARRANTY	ANTI-PERFORATION WARRANTY	24-HOUR ROADSIDE ASSISTANCE
10 YEARS 100,000 MILES	5 YEARS 60,000 MILES	7 YEARS UNLIMITED MILES	5 YEARS UNLIMITED MILES

See dealer for LIMITED WARRANTY details. Fuel economy estimated by EPA for comparison only. Mileage may vary. While the information contained in this brochure was correct at the time of printing, specifications and equipment can change. Feature comparisons based on competitor information available at the time of printing. No warranty or guarantee is being extended in this brochure, and Hyundai reserves the right to change product specifications and equipment at any time without incurring obligations. Some vehicles are shown with optional equipment. Specifications apply to U.S. vehicles only. Please contact your Hyundai dealer for current vehicle specifications. As part of Hyundai's commitment to a responsible environment, this brochure was printed using paper certified by the Forest Stewardship Council®. FSC® certification helps ensure that the highest social and environmental standards are met in the making of the paper we use, contributing to conservation, responsible management, and community-level benefits for people near the forests.

VISIT [HYUNDAI.COM](http://HYUNDAI.COM) OR OUR SOCIAL MEDIA SITES ©2015 HYUNDAI NP020 N2016

### INTERIOR DIMENSIONS

Head Room, front/rear	38.7/37.7 in
Leg Room, front/rear	45.1/38.8 in
Shoulder Room, front/rear	59.1/58.0 in
Hip Room, front/rear	55.5/55.1 in
Total Interior Volume	126.0 cu ft
Passenger Volume	109.3 cu ft
Cargo Volume, trunk	16.7 cu ft

### EXTERIOR DIMENSIONS

Wheelbase	119.9 in
Length	203.1 in
Width, excluding mirrors	74.4 in
Height	58.7 in
Track, front/rear	63.8/64.1 in
Coefficient of Drag	0.27 Cd
Signature Curb Weight	4,553 lbs
Ultimate Curb Weight	4,616 lbs

### EPA MILEAGE ESTIMATES

City/Highway/Combined	15/23/18 MPG
Fuel Tank Capacity	20.3 gal
EPA Classification	Large Car
Emissions	LEV-II ULEV



# TEN YEARS. NO WORRIES. THAT'S HYUNDAI ASSURANCE.

For over a decade, Hyundai has backed every car we've built with this simple promise: Relax. We've got your back for the next 10 years or 100,000 miles. It's a commitment to customers that's evolved into Hyundai Assurance, an umbrella of services that includes America's Best Warranty, 24/7 Roadside Assistance, and more. Visit [Hyundaiusa.com](http://Hyundaiusa.com) for details.



 **HYUNDAI** Equus