

The BMW M5



The Ultimate Driving Machine



THE BMW M5.

**THE NEXT
100 YEARS**







The BMW M5

STUNNINGLY POWERFUL.

- 06 Interior**
Finger on the pulse.
- 08 Exterior**
The design of the BMW M5.
- 14 Performance**
Uncompromisingly athletic.

Technology

POWER PLUS EFFICIENCY.

- 20 Competition package**
Pure racing feel.
- 22 BMW M TwinPower Turbo V8 petrol engine**
Maximum efficiency, maximum performance.
- 26 Chassis and safety**
From the race track to the road.
- 28 BMW ConnectedDrive**
So connected, you're free.

Equipment

THE EXCLUSIVE ART OF INDIVIDUALITY.

- 32 BMW Individual**
- 34 Colours, upholstery and interior trims**
- 38 Standard / Optional equipment**
- 40 Competition package**

Overview

THE BMW M5 AT A GLANCE.

- 42 BMW Service and BMW Brand Experience.**
Exclusive offers for BMW customers.

Editorial

LEADERSHIP.

Power delivery, torque, dynamics: the BMW M5 embodies pure athleticism. An uncompromising presence, a natural leader, it conquers every challenge. Whether on the open road or in the city, it is the perfect interplay of design and performance. And with its M TwinPower Turbo V8 petrol engine with 560hp (412kW), it doesn't just quicken your pulse, it also speeds up your everyday life. The optional Competition package even further enhances the sportiness of this exceptional vehicle with a performance upgrade of 15hp, Sport suspension and new steering set-up. Discover the fascination of speed. The BMW M5.

www.bmw.co.uk
www.bmw.ie



In 2016 the BMW brand will be celebrating its 100th anniversary. Find out more at www.next100.bmw

Equipment of model shown: BMW M5 with Competition package

Engine: M TwinPower Turbo V8 petrol
 Output: 575hp (423kW)
 Wheels: 20" light alloy M Double-spoke style 601M, with mixed tyres
 Exterior colour: Frozen Blue metallic
 Upholstery: M Sport multi-function seats in Full Merino leather, Black
 Interior trim: Aluminium Trace



THE ONLY SOUND: A BEATING HEART.

Finger on the pulse. Driver and vehicle become a perfect team in the cockpit of the BMW M5. Each of the M specific controls is ergonomically positioned for optimum access, while BMW ConnectedDrive Services provide direct and safe connections with the outside world. It all means that drivers become an intuitive part of the vehicle and at one with the road – for a breathtakingly intense experience.



TRANSCENDS EVERY EXPECTATION.

Even when the car is at a standstill it has the self-assured poise of an elite athlete. This is clear to see, in particular, in the M kidney grille with Chrome fronted double Black vertical slats, M5 badge and the striking optional Adaptive LED Headlights. When the BMW M5 accelerates, with its torque of up to 680Nm, it simply takes your breath away and every second counts, of course. This is why the gearshift paddles on the M leather steering wheel put the seven gears of the M Double Clutch Transmission (M DCT) with DRIVELOGIC right there at your fingertips – for absolute control.

MAKES A POINT. WITH EVERY LINE.

Form, inextricably linked with function. The wide track of the M high-performance chassis is framed by striking wheel arches. Within them, the optional Competition package 20" M Double-spoke light alloy wheels find their natural place. The horizontal lines of the muscular flanks and the distinctive swage lines catch the eye. These are all clear signs of the dynamism that this vehicle brings to the road. To the rear, the taillights feature Thin Blade technology, which provides clear defined light to the M5 making it instantly recognisable as a BMW – especially at night.





DRIVING UNDER THE SKIN.



**OUTSTANDING POWER.
ABSOLUTE CONTROL.**



ABOVE AVERAGE. UNDER RECORD TIME.

The M TwinPower Turbo V8 petrol engine with 560hp (412kW) accelerates the BMW M5 from 0 to 62mph in just 4.3 seconds. At the same time, the Active M Differential and optional M Carbon Ceramic brakes guarantee absolute control on the most challenging bends. The optional Competition package shifts even one gear higher: optimised steering, improvements in handling and a performance increase of 15hp (11kW) with 0 to 62mph in 4.2 seconds, all combine to add the finishing touches to a true racing experience.

SILENCES EVERY DISCUSSION.

Designed for maximum performance. Every detail of the BMW M5 expresses uncompromising athleticism while fitting seamlessly into the flowing silhouette of a classic saloon. The dynamically modelled front with large air inlets and aerodynamic exterior mirrors draws the eye to the prominent side sills, behind which the powerful rear crouches as if ready to pounce. The BMW M5 – dynamics that accept no limits.



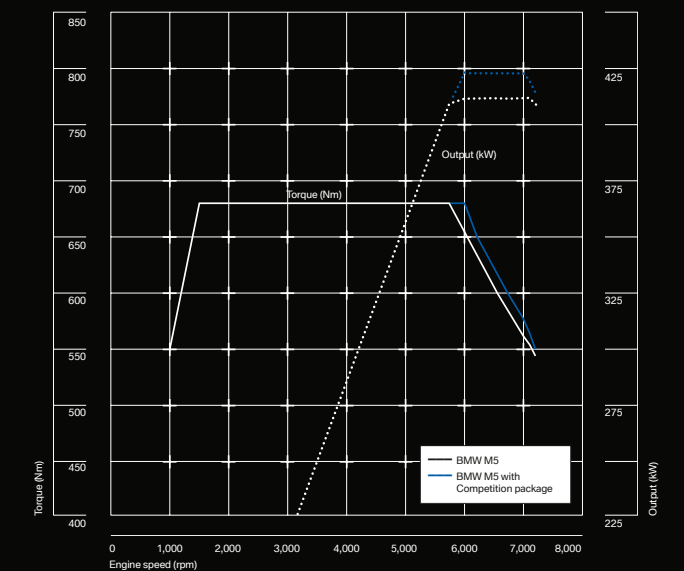
THE COMPETITION PACKAGE: GOOSEBUMPS INCLUDED.



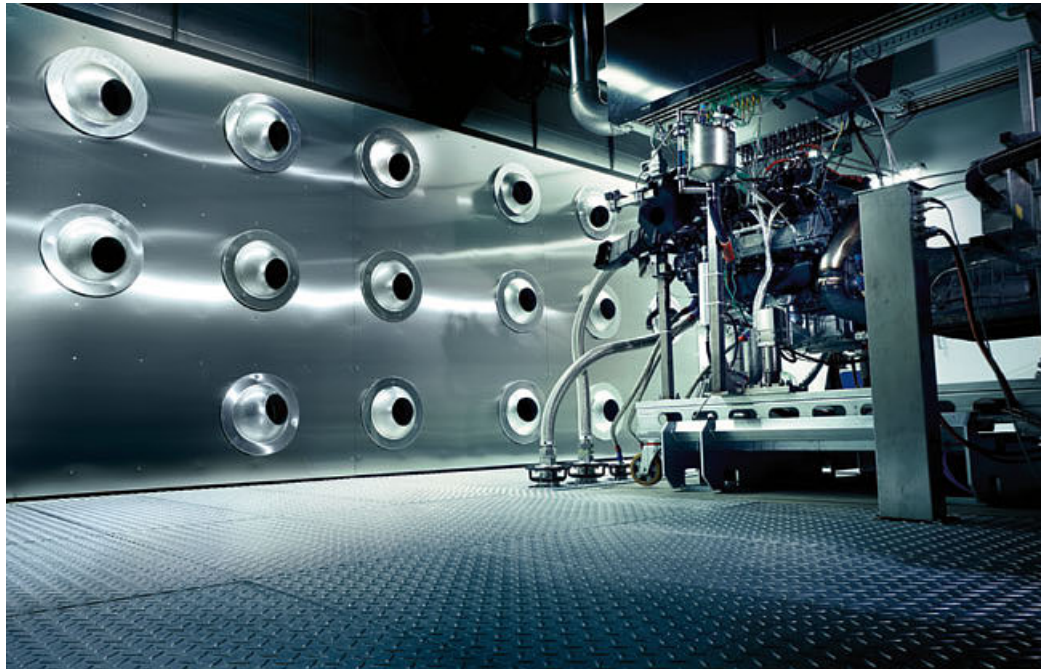
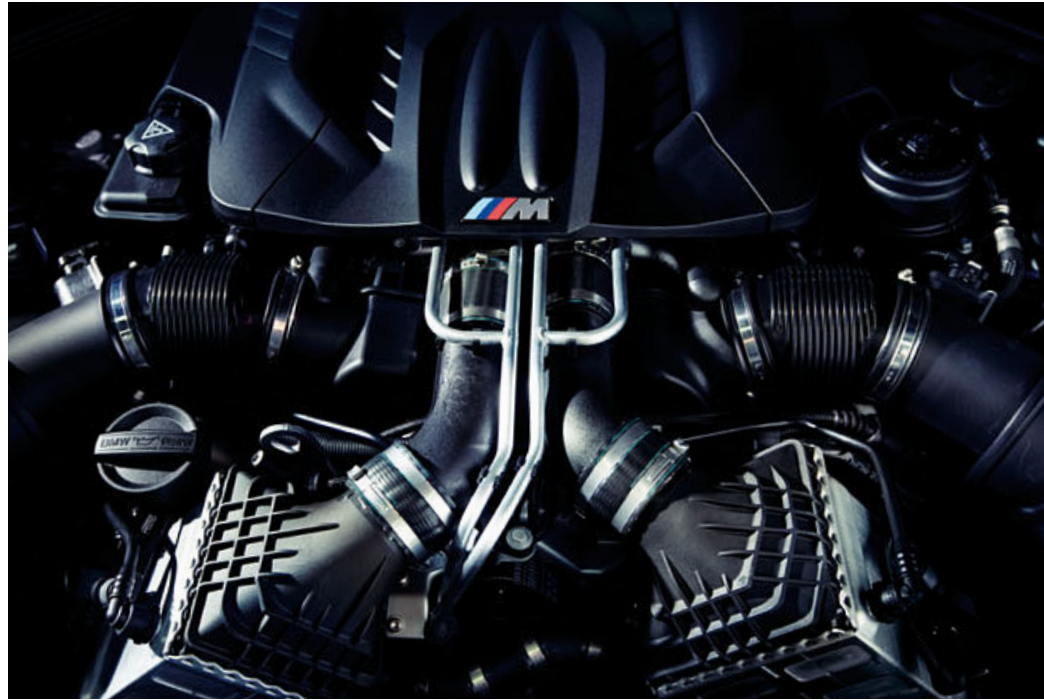
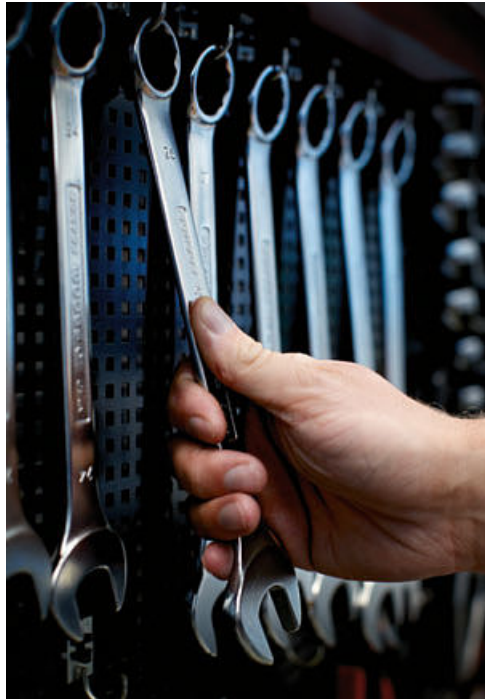
Pure racing feel. With the optional Competition package, the performance of the BMW M5 is brought to every stretch of road with even greater precision. The already scintillating output of the M TwinPower Turbo V8 petrol engine is increased to 575hp (423kW) for the ultimate adrenaline kick.

The engineers at BMW M GmbH achieved this by raising the charge pressure in the upper rev range. A modified exhaust system, meanwhile, ensures a powerful engine note with a guaranteed goosebump factor. The suspension in the Competition package also showcases the utmost skill and precision. It has been lowered by 10 millimetres and the spring rate has been raised, with the damping forces and stabilisation levels adjusted accordingly. Additionally, the characteristics of the Dynamic Damper Control system are adapted to the increased dynamics and the M Dynamic Mode (MDM) settings are further defined. As for the steering, this is even more direct, while providing authentic feedback from the road. The steering ratio, revised by 10%, ensures exceptionally precise responses to every movement of the wheel.

Externally, the BMW M5 with the Competition package impresses with exclusive 20" light alloy M Double-spoke style 601 M wheels, with mixed tyres, and the four Black Chrome tailpipes of the Sport exhaust system. This much is certain – your pulse won't be getting much of a break with the Competition package BMW M5.

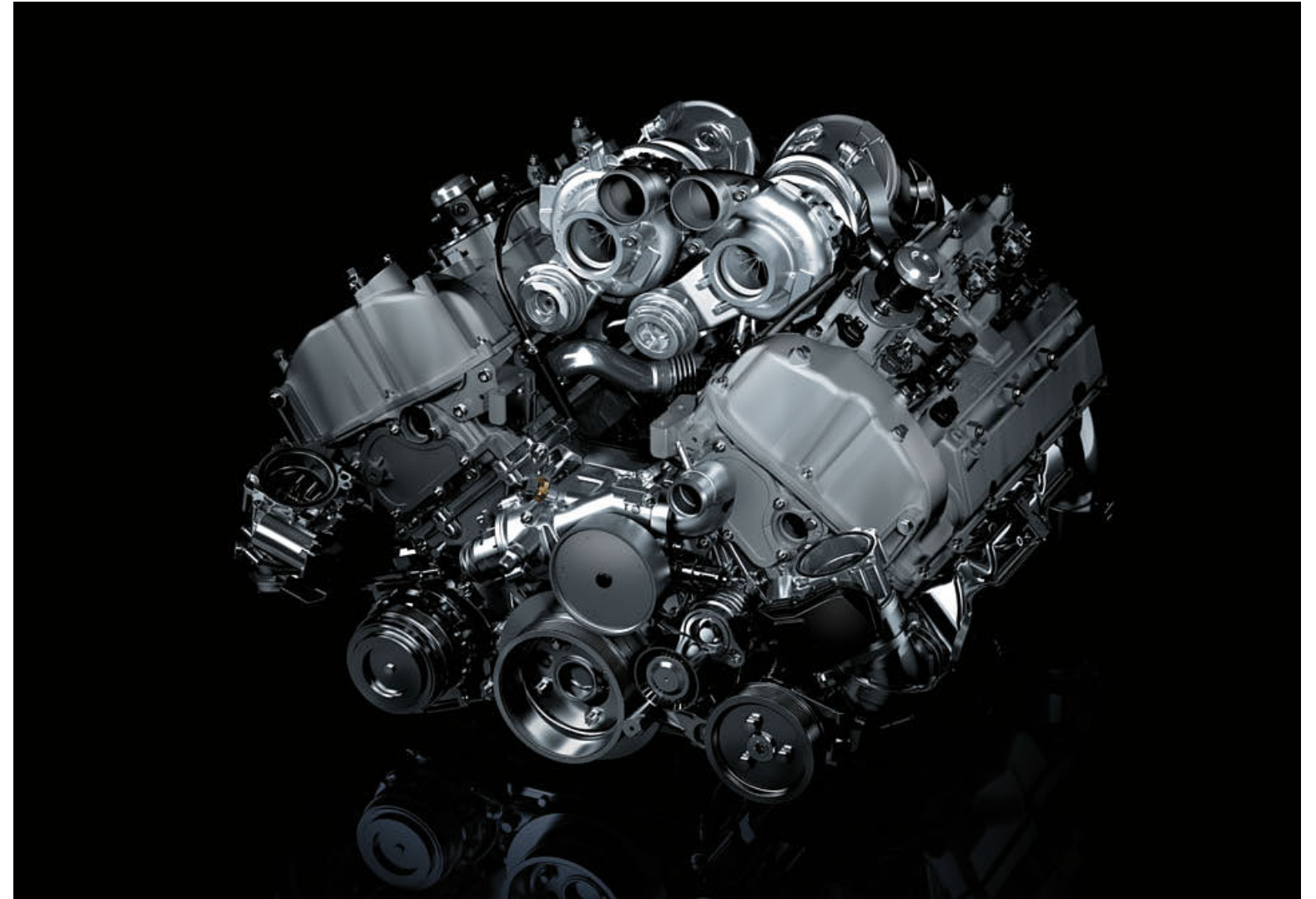


With the Competition package, output of the M TwinPower Turbo V8 petrol engine is increased to an impressive 575hp (423kW). Maximum torque of 680Nm is available across a wide engine speed range, from 1,500rpm to 6,000rpm.



A POWERHOUSE OF A POWERPLANT.

The M TwinPower Turbo V8 petrol engine. This, the most powerful of all the BMW production engines, is distinguished by its enormous performance, outstanding power delivery, running smoothness and free-revving character. The engine also sets the bar very high with its performance-to-fuel-consumption ratio – completely in line with the philosophy of BMW EfficientDynamics.



The BMW M5.

The numbers speak for themselves: with 560hp (412kW)¹ and torque of up to 680Nm, the BMW M5 accelerates from 0 to 62mph in just 4.3 seconds (with the Competition package: 4.2 seconds). The high-revving M TwinPower Turbo V8 petrol powerplant makes a singularly forceful statement when it comes to performance and acceleration. The combined forces of M typical linear delivery and enormous thrust from the double turbocharger fully exploit the superb pulling power of the high-performance engine. Two separate and generously dimensioned intercoolers cool the engine, the charge air and the engine electronics, while patented M TwinScroll charging ensures extraordinary responsiveness. Huge torque is available across a wide engine speed range with emphatic forward thrust on tap from just over idle right through to high revs. Thanks to the spectacular responsiveness, the engine is always responsive to the accelerator while the transverse force oil pump ensures optimal lubricant delivery to the engine, even during high transversal acceleration. Thanks to M TwinPower Turbo technology, which combines two TwinScroll turbochargers with VALVETRONIC, Double-VANOS and High-precision direct injection, the engine also sets benchmarks when it comes to the performance-to-fuel-consumption ratio. In combination with further BMW EfficientDynamics features, such as Auto Start-Stop, this results in an average fuel consumption of 28.5mpg (9.9l/100km). You will enjoy every mile as the seductive M sound emphasises the unique character of this high-performance vehicle.

¹ In conjunction with the optional Competition package: 575hp (423kW).

HIGH FLYER.

From a meeting straight to the race track – only possible in the BMW M5. BMW M5 project leader Maximilian Ahme is currently driving the sharpest company car in the world. We talk to him about the fascinating character of the power saloon.

For more than 25 years, the BMW M5 has been regarded as the sportiest saloon in the world. What makes the latest generation model even better than its predecessors?

Ahme: Like every previous M5, it is a wolf in sheep's clothing. On the one hand it's a comfortable saloon, on the other a racing car. And the sporting character is brought to the road even more impressively with the optional Competition package. It's all offered in state-of-the-art design with the latest technology such as Adaptive LED Headlights.

So what are the figures behind this apparent contradiction?

Our eight-cylinder petrol engine with M TwinPower Turbo technology reaches 560hp at 6,000–7,000rpm and develops 680Nm of torque. With the Competition package, this increases to 575hp. Whatever performance level, this is one of the few engines that unites two things: turbocharging and high engine speeds. This enables acceleration from 0 to 62mph (100km/h) in just 4.3 seconds (Competition Package: 4.2s). Even above 200km/h, you still feel powerful thrust when pressing on the accelerator. It's incredible.

Describe the technology behind this strong performance.

We work with two precisely responding chargers and a special manifold to optimise exhaust flow. On top of that, there's High Precision Injection, variable control of the intake valves and adjustable camshafts. And because our engine develops so much power, we completely filled the available space under the bonnet with coolers.

What are the special features of the cooling system?

It is an intricate solution with a flat-lying oil cooler and two external coolers for the charge air. We have one circuit for low temperatures and one for high. The charge air for each cylinder bank is cooled separately and we even air-condition the engine electronics.



In addition to engine performance, BMW M5 drivers also attach great importance to sharp handling and biting traction. What does the BMW M5 offer in these areas?

We continue to use the precise and sensitive hydraulic steering system. And with the Competition package, directness has been improved by around 10 per cent. In conjunction with the powerful rear-wheel drive, the driver gets genuine feel for the road and the forces on the front wheels. Also, the M differential lock increases traction on the rear axle and provides even greater agility.

How does the Active M Differential work?

It adjusts electronically and in advance. The previous system only locked with wheelspin on the rear axle. Now we can steer the lock proactively. An electronic control unit links the active system and DSC. If the accelerator is engaged and the sensors anticipate wheel spin, locking torque is applied to the differential. This prevents wheelspin, power is optimally transferred to the tarmac and the driving situation is dynamically controlled.

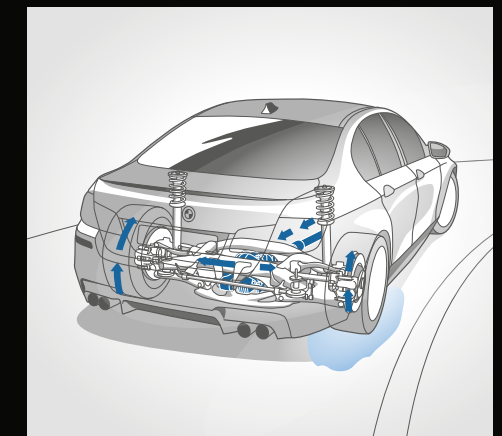
Are there any more advantages to the rear-axle lock?

The Active M Differential is completely off during normal driving, so the BMW M5 is even smoother when the driver brakes sharply or steers spontaneously. This was evident during our fine-tuning test drives on race tracks like the legendary Nürburgring. The lock also stabilises the vehicle during high-speed lane or other load changes.

The technical prowess of the BMW M5 makes for a fascinating drive. You have already covered many kilometres in this sharp company car. What impresses you the most?

The unique technology. From the engine, the transmission and the electronic dampers to the completely reworked suspension, it's the perfect symbiosis of business and motor sport. The experience is at its most intense in the BMW M5 with the Competition package. On the one hand, you can drive comfortably for long stretches. On the other, you are ready for the race track at the touch of a button. The switch happens via the two M Drive buttons on the steering wheel. The driver can configure these in advance according to preference. The result is a fantastic feeling: control and freedom.

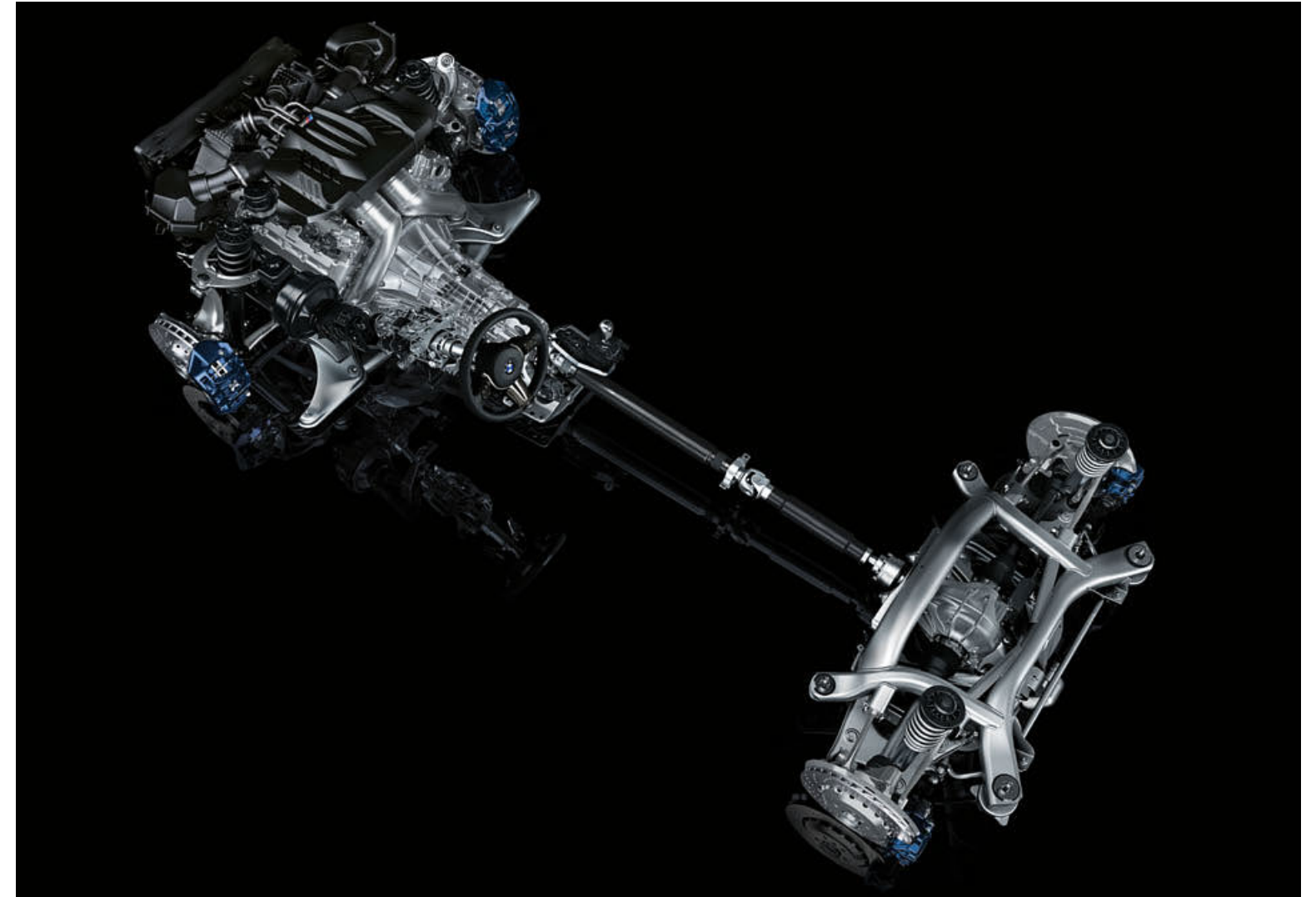
Active M Differential: optimises traction at full power, even in tight bends, during high-speed cornering and on variable road surfaces.





POLISHED TO PERFECTION. THE M HIGH-PERFORMANCE CHASSIS.

Conventional rules do not apply to the BMW M5. An independent production of BMW M GmbH, it remains faithful to the M philosophy, perfectly combining high performance with optimum everyday practicality. To fulfil these high demands, the intricately constructed M high-performance chassis has been entirely redeveloped.



Active M Differential.

This optimises traction at full power, in tight bends, during high-speed cornering and on variable road surfaces. An electronic control unit links the active system and DSC to proactively ensure the intelligent use of locking force in every driving situation. In this way, no drive power is wasted and the vehicle delivers perfect handling.

M Carbon ceramic brakes.

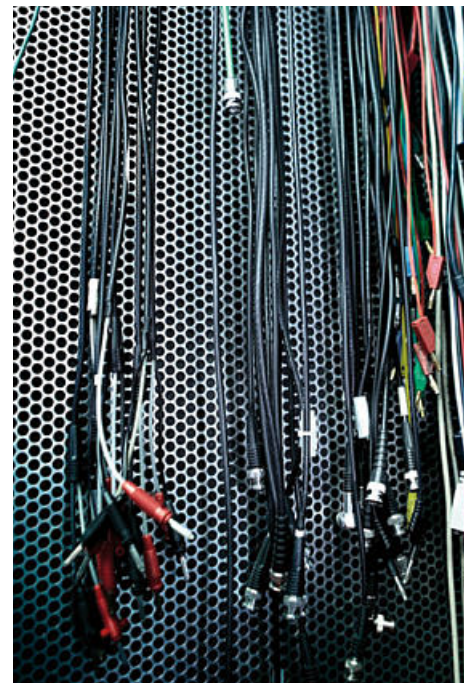
The high-performance brakes of the BMW M5 offer exceptional performance and are extremely resilient. At the same time, the lightweight system reduces unsprung mass, has maximum resistance to fade and offers a long lifespan. The optional M Carbon ceramic brakes offer even better resistance to heat and are finished in matte gold with coloured M logo.

M Dynamic Damper Control.

The driver uses this system to adapt the characteristics of the dampers to the driving situation. In addition to the standard Comfort setting, there are two programmes: Sport and Sport+. These set the shock absorbers to a firmer position, for an exciting, sporty ride.

M Dynamic mode.

Two M Drive buttons on the steering wheel offer pre-programmed configurations for either a sporty or a comfortable drive. One of these is M Dynamic mode. For a particularly authentic driving experience, it enables optimum use of longitudinal and lateral dynamics potential by raising the intervention threshold of the Dynamic Stability Control (DSC) system. In this way, it only intervenes in critical situations.



BMW CONNECTED DRIVE SERVICES AND APPS.

Wherever your journey may lead, you can stay in touch with BMW ConnectedDrive Services. The range of innovative functions provide optimum integration between the driver, vehicle and the world outside – anytime, anywhere.



BMW EMERGENCY CALL (standard).

Known as BMW eCall, this service provides a direct link to the local Emergency Services. You can summon help manually by simply pressing the SOS emergency call button to request for assistance. Additionally, if your vehicle is involved in a more serious accident an automatic emergency call is made, providing extra reassurance that if you cannot call for help, your BMW will on your behalf. With either the manual or the automatic emergency call, details of your vehicle and location will be sent directly to a Emergency Service Centre, so that immediate action can be taken and assistance dispatched without delay. BMW Emergency Calls are made using the integrated BMW SIM card so no mobile phone is required.



REAL TIME TRAFFIC INFORMATION (standard).

Provides a precise account of current traffic situations in real time. The information is presented on the Navigation map by using a colour coding system indicating the flow of traffic. Road networks are divided into distances as short as 500m for superior accuracy and dependency. Information is automatically updated every 3 minutes allowing the driver to monitor whether the traffic situation is improving or worsening. The system also recommends for or against alternative routes based on the potential time saving benefits.



CONCIERGE SERVICE (standard).

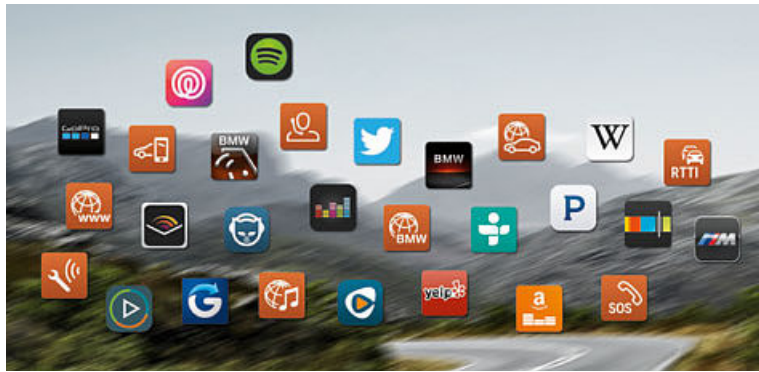
At the push of a button local information is available wherever you may be. The service connects you to a BMW operator who will be able to quickly access the information you need. So whether you are looking for a nearby hotel, restaurant or simply can't find your way then support is conveniently on hand. Information can be sent directly to your BMW so that addresses can be transferred to your Navigation system. Concierge Service calls are made using the integrated BMW SIM card so there is no need for a mobile phone and you can use the service as much as you like at no additional cost.

BMW CONNECTED DRIVE SERVICES AND APPS.



MOBILE OFFICE (standard).

With a compatible mobile device you can access a host of features, including your contact lists, text messages, calendar entries and emails directly through your Control Display using the iDrive Controller. Details can even be read out to you with the text-to-speech function, and with Message Dictation¹ your spoken reply is converted into a text document that you can then send out. So you can make profitable use of your time behind the wheel, and remain focussed on what's most important: the road ahead.



BMW APPS (standard).

With BMW Apps, users can download the free 'BMW Connected' iPhone application. This allows you to integrate a range of popular smartphone apps within your vehicle. Using the iDrive Controller, you can select web radio stations from around the world, call up the latest status reports from your Twitter account and view your iCalendar on the vehicle Control Display.



BMW ONLINE SERVICES (standard).

With the internet-based services from BMW Online you can conveniently keep up to date with the latest news and sports headlines from the comfort of your BMW. You can plan ahead with Google™ send-to-car and a detailed five-day weather forecast. Search for accurate location-based information in a live online database and stay in touch with your emails using the BMW Online Office. No mobile phone is required since access to BMW Online information is via the integrated BMW SIM card, so you can use the services as much as you like at no additional cost.

BMW CONNECTED DRIVE DRIVER ASSISTANCE.

The comprehensive range of advanced driver assistance systems from BMW ConnectedDrive seamlessly integrate the driver into their immediate environment. Headlights, sensors, cameras and radars can combine to ensure the driver is fully informed about what is happening around them, delivering superior comfort and convenience as well as enhanced safety for both passengers and other road users.



HEAD-UP DISPLAY (standard).

A full colour TFT display projects important driving information onto the windscreen, in your direct field of vision. The information that is displayed can be customised in the vehicle settings and includes the current speed of travel, navigation instructions or telephone and music listings. This convenient display ensures that your eyes are always on the road ahead for a safer driving experience.



COMFORT ACCESS WITH SMART-OPENER (optional).

This system allows you to unlock, lock and start your BMW without inserting or having to hold the key in your hand. When you have the key fob on your person, simply touch the door handle or boot lid and the BMW unlocks or locks as required by transmitting an identification signal to the car. Similarly, a touch of the Start-Stop button is all it takes to start the engine. Includes smart-opener which is a contactless opening of the boot lid via a sensor underneath the rear bumper, adding extra convenience when you have your hands full.



INTELLIGENT HEADLIGHTS (standard).

A tailored combination of advanced headlight technologies combine to ensure optimum illumination of the road ahead without glaring on-coming traffic or other road users. High-beam Assistant monitors the road ahead and controls the beam of the headlights to improve visibility during night time and poor weather driving conditions. Whilst Xenon Headlights include bi-xenon and LED technology to enhance the visual styling appeal in all conditions.

¹Details on device compatibility can be found at www.bmw.com/bluetooth. Message Dictation is only available with BMW Navigation system – Professional.

BMW Individual

The expression of personality.



BMW Individual Frozen Dark Silver.



The BMW M5. Inspired by BMW Individual.

□ Driving a BMW is, in itself, a mark of character. There are those who still, however, want their vehicles to be even more individual reflections of their personality. The BMW Individual Collection and the BMW Individual Manufaktur meet these needs by opening up seemingly limitless opportunities for differentiation.

Precisely in tune with each model, the BMW Individual Collection offers a highly exclusive selection of equipment options. Fascinating paint finishes either refracting the light or with a matt effect. Leather, unique in colour and scope of application, perfected with clever contrasts and decorative stitching. Interior trims in the most exclusive fine woods, the immaculate Piano finish and the finest leather.

And yet even this can be surpassed – thanks to the BMW Individual Manufaktur. Here, there is only one goal: realising almost any customer request, even the most personal, with stylish, hand-crafted perfection.



BMW Individual interior trim Piano Black.



BMW Individual Extended Merino leather in Nutmeg with leather instrument panel and Alcantara Headlining.



Exterior colours.



■ **Metallic** 475 Black Sapphire



■ **Non-metallic** 300 Alpine White



■ **Metallic** A29 Silverstone



■ **Metallic** A52 Space Grey



■ **Metallic** B05 Monte Carlo Blue



■ **Metallic** B50 Sakhir Orange



■ **Metallic** B41 Singapore Grey



■ **Metallic** B65 Jatoba

BMW INDIVIDUAL



□ **BMW Individual** X04 Moonstone metallic



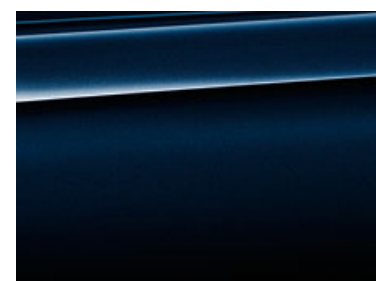
□ **BMW Individual** 490 Frozen Silver metallic



□ **BMW Individual** 490 Frozen Grey metallic



□ **BMW Individual** 490 Frozen Black metallic



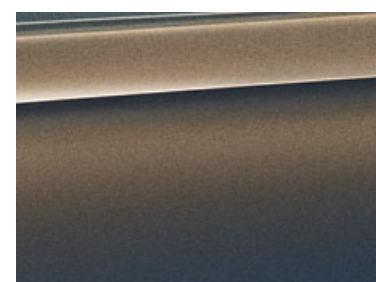
□ **BMW Individual** S34 Azurite Black metallic



□ **BMW Individual** 490 Frozen Blue metallic



□ **BMW Individual** X13 Pyrite Brown metallic



□ **BMW Individual** X08 Champagne Quartz metallic



□ **BMW Individual** X11 Frozen Bronze metallic



□ **BMW Individual** 490 Frozen Brilliant White metallic



□ **BMW Individual** X02 Citrine Black metallic



□ **BMW Individual** 490 Brilliant White metallic



□ **BMW Individual** 490 Frozen Cashmere Silver metallic

[Colour samples] The following pages show the colours and materials available for the BMW M5. Use them to identify your favourite colours, or compare various combinations. These colour samples are meant to give a first impression of paints and materials. Experience has shown, however, that printed versions of paint, upholstery and interior trims cannot in all cases faithfully reproduce the appearance of the originals. We therefore recommend that you consult your BMW Retailer on your preferred colour choices. They will be happy to show you samples and assist you with any requests.

Interior colours.

LEATHER



■ **Extended Merino leather**
LKSX Black



■ **Extended Merino leather**
LKA9 Silverstone



■ **Extended Merino leather¹**
LKDA Sakhir Orange



□ **Full Merino leather¹**
X3SW Black



□ **Full Merino leather¹**
X3A9 Silverstone



□ **Full Merino leather¹**
X3DA Sakhir Orange

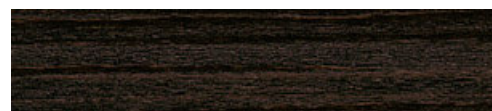
INTERIOR TRIMS



■ 4L9 Aluminium Trace



□ 4BN Dark Ash-grain wood, High-gloss



□ 4CE Finline Anthracite wood, High-gloss

INTERIOR COLOUR



Black

BMW INDIVIDUAL LEATHER



□ **BMW Individual Extended Merino leather^{1,2}**
ZAC8 Platinum



□ **BMW Individual Extended Merino leather^{1,2}**
ZAKS Cashmere Beige



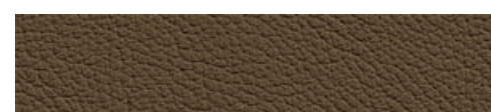
□ **BMW Individual Extended Merino leather^{1,2}**
ZAP6 Champagne



□ **BMW Individual Extended Merino leather^{1,2}**
ZAP7 Silk Grey



□ **BMW Individual Extended Merino leather^{1,2}**
ZAP5 Amaro Brown



□ **BMW Individual Extended Merino leather^{1,2}**
ZAML Nutmeg

BMW INDIVIDUAL INTERIOR TRIMS



□ **BMW Individual interior trim**
XEW Light Sen wood, High-gloss



□ **BMW Individual interior trim**
XE5 Auburn Sycamore wood, High-gloss



□ **BMW Individual interior trim**
XE7 Piano Black

BMW INDIVIDUAL HEADLINING



□ **BMW Individual Alcantara headlining**
XD5 Platinum



□ **BMW Individual Alcantara headlining**
XD5 Champagne



□ **BMW Individual Alcantara headlining**
XD5 Silk Grey



□ **BMW Individual Alcantara headlining**
XD5 Amaro Brown



□ **Headlining**
776 Anthracite Alcantara



■ **Headlining**
775 Anthracite

Please note that even normal long or short-term use can lead to unrecoverable upholstery damage. This can be caused in particular by non-colourfast clothing.

¹ Only available with M Sport multi-function seats (front).

² BMW Individual Extended Merino leather upholstery includes front and rear seats including headrests, inserts in door trims, centre console including armrests and the lower part of the instrument panel.

Standard / Optional equipment.



■ **M kidney grille** with Chrome fronted double Black vertical slats and M5 designation.



□ **552 Adaptive LED Headlights.** Full 'white' LED headlights for both low and high beam offer a greater resemblance to daylight. Includes automatic height adjustment, four 'white' LED corona rings that can be used for Daytime Driving Lights. Includes LED front indicators and Adaptive Headlights which improve visibility by following steering angle of the front wheels for better illumination of the road ahead through corners.



■ **M Sport leather multi-function steering wheel** with gearshift paddles and two M Drive buttons.



■ **M Instrument panel** with full Black panel display. Featuring permanently illuminated white surrounds and red needles for speedometer and rev counter as well as displays for gearshift indicator, M specific systems, M DCT and oil temperature.



□ **6F2 B&O Advanced audio system** with new Dirac Dimensions signal processing. Includes 16 loudspeakers, with an automatically extending centre speaker which includes a mid-range function and Acoustic Lens technology for consistent sound at all seating positions. Choose between two settings: Studio and Expanded.



□ **688 Loudspeaker system – harman/kardon** with surround mode, digital amplifier with vehicle-specific equalising, 600W amplifier power with nine channels and 16 loudspeakers.



■ **Compound disc brake - front and rear, ventilated** guarantee reliable deceleration with maximum stability. The system, featuring brake calipers in Blue with M designation, responds quickly, is finely measured and has a precise pressure point even under the most extreme conditions.



□ **2NK M Carbon ceramic brakes** offer maximum resistance to fade and high thermal tolerance. They are extremely hard-wearing and resistant to corrosion. The system also has a longer lifespan and low weight. Calipers feature M designation and are finished in matte gold and a coloured M designation.



■ **Door sill finishers**, with illuminated M5 designation, make a powerful statement the moment you get in.



■ **Gear lever** for the seven-speed M Double Clutch transmission with DRIVELOGIC, with M designation, illumination and M driving dynamics buttons.



■ **M Sport seats** with M stitching, firmly contoured seat sides and backrest cheeks, electric backrest, forward/rear and height adjustment, high support, angle adjustment and driver's seat memory function.



□ **4MA M Sport multi-function seats** for driver and front passenger. Additional electric adjustment of the upper backrest, backrest width and thigh support, including comfort headrests with electric adjustment of headrest height as well as lumbar support and memory function for driver and front passenger.



■ **19" light alloy M Double-spoke style 345 M** with mixed tyres. Front 9J x 19 with 265/40 ZR19 tyres. Rear: 10J x 19 with 295/35 ZR19 tyres.



□ **2NZ 20" light alloy M Double-spoke style 343 M**, Forged, with mixed tyres. Front: 9J x 20 with 265/35 ZR20 tyres. Rear: 10J x 20 with 295/30 ZR20 tyres.



□ **2TY 20" light alloy M Double-spoke style 343 M**, Forged, Black, with mixed tyres. Front: 9J x 20 with 265/35 ZR20 tyres. Rear: 10J x 20 with 295/30 ZR20 tyres.



□ **2TX 20" light alloy M Double-spoke style 601 M**, with mixed tyres. Front: 9J x 20 with 265/35 ZR20 tyres. Rear: 10J x 20 with 295/30 ZR20 tyres. (Only with Competition package)



□ **BMW M Performance Carbon interior trim.** 100% Carbon, the lightweight motorsport material, for the interior. Hand-crafted with precision and featuring six to seven clear coats for an unparalleled impression of depth and gloss.



□ **BMW M Performance carbon rear spoiler** – a striking sign of sporting superiority. Reduces lift on the rear axle. Crafted by hand.



□ **BMW M Performance Carbon wing mirror caps.** Pure hi-tech individuality that catches the eye. Expertly hand-made in 100% Carbon, ultra light and a perfect fit.

Competition package.



□ **2TX 20" light alloy M Double-spoke style 601 M**, with mixed tyres. Front: 9J x 20 with 265/35 ZR20 tyres. Rear: 10J x 20 with 295/30 ZR20 tyres.



□ **Twin dual exhaust tailpipes in Black Chrome**, Sport exhaust system, optimised for a particularly powerful sound.

□ **Competition package.** Experience pure high-performance and ultimate motorsport feel with the specially developed Competition package. The increase in dynamics comes from a rise in engine output to 575hp (423kW) and a more direct steering set-up. In addition, the suspension, along with other features, is re-engineered and lowered by 10mm and M Dynamic mode (MDM) is modified. The Competition package is recognisable by the exclusive 20" light alloy M Double-spoke style 601 M wheels and Black Chrome twin dual tailpipes of the Sport exhaust system.

THE BMW SERVICE CONCEPT:

When you buy a BMW, you can look forward to superb service and comprehensive customer care. **Condition Based Service** tracks service fluids and parts subject to wear, and where appropriate indicates required service stops on the display. In combination with **BMW TeleServices**, the vehicle data collected by Condition Based Service are automatically transmitted to BMW. Your preferred **BMW Service Retailer**

BMW SERVICE INCLUSIVE.



BMW Service Inclusive:

Wouldn't it be good to know your comprehensive servicing costs in advance? Well, that's exactly what BMW Service Inclusive¹ provides and for a low one-off payment.

BMW Service Inclusive¹ lasts for 5 years or 50,000 miles (whichever occurs first) and covers all your vehicle's comprehensive servicing requirements. Alternatively you can choose BMW Service Inclusive Plus¹ which in addition to servicing also covers maintenance items such as brake pads, brake discs and windscreen wipers. And whenever

BMW EMERGENCY SERVICE.



BMW Emergency Service. BMW Emergency Service is the only roadside and assistance programme designed specifically for BMW vehicles offering an exceptional range of benefits and services. It is available 24 hours a day, 7 days a week and utilises a dedicated fleet of BMW Approved Technicians, equipped with Genuine Parts and tools, ensuring that you and your vehicle receive the best possible care in the event of any motoring emergency.

THE BMW EXPERIENCE.



BMW News: To ensure you're one of the first to hear the latest BMW news and developments, BMW UK offer an email programme. Sign-up at: www.bmw.co.uk/newsletter



BMW World, an iconic building in the Munich skyline. The BMW World is a true brand experience where it's possible to marvel at the historic BMWs in the museum, learn about our engineers' newest innovations and take a tour of the plant to experience with your own eyes the cutting-edge and exacting methods used to create a BMW.



BMW Magazine: Every new BMW customer receives a complimentary subscription to BMW Magazine. This publication features all the latest news and developments from BMW, together with a variety of driving and lifestyle features.

can access the vehicle data. They will contact you when necessary to arrange a service appointment where the required repairs can be performed, using **Genuine BMW Parts**, so your driving pleasure can continue indefinitely. Worldwide, you can call on more than **3,300 Service Authorised Workshops** in more than **150 countries**.

BMW CONNECTED DRIVE SERVICES.



BMW ConnectedDrive Services.

A function using the built-in BMW SIM card to provide telematic and online services that are fully integrated into your BMW vehicle. All services require connection to a UK mobile network. Some services are available in other European countries. The range of ConnectedDrive Services that are available depends on the specification of the vehicle. The service duration varies depending on the ConnectedDrive Service.

BMW FINANCIAL SERVICES.



BMW Financial Services: BMW Financial Services offers a range of finance and insurance solutions designed to help you drive the BMW of your choice. All our products offer you the flexibility to customise your finance, making driving any BMW a reality. After all, who knows more about financing your BMW than BMW.

For customers in the United Kingdom If you would like to find out more information, visit www.bmwfs.co.uk Here, you will also find details of our comprehensive range of products and current offers engineered for every eventuality. BMW (UK) Ltd is a credit broker and not a lender. Finance is subject to status and available to over 18s in the UK only. Guarantees and

For further information on BMW ConnectedDrive Services and terms and conditions please visit www.bmw.co.uk/connecteddrive-information

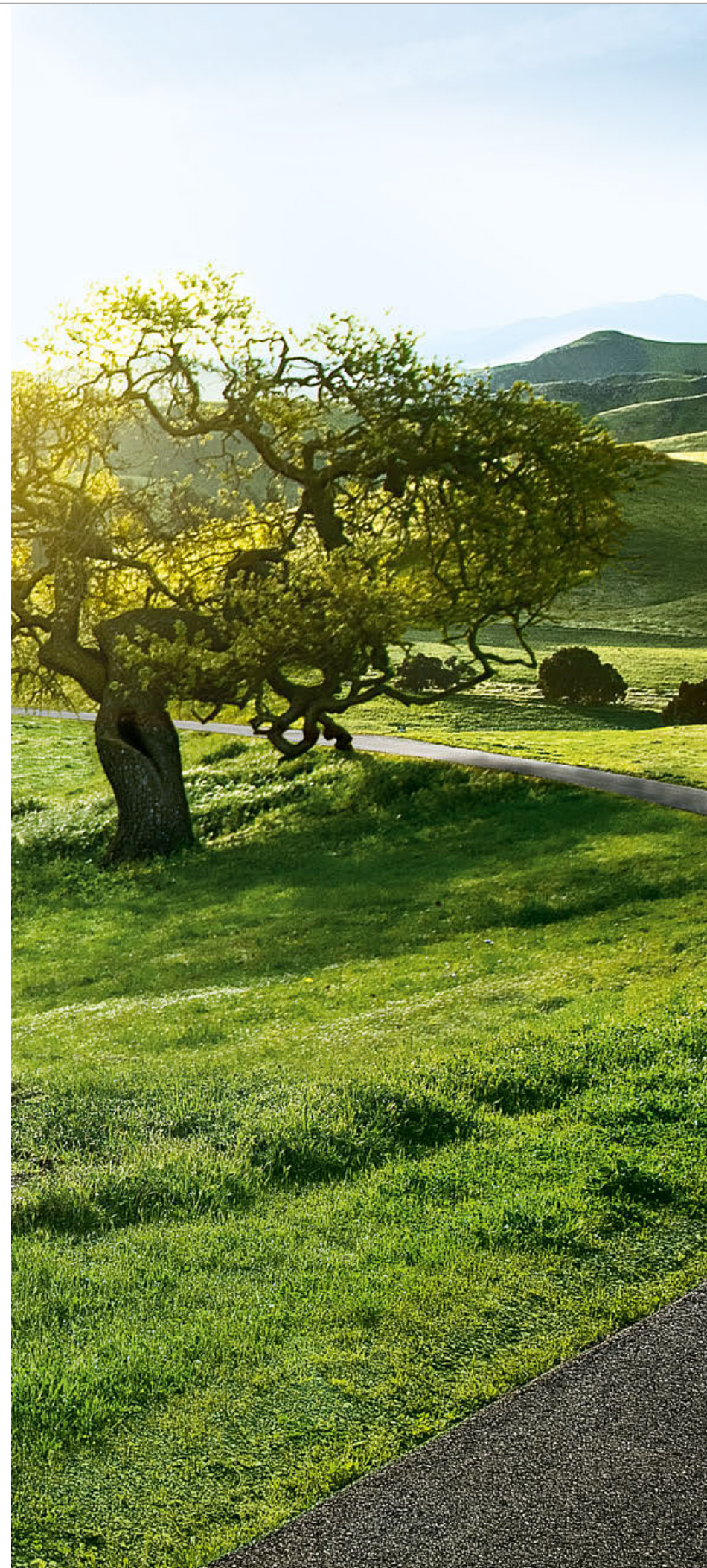
indemnities may be required. Finance is provided by BMW Financial Services (GB) Limited, Summit ONE, Summit Avenue, Farnborough, Hampshire GU14 0FB.

For customers in Ireland If you would like to find out more information, visit <http://www.bmw.ie/en/topics/owners/for-owners/bmw-financial-services.html> Here, you will also find details of our comprehensive range of products and current offers engineered for every eventuality. Finance is subject to status and available to over 18s in the IE only. Guarantees and indemnities may be required. Finance is provided by BMW Financial Services (Ireland) Limited, Swift Square, Santry Demesne, Santry, D09 R802, Dublin, Ireland.

¹ Service Inclusive and Service Inclusive Plus are available as cost options. Terms and conditions apply, for full details speak to your retailer or visit www.bmw.co.uk/serviceinclusive

² For further information, please contact your local BMW Retailer.

SHAPING THE FUTURE – RESPONSIBLY.



In 2015, the BMW Group was once again listed in the Dow Jones Sustainability World and Europe Indices and thus ranked one of the most sustainable automotive companies worldwide. The development of efficient vehicle concepts and eco-friendly production processes, up to and including recycling, is an integral part of our engineering philosophy. Thanks to BMW EfficientDynamics, the CO₂ emissions of our European new-vehicle fleet have dropped by more than 30% since 1995. Over the period from 2006 to 2020 we are also aiming to achieve a 45% reduction in the amount of resources – such as water and energy – that our manufacturing operations consume. Since 2007, production in our engine plant in Steyr, Austria, has generated zero waste water. And of course each of our vehicles is designed for easy and economical recycling after its long running life. Please contact your BMW Centre on all matters regarding your end-of-life vehicle. For further information please visit our website.

www.bmw.co.uk/EfficientDynamics
www.bmwgroup.com/responsibility
www.bmw.com/recycling

The BMW M5



The Ultimate
Driving Machine

This brochure describes the models, features and configuration options (standard and optional) available in vehicles delivered by BMW AG for the German market. In other EU countries, there may be deviations from the features and configuration options described in terms of the standard and optional equipment of the individual models. To find out more about the different country versions on offer, please consult your local BMW Retailer. Design and equipment subject to change. Part number: 95 38 1 004 024. November 2016.

© BMW AG, Munich, Germany. No reproduction in whole or in part without the written approval of BMW AG, Munich.

4 11 005 223 21 2 2016 BM. Printed in Germany 2016.