



13 BUICK  
LACROSSE



BUICK





“THE MORE SOPHISTICATED, ENGAGING BUICK LACROSSE IS ESSENTIALLY WHAT STARTED BUICK’S RESURGENCE IN EARNEST...”

– [thecarconnection.com](http://thecarconnection.com)

# THE LUXURY SEDAN THAT’S TUNED TO YOUR SENSES.

It requires a vision to develop a luxury car that stands out from the rest and makes a more personal connection with its driver. Buick’s integrated team of designers, engineers and craftsmen started by focusing on the sensations they wanted people to experience when they drive a car. They then executed this vision for LaCrosse through a comprehensive development effort that spanned three continents – its appeal to your senses is equally comprehensive. You’ll appreciate the visual cues of this expressive form of luxury, with a sculpted and refined design, complemented by rich detailing and exquisite craftsmanship. You’ll feel enthusiasm for LaCrosse’s brand of efficient performance that includes a 2.4L ECOTEC® engine with fuel-saving eAssist™ technology. And while LaCrosse’s interior is astonishingly quiet, you’ll also appreciate what you do hear – the sound reproduction quality, complemented by the interactive functionality of the IntelliLink™\* radio. A form of luxury driving that inspires all your senses. The 2013 Buick LaCrosse.

\* Full functionality requires compatible Bluetooth® and smartphone. Some devices require USB connectivity.



"WITH eASSIST, BUICK HAS DONE AN ADMIRABLE JOB OF  
CREATING A GREEN CAR WITH MINIMAL COMPROMISE."

— autoweek.com

# FUEL-EFFICIENCY TECHNOLOGY THAT'S SO ADVANCED, IT HAS ITS OWN NAME.

Performance and fuel efficiency are often viewed as contradictory goals. LaCrosse offers two solutions, enabling you to match the technology to your preferences. The standard eAssist™ system emphasizes fuel efficiency with a direct-injected 2.4L ECOTEC® four-cylinder engine, coupled with a six-speed automatic transmission. The eAssist™ system then adds a 115V lithium-ion battery, a 15-kW motor-generator, regenerative braking and other features that help enhance fuel efficiency – including

an air shutter system that enhances aerodynamics at highway speeds. Electric power actually adds to the engine's output, while also taking over to save gas when decelerating or idling. An ECO gauge continuously responds to your driving behaviour, helping you optimize fuel efficiency. The numbers prove the effectiveness of this technology: LaCrosse equipped with eAssist™ earned a 5.4 L/100 km highway and 8.3 L/100 km city ratings.\* An intelligent approach to fuel efficiency: eAssist™.



Every LaCrosse equipped with eAssist™ includes a Power Flow Gauge that displays an animation of the system's energy flow, revealing the current operating status. The gauge also displays the high voltage battery charge level. A separate analogue ECO driver efficiency gauge assists the driver in further improving efficiency.

\* 2013 Buick LaCrosse equipped with standard 2.4L ECOTEC® 1.4 engine with eAssist™. Fuel consumption ratings based on GM testing in accordance with approved Transport Canada test methods. Your actual fuel consumption may vary.





## A MATTER OF BALANCE.

No one needs to tell Canadians how inclement weather can adversely affect driving conditions. LaCrosse answers with an available Haldex All-Wheel-Drive (AWD) system that includes an electronic limited-slip differential that delivers even more sure-footed performance. When sensors detect wheelspin, the system responds automatically, redirecting power to the wheel or wheels with the most grip. This highly sophisticated system can send up to 50 percent of engine torque to either front wheel and up to

85 percent to either rear wheel. And by delivering torque to all four wheels, the system helps optimize acceleration, as well as all-weather traction. The AWD model is powered by the 303 horsepower 3.6L DOHC V6 that incorporates fuel-saving direct injection and Variable Valve Timing (VVT) technologies – the engine is paired with an electronically controlled six-speed automatic transmission, for optimal fuel efficiency and performance. AWD and the 3.6L DOHC V6: A very well balanced combination.



# QUIETLY INTELLIGENT.

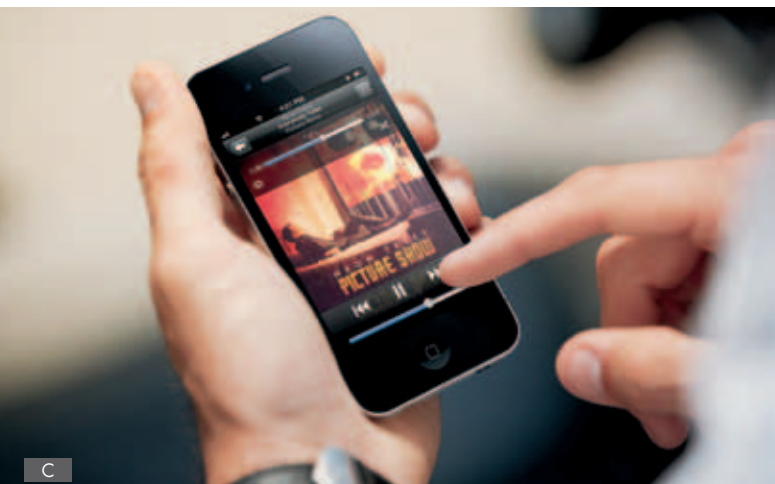
Buick's global design teams configured the driver's environment in LaCrosse to create a more fulfilling experience. For starters, the cabin is a sanctuary, with a spaciousness that's reflective of LaCrosse's full-size interior. The character of the space is defined by another sense: the remarkable level of quiet achieved by a series of Buick-exclusive QuietTuning® features that help reduce, block and absorb noise for a library-quiet ride. Your ears are in for another treat when you talk to the Buick IntelliLink™ radio, with its voice-activated technology and a series of easy-to-use, interactive functions. The comfort is also exceptional, with available heated and ventilated front bucket seats with perforated leather appointments – there's even an available heated wood and leather-wrapped steering wheel. Very thoughtful touches, which should come as no surprise in an interior as intelligently designed and equipped as that of LaCrosse.

"SITTING INSIDE THE LACROSSE AT SPEED PROVIDES A REMARKABLY SERENE ENVIRONMENT. WIND NOISE WAS VIRTUALLY NONEXISTENT AND CARRYING ON CONVERSATIONS WITH 'INSIDE VOICES' ALLOWED US TO HEAR AND BE HEARD WITH EASE."

– [autoblog.com](http://autoblog.com)



# URNS LISTENING INTO A DIALOGUE.



- A Buick IntelliLink™\* enables you to control your smartphone using the standard Bluetooth® hands-free connectivity.
- B You can adjust Bluetooth®, IntelliLink™\* audio system and cruise control functions using the standard steering wheel-mounted controls.
- C IntelliLink™\* also allows you to stream music wirelessly directly from your smartphone and from your iPod® or other MP3 player.
- D The available rear-seat DVD entertainment system features dual rear seatback-mounted fold-up LCD screens, each with independent playback capability, plus wireless headphones and a USB port.\*\*

Your taste in music is as sophisticated and personal as your taste in automobiles. Buick makes it possible to satisfy both these prerequisites with IntelliLink™.\* It employs the latest in voice-activated technology, enabling you to select the source of music or programming you want with simple voice commands. That means you can access everything from the music stored on your smartphone to the vast array of music, news, comedy and sports offerings through the standard XM Satellite Radio™†. The system features a backlit, high-resolution LCD touch screen that connects to your smartphone with standard Bluetooth® hands-free connectivity. Also included is a standard USB port\*\* that enables you to plug in a range of media devices. Better yet, the system is remarkably simple and intuitive to operate – and your system can be configured around the way you use it right at your dealership. For the ultimate in musical inspiration, opt for the available Harman Kardon® 384-Watt 11-speaker premium 5.1 Matrix surround audio system. Once you've heard the sound inside LaCrosse, you won't stop talking about it.

\* Full functionality requires compatible Bluetooth® and smartphone. Some devices require USB connectivity.

\*\* Not compatible with all devices.

† Available in 10 Canadian provinces and the 48 contiguous United States. Subscription sold separately after trial period. Visit xmradio.ca for details.



LaCrosse's cabin sets the tone for your driving, with an artful combination of flowing design, premium materials, technology and craftsmanship. These elements fuse together to create a vivid personality with a distinct Buick feel. You can personalize the look of the cabin, choosing between Ebony, Cashmere or Titanium interior trim – each with its own unique presence. Continuing on the colour theme, standard ambient lighting adds a calming ice-blue glow to the cabin, while also making features like door handles and cargo bins easier to find at night. Available perforated leather-appointed seating surfaces

offer a luxurious touch, while its highly breathable material provides a functional benefit. A standard power eight-way driver's seat adjuster adds to the comfort. Upon closer examination, you'll notice details like the French stitch seams on the available leather seating and other examples of LaCrosse's exemplary fit and finish. That represents yet one more expression of Buick's world-class quality standard. In a cabin with built-in sensory appeal.



A



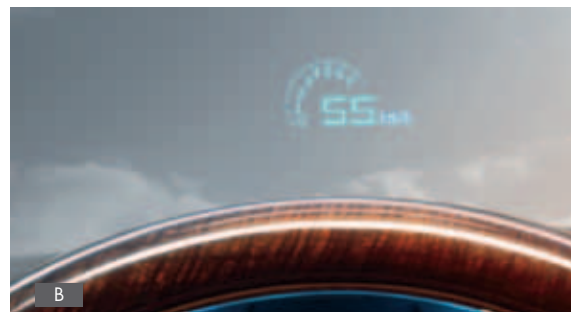
B

LaCrosse is available in three interior trim colours: Titanium is shown in the main photo to the right; Cashmere is shown in photo A; and Ebony in photo B above.



IT'S ALL IN THE DETAILS.





LaCrosse establishes a very high standard on safety fundamentals, as proven by the fact it has received a Five-Star Overall Vehicle Score\* – the highest possible overall vehicle score for safety from the U.S. National Highway Traffic Safety Administration (NHTSA), in addition to a 2012 Insurance Institute for Highway Safety (IIHS) Top Safety Pick.\*\* Standard safety features include the StabiliTrak® electronic stability control system, full-function traction control and four-wheel anti-lock brakes. Available advanced technological features further enhance your feeling of confidence behind the wheel – including ultrasonic rear parking assist, a rear vision camera, Side Blind Zone Alert† and Head-Up Display (HUD) instrumentation. Because there’s no such thing as too much peace of mind.

\* U.S. Government 5-Star Safety Ratings are part of the National Highway Traffic Safety Administration’s (NHTSA’s) New Car Assessment Program (www.SaferCar.gov). \*\* For more information, visit iihs.org/ratings.  
† Before making a lane change, always check the Side Blind Zone Alert display, check exterior and interior rear-view mirrors, look over your shoulder for vehicles/hazards and start the turn signal.

- A The available rear vision camera system helps you see objects that may otherwise be obscured behind your LaCrosse when in reverse.
- B The available Head-Up Display (HUD) instrumentation projects information such as vehicle speed, exterior temperature and radio selections on the windshield, so you can maintain your full attention on the road ahead.
- C The available Side Blind Zone Alert† employs radar technology to scan an arc on both sides of the vehicle. When another vehicle enters either of these zones, it triggers an LED symbol alert in the appropriate exterior rear-view mirror.

# ONSTAR® – A CLEAR DIFFERENCE MAKER.



How can one system do so much to enhance the safety, security and convenience of your driving? Read the long list of benefits that accompany OnStar® and you'll discover why so many people have adopted this important innovation in technology. OnStar® is standard on every Buick model, along with six months of the Directions and Connections Plan featuring Turn-by-Turn Navigation<sup>2</sup> and the OnStar RemoteliNK™ mobile app.<sup>3</sup>

### Automatic Crash Response

In most collisions, on-board sensors automatically alert OnStar® that you've been hit. You don't have to do a thing. A specially trained Emergency Advisor is immediately connected to your vehicle. If you request help, or can't answer, emergency responders are sent to your precise GPS location. Advisors monitor the OnStar® network 24 hours a day, so there's always someone there to help when you need it most.

### Emergency Services

When you need help, just push the Emergency OnStar® button for a priority connection to a specially trained Advisor.

### Crisis Assist

During a natural or man-made crisis, OnStar® Advisors can contact emergency responders on your behalf, provide directions to help you get out of harm's way, locate a nearby hotel and help you connect with loved ones – at no extra charge.

### Stolen Vehicle Assistance

If your vehicle is stolen, OnStar® works with police to attempt to recover it – swiftly and safely.

### Roadside Assistance

If you find yourself stranded, you're never alone: with one push of the OnStar® button, Roadside Assistance can be on the way. An Advisor will contact a nearby dealership, towing service or gas station and send them to your precise location.

### myBUICK app

Now Buick offers another aspect to its premium driving experience: a sophisticated complimentary app for your new LaCrosse. It provides access to a series of useful features – right from your iPhone® or Android™ smartphone.<sup>5</sup> That means you can perform functions like checking parking reminders or review a mobile Owner's Manual more conveniently anytime. The app also works with the OnStar RemoteliNK™<sup>3</sup> mobile app to lock or

### Remote Services

If you lock your keys in your car, OnStar® Remote Door Unlock can get you back in your vehicle in minutes. Call OnStar® and an Advisor will confirm your account information and security verification, and then can send a signal to unlock your doors. No locksmith. No hassle.

### Turn-by-Turn Navigation

From the places you need to find, to places you haven't thought of yet, OnStar® Turn-by-Turn Navigation<sup>2</sup> connects you to your destination effortlessly. Just push a button for an Advisor to help you get anywhere. And, with OnStar®, you'll have the most up-to-date routes right at your fingertips.

### Hands-Free Calling

Eyes on the road, hands on the wheel – OnStar®'s Hands-Free Calling<sup>4</sup> keeps you connected. This built-in feature makes it easy to take full advantage of OnStar®'s robust network. Even in places where handheld cell phones are banned while driving, OnStar® enables you to call hands-free by purchasing minutes for Hands-Free Calling.

### OnStar RemoteliNK™ mobile app

The OnStar RemoteliNK™ mobile app<sup>3</sup> places the power of OnStar® in the palm of your hand. It gives you an amazing level of control and connection with your vehicle through your mobile device. It lets you access real-time vehicle data, like oil-life and tire pressure. With RemoteliNK™ you can lock and unlock doors or contact an OnStar® Advisor all from your smartphone. If you're a Subscriber with Directions and Connections, you can also find a location with OnStar RemoteliNK™ and send directions right to your vehicle.<sup>4</sup>

### Vehicle Diagnostics

Every month, OnStar® automatically runs numerous diagnostic and maintenance checks on your vehicle's key operating systems, such as the engine, airbags and brakes. OnStar® Vehicle Diagnostics then sends you monthly email reports showing what's going on with your vehicle.

unlock your doors – even remotely start your vehicle (when factory equipped) right from your smartphone anywhere you have cell coverage. You can also check up on the status of vehicle systems, such as fuel level and remaining oil life. In addition, you can select a destination and have directions sent right to your vehicle. Another way of connecting with your vehicle: the myBuick app.

1. Visit onstar.ca for coverage map, details and system limitations. Services vary by model and conditions. OnStar® acts as a link to existing emergency service providers.  
2. Requires OnStar® Directions & Connections Plan. Not available in certain areas. See coverage map for details.

3. Available on select iPhone®, Android™ and BlackBerry® (interim availability) devices. Services vary by phone, vehicle and conditions. Requires an active OnStar® subscription.  
4. Requires an active OnStar® subscription.  
5. Requires iPhone® or Android™ platform and active OnStar® subscription.



# LACROSSE STANDARD FEATURES & OPTIONAL EQUIPMENT

## SAFETY AND SECURITY

|   |
|---|
| <b>Airbags</b>  |
| – driver and front-passenger, dual-stage, frontal with passenger detecting system and airbag suppression  |
| – driver and front-passenger, seat-mounted, side-impact   |
| – front-to-rear, side head curtain  |
| <b>Locks</b> – rear doors, child-security, electronic   |
| <b>OnStar®</b> – In-Vehicle Communications and Assistance Service includes 6 months of the Directions & Connections Plan with Turn-by-Turn Navigation* and OnStar RemoteLink™ |
| <b>Safety restraints</b>  |
| – 3-point belts for all seating positions, front safety belt pre-tensioners, dual-mode retractors and shoulder belt height adjusters  |
| – LATCH (Lower Anchors and top Tethers for Children), rear seats  |
| <b>Security system</b> – audible/visible, content theft alarm   |
| <b>StabiliTrak®</b> – electronic stability control system   |
| <b>Theft-deterrent system</b> – electronic immobilizer  |
| <b>Traction control</b> – electronic, full-function, all-speed  |

## MECHANICAL

|   |
|---|
| <b>Battery</b> – with run-down protection   |
| <b>Brakes</b>   |
| – power, 4-wheel disc   |
| – 4-wheel Anti-lock Braking System (ABS) with intelligent brake assist                                  |
| <b>Drive</b> – front-wheel  |
| <b>Engine</b>   |
| – 2.4L ECOTEC® I-4 with VVT, Direct Injection and eAssist™ (includes 115-volt lithium-ion battery pack) |
| Horsepower – 182 @ 6700 rpm; Torque – 172 lb.-ft. @ 4900 rpm  |
| <b>Exhaust system</b>   |
| – aluminized stainless steel  |
| – single hidden outlet  |
| <b>Steering</b> – power, electric, rack-and-pinion  |
| <b>Suspension</b> – 4-wheel independent, 4-link rear  |
| <b>Transmission</b> – 6-speed automatic with overdrive and Driver Shift Control                         |
| <b>Vehicle starter system</b> – remote  |

## INTERIOR

|  |
|--|
| <b>Cargo convenience net</b>   |
| <b>Climate control</b>   |
| – automatic, dual-zone with humidity sensor and auto defog activation  |
| – air filtration system, particulate, pollen and odour filter  |
| – rear seat heating and cooling outlets  |
| <b>Console</b> – front floor with armrest, storage compartment and dual cupholders   |
| <b>Cruise control</b>  |
| <b>Floor mats</b> – front and rear, carpeted   |
| <b>Instrumentation</b>   |
| – analogue cluster (includes speedometer, tachometer, ECO driver efficiency and fuel gauges)   |
| – Driver Information Centre, multi-colour display includes trip odometer, fuel range, average fuel consumption and instantaneous fuel consumption, average vehicle speed, exterior temperature display, GM Oil Life Monitoring System, compass and programmable features |
| – tire pressure monitoring system  |
| <b>Lighting</b>  |
| – courtesy with delayed entry/exit, theatre dimming, front and rear reading lights, glovebox, trunk and puddle lights  |
| – ice-blue ambient lighting on front and rear doors, console, instrument panel light pipe and front footwells  |
| <b>Locks</b>   |
| – power, programmable with lock-out protection   |
| – remote keyless entry system, includes panic alarm  |
| <b>Mirror</b> – rear-view with OnStar® controls  |
| <b>Power outlets</b> – 12-volt auxiliary, two  |
| <b>Retained accessory power</b>  |
| <b>Steering column</b> – tilt and telescopic adjustable  |
| <b>Steering wheel</b> – leather-wrapped with Bluetooth®, cruise and audio system controls, includes leather-wrapped shifter  |
| <b>Sunshades</b> – LH and RH padded; sliding extendable with illuminated vanity mirrors  |
| <b>Trunk</b> – release, power remote   |
| <b>Windows</b> – power, driver and front-passenger express-up/down, rear passenger express-down and passenger window lock-out features   |

## EXTERIOR

|   |
|---|
| <b>Aero Package</b> – lower front grille with active air shutters (eAssist™ only) |
| <b>Glass</b>  |
| – Solar-Ray, tinted   |
| – acoustic laminated windshield and front doors                                   |

## EXTERIOR (CONTINUED)

|   |
|---|
| <b>Lights</b>   |
| – halogen headlights  |
| – daytime running lights with automatic light control and Twilight Sentinel®      |
| <b>Mirrors</b> – power remote control, heated                                     |
| <b>Mouldings</b> – rocker, body-colour with chrome insert                         |
| <b>Spoiler</b> – rear, deck-lid, flush mounted (not included with V6 engine)      |
| <b>Tires</b>  |
| – P235/50R17 all-season**   |
| – inflator kit  |
| <b>Wheels</b> – 17" x 7" machined aluminum (A)                                    |
| <b>Windshield wipers</b> – flat blade, 2-speed with variable delay (intermittent) |

## SEATING

|  |
|--|
| <b>Reclining front bucket seats</b> – cloth seating surfaces, seatback map pockets and outboard adjustable head restraints |
| <b>Driver seat</b> – power 8-way adjuster with power 4-way lumbar adjuster   |
| <b>Front passenger seat</b> – manual 4-way with power height adjuster  |
| <b>Seatbacks</b> – rear, 60/40 split-folding with centre armrest dual cupholders   |

## ENTERTAINMENT

|   |
|---|
| LaCrosse audio systems include an electronically tuned AM/FM stereo with CD player, MP3 playback capability, 8" colour touch-screen display, seek, auto tone control, speed-compensated volume control and auxiliary audio input jack |
| <b>Buick IntelliLink™1</b> – includes voice-activated technology for audio, phone, phonebook and music selection, Stitcher SmartRadio™ and album art powered by Gracenote®  |
| <b>7-speaker audio system</b>   |
| <b>XM Satellite Radio™2</b>   |
| <b>Bluetooth®</b>   |
| – hands-free phone connectivity   |
| – wireless audio connectivity   |
| <b>USB port<sup>2</sup></b> – input jack for iPod® or other MP3 player or mass media device, located inside centre console  |

## AVAILABLE EQUIPMENT GROUPS

❶ **LUXURY GROUP (1SL)** Includes all standard features plus the following:

|   |
|---|
| <b>Fog lights</b>   |
| <b>Memory package</b> – driver seat and exterior mirrors  |
| <b>Mirrors</b>  |
| – exterior, power remote control, body-colour, heated with integrated turn signal puddle lamps and driver side auto-dimming feature |
| – interior, rear-view with auto-dimming feature and OnStar® controls  |
| <b>Rear parking assist</b> – ultrasonic audible rear obstacle detection   |
| <b>Rear vision camera</b>   |
| <b>Seating</b>  |
| – reclining front bucket seats with heated leather-appointed seating surfaces   |
| – front-passenger seat – power 8-way adjuster   |
| <b>Universal home remote</b> – 3-channel programmable transmitter   |

❷ **LUXURY GROUP WITH DRIVER CONFIDENCE (1SH)** Includes Group ❶ plus the following:

|   |
|---|
| <b>Head-Up Display (HUD)</b>                                    |
| <b>Headlights</b> – Bi-Xenon High-Intensity Discharge, adaptive |
| <b>Side Blind Zone Alert</b>                                    |

❸ **AWD LUXURY GROUP (1SP)** Includes all standard features plus the following:

|   |
|---|
| <b>Differential</b> – limited slip, rear  |
| <b>Drive</b> – Haldex intelligent All-Wheel-Drive system (AWD), electronically controlled   |
| <b>Engine</b>   |
| – 3.6L V6 with VVT and Direct Injection, E85 FlexFuel capable   |
| Horsepower – 303 @ 6800 rpm; Torque – 264 lb.-ft. @ 5300 rpm <sup>3</sup>   |
| <b>Exhaust</b> – dual styled tips   |
| <b>Instrumentation</b> – analogue cluster (includes speedometer, tachometer, engine coolant temperature and fuel gauges)              |
| <b>Memory package</b> – driver seat and exterior mirrors  |
| <b>Mirrors</b>  |
| – exterior, power remote control, body-coloured, heated with integrated turn signal puddle lamps and driver side auto-dimming feature |
| – interior, rear-view with auto-dimming feature and OnStar® controls  |

|   |
|---|
| <b>Seating</b>  |
| – reclining front bucket seats with heated leather-appointed seating surfaces |
| – front-passenger seat – power 8-way adjuster                                 |

**Steering** – power, variable-assisted hydraulic, rack-and-pinion

|   |
|---|
| <b>Tires</b>                            |
| – P235/50R18 all-season**               |
| – compact spare (replaces inflator kit) |

**Wheels** – 18" x 8" machined-face aluminum, painted (B)

## AVAILABLE EQUIPMENT GROUPS (CONTINUED)

❹ **AWD LUXURY GROUP WITH DRIVER CONFIDENCE (1SN)** Includes Group ❸ plus the following:

|   |
|---|
| <b>Head-Up Display (HUD)</b>                                    |
| <b>Headlights</b> – Bi-Xenon High-Intensity Discharge, adaptive |
| <b>Side Blind Zone Alert</b>                                    |

❺ **ULTRA LUXURY GROUP WITH DRIVER CONFIDENCE (1SR)** Includes Group ❹ plus the following:

|   |
|---|
| <b>E-Z Key</b> – keyless access system with push button start, door lock/unlock passive entry and trunk unlock with separate trunk release button   |
| <b>Engine</b>   |
| – 3.6L V6 with VVT and Direct Injection, E85 FlexFuel capable   |
| Horsepower – 303 @ 6800 rpm; Torque – 264 lb.-ft. @ 5300 rpm  |
| <b>Entertainment</b>  |
| – Buick IntelliLink™ with Navigation System†† – includes voice-activated technology for audio, phone, phonebook and music selection, Stitcher SmartRadio™ and album art powered by Gracenote® |
| – Harman Kardon® 11-speaker 384-Watt 5.1 Matrix surround audio system   |
| <b>Exhaust</b> – dual bright tips   |
| <b>Power centre</b> – 3-prong 120-volt household power outlet   |
| <b>Seating</b> – heated and ventilated reclining front bucket seats with perforated leather-appointed seating surfaces  |
| <b>Steering wheel</b> – heated, leather-wrapped with wood inserts   |
| <b>Sunshade</b> – power, rear window  |
| <b>Suspension</b> – HiPer Strut front, 4-link rear  |
| <b>Tires</b> – P235/50R18 all-season tires**  |
| <b>Wheels</b> – 18" x 8" chrome-plated (C)  |

❻ **ULTRA LUXURY TOURING (1ST)** Includes Group ❺ plus the following:

|   |
|---|
| <b>Suspension</b>   |
| – rear H-arm  |
| – continuously variable real-time damping with Sport mode selectivity |
| <b>Tires</b> – P245/40R19 all-season tires**                          |
| <b>Wheels</b> – 19" x 8" 9-spoke machined aluminum, painted (D)       |

| AVAILABLE FEATURES   | Available with         |
|--|------------------------|
| <b>Airbags</b> – rear passenger, outboard seating positions, seat-mounted, side-impact   | All                    |
| <b>Engine</b>  |                        |
| – 3.6L V6 with VVT and Direct Injection, E85 FlexFuel capable  |                        |
| Horsepower – 303 @ 6800 rpm; Torque – 264 lb.-ft. @ 5300 rpm <sup>3</sup>  | Base, Group ❶, ❷       |
| <b>Engine</b> – block heater   | All                    |
| <b>Entertainment</b>   |                        |
| – Buick IntelliLink™ with Navigation system†† – includes AM/FM stereo with CD/DVD player, 11-speaker Harman Kardon® 384-Watt 5.1 Matrix surround audio system and 3-prong 120-volt AC household power outlet | Group ❶, ❷, ❸ and ❹    |
| – Buick IntelliLink™ with Navigation system†† and rear seat DVD includes the above and two seatback-mounted LCD screens and two wireless headsets <sup>4</sup>   | Group ❶, ❷, ❸, ❹ and ❺ |
| – Harman Kardon® 11-speaker 384-Watt 5.1 Matrix surround audio system  | Group ❶, ❷, ❸ and ❹    |
| <b>Sunroof</b> – oversize, power, sliding glass panel with express-open feature  | Group ❶, ❷, ❸, ❹ and ❺ |
| <b>Wheels</b> – 18" x 8" chrome-plated aluminum (C) <sup>5</sup>   | Group ❶, ❷, ❸ and ❹    |

S – Standard, O – Optional individually or in combination with other optional equipment.

1 – Full functionality requires compatible Bluetooth® and smartphone. Some devices require USB connectivity.

2 – Not compatible with all devices.

3 – Ordering the available 3.6L V6 engine makes the following changes and revisions:

**Base and Groups ❶ and ❷**

Deletes eAssist™ technology, active air shutters and rear deck-lid spoiler, replaces single hidden exhaust outlet with dual styled exhaust outlet, replaces ECO driver efficiency gauge on instrument panel with engine coolant temperature gauge.

**Base**

Replaces P235/50R17 all-season\*\* tires with P245/50R17 all-season\*\* tires.

**Groups ❶ and ❷**

Replaces 17" x 7" machined aluminum wheels with 18" x 8" machined-face painted aluminum wheels (B). Replaces P235/50R17 all-season\*\* tires with P235/50R18 all-season\*\* tires.

4 – Includes only seatback-mounted LCD screens and headphones when ordered with Groups ❸ or ❹. All other features are included with Groups ❸ and ❹.

5 – Includes P235/50R18 all-season tires\*\* Requires available V6 engine on Groups ❶ and ❷.

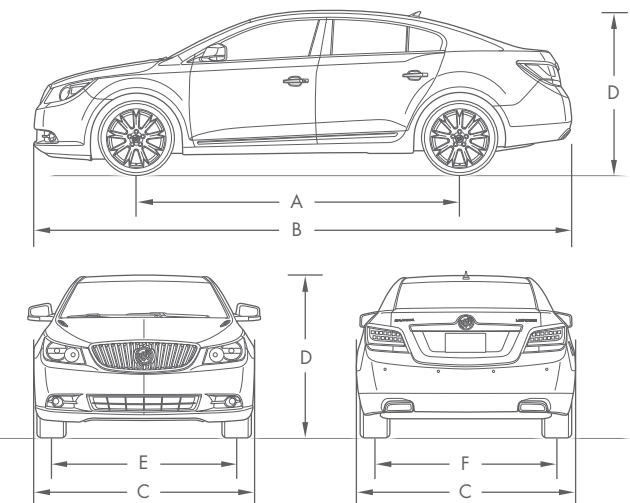
† Visit onstar.ca for coverage map, details and system limitations. Services vary by model and conditions.

\*\* All-season tires may not satisfy winter tire requirements in all regions of the country. Tires specifically designed for severe winter conditions and marked with the "winter tire" symbol ❄️ may be required during certain months or in certain regions. Contact your Provincial, Municipal or local road authority for information regarding which tires are required in your particular area.

† Available in 10 Canadian provinces and the 48 contiguous United States. Subscription sold separately after trial period. Visit xmradio.ca for details.

†† At time of printing, detailed map coverage is available for most major urban areas of the United States and for certain metropolitan areas of Canada (Vancouver, Calgary, Edmonton, Winnipeg, Windsor, London, Toronto, Ottawa, Montreal, Quebec City and Halifax). Coverage is significantly limited outside those areas.

# DIMENSIONS



| EXTERIOR, mm (in.)     |              |
|------------------------|--------------|
| <b>Wheelbase (A)</b>   | 2837 (111.7) |
| <b>Length (B)</b>      | 5000 (196.8) |
| <b>Width (C)</b>       | 1857 (73.1)  |
| <b>Height (D)</b>      | 1503 (59.2)  |
| <b>Front tread (E)</b> | 1567 (61.7)  |
| <b>Rear tread (F)</b>  | 1575 (62.0)  |

## INTERIOR, mm (in.) front/rear

|                      |                       |
|----------------------|-----------------------|
| <b>Headroom</b>      | 965/947 (38.0/37.3)   |
| <b>Legroom</b>       | 1058/1029 (41.7/40.5) |
| <b>Shoulder room</b> | 1459/1423 (57.4/56.0) |
| <b>Hip room</b>      | 1402/1369 (55.2/53.9) |

## CAPACITIES/WEIGHT

|                                     |             |
|-------------------------------------|-------------|
| <b>Trunk, L (cu. ft.)</b>           |             |
| – LaCrosse Group ❶, ❷ (w/eAssist™)  | 323 (11.4)  |
| – LaCrosse Group ❶, ❷ (w/V6 engine) | 377 (13.3)  |
| – LaCrosse Group ❸, ❹               | 377 (13.3)  |
| – LaCrosse Group ❺, ❻               | 363 (12.8)  |
| <b>Fuel tank, L (imp. gal.)</b>     |             |
| – LaCrosse Group ❶, ❷ (w/eAssist™)  | 59.4 (13.1) |
| – LaCrosse Group ❶, ❷ (w/V6 engine) | 69.6 (15.3) |
| – LaCrosse Group ❸, ❹               | 73.8 (16.2) |
| – LaCrosse Group ❺, ❻               | 69.6 (15.3) |
| <b>Curb weight (est.), kg (lb.)</b> |             |
| – LaCrosse Group ❶, ❷ (w/eAssist™)  | 1704 (3749) |
| – LaCrosse Group ❶, ❷ (w/V6 engine) | 1767 (3887) |
| – LaCrosse Group ❸, ❹               | 1877 (4129) |
| – LaCrosse Group ❺, ❻               | 1820 (4004) |

## TOWING

|   |
|---|
| 2.4L ECOTEC® I-4 DI VVT; 2.64 final drive ratio; not recommended                        |
| 3.6L V6 DI VVT; 2.77 final drive ratio; 454 kg (1000 lb.) Maximum gross trailer weight† |

† Includes weight of trailer, cargo, passengers and equipment. All towing recommendations are subject to change. Trailer tongue should be 10% of the maximum trailer weight but should not exceed the load rating specified for that vehicle, engine or hitch combination. See your dealer or refer to the LaCrosse Owner's Manual for details.



## OWNING A BUICK OFFERS ITS OWN REWARDS.

Buick continues to be a leader in quality. That reality is underscored by the fact every 2013 Buick is backed by a comprehensive suite of programs:

- 4-year/80,000 km New Vehicle Limited Warranty\*
- 6-year/110,000 km Powertrain Component Limited Warranty, with \$0 deductible on repairs and the warranty is fully transferable at no charge\*
- 6-year/110,000 km Courtesy Transportation\*
- 6-year/110,000 km 24/7 Roadside Assistance\*
- 6-year/160,000 km rust-through perforation coverage\*
- 8-year/130,000 km coverage on catalytic converters and powertrain control modules (PCMs)\*
- 8-year/160,000 km Limited Warranty on certain eAssist™ components\*

\* Whichever comes first. Conditions and limitations apply. See dealer for details.

### OTHER OWNERSHIP PRIVILEGES AND PROGRAMS:\*\*

- **GM Protection Plan (GMPP)** – the only extended service plan backed by the resources and commitment of General Motors; GMPP may be purchased at the time of your sale or subsequently during the New Vehicle Limited warranty period
- **GM Goodwrench Service** – with GM-certified technicians and GM-approved parts, nobody knows your GM vehicle better
- **Buick Owner Centre** – As an owner, take advantage of the Buick Owner Centre. This online owner's destination gives you access to coupons, contests, current offers and the latest driving and maintenance tips. Find out more at [BuickOwner.ca](http://BuickOwner.ca)

\*\* Conditions and limitations apply.

### TO HELP YOU PURCHASE OR LEASE YOUR NEW BUICK:

- **Purchase Financing and Leasing** – On-the-spot financing, see dealer for full details††
- **GM Student Bonus Program** – Students or recent graduates of high school, college or university\* may be entitled to receive a Student Bonus vehicle redemption allowance of \$500 or \$750† (tax inclusive) (purchased vehicle dependant) to use towards the purchase, lease or finance of one eligible new Buick vehicle
- **The GM Card** – GM cardholders may redeem up to \$3500 GM Card® Earnings (subject to Vehicle Redemption Allowances) toward the Total Purchase Price on eligible new GM vehicles.† For full program details please visit [thegmcard.ca](http://thegmcard.ca)

† Conditions and limitations apply. †† Subject to eligibility. † Program subject to change.

### INFORMATION RESOURCES:

You can find more information about these programs from your GM dealer, or at these information centres:

- The Buick website at [buick.ca](http://buick.ca)
- The GM Customer Care Centre at **1-800-GM-DRIVE (1-800-463-7483 or 1-800-263-3830** for TDD users).

### A WORD ABOUT THIS BROCHURE

Some of the equipment shown or described throughout this brochure may be available at extra cost. We have tried to make this brochure comprehensive and factual. We reserve the right, however, to make changes at any time, without notice, in prices, colours, materials, equipment, specifications, models and availability. Specifications, dimensions, measurements, ratings and other numbers in this brochure and other printed materials provided at the dealership or affixed to vehicles are approximates based upon design and engineering drawings and prototypes and laboratory tests. Your vehicle may differ due to variations in manufacture and equipment. Since some information may have been adapted since the time of printing, please check with your GM dealer for complete details. General Motors of Canada Limited reserves the right to lengthen or shorten the model year for any product, for any reason, or to start and end model years at different times.

### A WORD ABOUT ASSEMBLY

GM vehicles are equipped with engines and components produced and assembled by different operating units of General Motors, its subsidiaries and suppliers and these engines and components may change or be obtained from different sources from time to time. All such engines and components are approved for use in GM vehicles. Certain equipment ordered may be unavailable at the time of assembly and we suggest that you verify that your vehicle includes the equipment you ordered, or if there are changes, that they are acceptable to you.

### TRADEMARKS

The marks appearing in this brochure including, but not limited to: General Motors, GM, Buick, the Buick logo, LaCrosse, and their respective logos, emblems, slogans and vehicle model names and body designs; and other marks such as eAssist, ECOTEC, IntelliLink, QuietTuning, StabiliTrak and Twilight Sentinel are all trademarks of General Motors and/or General Motors of Canada Limited, its subsidiaries, affiliates or licensors. OnStar and the OnStar emblem are registered trademarks and OnStar RemoteLink is a trademark of OnStar, LLC. The XM name and related logos are trademarks of XM Canada, Canadian Satellite Radio Inc. Radio Data System (RDS) is a registered trademark of the U.S. National Association of Broadcasters. Bluetooth is a registered trademark of Bluetooth SIG Inc. Harman Kardon is a registered trademark of Harman International Industries, Incorporated. iPhone and iPod are trademarks of Apple Computer, Inc, registered in the U.S. and other countries. Android is a trademark of Google Inc. Stitcher is a registered trademark of Stitcher, Inc. Gracenote is a registered trademark of Sony Corporation of America.

### COPYRIGHT

©Copyright 2012 General Motors of Canada Limited. All Rights Reserved. All text, images, graphics, and other materials in this brochure are subject to the copyright and other intellectual property rights of General Motors and/or General Motors of Canada Limited. These materials may not be reproduced, distributed or modified without the express written permission of General Motors and/or General Motors of Canada Limited.

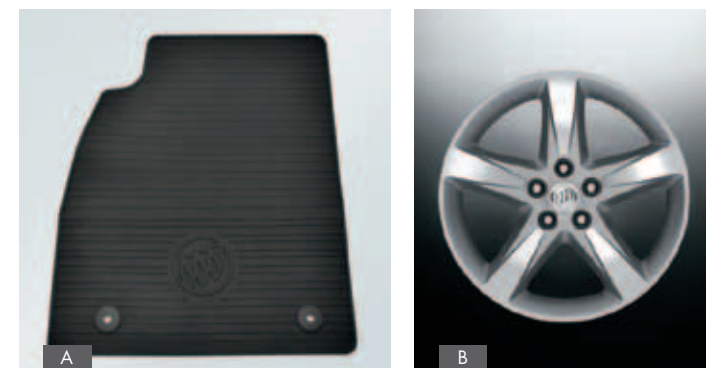
Printed in Canada, August 2012.

## ACCESSORIES

### ADD YOUR PERSONAL TOUCHES.

Buick invites you to make a highly personalized statement about who you are and what you drive, with the addition of available dealer-installed Buick Accessories. They uphold the same standards of quality evident in every other aspect of LaCrosse. And as an integral part of LaCrosse's development process, Buick Accessories ensure excellent fit, finish and functionality. And they are the only accessories backed by Buick's 4-year/80,000 km New Vehicle Limited Warranty.\* Ask your sales consultant for a complete list of Buick Accessories for LaCrosse, or visit [buick.ca](http://buick.ca)

\* Whichever comes first, when permanently installed by the dealer at the time you purchased your new vehicle, or for the remainder of the New Vehicle Limited Warranty if installed after the time of your vehicle purchase, but no less than 12 months.



A Front and rear premium all-weather floor mats feature deep-patterned grids to collect water, mud and snow.

B 19-in. polished 5-spoke aluminum wheels accentuate LaCrosse's sportiness.

C The cargo tray helps protect the trunk with its heavy-duty non-skid surface.



## EXTERIOR COLOURS



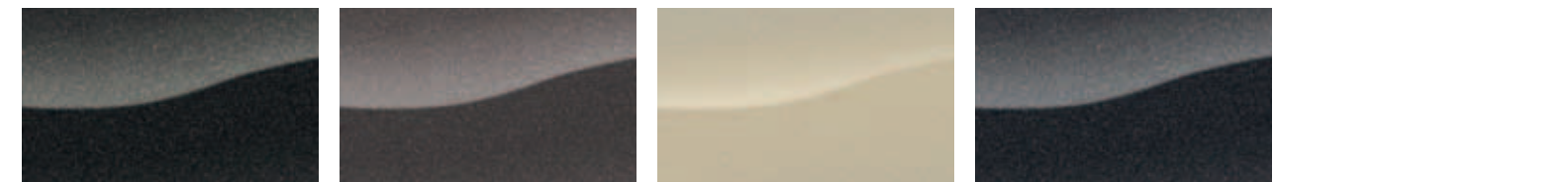
GAN – Quicksilver Metallic

GAR – Carbon Black Metallic\*

GAZ – Summit White

GBE – Crystal Red Tintcoat\*

GBN – White Diamond Tricoat\*



GGW – Storm Grey Metallic

GGU – Mocha Bronze Metallic

GWT – Champagne Silver Metallic

GWY – Atlantis Blue Metallic

\* Available at extra cost.

Due to limitations in the printing process, the colours shown may differ slightly from the actual colour. For more accurate colour samples, ask your sales consultant to see the dealer showroom vehicle colour display.

## EXTERIOR/INTERIOR COLOUR COMPATIBILITY

| EXTERIOR COLOURS                | Ebony <sup>1</sup> | INTERIOR FABRICS<br>Cashmere | Titanium |
|---------------------------------|--------------------|------------------------------|----------|
| GAN – Quicksilver Metallic      | •                  |                              | •        |
| GAR – Carbon Black Metallic*    | •                  | •                            | •        |
| GAZ – Summit White              | •                  | •                            | •        |
| GBE – Crystal Red Tintcoat*     | •                  | •                            | •        |
| GBN – White Diamond Tricoat*    | •                  | •                            | •        |
| GGW – Storm Grey Metallic       | •                  | •                            | •        |
| GGU – Mocha Bronze Metallic     | •                  | •                            | •        |
| GWT – Champagne Silver Metallic | •                  | •                            |          |
| GWY – Atlantis Blue Metallic    | •                  | •                            | •        |

\* Available at extra cost. <sup>1</sup> Not available on Base.

## INTERIOR FABRICS

### Custom Cloth



AFA – Cashmere



AFB – Titanium

### Leather\*



AFC – Cashmere

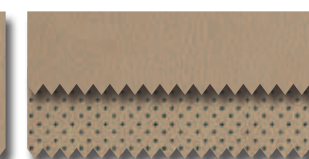


AFE – Titanium

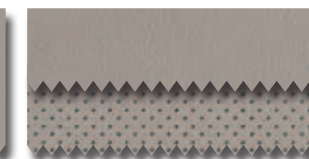


AFG – Ebony

### Perforated Leather\*\*



AFD – Cashmere



AFF – Titanium



AFH – Ebony

## WHEELS



A – 17" machined aluminum



B – 18" machined-faced aluminum, painted



C – 18" chrome-plated



D – 19" 9-spoke machined aluminum, painted

\* Available on Groups 1,2,3 and 4 only.

\*\* Available on Groups 5 and 6 only.





buick.ca



191-13-B-003E