

JEEP GRAND CHEROKEE 03



**04**

The Jeep® Experience

**06**

Grand Cherokee Overland

**12**

Grand Cherokee Limited

**16**

Grand Cherokee Laredo

**20**

Pick of the Pride

**22**

Specifications

**23**

Standard/Optional Features



The Jeep legend began in earnest with the Willys MB, a 4x4 so vital to the Allies' cause in World War II that General Dwight D. Eisenhower proclaimed that we could not have won the war without it.

**Brilliant Black Grand Cherokee Overland, Inca Gold Wrangler Rubicon and Cactus Green Liberty Renegade shown.**




In late 1941, the U.S. Army took delivery of the legendary Willys MB 4x4 — and military travel was revolutionized. After the war, the Willys CJ (the first civilian Jeep vehicle) began appearing on mountainsides across America, traveling via the “Jeep Trails” that

## The Jeep Brand: A Hero's Trail<sup>®</sup>

still dot many of the most remote landscapes. That noble capability lives on today in Jeep Grand Cherokee, Liberty and Wrangler. Each is built to travel a hero's trail — one forged over six decades ago and constantly evolving.






You've got the spirit. That get-out-and-get-going attitude. Every so often you need to escape. And because you're accommodating, you like taking family and friends along, too. (At least, once in a while.) That's the beauty of Jeep Grand Cherokee. With its powerful engines, proven four-wheel-drive

## Destination: Everywhere

systems and many interior amenities, it can rescue the important people in your life. Dull day-to-day driving is transformed as you accelerate toward the setting sun in complete comfort and with total confidence. Your Grand Cherokee puts you in command, making life just that much better for everyone you know.



**JEEP, JAMBOREES** — Every year, Jeep vehicle owners come together to share their enthusiasm for the unpaved, rarely traveled trail. Fun-filled Jeep Jamborees provide them with unprecedented opportunities to discover stunning backcountry, challenge their Grand Cherokee, Liberty and Wrangler 4x4s and meet friendly people who are as genuine as the Jeep Brand itself. To request a 2003 Jeep Jamboree Guidebook, call (800) 925-JEEP (starting December 2002).





Find out more about **CAMP JEEP** and **JEEP JAMBOREES** @ [jeep.com](http://jeep.com)

**CAMP JEEP**® – Perfect for families that love the outdoors as much as Jeep 4x4s. If you enjoy four-wheeling, mountain biking, free outdoor concerts, kids' activities, engineering roundtables, making new friends and more, Camp Jeep is the place. For more information, call (800) 789-JEEP.



Grand Cherokee Laredo shown in Steel Blue.



With its standard 17-inch Rogue Cast Aluminum wheels, painted rock rails and exclusive Overland badging, Grand Cherokee Overland (shown in Bright Silver) sits atop the Grand Cherokee model lineup.

Brilliant Black  
Crystal Pearl Coat



Graphite  
Metallic



Inferno Red  
Tinted Pearl Coat



Onyx Green  
Pearl Coat



Bright Silver  
Metallic





**A** Standard  
17x7.5-inch Rogue  
Cast Aluminum with  
Satin Silver finish.

**B** Optional  
17x7.5-inch Rogue  
Cast Aluminum,  
Chrome Clad.

You can't mistake it. Grand Cherokee Overland is every bit a purebred. From Overland's distinctive slotted grille to its painted rock rails, you know you're in for one heck of an adventure — with a little extra “oomph” thrown in. After all, appearances do count. Who doesn't like to look good crawling over boulders the size of Texas or towing your weekend watercraft?

## Overland: Superior Civility

*The Overland Exterior Distinction* • Exclusive Overland badging • Standard power sunroof • Rain-sensitive wiper system that takes the worry out of rain visibility • Dual power, foldaway, heated mirrors with driver's memory settings to help you see or stay out of the way • Rock rails for lower-body off-road protection

For additional Overland features and options, see page 23.



Grand Cherokee Overland's Jeep® Brand roots start with the name. It's derived from Willys-Overland, the company that delivered the legendary Willys MB to the U.S. Army.

Enjoy your day in the sun with Overland's standard power sunroof. One-button operation selects express-open or comfort-stop settings.

TIRE  
PSI 36 35  
23 36

The standard has been set with Overland's High-Output 4.7L Power Tech V8, which delivers 265 peak horsepower and 325 pound-feet of torque for incredible power and performance. And your go-anywhere attitude is unrivaled due to the advanced Quadra-Drive® four-wheel-drive system. Translation? Overland can take you to the top of the mountain. Right where you belong.

## Overland: Strength to Carry

*The Overland Power Distinction* • High-Output 4.7L Power Tech V8 engine • Five-speed fully electronic multirange automatic transmission with shifter-mounted overdrive lockout switch • Quadra-Drive 4WD system with Quadra-Trac II® transfer case and Vari-Lok® front and rear progressive locking axles • Up Country Suspension Group

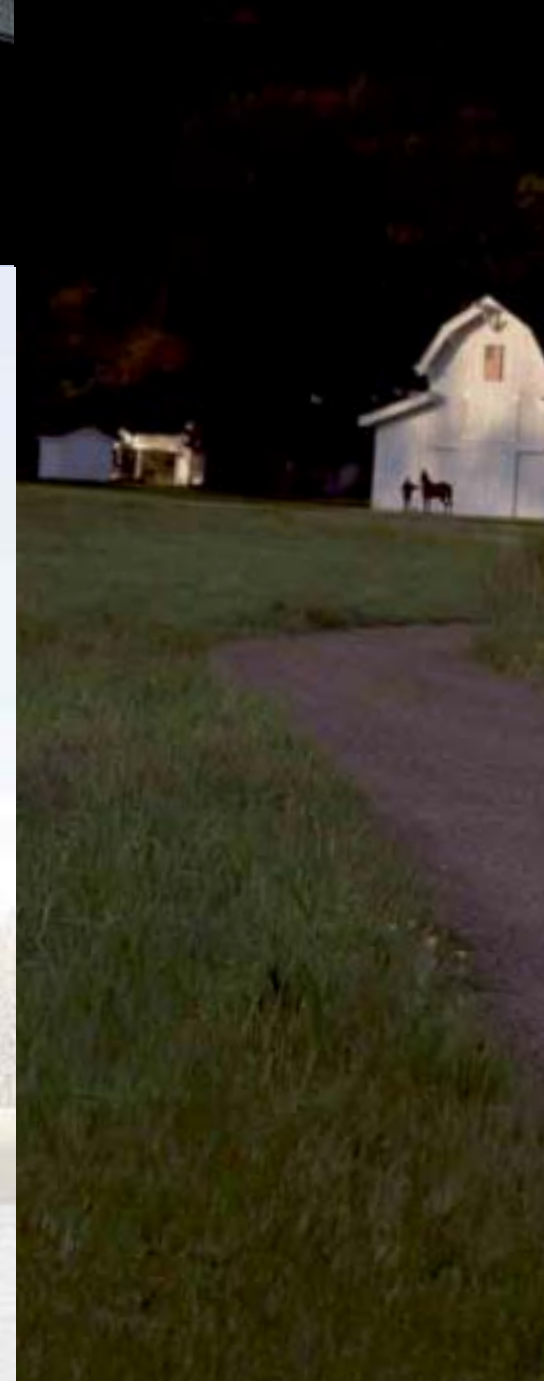
For additional Overland features and options, see page 23.

The definitive word in capability is a standard offering on Overland. With Quadra-Drive, the Jeep Brand's most advanced four-wheel-drive system ever, you enjoy rear-to-front and side-to-side torque transfer. This means you can keep Overland on the move, even when only one wheel has traction. Suddenly, your destinations are more numerous. Where will you go today?

### LOSS OF TRACTION



### TRANSFER OF POWER







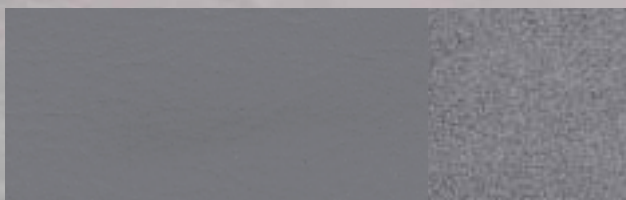
With a standard High-Output 4.7L Power Tech V8 engine and towing capacity of up to 6,500 pounds, Overland is built to perform. See Towing Data chart on page 22 for required towing equipment.

Grand Cherokee Overland shown in Onyx Green.



**Grand Cherokee Overland suede-trimmed leather seating shown in Light Slate Gray.**

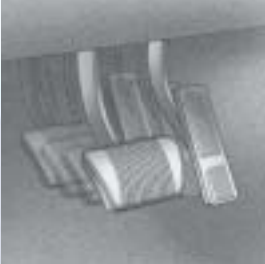
Royale Leather/Preferred Suede® Light Slate Gray



Redwood Burl Interior Trim



**Mopar's Navigational Radio is the perfect travel companion. This system provides a colorful electronic map, turn-by-turn directions and voice prompts to assist you in reaching your destination.**



In this sumptuous landscape, the fast-paced outer world is obliged to stand at bay. Melt into Overland's suede-trimmed leather seating, then rest your eyes on real Redwood Burl accents on the steering wheel and interior trim. Soothe yourself and your passengers with the Infrared Dual Zone Climate Control. The journey's just begun. Lucky you. (As if luck has anything to do with it.)

**Overland's available adjustable pedal system lets you customize the placement of the brake pedal and accelerator – adding to your driving safety and comfort.**

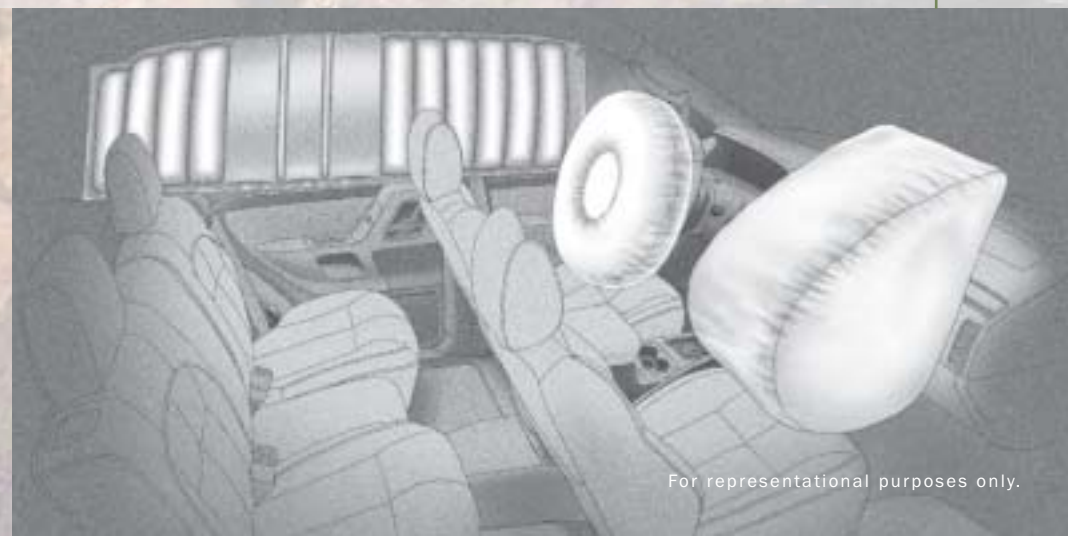
## Overland: Inner Grace

*The Overland Interior Distinction* • Exclusive suede-trimmed Royale Leather seats • Real Redwood Burl interior accents • Floor mats with embroidered logo • Power, heated, driver and front-passenger seats • Power sunroof with express-open feature • Remote 10-disc CD changer • Available power-adjustable pedals

**For additional Overland features and options, see page 23.**

**Supplemental side-curtain air bags\* for front and rear outboard passengers join driver and front-passenger multistage air bags\* to offer you greater peace of mind.**

\* Certified to the Federal Regulations that allow less forceful front air bags. Always use seat belts. Children 12 and under should always be in a backseat correctly using an infant or child restraint system, or the seat belt positioned correctly for the child's age and size.



For representational purposes only.



**A** Standard 17x7.5-inch Avila Cast Aluminum with Sparkle Silver painted accents.

**B** Optional 17x7.5-inch Rogue Cast Aluminum, Chrome Clad.



Available Mopar 17x7.5-inch Chrome Cast Aluminum.

**JEEP, ACCESSORIES BY MOPAR** offer the opportunity to enhance and personalize your Jeep Grand Cherokee. They are available for purchase and installation at your Jeep dealer. See your dealer for the latest Mopar product information, and check out the Web site at [mopar.com](http://mopar.com).

Sure, it's grand. But underneath all that finery is an adventurous spirit ready to ride and rescue. Whether you're uptown or out of town, Grand Cherokee Limited is loaded with enough capability to cover any terrain and haul or tow with full-strength power. Best of all, it's built with true Jeep Brand genes to put you in command of a full range of road conditions and driving situations.

## Limited: Upscale Adventure

*The Limited Power Distinction* • A choice of three capable Power Tech engines (190-horsepower in-line six, 235-horsepower V8 and 265-horsepower High-Output V8) • A choice of three proven Jeep four-wheel-drive systems • Exclusive Quadra-Coil™ suspension

- Available Tire Pressure Monitoring System

For additional Limited features and options, see page 23.



Grand Cherokee can tow up to 6,500 pounds with either V8 engine and up to 5,000 pounds with the Power Tech I-6 engine. See Towing Data chart on page 22 for required towing equipment.

Brilliant Black  
Crystal Pearl Coat

Patriot Blue  
Pearl Coat

Dark Garnet Red  
Pearl Coat

Graphite  
Metallic



Grand Cherokee Limited (shown in Patriot Blue) is enhanced by integrated fog lamps, deep-tinted side and liftgate glass, and body-color grille, bumper fascias and lower bodyside cladding. Shown with Mopar 17-inch Chrome Cast Aluminum Wheels, Rock Rails and Splash Guards.



Discover more about Power Tech ENGINES @ [jeep.com](http://jeep.com)

Inferno Red  
Tinted Pearl Coat

Onyx Green  
Pearl Coat

Steel Blue  
Pearl Coat

Light Pewter  
Metallic

Bright Silver  
Metallic

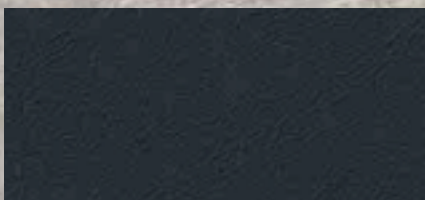
Stone  
White



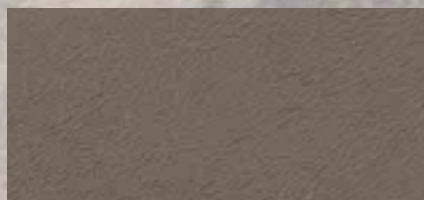


Grand Cherokee Limited leather-trimmed interior shown in Dark Slate Gray.

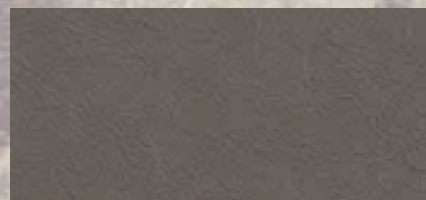
Royale Leather, Dark Slate Gray



Royale Leather, Sandstone



Royale Leather, Taupe





The secret's out. With 10 power adjustments, Limited's leather-trimmed driver's seat can harmoniously match the curve of your body. While you're at it, pick the ideal temperature for both you and your front passenger, and there it stays. To the technically savvy, it's called Infrared Dual Zone Climate Control. To you, it's simply another good reason to reinstate the Sunday pleasure drive.

**The Jeep Memory System allows you to enjoy instant customization of the driver's seat position, driver-side exterior mirror, 10 AM and 10 FM radio presets, last station settings and power-adjustable pedals (if equipped).**

## Limited: The Seat of Perfection

*The Limited Interior Distinction* • Jeep® Memory System with programmable features for two drivers • Infinity Gold® Sound System with six premium speakers • Overhead console with customer-programmable safety/convenience features • Leather-wrapped steering wheel with audio controls and speed control switches

For additional Limited features and options, see page 23.

Remote radio controls for station seeking, volume and CD/cassette selecting are conveniently located on the underside of the steering wheel.





Standard 16x7-inch Silverblade Cast Aluminum with Sparkle Silver painted accents.

**Heroic endeavors** require particular capabilities. Whether you're rescuing a fellow trail rider or trekking across the continent, Grand Cherokee Laredo is a grand companion, indeed. Consider its abundant ground clearance, available skid plates and full-time Selec-Trac® or Quadra-Trac II® on-demand four-wheel drive, for starters. When the call is made to serve and protect, you'll have the superior resources to remain in command, wherever you go.

## Laredo: Off-Road Hero

**The Laredo Power Distinction** • Standard 190-horsepower 4.0L Power Tech I-6 engine, available 235-horsepower 4.7L Power Tech V8 engine • Standard Selec-Trac or available Quadra-Trac II four-wheel drive • Four-wheel disc antilock brakes with electronic brake distribution • Quadra-Coil™ suspension

For additional Laredo features and options, see page 23.

The exclusive Quadra-Coil suspension gives Grand Cherokee exceptional capability at pavement's end — without sacrificing its on-road manners.



The front and rear bumper fascias and lower bodyside cladding on Grand Cherokee Laredo (shown in Bright Silver) are made of an energy-absorbing polymer to help protect the vehicle exterior from stone damage.

Brilliant Black  
Crystal Pearl Coat



Patriot Blue  
Pearl Coat



Dark Garnet Red  
Pearl Coat



Graphite  
Metallic







Learn more about Jeep 4x4 SYSTEMS @ [jeep.com](http://jeep.com)

Inferno Red  
Tinted Pearl Coat

Onyx Green  
Pearl Coat

Steel Blue  
Pearl Coat

Light Pewter  
Metallic

Bright Silver  
Metallic

Stone  
White





**Grand Cherokee Laredo cloth interior shown in Sandstone.  
Available low-back front bucket seats shown.  
Highback front bucket seats standard.**

Landscape Cloth, Dark Slate Gray



Landscape Cloth, Sandstone



Landscape Cloth, Taupe



Since no two tasks are alike, you can reconfigure the rear 40/60 split-folding bench seat to hold people and haul gear. Headed to parts unfamiliar at night? Passengers can use Laredo's courtesy lamps to check the map. And with remote keyless entry, you can forget about fumbling to unlock the door. That's peace of mind, refined and ready to drive – any which way you like.

**The Lockable Cargo Organizer from Mopar keeps cargo secure and hidden from view. Ask your dealer about the full line of Jeep® Accessories by Mopar.**

## Laredo: Friend In Deed

*The Laredo Interior Distinction* • Standard cloth seating, leather-trimmed seating available • Six-way power-adjustable driver's seat • Illuminated entry system • Power accessory operation delay • Full-length center-floor console • Dual visor vanity mirrors • Instrument panel-mounted auxiliary power outlet

For additional Laredo features and options, see page 23.

Take a **VIRTUAL TOUR** of the interior, and **LOAD IT** with cargo @ [jeep.com](http://jeep.com)

**JEEP PROVISIONS**, a rugged line of licensed wearables, luggage, electronics, sports equipment and more offers classic gear for the Jeep Brand enthusiast. Visit [provisions.jeep.com](http://provisions.jeep.com) to view our online catalog.

Laredo's interior is full of thoughtful touches, like this floor-mounted grommet that keeps the driver-side floor mat from sliding under the accelerator and brake pedals.

Remember to properly secure all cargo.

Royale Leather, Dark Slate Gray

Royale Leather, Sandstone

Royale Leather, Taupe

When you've won literally dozens of prestigious awards over the years, you've earned the right to show your pride. And so, Grand Cherokee can stake a claim on any 4x4 mountain. It's reached the top to be recognized time and time again. And with deep roots in the heroic Willys MB that started it all, Jeep® Grand Cherokee is built to live up to its legendary status.

## Pick of the Pride

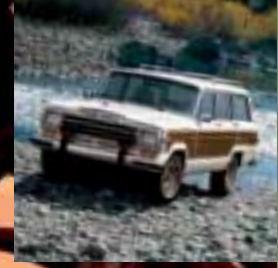
So whether you choose the potent Grand Cherokee Overland, stylish Limited or rugged Laredo, you're always driving an authentic Jeep vehicle. With features that make it easy to go everywhere; with amenities that make getting there half the fun. That's what's made Jeep the most award-winning brand of 4x4s.\* So rest assured, Grand Cherokee has what it takes to make you proud.

\* Based on major U.S. national automobile publications, 1982-2002.



**The first civilian Jeep® vehicle was the hard-working 1945 CJ-2A. Today, Jeep vehicles remain true to their heritage by giving owners a sense of personal capability and freedom.**

Forerunners to Jeep® Grand Cherokee, the 1946 Willys Model 463 Station Wagon (right) featured an industry-first all-steel body. The last of the classic Wagoneers – the Grand Wagoneer (below) – finished production in 1991.



Graphite Jeep® Grand Cherokee Overland,  
Pewter Grand Cherokee Limited and  
Inferno Red Grand Cherokee Laredo shown.

# Technical Specifications



## Exterior Dimensions (inches unless otherwise specified)

Length	
Wheelbase	105.9
Overall Length	181.5
Width	
Overall Width	72.3
Track, front/rear	59.5/59.5
Height	
Overall Height (without roof rails/including roof rails)	69.4/70.3
Ground Clearance (at curb weight)	
	Min. available 8.7 Max. available 9.1
Approach Angle/Departure Angle	36.7°/28.6°
Breakover Angle	22.6°

## Interior Dimensions (inches unless otherwise specified)

Head Room, front/rear	39.7/39.5
Leg Room, front/rear	41.4/35.3
Shoulder Room, front/rear	58.9/57.8
Cargo Volume (cu ft)	
Rear Seats Up/Folded	39.0/72.3
Seating Capacity	5

## Capacities/Weights

Fuel Tank (gal)	20.5
Base Curb Weight (lb)	
4.0L Power Tech I-6 engine, 2WD/4WD	3,784/3,989
4.7L Power Tech V8 engines, 2WD/4WD	3,877/4,081
Payload Capacity (lb)	
(with all occupants and cargo)	1,000
Maximum Gross Vehicle Weight Rating (lb)	
4.0L Power Tech I-6 engine, 2WD/4WD	5,150/5,400
4.7L Power Tech V8 engines, 2WD/4WD	5,200/5,500

## Body/Suspension/Chassis

<b>Body Design</b>	UniFrame Construction — Body sheet metal and frame structural members welded and bonded into a single unit
<b>Quadra-Coil® Suspension</b>	Front, solid axle with four locating arms, coil springs, track and stabilizer bars; dead axle on 2WD models. Rear, solid axle with two lower trailing arms, triangular upper arm, coil springs, stabilizer bar
<b>Up Country Suspension Group</b>	Unique front and rear springs, rear jounce bumpers/spacers, rear stabilizer bar bushings, high-pressure gas-charged shock absorbers, increased ride height of about 1 inch. Also includes Skid Plate Group, P245/70R16 (Laredo) or P235/65R17 SR-A OWL (Limited) all-terrain tires
<b>Vari-Lok® Rear Differential</b>	Available progressive locking differential
<b>Steering</b>	Power-assisted, recirculating ball
<b>Turns</b>	2.94, lock-to-lock
<b>Turning Diameter</b>	37.4 ft, curb-to-curb
<b>Brake System</b>	Front/Rear — Power-assisted disc brakes Antilock Brakes — Three-channel with active wheel speed sensors and electronic brake distribution (EBD)

## Powertrain

Engines	4.0L Power Tech I-6	4.7L Power Tech V8	High-Output 4.7L Power Tech V8
Horsepower, SAE net @ rpm	195 @ 4,600	235 @ 4,800	265 @ 5,200 <sup>(1)</sup>
Torque, net lb-ft @ rpm	230 @ 3,000	295 @ 3,200	325 @ 3,600
Displacement, cu in (cc)	242 (3,960)	287 (4,701)	287 (4,701)
Fuel System	Sequential multipoint electronic fuel injection	Sequential multipoint electronic fuel injection	Sequential multipoint electronic fuel injection
Transmissions	4-speed automatic with overdrive	5-speed multirange automatic with overdrive	5-speed multirange automatic with overdrive
Gear Ratios, :1			
1st	2.74	3.00	3.00
2nd	1.54	1.67 (upshift)	1.67 (upshift)
2nd alternate	—	1.50 (kickdown)	1.50 (kickdown)
3rd	1.00	1.00	1.00
4th	0.71	0.75	0.75
5th	—	0.67	0.67
Reverse	2.20	3.00	3.00
Axle Ratio, :1	3.55	3.73	3.73

<sup>(1)</sup>When using premium unleaded fuel. This engine operates safely and satisfactorily using regular unleaded fuel.

## Four-Wheel-Drive Systems

<b>Selec-Trac® NV242</b>	Full-time; two-speed with shift on the fly; includes low range (2.72:1); allows for two- or four-wheel-drive mode, full- or part-time 4WD; single-lever transfer case mode operation
<b>Quadra-Trac II® NV247</b>	On-demand; includes low range (2.72:1); single-lever transfer case mode operation
<b>Quadra-Drive® NV247</b>	On-demand; utilizes a gerotor coupling in the Quadra-Trac II transfer case and in the Vari-Lok front and rear progressive axles to send torque to the front driveshaft and/or from side-to-side within each axle when wheel slippage occurs; includes low range (2.72:1); single-lever transfer case mode operation

## Towing Data

Engine	Transmission	Maximum Loaded Trailer Weight
4.0L Power Tech I-6	4-speed automatic	5,000 lb
4.7L Power Tech V8	5-speed automatic	6,500 lb
High-Output 4.7L Power Tech V8	5-speed automatic	6,500 lb

### Class III/IV Towing (pounds)

Maximum gross combined weight rating (Class III) (2WD/4WD)	9,550/7,550
Maximum gross combined weight rating (Class IV) (2WD/4WD)	11,000/11,000
Tongue Load Limit	750

### Trailer Tow Prep Group includes:

Axle Ratio (Class III/IV)	3.73:1
---------------------------	--------

### Trailer Tow Group includes items listed above, plus:

Engine Required (Class III/IV)	4.0L Power Tech I-6/4.7L Power Tech V8s
Hitch frame-mounted receptacle for load-equalizer type hitch	
Wiring harness with 7- to 4-pin adaptor	

**RESTRICTIONS:** Trailer frontal area limitation of 64 square feet; maximum trailer length 25 feet (Class III) or 30 feet (Class IV); trailer sway control and low-profile mirrors recommended. This chart is meant to serve as a quick and easy reference guide on how to properly equip your Jeep, Grand Cherokee for towing. For specific details, however, discuss your plans with your Jeep dealer, who will help you select the right equipment to meet your specifications.

**CAUTION:** Never overload your vehicle beyond these design capacities. DaimlerChrysler cannot be responsible for brake performance if the Jeep vehicle and hydraulic brake systems are in any way connected. A separate brake system for all trailers weighing over 1,000 pounds gross is recommended. (State laws should be checked for trailer brake requirements.) See Owner's Manual for important information regarding proper operation of this vehicle.

All product illustrations, specifications and competitive comparisons are based upon current information at the time of publication approval. Although descriptions are believed correct, complete accuracy cannot be guaranteed. DaimlerChrysler reserves the right to make changes at any time, without notice or obligation, in prices, specifications, equipment, colors and materials, and to change or discontinue models. Some of the equipment shown or described throughout this catalog is available at extra cost. See your dealer for the latest information.

Jeep, Grand Cherokee, Liberty, Wrangler, the Jeep grille, Quadra-Drive, Quadra-Trac II, Selec-Trac, Vari-Lok, Trac-Lok, Quadra-Coil, Sentry Key, Mopar and Camp Jeep are trademarks of DaimlerChrysler. HomeLink is a registered trademark owned by Johnson Controls, Inc. Infinity is a registered trademark of Harman International Industries, Inc.

# Standard & Optional Features

Safety & Security	CPOS <sup>SM</sup> Package	Trim				
		Laredo	Limited	Overland	K	L
<b>Air Bags<sup>1)</sup></b> – Next Generation multistage driver and front-passenger – Supplemental side-curtain for front and rear outboard passengers		•	•	•	•	•
<b>Brake-Park Interlock</b> – Cannot shift out of Park unless brake pedal is depressed		•	•	•	•	•
<b>Brakes</b> – Antilock four-wheel disc		•	•	•	•	•
<b>Door Locks</b> – Child-protection rear – Power with illuminated controls, programmable		•	•	•	•	•
<b>Engine Immobilizer</b> – Sentry Key <sup>®</sup>		•	•	•	•	•
<b>Glass</b> – Tinted, deep-tinted sunscreen on rear door, quarter and liftgate windows		•	•	•	•	•
<b>HomeLink<sup>®</sup> Universal Transceiver</b> – Programmable radio frequency codes for up to three different remote-controlled systems		•	•	•	•	•
<b>Jeep<sup>®</sup> Memory System</b> – Programmable features for two drivers include driver's power seat positions, driver's power exterior mirror, 10 AM and 10 FM radio presets and last station settings, power-adjustable pedals (if equipped); includes two unique keyless entry key fobs		•	•	•	•	•
<b>LATCH</b> – Lower Anchors and Tether for Children; for compatible aftermarket child seats		•	•	•	•	•
<b>Remote Keyless Entry</b> – Two key fob transmitters with controls for power door locks, illuminated entry system, liftgate release and panic alarm		•	•	•	•	•
<b>Seat Belts</b> – Front height-adjustable with turning loops, front and rear outboard lap/shoulder belts and rear-seat center lap belt		•	•	•	•	•
<b>Speed Control</b> – Electronic with steering wheel-mounted controls		•	•	•	•	•
<b>Tire Pressure Monitoring System</b> – Monitors and displays in EVIC individual tire pressures for all four rotating tires and warns if pressure is high or low of the preset threshold		•	•	•	•	•
<b>Tires</b> – Full-size spare with steel wheel		•	•	•	•	•
– P225/75R16 Goodyear Wrangler ST all-season, OWL, radial		•	•	•	•	•
– P245/70R16 Goodyear Wrangler SR-A all-terrain OWL (included in Up Country Suspension Group)		0	O/P			
– P235/65R17 Goodyear Eagle LS all-season, BSW, radial (included with High-Output 4.7L Power Tech V8)					P	
– P235/65R17 Michelin LTX all-season BSW, radial (not available with Up Country Suspension Group)				•	•	
– P235/65R17 Goodyear Wrangler SR-A all-terrain OWL (included in Up Country Suspension Group)			O/P	O/P	•	
<b>Vehicle Security System</b> – Monitors doors, ignition, hood and liftgate		0	•	•	•	•

## Exterior

<b>Liftgate</b> – Rear with fixed intermittent wiper/washer, flipper glass, electric defroster	•	•	•	•	•
<b>Lighting</b> – Quad-halogen aero-designed headlamps with time-delay feature – Center high-mounted stoplamp, rear liftgate mounted – Automatic Headlamps – Programmable headlamps-on-with-wipers and parade mode features – Fog lamps, integral with front fascia	•	•	•	•	•
<b>Mirrors</b> – Dual power, foldaway – Power heated (included in Cold Weather Group) – Dual power, foldaway, heated, driver-side automatic-dimming	•	•	•	•	•
<b>Roof Rack Side Rails</b> – Side rails for use as cargo-carrying base – Two adjustable cross rails, 150-lb carrying capacity	0	•	•	•	•
<b>Sunroof</b> – Power with express-open and comfort-stop features	0	0	0	•	•
<b>Wiper System</b> – Speed-sensitive, intermittent front and rear – Rain-sensitive variable intermittent, automatic front, intermittent rear	•	•	•	•	•

## Interior

<b>Air Conditioning</b> – Manual control – Infrared Dual Zone Climate Control	•	•	•	•	•
<b>Cargo Area</b> – Tie-down loops in floor/quarter trim – Cargo compartment cover, retractable – Covered storage bin, includes auxiliary power outlet (included with 10-disc CD changer)	•	•	•	•	•
<b>Floor Mats</b> – Carpeted, front – Carpeted, front and rear	•	•	•	•	•
<b>Lighting</b> – Cargo area lamp with overhead on/off switch, rear passenger overhead reading/courtesy lamp with toggle feature, footlamps and glove box lamp – Front door courtesy lamps	•	•	•	•	•
<b>Mirrors</b> – Rearview, day/night – Rearview, automatic-dimming day/night	•	•	•	•	•

## Interior continued

Interior continued	CPOS <sup>SM</sup> Package	Trim				
		Laredo	Limited	Overland	K	L
<b>Seats</b> – Rear 40/60 split-folding bench with height-adjustable, folding outboard head restraints – Power, six-way, driver – Power, six-way, driver and front-passenger – Power, 10-way, driver, with easy exit feature and six-way front-passenger – Power, 10-way, driver and front-passenger with driver's easy exit feature		•	•	•	•	•
<b>Steering Wheel</b> – Vinyl with speed control switches and center horn pad – Leather-wrapped (color-keyed) with speed control switches, center-mounted horn pad and radio controls for volume, radio presets, seek and mode selection (included with Royale Leather trim seats) – Leather- and real wood-trimmed with speed control switches, center horn pad and radio controls for volume, radio presets, seek and mode selection		•	•	•	•	•
<b>Sun Visors</b> – Dual illuminated visor vanity mirrors with color-keyed sunshade extensions		•	•	•	•	•
<b>Windows</b> – Power with illuminated controls, driver's lockout with one-touch-down feature		•	•	•	•	•

## In-Car Entertainment

<b>Sound System</b> – AM/FM stereo radio with CD player, CD changer controls, clock and six speakers – AM stereo <sup>2)</sup> /FM stereo radio with full-logic cassette and CD players, CD changer controls, graphic equalizer and clock – AM stereo/FM stereo radio with full-logic cassette and CD players, graphic equalizer, 10-disc remote CD changer, clock and Infinity Gold <sup>®</sup> Sound System	•	•	•	•	•
<b>Speakers</b> – Infinity Gold Sound System with six premium speakers and 180-watt six-channel power amplifier	•	•	•	•	•

## Capability

<b>Axle</b> – Vari-Lok <sup>®</sup> rear with variable and progressive locking features	0	0	0	•	•
<b>Engine Block Heater</b> – Aids cold weather starting	0	0	0	0	0
<b>Powertrain</b> – 4.0L Power Tech I-6 with four-speed automatic transmission – 4.7L Power Tech V8 with five-speed multirange automatic transmission – High-Output 4.7L Power Tech V8 with five-speed multirange automatic transmission	•	•	•	•	•
<b>Skid Plate Group</b> – Fuel tank, transfer case and front suspension skid plates and tow hooks (two front/one rear) (4WD models only) (included in Up Country Suspension Group)	0/P	0/P	0/P	0/P	•
<b>Suspension</b> – Quadra-Coil <sup>™</sup> – Up Country Suspension Group (4WD models only); not available with Class III Trailer Tow Group and power sunroof	•	•	•	•	•
<b>Trailer Towing</b> – Trailer Tow Prep Group, includes 3.73:1 axle ratio, mechanical cooling fan and trailer tow wiring harness assembly – Trailer Tow Group, Class III, includes 3.73:1 axle ratio, frame-mounted receiver hitch, wiring harness and 7- to 4-pin adaptor (requires I-6 engine) – Trailer Tow Group, Class IV, includes power steering cooler, frame-mounted receiver hitch, 7- to 4-pin adaptor (requires V8 engine)	0	0	0	0	0
<b>Transfer Case</b> (4WD models only) – Selec-Trac <sup>®</sup> NV242 full-time 4WD – Quadra-Trac II <sup>®</sup> NV247 on-demand 4WD system (included with V8 engine) – Quadra-Drive <sup>®</sup> progressive on-demand 4WD; includes Quadra-Trac II transfer case and Vari-Lok front and rear variable and progressive locking axles	•	•	•	•	•

## Luxury & Convenience

<b>Cold Weather Group</b> – Heated exterior mirrors, heated driver and front-passenger seats with HI/LO settings (requires leather-trimmed seats)	•	•	•	•	•
<b>Console</b> – Full-length center-floor, includes dual front and rear cup holders, padded armrest, storage bin for CD/cassette tapes, tissue box, pen and coin holders – Mini-overhead with customer-programmable convenience/safety features; trip computer, compass and outside temperature readings; two map/reading lamps	•	•	•	•	•
<b>Luxury Group</b> – Automatic-dimming interior mirror (not included in Laredo F Package), automatic headlamps (ON/OFF)	•	•	•	•	•
<b>Pedals</b> – Power-adjustable brake and accelerator – Power-adjustable, with memory	0	0	0	0	0
<b>Power Accessory Delay</b> – Allows operation of power sunroof (available) and windows for 45 seconds after ignition is turned off or until a door is opened	•	•	•	•	•
<b>Power Outlets</b> – 12-volt, battery-powered, instrument panel- and cargo area-mounted	•	•	•	•	•

• = Included. P = Available within package noted. 0 = Optional.

<sup>1)</sup> Certified to the Federal Regulations that allow less forceful front air bags. Always use seat belts. Children 12 and under should always be in a backseat correctly using an infant or child restraint system, or the seat belt positioned correctly for the child's age and size.

<sup>2)</sup> Some AM stereo broadcasting may not be compatible with this radio.



As a founding member and official sponsor, we urge all Jeep<sup>®</sup> vehicle owners to follow Tread Lightly! guidelines and "enjoy the outdoors responsibly." To learn more, visit [treadlightly.org](http://treadlightly.org) or call (800) 966-9900.



Laredo



Limited



Overland

BUILD YOUR VEHICLE, GET A QUOTE, FIND A DEALER and more @ [jeep.com](http://jeep.com)

## Jeep® Brand Resources

You can follow these simple steps to find the new Jeep® vehicle that meets your needs — and suits your lifestyle.

**Visit your dealership.**

Your Jeep dealer's knowledgeable and professionally trained staff can guide you through the shopping process with expert advice. You'll bring along some expertise of your own after you ...

**Visit [jeep.com](http://jeep.com).**

Our Web site offers detailed information on all Jeep vehicles. You can virtually assemble any Jeep 4x4 you like by choosing the model with your favorite color combinations, equipment and features — and then pricing it all out. If you have even more questions ...

**Call (800) 925-JEEP.**

Our seasoned Jeep Brand customer service representatives are there with help — and all the answers.

**Warranty.**

All 2003 Jeep vehicles are covered by a 3/36 Basic Limited Warranty and a 7/70 Powertrain Limited Warranty. Deductible applies to 7/70. Ask your dealer for additional details and a copy of these Limited Warranties.



**Financing options.**

Chrysler Financial, a member of the DaimlerChrysler Services Group, has flexible payment plans and financing products available for qualified buyers. Ask your Jeep dealer to help you arrange a Chrysler Financial financing or leasing plan that is adaptable to your vehicle needs and your lifestyle. To find more information about our wide variety of financing products, use our loan/lease payment estimator or apply for pre-approval, visit [chryslerfinancial.com](http://chryslerfinancial.com).

# Jeep®

Jeep is a registered trademark of DaimlerChrysler.