



2016 LINCOLN MKS



In its most coveted form, beauty extends far beyond the surface. Just as it does in MKS. Precisely crafted with exceptional attention to detail, MKS is designed to transform everyday drives into special experiences. Its strong lines impart confidence while conveying grace from every angle. Its chrome accents gleam in the sunlight. As its beauty flows from within, the 2016 Lincoln MKS establishes a commanding presence and creates its own distinctive style of luxury.



## EXPRESSIVE DESIGN

### IMAGINE THE JOYFUL EMPOWERMENT OF GOLFING WITH CUSTOM-FIT CLUBS. IT'S A LOT LIKE THAT.

The elegant simplicity of its controls instantly puts you at ease. Seated at the leather-wrapped heated<sup>1</sup> steering wheel of your new MKS, you'll notice paddle shifters discreetly tucked behind it. They give you the power to put the 6-speed SelectShift<sup>®</sup> automatic transmission through its paces any time you're in the mood for a more spirited drive.

The position of the adjustable<sup>1</sup> brake and accelerator pedals, the sideview mirrors, and the front seats can be set using power controls, then saved to memory for your MKS to recall at the touch of a button.

Providing personalized comfort for you and your front passenger, dual-zone electronic automatic temperature control lets you each set a different preferred temperature. This feature also works in tandem with the Remote Start System to prepare the vehicle for your arrival. MyKey<sup>®</sup> lets you program a key to establish an earlier low-fuel warning and much more. Personalized control. It's yours with MKS.

<sup>1</sup>Available feature.



### ADAPTIVE HID HEADLAMPS

To provide more visibility when driving around curves, adaptive HID headlamps feature beams that move in the same direction as the steering wheel. Their bright, white light also provides better visibility than conventional halogen lamps. Paired with the convenience of auto high beams, they add an extra measure of ease to your Lincoln MKS.



*EXPRESSIVE DESIGN*

**BEAUTIFULLY COMFORTING. LINCOLN MKS REJUVENATES.**

Every day is the perfect day for a drive in MKS. Surrounded by the richness of **genuine wood accents**, the gracefully contoured front seats are **heated and cooled** for extra soothing in all sorts of climates. They're also trimmed in **Bridge of Weir™ leather**, which is created using an **organic tanning process**. You may encounter it on fine furniture, ocean liners and jets, too.

To help reduce muscle fatigue in your legs and lower back on longer drives, the **multicontour front seats with Active Motion®**<sup>1</sup> feature massage functionality that utilizes air cushions inside the seat bottoms and seat backs to provide a gentle rolling movement.

For a refined acoustic experience, **active noise control**<sup>1</sup> cancels out unwanted engine sounds by sending opposing sound waves through the audio system – helping increase your enjoyment of conversations, music and other audio entertainment inside MKS.

<sup>1</sup>Available feature.

What could be easier than speaking your mind? Our next generation of voice-activated technology – SYNC® 3 – connects you to the world around you with its straightforward new design and features.<sup>1</sup> Audio, phone, navigation<sup>2</sup> and other functions are concisely presented on the full-colour 8" LCD touch screen. Whether you command it using simple, everyday language, or swipe its capacitive touch screen, SYNC 3 delivers high-speed performance. Plus, automatic updates over Wi-Fi<sup>3</sup> help keep it running at its best, so you can keep your eyes on the road and hands on the wheel.

## SYNC

### SYNC 3

Place and answer calls, and control music from your USB or smartphone, all with simple voice commands. New seamless integration with Siri® brings the power of Siri Eyes Free<sup>4</sup> and your iPhone® into your vehicle. Navigation<sup>2</sup> lets you pinch to zoom maps and makes it easy to enter your destination, find the closest beach or ski resort, and so much more. SYNC AppLink™<sup>5</sup> lets you control compatible mobile apps by voice too.

## THX

### THX II CERTIFIED AUDIO SYSTEM

Give yourself and every passenger a front-row seat to the concert with the THX® II Certified Audio System.<sup>2</sup> It features specialized sound processing technology combined with 700 watts of power running through 16 speakers to bring the feel of a live show to your everyday commute.

## SiriusXM

### SIRIUSXM

Listen to your favourites all across Canada with SiriusXM.<sup>6</sup> Get the best in audio entertainment, including 100% commercial-free music from every genre, world-class news, sports, comedy and entertainment, with your 6-month prepaid subscription.<sup>6</sup>

<sup>1</sup>Some mobile phones and some digital media players may not be fully compatible. Driving while distracted can result in loss of vehicle control. Only use SYNC/other devices, even with voice commands, when it is safe to do so. SYNC voice recognition and screens available in English, French and Spanish. Some features may be locked out while the vehicle is in motion.  
<sup>2</sup>Available feature. <sup>3</sup>Optional Navigation System map updates cannot be received via Wi-Fi and require a separate update. Data rates may apply. <sup>4</sup>You must have a Bluetooth®-enabled phone paired to your SYNC system. <sup>5</sup>SYNC AppLink is available on select models and compatible with select smartphone platforms. Commands may vary by phone and AppLink software. <sup>6</sup>SiriusXM subscriptions sold after 6-month prepaid period expires. Subscriptions are governed by SiriusXM Customer Agreement; see [siriusxm.ca](http://siriusxm.ca).



INNOVATIVE TECHNOLOGIES



Many a driver has gone around the block just to avoid parallel parking. **Active park assist**<sup>1</sup> can help take the guesswork – and stress – out of it. Ultrasonic sensors measure open spaces to help the system find a parking spot as small as 1.2 times the length of your vehicle. When it does, take your hands off the wheel, then watch the rear view camera screen as the system guides you into it, while you control the brake, shifter and accelerator.

We could all benefit from a little forward thinking. Thankfully, when you're pulling into a space, the **Forward Sensing System** on MKS sounds an audible tone if its sensors on the front bumper detect an object in front of your vehicle.

It's important to have a sense of what's happening around you. A **Reverse Sensing System** and rear view camera are both standard on every MKS. The warning sounds and full-colour visuals are helpful when you're backing into or out of tight spaces. Plus, the camera can display visual guidelines to help you estimate distances.



It can be easy to miss when a vehicle has entered your blind spot. Just as the name suggests, **BLIS® (Blind Spot Information System)**<sup>1</sup> can help keep you aware of vehicles that may be out of your line of view. The system alerts you with a light in the corresponding sideview mirror<sup>2</sup> if its radar sensors detect a vehicle. **Cross-traffic alert**<sup>1</sup> notifies you with an audible warning and a light in your sideview mirror if it detects a vehicle approaching either side as you're slowly backing out of a space.



Every now and then, we need a little nudge in the right direction. Fortunately, the **Lane-Keeping System**<sup>1,3</sup> can alert you with steering wheel vibration pulses if it senses you drifting out of your lane, and can then apply steering wheel torque to help direct you to steer back into it. The **Driver Alert System**<sup>1</sup> uses a forward-facing camera to detect lane markings, and displays a coffee cup icon in your gauge cluster if it detects that you've come too close to – or crossed – the lane marker lines too many times.



It always pays to plan ahead – and your MKS can help with that. Using advanced radar technology to constantly scan for slower vehicles in front of you, **adaptive cruise control and collision warning with brake support**<sup>1</sup> can automatically change your vehicle's speed to maintain your choice of 4 preset gaps – without you having to engage the brake or accelerator pedals. If collision warning with brake support senses a potential collision, the system flashes a warning across the windshield, sounds an alarm, and then pre-charges the brakes and increases the brake-assist sensitivity to help provide full responsiveness when you brake.



POWERFUL PRESENCE



#### 3.5L ECOBOOST

Turbocharge your travels. Lincoln MKS appeals to your outgoing nature with its **365-hp**<sup>1</sup> 3.5L EcoBoost® twin-turbocharged, direct-injection engine.<sup>2</sup> You'll especially enjoy its substantial low-end torque when you accelerate to pass other vehicles or to enter a highway. Plus, every MKS includes **Intelligent all-wheel drive (AWD)** for a dynamic driving experience – rain or shine.

9.8  
L/100 km  
HWY<sup>3</sup>

#### 3.7L Ti-VCT

Some say efficiency is its own reward. Fortunately, MKS mixes it with plenty of power, courtesy of its standard 3.7L Ti-VCT engine. **Twin independent variable camshaft timing** precisely controls the intake and exhaust valves, helping to produce 304 hp and 279 lb.-ft. of torque, while also optimizing fuel combustion. The **Active Grille Shutter System** included with the 3.7L automatically opens and closes to help improve aerodynamics and fuel efficiency.<sup>3</sup>

<sup>1</sup>Figures achieved using 93-octane fuel. <sup>2</sup>Available feature. <sup>3</sup>14.2L/100 km city and 9.8L/100 km hwy (20 mpg city/29 hwy), 3.7L, AWD. Fuel consumption ratings based on Government of Canada approved test methods. Actual fuel consumption will vary.





## *POWERFUL PRESENCE*

Wherever your travels lead, MKS is engineered to help you enjoy the ride. **Lincoln Drive Control featuring continuously controlled damping (CCD)** uses sensors to read the road – and your driving input – 500 times per second, then quickly adjusts the firmness and damping at all 4 wheels to help your vehicle be in harmony with the road. The system also lets you select between 3 drive modes – Comfort, Normal or Sport – to match your driving style. **Electric power-assisted steering (EPAS)** automatically adjusts your steering for different driving situations. At the same time, **Torque Vectoring Control** adjusts the speed between your front wheels for enhanced cornering and agility.<sup>1</sup> Standard **Intelligent all-wheel drive** also helps you power through challenging driving conditions by optimizing available traction. MKS is designed to embrace the curves.

<sup>1</sup>Remember that even advanced technology cannot overcome the laws of physics. It's always possible to lose control of a vehicle due to inappropriate driver input for the conditions.





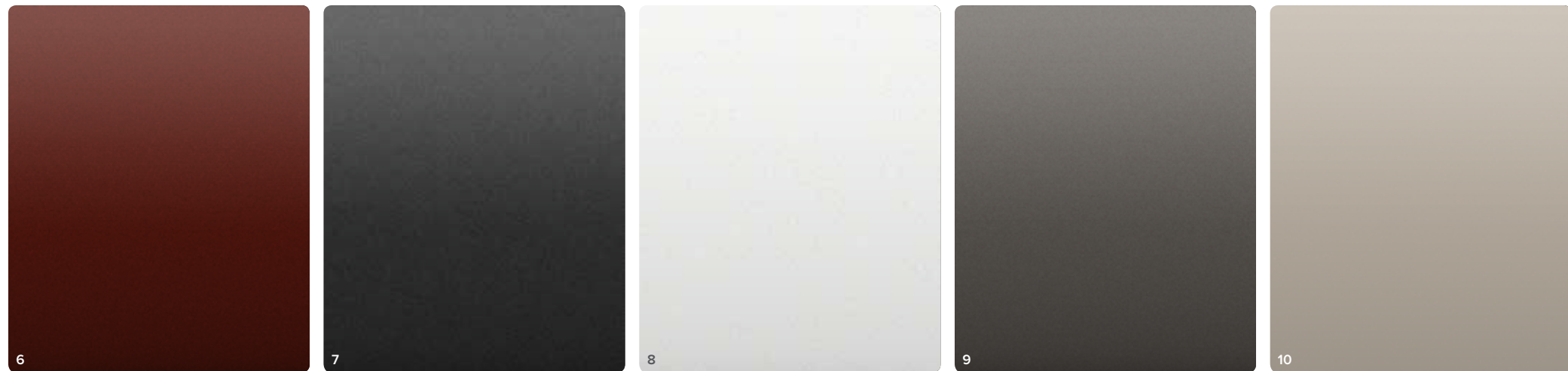
## PREMIUM EXPERIENCES

### LIKE THE WARMING RAYS OF THE SUN, MKS IMPARTS A SENSE OF SERENITY.

Beneath its beautiful surface lies an array of advanced technologies designed to support your well-being. **AdvanceTrac® ESC (electronic stability control)** helps keep you on your intended path,<sup>1</sup> while dual-stage front, front-seat side, and side-curtain airbags can help make your travels safe ones. A **dual-panel power moonroof<sup>2</sup>** opens wide to give everyone a clear view, and includes a power sunshade for when you'd rather keep the sun at bay. There's even a **power rear sunshade<sup>2</sup>** that rises with the touch of a button to help shade your rear-seat passengers and help keep the interior cool. And on those early-morning trips when it's a little cooler outside, you can offer those same fortunate passengers **heated rear outboard seats<sup>2</sup>** to adjust to their liking. MKS fills each day with subtle luxuries.

<sup>1</sup>Remember that even advanced technology cannot overcome the laws of physics. It's always possible to lose control of a vehicle due to inappropriate driver input for the conditions. <sup>2</sup>Available feature.





- 1. Black Velvet
- 2. Ruby Red Metallic Tinted Clearcoat<sup>1</sup>
- 3. Ingot Silver Metallic
- 4. Guard Metallic
- 5. Java Metallic
- 6. Bronze Fire Metallic Tinted Clearcoat<sup>1</sup>
- 7. Magnetic Metallic
- 8. White Platinum Metallic Tri-coat<sup>1</sup>
- 9. Luxe Metallic
- 10. Platinum Dune Metallic Tri-coat<sup>1</sup>

*Charcoal Black*



Charcoal Black Leather



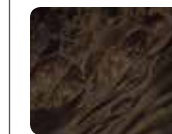
Brown Swirl  
Walnut Wood

Available with all exterior colours

*Light Dune*



Light Dune Leather



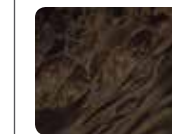
Prussian Burl  
Wood

Available with all exterior colours

*Hazelnut*



Hazelnut Leather



Prussian Burl  
Wood

Available with exterior colours 1, 3, 4, 5, 6, 8, 9, 10

MKS	
MKS with EcoBoost	
S	<b>POWER AND HANDLING</b> 3.7L Ti-VCT aluminum V6 engine 304 hp @ 6,500 rpm <sup>1</sup> 279 lb.-ft. of torque @ 4,000 rpm <sup>1</sup> Estimated Fuel Consumption <sup>2</sup> AWD 14.2L/100 km city and 9.8L/100 km hwy (20 mpg city/29 hwy) (72.0-litre fuel tank capacity)
S	3.5L EcoBoost® V6 twin-turbocharged direct-injection engine 365 hp @ 5,500 rpm <sup>1</sup> 350 lb.-ft. of torque @ 3,500 rpm <sup>1</sup> Estimated Fuel Consumption <sup>2</sup> AWD 14.7L/100 km city and 9.8L/100 km hwy (19 mpg city/29 hwy) (72.0-litre fuel tank capacity)
S	S 6-speed SelectShift® automatic transmission with paddle activation
S	S Active Grille Shutter System
S	S Active noise control
S	S Battery Management System
S	S Brake- and engine-actuated traction control
O	S Engine block heater
S	S Intelligent all-wheel drive (AWD)
S	S Lincoln Drive Control featuring continuously controlled damping (CCD) and electric power-assisted steering (EPAS)
S	S Power, ventilated disc brakes with Anti-Lock Brake System (ABS)
S	S Torque Vectoring Control
<b>EXTERIOR FEATURES</b>	
S	S Adaptive HID headlamps with auto high beams and autolamp on/off feature with delay
S	S Dual exhaust with bright tips
S	S Easy Fuel® capless fuel filler
S	S Forward and Reverse Sensing Systems
S	S Halogen projector-beam fog lamps
S	S LED tail lamps
S	S Lincoln split-wing grille
S	S Power, heated, body-colour sideview mirrors with integrated blind spot mirrors, security approach lamps, memory and auto-dimming driver's side
S	S Rain-sensing windshield wipers
S	S Solar-tinted, laminated windshield and front-door glass
<b>DRIVER CONTROLS</b>	
S	S Cruise control
S	S Dual-zone electronic automatic temperature control
S	S Intelligent Access with push-button start
S	S Power-tilt/-telescoping steering column with memory
S	S Remote Start System
S	S SYNC® 3 Enhanced Voice Recognition Communications and Entertainment System with 8" colour LCD touch screen in centre stack with swiping capability, AppLink™ 911 Assist,® and 2 smart-charging USB ports
S	S Universal garage door opener

MKS		
MKS with EcoBoost		
S	S	<b>AUDIO AND ENTERTAINMENT SYSTEMS</b> Lincoln Premium Sound System with AM/FM stereo, single-CD player, MP3 capability and 10 speakers
S	S	SiriusXM,® including SiriusXM receiver, low-profile antenna, and 6-month prepaid subscription
<b>INTERIOR FEATURES</b>		
S	S	12-volt powerpoints (3)
S	S	Ambient lighting
S	S	Auto-dimming rearview mirror
O	O	Dual-panel power moonroof with power sunshade
S	S	Leather-wrapped steering wheel with genuine wood accent in brown swirl walnut or Prussian burl
S	S	Power windows with global open and one-touch-up/-down for driver and front passenger
<b>SEATING</b>		
S	S	12-way power, heated and cooled driver and front-passenger seats with power lumbar and memory feature
S	S	Bridge of Weir™ leather-trimmed seats
S	S	Rear-seat centre armrest with pass-through and 2 cupholders
<b>SAFETY AND SECURITY</b>		
S	S	Personal Safety System™ for driver and front passenger with dual-stage front airbags, <sup>3</sup> safety belt pretensioners, safety belt energy-management retractors, safety belt usage sensors, driver's seat position sensor, crash severity sensor, restraint control module and Front-Passenger Sensing System
S	S	Front-seat side airbags <sup>3</sup>
S	S	Safety Canopy® System with side-curtain airbags, <sup>3</sup> roll-fold technology and rollover sensor
S	S	AdvanceTrac® ESC (electronic stability control) with Curve Control
S	S	Anti-theft perimeter alarm
S	S	LATCH (Lower Anchors and Tether Anchors for Children)
S	S	MyKey®
S	S	Rear view camera
S	S	SecuriCode™ invisible keypad
S	S	SecuriLock® Passive Anti-Theft Engine Immobilizer System
S	S	SOS Post-Crash Alert System™
S	S	Tire Pressure Monitoring System (excludes spare)

MKS		
MKS with EcoBoost		
<b>PACKAGES</b>		
O	S	Cold Weather Package: heated steering wheel and rear outboard seats (requires Elite Package)
O	S	Elite Package: BLIS® (Blind Spot Information System) with cross-traffic alert; <sup>4</sup> THX® II Certified Audio System with 16 speakers (including 10" subwoofer), and 14-channel amplifier with 700 watts of maximum power; voice-activated Navigation System with pinch-to-zoom capability; 8-way power multicontour front seats with Active Motion®; power-adjustable pedals with memory; power rear sunshade; and wood appliques in brown swirl walnut or Prussian burl on all doors, front centre console and shifter surround
O	O	Technology Package: adaptive cruise control and collision warning with brake support, active park assist, and Lane-Keeping System with Driver Alert System (requires Elite Package)

S = Standard O = Optional



19" Premium Painted Aluminum Standard



20" Polished Aluminum Standard on EcoBoost



20" Premium Painted Aluminum with Chrome Inserts Available (Not available with EcoBoost)

#### DIMENSIONS

**LENGTH** 5,222 mm (205.6") **HEIGHT** 1,565 mm (61.6") **WHEELBASE** 2,868 mm (112.9") **WIDTH** 2,172 mm (85.5") (including mirrors) 1,928 mm (75.9") (mirrors folded)

**HEAD ROOM** 1,008 mm (39.7") front 930 mm 978 mm (38.5") rear **SHOULDER ROOM** 1,488 mm (58.6") front 1,458 mm (57.4") rear

**HIP ROOM** 1,405 mm (55.3") front 1,405 mm (55.3") rear **LEG ROOM** 1,123 mm (44.2") front (max.) 980 mm (38.6") rear

**CARGO VOLUME** 544 litres (19.2 cu. ft.) **PASSENGER VOLUME** 2,996 litres (105.8 cu. ft.) **TOTAL INTERIOR VOLUME** 3,540 litres (125.0 cu. ft.)

<sup>1</sup>Figures achieved using 93-octane fuel. <sup>2</sup>Fuel consumption ratings based on Government of Canada approved test methods. Actual fuel consumption will vary for all ratings. <sup>3</sup>Always wear your safety belt and secure children in the rear seat. <sup>4</sup>BLIS replaces standard integrated blind spot mirrors. <sup>5</sup>Lincoln Licensed Accessory.

Bridge of Weir is a trademark of Bridge of Weir Leather Company Limited. iPhone and Siri are trademarks of Apple Inc., registered in the U.S. and other countries. "SiriusXM," the SiriusXM logo, channel names and logos are trademarks of SiriusXM Radio Inc. and are used under licence. The Bluetooth word mark is a trademark of the Bluetooth SIG, Inc. THX and the THX logo are trademarks of THX Ltd., registered in the U.S. and other jurisdictions. Wi-Fi® is a registered trademark of the Wi-Fi Alliance.® All other trademarks, service marks, images and logos are property of their respective owners and are displayed in this publication with permission. All rights reserved.

Comparisons based on competitive models (class is Luxury Full-Size Sedans based on Lincoln segmentation), publicly available information and Ford certification data at the time of printing. Some features discussed may be optional. Vehicles shown may contain optional equipment. Features shown may be offered only in combination with other options or subject to additional ordering requirements or limitations. Dimensions shown may vary due to optional features and/or production variability. Information is provided on an "as is" basis and could include technical, typographical or other errors. Ford Motor Company of Canada, Limited, makes no warranties, representations, or guarantees of any kind, express or implied, including but not limited to, accuracy, currency, or completeness, the operation of the information, materials, content, availability, and products. Your local Lincoln Dealer is your best source for up-to-date information. Lincoln, Ford Motor Company of Canada, Limited, reserves the right to change product specifications at any time without incurring obligations. Colours may not be exactly as illustrated due to restrictions of the printing process. Please see your sales consultant for specific colour and model availability.



#### EXTERIOR

Full vehicle cover by Covercraft®<sup>5</sup>

Locking fuel plug

Moonroof deflector

Side window deflectors

Splash guards

Wheel lock kit

#### INTERIOR

All-weather and premium carpeted floor mats

Cargo area protector

Cargo organizer

First aid kit by DC Safety<sup>5</sup>

Roadside assistance kit by DC Safety<sup>5</sup>

Soft cargo cooler bag

Soft cargo organizers (large and standard sizes)

Sport pedals

Tablet cradle by Lumen®<sup>5</sup>



THE LINCOLN

# PLEDGE

## There For You

Our pledge is the collective promise of everyone at the Lincoln Motor Company to be there for you and your Lincoln. As you join the Lincoln family, you're not only choosing an exceptional vehicle, but also exceptional maintenance and service. A few of the many comprehensive services designed for you are:

- 24/7 Roadside Assistance for peace of mind
- Expert advice for all your questions
- Convenient courtesy vehicle available while yours is in service
- Complimentary car wash to brighten your day

We provide all this and more in order to help keep your Lincoln running smoothly. We're here for you. Visit your local Lincoln Dealer or call the Lincoln Concierge at 1.888.658.6554 for details. Available at participating dealers. Restrictions may apply.

**Lincoln Automotive Financial Services** Get the ride you want. Whether you plan to lease or finance, you'll find the choices that are right for you at Lincoln Automotive Financial Services. Visit your local Lincoln Dealer, call the Customer Service Centre at 1.855.768.8909 or go to [LincolnAFS.ca](http://LincolnAFS.ca) for details.

**Ford Extended Service Plan** Help protect your investment and add to your peace of mind by complementing your Lincoln purchase or lease with a Ford Extended Service Plan (ESP). Ford ESP protects you against unexpected repair costs after your Basic Coverage in the New Vehicle Limited Warranty expires by covering many vehicle components. Enjoy the drive even more by complementing your ESP with the Lincoln Maintenance Protection Plan (LMPP), which covers all required scheduled maintenance for your vehicle, plus 8 wear items. See your local Lincoln Dealer for details.

**Lincoln Limited Warranties** Your 2016 Lincoln MKS comes with a 4-year/80,000-km Basic Warranty. Your Powertrain Warranty, Safety Restraint System coverage and Corrosion coverage last even longer. See your local Lincoln Dealer for details.

**Lincoln Original Accessories** that are properly installed by the authorized Dealer that sold the accessory will be warranted for whichever provides you the greatest benefit: 24 months/unlimited distance, or the remainder of your 4-year/80,000-km New Vehicle Limited Warranty. Lincoln Licensed Accessories (LLA) are warranted by the accessory manufacturer's warranty. LLA are designed and developed by the accessory manufacturer and have not been designed or tested to Ford Motor Company engineering requirements. Contact your local Lincoln Dealer for details and/or a copy of all limited warranties.

