

LINCOLN  
& MKZ  
HYBRID MKZ



2012



41 MPG  HYBRID



THE UNDENIABLE ADVANTAGE:  
OVER 700 CITY MILES<sup>1</sup> ON A SINGLE TANK.

Lincoln MKZ Hybrid achieves 41 mpg city — besting its nearest competitor<sup>2</sup> by 6 mpg. It also delivers an impressive 36 mpg on the highway. Power is readily available from the 2.5L iVCT Atkinson-cycle I-4 engine.

In fact, it can reach speeds up to 47 mph in electric mode and sports 191 net horsepower. Advanced processor technology allows for seamless transitions from electric mode to gas. The 2012 Lincoln MKZ Hybrid. The most fuel-efficient luxury sedan in America<sup>1</sup>

Lincoln MKZ Hybrid. Ingot Silver Metallic.

<sup>1</sup>EPA-estimated 41 city/36 hwy/39 combined mpg, 17.5-gallon tank. Actual mileage will vary. Excludes diesels.

<sup>2</sup>Class is Midsize Hybrid Sedans vs. 2011 competitors.



GAUGES AS STUNNINGLY HIGH-TECH  
AS THE ENGINE THAT INSPIRED THEM.

Choosing to drive a hybrid is an important choice. One that shows you care about the big picture. At Lincoln, we encourage environmental consciousness, and the specially designed Lincoln MKZ Hybrid instrument cluster does that for you every day. Inspirational leaves grow and blossom on the innovative LCD screen to support and reward your short- and long-term driving efficiency.

Environmental impact was considered in the design process. The wood interior trim comes from rigorously controlled sources. Lincoln MKZ Hybrid even captures the kinetic energy that's released when you brake, and uses it to recharge the battery pack with its Regenerative Braking System. Even stopping will help move you forward in an exceedingly smarter way.



**SYNC**  
LINCOLN Powered by Microsoft

With voice-activated Lincoln SYNC<sup>®1</sup> shown with the available Navigation Package, you won't be fumbling for your phone or media player. In fact, you won't believe all the things the system can do for you. SYNC understands your voice, so you can control your phone, media and information without taking your eyes from the road or hands from the wheel.

Make calls, hear text messages, access your playlists, genres and artists on your MP3 player or flash drive, and stream music via Bluetooth<sup>®</sup>. Even control smartphone apps like Pandora<sup>®</sup> internet radio by voice with new AppLink. The system also lowers audio volume automatically when a call comes in, so you won't miss one.

THE IRREFUTABLE ELEGANCE  
OF NOT FUMBLING FOR YOUR PHONE.

Light Camel leather-trimmed seats. Olive ash wood. Available Navigation Package.

<sup>1</sup>Driving while distracted can result in loss of vehicle control. Only use mobile phones and other devices, even with voice commands, when it is safe to do so.

2012 LINCOLN MKZ  
6 MKZ HYBRID  lincoln.com

POWER FROM 6 OF ONE, HALF DOZEN OF ANOTHER.

With a 6-cylinder engine and a 6-speed transmission, MKZ delivers a spirited driving experience. The 3.5L Duratec® V6 engine produces 263 horsepower and 249 lb.-ft. of torque. And the standard 6-speed SelectShift Automatic™ transmission gives you the freedom of “manual mode” — handle upshifts and downshifts yourself — with the convenience of an automatic.

Six forward speeds allow for lower gearing, the benefits of which include enhanced performance, acceleration and fuel efficiency. Along with an engaging trip through the gears, MKZ delivers 27 mpg highway.<sup>1</sup>



Lincoln MKZ. Black. Available equipment.

<sup>1</sup>EPA-estimated 18 city/27 hwy/21 combined mpg, Lincoln MKZ FWD.

2012 LINCOLN MKZ  
6 MKZ HYBRID



lincoln.com

## THE MOST EXTRAVAGANT SOUNDS? PEACE AND QUIET.

A seat inside Lincoln MKZ is literally a refuge of tranquility. Acoustic glass, absorption padding and layers of sound-deadening materials make the spacious interior peaceful as well. No matter how disorderly the outside world becomes, you and your passengers can escape within.

It's also the perfect environment for listening to the available THX® II Certified Audio System, specifically designed and acoustically engineered for Lincoln MKZ. Experience true surround sound and astounding clarity while seated on premium, heated and cooled Bridge of Weir™ leather-trimmed front seats.



Dark Charcoal leather-trimmed seats. Walnut swirl wood. Available equipment.

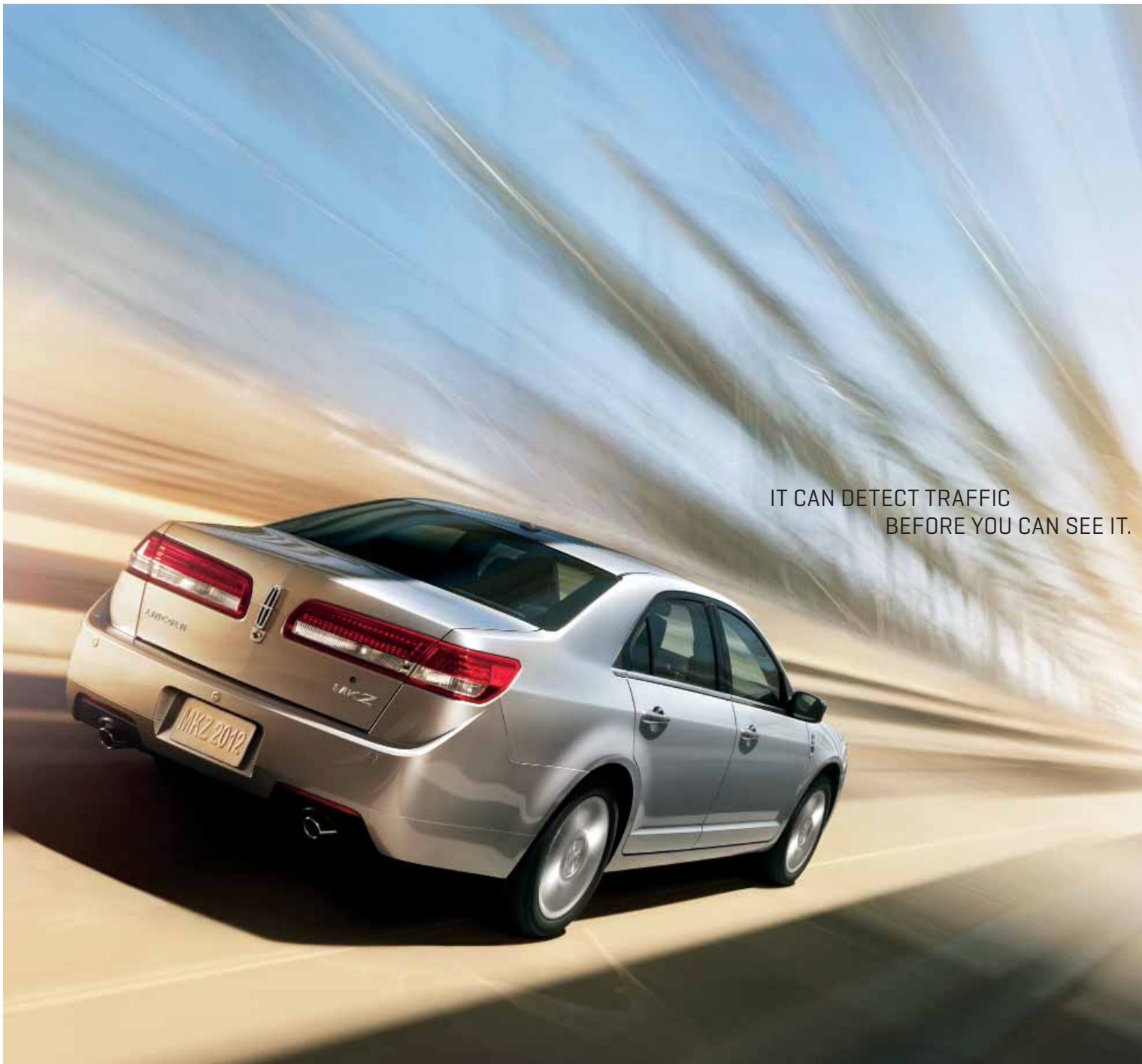
The available, voice-activated Navigation System can tell you exactly where you need to go. It also shows you and reroutes you if necessary. Zoom, scroll and preview your route on a vibrant 8" LCD screen. A 6-month trial subscription to SiriusXM Traffic and Travel Link<sup>1</sup> enhances this capability by continuously updating live traffic information, weather, fuel prices, sports scores and movie times. Plus, enjoy SiriusXM Satellite Radio with a 6-month trial subscription to the "Sirius Select" package. You'll hear the music you want without the hassle of commercials, CDs or playlists. Listen to sports, comedy, talk, news, entertainment and more, coast-to-coast. You can even watch DVDs with premium sound using the available THX<sup>®</sup> II Certified 5.1 Surround Audio System when parked.

YOU SAY WHERE. IT SAYS HOW.

**SiriusXM**)  
SATELLITE RADIO



<sup>1</sup>SiriusXM Satellite Radio, Traffic and Travel Link subscriptions sold separately or as a package after trial expires. SiriusXM Traffic and Travel Link service available in select markets. Subscriptions are governed by SiriusXM Customer Agreement; see [www.siriusxm.com](http://www.siriusxm.com).



IT CAN DETECT TRAFFIC  
BEFORE YOU CAN SEE IT.



Peace of mind is one of life's great luxuries. With available BLIS® [Blind Spot Information System], radar sensors continually monitor each side of the vehicle to help you stay on guard. An amber light in the corresponding sideview mirror<sup>1</sup> alerts you whenever a vehicle is detected in one of your blind spots. Cross-traffic alert utilizes the same sensors to provide you with visible and audible warnings if a vehicle is detected within 45 feet of Lincoln MKZ when backing up in parking situations. And the rear view camera provides additional confidence in situations that require you to reverse.



Lincoln MKZ. Ingot Silver Metallic. Available equipment.

<sup>1</sup>BLIS replaces standard integrated blind spot mirrors.

2012 LINCOLN MKZ  
6 MKZ HYBRID  [lincoln.com](http://lincoln.com)





## THE LUXURY OF BEING ON THE SAFE SIDE.

With Lincoln MKZ, a 2011 IIHS Top Safety Pick,<sup>1</sup> the roof, front, sides and rear have all been cited for good performance in impact testing. Specific structural areas of the high-strength steel safety cage are bolstered against intrusion. Others are designed to absorb crash energy and channel it away from passengers.

Inside, the dual-stage front airbags of our Personal Safety System™ help protect the driver and front passenger. Side-curtain airbags deploy from the headliner to provide coverage for outboard passengers in both rows in certain types of side-impact or rollover events. The SOS Post-Crash Alert System™ assists first responders in locating the vehicle when an airbag deploys.<sup>2</sup>

Lincoln MKZ. Sterling Gray Metallic.

<sup>1</sup>Insurance Institute for Highway Safety (IIHS). <sup>2</sup>SOS hardware may become damaged or the battery may lose power in a crash, which could prevent operation. Not all crashes will activate an airbag or safety belt pretensioner.

2012 LINCOLN MKZ  
6 MKZ HYBRID  [lincoln.com](http://lincoln.com)

## CONFIDENCE COMES ALONG ON EVERY TRIP.

Available Intelligent AWD provides additional confidence in various driving conditions, and anytime an extra measure of control is required. And to help enhance visibility, adaptive HID headlamps are available. Brighter than halogen, they point in the direction you turn the steering wheel to help you get the best possible look at the road ahead.

When driving Lincoln MKZ, you can be certain you are prepared for a wide variety of possible driving conditions. The standard traction control system automatically applies the brakes and modulates engine power whenever it detects wheel slip.<sup>1</sup>



Lincoln MKZ. White Platinum Metallic Tri-coat. Available equipment.

<sup>1</sup>Remember that even advanced technology cannot overcome the laws of physics. It's always possible to lose control of a vehicle due to inappropriate driver input for the conditions.

2012 LINCOLN MKZ  
6 MKZ HYBRID



lincoln.com

## STANDARD LUXURY FEATURES: EQUIPMENT GROUP 100A

### ENGINE

- 3.5L DOHC 24-valve Duratec® aluminum V6
- 263 hp @ 6,250 rpm/249 lb.-ft. of torque @ 4,500 rpm
- Intake variable cam timing (iVCT) and electronic throttle control
- 10.3:1 compression ratio
- Sequential multiport electronic fuel injection
- Stainless steel exhaust system with dual chrome exhaust tips
- 2012 EPA-estimated fuel economy
  - FWD 18 city/27 hwy/21 combined mpg [17.5-gal. capacity]
  - AWD 16 city/25 hwy/19 combined mpg [16.5-gal. capacity]

### DRIVETRAIN

- 6-speed SelectShift Automatic™ transmission
- Front-wheel drive (FWD)

### WHEELS | TIRES

- 17" 9-spoke machined aluminum wheels with painted pockets
- P225/50R17 all-season V-rated performance tires

### BRAKES

- Anti-Lock Brake System (ABS)
- Electronic brakeforce distribution (EBD)
- Power 4-wheel disc brakes with ventilated rotors

### SUSPENSION | STEERING

- 24-mm front and 17-mm rear stabilizer bars
- Independent short- and long-arm front suspension with coil springs over shocks
- Multilink independent rear suspension
- Power rack-and-pinion steering

### EXTERIOR

- Chrome door handles
- Easy Fuel® capless fuel filler
- Fog lamps with bright bezels
- Light-emitting diode (LED) taillamps
- Lincoln split-wing grille
- Power, heated, chrome-capped sideview mirrors with integrated blind spot mirrors, security approach lamps, memory and auto-dimming driver's side
- Quad-beam halogen headlamps with autolamp automatic on-off feature with delay
- Rear-window defroster
- Reverse Sensing System
- Solar-tinted glass
- Speed-sensitive windshield wipers

### INSTRUMENTATION | DRIVER CONTROLS

- Auto-dimming rearview mirror
- Power windows with global open and one-touch-up/-down for driver and front passenger
- Steering wheel-mounted cruise control, media controls and secondary audio controls
- Universal garage door opener
- White LED-backlit instrument cluster with speedometer, tachometer, fuel level gauge, coolant temperature gauge, and message center

### SEATING

- 5-passenger seating
- 10-way power driver's seat with power lumbar and memory feature
- 10-way power front-passenger seat with power lumbar
- Bridge of Weir™ leather-trimmed seating
- Heated and cooled driver and front-passenger seats
- 60/40 split-fold rear seat with center armrest and dual cupholders

### INTERIOR

- 12-volt powerpoints [2]
- Accessory delay for power features
- Cabin air filtration system
- Dual-zone electronic automatic temperature control
- Front center floor console with adjustable armrest and two-tiered storage
- Genuine wood accents in walnut swirl or olive ash on the instrument panel and door-trim inserts
- Illuminated Entry System with theater-dimming feature
- Leather-wrapped shift knob
- Leather-wrapped steering wheel with genuine wood accent in walnut swirl or olive ash
- Remote, power decklid release
- Tilt/telescoping steering column

### AUDIO | COMMUNICATION SYSTEMS

- Auxiliary audio input jack in front center floor console
- Lincoln SYNC® voice-activated, in-vehicle connectivity system
- Premium AM/FM audio system with 6-disc in-dash CD changer, MP3 capability and 9 speakers
- SiriusXM Satellite Radio with 6-month trial subscription

### SAFETY | SECURITY

- Personal Safety System™ for driver and front passenger with dual-stage front airbags<sup>1</sup>; safety belt pretensioners, safety belt energy-management retractors, safety belt usage sensors, driver's seat position sensor, crash severity sensor, restraint control module and Front-Passenger Sensing System
- AdvanceTrac® electronic stability control with brake-actuated traction control
- Belt-Minder® front safety belt reminder
- Child-safety rear door locks
- Emergency glow-in-the-dark, in-trunk release handle
- Front-seat side airbags<sup>1</sup>
- Integrated keyhead transmitter remotes [2]
- Lower Anchors and Tether Anchors for Children [LATCH]
- MyKey®
- Perimeter anti-theft system
- Power door locks
- SecuriCode™ keyless entry keypad
- SecuriLock® Passive Anti-Theft System
- Side-curtain airbags<sup>1</sup> with roll-fold technology
- Side-intrusion door beams
- SOS Post-Crash Alert System™
- Tire Pressure Monitoring System [excludes spare]

<sup>1</sup>Always wear your safety belt and secure children in the rear seat.

## LINCOLN MKZ HYBRID: EQUIPMENT GROUP 200A

Includes content of Equipment Group 100A, plus:

- 2.5L iVCT Atkinson-cycle I-4 engine with permanent-magnet AC-synchronous electric motor
- 191 net horsepower
- Electronically controlled continuously variable transmission (eCVT)
- 275-volt sealed nickel-metal-hydrate (NiMH) battery
- Driver's knee airbag<sup>1</sup>
- Fixed rear seat back
- Regenerative Braking System
- SmartGauge™ with EcoGuide instrument cluster with 2 configurable LCD screens and message center
- 2012 EPA-estimated fuel economy  
FWD 41 city/36 hwy/39 combined mpg (17.5-gal. capacity)



## MEASUREMENTS

Length	189.8"
Wheelbase	107.4"
Width [excluding mirrors]	72.2"
Width [including mirrors]	80.1"
Height	56.9"
Head room [front/rear]	38.7"/37.8"
Shoulder room [front/rear]	57.2"/55.8"
Hip room [front/rear]	54.0"/53.5"
Leg room [front/rear]	42.3"/36.7"
Passenger volume	99.0 cu. ft.
Cargo volume [Lincoln MKZ/Lincoln MKZ Hybrid]	16.5 cu. ft./11.8 cu. ft.
Total interior volume [Lincoln MKZ/ Lincoln MKZ Hybrid]	115.5 cu. ft. /110.8 cu. ft.

**LINCOLN AUTOMOTIVE FINANCIAL SERVICES** Plans to launch in available states in the 3rd quarter of 2011. Choose the vehicle you want. Whether you decide to lease or finance, you'll find the choices that are right for you. Ask your Lincoln Dealer for details.

**INSURANCE SERVICES** Get Lincoln quality in your auto insurance. Our program offers industry-leading benefits and competitive rates. Call 1-866-329-4367 for a no-obligation quote.

**LINCOLN EXTENDED SERVICE PLAN** For a purchase or lease, the Lincoln Extended Service Plan (ESP) gives you "Peace-of-Mind" protection designed to cover key vehicle components and protect you from the cost of unexpected repairs. Ask your dealer for a Lincoln ESP, the only service contract backed exclusively by Lincoln and honored at all Lincoln dealerships.

**GENUINE LINCOLN ACCESSORIES** will be warranted for whichever provides you the greatest benefit: 12 months or 12,000 miles (whichever occurs first), or the remainder of your Bumper-to-Bumper 4-year/50,000-mile New Vehicle Limited Warranty. Lincoln Licensed Accessories (LLA) are warranted by the accessory manufacturer's warranty. LLA are fully designed and developed by the accessory manufacturer and have not been designed or tested to Ford Motor Company engineering requirements. Contact your Lincoln Dealer for details and/or a copy of all limited warranties.

**COMPLIMENTARY MAINTENANCE** In addition to being one of the most technologically advanced and luxurious vehicles on the road, the new 2012 Lincoln MKZ now includes no-charge, 4-year/50,000-mile maintenance. Maintenance items include oil changes, tire rotations and vehicle inspections. Coverage includes a maximum of 8 regularly scheduled maintenance services. See dealer for qualifications and complete details.

**LINCOLN WARRANTIES** Additional peace of mind comes from a 4-year/50,000-mile Bumper-to-Bumper Warranty that covers repair, replacement or adjustment of parts at no additional cost, as well as a 6-year/70,000-mile Powertrain Warranty which features no deductible and is fully transferable. See dealer for limited warranty details.

**ROADSIDE ASSISTANCE** for 6 years or 70,000 miles provides the security of knowing that help may be only a phone call away should you run out of fuel, lock yourself out of the vehicle or need towing. Your Lincoln Dealer will provide complete details.

The Bluetooth word mark is a trademark of the Bluetooth SIG, Inc.

Microsoft is a registered trademark of Microsoft Corporation.

THX and the THX logo are trademarks of THX Ltd., which are registered in some jurisdictions. All rights reserved.

Bridge of Weir is a trademark of Bridge of Weir Leather Company Limited.

Sirius U.S. Satellite Service available in the 48 contiguous U.S.A. and D.C. Sirius, XM and all related marks and logos are trademarks of Sirius XM Radio Inc.

HD Radio is a proprietary trademark of iBiquity Digital Corp.

Miko is a registered trademark of Miko s.r.l.

Comparisons based on 2011/2012 competitive models (class is Luxury Midsize Sedans), publicly available information and Ford certification data at time of release. Some features discussed may be optional. Vehicles shown may contain optional equipment. Features shown may be offered only in combination with other options or subject to additional ordering requirements or limitations. Dimensions shown may vary due to optional features and/or production variability. Following release of the PDF, certain changes in standard equipment, options and the like, or product delays may have occurred which would not be included in these pages. Your Lincoln Dealer is the best source of up-to-date information. Lincoln reserves the right to change product specifications at any time without incurring obligations.



## AVAILABLE LUXURY PACKAGES

### NAVIGATION PACKAGE: EQUIPMENT GROUP 101A (LINCOLN MKZ) OR 201A (LINCOLN MKZ Hybrid)

- Voice-activated, hard drive-based Navigation System with 8" high-resolution display; integrated SiriusXM Satellite Radio, Traffic™ and Travel Link™ (with 6-month trial subscription) for continuously updated traffic, weather and fuel price updates; HD Radio™ Technology; driver-configurable home screen, plus hard disc drive for music storage; Lincoln MKZ includes premium AM/FM stereo/single-CD/DVD/Jukebox with MP3 capability, 14 speakers, 600 watts of power and multi-channel amplifier; Lincoln MKZ Hybrid includes THX® II Certified 5.1 Surround Audio System with AM/FM stereo/single-CD/DVD/Jukebox with MP3 capability, 14 speakers, 600 watts of power and multi-channel amplifier
- BLIS® (Blind Spot Information System) with cross-traffic alert<sup>1</sup>
- Rear view camera

### ULTIMATE PACKAGE: EQUIPMENT GROUP 102A (LINCOLN MKZ) OR 202A (LINCOLN MKZ Hybrid)

- 17" 9-spoke chrome-clad aluminum wheels
- Adaptive HID headlamps
- Ambient lighting
- Navigation Package
- Power moonroof
- Rain-sensing windshield wipers
- THX II Certified 5.1 Surround Audio System<sup>2</sup>

### CHROME WHEEL & MOONROOF DISCOUNT PACKAGE<sup>3</sup>

- 17" 9-spoke chrome-clad aluminum wheels
- Power moonroof

### INTERIOR ALUMINUM TRIM PACKAGE

- Aluminum trim on the instrument panel and front and rear door-trim inserts, with full leather-wrapped steering wheel

### SPORT APPEARANCE PACKAGE<sup>4</sup>

- 18" 10-spoke polished aluminum wheels
- P225/45R18 V-rated performance tires
- Body-color door handles
- Bridge of Weir™ Dark Charcoal leather-trimmed seats with Cashmere-colored tuxedo seam and piping
- Darkened headlamp treatment
- Interior Aluminum Trim Package
- Sport-tuned suspension
- Unique chrome grille with Dark Shadow Gray accented bars
- Unique front floor mats with Lincoln MKZ badge

### EXECUTIVE PACKAGE<sup>5</sup>

- Bridge of Weir leather-trimmed, heated and cooled front seats in Dark Charcoal with Miko® Suede inserts and tuxedo seam, or Cashmere-colored with leather seat inserts and tuxedo seam
- Front premium carpeted floor mats with Lincoln Star logo and Miko Suede edge
- Genuine walnut swirl wood accents on the instrument panel and center console
- Unique door-trim inserts with accent stitching
- Unique front center console armrest insert

## AVAILABLE EQUIPMENT

- 17" 9-spoke chrome-clad aluminum wheels<sup>5</sup>
- All-weather floor mats
- Intelligent all-wheel drive (AWD)<sup>6</sup>
- Power moonroof
- Premium floor mats with embroidered Lincoln Star and suede edging, plus trunk mat
- Remote start system
- THX II Certified 5.1 Surround Audio System (requires Equipment Group 101A)

## AVAILABLE LINCOLN CUSTOM ACCESSORIES

- Remote start systems
- Dual head restraint DVD<sup>7</sup>
- Park assist systems<sup>7</sup>
- Hood, moonroof and side window deflectors
- Racks and carriers<sup>7</sup>
- Full vehicle covers<sup>7</sup>
- Locking fuel plug
- Splash guards
- Interior light kit
- Cargo organizers and protectors
- All-weather floor mats
- Sport pedals
- Ash cup/coin holder
- 18" 5-spoke chrome wheels
- Wheel lock kit

To learn more about Lincoln Custom Accessories and to shop online, visit [lincolnacccessories.com](http://lincolnacccessories.com).



- A. 17" 9-SPOKE MACHINED ALUMINUM WITH PAINTED POCKETS | STANDARD
- B. 17" 9-SPOKE CHROME-CLAD ALUMINUM | OPTIONAL
- C. 18" 10-SPOKE POLISHED ALUMINUM | STANDARD WITH SPORT APPEARANCE PACKAGE

<sup>1</sup>BLIS replaces standard integrated blind spot mirrors. <sup>2</sup>Equipment Group 102A only. <sup>3</sup>Not available with Equipment Group 102A or 202A. <sup>4</sup>Not available with Equipment Group 100A or Lincoln MKZ Hybrid.

<sup>5</sup>Not available with Equipment Group 100A or 200A. <sup>6</sup>Not available on Lincoln MKZ Hybrid. <sup>7</sup>Lincoln Licensed Accessory.



## WITH LINCOLN OWNERSHIP, ADVANTAGES COME STANDARD.

Backed by our strong network of dealers, we are committed to providing amenities and benefits that make Lincoln ownership a premium and dependable experience. And now, Lincoln MKZ has been ranked the "Most Dependable Entry Premium Car," 2 years in a row in the J.D. Power and Associates 2010-2011 Vehicle Dependability Studies.<sup>1</sup>

**COMPLIMENTARY MAINTENANCE<sup>2</sup>** In addition to being one of the most technologically advanced and luxurious vehicles on the road, the new 2012 Lincoln MKZ now includes no-charge, 4-year/50,000-mile maintenance. Maintenance items include oil changes, tire rotations and vehicle inspections. See dealer for details.

**LINCOLN WARRANTIES** Your 2012 Lincoln MKZ comes with a 4-year/50,000-mile Bumper-To-Bumper Warranty as well as a 6-year/70,000-mile Powertrain Warranty. Safety Restraint System and Corrosion coverage are also provided. See dealer for limited warranty details.

**COMPLIMENTARY SERVICE LOANER<sup>3</sup>** Whenever you bring your 2012 Lincoln MKZ to a Lincoln Dealer for a service covered by warranty, you will be provided with a complimentary Lincoln service loaner vehicle. See dealer for details.



<sup>1</sup>The Lincoln MKZ received the lowest number of problems per 100 vehicles among entry premium cars in the proprietary J.D. Power and Associates 2010-2011 Vehicle Dependability Studies<sup>SM</sup> 2011 study based on 43,779 consumer responses measuring problems consumers experienced in the past 12 months with 3-year-old vehicles (2008 model-year cars and trucks). Proprietary study results are based on experiences and perceptions of consumers surveyed October-December 2010. Your experiences may vary. Visit [jdpower.com](http://jdpower.com). <sup>2</sup>4-year/50,000-mile Maintenance Plan. Coverage includes a maximum of 8 regularly scheduled maintenance services. See dealer for qualifications and complete details. <sup>3</sup>Availability depends on dealership participation. See dealer for details.

Available with all exterior colors



DARK CHARCOAL LEATHER WITH DARK RUST PIPING | WALNUT SWIRL WOOD

Available with all exterior colors except: Ingot Silver Metallic



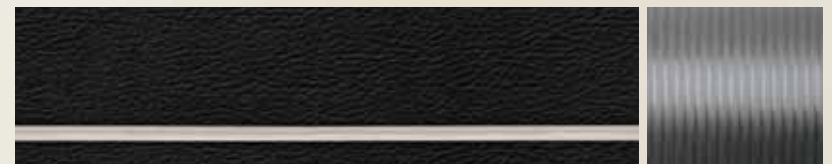
LIGHT CAMEL LEATHER WITH AGATE PIPING | OLIVE ASH WOOD

Interior Aluminum Trim Package available with all exterior colors except: Steel Blue Metallic



DARK CHARCOAL LEATHER WITH DARK CHARCOAL PIPING | ALUMINUM TRIM

Sport Appearance Package available with all exterior colors except: Steel Blue Metallic  
Cinnamon Metallic



DARK CHARCOAL LEATHER AND SEAM WITH CASHMERE-COLORED PIPING | ALUMINUM TRIM

Executive Package  
Dark Charcoal trim is available with all exterior colors except:  
Steel Blue Metallic  
Cinnamon Metallic  
Cashmere-colored trim is available with all exterior colors except:  
Steel Blue Metallic



DARK CHARCOAL OR CASHMERE-COLORED LEATHER AND SEAM | WALNUT SWIRL WOOD

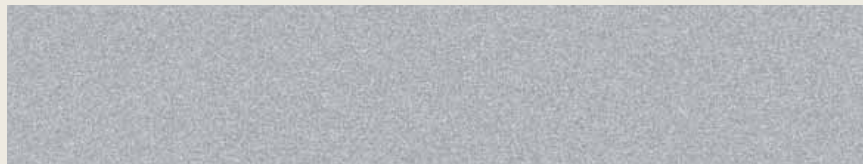
LINCOLN MKZ + LINCOLN MKZ HYBRID COLORS



WHITE PLATINUM METALLIC TRI-COAT<sup>1</sup>



CRYSTAL CHAMPAGNE METALLIC TRI-COAT<sup>1</sup>



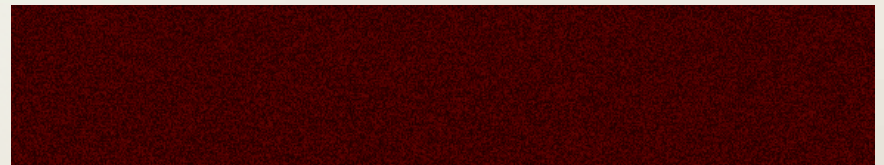
INGOT SILVER METALLIC



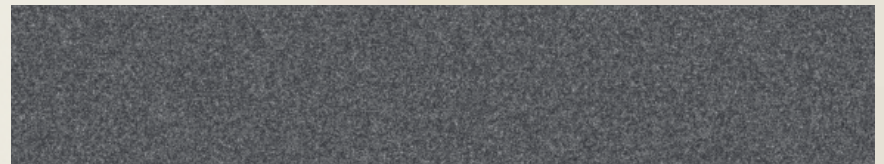
STEEL BLUE METALLIC



RED CANDY METALLIC TINTED CLEARCOAT<sup>1,2</sup>



CINNAMON METALLIC<sup>2</sup>



STERLING GRAY METALLIC



BLACK

Colors are representative only. <sup>1</sup>Additional charge. <sup>2</sup>Late availability.