



**SEAT** Exeo Range - Model Year 2012

---

## **SEAT** Exeo Range

- 4** Exeo Range
- 6** Exeo
- 8** Exeo ST
- 12** Interior design - Exeo
- 14** Interior space - Exeo ST
- 16** Interior quality - Exeo & Exeo ST TECH
- 18** Special features
- 20** Engines
- 22** Safety
- 24** Trims
- 30** Option highlights
- 32** Equipment availability
- 34** Technical specifications
- 36** Main accessories
- 38** Upholsteries
- 42** Wheels
- 43** Colours
- 44** Club SEAT
- 46** Dimensions / Engines/Versions
- 47** SEAT information





## A CLASS OF ITS OWN.

Welcome to the Exeo and the start of many sensational experiences. Derived from the Latin word for 'to go beyond', the Exeo and Exeo Sport Tourer deliver the highest quality, design and performance. To appreciate their true nature is to sit in the driver's seat. Hear the refined roar of the TSI or TDI CR (Common Rail) engine. Feel the premium materials and building precision wrapped around you. You'll quickly realise that the Exeo is more than just a car. It's an impression that remains hours after you've silenced the engine.



## TRAVEL BUSINESS CLASS EVERYWHERE YOU GO.

The Exeo's fluid exterior underlines its athletic spirit. The unmistakable grille is the largest you'll find on any SEAT, and it's just been redesigned to give the Exeo an even more dynamic, modern feel. Considered touches are everywhere, from dark tinted windows right down to the Sport's new 18-inch 'Quartz' alloy wheels. And bi-xenon headlights now come integrated with new LED lights as well. As always, the Adaptive Front-lighting System (AFS) makes the headlights follow the motion of the steering wheel, so you have an optimized field of vision. Looking beyond: something you're used to doing everyday. The Exeo is more than just an investment in your appearance. It's an investment in confidence.











## BUSINESS AND PLEASURE IN ONE.

The Exeo Sport Tourer is the next step in 'going beyond'. Like the saloon, the estate version of the Exeo delivers class-leading sophistication and technological advancement – only here, it's not business as usual. The Exeo ST was designed for those who need room for more than just a leather briefcase and a topcoat. In the balancing act of work and family life, the Exeo ST finds the perfect balance between the two. Whatever you do, wherever you go, the Exeo ST offers the outstanding quality to get you there in style.

## DESIGNED FOR PLACES TO GO, PEOPLE TO SEE.

It's true what they say about all work and no play. So the Exeo ST finds the perfect balance between the two, combining stylish, refined features with the space and functionality that work for you from nine-to-five and beyond. In the back, the rear hatch has been designed to maximise interior space. LED lights in the rear, and new LED lights in the front\*, will help you leave a brilliant first impression wherever you go. There are 10 distinguished colours to choose from, including the new Monsoon Grey. And because appearance is everything, exterior mirrors, door handles and mouldings all come in matching body colour.







## ADVANCED CIVILISATION.

From the top-quality leather finish of the heated front seats, to the double-glazed windows that reduce noise to a hum, we designed the Exeo's interior to be as comfortable as it is pleasing to the eye. We've even added new upholstery options to suit your distinguishing taste. Dual-zone climate control provides independent temperature control on driver and passenger sides, and a sophisticated air quality sensor ensures that only the freshest air enters the cabin – it closes the external air vents when high levels of pollutants are detected. An optional electric tilt and slide sunroof features a solar panel to power the ventilation system – it even keeps working after the engine is turned off. How's that for going further?







## A LOT OF WORK WENT INTO RELAXING.

We've done a lot of hard work to ensure you'll feel as comfortable as possible, starting with the leather front seats with added lumbar support. For those who like things just so, the driver's seat has a memory function that remembers the seating positions of up to four drivers. Dual-zone climate control will help driver and passenger stay comfortable in their own temperature zone. The parking sensors make parking easier by detecting obstacles behind you, and a rain sensor activates the wipers automatically. Under the bonnet, a range of petrol and diesel engines will tempt your ears as much as the 10-speaker BOSE® sound system. And at the touch of a button, an on-board trip computer lets you know the vehicle's average speed, fuel consumption and time spent on the road. It even advises you to take a break from driving after two hours. Easier said than done.



## INTRODUCING OUR 'TECH' SPEC. BUSINESS AND PLEASURE IN ONE.

For those who like an extra touch of quality in their ride, here's the Tech models. These models increase the high standard of SEAT spec to give you some enviable additions. There's the luxurious black leather upholstery, the high quality BOSE® premium audio system, satellite navigation for an easier drive, and iPod® connectivity for every modern driver. At a fraction of the price of adding these options individually, the Tech models are the smartest way to add those optional extras you always wanted.





Never get lost again: Satellite Navigation System includes DVD-based dynamic route guidance, 6.5" colour screen, 3D map display, SD card slots for MP3 playback and upgraded colour dash display.



Listen to your favourite tunes on your iPod®.



The high performance, 10-speaker BOSE® system with digital amplifier and BOSE® Digital Signal Processing, AudioPilot noise compensation technology and five channels of customised equalisation ensuring crisp musical detail and exceptional sound reproduction.

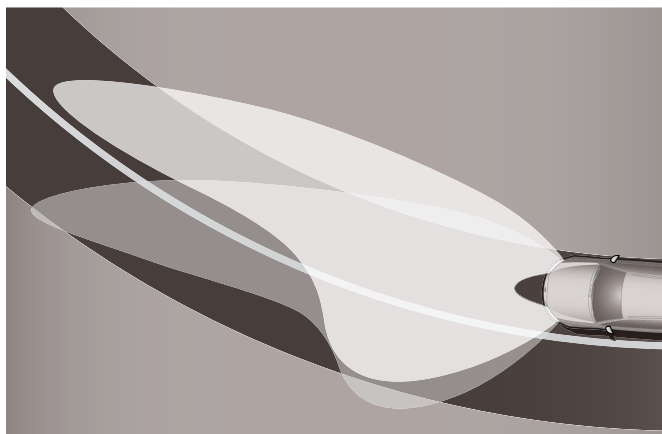
# SPECIAL FEATURES



Bi-xenon headlights with LED daytime running lights, AFS, automatic range adjustment and headlight washer system.



Rear LED lights (standard with bi-xenon headlights).



Adaptive Front-lighting System (AFS).



Solar sunroof (slide/tilt).



7-speed multitronic gearshift.



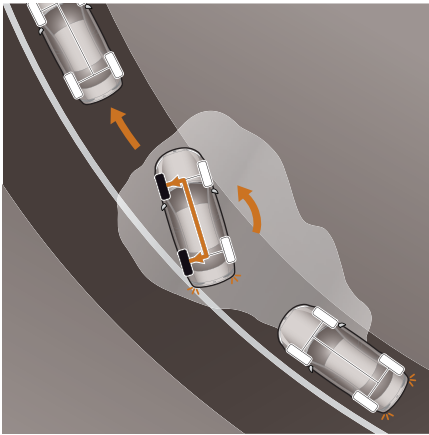
Cruise control.



Electrically folding, adjustable and heated door mirrors, and front and rear electric windows.



The rear seat armrest houses two cup holders.



Electronic Stability Programme (ESP).



Rear side airbags add extra safety.



High performance, 10-speaker BOSE® sound system, specially designed for the Exeo range\*.



Twelve-way electric front seats and memory function for drivers seat (up to 4 positions, part of Electric Seat Pack).

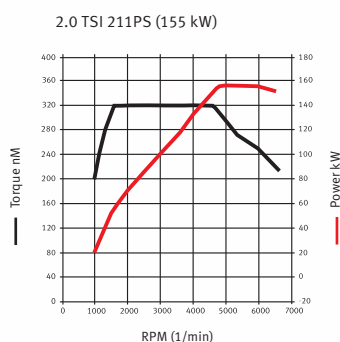
\* Standard on Tech models.



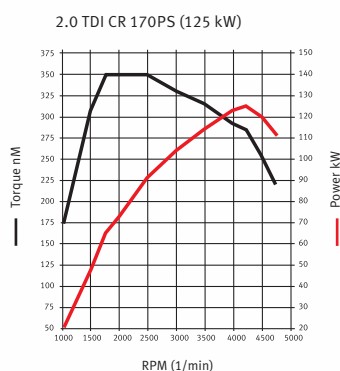
# ENOUGH HORSEPOWER TO ESCAPE THE HEAVIEST WORK WEEK.

When the ride is this exciting, you might want to clear your schedule for the afternoon. All diesel engines are 2.0 TDIs that offer everything from more power (up to 170PS) to lower emissions (129\* g/km). Common Rail technology renders them quieter, lighter and more efficient, while their latest generation turbo-charged direct injection technology provides phenomenal pace and torque. And our latest addition is the state-of-the-art electronically controlled multitronic transmission which can seamlessly and infinitely vary the gear ratio to offer the driver the perfect balance of torque and speed.

Representing the petrol choice is the powerful yet highly efficient 2.0 TSI direct injection engine with a whopping 211PS. Refinement and performance in one: five words that sum up the Exeo range just about right.



Make a statement with the 2.0 TSI 211PS petrol engine, the most powerful in the Exeo range.



All diesel engines are state-of-the-art 2.0 TDI's fitted with soot-emission reducing Diesel Particulate Filters (DPF).

	Urban driving mpg (l/100km) <b>Exeo // Exeo ST</b>	Extra urban driving mpg (l/100 km) <b>Exeo // Exeo ST</b>	Combined consumption mpg (l/100 km) <b>Exeo // Exeo ST</b>	CO <sub>2</sub> emissions (g/km) <b>Exeo // Exeo ST</b>
<b>PETROL</b>				
2.0 TSI 211PS	29.4 (9.6) // 29.1 (9.7)	53.3 (5.3) // 52.3 (5.4)	39.8 (7.1) // 40.4 (7.0)	159 // 162
<b>DIESEL</b>				
2.0 TDI CR 120PS**	41.5 (6.8) // 39.8 (7.1)	74.3 (3.8) // 74.3 (3.8)	58.9 (4.8) // 56.5 (5.0)	129 // 132
2.0 TDI CR 143PS**	41.5 (6.8) // 39.8 (7.1)	74.3 (3.8) // 74.3 (3.8)	58.9 (4.8) // 56.5 (5.0)	129 // 132
2.0 TDI CR 143PS Multitronic**	38.7 (7.3) // 38.7 (7.3)	61.4 (4.6) // 61.4 (4.6)	51.4 (5.5) // 51.4 (5.5)	146 // 146
2.0 TDI CR 170PS**	37.2 (7.6) // 37.2 (7.6)	67.3 (4.2) // 67.3 (4.2)	52.3 (5.4) // 52.3 (5.4)	142 // 142

\* Exeo data. 132 g/km for Exeo ST, provisional data. \*\* Provisional emissions and fuel consumption data.



## SAFETY: YOUR BIGGEST ASSET.

Feeling safe is as important as feeling sophisticated. Which is why the Exeo and Exeo ST come equipped with standard 6 airbags and optional rear side thorax airbags. Then there's the ISOFIX anchorage and Top Tether straps for secure child seat mounting. The Exeo range also comes equipped with the newest generation Anti-lock Braking System (ABS), Electronic Stability Programme (ESP) and Emergency Brake Assist (EBA) as standard. These systems monitor information from the steering wheel, tyres, brakes, accelerator and other on-board sensors, making precise adjustments to the vehicle direction, helping you to hold the perfect line – and successfully blurring the line between business and pleasure.



# SEAT EXEO/EXEO ST

## S

- 16" 'Morfeo' alloy wheels
- Dual-zone climate control
- Front & rear electric windows (one touch with anti-squeeze)
- Electrically adjustable, heated & folding door mirrors
- Cruise control
- MP3 compatible CD player
- 4 speakers
- Integrated Bluetooth® handsfree system with voice control
- Steering wheel mounted audio/phone controls
- AUX-in connection
- USB port (in glove compartment)
- Multi-function display including trip computer
- Height & reach adjustable steering wheel
- Power assisted steering
- Six speed gearbox
- Front folding armrest with storage compartment
- Manual height adjustment for front seats
- Ashtray and cigarette lighter
- Driver & front passenger airbags
- Front passenger airbag de-activation
- Front side airbags
- Curtain airbags
- Driver's seatbelt reminder
- Front active headrests
- ESP + EBA
- ISOFIX (with Top Tether) child seat anchorage points in rear
- Remote central locking with deadlocks
- Electronic engine immobiliser
- Volumetric alarm with back-up horn & tilt sensor
- Body coloured door handles & mirrors
- Integrated front fog lights
- Roof rails (black)\*
- Storage boxes under front seats\*
- Retractable luggage compartment cover\*
- 12 volt supply in boot\*



\*Exeo ST only





# SEAT EXEO/EXEO ST SE/SE TECH\*

- Dual-zone climate control
- Front & rear electric windows (one touch with anti-squeeze)
- Electrically adjustable, heated & folding door mirrors
- Cruise control
- MP3 compatible CD player
- Integrated Bluetooth® handsfree system with voice control
- Steering wheel mounted audio/phone controls
- AUX-in connection
- USB port (in glove compartment)
- Multi-function display including trip computer
- Height & reach adjustable steering wheel
- Manual height adjustment for front seats
- Driver & front passenger airbags
- Front passenger airbag de-activation
- Front side airbags
- Curtain airbags
- Front active headrests
- ESP + EBA
- ISOFIX (with Top Tether) child seat anchorage points in rear
- Remote central locking with deadlocks
- Storage boxes under front seats\*\*
- Retractable luggage compartment cover\*\*
- 12 volt supply in boot\*\*

#### And in addition to S:

- 17" 'Elegance' alloy wheels
- Rain sensor (auto-wipers)
- Acoustic windscreen
- Coming home headlight function
- Light sensor (auto-lights)
- Rear net partition\*\*
- Auto dimming rear view mirror
- Front folding armrest with storage compartment and cupholders
- Rear parking sensors
- Tyre pressure monitoring
- 8 speakers
- Ambient Light Pack
- Manually adjustable lumbar support for front seats
- Leather steering wheel & gearknob
- Chrome side window trims
- Aluminium door sill trims
- Interior trim & colour differentiation
- Roof rails (stainless steel)\*\*

\* Tech models add as standard satellite navigation, black leather upholstery, BOSE® premium audio system and iPod® connection. Otherwise, option availability is as per respective SE models.

\*\* Exeo ST only.



Model shown with optional tan/black leather upholstery and satellite navigation system.





# SEAT EXEO/EXEO ST SPORT / SPORT TECH\*

- Dual-zone climate control
- Front & rear electric windows (one touch with anti-squeeze)
- Electrically adjustable, heated & folding door mirrors
- Cruise control
- MP3 compatible CD player
- 8 speakers
- Integrated Bluetooth® handsfree system with voice control
- Steering wheel mounted audio/phone controls
- AUX-in connection
- USB port (in glove compartment)
- Multi-function display including trip computer
- Front folding armrest with storage compartment
- Driver & front passenger airbags
- Front passenger airbag de-activation
- Front side airbags
- Curtain airbags
- Front active headrests
- ESP + EBA
- ISOFIX (with Top Tether) child seat anchorage points in rear
- Rain sensor (auto-wipers)
- Acoustic windscreen
- Coming home headlight function
- Light sensor (auto-lights)
- Auto dimming rear view mirror
- Rear parking sensors
- Tyre pressure monitoring
- Ambient Light Pack
- Manually adjustable lumbar support for front seats
- Leather steering wheel & gearknob
- Chrome side window trims
- Aluminium door sill trims
- Storage boxes under front seats\*\*
- Rear net partition\*\*
- Retractable luggage compartment cover\*\*
- 12 volt supply in boot\*\*
- Roof rails (stainless steel)\*\*

#### And in addition to SE:

- 18" 'Quartz' alloy wheels
- Sports seats
- Sport suspension
- Sports lower door mouldings
- Bi-xenon headlights with LED daytime running lights, AFS, LED taillights, automatic range adjustment and headlight washer system
- Dark tinted rear windows
- Interior trim & colour differentiation

*\*Tech models add as standard satellite navigation, black leather upholstery, BOSE® premium audio system and iPod® connection. Otherwise, option availability is as per respective Sport models.*

*\*\*Exeo ST only.*





# OPTION HIGHLIGHTS



Bi-xenon headlights with LED daytime running lights, AFS, automatic range adjustment and headlight washer system. SE Sp



Rear LED lights. (standard with bi-xenon headlights) SE Sp



Cream Leather upholstery. SE



Black Leather upholstery.\* SE Sp



Twelve-way electric front seats and memory function for drivers seat (up to 4 positions, part of Electric Seat Pack). SE Sp



Electric glass sunroof (slide & tilt). SE Sp



Solar sunroof (slide & tilt). SE Sp



Air quality sensor with automatic recirculation function (part of the Convenience Pack).

SE SP



BOSE® premium sound system.\*

SE SP



Storage Pack including load through facility with integrated ski bag.

S SE SP



Listen to your favourite tunes on your iPod®\*. SE SP

SE SP



Rear side airbags add extra safety.

S SE SP



SEAT Media System E\* with 6.5" colour screen. SE SP

SE SP

\*Standard on Tech models.

# EQUIPMENT AVAILABILITY

EXTERIOR EQUIPMENT	S	SE	Sport
Body coloured door handles and mirrors	■	■	■
Chrome side window trims	-	■	■
Aluminium door sill trims	-	■	■
Gloss black B-pillars	-	■	■
Roof rails <sup>1</sup>	Black	Stainless Steel	Stainless Steel
Dark tinted rear windows	-	-	■
Sports lower door mouldings	-	-	■
Twin exhaust pipes	■	■	■
Chrome finished twin exhaust pipes	-	-	TDI CR 170PS only
Chrome finished corner exit exhaust pipes	-	-	TSI 211PS only

INTERIOR EQUIPMENT	S	SE	Sport
Front floor mats	■	■	■
Rear floor mats	■	■	-
Illuminated glove compartment (lockable)	■	■	■
Front cup holder	■	■	■
Ashtray & cigarette lighter	■	■	■
Front folding armrest with storage compartment	■	■	■
Storage boxes under front seats <sup>1</sup>	■	■	■
Pocket on front seat backrests	-	■	■
Rear folding armrest with storage compartment	■	-	-
Rear folding armrest with storage compartment and cup holders	-	■	■
Front & rear reading lights	■	■	■
<b>Ambient Light Pack:</b> Includes illuminated centre console, ashtray, front armrest compartment, footwells, interior door handles, front & rear door sills	-	■	■
Rear net partition <sup>1</sup>	-	■	■
Retractable luggage compartment cover <sup>1</sup>	■	■	■
12 volt supply in boot <sup>1</sup>	■	■	■
Hooks in boot	■	■	■

SEATS & TRIMS	S	SE	Sport
Sports seats	-	-	■
Manual height adjustment for front seats	■	■	■
Manually adjustable lumbar support for front seats	-	■	■
Assymmetric split folding rear seats	■	■	■
'DELIA' patterned cloth upholstery	■	-	-
'BOX' patterned cloth upholstery	-	■	-
'SOREY' patterned cloth upholstery	-	-	■
Black Leather upholstery	-	Tech models <sup>2</sup>	Tech models <sup>2</sup>
'KIBO' door & dashboard decorative inserts	■	-	-
'VULKANO' door & dashboard decorative inserts	-	■	-
'GLOSSY BLACK' door & dashboard decorative inserts	-	-	■
Leather steering wheel & gearknob	-	■	■

FUNCTIONAL & MECHANICAL	S	SE	Sport
Rain sensor (auto-wipers)	-	■	■
Acoustic windscreen	-	■	■
Dual-zone climate control	■	■	■
Dust and pollen filter	■	■	■
Front & rear electric windows (one touch with anti-squeeze)	■	■	■
Twin halogen headlights with electric range adjustment	■	■	■
Bi-xenon headlights	-	□	■
- LED taillights	-	△	■
- AFS (Adaptive Front-lighting System)	-	△	■
- Automatic range adjustment	-	△	■
- LED daytime running lights	-	△	■
- Headlight washer system	-	△	■
Coming home headlight function	-	■	■
Light sensor (auto-lights)	-	■	■
Integrated front fog lights	■	■	■
Electrically adjustable & heated door mirrors	■	■	■
Electrically folding door mirrors	■	■	■
Auto dimming rear view mirror	-	■	■
Rear parking sensors	-	■	■
Height & reach adjustable steering wheel	■	■	■
Power assisted steering	■	■	■
'Servotronic' speed sensitive power assisted steering	-	-	170PS+
Six speed gearbox	■	■	■
Cruise control	■	■	■
Sports suspension	-	-	■

<sup>1</sup> Exeo ST only

<sup>2</sup> Tech models feature the following additional Standard Equipment:

Black leather upholstery, iPod® connection (in glove compartment) - in lieu of USB port, BOSE® premium audio system and Satellite Navigation System. Otherwise, option availability is as per respective SE or Sport models.

<sup>3</sup> Exeo only



INSTRUMENTS PANEL	S	SE	Sport
Multi-function display including trip computer	■	■	■
Digital clock	■	■	■
RPM counter	■	■	■
Gearshift indicator	■	■	■

INFOTAINMENT	S	SE	Sport
FM/AM radio	■	■	■
MP3 compatible CD player	■	■	■
4 speakers	■	–	–
8 speakers	–	■	■
Integrated Bluetooth® handsfree system with voice control	■	■	■
Steering wheel mounted audio/phone controls	■	■	■
AUX-in connection	■	■	■
USB port (in glove compartment)	■	■	■
iPod® connection (in glove compartment) - in lieu of USB port	–	Tech models <sup>2</sup>	Tech models <sup>2</sup>
<b>BOSE® premium audio upgrade:</b> Includes 10 high performance speakers, digital amplifier with BOSE® digital signal processing and AudioPilot noise compensation system	–	Tech models <sup>2</sup>	Tech models <sup>2</sup>
<b>Satellite Navigation System:</b> Includes DVD based dynamic route guidance, 6.5" colour screen, 3D map display, SD card slots for MP3 playback and upgraded colour dash display	–	Tech models <sup>2</sup>	Tech models <sup>2</sup>
Integrated rear window antennae	■	■	■

WHEELS	S	SE	Sport
16" 'Morfeo' alloy wheels + 205/55 R16 91V tyres	■	–	–
17" 'Elegance' alloy wheels + 225/45 R17 91W tyres	–	■	–
18" 'Quartz' alloy wheels + 225/40 R18 92Y tyres	–	–	■
16" steel spare wheel + 205/55 R16 91V tyres	■	■	■

SAFETY & SECURITY	S	SE	Sport
Driver and front passenger airbags	■	■	■
Front passenger airbag de-activation	■	■	■
Front side airbags	■	■	■
Curtain airbags	■	■	■
Driver's seatbelt reminder	■	■	■
Front active headrests	■	■	■
Tyre pressure monitoring	–	■	■
ESP + EBA	■	■	■
ISOFIX (with Top Tether) child seat anchorage points in rear	■	■	■
Remote central locking with deadlocks	■	■	■
Electronic engine immobiliser	■	■	■
Two 3-button folding keys with remote window opening/closing functionality	■	■	■
Volumetric alarm with back-up horn and tilt sensor	■	■	■
Locking wheel bolts	■	■	■

OPTIONS	S	SE	Sport
Metallic paint	□	□	□
Custom Palette paint	□	□	□
Rear side airbags	□	□	□
<b>Convenience Pack:</b> Includes front parking sensor, air quality sensor with auto-recirc function, remote boot opening <sup>3</sup> , electric rear sunblind <sup>3</sup> and upgraded colour dash display	–	□	□
<b>Bi-xenon headlights with LED daytime running lights:</b> Includes Adaptive Front-lighting System (AFS), headlight washer system, automatic range adjustment and LED taillights	–	□	■
<b>Electric Seat Pack:</b> Includes twelve-way electric front seats and memory function for driver's seat and exterior mirrors (requires Winter Pack)	–	□	□
<b>Satellite Navigation System:</b> Includes DVD based dynamic route guidance, 6.5" colour screen, 3D map display, SD card slots for MP3 playback and upgraded colour dash display	–	□ <sup>2</sup>	□ <sup>2</sup>
iPod® connection (in glove compartment) - in lieu of USB port	–	□ <sup>2</sup>	□ <sup>2</sup>
<b>BOSE® premium audio upgrade:</b> Includes 10 high performance speakers, digital amplifier with BOSE® digital signal processing and AudioPilot noise compensation system	–	□ <sup>2</sup>	□ <sup>2</sup>
<b>Black Leather Upholstery Pack</b> (always with comfort seats)	–	□ <sup>2</sup>	□ <sup>2</sup>
<b>Cream Leather Upholstery Pack</b>	–	□	–
Tan/Black Leather Upholstery Pack (always with comfort seats)	–	□	□
Silver Alcantara/Black Leather Upholstery Pack (always with comfort seats)	–	□	□
'Torrone' beige cloth interior	–	□	–
'Wenge' door & dashboard decorative wood inserts	–	□	–
<b>Winter Pack:</b> Includes heated front seats <sup>3</sup> , headlight washer system and heated front washer nozzles	□	□	□
Electric glass sunroof (slide & tilt)	–	□	□
Solar sunroof (slide & tilt)	–	□	□
Towbar (detachable)	–	□	□
Double-glazed side windows	–	□	–
Heat reflective windscreen	–	□	□
<b>Storage Pack:</b> Includes boxes under front seats <sup>3</sup> , (standard on all Exeo ST models) multi-purpose cargo net, load-through facility with skibag, 12V supply in boot <sup>3</sup> (with 230V AC inverter)	□	□	□

# TECHNICAL SPECIFICATIONS

2.0 TSI 211PS  
(Sport)  
Exeo // Exeo ST

## PETROL ENGINES

Type (cylinders / valves per cylinder)	4 // 4
Displacement (cc)	1984
Bore and stroke (mm)	82.5 x 92.8
Compression ratio	9.6
Maximum power (PS / kW / rpm) <sup>1</sup>	211 // 155 // 4600-6000
Maximum torque (Nm / lb.ft / rpm)	320 // 236 // 1500-4600
Fuel supply system	Turbocharged direct injection
Fuel type	Unleaded petrol
Emission control	EU5

## PERFORMANCE

Maximum speed <sup>2</sup> (mph)	152 // 148
Acceleration 0-62mph (s)	7.1 // 7.3

## FUEL CONSUMPTION<sup>3</sup>

Urban mpg (l / 100km)	29.4 (9.6) // 29.1 (9.7)
Extra-urban mpg (l / 100km)	53.3 (5.3) // 52.3 (5.4)
Combined mpg (l / 100km)	40.9 (6.9) // 40.4 (7.0)

## CO<sub>2</sub> EMISSIONS

Combined (g/km)	159 // 162
-----------------	------------

## TRANSMISSION

Gearbox type	6 speed manual
Ratios	I 3.667
	II 2.053
	III 1.370
	IV 1.032
	V 0.800
	VI 0.658
	R 3.400
Group ratio	3.300
Speed 1000 rpm in V/VI (km/h)	27.1 // 32.9

## CHASSIS

Front suspension	Front multi-link (4) suspension
Rear suspension	Rear trapezoidal multi-link suspension
Steering system	Hydraulic assisted
Turning circle diameter [wall to wall] (m)	11.2
Brake system	Dual hydraulic circuit (diagonal) with servo assistance
Type front and rear brakes	Ventilated discs / discs
Front brakes (mm)	320 x 30
Rear brakes (mm)	288 x 12

## WHEELS

Rims / Tyres	See equipment availability pages
--------------	----------------------------------

## DIMENSIONS

Length/width/height (mm)	4661/1772/1430 // 4666/1772/1454
Wheelbase (mm)	2642
Track front/rear (mm)	1522 // 1523
Boot capacity (l)	460 // 442 (564 up to roof on Exeo ST)
Fuel tank capacity (l)	70

## WEIGHTS

Kerb weight [with driver] (kg)	1505 // 1565
Permissible gross weight (kg)	1990 // 2050
Maximum weight without brake (kg)	750
Maximum weight with brake 8% (kg)	1700
Maximum weight with brake 12% (kg)	1500

	2.0 TDI CR 120PS (S / SE) Exeo // Exeo ST	2.0 TDI CR 143PS (S / SE / SE Tech / Sport / Sport Tech) Exeo // Exeo ST	2.0 TDI CR 143PS Multitronic (SE Tech / Sport Tech) Exeo // Exeo ST	2.0 TDI CR 170PS (Sport / Sport Tech) Exeo // Exeo ST
<b>DIESEL ENGINES</b>				
Type (cylinders / valves per cylinder)	4 / 4			
Displacement (cc)	1968			
Bore and stroke (mm)	81.0 x 95.5			
Compression ratio	16.5			
Maximum power (PS / kW / rpm) <sup>1</sup>	120 / 88 / 4000	143 / 105 / 4200		170 / 125 / 4200
Maximum torque (Nm / lb.ft / rpm)	290 / 214 / 1750-2500	320 / 236 / 1750-2500		350 / 258 / 1750-2500
Fuel supply system	Turbocharged direct injection Common Rail			
Fuel type	Diesel			
Emission control	EU5 + DPF			

<b>PERFORMANCE</b>				
Maximum speed <sup>2</sup> (mph)	127 // 122	134 // 130	129 // 125	142 // 139
Acceleration 0-62mph (s)	10.5 // 10.9	9.2 // 9.6	9.3 // 9.6	8.4 // 8.6

<b>FUEL CONSUMPTION<sup>3</sup></b>				
Urban mpg (l / 100km)	41.5 (6.8)* // 39.8 (7.1)*		38.7 (7.3)*	37.2 (7.6)*
Extra-urban mpg (l / 100km)	74.3 (3.8)*		61.4 (4.6)*	67.3 (4.2)*
Combined mpg (l / 100km)	58.9 (4.8)* // 56.5 (5.0)*		51.4 (5.5)*	52.3 (5.4)*

<b>CO<sub>2</sub> EMISSIONS</b>				
Combined (g/km)	129* // 132*		146*	142*

<b>TRANSMISSION</b>				
Gearbox type	6 speed manual		Multitronic (CVT) auto	6 speed manual
Ratios	I	3.667	2.400 (min)	3.667
	II	2.053		2.053
	III	1.286		1.286
	IV	0.939		0.939
	V	0.703		0.703
	VI	0.575	0.400 (max)	0.575
	R	3.400	2.400	3.400
Group ratio	3.300		5.300	3.750
Speed 1000 rpm in V/VI (km/h)	30.7 // 37.5		n/a	27.2 // 33.2

<b>CHASSIS</b>				
Front suspension	Front multi-link (4) suspension			
Rear suspension	Rear trapezoidal multi-link suspension			
Steering system	Hydraulic assisted			
Turning circle diameter [wall to wall] (m)	11.2			
Brake system	Dual hydraulic circuit (diagonal) with servo assistance			
Type front and rear brakes	Ventilated discs / discs			
Front brakes (mm)	288 X 25		312 X 25	
Rear brakes (mm)	245 X 10		255 X 12	

<b>WHEELS</b>				
Rims / Tyres	See equipment availability pages			

<b>DIMENSIONS</b>				
Length/width/height (mm)	4661/1772/1430 // 4666/1772/1454			
Wheelbase (mm)	2642			
Track front/rear (mm)	1522 // 1523			
Boot capacity (l)	460 // 442 (564 up to roof on Exeo ST)			
Fuel tank capacity (l)	70			

<b>WEIGHTS</b>				
Kerb weight [with driver] (kg)	1505 // 1565		1545 // 1605	1530 // 1590
Permissible gross weight (kg)	1990 // 2050		2030 // 2090	2015 // 2075
Maximum weight without brake (kg)	750		750	750
Maximum weight with brake 8% (kg)	1500	1800	1900	1800
Maximum weight with brake 12% (kg)	1300	1600	1700	1600

\* Provisional data.

<sup>1</sup> The maximum power output figures are quoted in PS (or Pferdestärke, which is the metric equivalent of horsepower). To convert from metric to imperial horsepower, divide the PS by 1.0139.

<sup>2</sup> Where law permits.

<sup>3</sup> Official fuel consumption according to EU Directive 99/94. The consumption calculation according to 1999/100/EC is based on the actual unladen weight of the vehicle. Additional specifications can lead to a higher weight class and hence to consumption figures of this higher weight class. The driving style, road traffic conditions, environmental influences and vehicle condition can in practice lead to consumption figures which may differ from those calculated with this standard.

# MAIN ACCESSORIES



Interior style wood effect/black leather Steering wheel.  
3R0064241B

Gearknob. Handbrake cover.  
3R0064320N / 3R0064310N



Sport pedal set.  
3R2071700



18" alloy wheels Anthracite DV180.  
3R0071498



Roof bars.  
3R0071101 (Exeo) / 3R9071101 (Exeo ST)



Luggage box (450 litre). (roof bars required with luggage box).  
000071180A



Recaro 'ISOFIX Duo Plus' child seat G1 (9 months-4 years) SEAT branded.  
(suitable for vehicles with ISOFIX mountings)  
000019221A



Door mirror covers - Chrome.  
6J0072500



Boot storage solutions.  
3R0061205 (Exeo) / 3R9061205 (Exeo ST)



# UPHOLSTERIES



EB - 'Delia' Cloth

**S**



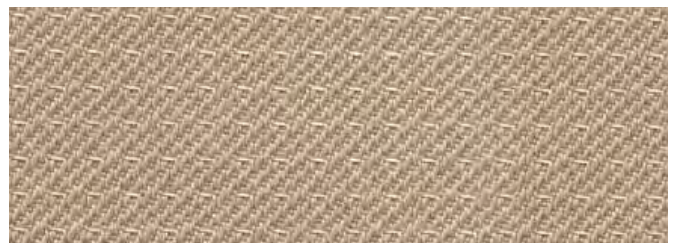
FF - 'Box' Cloth

**SE**



GA - 'Sorey' Cloth

**Sp**



DB + PL3 - 'Torrone' Beige Cloth

**SE**



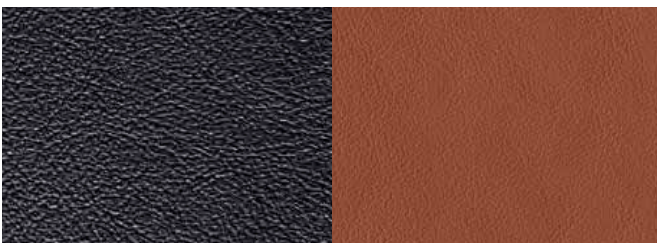
FE - Black Leather\*  
 FE + PL1 - Black Leather\*  
 GJ - Black Leather\*  
 GJ + PL1 - Black Leather\*

**SE Tech**  
**SE**  
**Sp Tech**  
**Sp**



DB + PL2 - Cream Leather\*

**SE**



FE + PL4 Tan/Black Leather \*  
 GJ + PL4 Tan/Black Leather \*

**SE**  
**Sp**



FE + PL5 Silver Alcantara/Black Leather \*  
 GJ + PL5 Silver Alcantara/Black Leather \*

**SE**  
**Sp**





KIBO Grey

S



GLOSSY Black

Sp



VULCANO Grey

SE



WENGE Wood

SE

# WHEELS



16" 'Morfeo' alloy wheel

**S**



17" 'Elegance' alloy wheel

**SE**



18" 'Quartz' alloy wheel

**Sp**

# COLOURS



White - B4B4 *Non-metallic*

**ALL MODELS**



Emoción Red - 9M9M *Non-metallic*

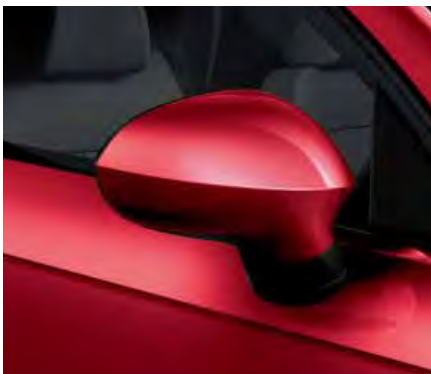
**ALL MODELS**



Nevada White - 2Y2Y2 *Metallic*

*Metallic*

**ALL MODELS**



Dakota Red - K8K8 *Metallic*

**ALL MODELS**



Ice Silver - P5P5 *Metallic*

**ALL MODELS**



Monsoon Grey - 0C0C *Metallic*

*Metallic*

**ALL MODELS**



Alba Blue\* - Z0Z0 *Metallic*

**ALL MODELS**



Ada Blue - 7N7N *Metallic*

**ALL MODELS**



Phantom Black - L8L8 *Metallic*

*Metallic*

**ALL MODELS**



Boal - 6M6M *Custom Palette*

**ALL MODELS**

\*Exeo ST only. Please note: The print processes do not allow exact reproduction of the upholstery and paint colours.





## MEMBERSHIP IS FREE. THE REWARDS ARE PRICELESS.

SEAT is the place where real fans go to share their passion for all things about SEAT. As an exclusive member, you'll be the first to know about new car launches, the latest SEAT concept cars, and you'll be eligible to win fantastic trips and prizes too. Here are just some of the benefits you'll enjoy:

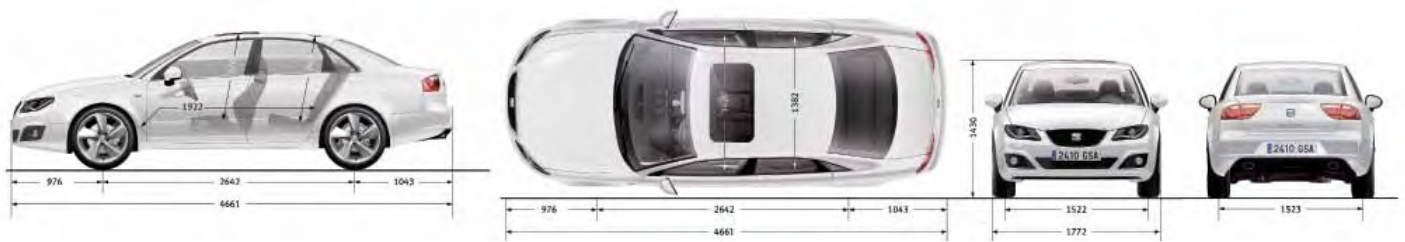
- **A chance to win tickets to world-class sporting events, like UEFA Europa League matches.**
- **The latest news and SEAT exclusives.**
- **VIP access to some of the biggest concerts.**
- **Tips and advice on how to care for your SEAT.**

Club SEAT is truly the all-in-one site for the SEAT fan. Best of all it's free to join. So sign up today at [www.club-seat.co.uk](http://www.club-seat.co.uk) and start receiving the Club SEAT newsletter – it explains all the benefits that membership will bring.

*Get involved*



# DIMENSIONS



## SEAT EXEO



## SEAT EXEO ST

# ENGINES/VERSIONS

PETROL	S	SE	SE Tech	Sp	Sp Tech
2.0 TSI 211PS	-	-	-	X	-

DIESEL	S	SE	SE Tech	Sp	Sp Tech
2.0 TDI CR 120PS	X	X	-	-	-
2.0 TDI CR 143PS	X	X	X	X	X
2.0 TDI CR 143PS Multitronic	-	-	X	-	X
2.0 TDI CR 170PS	-	-	-	X	X

# SEAT INFORMATION

## The SEAT Warranty

**Three-year Warranty.** All new SEATs registered in the UK come with a three year/60,000 miles warranty, which protects your car against the failure of most mechanical and electrical components due to manufacturing defects. This comprises a two-year manufacturer's warranty with unlimited mileage plus a further one-year/60,000 (whichever is soonest) Dealer Warranty. Should the mileage exceed 60,000 miles within the first two years, the manufacturer's two-year warranty will still be valid. If an additional warranty for subsequent years or higher mileage is desired, it may be purchased from an authorised SEAT dealer or repairer, however, this additional warranty must be purchased before the mileage reaches 60,000. Cover is subject to the car being serviced and maintained according to the manufacturer's technical guidelines. Full details of the three-year warranty are available from your SEAT dealer or repairer.

**Three-year Paint Warranty.** The paintwork of the Exeo and Exeo ST are covered against manufacturing defects for a period of three years. Naturally, the Exeo and Exeo ST must be cared for in compliance with the operating instructions which will be found in your vehicle handbook. Please consult your authorised SEAT dealer or repairer for full warranty details.

**Twelve-year Body Protection Warranty.** The internal body sections and panels of the Exeo and Exeo ST are covered against rusting through from the inside for a period of twelve years. Naturally, the Exeo and Exeo ST must be cared for in compliance with the operating instructions which will be found in your vehicle handbook. Please consult your authorised SEAT dealer or repairer for full warranty details.

**SEAT Parts Warranty.** SEAT parts and accessories supplied after new vehicle delivery are covered by our 24 months parts warranty.

**SEAT Accessories.** Every accessory is designed specifically for SEAT and is fully tested to our high quality standards. All accessories unless otherwise stated come with a two year warranty, extended to three years when purchased and fitted prior to delivery of a brand new vehicle, and what's more, they can be fitted by SEAT approved technicians.

**Specifications.** Specifications for the Exeo and Exeo ST refer to Model Year 2012. While SEAT makes every effort to make sure that specifications are accurate at time of going to press (09/11), you should always check details with your SEAT dealer as there may have been changes in view of SEAT's policy of continuous product improvement. The right is reserved to change specification and colour at any time. The information in this brochure can therefore be given as guidance only.

**SEAT Assistance (including European cover).** Any new SEAT purchased and registered in the UK from an authorised SEAT dealer, is covered free by SEAT Assistance (including European cover) for roadside repairs or recovery to an authorised repairer for a term of two years. Your member of the SEAT authorised network will ensure that all servicing and repairs are carried out in accordance with the manufacturer's instructions. Terms and conditions apply.

**SEAT Finance.** SEAT Finance specialises in providing funding solutions for SEAT drivers. Whether your SEAT is for private or business use, you can choose from a range of funding options. Here is our full range of finance products.

- Solutions – a personal contract plan
- Hire purchase      • Lease purchase
- Finance lease      • Contract hire

With all of our finance products you can choose one of our fixed-cost maintenance plans designed to help you budget accurately. No matter what finance product you choose, your local SEAT dealer will be able to provide you with a personalised quote that could meet your budget and vehicle needs. SEAT Finance is a trading name of Volkswagen Financial Services (UK) Limited. An offer of finance depends on certain conditions. Available to people over 18 in the UK only.

**Test-Drive a SEAT.** To arrange a test drive at your nearest dealer, or for any questions you may have about SEAT, visit our website at [seat.co.uk](http://seat.co.uk) or call us on FREEPHONE 0500 22 22 22.

## Fuel Consumption Information.

The Government fuel figures do not express or imply any guarantee of the fuel consumption of any particular vehicle. The individual vehicles have not been tested and there are inevitable differences between individual examples of the same model. In addition, a vehicle may incorporate particular modifications. Furthermore, the driving style and road and traffic conditions, as well as the extent to which the vehicle has been driven and the standard of maintenance, will affect its fuel consumption.

## Vehicle Excise Duty and CO<sub>2</sub> Emissions.

All vehicles first registered on or after 1<sup>st</sup> March 2001 are subject to a form of Vehicle Excise Duty (Road Fund Licence) based on the type of fuel the vehicle uses and its carbon dioxide (CO<sub>2</sub>) emission level, measured in grammes per kilometre (g/km).

**Optional Equipment.** Throughout this publication, wherever a feature is described as being an 'Option' or 'Optional Fitment/Pack' etc, you should assume that it will be at extra cost to the base vehicle, unless specifically stated to the contrary. Any vehicle ordered with optional equipment (other than metallic paint) will be subject to a 12 week minimum delivery period.

**SEAT Business Sales.** SEAT Business Sales is committed to meeting all your fleet requirements and driver needs. For Fleet & Small Businesses please call our Fleet Business Centre directly to speak to our business advisors on 0800 096 2328 or email us at [businesscentre@seatfleet.co.uk](mailto:businesscentre@seatfleet.co.uk). For Fleet & Small Businesses please call our Fleet Business Centre directly to speak to our business advisors on 0800 096 2328 or email us at [businesscentre@seatfleet.co.uk](mailto:businesscentre@seatfleet.co.uk). For more information on SEAT Business Sales and the Business Sales Centre network, please visit the Business Sales area at [seat.co.uk](http://seat.co.uk).





For SEAT owners & enthusiasts - all the latest SEAT news, exclusive offers & great events...

Get involved at [www.club-seat.co.uk](http://www.club-seat.co.uk)



SEAT is committed to a policy of continuous product development and reserves the right to make changes to specifications, colours and prices without notice. The information in this brochure can therefore be given as guidance only. While SEAT makes every effort to ensure that specifications are accurate at the time of publication (**September '11**), you should always check with your authorised SEAT dealership for the latest information. Due to limitations of the printing process the colours reproduced in this brochure may vary slightly from the actual paint colour and material. These vehicles and all their parts, as well as the original spares, were designed according to the Legal Regulations governing the prevention and minimisation of Environmental Impact, through the use of recycled/recyclable materials, with measures taken to achieve suitable recycling for the conservation and improvement of environmental quality. SEAT UK has made provision for the correct disposal and recycling\* of all SEAT Vehicles when they are delivered by the customer to its national network of Environment Agency authorised treatment facilities. This service is offered at no cost to the last holder and applies to SEAT vehicles of any age which are substantially complete. The service is provided by Cartakeback.com and to find your nearest facility contact 0845 257 32 33 or browse to [www.cartakeback.com](http://www.cartakeback.com).

\*Since 2006 all vehicles returned to SEAT were certified by UK Government to be recycled to 85%. This brochure has been produced from Hello Silk paper which is Forest Stewardship Council certified.