

2007 SUBARU  
OUTBACK



# THINK

## WHAT MAKES A SUBARU, A SUBARU?

It is a heritage of innovation and spirited performance. A dedication to keeping you safe, with the control to avoid an accident and the protection to survive one. A commitment to building smart and efficient vehicles that fit your life. In creating a vehicle that's as compelling to drive off the beaten path as on the interstate, we remain focused on these ideals. Because we never stop thinking of vehicles that go beyond your expectations.



Outback 3.0R L.L.Bean® Edition Wagon shown in Brilliant Silver Metallic/Granite Gray Opal.



**L.L. BEAN® EDITION** The 3.0R L.L.Bean Edition infuses distinct style with Outback ruggedness. Inside are seats trimmed in embossed two-tone perforated leather and specially embroidered floor mats. Leather and wood grace the MOMO® brand steering wheel. It's also equipped with an in-dash 6-disc CD changer, managed by steering-wheel-mounted controls, dual-zone climate control and the convenience of a standard 5-speed automatic transmission.

**PANORAMIC MOONROOF** The wide-open sky, available at the touch of a button. Significantly larger than conventional moonroofs, this unique available moonroof lets the sunshine and fresh air in for both the front and rear passengers. Enjoy the great outdoors without leaving your car.

**HEATED SEATS** A thoughtful interior welcomes you as soon as you step inside. Shivering on cold mornings while waiting for the cabin to warm up becomes a thing of the past with the available heated seats for the driver and front passenger. The four-adjustment setting lets you choose between warm and extra toasty.

# The Subaru OUTBACK An ideal fusion of ruggedness and versatility.

Nature beckons. Respond with the capability of the Outback. The inherent stability of Subaru Symmetrical All-Wheel Drive maintains composure over virtually any surface. A heavy-duty raised suspension overcomes obstacles without compromising on-road performance. Powerful, balanced boxer engines get you there faster. All working together to deliver an extraordinary experience, while keeping you in control of the road. Outback enables you to embrace any destination as your own.

#### **2.5i BASIC AND 2.5i | Wagon**

175-horsepower engine, 60/40-split rear seatbacks, premium cloth upholstery.

#### **2.5i LIMITED | Sedan and Wagon**

Leather-trimmed upholstery, 6-disc in-dash CD changer, dual-zone climate control, tilt/sliding moonroof, automatic transmission.

#### **2.5 XT LIMITED | Wagon**

243-horsepower turbocharged engine, Subaru Intelligent Drive (SI-DRIVE), panoramic tilt/sliding moonroof, performance-design front seats.



#### **3.0R L.L.BEAN® EDITION | Sedan and Wagon**

245-horsepower 6-cylinder engine, Vehicle Dynamics Control (VDC) stability system. Specially trimmed and embossed two-tone leather, and wood and leather-wrapped steering wheel. Dual-zone climate control and tilt/sliding moonroof.



Outback 2.5 XT Limited Wagon shown in Brilliant Silver Metallic/Granite Gray Opal.

# FEEL

Suddenly, the idea of getting lost  
sounds like a perfectly logical plan.





Outback 2.5 XT Limited Wagon shown in Charcoal Gray leather with optional navigation system.



**XM® SATELLITE RADIO** Listen to rock, jazz, classical or any channel in digital-quality sound, wherever your journey may take you. Every Outback is prewired for satellite radio that lets you access over 170 channels of XM feed (with your paid subscription and additional equipment).

**AUXILIARY AUDIO JACK FOR MEDIA PLAYERS** Keep your personal playlists handy accessible with the new standard auxiliary audio jack, which will accommodate your iPod® or virtually any portable media player. Be dazzled by the multi-layered sound of the available SRS WOW™ 3D audio enhancement.

**NAVIGATION SYSTEM** The available navigation system guides the way, whether it is to that out-of-the-way diner, the secluded spot in the woods or the amusement park across the country. And you can access it all with some simple taps on the easy-to-use touch-screen.



**VERSATILITY** With the multifaceted utility of the Outback, you can leave it all behind while taking everything you need. Whether you need to transport a trunkful of ropes, cams and carabiners, a cargo area filled with packs and paddles, or just bring home enough groceries to feed an entire crew, the Outback gives you enough space and flexibility to make it all fit. And bring along a few porters for the journey.



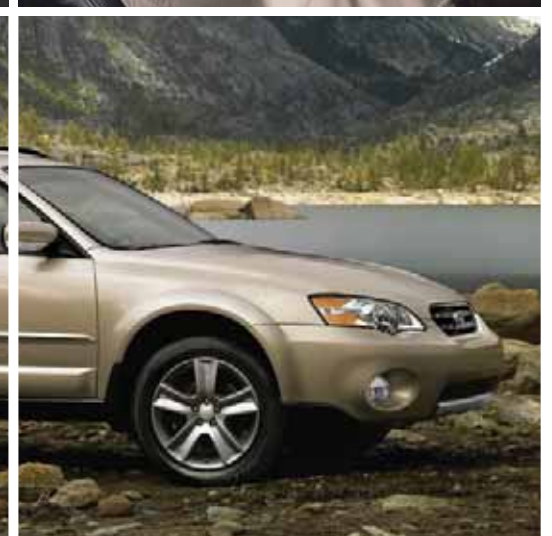
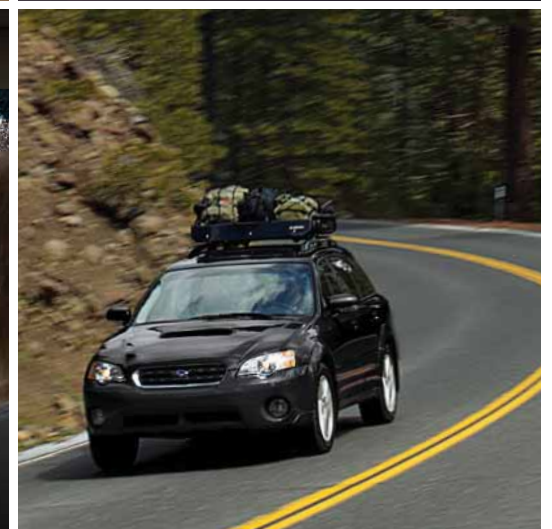
**FLEXIBLE SPACE** The Outback wagon offers up to 33.5 cu. ft. of space with both rear seats in use. With both rear seats down, you can make full use of the up to 65.4 cu. ft. of cargo capacity. You'll also find concealed storage compartments in the side panels and an under-floor storage tray to keep small items secure and organized.



**60/40-SPLIT FOLDING REAR SEATS** Offering high levels of flexibility, both the Outback wagon and sedan let you transport a myriad of differently sized objects. Put both rear seatbacks of the 60/40-split seats up to carry up to three passengers. It also allows for two passengers and a long article, or one passenger and gear for the entire team. Or fold both rear seatbacks for full access to the cargo or trunk area.



Outback 2.5 XT Limited Wagon shown in Obsidian Black Pearl.





# CONFIDENCE TO GET THERE. AND BACK.

Every Subaru was designed to achieve the highest crash test scores in its class. But to help keep you from having to test it out yourself, we've engineered the Outback to provide control and agile handling characteristics. Then we equipped it with active safety features that help you to negotiate an

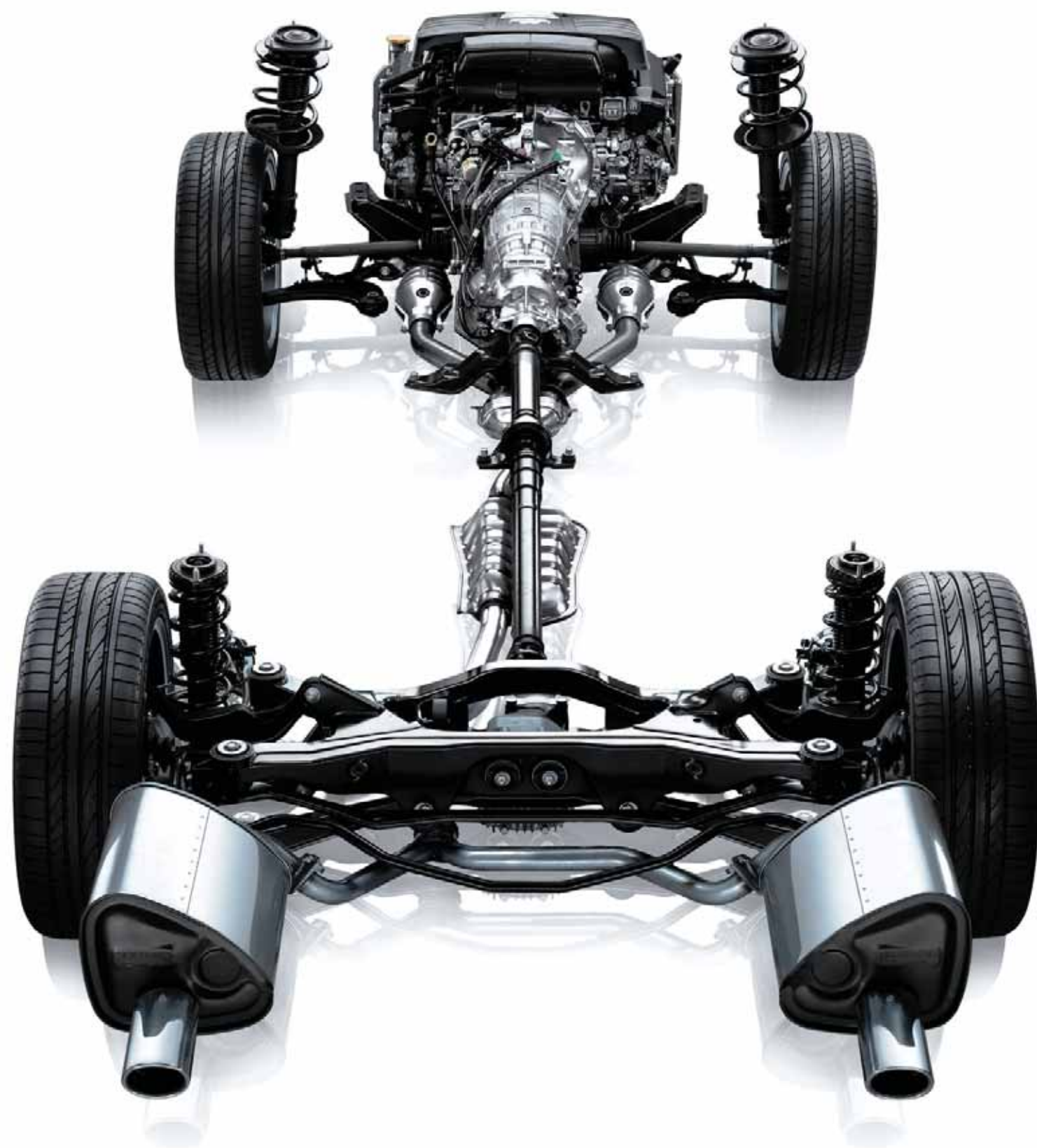
emergency situation. In the event of an impact, its numerous passive safety systems help to minimize the results of the encounter. It all combines to form a multidimensional approach to safety that results not only from selected features, but from every aspect of the vehicle.

In the Outback, roads may be optional. But safety never is. Because trademark innovations like our standard Subaru Symmetrical All-Wheel Drive and boxer engine not only give you traction and stability for active driving, but also active safety to help steer clear of an accident altogether. With advancements to protect you in an unavoidable collision, it's the kind of safety that lets you drive with confidence. **It's what makes a Subaru, a Subaru.**

★★★★★ for front and side impact collisions.<sup>1</sup>

- National Highway Traffic Safety Administration

<sup>1</sup> Government star ratings are part of the National Highway Traffic Safety Administration's (NHTSA's) New Car Assessment Program. Visit [safercar.gov](http://safercar.gov) for more information.



## Subaru Symmetrical All-Wheel Drive

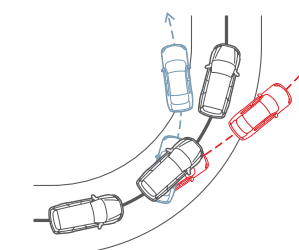
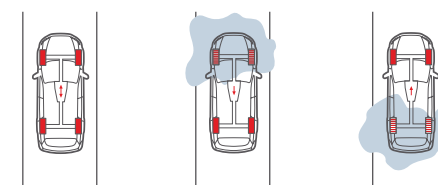
Unfamiliar roads. Unknown precipitation. Uncharted territories. A destination out of the ordinary. All possible, and perhaps even desirable. But only if you're secure that your tires are firmly adhering to the road, no matter what the path or the weather has in store. The unique Subaru Symmetrical All-Wheel Drive system delivers traction that you can depend on. Its ideal balance helps to ensure stability and poise. And its efficiency at transmitting power delivers greater grip and quick response to slippage. Providing you with better handling in slick conditions, and intensified performance in any condition. It's a system that puts you in control of the road, and possibly your well-being.

# MORE PREDICTABLE TRACTION

IT'S WHAT MAKES A SUBARU, A SUBARU.

**STABILITY** The Subaru Symmetrical All-Wheel Drive system, with its fore, aft and lateral balance, results in neutral cornering and superior handling. Unlike two-wheel-drive vehicles, which may be more prone to understeer or oversteer, the full-time AWD automatically powers all four wheels. This results in greater traction for more stable handling.

**VEHICLE DYNAMICS CONTROL** Integrated with the Variable Torque Distribution AWD, the sensors of the Vehicle Dynamics Control (VDC) stability system continually monitor driving conditions to detect and help correct unintended deviations in the vehicle path and set you back on the correct path.<sup>1</sup>



<sup>1</sup> Available only on 2.5 XT Limited and 3.0R L.L.Bean® Edition models.



**CONTROL** Subaru offers three advanced full-time all-wheel drive (AWD) systems in the Outback. With their symmetrical layout, power flows directly from the engine to the wheels for more efficient response to any slippage. Should the road surface suddenly change, the AWD system instantly redirects power from the wheels that slip and delivers it to those with greater grip, maintaining better overall control of your Outback. More stability. Enhanced safety. Maximum adhesion.



**HEAVY-DUTY RAISED SUSPENSION** Answer the call of the unpaved road. With up to 8.7 inches of ground clearance, the Outback equips you with the ability to clear obstacles and travel over rocky surfaces. Yet unlike most truck-based SUVs, on-road performance is not compromised, as the car-derived 4-wheel independent suspension, precise rack-and-pinion steering and rigid chassis all work together to deliver a smoother and more responsive ride.

**CONTINUOUS AWD** In models with the 5-speed manual transmission, power is normally split 50/50 between the front and rear wheels. Should wheel slippage occur, the viscous-center locking differential automatically helps transfer power away from the wheels experiencing slip to the wheels with the most amount of traction.

**ACTIVE AWD** Paired with the available 4-speed automatic transmission, the Active AWD system features an electronically managed continuously variable multiplate transfer clutch. This system monitors parameters such as wheel slippage and vehicle speed, actively seeking to adjust power to the front or rear wheels with the most traction.

**VTD AWD** The Variable Torque Distribution (VTD) system of the 5-speed automatic normally splits power 45% front and 55% rear to deliver a sporty feel, and electronically apportions torque for maximum grip.

## Subaru Boxer Engine It's what makes a Subaru, a Subaru.

Press the accelerator to get outstanding power, along with a healthy dose of innovation. At the heart of the Outback is our legendary SUBARU BOXER engine, with pistons laid flat in horizontal opposition. Used in every Subaru, this design

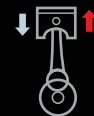
lowers the center of gravity, promoting precise handling and enhanced stability, while increasing durability and reducing vibration. It's the force that gives you greater control, and greater safety.



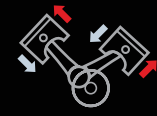
**LESS VIBRATION** The 180-degree boxer engine layout allows the pistons to move in exact horizontal opposition, effectively negating the vibrations of the opposing pistons. Its smoothness not only sweetens power delivery, it also helps increase longevity.



SUBARU BOXER ENGINE

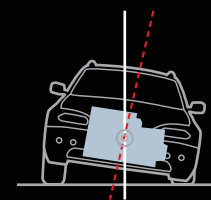
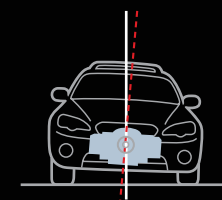


INLINE ENGINE



V-TYPE ENGINE

**GREATER STABILITY** The SUBARU BOXER engine's lightweight, compact design lowers the vehicle center of gravity. Providing more stable handling characteristics to better keep the car along its intended path, especially when changing direction quickly.





Outback 2.5 XT Limited Wagon shown in Obsidian Black Pearl.

**PERFORMANCE** Subaru has utilized the boxer design for almost 40 years. It remains the only configuration worthy of meeting our standards, and it has progressed through insight gained by decades of experience combined with the integration of the latest technology. A choice of three exceptional powerplants awaits, depending upon whether you value optimal fuel economy, appreciate the velvet-smooth surge of 6-cylinders or simply love the exhilaration of turbocharged acceleration.

**TRANSMISSIONS** The 5-speed manual transmission is fully synchronized for precise action. The smooth-shifting 4- and 5-speed automatic units feature SPORTSHIFT® manual control for greater involvement and an adaptive control that provides optimal power for climbing hills.

**2.5i** The aluminum-alloy 2.5-liter 4-cylinder engine utilizes a computer-controlled i-Active Valve Lift System that increases horsepower to 175, delivering a broader torque curve and seamless power. And it gets up to 23/28 mpg in city/highway driving.<sup>1</sup>

**2.5 XT** With a hood scoop to aid air intake to the intercooler, the turbocharger of the 2.5 XT Limited delivers 243 potent horsepower. Peak torque of 241 is reached at a low 3,600 rpm, thanks to the Active Valve Control System increasing overall breathability for more power throughout.

**3.0R** The normally aspirated 3.0-liter 6-cylinder engine delivers 245 horsepower and 215 lb-ft of torque. And sophisticated Active Valve Lift and Active Valve Control systems ensure seamless, ultrasmooth power output, no matter where you are on the tachometer.

**SI-DRIVE** Maximize engine performance and efficiency with a mere turn of the rotary. The new Subaru Intelligent Drive (SI-DRIVE) system of the 2.5 XT Limited controls performance characteristics to suit your driving needs—or desires. Put it in Intelligent mode for fuel efficiency around town and when driving in slippery conditions, such as loose gravel or icy roads. Dial it up to Sport for quick throttle feedback and linear acceleration. For full-on propulsion, the Sport Sharp mode delivers more power sooner, greater low-end thrust and maximum enjoyment.

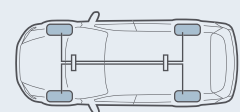


<sup>1</sup> With manual transmission

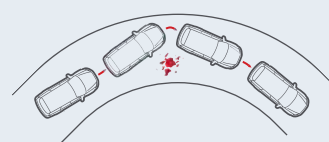
# UNCOMPROMISING SAFETY



**ACTIVE SAFETY** Our approach to keeping you safe only begins with the traction of Subaru Symmetrical AWD and responsive handling to keep you in control. These inherent advantages are supported by a comprehensive array of features to help you in an emergency. To help avoid an impending accident, ventilated 4-wheel antilock disc brakes (ABS) are enhanced with Electronic Brake-force Distribution (EBD) to maximize stopping power sooner. At Subaru, every innovation is designed with your protection in mind.

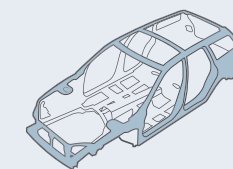


**TIRE PRESSURE MONITORING SYSTEM** Maintaining proper pressure is key in preserving optimal driving dynamics and control in handling. The tire pressure system alerts you when one or more of your tires loses air pressure so that you may correct the situation as soon as possible.<sup>1</sup>

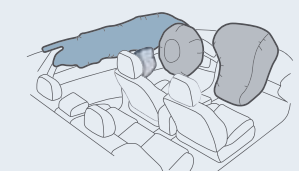


**CONTROL** Standard full-time AWD automatically adjusts power to the front and rear wheels, helping to maintain greater traction, no matter what the road surface or the weather has in store, helping you to maintain better control of your Outback.

**PASSIVE SAFETY** Subaru innovations not only help you avoid a collision. They help you and your passengers survive one, thanks to features like seat belts with front pretensioners and force limiters, side-impact beams and a Ring-Shaped Reinforcement Frame around the cabin to help dissipate the impact of a crash. Active front-seat head restraints help reduce the chances of whiplash. And an extensive array of air bags helps offer protection from the front and sides.<sup>2</sup> Together, they help the Outback achieve the highest safety scores in governmental crash testing.<sup>3</sup>



**REINFORCED CONSTRUCTION** Engineered for exceptional strength to help maintain the integrity of the cabin structure, the innovative Subaru ring-shaped reinforcements around the passenger compartment also help dissipate crash-impact energy away from occupants.

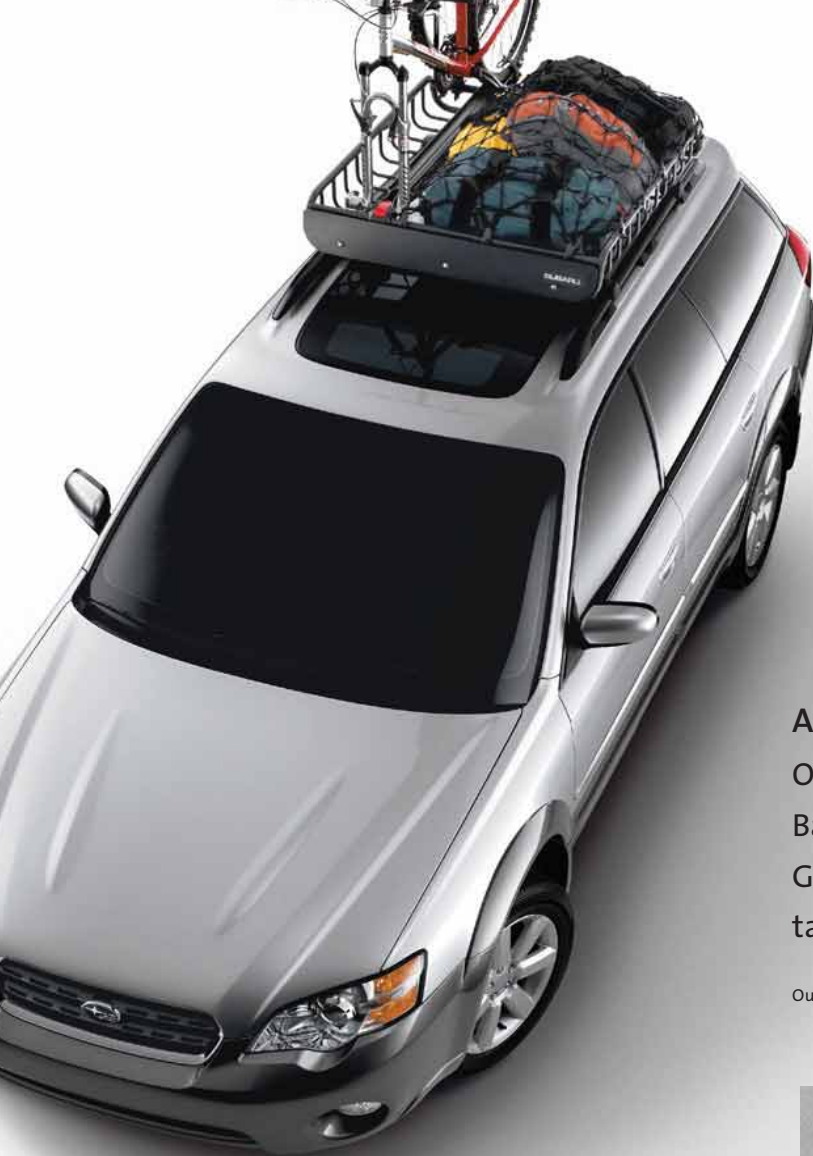


**FRONT, SIDE AND CURTAIN AIR BAGS** An intelligent front air bag system senses driver's seat position and front-passenger seat occupancy to determine the safest deployment level for each. And side-curtain air bags help protect front and outboard rear seat passengers.

<sup>1</sup> Not available on 2.5i Basic Wagon. <sup>2</sup> Always wear seat belts. Children should be properly restrained in the rear seat. <sup>3</sup> Government star ratings are part of the National Highway Traffic Safety Administration's (NHTSA's) New Car Assessment Program. Visit [Safercar.gov](http://Safercar.gov) for more information.







## Accessories

Outfit your Subaru to be as unique as your adventures. Backed by a 3-year/36,000-mile limited warranty,<sup>1</sup> Genuine Subaru Accessories give you the ability to take everything—and anything—you need.

Outback 2.5i Limited Wagon shown in Brilliant Silver/Granite Gray Opal.



**HEAVY-DUTY ROOF CARGO BASKET** Shown above with fork-mounted bike carrier and front-wheel holder (each sold separately). Accommodates up to 100 pounds of cargo capacity. Includes mounting hardware, cargo net with hooks and custom fairing.

**REAR DOME/READING LAMP** Independent on/off control sends a focused beam of light to either the driver-side or passenger-side rear-seat passenger.<sup>2</sup>

**AUTO-DIMMING MIRROR WITH COMPASS/HOMELINK®** Mirror darkens when headlights are detected from the rear of the vehicle. Includes electronic compass and three integrated HomeLink buttons.

### AVAILABLE ACCESSORIES

- XM® Satellite Radio
- Remote engine starter
- Heavy-duty Roof Cargo Basket
- Moonroof Air Deflector
- Auto-dimming Mirror with Compass
- Aero Crossbar Kit
- Roof-mounted Bike Attachment (single)
- Kayak Carrier
- Ski Attachment (6 pair)
- Hitch-mounted Bike Attachment
- Puddle Lights
- Trailer Towing Kit
- Cargo-area Compartment Cover
- Compartment Separator/Dog Guard
- Cargo-area Nets
- Severe Weather Companion
- Cargo-area Spotlight
- Security System Shock Sensor
- Subwoofer/Amplifier
- Car Cover
- All-weather Floor Mats
- Hood Protector
- Front Bumper Underguard
- Splash Guards (black)
- Rear Bumper Cover
- Wheel Locks
- Battery Warmer
- Engine Block Heater

For a complete list of available accessories, log on to [www.subaru.com](http://www.subaru.com)

<sup>1</sup> Accessories backed by 3-year/36,000-mile New Car Limited Warranty when installed at time of vehicle purchase. For complete details on warranty coverage and exclusions, see your Subaru dealer or log on to [www.subaru.com](http://www.subaru.com).

<sup>2</sup> Available only on sedans and wagons equipped with moonroof.



## Ownership Benefits

Enjoying your Subaru for years to come—that's the promise of our comprehensive warranties and roadside assistance program. It's a fact attested by the 96% of Subaru vehicles sold in the past 10 years that are still on the road today.<sup>1</sup> It's the confidence you feel when you get behind the wheel.

### NEW CAR LIMITED WARRANTY

3 years or 36,000 miles, whichever comes first.

### POWERTRAIN LIMITED WARRANTY

5 years or 60,000 miles, whichever comes first.

### WEAR ITEM LIMITED WARRANTY

3 years or 36,000 miles, whichever comes first.

### RUST PERFORATION LIMITED WARRANTY

5 years, unlimited mileage.

**THE SUBARU ROADSIDE ASSISTANCE PROGRAM** covers all 2007 Subaru vehicles during the first 3 years or 36,000 miles, whichever comes first. By calling the toll-free number in the Owner's Information Kit, Subaru owners can take advantage of any of the following benefits:

24-hour Roadside Assistance, seven days a week, 365 days a year, throughout the United States.

Emergency Towing Service to the nearest authorized Subaru dealer.

Emergency Roadside Assistance for jump starts, gasoline (up to two gallons), flat tire change, emergency lockout service (lost key or key is locked in the vehicle) and emergency fluid replacement.

**SUBARU ADDED SECURITY®** could be the most important option you choose. Protect your investment with a Subaru Added Security extended service contract—the **only** one backed by Subaru of America, Inc. Ask your salesperson for coverage details and assistance in selecting the plan that's best for you, up to 7 years or 100,000 miles.

**SUBARU.COM** begins your Subaru experience. Here, you can find extensive information, including specs, photos and reviews. Build your own Subaru, locate dealers and schedule a test drive. After your purchase, activate your free My.Subaru site, where Subaru owners can track their vehicle's service history, schedule service appointments, receive special offers exclusive to My.Subaru members and much more.

For complete warranty and program information, including coverage and exclusions, see your Subaru dealer.

<sup>1</sup> Based on R. L. Polk & Co. vehicle registration statistics for period ending 7/31/05.

## Colors

### Paint



Brilliant Silver Metallic



Champagne Gold Opal



Diamond Gray Metallic



Newport Blue Pearl



Obsidian Black Pearl



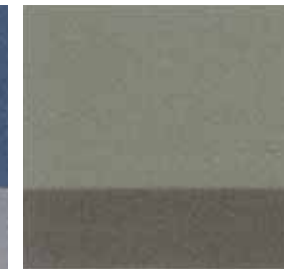
Satin White Pearl



Brilliant Silver Metallic/  
Granite Gray Opal

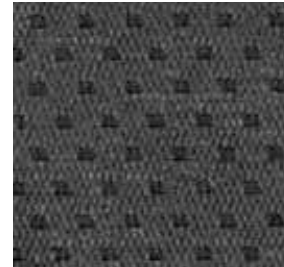


Newport Blue Pearl/  
Granite Gray Opal



Willow Green Opal/  
Moss Green Metallic

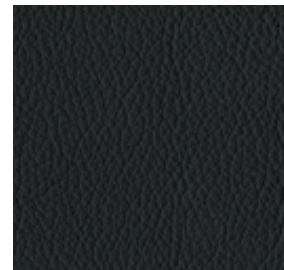
### Upholstery



Dark Charcoal Tweed



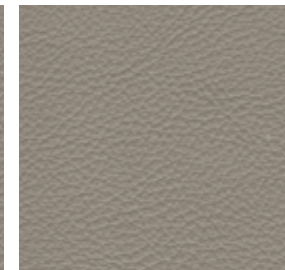
Warm Ivory Tweed



Charcoal Leather



Dark Taupe/Taupe Leather



Taupe Leather

## OUTBACK

### Color Combinations

PAINT	UPHOLSTERY	2.5i BASIC WAGON		2.5i WAGON		2.5i LIMITED SEDAN		2.5i LIMITED WAGON		2.5 XT LIMITED WAGON		3.0R L.L.BEAN® EDITION SEDAN	3.0R L.L.BEAN EDITION WAGON
		Dark Charcoal Tweed	Warm Ivory Tweed	Dark Charcoal Tweed	Warm Ivory Tweed	Charcoal Leather	Taupe Leather	Charcoal Leather	Taupe Leather	Charcoal Leather	Taupe Leather	Dark Taupe/Taupe Leather	Dark Taupe/Taupe Leather
Brilliant Silver Metallic		-	-	-	-	●	-	-	-	-	-	●	-
Champagne Gold Opal		-	●	-	●	-	●	-	●	-	●	●	●
Diamond Gray Metallic		-	-	-	-	-	-	●	-	●	-	-	-
Newport Blue Pearl		-	-	-	●	-	●	-	●	-	●	●	-
Obsidian Black Pearl		●	-	●	-	●	-	●	-	●	-	●	●
Satin White Pearl		-	-	-	●	-	●	-	●	-	●	●	●
Brilliant Silver Metallic/Granite Gray Opal		●	-	●	-	-	-	●	-	●	-	-	●
Newport Blue Pearl/Granite Gray Opal		-	-	-	-	-	-	-	-	-	-	-	●
Willow Green Opal/Moss Green Metallic		-	-	-	●	-	-	-	-	-	-	-	●

● Available - Not available

## Outback Specifications

ENGINE AND DRIVETRAIN	2.5i BASIC WAGON	2.5i WAGON	2.5i LIMITED SEDAN AND WAGON	2.5 XT LIMITED WAGON	3.0R L.L.BEAN® EDITION SEDAN AND WAGON
	Engine	2.5-liter SOHC aluminum-alloy 16-valve horizontally opposed 4-cylinder SUBARU BOXER engine with i-Active Valve Lift System. Platinum-tipped spark plugs.			2.5-liter DOHC intercooled, turbocharged aluminum-alloy 16-valve 4-cylinder horizontally opposed SUBARU BOXER engine with Active Valve Control System. Iridium spark plugs.
Power <sup>1</sup>	175 hp @ 6,000 rpm			243 hp @ 6,000 rpm	245 hp @ 6,600 rpm
Torque <sup>1</sup>	169 lb-ft @ 4,400 rpm			241 lb-ft @ 3,600 rpm	215 lb-ft @ 4,200 rpm
Compression ratio	10.0:1			8.2:1	10.7:1
Bore and stroke	99.5 x 79.0 mm			99.5 x 79.0 mm	89.2 x 80.0 mm
Intake system	Aluminum-alloy intake manifold			Composite-resin intake manifold. Turbocharger with air-to-air intercooler. Maximum boost pressure: 13.5 psi.	Composite-resin intake manifold
Fuel and ignition system	Sequential multiport fuel injection. Electronic Throttle Control (ETC). Engine management with integrated self-diagnostics and adaptive driving habits capability. Distributorless electronic ignition – 2.5i models. Direct ignition – 2.5 XT and 3.0R models.				
SI-DRIVE performance management system	Available only on 2.5 XT Limited Wagon, Subaru Intelligent Drive (SI-DRIVE) enables three distinctively different modes of vehicle performance characteristics by regulating the engine control unit (ECU), the automatic transmission control unit (if equipped), and by fine-tuning the electronically controlled throttle.				
Manual transmission	Standard fully synchronized 5-speed manual <b>2.5i LIMITED:</b> Not available			Standard fully synchronized reinforced 5-speed manual	Not available
Automatic transmission	<b>2.5i AND 2.5i BASIC:</b> Optional 4-speed adaptive electronic direct-control automatic with SPORTSHIFT® manual control			Optional 5-speed adaptive electronic direct-control automatic with SPORTSHIFT manual control	Standard 5-speed adaptive electronic direct-control automatic with SPORTSHIFT manual control
Emissions	Certified Low Emission Vehicle (LEV2 LDT2) <sup>2</sup>			Certified Low Emission Vehicle (LEV2 LDT2)	Certified Low Emission Vehicle (LEV2 LDT2)
<b>FUEL</b>					
Fuel economy (city/highway)	Manual: 23/28 mpg Automatic: 22/28 mpg			Manual: 21/27 mpg Automatic: 20/26 mpg	Manual: N/A Automatic: 19/26 mpg
Fuel requirement	Unleaded gasoline (87 octane)			Premium unleaded gasoline (91 octane) required	Premium unleaded gasoline (91 octane) recommended <sup>3</sup>

### SUBARU SYMMETRICAL ALL-WHEEL DRIVE

Continuous All-Wheel Drive	Models equipped with 5-speed manual transmission, utilize a viscous-type locking center differential and limited-slip rear differential <sup>4</sup> with torque distribution normally configured at a 50/50-split front-to-rear. If wheel speed differs between front and rear axles, the system helps distribute power to the wheels with the most traction.
Active All-Wheel Drive	Models equipped with 4-speed automatic transmission utilize an electronically controlled variable transfer clutch and limited-slip rear differential <sup>4</sup> to distribute power to where traction is needed. Sensors monitor parameters such as wheel slippage, throttle position and braking to help determine torque distribution and direct it to the wheels with optimum traction.
Variable Torque Distribution (VTD) All-Wheel Drive	Models equipped with 5-speed automatic transmission utilize an electronically controlled variable transfer clutch in conjunction with a planetary-type center differential, and a viscous-type limited-slip rear differential. Torque distribution is normally configured at a performance-oriented rear-wheel-biased 45/55 split front-to-rear. Sensors monitor parameters such as wheel slippage, throttle position and braking to help determine torque distribution and direct it to the wheels with optimum traction.

### STABILITY AND TRACTION

Vehicle Dynamics Control (VDC)	The 2.5 XT Limited and 3.0R L.L.Bean Edition models standard VDC stability control utilizes sensors which constantly monitor wheel speed, steering angle, brake pressure, vehicle yaw rate and lateral g-forces. If VDC detects a difference between the driver's intended path and the one the vehicle is actually taking, VDC applies braking power and/or reduces engine torque to help correct vehicle path.
Traction Control System (TCS)	VDC also incorporates an all-wheel, all-speed traction control system which senses a loss of traction and applies braking force to the slipping wheel or wheels as necessary to maintain vehicle motion

### CHASSIS

Steering	Engine-speed-sensing power-assisted rack-and-pinion. Steering ratio: 16.5:1. Turns lock-to-lock: 3.2. Turning circle: 35.4 ft.
Suspension	4-wheel independent heavy-duty raised suspension. Front: Strut-type with lower L-arm. Antidive geometry. Rear: Multilink with antilift and antisquat geometry. Front and rear stabilizer bars.
Brakes	4-wheel disc, ventilated front. 4-channel, 4-sensor ABS with Electronic Brake-force Distribution (EBD).
Brake discs	Front: 11.5 in./Rear: 10.6 in.

### WHEELS AND TIRES

Wheels	16 x 6.5-inch 5-spoke styled steel	17 x 7.0-inch 7-spoke aluminum-alloy. Silver finish	17 x 7.0-inch 5-spoke aluminum-alloy. Silver finish	17 x 7.0-inch 5-spoke aluminum-alloy. Gray finish
Tires	225/60 R16 97H M+S all-season   225/55 R17 95V M+S all-season			

### EXTERIOR DIMENSIONS

	WAGONS					SEDAN		
	Length/Width/Height	188.7 in./69.7 in./63.2 in. (61.6 in. without crossbars)				186.2 in./69.7 in./59.1 in.		
Wheelbase	105.1 in.					105.1 in.		
Track (front/rear)	58.9 in./58.7 in.					58.9 in./58.7 in.		
Base curb weight (manual/automatic)	2.5i BASIC 3,330 lbs./3,375 lbs.	2.5i 3,330 lbs./3,375 lbs.	2.5i LIMITED N/A /3,430 lbs.	2.5 XT LIMITED 3,535 lbs./3,605 lbs.	3.0R L.L.BEAN EDITION N/A /3,610 lbs.	2.5i LIMITED N/A /3,370 lbs.	3.0R L.L.BEAN EDITION N/A /3,570 lbs.	
Coefficient of drag (cd)	0.32					0.34		
Ground clearance (at base curb weight)	8.4 in.	8.4 in.	8.4 in.	8.7 in.	8.4 in.	8.4 in.		
Angle of approach/breakover/departure	18.7°/19.7°/22.0°	18.7°/19.7°/22.0°	18.7°/19.7°/22.0°	18.3°/19.7°/22.0°	18.3°/19.7°/22.0°	18.3°/19.7°/20.0°	18.3°/19.7°/20.0°	
Towing capacity (Class I)	2,700 lbs.	2,700 lbs.	2,700 lbs.	2,700 lbs.	3,000 lbs.	2,700 lbs.	3,000 lbs.	
<b>INTERIOR DIMENSIONS</b>								
Headroom (front/rear)	40.5 in./39.1 in. (with moonroof: 38.7 in./37.1 in.)					37.6 in./36.5 in.		
Legroom (front/rear)	44.1 in./33.9 in.					44.1 in./33.9 in.		
Shoulder room (front/rear)	54.4 in./53.7 in.					54.2 in./53.7 in.		
Passenger volume	97.7 cu. ft. (with moonroof: 92.6 cu. ft.)					90.9 cu. ft.		
Cargo volume	33.5 cu. ft./65.4 cu. ft. with rear seat lowered					11.4 cu. ft.		

## Outback Specifications

	2.5i BASIC WAGON	2.5i WAGON	2.5i LIMITED SEDAN AND WAGON	2.5 XT LIMITED WAGON	3.0R LL.BEAN® EDITION SEDAN AND WAGON
<b>EXTERIOR</b>					
Projector-beam low-beam and multireflector high-beam headlights and fog lights	●	●	●	●	●
Aluminum-alloy hood with raised strakes	●	●	●	–	●
Aluminum-alloy hood with functional scoop (feeds turbocharger intercooler)	–	–	–	●	–
Front bumper with lower air intake and integrated front spoiler	●	●	●	●	–
Front bumper with lower air intake, integrated front spoiler and underguard	–	–	–	–	●
Black door handles and side mirrors	●	●	–	–	–
Body-color door handles and side mirrors	–	–	●	●	●
Body-color side mirrors with integrated turn signals	–	–	–	●	●
Heated side mirrors and windshield wipers de-icer	–	●	●	●	●
Two-speed windshield wipers with variable intermittent mode.	●	●	●	●	●
Single-speed rear window wiper with fixed intermittent mode and de-icer (wagon)	●	●	●	●	●
Lower-body cladding	●	●	●	●	●
Splash guards (black or body color, depending on exterior color)	–	●	●	●	● <sup>5</sup>
Aluminum-alloy rear gate with integrated spoiler (wagon)	●	●	●	●	●
Black-finish raised roof rails (wagon)	●	●	●	●	●
Crossbars with 100 lbs. capacity (wagon)	–	●	●	●	●
Power tilt/sliding-glass moonroof (sedan)	–	–	●	–	●
Panoramic tilt/sliding dual-panel moonroof (wagon)	–	–	●	●	●

### SEATING AND TRIM

6-way manually adjustable driver's seat. 4-way manually adjustable front-passenger seat.	●	–	–	–	–
8-way power driver's seat with manually adjustable lumbar support. 4-way manually adjustable front-passenger seat.	–	●	●	–	–
8-way power driver's seat and 4-way power front-passenger seat, both with manually adjustable lumbar support	–	–	–	●	●
4-stage heated front seats	–	●	●	●	●
Performance-design front seats	–	–	–	●	–
Rear-center armrest	–	–	● <sup>6</sup>	●	●
60/40-split flat-folding rear seatback	●	●	●	●	●
3-spoke steering wheel with manually adjustable tilt column	●	●	–	–	–
Leather-wrapped 3-spoke steering wheel with manually adjustable tilt column	–	–	●	●	–
Leather-wrapped 3-spoke MOMO® brand steering wheel with automatic transmission SPORTSHIFT® manual control buttons and manually adjustable tilt column	–	–	–	○ <sup>7</sup>	–
Wood and leather-wrapped 3-spoke MOMO brand steering wheel with manually adjustable tilt column	–	–	–	–	●
Leather-wrapped manual transmission shifter handle	–	–	–	●	–
Leather-wrapped automatic transmission shifter handle with Chestnut woodgrain-patterned inlay <sup>8</sup>	–	–	●	○	–
Leather-wrapped automatic transmission shifter handle with Elm woodgrain-patterned inlay <sup>9</sup>	–	–	●	○	●
Cloth upholstery	●	●	–	–	–
Leather-trimmed upholstery	–	–	●	●	–
L.L.Bean-embossed two-tone leather-trimmed upholstery	–	–	–	–	●
Titanium-metallic trim on doors and console	●	●	–	–	–
Titanium-metallic trim with Chestnut woodgrain-patterned accents <sup>8</sup>	–	–	●	●	–
Titanium-metallic trim with Elm woodgrain-patterned accents <sup>9</sup>	–	–	●	●	●
Carpeted floor mats	●	●	●	●	●

### CONVENIENCE FEATURES

Power front and rear windows with driver's auto-down	●	●	●	●	●
Electronically controlled cruise control	●	●	●	●	●
Dual cup holders in center console with retractable lid. Retractable dual rear cup holders.	●	●	●	●	●
Sun visors with extenders and illuminated vanity mirrors. Dual overhead map lights.	●	●	●	●	●
Overhead console with sunglasses storage	●	●	–	–	–
Auto-dimming rearview mirror with compass	–	–	–	–	●
Illuminated glove box	●	●	●	●	●
In-dash storage compartment	●	●	●	● <sup>10</sup>	● <sup>10</sup>
Center console with armrest, 12-volt power outlet and enclosed storage compartment	●	●	●	●	●
12-volt power outlet in wagons' cargo area	–	●	●	●	●
Trunk/cargo-area-concealed under-floor storage tray. Dual grocery bag hooks. Concealed storage compartments and 4 tiedown hooks in wagons' cargo-area side panels.	●	●	●	●	●
Retractable/removable cargo-area cover. Removable cargo-area tray.	–	●	● <sup>5</sup>	●	● <sup>5</sup>
Remote starter prewiring <sup>11</sup> (automatic transmission only)	●	●	●	●	●

### AUDIO AND COMMUNICATION SYSTEMS

100-watt 6-speaker audio system with single-disc in-dash CD player and MP3/WMA capability	●	●	–	–	–
100-watt 6-speaker audio system with 6-disc in-dash CD changer, MP3/WMA capability and SRS WOW™ 3D audio enhancement	–	–	●	●	●
Steering-wheel-mounted audio controls	–	–	–	–	●
Auxiliary audio jack for portable media players. XM® Satellite Radio capability. <sup>12</sup>	●	●	●	●	●
Touch-screen GPS navigation system	–	–	–	○ <sup>12</sup>	○

### INSTRUMENTATION

Analog speedometer, tachometer, coolant temperature and fuel gauges	●	●	●	●	●
Sport-design electroluminescent lighting	–	–	–	●	–
Gauge needles full-sweep on start-up	●	●	●	●	●
Digital odometer and automatic transmission (when equipped) shift-position indicator	●	●	●	●	●
Digital trip computer displaying fuel economy, driving range, digital clock, journey time, ambient temperature and road surface freeze warning	●	●	●	–	●
Digital trip computer displaying fuel economy, driving range, digital clock, journey time, ambient temperature, road surface freeze warning, and selected SI-DRIVE system mode (Intelligent, Sport or Sport Sharp)	–	–	–	●	–
Multifunction screen displaying navigation system information, trip computer functions, maintenance intervals, controls for various vehicle settings, calendar, calculator and memo-taking function	–	–	–	○ <sup>12</sup>	○

### CLIMATE CONTROL

Manually adjustable CFC-free air conditioning system with rotary controls for temperature, 4-speed fan and airflow direction	●	●	–	–	–
Dual-zone automatic digital climate control system with controls for temperature, 6-speed fan, airflow direction, automatic mode and CFC-free air conditioning	–	–	●	●	●

### SECURITY

Keyless entry system with trunk release (sedan) or cargo-area unlock (wagon) and answer-back electronic chirp	●	●	●	●	●
Antitheft security system with engine immobilizer and answer-back electronic chirp	●	●	●	●	●

### SAFETY

<b>ACTIVE</b>					
Subaru Symmetrical All-Wheel Drive	●	●	●	●	●
SUBARU BOXER engine	●	●	●	●	●
4-wheel independent heavy-duty raised suspension	●	●	●	●	●
Vehicle Dynamics Control (VDC)	–	–	–	●	●
Traction Control System (TCS)	–	–	–	●	●
Daytime Running Lights (DRL)	●	●	●	●	●
Tire Pressure Monitoring System (TPMS)	–	●	●	●	●

### PASSIVE

Dual-stage deployment driver and front-passenger front air bags (SRS) <sup>13</sup>	●	●	●	●	●
Subaru advanced frontal air bag system with driver's seat position sensor and front-passenger seat occupant detection sensor (SRS) <sup>13</sup>	●	●	●	●	●
Side-curtain air bags protecting front and rear outboard occupants (SRS) <sup>13</sup>	●	●	●	●	●
Seat-mounted front side-impact air bags (SRS) <sup>13</sup>	●	●	●	●	●
Height-adjustable active front-seat head restraints	●	●	●	●	●
Three individual height-adjustable rear head restraints (height-adjustable outboard rear head restraints on sedan)	●	●	●	●	●
Height-adjustable 3-point front seat belts with pretensioners and force limiters. 3-point rear seat belts at all seating positions.	●	●	●	●	●
Rear child-safety door locks	●	●	●	●	●
LATCH system: Lower Anchors and Tethers for Children	●	●	●	●	●
Safety brake pedal system	●	●	●	●	●
Energy-absorbing collapsible steering column	●	●	●	●	●
Ring-Shaped Reinforcement Frame body structure	●	●	●	●	●

### OPTIONAL EQUIPMENT

Touch-screen GPS navigation system	–	–	–	○ <sup>12</sup>	○
4-speed adaptive electronic direct-control automatic transmission with SPORTSHIFT manual control	○	○	●	–	–
5-speed adaptive electronic direct-control automatic transmission with SPORTSHIFT manual control	–	–	–	○	●

● Standard ○ Optional – Not available

<sup>1</sup> Subaru has applied the new SAE method for measuring horsepower and torque. <sup>2</sup> Some 2007 Outback models with the naturally aspirated 2.5-liter engine distributed for sale in California (and in Maine, Massachusetts, New York and Vermont, which have adopted California Specification Emission Control Systems and Warranties and are registered for use in those states) will be specially equipped to meet the California-certified Partial Zero Emission Vehicle (PZEV) credited Super-Ultra Low Emission Vehicle (SULEV2) requirements. The manufacturer's PZEV emission control system warranty coverage is for 15 years or 150,000 miles, whichever comes first. For complete warranty information, including coverage and exclusions, see your Subaru dealer. <sup>3</sup> Regular unleaded gasoline with an octane rating of 87 AKI or greater may be used. Using regular unleaded gasoline could result in reduced engine performance. See Owner's Manual for more detailed information. <sup>4</sup> Limited-slip rear differential not available on 2.5i Basic Wagon. <sup>5</sup> Not available on sedan. <sup>6</sup> Not available on wagon. <sup>7</sup> Included with optional automatic transmission. <sup>8</sup> With Charcoal leather upholstery. See color combinations chart. <sup>9</sup> With Taupe leather upholstery. See color combinations chart. <sup>10</sup> Optional navigation system replaces in-dash storage compartment. <sup>11</sup> Available as an accessory. See your dealer. Satellite radio hardware and required monthly subscription sold separately. <sup>12</sup> Available only with optional automatic transmission. <sup>13</sup> The Supplemental Restraint System (SRS) (air bags) affords the driver and the front and rear outboard passengers additional protection in moderate to severe frontal and side-impact collisions. This system provides supplemental protection only, and seatbelts must be worn in order to avoid injuries to out-of-position occupants upon bag deployment and to provide the best combined protection in a serious accident. Children should always be properly restrained in the rear seat.

Some images shown are for illustration purposes only. Specifications in this brochure are based on the latest product information available at the time of publication. For the most up-to-date product information, log on to [www.subaru.com](http://www.subaru.com). Some equipment shown in photography in this brochure is optional at extra cost. Specific options may be available only in combination with other options. Specific combinations of equipment or features may vary from time to time and by geographic area. Certain accessories and equipment may not be available at the time of publication. Subaru of America, Inc., reserves the right to change or discontinue at any time, without notice, prices, colors, materials, equipment, accessories, specifications, models and packages without incurring any obligation to make the same or similar changes on vehicles previously sold. Colors shown may vary due to reproduction and printing processes. This brochure was prepared by Subaru of America, Inc., is available only on cars sold to the first retail purchaser through an authorized Subaru dealer in the continental U.S. or Alaska. Subaru, SUBARU BOXER, Outback, L.L.Bean and MOMO are registered trademarks. Think. Feel. Drive. is a trademark. SRS WOW is a trademark of SRS Labs, Inc. XM is a registered trademark of XM Satellite Radio Inc. iPod is a registered trademark of Apple Computer, Inc. SPORTSHIFT is a registered trademark of Prodrive Ltd. HomeLink is a registered trademark of Prince Corporation, a wholly owned subsidiary of Johnson Controls. For more information, contact your Subaru dealer or log on to [www.subaru.com](http://www.subaru.com).



Redefining adventure in three dimensions. | **Think. Feel. Drive.**