



2012 MURANO





## INNOVATION WITH STYLE.

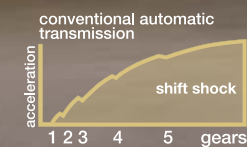
Premium is your next destination in Murano.<sup>®</sup> From its refined interior to its sleek exterior, every detail has you in mind. Starting with your arrival – seats adjust and the steering wheel tilts as you slip in. Clever technology keeps you one step ahead, while being right at your fingertips. All-Wheel Drive seems to know your next move, no matter the conditions. Getting there has never looked more appealing. Innovation with style. Innovation for all.



Nissan Murano LE shown in Carbon Silver.



IT'S EXTRAORDINARY,  
FEELING SO FREE.



*Innovation that goes with the flow.* Murano's Continuously Variable Transmission (CVT) is a game-changer. Virtually gearless, its single flexible belt eliminates gear hunting and keeps you in the engine's sweet spot, whether you're looking for efficient cruising or a quick rush of seamless acceleration.





SOMETIMES THERE ARE NO WORDS...



ONLY DETAILS.



Nissan Murano LE shown in Café Latte with Platinum Edition Package. U.S. instrumentation shown.

U.S. instrumentation shown.





# WE LOOK AT THINGS DIFFERENTLY.

Now you can, too. Welcome to your upgrade. Where the mood is upscale, and each new detail adds to the ambience, for everyone on board. Enjoy the view from an available Dual Panel Moonroof that extends to the second row, accent lighting for a warm glow, contrasting wood and metal trims, and the craftsmanship of double-stitched leather seating. On the next few pages, you'll discover all the ways that Murano takes your driving experience to a place that's both purposeful and personal.

Nissan Murano LE shown in Café Latte Leather with Platinum Edition Package.





Nissan Murano SL shown in Charcoal Leather. U.S. model shown.

## STAY CONNECTED.

Murano's available Nissan Navigation System shows you more than "just maps" with traffic alerts and on-screen lane guidance. And, of course, seamless iPod® connectivity plays your faves all the way there.<sup>1,2</sup>

**Nissan Navigation System** – Find your way, no more guessing necessary. By voice or touch, the 178 mm (7") colour monitor plots your path and keeps you moving. Stay ahead of traffic with real-time advisories from XM NavTraffic,<sup>3</sup> while on-screen lane guidance shows you where to turn. And with over 5 million key points of interest you're sure to never miss a thing!

**A. RearView Monitor** – Wouldn't it be helpful to see what you might have missed behind you? The optional RearView Monitor helps show you, anytime you're in reverse.<sup>4</sup>

**B. Intelligent Key** – No more fumbling for keys. The Nissan Intelligent Key® stays where it is in pocket or purse, and all you have to do is tap a button to unlock the doors or hatch. Even starting the ignition is now keyless.

**C. iPod® Connectivity** – An available USB Interface System for iPod® displays song info playlist-style, and lets you control all your iPod® functions by touch-screen or steering-wheel controls.<sup>5</sup>

**D. Bluetooth®** – With the available Bluetooth® Hands-Free Phone System, even your phone book is downloadable, so hands stay where they need to be. Then take calls through Murano's speakers, which adjust music volume for each call.<sup>6</sup>



<sup>1</sup>Factory-installed option. Never program while driving. GPS mapping may not be detailed in all areas or reflect current road regulations. <sup>2</sup>Always give your full attention to driving. Avoid operating your iPod® in such a way that you can be distracted during vehicle operation. See dealer for details. iPod is a registered trademark of Apple, Inc. All rights reserved. iPod not included. <sup>3</sup>XM NavTraffic® is available in select North American markets. In Canada, at time of printing, incident data is available for 7 metropolitan areas of Canada (Vancouver, Calgary, Edmonton, Toronto, Ottawa, Montreal and Quebec City). Limited flow data is available for Toronto. Subscription sold separately after trial period. Subscriptions subject to customer agreement at xmradio.ca. Fees and programming subject to change. © 2011 Sirius XM Canada Inc. XM name and XM NavTraffic are registered trademarks

of Sirius XM Radio Inc. All other trademarks and channel names are property of their respective owners. <sup>4</sup>Parking aid/convenience feature. Cannot completely eliminate blind spots or warn of moving objects. May not detect every object. Always check surroundings before moving vehicle. Not a substitute for proper backing procedures. Always turn to check what is behind you before backing up. <sup>5</sup>Availability of specific features is dependent upon the phone's Bluetooth® support. Please refer to your phone Owner's Manual for details. The Bluetooth word mark and logos are owned by Bluetooth SIG, Inc., and any use of such marks by Nissan is under licence. <sup>6</sup>Bose is a registered trademark of The Bose Corporation.





## REWARD YOURSELF.

Your own modern interior for living – with its high-design IQ, it feels like home. No compromises on comfort or convenience here. Every detail matters, like heated seats all around and the heated steering wheel, just for you.

**Memory Driver's Seat<sup>1</sup>** – With programmable settings for you and a second driver, your favourite position is always waiting. At the press of a button, your seat moves into place, as do the mirrors and steering wheel. You could say we've been expecting you.

**Dual-zone Temperature** – The perfect temperature for both front passengers – how perfect. No more cold blasts either – front vents are placed so they work like your home A/C, and cascade over you.

**Heated Seats and Steering Wheel<sup>1</sup>** – Forget that it's freezing outside. Inside Murano, you're all warm and toasty.

**Dual Moonroof<sup>1</sup>** – Hello sunshine. Unique dual panels of glass let it shine in until you close the power shades for cover.

**A. Power Seats<sup>1</sup>** – Need room for cargo in back? Pull the lever (in cargo area) and the 60/40 split rear seats collapse for more space. Then get more room for passengers by just pushing a button (from the dash or cargo area) to power them back up.

**B. Power Liftgate<sup>1</sup>** – Power it up. From your remote, dash or hatch, generous space is now fingertip-close.

**C. Cargo Organizer** – Hello well-behaved cargo. A push-button pop-up cargo divider adds flexibility too, the divider's lid snaps into place for a separate cargo area between the rear seats and storage bins. Two removable nets create up to three storage bins, while easy-to-clean flooring means even muddy gear is welcome.



**SAFETY: With a comprehensive safety strategy that includes six standard airbags, a sense of security comes standard with every Murano.**

**Nissan Advanced Airbag System** – Nissan's system includes dual-stage supplemental front airbags that adjust their inflation rate, depending on the severity of impact and your seat belt usage. If your front passenger seat is empty, an occupant sensor deactivates that airbag. Side-impact supplemental airbags are built into the front seats so they move with you, even as you adjust your seat. And above, standard roof-mounted curtain side-impact supplemental airbags help protect all outboard passengers.<sup>2</sup>

**Active Head Restraints** – In the event of certain rear-end collisions, front-seat Active Head Restraints move up and toward your head to help reduce the chance of whiplash injuries.

**Advanced Seat Belts** – Murano's front seat belts use pre-tensioners that tighten up when the airbags deploy. But if your body puts too much force on the belt, load limiters let it give a bit.

**Snug Kids** – Nissan safety engineers have dedicated thousands of hours to evaluating hundreds of child restraints in Nissans. The result: An industry first, The Snug Kids Child Safety Seat Fit Guide. This guide lists child seats that fit the rear seats of Nissan vehicles, as well as offers invaluable tips on correct installation. Look for the latest Fit Guide at [nissan.ca/owners/en](http://nissan.ca/owners/en).



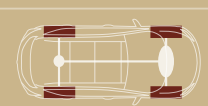
<sup>1</sup>See Specifications for availability. <sup>2</sup>Airbags are only a supplemental restraint system; always wear your seat belt. Even with the occupant-classification sensor, rear-facing child restraints should not be placed in the front-passenger's seat. Also, in addition to any other requirement of applicable law, all children 12 and under should ride in the rear seat properly secured in child restraints, booster seats, or seat belts according to their size. Airbags will only inflate in certain accidents. See your Owner's Manual for more details. Inflated airbags shown for illustration purposes only; actual coverage area may differ. Airbags deflate after deployment. Cargo and load capacity limited by weight and distribution. Always secure all cargo.





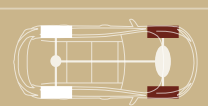
**All-Wheel Drive** Both intuitive and responsive, Murano's AWD makes perfect sense. No matter the weather conditions, or the curvy road ahead.

START WITH ALL  
**FOUR**



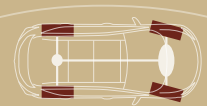
50 % 50 %

CRUISE WITH JUST  
**TWO**



0 % 100 %

CORNER WITH ALL  
**FOUR**



30 % 70 %



## TAKE OFF WITH CONFIDENCE.

Suddenly, your world feels wide open. Murano carries you on a wave of seamless, refined power, while intuitive AWD uses it intelligently.

**All-Wheel Drive** – The second you take off, standard AWD turns on, delivering power to both front and rear wheels for improved grip. Once you're up to speed, no sense powering all four wheels, so Murano efficiently sends the power all up front. Then, for enhanced cornering control and traction, AWD compensates by transferring some of that power from the front wheels to the rear.

**260 HORSEPOWER** | **240 LB-FT OF TORQUE** | **8.5 L/100 km (33 mpg)<sup>1</sup>**

**Engine** – Its 260-horsepower, 3.5-litre V6 engine keeps you ahead of the pack when you need to be. An efficient fuel consumption of 8.5 L/100 km (33 mpg) on the highway keeps it practical. That's right, go for kilometres and kilometres before needing to stop and fill up again.<sup>1</sup>

**Continuously Variable Transmission (CVT)** – Merge into smooth power. Murano's virtually "gearless" CVT knows just how to move you from gear to gear with no loss of power. So it's optimal power when you need to accelerate, then efficient cruising in between.

**SAFETY: Braking with assurance, steering with confidence. Yes and yes.**

**Vehicle Dynamic Control (VDC)** – A safety system to help keep you on your steered path, VDC senses if your vehicle starts to oversteer or understeer. To help the driver maintain control, engine power can be reduced and/or braking pressure can be applied to specific wheels.<sup>2</sup>

**Traction Control System (TCS)** – Sensing when a drive wheel is spinning, TCS responds by reducing throttle or applying brake pressure to help improve traction.

**Brake Assist/EBD** – More than "just stopping," Brake Assist senses emergency braking and automatically helps to apply maximum braking pressure if needed. Then, Electronic Brake force Distribution sends extra force to the rear brakes when it senses additional weight in the back.

**Anti-lock Braking System (ABS)** – ABS pumps Murano's brakes faster than you possibly can, to help prevent wheel lock-up in panic-braking situations.

**Brake Override Technology** – Like every Nissan since 2005, Murano comes standard with Brake Override Technology. It's designed to help slow down your vehicle and bring it to a safe stop in an emergency by overriding accelerator input and reducing engine power when the accelerator and brake pedals are applied simultaneously.

## THERE'S A MURANO FOR YOU.



### S

- Intuitive All-Wheel Drive (AWD)
- 18" Aluminum-alloy wheels, fog lights and black roof rails
- In-dash 6-CD changer with MP3 CD capability and auxiliary audio input jack
- Dual-zone Automatic Climate Control (ACC)
- Nissan Intelligent Key<sup>®</sup> with Push Button Ignition
- Power windows, power door locks and 6-way manual driver's seat with manual lumbar support
- 60/40 Split fold-down rear seatbacks with cargo area-accessible releases
- 6 Standard airbags and Vehicle Dynamic Control (VDC) with Traction Control System (TCS)



### SV

Includes S features, plus:

- Dual Panel Moonroof and automatic on/off headlights
- Heated front seats
- 8-way power driver's seat and 4-way power front-passenger's seat
- RearView Monitor and Bluetooth<sup>®</sup> Hands-Free Phone System
- HomeLink<sup>®</sup> universal garage-door opener
- Digital Bose<sup>®</sup> audio system with USB connection port for iPod<sup>®</sup> interface and XM<sup>®</sup> Satellite Radio
- Leather-wrapped steering wheel with illuminated audio controls and Vehicle Security System



### SL

Includes SV features, plus:

- Leather-appointed seats
- Heated steering wheel
- High Intensity Discharge (HID) bi-functional Xenon projector headlights
- Power-return rear seatbacks and power liftgate
- Rain-sensing variable intermittent windshield wipers



### LE

Includes SL features, plus:

- 20" Aluminum-alloy wheels and silver-accented roof rails
- Heated rear seats
- Wood-tone trim
- Power-tilt and power-telescoping steering column with memory position



### Platinum Edition Package

Includes LE features, plus:

- Nissan Hard Drive Navigation System with XM NavTraffic<sup>®</sup>
- Streaming audio via Bluetooth<sup>®</sup> wireless technology
- 20" 7-spoke aluminum-alloy wheels
- Rear bumper protector
- Unique Platinum Edition badging
- Available exclusive Sapphire Blue Onyx exterior colour



<sup>1</sup>2012 fuel consumption estimate. Murano AWD, 11.7 L/100 km (24 mpg) city/8.5 L/100 km (33 mpg) highway. Actual mileage may vary with driving conditions – use for comparison only. <sup>2</sup>VDC, which should remain on when driving except when freeing the vehicle from mud or snow, cannot prevent accidents due to abrupt steering, carelessness, or dangerous driving techniques. Always drive safely. <sup>®</sup>The Bluetooth word mark and logos are owned by Bluetooth SIG, Inc., and any use of such marks by Nissan is under licence. <sup>®</sup>Bose is a registered trademark of The Bose Corporation. <sup>®</sup>HomeLink is a registered trademark of Johnson Controls Technology Company. <sup>®</sup>iPod is a registered trademark of Apple, Inc. All rights reserved. iPod<sup>®</sup> not included. <sup>®</sup>XM and XM NavTraffic are registered trademarks of Sirius XM Satellite Radio Inc.



## FEATURES AND SPECIFICATIONS

Engine	S	SV	SL	LE
VQ35DE – 3.5-litre DOHC 24-valve V6	<span>■</span>	<span>■</span>	<span>■</span>	<span>■</span>
Horsepower – 260 @ 6000 rpm				
Torque – 240 lb-ft @ 4400 rpm				
Emissions – Tier 2-Bin 5 (LEV2-ULEV CA)	<span>■</span>	<span>■</span>	<span>■</span>	<span>■</span>
Continuously Variable Valve Timing Control System (CVTCS)	<span>■</span>	<span>■</span>	<span>■</span>	<span>■</span>
Nissan Direct Ignition System with double-tipped iridium spark plugs	<span>■</span>	<span>■</span>	<span>■</span>	<span>■</span>
Electronic drive-by-wire throttle	<span>■</span>	<span>■</span>	<span>■</span>	<span>■</span>
Engine block heater	<span>■</span>	<span>■</span>	<span>■</span>	<span>■</span>

Drivetrain				
Intuitive All-Wheel Drive (AWD)	<span>■</span>	<span>■</span>	<span>■</span>	<span>■</span>
Xtronic CVT <sup>®</sup> (Continuously Variable Transmission)	<span>■</span>	<span>■</span>	<span>■</span>	<span>■</span>

Wheels/Tires				
18" x 7.5" 5-split spoke aluminum-alloy wheels	<span>■</span>	<span>■</span>	<span>■</span>	<span>■</span>
20" x 7.5" 5-split spoke aluminum-alloy wheels				<span>■</span>
20" x 7.5" 7-spoke aluminum-alloy wheels				<span>■</span> <sup>P</sup>
P235/65 TR18 all-season tires	<span>■</span>	<span>■</span>	<span>■</span>	<span>■</span>
P235/55 TR20 all-season tires				<span>■</span>
Tire Pressure Monitoring System (TPMS)	<span>■</span>	<span>■</span>	<span>■</span>	<span>■</span>

Brakes				
12.6" vented front disc brakes	<span>■</span>	<span>■</span>	<span>■</span>	<span>■</span>
12.1" vented rear disc brakes	<span>■</span>	<span>■</span>	<span>■</span>	<span>■</span>
4-wheel Anti-lock Braking System (ABS)	<span>■</span>	<span>■</span>	<span>■</span>	<span>■</span>
Electronic Brake force Distribution (EBD)	<span>■</span>	<span>■</span>	<span>■</span>	<span>■</span>
Brake Assist (BA)	<span>■</span>	<span>■</span>	<span>■</span>	<span>■</span>

Suspension/Steering				
Front: Independent strut suspension	<span>■</span>	<span>■</span>	<span>■</span>	<span>■</span>
Rear: Independent multi-link suspension	<span>■</span>	<span>■</span>	<span>■</span>	<span>■</span>
Front and rear stabilizer bar	<span>■</span>	<span>■</span>	<span>■</span>	<span>■</span>
Vehicle-speed-sensitive power steering	<span>■</span>	<span>■</span>	<span>■</span>	<span>■</span>

Exterior				
High Intensity Discharge (HID) bi-functional Xenon headlights			<span>■</span>	<span>■</span>
Automatic on/off headlights		<span>■</span>	<span>■</span>	<span>■</span>
Fog lights	<span>■</span>	<span>■</span>	<span>■</span>	<span>■</span>
Dual power heated outside mirrors	<span>■</span>	<span>■</span>	<span>■</span>	<span>■</span>
Dual Panel Moonroof with power slide/tilt feature and power sliding shades		<span>■</span>	<span>■</span>	<span>■</span>
Black roof rack rails	<span>■</span>	<span>■</span>	<span>■</span>	<span>■</span>
Silver-accented roof rails				<span>■</span>
Rear bumper protector				<span>■</span> <sup>P</sup>
Power liftgate			<span>■</span>	<span>■</span>
Unique Platinum Edition badging				<span>■</span> <sup>P</sup>
UV-reducing solar glass	<span>■</span>	<span>■</span>	<span>■</span>	<span>■</span>
Rear black privacy glass	<span>■</span>	<span>■</span>	<span>■</span>	<span>■</span>
Splash guards	<span>■</span>	<span>■</span>	<span>■</span>	<span>■</span>

Entertainment				
AM/FM/in-dash 6-CD audio system with 6 speakers	<span>■</span>			
Digital Bose <sup>®</sup> audio system with AM/FM/CD with 11 speakers, including 2 subwoofers		<span>■</span>	<span>■</span>	<span>■</span>
XM <sup>®</sup> Satellite Radio <sup>1</sup>		<span>■</span>	<span>■</span>	<span>■</span>
MP3/WMA CD playback capability	<span>■</span>	<span>■</span>	<span>■</span>	<span>■</span>

Entertainment (continued)	S	SV	SL	LE
Auxiliary audio input jack	<span>■</span>			
Auxiliary audio/video input jacks		<span>■</span>	<span>■</span>	<span>■</span>
USB connection port for iPod <sup>®</sup> interface and other compatible devices		<span>■</span>	<span>■</span>	<span>■</span>
Streaming audio via Bluetooth <sup>®</sup> wireless technology				<span>■</span> <sup>P</sup>
Radio Data System (RDS)				<span>■</span>
Speed-sensitive audio volume		<span>■</span>	<span>■</span>	<span>■</span>
Illuminated steering-wheel-mounted audio controls	<span>■</span>	<span>■</span>	<span>■</span>	<span>■</span>

Interior				
Nissan Hard Drive Navigation System with 178 mm (7.0") VGA touch-screen monitor and voice recognition				<span>■</span> <sup>P</sup>
XM NavTraffic <sup>®2</sup>				<span>■</span> <sup>P</sup>
RearView Monitor		<span>■</span>	<span>■</span>	<span>■</span>
Vehicle Information Centre	<span>■</span>			
Vehicle Information Centre with 178 mm (7.0") QVGA colour monitor		<span>■</span>	<span>■</span>	<span>■</span>
Fine Vision electroluminescent gauges	<span>■</span>	<span>■</span>	<span>■</span>	<span>■</span>
Bluetooth <sup>®</sup> Hands-Free Phone System	<span>■</span>	<span>■</span>	<span>■</span>	<span>■</span>
HomeLink <sup>®</sup> universal garage-door opener	<span>■</span>	<span>■</span>	<span>■</span>	<span>■</span>
Dual-zone Automatic Climate Control (ACC) with in-cabin microfilter	<span>■</span>	<span>■</span>	<span>■</span>	<span>■</span>
Driver's seat, steering wheel and outside mirror position memory				<span>■</span>
Cruise control with illuminated steering-wheel-mounted switches	<span>■</span>	<span>■</span>	<span>■</span>	<span>■</span>
Nissan Intelligent Key <sup>®</sup> with Push Button Ignition	<span>■</span>	<span>■</span>	<span>■</span>	<span>■</span>
Power windows with front one-touch auto-up/down	<span>■</span>	<span>■</span>	<span>■</span>	<span>■</span>
Power door locks with auto-locking feature	<span>■</span>	<span>■</span>	<span>■</span>	<span>■</span>
Remote front windows down	<span>■</span>	<span>■</span>	<span>■</span>	<span>■</span>
Tilt and telescoping steering column	<span>■</span>	<span>■</span>	<span>■</span>	<span>■</span>
Power tilt and telescoping steering column				<span>■</span>
Variable intermittent speed-sensitive windshield wipers	<span>■</span>	<span>■</span>	<span>■</span>	<span>■</span>
Rain-sensing variable intermittent windshield wipers			<span>■</span>	<span>■</span>
Rear intermittent wiper	<span>■</span>	<span>■</span>	<span>■</span>	<span>■</span>
Auto-dimming rearview mirror with compass		<span>■</span>	<span>■</span>	<span>■</span> <sup>3</sup>
Height-adjustable outboard seat belts	<span>■</span>	<span>■</span>	<span>■</span>	<span>■</span>
Sun visors with extenders and illuminated visor vanity mirrors	<span>■</span>	<span>■</span>	<span>■</span>	<span>■</span>
Interior mood lighting and welcome lighting	<span>■</span>	<span>■</span>	<span>■</span>	<span>■</span>
Overhead map lights and rear reading lights	<span>■</span>	<span>■</span>	<span>■</span>	<span>■</span>
Three 12-volt DC power outlets	<span>■</span>	<span>■</span>	<span>■</span>	<span>■</span>
Dual-level centre console storage	<span>■</span>	<span>■</span>	<span>■</span>	<span>■</span>
Front seatback pockets	<span>■</span>	<span>■</span>	<span>■</span>	<span>■</span>
Retractable cargo cover	<span>■</span>	<span>■</span>	<span>■</span>	<span>■</span>
Foldable cargo organizer	<span>■</span>	<span>■</span>	<span>■</span>	<span>■</span>
Cargo area tie-down hooks and rings (8)	<span>■</span>	<span>■</span>	<span>■</span>	<span>■</span>

Seating/Appointments				
6-way manual adjustable driver's seat	<span>■</span>			
8-way power adjustable driver's seat		<span>■</span>	<span>■</span>	<span>■</span>
Manual adjustable driver's seat lumbar	<span>■</span>			
Power adjustable driver's seat lumbar		<span>■</span>	<span>■</span>	<span>■</span>
4-way manual front-passenger's seat	<span>■</span>			

Seating/Appointments (continued)	S	SV	SL	LE
4-way power front-passenger's seat		<span>■</span>	<span>■</span>	<span>■</span>
Heated front seats		<span>■</span>	<span>■</span>	<span>■</span>
Heated rear seats			<span>■</span>	<span>■</span>
Heated steering wheel			<span>■</span>	<span>■</span>
Reclining rear seatbacks with center armrest	<span>■</span>	<span>■</span>	<span>■</span>	<span>■</span>
60/40 Split fold-flat rear seatbacks with cargo area-accessible releases	<span>■</span>	<span>■</span>	<span>■</span>	<span>■</span>
Power-return rear seatbacks			<span>■</span>	<span>■</span>
Cloth seat trim	<span>■</span>	<span>■</span>		
Leather seating surfaces			<span>■</span>	<span>■</span>
Leather-wrapped steering wheel		<span>■</span>	<span>■</span>	<span>■</span>
Leather-wrapped shift knob	<span>■</span>	<span>■</span>	<span>■</span>	<span>■</span>
Aluminum accents	<span>■</span>	<span>■</span>	<span>■</span>	<span>■</span>
Wood-tone trim				<span>■</span>

Safety/Security				
Nissan Advanced Airbag System (AABS) with dual-stage supplemental front airbags with seat belt and occupant-classification sensors	<span>■</span>	<span>■</span>	<span>■</span>	<span>■</span>
Driver and front-passenger seat-mounted side-impact supplemental airbags	<span>■</span>	<span>■</span>	<span>■</span>	<span>■</span>
Roof-mounted curtain side-impact supplemental airbags for front and rear-seat outboard occupants				<span>■</span>
Head protection with rollover sensor	<span>■</span>	<span>■</span>	<span>■</span>	<span>■</span>
Vehicle Dynamic Control (VDC) with Traction Control System (TCS)	<span>■</span>	<span>■</span>	<span>■</span>	<span>■</span>
3-point ALR/ELR passenger seat belt system (ELR for driver)	<span>■</span>	<span>■</span>	<span>■</span>	<span>■</span>
Front seat belts with pre-tensioners and load limiters	<span>■</span>	<span>■</span>	<span>■</span>	<span>■</span>
Front-seat Active Head Restraints and three rear-seat head restraints	<span>■</span>	<span>■</span>	<span>■</span>	<span>■</span>
LATCH System (Lower Anchors and Tethers for CHildren)	<span>■</span>	<span>■</span>	<span>■</span>	<span>■</span>
Child-safety rear door locks	<span>■</span>	<span>■</span>	<span>■</span>	<span>■</span>
Zone Body construction with front and rear crumple zones	<span>■</span>	<span>■</span>	<span>■</span>	<span>■</span>
Energy-absorbing steering column	<span>■</span>	<span>■</span>	<span>■</span>	<span>■</span>
Hood-buckling creases	<span>■</span>	<span>■</span>	<span>■</span>	<span>■</span>
High-strength steel side-door guard beams	<span>■</span>	<span>■</span>	<span>■</span>	<span>■</span>
Immobilizer Key System	<span>■</span>	<span>■</span>	<span>■</span>	<span>■</span>
Anti-theft system		<span>■</span>	<span>■</span>	<span>■</span>

## PACKAGE

■ **LE Platinum Edition Package**

Nissan Hard Drive Navigation System with 178 mm (7.0") VGA touch-screen monitor and voice recognition • XM NavTraffic<sup>®2</sup> • DVD playback capability

- Streaming audio via Bluetooth<sup>®</sup> wireless technology
- 20" 7-spoke aluminum-alloy wheels
- Rear bumper protector
- Unique Platinum Edition badging
- Available exclusive Sapphire Blue Onyx exterior colour

## DIMENSIONS/CAPACITIES

Dimensions – mm (inches)	
<b>Exterior</b>	
Wheelbase	<b>2825 (111.2)</b>
Overall length	<b>4823 (189.9)</b>
Overall width	<b>1883 (74.1)</b>
Overall height with roof rails	<b>1728 (68.0)</b>
Track width (front/rear)	<b>1610/1610 (63.4/63.4)</b>
Step-in height	<b>472/474 (18.6/18.7)</b>

<b>Interior (front/rear)</b>	
Head room	
With moonroof	<b>972/968 (38.3/38.1)</b>
Without moonroof	<b>1018/1001 (40.1/39.4)</b>
Leg room	<b>1107/922 (43.6/36.3)</b>
Shoulder room	<b>1515/1490 (59.6/58.7)</b>

<b>Cargo Space</b>	
Length (with rear seat up)	<b>753 (29.6)</b>
Width	<b>1391 (54.7)</b>
Height	<b>826 (32.5)</b>

Capacities	
Interior passenger volume – L (cu. ft.)	
With moonroof	<b>2968 (104.8)</b>
Without moonroof	<b>3075 (108.6)</b>
Cargo volume – L (cu. ft.)	
With rear seat up	<b>895 (31.6)</b>
With rear seat down	<b>1812 (64.0)</b>
Maximum towing capacity – kg (lbs.)	<b>1588 (3,500)</b>
Fuel tank – L (Imp gal)	<b>82 (18)</b>

Curb Weights – kg (lbs)	S	SV	SL	LE
Xtronic CVT <sup>®</sup>	<b>1831 (4037)</b>	<b>1869 (4120)</b>	<b>1891 (4169)</b>	<b>1905 (4200)</b>

2012 Fuel Consumption Estimates – L/100 km (mpg)	
City	<b>11.7 (24)</b>
Hwy	<b>8.5 (33)</b>

<sup>1</sup>Actual mileage may vary with driving conditions – use for comparison only.

■ Standard

■ Part of LE Platinum Edition Package

<sup>1</sup>XM<sup>®</sup> Satellite Radio is available in the 10 Canadian provinces and the 48 contiguous United States. Basic monthly subscription required and sold separately after trial period. Subscription subject to customer agreement at xmradio.ca. All fees and programming subject to change. ©2011 Sirius XM Canada Inc. The Sirius and XM names and all related marks and logos are trademarks of Sirius XM Radio Inc. All other trademarks are the property of their respective owners.

<sup>2</sup>XM NavTraffic<sup>®</sup> is available in select North American markets. In Canada, at time of printing, incident data is available for 7 metropolitan areas of Canada (Vancouver, Calgary, Edmonton, Toronto, Ottawa, Montreal and Quebec City). Limited flow data is available for Toronto. Subscription sold separately after trial period. Subscriptions subject to customer agreement at xmradio.ca. Fees and programming subject to change. ©2011 Sirius XM Canada Inc. XM name and XM NavTraffic are registered trademarks of Sirius XM Radio Inc. All other trademarks and channel names are property of their respective owners.

<sup>3</sup>LE Platinum Edition Package replaces compass in rearview mirror with Nissan Navigation System compass. <sup>®</sup>The Bluetooth word mark and logos are owned by Bluetooth SIG, Inc., and any use of such marks by Nissan is under licence.

<sup>®</sup>Bose is a registered trademark of The Bose Corporation.

<sup>®</sup>HomeLink is a registered trademark of Johnson Controls Technology Company.

<sup>®</sup>iPod is a registered trademark of Apple, Inc. All rights reserved. iPod<sup>®</sup> not included.



## PAINT AND FABRIC SELECTIONS



**Tinted Bronze' CAB**

	S	SV	SL	LE
Café Latte Cloth	■	■		
Café Latte Leather			■	■ [P]



**Merlot' AX5**

	S	SV	SL	LE
Café Latte Leather				■ [P]
Charcoal Cloth		■		
Charcoal Leather			■	■ [P]



**Blue Lightning' RAQ**

	S	SV	SL	LE
Charcoal Cloth		■		
Charcoal Leather			■	■ [P]



**Carbon Silver' K51**

	S	SV	SL	LE
Charcoal Cloth	■	■		
Charcoal Leather			■	■ [P]



**Hakone White' QAB**

	S	SV	SL	LE
Café Latte Cloth		■		
Café Latte Leather			■	■ [P]



**Ebony KH3**

	S	SV	SL	LE
Café Latte Leather				■ [P]
Charcoal Cloth	■	■		
Charcoal Leather			■	■ [P]



**Airstream' K23**

	S	SV	SL	LE
Charcoal Cloth	■	■		
Charcoal Leather			■	■ [P]



**Sapphire Blue Onyx<sup>1,2</sup> B20**

	S	SV	SL	LE
Café Latte Leather				■ [P]
Charcoal Leather				■ [P]

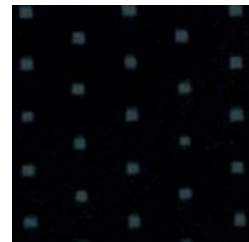
**Café Latte Cloth**



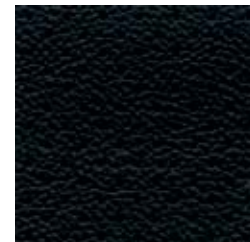
**Café Latte Leather**



**Charcoal Cloth**



**Charcoal Leather**



■ Standard

[P] Part of LE Platinum Edition Package

<sup>1</sup>Extra cost option.

<sup>2</sup>Platinum Edition Package only.

Nissan has taken care to ensure that the colour swatches presented here are the closest possible representations of actual vehicle colours. Swatches may vary slightly due to the printing process and whether viewed in daylight, fluorescent or incandescent light. Please see your local Nissan Dealership for actual colours and pricing information.

## ACCESSORIZE.

Every Genuine Nissan Accessory is:

- Custom-fit, custom-designed and durability-tested.
- Backed by Nissan's 3 year/60,000 km Accessories limited warranty<sup>3</sup>
- Easy to finance with vehicle purchase, for just a few dollars a month.

See your Nissan dealer for details, or go to [accessories.nissan.ca](http://accessories.nissan.ca)

Stainless Steel Rear Bumper Protector



Illuminated Kick Plates



All-season Rubber Floor Mats



## COMMITMENT.

Buying and owning a Nissan is like driving one: quick, convenient, confidence-inspiring.



Continue your excitement at [nissan.ca](http://nissan.ca) You'll find virtual product demonstrations, a way to "build your own Nissan," a dealer locator, and more information about key Nissan support and services.



Choose your model

Select colours

Request a quote

**Finance Options** Through Nissan Canada Finance, we offer many attractive purchase and lease programs, all with competitive rates and terms. With our flexible finance options, driving home a new Nissan has never been easier. Consult your local Nissan Dealership for complete details.

**No-Nonsense Warranty** Every 2012 Nissan is covered by a 3 year/60,000 km<sup>4</sup> Comprehensive New Vehicle Warranty, a 5 year/100,000 km<sup>4</sup> Powertrain Warranty, an 8 year/130,000 km<sup>4</sup> Emission Control Warranty on selected components, and a 5 year/unlimited km Corrosion Perforation Warranty. As a Nissan owner, you'll also receive a 3 year Roadside Assistance program available to you 24 hours a day. Terms, conditions and exclusions apply. See Warranty Information Booklet for complete details.

**Added Security Plan (ASP)** For ultimate peace of mind, consider the Nissan Added Security Plan. It's our commitment to be there for you, and to help you leave your worries behind. Different plans, available for both purchased and leased vehicles, let you tailor the coverage to your driving habits.

Nissan's philosophy toward the environment, "Seeking a symbiosis of people, vehicles and nature," describes our ideal for a sustainable mobile society, now and in the future. We launched the Nissan Green Program with specific objectives to realize this goal, and we are pursuing it energetically.



<sup>3</sup>See your Nissan Dealership and read the actual limited warranty. <sup>4</sup>Whichever comes first.





## INNOVATION WITH STYLE. INNOVATION FOR ALL. NISSAN MURANO®

At Nissan, innovation is at the core of everything we do. It's about turning our ideas and dreams into something that makes a difference in your life, every time you get behind the wheel. So imagine driving a Murano, with all of this at your fingertips:

**Smooth power.** Murano's virtually gearless Continuously Variable Transmission (CVT) eliminates gear hunting and lets you ride a seamless wave of power.

**More on-time arrivals.** Available touch-screen navigation does more than just point the way, with real-time traffic updates and Lane Guidance that directs you to the appropriate turn lane!

**Great grip.** Murano's available intuitive All-Wheel Drive not only helps enhance traction in slippery conditions, it's also designed to be responsive and great fun to drive.

**Effortless versatility.** Available rear seats that power back up into place and an available power liftgate you control from your driver's seat put convenience at your fingertips.



SHIFT the way you move

visit [www.nissan.ca](http://www.nissan.ca)

Factory-installed option. Never program while driving. GPS mapping may not be detailed in all areas or reflect current road regulations. All illustrations, photographs and specifications in this brochure are based on the latest product information. See actual vehicle for complete accuracy. Nissan Canada Inc. reserves the right to make changes at any time, without notice, in prices, colours, materials, equipment, specifications and models, and to discontinue models or equipment. For information on additional options and accessories, contact your Nissan Dealership. Registered trademarks are property of their respective owners.

At [nissan.ca](http://nissan.ca), you'll find virtual product demonstrations, a way to "build your own Nissan," a dealer locator, and more information about key Nissan support services. The Nissan names, logos, product names, feature names, and slogans are trademarks owned by or licensed to Nissan Motor Co. Ltd. and/or its North American subsidiaries. **Always wear your seat belt, and please don't drink and drive.** Printed in November 2011. Catalogue number: 99999-MUR12EN. © 2011 Nissan Canada Inc. All rights reserved.