



SHIFT_

2013
XTERRA[®]



LIFE. UNPAVED.

THE FEELING OF INNOVATION.

The fun begins where the pavement ends. And with a potent 261 horsepower and serious off-road capabilities, the unpaved world is yours for the taking. Gear up with a roof rack so radically versatile, it's often imitated, but never equalled. Got mud? You've got a ventilated gear box on the roof and an Easy Clean® cargo area in the back that just wipes down.¹ And, no matter how long the journey, NissanConnect™ puts entertainment and navigation right at hand.² So where are we heading? 2013 Nissan Xterra.

Nissan. Innovation that excites.™



¹Cargo and load capacity limited by weight and distribution. Always secure all cargo. Heavy loading of the SUV with cargo, especially on the roof, will affect the handling and stability of the vehicle. ²Certain remote functions require compatible phone, not included with vehicle. Cellular network and vehicle services provided by independent companies not within Nissan's control. Cellular network not available in all areas. Certain connected vehicle services, including but not limited to Points of Interest and Send-to-Car, may require subscription and owner consent to activate. Should service provider terminate/restrict service, service may be suspended or terminated without notice or liability to Nissan and/or its agents. Nissan not responsible for any equipment replacement or upgrades, or associated costs, that may be required for continued operation due to service changes. Standard text rates, voice minutes, roaming charges and/or data usage may apply.

Nissan Xterra PRO-4X[®] shown in Lava Red.



**LIGHT THE TORCHES
AND RIDE INTO THE NIGHT.**

Nissan Xterra PRO-4X[®] shown in Metallic Blue.

261 HP **281** LB-FT
OF TORQUE



PERFECT WHEN YOU NEED TO MAKE TRACKS.

No matter how you slice it, Xterra is built to deliver. A potent 4.0-liter DOHC 24-valve V6 gives you the power to climb faster and farther, while advanced friction-reducing technologies help keep it all moving smoothly. Continuously Variable Valve Timing delivers heightened efficiency and on-demand power, which is important when you're towing up to 5,000 lbs.¹ Mix it all with some serious attitude and you've got one tough machine. Go make your mark.

Nissan Xterra PRO-4X[®] shown in Brilliant Silver.

¹See Nissan Towing Guide and Owner's Manual for proper use. Cargo and load capacity limited by weight and distribution. Always secure all cargo. Heavy loading of the SUV with cargo, especially on the roof, will affect the handling and stability of the vehicle.

THE FEELING NO ONE'S BEEN HERE BEFORE.

Finding a little solitude is good for the soul. And Xterra equipped with 4-Wheel Drive is up for the challenge. Not only is it packed with advanced technologies ready to conquer the trail, it's also equipped with hard-core 4x4 components. From a fully boxed ladder frame to a locking rear differential, this vehicle goes where few dare follow.

Locking Rear Differential.¹ When 4-Wheel Drive just isn't enough, activate the available electronic locking rear differential. This technology delivers equal power to both rear wheels to boost traction and help keep your Xterra moving forward. Helping you reach your destination even in the gnarliest trail conditions.

Hill Start Assist.² Works on the uphill swing to help prevent rolling backward when you're starting from a stop on an incline. This system applies the brakes for a few moments, allowing you time to switch from the brake pedal to the accelerator.

Hill Descent Control.² What goes up must come down. Xterra's hill descent control automatically adjusts your speed and brake pressure to help keep you going at a controlled speed, freeing you up to concentrate on navigating difficult off-road situations.

Shift-on-the-Fly. Go where the wind – or whim – takes you, with a twist of a dial. The highly capable Xterra 4WD system features shift-on-the-fly 4-Wheel Drive with a 2-speed transfer case, so you can go from 2WD to 4H at speeds up to 62 mph.



Nissan Xterra PRO-4X[®] shown in Night Armor.

¹PRO-4X models only. ²PRO-4X models with automatic transmission only. Cargo and load capacity limited by weight and distribution. Heavy loading of the SUV with cargo, especially on the roof, will affect the handling and stability of the vehicle.



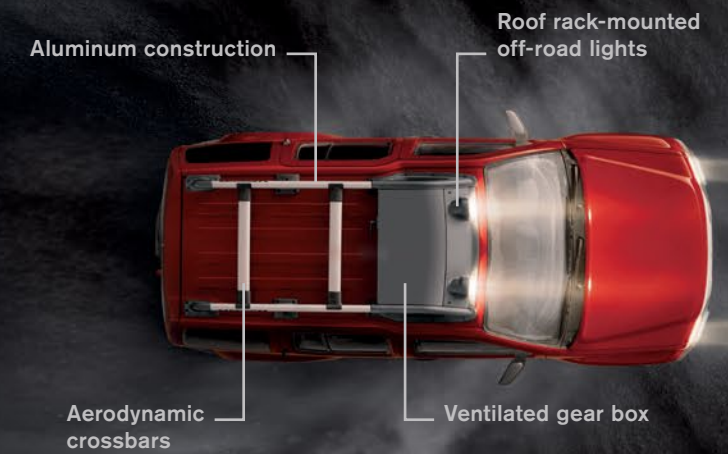
TAKING IT FROM THE TOP.

It's pure heads-up innovation. With so many choices, the iconic Xterra roof rack begs you to take every last item. From its heavy-duty integrated gear box to its long list of available accessories, the only option it doesn't offer is turning back.



Versatile in every way. Starting with 6063-grade aluminum construction and up to 150-lb. capacity. An available gear box is ventilated for wet, dirty stuff, and removable to make way for larger items. Aerodynamic crossbars open up all kinds of possibilities, and casting a mighty beam every step of the way are available off-road lights mounted right on the rack.†

Cargo and load capacity limited by weight and distribution. Always secure all cargo. Heavy loading of the SUV with cargo, especially on the roof, will affect the handling and stability of the vehicle.





FIT TO BE TIED.

Bring what you will, Xterra adapts. Latch it down with multiple hooks, or use the innovative Utili-track® cargo channel system to easily secure your gear. Clean up quick with the Easy Clean® cargo area. Stash more goods in the hidden storage space. This is the definition of versatility.¹



Bring what you need. Whatever it is, Xterra is ready to make it fit. A 60/40 split rear seat and fold-flat front seat give you plenty of options, while an available first aid kit is nestled in its own nook in the back hatch, just in case. Be ready to accommodate just about anything, and never ditch a friend for a longboard again.¹

Secure your gear with ease. The Utili-track cargo channel system slides and locks into any position, giving you the means to accommodate just about any activity you can think of. Load it, lock it, start your adventure. Oversize hooks in the ceiling make securing your gear a cinch. Strap it down and get out there!¹

¹Cargo and load capacity limited by weight and distribution. Always secure all cargo. Heavy loading of the SUV with cargo, especially on the roof, will affect the handling and stability of the vehicle.





DESIGNED FOR ROCKING OUT, CHECKING IN, EVEN BACKING UP.

Pump up your experience and keep up connections. With available features like a booming Rockford Fosgate sound system and Bluetooth® Hands-free Phone System,¹ Xterra has the technology to keep you rocking and talking no matter where the trail takes you. And with the new available RearView Monitor, hooking up the boat, the dirt bikes – or just nabbing that parking space in town – has never been easier.²



RearView Monitor. Whether negotiating a tight parking space or lining up to attach a trailer, Xterra's new RearView Monitor – included with the available Nissan Navigation System – is like having an extra pair of eyes where you need them most.^{2,3}



Designed exclusively for the Xterra's interior, the Rockford Fosgate audio system features nine speakers and an enclosed subwoofer for massive sound.



Go far off the beaten path, but stay in touch just by pushing a button on the steering wheel. It's voice-activated, and lets you program in up to 40 numbers with easy access.¹

¹Availability of specific features is dependent upon the phone's Bluetooth® support. Please refer to your phone Owner's Manual for details. The Bluetooth word mark and logos are owned by Bluetooth SIG, Inc., and any use and accessory equipment of such marks by Nissan is under license. ²Parking aid/convenience feature. Cannot completely eliminate blind spots or warn of moving objects. May not detect every object. Always check surroundings before moving vehicle. Not a substitute for proper backing procedures. Always turn to check what is behind you before backing up. ³Never program while driving. GPS mapping may not be detailed in all areas or reflect current road regulations.

NISSAN CONNECT^{SM 1}

YOUR MUSIC YOUR WORLD

ANY WAY YOU WANT IT.

Why settle for just the radio? By putting the latest technologies right at your fingertips, Xterra gives you all you need for hours of endless entertainment. Rock on.

Streaming audio via Bluetooth.* Want to let your passengers play DJ? Just connect a Bluetooth®-enabled audio device to stream music wirelessly, from any seat in the cabin.²

Pandora® radio capability. Looking for something new? Explore music based on your hand-picked favorites using Pandora® radio capability. Connect your Pandora®-equipped iPhone® through the audio system to listen to Pandora® free internet radio and use the 'thumbs up' or 'thumbs down' icons to rate songs – all right in the display.

iPod®/USB input. Wouldn't you like to be able to listen to your own playlists or podcasts? With the available iPod®/USB input, you can. Plug in your iPod® or other portable MP3 player through the USB port and control it through Xterra's audio controls.³

ALWAYS UP TO DATE.

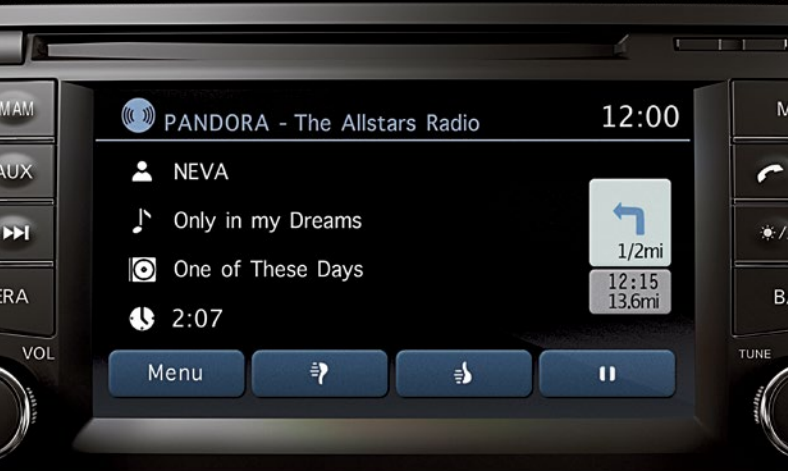
Navigate your way through the concrete canyons, or call up some friends. The NissanConnectSM system is compatible with Google® services and can even help you find that new restaurant. Now that's smart.^{1,4}

Nissan Navigation System. Xterra's available 5.8-inch touch-screen display offers NavTraffic and NavWeather for real-time advisories to keep you on the move. Plus over five million points of interest, so you'll always have something new to discover.^{4,5}

Points of Interest powered by Google.* Find that new restaurant in a snap. NissanConnect's compatibility with Google® Points of Interest lets you search for a location, even without knowing the name or category. Once you find it, select it and you're on your way.¹

Google® Send-To-Car. NissanConnect's compatibility with Google® Send-To-Car lets you send any address to your Nissan Navigation System using your favorite connected device, like a smartphone or computer. When you start the truck and connect to the network, the directions will be delivered and loaded into your navigation system.^{1,4}

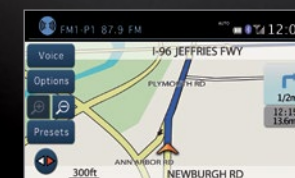
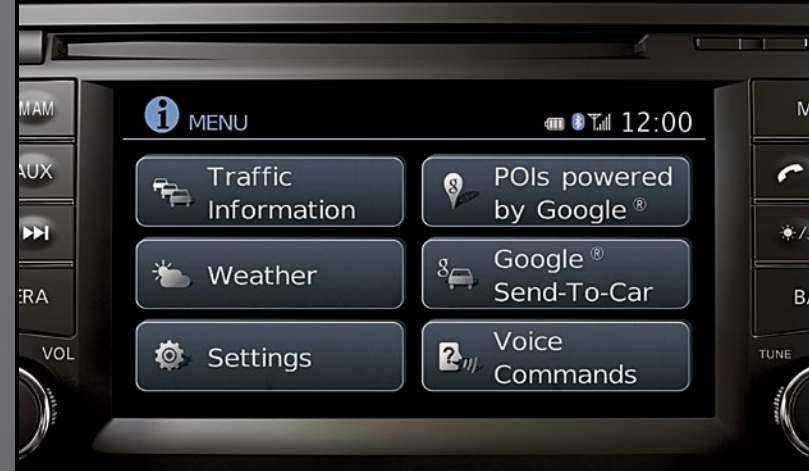
Hands-free text messaging assistant. Now you can receive and respond to text messages without ever touching your phone. With a press of a button, have your text messages read to you and answer with pre-loaded responses, all via voice recognition.⁶



BLUETOOTH®



IPOD®



NAVIGATION MAP



WEATHER



¹Certain remote functions require compatible phone, not included with vehicle. Cellular network and vehicle services provided by independent companies not within Nissan's control. Cellular network not available in all areas. Certain connected vehicle services, including but not limited to Points of Interest and Send-to-Car, may require subscription and owner consent to activate. Should service provider terminate/restrict service, service may be suspended or terminated without notice or liability to Nissan and/or its agents. Nissan not responsible for any equipment replacement or upgrades, or associated costs, that may be required for continued operation due to service changes. Standard text rates, voice minutes, roaming charges and/or data usage may apply. ²Availability of specific features is dependent upon the phone's Bluetooth® support. Please refer to your phone Owner's Manual for details. The Bluetooth word mark and logos are owned by Bluetooth SIG, Inc., and any use of such marks by Nissan is under license. ³Driving is serious business and requires your full attention. Do not operate any devices connected to the USB or auxiliary audio input jack while driving. ⁴Never

program while driving. GPS mapping may not be detailed in all areas or reflect current road regulations. ⁵Required SiriusXM Satellite Radio, NavTraffic and NavWeather subscriptions sold separately after trial period. Installation costs, one-time activation fee, other fees and taxes will apply. NavTraffic available in select markets. Services available only to those 18 or older in the 48 contiguous states and D.C. Fees and programming subject to change. Subscriptions governed by Customer Agreement available at siriusxm.com. ©2012 Sirius XM Radio Inc. Sirius, XM and all related marks and logos are trademarks of Sirius XM Radio Inc. ⁶Use the text messaging feature after stopping your vehicle in a safe location. If you have to use the feature while driving, exercise extreme caution at all times so full attention may be given to vehicle operation. Google® is a registered trademark of Google Inc. iPod® is a registered trademark of Apple, Inc. All rights reserved. iPod not included. Pandora® is a registered trademark of Pandora Media.

AVOID BEING BETWEEN A ROCK AND A HARD PLACE.

Nissan looks at safety from all perspectives. That's why Xterra is not only agile and responsive in its handling, our innovative advanced technology helps anticipate trouble before you do. And, its incredibly strong structure and Zone Body construction, plus an advanced air bag system, combine to help protect you.

Standard Vehicle Dynamic Control (VDC) helps you stay on your steered path. If your vehicle begins to oversteer (fishtail) or understeer (plow forward), VDC (sometimes known as Stability Control) compensates by reducing engine power and/or applying appropriate brake pressure to specific wheels.¹

Standard Anti-lock Braking System (ABS) rapidly pumps the brakes during hard braking to help prevent your wheels from locking, helping you maintain steering control.

Brake Override Technology. Like every Nissan since 2005, Xterra comes standard with Brake Override Technology. It's designed to help slow down your vehicle and bring it to a safe stop in an emergency by overriding accelerator input and reducing engine power when the accelerator and brake pedals are applied simultaneously.

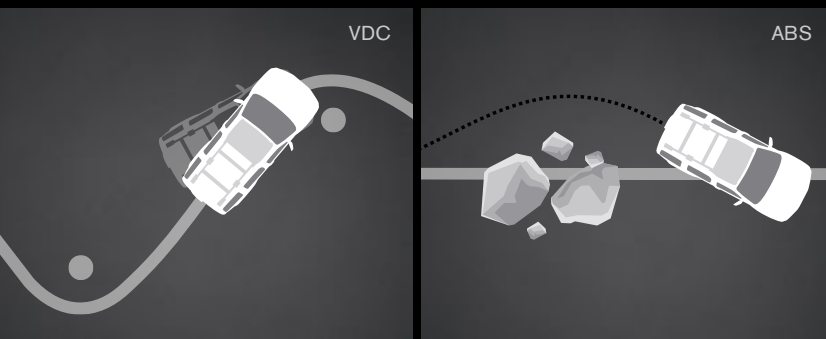
6
STANDARD AIR BAGS²

Air Bag Technology.² Nissan's Advanced Air Bag System (AABS) includes standard dual-stage supplemental front air bags that incorporate seat belt sensors and an occupant-classification sensor. The inflation rate of these dual-stage air bags adjusts depending on crash severity and seat belt usage. If the front passenger seat is empty, a sensor will deactivate the bag. In addition, front seat-mounted side-impact supplemental air bags are built into the seats, so they move with you as you adjust your seating position.² Up above are standard roof-mounted curtain supplemental air bags, offering enhanced head protection for both rows of outboard occupants.²

Ready with a rollover sensor. In the unlikely event of a rollover, Xterra is poised to respond. All models have a sensor that detects an impending rollover and deploys both curtain air bags.²

Zone Body construction helps absorb crash energy to protect the occupant compartment if the unavoidable happens. It includes front and rear crumple zones, energy-absorbing frame side-members and crossmembers, a reinforced body structure and bumper heights designed for compatibility with other vehicles. All to help lessen the effects of an impact and protect your family.

snug kids™ Nissan safety engineers have dedicated thousands of hours to evaluating hundreds of child restraints in Nissan vehicles. The result: An industry first, The Snug Kids Child Safety Seat Fit Guide. This guide lists child seats that fit the rear seats of Nissan vehicles, as well as offers invaluable tips on correct installation. Look for the latest Fit Guide at NissanUSA.com/SnugKids



¹VDC, which should remain on when driving except when freeing the vehicle from mud or snow, cannot prevent accidents due to abrupt steering, carelessness, or dangerous driving techniques. Always drive safely. ²Air bags are only a supplemental restraint system; always wear your seat belt. Even with the occupant-classification sensor, rear-facing child restraints should not be placed in the front-passenger's seat. Also, all children 12 and under should ride in the rear seat properly secured in child restraints, booster seats, or seat belts according to their size. Air bags will only inflate in certain accidents. See your Owner's Manual for more details. Inflated air bags shown for illustration purposes only, actual coverage area may differ. Air bags deflate after deployment.



**GENUINE NISSAN ACCESSORIES.
IMPRESS. CONNECT. PROTECT. ORGANIZE.**

Every Genuine Nissan Accessory is: custom-fit, custom-designed and durability-tested; backed by Nissan's 3-year/36,000-mile limited warranty; and can be financed when installed by dealer at time of purchase.¹

- A. Roof Rail Crossbars²**
You'll really get attached to them.
- B. Hood Protector**
Keeps bugs and dirt from driving you buggy.
- C. All-season Floor Mats**
You've seen the bottom of your shoes.
- D. Fog Lights**
Cut like a knife through pea soup.
- E. Sliding Cargo Divider²**
Divide and conquer all your stuff.
- F. Hatch Tent**
It's your Xterra! It's your campsite! It's both!
- G. Body Side Moldings and Step Rails**
Step right up to convenience and protection. Sold separately.
- H. Retractable Cargo Cover**
Protects from prying eyes and sticky fingers.

Additional Accessories:

- Carpeted Cargo Mat
- Pet Guard Divider
- Auto-dimming Rearview Mirror with Compass
- Sliding Cargo Organizer
- Splash Guards
- Side-window Deflectors
- And More

¹Covered by Nissan's Limited Warranty on Genuine Nissan Accessories for the longer of 12 months/12,000 miles or the remaining period under the 3-year/36,000-mile Nissan New Vehicle Limited Warranty. Terms and conditions apply. See Warranty Information Booklet for details. ²Cargo and load capacity limited by weight and distribution. Always secure all cargo. Heavy loading of the SUV with cargo, especially on the roof, will affect the handling and stability of the vehicle.

GEAR UP FOR ADVENTURE.



For more information and to shop online for Genuine Nissan Accessories, go to parts.NissanUSA.com.

Nissan Xterra PRO-4X^{*} shown in Cayenne Red with Fog Lights, Body Side Moldings, Splash Guards, Side-window Deflectors, Step Rails, Hood Protector and Gear Box.

CHOOSE FROM THESE TRIM LEVELS

X (4x2 and 4x4)

- 16" Steel wheels
- P265/70R16 BFGoodrich® Radial Long Trail T/A® OWL tires
- Vehicle Dynamic Control (VDC)
- Active Brake Limited Slip (ABLS)
- 4-wheel Anti-lock Braking System (ABS)
- Tubular roof rack with airdam
- Power door locks and windows
- Remote keyless entry
- Vehicle Security System
- Six standard air bags



S (4x2) and (4x4)

INCLUDES X EQUIPMENT PLUS:

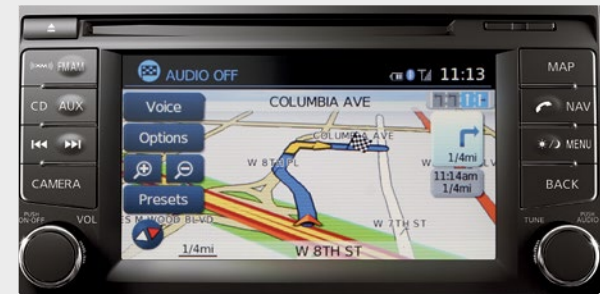
- 16" Aluminum-alloy wheels
- Front tow hook (4x4 only)
- Black body side moldings
- Gear box (4x4 only)
- Splash guards (4x4 only)
- 8-way manual adjustable driver's seat
- Sun visors with vanity mirrors and extension
- In-cabin microfilter
- AM/FM/CD audio system with 4.3-inch color display
- Bluetooth® Hands-free Phone System
- USB connection port for iPod®¹ interface and other compatible devices
- SiriusXM Satellite Radio²
- Easy Clean® cargo area with Utili-track® Cargo-Channel System
- Two side cargo hooks and four ceiling cargo hooks
- First aid kit



PRO-4X® (4x4 only)

INCLUDES S EQUIPMENT PLUS:

- Automatic on/off headlights
- Roof rack-mounted off-road lights
- Bilsten® off-road performance shocks
- Skid plates (transfer case, oil pan and fuel tank)
- 16" Machined-finished aluminum-alloy wheels with P265/75R16 BFGoodrich® Rugged Trail T/A® OWL tires
- Electronic locking rear differential
- Hill descent control and hill start assist³
- Clutch start/cancel
- NissanConnectSM with Navigation (POIs powered by Google® and Google® Send-To-Car, hands-free text messaging assistant, Pandora® radio capability, streaming audio via Bluetooth® wireless technology)
- NavTraffic and NavWeather provided by SiriusXM²
- RearView Monitor
- Rockford Fosgate-powered AM/FM/CD audio system
- White-faced gauges



¹Always give your full attention to driving. Avoid operating your iPod® in such a way that you can be distracted during vehicle operation. See dealer for details. iPod® is a registered trademark of Apple, Inc. All rights reserved. iPod® not included. ²Required SiriusXM Satellite Radio, NavTraffic and NavWeather subscriptions sold separately after trial period. Installation costs, one-time activation fee, other fees and taxes will apply. NavTraffic available in select markets. Services available only to those 18 or older in the 48 contiguous states and D.C. Fees and programming subject to change. Subscriptions governed by Customer Agreement available at siriusxm.com. ©2012 Sirius XM Radio Inc. Sirius, XM and all related marks and logos are trademarks of Sirius XM Radio Inc. ³Automatic transmission models only. BFGoodrich® is a registered trademark of Goodrich Corporation. Bilsten® is a registered trademark of ThyssenKrupp Bilsten GmbH. Bluetooth® is a registered trademark of Bluetooth SIG, Inc. and any use of such marks by Nissan is under license. Google® is a registered trademark of Google Inc. Long Trail T/A® and Rugged Trail T/A® are registered trademarks of Uniroyal Goodrich Licensing Services, Inc.

SPECIFICATIONS

Engine	X 4x2, 4x4	S 4x2, 4x4	PRO-4X 4x4
VQ40DE – 4.0-liter DOHC 24-valve V6 engine			
— Horsepower – 261 hp @ 5,600 rpm			
— Torque – 281 lb-ft @ 4,000 rpm			
Emissions – LEV2-ULEV			
Continuously Variable Valve Timing Control			
— System (CVTCS) on intake valves			
Variable Intake System			
Nissan Direct Ignition System with platinum-tipped			
— spark plugs			
Electronic drive-by-wire throttle			

Drivetrain			
6-speed manual transmission (4x4 only)			
5-speed automatic transmission (standard on S 4x2,			
— optional on S 4x4)			
Dana® rear axle (manual transmission only)			
Switch-operated 2-speed transfer case			
Hill descent control (automatic transmission only)			
Hill start assist (automatic transmission only)			
Clutch start/cancel (manual transmission only)			
Electronic locking rear differential			

Brakes			
4-wheel vented disc brakes			
4-wheel Anti-lock Braking System (ABS) with G-sensor			
Electronic Brake force Distribution (EBD)			

Suspension/Steering			
Independent double-wishbone front suspension			
— with stabilizer bar			
Multi-leaf rear suspension with solid axle and stabilizer bar			
Bilstein® off-road performance shock absorbers			
Engine-speed-sensitive power steering			

Wheels/Tires			
16" x 7.0" steel wheels			
16" x 7.0" 5-spoke aluminum-alloy wheels			
16" x 7.0" 6-spoke machined-finished aluminum-alloy wheels			
P265/70R16 BFGoodrich® Radial Long Trail T/A® OWL tires			
P265/75R16 BFGoodrich® Rugged Trail T/A® OWL tires			
Full-size spare tire			

■ Standard

□ Optional

AC Accessory

L Part of Leather Package

V Part of Value Package

NT Part of Nevada Tow Package

Exterior Features	X 4x2, 4x4	S 4x2, 4x4	PRO-4X 4x4
Skid plate – lower radiator			
Skid plates – oil pan, fuel tank, transfer case			
Automatic on/off headlights			
Tubular roof rack with airdam			
Roof-rack-mounted off-road lights			
Roof rack crossbars			
Covered gear box (4x4 only)			
Step rails			
Rear bumper steps			
Front tow hook (4x4 only)			
Tow hitch receiver, Class III			
Hitch ball mount			
Trailer tow harness (7-pin)			
Sandblast aluminum/black front bumper			
Black body side moldings			
Splash guards (standard on S 4x4)			
Black inner headlight color			
Silver inner headlight color			
Fog lights			
Dual power outside mirrors			
UV-reducing solar glass			
Rear privacy glass			

Comfort/Convenience			
NissanConnect™ with Navigation, including 5.8-inch			
— color touch-screen monitor and voice recognition			
RearView Monitor			
NavTraffic and NavWeather powered by SiriusXM ¹			
POIs powered by Google® and Google® Send-To-Car			
Hands-free text messaging assistant			
Bluetooth® Hands-free Phone System			
Air conditioning			
In-cabin microfilter			
Voltage and oil pressure gauges			
Power windows with driver's one-touch			
— auto-down feature			
Power door locks with auto-locking feature			
Remote keyless entry			
Cruise control			
Retained accessory power and battery saver			
Tilt steering column			
Variable intermittent windshield wipers			
Rear wiper			
Auto-dimming rearview mirror with digital compass			
Auto-dimming rearview mirror with digital compass			
— and outside temperature display			
Front map lights			
Sun visors with vanity mirrors and extension			
Visor vanity mirrors			

Comfort/Convenience (continued)	X 4x2, 4x4	S 4x2, 4x4	PRO-4X 4x4
Digital clock (in radio)			
Four 12-volt DC power outlets (three on X)			
Overhead sunglasses storage			
Four cup holders and two bottle holders			
Driver's seatback pocket			
Retractable cargo cover			
Luggage side nets			
Cargo net			
Easy Clean® cargo area			
Under-floor cargo area storage			
Utili-track® Cargo-Channel System with four adjustable cleats			
Sliding cargo organizer			
Four ceiling hooks and two side hooks			
First aid kit			

Seating/Appointments			
Cloth seat trim			
Carpeted floor mats			
PRO-4X® carpeted floor mats			
PRO-4X® embroidered cloth seat trim			
PRO-4X® embroidered leather-appointed seats			
8-way manual adjustable driver's seat			
Adjustable lumbar support			
Fold-flat front-passenger's seat			
60/40 Split fold-flat rear seats			
Removable rear seat cushions			
Second-row height-adjustable head restraints			
— (outboard positions)			
Leather-wrapped steering wheel			
Leather-wrapped shift knob			
White-faced gauges			

Audio/Entertainment			
AM/FM/CD audio system			
AM/FM/CD audio system with 4.3-inch color display			
Rockford Fosgate-powered AM/FM/CD audio system			
Six speakers			
Nine high-performance speakers, including 8-inch subwoofer			
Illuminated steering wheel-mounted audio controls			
Auxiliary audio input jack			
USB connection port for iPod® interface and other			
— compatible devices			
MP3/WMA CD playback capability			
Speed-sensitive volume control			
Radio Data System (RDS)			
SiriusXM Satellite Radio ¹			
Pandora® radio capability			
Streaming audio via Bluetooth® wireless technology			

Safety/Security	X 4x2, 4x4	S 4x2, 4x4	PRO-4X 4x4
Nissan Advanced Air Bag System with dual-stage			
— supplemental front air bags with seat belt and			
— occupant-classification sensors			
Driver and front-passenger seat-mounted			
— side-impact supplemental air bags			
Roof-mounted curtain supplemental air bags			
— for side-impact and rollover head protection			
— for outboard occupants			
Vehicle Dynamic Control (VDC) with Traction Control			
— System (TCS)			
Active Brake Limited Slip (ABLS)			
Front-seat Active Head Restraints			
Front seat belts with pretensioners and load limiter			
LATCH System (Lower Anchors and Tethers			
— for Children)			
Energy-absorbing steering column			
Zone Body construction with front and rear			
— crumple zones			
Hood-buckling creases			
Pipe-style steel side-door guard beams			
Tire Pressure Monitoring System (TPMS) ²			
Nissan Vehicle Immobilizer System			
Vehicle Security System			

PACKAGE

L PRO-4X® Leather Package

PRO-4X® embroidered leather-appointed seats

This package deletes fold-flat front-passenger's seat feature. Automatic transmission models only.

ACCESSORY PACKAGES

V S Value Package

Step rails

Roof rail crossbars

Fog lights

NTV Nevada Tow Package

Tow hitch receiver, Class III

Hitch ball mount, Class III

Trailer tow harness (7-pin)

¹Required SiriusXM Satellite Radio, subscription sold separately after trial period. Installation costs, one-time activation fee, other fees and taxes will apply. Services available only to those 18 or older in the 48 contiguous states and D.C. Fees and programming subject to change. Subscriptions governed by Customer Agreement available at siriusxm.com. ©2012 Sirius XM Radio Inc. Sirius, XM and all related marks and logos are trademarks of Sirius XM Radio Inc. ²Tire Pressure Monitoring System is not a substitute for regular tire pressure checks. Dana® is a registered trademark of Dana Corporation. BFGoodrich® is a registered trademark of Goodrich Corporation. Google® is a registered trademark of Google Inc. Bilstein® is a registered trademark of ThyssenKrupp Bilstein GmbH. Long Trail T/A® and Rugged Trail T/A are registered trademarks of Uniroyal Goodrich Licensing Services, Inc. The Bluetooth® word mark and logos are owned by Bluetooth SIG, Inc., and any use of such marks by Nissan is under license.

This brochure is intended for general descriptive and informational purposes only. It is subject to change and does not constitute an offer, representation or warranty (express or implied) by Nissan North America, Inc. Interested parties should confirm the accuracy of any information in this brochure as it relates to a vehicle directly with Nissan North America, Inc., before relying on it to make a purchase decision. Nissan North America, Inc., reserves the right to make changes, at any time, without prior notice, in prices, colors, materials, equipment, specifications, and models and to discontinue models or equipment. Due to continuous product development and other pre- and post-production factors, actual vehicle, materials and specifications may vary from this brochure. Some vehicles shown with optional equipment. See the actual vehicle for complete accuracy. Availability and delivery times for particular models or equipment may vary. Specifications, options and accessories may differ in Hawaii, U.S. territories and other countries. For additional information on availability, options or accessories, see your Nissan dealer or contact Nissan North America, Inc.

DIMENSIONS/CAPACITIES/WEIGHTS/MPG

Dimensions

Exterior – Inches	
Wheelbase	106.3
Overall length	178.7
Overall width (without mirrors)	72.8
Overall height	74.9
Track width	61.8

Vehicle Clearance – 4x2/4x4	X	S	PRO-4X
Ground clearance	8.2"/9.1"	8.2"/9.1"	-/9.5"
Angle of approach	30.5°/32.0°	30.5°/32.0°	-/33.2°
Angle of departure	27.5°/28.8°	27.5°/28.8°	-/29.4°
Break-over angle	22.9°/24.6°	22.9°/24.6°	-/23.8°

Interior – Inches (front/2nd-row)	
Head room	39.9/39.3
Leg room	42.4/34.4
Hip room	55.9/46.1
Shoulder room	58.3/58.3

Capacities

Seating capacity	5
EPA interior passenger volume (cu. ft.)	99.8
Cargo capacity (cu. ft.)	
— All seats in user positions	36.3
— Second row folded flat	65.7
Fuel tank (gals.)	21.1
Maximum towing capacity (lbs.)	5,000

Curb Weights – Lbs.

Base Total	X	S	PRO-4X
4x2			
Automatic transmission	4,148	4,140	–
Manual transmission	–	–	–
4x4			
Automatic transmission	4,359	4,353	4,425
Manual transmission	–	4,357	4,408

2013 EPA Fuel Economy Estimates

City/Hwy MPG	X	S	PRO-4X
4x2			
Automatic transmission	16/22	16/22	–
Manual transmission	–	–	–
4x4			
Automatic transmission	15/20	15/20	15/20
Manual transmission	–	16/20	16/20

— Actual mileage may vary with driving conditions – use for comparison only.



Buying and owning a Nissan is like driving one: quick, convenient, confidence-inspiring.

Nissan Motor Acceptance Corporation. Whether you're buying or leasing, you'll find attractive rates and flexible terms to make your purchase more accessible.

New Vehicle Limited Warranties. Protection for your new Nissan includes 3-year/36,000-mile basic coverage and 5-year/60,000-mile powertrain coverage. Terms, conditions and exclusions apply. See Warranty Information Booklet for complete details.

Security+Plus.* For additional peace of mind, a variety of extended service plans lets you tailor the coverage to your driving habits.

Maintenance+Plus.* This extended plan ensures your Nissan will receive up to 17 different services and over 33 different inspection items at each visit, using the most up-to-date diagnostic equipment available.

Genuine Nissan Parts. When it comes time for service, any necessary replacement parts will be made using Genuine Nissan new or remanufactured parts, or Nissan-approved parts. And they're the only parts to carry Nissan's factory-backed limited warranty.

Nissan's philosophy toward the environment, "Seeking a symbiosis of people, vehicles and nature," describes our ideal for a sustainable mobile society, now and in the future. We launched the Nissan Green Program with specific objectives to realize this goal, and we are pursuing it energetically. For more information, log on to NissanUSA.com/green



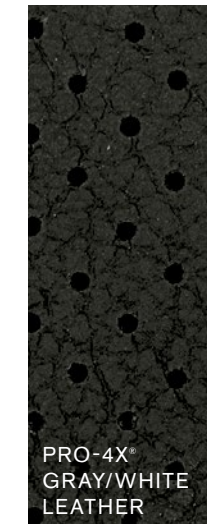
FABRIC SELECTIONS



X/S
GRAY
CLOTH



PRO-4X®
GRAY/STEEL
CLOTH



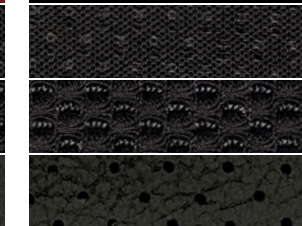
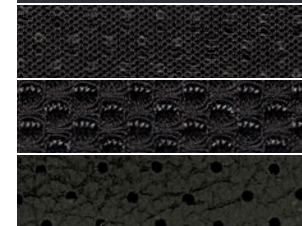
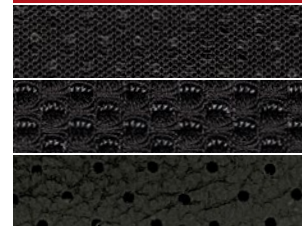
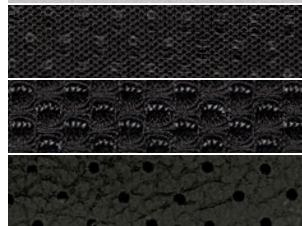
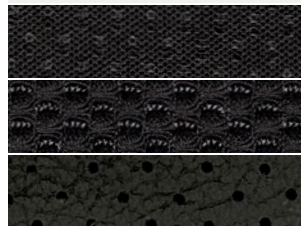
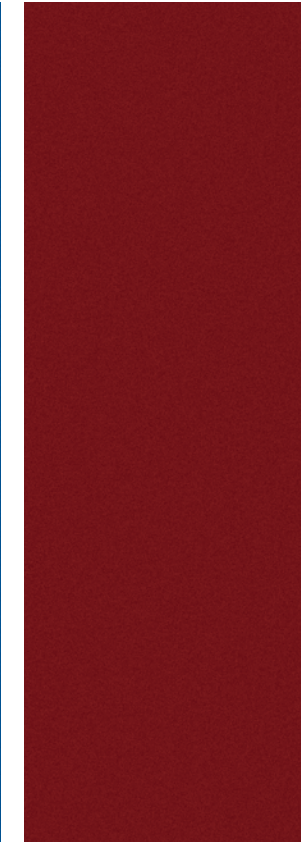
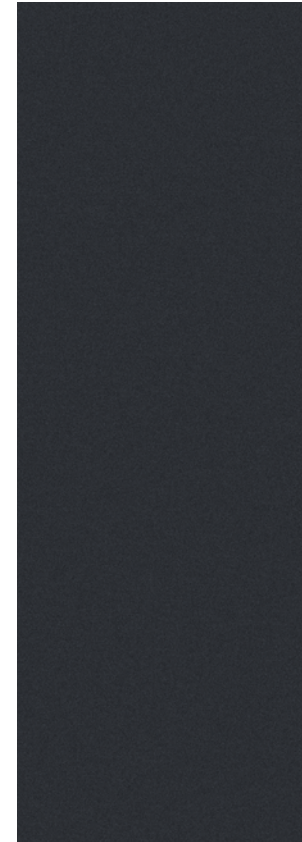
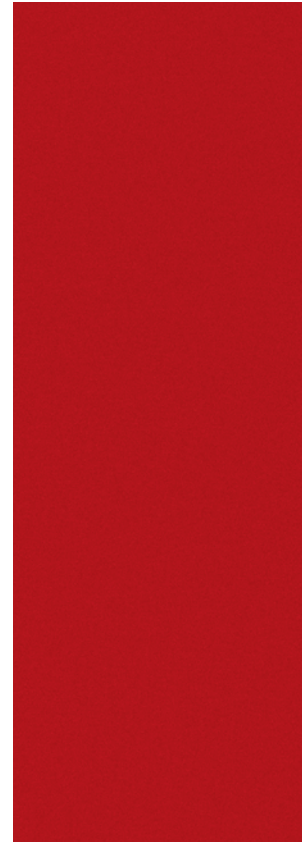
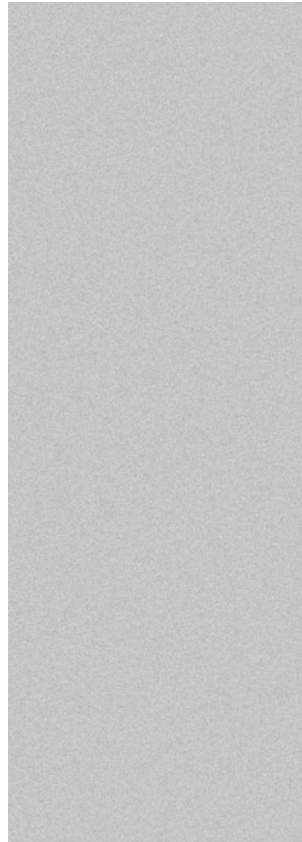
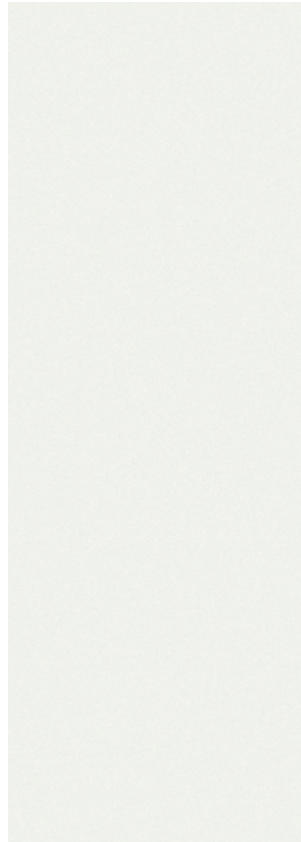
PRO-4X®
GRAY/WHITE
LEATHER



PAINT SELECTIONS

COLOR YOUR WORLD.

You've decided which Xterra you want, now here comes the best part: deciding what it's going to look like. Select your favorite color and then pick from the available interiors based on the model of your choice.



Glacier White QAK

Brilliant Silver K23

Lava Red EAF

Night Armor K26

Metallic Blue B17

Cayenne Red NAH

Super Black KH3

- Standard
- Part of Leather Package

Nissan has taken care to ensure that the color swatches presented here are the closest possible representations of actual vehicle colors. Swatches may vary slightly due to the printing process and whether viewed in daylight, fluorescent or incandescent light. Please see the actual colors at your local Nissan dealer.

	X	S	PRO-4X
X/S GRAY CLOTH	<input type="checkbox"/>	<input type="checkbox"/>	<input type="checkbox"/>
PRO-4X GRAY/STEEL CLOTH			<input type="checkbox"/>
PRO-4X GRAY/WHITE LEATHER			<input type="checkbox"/>

	X	S	PRO-4X
X/S GRAY CLOTH	<input type="checkbox"/>	<input type="checkbox"/>	<input type="checkbox"/>
PRO-4X GRAY/STEEL CLOTH			<input type="checkbox"/>
PRO-4X GRAY/WHITE LEATHER			<input type="checkbox"/>

	X	S	PRO-4X
X/S GRAY CLOTH	<input type="checkbox"/>	<input type="checkbox"/>	<input type="checkbox"/>
PRO-4X GRAY/STEEL CLOTH			<input type="checkbox"/>
PRO-4X GRAY/WHITE LEATHER			<input type="checkbox"/>

	X	S	PRO-4X
X/S GRAY CLOTH	<input type="checkbox"/>	<input type="checkbox"/>	<input type="checkbox"/>
PRO-4X GRAY/STEEL CLOTH			<input type="checkbox"/>
PRO-4X GRAY/WHITE LEATHER			<input type="checkbox"/>

	X	S	PRO-4X
X/S GRAY CLOTH	<input type="checkbox"/>	<input type="checkbox"/>	<input type="checkbox"/>
PRO-4X GRAY/STEEL CLOTH			<input type="checkbox"/>
PRO-4X GRAY/WHITE LEATHER			<input type="checkbox"/>

	X	S	PRO-4X
X/S GRAY CLOTH	<input type="checkbox"/>	<input type="checkbox"/>	<input type="checkbox"/>
PRO-4X GRAY/STEEL CLOTH			<input type="checkbox"/>
PRO-4X GRAY/WHITE LEATHER			<input type="checkbox"/>

	X	S	PRO-4X
X/S GRAY CLOTH	<input type="checkbox"/>	<input type="checkbox"/>	<input type="checkbox"/>
PRO-4X GRAY/STEEL CLOTH			<input type="checkbox"/>
PRO-4X GRAY/WHITE LEATHER			<input type="checkbox"/>

Nissan. Innovation that excites.™

NISSAN XTERRA®

Shouldn't you drive something you love? Absolutely. And that's what inspires our innovation. We look at every part of your drive and ask how can we make this better, smarter and more fun. So when you get in your new Xterra, you'll feel how exciting the answers can be:

Rack it. Not just a roof rack, an icon. With an available ventilated gear box, you can dry out wet gear on the roll, while available integrated off-road lights show the way home.

Lock it. With floor rails, heavy-duty sliding cleats and ten cargo hooks, Xterra's innovative Utili-track® cargo-carrying system puts your gear in lockdown.¹

Grade it. Whether it's steep or deep, with the PRO-4X® model you've got serious off-road equipment, including hill descent control and hill start assist.²

Tame it. Underneath Xterra's rugged good looks is a solid core featuring a fully boxed, full-length ladder frame. That's full-size strength on a mid-size SUV.

Los folletos de Nissan también están disponibles en español. Para descargar el PDF, visita:
NissanUSA.com/folletos-espanol

And follow Nissan on:



visit NissanUSA.com/xterra

¹Cargo and load capacity limited by weight and distribution. Always secure all cargo. Heavy loading of the SUV with cargo, especially on the roof, will affect the handling and stability of the vehicle. ²PRO-4X models with automatic transmission only. Facebook® is a registered trademark of Facebook, Inc. Twitter® is a registered trademark of Twitter, Inc. YouTube® is a registered trademark of Google Inc.