

SIMPLY CLEVER

ŠKODA



The ŠKODA Roomster



Effective: January 2015

Welcome to the Roomster

Ground breaking practicality and comfort form the basis of this forward-thinking MPV which really did break the mould. Why not take a minute to understand exactly how the Roomster can fit into your life?

Space. The Roomster's boot can hold 480 litres with the rear seats up. That's an impressive amount of space for a small MPV, but not as impressive as the 1,810 litres of space you get when you remove the 'Varioflex' seats altogether. And with other intelligent storage solutions such as the double glovebox and the 1.5 litre bottle holder, in Roomster, all the space is maximised.

Varioflex seating. Offering over 20 different seat configurations, the 'Varioflex' system ensures you can arrange the 'Living Room' to suit your needs. Taking the kids on a day trip? Leave the seats in. Only got two kids? Take the centre seat out. Need to take the rubbish to the dump? Take all the seats out so you can do it in one go. Going cycling? Take one seat out to make some room... we could go on and on!

Modular Design: The Driving Room. The design of the Roomster provides two distinct areas; the 'Driving Room' and the 'Living Room'. Each area has been designed to make sure you are comfortable and enjoy the ride. Unlike other MPVs, the position of the seats and the steering wheel has been designed to make you feel like you are driving a conventional hatchback, so you won't have to compromise on your driving fun!

Modular Design: The Living Room. The 'Living Room' offers its passengers a large, comfortable, airy, light and flexible space. The rear seats are slightly higher than the front and together with the deeper rear windows offer a great view. And of course, there's also the huge flexibility given by the 'Varioflex' seating.

ŠKODA Assistance. Every ŠKODA is covered by ŠKODA Roadside Assistance. So if you break down, even if you're on holiday or on business in Europe, you can use the freephone number to call someone to come and help you. Best of all it's completely free for 3 years.

Roomster Scout. Fancy something a little different? The Scout offers the Roomster in a more rugged, adventurous skin. With Scout floor mats, Scout upholstery and Scout body mouldings, all the practicality of the Roomster has been packaged into a more robust, stylised look. And with great specification, the Scout gives both comfort and style to go with its practicality.

So you've read a little about some of the Roomster's features, but what else do you need to know about the Roomster?

The Roomster has been refreshed, giving the car a more dynamic appearance. The main changes are at the front. A redesigned, wider front grille and newly designed headlights optically widen the Roomster, strengthening the horizontal lines and increasing its road presence. The sculpted bonnet and wraparound windscreen with black A pillars and 'floating' roof remain, making for a car that retains an air of style, elegance and contemporary design.

The modern exterior is matched by the updated interior. Newly designed stereos, steering wheels and upholsteries improve the feeling of style and quality of Roomster - soft touch surfaces and ergonomically laid out controls make the car a joy to drive. With outstanding boot space, headroom and legroom, not to mention lots of room for luggage, driver and passengers can travel in comfort.

The biggest change for Roomster was under the bonnet. Cleaner and more efficient petrol and diesel engines offer the driver a suitable engine for every situation. TSI petrol engines offer a great blend of power and torque combined with low CO₂ and improved fuel economy, whilst the range of 'Common Rail' diesel engines emit just 124g/km of CO₂, helping to reduce the impact on the environment.

The Roomster GreenLine II is fitted with technological advancements such as a Stop/start system, gear change recommendation, and energy recovery, improving economy and lowering CO₂ emissions even further. These advancements mean the Roomster GreenLine II emits just 109 g/km CO₂, with a combined fuel economy of 67.3 mpg making it the most economical Roomster ever!

So now the introduction to the refreshed Roomster is over, why not take a look at the Roomster in a little more detail?



The ŠKODA Roomster S

	CO ₂ (g/km)	VED Band**	Insurance Group (50)	Recommended Basic	VAT	RRP	Recommended OTR*	Business user information	
								BiK 2014/15	P11D Value
1.2 69PS 5spd	143	F	5E	£9,495.83	£1,899.17	£11,395.00	£12,105.00	21%	£11,905.00
1.2 TSI 86PS 5spd	134	E	9E	£10,045.83	£2,009.17	£12,055.00	£12,750.00	19%	£12,565.00
1.2 TSI 105PS 7spd DSG	134	E	12E	£11,241.67	£2,248.33	£13,490.00	£14,185.00	19%	£14,000.00

Standard Equipment

15" Satellite steel wheel covers (195/55 R15 85H)	Category 1 electronic alarm and immobiliser with backup horn and towing protection	Electric front windows	Height and reach adjustable 3 spoke steering wheel	Rear fog light
12V socket in boot	Central door locking	ESC Inc. ABS, ASR, EDL, HBA	Hill hold control (1.2 TSI DSG only)	Rear headrests (x2)
2 DIN radio Swing with single CD player (can play MP3 recordings)	Curtain airbags	Exterior temperature gauge	Interior rear view mirror with dimming facility	Rear wiper with intermittent control
3 point seat belts in the rear	Delayed interior lighting	Folding grab handles in the roof frame	ISOFIX for child seats in rear	Roof aerial with second antenna in windscreen for FM2 signal
3.5mm aux. socket (for MP3 players)	Driver and passenger front and side airbags	Gear change recommendation	Load securing loops in luggage space	Ticket holder
4 speakers	Driver and passenger seat belt warning light	Halogen headlights	Manually adjustable door mirrors	Tinted glass
ABS (Anti-lock braking system)	Driver and passenger vanity mirror	Headlight range adjustment	Middle console with 12V outlet, cup holder and storage box	Tyre pressure monitor
Black door mirrors and door handles	Driver door mirror (aspherical) providing an increased field of view	Heated rear glass	Parcel shelf (dual position)	Tyre repair kit (no spare wheel) †
Body coloured bumpers		Height adjustable driver seat	Pollen filter	Varioflex seating
		Height adjustable front head restraints	Power steering	Windscreen wiper with intermittent control (4 speed)

For offers visit skoda.co.uk/offers

† Temporary spare wheel or temporary 'Space saver' spare wheel can be ordered as an option. If added the tyre repair kit will be removed. For further details please check page 12.



Band	CO ₂ (g/km)	First 12 Months ¹	Standard VED ²	OTR (Recommended On The Road) Recommended 'On the Road' prices include delivery, 12 months Road Fund Licence, DVLA First registration Fee (at £55), and apply to the United Kingdom only.	¹ First year vehicle licence rates for petrol and diesel cars purchased on or after 1st April 2014. First year rate or 'showroom tax' applies to new car purchases only.	Company car tax is based on your cars carbon dioxide emissions. The higher the car's emissions, the higher its tax liability. When a company car is made available for private use a 'Benefit in Kind' value is calculated for tax purposes.	P11D (Expenses and Benefits) The P11D value is calculated by taking the On The Road (OTR) price for the vehicle, less the Road Fund Licence (RFL) and First Registration Fee (FRF).
A	Up to 100	£0	£0				
B	101 - 110	£0	£20				
C	111 - 120	£0	£30				
D	121 - 130	£0	£110				
E	131 - 140	£130	£130				
F	141 - 150	£145	£145				
G	151 - 165	£180	£180				
H	166 - 175	£290	£205				
I	176 - 185	£345	£225				
J	186 - 200	£485	£265				
K	201 - 225	£635	£285				
L	226 - 255	£860	£485				
M	Over 255	£1,090	£500				

VED (Vehicle Excise Duty)
All vehicles will be subject to Vehicle Excise Duty based on the fuel type of the vehicle and its carbon dioxide (CO₂) emissions level, measured in grams per kilometre (g/km). Due to changes in vehicle emissions data, CO₂ figures may differ on these vehicles if taken from current ŠKODA UK stock. The VED bands are shown in the table opposite.

² Rate reverts to the Government's applicable Standard VED rate in subsequent years.

Edition: UK 1st April 2014. VAT is calculated at 20%. Please confirm figures with your ŠKODA Retailer.

To help you work out your tax liability please refer to page 22.

BIK (Benefit in Kind)
The BIK percentage value is based on the CO₂ emissions of the vehicle for the current tax year 2014/2015.

ŠKODA GreenLine II Technology

A combination of innovative technology and practical design features ensure that the Roomster GreenLine II is highly efficient and environmentally friendly. Below is an explanation of the technology present in the Roomster GreenLine II and how it works to keep fuel costs down and environmental impact low.



Roomster GreenLine comes with a **1.2 TDI CR 75PS DPF** engine. The economical three cylinder 1.2 TDI diesel engine in the GreenLine II produces just 109 g/km CO₂ which means the first 12 months road tax is totally free!

The Roomster GreenLine II has a combined fuel economy of 67.3 mpg, making the Roomster GreenLine II the most frugal Roomster ever made!

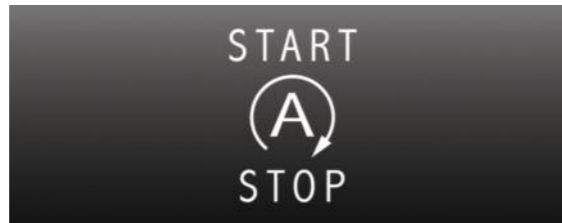


Low rolling resistance tyres. The Roomster GreenLine II has 15" Rotare alloys (6J x 15" 185/60 R15 84H) these lighter alloy wheels with low rolling resistance tyres have a higher prescribed air pressure to reduce friction.



Energy Recovery. Energy recovery is the process of converting kinetic energy (energy created through movement) back into usable electricity, which is either stored in the battery, or immediately used again by electrical components on the vehicle.

Depending on driving style, electrical energy is supplied to the vehicle by the alternator or directly by the battery. The principle of energy recovery is to reduce the load on the engine and therefore contribute to lower emissions and reduced fuel consumption.



Stop/start System. This innovative system turns off the engine when it is not needed, for example when the driver is stopped at traffic lights or in heavy traffic.

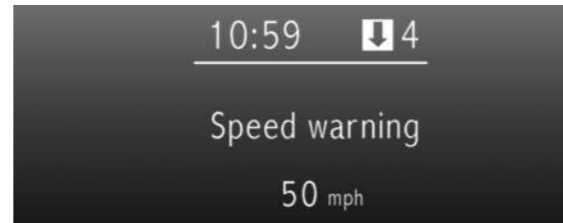
When a normal car is stationary, the engine will idle, which in turn consumes fuel and generates emissions. The Stop/start system cleverly cuts out this unnecessary work by stopping the engine automatically when the car is stationary, in neutral and the clutch pedal is released.

The Stop/start system does not inhibit a quick getaway either. As soon as the driver presses the clutch to put the vehicle in gear, the engine immediately starts up so acceleration is as instant as if the car had been idling.



Aerodynamics. One of the simplest ways to improve fuel efficiency and reduce emissions, is to create a more aero-dynamic vehicle.

To keep the weight and drag of the GreenLine II models down to a minimum and thus ensure the model is as efficient as possible, there is a reduced list of options available. However, the comfort and safety of all occupants has not been compromised and so important features like airbags and air conditioning have been retained.



Gear recommendations. The recommended gear feature on the trip computer or Maxi-dot display shows the driver whether the gear they are in is appropriate or whether they need to change up or down.

The aim is to help the driver achieve optimum engine speed and reduce fuel consumption.



The ŠKODA Roomster GreenLine II

	CO ₂ (g/km)	VED Band**	Insurance Group (50)	Recommended Basic	VAT	RRP	Recommended OTR*	Business user information	
								BiK 2014/15	P11D Value
1.2 TDI CR 75PS DPF 5spd	109	B	9E	£13,133.33	£2,626.67	£15,760.00	£16,325.00	14%	£16,270.00

Standard Equipment

15" Rotare alloys (6J x 15" 185/60 R15 84H)
12V socket in boot
3.5mm aux socket (for MP3 players etc)
3 spoke steering wheel (plastic)
8 speakers
Black protective side mouldings
Body coloured bumpers
Body coloured door mirrors and handles
Chrome surround on radiator grille
Cruise control

Curtain airbags
Delayed interior lighting
Driver and passenger front and side airbags
Driver and passenger seat-belt warning light
Driver door mirror (aspherical) providing an increased field of view
Energy recovery
Electrically adjustable and heated door mirrors
Floor mats
Front electric windows

Front fog lights
Gear change recommendation
Glovebox cover (Illuminated)
Halogen projector lights with DE module
Headlight range adjustment
Height adjustable driver and passenger seat
Hill hold control
ISOFIX for child seats in rear door mirrors
Load securing loops in luggage space
Manually controlled air conditioning
Plastic gearknob and handbrake lever

Radio Swing with single CD (can play MP3 recordings)
Rear disc brakes
Remote central locking
Stop/start
Trip computer with gear change recommendation
Tyre Pressure Monitor
Tyre repair kit
Varioflex seating
Windscreen wiper with intermittent control (4 speeds)

For offers visit skoda.co.uk/offers

Band	CO ₂ (g/km)	First 12 Months ¹	Standard VED ²
A	Up to 100	£0	£0
B	101 - 110	£0	£20
C	111 - 120	£0	£30
D	121 - 130	£0	£110
E	131 - 140	£130	£130
F	141 - 150	£145	£145
G	151 - 165	£180	£180
H	166 - 175	£290	£205
I	176 - 185	£345	£225
J	186 - 200	£485	£265
K	201 - 225	£635	£285
L	226 - 255	£860	£485
M	Over 255	£1,090	£500

OTR (Recommended On The Road)
Recommended 'On the Road' prices include delivery, 12 months Road Fund Licence, DVLA First registration Fee (at £55), and apply to the United Kingdom only.

VED (Vehicle Excise Duty)
All vehicles will be subject to Vehicle Excise Duty based on the fuel type of the vehicle and its carbon dioxide (CO₂) emissions level, measured in grams per kilometre (g/km). Due to changes in vehicle emissions data, CO₂ figures may differ on these vehicles if taken from current ŠKODA UK stock. The VED bands are shown in the table opposite.

¹ First year vehicle licence rates for petrol and diesel cars purchased on or after 1st April 2014. First year rate or 'showroom tax' applies to new car purchases only.

² Rate reverts to the Government's applicable Standard VED rate in subsequent years.

Edition:UK 1st April 2014. VAT is calculated at 20%. Please confirm figures with your ŠKODA Retailer.

Company car tax is based on your cars carbon dioxide emissions. The higher the car's emissions, the higher its tax liability. When a company car is made available for private use a 'Benefit in Kind' value is calculated for tax purposes.

To help you work out your tax liability please refer to page 22.

P11D (Expenses and Benefits)

The P11D value is calculated by taking the On The Road (OTR) price for the vehicle, less the Road Fund Licence (RFL) and First Registration Fee (FRF).

BiK (Benefit in Kind)
The BiK percentage value is based on the CO₂ emissions of the vehicle for the current tax year 2014/2015.

The ŠKODA Roomster SE

	CO ₂ (g/km)	VED Band**	Insurance Group (50)	Recommended Basic	VAT	RRP	Recommended OTR*	Business user information	
								BiK 2014/15	P11D Value
1.2 12V 69PS 5spd	143	F	6E	£10,720.83	£2,144.17	£12,865.00	£13,575.00	21%	£13,375.00
1.2 TSI 86PS 5spd	134	E	9E	£11,200.00	£2,240.00	£13,440.00	£14,135.00	19%	£13,950.00
1.2 TSI 105PS 5spd	134	E	12E	£11,754.17	£2,350.83	£14,105.00	£14,800.00	19%	£14,615.00
1.2 TSI 105PS 7spd DSG	134	E	12E	£12,395.83	£2,479.17	£14,875.00	£15,570.00	19%	£15,385.00
1.6 TDI CR 90PS 5spd DPF	124	D	11E	£12,375.00	£2,475.00	£14,850.00	£15,415.00	17%	£15,360.00
1.6 TDI CR 105PS 5spd DPF	124	D	13E	£12,562.50	£2,512.50	£15,075.00	£15,640.00	17%	£15,585.00

Standard Equipment (over S)

15" Avior alloys (195/55 R15 85H) incl. anti-theft locking wheel bolts	Height adjustable passenger seat
3 spoke steering wheel with chrome detail	Illuminated glovebox with covers
Acoustic rear parking sensors	Manual air conditioning
Additional 4 speakers	Metallic paint
Body coloured door mirrors and handles	Middle rear seat with armrest and cupholders (when folded)
Chrome surround on radiator grille	Panoramic sunroof
Electric rear windows	Remote central locking
Electrically adjustable and heated door mirrors	Storage tray under passenger seat
Floor mats (x4)	Storage tray in boot
Glovebox cover	Sunset glass (from the B-pillar back)
Halogen projector lights with DE module	Trip computer

For offers visit skoda.co.uk/offers

Band	CO ₂ (g/km)	First 12 Months ¹	Standard VED ²
A	Up to 100	£0	£0
B	101 - 110	£0	£20
C	111 - 120	£0	£30
D	121 - 130	£0	£110
E	131 - 140	£130	£130
F	141 - 150	£145	£145
G	151 - 165	£180	£180
H	166 - 175	£290	£205
I	176 - 185	£345	£225
J	186 - 200	£485	£265
K	201 - 225	£635	£285
L	226 - 255	£860	£485
M	Over 255	£1,090	£500

OTR (Recommended On The Road)
Recommended 'On the Road' prices include delivery, 12 months Road Fund Licence, DVLA First registration Fee (at £55), and apply to the United Kingdom only.

VED (Vehicle Excise Duty)
All vehicles will be subject to Vehicle Excise Duty based on the fuel type of the vehicle and its carbon dioxide (CO₂) emissions level, measured in grams per kilometre (g/km). Due to changes in vehicle emissions data, CO₂ figures may differ on these vehicles if taken from current ŠKODA UK stock. The VED bands are shown in the table opposite.

¹ First year vehicle licence rates for petrol and diesel cars purchased on or after 1st April 2014. First year rate or 'showroom tax' applies to new car purchases only.

² Rate reverts to the Government's applicable Standard VED rate in subsequent years.

Edition:UK 1st April 2014. VAT is calculated at 20%. Please confirm figures with your ŠKODA Retailer.

Company car tax is based on your cars carbon dioxide emissions. The higher the car's emissions, the higher its tax liability. When a company car is made available for private use a 'Benefit in Kind' value is calculated for tax purposes.

To help you work out your tax liability please refer to page 22.

P11D (Expenses and Benefits)

The P11D value is calculated by taking the On The Road (OTR) price for the vehicle, less the Road Fund Licence (RFL) and First Registration Fee (FRF).

BiK (Benefit in Kind)
The BiK percentage value is based on the CO₂ emissions of the vehicle for the current tax year 2014/2015.



Please note: model shown with optional equipment and accessories.

The ŠKODA Roomster Scout

	CO ₂ (g/km)	VED Band**	Insurance Group (50)	Recommended Basic	VAT	RRP	Recommended OTR*	Business user information BiK 2014/15	P11D Value
1.2 TSI 86PS 5spd	134	E	9E	£11,658.33	£2,331.67	£13,990.00	£14,685.00	19%	£14,500.00
1.2 TSI 105PS 5spd	134	E	12E	£12,212.50	£2,442.50	£14,655.00	£15,350.00	19%	£15,165.00
1.2 TSI 105PS 7spd DSG	134	E	12E	£12,945.83	£2,589.17	£15,535.00	£16,230.00	19%	£16,045.00
1.6 TDI CR 90PS 5spd DPF	124	D	11E	£12,833.33	£2,566.67	£15,400.00	£15,965.00	17%	£15,910.00
1.6 TDI CR 105PS 5spd DPF	124	D	13E	£13,020.83	£2,604.17	£15,625.00	£16,190.00	17%	£16,135.00

Standard Equipment (over S)

16" Scout alloys incl. (205/45 R16 87W) incl. anti-theft locking wheel bolts
3 spoke leather steering wheel, leather gearknob, handbrake & gaiter
Additional 4 speakers
Black roof rails
Body coloured door mirrors and handles
Chrome surround on radiator grille
Electrically adjustable and heated door mirrors
Front fog lights

Halogen projector lights with DE module
Height adjustable passenger seat
Illuminated glovebox with covers
Manual air conditioning
Middle rear seat with armrest and cupholders (when folded)
Rear disc brakes
Remote central locking
Scout textile floor mats
Scout styled body mouldings

Scout upholstery
Storage tray under passenger seat
Stainless steel pedal set
Storage tray in boot
Sunset glass (from the B-pillar back)
Tyre Pressure Monitor (TPM)
Trip computer



For offers visit skoda.co.uk/offers

Band	CO ₂ (g/km)	First 12 Months ¹	Standard VED ²
A	Up to 100	£0	£0
B	101 - 110	£0	£20
C	111 - 120	£0	£30
D	121 - 130	£0	£110
E	131 - 140	£130	£130
F	141 - 150	£145	£145
G	151 - 165	£180	£180
H	166 - 175	£290	£205
I	176 - 185	£345	£225
J	186 - 200	£485	£265
K	201 - 225	£635	£285
L	226 - 255	£860	£485
M	Over 255	£1,090	£500

OTR (Recommended On The Road)
Recommended 'On the Road' prices include delivery, 12 months Road Fund Licence, DVLA First registration Fee (at £55), and apply to the United Kingdom only.

VED (Vehicle Excise Duty)
All vehicles will be subject to Vehicle Excise Duty based on the fuel type of the vehicle and its carbon dioxide (CO₂) emissions level, measured in grams per kilometre (g/km). Due to changes in vehicle emissions data, CO₂ figures may differ on these vehicles if taken from current ŠKODA UK stock. The VED bands are shown in the table opposite.

¹ First year vehicle licence rates for petrol and diesel cars purchased on or after 1st April 2014. First year rate or 'showroom tax' applies to new car purchases only.

² Rate reverts to the Government's applicable Standard VED rate in subsequent years.

Edition: UK 1st April 2014. VAT is calculated at 20%. Please confirm figures with your ŠKODA Retailer.

Company car tax is based on your car's carbon dioxide emissions. The higher the car's emissions, the higher its tax liability. When a company car is made available for private use a 'Benefit in Kind' value is calculated for tax purposes.

To help you work out your tax liability please refer to page 22.

P11D (Expenses and Benefits)

The P11D value is calculated by taking the On The Road (OTR) price for the vehicle, less the Road Fund Licence (RFL) and First Registration Fee (FRF).

BiK (Benefit in Kind)
The BiK percentage value is based on the CO₂ emissions of the vehicle for the current tax year 2014/2015.

ŠKODA Roomster 'Varioflex' seating

The Roomster has been designed with both the driver and passengers in mind. The interior is split between the 'Driving Room' and the 'Living Room'. The 'Living Room' is characterised by the revolutionary 'Varioflex' seating system.



The 'Varioflex' seating provides a flexible and functional array of seat positions. The outer seats are able to slide backwards and forwards and recline, whilst the middle seat folds down to create an additional armrest and convenient table and drinks holders (table and drinks holders standard on SE and Scout).

The 'Varioflex' seating has over 20 different seat combinations. All seats can individually be folded down, lifted up and secured behind the front seats or removed completely. The centre seat can be removed and the two outer seats pushed inwards to create a more spacious two seat 'Living Room'.

All 3 seats can be removed quickly and easily to create an enormous flat loadspace with a volume of 1,810 litres.*

*1,810 litres represents a space large enough to hold a small flock of sheep, goats or one concrete block from the Hoover dam! (Source - AQA)

Please note: car shown with wheels not available in the UK.



Factory Fitted Optional Equipment

Option	S		GreenLine II		SE		Scout	
	Basic	RRP	Basic	RRP	Basic	RRP	Basic	RRP
Interior								
Bicycle holder in luggage compartment	£158.33	£190	-	-	£158.33	£190	£158.33	£190
Lower glovebox cover	£45.83	£55	std	std	std	std	std	std
Storage tray under passenger seat	-	-	-	-	std	std	std	std
Temporary spare steel wheel / Space saver steel wheel*	£62.50	£75	-	-	£62.50	£75	£62.50	£75
Textile floor mats	£45.83	£55	std	std	std	std	std	std
Third rear headrest	£54.17	£65	£54.17	£65	£54.17	£65	£54.17	£65
Paint								
Solid colour Pacific Blue	FOC	FOC	FOC	FOC	FOC	FOC	FOC	FOC
Special colour Candy White/Corrida red	£145.83	£175	£145.83	£175	std	std	£145.83	£175
Metallic and pearl effect colours	-	£445.83	£445.83	£535	std	std	£445.83	£535
Black roof	-	-	-	-	£312.50	£375	-	-
Exterior								
16" Noid alloys (6.5J x 16" 205/45 R16 83W)	-	-	-	-	£183.33	£220	-	-
17" Kentaur alloys (7J x 17 205/40 R17 84W)	-	-	-	-	-	-	£279.17	£335
Black protective side moulding	£45.83	£55	£45.83	£55	£45.83	£55	-	-
Black roof rails	£250.00	£300	£250.00	£300	£250.00	£300	std	std
Panoramic sunroof	£504.17	£605	-	-	std	std	£504.17	£605
Silver roof rails	£312.50	£375	£312.50	£375	£312.50	£375	£125.00	£150
Sunset glass (from B-pillar back)	£191.67	£230	£191.67	£230	std	std	std	std
Steering wheels & Bluetooth®								
3 spoke leather steering wheel with small leather package ††	£216.67	£260	£216.67	£260	£216.67	£260	-	-
3 spoke MFSW for radio and small leather pack ††	-	-	£250.00	£300	£250.00	£300	-	-
3 spoke MFSW for radio and telephone with small leather pack♦††	-	-	£266.67	£320	£266.67	£320	£145.83	£175
Telephone preparation GSM II with Bluetooth® and Maxi Dot †††	-	-	£291.67	£350	£291.67	£350	£291.67	£350
Safety & Security								
Cornering front fog lights	-	-	-	-	£208.33	£250	-	-
Curve projector headlights incl. cornering front fog lights	-	-	£408.33	£490	£408.33	£490	-	-
Hill hold control (non DSG engines)	£41.67	£50	£41.67	£50	£41.67	£50	£41.67	£50
Front fog lights	£208.33	£250	std	std	£208.33	£250	std	std
Switch-off function for passenger airbag	£66.67	£80	£66.67	£80	£66.67	£80	£66.67	£80

Note: MFSW - Multi function steering Wheel

- Unavailable on this trim

std Standard equipment on this trim

* Dependant on trim and optional wheel fitted. Please consult your Retailer for details, please note that this replaces the standard tyre repair kit

** Factory fit tow bar will only support lights required for towing (ie brake, hazard and indicator). Caravan customers who need twin electrics (also known as split charging) should order the Retailer fit accessories Tow Bar and electrics

◊ For terms and conditions please see page 23

† Requires Bluetooth®

† Replaces front fog lights.

†† Small leather package (steering wheel and hand brake in leather, gearknob and gaiter in leatherette)

††† Must be ordered in conjunction with a three spoke leather steering wheel or MFSW

Factory Fitted Optional Equipment (continued)

Option	S		GreenLine II		SE		Scout	
	Basic	RRP	Basic	RRP	Basic	RRP	Basic	RRP
Comfort & Convenience								
Acoustic rear parking sensors	-	-	-	-	std	std	£237.50	£285
Amundsen satellite navigation system with DAB radio (inc. Western Europe Maps)	-	-	£541.67	£650	£541.67	£650	£541.67	£650
Climate control air conditioning	-	-	£333.33	£400	£333.33	£400	£333.33	£400
Cruise control	£250.00	£300	std	std	£250.00	£300	£250.00	£300
DAB digital radio	£79.17	£95	£79.17	£95	£79.17	£95	£79.17	£95
Daytime running LED lights †	-	-	-	-	-	-	£87.50	£105
Electric rear windows	-	-	£137.50	£165	std	std	£137.50	£165
Front armrest	-	-	-	-	£83.33	£100	£83.33	£100
Heated front seats	£208.33	£250	£208.33	£250	£208.33	£250	£208.33	£250
Manual air conditioning	£500.00	£600	std	std	std	std	std	std
Maxi-dot	-	-	£137.50	£165	£137.50	£165	£137.50	£165
MDI (Multi device Interface)	-	-	£150.00	£180	£150.00	£180	£150.00	£180
Partial leather upholstery (cloth, leather and artificial leather) †††	-	-	-	-	£520.83	£625	£520.83	£625
Towing								
Tow bar, removable and lockable**	£337.50	£405	-	-	£337.50	£405	£337.50	£405
Tow bar preparation**	£100.00	£120	-	-	£100.00	£120	£100.00	£120
Extended warranty								
4 years / 80,000 miles ◊	£141.67	£170	£141.67	£170	£141.67	£170	£141.67	£170
5 years / 100,000 miles ◊	£254.17	£305	£254.17	£305	£254.17	£305	£254.17	£305
Service Plan Total 3 years or 30,000 miles ◊	£399.17	£479	£399.17	£479	£399.17	£479	£399.17	£479



Black roof available on SE models (selected colours only see page 14 for details)



Cruise control



MDI (Mobile Device Interface)

The ŠKODA Roomster colours

Black roof available*



Candy White (special colour)



Corrida Red (special colour)



Black Magic pearl effect



Jungle Green Metallic



Pacific Blue (solid colour)



Shark Blue metallic**



Cappuccino metallic



Rosso Brunello metallic



Miami Blue metallic



Regency Green metallic**



Muscovado metallic



Metal Grey metallic



Moon White metallic



Brilliant Silver metallic

Please note: car shown with wheels not available in the UK.

* Black roof available on SE models ** Stock vehicles only please consult your retailer

Because of errors which may occur in the print, the colours illustrated here may differ from the actual finishes themselves. Your ŠKODA retailer will be pleased to advise you.

Standard roof only

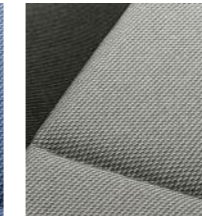
The ŠKODA Roomster trims & wheels

S

Standard



Stone Blue upholstery & Onyx dash or Stone Blue upholstery & Silver dash



Stone Grey upholstery & Onyx dash or Stone Grey upholstery & Silver dash



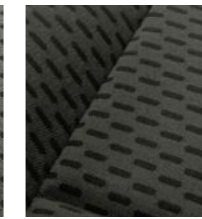
15" Satellite Steel wheel covers

GreenLine II

Standard



Domino Grey upholstery & Onyx dash or Domino Grey upholstery & Silver dash



Domino Black upholstery & Onyx dash or Domino Black upholstery & Silver dash



15" Rotare alloys

Scout

Standard



Scout Onyx cloth upholstery & Onyx or Silver dash



16" Scout alloys



17" Kentaur alloys



Partial leather upholstery with Onyx dash or Silver dash

SE

Standard



Domino Grey upholstery & Onyx dash or Domino Grey upholstery & Silver dash



Domino Black upholstery & Onyx dash or Domino Black upholstery & Silver dash



15" Avior alloys



16" Noid alloys

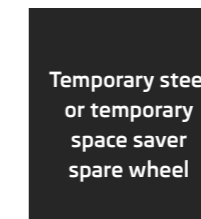


Partial Leather upholstery & Onyx dash or Partial Leather upholstery & Silver dash

Option

Available on all models (except GreenLine II)

Option



See page 12 for details

Please note all interiors come with black carpets and floor mats

Pictures are for illustrative purposes only.

Please visit your local retailer for further information.

The ŠKODA Roomster Engine Specifications

Petrol Engines	1.2 12V 69PS	1.2 TSI 86PS	1.2 TSI 105PS	1.2 TSI 105PS DSG
Trim level	S / SE	S / SE / Scout	SE / Scout	S / SE / Scout
Type	3-cylinder in-line engine	4-cylinder in-line engine	4-cylinder in-line engine	4-cylinder in-line engine
Valves per cylinder	4	2	2	2
Fuel injection type	Multipoint Fuel Injection	Electronically Controlled Direct Injection	Electronically Controlled Direct Injection	Electronically Controlled Direct Injection
Cubic capacity cc	1,198	1,197	1,197	1,197
Bore x stroke mm	76.5 x 86.9	71.0 x 75.6	71.0 x 75.6	71.0 x 75.6
Air pollution regulation	EU 5	EU 5	EU 5	EU 5
Compression ratio	10.5:1	10.0:1	10.0:1	10.0:1
Performance				
Max speed mph (km/h)	99 (159)□	107 (172)□	114 (184)□	114 (184)□
Acceleration 0-62mph	15.9	12.6	10.9	11.0
Max. performance (PS/rpm)	69 / 5,400	86 / 4,800	105 / 5,000	105 / 5,000
Max. torque (Nm/rpm)	112 / 3,000	160 / 1,500 - 3,500	175 / 1,500 - 4,100	175 / 1,550 - 4,100
Fuel consumption mpg (l/100km)				
Urban*	34.5 (8.2)	39.8 (7.1)	39.8 (7.1)	39.2 (7.2)
Extra Urban*	56.5 (5.0)	57.7 (4.9)	57.7 (4.9)	58.9 (4.8)
Combined*	45.6 (6.2)	49.6 (5.7)	49.6 (5.7)	49.6 (5.7)
CO ₂ emissions g/km*	143	134	134	134

□ Where law permits

Power transmission

Clutch Hydraulically-activated single-plate dry clutch with diaphragm spring, asbestos-free coating

Manual transmission Five-speed manual transmission, fully synchronised with direct gearshift

Automatic transmission- 7 speed DSG Two coaxial dry multiple disc clutch, electro - hydraulically operated

Chassis

Front axle/rear axle McPherson suspension with lower triangular links and torsion stabiliser, compound link crank-axle

Suspension Telescopic shock absorbers with coil springs, in the rear outside the springs

Braking system Hydraulic dual-diagonal circuit braking system vacuum assisted

Front brakes Disc brakes with inner cooling, with single/piston floating caliper

Rear brakes Drum brakes with two self-adjusting brake shoes, or disc brakes (depending on engine type)

Handbrake Mechanical handbrake operating on rear wheels

Steering Direct rack and pinion steering with electrohydraulic power steering

Turning circle (m) 10.5

Diesel Engines	1.2 TDI CR 75PS DPF	1.6 TDI CR 90PS DPF	1.6 TDI CR 105PS DPF
Trim level	GreenLine II	SE / Scout	SE / Scout
Type	3-cylinder in-line engine	4-cylinder in-line engine	4-cylinder in-line engine
Valves per cylinder	4	4	4
Fuel injection type	Electronically Controlled Direct Injection	Electronically Controlled Direct Injection	Electronically Controlled Direct Injection
Cubic capacity cc	1,199	1,598	1,598
Bore x stroke mm	79.5 x 80.5	79.5 x 80.5	79.5 x 80.5
Air pollution regulation	EU 5	EU 5	EU 5
Compression ratio	16.5:1	16.5:1	16.5:1
Performance			
Max speed mph (km/h)	103 (165)□	106 (171)□	112 (181)□
Acceleration 0-62mph	15.4	13.3	11.5
Max. performance (PS/rpm)	75 / 4,200	90 / 4,200	105 / 4,400
Max. torque (Nm/rpm)	180 / 2,000	230 / 1,500-2,500	250 / 1,500-2,500
Fuel consumption mpg (l/100km)			
Urban*	56.5 (5.0)	49.6 (5.7)	49.6 (5.7)
Extra Urban*	76.4 (3.7)	68.9 (4.1)	68.9 (4.1)
Combined*	67.3 (4.2)	60.1 (4.7)	60.1 (4.7)
CO ₂ emissions g/km*	109	124	124

□ Where law permits

Tank

Fuel tank content (litres) 55

Fuel Lead-free petrol with RON 95 or Lead-free petrol with RON 91[†]

Fuel Diesel

Body type Five-door, two compartments, five seater

Drag co-efficient standard 0.33 Greenline II 0.31

Official fuel consumption for the Roomster range in mpg (litres/100km):

urban 34.5 (8.2) - 56.5 (5.0);
extra urban 56.5 (5.0) - 76.4 (3.7);
combined 45.6 (6.2) - 67.3 (4.2).

CO₂ Range 143 - 109 g/km

[†]Using low-octane fuel may affect engine performance.

We measure the maximum power output figures of our engines in PS or Pferdestärke (horse strength in German), which is the metric equivalent of bhp. To convert from metric to imperial horsepower, divide the PS figure by 1.0139.

*Standard EU Test figures are for comparative purposes and may not reflect real driving results. Fuel consumption and CO₂ figures are obtained under standardised EU test conditions (Directive 93/116/EEC). This allows a direct comparison between different manufacturer models but may not represent the actual fuel consumption achieved in 'real world' driving conditions. More information is available on the ŠKODA website at skoda.co.uk and at vca.gov.org

Measurements and Weights

The ŠKODA Roomster

Interior dimensions (mm)

Legroom - front max./min. 1,063 / 843
 Legroom - rear max./min. 945 / 700

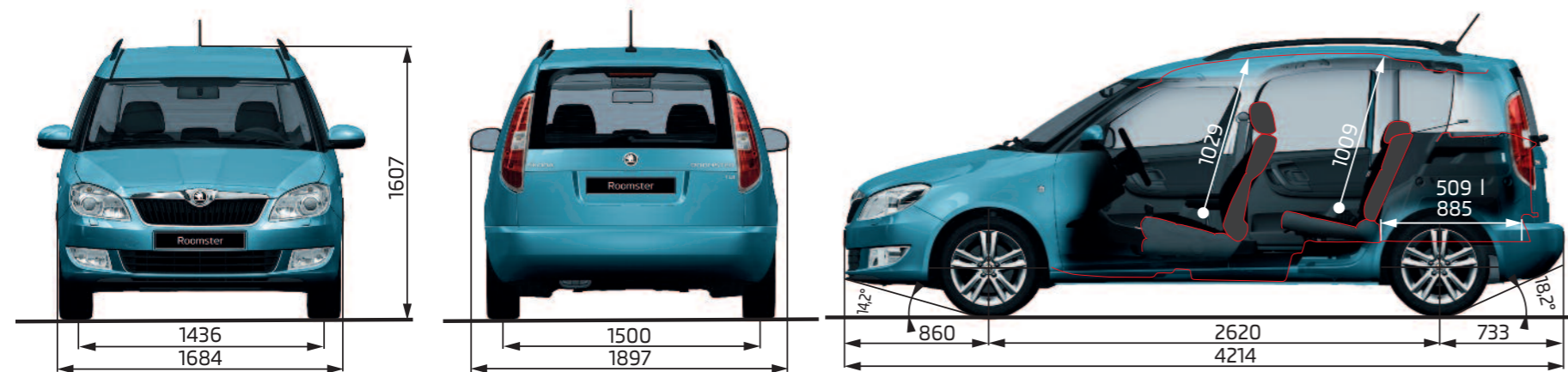
Luggage storage space (litres)

With rear seats up 450
 With rear seats backrests down 1,555
 With rear seats removed 1,780
 With rear seats up (no spare wheel) 480

With rear seats backrest down (no spare wheel) 1,585
 with rear seats removed (no spare wheel) 1,810

Ground clearance (mm)

Standard 140
 GreenLine II 140



Petrol	1.2 12V 69PS	1.2 TSI 86PS	1.2 TSI 105PS	1.2 TSI 105PS DSG
Weight				
Kerb weight* kg	1,125	1,146	1,162	1,196
Total weight kg	1,655	1,676	1,692	1,726
Payload** kg	530	530	530	530
Max roof load kg	75	75	75	75
Towing unbraked max kg	450	450	450	450
Towing braked max kg	700	1,000	1,100	1,100
Nose weight max kg	50	50	50	50

Diesel	1.2 TDI CR 75PS DPF	1.6TDI CR 90PS	1.6TDI CR 105PS
Weight			
Kerb weight* kg	1,239	1,247	1,247
Total weight kg	1,769	1,777	1,777
Payload** kg	530	530	530
Max roof load kg	75	75	75
Towing unbraked max kg	450	450	450
Towing braked max kg	1,000	1,200	1,200
Nose weight max kg	50	50	50

* Kerb Weight is the mass of the vehicle with body work in running order ** Payload includes Driver at 75kg & Equipment

All measurements and weights are correct at time of going to print but may be subject to change and may vary according to passengers and load in vehicle.






ŠKODA Solutions. Your journey, your choice.

ŠKODA Finance like to do things a little differently, that's why for many years we've specialised in providing simple and convenient funding options for ŠKODA drivers. It's what we know.

ŠKODA Solutions, the personal contract plan, is all about you; a flexible, competitive fixed-rate plan designed around you and your budget, putting you firmly in the Roomster driving seat.

Solutions is different because you defer a proportion of the car's value until the end of the agreement, giving you significantly lower monthly repayments than if you'd taken out a loan...ever heard of a bank being so imaginative?

Solutions is totally flexible. You get to choose the size of your deposit (from as little as one monthly payment), and a repayment period which suits you and at the end of the term you have 3 options to choose from.

- 1  Part-exchange the car for a new ŠKODA on a new Solutions contract.
- 2  Pay the optional final payment so that you own the car.*
- 3  Circumstances changed? Return the car to us (subject to terms and conditions).



  **DEPOSIT**

As little as one repayment

  **BALANCE**

A flexible repayment period
(18-42 months)

    **OPTIONAL FINAL PAYMENT**

3 choices at the end of the agreement

ŠKODA Finance also offers hire purchase, contract hire and service and maintenance plans.

Speak to your ŠKODA retailer for your personalised quotation today

*Subject to payment of the option to purchase fee. An offer of finance depends on certain conditions. Subject to status. Available to 18's and over in the UK only.
ŠKODA Finance. ŠKODA Finance is a trading name of Volkswagen Financial Services (UK) Limited, Brunswick Court, Yeomans Drive, Blakelands, Milton Keynes MK14 5LR. Registered in England number 2835230.

Free Insurance for 3 years.

No-one likes to think about their ŠKODA being damaged in an accident. But if it was you'd no doubt want it repaired to ŠKODA standards, by a ŠKODA trained technician using only ŠKODA genuine parts. Would your motor insurance provider guarantee to do that? We didn't think so...

That's why we came up with Ensurance - ŠKODA's free accident and repair cover.

Ensurance works alongside your existing comprehensive motor insurance policy, no matter who you are insured with, to help get you back on the road as smoothly as possible. Better still, it's free for three years and is available on both new and older models.

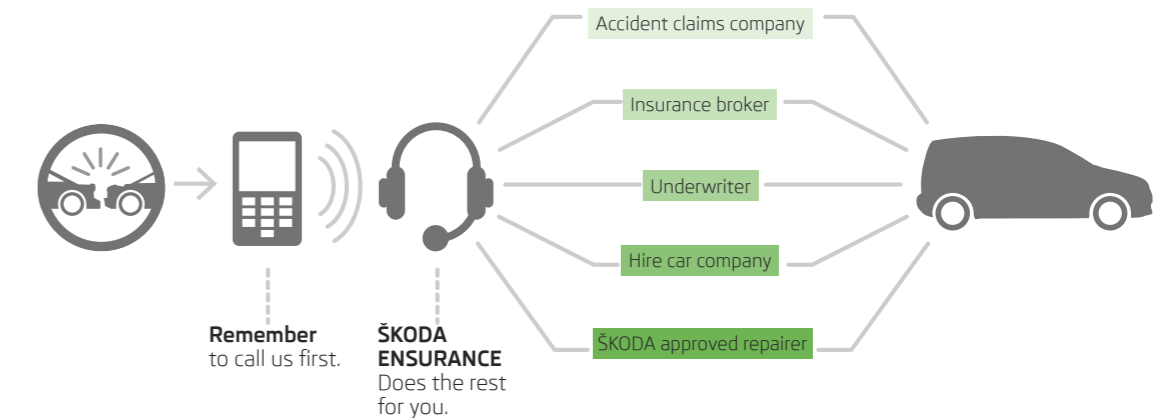
Your free Ensurance cover includes:

- > Guaranteed use of a ŠKODA approved repairer, ŠKODA trained technicians and the use of genuine ŠKODA parts and paints
- > A dedicated Claims Manager who will look after your entire claim from start to finish
- > Help to recover any uninsured losses with our Legal Expenses Cover
- > An Online claims tracker so you can keep up to date with the status of any claim

To benefit from Ensurance you'll need to activate your free cover which takes less than a minute.

We hope you don't ever have to use your policy but it's nice to know it's there - just in case.

**Remember to call us first,
Ensurance will help deal
with the rest...**



Your car is **guaranteed** to be repaired by a ŠKODA Insurance approved repairer. Only **genuine ŠKODA parts will be used.**

For more information and to take out cover today visit skoda-ensurance.co.uk

ŠKODA Insurance motor insurance is sold, underwritten and administered by Allianz Insurance plc.

Technical glossary

ABS: the anti-lock braking system prevents the wheels from locking during heavy or emergency braking, enabling the vehicle to remain steerable. When braking, wheel speed sensors measure the road wheel speed and should one or more wheels start to lock the system reduces brake pressure to that wheel.

The ABS system includes:-

- EBC**: Electronic brake control. The engine brake torque control regulates the power supply by intervening with the engine management system.

CAN Bus: the CAN Bus is an electronic data bus which links the various different electronic control systems in the car. It ensures ideal co-ordination between systems and reduces the amount of wiring needed in the car.

Fuel cut-out: should one or more of the airbags inflate after an accident, this system automatically cuts out the fuel supply, thus preventing subsequent leakage of the diesel or petrol.

Trip Computer: the trip computer not only features an impressive range of data displays, operating it is simplicity itself. A multifunction touch key enables you to call up all relevant data on the easy-to-read display. Features include external temperature, time, current fuel consumption, average fuel consumption, miles driven and average speed.

DPF: Diesel particulate filter is part of the exhaust system responsible for cleaning the engine exhaust gases before they enter the atmosphere. The DPF catches soot particles emitted in the exhaust gas and it works in conjunction with the catalytic converter, which reduces the amount of harmful gases entering the atmosphere. The DPF must periodically be emptied of the soot particles, a process known as regeneration. This involves elevated exhaust system temperatures. A driving style is required during regeneration, where a constant vehicle speed above 37 mph must be maintained. This does not always suit customers who make frequent short journeys or experience stop/start driving or drive within inner-city or urban areas.

CR: the completely new range of diesel engines are built on a system of Common-Rail fuel injection. The diesel engines have a high-pressure common rail direct injection fuel system and four-valve technology. As a result, the new engines are much quieter, more refined in their operation and consume less fuel, compared to the Pump Duse engines and significantly reduce emissions.

ESC: Electronic stability control is designed to stabilise the dynamic handling response of the vehicle by counteracting any tendency towards oversteer or understeer. The ESC constantly compares the actual movement of the vehicle with predetermined values and according to the situation ESC reacts by braking each wheel individually (according to direction of slip) and automatically adjusting the engine's output.

Elements of ESC system:-

- ASR**: Anti-slip regulation traction control ensures the Roomster's stability when pulling away or accelerating. If the engine power or torque being transmitted to the drive wheels is too great, for example on a slippery road surface, engine torque is automatically reduced until optimum road holding returns, thus preventing wheel spin. A light indicates whether the ASR system is on. It can be manually switched off.

- EDL**: the electronic differential lock continually compares the rpm of the drive wheels, and if it identifies a difference between them which could lead to an individual wheel spinning, for example if the two wheels are on different types of surface or accelerating on wet leaves, the system brakes the wheel affected until uniform rpm of all drive wheels is restored.

- HBA**: Hydraulic brake assistant increases the optimal build-up of brake power. It ensures complete use of the brake system potential, thus shortening the braking distance.

HHC: Hill hold control allows for a safe hill start by holding the brake for a small amount of time, reducing the risk of unintentional reversing or roll back.

TPM: draws the driver's attention to any pressure loss in any of the tyres. Early warning can prevent damage from occurring as a result of an under inflated tyre or a defect that radically changes the cars behaviour and driveability.

Customer services

Talk to us on 03330 037 504

No matter what the query, our dedicated call centre is always ready to listen. No matter how big or small the request, speak to one of our customer care advisors to see if they can help. The call centre is open from 8.30am-5.30pm. If you're calling out of hours, then a message can be left and you'll be contacted back.

Peace of mind with a ŠKODA warranty

In the first two years of owning your car, you'll get the peace of mind of a two year unlimited mileage warranty. In addition, you'll also get a further warranty on new vehicles supplied through the appointed dealer network until the vehicle has completed 60,000 miles or the end of the third year, whichever is sooner.

Your Roomster also benefits from a 3 year paint warranty and 12 year body protection warranty.

A network that's here to help

With 17 years in the top 10 of JD Power's customer satisfaction survey, our network of approximately 160 authorised repairers know how to treat a customer. You can be sure that as a ŠKODA customer, your retailer will look after you from the moment you walk through the door, throughout the life of your ŠKODA. Your Roomster will be serviced and maintained to the highest standards by specially trained ŠKODA technicians. And when you need a spare part you'll be happy to know that most are held in stock, or can be ordered within 24 hours. So if top class customer satisfaction is what you're after, the ŠKODA network will be there for you.

Motability

People in receipt of the Higher Mobility Component of the Disability Living Allowance receive special help from ŠKODA. Preferential prices on low cost Contract Hire are available through your local approved Motability retailer. For full details, contact your retailer.

If your ŠKODA's in trouble, rely on ŠKODA Assistance

Completely free of charge, every new ŠKODA is covered by ŠKODA Assistance. This cover lasts for 3 years, with no mileage limit. So if you ever break down, you can use the freephone number to call out someone who really knows about ŠKODA cars to help. This service is even available in Europe, so you don't need additional breakdown cover when you're driving on the continent.

Financing your ŠKODA

We all know that times are hard, so ŠKODA Finance specialises in providing funding solutions for ŠKODA drivers. Regardless of whether you're a private or business user, you can choose from a range of funding options.

Finance products available are:

- Solutions – a personal contract plan
- Hire purchase
- Lease purchase
- Finance lease
- Contract hire

With all ŠKODA Finance products you can choose a fixed-cost maintenance plan designed to help you budget accurately. No matter what finance product you choose, your local ŠKODA retailer will be able to provide you with a personalised quote that could meet your budget and vehicle needs. ŠKODA Finance is a trading name of Volkswagen Financial Services (UK) Limited, Brunswick Court, Yeomans Drive, Blakelands, Milton Keynes MK14 5LR. Registered in England number 2835230.

Adding that little extra to your car

If the standard specification and factory fitted options aren't enough for you, then why not take a look at our range of retailer fitted accessories? A separate accessories brochure can be found at your local retailer, or can be ordered by phoning our call centre, or by going on-line at skoda.co.uk

Extended warranty

Exclusions and limitations

Wear and tear components will only be considered under the terms of the warranty for the first of six months or 6,500 miles, whichever is soonest. These include, but are not limited to brake linings and disc pads, clutch release bearings, clutch pressure plates and centre plates, tyres, wiper blades, seat and backrest covers, floor coverings, spark plugs, batteries for key fobs and alarms, light bulbs and shock absorbers.

Mechanical adjustments including but not limited to adjustments to doors, flaps, boot lids, bonnets and sunroof, brake adjustment, clutch adjustment, v belt adjustment, ignition adjustment, headlight adjustment, steering geometry adjustments and wheel balancing are excluded.

Damage (including but not limited to the following) is excluded:

- Damage caused by your failure to take all reasonable steps to prevent mechanical damage from occurring.
- Damage or defects caused by not having the vehicle serviced in accordance with the manufacturer's guidelines.
- Damage or defects caused by improper use of the vehicle, neglect or use of the vehicle for motor sports activities.
- Damage caused by an accident.
- Damage to paintwork or chrome caused by external influences, such as climatic, chemical or industrial pollution.
- Damage resulting from the use of non-original replacement parts.

Routine maintenance and servicing is not covered by the warranty. Incidental or consequential costs such as hotel charges, car hire, loss of personal effects or income are not recoverable under the terms of the warranty.

Calculating your tax liability

To find out how much tax you will pay, simply take the P11D value, then multiply this figure by the BiK percentage. Then simply multiply this figure by 20% or 40% depending on the level of income tax that you pay.

Please note if your employer provides you with free fuel, this is treated as an additional taxable benefit.

For more information on company car taxation please visit the HM revenue and customs website hmrc.gov.uk

BiK calculation example- Roomster S 1.2 12v 69PS 5spd	
P11D value	£11,905.00
Company Car BiK tax based on CO ₂ emission level	21%
Taxable BiK (for 2014/2015 tax year): 21% of £11,905.00	£2,500.05
Annual company car tax (2014/15)	
20% Income Tax: 20% of £2,500.05	£500.01
40% income Tax: 40% of £2,500.05	£1,000.02
Monthly company car tax (2014/15)	
20% Income Tax: £500.01 divide by 12 months	£41.67
40% income Tax: £1000.02 divide by 12 months	£83.34

An offer of finance depends on certain conditions. Subject to status. Indemnities may be required. Available to people over 18 in the UK only. ŠKODA Finance.



The information in this brochure referring to specification, design, equipment, material and external appearance relates to the time at which this brochure was printed. Whilst every effort is made to ensure its accuracy, the information in this brochure is not binding and is subject to alteration. Some illustrations in this brochure depict left hand drive models, with both standard and optional equipment shown. Please confirm exact specifications, prices and colour availability with your SKODA retailer who will be notified of any specification changes as they occur.

Edition: UK 01/15

Information: 03330 037 504

Internet: skoda.co.uk

E-mail: customerservices@skoda.co.uk

Welcome to your SKODA retailer