



2018 BUICK

# CASCADA



A beautiful, spirited convertible from Buick, Cascada is meticulously crafted for those who **LIVE LIFE WIDE OPEN.**

And to inspire your sense of style, Cascada now adds two new convertible top colors and more exterior color choices and introduces a stunning new Carrageen Metallic exterior color exclusive to Sport Touring.



Cascada Sport Touring shown in Carrageen Metallic with available features

Cascada Premium shown in Ebony Twilight Metallic with Sweet Mocha top and available features







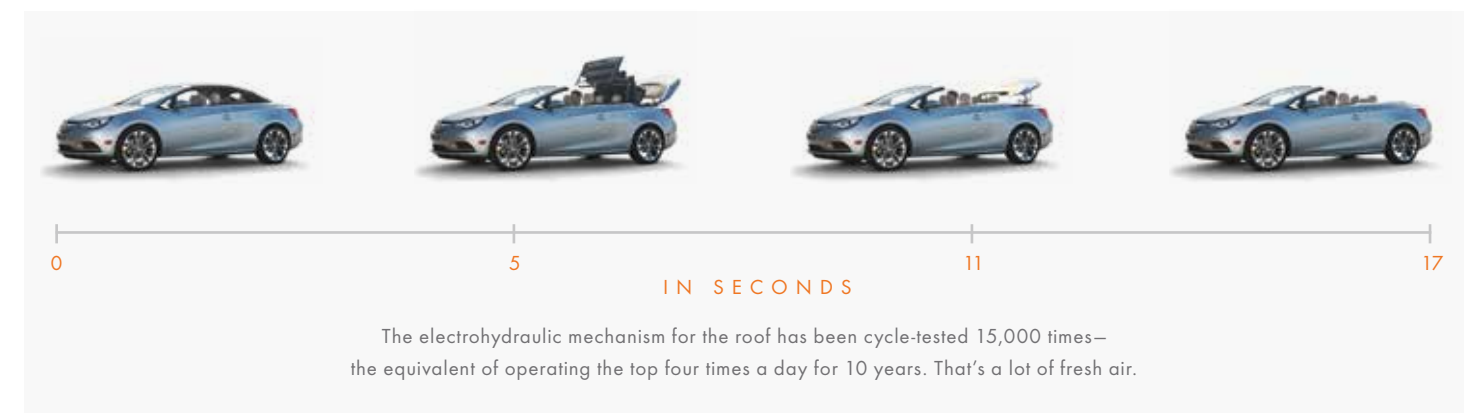
## CONVERT

UP OR DOWN? CASCADA EFFORTLESSLY TRANSFORMS TO SUIT YOUR PLEASURE.

It takes just 17 seconds for Cascada's convertible top to lower. As the convertible top automatically retracts, the rear deck lid opens rearward, and the top folds and stows under a hard tonneau cover behind the rear seats, giving Cascada a pure open-air aesthetic. The top can be lowered when driving up to 31 mph.

Want the top up? It's easy to see why, with two new top colors—Malbec and Sweet Mocha—available on the Premium model. And it takes just 19 seconds to raise the top, which can also be done while driving up to 31 mph.

Cascada was designed for your storage needs, too. With the top up, trunk space is 13.4 cubic feet.<sup>1</sup> With the top down, it's 9.8 cubic feet.<sup>1</sup>



<sup>1</sup>Cargo and load capacity limited by weight and distribution.



Designed from the outset as a true four-passenger convertible, Cascada offers spacious seating. Your rear-seat passengers will find the second-row Easy Entry System especially helpful. Simply start to flip the front seatback forward, and the rest happens automatically. The seat moves up to make room, then returns to its original position when the seatback is moved rearward.





## DETAILS

TAKE A LOOK INSIDE CASCADA AND YOU'LL SEE THE THOUGHT PUT INTO EVERY DETAIL.

Refined materials, inviting textures, premium features and intuitive technologies: Cascada artfully fuses each of these elements into an unforgettable driving experience.

Cascada is accommodating no matter the weather. When you're soaking up the sun, Cascada's heat-reflective leather-appointed seating helps keep things cooled down. When there's a chill in the air, thermal barriers in Cascada's top help the interior stay warm when you're driving with the top up. Also keeping you warm are heated driver and front-passenger seats and a heated, leather-wrapped steering wheel.

- To make reaching the safety belt easier at shoulder level, simply close the door, turn the key and the front electronic safety belt presenters slide forward. Once the safety belt has been fastened, the presenter automatically returns to its original position.
- To help keep you organized, Cascada has 13 places where you can easily and conveniently store your possessions.
- When the 50/50 split second-row seats are folded flat, a pass-through from the trunk creates extra space for luggage or longer objects.



Cascada Sport Touring with Dark Effects Package shown in Jet Black with Red stitching





Want the boldest expression of Cascada style? Take a look at the **CASCADA SPORT TOURING**. The performance-oriented model includes a unique flat-bottom leather-wrapped sport steering wheel, sport pedals and 20-inch alloy wheels. And it comes in a new, exclusive exterior color, Carrageen Metallic. Want to elevate the bold look of Sport Touring even further? The available Dark Effects Package adds details like gloss-black exterior accents and interior design cues like red stitching. And this year, Ebony Twilight Metallic and Summit White join Sport Red as available exterior colors with the Dark Effects Package.



A Buick convertible and an open road: two things that make for an extraordinary drive, whether you're headed across town or across the country. It starts with an exceptionally rigid chassis, essential to achieving **REFINED DRIVING DYNAMICS**. In Cascada, this firm foundation translates into a feeling of supreme confidence. As the driver, you'll immediately sense the power of its turbocharged engine and the agility of its sport-tuned suspension.





## RESPONSIVE

TURBOCHARGED PERFORMANCE,  
POWERFUL RESULTS.

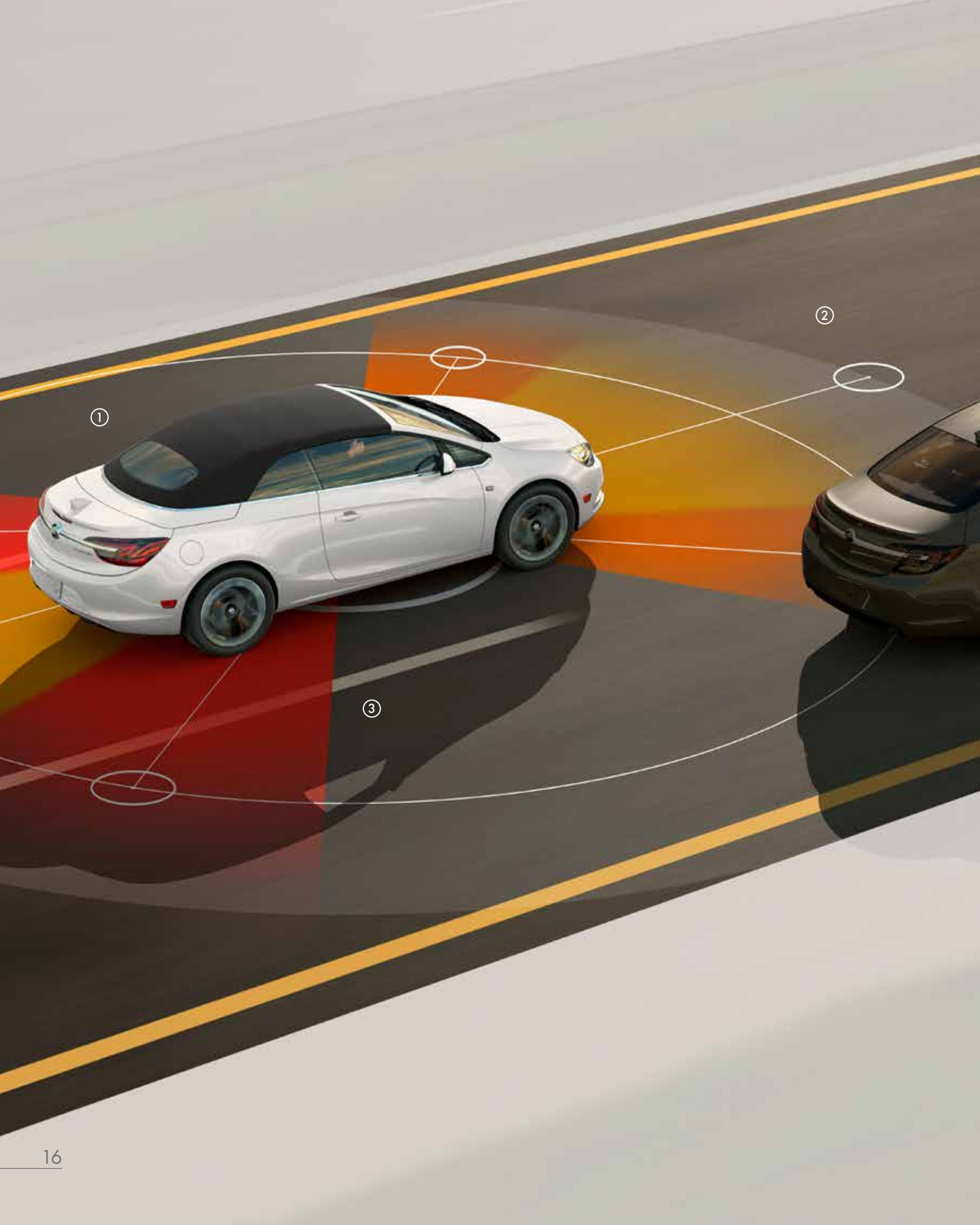
Cascada's turbocharged engine rewards you with seamless performance. The power at your command is smooth and quiet, thanks to the engine's twin harmonic balancing shafts. Leaving you to enjoy perfect harmony with the road.

- **1.6L I-4 TURBO ENGINE** Rated at 200 horsepower, the compact 1.6L inline 4-cylinder turbocharged engine delivers strong torque, too—an estimated 207 lb-ft. There's even an overboost phase that briefly pushes torque to an estimated 221 lb-ft.
- **HIPER STRUT FRONT SUSPENSION** An innovative HiPer Strut front suspension uses dual-path top mounts to separate the spring and damper loads transferred to the body structure. When something impacts the front suspension, the negative effects on steering feedback are minimized: There's less torque steer and more camber control, allowing you to enjoy a more direct, linear steering response.
- **STRUCTURAL DYNAMICS** A rigid chassis is at the core of Cascada's refined driving experience. Minimizing chassis flex meant our engineers could tune the suspension and steering characteristics with a high degree of precision. The result: handling control, ride comfort and an overall sense of driving confidence.
- **ELECTRIC POWER STEERING** Steering inputs are executed by a rack-mounted electric power steering system. It gives you more immediate steering feedback, while stopping power is handled by four-wheel anti-lock disc brakes.
- **SPORT-LOWERED CHASSIS** To help Cascada get optimal grip from its big, bold 20-inch alloy wheels, the suspension engineers lowered the chassis. What better way to raise your adrenaline?



Cascada Sport Touring with Dark Effects Package  
shown in Ebony Twilight Metallic





## SMART

CASCADA SURROUNDS YOU WITH SAFETY TECHNOLOGIES, INCLUDING AVAILABLE ADVANCED DRIVER-ALERT AND COLLISION-WARNING SYSTEMS.

Cascada's safety engineering starts with a rigid body structure purpose-built as a convertible with strategic use of high-strength steel. The windshield pillars use press-hardened steel in the inner structures, reinforced with high-strength hot-rolled and cold-bent tubes within the pillars. And available Front and Rear Park Assist helps take the worry out of pulling into or out of parking spaces. A standard Rear Vision Camera helps make backing up a breeze.

Up front, a 7-inch diagonal color touch-screen has the Buick Infotainment System<sup>1</sup> display that provides on-the-go information, including Navigation<sup>2</sup> and text-message alerts.<sup>3</sup> And Siri<sup>®</sup> Eyes Free<sup>4</sup> lets you use your voice to control your iPhone.<sup>®</sup>

Safety features are no substitute for the driver's responsibility to operate the vehicle in a safe manner. The driver should remain attentive to traffic, surroundings and road conditions at all times. Read the vehicle Owner's Manual for important feature limitations and information.

### ① ROLLOVER POP-UP BARS

Hidden behind the rear seats are high-strength steel pop-up roll bars. When the possibility of a rollover is detected, pop-up bars deploy and are designed to extend nearly 14 inches to approximately the height of the windshield.

### ② FORWARD COLLISION ALERT

This available technology can help you prevent frontal crashes by sensing when you are approaching a detected vehicle in front of you too quickly, alerting you with visual warnings and audible beeps.

### ③ LANE DEPARTURE WARNING

Using an onboard camera, available Lane Departure Warning constantly monitors lane markings on the road. If it senses you are moving from your lane without using your turn signal, it gives you a visual and audible alert to help you be aware.

<sup>1</sup>Full functionality requires compatible Bluetooth<sup>®</sup> and smartphone. Some devices require USB connectivity. Data plan rates apply. <sup>2</sup>Map coverage available in the United States, Puerto Rico and Canada. <sup>3</sup>Requires a compatible smartphone with Bluetooth profile (M.A.P.) and applicable text-messaging features. Visit [my.buick.com/learn](http://my.buick.com/learn) for vehicle and smartphone eligibility. <sup>4</sup>Requires Buick Infotainment System and compatible iPhone<sup>®</sup> running iOS 6 or newer.





## CONNECT

WITH A BUILT-IN WI-FI® HOTSPOT,<sup>1</sup> CASCADA LETS YOU STAY CONNECTED TO WHAT'S ON YOUR SMARTPHONE.

The available OnStar Wi-Fi hotspot<sup>1</sup> now travels with you. Stay connected and move effortlessly from home to work to just about anywhere without losing touch. Stream movies and TV on the go, using your favorite apps on your compatible Wi-Fi devices.

The built-in Wi-Fi hotspot<sup>1</sup> supports up to seven devices, so passengers can surf, scan, create, post and game their way through the journey at 4G LTE speed.

After initial setup, when your vehicle is on, your hotspot is available and ready to connect to your devices, so it's easy to use. Our strong signal means you have a fast and reliable connection.

Your first 3 months or 3GB of data (whichever comes first) are included with your new Cascada. After that, you can continue enjoying all of your favorite entertainment while on the go with the Unlimited Data Plan<sup>2</sup> or select another plan that's right for you.

<sup>1</sup>Requires a compatible mobile device, active OnStar service and data plan. 4G LTE service available in select markets. Data plans provided by AT&T.® <sup>2</sup>Unlimited data plan provided by AT&T. After 22GB of any data usage on a line in a bill cycle, AT&T may slow the data on that line during periods of network congestion for the remainder of the cycle. See [att.com/broadbandinfo](http://att.com/broadbandinfo) for details on AT&T network management policies. Data plans provided by AT&T.



# PERSONALIZE

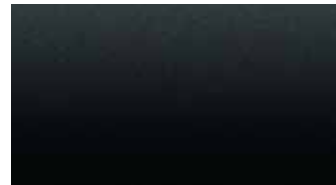
COLOR AND WHEEL SELECTIONS  
MAKE OUR CASCADA YOUR CASCADA.

## EXTERIOR COLORS

SUMMIT WHITE<sup>1</sup>



EBONY TWILIGHT METALLIC<sup>1,2,3</sup>



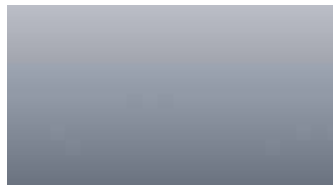
RIOJA RED METALLIC<sup>2,4</sup>



SMOKED PEARL METALLIC<sup>2,4</sup>



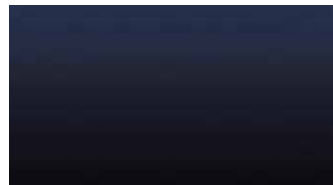
FLIP CHIP SILVER METALLIC<sup>2,4</sup>



CARRAGEEN METALLIC<sup>5</sup>



DARK MOON BLUE METALLIC<sup>2,6</sup>



SPORT RED<sup>7</sup>



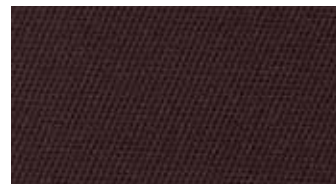
<sup>1</sup>Requires Dark Effects Package on Sport Touring model. <sup>2</sup>Additional charge, premium paint. <sup>3</sup>Available on Premium and Sport Touring models only. Not available on Cascada (1SV).  
<sup>4</sup>Available on Premium model only. Not available on Cascada (1SV) or Sport Touring models. <sup>5</sup>Available on Sport Touring model only. Not available with Dark Effects Package.  
<sup>6</sup>Not available on Sport Touring model. <sup>7</sup>Only available on Sport Touring model with Dark Effects Package.

## TOP COLORS

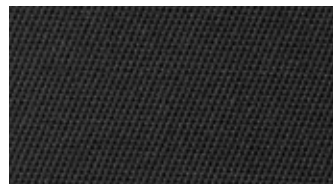
MALBEC<sup>8,9</sup>



SWEET MOCHA<sup>8</sup>



EBONY



Available on Rioja Red Metallic, Summit White and Ebony Twilight Metallic.

Available on Summit White and Ebony Twilight Metallic.

Available on all exterior colors. Required on Sport Touring models.

<sup>8</sup>Only available on Premium model.  
<sup>9</sup>Not available with Light Neutral interior on Summit White or Ebony Twilight Metallic.

## WHEELS

20" DIAMOND GRAPHIC  
TWIN-SPOKE BI-COLOR FINISH



20" DYNAMIC TWIN-SPOKE  
BI-COLOR FINISH



20" DYNAMIC TWIN-SPOKE  
WITH BLACKED-OUT POCKETS  
Exclusive to Sport Touring



## INTERIOR COLORS

LIGHT NEUTRAL WITH JET BLACK ACCENTS<sup>1,2</sup> LEATHER-APPOINTED SEATING



JET BLACK WITH JET BLACK ACCENTS<sup>2</sup> LEATHER-APPOINTED SEATING



JET BLACK WITH JET BLACK ACCENTS AND RED STITCHING<sup>3</sup> LEATHER-APPOINTED SEATING



<sup>1</sup>Available on Premium and Sport Touring models only. <sup>2</sup>Not available with Dark Effects Package. <sup>3</sup>Requires Dark Effects Package.



# FEATURES

● STANDARD ◇ AVAILABLE — NOT AVAILABLE

CASCADE (1SV) PREMIUM SPORT TOURING

1.6L I-4 TURBO ENGINE	●	●	●
6-SPEED AUTOMATIC TRANSMISSION	●	●	●
HIPER STRUT FRONT SUSPENSION	●	●	●
AUTOMATIC CONVERTIBLE SOFT-TOP SYSTEM WITH ACOUSTIC AND THERMAL INSULATION	●	●	●
HEAT-REFLECTIVE LEATHER-APPOINTED SPORT BUCKET FRONT AND REAR SEATS	●	●	●
10-WAY POWER-ADJUSTABLE HEATED FRONT SEATS	●	●	●
HID ARTICULATING HEADLAMPS	●	●	●
BUICK INFOTAINMENT SYSTEM <sup>1</sup> WITH NAVIGATION <sup>2</sup> AND 7" DIAGONAL TOUCH-SCREEN DISPLAY	●	●	●
ONSTAR WI-FI <sup>3</sup> HOTSPOT (3-month/3GB data trial, whichever comes first)	●	●	●
ONSTAR BASIC PLAN <sup>4</sup> (5 years, includes select myBuick mobile app <sup>5</sup> features)	●	●	●
ONSTAR GUIDANCE PLAN <sup>6</sup> (Limited service trial excludes Hands-Free Calling minutes)	●	●	●
HEATED STEERING WHEEL	●	●	●
6 STANDARD AIR BAGS <sup>7</sup>	●	●	●
AUTOMATED ROLLOVER POP-UP BARS	●	●	●
ELECTRONIC SAFETY BELT PRESENTER SYSTEM	●	●	●
REAR VISION CAMERA	●	●	●
REAR PARK ASSIST	●	●	●
FRONT PARK ASSIST	—	●	●
AIR DEFLECTOR	—	●	●
RAINSENSE WIPERS	—	●	●
LANE DEPARTURE WARNING	—	●	●
FORWARD COLLISION ALERT	—	●	●
20" DIAMOND GRAPHIC TWIN-SPOKE BI-COLOR FINISH WHEELS	●	◇	—
20" DYNAMIC TWIN-SPOKE BI-COLOR FINISH WHEELS	—	●	—
20" DYNAMIC TWIN-SPOKE WHEELS WITH BLACKED-OUT POCKETS AND GLOSS-BLACK FINISH	—	—	●

## PACKAGES

<b>DARK EFFECTS PACKAGE:</b> • Red stitching on the seats, door and instrument panel • Piano-black trim decor on the door, center stack and instrument panel • Body-color fog lamp accents and rear accent moldings • Gloss-black mirror caps and grille • Requires Ebony convertible top and Jet Black interior. Available in Summit White, Ebony Twilight Metallic and Sport Red exterior colors.	—	—	◇
<b>DRIVER CONFIDENCE PACKAGE:</b> • Forward Collision Alert • Lane Departure Warning • Front and Rear Park Assist • Rainsense wipers • Headlamp tunnel detection	—	●	●

<sup>1</sup>Full functionality requires compatible Bluetooth® and smartphone. Some devices require USB connectivity. Data plan rates apply. <sup>2</sup>Map coverage available in the United States, Puerto Rico and Canada. <sup>3</sup>Requires a compatible mobile device, active OnStar service and data plan. 4G LTE service available in select markets. Visit onstar.com for coverage map, details and system limitations. Data plan provided by AT&T. <sup>4</sup>Does not include emergency or security services. <sup>5</sup>Requires data plan, compatible vehicle and compatible device. Some features require factory-installed remote start, power locks, Tire Pressure Monitoring System or active OnStar service. <sup>6</sup>Visit onstar.com for coverage map, details and system limitations. <sup>7</sup>A NOTE ON CHILD SAFETY: Always use safety belts and the correct child restraint for your child's age and size, even with air bags. Even in vehicles equipped with the Passenger Sensing System, children are safer when properly secured in a rear seat in the appropriate infant, child or booster seat. Never place a rear-facing infant restraint in the front seat of any vehicle equipped with an active frontal air bag. See your vehicle Owner's Manual and child safety seat instructions for more safety information.



# SPECIFICATIONS

DIMENSIONS AND CAPACITIES

## CAPACITIES

Engine Type	1.6L DOHC SIDI w/VVT Turbo
Horsepower	200 @ 5500 rpm
Torque	207 lb-ft @ 1800-4500 rpm
EPA-estimated mpg	21 city/29 hwy
Cargo Capacity, Top Up (cu. ft.) <sup>1</sup>	13.4
Cargo Capacity, Top Down (cu. ft.) <sup>1</sup>	9.8

## DIMENSIONS (INCHES)

Wheelbase	106.1	Head room, front	37.8
Overall length	184.9	Head room, rear	36.1
Body width	79.5	Shoulder room, front	54.6
Overall height	56.8	Shoulder room, rear	45.8
Track width, front	62.5	Leg room, front	42.2
Track width, rear	62.5	Leg room, rear	32.8

<sup>1</sup>Cargo and load capacity limited by weight and distribution.





CONNECT TO A SPECIALLY TRAINED ONSTAR ADVISOR JUST BY PUSHING THE BLUE ONSTAR BUTTON IN YOUR CASCADA.



Every 2018 Cascada includes the OnStar 5-Year Basic Plan<sup>2</sup> plus a limited service trial of the Guidance Plan<sup>1</sup> that includes a comprehensive suite of emergency, security, navigation and diagnostic services. OnStar can help you stay safe, connected and ready for the road ahead.

**SOS** **EMERGENCY: HELP WHEN IT MATTERS MOST.** With Automatic Crash Response,<sup>3</sup> you can be immediately connected to the help you need the moment you need it, even if you can't ask for it. If you're stranded, have a flat tire or need a tow truck, use Roadside Assistance<sup>4</sup> and an OnStar Advisor will locate a nearby service provider and direct them to your exact location.

**SECURITY: PROTECTION YOU CAN COUNT ON.** Breathe easy knowing a comprehensive suite of Stolen Vehicle Assistance services is available to help protect your vehicle. With Theft Alarm Notification,<sup>5</sup> OnStar can alert you if your vehicle's alarm is sounding, and if your vehicle is stolen, OnStar will work with authorities to help locate and recover it quickly.

**NAVIGATION: TRAVEL MADE EASY.** Turn-by-Turn Navigation<sup>6</sup> makes everywhere you go as familiar as your own neighborhood. And with OnStar AtYourService,<sup>7M</sup> get valuable offers for better ways to eat, shop, work and play.

**CONNECTIONS: FASTER AND SMARTER.** Stay connected with the available built-in Wi-Fi hotspot<sup>7</sup> and connect up to seven devices at 4G LTE speed.

**VEHICLE MANAGER: PREPARING YOU FOR WHAT'S AHEAD.** Enjoy the ultimate ownership experience with your myBuick mobile app<sup>8</sup> Use Remote Access<sup>9</sup> to start your engine, lock and unlock your doors, honk the horn and flash the lights. Now you don't have to be near your Cascada to control it. Get real-time Diagnostic Alerts<sup>10</sup> or a monthly diagnostics report of the vehicle's engine, transmission and more with Advanced Diagnostics.<sup>10</sup>

<sup>1</sup>Visit onstar.com for coverage map, details and system limitations. <sup>2</sup>Does not include emergency or security services. <sup>3</sup>OnStar acts as a link to existing emergency service providers. Not all vehicles may transmit all crash data. <sup>4</sup>Roadside service provided by Allstate Roadside Services. <sup>5</sup>Theft Alarm Notification features vary by vehicle. Requires factory-installed theft-deterrent system; Security, Guidance or Stolen Vehicle Assistance Plan Add-On and selection of notification communication preference(s). Vehicles must be locked electronically to arm the factory-installed theft-deterrent system. Messaging and data rates may apply. <sup>6</sup>Requires Guidance or Navigation Plan Add-On. <sup>7</sup>Requires a compatible mobile device, active OnStar service and data plan. 4G LTE service available in select markets. Data plans provided by AT&T. <sup>8</sup>Requires data plan, compatible vehicle and compatible device. Some features require factory-installed remote start, power locks, Tire Pressure Monitoring System or active OnStar service. <sup>9</sup>Unlock feature requires automatic locks. Remote start requires factory-installed and enabled remote-start system. <sup>10</sup>Capabilities vary by model. Message and data rates may apply. Requires active OnStar service, email address on file and enrollment in Advanced Diagnostics.

## IMPORTANT WORDS



Since some information may have been updated since the time of printing, please check with your Buick dealer for complete details. Buick reserves the right to lengthen or shorten the model year for any product for any reason, or to start and end model years at different times.

**NEW-VEHICLE LIMITED WARRANTY** This warranty is for GM vehicles registered in the USA. See your Buick dealer for terms and conditions.

4 years/50,000 miles (whichever comes first): Bumper-to-Bumper Limited Warranty. The entire vehicle is warranted for repairs, including parts and labor, to correct defects in materials or workmanship. The warranty covers towing to the nearest Buick dealership, and there is no deductible for warranty repairs during the warranty period. The warranty transfers automatically with vehicle ownership during the warranty period.

6 years/70,000 miles (whichever comes first): Transferable Powertrain Limited Warranty plus Roadside Assistance and Courtesy Transportation.

6 years/100,000 miles (whichever comes first): Body and sheet metal components are warranted against rust-through corrosion.

**EXPERIENCE BUICK PROTECTION** Every 2018 Buick model includes a maintenance program that covers the first two visits of oil and filter changes, tire rotations and 27-point inspections for up to 2 years or 24,000 miles, whichever comes first (does not include air filters). The program is fully transferable to subsequent owners. See participating dealer for other restrictions and complete details.

### AN IMPORTANT NOTE ABOUT ALTERATIONS AND WARRANTIES

Installations or alterations to the original equipment vehicle (or chassis) as distributed by General Motors are not covered by the General Motors New-Vehicle Limited Warranty. The special body company, assembler, equipment installer or upfitter is solely responsible for warranties on the body or equipment and any alterations (or any effect of the alterations) to any of the parts, components, systems or assemblies installed by GM. General Motors is not responsible for the safety or quality of design features, materials or workmanship of any alterations by such suppliers.

**ASSEMBLY** Buick vehicles and their components are assembled or produced by different operating units of General Motors, its subsidiaries or suppliers to GM worldwide. We sometimes find it necessary to produce Buick vehicles with different or differently sourced components than originally scheduled.

Since some options may be unavailable when your vehicle is assembled, we suggest that you verify that your vehicle includes the equipment you ordered or, if there are changes, that they are acceptable to you.

**ENGINES** Buick products are equipped with engines produced by GM Powertrain or other suppliers to GM worldwide. The engines in Buick products may also be used in other GM makes and models.

**TRAILERING AND OFF-ROAD DRIVING INFORMATION** Please go to buick.com and carefully review the vehicle Owner's Manual for important safety information about trailering or off-road driving in your vehicle.

**A NOTE ON CHILD SAFETY** Always use safety belts and the correct child restraint for your child's age and size, even with air bags. Even in vehicles equipped with the Passenger Sensing System, children are safer when properly secured in a rear seat in the appropriate infant, child or booster seat. Never place a rear-facing infant restraint in the front seat of any vehicle equipped with an active frontal air bag. See your vehicle Owner's Manual and child safety seat instructions for more safety information.

**FLEET ORDERS** Some standard content may be deleted with fleet orders. See dealer for details.

**TAKE OWNERSHIP TO THE NEXT LEVEL** Create an Owner Center account to gain unrestricted access to everything you need to get the most out of your new vehicle. Receive alerts and service offers, schedule service, view vehicle-specific how-to videos and check service records. All online, anytime. Go to my.buick.com to take a tour or register your Buick today.

GM, the GM logo, Buick, the Buick emblem, OnStar, the OnStar emblem and the slogans, emblems, vehicle model names, vehicle body designs and other marks appearing in this catalog are the trademarks and/or service marks of General Motors, its subsidiaries, affiliates or licensors. Sirius, XM and all related marks and logos are trademarks of SiriusXM Radio, Inc. The Facebook logo is a trademark of Facebook, Inc. The Twitter logo is a trademark of Twitter, Inc. The YouTube logo is a trademark of Google Inc. Siri and iPhone are trademarks of Apple, Inc. The Instagram logo is a trademark of Instagram, Inc. ©2017 General Motors. All rights reserved.

To learn more about why Certified Service is the perfect companion for your Cascada, visit mycertifiedservice.com.





BUICK

BUICK.COM

